

Data Path : Z:\pestpcbsrv\HPCHEM1\ECD_L\Data\PL020421\
 Data File : PL064624.D
 Signal(s) : Signal #1: ECD1A.ch Signal #2: ECD2B.ch
 Acq On : 04 Feb 2021 11:15
 Operator : AR\AJ
 Sample : M1291-21RE
 Misc :
 ALS Vial : 13 Sample Multiplier: 1

Instrument :
 ECD_L
 ClientSampleId :
 OU421-005-0002RE

Integration File signal 1: autoint1.e
 Integration File signal 2: autoint2.e
 Quant Time: Feb 05 02:02:07 2021
 Quant Method : Z:\pestpcbsrv\HPCHEM1\ECD_L\methods\PL012921.M
 Quant Title : GC Extractables
 QLast Update : Fri Jan 29 04:48:57 2021
 Response via : Initial Calibration
 Integrator: ChemStation

Volume Inj. : 1 µl
 Signal #1 Phase : ZB-MR2 Signal #2 Phase: ZB-MR1
 Signal #1 Info : 30M x 0.32mm x0.2 Signal #2 Info : 30M x 0.32mm x0.5µm

Compound	RT#1	RT#2	Resp#1	Resp#2	ng/ml	ng/ml

System Monitoring Compounds						
1) SA Tetrachlo...	3.433	4.108	37831567	31497195	12.428	13.223
28) SA Decachlor...	8.163	9.271	118.7E6	95936414	37.658	46.858
Target Compounds						
4) MA Heptachlor	0.000	5.307	0	12451190	N.D.	3.573 #
5) MB Aldrin	4.666f	5.595f	7002206	1211939	1.648	0.406 #
6) B beta-BHC	0.000	4.987	0	2640016	N.D.	1.560 #
8) B Heptachlo...	0.000	6.011	0	18784658	N.D.	7.333 #
9) A Endosulfan I	5.490f	0.000	9567870	0	2.534	N.D. #
10) B gamma-Chl...	5.378f	6.266	3933875	12028905	0.950	4.138 #
11) B alpha-Chl...	0.000	6.327	0	10742547	N.D.	3.651 #
12) B 4,4'-DDE	5.582	6.484	209.0E6	159.8E6	55.439	61.702
13) MA Dieldrin	5.705	6.625	13064457	20134334	3.267	7.303 #
14) MA Endrin	5.969	6.842f	53518305	3569062	14.631	1.555 #
15) B Endosulfa...	6.231	7.051f	11395436	39349940	3.150	15.941 #
16) A 4,4'-DDD	6.095	6.984	10726963	60768308	3.409	26.399 #
17) MA 4,4'-DDT	6.334	7.283	238.0E6	138.8E6	77.553	67.586
18) B Endrin al...	6.424f	7.199	60854841	1185265	19.841	0.558 #
19) B Endosulfa...	6.617	0.000	204.1E6	0	56.148	N.D. #
20) A Methoxychlor	6.861f	7.727	199.3E6	7336120	110.356	5.799 #
21) B Endrin ke...	0.000	7.883f	0	34296947	N.D.	14.104 #
22) Mirex	0.000	8.370	0	159.4E6	N.D.	82.997 #
23) Chlordane-1	4.300	0.000	3406956	0	30.994	N.D. #
24) Chlordane-2	0.000	5.595	0	1211939	N.D.	11.685 #
25) Chlordane-3	5.378f	6.266f	3933875	12028905	10.905	33.555 #
26) Chlordane-4	0.000	6.327	0	10742547	N.D.	24.428 #
27) Chlordane-5	6.231	0.000	11395436	0	95.721	N.D. #

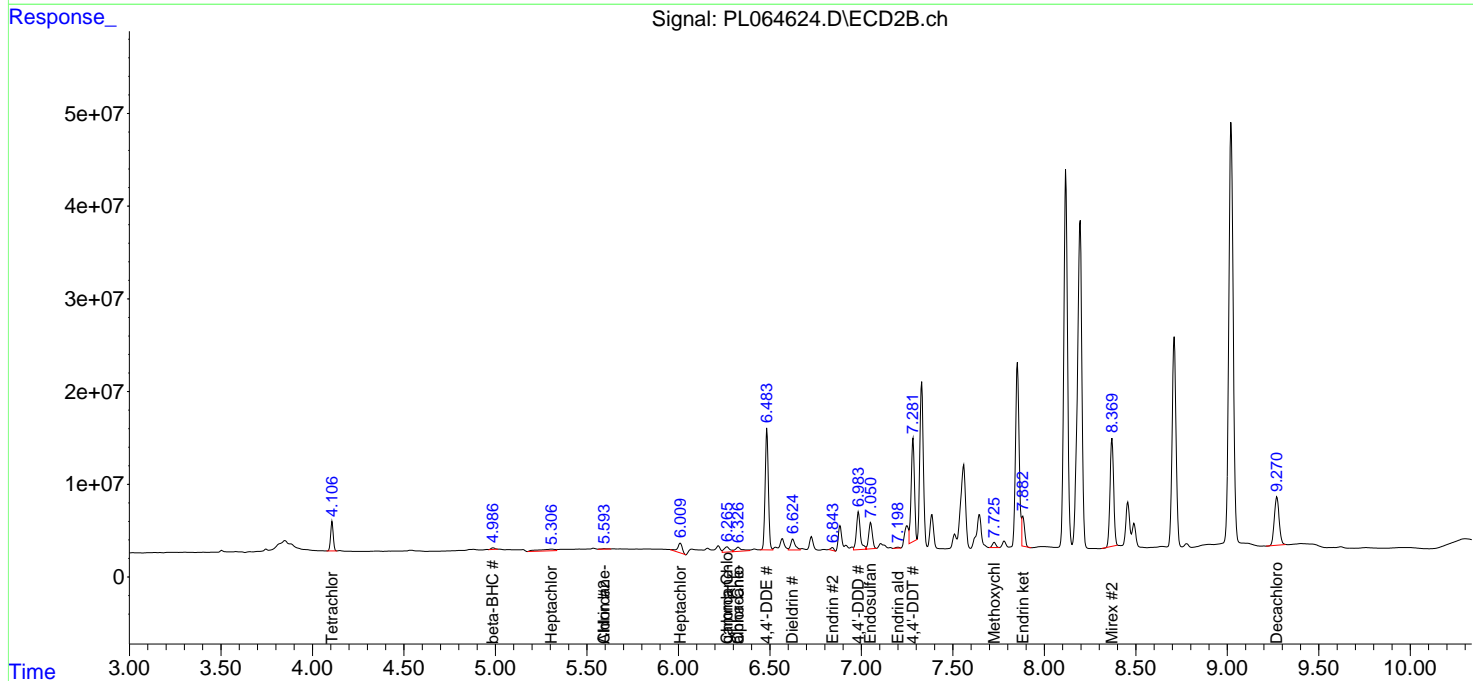
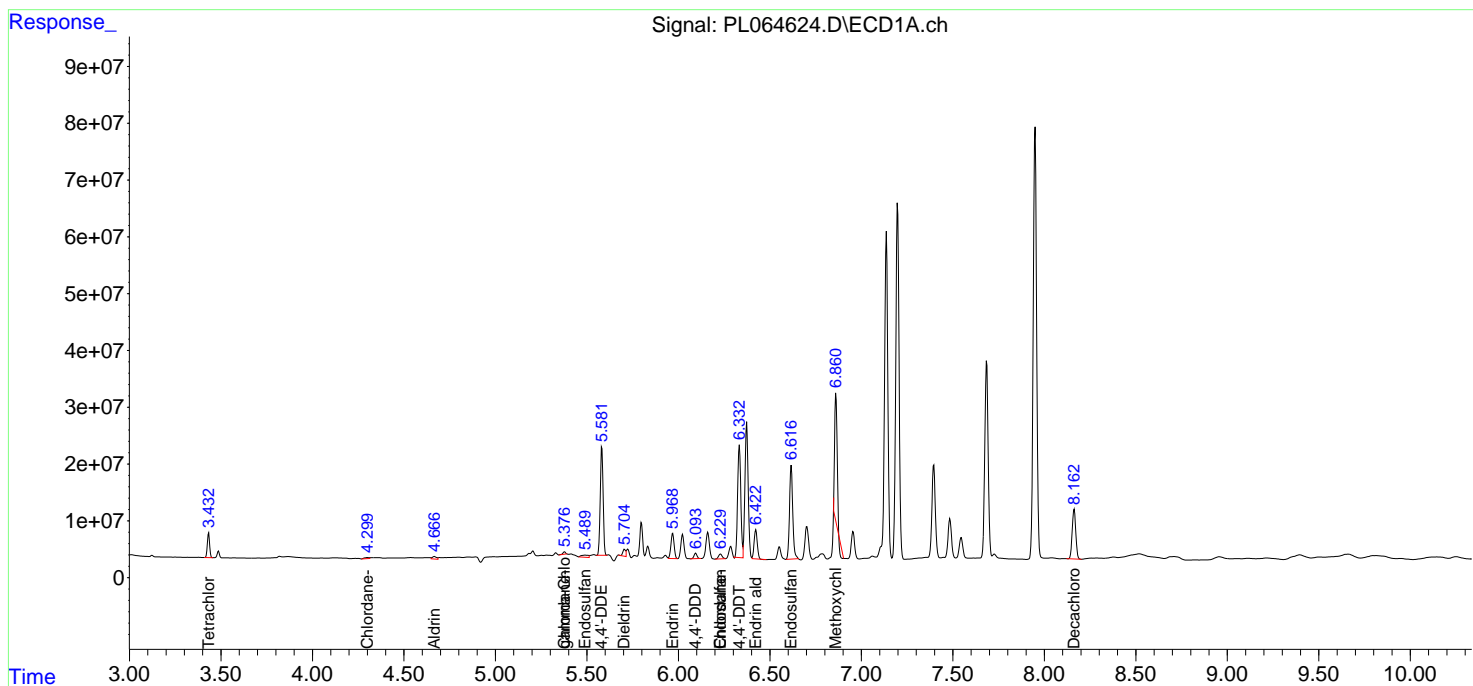
(f)=RT Delta > 1/2 Window (#)=Amounts differ by > 25% (m)=manual int.

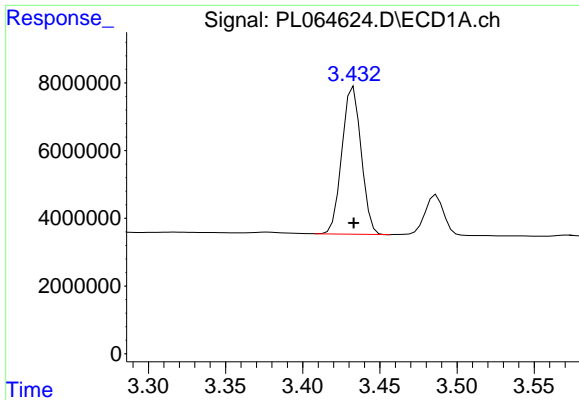
Data Path : Z:\pestpcbsrv\HPCHEM1\ECD_L\Data\PL020421\
 Data File : PL064624.D
 Signal(s) : Signal #1: ECD1A.ch Signal #2: ECD2B.ch
 Acq On : 04 Feb 2021 11:15
 Operator : AR\AJ
 Sample : M1291-21RE
 Misc :
 ALS Vial : 13 Sample Multiplier: 1

Instrument :
 ECD_L
 Client Sampled :
 OU421-005-0002RE

Integration File signal 1: autoint1.e
 Integration File signal 2: autoint2.e
 Quant Time: Feb 05 02:02:07 2021
 Quant Method : Z:\pestpcbsrv\HPCHEM1\ECD_L\methods\PL012921.M
 Quant Title : GC Extractables
 QLast Update : Fri Jan 29 04:48:57 2021
 Response via : Initial Calibration
 Integrator: ChemStation

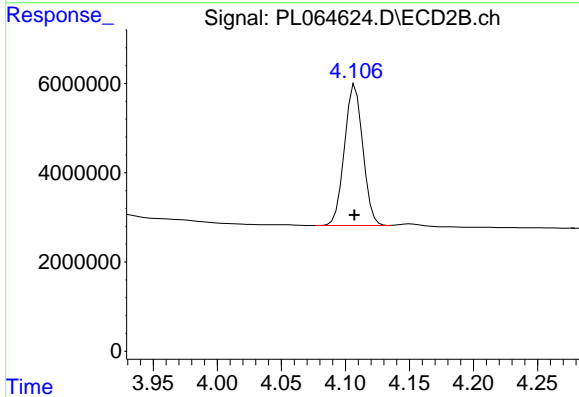
Volume Inj. : 1 µl
 Signal #1 Phase : ZB-MR2 Signal #2 Phase: ZB-MR1
 Signal #1 Info : 30M x 0.32mm x0.2 Signal #2 Info : 30M x 0.32mm x0.5µm



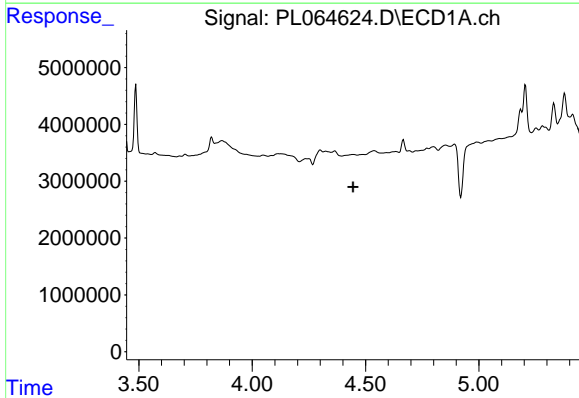


#1 Tetrachloro-m-xylene
 R.T.: 3.433 min
 Delta R.T.: 0.000 min
 Response: 37831567
 Conc: 12.43 ng/ml

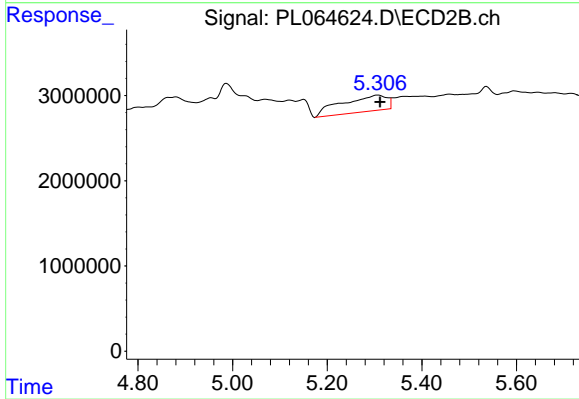
Instrument :
 ECD_L
 ClientSampleId :
 OU421-005-0002RE



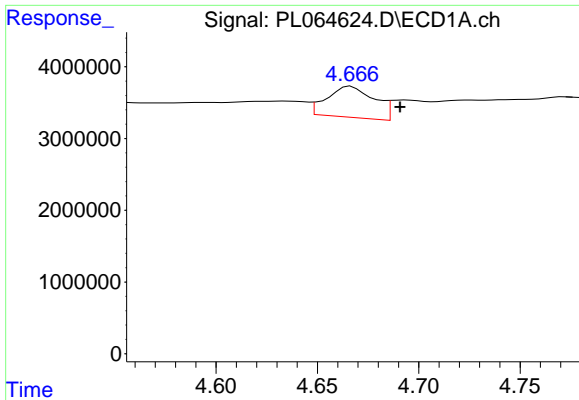
#1 Tetrachloro-m-xylene
 R.T.: 4.108 min
 Delta R.T.: 0.000 min
 Response: 31497195
 Conc: 13.22 ng/ml



#4 Heptachlor
 R.T.: 0.000 min
 Exp R.T. : 4.445 min
 Response: 0
 Conc: N.D.

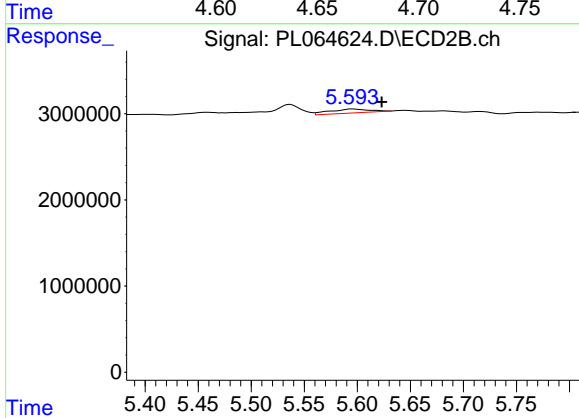


#4 Heptachlor
 R.T.: 5.307 min
 Delta R.T.: -0.004 min
 Response: 12451190
 Conc: 3.57 ng/ml

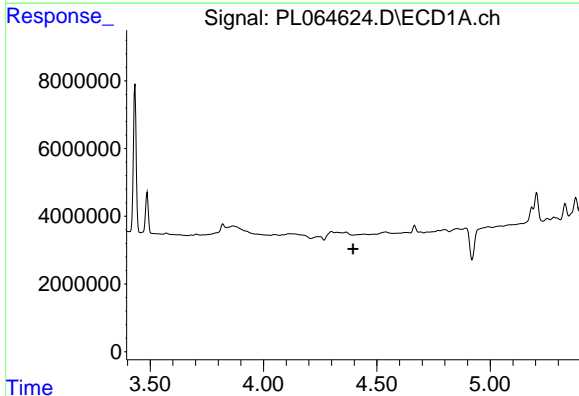


#5 Aldrin
 R.T.: 4.666 min
 Delta R.T.: -0.024 min
 Response: 7002206
 Conc: 1.65 ng/ml

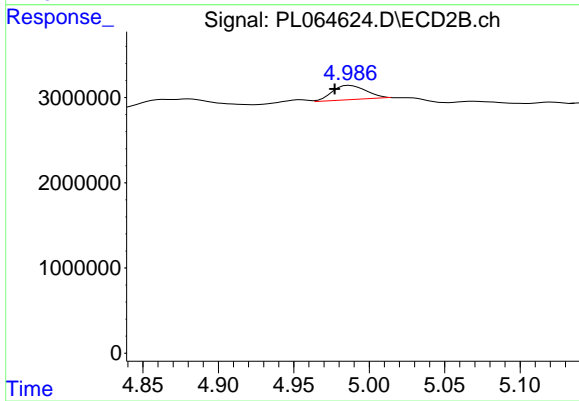
Instrument :
 ECD_L
 ClientSampleId :
 OU421-005-0002RE



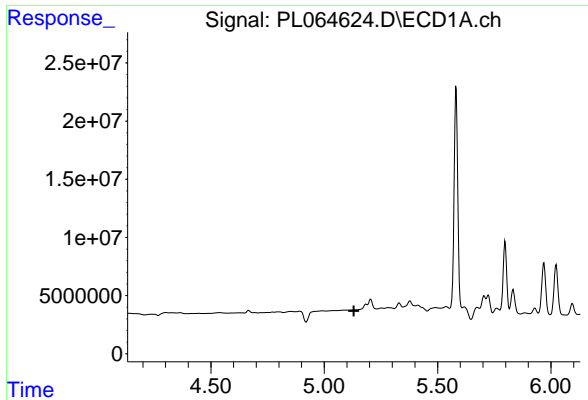
#5 Aldrin
 R.T.: 5.595 min
 Delta R.T.: -0.028 min
 Response: 1211939
 Conc: 0.41 ng/ml



#6 beta-BHC
 R.T.: 0.000 min
 Exp R.T. : 4.395 min
 Response: 0
 Conc: N.D.

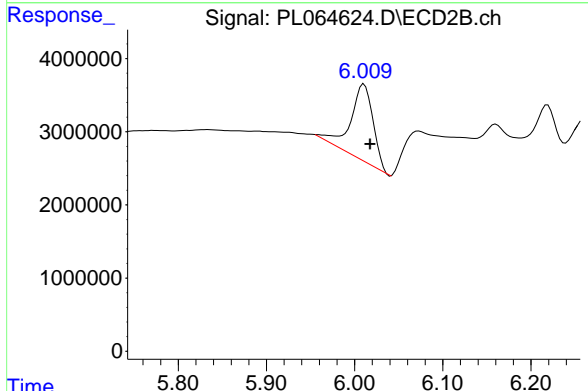


#6 beta-BHC
 R.T.: 4.987 min
 Delta R.T.: 0.010 min
 Response: 2640016
 Conc: 1.56 ng/ml

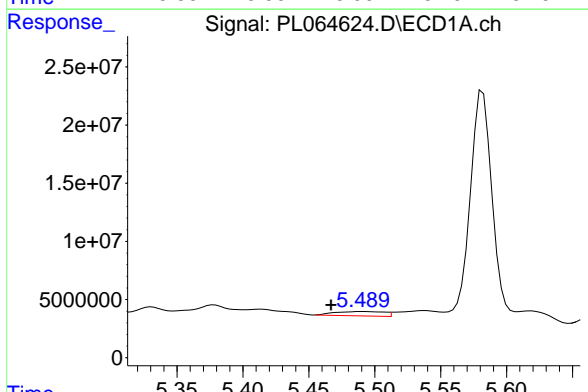


#8 Heptachlor epoxide
 R.T.: 0.000 min
 Exp R.T.: 5.131 min
 Response: 0
 Conc: N.D.

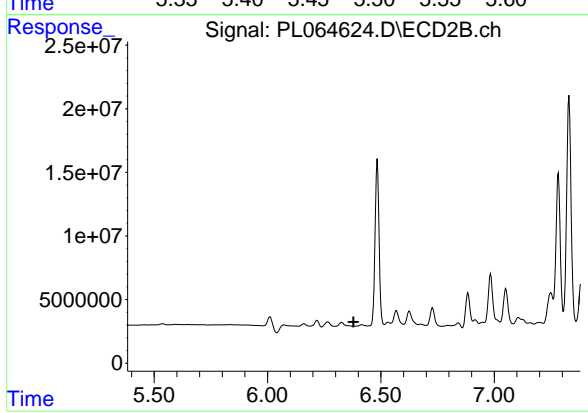
Instrument :
 ECD_L
 ClientSampleId :
 OU421-005-0002RE



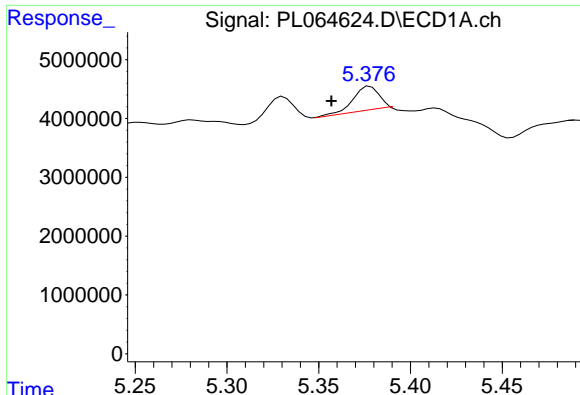
#8 Heptachlor epoxide
 R.T.: 6.011 min
 Delta R.T.: -0.007 min
 Response: 18784658
 Conc: 7.33 ng/ml



#9 Endosulfan I
 R.T.: 5.490 min
 Delta R.T.: 0.023 min
 Response: 9567870
 Conc: 2.53 ng/ml



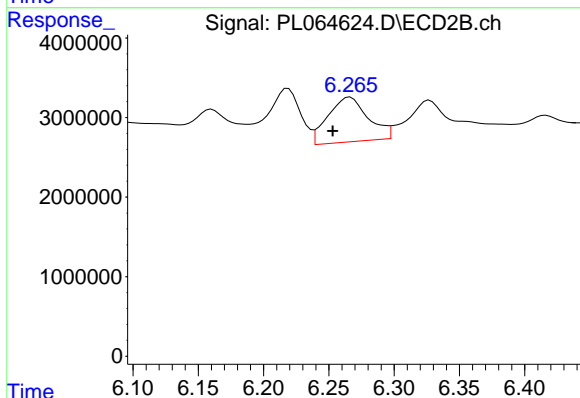
#9 Endosulfan I
 R.T.: 0.000 min
 Exp R.T.: 6.379 min
 Response: 0
 Conc: N.D.



#10 gamma-Chlordane

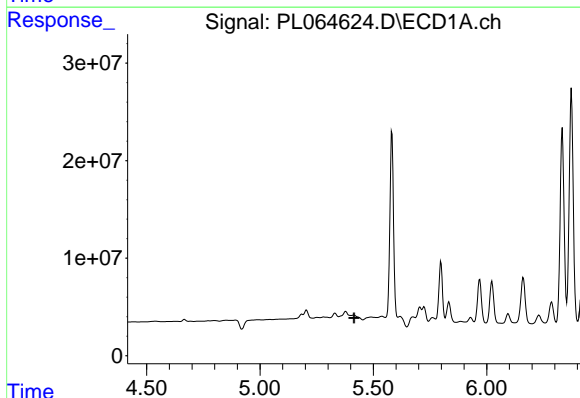
R.T.: 5.378 min
 Delta R.T.: 0.021 min
 Response: 3933875
 Conc: 0.95 ng/ml

Instrument :
 ECD_L
 ClientSampleId :
 OU421-005-0002RE



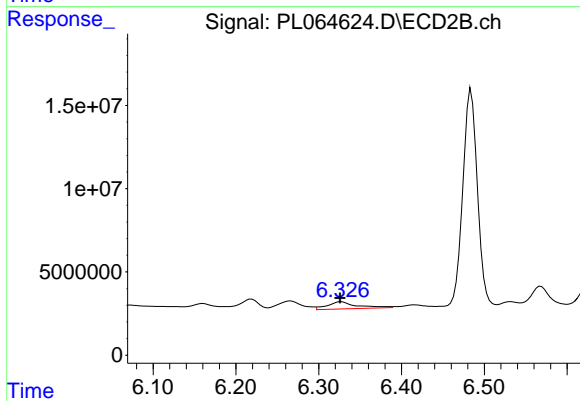
#10 gamma-Chlordane

R.T.: 6.266 min
 Delta R.T.: 0.013 min
 Response: 12028905
 Conc: 4.14 ng/ml



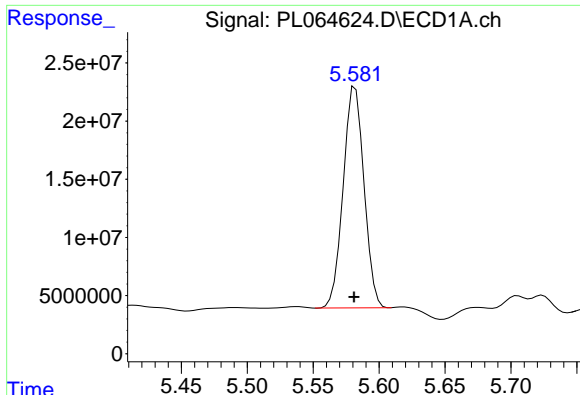
#11 alpha-Chlordane

R.T.: 0.000 min
 Exp R.T. : 5.415 min
 Response: 0
 Conc: N.D.



#11 alpha-Chlordane

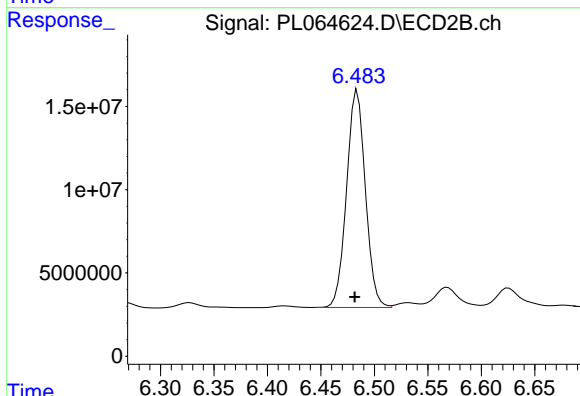
R.T.: 6.327 min
 Delta R.T.: 0.002 min
 Response: 10742547
 Conc: 3.65 ng/ml



#12 4,4'-DDE

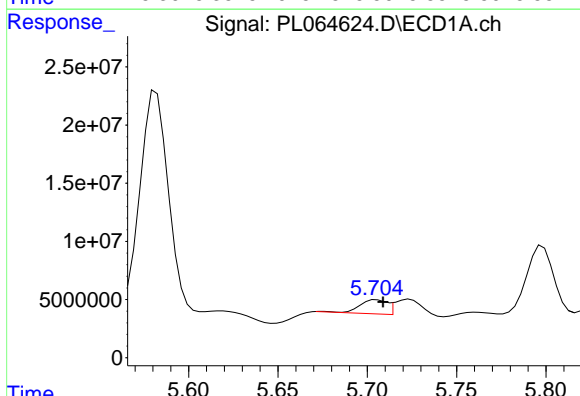
R.T.: 5.582 min
 Delta R.T.: 0.000 min
 Response: 208979903
 Conc: 55.44 ng/ml

Instrument :
 ECD_L
 ClientSampleId :
 OU421-005-0002RE



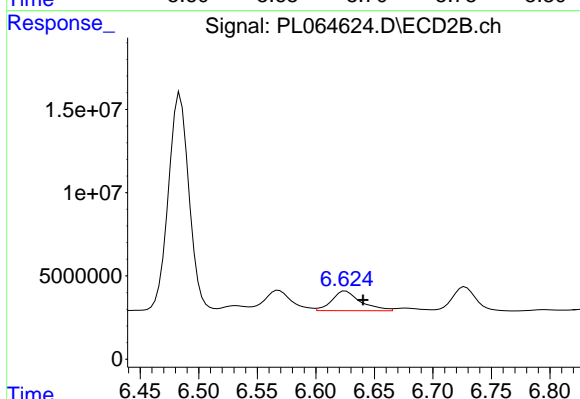
#12 4,4'-DDE

R.T.: 6.484 min
 Delta R.T.: 0.003 min
 Response: 159764225
 Conc: 61.70 ng/ml



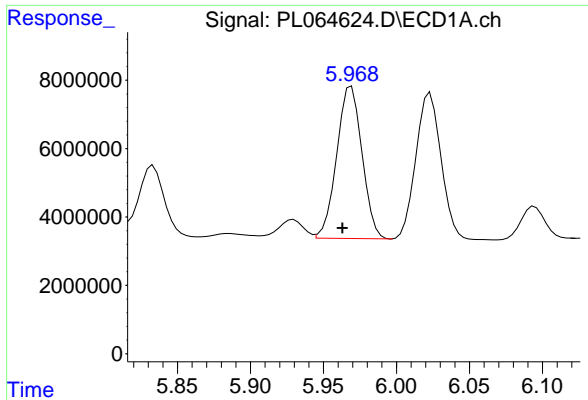
#13 Dieldrin

R.T.: 5.705 min
 Delta R.T.: -0.003 min
 Response: 13064457
 Conc: 3.27 ng/ml



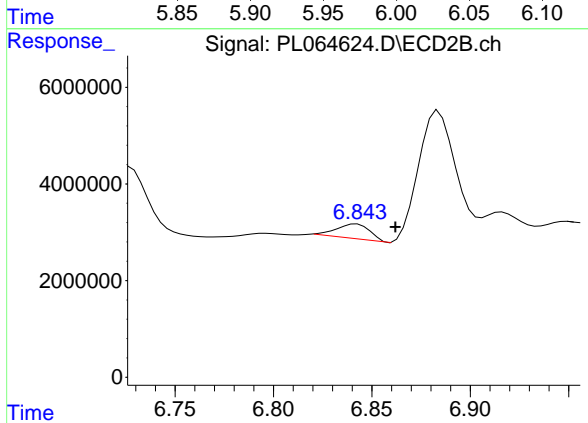
#13 Dieldrin

R.T.: 6.625 min
 Delta R.T.: -0.015 min
 Response: 20134334
 Conc: 7.30 ng/ml

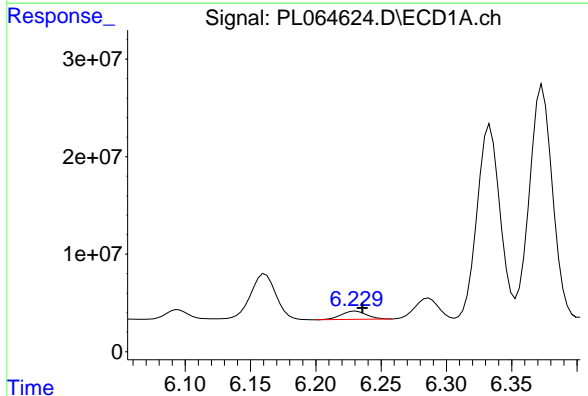


#14 Endrin
 R.T.: 5.969 min
 Delta R.T.: 0.006 min
 Response: 53518305
 Conc: 14.63 ng/ml

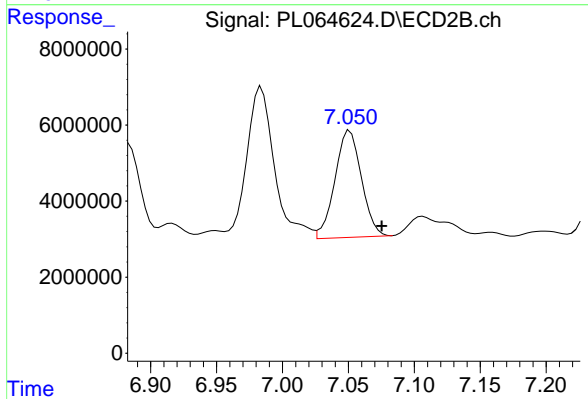
Instrument :
 ECD_L
 ClientSampleId :
 OU421-005-0002RE



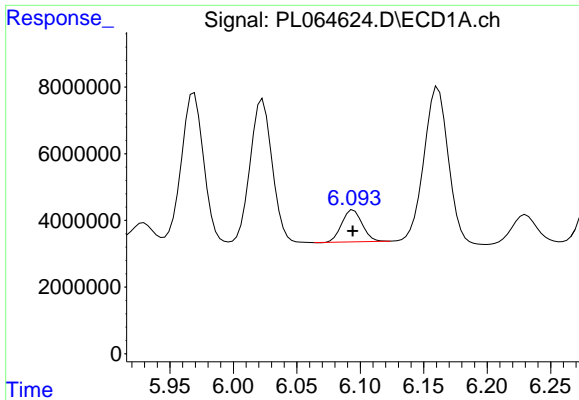
#14 Endrin
 R.T.: 6.842 min
 Delta R.T.: -0.020 min
 Response: 3569062
 Conc: 1.55 ng/ml



#15 Endosulfan II
 R.T.: 6.231 min
 Delta R.T.: -0.005 min
 Response: 11395436
 Conc: 3.15 ng/ml



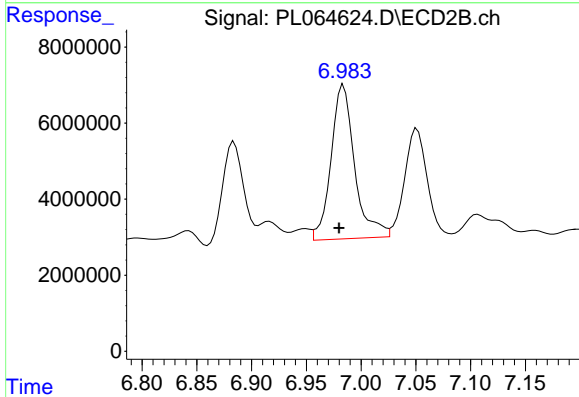
#15 Endosulfan II
 R.T.: 7.051 min
 Delta R.T.: -0.024 min
 Response: 39349940
 Conc: 15.94 ng/ml



#16 4,4'-DDD

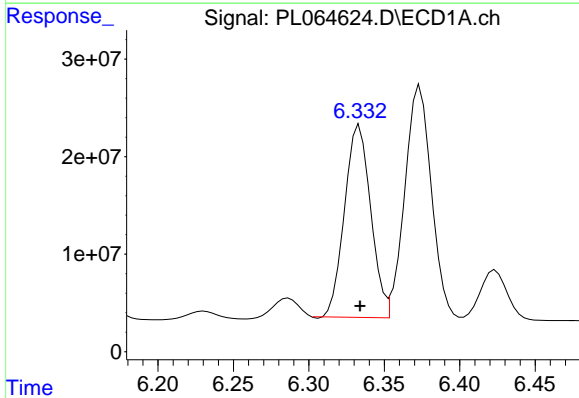
R.T.: 6.095 min
 Delta R.T.: 0.000 min
 Response: 10726963
 Conc: 3.41 ng/ml

Instrument :
 ECD_L
 ClientSampleId :
 OU421-005-0002RE



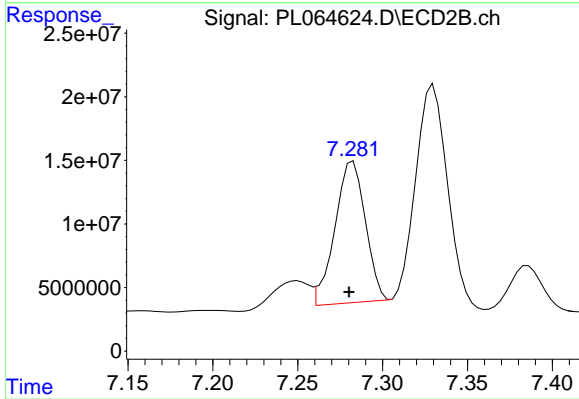
#16 4,4'-DDD

R.T.: 6.984 min
 Delta R.T.: 0.004 min
 Response: 60768308
 Conc: 26.40 ng/ml



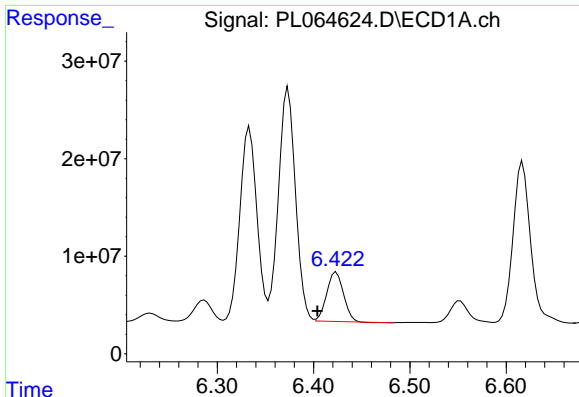
#17 4,4'-DDT

R.T.: 6.334 min
 Delta R.T.: 0.000 min
 Response: 238012265
 Conc: 77.55 ng/ml



#17 4,4'-DDT

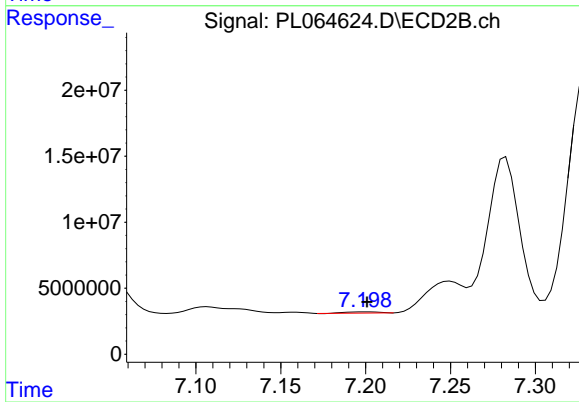
R.T.: 7.283 min
 Delta R.T.: 0.002 min
 Response: 138823709
 Conc: 67.59 ng/ml



#18 Endrin aldehyde

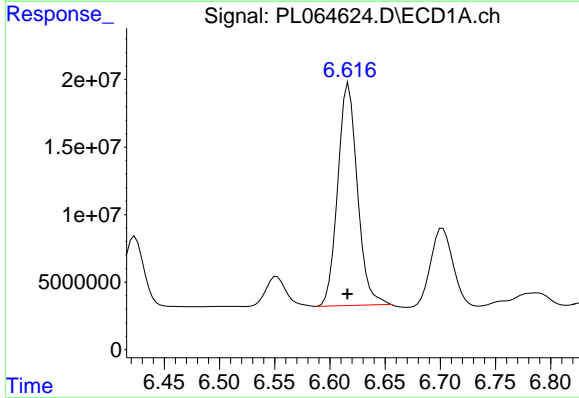
R.T.: 6.424 min
 Delta R.T.: 0.020 min
 Response: 60854841
 Conc: 19.84 ng/ml

Instrument :
 ECD_L
 ClientSampleId :
 OU421-005-0002RE



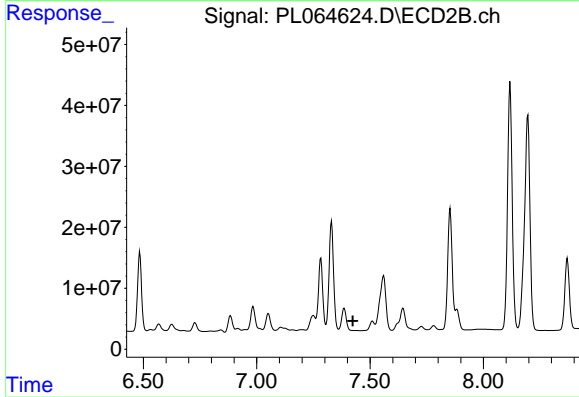
#18 Endrin aldehyde

R.T.: 7.199 min
 Delta R.T.: -0.001 min
 Response: 1185265
 Conc: 0.56 ng/ml



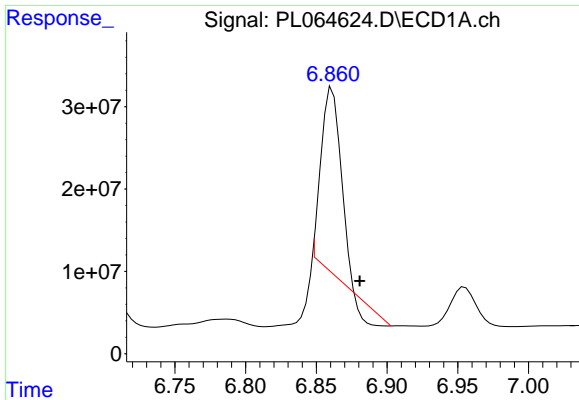
#19 Endosulfan Sulfate

R.T.: 6.617 min
 Delta R.T.: 0.001 min
 Response: 204090184
 Conc: 56.15 ng/ml



#19 Endosulfan Sulfate

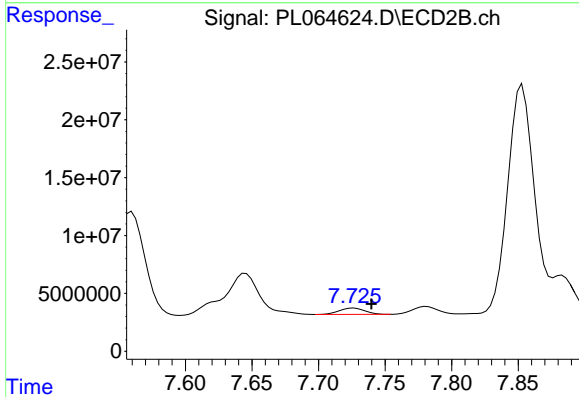
R.T.: 0.000 min
 Exp R.T.: 7.425 min
 Response: 0
 Conc: N.D.



#20 Methoxychlor

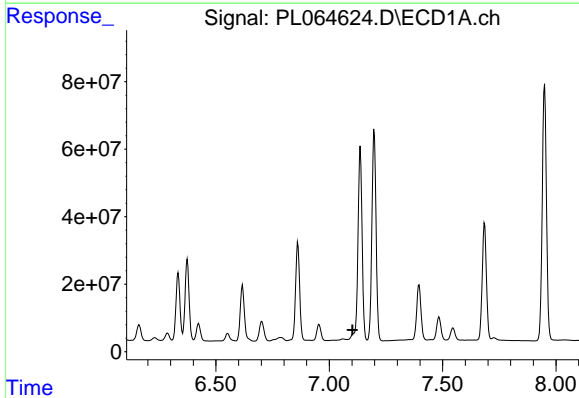
R.T.: 6.861 min
 Delta R.T.: -0.019 min
 Response: 199339607
 Conc: 110.36 ng/ml

Instrument :
 ECD_L
 ClientSampleId :
 OU421-005-0002RE



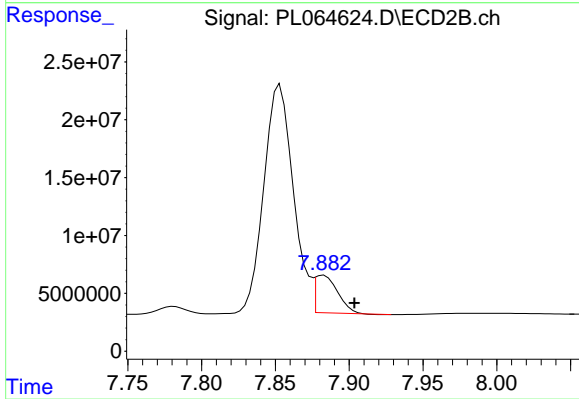
#20 Methoxychlor

R.T.: 7.727 min
 Delta R.T.: -0.013 min
 Response: 7336120
 Conc: 5.80 ng/ml



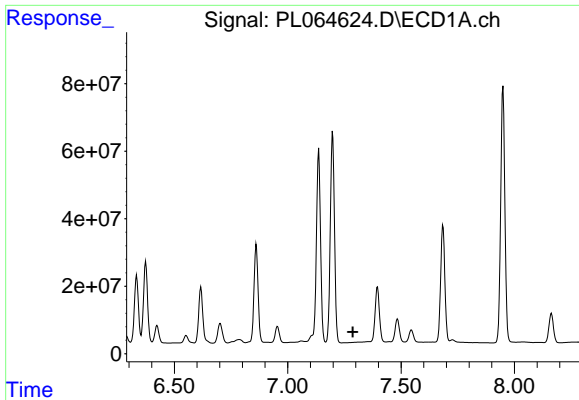
#21 Endrin ketone

R.T.: 0.000 min
 Exp R.T. : 7.103 min
 Response: 0
 Conc: N.D.



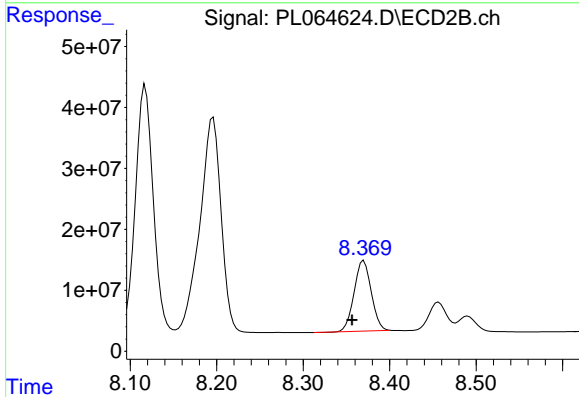
#21 Endrin ketone

R.T.: 7.883 min
 Delta R.T.: -0.021 min
 Response: 34296947
 Conc: 14.10 ng/ml

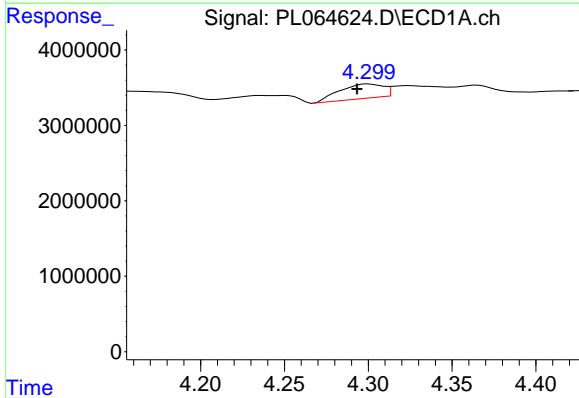


#22 Mirex
 R.T.: 0.000 min
 Exp R.T.: 7.287 min
 Response: 0
 Conc: N.D.

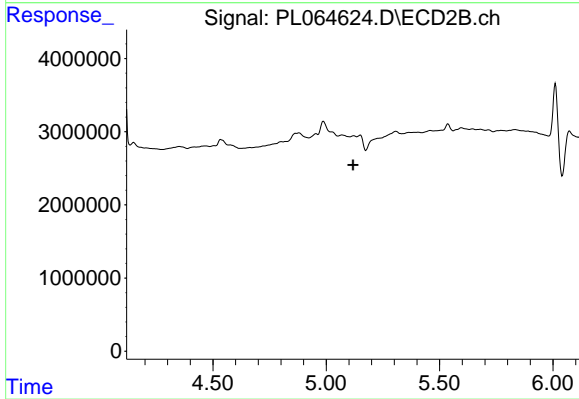
Instrument :
 ECD_L
 ClientSampleId :
 OU421-005-0002RE



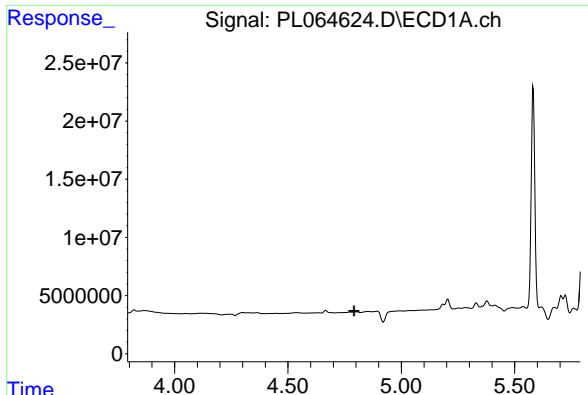
#22 Mirex
 R.T.: 8.370 min
 Delta R.T.: 0.014 min
 Response: 159394741
 Conc: 83.00 ng/ml



#23 Chlordane-1
 R.T.: 4.300 min
 Delta R.T.: 0.007 min
 Response: 3406956
 Conc: 30.99 ng/ml



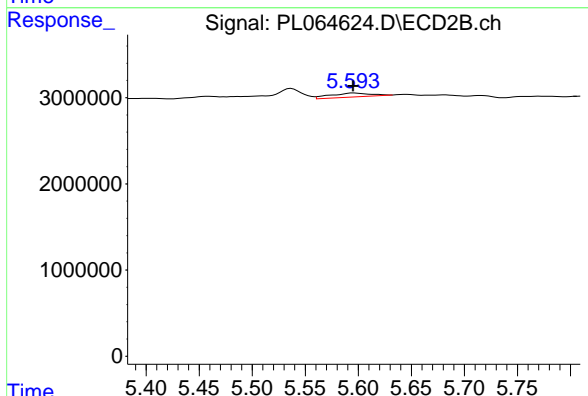
#23 Chlordane-1
 R.T.: 0.000 min
 Exp R.T.: 5.119 min
 Response: 0
 Conc: N.D.



#24 Chlordane-2

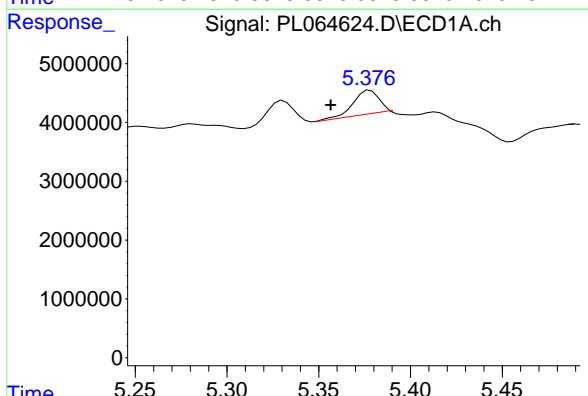
R.T.: 0.000 min
 Exp R.T.: 4.792 min
 Response: 0
 Conc: N.D.

Instrument :
 ECD_L
 ClientSampleId :
 OU421-005-0002RE



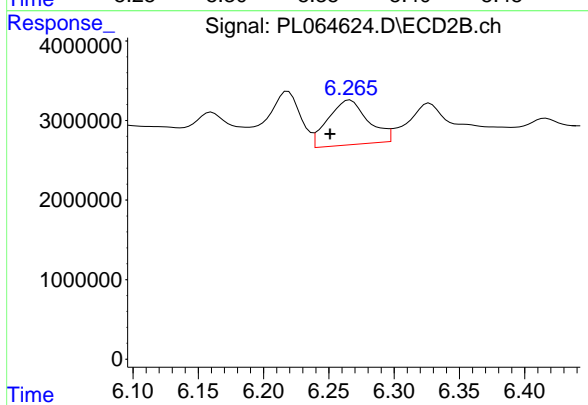
#24 Chlordane-2

R.T.: 5.595 min
 Delta R.T.: 0.000 min
 Response: 1211939
 Conc: 11.68 ng/ml



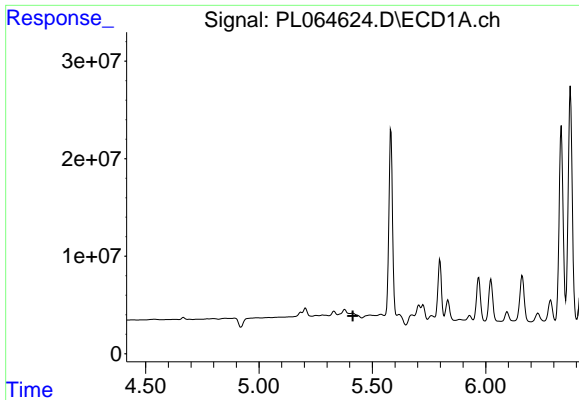
#25 Chlordane-3

R.T.: 5.378 min
 Delta R.T.: 0.021 min
 Response: 3933875
 Conc: 10.91 ng/ml



#25 Chlordane-3

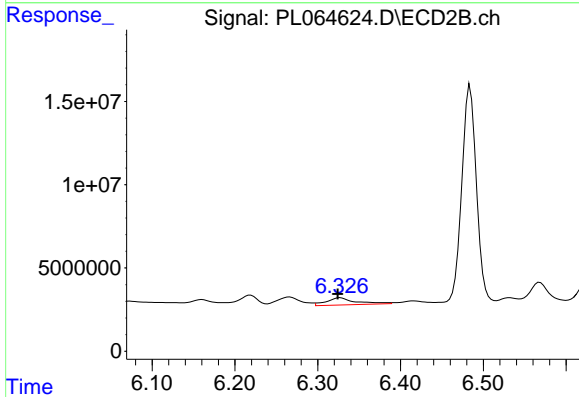
R.T.: 6.266 min
 Delta R.T.: 0.015 min
 Response: 12028905
 Conc: 33.55 ng/ml



#26 Chlordane-4

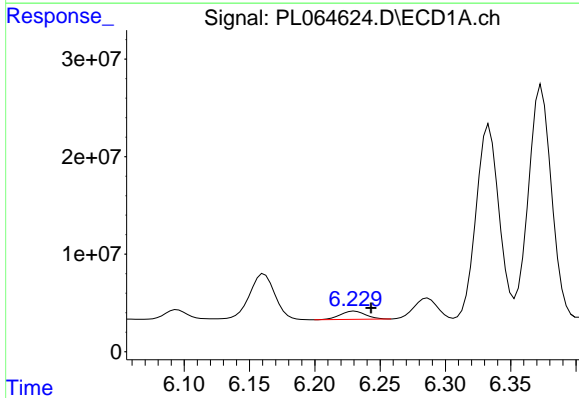
R.T.: 0.000 min
 Exp R.T. : 5.414 min
 Response: 0
 Conc: N.D.

Instrument :
 ECD_L
 ClientSampleId :
 OU421-005-0002RE



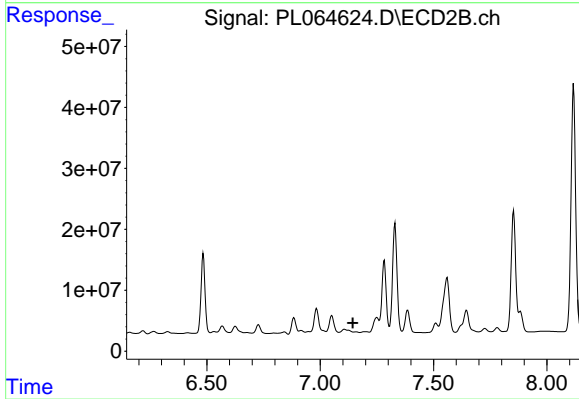
#26 Chlordane-4

R.T.: 6.327 min
 Delta R.T.: 0.003 min
 Response: 10742547
 Conc: 24.43 ng/ml



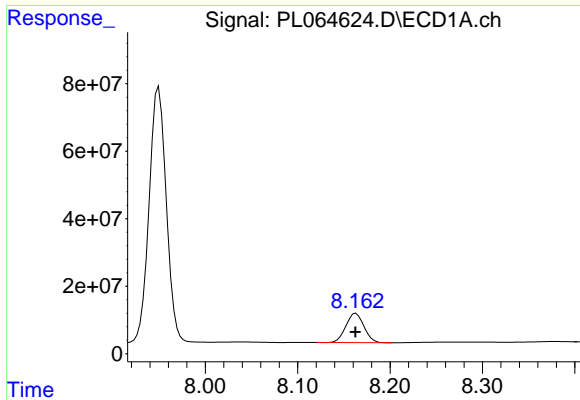
#27 Chlordane-5

R.T.: 6.231 min
 Delta R.T.: -0.013 min
 Response: 11395436
 Conc: 95.72 ng/ml



#27 Chlordane-5

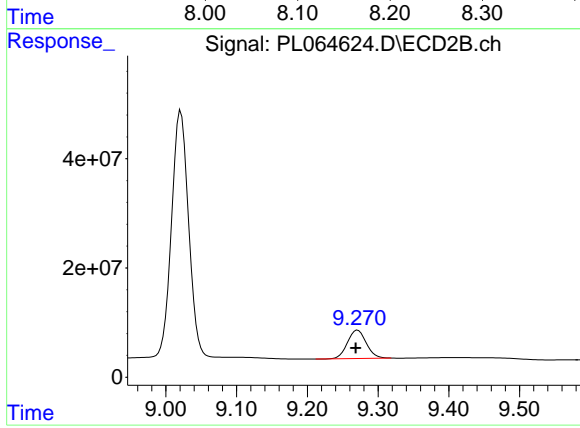
R.T.: 0.000 min
 Exp R.T. : 7.144 min
 Response: 0
 Conc: N.D.



#28 Decachlorobiphenyl

R.T.: 8.163 min
Delta R.T.: 0.000 min
Response: 118672914
Conc: 37.66 ng/ml

Instrument :
ECD_L
ClientSampleId :
OU421-005-0002RE



#28 Decachlorobiphenyl

R.T.: 9.271 min
Delta R.T.: 0.003 min
Response: 95936414
Conc: 46.86 ng/ml