

Data Path : Z:\pestpcbsrv\HPCHEM1\ECD\_L\Data\PL022721\  
 Data File : PL064983.D  
 Signal(s) : Signal #1: ECD1A.ch Signal #2: ECD2B.ch  
 Acq On : 26 Feb 2021 16:07  
 Operator : AR\AJ  
 Sample : PB134846TB  
 Misc :  
 ALS Vial : 17 Sample Multiplier: 1

Instrument :  
 ECD\_L  
 ClientSampleId :

Integration File signal 1: autoint1.e  
 Integration File signal 2: autoint2.e  
 Quant Time: Feb 26 17:04:39 2021  
 Quant Method : Z:\pestpcbsrv\HPCHEM1\ECD\_L\methods\PL020821.M  
 Quant Title : GC Extractables  
 QLast Update : Tue Feb 09 04:41:29 2021  
 Response via : Initial Calibration  
 Integrator: ChemStation

Volume Inj. : 1 µl  
 Signal #1 Phase : ZB-MR2 Signal #2 Phase: ZB-MR1  
 Signal #1 Info : 30M x 0.32mm x0.2 Signal #2 Info : 30M x 0.32mm x0.5µm

Compound	RT#1	RT#2	Resp#1	Resp#2	ng/ml	ng/ml
-----						
System Monitoring Compounds						
1) SA Tetrachlo...	3.422	4.097	55694953	47508693	19.796	21.993
28) SA Decachlor...	8.140	9.251	58071503	44650476	25.823	23.508

Target Compounds

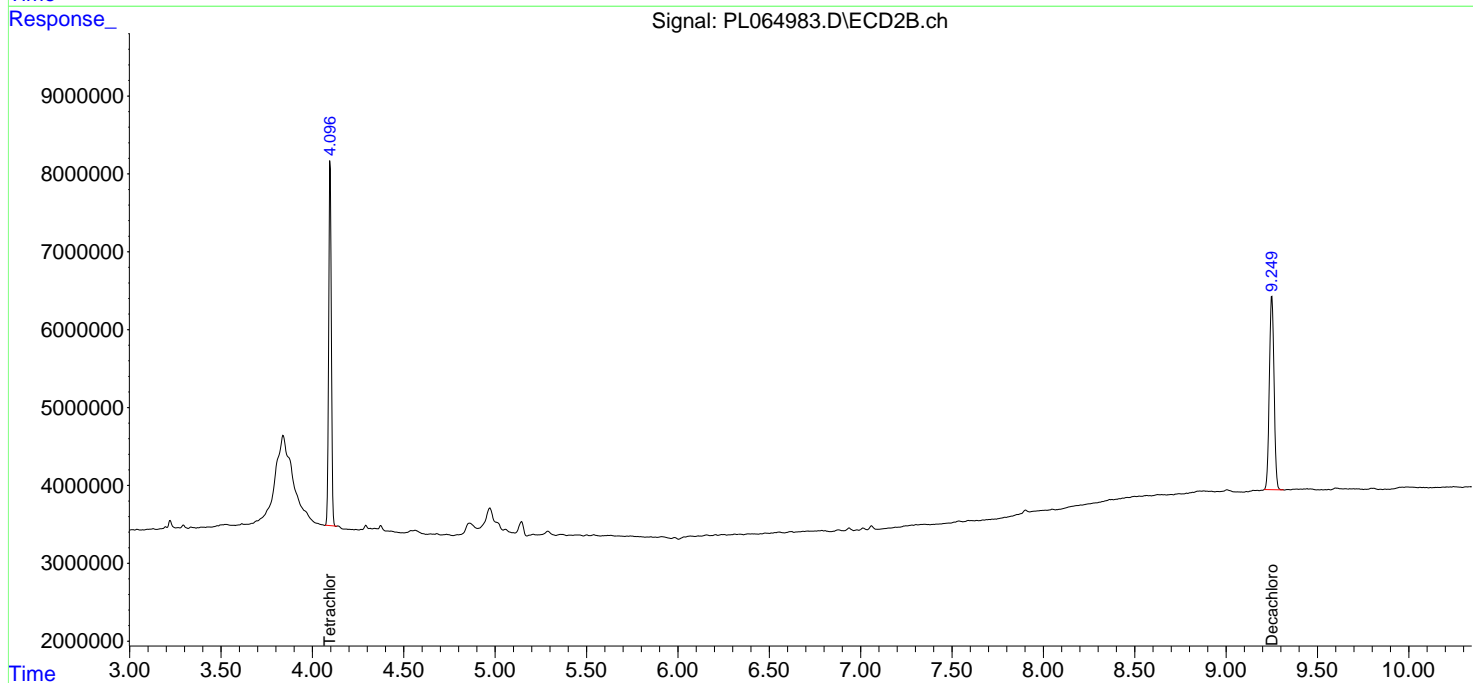
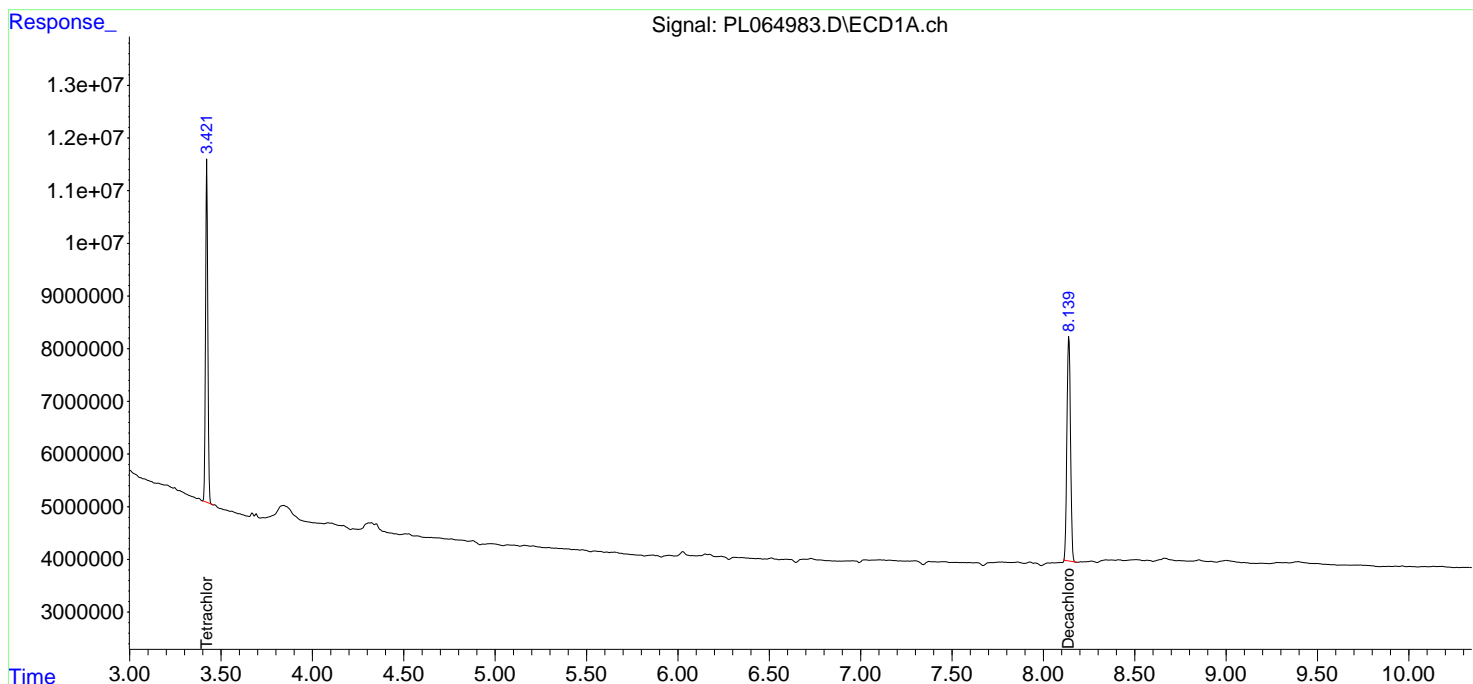
(f)=RT Delta > 1/2 Window (#)=Amounts differ by > 25% (m)=manual int.

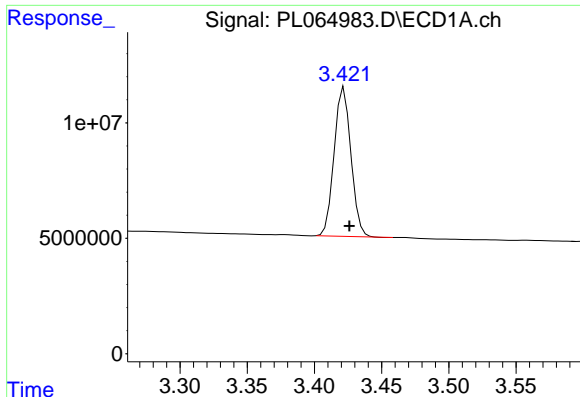
Data Path : Z:\pestpcbsrv\HPCHEM1\ECD\_L\Data\PL022721\  
 Data File : PL064983.D  
 Signal(s) : Signal #1: ECD1A.ch Signal #2: ECD2B.ch  
 Acq On : 26 Feb 2021 16:07  
 Operator : AR\AJ  
 Sample : PB134846TB  
 Misc :  
 ALS Vial : 17 Sample Multiplier: 1

Instrument :  
 ECD\_L  
 ClientSampleId :

Integration File signal 1: autoint1.e  
 Integration File signal 2: autoint2.e  
 Quant Time: Feb 26 17:04:39 2021  
 Quant Method : Z:\pestpcbsrv\HPCHEM1\ECD\_L\methods\PL020821.M  
 Quant Title : GC Extractables  
 QLast Update : Tue Feb 09 04:41:29 2021  
 Response via : Initial Calibration  
 Integrator: ChemStation

Volume Inj. : 1 µl  
 Signal #1 Phase : ZB-MR2 Signal #2 Phase: ZB-MR1  
 Signal #1 Info : 30M x 0.32mm x0.2 Signal #2 Info : 30M x 0.32mm x0.5µm

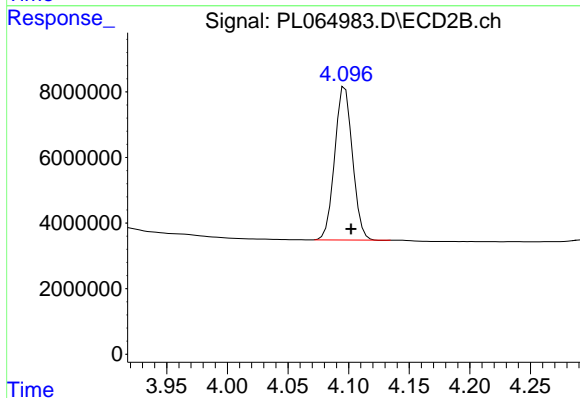




#1 Tetrachloro-m-xylene

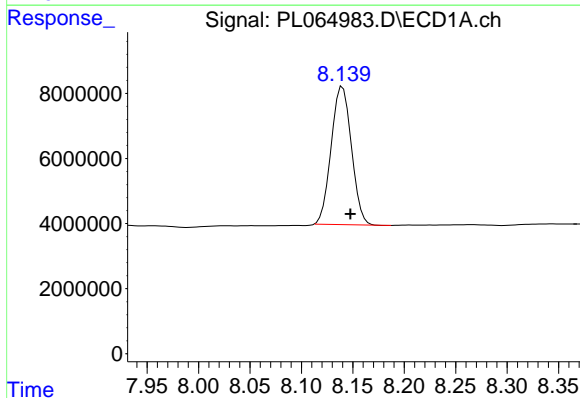
R.T.: 3.422 min  
 Delta R.T.: -0.004 min  
 Response: 55694953  
 Conc: 19.80 ng/ml

Instrument :  
 ECD\_L  
 ClientSampleId :



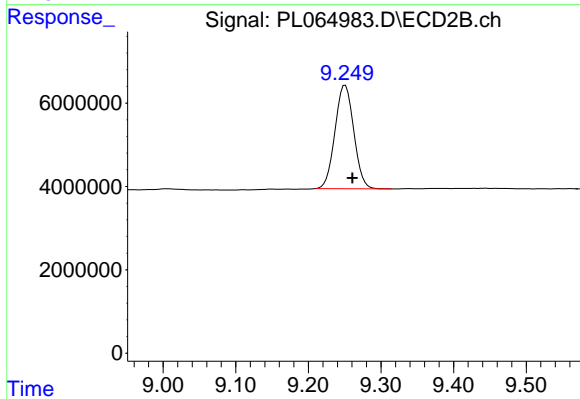
#1 Tetrachloro-m-xylene

R.T.: 4.097 min  
 Delta R.T.: -0.005 min  
 Response: 47508693  
 Conc: 21.99 ng/ml



#28 Decachlorobiphenyl

R.T.: 8.140 min  
 Delta R.T.: -0.008 min  
 Response: 58071503  
 Conc: 25.82 ng/ml



#28 Decachlorobiphenyl

R.T.: 9.251 min  
 Delta R.T.: -0.010 min  
 Response: 44650476  
 Conc: 23.51 ng/ml