

Data Path : Z:\pestpcbsrv\HPCHEM1\ECD\_L\Data\PL030921\  
 Data File : PL065169.D  
 Signal(s) : Signal #1: ECD1A.ch Signal #2: ECD2B.ch  
 Acq On : 09 Mar 2021 12:55  
 Operator : AR\AJ  
 Sample : M1599-01 10X  
 Misc :  
 ALS Vial : 13 Sample Multiplier: 1

Instrument :  
 ECD\_L  
 ClientSampleId :

Integration File signal 1: autoint1.e  
 Integration File signal 2: autoint2.e  
 Quant Time: Mar 10 06:19:34 2021  
 Quant Method : Z:\pestpcbsrv\HPCHEM1\ECD\_L\methods\PL030521.M  
 Quant Title : GC Extractables  
 QLast Update : Fri Mar 05 02:26:14 2021  
 Response via : Initial Calibration  
 Integrator: ChemStation

Volume Inj. : 1 µl  
 Signal #1 Phase : ZB-MR2 Signal #2 Phase: ZB-MR1  
 Signal #1 Info : 30M x 0.32mm x0.2 Signal #2 Info : 30M x 0.32mm x0.5µm

Compound	RT#1	RT#2	Resp#1	Resp#2	ng/ml	ng/ml
-----						
System Monitoring Compounds						
1) SA Tetrachlo...	3.421	4.096	6114251	4646571	2.079	1.871
28) SA Decachlor...	8.139	9.250	5279639	4282543	1.903	1.950
Target Compounds						
6) B beta-BHC	4.396	4.977	1175210	4170351	0.629	2.727 #
9) A Endosulfan I	5.460	0.000	16328465	0	4.566	N.D. #
23) Chlordane-1	4.285	0.000	4940401	0	38.761	N.D. #
-----						

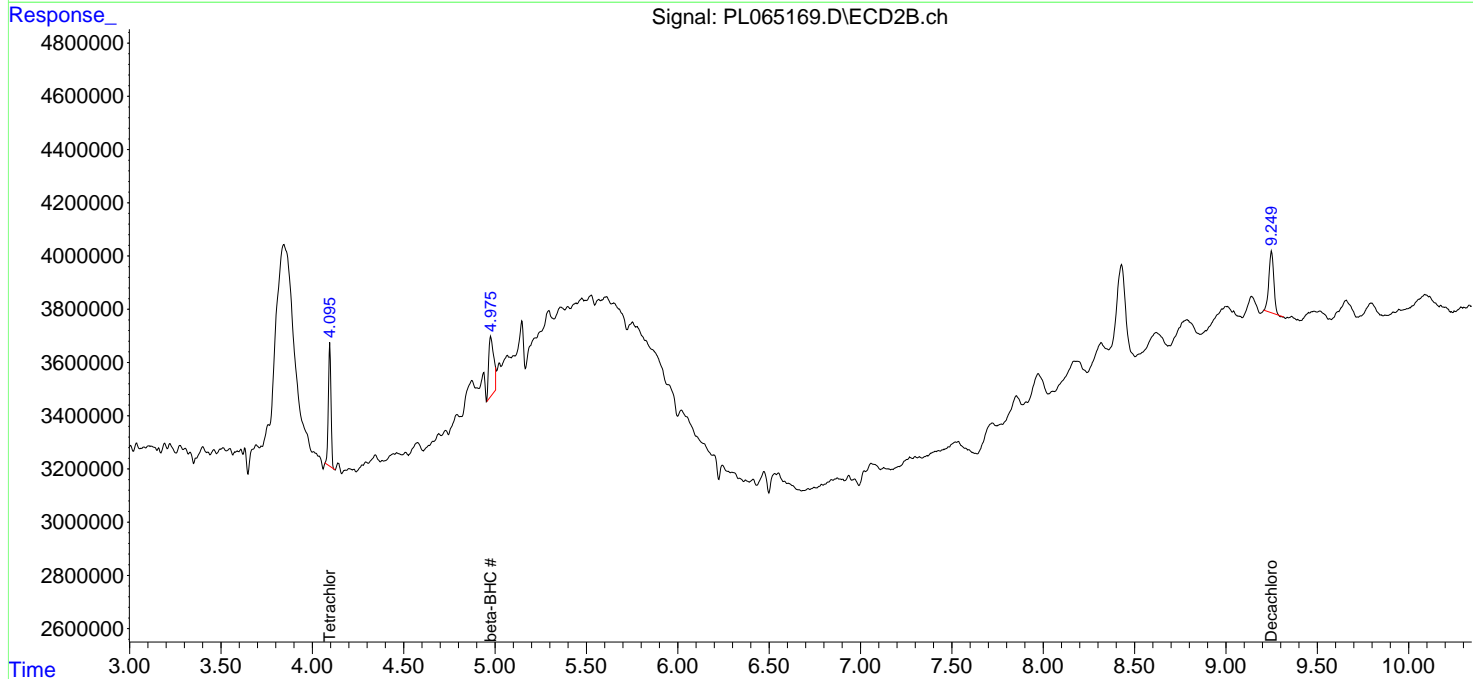
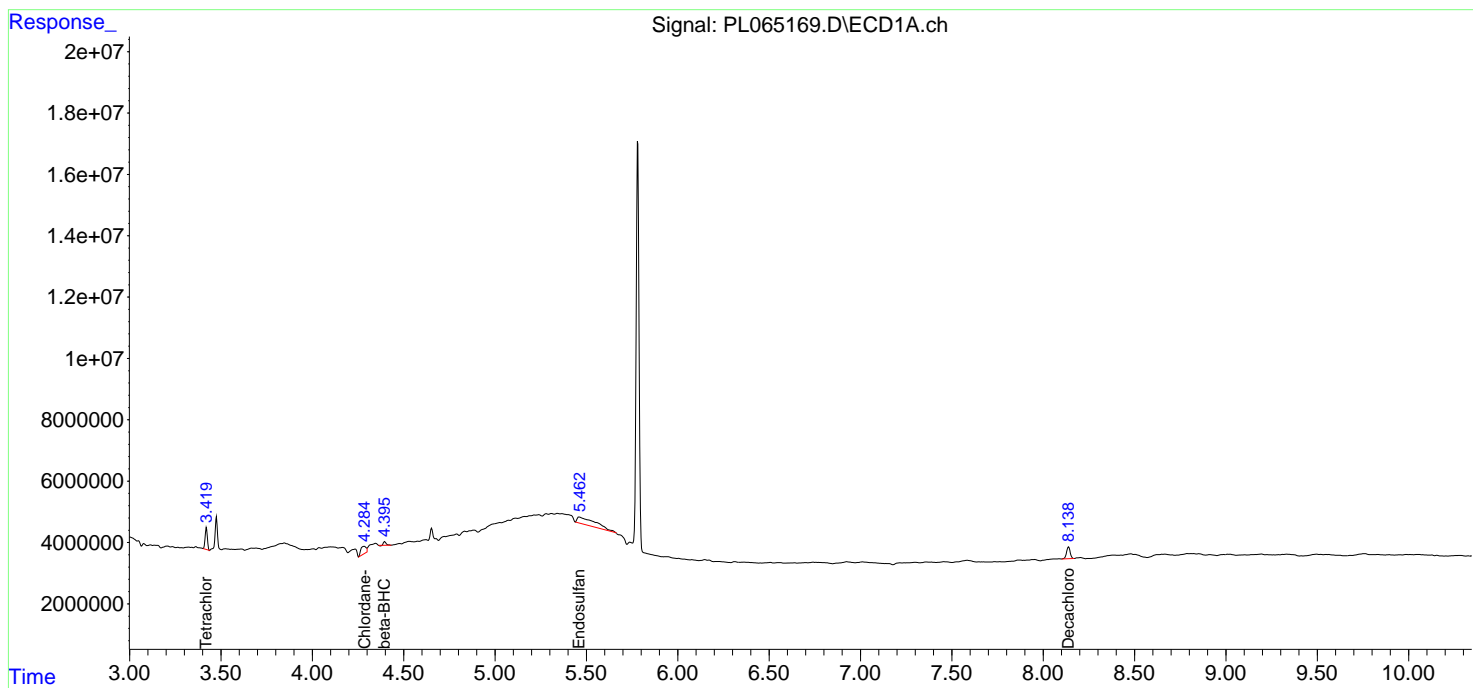
(f)=RT Delta > 1/2 Window (#)=Amounts differ by > 25% (m)=manual int.

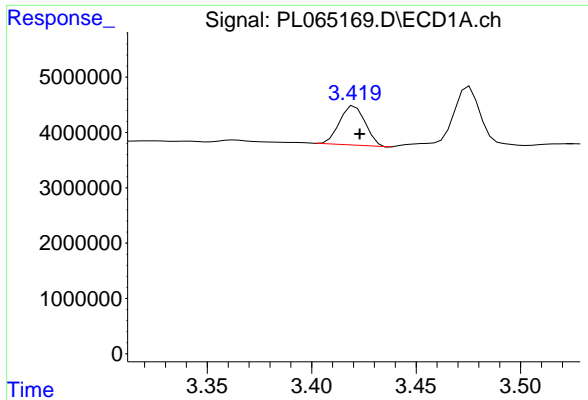
Data Path : Z:\pestpcbsrv\HPCHEM1\ECD\_L\Data\PL030921\  
 Data File : PL065169.D  
 Signal(s) : Signal #1: ECD1A.ch Signal #2: ECD2B.ch  
 Acq On : 09 Mar 2021 12:55  
 Operator : AR\AJ  
 Sample : M1599-01 10X  
 Misc :  
 ALS Vial : 13 Sample Multiplier: 1

Instrument :  
 ECD\_L  
 ClientSampled :

Integration File signal 1: autoint1.e  
 Integration File signal 2: autoint2.e  
 Quant Time: Mar 10 06:19:34 2021  
 Quant Method : Z:\pestpcbsrv\HPCHEM1\ECD\_L\methods\PL030521.M  
 Quant Title : GC Extractables  
 QLast Update : Fri Mar 05 02:26:14 2021  
 Response via : Initial Calibration  
 Integrator: ChemStation

Volume Inj. : 1 µl  
 Signal #1 Phase : ZB-MR2 Signal #2 Phase: ZB-MR1  
 Signal #1 Info : 30M x 0.32mm x0.2 Signal #2 Info : 30M x 0.32mm x0.5µm

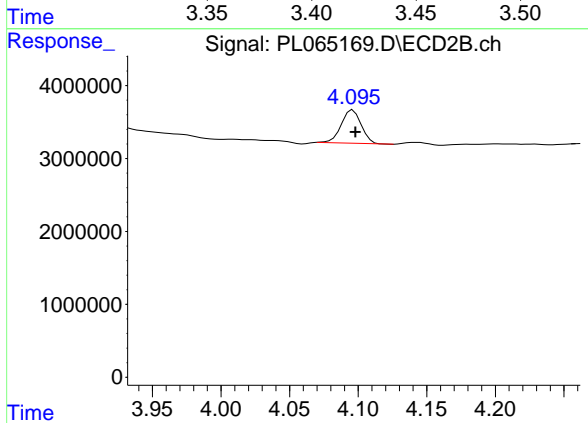




#1 Tetrachloro-m-xylene

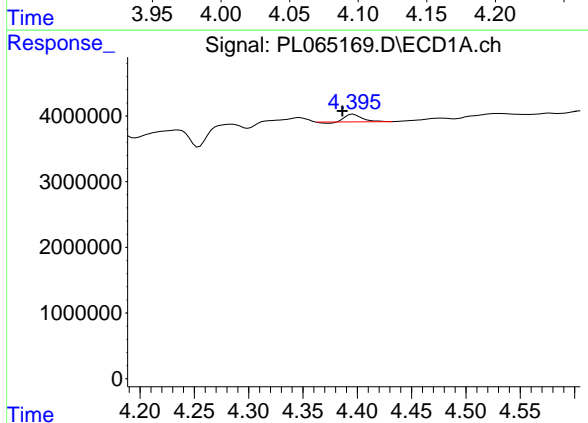
R.T.: 3.421 min  
 Delta R.T.: -0.002 min  
 Response: 6114251  
 Conc: 2.08 ng/ml

Instrument :  
 ECD\_L  
 ClientSampleId :



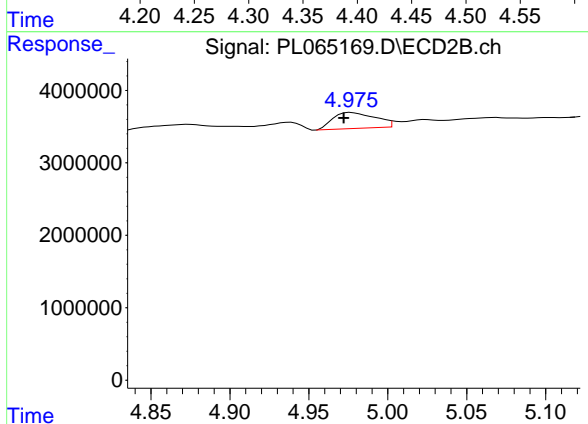
#1 Tetrachloro-m-xylene

R.T.: 4.096 min  
 Delta R.T.: -0.002 min  
 Response: 4646571  
 Conc: 1.87 ng/ml



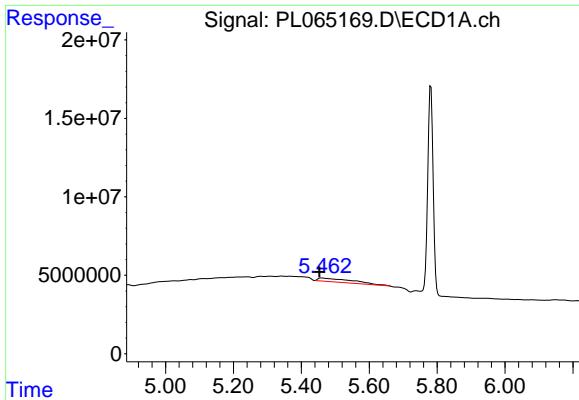
#6 beta-BHC

R.T.: 4.396 min  
 Delta R.T.: 0.010 min  
 Response: 1175210  
 Conc: 0.63 ng/ml



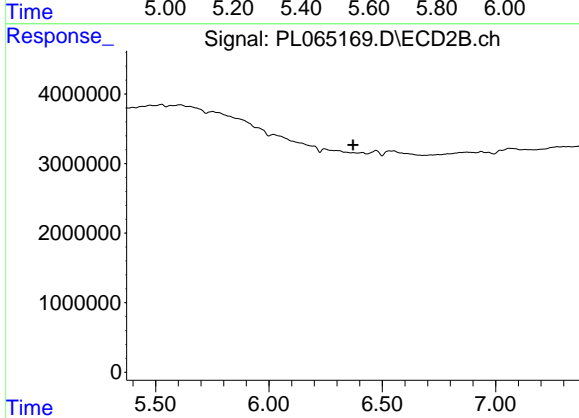
#6 beta-BHC

R.T.: 4.977 min  
 Delta R.T.: 0.005 min  
 Response: 4170351  
 Conc: 2.73 ng/ml



#9 Endosulfan I  
 R.T.: 5.460 min  
 Delta R.T.: 0.008 min  
 Response: 16328465  
 Conc: 4.57 ng/ml

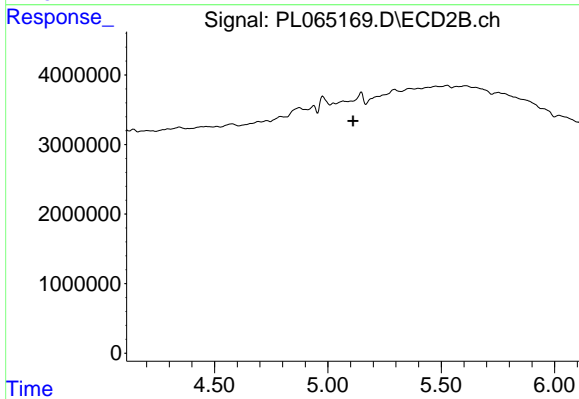
Instrument :  
 ECD\_L  
 ClientSampled :



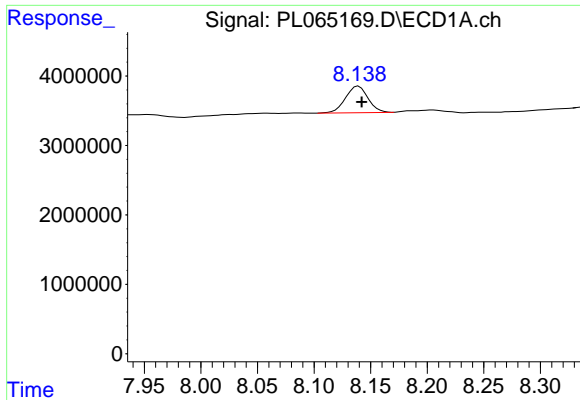
#9 Endosulfan I  
 R.T.: 0.000 min  
 Exp R.T. : 6.371 min  
 Response: 0  
 Conc: N.D.



#23 Chlordane-1  
 R.T.: 4.285 min  
 Delta R.T.: 0.004 min  
 Response: 4940401  
 Conc: 38.76 ng/ml



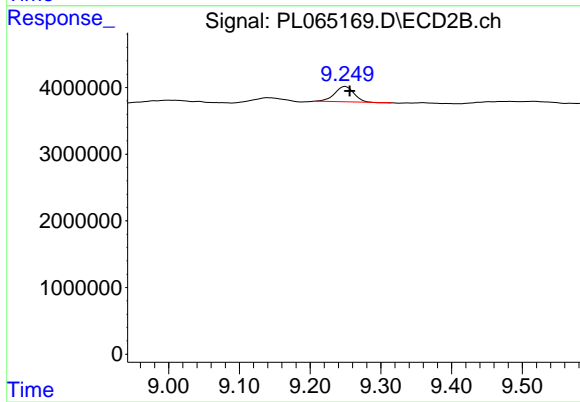
#23 Chlordane-1  
 R.T.: 0.000 min  
 Exp R.T. : 5.112 min  
 Response: 0  
 Conc: N.D.



#28 Decachlorobiphenyl

R.T.: 8.139 min  
Delta R.T.: -0.003 min  
Response: 5279639  
Conc: 1.90 ng/ml

Instrument :  
ECD\_L  
ClientSampleId :



#28 Decachlorobiphenyl

R.T.: 9.250 min  
Delta R.T.: -0.006 min  
Response: 4282543  
Conc: 1.95 ng/ml