

Data Path : Z:\pestpcbsrv\HPCHEM1\ECD_L\Data\PL031523\
 Data File : PL081469.D
 Signal(s) : Signal #1: ECD1A.ch Signal #2: ECD2B.ch
 Acq On : 15 Mar 2023 10:22
 Operator : AR\AJ
 Sample : PCHLORCCC500
 Misc :
 ALS Vial : 5 Sample Multiplier: 1

Instrument :
 ECD_L
 ClientSampleId :

Integration File signal 1: autoint1.e
 Integration File signal 2: autoint2.e
 Quant Time: Mar 15 21:55:54 2023
 Quant Method : Z:\pestpcbsrv\HPCHEM1\ECD_L\methods\PL030223.M
 Quant Title : GC Extractables
 QLast Update : Fri Mar 03 01:48:45 2023
 Response via : Initial Calibration
 Integrator: ChemStation

Volume Inj. : 1 µl
 Signal #1 Phase : ZB-MR2 Signal #2 Phase: ZB-MR1
 Signal #1 Info : 30M x 0.32mm x0.2 Signal #2 Info : 30M x 0.32mm x0.5µm

Compound	RT#1	RT#2	Resp#1	Resp#2	ng/ml	ng/ml

System Monitoring Compounds						
1) SA Tetrachlo...	3.338	2.659	106.4E6	113.8E6	49.244	56.225
28) SA Decachlor...	8.764	7.786	70364400	88278718	46.155	46.086
Target Compounds						
2) A alpha-BHC	3.799	3.143f	3202799	162441	1.007	0.055 #
3) MA gamma-BHC...	4.137f	0.000	1190995	0	0.403	N.D. #
4) MA Heptachlor	4.696	3.823	60386727	55216683	21.884	20.009
5) MB Aldrin	5.011f	4.119	48550994	4409402	19.083	1.682 #
6) B beta-BHC	4.341f	3.823f	3040169	55216683	2.209	47.575 #
7) B delta-BHC	4.558	4.007f	2134493	5083399	0.768	1.996 #
8) B Heptachlo...	5.446	0.000	27126347	0	11.494	N.D. #
9) A Endosulfan I	0.000	4.962f	0	10330087	N.D.	4.563 #
10) B gamma-Chl...	5.716	4.853	175.9E6	122.3E6	77.105	49.970 #
11) B alpha-Chl...	5.796	4.914	210.7E6	125.2E6	93.525	51.126 #
12) B 4,4'-DDE	5.950f	5.100f	1301689	308086	0.665	0.157 #
13) MA Dieldrin	6.115	5.260f	7651629	453441	3.656	0.201 #
14) MA Endrin	6.369f	5.518	-1647956	6085864	N.D.	3.028
15) B Endosulfa...	6.547f	5.808	3457174	37171645	1.983	20.161 #
17) MA 4,4'-DDT	6.794	5.913	1301265	580936	0.820	0.362 #
18) B Endrin al...	6.695	5.995	2384350	861168	1.666	0.568 #
19) B Endosulfa...	6.924	6.214	489162	680471	0.272	0.354 #
20) A Methoxychlor	7.300f	6.476f	226208	132584	0.263	0.143 #
23) Chlordane-1	4.483	3.649	46662909	37153871	487.410	450.583
24) Chlordane-2	5.011	4.225	48550994	44416469	485.122	433.885
25) Chlordane-3	5.716	4.853	175.9E6	122.3E6	481.021	452.582
26) Chlordane-4	5.796	4.914	210.7E6	125.2E6	479.383	445.751
27) Chlordane-5	6.638	5.581	34409508	33315531	456.586	482.244

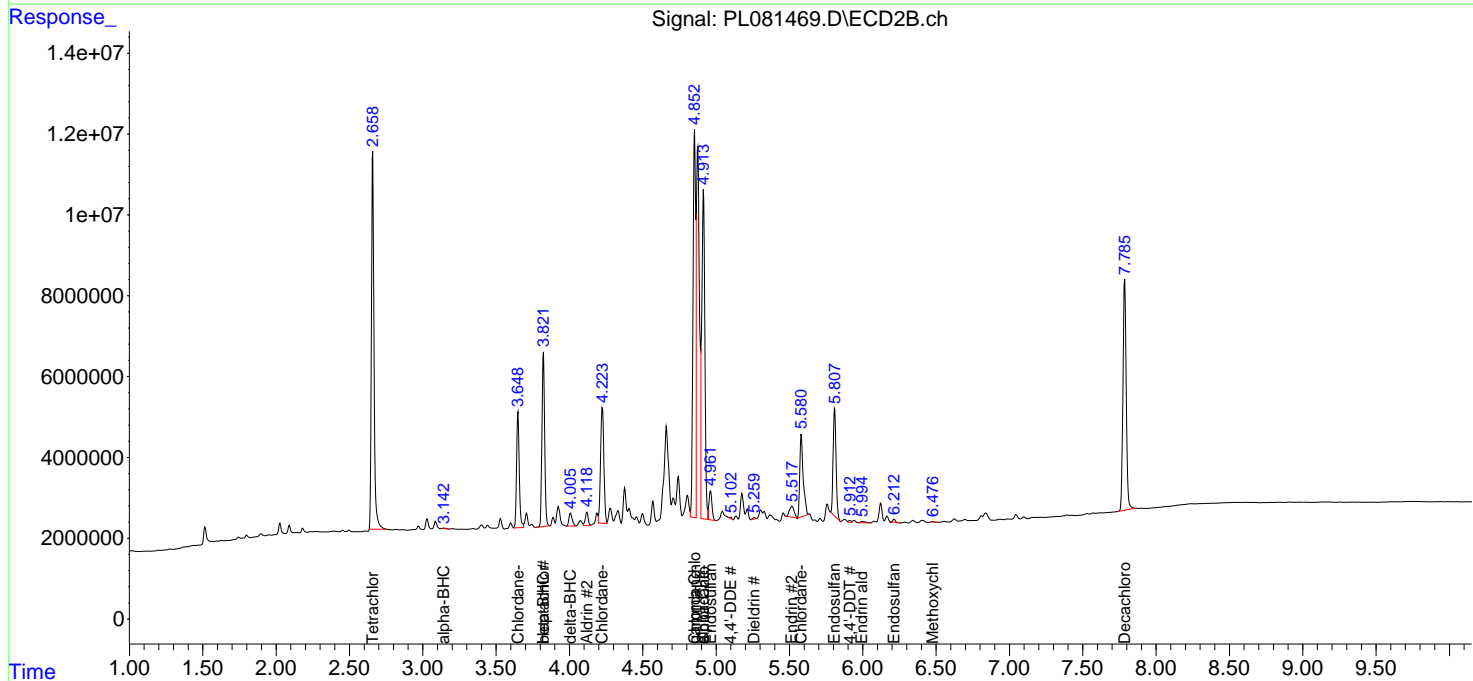
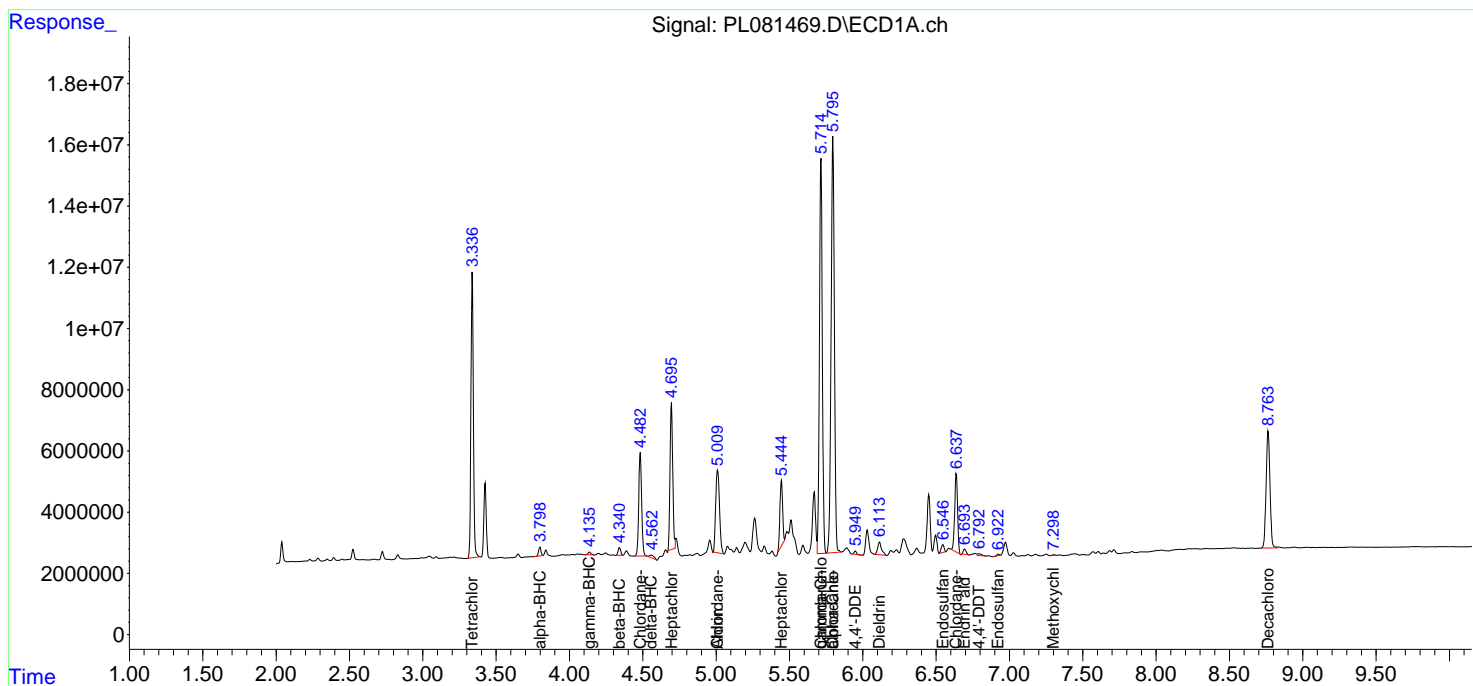
(f)=RT Delta > 1/2 Window (#)=Amounts differ by > 25% (m)=manual int.

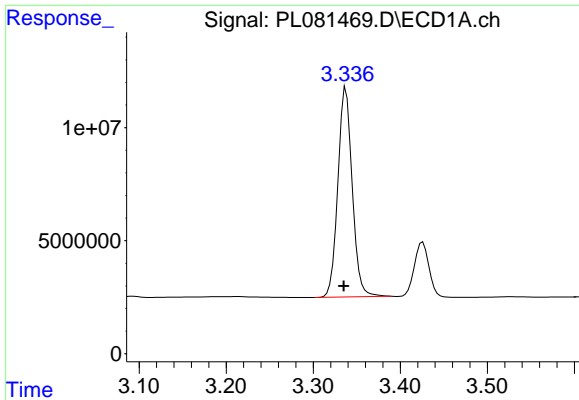
Data Path : Z:\pestpcbsrv\HPCHEM1\ECD_L\Data\PL031523\
 Data File : PL081469.D
 Signal(s) : Signal #1: ECD1A.ch Signal #2: ECD2B.ch
 Acq On : 15 Mar 2023 10:22
 Operator : AR\AJ
 Sample : PCHLORCCC500
 Misc :
 ALS Vial : 5 Sample Multiplier: 1

Instrument :
 ECD_L
 ClientSampleId :

Integration File signal 1: autoint1.e
 Integration File signal 2: autoint2.e
 Quant Time: Mar 15 21:55:54 2023
 Quant Method : Z:\pestpcbsrv\HPCHEM1\ECD_L\methods\PL030223.M
 Quant Title : GC Extractables
 QLast Update : Fri Mar 03 01:48:45 2023
 Response via : Initial Calibration
 Integrator: ChemStation

Volume Inj. : 1 µl
 Signal #1 Phase : ZB-MR2 Signal #2 Phase: ZB-MR1
 Signal #1 Info : 30M x 0.32mm x0.2 Signal #2 Info : 30M x 0.32mm x0.5µm

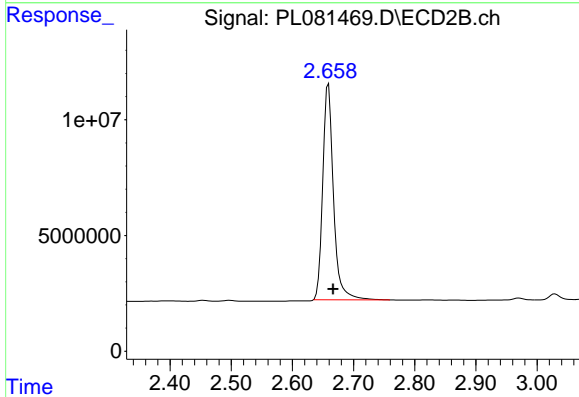




#1 Tetrachloro-m-xylene

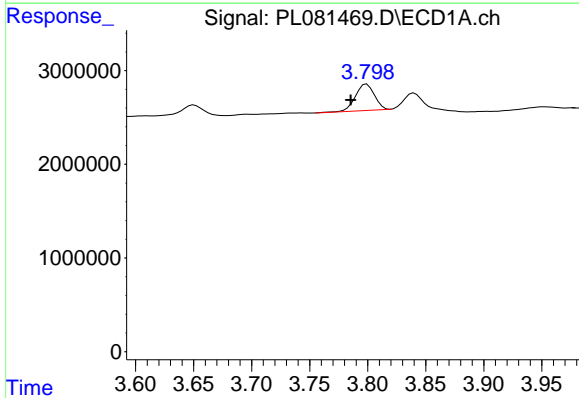
R.T.: 3.338 min
 Delta R.T.: 0.003 min
 Response: 106394934
 Conc: 49.24 ng/ml

Instrument :
 ECD_L
 ClientSampleId :



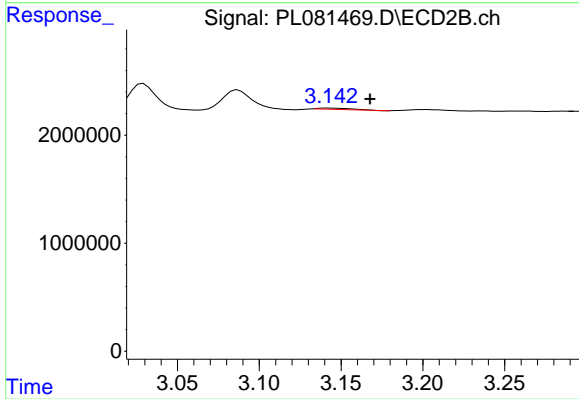
#1 Tetrachloro-m-xylene

R.T.: 2.659 min
 Delta R.T.: -0.007 min
 Response: 113789878
 Conc: 56.23 ng/ml



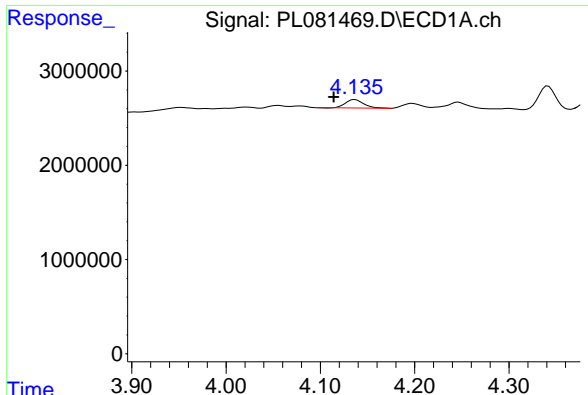
#2 alpha-BHC

R.T.: 3.799 min
 Delta R.T.: 0.014 min
 Response: 3202799
 Conc: 1.01 ng/ml



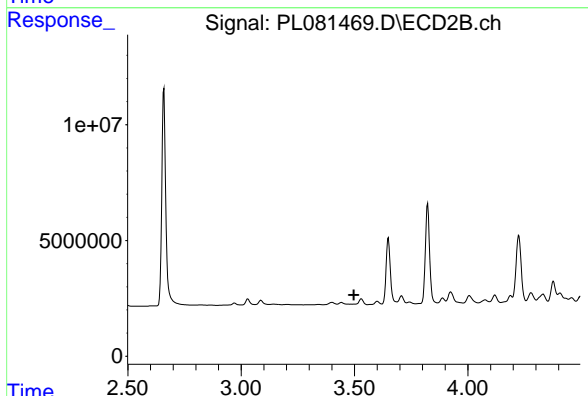
#2 alpha-BHC

R.T.: 3.143 min
 Delta R.T.: -0.025 min
 Response: 162441
 Conc: 0.06 ng/ml

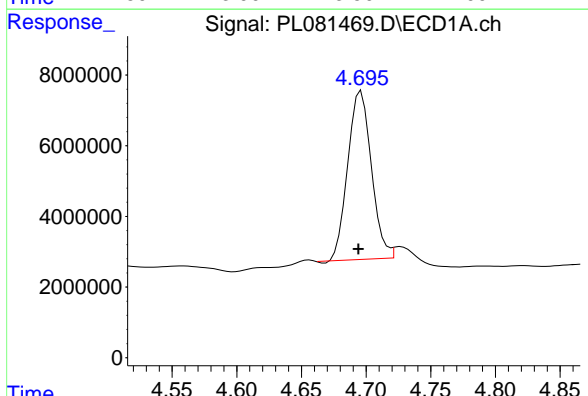


#3 gamma-BHC (Lindane)
 R.T.: 4.137 min
 Delta R.T.: 0.022 min
 Response: 1190995
 Conc: 0.40 ng/ml

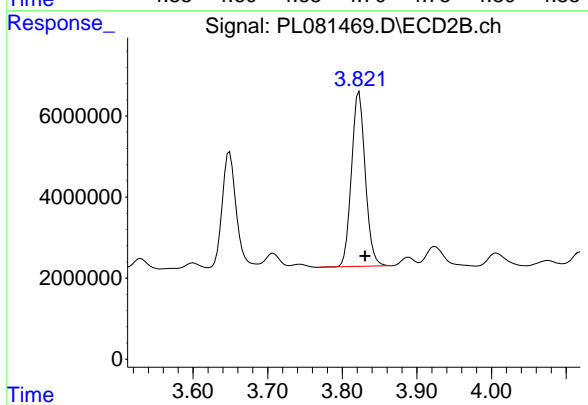
Instrument :
 ECD_L
 ClientSampleId :



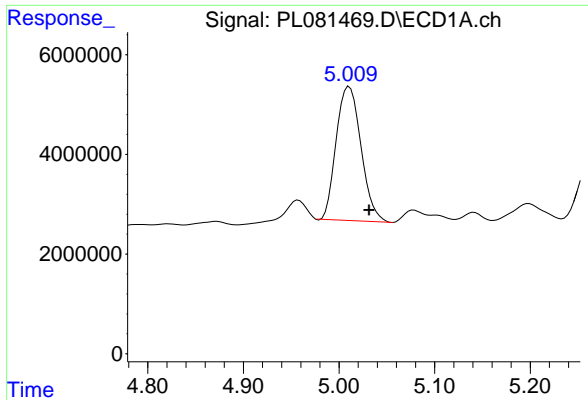
#3 gamma-BHC (Lindane)
 R.T.: 0.000 min
 Exp R.T. : 3.496 min
 Response: 0
 Conc: N.D.



#4 Heptachlor
 R.T.: 4.696 min
 Delta R.T.: 0.002 min
 Response: 60386727
 Conc: 21.88 ng/ml

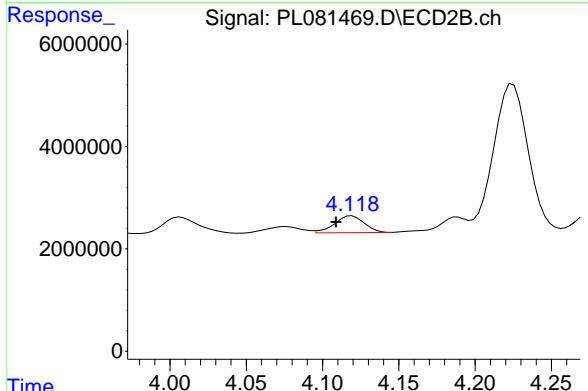


#4 Heptachlor
 R.T.: 3.823 min
 Delta R.T.: -0.008 min
 Response: 55216683
 Conc: 20.01 ng/ml

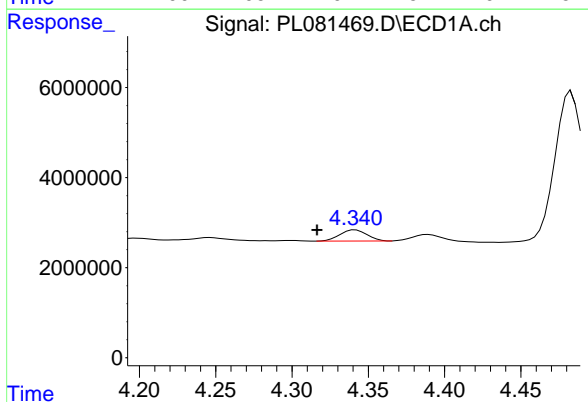


#5 Aldrin
 R.T.: 5.011 min
 Delta R.T.: -0.021 min
 Response: 48550994
 Conc: 19.08 ng/ml

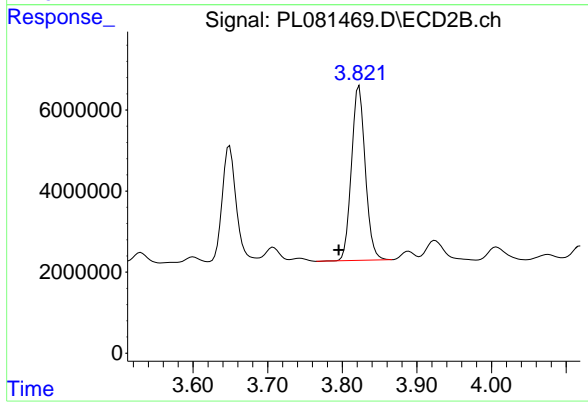
Instrument :
 ECD_L
 ClientSampleId :



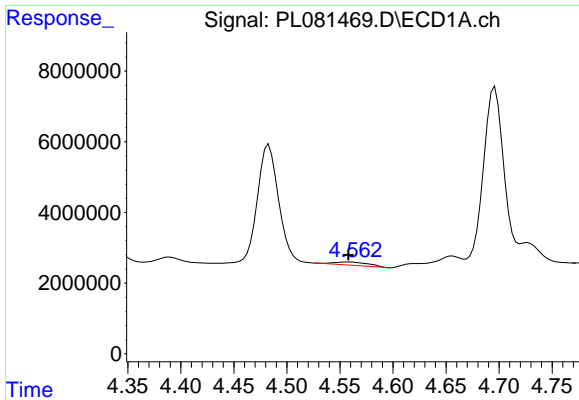
#5 Aldrin
 R.T.: 4.119 min
 Delta R.T.: 0.010 min
 Response: 4409402
 Conc: 1.68 ng/ml



#6 beta-BHC
 R.T.: 4.341 min
 Delta R.T.: 0.025 min
 Response: 3040169
 Conc: 2.21 ng/ml



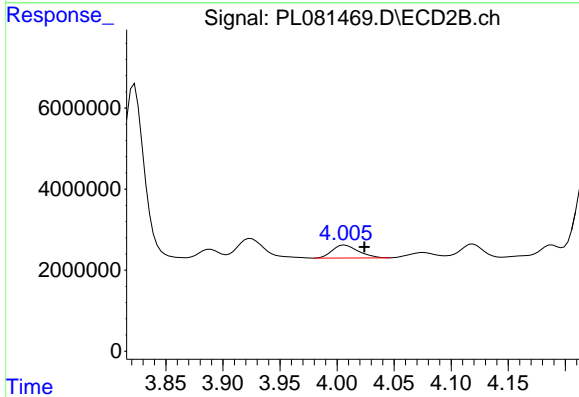
#6 beta-BHC
 R.T.: 3.823 min
 Delta R.T.: 0.027 min
 Response: 55216683
 Conc: 47.57 ng/ml



#7 delta-BHC

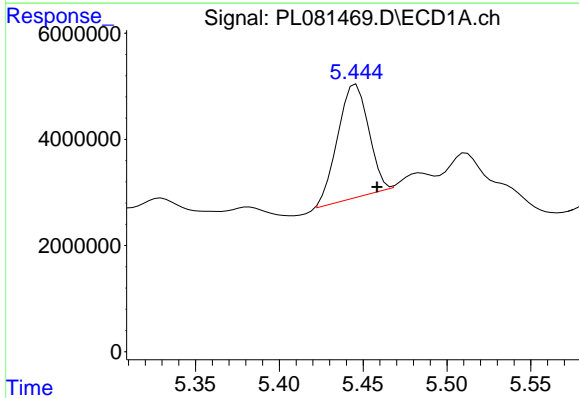
R.T.: 4.558 min
 Delta R.T.: 0.000 min
 Response: 2134493
 Conc: 0.77 ng/ml

Instrument :
 ECD_L
 ClientSampleId :



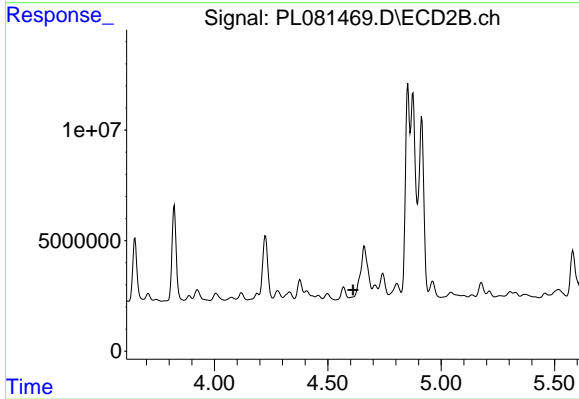
#7 delta-BHC

R.T.: 4.007 min
 Delta R.T.: -0.017 min
 Response: 5083399
 Conc: 2.00 ng/ml



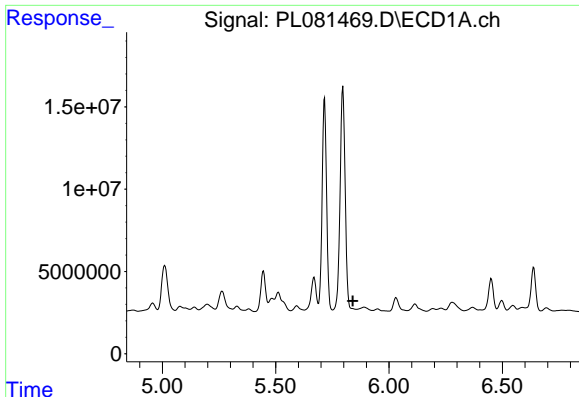
#8 Heptachlor epoxide

R.T.: 5.446 min
 Delta R.T.: -0.013 min
 Response: 27126347
 Conc: 11.49 ng/ml



#8 Heptachlor epoxide

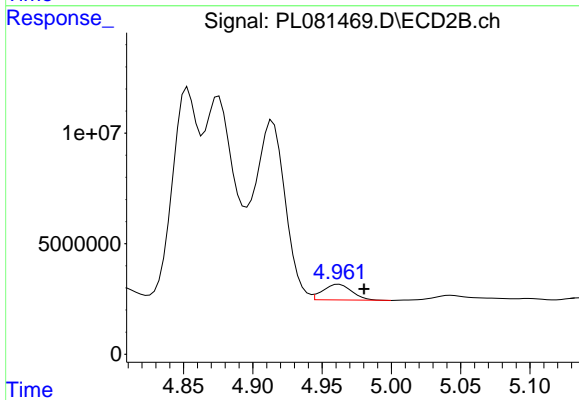
R.T.: 0.000 min
 Exp R.T. : 4.612 min
 Response: 0
 Conc: N.D.



#9 Endosulfan I

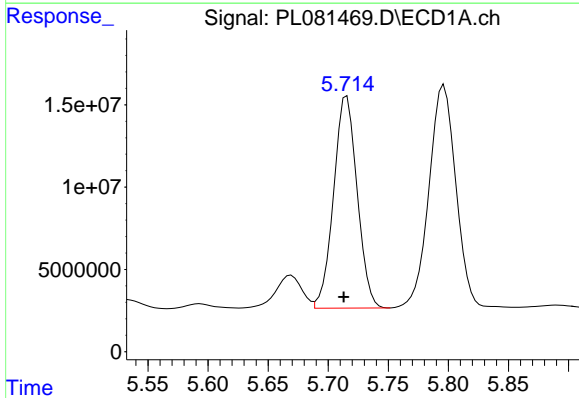
R.T.: 0.000 min
 Exp R.T.: 5.840 min
 Response: 0
 Conc: N.D.

Instrument :
 ECD_L
 ClientSampleId :



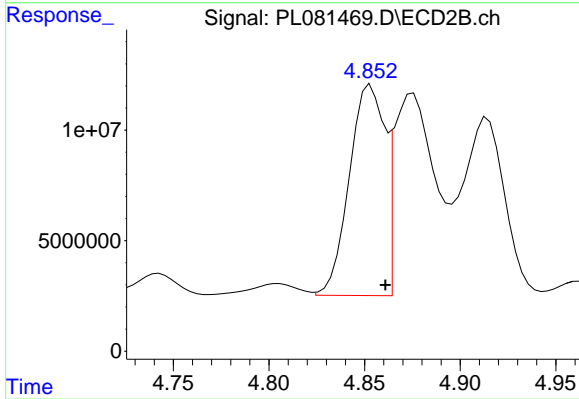
#9 Endosulfan I

R.T.: 4.962 min
 Delta R.T.: -0.018 min
 Response: 10330087
 Conc: 4.56 ng/ml



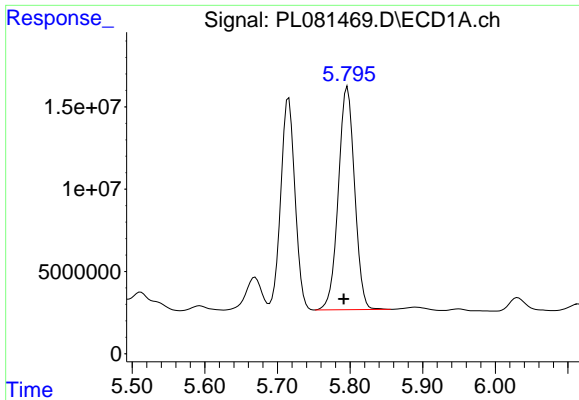
#10 gamma-Chlordane

R.T.: 5.716 min
 Delta R.T.: 0.003 min
 Response: 175946452
 Conc: 77.11 ng/ml



#10 gamma-Chlordane

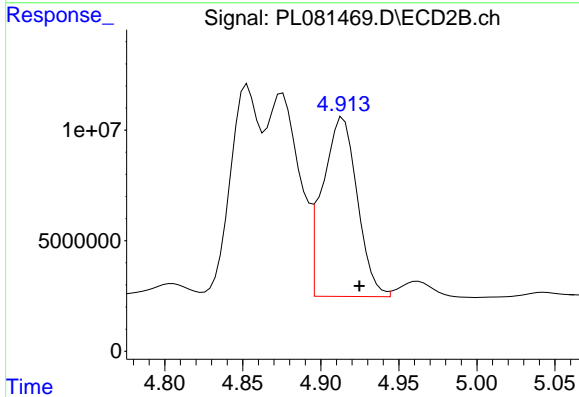
R.T.: 4.853 min
 Delta R.T.: -0.008 min
 Response: 122315175
 Conc: 49.97 ng/ml



#11 alpha-Chlordane

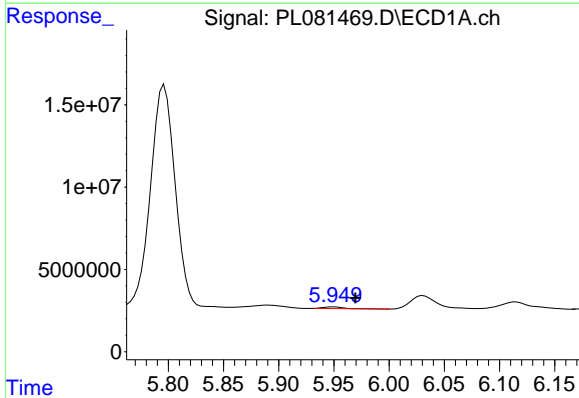
R.T.: 5.796 min
 Delta R.T.: 0.005 min
 Response: 210704749
 Conc: 93.52 ng/ml

Instrument :
 ECD_L
 ClientSampleId :



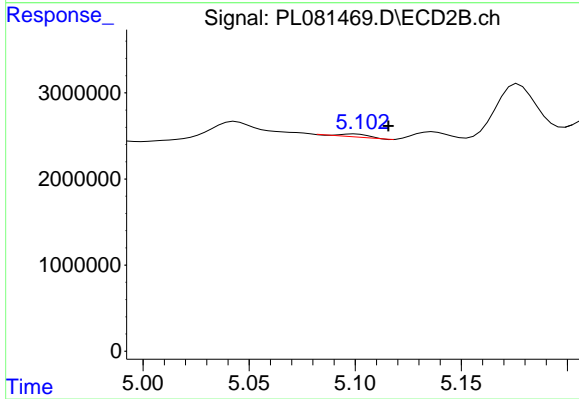
#11 alpha-Chlordane

R.T.: 4.914 min
 Delta R.T.: -0.010 min
 Response: 125184217
 Conc: 51.13 ng/ml



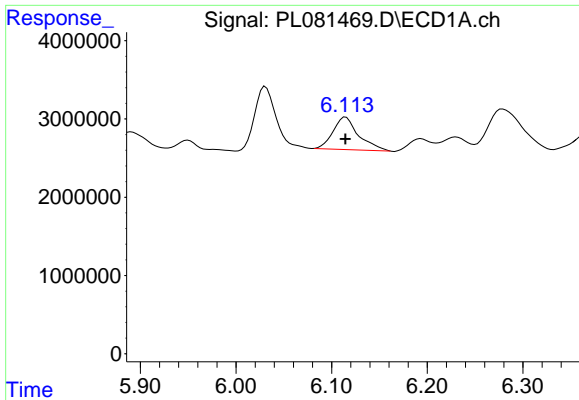
#12 4,4'-DDE

R.T.: 5.950 min
 Delta R.T.: -0.020 min
 Response: 1301689
 Conc: 0.67 ng/ml



#12 4,4'-DDE

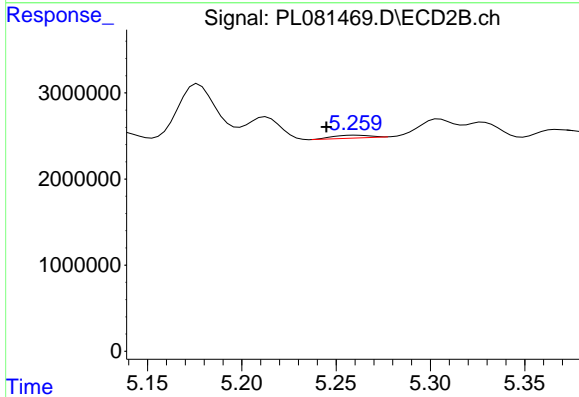
R.T.: 5.100 min
 Delta R.T.: -0.015 min
 Response: 308086
 Conc: 0.16 ng/ml



#13 Dieldrin

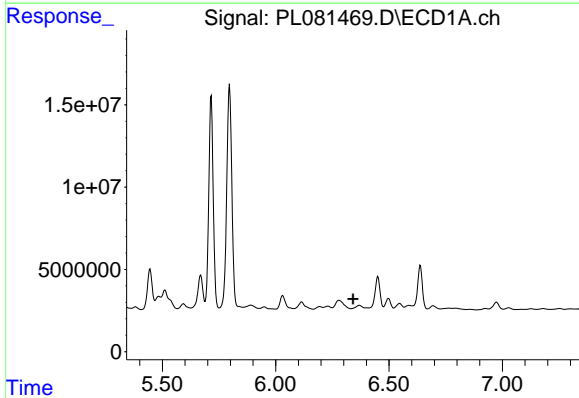
R.T.: 6.115 min
 Delta R.T.: 0.000 min
 Response: 7651629
 Conc: 3.66 ng/ml

Instrument :
 ECD_L
 ClientSampleId :



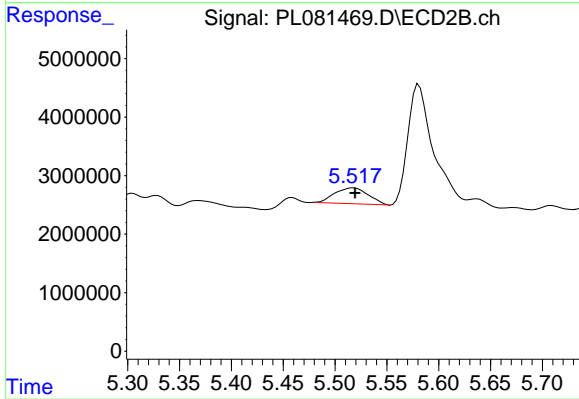
#13 Dieldrin

R.T.: 5.260 min
 Delta R.T.: 0.015 min
 Response: 453441
 Conc: 0.20 ng/ml



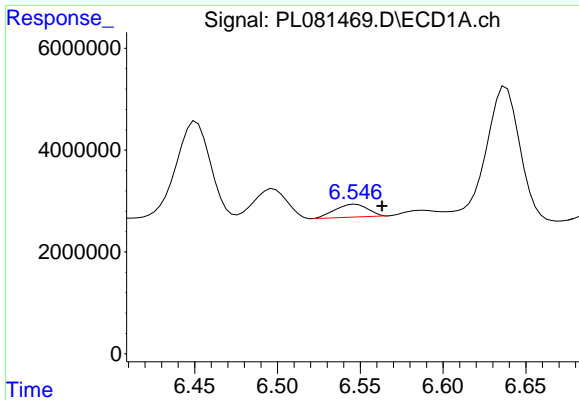
#14 Endrin

R.T.: 6.369 min
 Delta R.T.: 0.027 min
 Response: -1647956
 Conc: N.D.



#14 Endrin

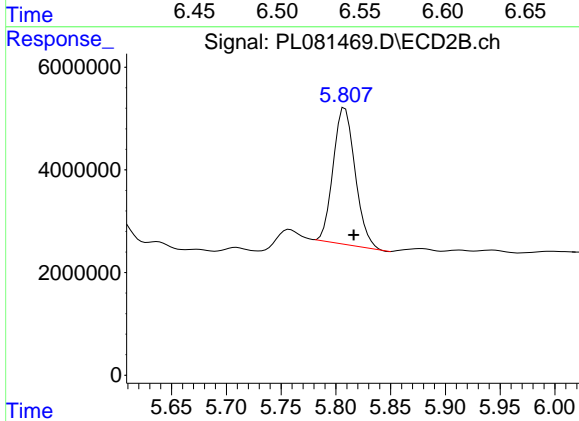
R.T.: 5.518 min
 Delta R.T.: -0.001 min
 Response: 6085864
 Conc: 3.03 ng/ml



#15 Endosulfan II

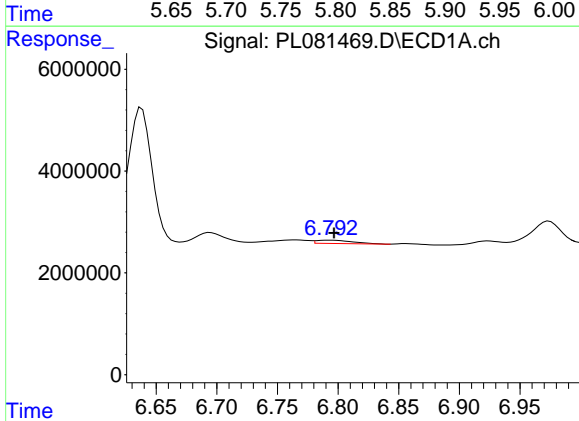
R.T.: 6.547 min
 Delta R.T.: -0.016 min
 Response: 3457174
 Conc: 1.98 ng/ml

Instrument :
 ECD_L
 ClientSampleId :



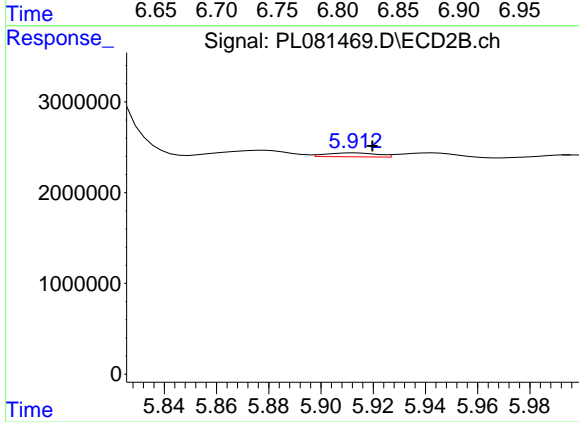
#15 Endosulfan II

R.T.: 5.808 min
 Delta R.T.: -0.008 min
 Response: 37171645
 Conc: 20.16 ng/ml



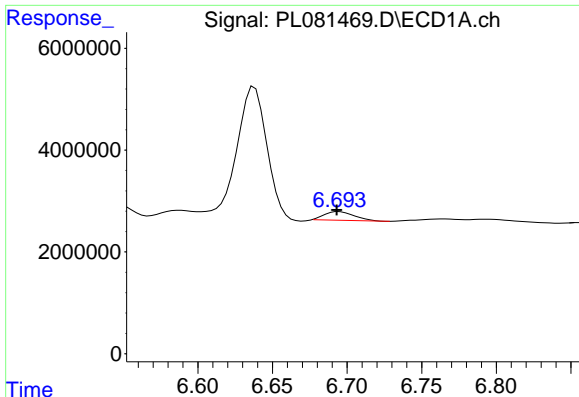
#17 4,4'-DDT

R.T.: 6.794 min
 Delta R.T.: -0.003 min
 Response: 1301265
 Conc: 0.82 ng/ml



#17 4,4'-DDT

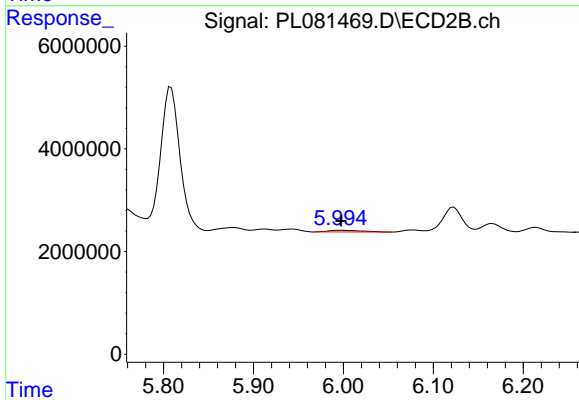
R.T.: 5.913 min
 Delta R.T.: -0.007 min
 Response: 580936
 Conc: 0.36 ng/ml



#18 Endrin aldehyde

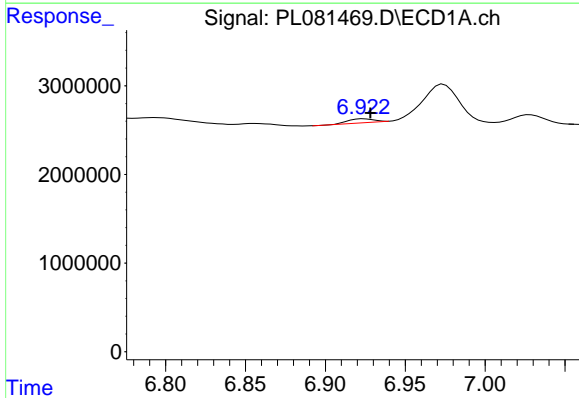
R.T.: 6.695 min
 Delta R.T.: 0.002 min
 Response: 2384350
 Conc: 1.67 ng/ml

Instrument :
 ECD_L
 ClientSampleId :



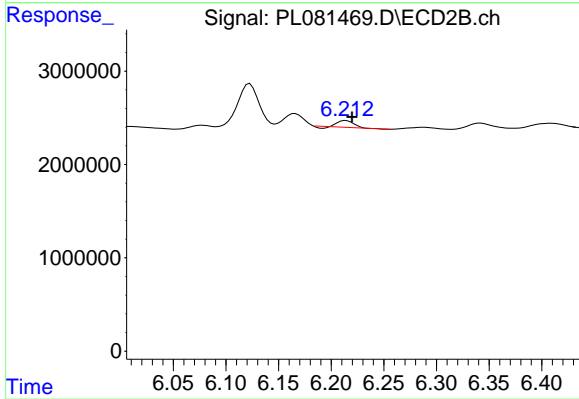
#18 Endrin aldehyde

R.T.: 5.995 min
 Delta R.T.: -0.002 min
 Response: 861168
 Conc: 0.57 ng/ml



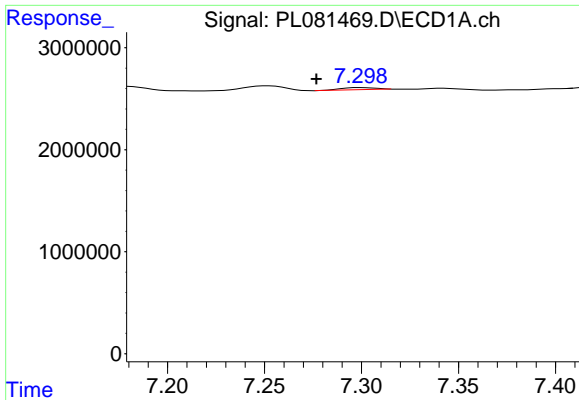
#19 Endosulfan Sulfate

R.T.: 6.924 min
 Delta R.T.: -0.004 min
 Response: 489162
 Conc: 0.27 ng/ml



#19 Endosulfan Sulfate

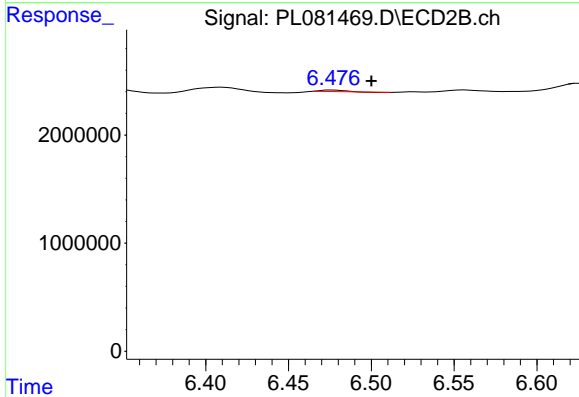
R.T.: 6.214 min
 Delta R.T.: -0.006 min
 Response: 680471
 Conc: 0.35 ng/ml



#20 Methoxychlor

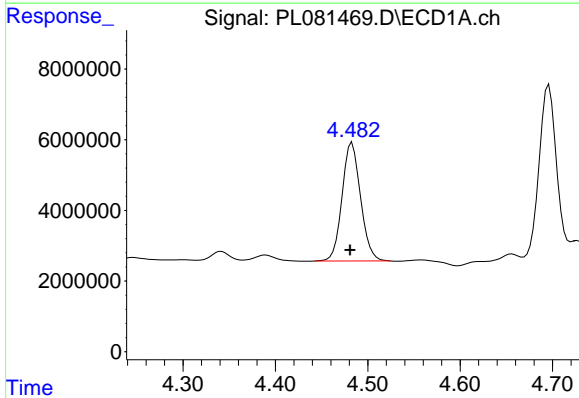
R.T.: 7.300 min
 Delta R.T.: 0.023 min
 Response: 226208
 Conc: 0.26 ng/ml

Instrument :
 ECD_L
 ClientSampleId :



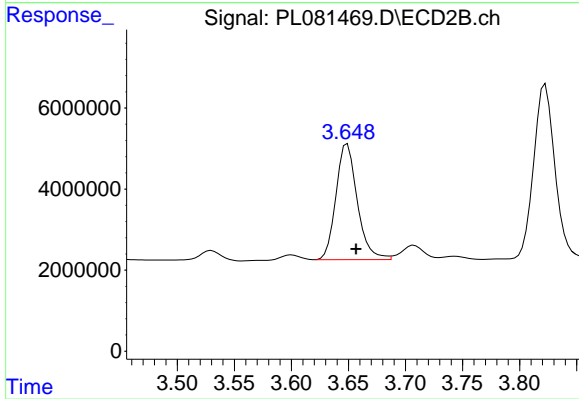
#20 Methoxychlor

R.T.: 6.476 min
 Delta R.T.: -0.024 min
 Response: 132584
 Conc: 0.14 ng/ml



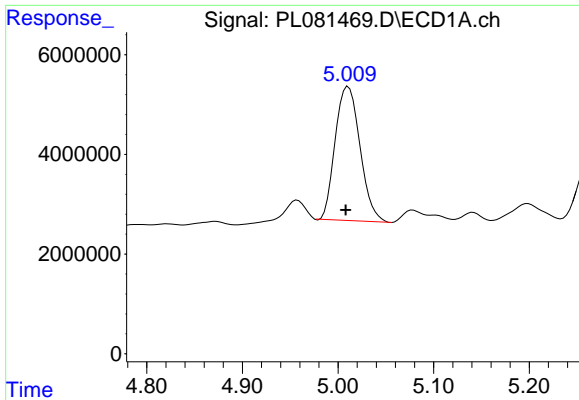
#23 Chlordane-1

R.T.: 4.483 min
 Delta R.T.: 0.002 min
 Response: 46662909
 Conc: 487.41 ng/ml



#23 Chlordane-1

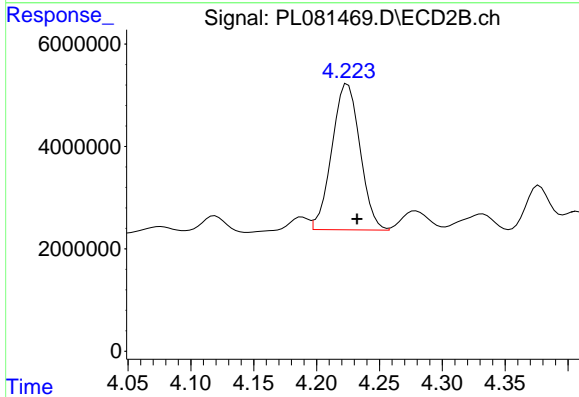
R.T.: 3.649 min
 Delta R.T.: -0.008 min
 Response: 37153871
 Conc: 450.58 ng/ml



#24 Chlordane-2

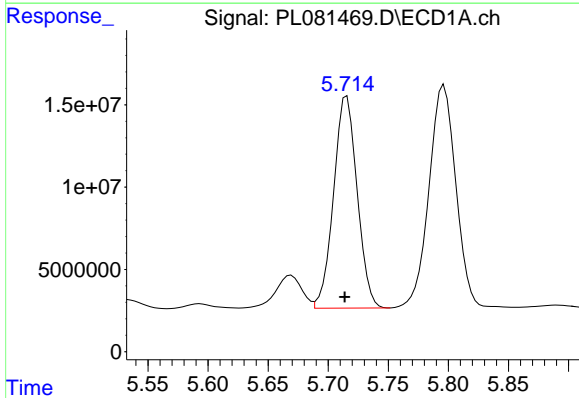
R.T.: 5.011 min
 Delta R.T.: 0.003 min
 Response: 48550994
 Conc: 485.12 ng/ml

Instrument :
 ECD_L
 ClientSampleId :



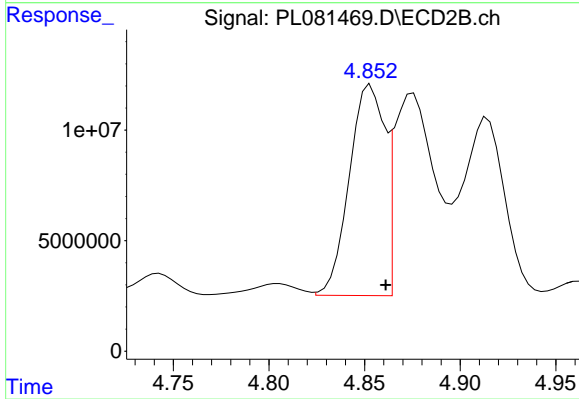
#24 Chlordane-2

R.T.: 4.225 min
 Delta R.T.: -0.007 min
 Response: 44416469
 Conc: 433.89 ng/ml



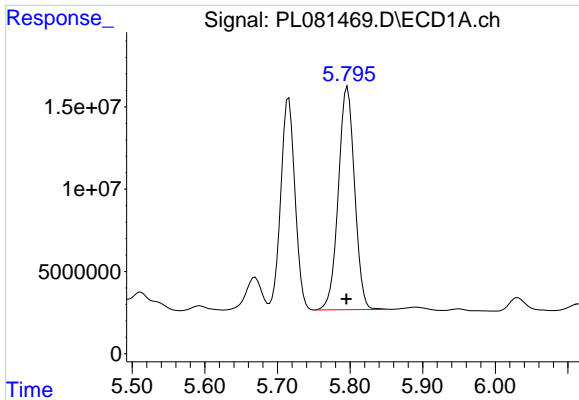
#25 Chlordane-3

R.T.: 5.716 min
 Delta R.T.: 0.002 min
 Response: 175946452
 Conc: 481.02 ng/ml



#25 Chlordane-3

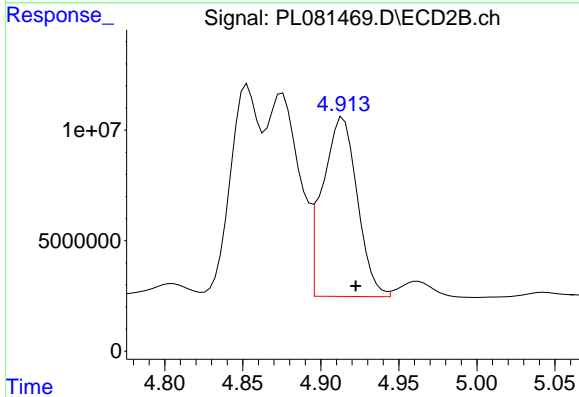
R.T.: 4.853 min
 Delta R.T.: -0.008 min
 Response: 122315175
 Conc: 452.58 ng/ml



#26 Chlordane-4

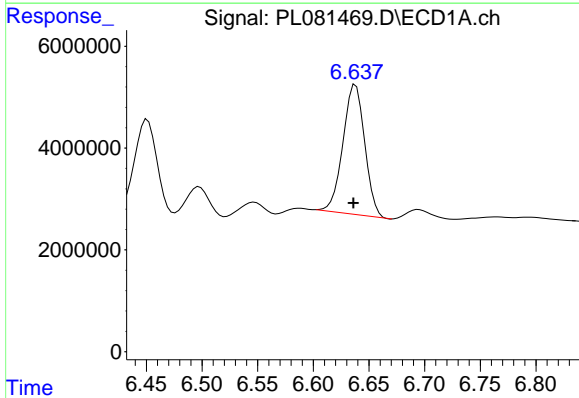
R.T.: 5.796 min
 Delta R.T.: 0.001 min
 Response: 210704749
 Conc: 479.38 ng/ml

Instrument :
 ECD_L
 ClientSampleId :



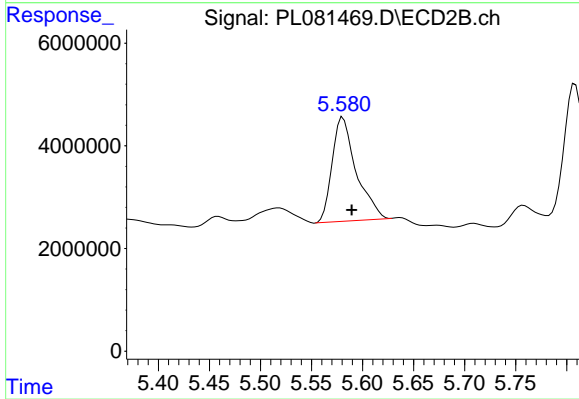
#26 Chlordane-4

R.T.: 4.914 min
 Delta R.T.: -0.008 min
 Response: 125184217
 Conc: 445.75 ng/ml



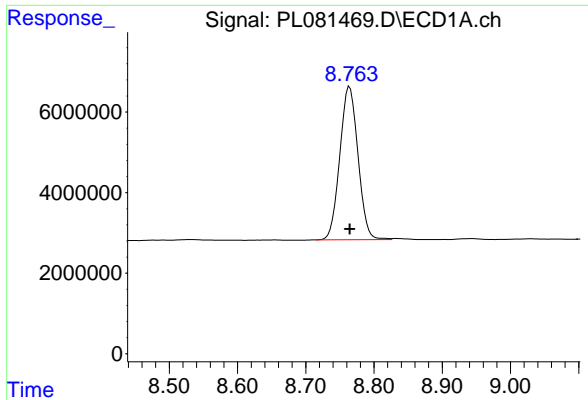
#27 Chlordane-5

R.T.: 6.638 min
 Delta R.T.: 0.002 min
 Response: 34409508
 Conc: 456.59 ng/ml



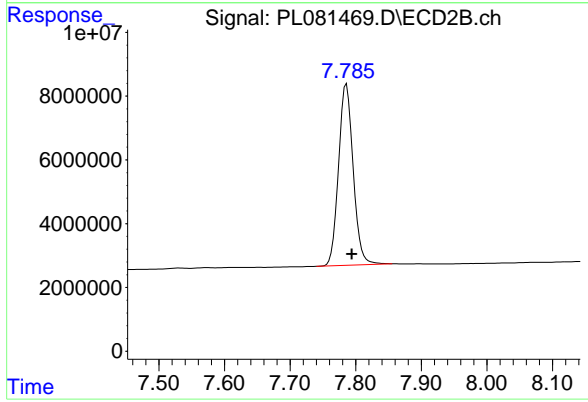
#27 Chlordane-5

R.T.: 5.581 min
 Delta R.T.: -0.009 min
 Response: 33315531
 Conc: 482.24 ng/ml



#28 Decachlorobiphenyl
R.T.: 8.764 min
Delta R.T.: 0.000 min
Response: 70364400
Conc: 46.15 ng/ml

Instrument :
ECD_L
ClientSampleId :



#28 Decachlorobiphenyl
R.T.: 7.786 min
Delta R.T.: -0.008 min
Response: 88278718
Conc: 46.09 ng/ml