

Data Path : Z:\pestpcbsrv\HPCHEM1\ECD_L\Data\PL032922\
 Data File : PL073730.D
 Signal(s) : Signal #1: ECD1A.ch Signal #2: ECD2B.ch
 Acq On : 29 Mar 2022 16:53
 Operator : AR\AJ
 Sample : N2155-02
 Misc :
 ALS Vial : 16 Sample Multiplier: 1

Instrument :
 ECD_L
 ClientSampleId :

Integration File signal 1: autoint1.e
 Integration File signal 2: autoint2.e
 Quant Time: Mar 30 01:06:25 2022
 Quant Method : Z:\pestpcbsrv\HPCHEM1\ECD_L\methods\PL031122.M
 Quant Title : GC Extractables
 QLast Update : Mon Mar 14 04:12:46 2022
 Response via : Initial Calibration
 Integrator: ChemStation

Volume Inj. : 1 µl
 Signal #1 Phase : ZB-MR2 Signal #2 Phase: ZB-MR1
 Signal #1 Info : 30M x 0.32mm x0.2 Signal #2 Info : 30M x 0.32mm x0.5µm

Compound	RT#1	RT#2	Resp#1	Resp#2	ng/ml	ng/ml
System Monitoring Compounds						
1) SA Tetrachlo...	4.642	5.491	3478022	16701124	10.859	10.176
28) SA Decachlor...	10.416	11.333	6540416	21739072	12.862	12.157
Target Compounds						
2) A alpha-BHC	5.362	6.070f	51917	48241	0.126	0.021 #
3) MA gamma-BHC...	0.000	6.457	0	420661	N.D.	0.197 #
4) MA Heptachlor	6.189	7.102	314727	1060508	0.698	0.453 #
5) MB Aldrin	6.507	7.445f	762998	6471884	1.847	3.089 #
6) B beta-BHC	0.000	6.677	0	560561	N.D.	0.538 #
7) B delta-BHC	6.425	6.967f	300360	808555	0.748	0.375 #
8) B Heptachlo...	0.000	7.925	0	1056527	N.D.	0.529 #
10) B gamma-Chl...	7.351f	8.196	1086163	6327132	2.484	3.098
11) B alpha-Chl...	7.433	8.283	1411011	12310760	3.193	6.155 #
12) B 4,4'-DDE	7.648	8.461	2057286	10822197	5.733	6.038
13) MA Dieldrin	7.786	8.616	613390	567172	1.472	0.307 #
14) MA Endrin	8.087f	8.850	-46969	1696896	N.D.	1.102
15) B Endosulfa...	8.381	9.070	948619	309048	2.427	0.201 #
16) A 4,4'-DDD	0.000	9.001	0	3892748	N.D.	2.667 #
17) MA 4,4'-DDT	8.490	9.308	1347715	1160070	3.564	0.710 #
18) B Endrin al...	8.592f	0.000	227646	0	0.720	N.D. #
19) B Endosulfa...	8.799	9.424f	313490	717899	0.742	0.455 #
21) B Endrin ke...	0.000	9.906f	0	2931584	N.D.	1.776 #
23) Chlordane-1	5.974	6.863	957451	5120957	80.763	74.963
24) Chlordane-2	6.664	7.445	1553952	6471884	95.259	90.045
25) Chlordane-3	7.351f	8.196	1086163	6327132	26.599	23.336
26) Chlordane-4	7.433	8.283	1411011	12310760	31.836	37.164
27) Chlordane-5	8.381	9.150	948619	1950731	57.930	35.940 #

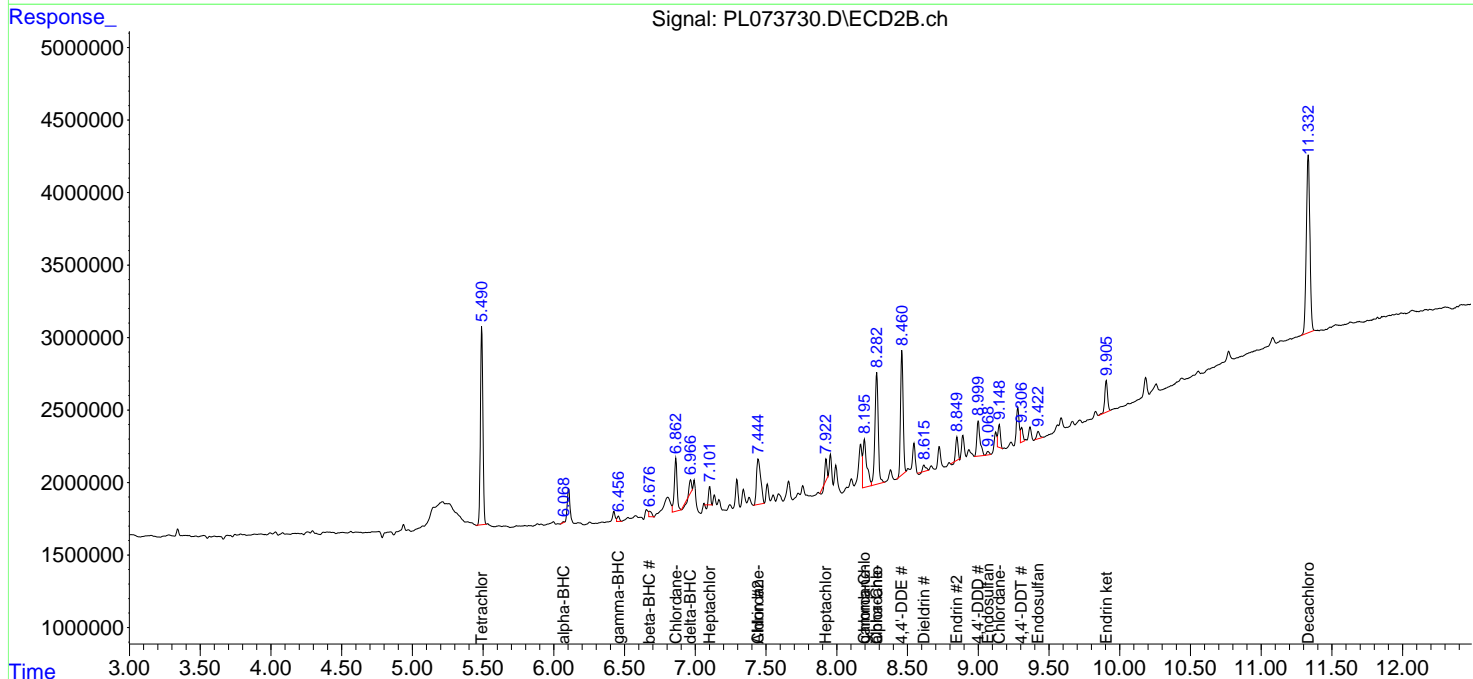
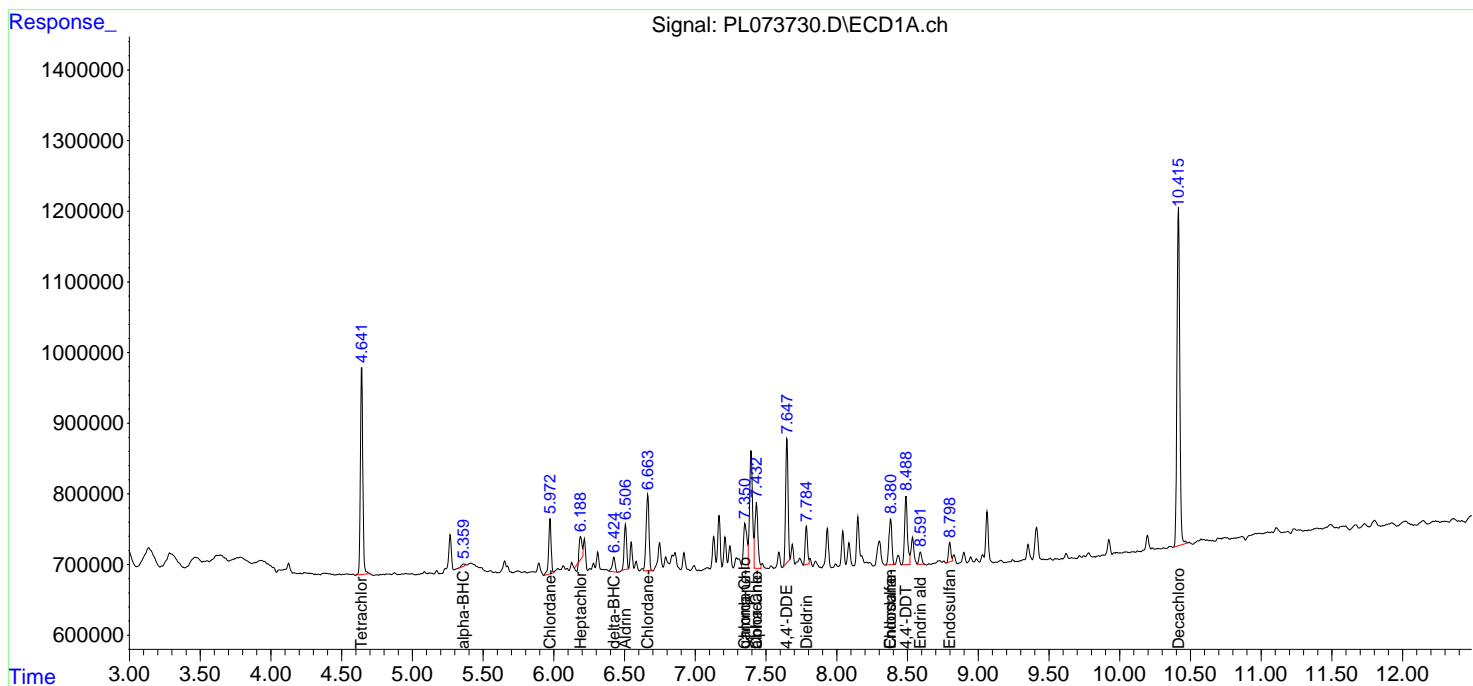
(f)=RT Delta > 1/2 Window (#)=Amounts differ by > 25% (m)=manual int.

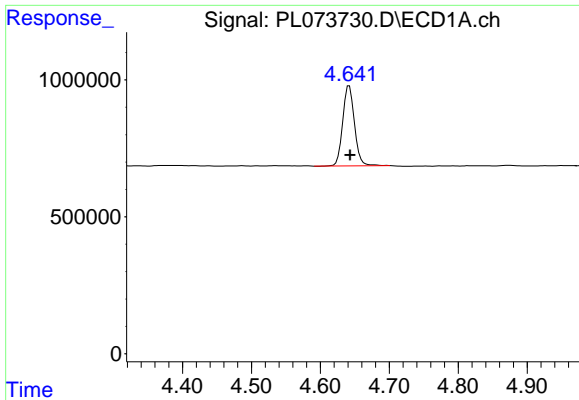
Data Path : Z:\pestpcbsrv\HPCHEM1\ECD_L\Data\PL032922\
 Data File : PL073730.D
 Signal(s) : Signal #1: ECD1A.ch Signal #2: ECD2B.ch
 Acq On : 29 Mar 2022 16:53
 Operator : AR\AJ
 Sample : N2155-02
 Misc :
 ALS Vial : 16 Sample Multiplier: 1

Instrument :
 ECD_L
 ClientSampleId :

Integration File signal 1: autoint1.e
 Integration File signal 2: autoint2.e
 Quant Time: Mar 30 01:06:25 2022
 Quant Method : Z:\pestpcbsrv\HPCHEM1\ECD_L\methods\PL031122.M
 Quant Title : GC Extractables
 QLast Update : Mon Mar 14 04:12:46 2022
 Response via : Initial Calibration
 Integrator: ChemStation

Volume Inj. : 1 µl
 Signal #1 Phase : ZB-MR2 Signal #2 Phase: ZB-MR1
 Signal #1 Info : 30M x 0.32mm x0.2 Signal #2 Info : 30M x 0.32mm x0.5µm

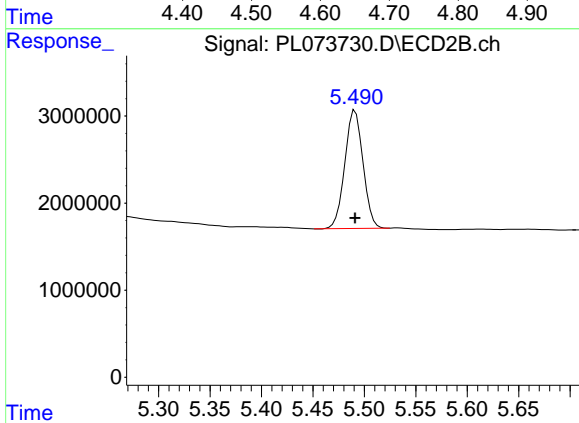




#1 Tetrachloro-m-xylene

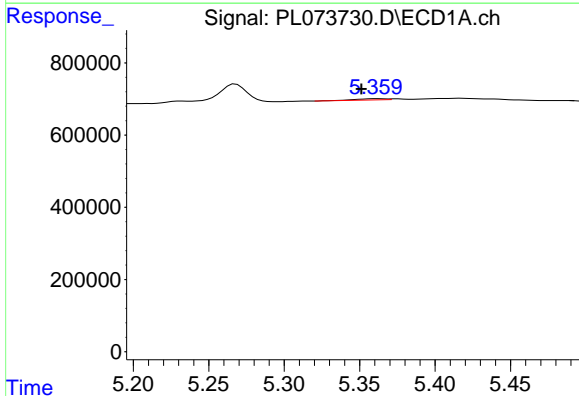
R.T.: 4.642 min
 Delta R.T.: -0.001 min
 Response: 3478022
 Conc: 10.86 ng/ml

Instrument :
 ECD_L
 ClientSampleId :



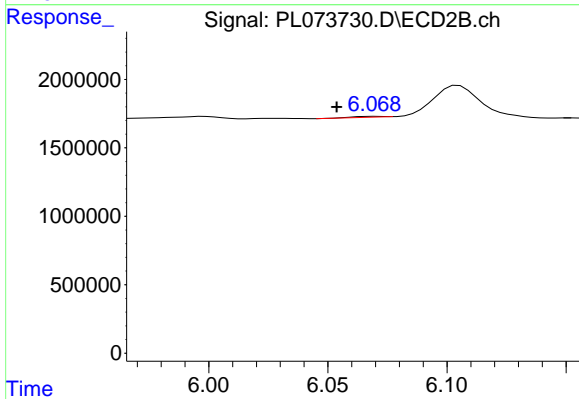
#1 Tetrachloro-m-xylene

R.T.: 5.491 min
 Delta R.T.: 0.000 min
 Response: 16701124
 Conc: 10.18 ng/ml



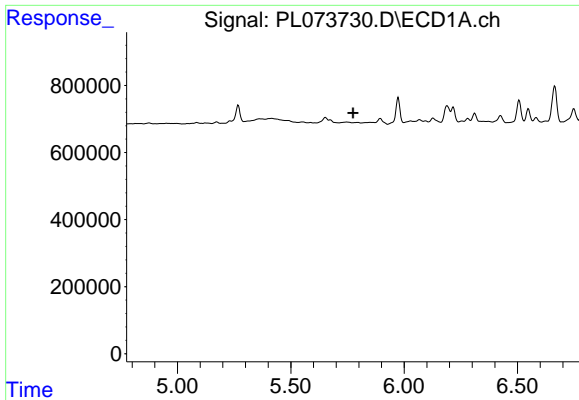
#2 alpha-BHC

R.T.: 5.362 min
 Delta R.T.: 0.011 min
 Response: 51917
 Conc: 0.13 ng/ml



#2 alpha-BHC

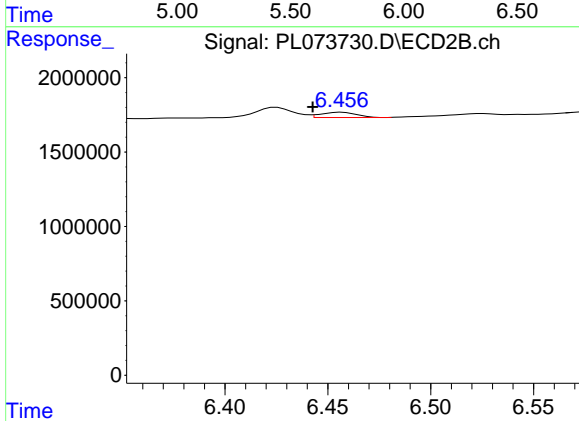
R.T.: 6.070 min
 Delta R.T.: 0.016 min
 Response: 48241
 Conc: 0.02 ng/ml



#3 gamma-BHC (Lindane)

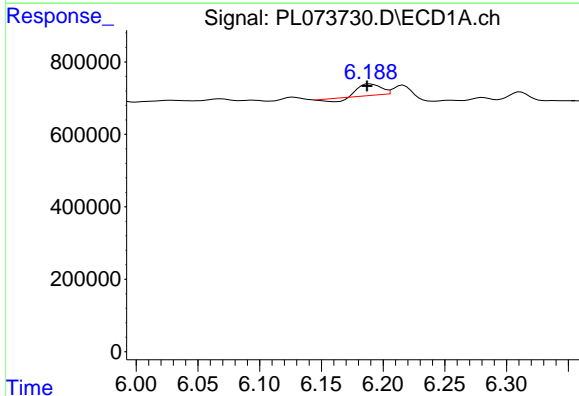
R.T.: 0.000 min
 Exp R.T.: 5.775 min
 Response: 0
 Conc: N.D.

Instrument :
 ECD_L
 ClientSampleId :



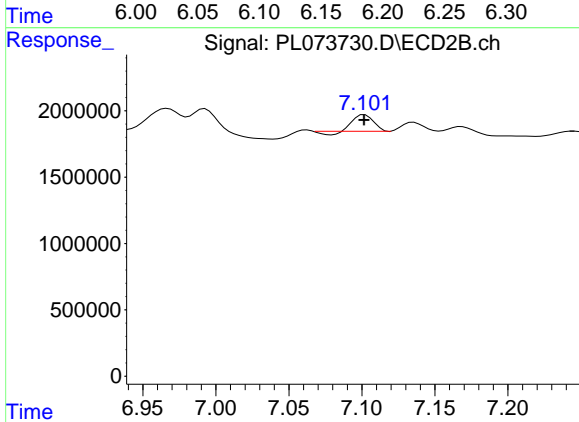
#3 gamma-BHC (Lindane)

R.T.: 6.457 min
 Delta R.T.: 0.014 min
 Response: 420661
 Conc: 0.20 ng/ml



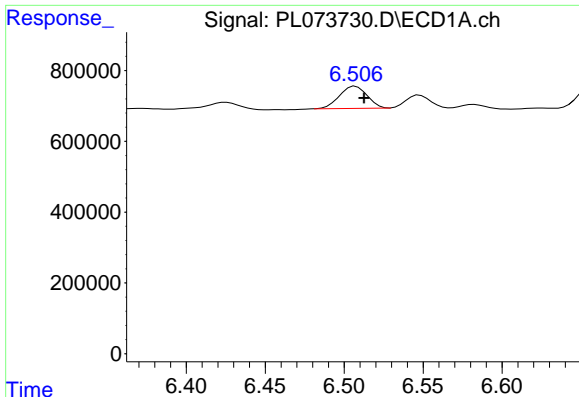
#4 Heptachlor

R.T.: 6.189 min
 Delta R.T.: 0.002 min
 Response: 314727
 Conc: 0.70 ng/ml



#4 Heptachlor

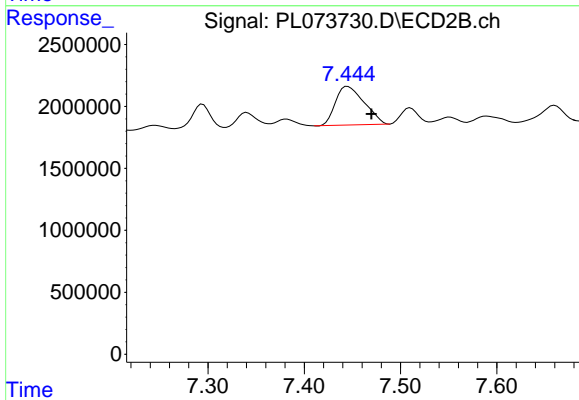
R.T.: 7.102 min
 Delta R.T.: 0.000 min
 Response: 1060508
 Conc: 0.45 ng/ml



#5 Aldrin

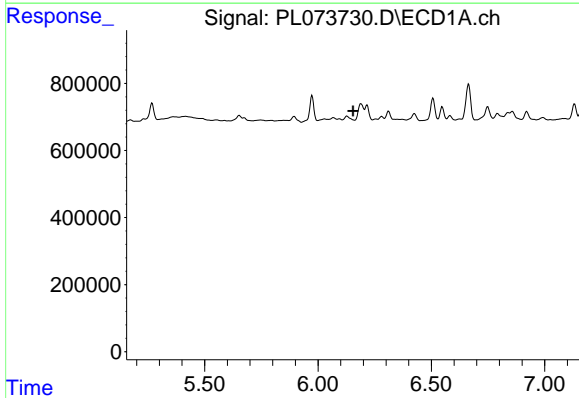
R.T.: 6.507 min
 Delta R.T.: -0.005 min
 Response: 762998
 Conc: 1.85 ng/ml

Instrument :
 ECD_L
 ClientSampleId :



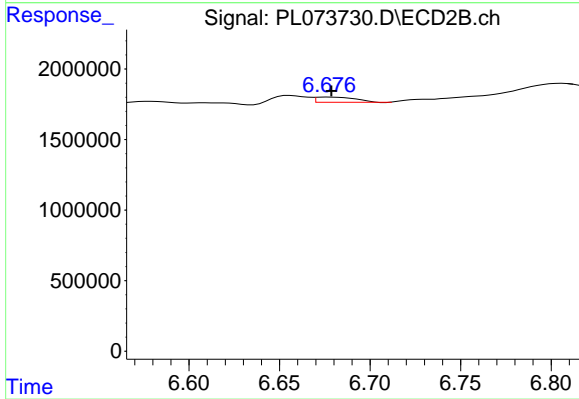
#5 Aldrin

R.T.: 7.445 min
 Delta R.T.: -0.025 min
 Response: 6471884
 Conc: 3.09 ng/ml



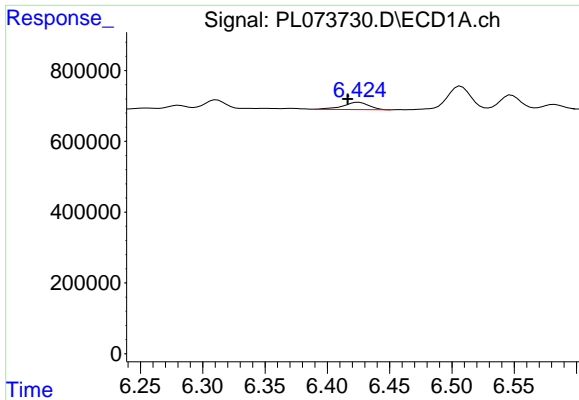
#6 beta-BHC

R.T.: 0.000 min
 Exp R.T. : 6.155 min
 Response: 0
 Conc: N.D.



#6 beta-BHC

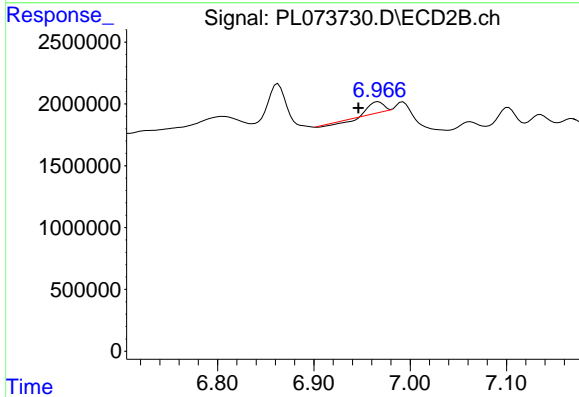
R.T.: 6.677 min
 Delta R.T.: -0.001 min
 Response: 560561
 Conc: 0.54 ng/ml



#7 delta-BHC

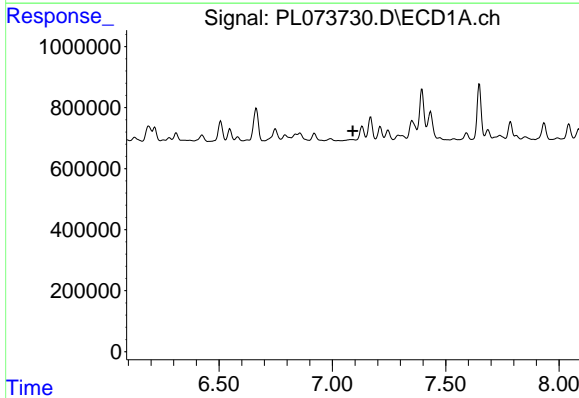
R.T.: 6.425 min
 Delta R.T.: 0.009 min
 Response: 300360
 Conc: 0.75 ng/ml

Instrument :
 ECD_L
 ClientSampleId :



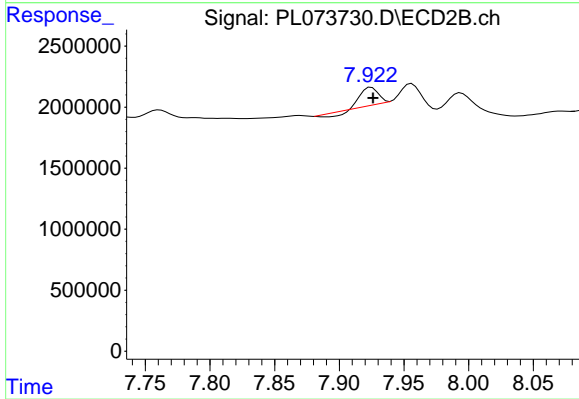
#7 delta-BHC

R.T.: 6.967 min
 Delta R.T.: 0.021 min
 Response: 808555
 Conc: 0.38 ng/ml



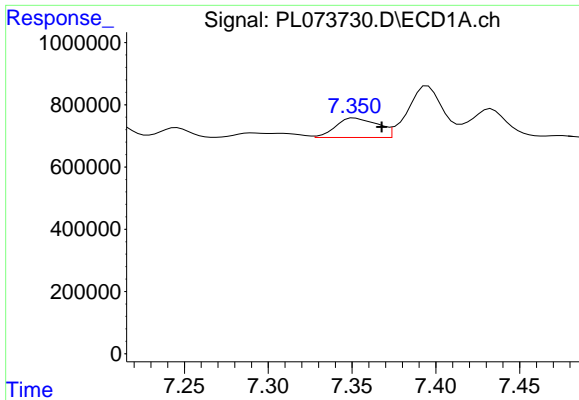
#8 Heptachlor epoxide

R.T.: 0.000 min
 Exp R.T. : 7.090 min
 Response: 0
 Conc: N.D.



#8 Heptachlor epoxide

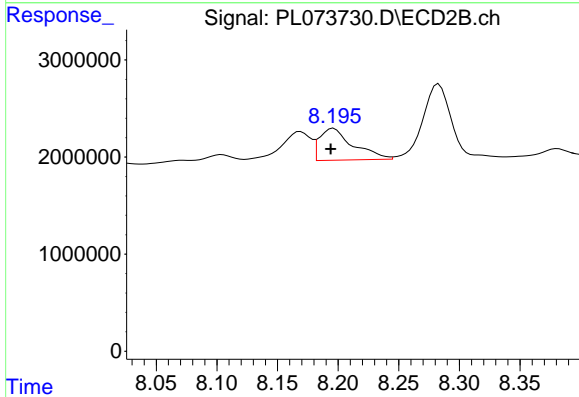
R.T.: 7.925 min
 Delta R.T.: -0.001 min
 Response: 1056527
 Conc: 0.53 ng/ml



#10 gamma-Chlordane

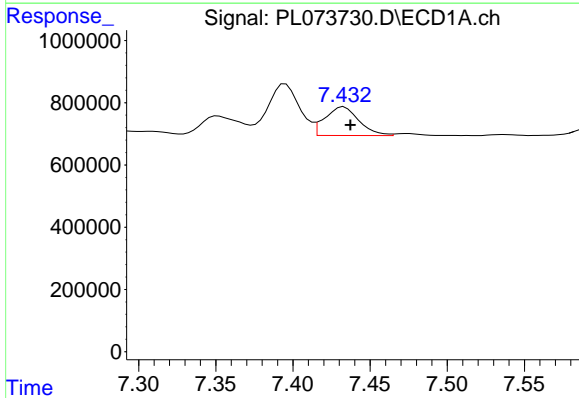
R.T.: 7.351 min
 Delta R.T.: -0.016 min
 Response: 1086163
 Conc: 2.48 ng/ml

Instrument :
 ECD_L
 ClientSampleId :



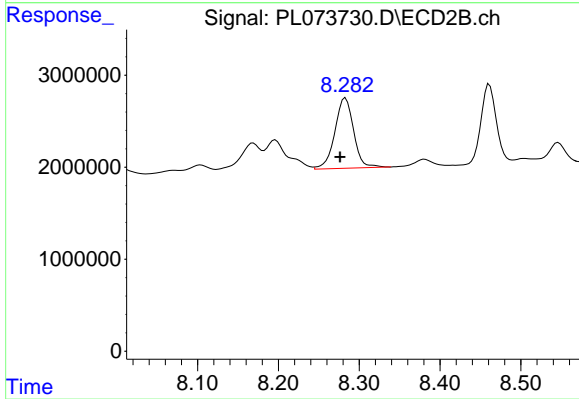
#10 gamma-Chlordane

R.T.: 8.196 min
 Delta R.T.: 0.003 min
 Response: 6327132
 Conc: 3.10 ng/ml



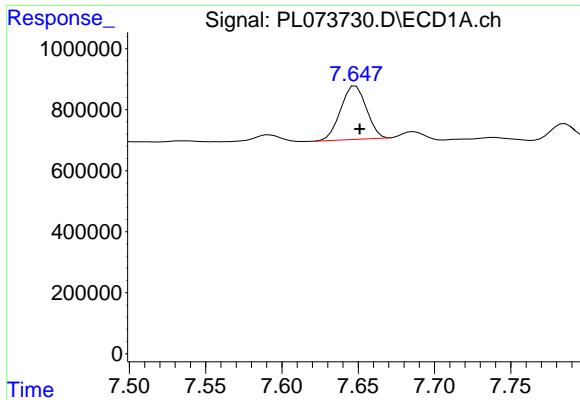
#11 alpha-Chlordane

R.T.: 7.433 min
 Delta R.T.: -0.004 min
 Response: 1411011
 Conc: 3.19 ng/ml



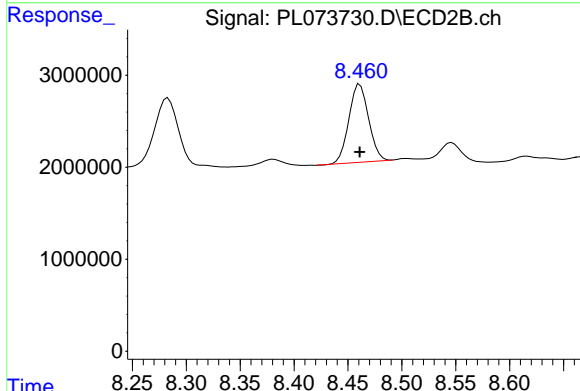
#11 alpha-Chlordane

R.T.: 8.283 min
 Delta R.T.: 0.006 min
 Response: 12310760
 Conc: 6.16 ng/ml

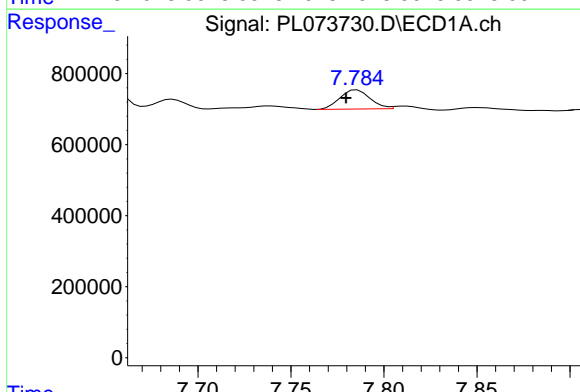


#12 4,4'-DDE
 R.T.: 7.648 min
 Delta R.T.: -0.003 min
 Response: 2057286
 Conc: 5.73 ng/ml

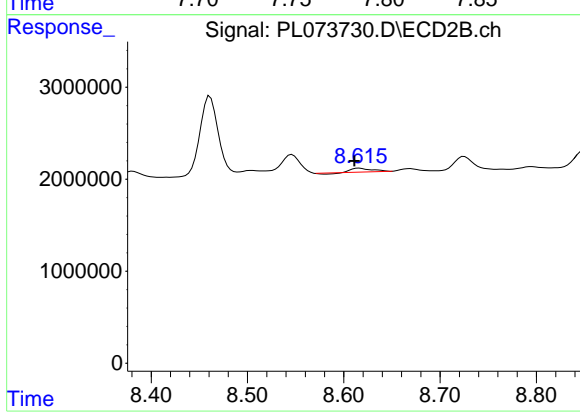
Instrument :
 ECD_L
 ClientSampleId :



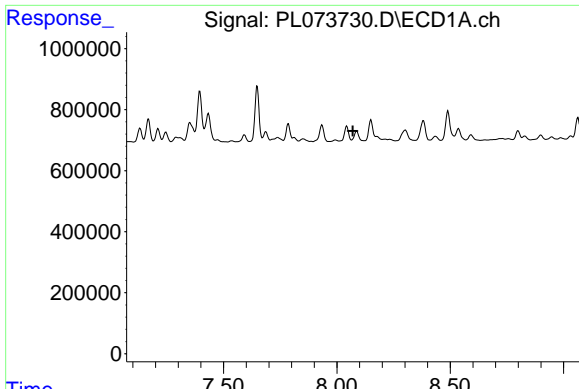
#12 4,4'-DDE
 R.T.: 8.461 min
 Delta R.T.: 0.000 min
 Response: 10822197
 Conc: 6.04 ng/ml



#13 Dieldrin
 R.T.: 7.786 min
 Delta R.T.: 0.006 min
 Response: 613390
 Conc: 1.47 ng/ml



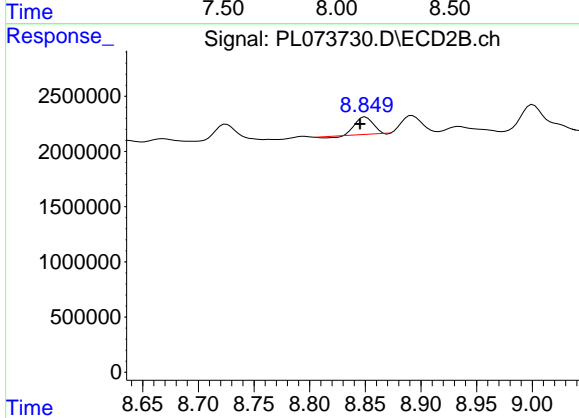
#13 Dieldrin
 R.T.: 8.616 min
 Delta R.T.: 0.005 min
 Response: 567172
 Conc: 0.31 ng/ml



#14 Endrin

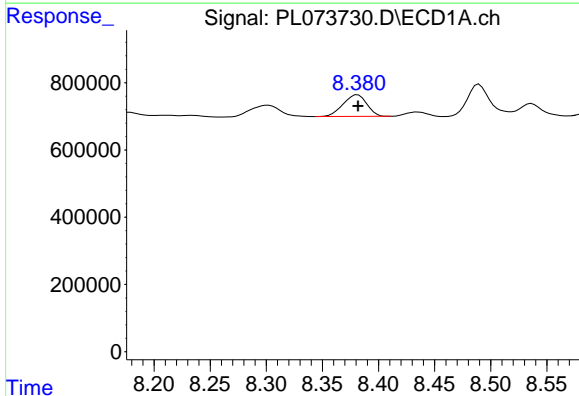
R.T.: 8.087 min
 Delta R.T.: 0.016 min
 Response: -46969
 Conc: N.D.

Instrument :
 ECD_L
 ClientSampleId :



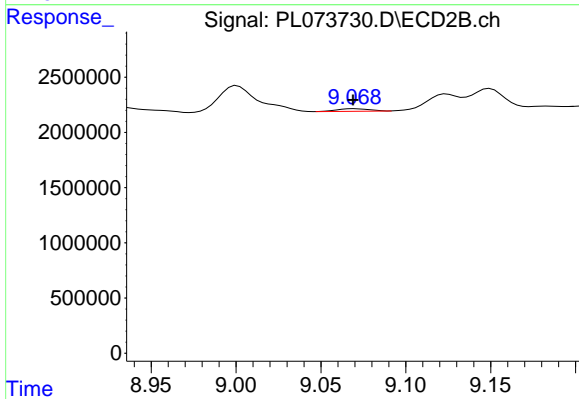
#14 Endrin

R.T.: 8.850 min
 Delta R.T.: 0.005 min
 Response: 1696896
 Conc: 1.10 ng/ml



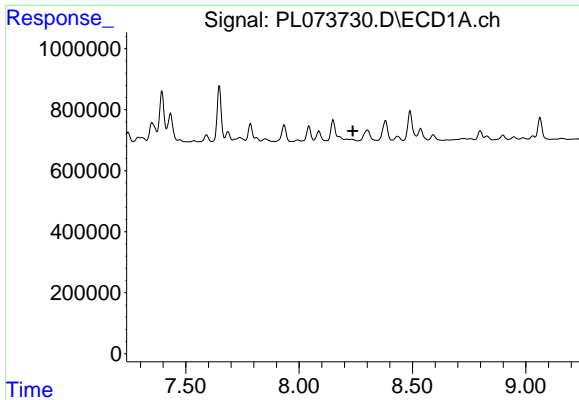
#15 Endosulfan II

R.T.: 8.381 min
 Delta R.T.: 0.000 min
 Response: 948619
 Conc: 2.43 ng/ml



#15 Endosulfan II

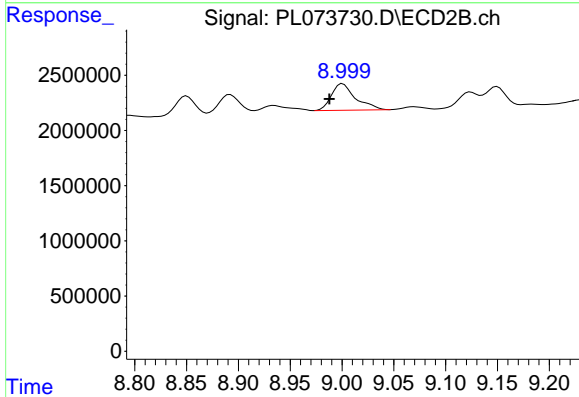
R.T.: 9.070 min
 Delta R.T.: 0.000 min
 Response: 309048
 Conc: 0.20 ng/ml



#16 4,4'-DDD

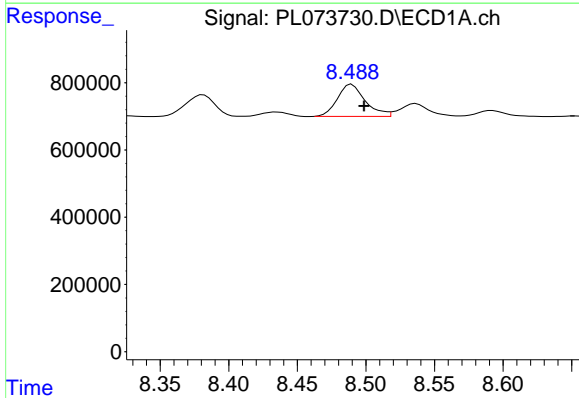
R.T.: 0.000 min
 Exp R.T.: 8.237 min
 Response: 0
 Conc: N.D.

Instrument :
 ECD_L
 ClientSampleId :



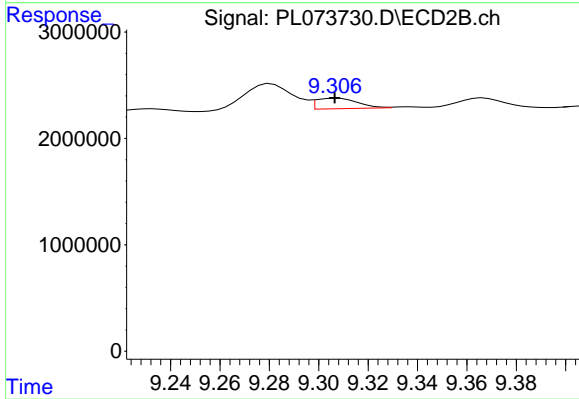
#16 4,4'-DDD

R.T.: 9.001 min
 Delta R.T.: 0.013 min
 Response: 3892748
 Conc: 2.67 ng/ml



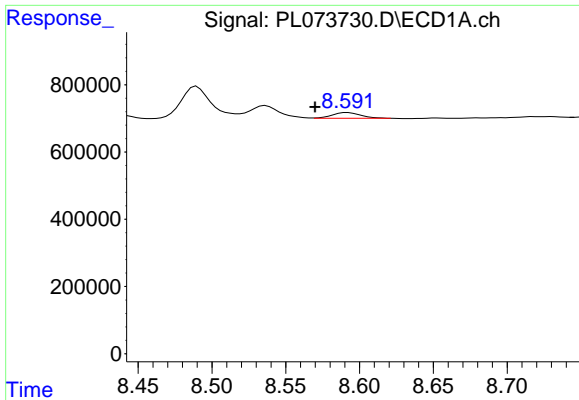
#17 4,4'-DDT

R.T.: 8.490 min
 Delta R.T.: -0.009 min
 Response: 1347715
 Conc: 3.56 ng/ml



#17 4,4'-DDT

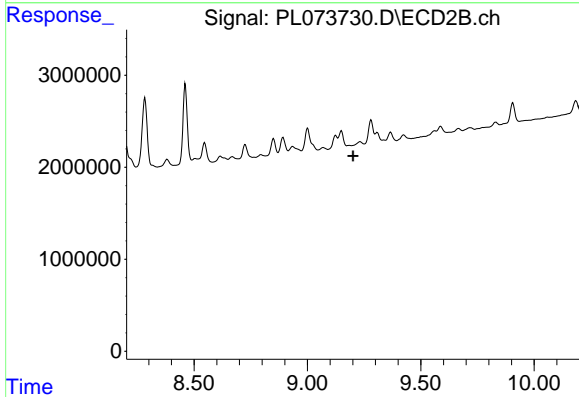
R.T.: 9.308 min
 Delta R.T.: 0.001 min
 Response: 1160070
 Conc: 0.71 ng/ml



#18 Endrin aldehyde

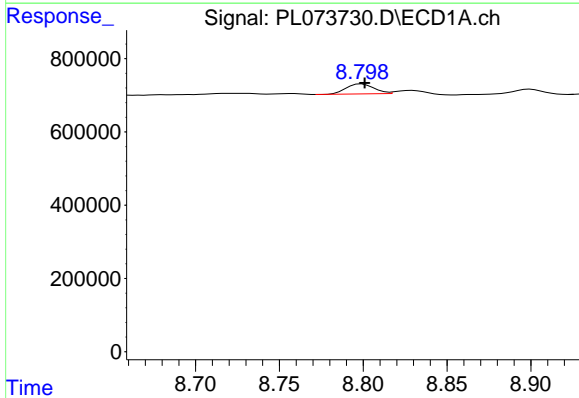
R.T.: 8.592 min
 Delta R.T.: 0.022 min
 Response: 227646
 Conc: 0.72 ng/ml

Instrument :
 ECD_L
 ClientSampleId :



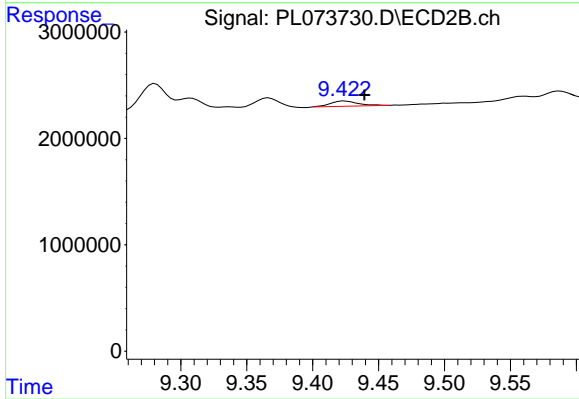
#18 Endrin aldehyde

R.T.: 0.000 min
 Exp R.T. : 9.202 min
 Response: 0
 Conc: N.D.



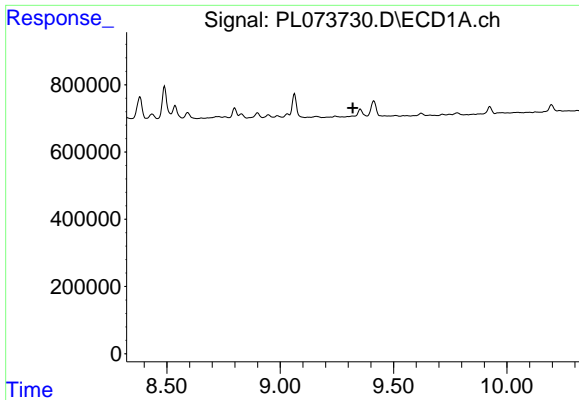
#19 Endosulfan Sulfate

R.T.: 8.799 min
 Delta R.T.: -0.002 min
 Response: 313490
 Conc: 0.74 ng/ml



#19 Endosulfan Sulfate

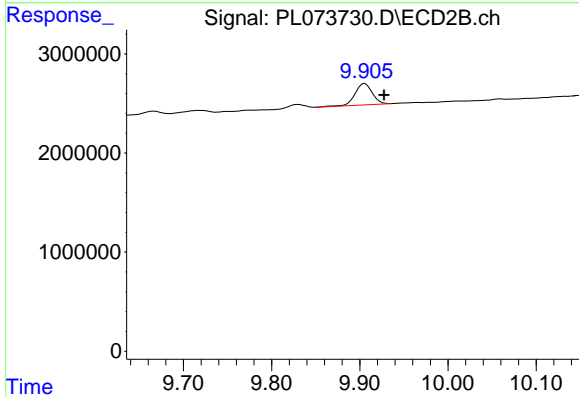
R.T.: 9.424 min
 Delta R.T.: -0.015 min
 Response: 717899
 Conc: 0.46 ng/ml



#21 Endrin ketone

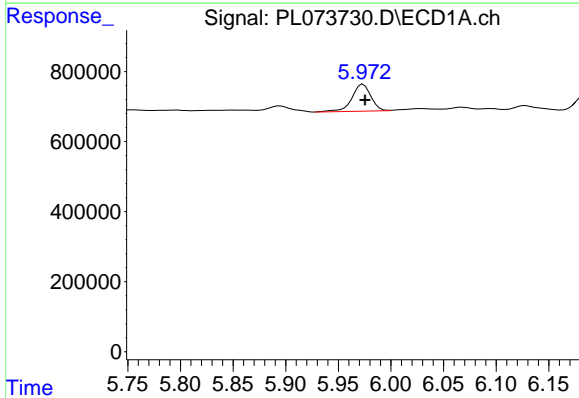
R.T.: 0.000 min
 Exp R.T.: 9.320 min
 Response: 0
 Conc: N.D.

Instrument :
 ECD_L
 ClientSampleId :



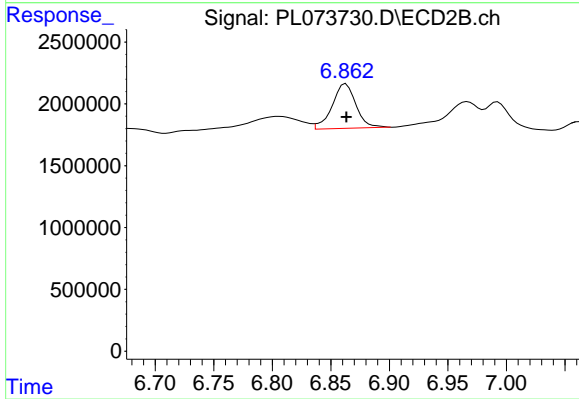
#21 Endrin ketone

R.T.: 9.906 min
 Delta R.T.: -0.022 min
 Response: 2931584
 Conc: 1.78 ng/ml



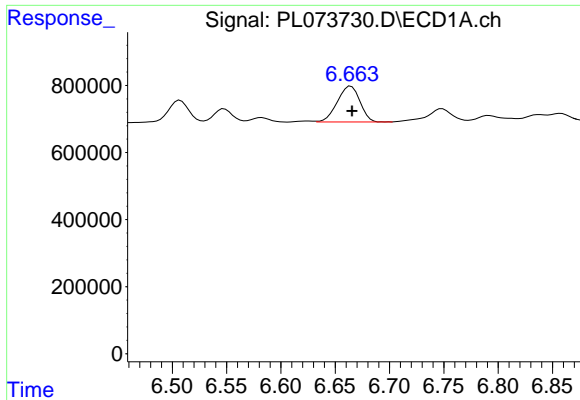
#23 Chlordane-1

R.T.: 5.974 min
 Delta R.T.: -0.002 min
 Response: 957451
 Conc: 80.76 ng/ml



#23 Chlordane-1

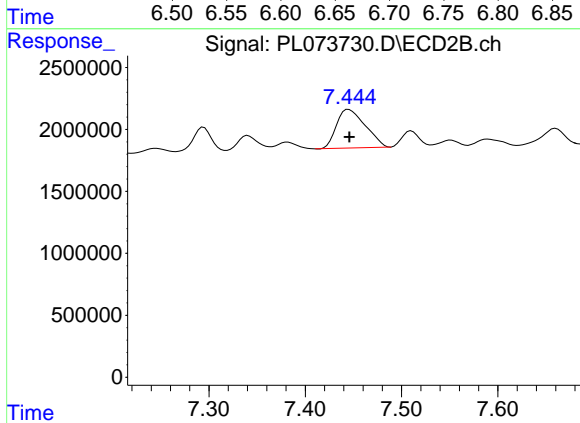
R.T.: 6.863 min
 Delta R.T.: 0.000 min
 Response: 5120957
 Conc: 74.96 ng/ml



#24 Chlordane-2

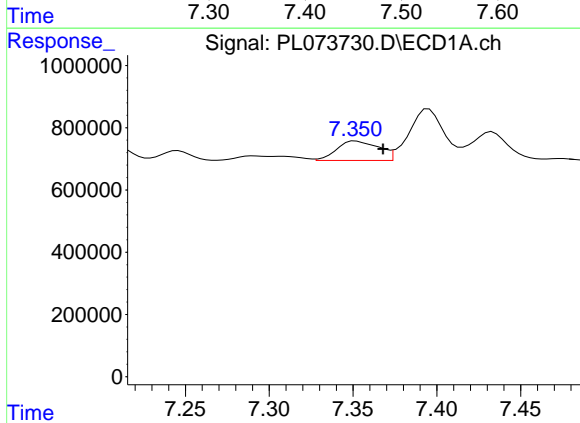
R.T.: 6.664 min
 Delta R.T.: -0.001 min
 Response: 1553952
 Conc: 95.26 ng/ml

Instrument :
 ECD_L
 ClientSampleId :



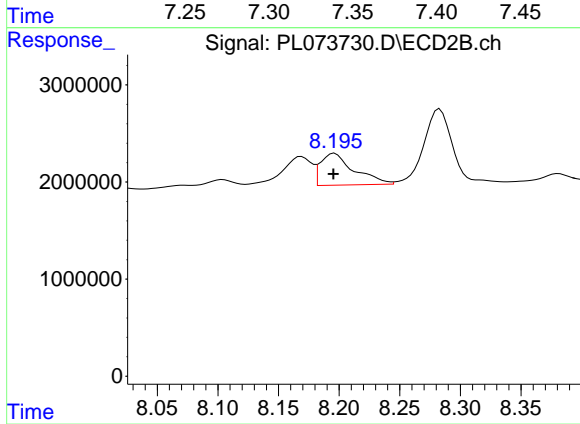
#24 Chlordane-2

R.T.: 7.445 min
 Delta R.T.: 0.000 min
 Response: 6471884
 Conc: 90.05 ng/ml



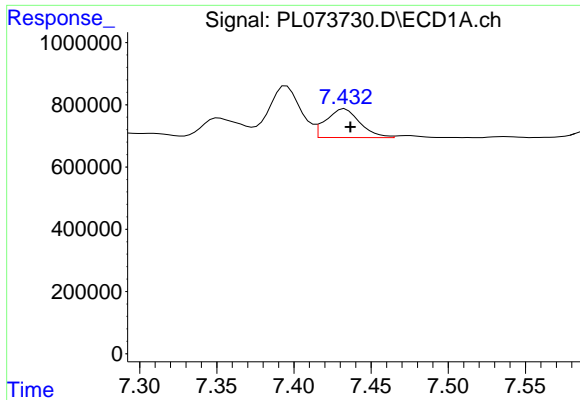
#25 Chlordane-3

R.T.: 7.351 min
 Delta R.T.: -0.016 min
 Response: 1086163
 Conc: 26.60 ng/ml



#25 Chlordane-3

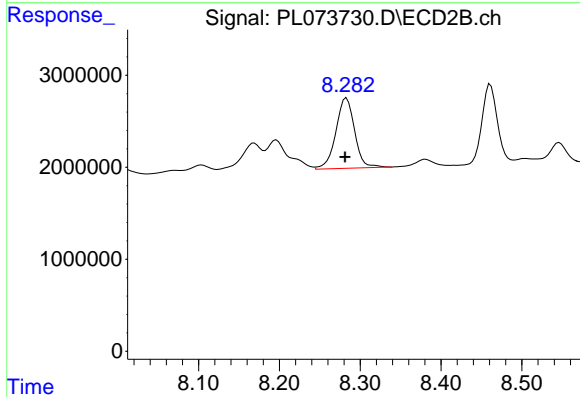
R.T.: 8.196 min
 Delta R.T.: 0.001 min
 Response: 6327132
 Conc: 23.34 ng/ml



#26 Chlordane-4

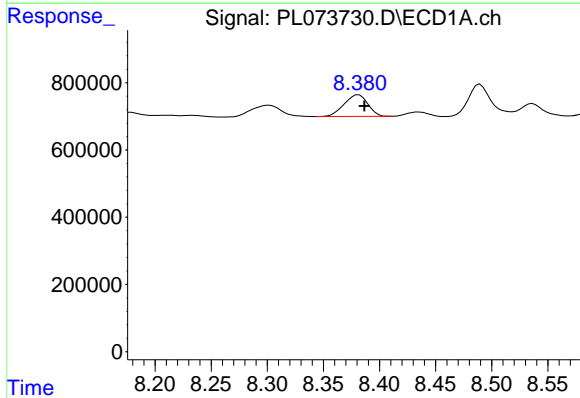
R.T.: 7.433 min
 Delta R.T.: -0.004 min
 Response: 1411011
 Conc: 31.84 ng/ml

Instrument :
 ECD_L
 ClientSampleId :



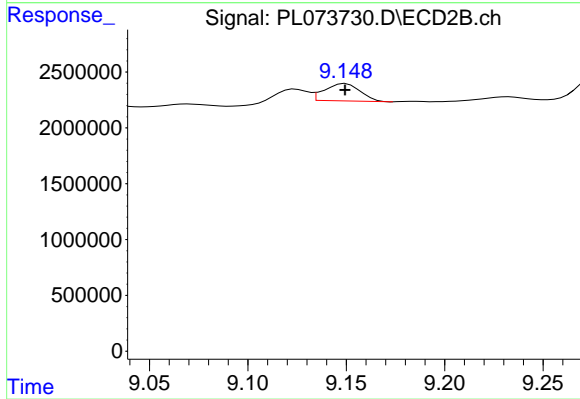
#26 Chlordane-4

R.T.: 8.283 min
 Delta R.T.: 0.002 min
 Response: 12310760
 Conc: 37.16 ng/ml



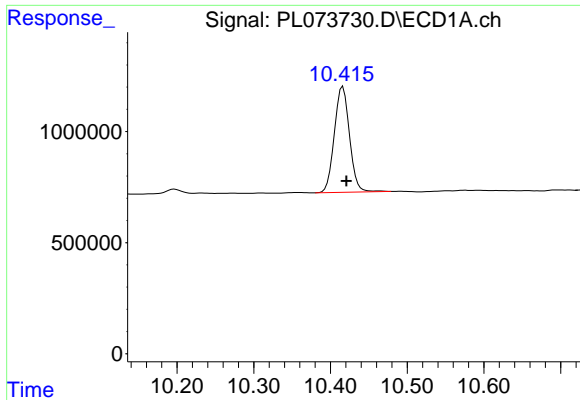
#27 Chlordane-5

R.T.: 8.381 min
 Delta R.T.: -0.005 min
 Response: 948619
 Conc: 57.93 ng/ml



#27 Chlordane-5

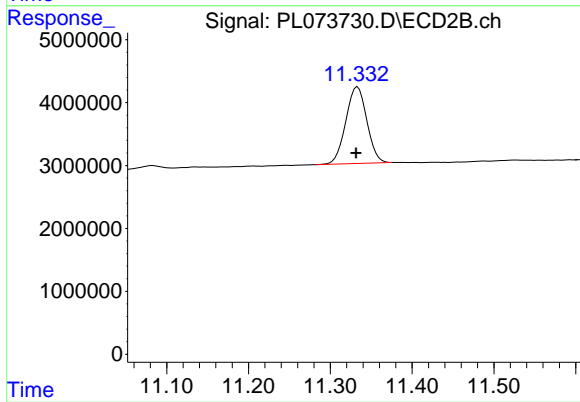
R.T.: 9.150 min
 Delta R.T.: 0.000 min
 Response: 1950731
 Conc: 35.94 ng/ml



#28 Decachlorobiphenyl

R.T.: 10.416 min
Delta R.T.: -0.005 min
Response: 6540416
Conc: 12.86 ng/ml

Instrument :
ECD_L
ClientSampleId :



#28 Decachlorobiphenyl

R.T.: 11.333 min
Delta R.T.: 0.002 min
Response: 21739072
Conc: 12.16 ng/ml