

Data Path : Z:\pestpcbsrv\HPCHEM1\ECD_L\Data\PL040723\
 Data File : PL081922.D
 Signal(s) : Signal #1: ECD1A.ch Signal #2: ECD2B.ch
 Acq On : 08 Apr 2023 06:58
 Operator : AR\AJ
 Sample : PSTDCCC050
 Misc :
 ALS Vial : 4 Sample Multiplier: 1

Instrument :
 ECD_L
 ClientSampleId :

Integration File signal 1: autoint1.e
 Integration File signal 2: autoint2.e
 Quant Time: Apr 08 12:39:57 2023
 Quant Method : Z:\pestpcbsrv\HPCHEM1\ECD_L\methods\PL032223.M
 Quant Title : GC Extractables
 QLast Update : Thu Mar 23 01:07:33 2023
 Response via : Initial Calibration
 Integrator: ChemStation

Volume Inj. : 1 µl
 Signal #1 Phase : ZB-MR2 Signal #2 Phase: ZB-MR1
 Signal #1 Info : 30M x 0.32mm x0.2 Signal #2 Info : 30M x 0.32mm x0.5µm

	Compound	RT#1	RT#2	Resp#1	Resp#2	ng/ml	ng/ml

System Monitoring Compounds							
1)	SA Tetrachlo...	3.328	2.655	114.1E6	97303172	49.065	48.745
28)	SA Decachlor...	8.747	7.770	84354608	96747552	47.135	48.782
Target Compounds							
2)	A alpha-BHC	3.777	3.153	172.4E6	141.5E6	50.272	48.551
3)	MA gamma-BHC...	4.105	3.481	156.7E6	133.8E6	49.339	48.063
4)	MA Heptachlor	4.684	3.813	136.3E6	134.9E6	43.252	47.068
5)	MB Aldrin	5.020	4.091	141.2E6	132.7E6	49.352	49.819
6)	B beta-BHC	4.308	3.780	70485482	58887360	46.832	49.444
7)	B delta-BHC	4.549	4.007	155.5E6	131.0E6	51.158	50.639
8)	B Heptachlo...	5.446	4.592	130.9E6	122.9E6	48.134	50.582
9)	A Endosulfan I	5.827	4.959	117.5E6	110.7E6	47.551	50.121
10)	B gamma-Chl...	5.702	4.841	128.4E6	123.8E6	48.903	50.919
11)	B alpha-Chl...	5.779	4.904	125.9E6	123.1E6	48.649	50.695
12)	B 4,4'-DDE	5.957	5.095	111.0E6	106.2E6	49.258	53.925
13)	MA Dieldrin	6.102	5.224	118.9E6	115.3E6	49.133	51.252
14)	MA Endrin	6.329	5.498	94180210	95887230	44.525	47.382
15)	B Endosulfa...	6.551	5.794	99033171	88229493	46.668	48.637
16)	A 4,4'-DDD	6.473	5.649	96863784	90533830	53.709	59.659
17)	MA 4,4'-DDT	6.783	5.898	83086177	78059501	40.937	45.297
18)	B Endrin al...	6.680	5.974	79875810	78933021	48.821	50.827
19)	B Endosulfa...	6.914	6.197	101.4E6	95343731	48.674	49.002
20)	A Methoxychlor	7.264	6.477	44069146	44592689	40.922	44.770
21)	B Endrin ke...	7.394	6.702	108.4E6	114.4E6	51.749	53.511
22)	Mirex	7.858	6.874	77574772	94017006	45.279	48.974
24)	Chlordane-2	5.020f	4.209	141.2E6	1619001	1356.324	17.331 #
25)	Chlordane-3	5.702	4.841	128.4E6	123.8E6	324.104	491.332 #
26)	Chlordane-4	5.779	4.904	125.9E6	123.1E6	263.128	470.106 #
27)	Chlordane-5	0.000	5.570	0	161605	N.D.	2.421 #

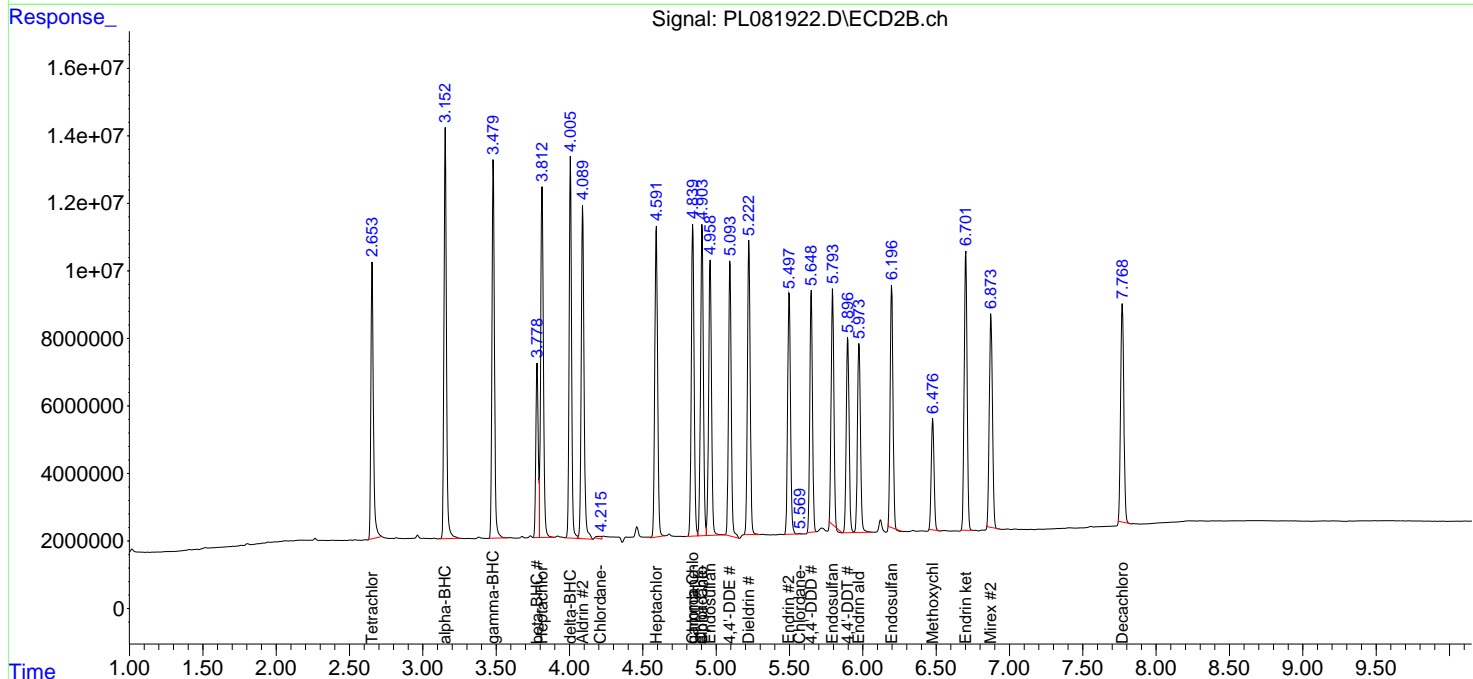
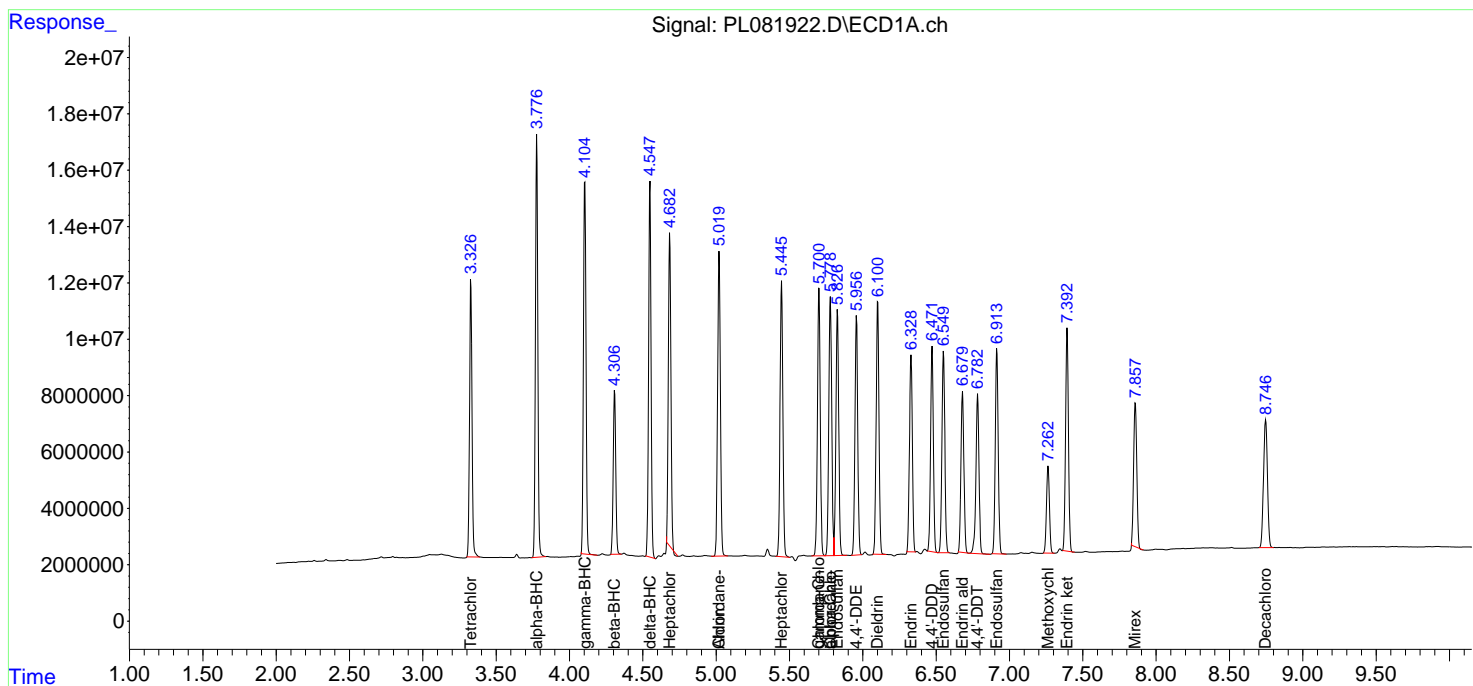
(f)=RT Delta > 1/2 Window (#)=Amounts differ by > 25% (m)=manual int.

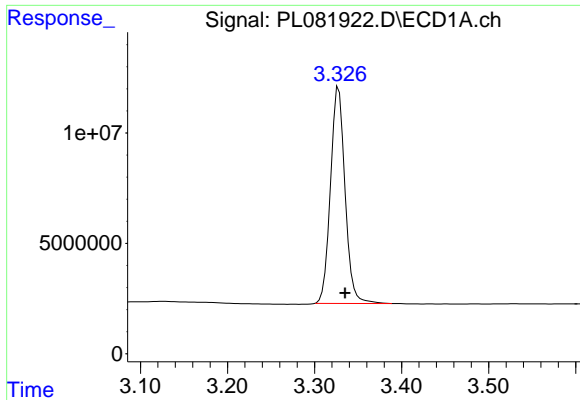
Data Path : Z:\pestpcbsrv\HPCHEM1\ECD_L\Data\PL040723\
 Data File : PL081922.D
 Signal(s) : Signal #1: ECD1A.ch Signal #2: ECD2B.ch
 Acq On : 08 Apr 2023 06:58
 Operator : AR\AJ
 Sample : PSTDCCC050
 Misc :
 ALS Vial : 4 Sample Multiplier: 1

Instrument :
 ECD_L
 ClientSampleId :

Integration File signal 1: autoint1.e
 Integration File signal 2: autoint2.e
 Quant Time: Apr 08 12:39:57 2023
 Quant Method : Z:\pestpcbsrv\HPCHEM1\ECD_L\methods\PL032223.M
 Quant Title : GC Extractables
 QLast Update : Thu Mar 23 01:07:33 2023
 Response via : Initial Calibration
 Integrator: ChemStation

Volume Inj. : 1 µl
 Signal #1 Phase : ZB-MR2 Signal #2 Phase: ZB-MR1
 Signal #1 Info : 30M x 0.32mm x0.2 Signal #2 Info : 30M x 0.32mm x0.5µm

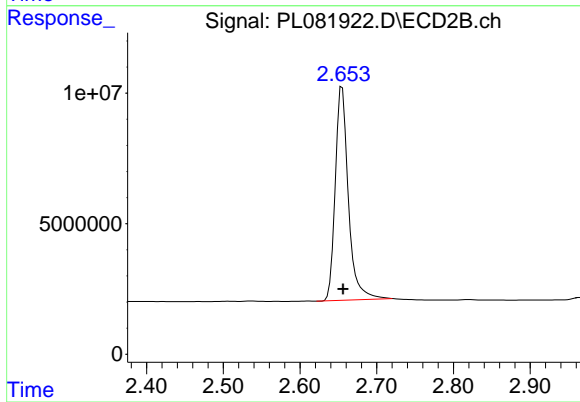




#1 Tetrachloro-m-xylene

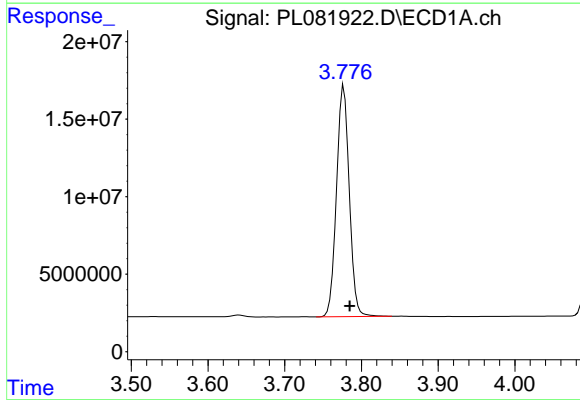
R.T.: 3.328 min
 Delta R.T.: -0.007 min
 Response: 114118767
 Conc: 49.06 ng/ml

Instrument :
 ECD_L
 ClientSampleId :



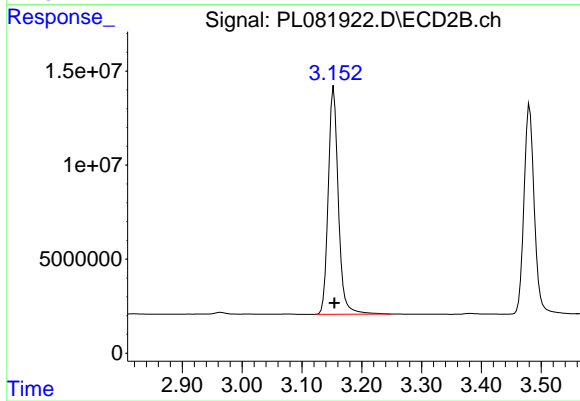
#1 Tetrachloro-m-xylene

R.T.: 2.655 min
 Delta R.T.: -0.001 min
 Response: 97303172
 Conc: 48.75 ng/ml



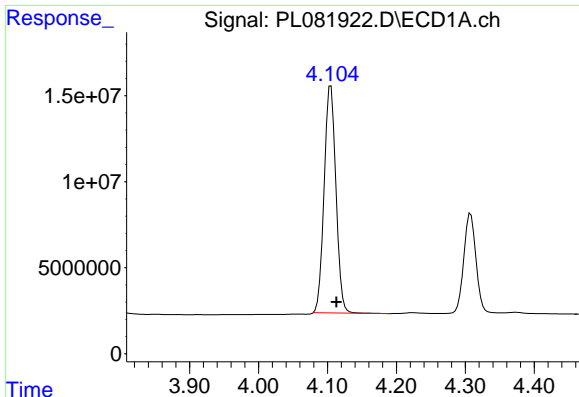
#2 alpha-BHC

R.T.: 3.777 min
 Delta R.T.: -0.008 min
 Response: 172353128
 Conc: 50.27 ng/ml



#2 alpha-BHC

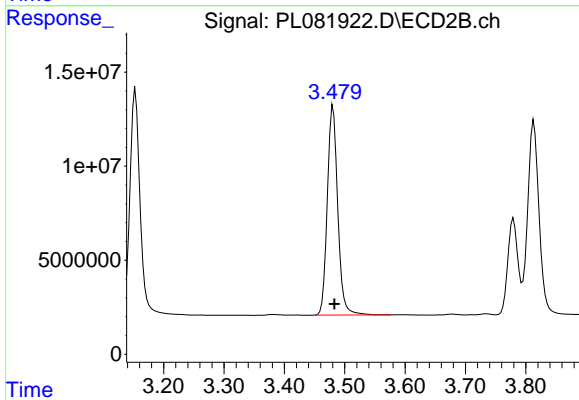
R.T.: 3.153 min
 Delta R.T.: -0.001 min
 Response: 141526310
 Conc: 48.55 ng/ml



#3 gamma-BHC (Lindane)

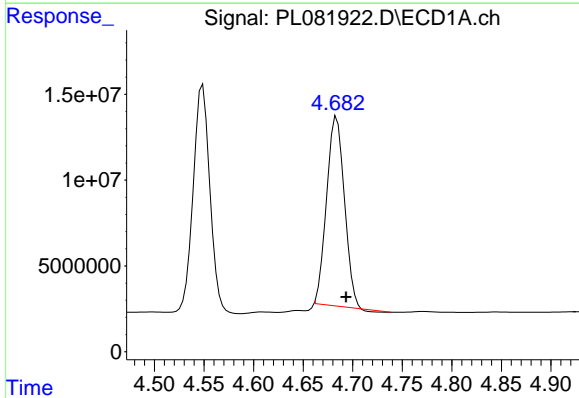
R.T.: 4.105 min
 Delta R.T.: -0.008 min
 Response: 156740329
 Conc: 49.34 ng/ml

Instrument :
 ECD_L
 ClientSampleId :



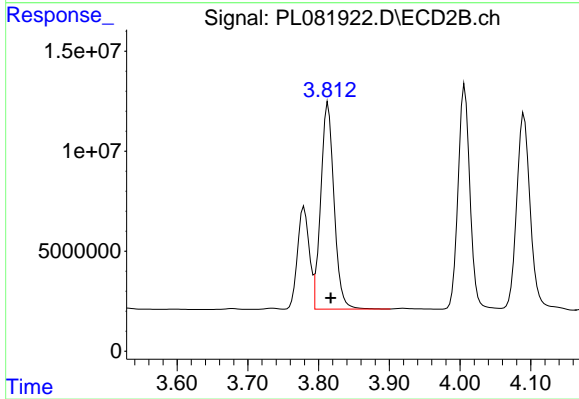
#3 gamma-BHC (Lindane)

R.T.: 3.481 min
 Delta R.T.: -0.002 min
 Response: 133817814
 Conc: 48.06 ng/ml



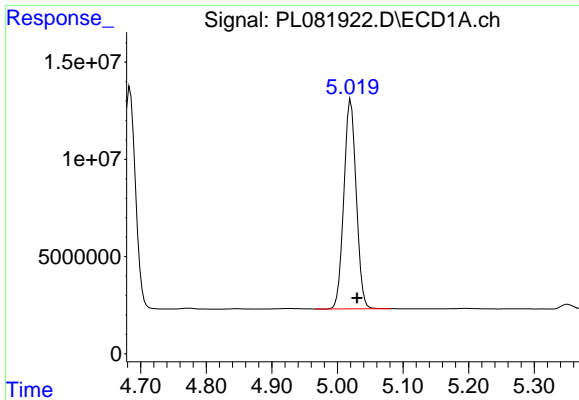
#4 Heptachlor

R.T.: 4.684 min
 Delta R.T.: -0.009 min
 Response: 136338877
 Conc: 43.25 ng/ml



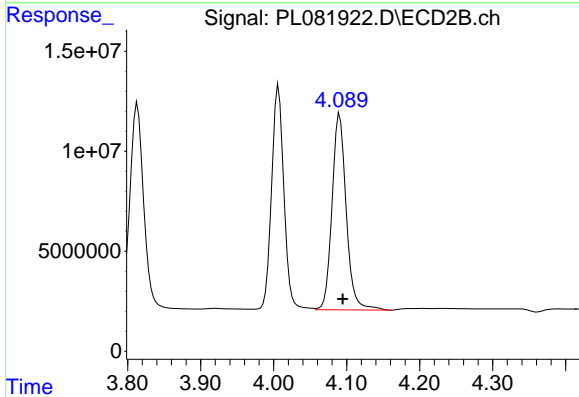
#4 Heptachlor

R.T.: 3.813 min
 Delta R.T.: -0.004 min
 Response: 134943564
 Conc: 47.07 ng/ml

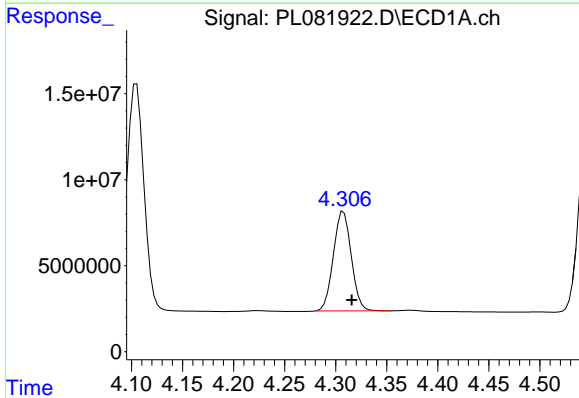


#5 Aldrin
 R.T.: 5.020 min
 Delta R.T.: -0.009 min
 Response: 141160785
 Conc: 49.35 ng/ml

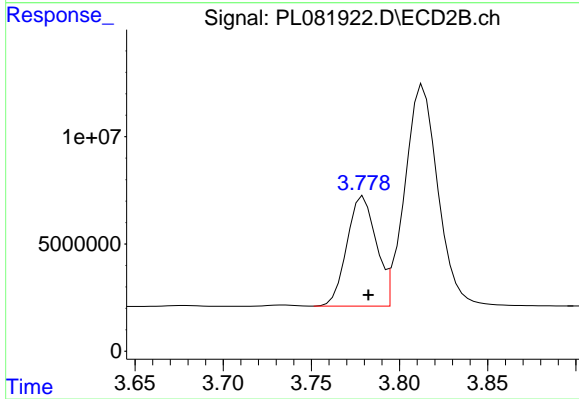
Instrument :
 ECD_L
 ClientSampleId :



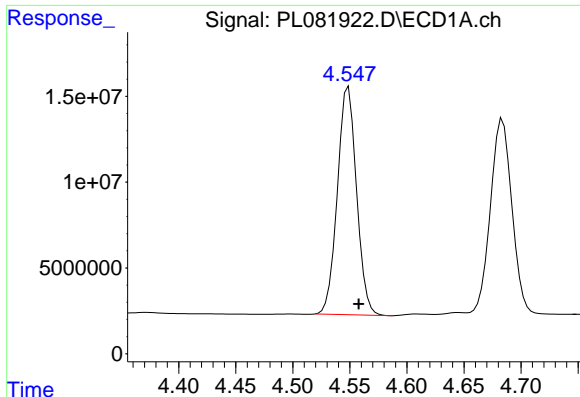
#5 Aldrin
 R.T.: 4.091 min
 Delta R.T.: -0.004 min
 Response: 132740986
 Conc: 49.82 ng/ml



#6 beta-BHC
 R.T.: 4.308 min
 Delta R.T.: -0.008 min
 Response: 70485482
 Conc: 46.83 ng/ml



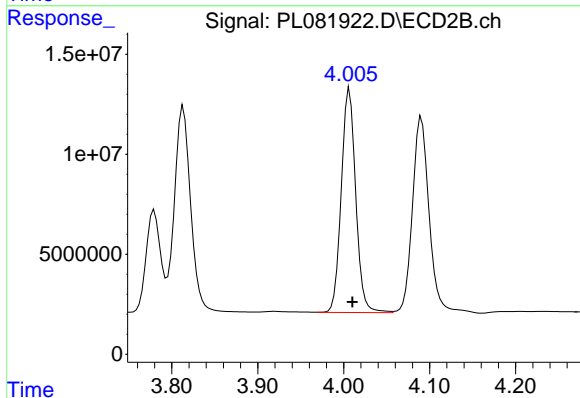
#6 beta-BHC
 R.T.: 3.780 min
 Delta R.T.: -0.003 min
 Response: 58887360
 Conc: 49.44 ng/ml



#7 delta-BHC

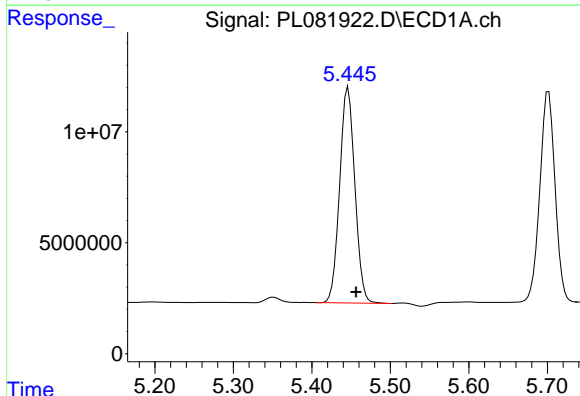
R.T.: 4.549 min
Delta R.T.: -0.009 min
Response: 155478799
Conc: 51.16 ng/ml

Instrument :
ECD_L
ClientSampleId :



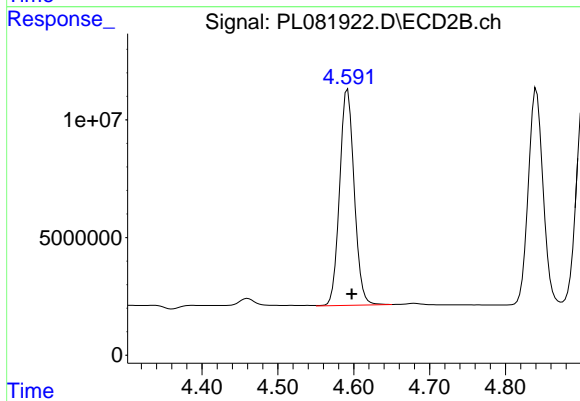
#7 delta-BHC

R.T.: 4.007 min
Delta R.T.: -0.003 min
Response: 130957571
Conc: 50.64 ng/ml



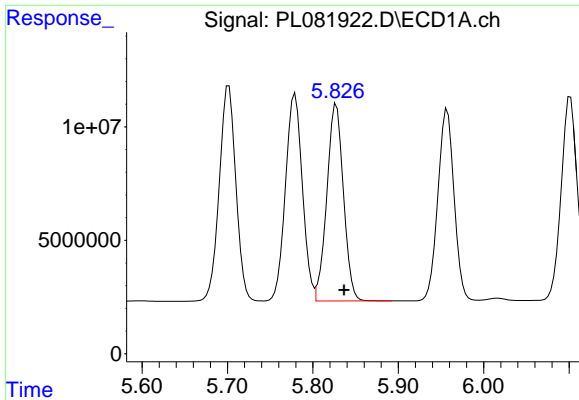
#8 Heptachlor epoxide

R.T.: 5.446 min
Delta R.T.: -0.010 min
Response: 130927391
Conc: 48.13 ng/ml



#8 Heptachlor epoxide

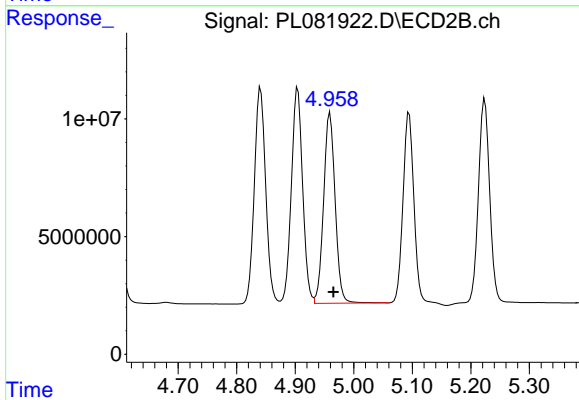
R.T.: 4.592 min
Delta R.T.: -0.006 min
Response: 122850810
Conc: 50.58 ng/ml



#9 Endosulfan I

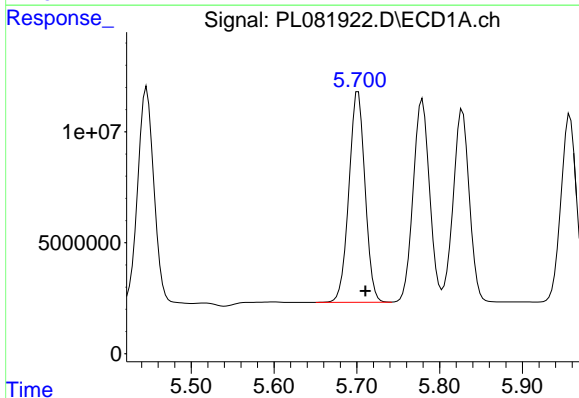
R.T.: 5.827 min
Delta R.T.: -0.009 min
Response: 117489865
Conc: 47.55 ng/ml

Instrument :
ECD_L
ClientSampleId :



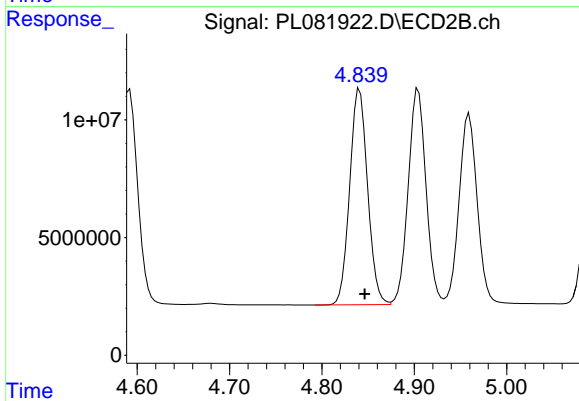
#9 Endosulfan I

R.T.: 4.959 min
Delta R.T.: -0.006 min
Response: 110652521
Conc: 50.12 ng/ml



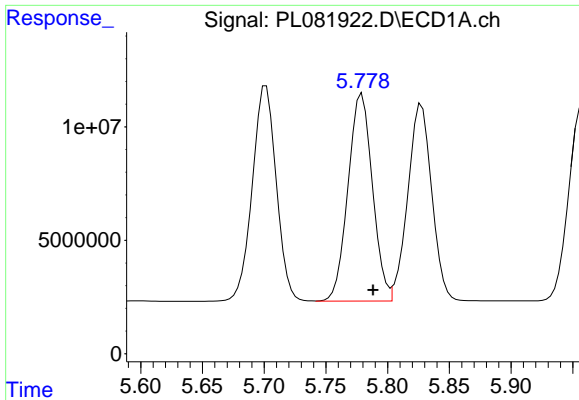
#10 gamma-Chlordane

R.T.: 5.702 min
Delta R.T.: -0.009 min
Response: 128381625
Conc: 48.90 ng/ml



#10 gamma-Chlordane

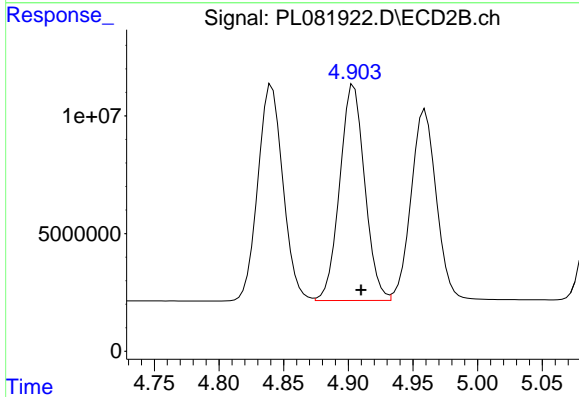
R.T.: 4.841 min
Delta R.T.: -0.005 min
Response: 123752340
Conc: 50.92 ng/ml



#11 alpha-Chlordane

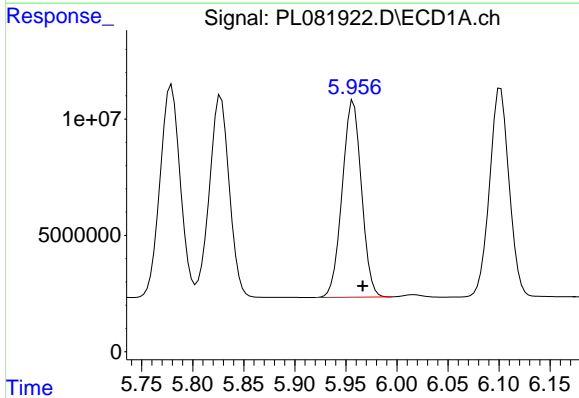
R.T.: 5.779 min
 Delta R.T.: -0.009 min
 Response: 125922431
 Conc: 48.65 ng/ml

Instrument :
 ECD_L
 ClientSampleId :



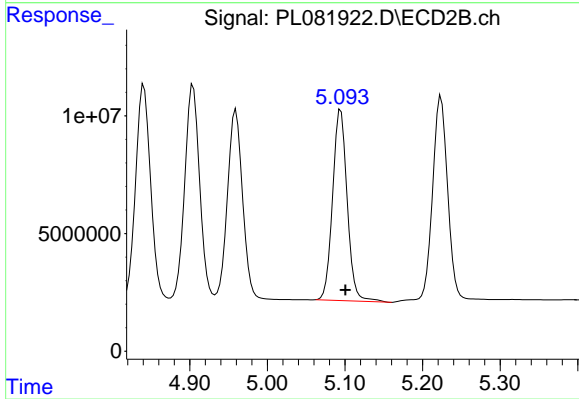
#11 alpha-Chlordane

R.T.: 4.904 min
 Delta R.T.: -0.006 min
 Response: 123136127
 Conc: 50.70 ng/ml



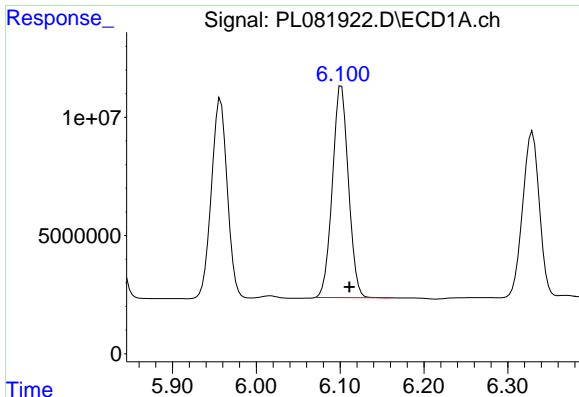
#12 4,4'-DDE

R.T.: 5.957 min
 Delta R.T.: -0.009 min
 Response: 111010297
 Conc: 49.26 ng/ml



#12 4,4'-DDE

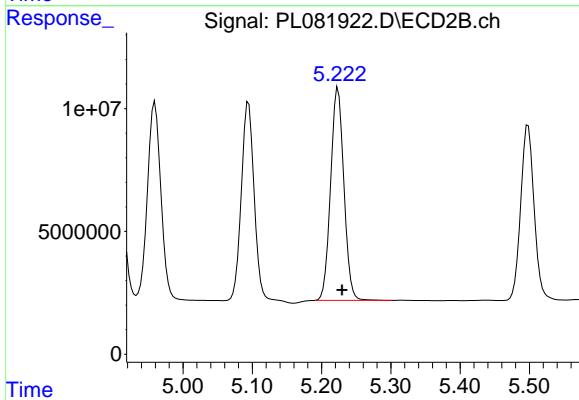
R.T.: 5.095 min
 Delta R.T.: -0.006 min
 Response: 106220542
 Conc: 53.92 ng/ml



#13 Dieldrin

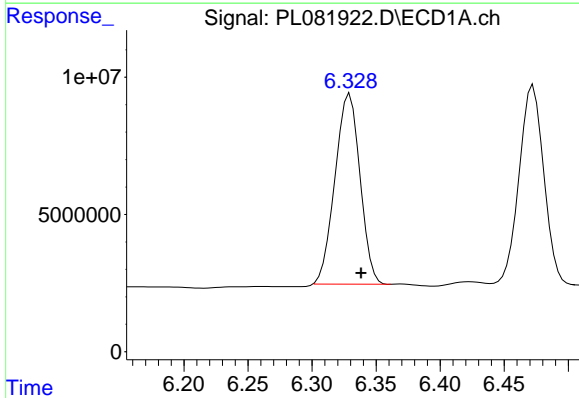
R.T.: 6.102 min
 Delta R.T.: -0.010 min
 Response: 118947277
 Conc: 49.13 ng/ml

Instrument :
 ECD_L
 ClientSampleId :



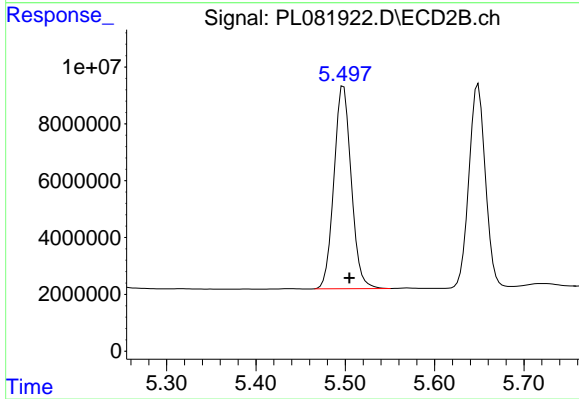
#13 Dieldrin

R.T.: 5.224 min
 Delta R.T.: -0.006 min
 Response: 115287845
 Conc: 51.25 ng/ml



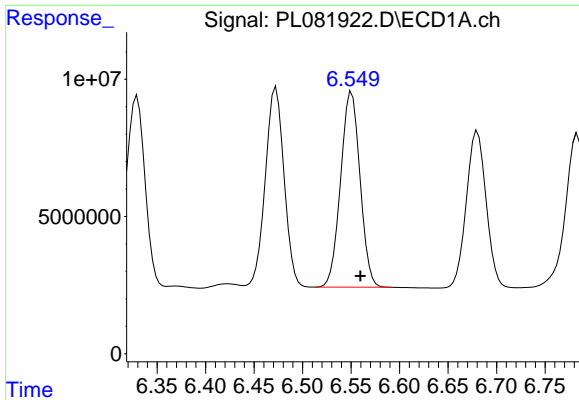
#14 Endrin

R.T.: 6.329 min
 Delta R.T.: -0.009 min
 Response: 94180210
 Conc: 44.52 ng/ml



#14 Endrin

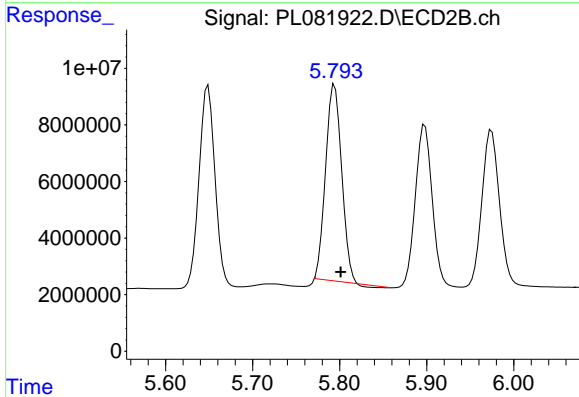
R.T.: 5.498 min
 Delta R.T.: -0.006 min
 Response: 95887230
 Conc: 47.38 ng/ml



#15 Endosulfan II

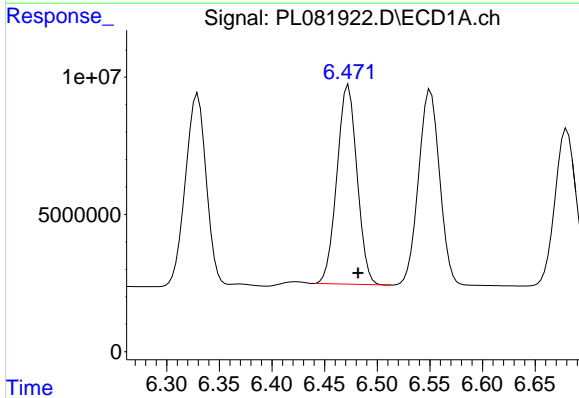
R.T.: 6.551 min
 Delta R.T.: -0.009 min
 Response: 99033171
 Conc: 46.67 ng/ml

Instrument :
 ECD_L
 ClientSampleId :



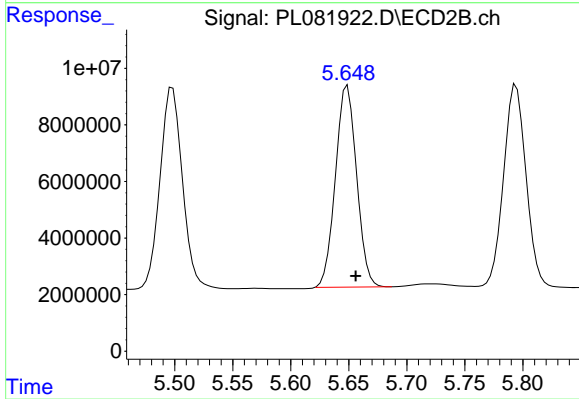
#15 Endosulfan II

R.T.: 5.794 min
 Delta R.T.: -0.007 min
 Response: 88229493
 Conc: 48.64 ng/ml



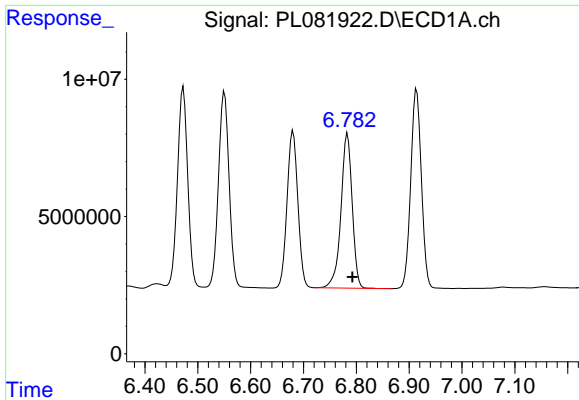
#16 4,4'-DDD

R.T.: 6.473 min
 Delta R.T.: -0.009 min
 Response: 96863784
 Conc: 53.71 ng/ml



#16 4,4'-DDD

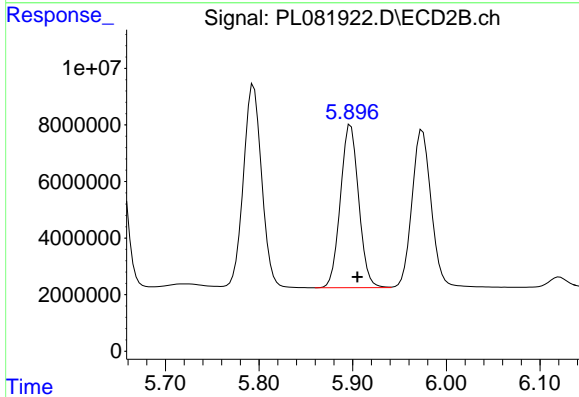
R.T.: 5.649 min
 Delta R.T.: -0.007 min
 Response: 90533830
 Conc: 59.66 ng/ml



#17 4,4'-DDT

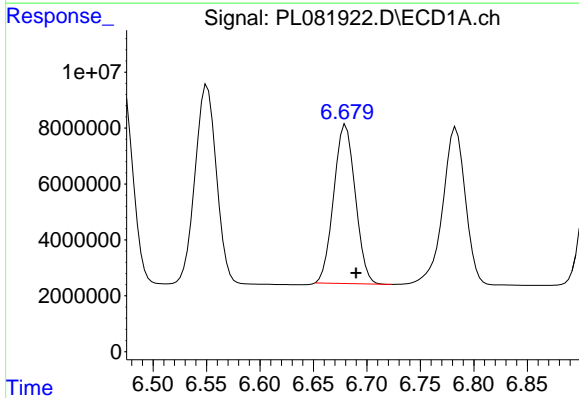
R.T.: 6.783 min
 Delta R.T.: -0.010 min
 Response: 83086177
 Conc: 40.94 ng/ml

Instrument :
 ECD_L
 ClientSampleId :



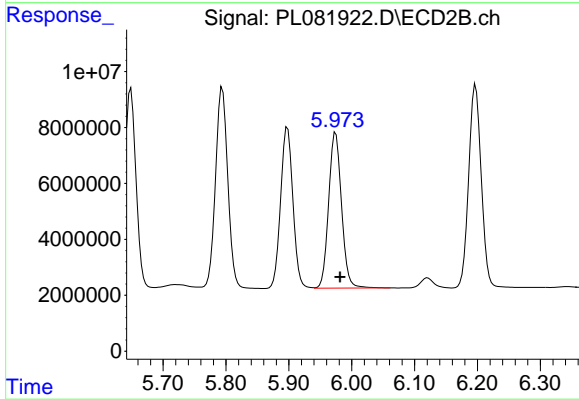
#17 4,4'-DDT

R.T.: 5.898 min
 Delta R.T.: -0.007 min
 Response: 78059501
 Conc: 45.30 ng/ml



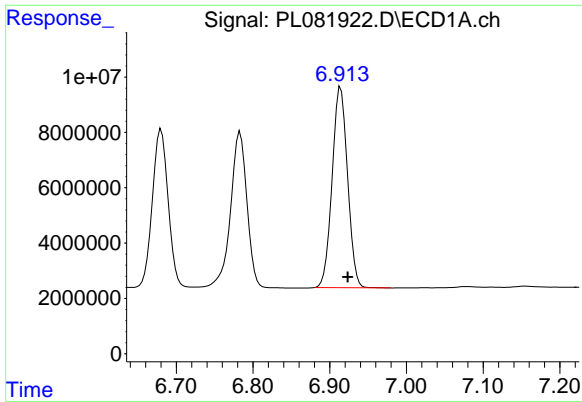
#18 Endrin aldehyde

R.T.: 6.680 min
 Delta R.T.: -0.010 min
 Response: 79875810
 Conc: 48.82 ng/ml



#18 Endrin aldehyde

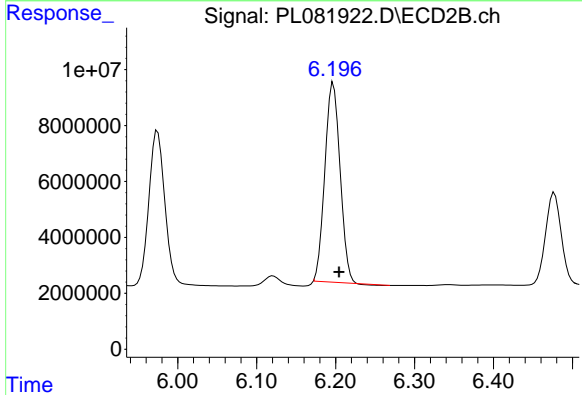
R.T.: 5.974 min
 Delta R.T.: -0.007 min
 Response: 78933021
 Conc: 50.83 ng/ml



#19 Endosulfan Sulfate

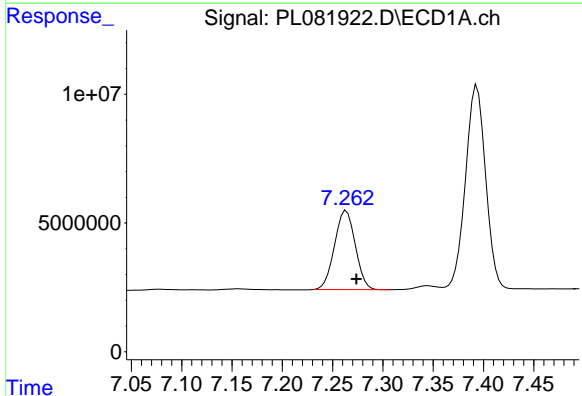
R.T.: 6.914 min
 Delta R.T.: -0.009 min
 Response: 101439261
 Conc: 48.67 ng/ml

Instrument :
 ECD_L
 ClientSampleId :



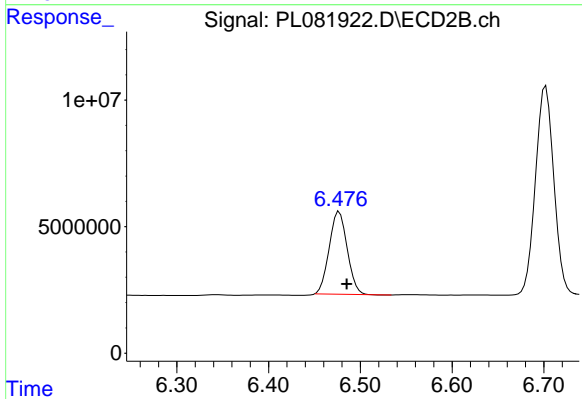
#19 Endosulfan Sulfate

R.T.: 6.197 min
 Delta R.T.: -0.007 min
 Response: 95343731
 Conc: 49.00 ng/ml



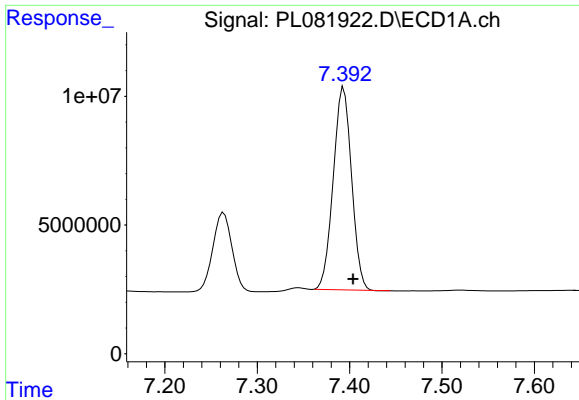
#20 Methoxychlor

R.T.: 7.264 min
 Delta R.T.: -0.010 min
 Response: 44069146
 Conc: 40.92 ng/ml



#20 Methoxychlor

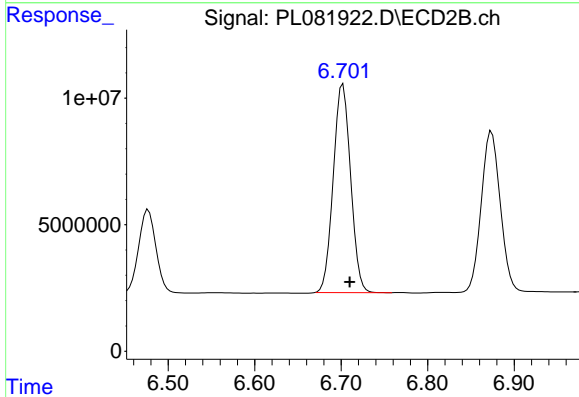
R.T.: 6.477 min
 Delta R.T.: -0.008 min
 Response: 44592689
 Conc: 44.77 ng/ml



#21 Endrin ketone

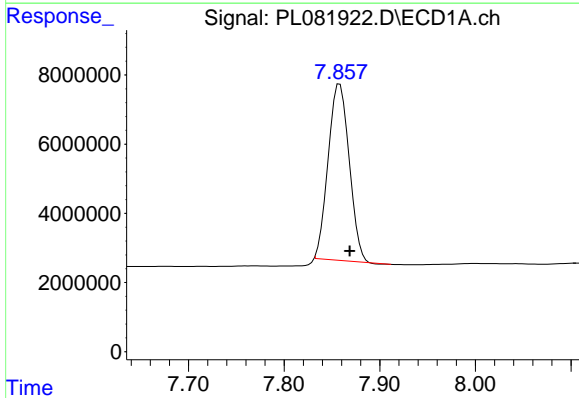
R.T.: 7.394 min
 Delta R.T.: -0.010 min
 Response: 108396199
 Conc: 51.75 ng/ml

Instrument :
 ECD_L
 ClientSampleId :



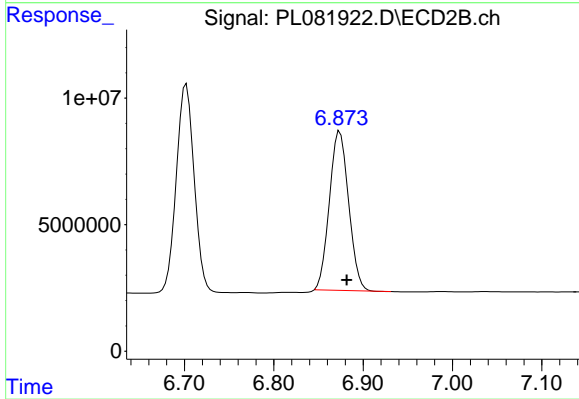
#21 Endrin ketone

R.T.: 6.702 min
 Delta R.T.: -0.008 min
 Response: 114352750
 Conc: 53.51 ng/ml



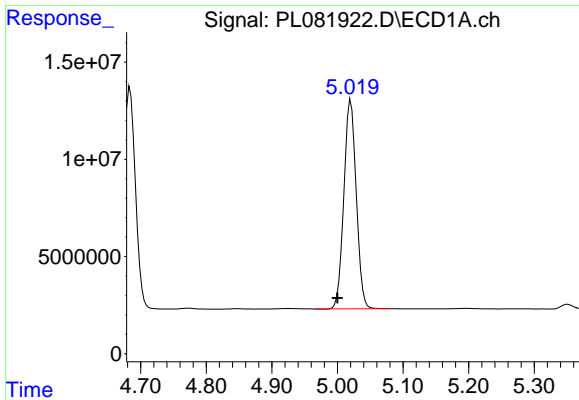
#22 Mirex

R.T.: 7.858 min
 Delta R.T.: -0.010 min
 Response: 77574772
 Conc: 45.28 ng/ml



#22 Mirex

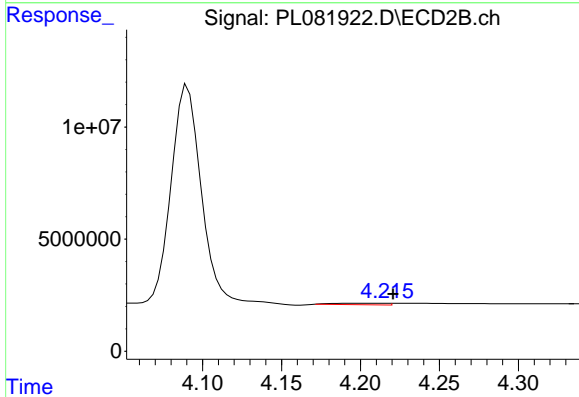
R.T.: 6.874 min
 Delta R.T.: -0.008 min
 Response: 94017006
 Conc: 48.97 ng/ml



#24 Chlordane-2

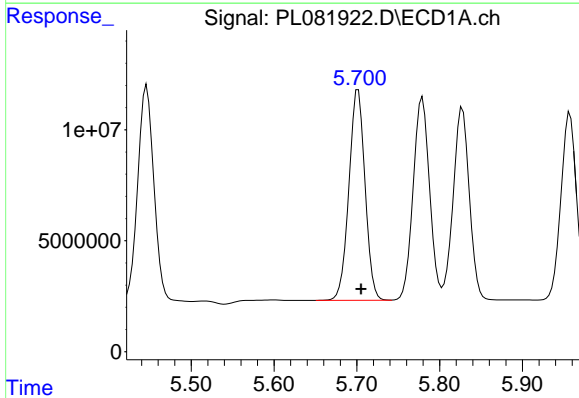
R.T.: 5.020 min
 Delta R.T.: 0.021 min
 Response: 141160785
 Conc: 1356.32 ng/ml

Instrument :
 ECD_L
 ClientSampleId :



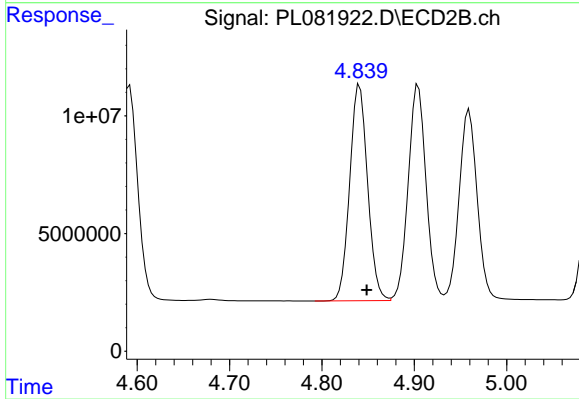
#24 Chlordane-2

R.T.: 4.209 min
 Delta R.T.: -0.011 min
 Response: 1619001
 Conc: 17.33 ng/ml



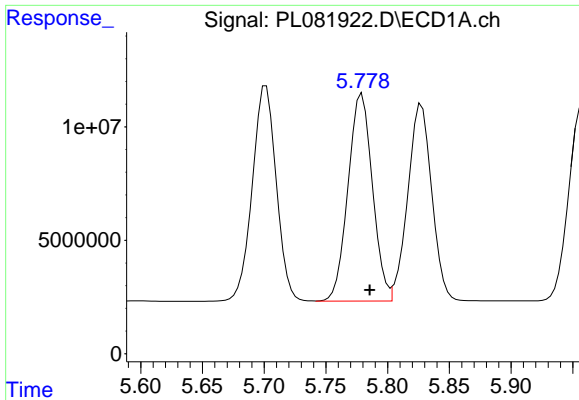
#25 Chlordane-3

R.T.: 5.702 min
 Delta R.T.: -0.003 min
 Response: 128381625
 Conc: 324.10 ng/ml



#25 Chlordane-3

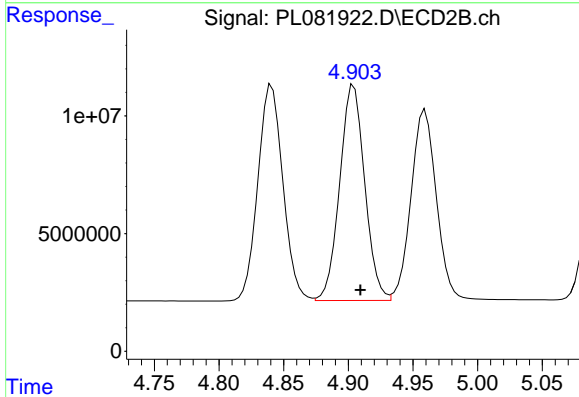
R.T.: 4.841 min
 Delta R.T.: -0.008 min
 Response: 123752340
 Conc: 491.33 ng/ml



#26 Chlordane-4

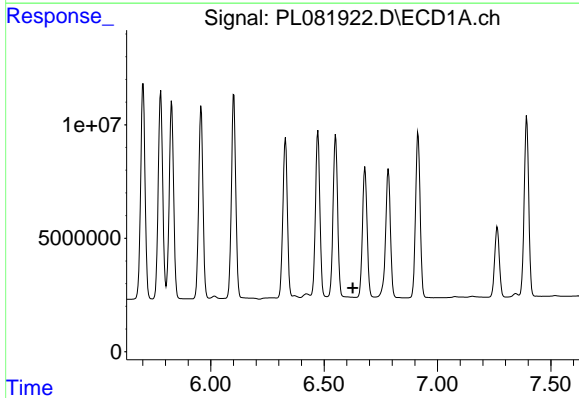
R.T.: 5.779 min
 Delta R.T.: -0.006 min
 Response: 125922431
 Conc: 263.13 ng/ml

Instrument :
 ECD_L
 ClientSampleId :



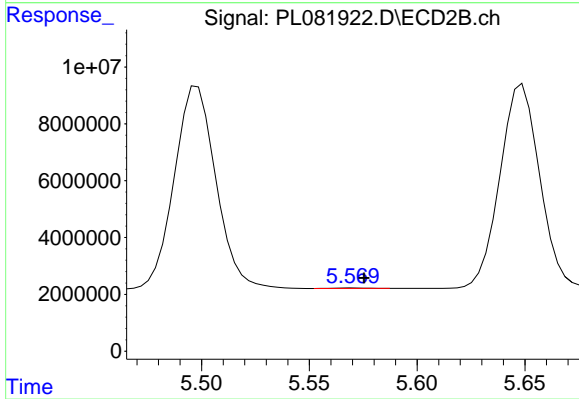
#26 Chlordane-4

R.T.: 4.904 min
 Delta R.T.: -0.005 min
 Response: 123136127
 Conc: 470.11 ng/ml



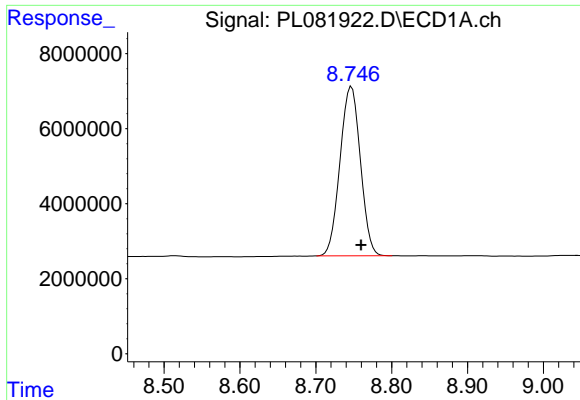
#27 Chlordane-5

R.T.: 0.000 min
 Exp R.T. : 6.627 min
 Response: 0
 Conc: N.D.



#27 Chlordane-5

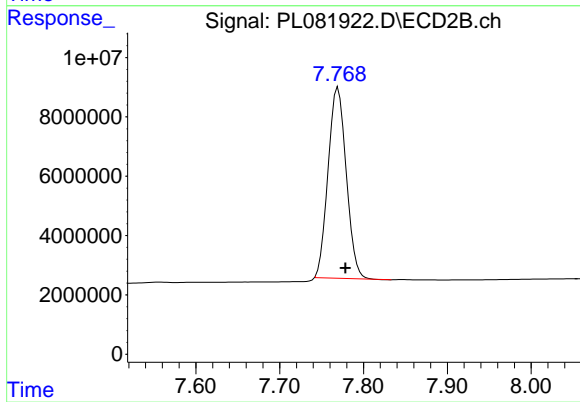
R.T.: 5.570 min
 Delta R.T.: -0.005 min
 Response: 161605
 Conc: 2.42 ng/ml



#28 Decachlorobiphenyl

R.T.: 8.747 min
Delta R.T.: -0.013 min
Response: 84354608
Conc: 47.14 ng/ml

Instrument :
ECD_L
ClientSampleId :



#28 Decachlorobiphenyl

R.T.: 7.770 min
Delta R.T.: -0.009 min
Response: 96747552
Conc: 48.78 ng/ml