

Data Path : Z:\pestpcbsrv\HPCHEM1\ECD_L\Data\PL040723\
 Data File : PL081925.D
 Signal(s) : Signal #1: ECD1A.ch Signal #2: ECD2B.ch
 Acq On : 08 Apr 2023 08:08
 Operator : AR\AJ
 Sample : 02222-02
 Misc :
 ALS Vial : 22 Sample Multiplier: 1

Instrument :
 ECD_L
 ClientSampleId :

Integration File signal 1: autoint1.e
 Integration File signal 2: autoint2.e
 Quant Time: Apr 08 12:42:18 2023
 Quant Method : Z:\pestpcbsrv\HPCHEM1\ECD_L\methods\PL032223.M
 Quant Title : GC Extractables
 QLast Update : Thu Mar 23 01:07:33 2023
 Response via : Initial Calibration
 Integrator: ChemStation

Volume Inj. : 1 µl
 Signal #1 Phase : ZB-MR2 Signal #2 Phase: ZB-MR1
 Signal #1 Info : 30M x 0.32mm x0.2 Signal #2 Info : 30M x 0.32mm x0.5µm

Compound	RT#1	RT#2	Resp#1	Resp#2	ng/ml	ng/ml

System Monitoring Compounds						
1) SA Tetrachlo...	3.328	2.655	21840754	18290823	9.390	9.163
28) SA Decachlor...	8.749	7.772	17877963	21502249	9.990	10.842
Target Compounds						
2) A alpha-BHC	0.000	3.148	0	235062	N.D.	0.081 #
3) MA gamma-BHC...	4.106	0.000	1135173	0	0.357	N.D. #
4) MA Heptachlor	0.000	3.844f	0	438920	N.D.	0.153 #
5) MB Aldrin	5.019	4.091	2076867	2960447	0.726	1.111 #
6) B beta-BHC	4.316	3.782	6173800	-175026	4.102	N.D. #
7) B delta-BHC	4.546	4.006	1914828	1461729	0.630	0.565
8) B Heptachlo...	5.447	4.594	3282826	5365176	1.207	2.209 #
9) A Endosulfan I	5.819f	0.000	1162198	0	0.470	N.D. #
10) B gamma-Chl...	5.703	4.848	2335376	4262200	0.890	1.754 #
11) B alpha-Chl...	5.780	4.905	2816231	5345189	1.088	2.201 #
12) B 4,4'-DDE	5.973	5.096	-2164655	5656642	N.D.	2.872
13) MA Dieldrin	0.000	5.228	0	3084679	N.D.	1.371 #
14) MA Endrin	0.000	5.526f	0	709214	N.D.	0.350 #
16) A 4,4'-DDD	0.000	5.651	0	193992	N.D.	0.128 #
17) MA 4,4'-DDT	6.786	5.898	1268465	683964	0.625	0.397 #
18) B Endrin al...	0.000	5.976	0	225157	N.D.	0.145 #
19) B Endosulfa...	0.000	6.198	0	229556	N.D.	0.118 #
21) B Endrin ke...	7.402	6.703	391946	118270	0.187	0.055 #
22) Mirex	0.000	6.877	0	141233	N.D.	0.074 #
23) Chlordane-1	0.000	3.649	0	3144384	N.D.	40.823 #
24) Chlordane-2	5.019f	0.000	2076867	0	19.955	N.D. #
25) Chlordane-3	5.703	4.848	2335376	4262200	5.896	16.922 #
26) Chlordane-4	5.780	4.905	2816231	5345189	5.885	20.407 #
27) Chlordane-5	6.608f	0.000	181938	0	2.143	N.D. #

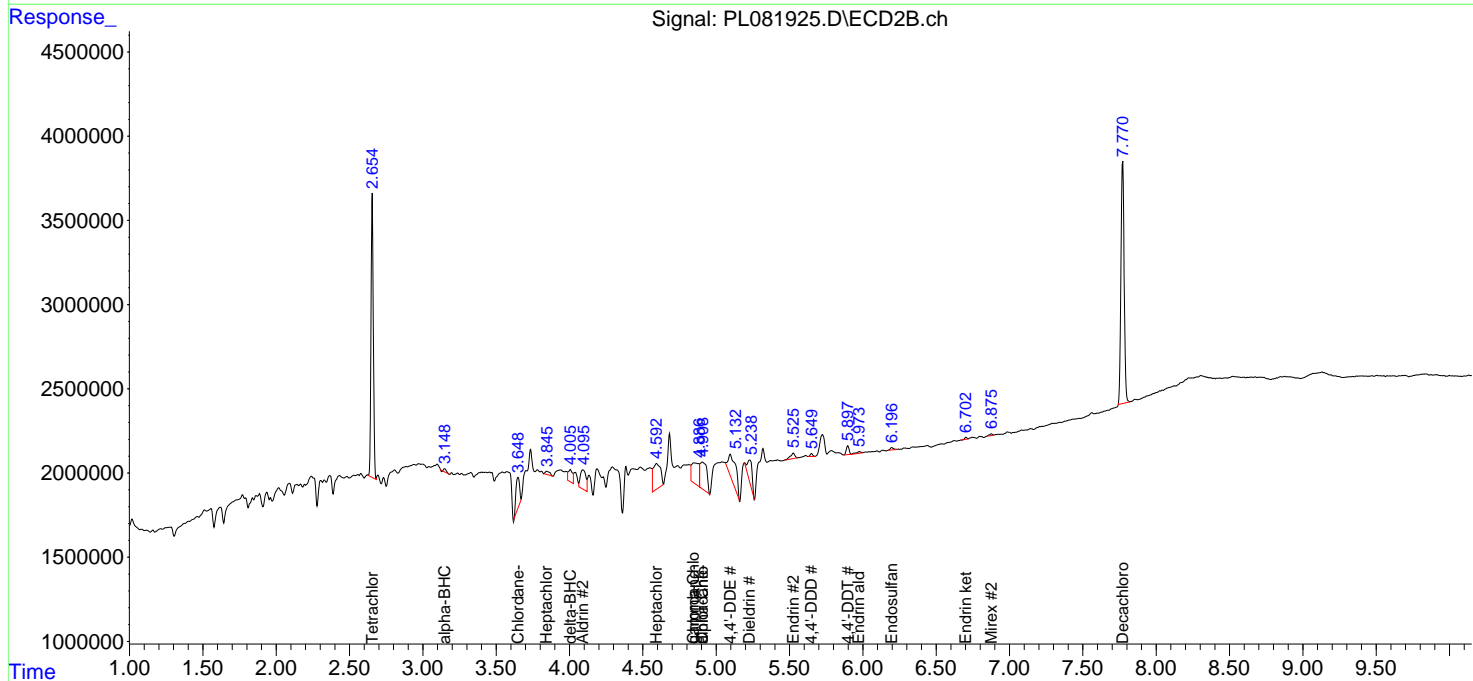
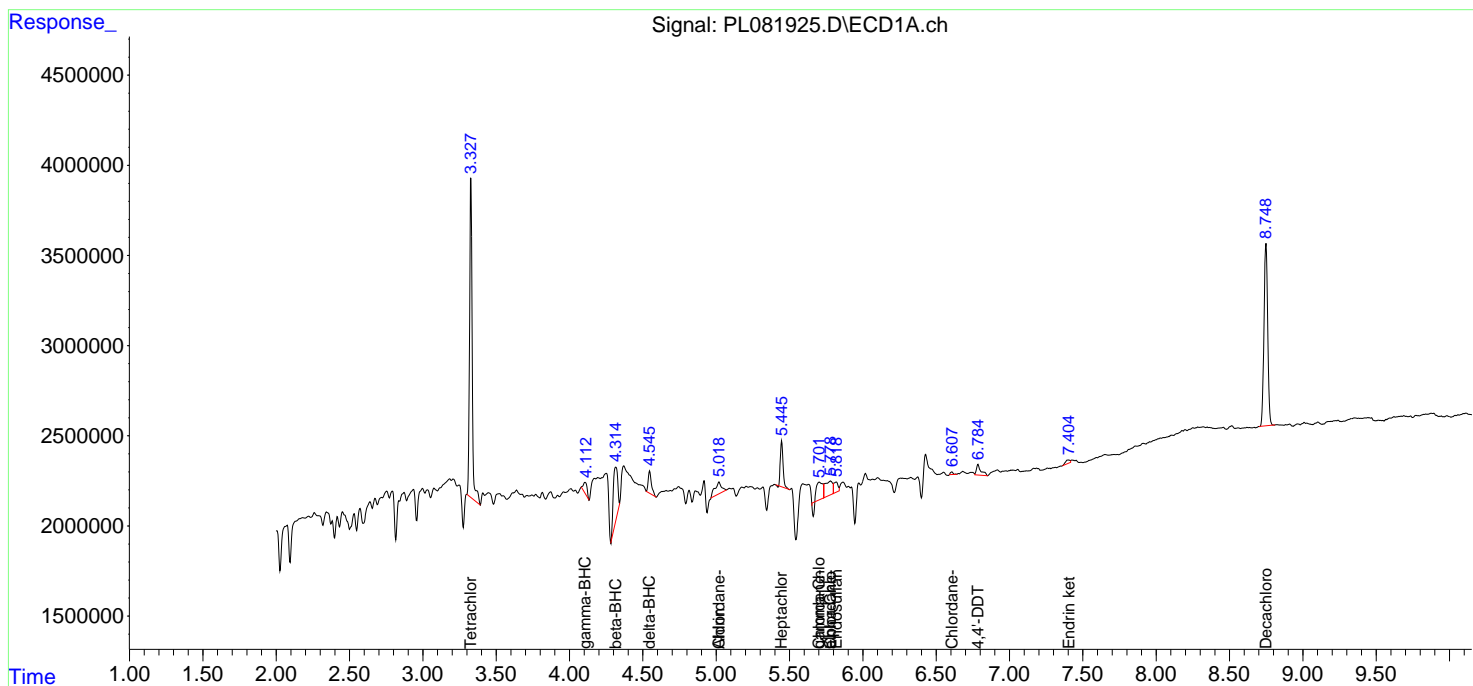
(f)=RT Delta > 1/2 Window (#)=Amounts differ by > 25% (m)=manual int.

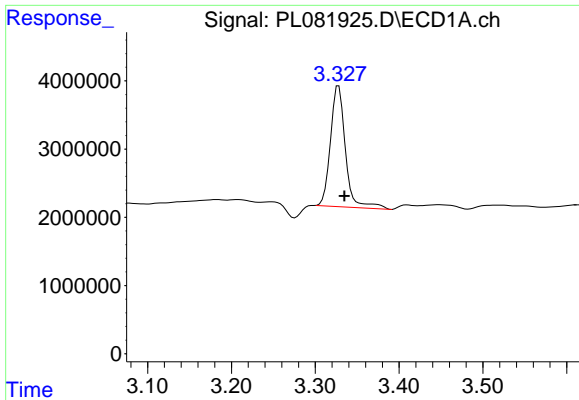
Data Path : Z:\pestpcbsrv\HPCHEM1\ECD_L\Data\PL040723\
 Data File : PL081925.D
 Signal(s) : Signal #1: ECD1A.ch Signal #2: ECD2B.ch
 Acq On : 08 Apr 2023 08:08
 Operator : AR\AJ
 Sample : 02222-02
 Misc :
 ALS Vial : 22 Sample Multiplier: 1

Instrument :
 ECD_L
 ClientSampleId :

Integration File signal 1: autoint1.e
 Integration File signal 2: autoint2.e
 Quant Time: Apr 08 12:42:18 2023
 Quant Method : Z:\pestpcbsrv\HPCHEM1\ECD_L\methods\PL032223.M
 Quant Title : GC Extractables
 QLast Update : Thu Mar 23 01:07:33 2023
 Response via : Initial Calibration
 Integrator: ChemStation

Volume Inj. : 1 µl
 Signal #1 Phase : ZB-MR2 Signal #2 Phase: ZB-MR1
 Signal #1 Info : 30M x 0.32mm x0.2 Signal #2 Info : 30M x 0.32mm x0.5µm

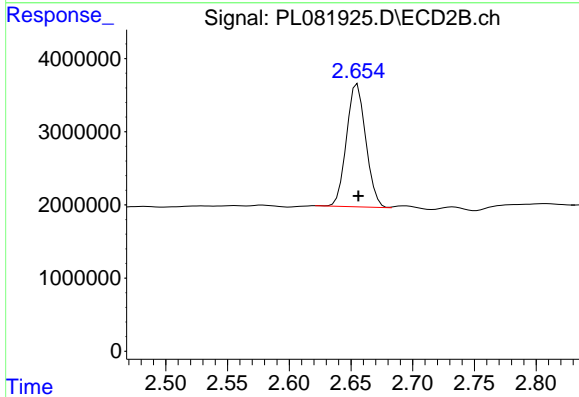




#1 Tetrachloro-m-xylene

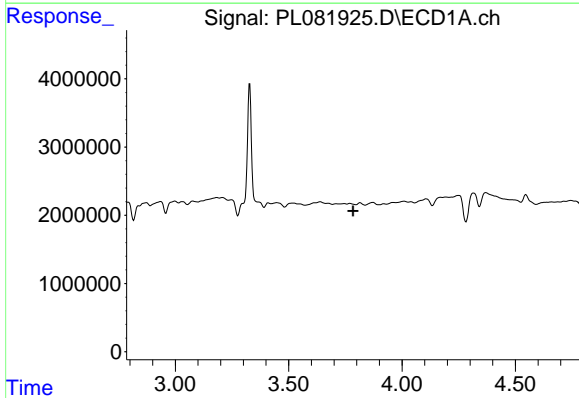
R.T.: 3.328 min
 Delta R.T.: -0.007 min
 Response: 21840754
 Conc: 9.39 ng/ml

Instrument :
 ECD_L
 ClientSampleId :



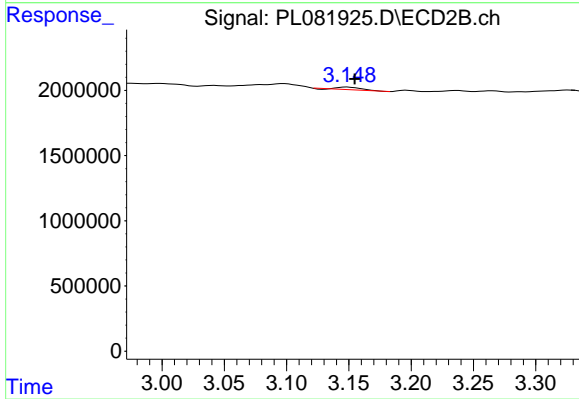
#1 Tetrachloro-m-xylene

R.T.: 2.655 min
 Delta R.T.: 0.000 min
 Response: 18290823
 Conc: 9.16 ng/ml



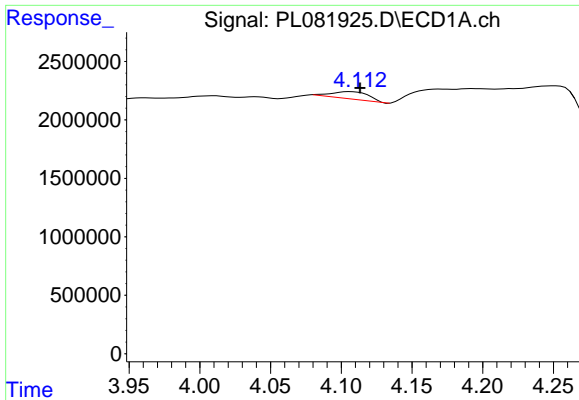
#2 alpha-BHC

R.T.: 0.000 min
 Exp R.T. : 3.785 min
 Response: 0
 Conc: N.D.



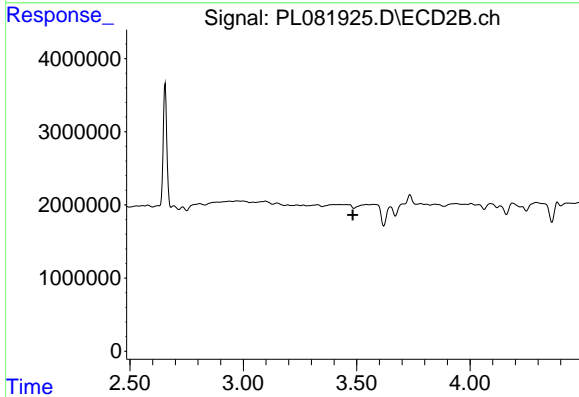
#2 alpha-BHC

R.T.: 3.148 min
 Delta R.T.: -0.006 min
 Response: 235062
 Conc: 0.08 ng/ml

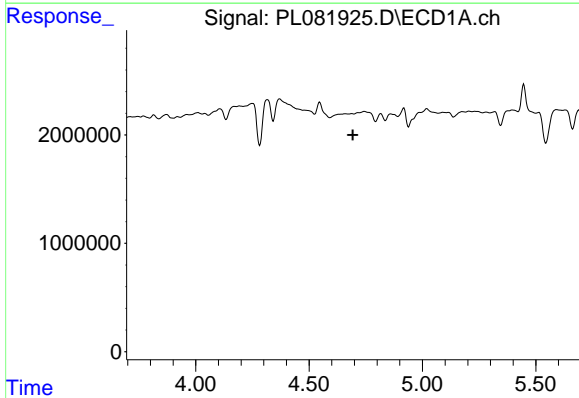


#3 gamma-BHC (Lindane)
 R.T.: 4.106 min
 Delta R.T.: -0.007 min
 Response: 1135173
 Conc: 0.36 ng/ml

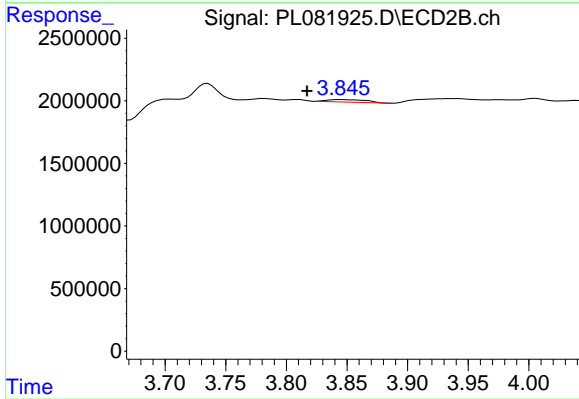
Instrument :
 ECD_L
 ClientSampleId :



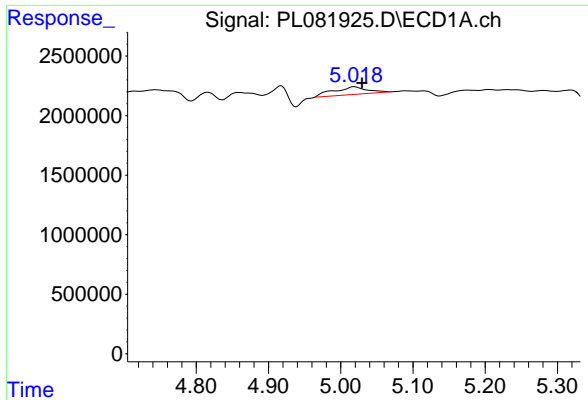
#3 gamma-BHC (Lindane)
 R.T.: 0.000 min
 Exp R.T. : 3.483 min
 Response: 0
 Conc: N.D.



#4 Heptachlor
 R.T.: 0.000 min
 Exp R.T. : 4.693 min
 Response: 0
 Conc: N.D.

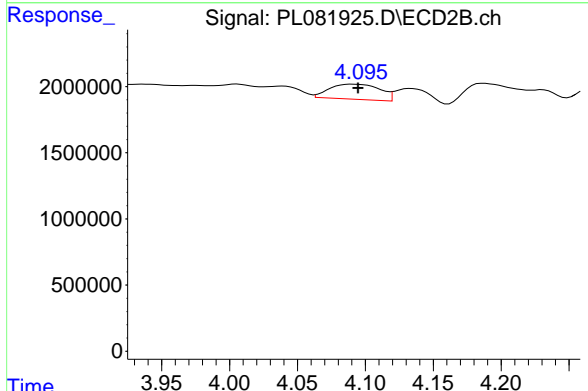


#4 Heptachlor
 R.T.: 3.844 min
 Delta R.T.: 0.027 min
 Response: 438920
 Conc: 0.15 ng/ml

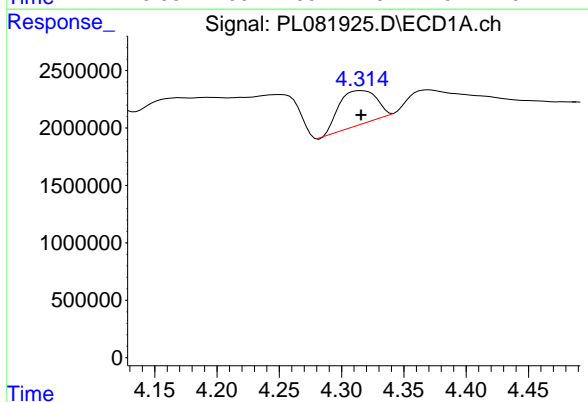


#5 Aldrin
 R.T.: 5.019 min
 Delta R.T.: -0.011 min
 Response: 2076867
 Conc: 0.73 ng/ml

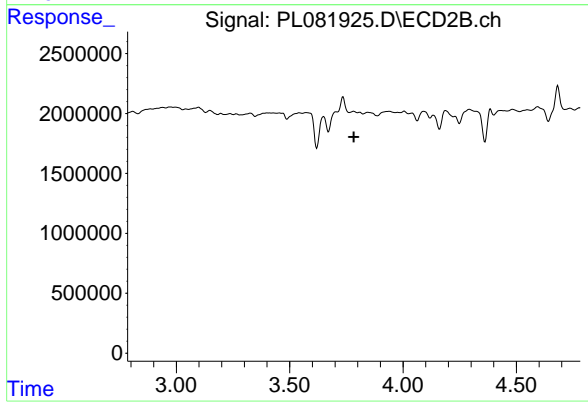
Instrument :
 ECD_L
 ClientSampleId :



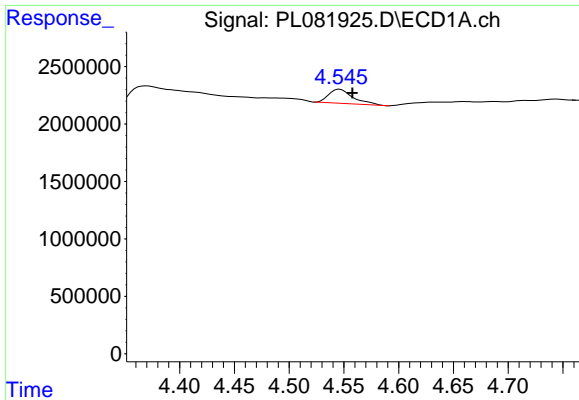
#5 Aldrin
 R.T.: 4.091 min
 Delta R.T.: -0.003 min
 Response: 2960447
 Conc: 1.11 ng/ml



#6 beta-BHC
 R.T.: 4.316 min
 Delta R.T.: 0.000 min
 Response: 6173800
 Conc: 4.10 ng/ml



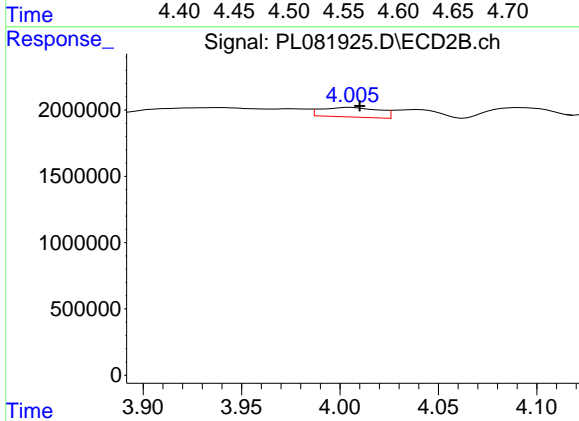
#6 beta-BHC
 R.T.: 3.782 min
 Delta R.T.: 0.000 min
 Response: -175026
 Conc: N.D.



#7 delta-BHC

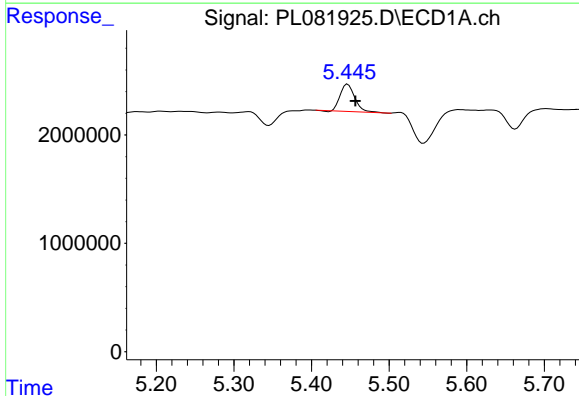
R.T.: 4.546 min
 Delta R.T.: -0.011 min
 Response: 1914828
 Conc: 0.63 ng/ml

Instrument :
 ECD_L
 ClientSampleId :



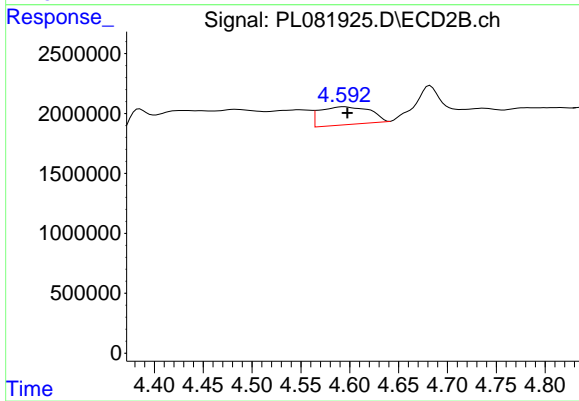
#7 delta-BHC

R.T.: 4.006 min
 Delta R.T.: -0.004 min
 Response: 1461729
 Conc: 0.57 ng/ml



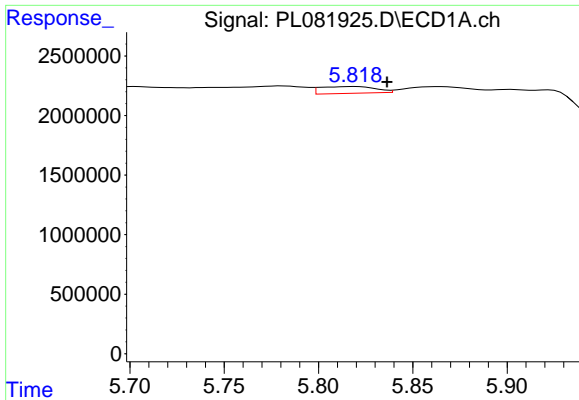
#8 Heptachlor epoxide

R.T.: 5.447 min
 Delta R.T.: -0.010 min
 Response: 3282826
 Conc: 1.21 ng/ml



#8 Heptachlor epoxide

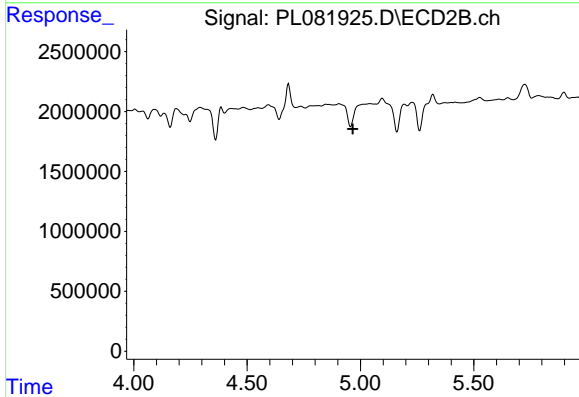
R.T.: 4.594 min
 Delta R.T.: -0.004 min
 Response: 5365176
 Conc: 2.21 ng/ml



#9 Endosulfan I

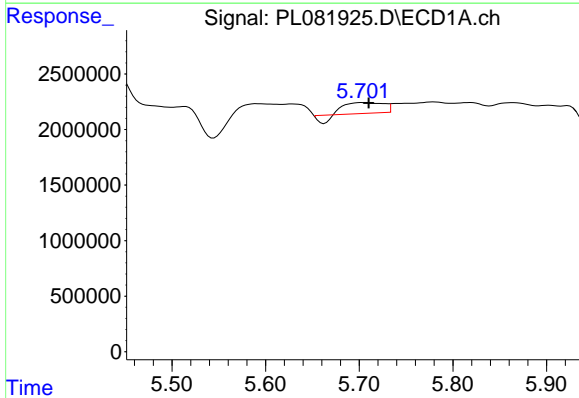
R.T.: 5.819 min
 Delta R.T.: -0.018 min
 Response: 1162198
 Conc: 0.47 ng/ml

Instrument :
 ECD_L
 ClientSampleId :



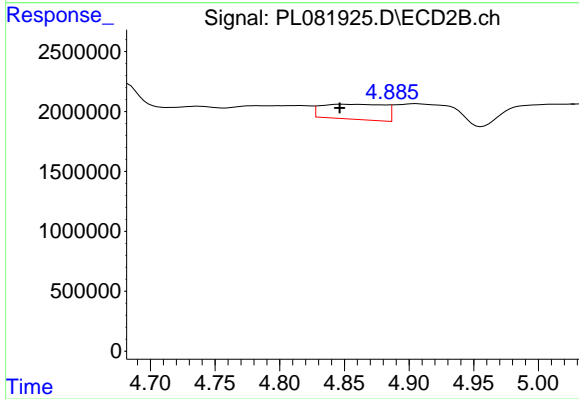
#9 Endosulfan I

R.T.: 0.000 min
 Exp R.T. : 4.966 min
 Response: 0
 Conc: N.D.



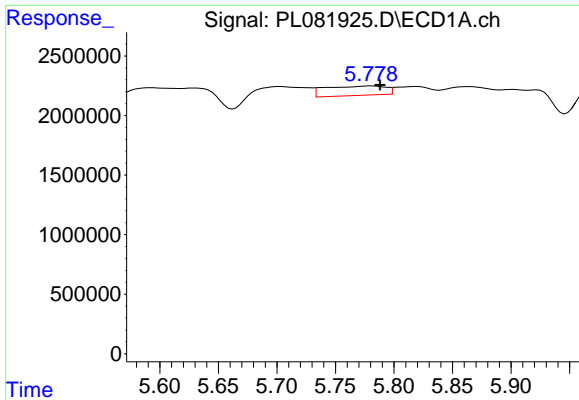
#10 gamma-Chlordane

R.T.: 5.703 min
 Delta R.T.: -0.007 min
 Response: 2335376
 Conc: 0.89 ng/ml



#10 gamma-Chlordane

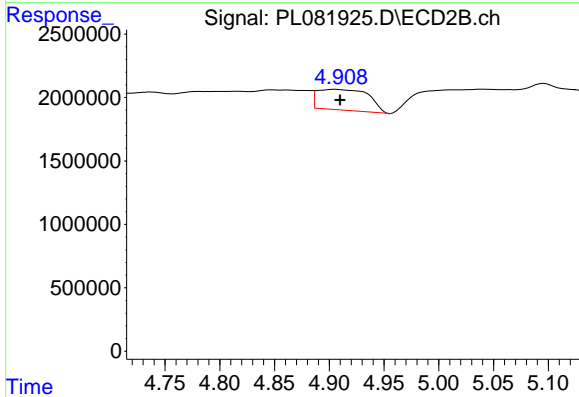
R.T.: 4.848 min
 Delta R.T.: 0.001 min
 Response: 4262200
 Conc: 1.75 ng/ml



#11 alpha-Chlordane

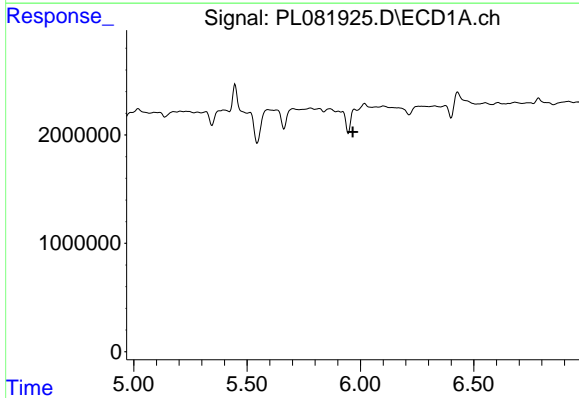
R.T.: 5.780 min
 Delta R.T.: -0.008 min
 Response: 2816231
 Conc: 1.09 ng/ml

Instrument :
 ECD_L
 ClientSampleId :



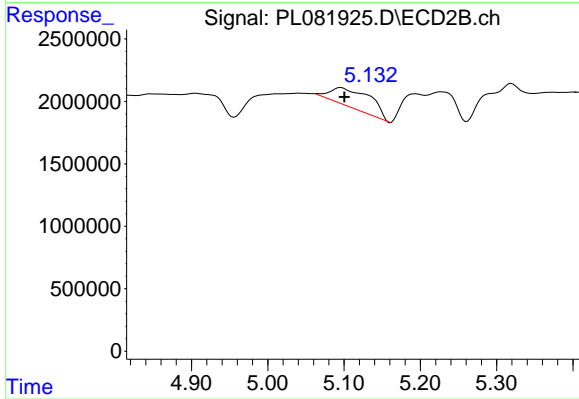
#11 alpha-Chlordane

R.T.: 4.905 min
 Delta R.T.: -0.004 min
 Response: 5345189
 Conc: 2.20 ng/ml



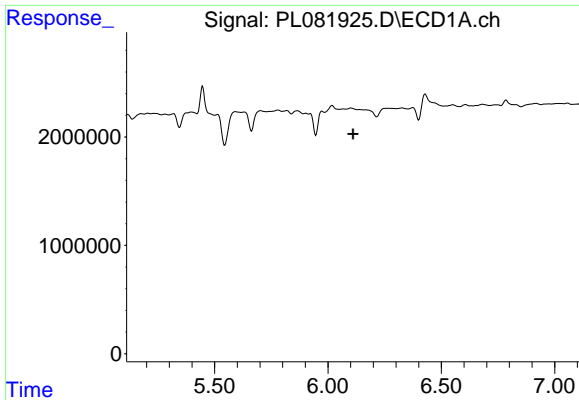
#12 4,4'-DDE

R.T.: 5.973 min
 Delta R.T.: 0.007 min
 Response: -2164655
 Conc: N.D.



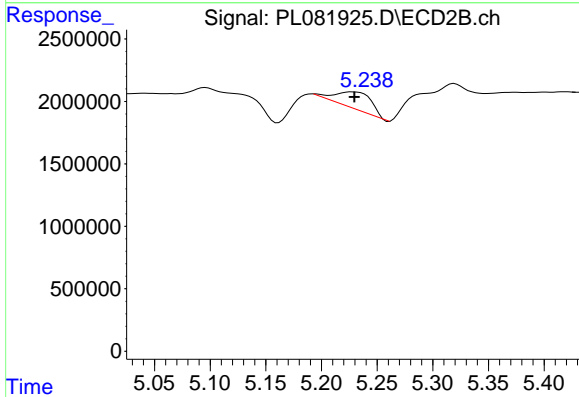
#12 4,4'-DDE

R.T.: 5.096 min
 Delta R.T.: -0.005 min
 Response: 5656642
 Conc: 2.87 ng/ml

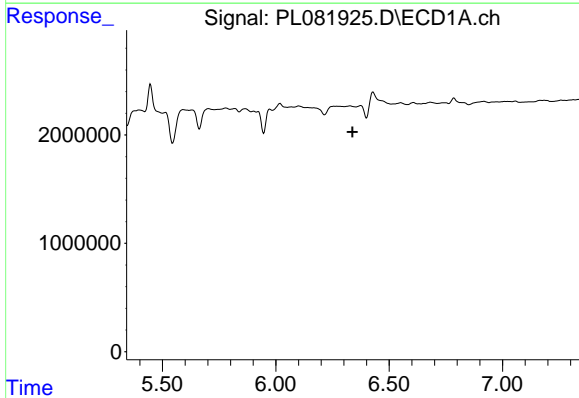


#13 Dieldrin
 R.T.: 0.000 min
 Exp R.T. : 6.111 min
 Response: 0
 Conc: N.D.

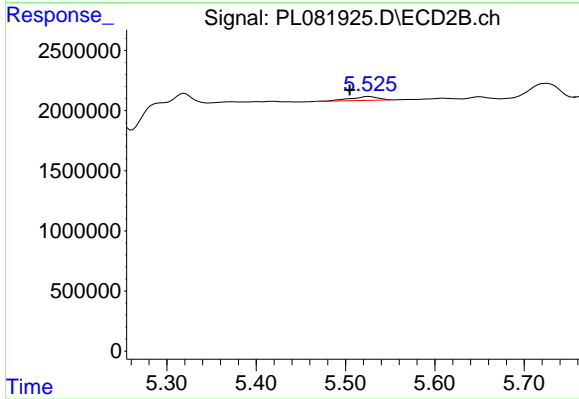
Instrument :
 ECD_L
 ClientSampleId :



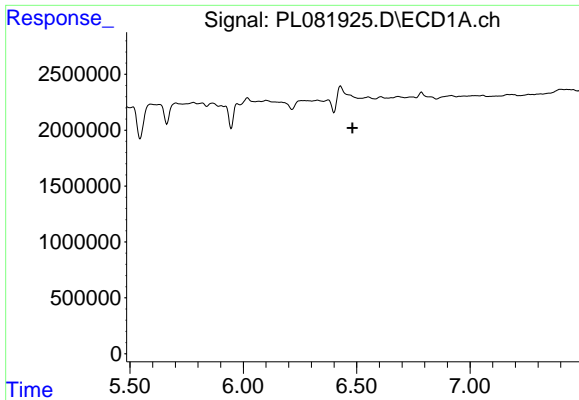
#13 Dieldrin
 R.T.: 5.228 min
 Delta R.T.: -0.002 min
 Response: 3084679
 Conc: 1.37 ng/ml



#14 Endrin
 R.T.: 0.000 min
 Exp R.T. : 6.338 min
 Response: 0
 Conc: N.D.



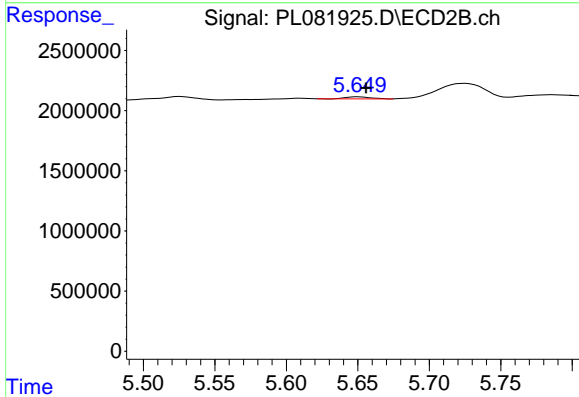
#14 Endrin
 R.T.: 5.526 min
 Delta R.T.: 0.022 min
 Response: 709214
 Conc: 0.35 ng/ml



#16 4,4'-DDD

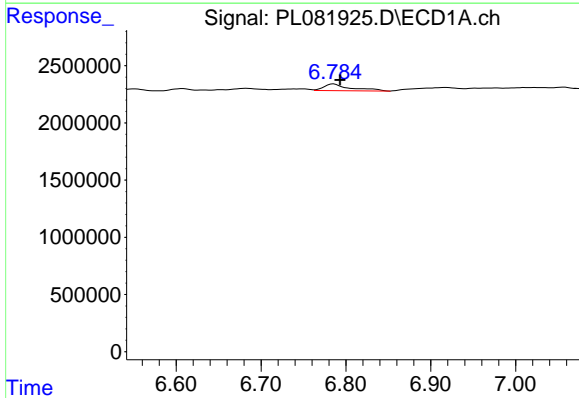
R.T.: 0.000 min
 Exp R.T.: 6.482 min
 Response: 0
 Conc: N.D.

Instrument :
 ECD_L
 ClientSampleId :



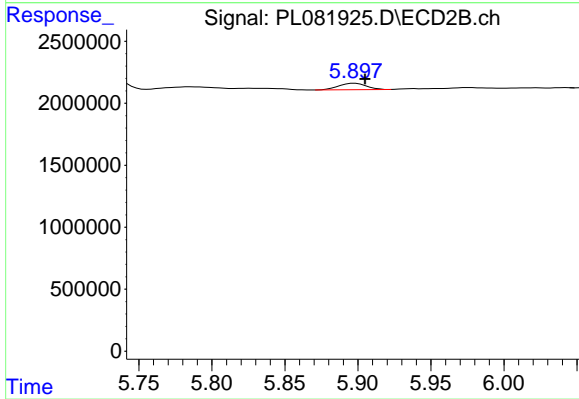
#16 4,4'-DDD

R.T.: 5.651 min
 Delta R.T.: -0.005 min
 Response: 193992
 Conc: 0.13 ng/ml



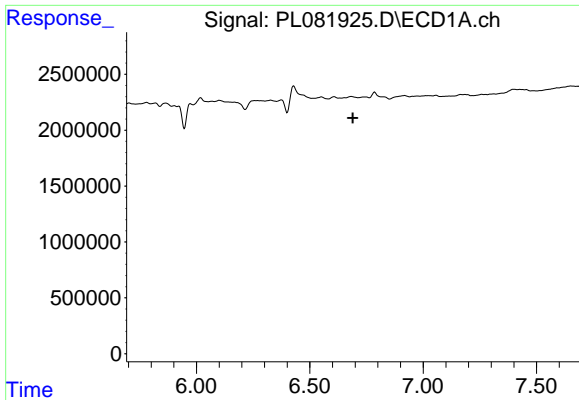
#17 4,4'-DDT

R.T.: 6.786 min
 Delta R.T.: -0.007 min
 Response: 1268465
 Conc: 0.62 ng/ml



#17 4,4'-DDT

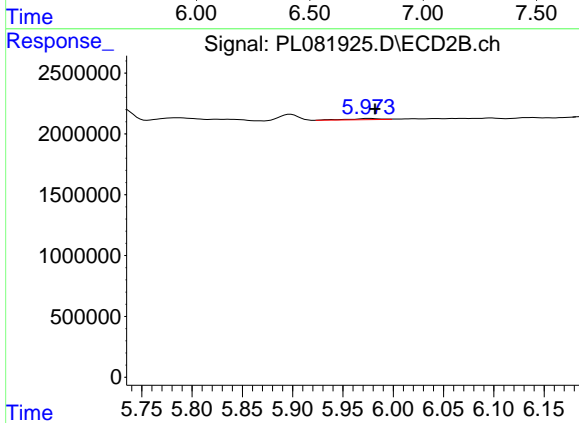
R.T.: 5.898 min
 Delta R.T.: -0.007 min
 Response: 683964
 Conc: 0.40 ng/ml



#18 Endrin aldehyde

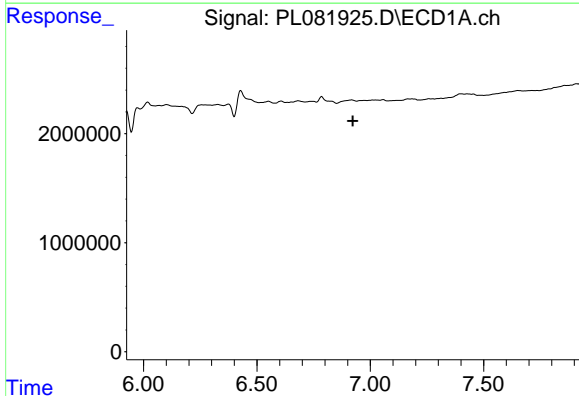
R.T.: 0.000 min
 Exp R.T.: 6.690 min
 Response: 0
 Conc: N.D.

Instrument :
 ECD_L
 ClientSampleId :



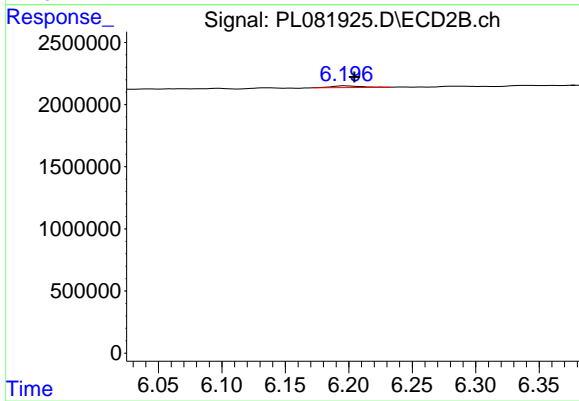
#18 Endrin aldehyde

R.T.: 5.976 min
 Delta R.T.: -0.006 min
 Response: 225157
 Conc: 0.14 ng/ml



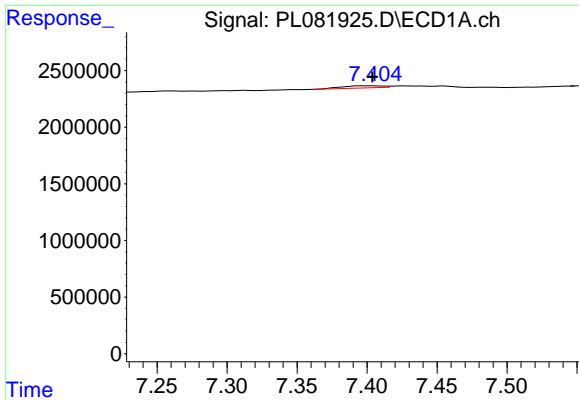
#19 Endosulfan Sulfate

R.T.: 0.000 min
 Exp R.T.: 6.924 min
 Response: 0
 Conc: N.D.



#19 Endosulfan Sulfate

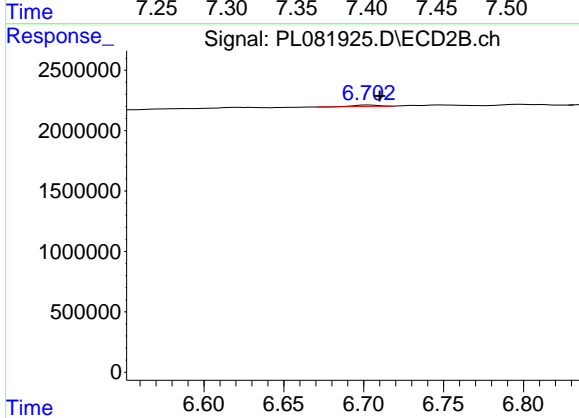
R.T.: 6.198 min
 Delta R.T.: -0.007 min
 Response: 229556
 Conc: 0.12 ng/ml



#21 Endrin ketone

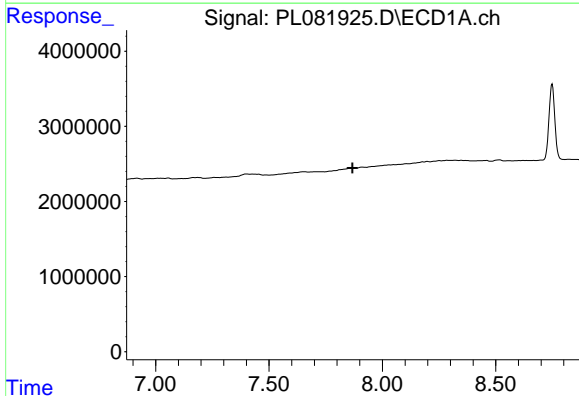
R.T.: 7.402 min
 Delta R.T.: -0.002 min
 Response: 391946
 Conc: 0.19 ng/ml

Instrument :
 ECD_L
 ClientSampleId :



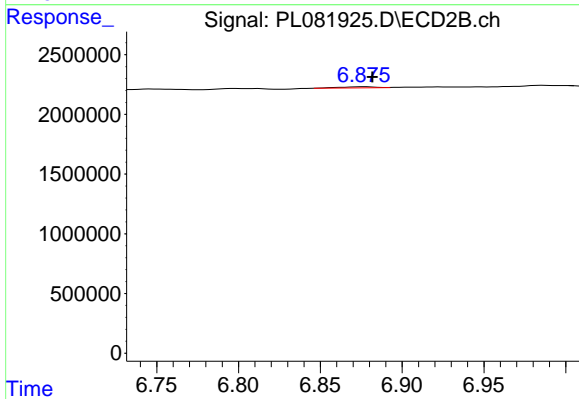
#21 Endrin ketone

R.T.: 6.703 min
 Delta R.T.: -0.007 min
 Response: 118270
 Conc: 0.06 ng/ml



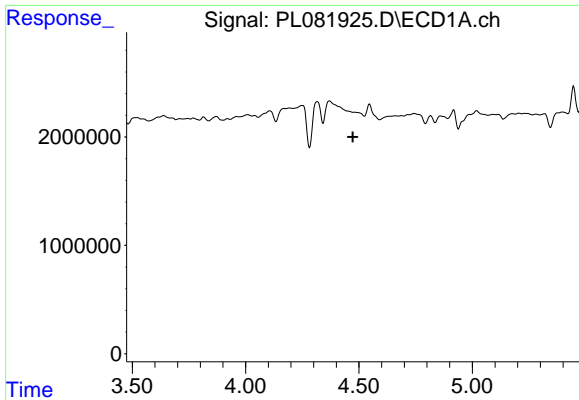
#22 Mirex

R.T.: 0.000 min
 Exp R.T. : 7.869 min
 Response: 0
 Conc: N.D.



#22 Mirex

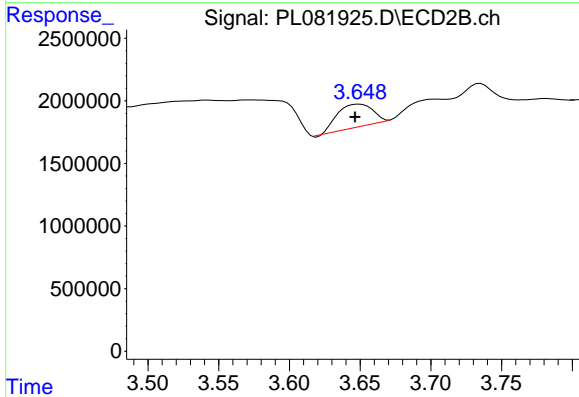
R.T.: 6.877 min
 Delta R.T.: -0.005 min
 Response: 141233
 Conc: 0.07 ng/ml



#23 Chlordane-1

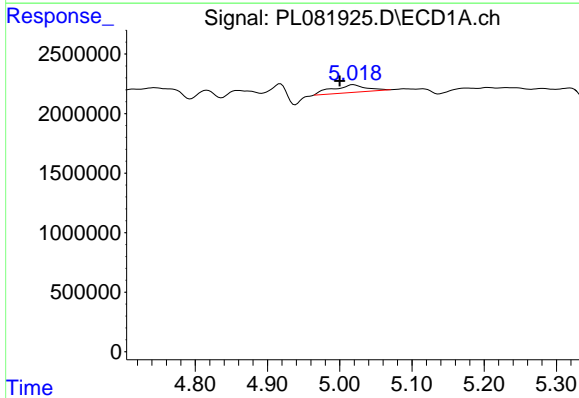
R.T.: 0.000 min
 Exp R.T.: 4.473 min
 Response: 0
 Conc: N.D.

Instrument :
 ECD_L
 ClientSampleId :



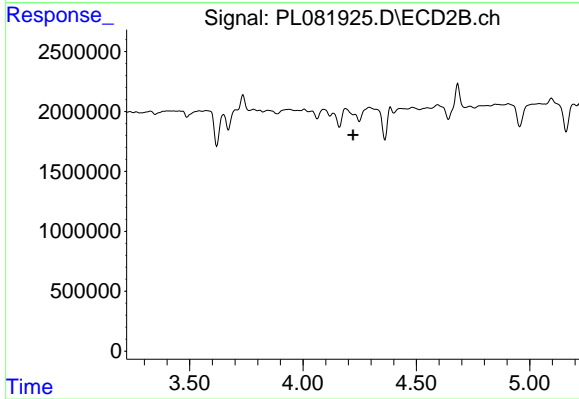
#23 Chlordane-1

R.T.: 3.649 min
 Delta R.T.: 0.003 min
 Response: 3144384
 Conc: 40.82 ng/ml



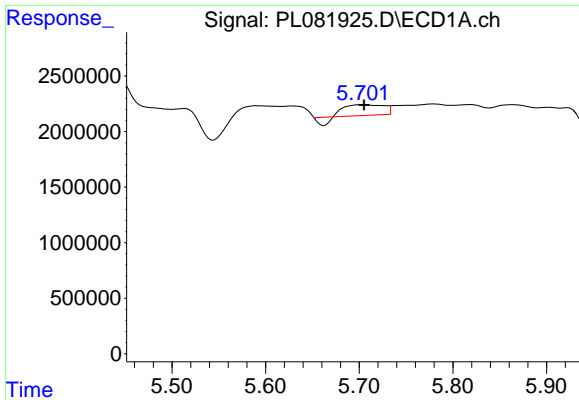
#24 Chlordane-2

R.T.: 5.019 min
 Delta R.T.: 0.019 min
 Response: 2076867
 Conc: 19.96 ng/ml



#24 Chlordane-2

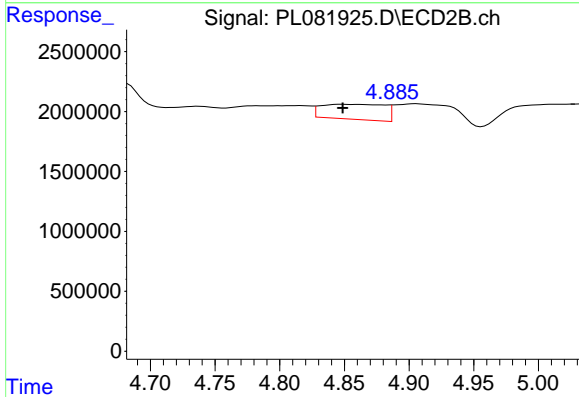
R.T.: 0.000 min
 Exp R.T.: 4.221 min
 Response: 0
 Conc: N.D.



#25 Chlordane-3

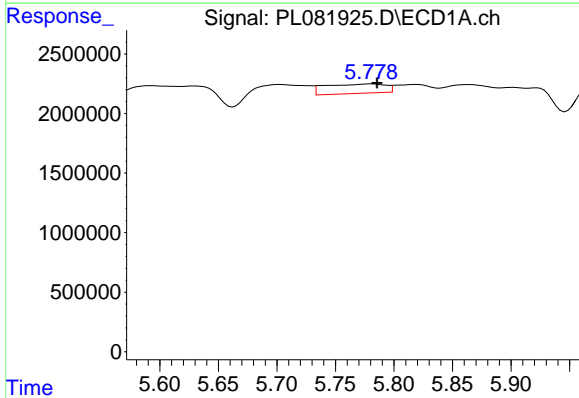
R.T.: 5.703 min
 Delta R.T.: -0.002 min
 Response: 2335376
 Conc: 5.90 ng/ml

Instrument :
 ECD_L
 ClientSampleId :



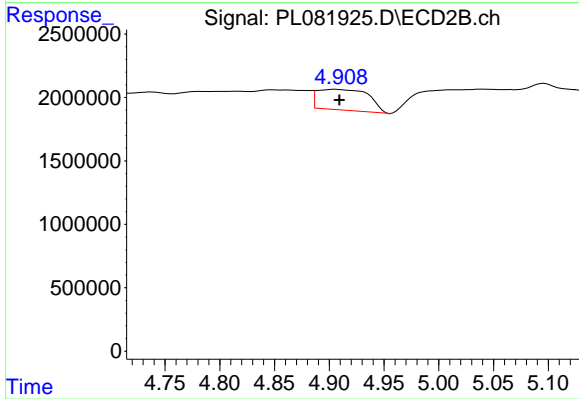
#25 Chlordane-3

R.T.: 4.848 min
 Delta R.T.: 0.000 min
 Response: 4262200
 Conc: 16.92 ng/ml



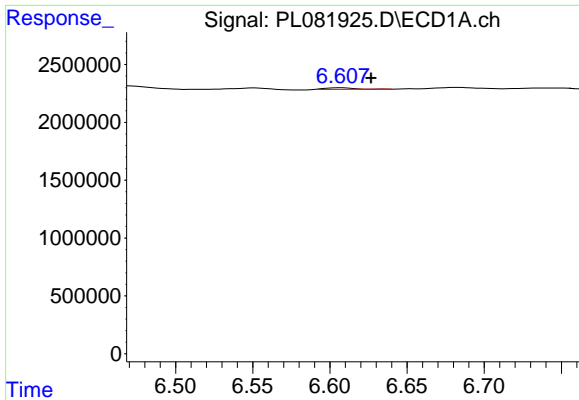
#26 Chlordane-4

R.T.: 5.780 min
 Delta R.T.: -0.006 min
 Response: 2816231
 Conc: 5.88 ng/ml



#26 Chlordane-4

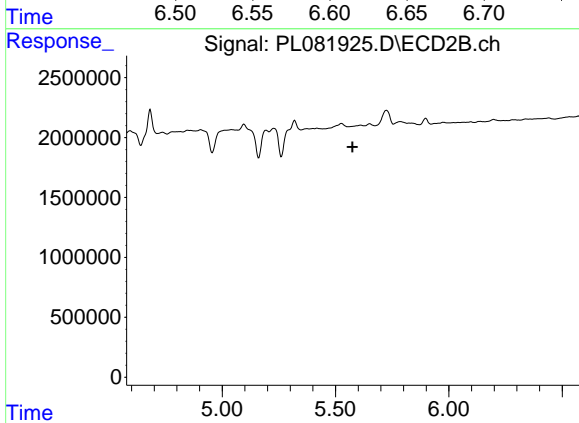
R.T.: 4.905 min
 Delta R.T.: -0.004 min
 Response: 5345189
 Conc: 20.41 ng/ml



#27 Chlordane-5

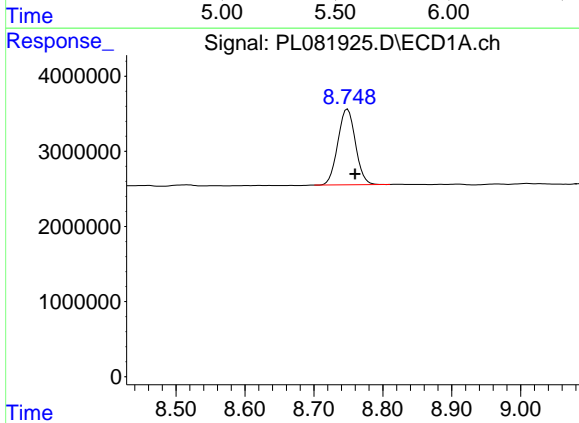
R.T.: 6.608 min
 Delta R.T.: -0.019 min
 Response: 181938
 Conc: 2.14 ng/ml

Instrument :
 ECD_L
 ClientSampleId :



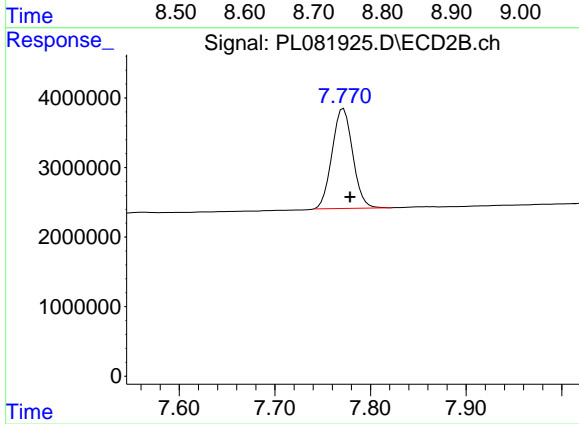
#27 Chlordane-5

R.T.: 0.000 min
 Exp R.T. : 5.575 min
 Response: 0
 Conc: N.D.



#28 Decachlorobiphenyl

R.T.: 8.749 min
 Delta R.T.: -0.011 min
 Response: 17877963
 Conc: 9.99 ng/ml



#28 Decachlorobiphenyl

R.T.: 7.772 min
 Delta R.T.: -0.007 min
 Response: 21502249
 Conc: 10.84 ng/ml