

Data Path : Z:\pestpcbsrv\HPCHEM1\ECD_L\Data\PL040723\
 Data File : PL081932.D
 Signal(s) : Signal #1: ECD1A.ch Signal #2: ECD2B.ch
 Acq On : 08 Apr 2023 09:45
 Operator : AR\AJ
 Sample : 02224-13
 Misc :
 ALS Vial : 29 Sample Multiplier: 1

Instrument :
 ECD_L
 ClientSampleId :

Integration File signal 1: autoint1.e
 Integration File signal 2: autoint2.e
 Quant Time: Apr 08 12:45:42 2023
 Quant Method : Z:\pestpcbsrv\HPCHEM1\ECD_L\methods\PL032223.M
 Quant Title : GC Extractables
 QLast Update : Thu Mar 23 01:07:33 2023
 Response via : Initial Calibration
 Integrator: ChemStation

Volume Inj. : 1 µl
 Signal #1 Phase : ZB-MR2 Signal #2 Phase: ZB-MR1
 Signal #1 Info : 30M x 0.32mm x0.2 Signal #2 Info : 30M x 0.32mm x0.5µm

	Compound	RT#1	RT#2	Resp#1	Resp#2	ng/ml	ng/ml

System Monitoring Compounds							
1)	SA Tetrachlo...	3.327	2.655	41532102	36253479	17.856	18.162
28)	SA Decachlor...	8.749	7.769	31605368	36448461	17.660	18.378
Target Compounds							
3)	MA gamma-BHC...	0.000	3.491	0	236385	N.D.	0.085 #
4)	MA Heptachlor	0.000	3.825	0	45566	N.D.	0.016 #
6)	B beta-BHC	4.310	0.000	1221025	0	0.811	N.D. #
7)	B delta-BHC	4.544	4.005	751711	1132764	0.247	0.438 #
8)	B Heptachlo...	5.446	4.602	3281004	1094543	1.206	0.451 #
9)	A Endosulfan I	5.865f	0.000	131716	0	0.053	N.D. #
10)	B gamma-Chl...	5.705	4.866f	525847	1462396	0.200	0.602 #
11)	B alpha-Chl...	0.000	4.924	0	3057951	N.D.	1.259 #
12)	B 4,4'-DDE	0.000	5.105	0	4252106	N.D.	2.159 #
13)	MA Dieldrin	0.000	5.226	0	316574	N.D.	0.141 #
14)	MA Endrin	0.000	5.525f	0	322185	N.D.	0.159 #
15)	B Endosulfa...	0.000	5.829f	0	170429	N.D.	0.094 #
17)	MA 4,4'-DDT	6.796	5.895	111741	333443	0.055	0.193 #
18)	B Endrin al...	0.000	5.980	0	47478	N.D.	0.031 #
19)	B Endosulfa...	6.919	6.197	58341	34224	0.028	0.018 #
20)	A Methoxychlor	0.000	6.504f	0	344513	N.D.	0.346 #
21)	B Endrin ke...	7.427f	0.000	801922	0	0.383	N.D. #
22)	Mirex	0.000	6.867	0	77534	N.D.	0.040 #
23)	Chlordane-1	0.000	3.675f	0	400491	N.D.	5.199 #
24)	Chlordane-2	0.000	4.221	0	1568588	N.D.	16.791 #
25)	Chlordane-3	5.705	4.866f	525847	1462396	1.328	5.806 #
26)	Chlordane-4	0.000	4.924	0	3057951	N.D.	11.675 #
27)	Chlordane-5	0.000	5.604f	0	667606	N.D.	10.003 #

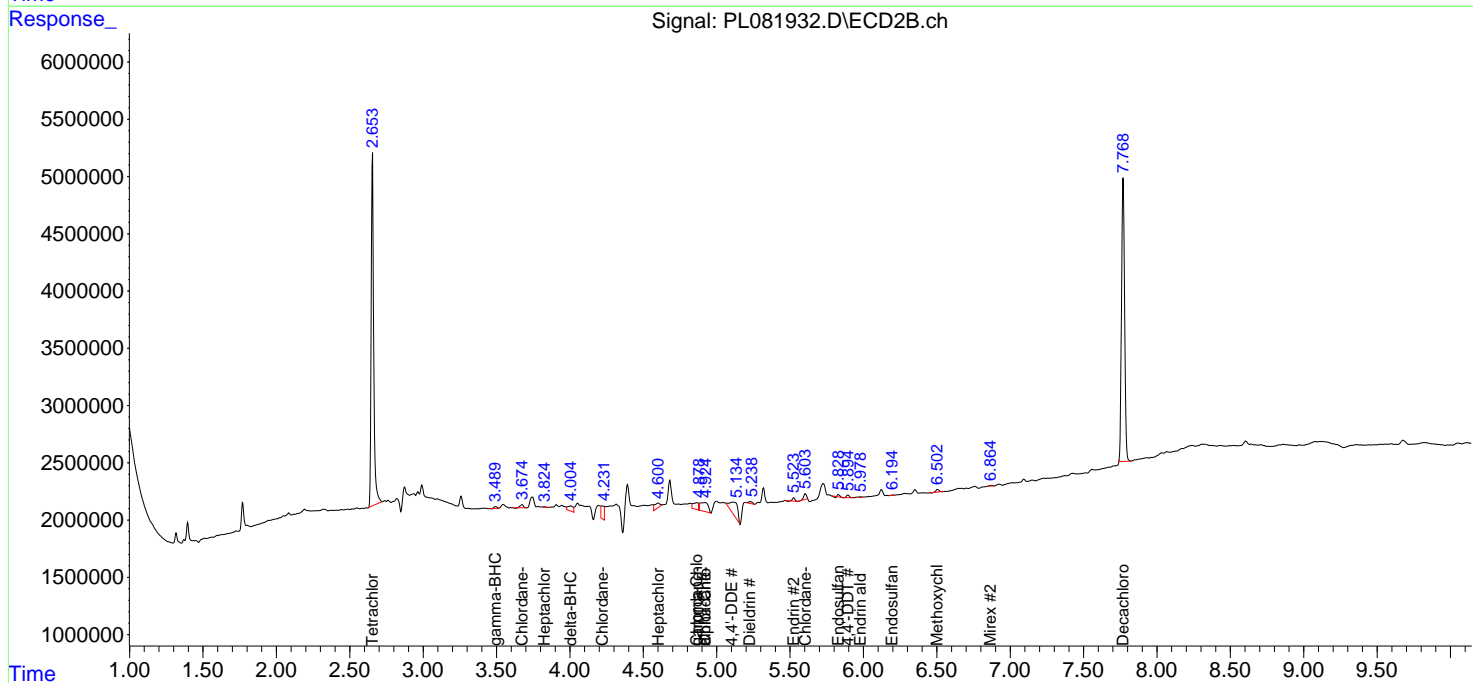
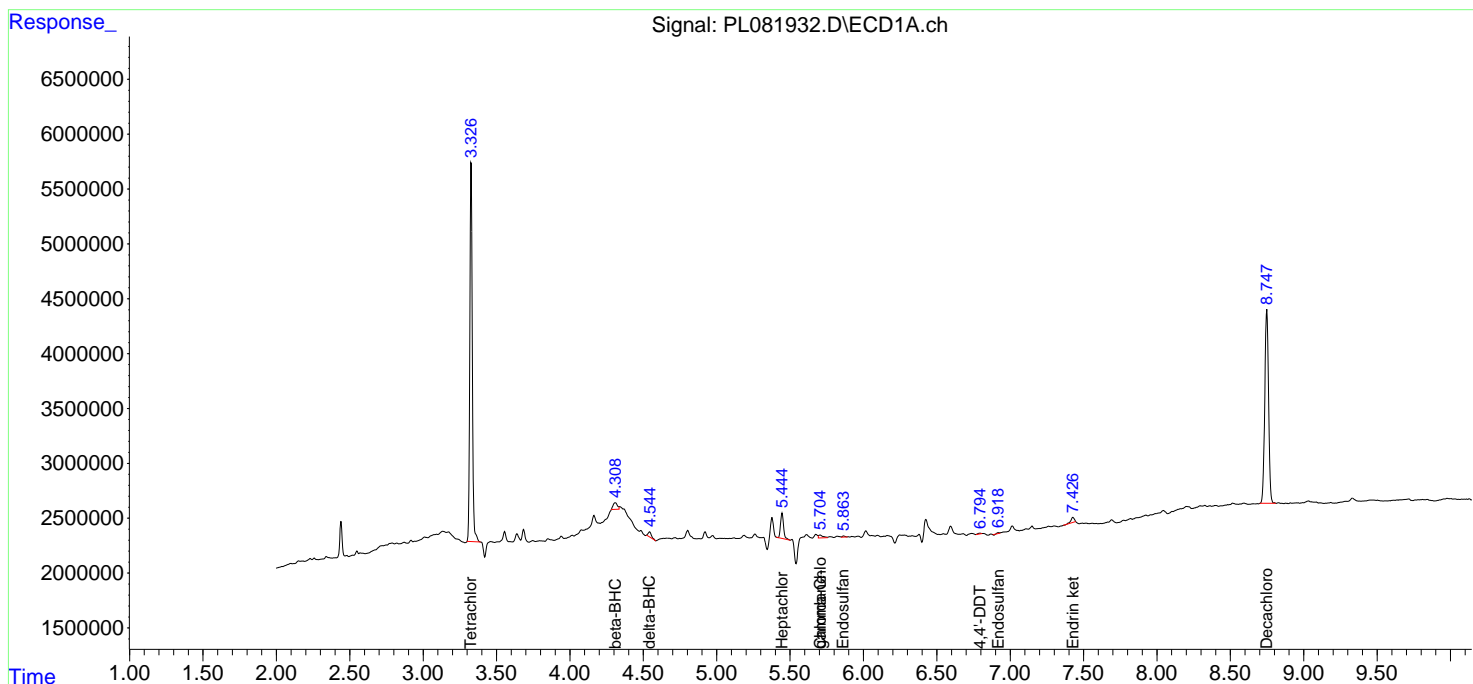
(f)=RT Delta > 1/2 Window (#)=Amounts differ by > 25% (m)=manual int.

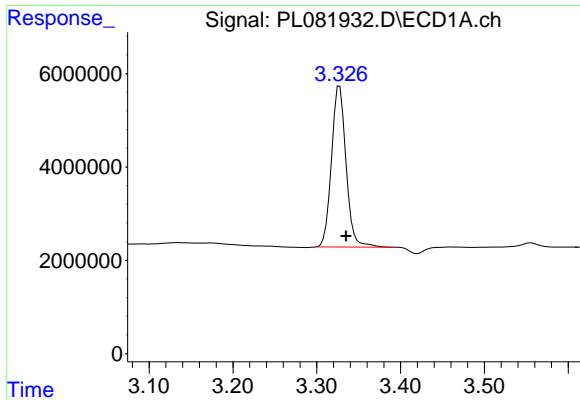
Data Path : Z:\pestpcbsrv\HPCHEM1\ECD_L\Data\PL040723\
 Data File : PL081932.D
 Signal(s) : Signal #1: ECD1A.ch Signal #2: ECD2B.ch
 Acq On : 08 Apr 2023 09:45
 Operator : AR\AJ
 Sample : 02224-13
 Misc :
 ALS Vial : 29 Sample Multiplier: 1

Instrument :
 ECD_L
 ClientSampleId :

Integration File signal 1: autoint1.e
 Integration File signal 2: autoint2.e
 Quant Time: Apr 08 12:45:42 2023
 Quant Method : Z:\pestpcbsrv\HPCHEM1\ECD_L\methods\PL032223.M
 Quant Title : GC Extractables
 QLast Update : Thu Mar 23 01:07:33 2023
 Response via : Initial Calibration
 Integrator: ChemStation

Volume Inj. : 1 µl
 Signal #1 Phase : ZB-MR2 Signal #2 Phase: ZB-MR1
 Signal #1 Info : 30M x 0.32mm x0.2 Signal #2 Info : 30M x 0.32mm x0.5µm

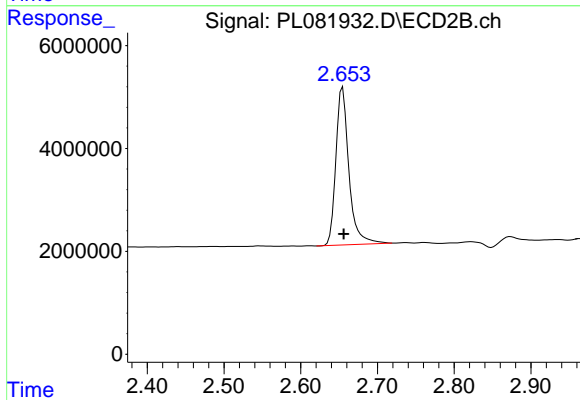




#1 Tetrachloro-m-xylene

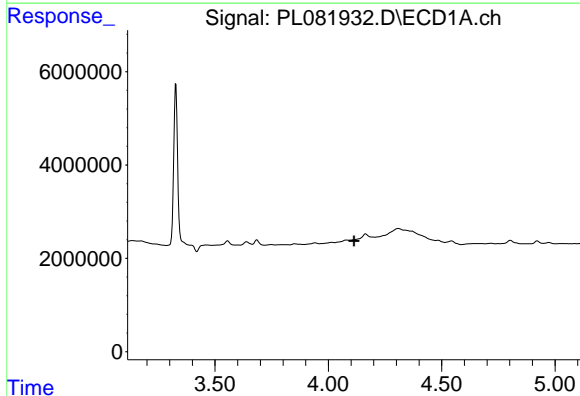
R.T.: 3.327 min
 Delta R.T.: -0.008 min
 Response: 41532102
 Conc: 17.86 ng/ml

Instrument :
 ECD_L
 ClientSampleId :



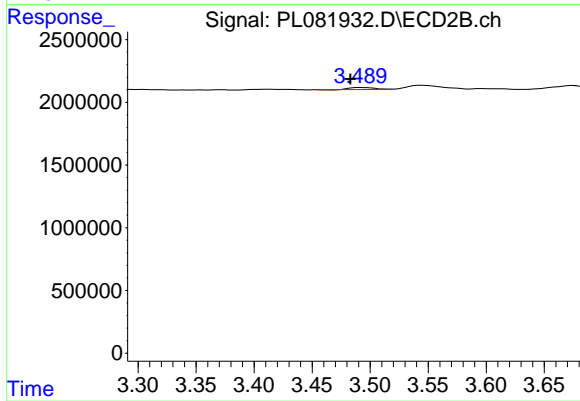
#1 Tetrachloro-m-xylene

R.T.: 2.655 min
 Delta R.T.: -0.001 min
 Response: 36253479
 Conc: 18.16 ng/ml



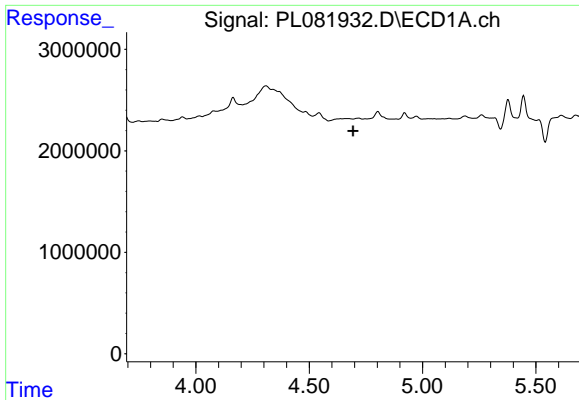
#3 gamma-BHC (Lindane)

R.T.: 0.000 min
 Exp R.T. : 4.113 min
 Response: 0
 Conc: N.D.



#3 gamma-BHC (Lindane)

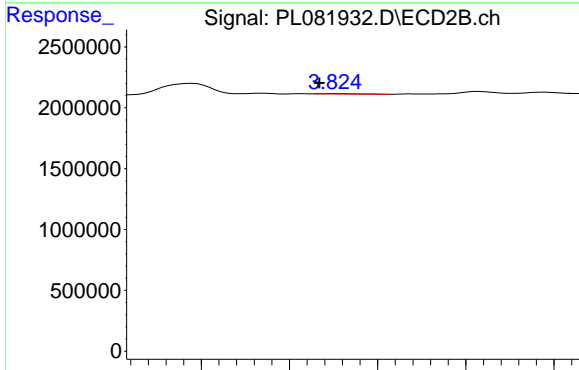
R.T.: 3.491 min
 Delta R.T.: 0.008 min
 Response: 236385
 Conc: 0.08 ng/ml



#4 Heptachlor

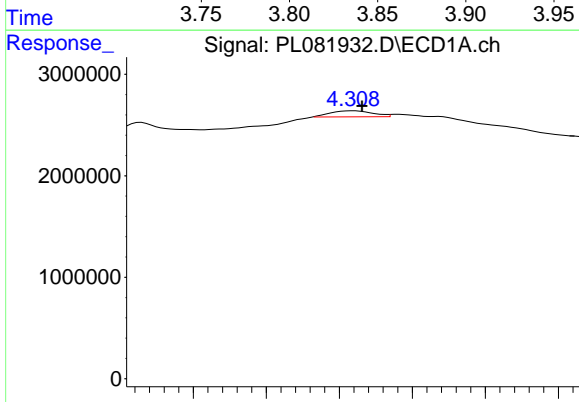
R.T.: 0.000 min
 Exp R.T.: 4.693 min
 Response: 0
 Conc: N.D.

Instrument :
 ECD_L
 ClientSampleId :



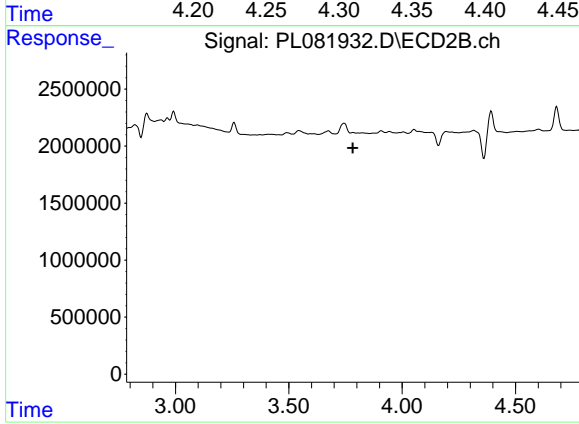
#4 Heptachlor

R.T.: 3.825 min
 Delta R.T.: 0.008 min
 Response: 45566
 Conc: 0.02 ng/ml



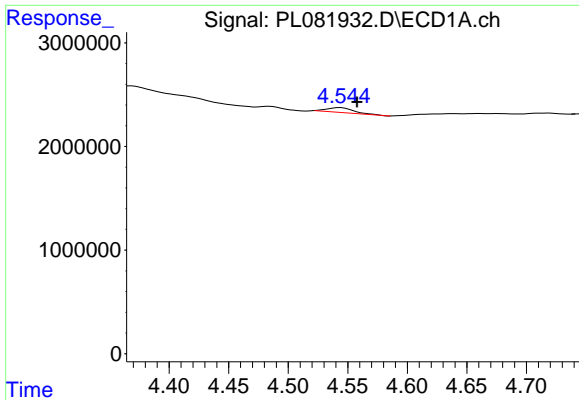
#6 beta-BHC

R.T.: 4.310 min
 Delta R.T.: -0.006 min
 Response: 1221025
 Conc: 0.81 ng/ml



#6 beta-BHC

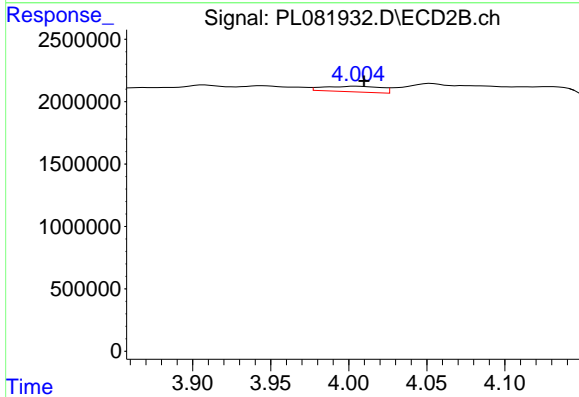
R.T.: 0.000 min
 Exp R.T.: 3.782 min
 Response: 0
 Conc: N.D.



#7 delta-BHC

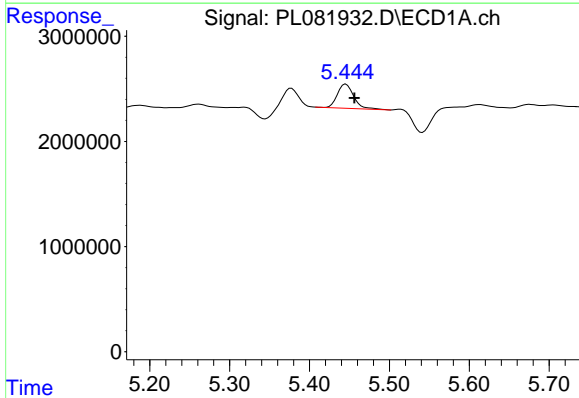
R.T.: 4.544 min
 Delta R.T.: -0.014 min
 Response: 751711
 Conc: 0.25 ng/ml

Instrument :
 ECD_L
 ClientSampleId :



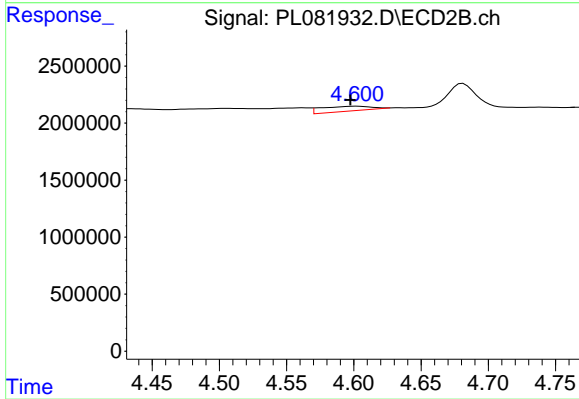
#7 delta-BHC

R.T.: 4.005 min
 Delta R.T.: -0.005 min
 Response: 1132764
 Conc: 0.44 ng/ml



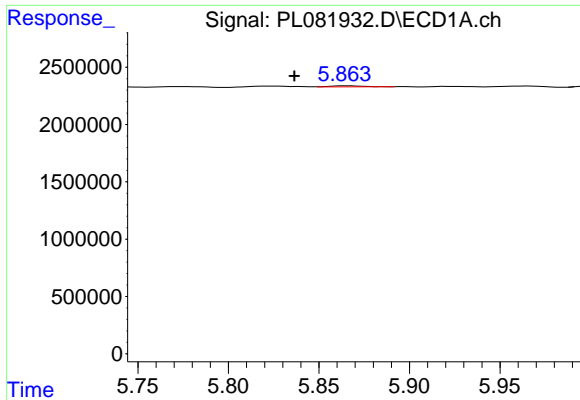
#8 Heptachlor epoxide

R.T.: 5.446 min
 Delta R.T.: -0.011 min
 Response: 3281004
 Conc: 1.21 ng/ml



#8 Heptachlor epoxide

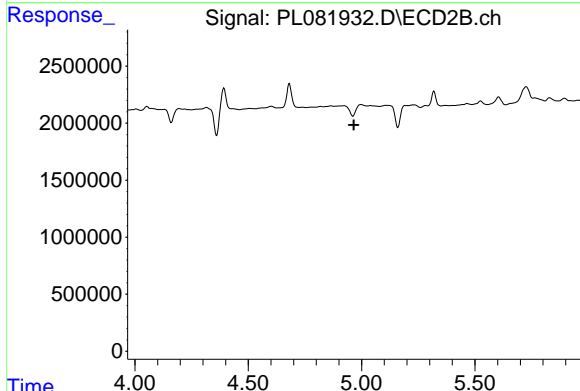
R.T.: 4.602 min
 Delta R.T.: 0.004 min
 Response: 1094543
 Conc: 0.45 ng/ml



#9 Endosulfan I

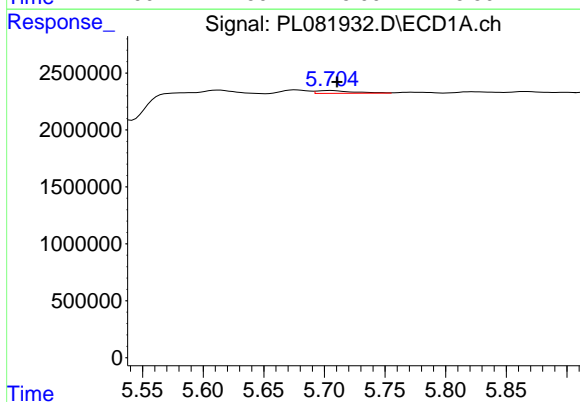
R.T.: 5.865 min
 Delta R.T.: 0.029 min
 Response: 131716
 Conc: 0.05 ng/ml

Instrument :
 ECD_L
 ClientSampleId :



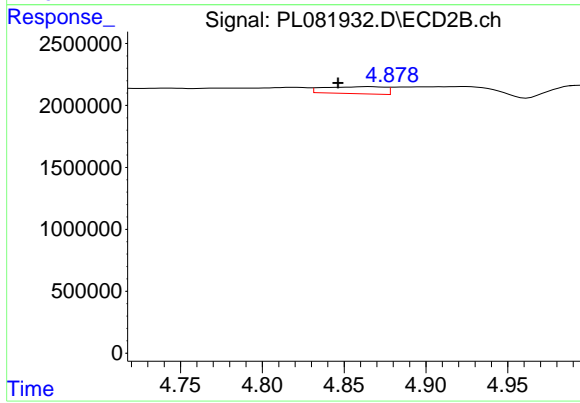
#9 Endosulfan I

R.T.: 0.000 min
 Exp R.T. : 4.966 min
 Response: 0
 Conc: N.D.



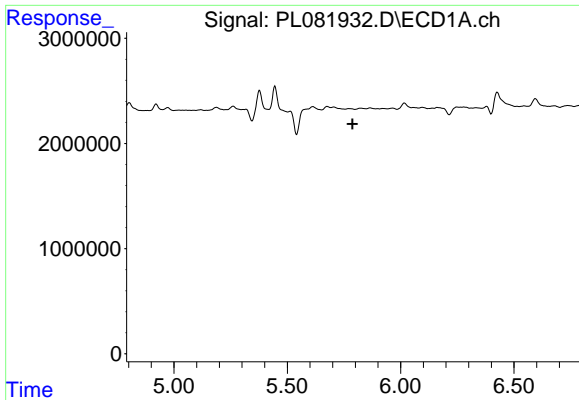
#10 gamma-Chlordane

R.T.: 5.705 min
 Delta R.T.: -0.005 min
 Response: 525847
 Conc: 0.20 ng/ml



#10 gamma-Chlordane

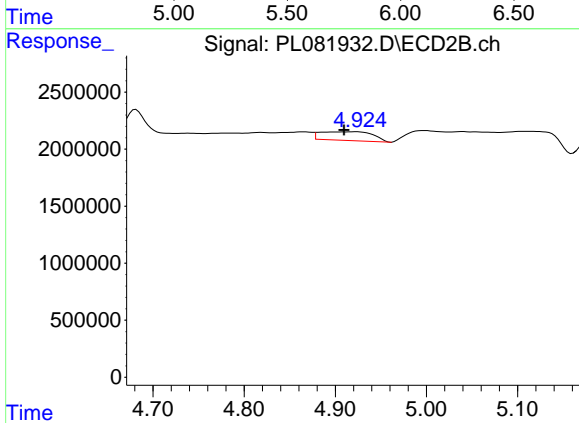
R.T.: 4.866 min
 Delta R.T.: 0.019 min
 Response: 1462396
 Conc: 0.60 ng/ml



#11 alpha-Chlordane

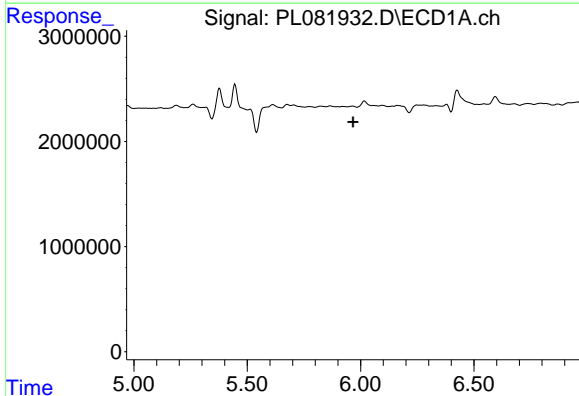
R.T.: 0.000 min
 Exp R.T.: 5.788 min
 Response: 0
 Conc: N.D.

Instrument :
 ECD_L
 ClientSampleId :



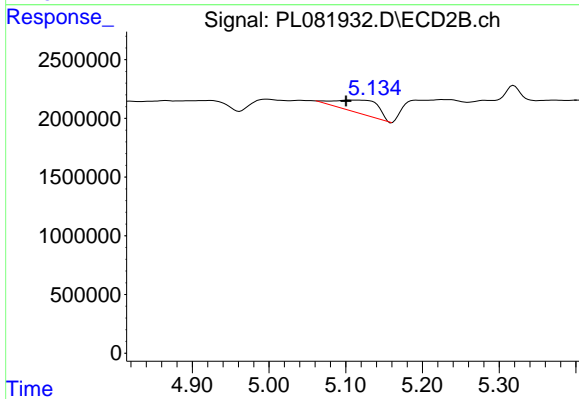
#11 alpha-Chlordane

R.T.: 4.924 min
 Delta R.T.: 0.014 min
 Response: 3057951
 Conc: 1.26 ng/ml



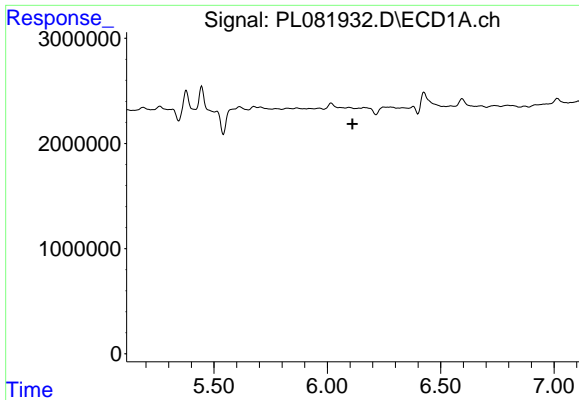
#12 4,4'-DDE

R.T.: 0.000 min
 Exp R.T.: 5.967 min
 Response: 0
 Conc: N.D.



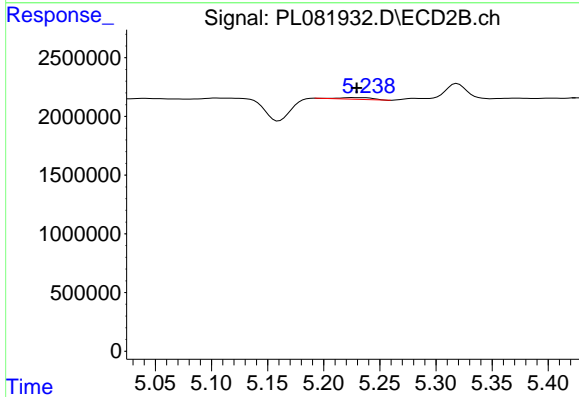
#12 4,4'-DDE

R.T.: 5.105 min
 Delta R.T.: 0.005 min
 Response: 4252106
 Conc: 2.16 ng/ml

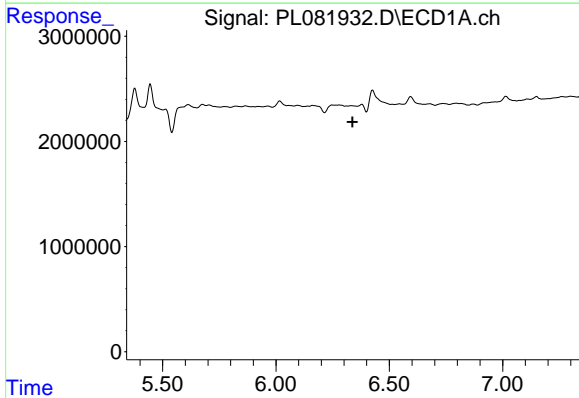


#13 Dieldrin
 R.T.: 0.000 min
 Exp R.T.: 6.111 min
 Response: 0
 Conc: N.D.

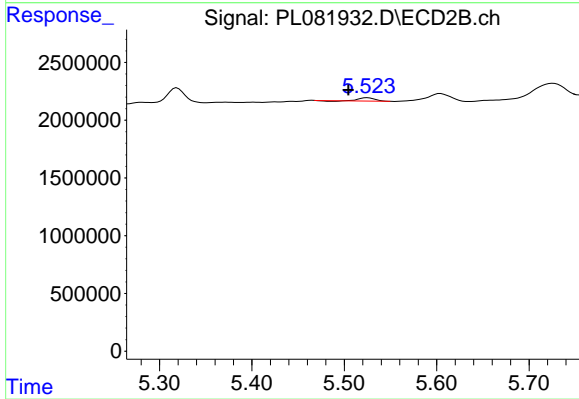
Instrument :
 ECD_L
 ClientSampleId :



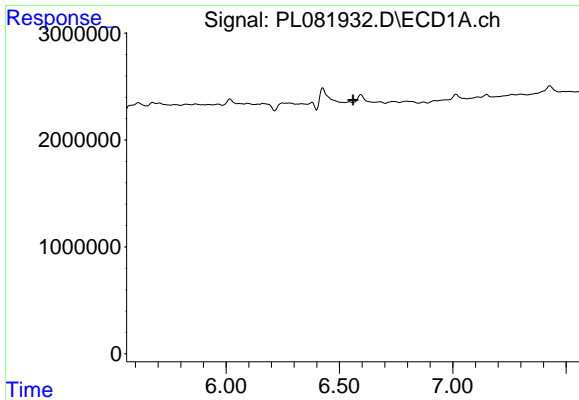
#13 Dieldrin
 R.T.: 5.226 min
 Delta R.T.: -0.004 min
 Response: 316574
 Conc: 0.14 ng/ml



#14 Endrin
 R.T.: 0.000 min
 Exp R.T.: 6.338 min
 Response: 0
 Conc: N.D.



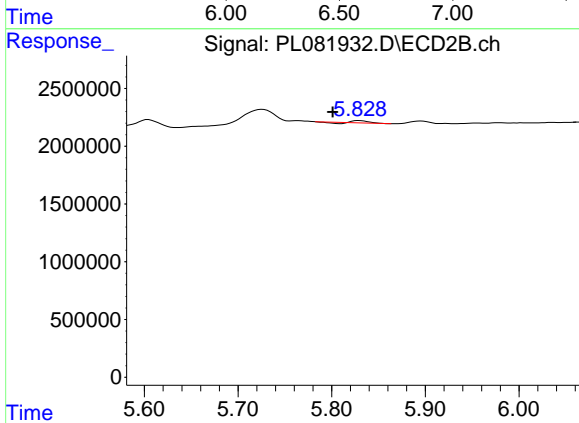
#14 Endrin
 R.T.: 5.525 min
 Delta R.T.: 0.020 min
 Response: 322185
 Conc: 0.16 ng/ml



#15 Endosulfan II

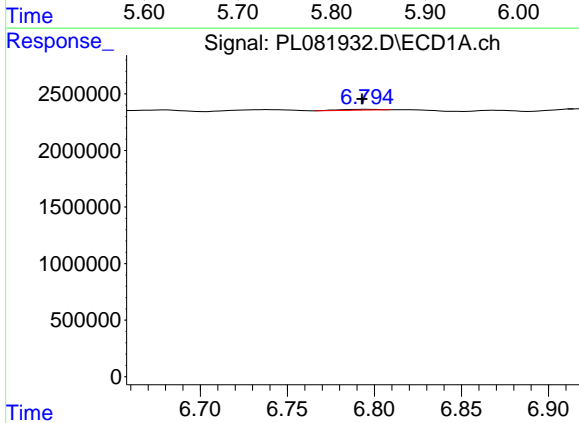
R.T.: 0.000 min
 Exp R.T.: 6.560 min
 Response: 0
 Conc: N.D.

Instrument :
 ECD_L
 ClientSampleId :



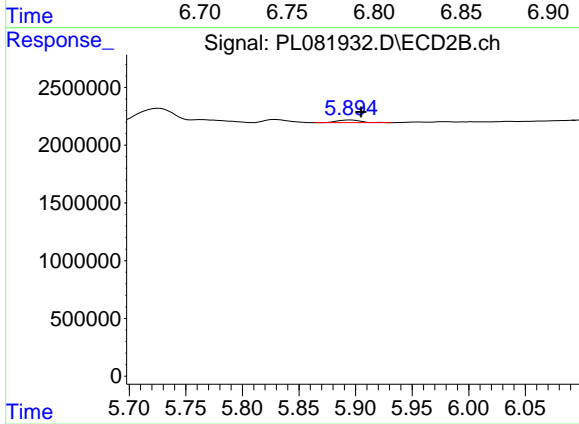
#15 Endosulfan II

R.T.: 5.829 min
 Delta R.T.: 0.028 min
 Response: 170429
 Conc: 0.09 ng/ml



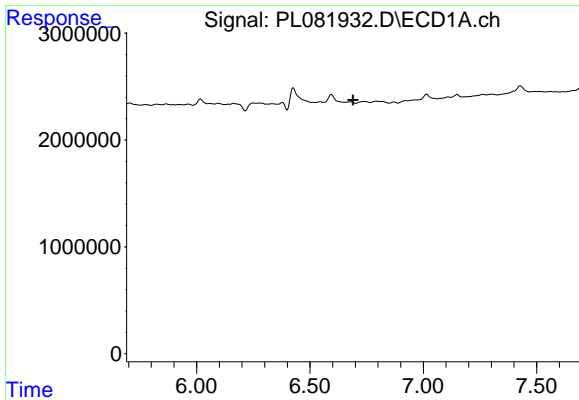
#17 4,4'-DDT

R.T.: 6.796 min
 Delta R.T.: 0.003 min
 Response: 111741
 Conc: 0.06 ng/ml



#17 4,4'-DDT

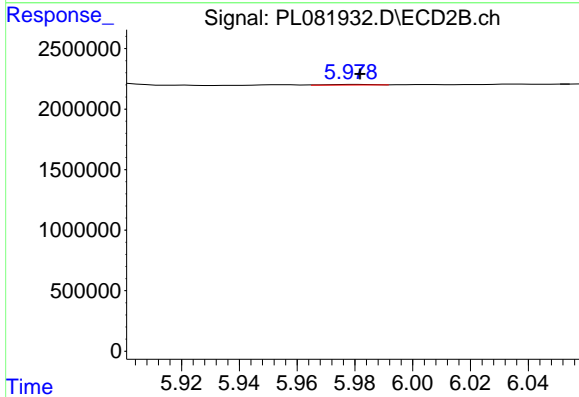
R.T.: 5.895 min
 Delta R.T.: -0.010 min
 Response: 333443
 Conc: 0.19 ng/ml



#18 Endrin aldehyde

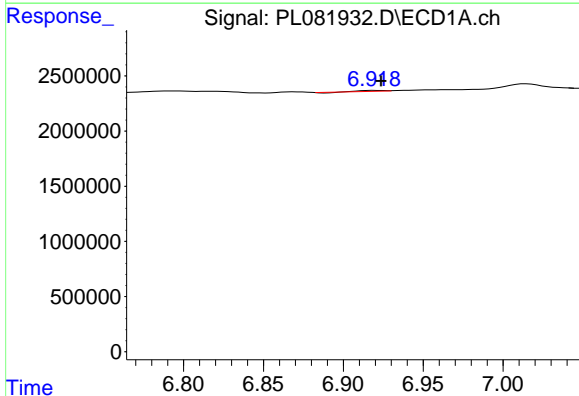
R.T.: 0.000 min
 Exp R.T.: 6.690 min
 Response: 0
 Conc: N.D.

Instrument :
 ECD_L
 ClientSampleId :



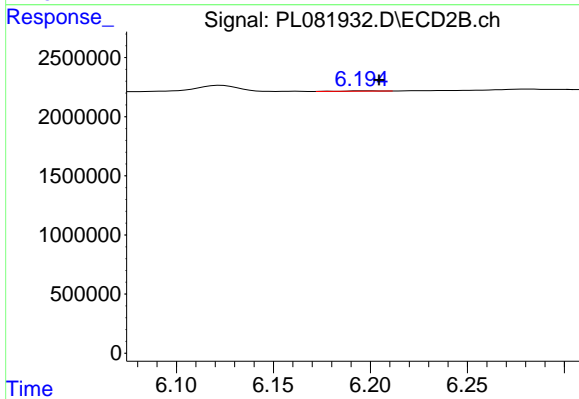
#18 Endrin aldehyde

R.T.: 5.980 min
 Delta R.T.: -0.002 min
 Response: 47478
 Conc: 0.03 ng/ml



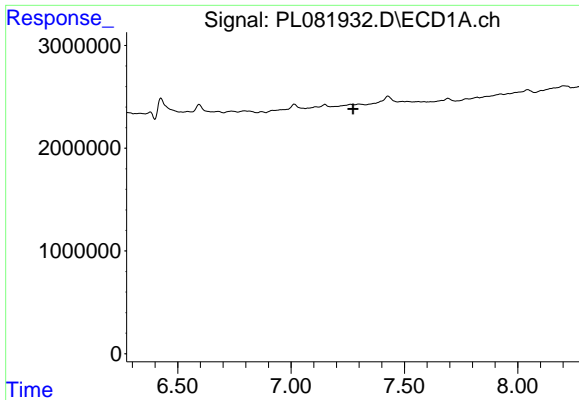
#19 Endosulfan Sulfate

R.T.: 6.919 min
 Delta R.T.: -0.005 min
 Response: 58341
 Conc: 0.03 ng/ml



#19 Endosulfan Sulfate

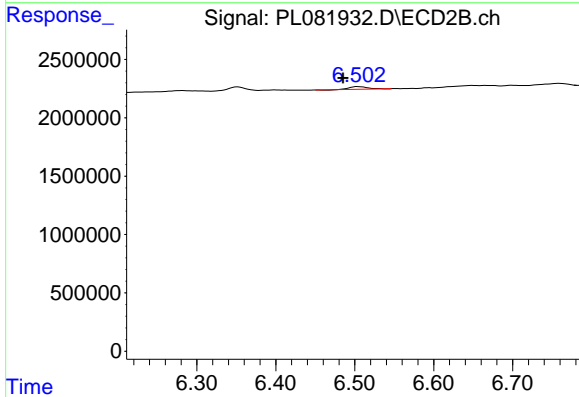
R.T.: 6.197 min
 Delta R.T.: -0.008 min
 Response: 34224
 Conc: 0.02 ng/ml



#20 Methoxychlor

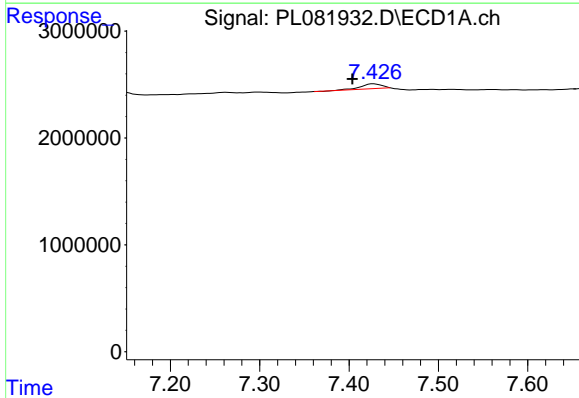
R.T.: 0.000 min
 Exp R.T.: 7.274 min
 Response: 0
 Conc: N.D.

Instrument :
 ECD_L
 ClientSampleId :



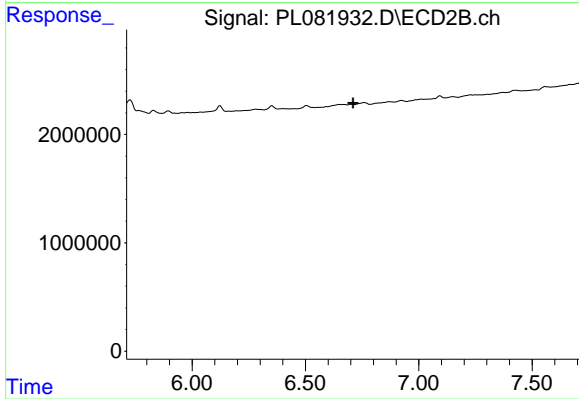
#20 Methoxychlor

R.T.: 6.504 min
 Delta R.T.: 0.019 min
 Response: 344513
 Conc: 0.35 ng/ml



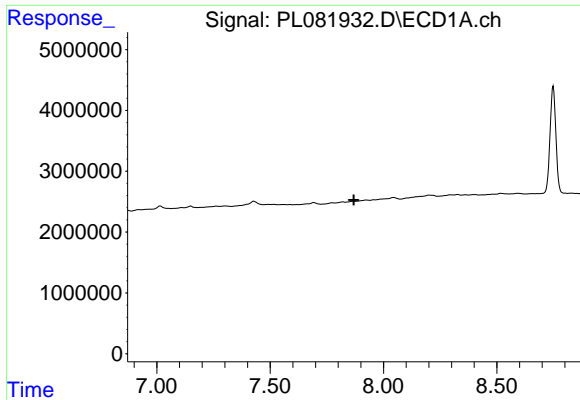
#21 Endrin ketone

R.T.: 7.427 min
 Delta R.T.: 0.023 min
 Response: 801922
 Conc: 0.38 ng/ml



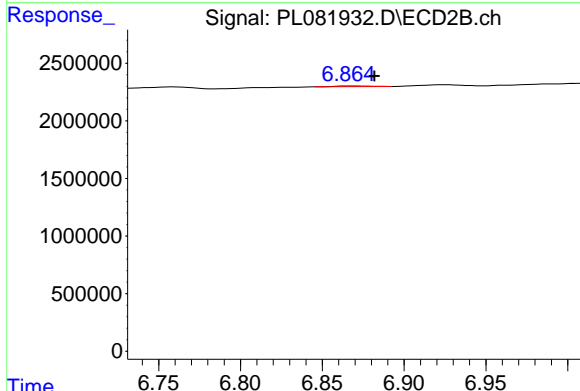
#21 Endrin ketone

R.T.: 0.000 min
 Exp R.T.: 6.710 min
 Response: 0
 Conc: N.D.

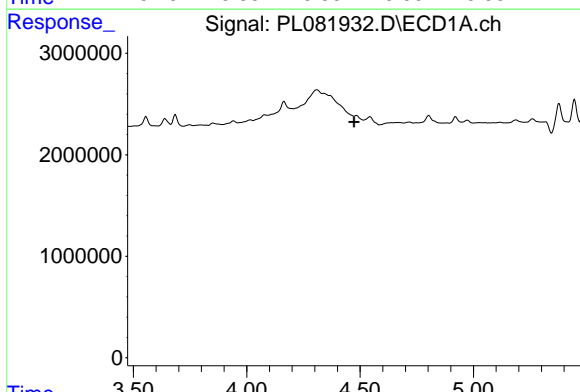


#22 Mirex
 R.T.: 0.000 min
 Exp R.T.: 7.869 min
 Response: 0
 Conc: N.D.

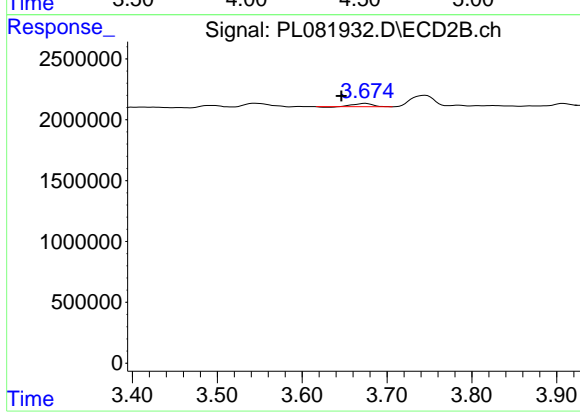
Instrument :
 ECD_L
 ClientSampleId :



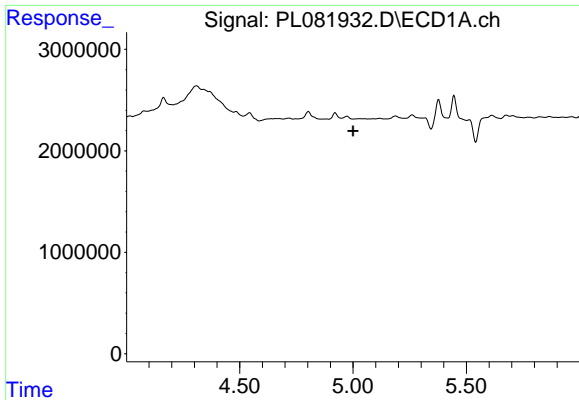
#22 Mirex
 R.T.: 6.867 min
 Delta R.T.: -0.015 min
 Response: 77534
 Conc: 0.04 ng/ml



#23 Chlordane-1
 R.T.: 0.000 min
 Exp R.T.: 4.473 min
 Response: 0
 Conc: N.D.



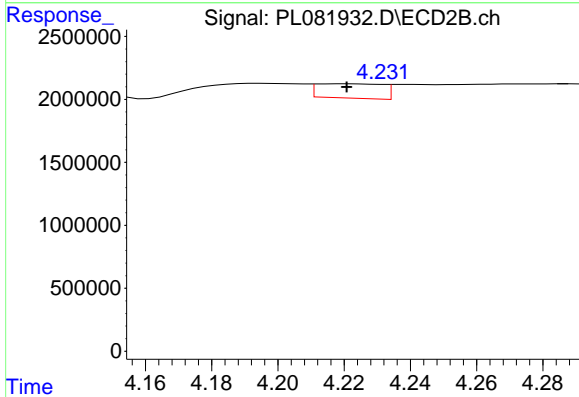
#23 Chlordane-1
 R.T.: 3.675 min
 Delta R.T.: 0.028 min
 Response: 400491
 Conc: 5.20 ng/ml



#24 Chlordane-2

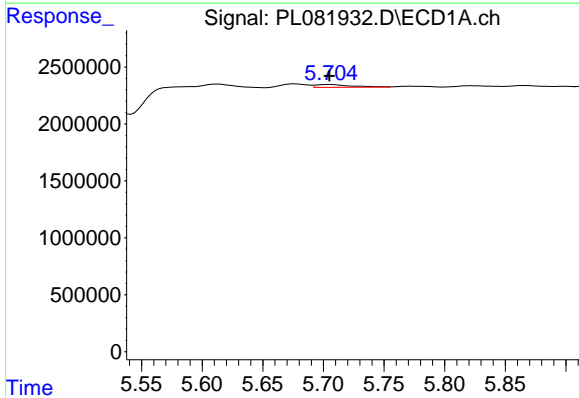
R.T.: 0.000 min
 Exp R.T.: 5.000 min
 Response: 0
 Conc: N.D.

Instrument :
 ECD_L
 ClientSampleId :



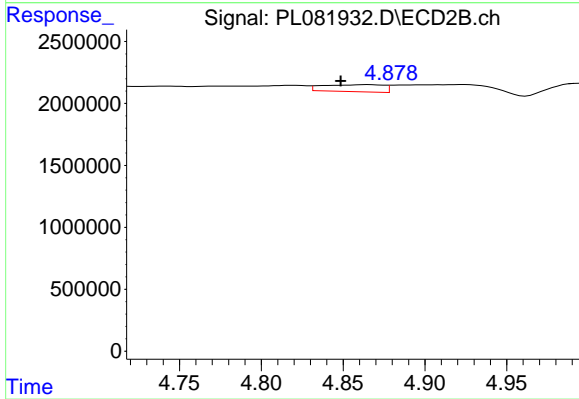
#24 Chlordane-2

R.T.: 4.221 min
 Delta R.T.: 0.000 min
 Response: 1568588
 Conc: 16.79 ng/ml



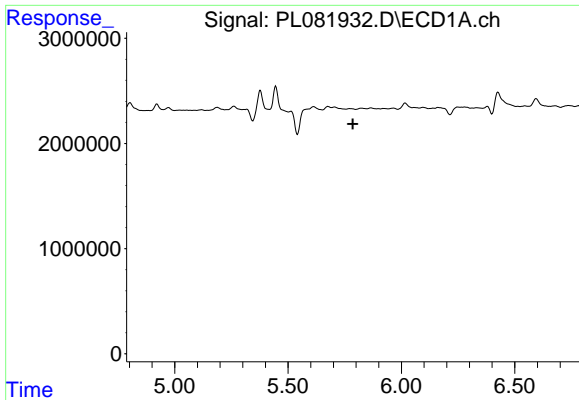
#25 Chlordane-3

R.T.: 5.705 min
 Delta R.T.: 0.000 min
 Response: 525847
 Conc: 1.33 ng/ml



#25 Chlordane-3

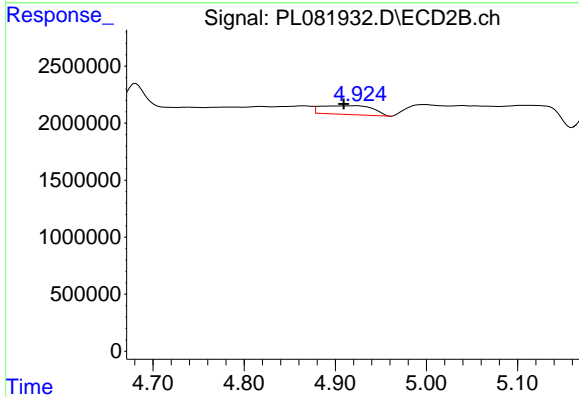
R.T.: 4.866 min
 Delta R.T.: 0.017 min
 Response: 1462396
 Conc: 5.81 ng/ml



#26 Chlordane-4

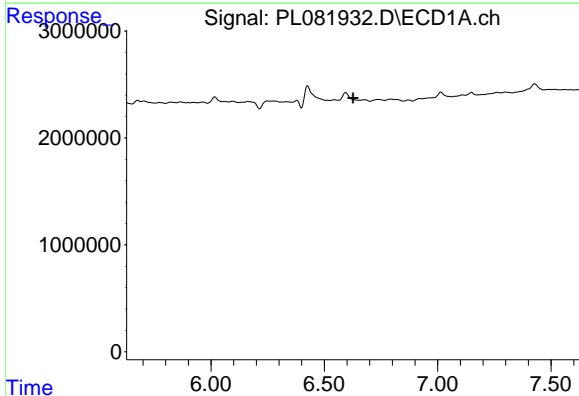
R.T.: 0.000 min
 Exp R.T.: 5.786 min
 Response: 0
 Conc: N.D.

Instrument :
 ECD_L
 ClientSampleId :



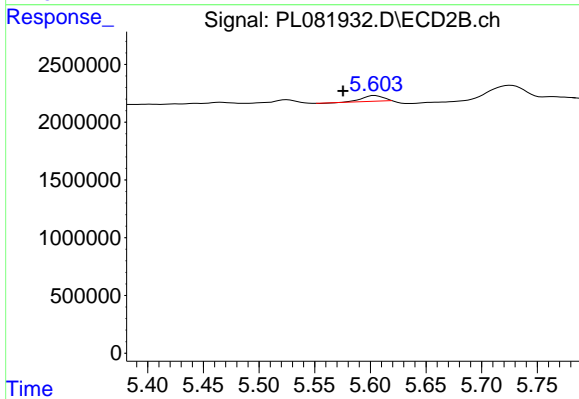
#26 Chlordane-4

R.T.: 4.924 min
 Delta R.T.: 0.014 min
 Response: 3057951
 Conc: 11.67 ng/ml



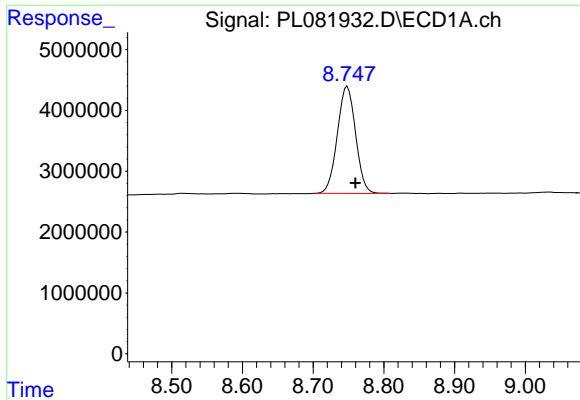
#27 Chlordane-5

R.T.: 0.000 min
 Exp R.T.: 6.627 min
 Response: 0
 Conc: N.D.



#27 Chlordane-5

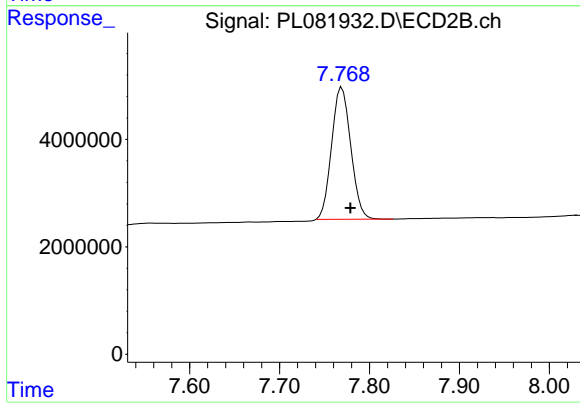
R.T.: 5.604 min
 Delta R.T.: 0.029 min
 Response: 667606
 Conc: 10.00 ng/ml



#28 Decachlorobiphenyl

R.T.: 8.749 min
Delta R.T.: -0.011 min
Response: 31605368
Conc: 17.66 ng/ml

Instrument :
ECD_L
ClientSampleId :



#28 Decachlorobiphenyl

R.T.: 7.769 min
Delta R.T.: -0.009 min
Response: 36448461
Conc: 18.38 ng/ml