

Data Path : Z:\pestpcbsrv\HPCHEM1\ECD_L\Data\PL060322\
 Data File : PL075504.D
 Signal(s) : Signal #1: ECD1A.ch Signal #2: ECD2B.ch
 Acq On : 04 Jun 2022 04:47
 Operator : AR\AJ
 Sample : N3139-02
 Misc :
 ALS Vial : 39 Sample Multiplier: 1

Instrument :
 ECD_L
 ClientSampleId :

Integration File signal 1: autoint1.e
 Integration File signal 2: autoint2.e
 Quant Time: Jun 04 05:18:41 2022
 Quant Method : Z:\pestpcbsrv\HPCHEM1\ECD_L\methods\PL052822.M
 Quant Title : GC Extractables
 QLast Update : Wed Jun 01 10:19:11 2022
 Response via : Initial Calibration
 Integrator: ChemStation

Volume Inj. : 1 µl
 Signal #1 Phase : ZB-MR2 Signal #2 Phase: ZB-MR1
 Signal #1 Info : 30M x 0.32mm x0.2 Signal #2 Info : 30M x 0.32mm x0.5µm

Compound	RT#1	RT#2	Resp#1	Resp#2	ng/ml	ng/ml

System Monitoring Compounds						
1) SA Tetrachlo...	5.643	4.642	10389013	26847889	17.676	16.948
28) SA Decachlor...	11.638	10.387	7317230	15164842	13.647	11.051
Target Compounds						
2) A alpha-BHC	6.201f	0.000	173862	0	0.211	N.D. #
3) MA gamma-BHC...	0.000	5.761	0	270055	N.D.	0.129 #
5) MB Aldrin	0.000	6.493	0	859101	N.D.	0.445 #
7) B delta-BHC	0.000	6.410	0	188174	N.D.	0.088 #
8) B Heptachlo...	0.000	7.078	0	330212	N.D.	0.181 #
9) A Endosulfan I	0.000	7.472	0	604648	N.D.	0.358 #
10) B gamma-Chl...	0.000	7.341	0	496985	N.D.	0.270 #
11) B alpha-Chl...	0.000	7.438f	0	395678	N.D.	0.217 #
13) MA Dieldrin	0.000	7.770	0	649840	N.D.	0.375 #
14) MA Endrin	0.000	8.073f	0	145737	N.D.	0.094 #
15) B Endosulfa...	9.306	8.374	1694243	828686	3.002	0.526 #
17) MA 4,4'-DDT	0.000	8.487	0	214822	N.D.	0.150 #
18) B Endrin al...	9.432	0.000	166058	0	0.378	N.D. #
19) B Endosulfa...	9.658	0.000	159231	0	0.286	N.D. #
20) A Methoxychlor	0.000	9.092f	0	195405	N.D.	0.241 #
25) Chlordane-3	0.000	7.341	0	496985	N.D.	2.816 #
26) Chlordane-4	0.000	7.438f	0	395678	N.D.	2.095 #

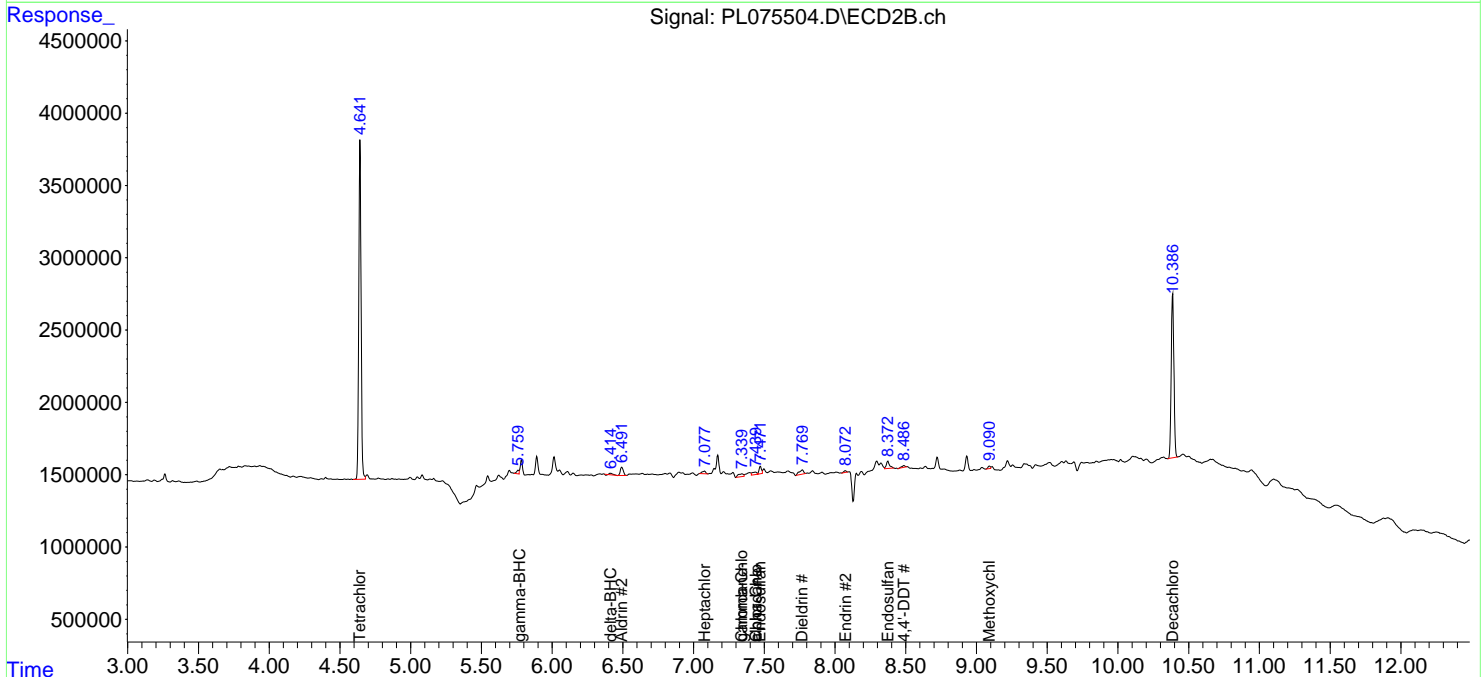
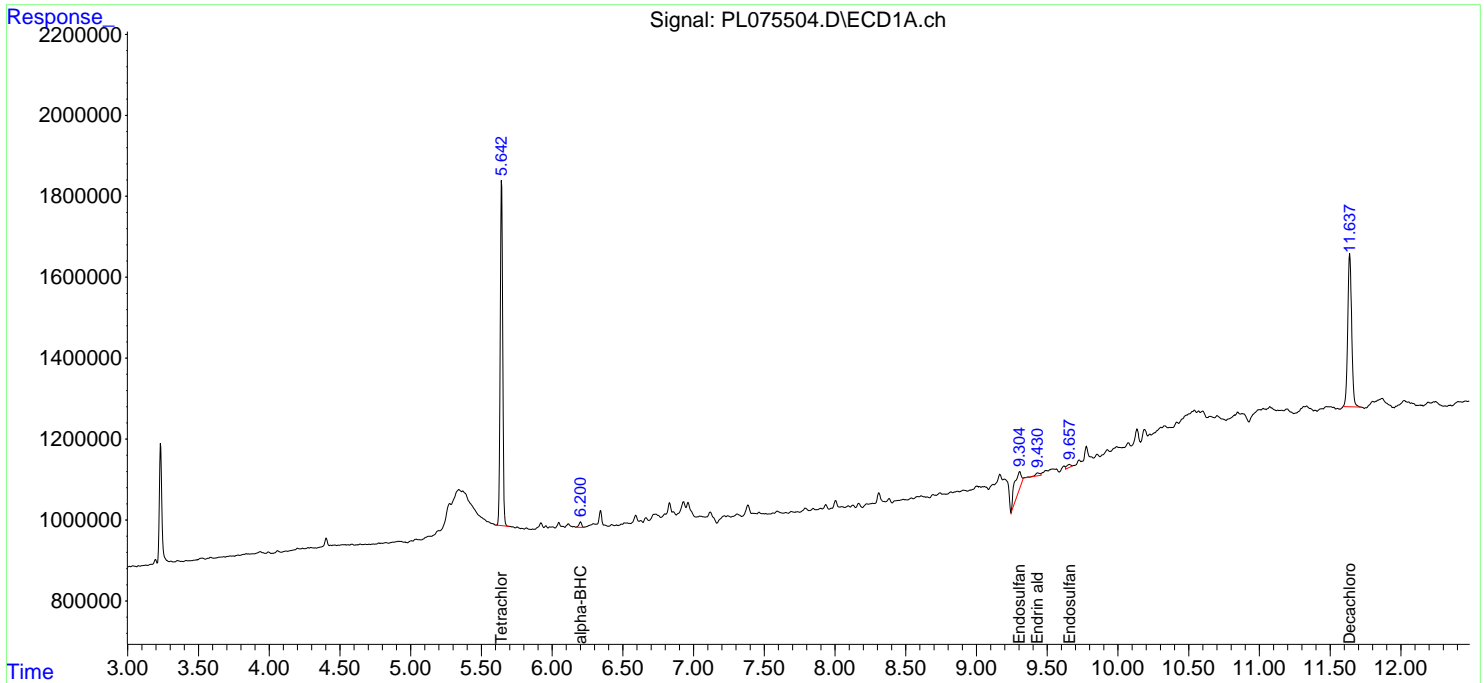
(f)=RT Delta > 1/2 Window (#)=Amounts differ by > 25% (m)=manual int.

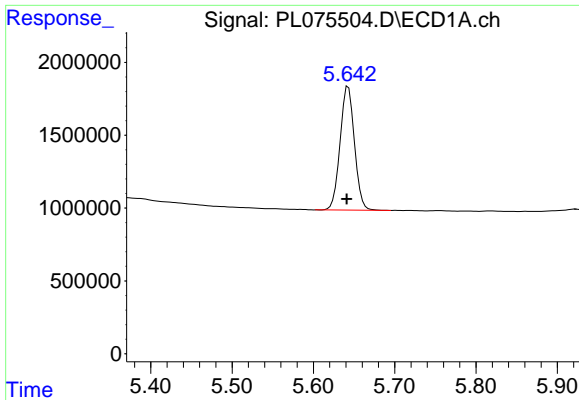
Data Path : Z:\pestpcbsrv\HPCHEM1\ECD_L\Data\PL060322\
 Data File : PL075504.D
 Signal(s) : Signal #1: ECD1A.ch Signal #2: ECD2B.ch
 Acq On : 04 Jun 2022 04:47
 Operator : AR\AJ
 Sample : N3139-02
 Misc :
 ALS Vial : 39 Sample Multiplier: 1

Instrument :
 ECD_L
 ClientSampleId :

Integration File signal 1: autoint1.e
 Integration File signal 2: autoint2.e
 Quant Time: Jun 04 05:18:41 2022
 Quant Method : Z:\pestpcbsrv\HPCHEM1\ECD_L\methods\PL052822.M
 Quant Title : GC Extractables
 QLast Update : Wed Jun 01 10:19:11 2022
 Response via : Initial Calibration
 Integrator: ChemStation

Volume Inj. : 1 µl
 Signal #1 Phase : ZB-MR2 Signal #2 Phase: ZB-MR1
 Signal #1 Info : 30M x 0.32mm x0.2 Signal #2 Info : 30M x 0.32mm x0.5µm

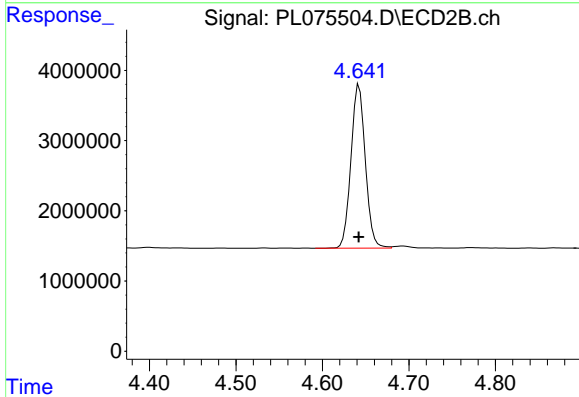




#1 Tetrachloro-m-xylene

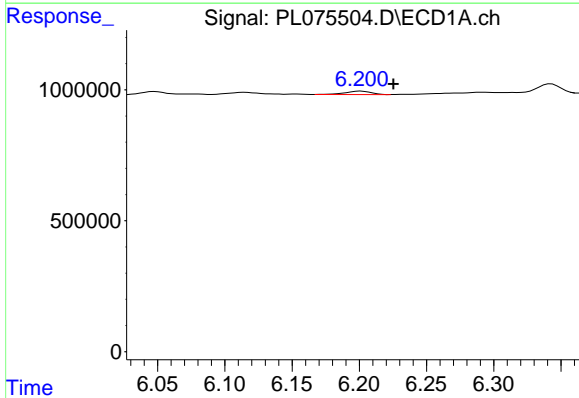
R.T.: 5.643 min
 Delta R.T.: 0.002 min
 Response: 10389013
 Conc: 17.68 ng/ml

Instrument :
 ECD_L
 ClientSampleId :



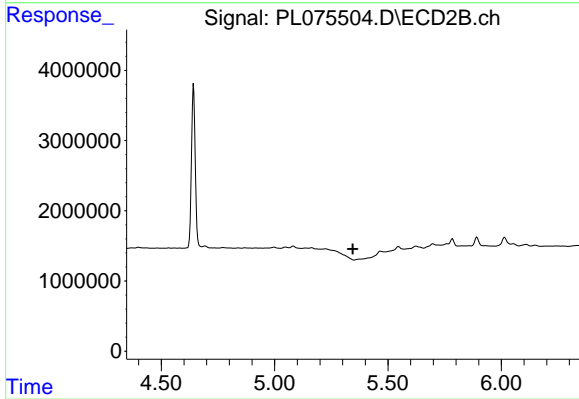
#1 Tetrachloro-m-xylene

R.T.: 4.642 min
 Delta R.T.: 0.000 min
 Response: 26847889
 Conc: 16.95 ng/ml



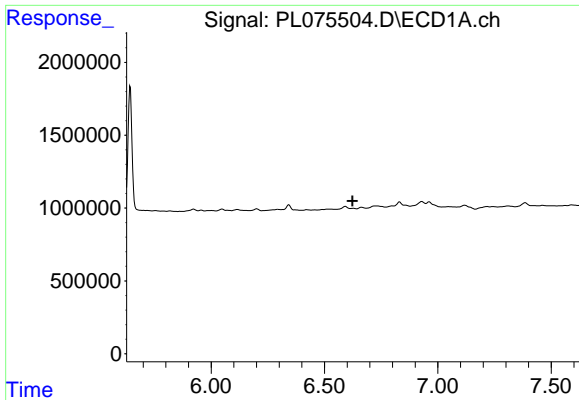
#2 alpha-BHC

R.T.: 6.201 min
 Delta R.T.: -0.024 min
 Response: 173862
 Conc: 0.21 ng/ml



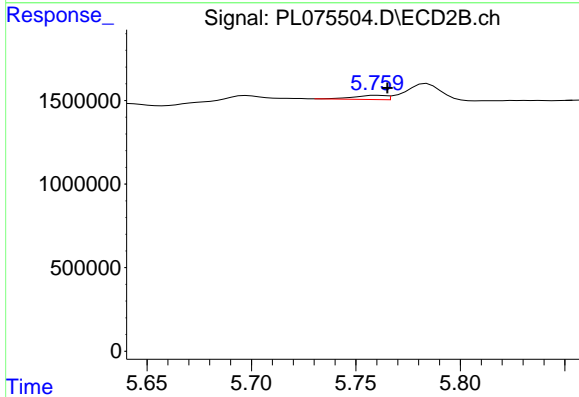
#2 alpha-BHC

R.T.: 0.000 min
 Exp R.T. : 5.345 min
 Response: 0
 Conc: N.D.

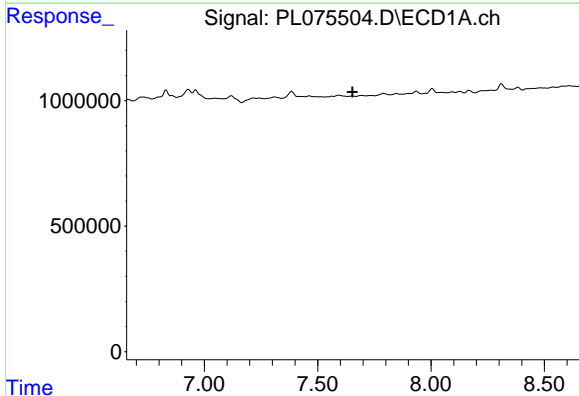


#3 gamma-BHC (Lindane)
 R.T.: 0.000 min
 Exp R.T. : 6.624 min
 Response: 0
 Conc: N.D.

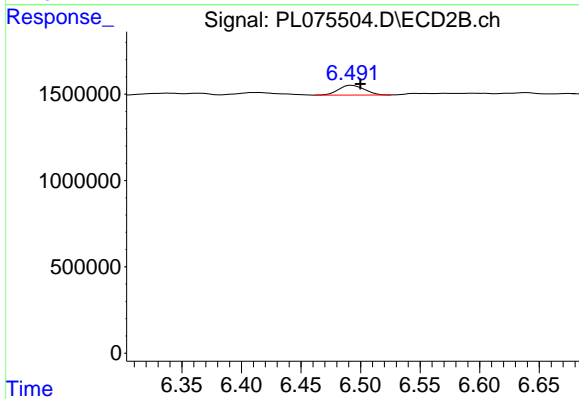
Instrument :
 ECD_L
 ClientSampleId :



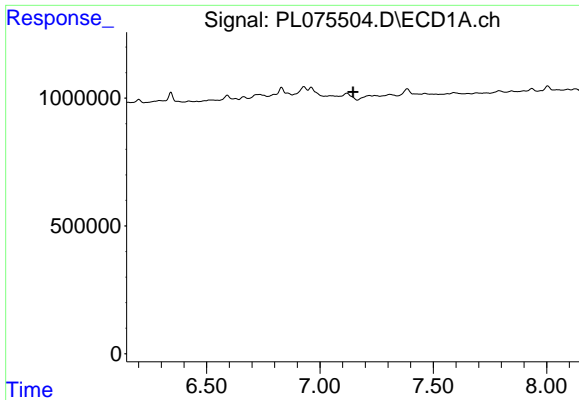
#3 gamma-BHC (Lindane)
 R.T.: 5.761 min
 Delta R.T.: -0.004 min
 Response: 270055
 Conc: 0.13 ng/ml



#5 Aldrin
 R.T.: 0.000 min
 Exp R.T. : 7.654 min
 Response: 0
 Conc: N.D.



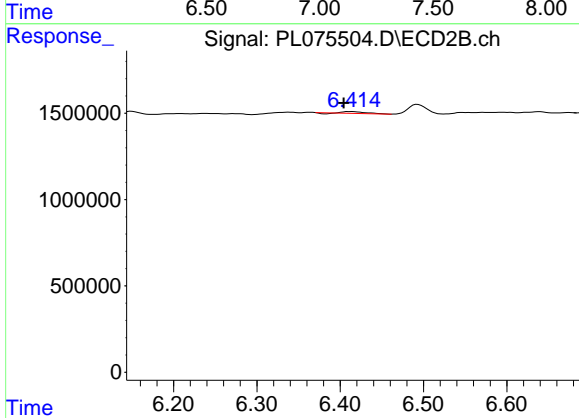
#5 Aldrin
 R.T.: 6.493 min
 Delta R.T.: -0.007 min
 Response: 859101
 Conc: 0.45 ng/ml



#7 delta-BHC

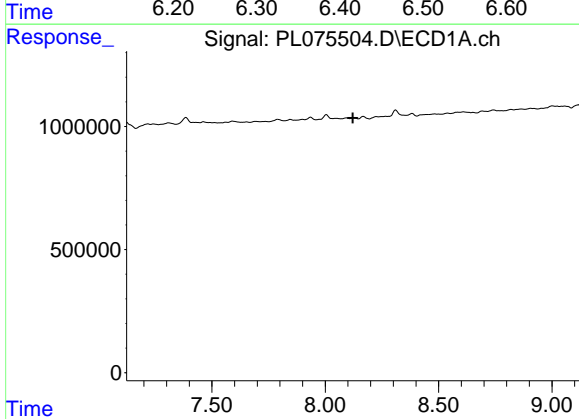
R.T.: 0.000 min
 Exp R.T.: 7.146 min
 Response: 0
 Conc: N.D.

Instrument :
 ECD_L
 ClientSampleId :



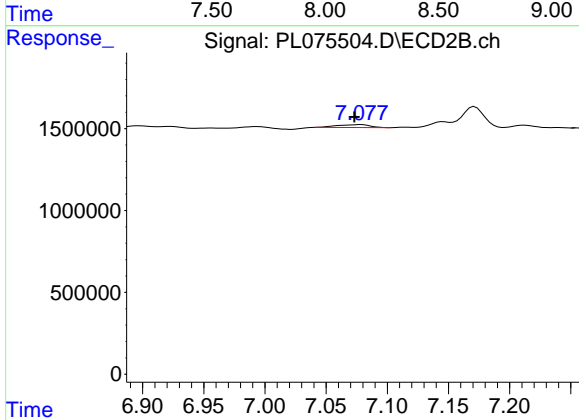
#7 delta-BHC

R.T.: 6.410 min
 Delta R.T.: 0.006 min
 Response: 188174
 Conc: 0.09 ng/ml



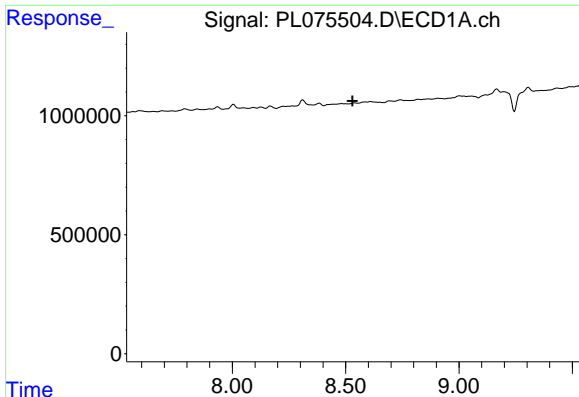
#8 Heptachlor epoxide

R.T.: 0.000 min
 Exp R.T.: 8.122 min
 Response: 0
 Conc: N.D.



#8 Heptachlor epoxide

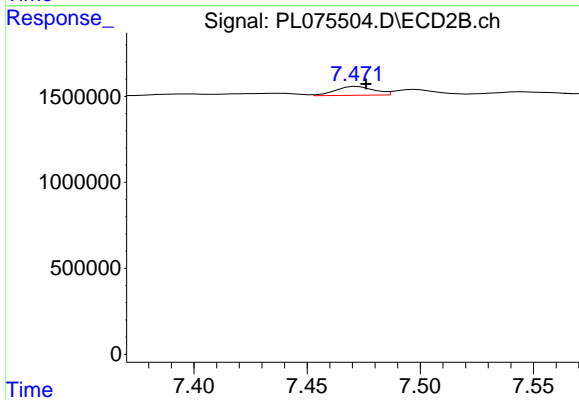
R.T.: 7.078 min
 Delta R.T.: 0.005 min
 Response: 330212
 Conc: 0.18 ng/ml



#9 Endosulfan I

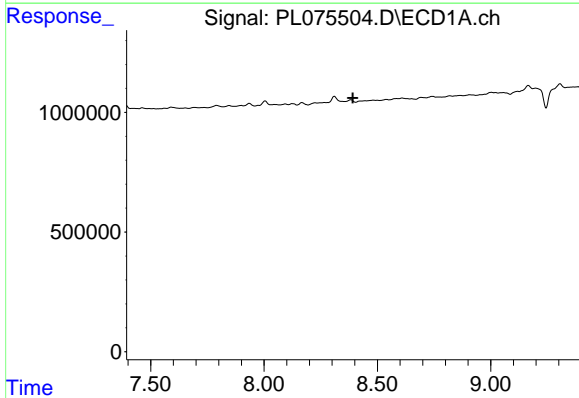
R.T.: 0.000 min
 Exp R.T.: 8.530 min
 Response: 0
 Conc: N.D.

Instrument :
 ECD_L
 ClientSampleId :



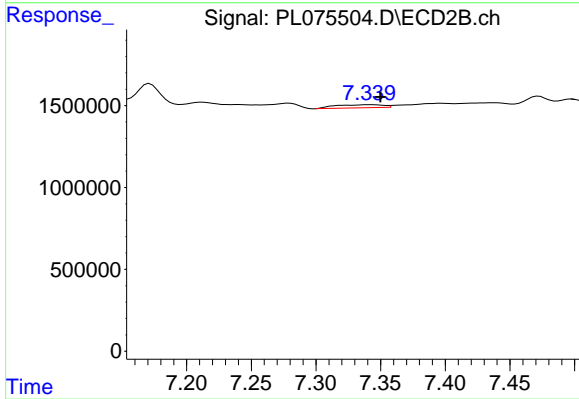
#9 Endosulfan I

R.T.: 7.472 min
 Delta R.T.: -0.004 min
 Response: 604648
 Conc: 0.36 ng/ml



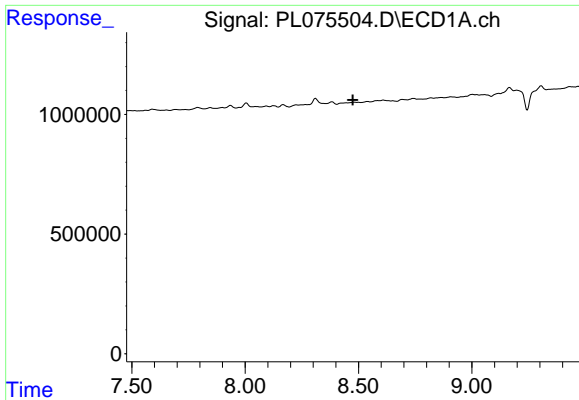
#10 gamma-Chlordane

R.T.: 0.000 min
 Exp R.T.: 8.392 min
 Response: 0
 Conc: N.D.



#10 gamma-Chlordane

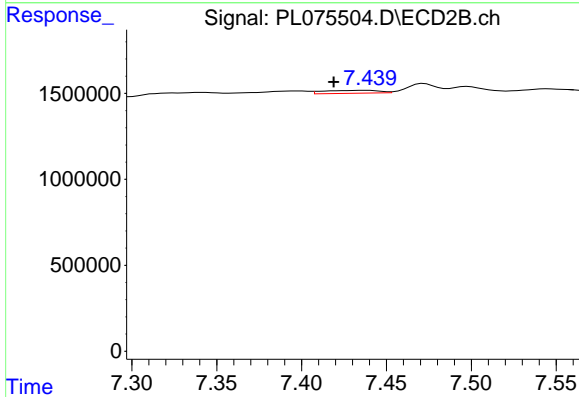
R.T.: 7.341 min
 Delta R.T.: -0.009 min
 Response: 496985
 Conc: 0.27 ng/ml



#11 alpha-Chlordane

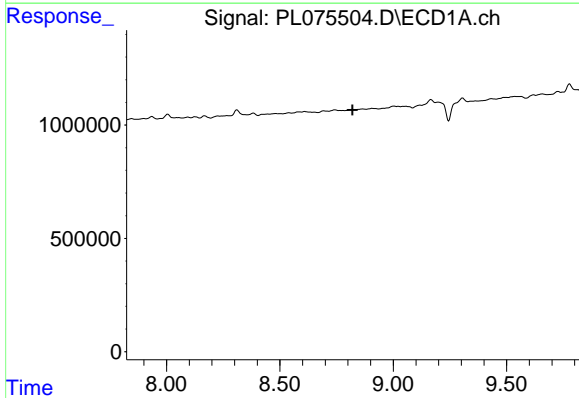
R.T.: 0.000 min
 Exp R.T.: 8.474 min
 Response: 0
 Conc: N.D.

Instrument :
 ECD_L
 ClientSampleId :



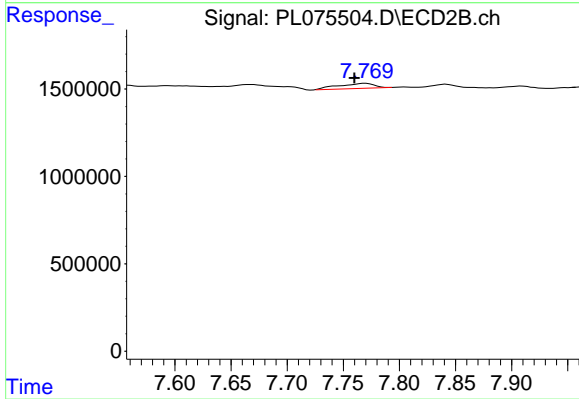
#11 alpha-Chlordane

R.T.: 7.438 min
 Delta R.T.: 0.019 min
 Response: 395678
 Conc: 0.22 ng/ml



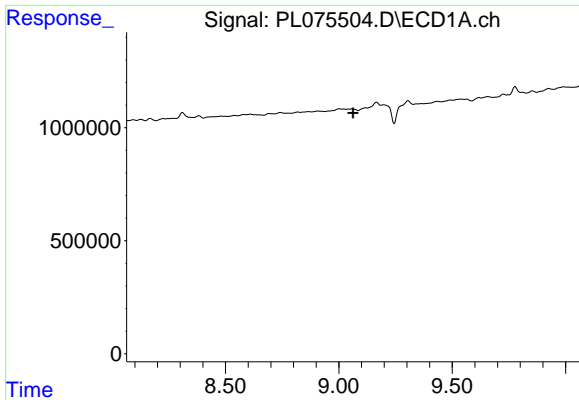
#13 Dieldrin

R.T.: 0.000 min
 Exp R.T.: 8.821 min
 Response: 0
 Conc: N.D.



#13 Dieldrin

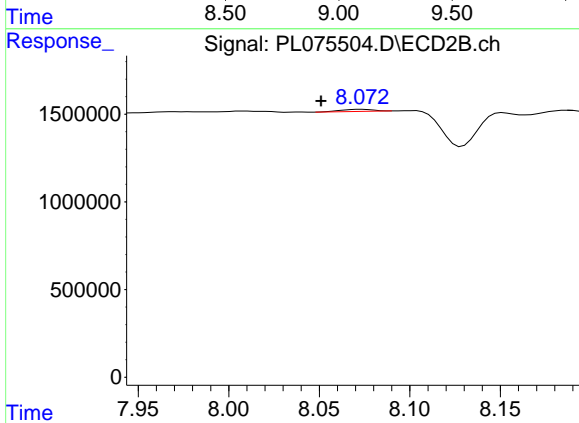
R.T.: 7.770 min
 Delta R.T.: 0.010 min
 Response: 649840
 Conc: 0.37 ng/ml



#14 Endrin

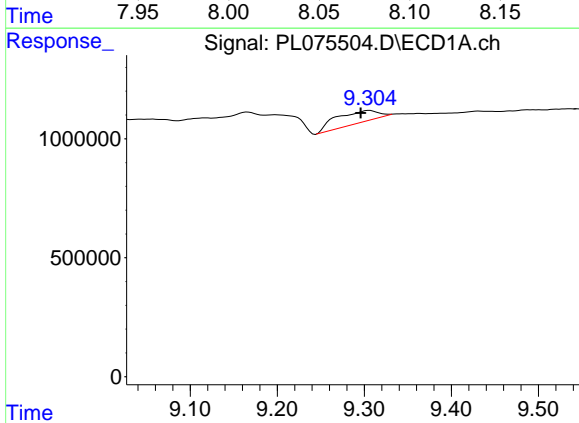
R.T.: 0.000 min
 Exp R.T.: 9.062 min
 Response: 0
 Conc: N.D.

Instrument :
 ECD_L
 ClientSampleId :



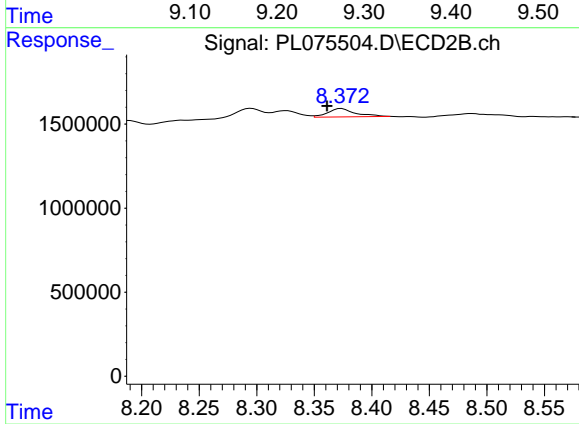
#14 Endrin

R.T.: 8.073 min
 Delta R.T.: 0.022 min
 Response: 145737
 Conc: 0.09 ng/ml



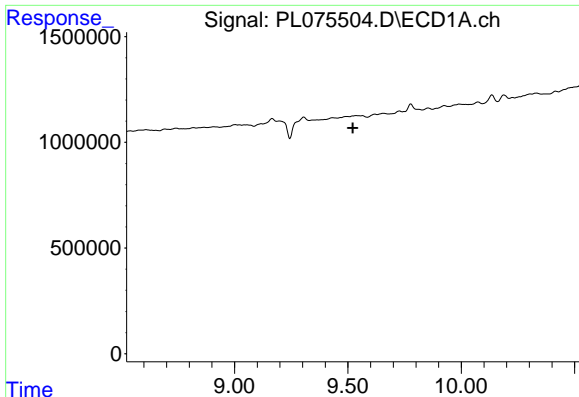
#15 Endosulfan II

R.T.: 9.306 min
 Delta R.T.: 0.010 min
 Response: 1694243
 Conc: 3.00 ng/ml



#15 Endosulfan II

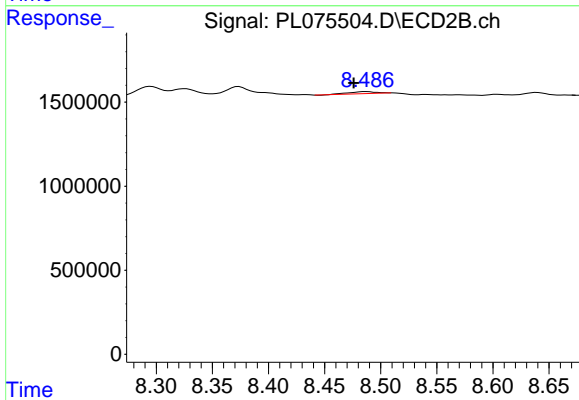
R.T.: 8.374 min
 Delta R.T.: 0.013 min
 Response: 828686
 Conc: 0.53 ng/ml



#17 4,4'-DDT

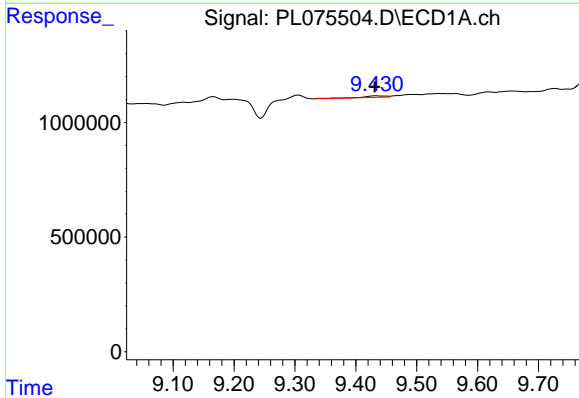
R.T.: 0.000 min
 Exp R.T.: 9.522 min
 Response: 0
 Conc: N.D.

Instrument :
 ECD_L
 ClientSampleId :



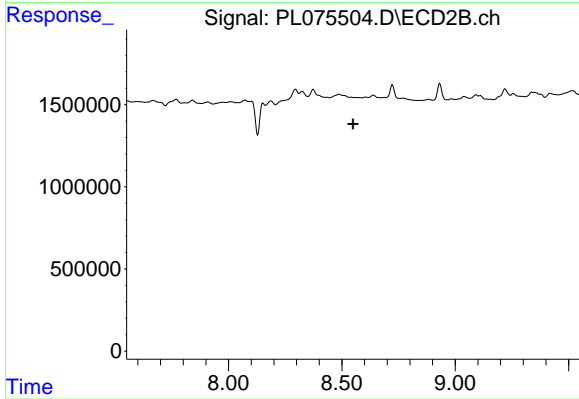
#17 4,4'-DDT

R.T.: 8.487 min
 Delta R.T.: 0.011 min
 Response: 214822
 Conc: 0.15 ng/ml



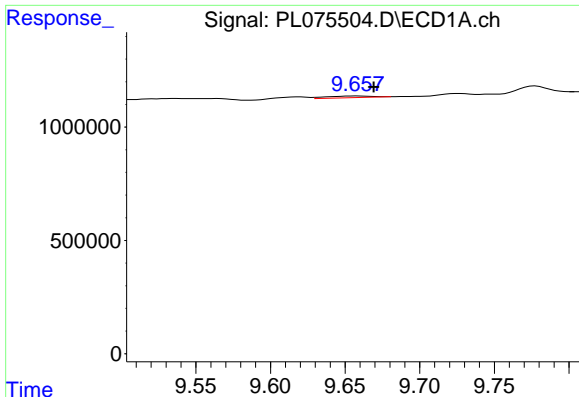
#18 Endrin aldehyde

R.T.: 9.432 min
 Delta R.T.: 0.001 min
 Response: 166058
 Conc: 0.38 ng/ml



#18 Endrin aldehyde

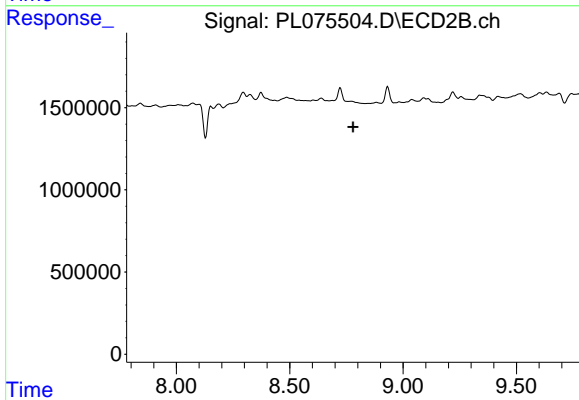
R.T.: 0.000 min
 Exp R.T.: 8.549 min
 Response: 0
 Conc: N.D.



#19 Endosulfan Sulfate

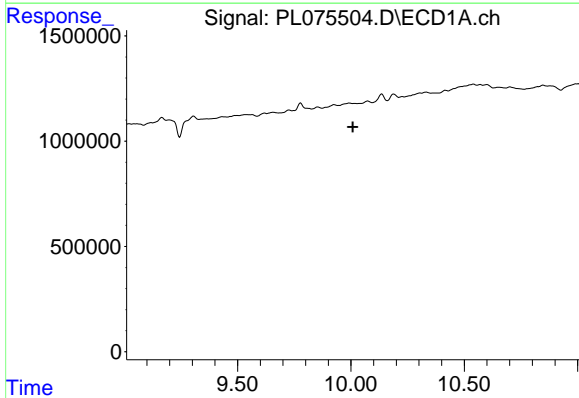
R.T.: 9.658 min
 Delta R.T.: -0.011 min
 Response: 159231
 Conc: 0.29 ng/ml

Instrument :
 ECD_L
 ClientSampleId :



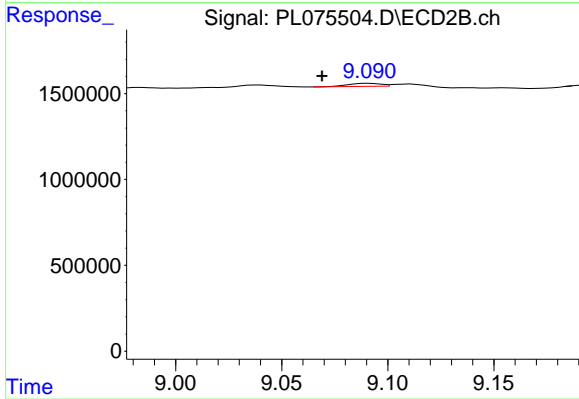
#19 Endosulfan Sulfate

R.T.: 0.000 min
 Exp R.T. : 8.779 min
 Response: 0
 Conc: N.D.



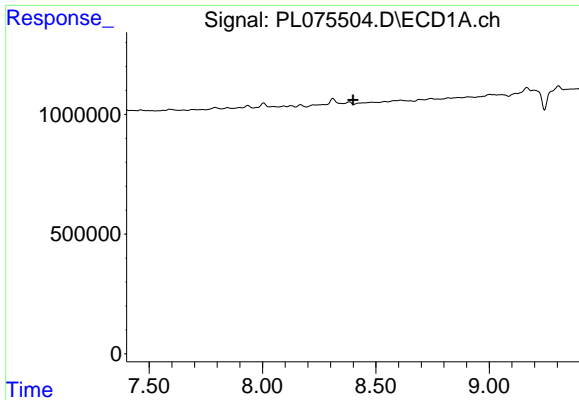
#20 Methoxychlor

R.T.: 0.000 min
 Exp R.T. : 10.008 min
 Response: 0
 Conc: N.D.



#20 Methoxychlor

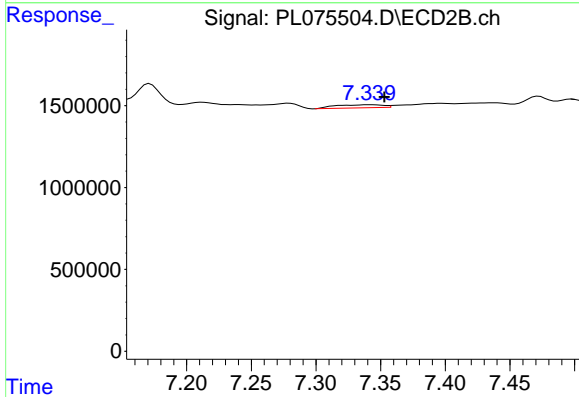
R.T.: 9.092 min
 Delta R.T.: 0.023 min
 Response: 195405
 Conc: 0.24 ng/ml



#25 Chlordane-3

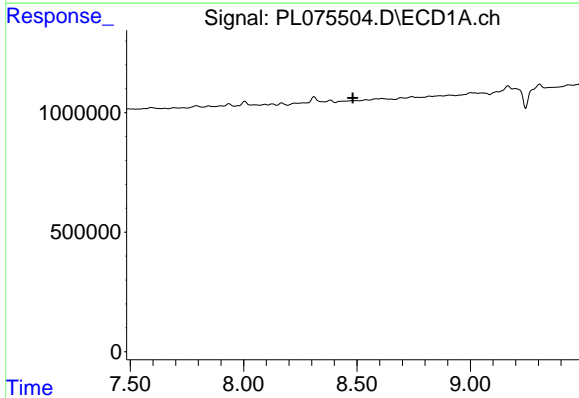
R.T.: 0.000 min
 Exp R.T.: 8.399 min
 Response: 0
 Conc: N.D.

Instrument :
 ECD_L
 ClientSampleId :



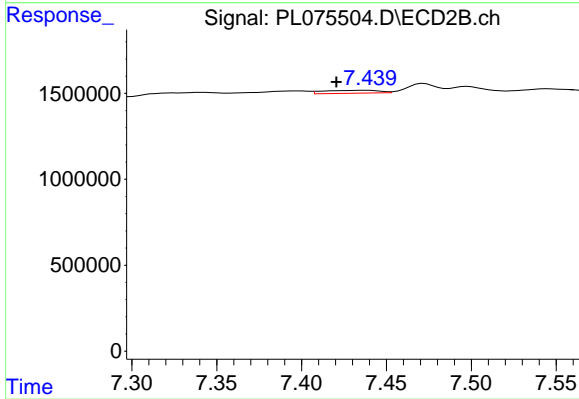
#25 Chlordane-3

R.T.: 7.341 min
 Delta R.T.: -0.012 min
 Response: 496985
 Conc: 2.82 ng/ml



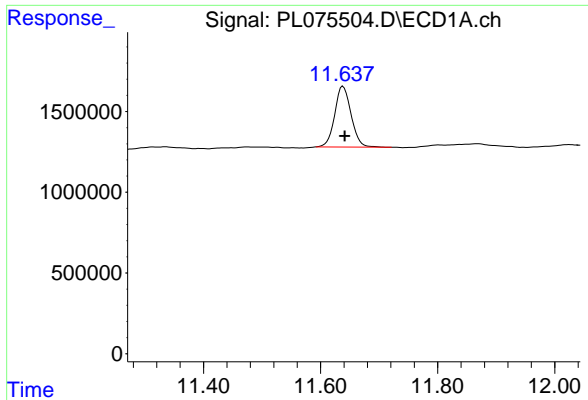
#26 Chlordane-4

R.T.: 0.000 min
 Exp R.T.: 8.482 min
 Response: 0
 Conc: N.D.



#26 Chlordane-4

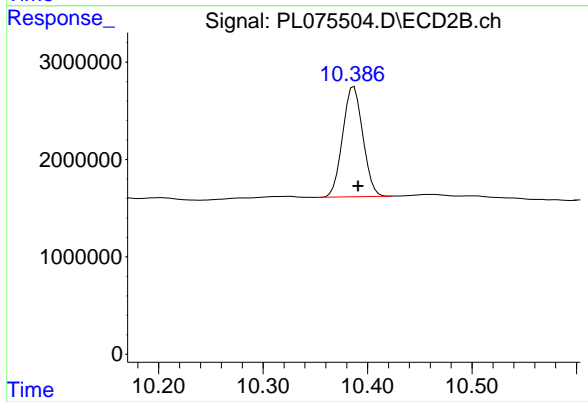
R.T.: 7.438 min
 Delta R.T.: 0.017 min
 Response: 395678
 Conc: 2.09 ng/ml



#28 Decachlorobiphenyl

R.T.: 11.638 min
Delta R.T.: -0.003 min
Response: 7317230
Conc: 13.65 ng/ml

Instrument :
ECD_L
ClientSampleId :



#28 Decachlorobiphenyl

R.T.: 10.387 min
Delta R.T.: -0.004 min
Response: 15164842
Conc: 11.05 ng/ml