

Data Path : Z:\pestpcbsrv\HPCHEM1\ECD_L\Data\PL060622\
 Data File : PL075586.D
 Signal(s) : Signal #1: ECD1A.ch Signal #2: ECD2B.ch
 Acq On : 06 Jun 2022 22:56
 Operator : AR\AJ
 Sample : N2656-21DL2 20X
 Misc :
 ALS Vial : 26 Sample Multiplier: 1

Instrument :
 ECD_L
 ClientSampleId :

Integration File signal 1: autoint1.e
 Integration File signal 2: autoint2.e
 Quant Time: Jun 07 02:52:47 2022
 Quant Method : Z:\pestpcbsrv\HPCHEM1\ECD_L\methods\PL060622.M
 Quant Title : GC Extractables
 QLast Update : Tue Jun 07 02:04:29 2022
 Response via : Initial Calibration
 Integrator: ChemStation

Volume Inj. : 1 µl
 Signal #1 Phase : ZB-MR2 Signal #2 Phase: ZB-MR1
 Signal #1 Info : 30M x 0.32mm x0.2 Signal #2 Info : 30M x 0.32mm x0.5µm

	Compound	RT#1	RT#2	Resp#1	Resp#2	ng/ml	ng/ml

System Monitoring Compounds							
1)	SA Tetrachlo...	5.642	4.638	812199	1913879	1.203	1.140
28)	SA Decachlor...	11.633	10.383	958192	1774931	1.565	1.260
Target Compounds							
2)	A alpha-BHC	6.225	5.340	10619991	25607008	11.298	11.309
3)	MA gamma-BHC...	6.624	5.761	48500007	115.1E6	55.256	53.060
4)	MA Heptachlor	7.278	6.169	8793757	19793362	9.563	9.283
5)	MB Aldrin	7.652	6.493	47775127	109.2E6	58.188	55.624
6)	B beta-BHC	6.875	6.139	13168642	31129200	32.086	31.715
7)	B delta-BHC	7.146	6.400	25845930	65817455	33.589	30.744
8)	B Heptachlo...	8.120	7.067	45749885	105.0E6	59.186	57.392
9)	A Endosulfan I	8.529	7.468	16367686	38768709	23.393	23.179
10)	B gamma-Chl...	8.390	7.343	43470179	102.4E6	55.978	55.860
11)	B alpha-Chl...	8.472	7.412	33848149	79350370	44.385	43.459
12)	B 4,4'-DDE	8.658	7.624	39794459	94939342	60.128	59.383
13)	MA Dieldrin	8.818	7.754	20698775	48278623	28.651	28.523
14)	MA Endrin	9.060	8.044	18155639	42441250	30.621	31.044
15)	B Endosulfa...	9.293	8.354	34445380	79060856	55.353	55.169
16)	A 4,4'-DDD	9.200	8.208	17989741	41253155	32.879	31.372
17)	MA 4,4'-DDT	9.519	8.468	21322753	38227247	33.287	27.193
18)	B Endrin al...	9.428	8.542	15421812	34174645	30.111	30.341
19)	B Endosulfa...	9.666	8.771	4595888	10419641	7.337	7.094
20)	A Methoxychlor	10.005	9.061	6037393	14158327	16.866	17.380
21)	B Endrin ke...	10.168	9.290	36316644	81211435	51.642	50.309
24)	Chlordane-2	7.652f	0.000	47775127	0	1553.351	N.D. #
25)	Chlordane-3	8.390	7.343	43470179	102.4E6	421.008	595.522 #
26)	Chlordane-4	8.472	7.412	33848149	79350370	267.243	431.094 #

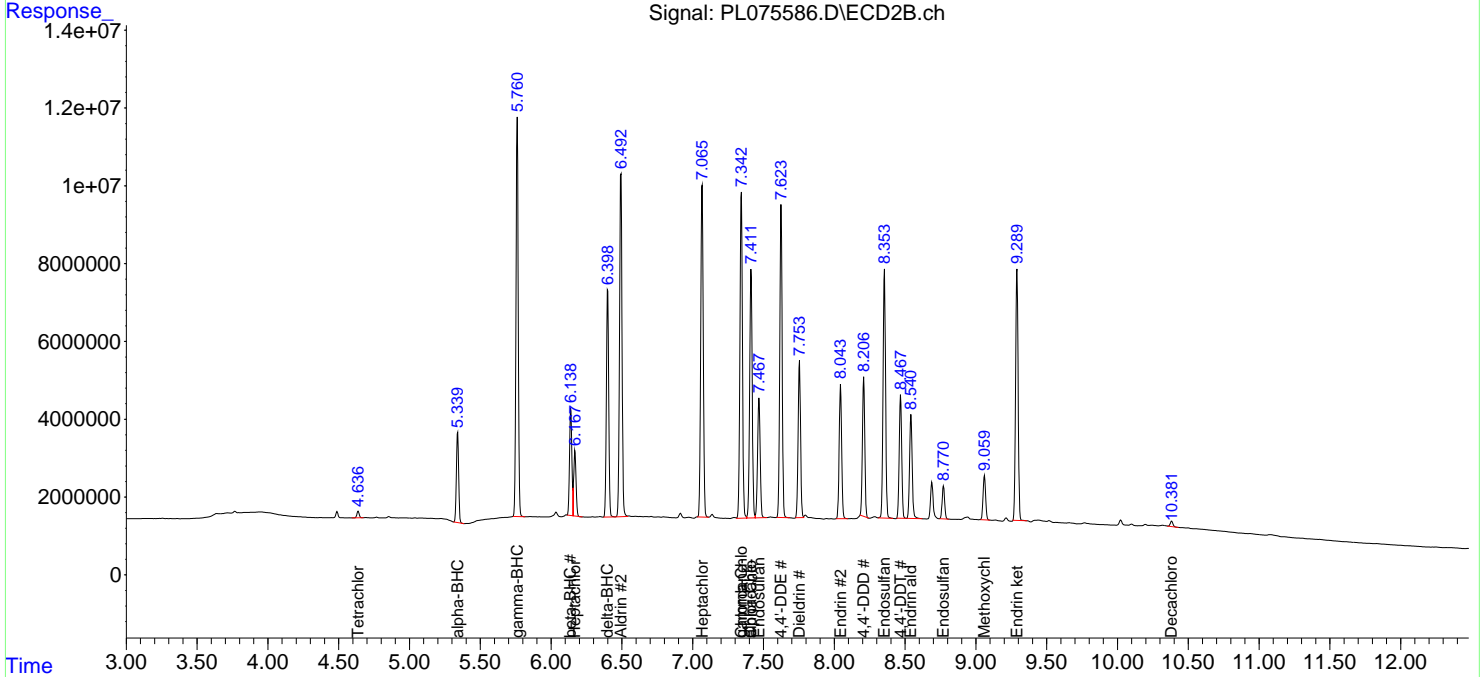
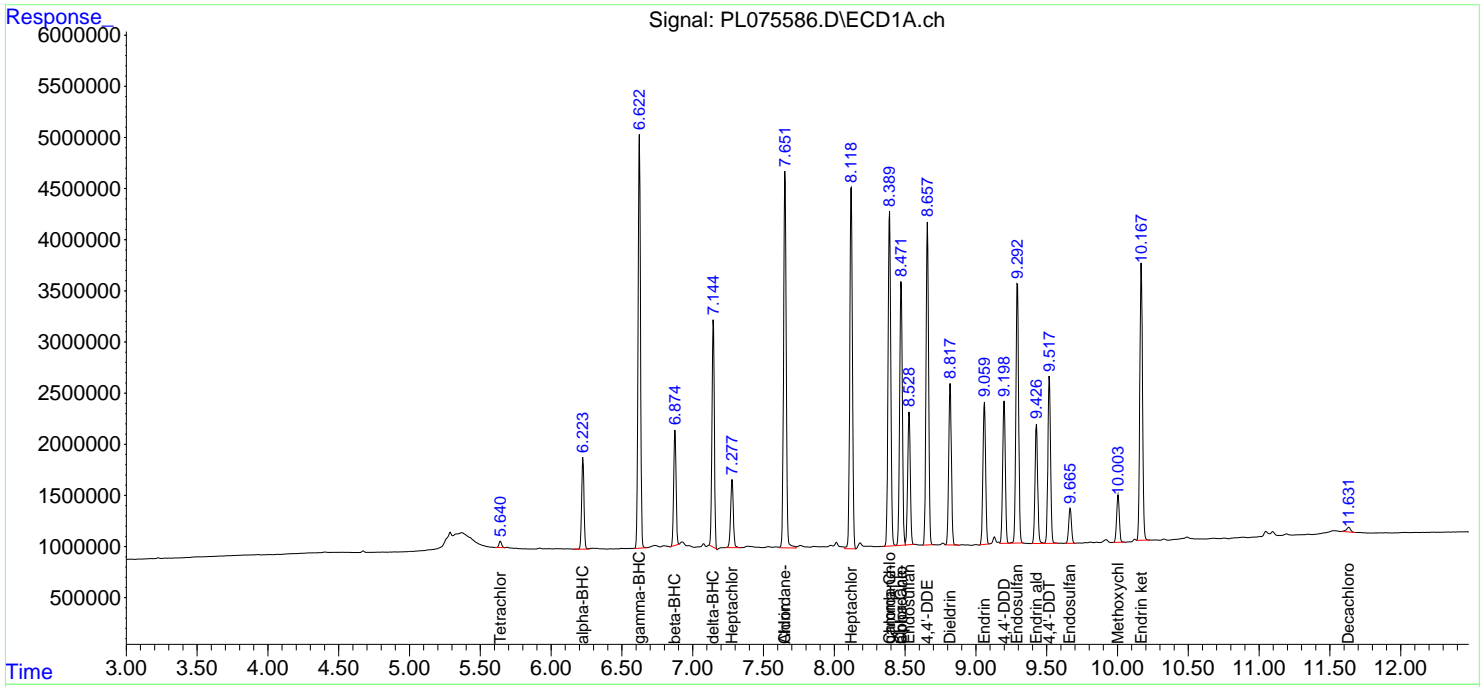
(f)=RT Delta > 1/2 Window (#)=Amounts differ by > 25% (m)=manual int.

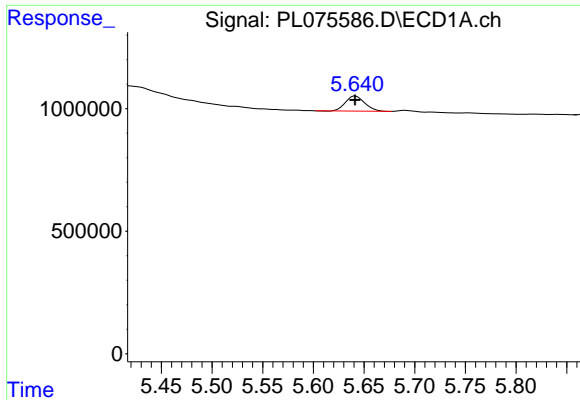
Data Path : Z:\pestpcbsrv\HPCHEM1\ECD_L\Data\PL060622\
 Data File : PL075586.D
 Signal(s) : Signal #1: ECD1A.ch Signal #2: ECD2B.ch
 Acq On : 06 Jun 2022 22:56
 Operator : AR\AJ
 Sample : N2656-21DL2 20X
 Misc :
 ALS Vial : 26 Sample Multiplier: 1

Instrument :
 ECD_L
 ClientSampleId :

Integration File signal 1: autoint1.e
 Integration File signal 2: autoint2.e
 Quant Time: Jun 07 02:52:47 2022
 Quant Method : Z:\pestpcbsrv\HPCHEM1\ECD_L\methods\PL060622.M
 Quant Title : GC Extractables
 QLast Update : Tue Jun 07 02:04:29 2022
 Response via : Initial Calibration
 Integrator: ChemStation

Volume Inj. : 1 µl
 Signal #1 Phase : ZB-MR2 Signal #2 Phase: ZB-MR1
 Signal #1 Info : 30M x 0.32mm x0.2 Signal #2 Info : 30M x 0.32mm x0.5µm

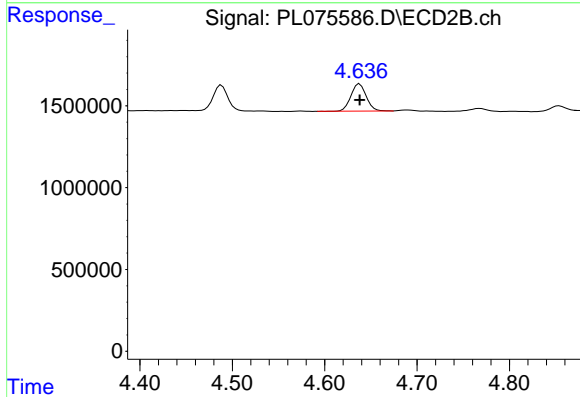




#1 Tetrachloro-m-xylene

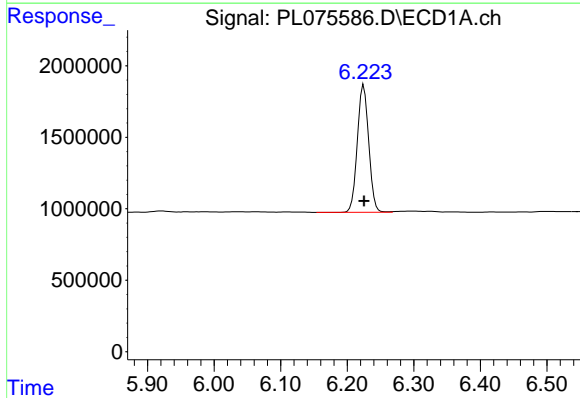
R.T.: 5.642 min
 Delta R.T.: 0.000 min
 Response: 812199
 Conc: 1.20 ng/ml

Instrument :
 ECD_L
 ClientSampleId :



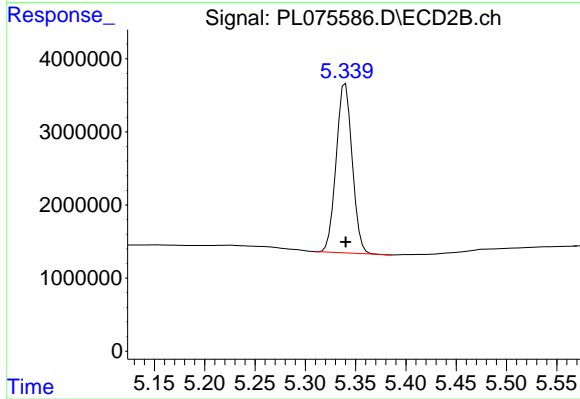
#1 Tetrachloro-m-xylene

R.T.: 4.638 min
 Delta R.T.: 0.000 min
 Response: 1913879
 Conc: 1.14 ng/ml



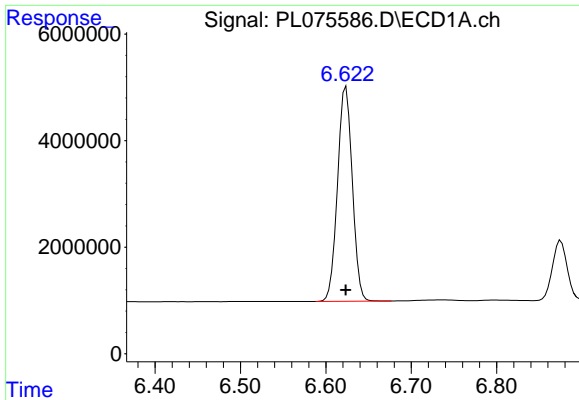
#2 alpha-BHC

R.T.: 6.225 min
 Delta R.T.: 0.000 min
 Response: 10619991
 Conc: 11.30 ng/ml



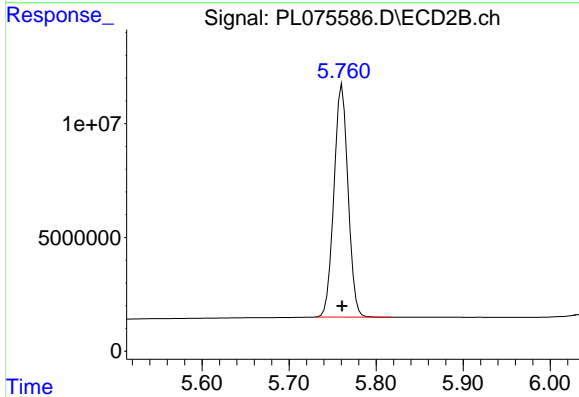
#2 alpha-BHC

R.T.: 5.340 min
 Delta R.T.: 0.000 min
 Response: 25607008
 Conc: 11.31 ng/ml

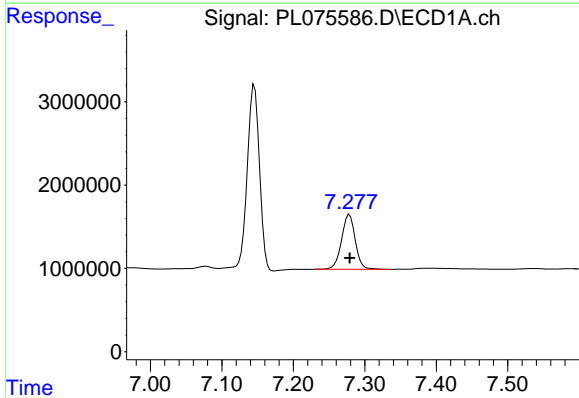


#3 gamma-BHC (Lindane)
 R.T.: 6.624 min
 Delta R.T.: 0.000 min
 Response: 48500007
 Conc: 55.26 ng/ml

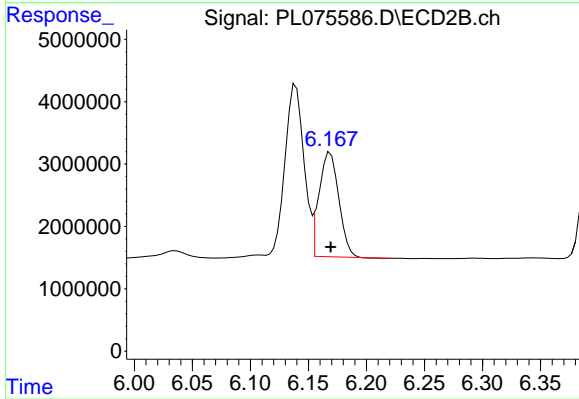
Instrument :
 ECD_L
 ClientSampleId :



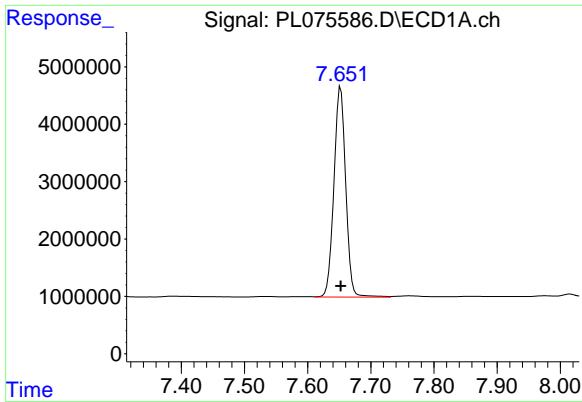
#3 gamma-BHC (Lindane)
 R.T.: 5.761 min
 Delta R.T.: 0.000 min
 Response: 115063657
 Conc: 53.06 ng/ml



#4 Heptachlor
 R.T.: 7.278 min
 Delta R.T.: 0.000 min
 Response: 8793757
 Conc: 9.56 ng/ml



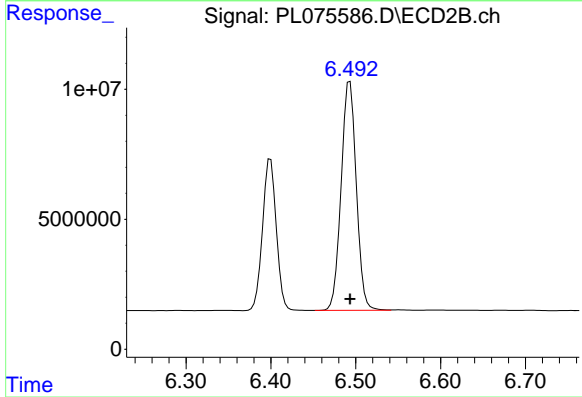
#4 Heptachlor
 R.T.: 6.169 min
 Delta R.T.: 0.000 min
 Response: 19793362
 Conc: 9.28 ng/ml



#5 Aldrin

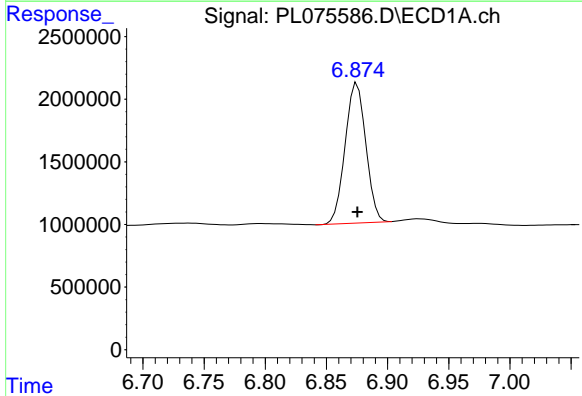
R.T.: 7.652 min
 Delta R.T.: 0.000 min
 Response: 47775127
 Conc: 58.19 ng/ml

Instrument :
 ECD_L
 ClientSampleId :



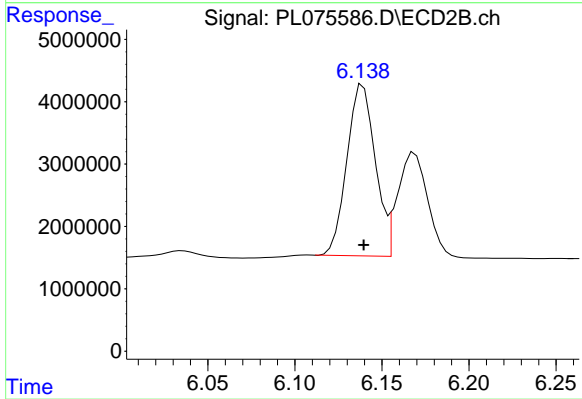
#5 Aldrin

R.T.: 6.493 min
 Delta R.T.: 0.000 min
 Response: 109243866
 Conc: 55.62 ng/ml



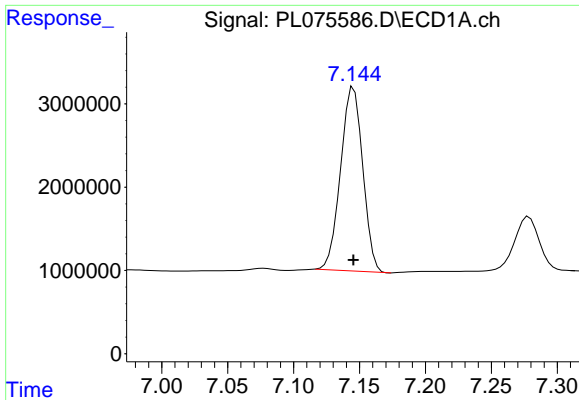
#6 beta-BHC

R.T.: 6.875 min
 Delta R.T.: 0.000 min
 Response: 13168642
 Conc: 32.09 ng/ml



#6 beta-BHC

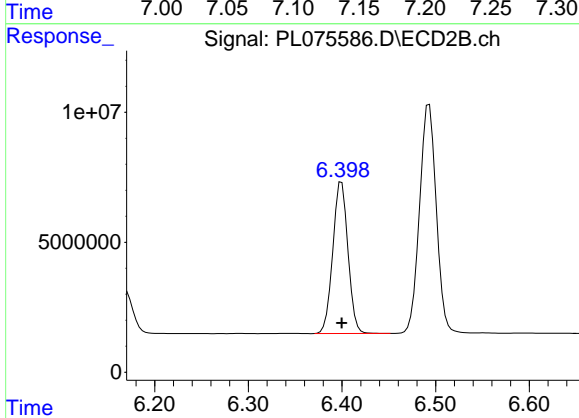
R.T.: 6.139 min
 Delta R.T.: 0.000 min
 Response: 31129200
 Conc: 31.71 ng/ml



#7 delta-BHC

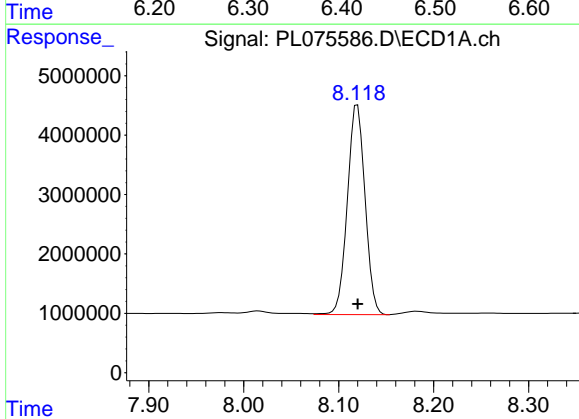
R.T.: 7.146 min
 Delta R.T.: 0.000 min
 Response: 25845930
 Conc: 33.59 ng/ml

Instrument :
 ECD_L
 ClientSampleId :



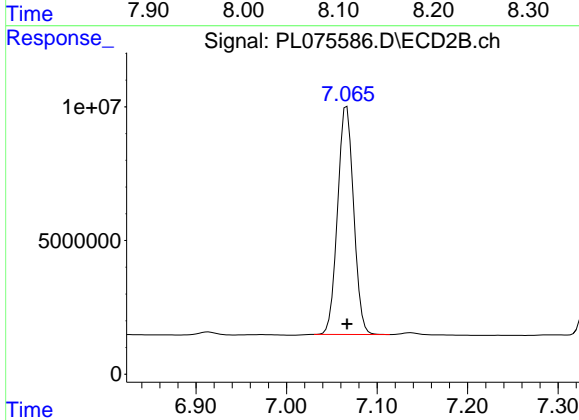
#7 delta-BHC

R.T.: 6.400 min
 Delta R.T.: 0.000 min
 Response: 65817455
 Conc: 30.74 ng/ml



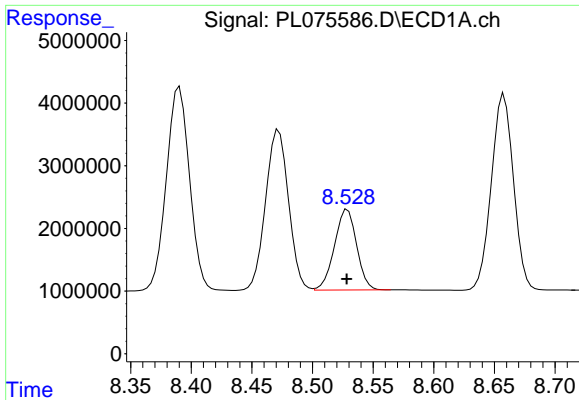
#8 Heptachlor epoxide

R.T.: 8.120 min
 Delta R.T.: 0.000 min
 Response: 45749885
 Conc: 59.19 ng/ml



#8 Heptachlor epoxide

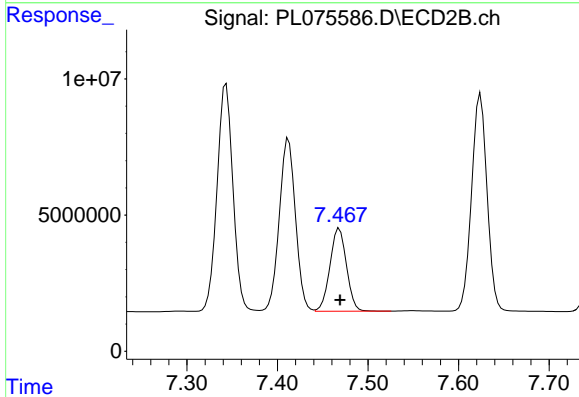
R.T.: 7.067 min
 Delta R.T.: 0.000 min
 Response: 105019615
 Conc: 57.39 ng/ml



#9 Endosulfan I

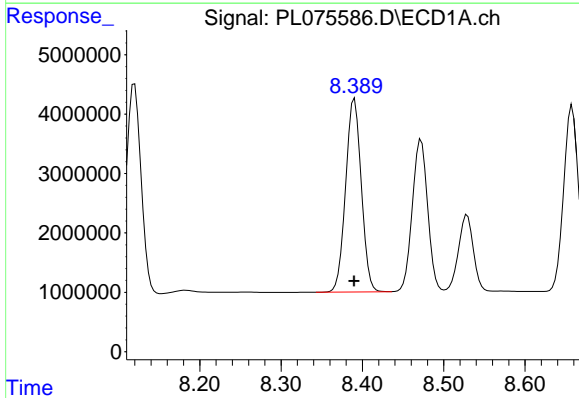
R.T.: 8.529 min
 Delta R.T.: 0.000 min
 Response: 16367686
 Conc: 23.39 ng/ml

Instrument :
 ECD_L
 ClientSampleId :



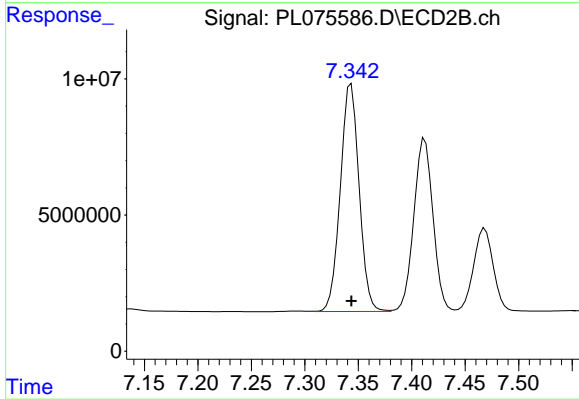
#9 Endosulfan I

R.T.: 7.468 min
 Delta R.T.: 0.000 min
 Response: 38768709
 Conc: 23.18 ng/ml



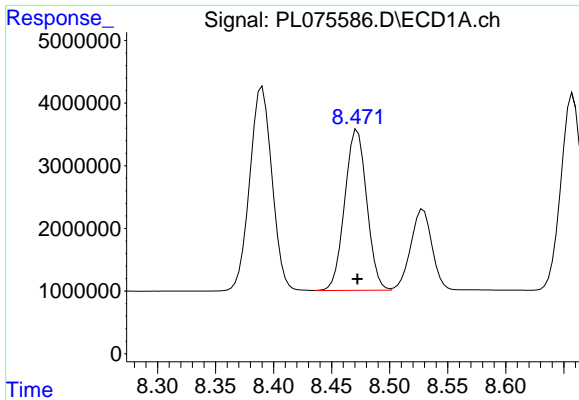
#10 gamma-Chlordane

R.T.: 8.390 min
 Delta R.T.: 0.000 min
 Response: 43470179
 Conc: 55.98 ng/ml



#10 gamma-Chlordane

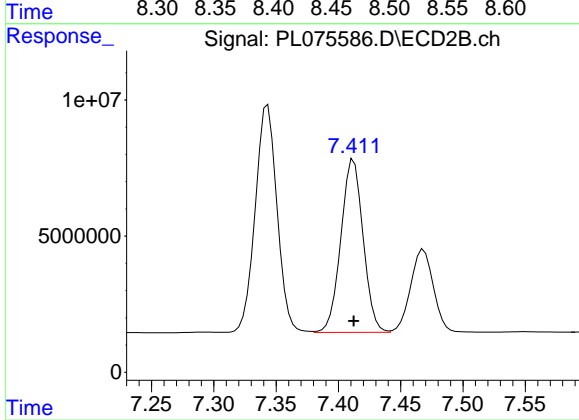
R.T.: 7.343 min
 Delta R.T.: 0.000 min
 Response: 102420405
 Conc: 55.86 ng/ml



#11 alpha-Chlordane

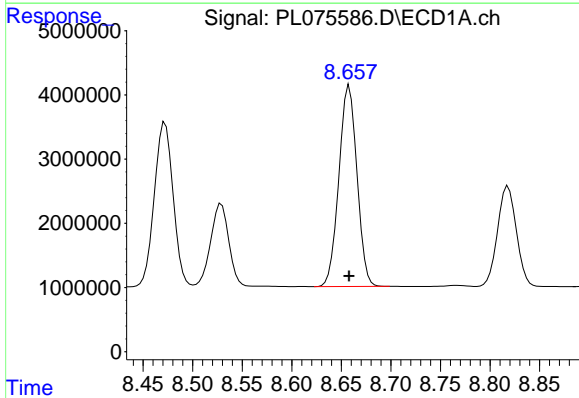
R.T.: 8.472 min
Delta R.T.: 0.000 min
Response: 33848149
Conc: 44.38 ng/ml

Instrument :
ECD_L
ClientSampleId :



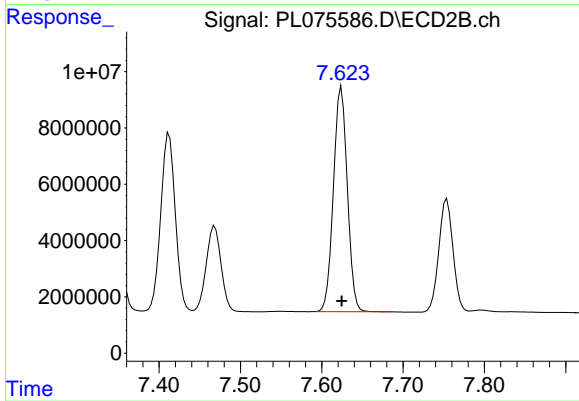
#11 alpha-Chlordane

R.T.: 7.412 min
Delta R.T.: 0.000 min
Response: 79350370
Conc: 43.46 ng/ml



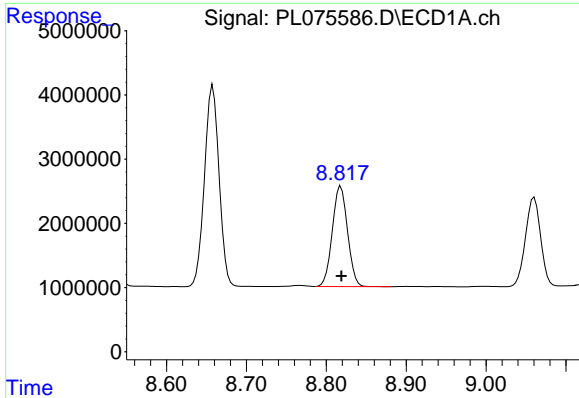
#12 4,4'-DDE

R.T.: 8.658 min
Delta R.T.: 0.000 min
Response: 39794459
Conc: 60.13 ng/ml



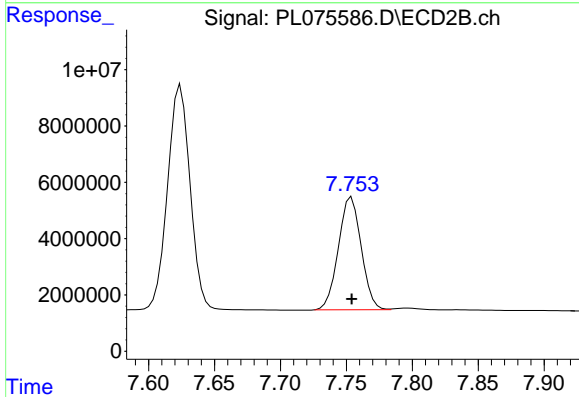
#12 4,4'-DDE

R.T.: 7.624 min
Delta R.T.: 0.000 min
Response: 94939342
Conc: 59.38 ng/ml

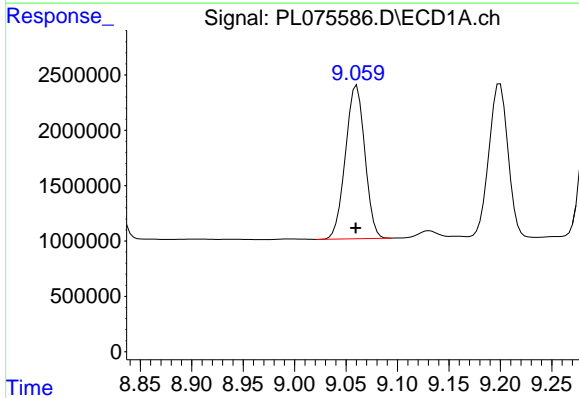


#13 Dieldrin
 R.T.: 8.818 min
 Delta R.T.: 0.000 min
 Response: 20698775
 Conc: 28.65 ng/ml

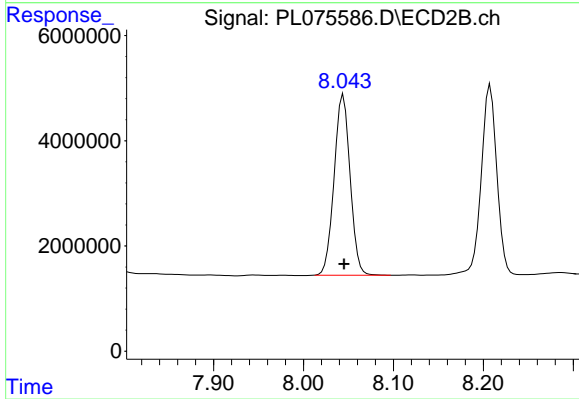
Instrument :
 ECD_L
 ClientSampleId :



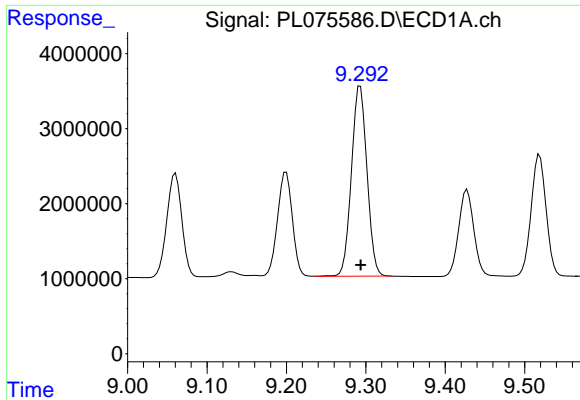
#13 Dieldrin
 R.T.: 7.754 min
 Delta R.T.: 0.000 min
 Response: 48278623
 Conc: 28.52 ng/ml



#14 Endrin
 R.T.: 9.060 min
 Delta R.T.: 0.001 min
 Response: 18155639
 Conc: 30.62 ng/ml



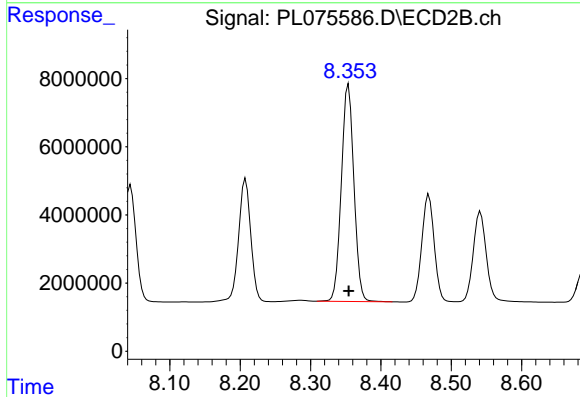
#14 Endrin
 R.T.: 8.044 min
 Delta R.T.: 0.000 min
 Response: 42441250
 Conc: 31.04 ng/ml



#15 Endosulfan II

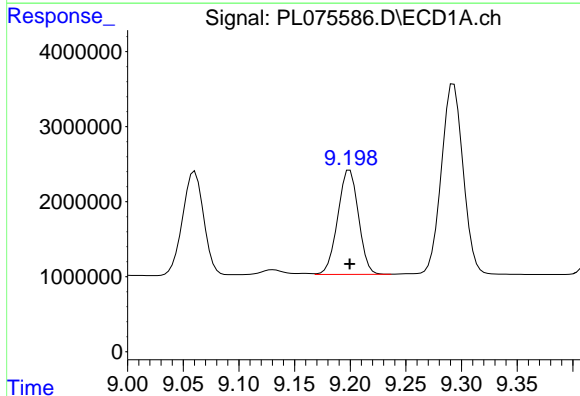
R.T.: 9.293 min
Delta R.T.: 0.000 min
Response: 34445380
Conc: 55.35 ng/ml

Instrument :
ECD_L
ClientSampleId :



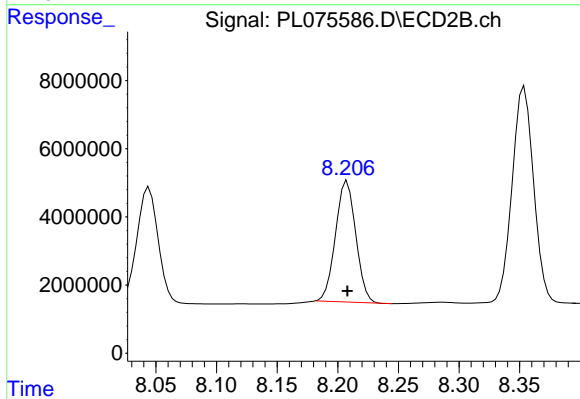
#15 Endosulfan II

R.T.: 8.354 min
Delta R.T.: 0.000 min
Response: 79060856
Conc: 55.17 ng/ml



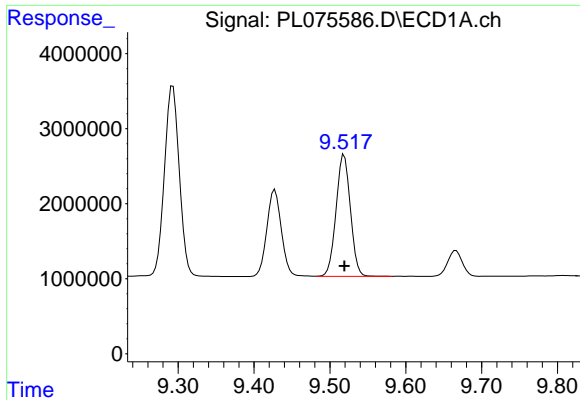
#16 4,4'-DDD

R.T.: 9.200 min
Delta R.T.: 0.000 min
Response: 17989741
Conc: 32.88 ng/ml



#16 4,4'-DDD

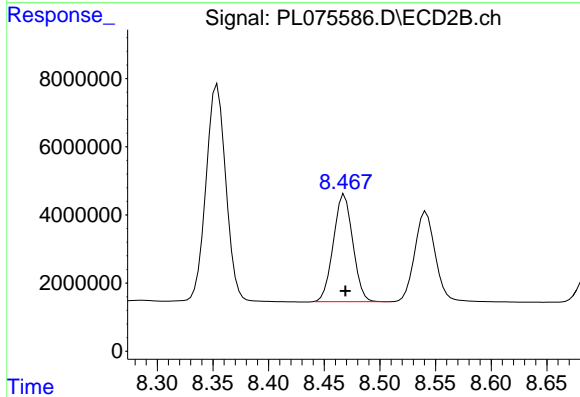
R.T.: 8.208 min
Delta R.T.: 0.000 min
Response: 41253155
Conc: 31.37 ng/ml



#17 4,4'-DDT

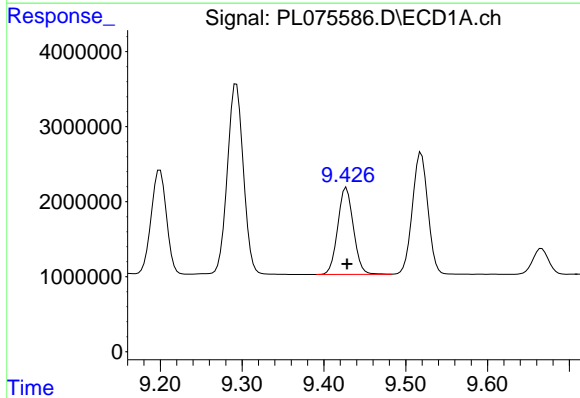
R.T.: 9.519 min
 Delta R.T.: 0.000 min
 Response: 21322753
 Conc: 33.29 ng/ml

Instrument :
 ECD_L
 ClientSampleId :



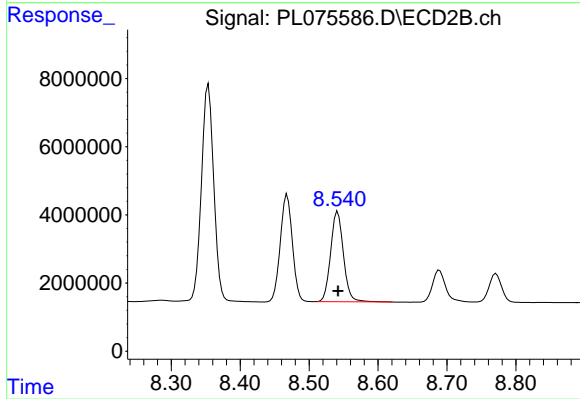
#17 4,4'-DDT

R.T.: 8.468 min
 Delta R.T.: 0.000 min
 Response: 38227247
 Conc: 27.19 ng/ml



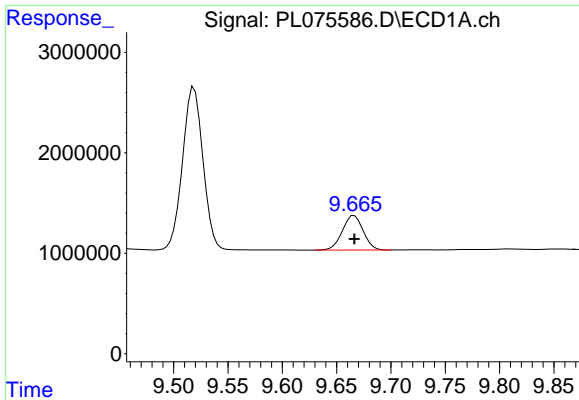
#18 Endrin aldehyde

R.T.: 9.428 min
 Delta R.T.: 0.000 min
 Response: 15421812
 Conc: 30.11 ng/ml



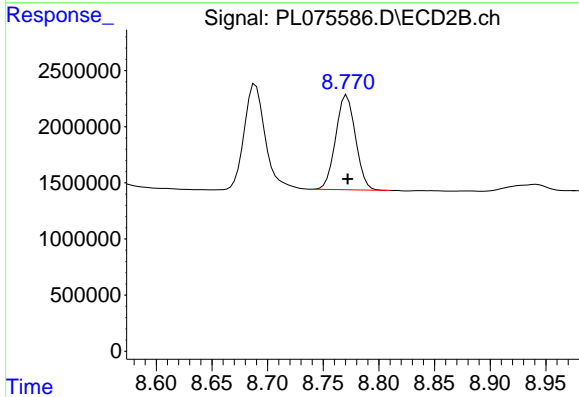
#18 Endrin aldehyde

R.T.: 8.542 min
 Delta R.T.: 0.000 min
 Response: 34174645
 Conc: 30.34 ng/ml

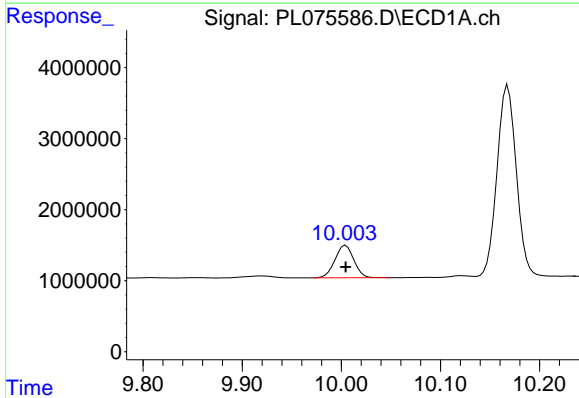


#19 Endosulfan Sulfate
 R.T.: 9.666 min
 Delta R.T.: 0.000 min
 Response: 4595888
 Conc: 7.34 ng/ml

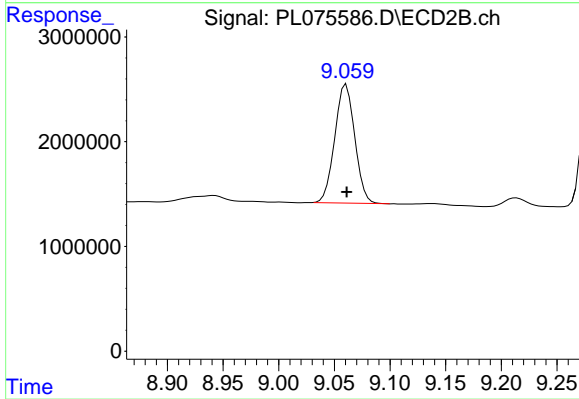
Instrument :
 ECD_L
 ClientSampleId :



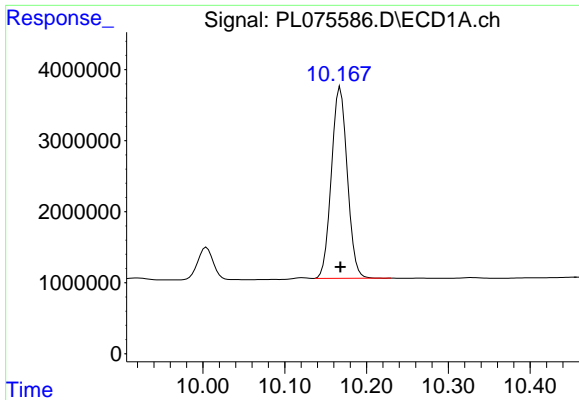
#19 Endosulfan Sulfate
 R.T.: 8.771 min
 Delta R.T.: 0.000 min
 Response: 10419641
 Conc: 7.09 ng/ml



#20 Methoxychlor
 R.T.: 10.005 min
 Delta R.T.: 0.000 min
 Response: 6037393
 Conc: 16.87 ng/ml



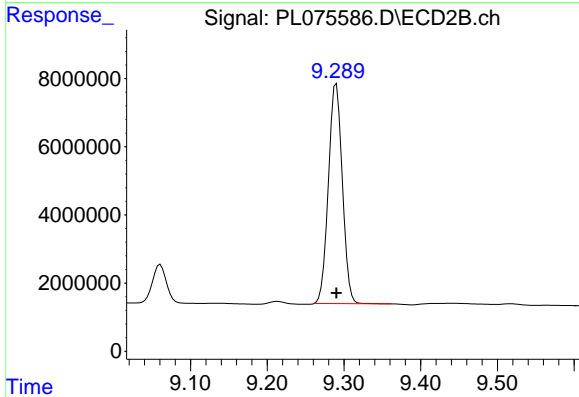
#20 Methoxychlor
 R.T.: 9.061 min
 Delta R.T.: 0.000 min
 Response: 14158327
 Conc: 17.38 ng/ml



#21 Endrin ketone

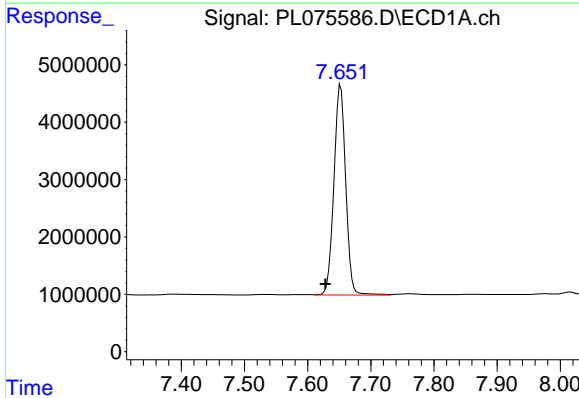
R.T.: 10.168 min
 Delta R.T.: 0.000 min
 Response: 36316644
 Conc: 51.64 ng/ml

Instrument :
 ECD_L
 ClientSampleId :



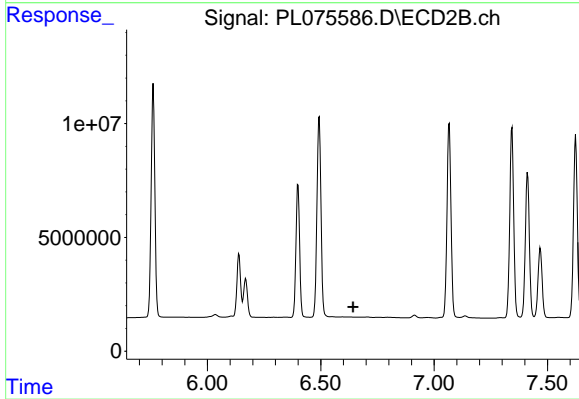
#21 Endrin ketone

R.T.: 9.290 min
 Delta R.T.: 0.000 min
 Response: 81211435
 Conc: 50.31 ng/ml



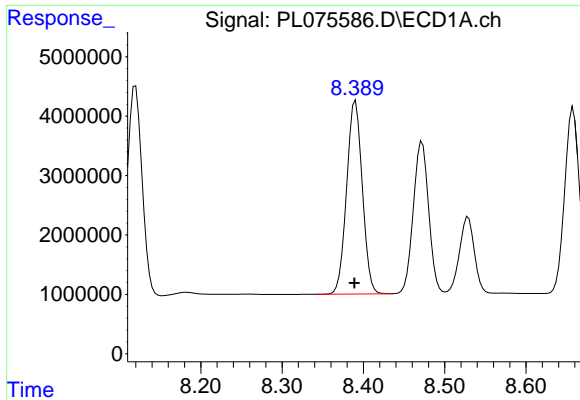
#24 Chlordane-2

R.T.: 7.652 min
 Delta R.T.: 0.024 min
 Response: 47775127
 Conc: 1553.35 ng/ml



#24 Chlordane-2

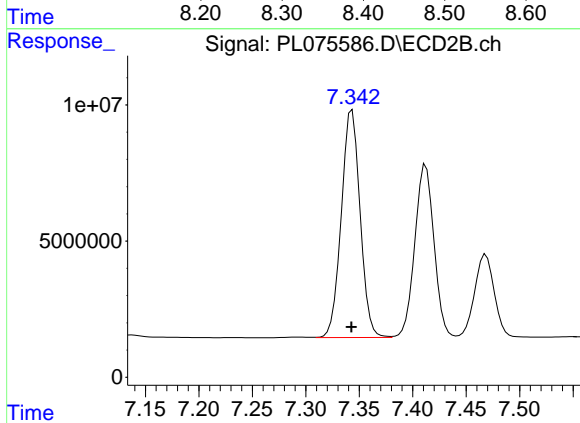
R.T.: 0.000 min
 Exp R.T. : 6.642 min
 Response: 0
 Conc: N.D.



#25 Chlordane-3

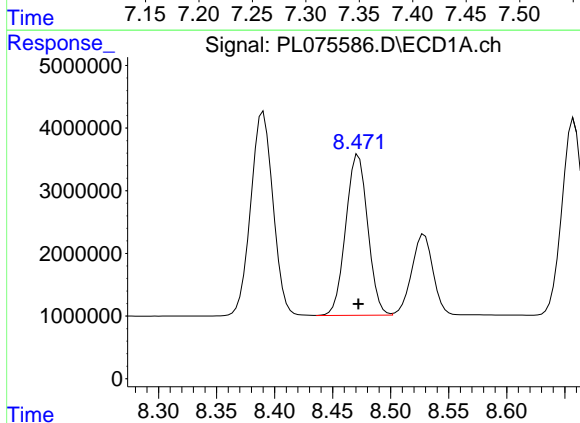
R.T.: 8.390 min
Delta R.T.: 0.001 min
Response: 43470179
Conc: 421.01 ng/ml

Instrument :
ECD_L
ClientSampleId :



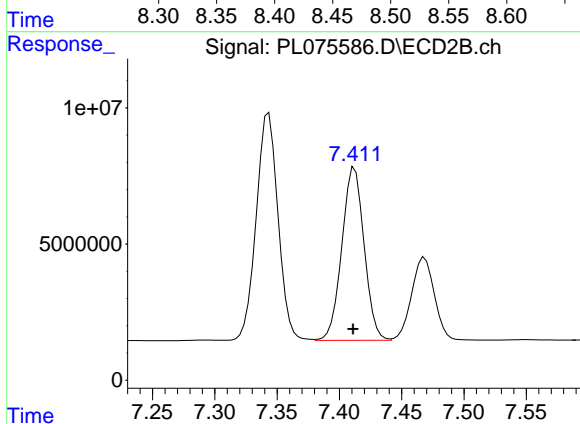
#25 Chlordane-3

R.T.: 7.343 min
Delta R.T.: 0.000 min
Response: 102420405
Conc: 595.52 ng/ml



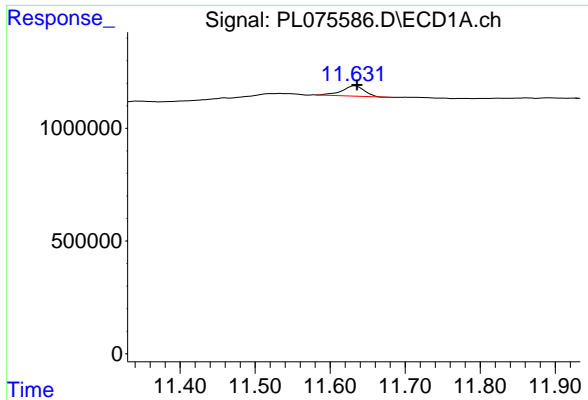
#26 Chlordane-4

R.T.: 8.472 min
Delta R.T.: 0.000 min
Response: 33848149
Conc: 267.24 ng/ml



#26 Chlordane-4

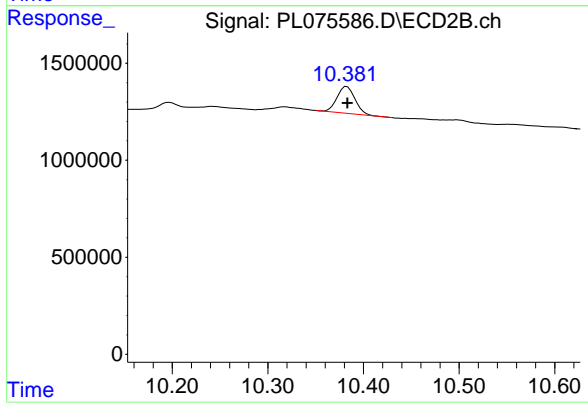
R.T.: 7.412 min
Delta R.T.: 0.001 min
Response: 79350370
Conc: 431.09 ng/ml



#28 Decachlorobiphenyl

R.T.: 11.633 min
Delta R.T.: -0.003 min
Response: 958192
Conc: 1.57 ng/ml

Instrument :
ECD_L
ClientSampleId :



#28 Decachlorobiphenyl

R.T.: 10.383 min
Delta R.T.: 0.000 min
Response: 1774931
Conc: 1.26 ng/ml