

Data Path : Z:\pestpcbsrv\HPCHEM1\ECD\_L\Data\PL071918\  
 Data File : PL038317.D  
 Signal(s) : Signal #1: ECD1A.ch Signal #2: ECD2B.ch  
 Acq On : 19 Jul 2018 21:36  
 Operator : AJ\SJ  
 Sample : J4035-06  
 Misc :  
 ALS Vial : 35 Sample Multiplier: 1

Instrument :  
 ECD\_L  
 ClientSampleId :

Integration File signal 1: autoint1.e  
 Integration File signal 2: autoint2.e  
 Quant Time: Jul 20 04:42:05 2018  
 Quant Method : Z:\PESTPCBSRV\HPCHEM1\ECD\_L\methods\PL071318.M  
 Quant Title : GC Extractables  
 QLast Update : Sat Jul 14 00:12:12 2018  
 Response via : Initial Calibration  
 Integrator: ChemStation

Volume Inj. : 2 µl  
 Signal #1 Phase : ZB-MR2 Signal #2 Phase: ZB-MR2  
 Signal #1 Info : 30M x 0.32mm x0.5 Signal #2 Info : 30M x 0.32mm x0.25µm

Compound	RT#1	RT#2	Resp#1	Resp#2	ng/ml	ng/ml
-----						
System Monitoring Compounds						
1) SA Tetrachlo...	3.327	3.929	158.5E6	62374030	21.290	23.762
2) SA Decachlor...	7.997	8.936	136.9E6	51570615	18.050	21.097
Target Compounds						
2) A alpha-BHC	0.000	4.277f	0	3486410	N.D.	0.901 #
3) MA gamma-BHC...	4.084f	4.564	75357515	3354356	7.188	0.929 #
4) MA Heptachlor	4.291	5.053f	13192178	-861328	1.240	N.D. #
5) MB Aldrin	4.558	0.000	5249730	0	0.502	N.D. #
6) B beta-BHC	4.291	0.000	13192178	0	2.795	N.D. #
7) B delta-BHC	0.000	4.956	0	19332556	N.D.	5.829 #
15) B Endosulfa...	6.031f	6.796	24792121	28707	3.126	0.012 #
16) A 4,4'-DDD	0.000	6.676f	0	9099835	N.D.	4.251 #
17) MA 4,4'-DDT	0.000	7.003	0	551862	N.D.	0.259 #
19) B Endosulfa...	0.000	7.178	0	101683	N.D.	0.047 #
20) A Methoxychlor	0.000	7.441f	0	152224	N.D.	0.134 #
23) Chlordane-1	0.000	4.956	0	19332556	N.D.	166.825 #
27) Chlordane-5	0.000	6.829	0	1131578	N.D.	12.632 #
-----						

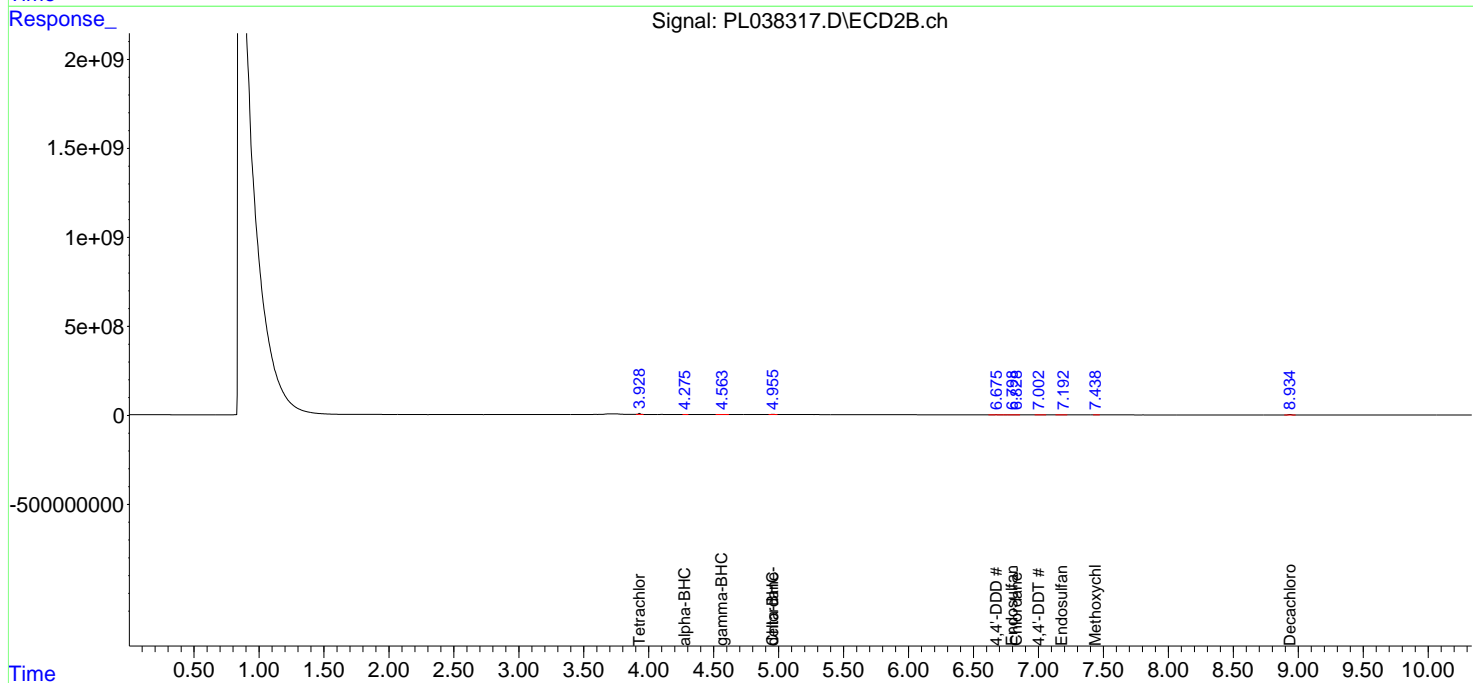
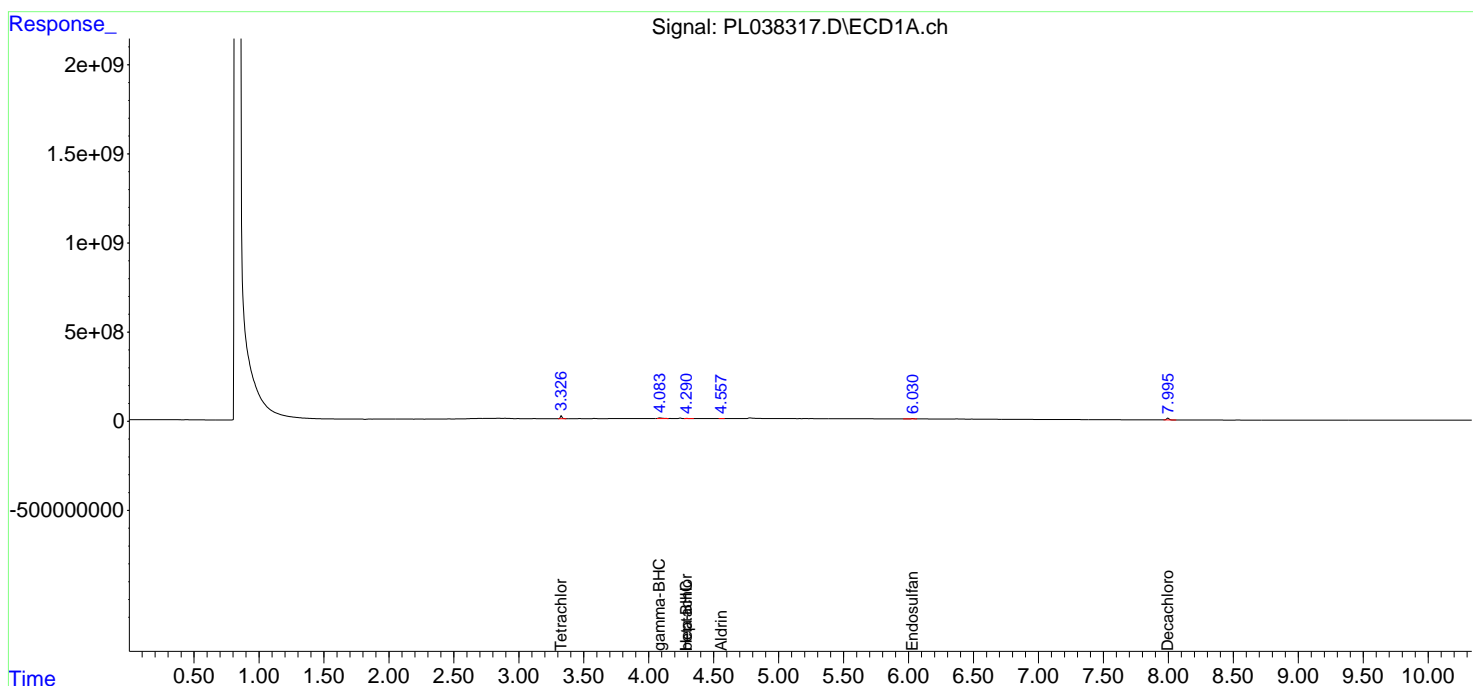
(f)=RT Delta > 1/2 Window (#)=Amounts differ by > 25% (m)=manual int.

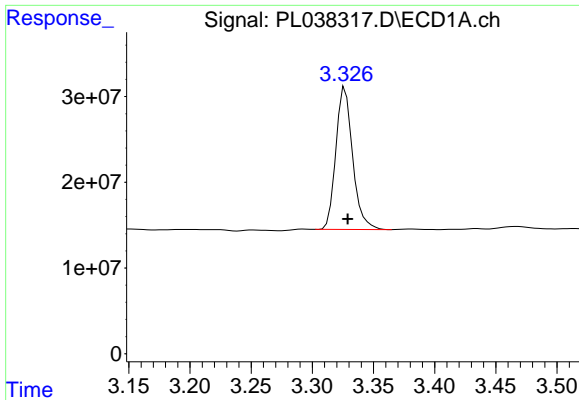
Data Path : Z:\pestpcbsrv\HPCHEM1\ECD\_L\Data\PL071918\  
 Data File : PL038317.D  
 Signal(s) : Signal #1: ECD1A.ch Signal #2: ECD2B.ch  
 Acq On : 19 Jul 2018 21:36  
 Operator : AJ\SJ  
 Sample : J4035-06  
 Misc :  
 ALS Vial : 35 Sample Multiplier: 1

Instrument :  
 ECD\_L  
 ClientSampled :

Integration File signal 1: autoint1.e  
 Integration File signal 2: autoint2.e  
 Quant Time: Jul 20 04:42:05 2018  
 Quant Method : Z:\PESTPCBSRV\HPCHEM1\ECD\_L\methods\PL071318.M  
 Quant Title : GC Extractables  
 QLast Update : Sat Jul 14 00:12:12 2018  
 Response via : Initial Calibration  
 Integrator: ChemStation

Volume Inj. : 2 µl  
 Signal #1 Phase : ZB-MR1 Signal #2 Phase: ZB-MR2  
 Signal #1 Info : 30M x 0.32mm x0.5 Signal #2 Info : 30M x 0.32mm x0.25µm

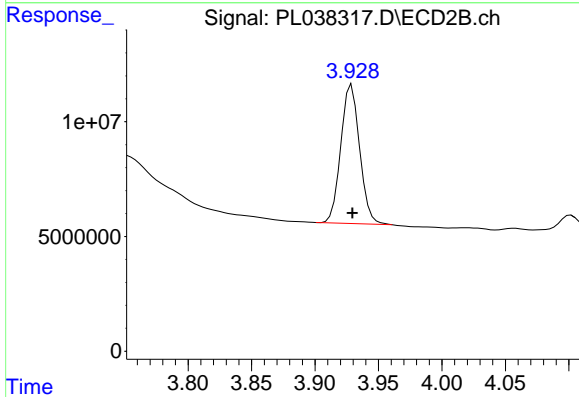




#1 Tetrachloro-m-xylene

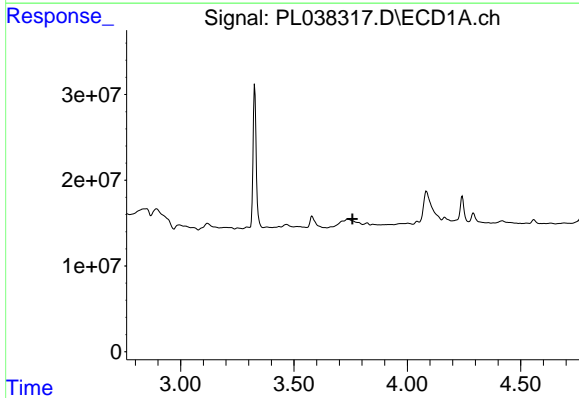
R.T.: 3.327 min  
 Delta R.T.: -0.002 min  
 Response: 158534240  
 Conc: 21.29 ng/ml

Instrument :  
 ECD\_L  
 ClientSampled :



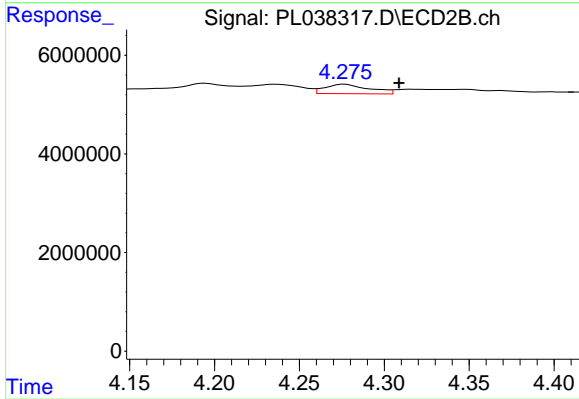
#1 Tetrachloro-m-xylene

R.T.: 3.929 min  
 Delta R.T.: 0.000 min  
 Response: 62374030  
 Conc: 23.76 ng/ml



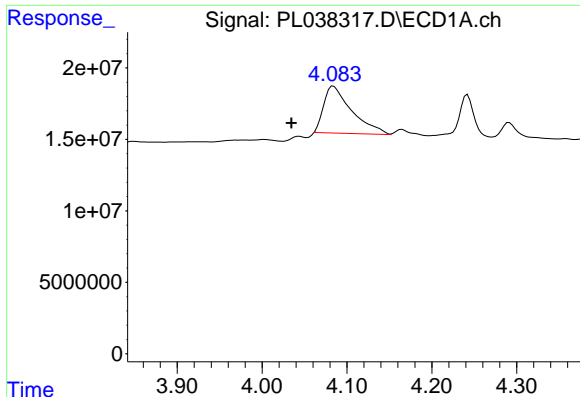
#2 alpha-BHC

R.T.: 0.000 min  
 Exp R.T. : 3.758 min  
 Response: 0  
 Conc: N.D.



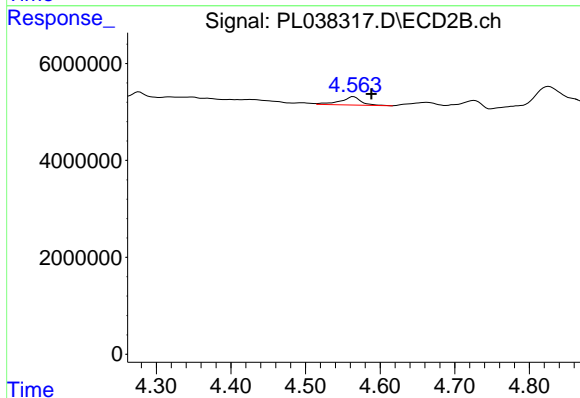
#2 alpha-BHC

R.T.: 4.277 min  
 Delta R.T.: -0.032 min  
 Response: 3486410  
 Conc: 0.90 ng/ml

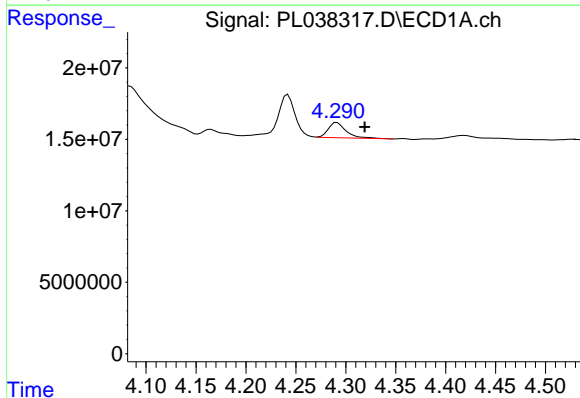


#3 gamma-BHC (Lindane)  
 R.T.: 4.084 min  
 Delta R.T.: 0.050 min  
 Response: 75357515  
 Conc: 7.19 ng/ml

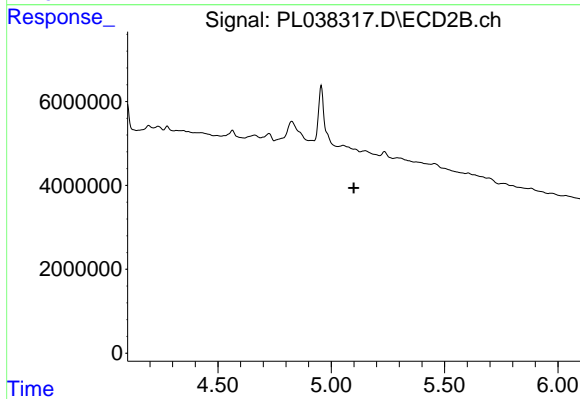
Instrument :  
 ECD\_L  
 ClientSampleId :



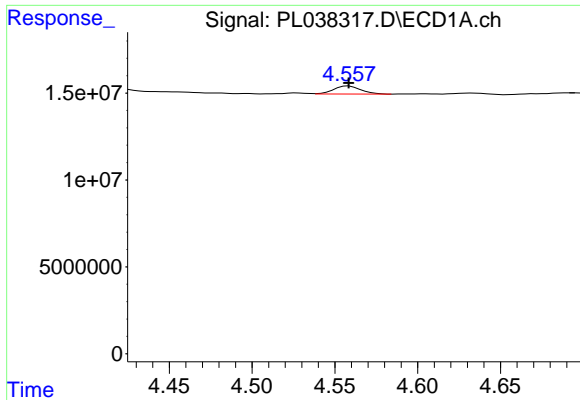
#3 gamma-BHC (Lindane)  
 R.T.: 4.564 min  
 Delta R.T.: -0.024 min  
 Response: 3354356  
 Conc: 0.93 ng/ml



#4 Heptachlor  
 R.T.: 4.291 min  
 Delta R.T.: -0.028 min  
 Response: 13192178  
 Conc: 1.24 ng/ml

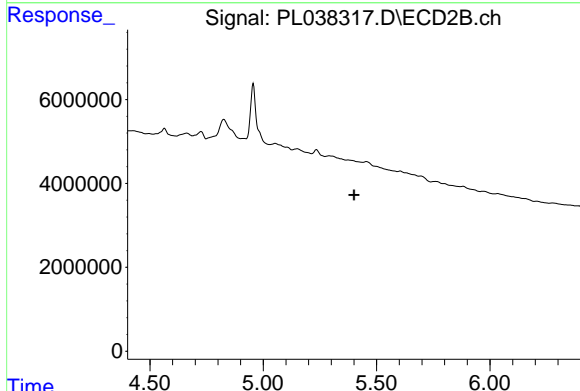


#4 Heptachlor  
 R.T.: 5.053 min  
 Delta R.T.: -0.046 min  
 Response: -861328  
 Conc: N.D.

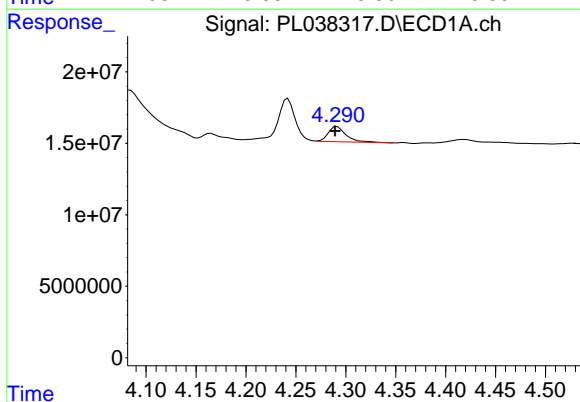


#5 Aldrin  
 R.T.: 4.558 min  
 Delta R.T.: 0.000 min  
 Response: 5249730  
 Conc: 0.50 ng/ml

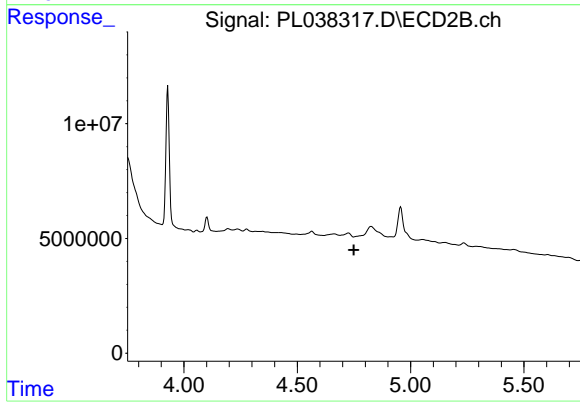
Instrument :  
 ECD\_L  
 ClientSampled :



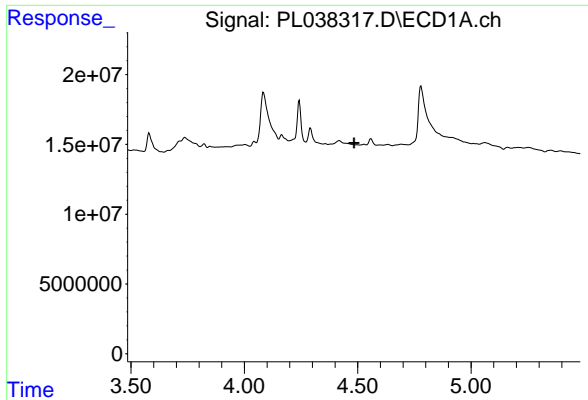
#5 Aldrin  
 R.T.: 0.000 min  
 Exp R.T. : 5.401 min  
 Response: 0  
 Conc: N.D.



#6 beta-BHC  
 R.T.: 4.291 min  
 Delta R.T.: 0.002 min  
 Response: 13192178  
 Conc: 2.79 ng/ml

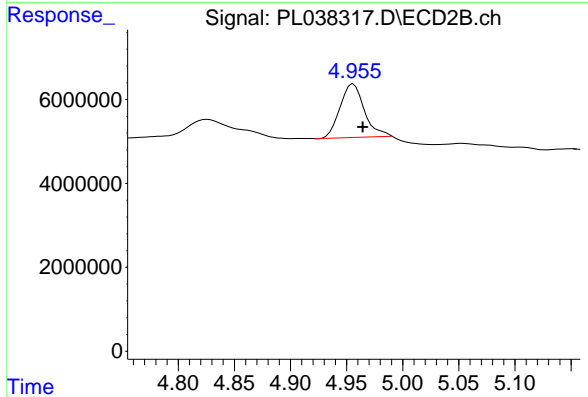


#6 beta-BHC  
 R.T.: 0.000 min  
 Exp R.T. : 4.750 min  
 Response: 0  
 Conc: N.D.

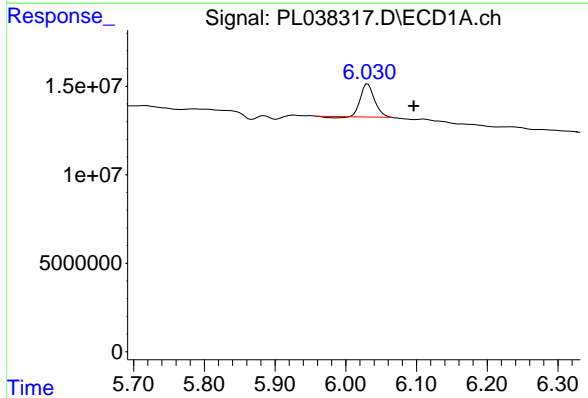


#7 delta-BHC  
 R.T.: 0.000 min  
 Exp R.T.: 4.484 min  
 Response: 0  
 Conc: N.D.

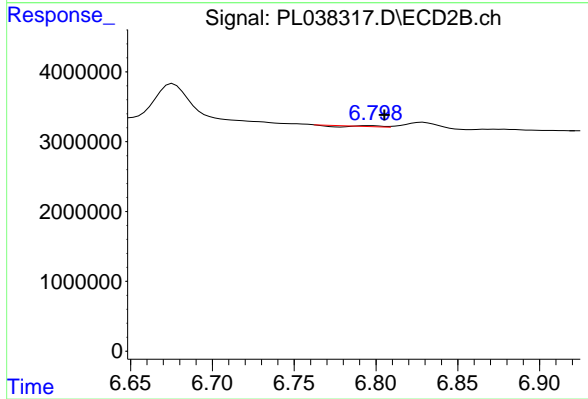
Instrument :  
 ECD\_L  
 ClientSampleId :



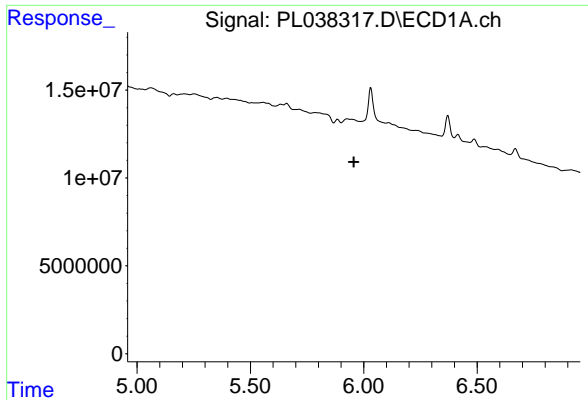
#7 delta-BHC  
 R.T.: 4.956 min  
 Delta R.T.: -0.008 min  
 Response: 19332556  
 Conc: 5.83 ng/ml



#15 Endosulfan II  
 R.T.: 6.031 min  
 Delta R.T.: -0.065 min  
 Response: 24792121  
 Conc: 3.13 ng/ml

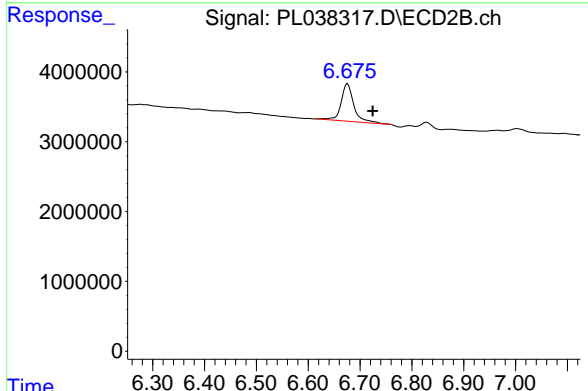


#15 Endosulfan II  
 R.T.: 6.796 min  
 Delta R.T.: -0.009 min  
 Response: 28707  
 Conc: 0.01 ng/ml

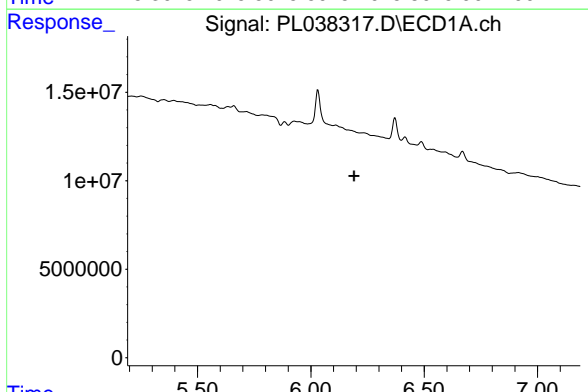


#16 4,4'-DDD  
 R.T.: 0.000 min  
 Exp R.T.: 5.956 min  
 Response: 0  
 Conc: N.D.

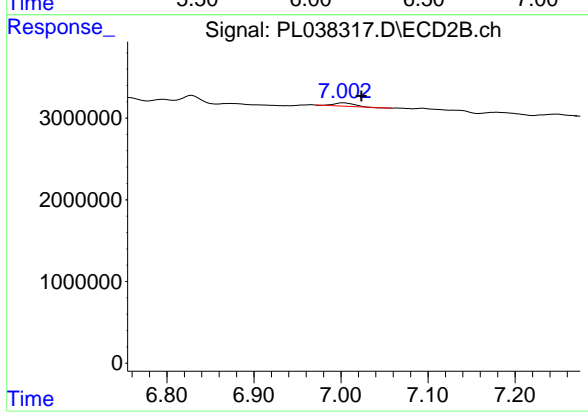
Instrument :  
 ECD\_L  
 ClientSampled :



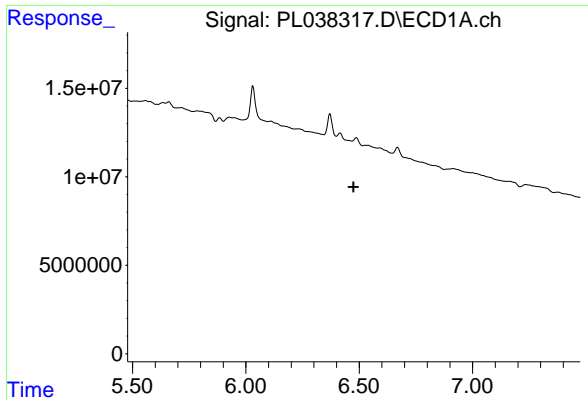
#16 4,4'-DDD  
 R.T.: 6.676 min  
 Delta R.T.: -0.048 min  
 Response: 9099835  
 Conc: 4.25 ng/ml



#17 4,4'-DDT  
 R.T.: 0.000 min  
 Exp R.T.: 6.190 min  
 Response: 0  
 Conc: N.D.

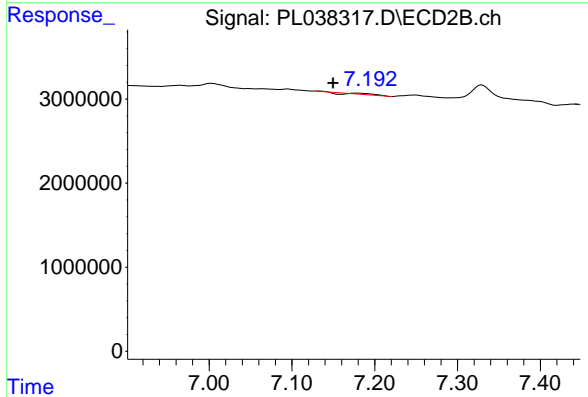


#17 4,4'-DDT  
 R.T.: 7.003 min  
 Delta R.T.: -0.021 min  
 Response: 551862  
 Conc: 0.26 ng/ml

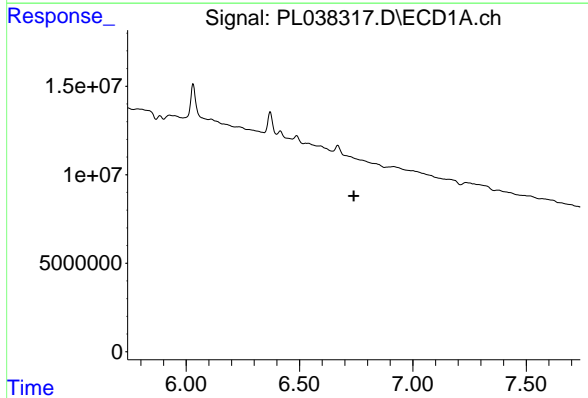


#19 Endosulfan Sulfate  
 R.T.: 0.000 min  
 Exp R.T. : 6.475 min  
 Response: 0  
 Conc: N.D.

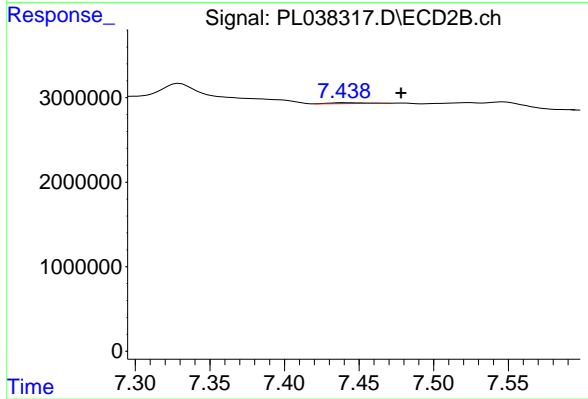
Instrument :  
 ECD\_L  
 ClientSampleId :



#19 Endosulfan Sulfate  
 R.T.: 7.178 min  
 Delta R.T.: 0.029 min  
 Response: 101683  
 Conc: 0.05 ng/ml

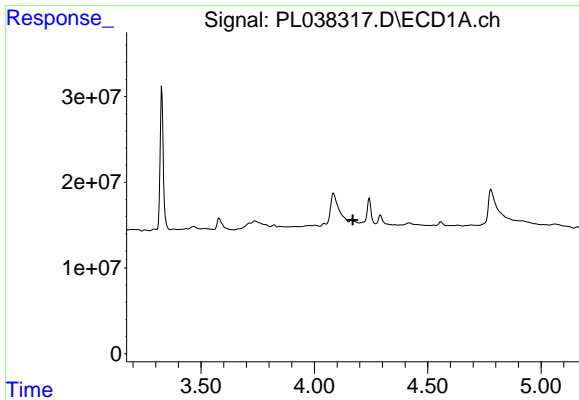


#20 Methoxychlor  
 R.T.: 0.000 min  
 Exp R.T. : 6.739 min  
 Response: 0  
 Conc: N.D.



#20 Methoxychlor  
 R.T.: 7.441 min  
 Delta R.T.: -0.037 min  
 Response: 152224  
 Conc: 0.13 ng/ml

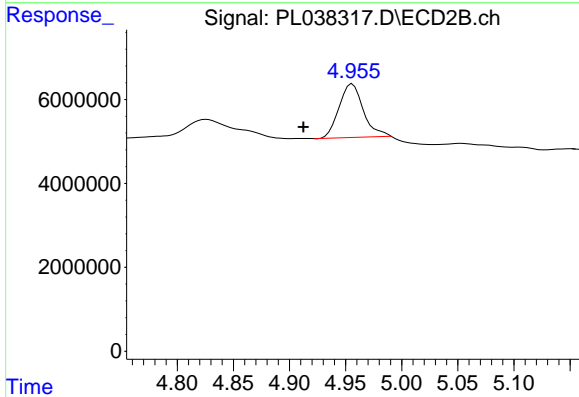




#23 Chlordane-1

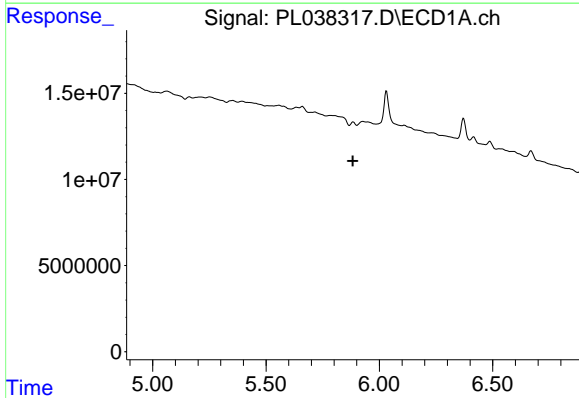
R.T.: 0.000 min  
 Exp R.T. : 4.169 min  
 Response: 0  
 Conc: N.D.

Instrument :  
 ECD\_L  
 ClientSampleId :



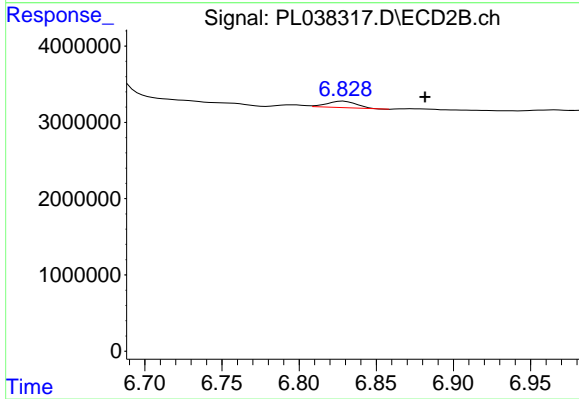
#23 Chlordane-1

R.T.: 4.956 min  
 Delta R.T.: 0.044 min  
 Response: 19332556  
 Conc: 166.83 ng/ml



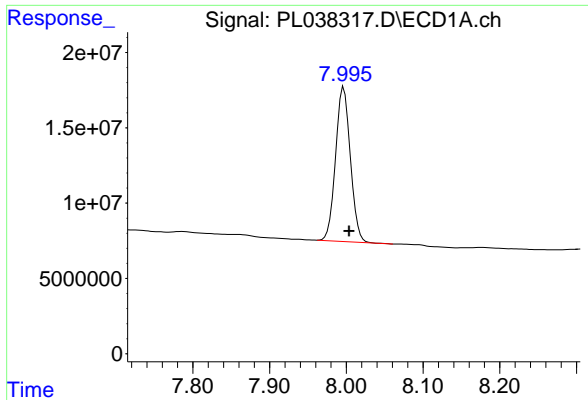
#27 Chlordane-5

R.T.: 0.000 min  
 Exp R.T. : 5.883 min  
 Response: 0  
 Conc: N.D.



#27 Chlordane-5

R.T.: 6.829 min  
 Delta R.T.: -0.053 min  
 Response: 1131578  
 Conc: 12.63 ng/ml



#28 Decachlorobiphenyl

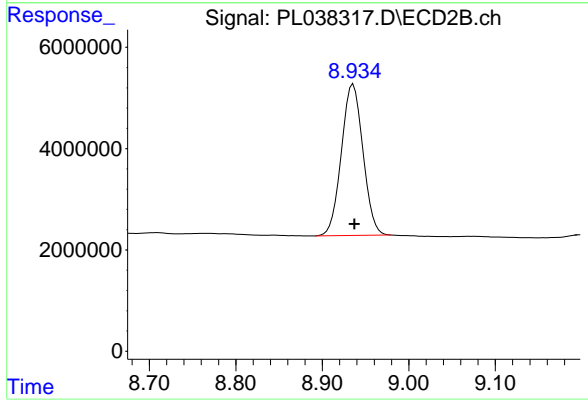
R.T.: 7.997 min

Delta R.T.: -0.007 min

Response: 136924736

Conc: 18.05 ng/ml

Instrument :  
ECD\_L  
ClientSampleId :



#28 Decachlorobiphenyl

R.T.: 8.936 min

Delta R.T.: -0.002 min

Response: 51570615

Conc: 21.10 ng/ml