

Data Path : Z:\pestpcbsrv\HPCHEM1\ECD_L\Data\PL072418\
 Data File : PL038496.D
 Signal(s) : Signal #1: ECD1A.ch Signal #2: ECD2B.ch
 Acq On : 24 Jul 2018 18:39
 Operator : AJ\SJ
 Sample : J4121-08
 Misc :
 ALS Vial : 27 Sample Multiplier: 1

Instrument :
 ECD_L
 ClientSampleId :
 SB-7(8-10)

Integration File signal 1: autoint1.e
 Integration File signal 2: autoint2.e
 Quant Time: Jul 25 04:01:06 2018
 Quant Method : Z:\PESTPCBSRV\HPCHEM1\ECD_L\methods\PL071318.M
 Quant Title : GC Extractables
 QLast Update : Sat Jul 14 00:12:12 2018
 Response via : Initial Calibration
 Integrator: ChemStation

Volume Inj. : 2 µl
 Signal #1 Phase : ZB-MR1 Signal #2 Phase: ZB-MR2
 Signal #1 Info : 30M x 0.32mm x0.5 Signal #2 Info : 30M x 0.32mm x0.25µm

Compound	RT#1	RT#2	Resp#1	Resp#2	ng/ml	ng/ml

System Monitoring Compounds						
1) SA Tetrachlo...	3.326	3.928	79463256	32120511	10.671	12.237
28) SA Decachlor...	7.995	8.935	69237810	29877543	9.127	12.223 #

Target Compounds

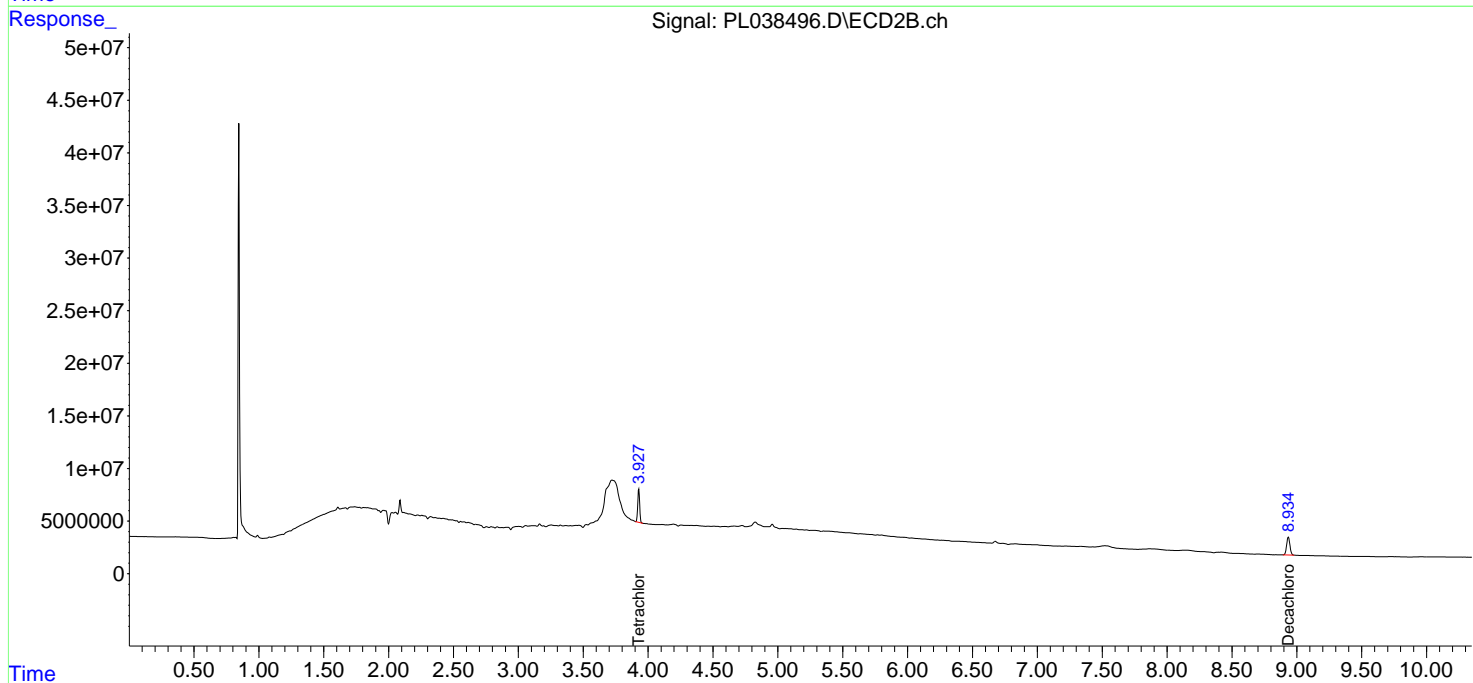
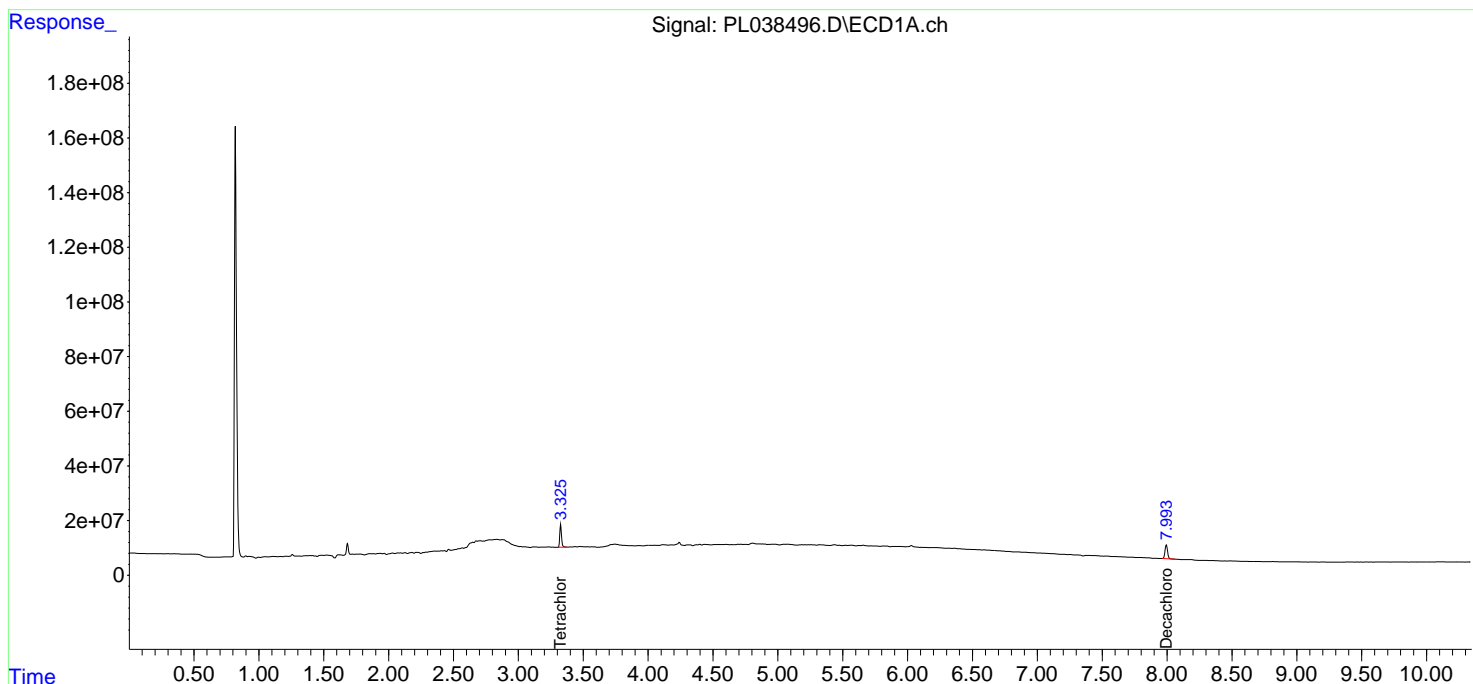
(f)=RT Delta > 1/2 Window (#)=Amounts differ by > 25% (m)=manual int.

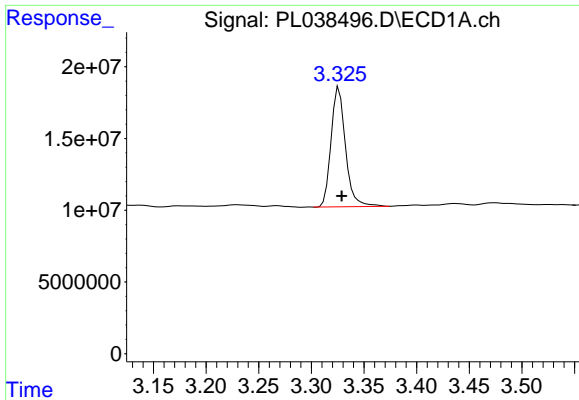
Data Path : Z:\pestpcbsrv\HPCHEM1\ECD_L\Data\PL072418\
 Data File : PL038496.D
 Signal(s) : Signal #1: ECD1A.ch Signal #2: ECD2B.ch
 Acq On : 24 Jul 2018 18:39
 Operator : AJ\SJ
 Sample : J4121-08
 Misc :
 ALS Vial : 27 Sample Multiplier: 1

Instrument :
 ECD_L
 ClientSampled :
 SB-7(8-10)

Integration File signal 1: autoint1.e
 Integration File signal 2: autoint2.e
 Quant Time: Jul 25 04:01:06 2018
 Quant Method : Z:\PESTPCBSRV\HPCHEM1\ECD_L\methods\PL071318.M
 Quant Title : GC Extractables
 QLast Update : Sat Jul 14 00:12:12 2018
 Response via : Initial Calibration
 Integrator: ChemStation

Volume Inj. : 2 µl
 Signal #1 Phase : ZB-MR1 Signal #2 Phase: ZB-MR2
 Signal #1 Info : 30M x 0.32mm x0.5 Signal #2 Info : 30M x 0.32mm x0.25µm

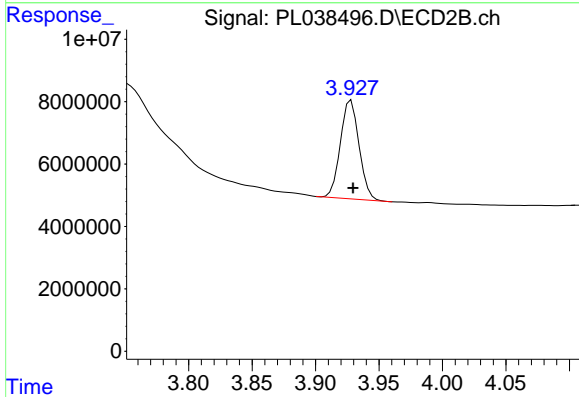




#1 Tetrachloro-m-xylene

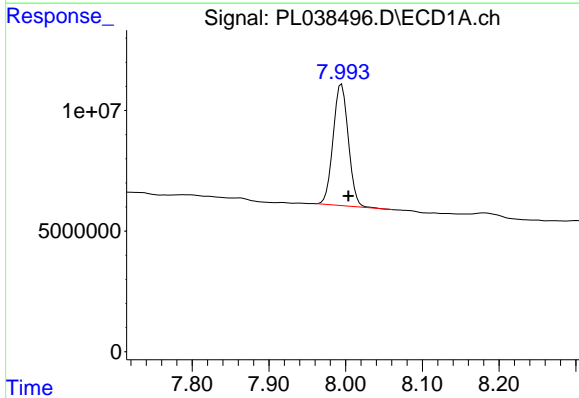
R.T.: 3.326 min
 Delta R.T.: -0.003 min
 Response: 79463256
 Conc: 10.67 ng/ml

Instrument :
 ECD_L
 ClientSampleId :
 SB-7(8-10)



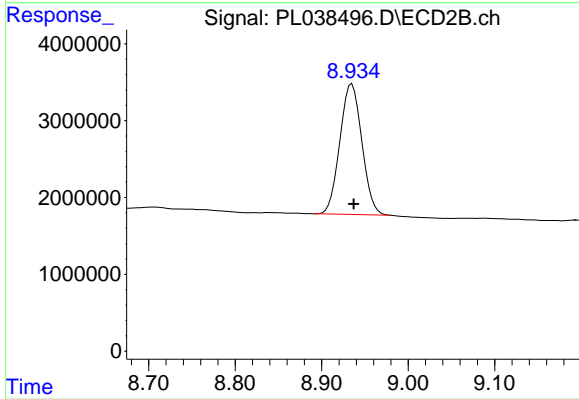
#1 Tetrachloro-m-xylene

R.T.: 3.928 min
 Delta R.T.: -0.002 min
 Response: 32120511
 Conc: 12.24 ng/ml



#28 Decachlorobiphenyl

R.T.: 7.995 min
 Delta R.T.: -0.009 min
 Response: 69237810
 Conc: 9.13 ng/ml



#28 Decachlorobiphenyl

R.T.: 8.935 min
 Delta R.T.: -0.002 min
 Response: 29877543
 Conc: 12.22 ng/ml