

Data Path : Z:\pestpcbsrv\HPCHEM1\ECD_L\Data\PL080921\
 Data File : PL068832.D
 Signal(s) : Signal #1: ECD1A.ch Signal #2: ECD2B.ch
 Acq On : 09 Aug 2021 13:38
 Operator : AR\AJ
 Sample : M3318-03
 Misc :
 ALS Vial : 10 Sample Multiplier: 1

Instrument :
 ECD_L
 ClientSampleId :
 20210586-COM-9

Integration File signal 1: autoint1.e
 Integration File signal 2: autoint2.e
 Quant Time: Aug 10 08:30:19 2021
 Quant Method : Z:\pestpcbsrv\HPCHEM1\ECD_L\methods\PL080521.M
 Quant Title : GC Extractables
 QLast Update : Fri Aug 06 03:02:43 2021
 Response via : Initial Calibration
 Integrator: ChemStation

Volume Inj. : 1 µl
 Signal #1 Phase : ZB-MR2 Signal #2 Phase: ZB-MR1
 Signal #1 Info : 30M x 0.32mm x0.2 Signal #2 Info : 30M x 0.32mm x0.5µm

Compound	RT#1	RT#2	Resp#1	Resp#2	ng/ml	ng/ml

System Monitoring Compounds						
1) SA Tetrachlo...	4.639	5.570	8146176	20437602	19.694	20.129
28) SA Decachlor...	10.412	11.495	9890956	16968972	17.211	17.489

Target Compounds

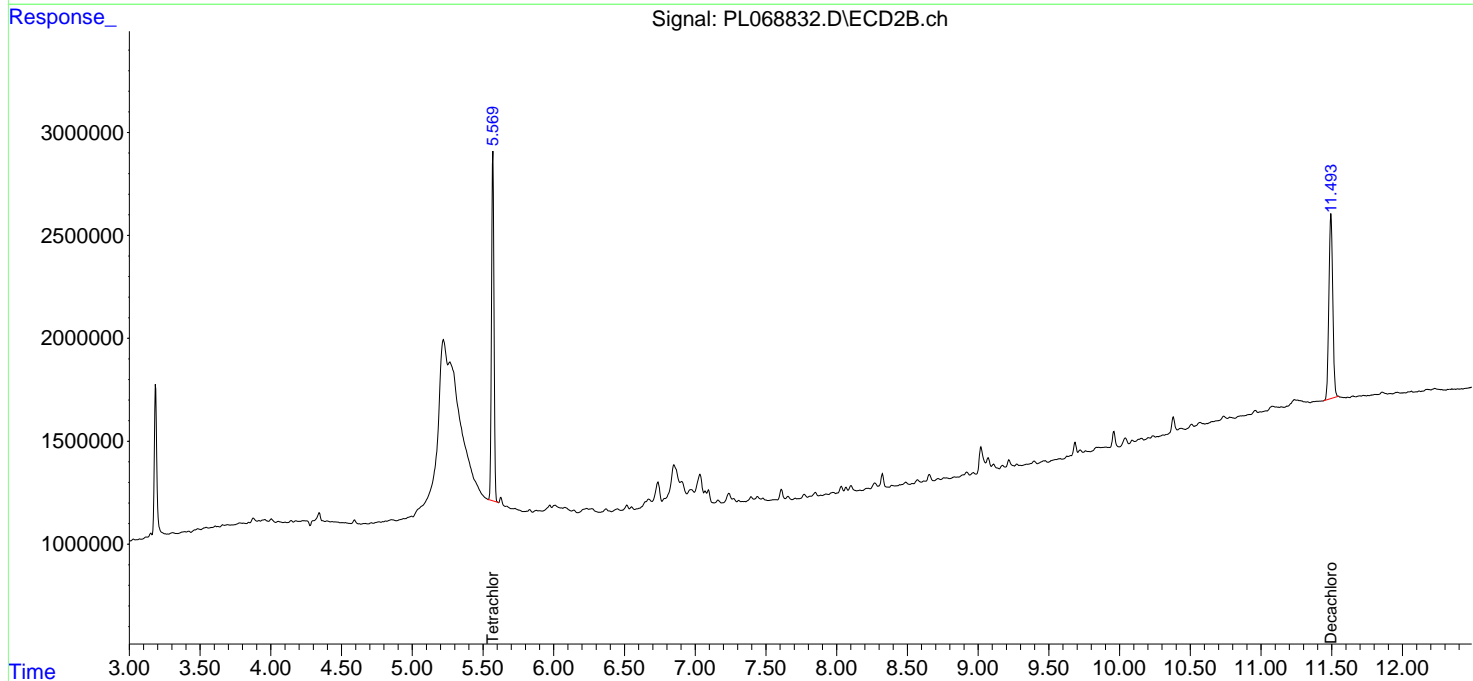
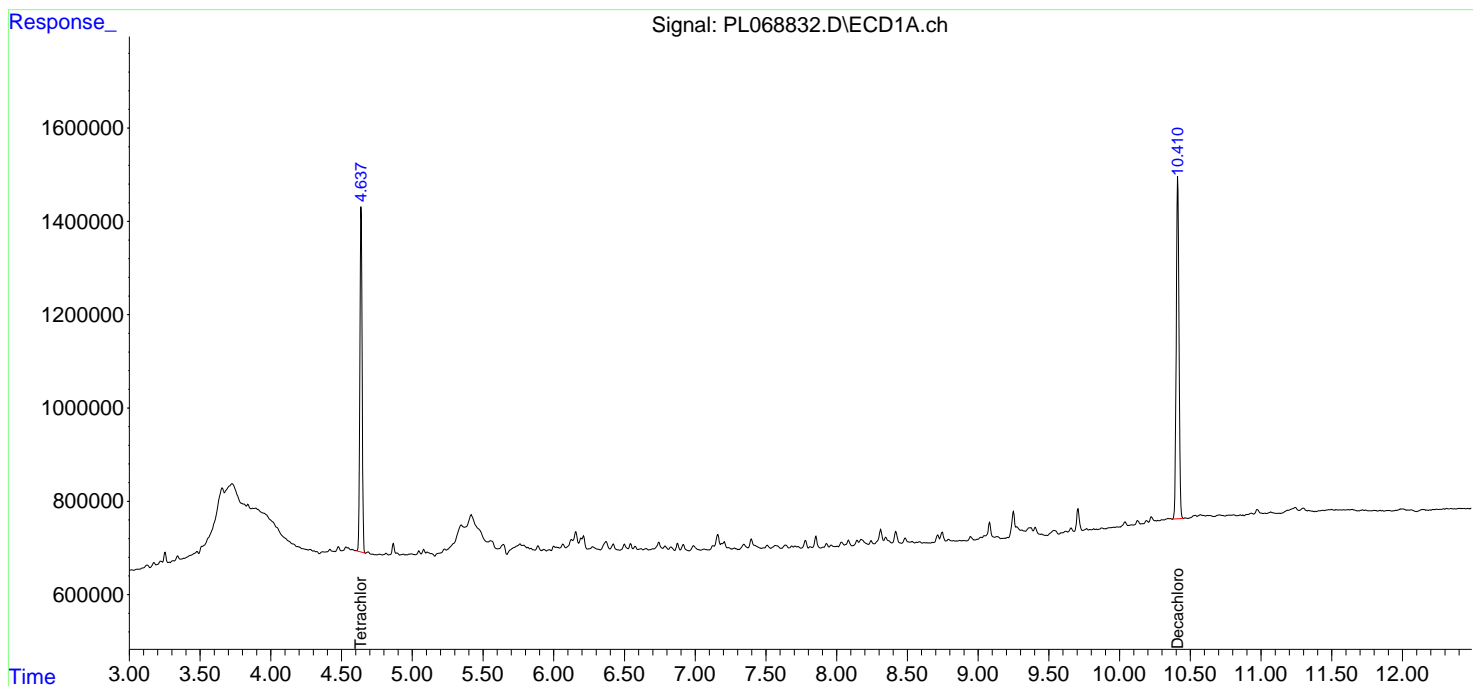
(f)=RT Delta > 1/2 Window (#)=Amounts differ by > 25% (m)=manual int.

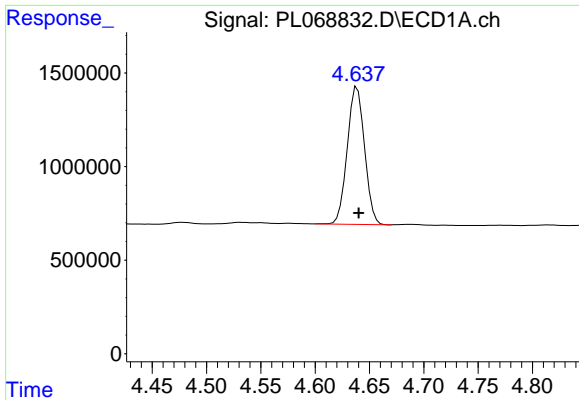
Data Path : Z:\pestpcbsrv\HPCHEM1\ECD_L\Data\PL080921\
 Data File : PL068832.D
 Signal(s) : Signal #1: ECD1A.ch Signal #2: ECD2B.ch
 Acq On : 09 Aug 2021 13:38
 Operator : AR\AJ
 Sample : M3318-03
 Misc :
 ALS Vial : 10 Sample Multiplier: 1

Instrument :
 ECD_L
 ClientSampleId :
 20210586-COM-9

Integration File signal 1: autoint1.e
 Integration File signal 2: autoint2.e
 Quant Time: Aug 10 08:30:19 2021
 Quant Method : Z:\pestpcbsrv\HPCHEM1\ECD_L\methods\PL080521.M
 Quant Title : GC Extractables
 QLast Update : Fri Aug 06 03:02:43 2021
 Response via : Initial Calibration
 Integrator: ChemStation

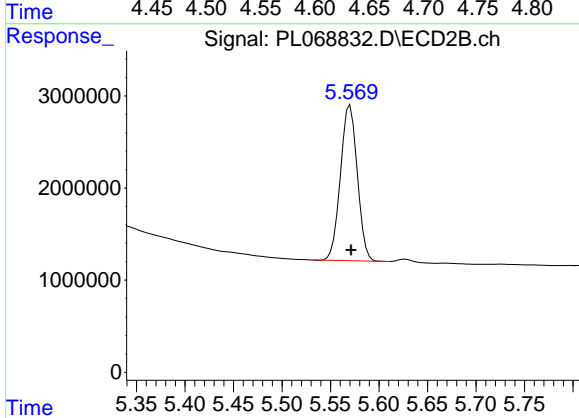
Volume Inj. : 1 µl
 Signal #1 Phase : ZB-MR2 Signal #2 Phase: ZB-MR1
 Signal #1 Info : 30M x 0.32mm x0.2 Signal #2 Info : 30M x 0.32mm x0.5µm



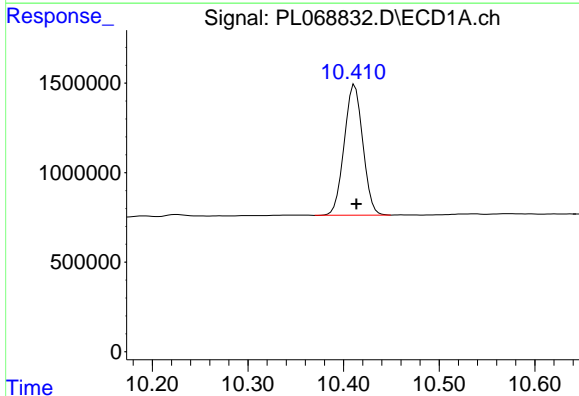


#1 Tetrachloro-m-xylene
 R.T.: 4.639 min
 Delta R.T.: -0.001 min
 Response: 8146176
 Conc: 19.69 ng/ml

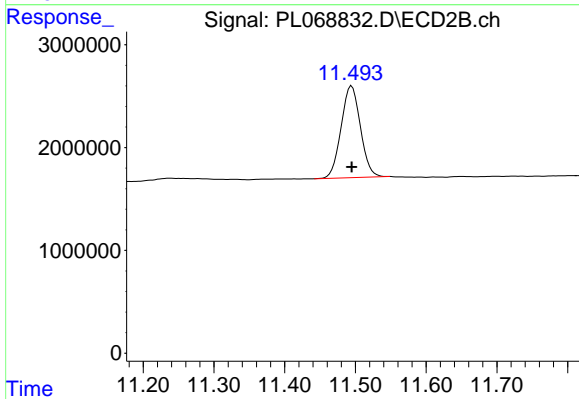
Instrument :
 ECD_L
 ClientSampleId :
 20210586-COM-9



#1 Tetrachloro-m-xylene
 R.T.: 5.570 min
 Delta R.T.: 0.000 min
 Response: 20437602
 Conc: 20.13 ng/ml



#28 Decachlorobiphenyl
 R.T.: 10.412 min
 Delta R.T.: -0.002 min
 Response: 9890956
 Conc: 17.21 ng/ml



#28 Decachlorobiphenyl
 R.T.: 11.495 min
 Delta R.T.: 0.000 min
 Response: 16968972
 Conc: 17.49 ng/ml