

Data Path : Z:\pestpcbsrv\HPCHEM1\ECD_L\Data\PL081124\
 Data File : PL090947.D
 Signal(s) : Signal #1: ECD1A.ch Signal #2: ECD2B.ch
 Acq On : 10 Aug 2024 04:51
 Operator : AR\AJ
 Sample : PB162610BS
 Misc :
 ALS Vial : 6 Sample Multiplier: 1

Instrument :
 ECD_L
 ClientSampleId :
 PB162610BS

Integration File signal 1: autoint1.e
 Integration File signal 2: autoint2.e
 Quant Time: Aug 10 05:12:28 2024
 Quant Method : Z:\pestpcbsrv\HPCHEM1\ECD_L\methods\PL080524.M
 Quant Title : GC Extractables
 QLast Update : Tue Aug 06 10:55:36 2024
 Response via : Initial Calibration
 Integrator: ChemStation

Volume Inj. : 1 µl
 Signal #1 Phase : ZB-MR2 Signal #2 Phase: ZB-MR1
 Signal #1 Info : 30M x 0.32mm x0.2 Signal #2 Info : 30M x 0.32mm x0.5µm

Compound	RT#1	RT#2	Resp#1	Resp#2	ng/ml	ng/ml

System Monitoring Compounds						
1) SA Tetrachlo...	3.546	2.787	40033083	34180007	20.676	19.771
28) SA Decachlor...	9.057	7.926	32638899	35762015	22.717	21.425
Target Compounds						
2) A alpha-BHC	4.001	3.290	144.1E6	135.3E6	52.151	54.937
3) MA gamma-BHC...	4.334	3.620	127.7E6	128.4E6	48.560	54.859
4) MA Heptachlor	4.922	3.961	130.1E6	127.7E6	52.626	55.070
5) MB Aldrin	5.264	4.241	124.5E6	122.9E6	51.803	55.417
6) B beta-BHC	4.530	3.919	65618755	56429495	52.124	53.053
7) B delta-BHC	4.777	4.149	129.9E6	124.5E6	51.886	55.703
8) B Heptachlo...	5.689	4.743	118.0E6	111.3E6	51.906	54.592
9) A Endosulfan I	6.074	5.113	109.3E6	104.7E6	52.150	54.217
10) B gamma-Chl...	5.945	4.993	117.1E6	115.9E6	51.831	54.248
11) B alpha-Chl...	6.024	5.057	116.5E6	115.3E6	52.021	54.049
12) B 4,4'-DDE	6.197	5.246	104.8E6	103.4E6	52.888	55.133
13) MA Dieldrin	6.349	5.377	115.6E6	113.1E6	52.699	54.764
14) MA Endrin	6.579	5.652	96758890	100.8E6	52.832	55.174
15) B Endosulfa...	6.797	5.947	103.7E6	99566419	51.704	54.819
16) A 4,4'-DDD	6.713	5.800	87413725	84945232	53.024	54.743
17) MA 4,4'-DDT	7.027	6.050	95750700	91191766	53.709	54.992
18) B Endrin al...	6.927	6.125	81038568	77018681	53.809	54.399
19) B Endosulfa...	7.161	6.348	95421625	95693219	53.201	54.817
20) A Methoxychlor	7.502	6.625	50991488	49980735	53.437	54.148
21) B Endrin ke...	7.646	6.853	106.2E6	109.6E6	53.584	55.297
22) Mirex	8.119	7.035	83638426	90664727	53.805	53.989
23) Chlordane-1	0.000	3.808f	0	87765	N.D.	1.302 #
24) Chlordane-2	0.000	4.377	0	1696188	N.D.	20.393 #
25) Chlordane-3	5.945	4.993	117.1E6	115.9E6	356.129	517.361 #
26) Chlordane-4	6.024	5.057	116.5E6	115.3E6	290.718	538.970 #
27) Chlordane-5	0.000	5.747f	0	298917	N.D.	4.473 #

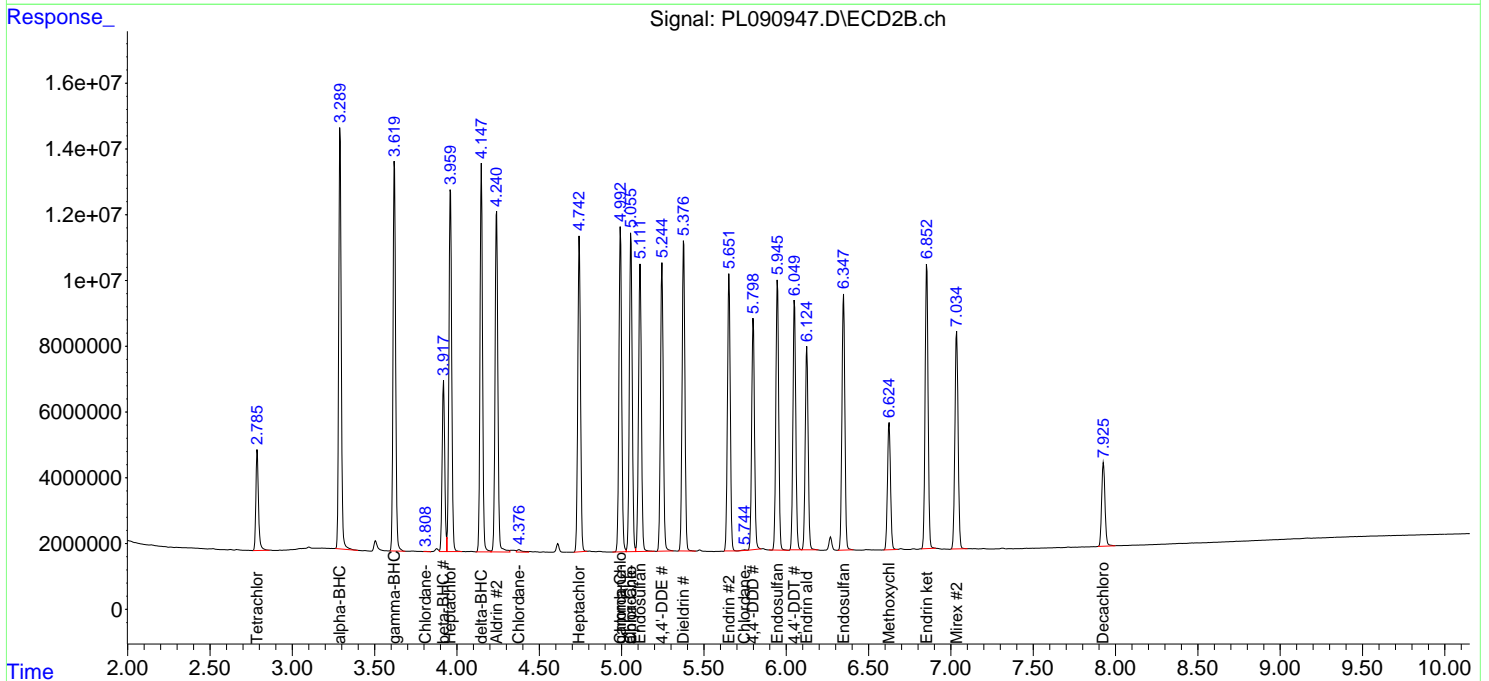
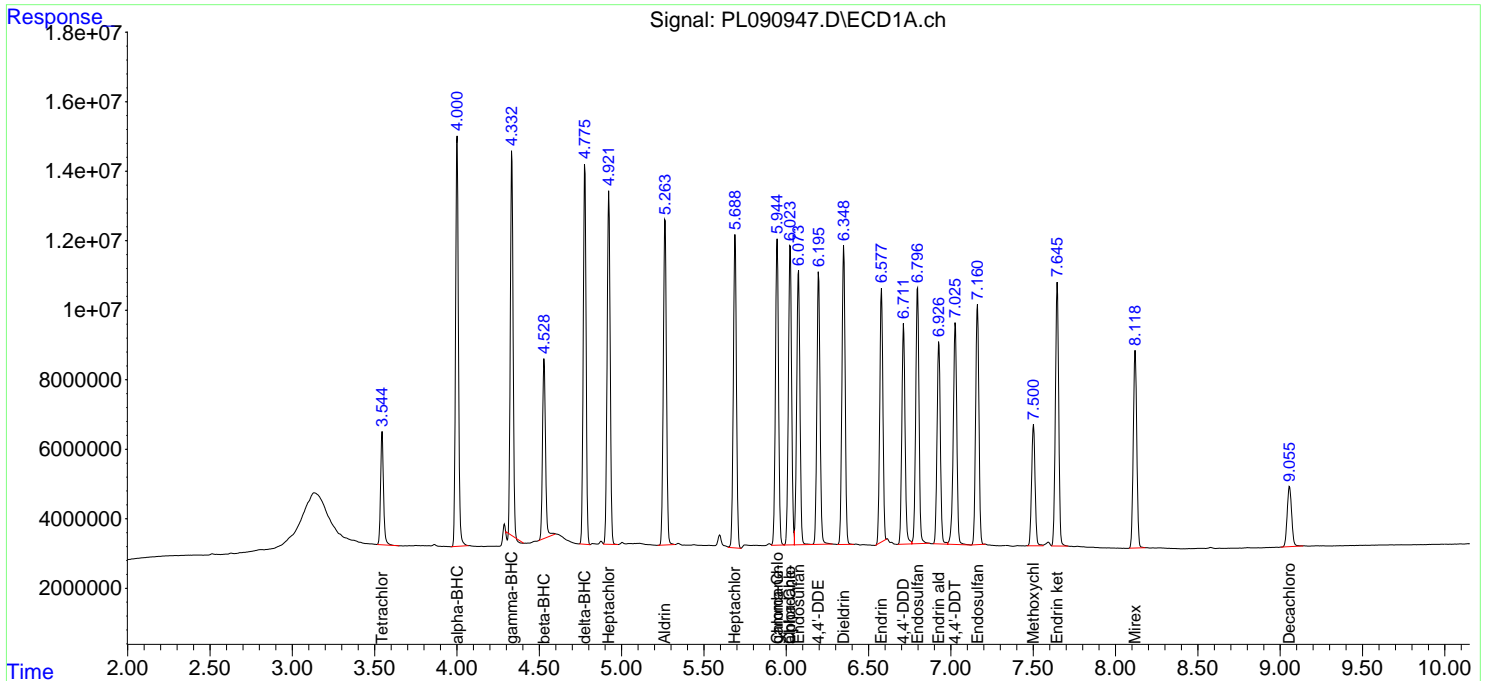
(f)=RT Delta > 1/2 Window (#)=Amounts differ by > 25% (m)=manual int.

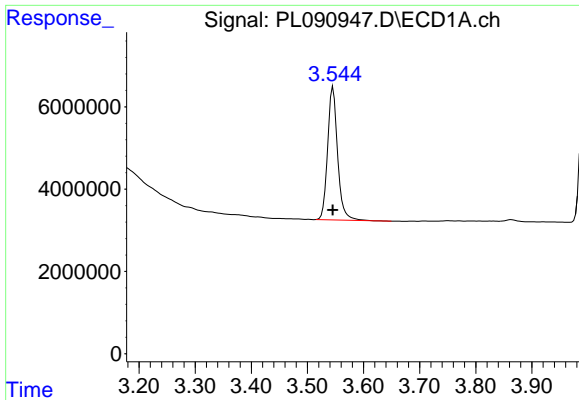
Data Path : Z:\pestpcbsrv\HPCHEM1\ECD_L\Data\PL081124\
 Data File : PL090947.D
 Signal(s) : Signal #1: ECD1A.ch Signal #2: ECD2B.ch
 Acq On : 10 Aug 2024 04:51
 Operator : AR\AJ
 Sample : PB162610BS
 Misc :
 ALS Vial : 6 Sample Multiplier: 1

Instrument :
 ECD_L
 ClientSampleId :
 PB162610BS

Integration File signal 1: autoint1.e
 Integration File signal 2: autoint2.e
 Quant Time: Aug 10 05:12:28 2024
 Quant Method : Z:\pestpcbsrv\HPCHEM1\ECD_L\methods\PL080524.M
 Quant Title : GC Extractables
 QLast Update : Tue Aug 06 10:55:36 2024
 Response via : Initial Calibration
 Integrator: ChemStation

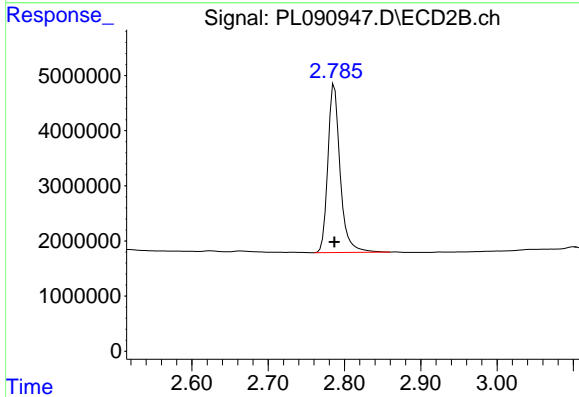
Volume Inj. : 1 µl
 Signal #1 Phase : ZB-MR2 Signal #2 Phase: ZB-MR1
 Signal #1 Info : 30M x 0.32mm x0.2 Signal #2 Info : 30M x 0.32mm x0.5µm



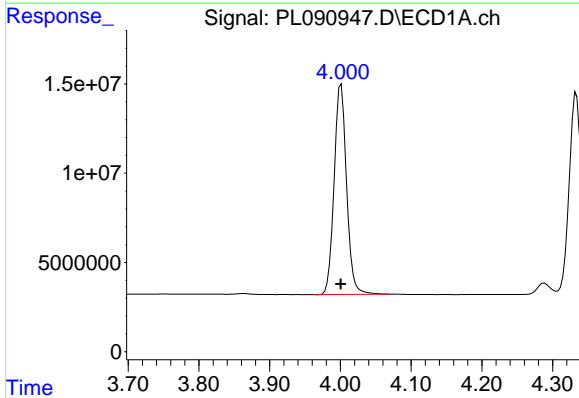


#1 Tetrachloro-m-xylene
 R.T.: 3.546 min
 Delta R.T.: 0.000 min
 Response: 40033083
 Conc: 20.68 ng/ml

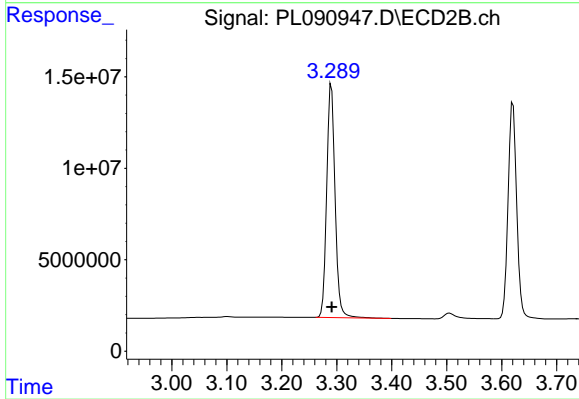
Instrument :
 ECD_L
 ClientSampleId :
 PB162610BS



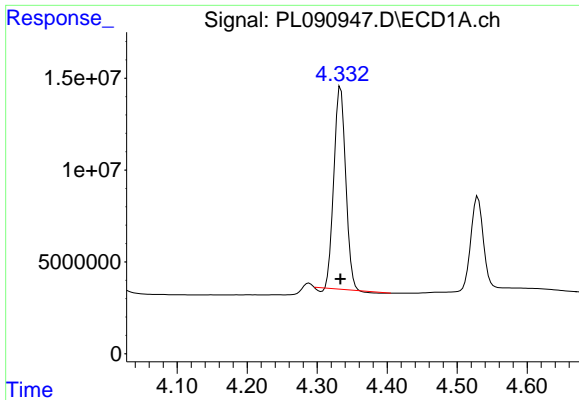
#1 Tetrachloro-m-xylene
 R.T.: 2.787 min
 Delta R.T.: 0.000 min
 Response: 34180007
 Conc: 19.77 ng/ml



#2 alpha-BHC
 R.T.: 4.001 min
 Delta R.T.: 0.000 min
 Response: 144051764
 Conc: 52.15 ng/ml



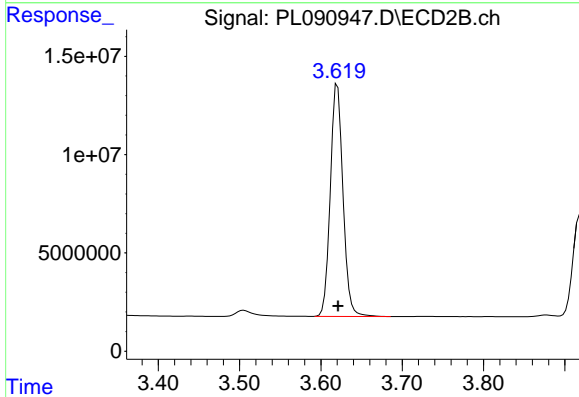
#2 alpha-BHC
 R.T.: 3.290 min
 Delta R.T.: 0.000 min
 Response: 135334938
 Conc: 54.94 ng/ml



#3 gamma-BHC (Lindane)

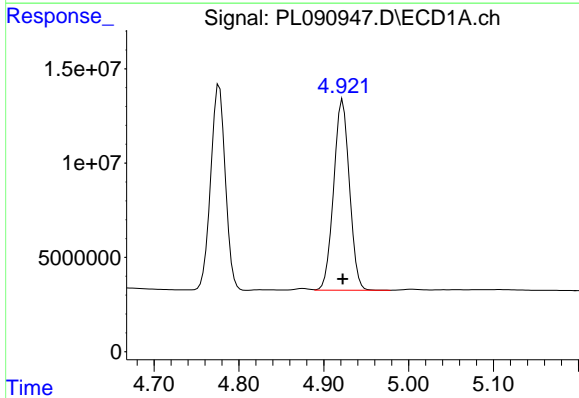
R.T.: 4.334 min
Delta R.T.: 0.000 min
Response: 127716831
Conc: 48.56 ng/ml

Instrument :
ECD_L
ClientSampleId :
PB162610BS



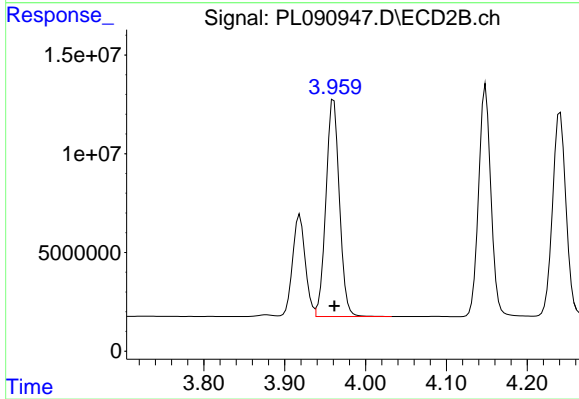
#3 gamma-BHC (Lindane)

R.T.: 3.620 min
Delta R.T.: 0.000 min
Response: 128437584
Conc: 54.86 ng/ml



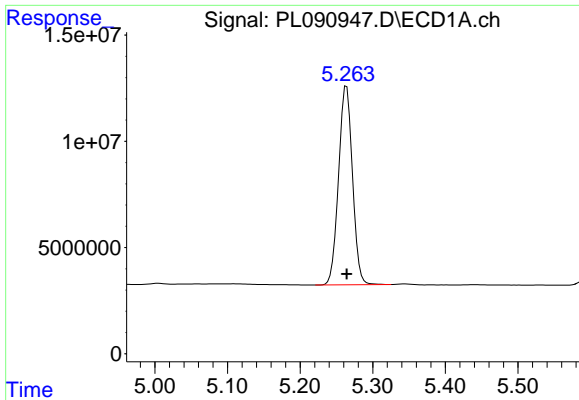
#4 Heptachlor

R.T.: 4.922 min
Delta R.T.: 0.000 min
Response: 130149389
Conc: 52.63 ng/ml



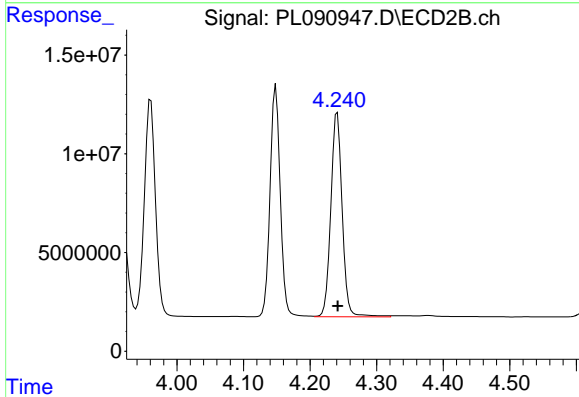
#4 Heptachlor

R.T.: 3.961 min
Delta R.T.: 0.000 min
Response: 127682803
Conc: 55.07 ng/ml

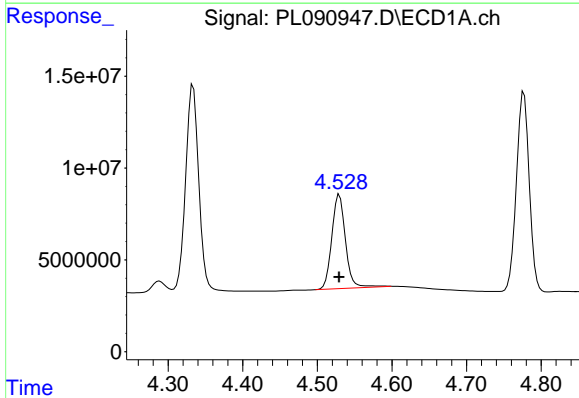


#5 Aldrin
 R.T.: 5.264 min
 Delta R.T.: 0.000 min
 Response: 124524311
 Conc: 51.80 ng/ml

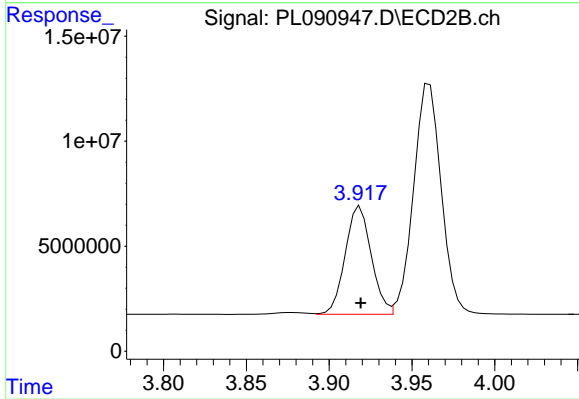
Instrument :
 ECD_L
 ClientSampleId :
 PB162610BS



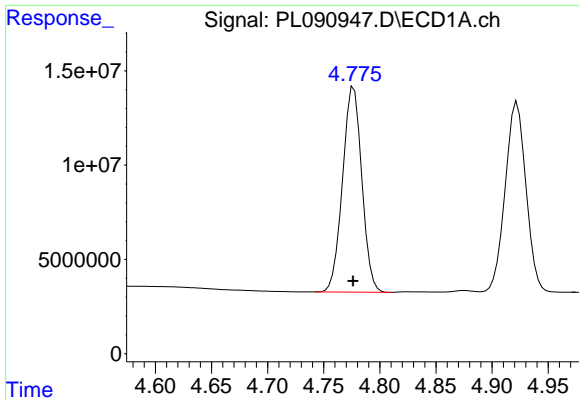
#5 Aldrin
 R.T.: 4.241 min
 Delta R.T.: 0.000 min
 Response: 122865391
 Conc: 55.42 ng/ml



#6 beta-BHC
 R.T.: 4.530 min
 Delta R.T.: 0.000 min
 Response: 65618755
 Conc: 52.12 ng/ml



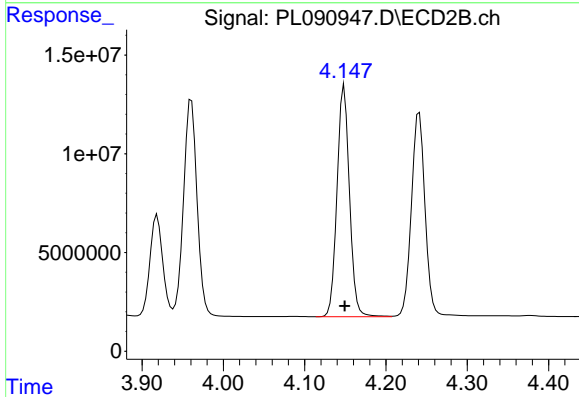
#6 beta-BHC
 R.T.: 3.919 min
 Delta R.T.: 0.000 min
 Response: 56429495
 Conc: 53.05 ng/ml



#7 delta-BHC

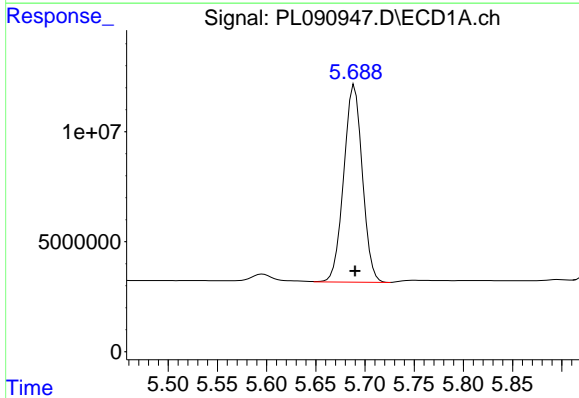
R.T.: 4.777 min
 Delta R.T.: 0.000 min
 Response: 129896253
 Conc: 51.89 ng/ml

Instrument :
 ECD_L
 ClientSampleId :
 PB162610BS



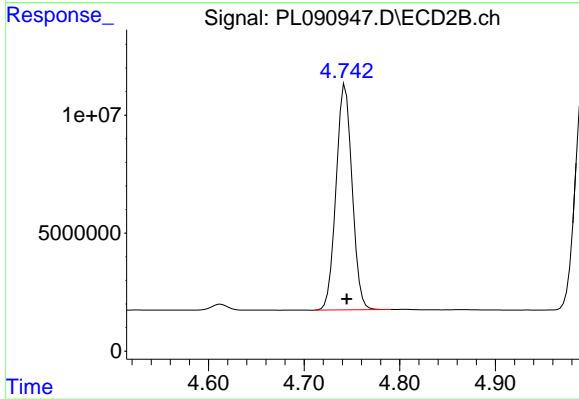
#7 delta-BHC

R.T.: 4.149 min
 Delta R.T.: 0.000 min
 Response: 124483397
 Conc: 55.70 ng/ml



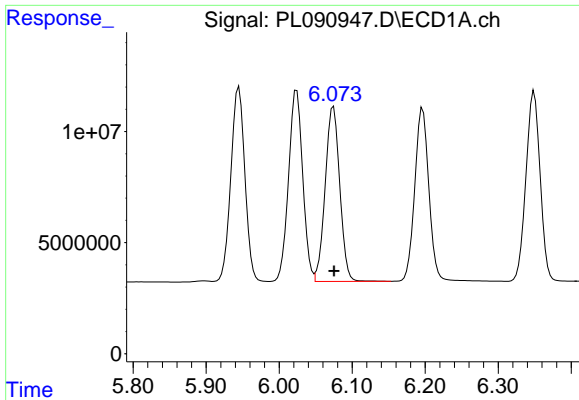
#8 Heptachlor epoxide

R.T.: 5.689 min
 Delta R.T.: 0.000 min
 Response: 117953037
 Conc: 51.91 ng/ml



#8 Heptachlor epoxide

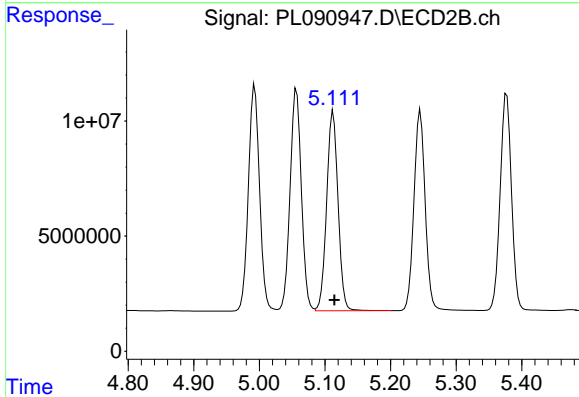
R.T.: 4.743 min
 Delta R.T.: -0.002 min
 Response: 111275570
 Conc: 54.59 ng/ml



#9 Endosulfan I

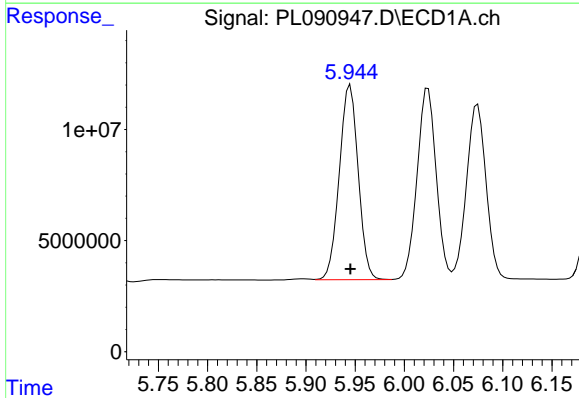
R.T.: 6.074 min
 Delta R.T.: 0.000 min
 Response: 109316672
 Conc: 52.15 ng/ml

Instrument :
 ECD_L
 ClientSampleId :
 PB162610BS



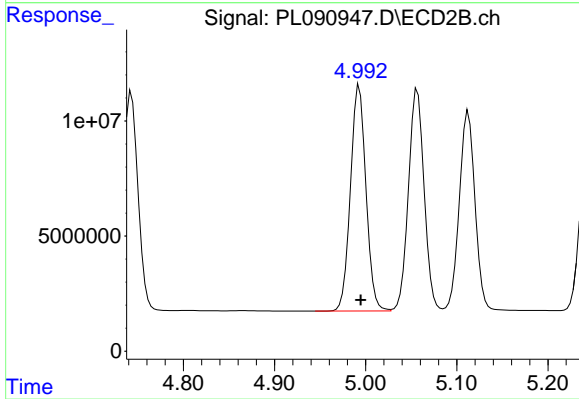
#9 Endosulfan I

R.T.: 5.113 min
 Delta R.T.: -0.002 min
 Response: 104698188
 Conc: 54.22 ng/ml



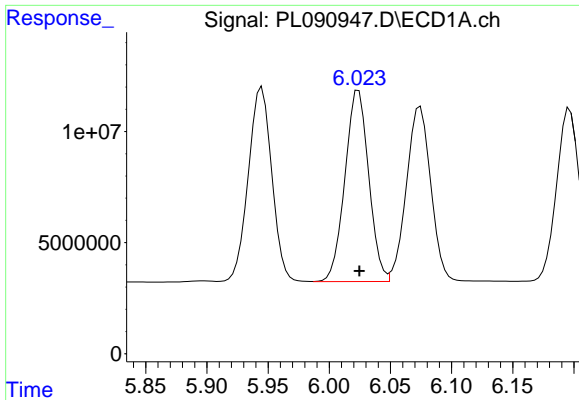
#10 gamma-Chlordane

R.T.: 5.945 min
 Delta R.T.: 0.000 min
 Response: 117113850
 Conc: 51.83 ng/ml



#10 gamma-Chlordane

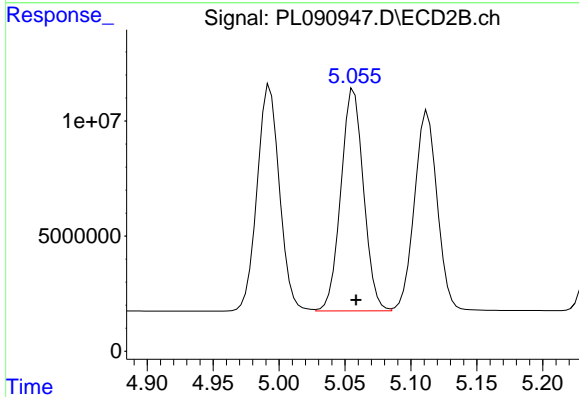
R.T.: 4.993 min
 Delta R.T.: -0.002 min
 Response: 115852649
 Conc: 54.25 ng/ml



#11 alpha-Chlordane

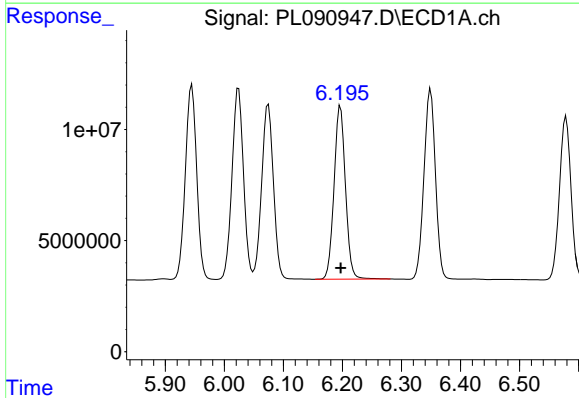
R.T.: 6.024 min
 Delta R.T.: 0.000 min
 Response: 116503621
 Conc: 52.02 ng/ml

Instrument :
 ECD_L
 ClientSampleId :
 PB162610BS



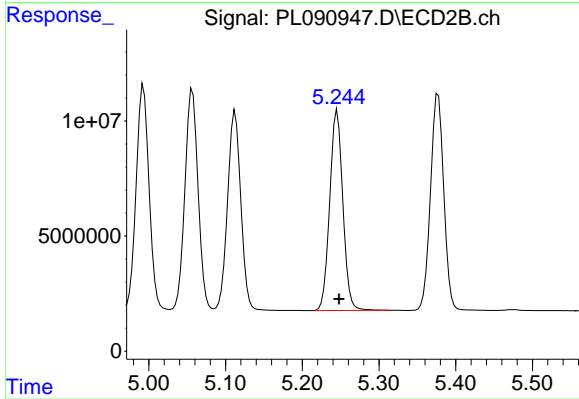
#11 alpha-Chlordane

R.T.: 5.057 min
 Delta R.T.: -0.002 min
 Response: 115317495
 Conc: 54.05 ng/ml



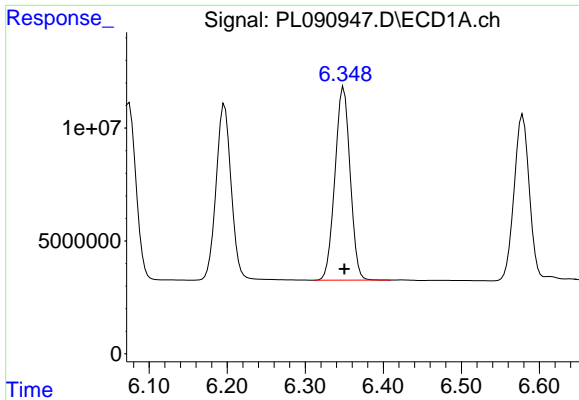
#12 4,4'-DDE

R.T.: 6.197 min
 Delta R.T.: 0.000 min
 Response: 104843749
 Conc: 52.89 ng/ml



#12 4,4'-DDE

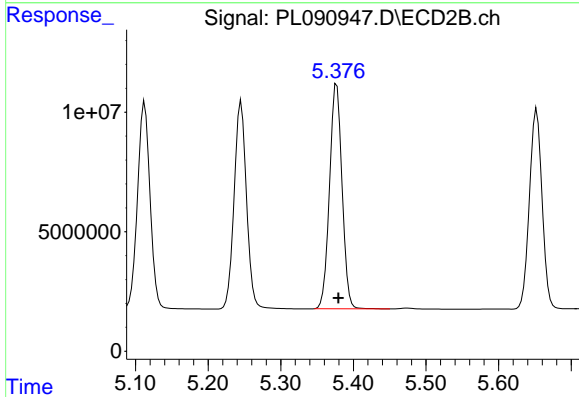
R.T.: 5.246 min
 Delta R.T.: -0.002 min
 Response: 103423216
 Conc: 55.13 ng/ml



#13 Dieldrin

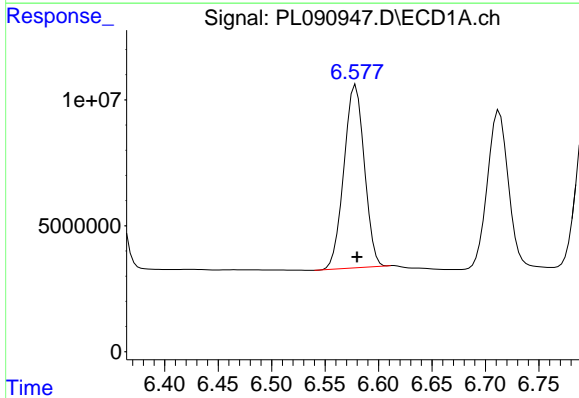
R.T.: 6.349 min
 Delta R.T.: 0.000 min
 Response: 115586709
 Conc: 52.70 ng/ml

Instrument :
 ECD_L
 ClientSampleId :
 PB162610BS



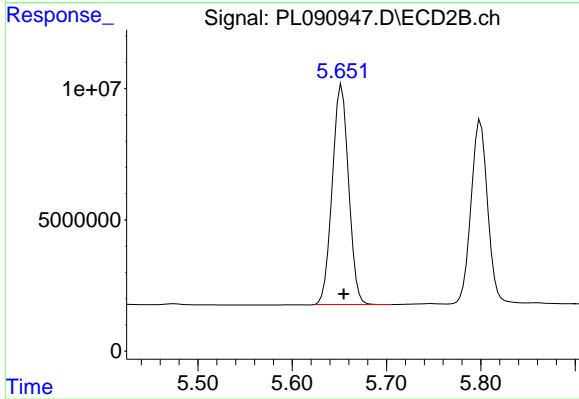
#13 Dieldrin

R.T.: 5.377 min
 Delta R.T.: -0.002 min
 Response: 113073969
 Conc: 54.76 ng/ml



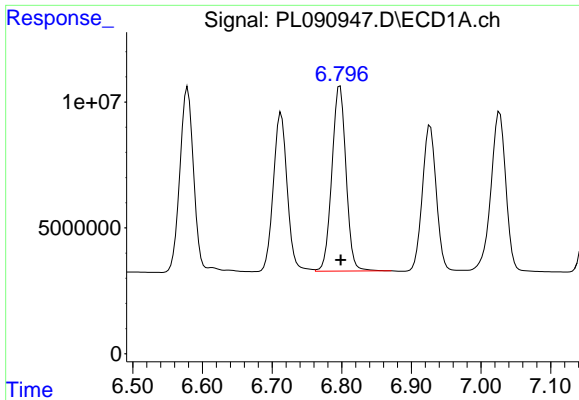
#14 Endrin

R.T.: 6.579 min
 Delta R.T.: -0.001 min
 Response: 96758890
 Conc: 52.83 ng/ml



#14 Endrin

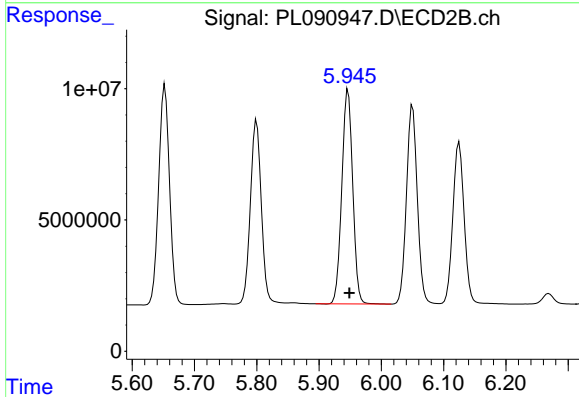
R.T.: 5.652 min
 Delta R.T.: -0.002 min
 Response: 100815311
 Conc: 55.17 ng/ml



#15 Endosulfan II

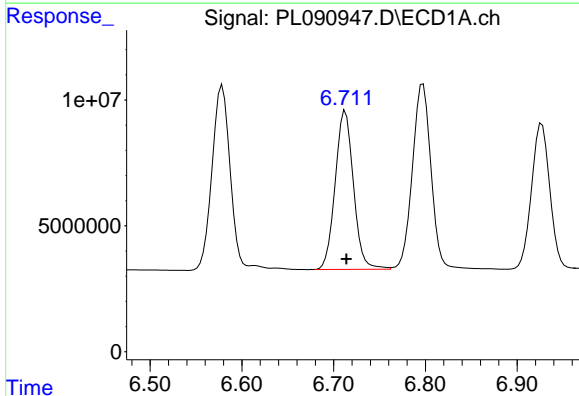
R.T.: 6.797 min
Delta R.T.: -0.001 min
Response: 103684739
Conc: 51.70 ng/ml

Instrument :
ECD_L
ClientSampleId :
PB162610BS



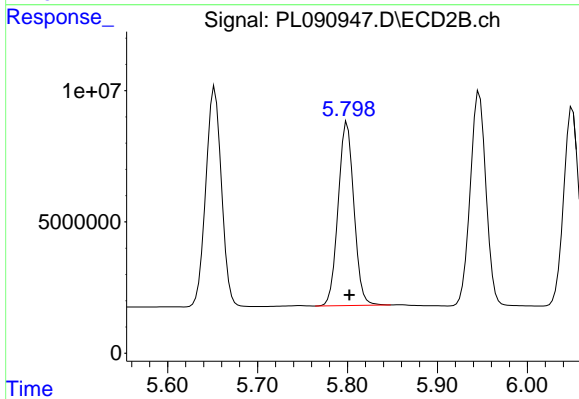
#15 Endosulfan II

R.T.: 5.947 min
Delta R.T.: -0.002 min
Response: 99566419
Conc: 54.82 ng/ml



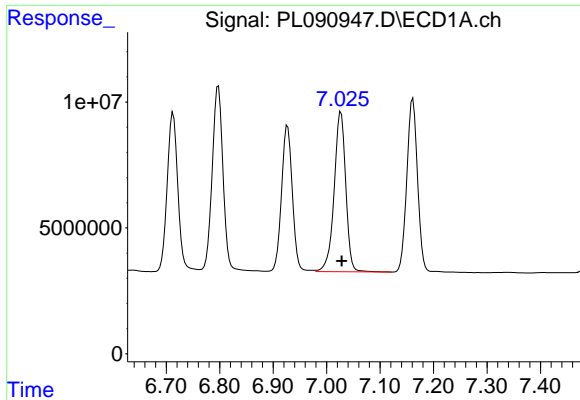
#16 4,4'-DDD

R.T.: 6.713 min
Delta R.T.: -0.001 min
Response: 87413725
Conc: 53.02 ng/ml



#16 4,4'-DDD

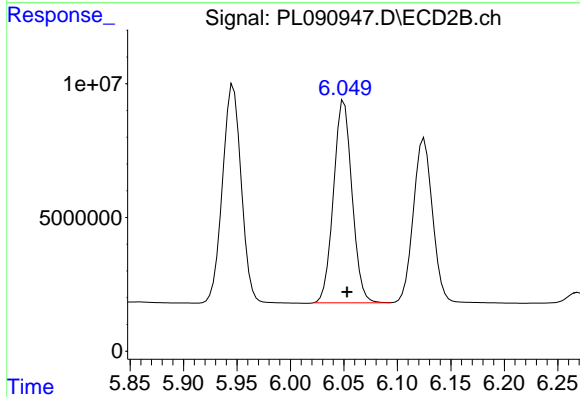
R.T.: 5.800 min
Delta R.T.: -0.002 min
Response: 84945232
Conc: 54.74 ng/ml



#17 4,4'-DDT

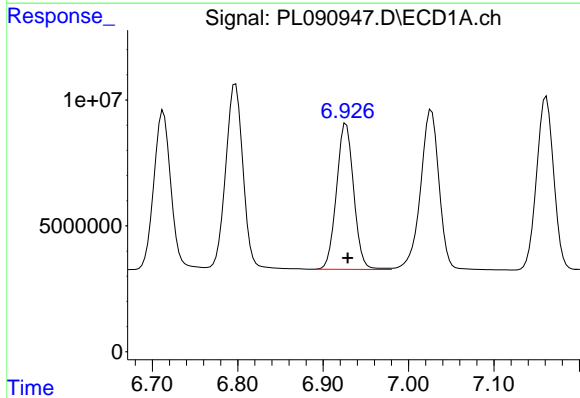
R.T.: 7.027 min
 Delta R.T.: -0.002 min
 Response: 95750700
 Conc: 53.71 ng/ml

Instrument :
 ECD_L
 ClientSampleId :
 PB162610BS



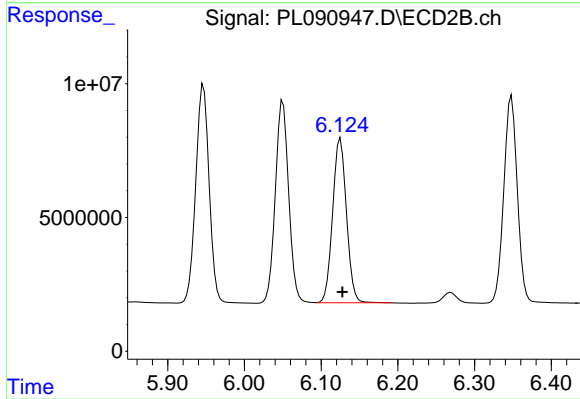
#17 4,4'-DDT

R.T.: 6.050 min
 Delta R.T.: -0.003 min
 Response: 91191766
 Conc: 54.99 ng/ml



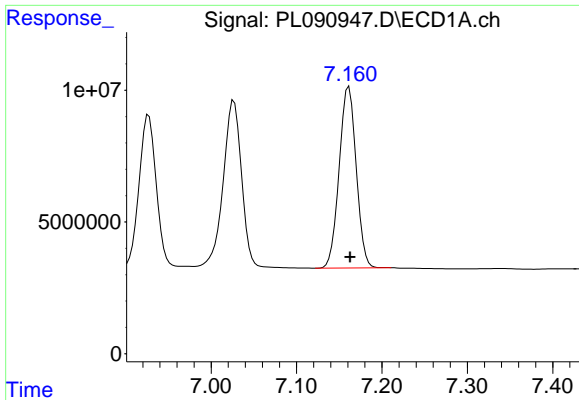
#18 Endrin aldehyde

R.T.: 6.927 min
 Delta R.T.: -0.002 min
 Response: 81038568
 Conc: 53.81 ng/ml



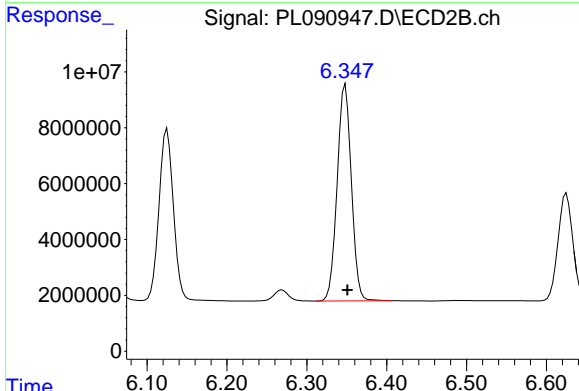
#18 Endrin aldehyde

R.T.: 6.125 min
 Delta R.T.: -0.003 min
 Response: 77018681
 Conc: 54.40 ng/ml

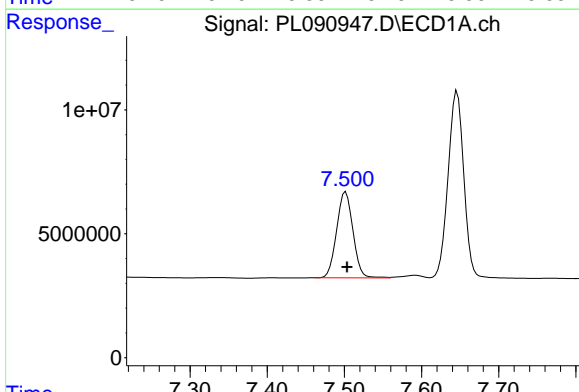


#19 Endosulfan Sulfate
 R.T.: 7.161 min
 Delta R.T.: -0.001 min
 Response: 95421625
 Conc: 53.20 ng/ml

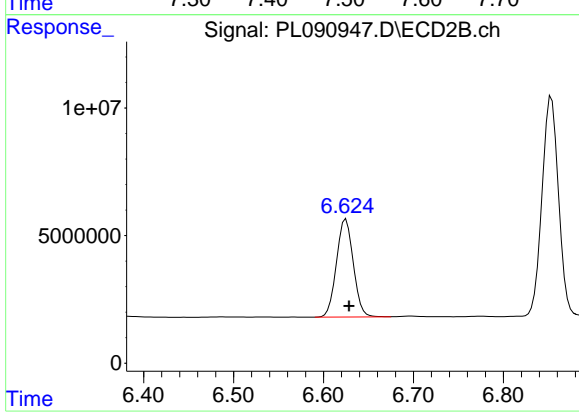
Instrument :
 ECD_L
 ClientSampleId :
 PB162610BS



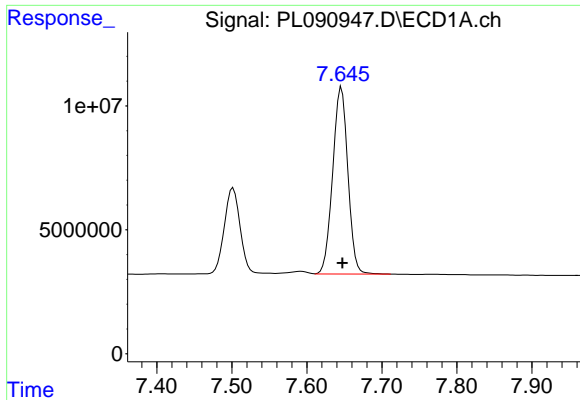
#19 Endosulfan Sulfate
 R.T.: 6.348 min
 Delta R.T.: -0.003 min
 Response: 95693219
 Conc: 54.82 ng/ml



#20 Methoxychlor
 R.T.: 7.502 min
 Delta R.T.: -0.002 min
 Response: 50991488
 Conc: 53.44 ng/ml



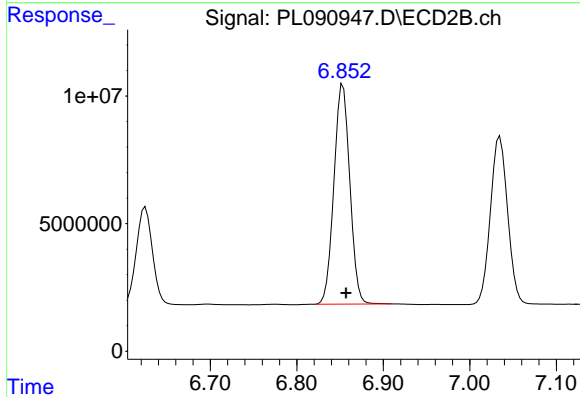
#20 Methoxychlor
 R.T.: 6.625 min
 Delta R.T.: -0.003 min
 Response: 49980735
 Conc: 54.15 ng/ml



#21 Endrin ketone

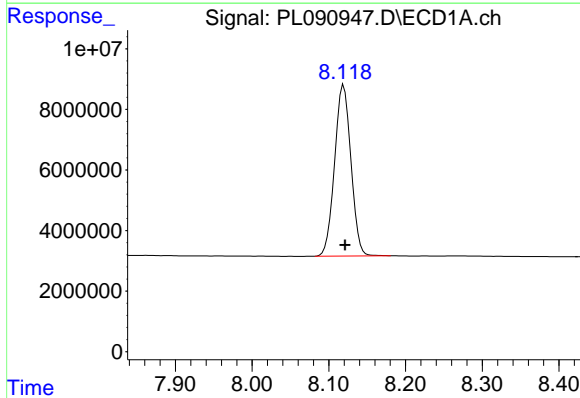
R.T.: 7.646 min
 Delta R.T.: -0.002 min
 Response: 106169606
 Conc: 53.58 ng/ml

Instrument :
 ECD_L
 ClientSampleId :
 PB162610BS



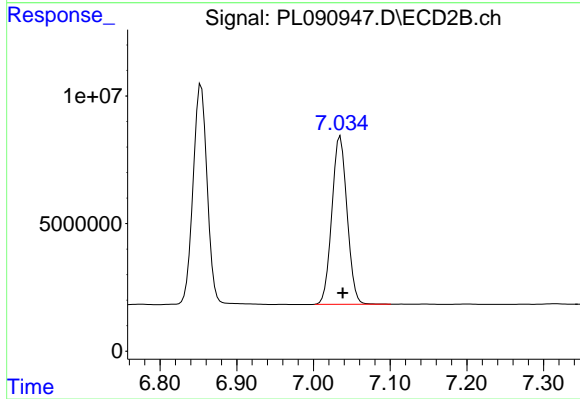
#21 Endrin ketone

R.T.: 6.853 min
 Delta R.T.: -0.004 min
 Response: 109593246
 Conc: 55.30 ng/ml



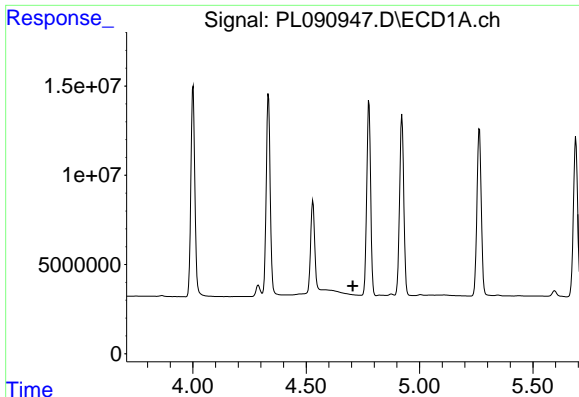
#22 Mirex

R.T.: 8.119 min
 Delta R.T.: -0.002 min
 Response: 83638426
 Conc: 53.80 ng/ml



#22 Mirex

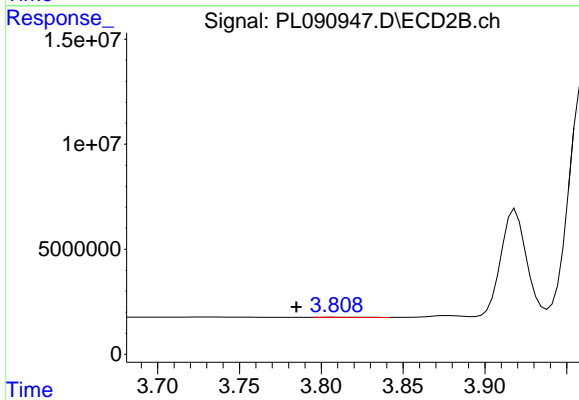
R.T.: 7.035 min
 Delta R.T.: -0.003 min
 Response: 90664727
 Conc: 53.99 ng/ml



#23 Chlordane-1

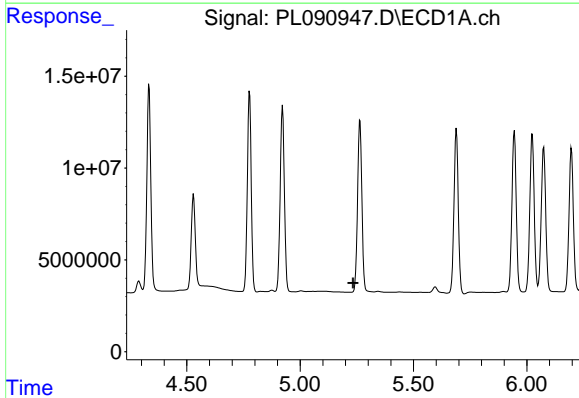
R.T.: 0.000 min
 Exp R.T. : 4.705 min
 Response: 0
 Conc: N.D.

Instrument :
 ECD_L
 ClientSampleId :
 PB162610BS



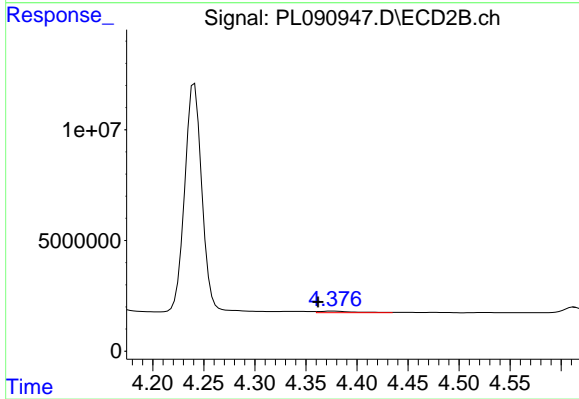
#23 Chlordane-1

R.T.: 3.808 min
 Delta R.T.: 0.023 min
 Response: 87765
 Conc: 1.30 ng/ml



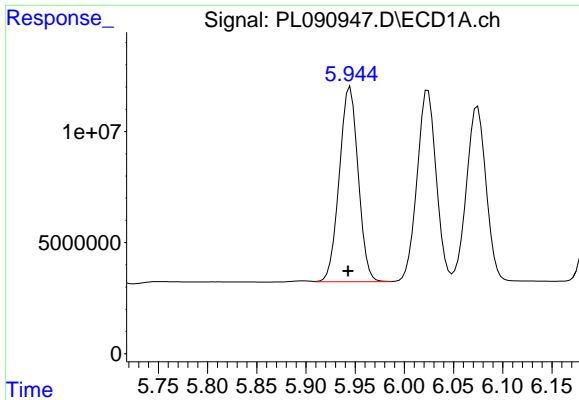
#24 Chlordane-2

R.T.: 0.000 min
 Exp R.T. : 5.233 min
 Response: 0
 Conc: N.D.



#24 Chlordane-2

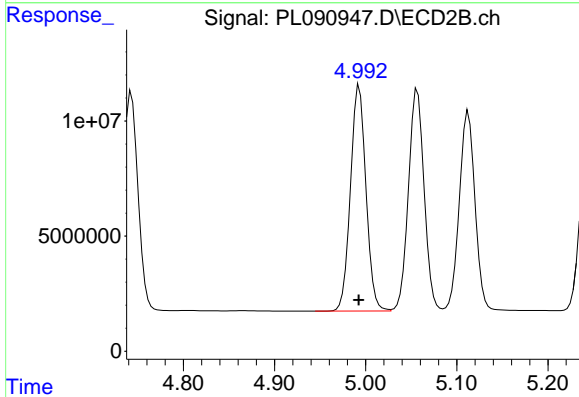
R.T.: 4.377 min
 Delta R.T.: 0.015 min
 Response: 1696188
 Conc: 20.39 ng/ml



#25 Chlordane-3

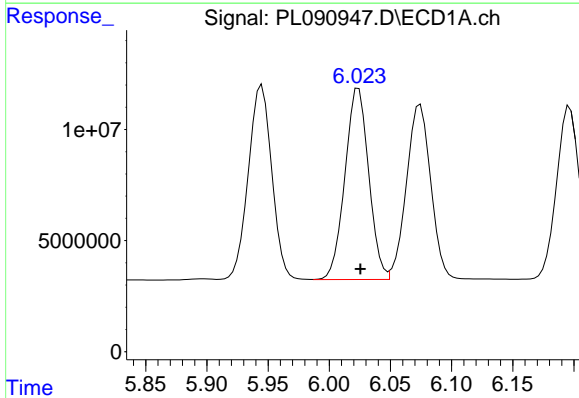
R.T.: 5.945 min
 Delta R.T.: 0.002 min
 Response: 117113850
 Conc: 356.13 ng/ml

Instrument :
 ECD_L
 ClientSampleId :
 PB162610BS



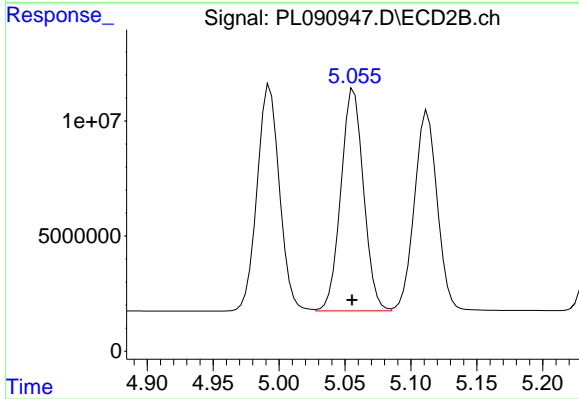
#25 Chlordane-3

R.T.: 4.993 min
 Delta R.T.: 0.000 min
 Response: 115852649
 Conc: 517.36 ng/ml



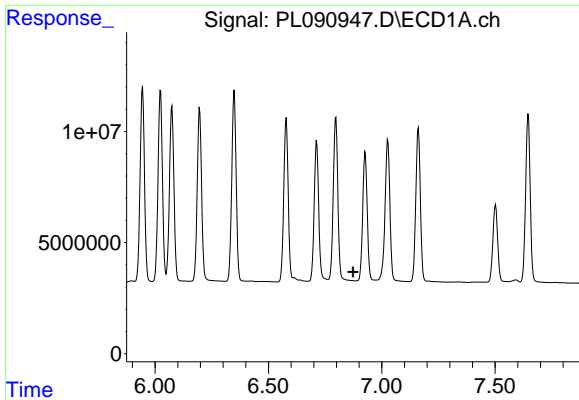
#26 Chlordane-4

R.T.: 6.024 min
 Delta R.T.: -0.001 min
 Response: 116503621
 Conc: 290.72 ng/ml



#26 Chlordane-4

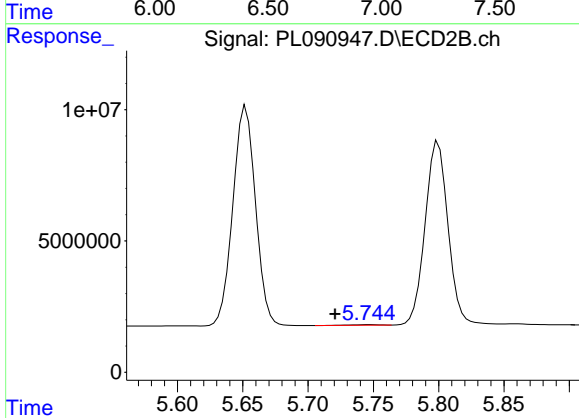
R.T.: 5.057 min
 Delta R.T.: 0.002 min
 Response: 115317495
 Conc: 538.97 ng/ml



#27 Chlordane-5

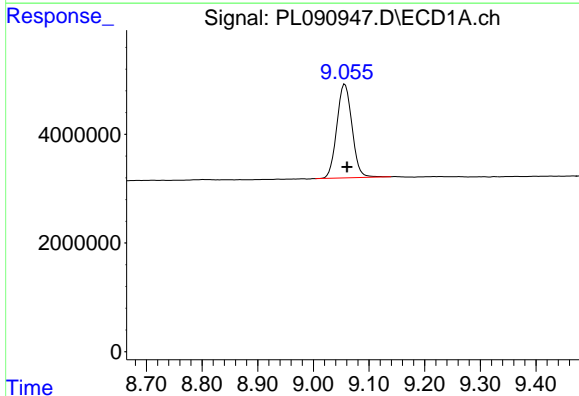
R.T.: 0.000 min
 Exp R.T.: 6.873 min
 Response: 0
 Conc: N.D.

Instrument :
 ECD_L
 ClientSampleId :
 PB162610BS



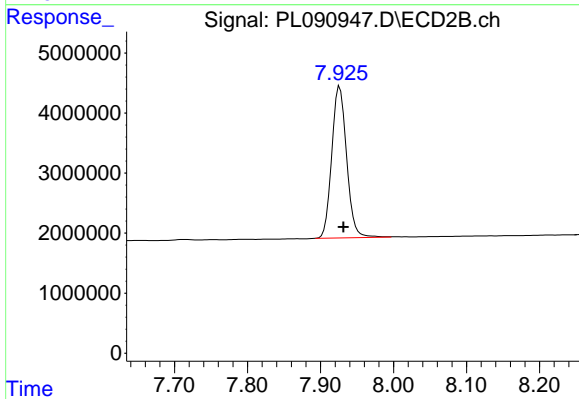
#27 Chlordane-5

R.T.: 5.747 min
 Delta R.T.: 0.027 min
 Response: 298917
 Conc: 4.47 ng/ml



#28 Decachlorobiphenyl

R.T.: 9.057 min
 Delta R.T.: -0.004 min
 Response: 32638899
 Conc: 22.72 ng/ml



#28 Decachlorobiphenyl

R.T.: 7.926 min
 Delta R.T.: -0.005 min
 Response: 35762015
 Conc: 21.42 ng/ml