

Data Path : Z:\pestpcbsrv\HPCHEM1\ECD\_L\Data\PL081124\  
 Data File : PL090974.D  
 Signal(s) : Signal #1: ECD1A.ch Signal #2: ECD2B.ch  
 Acq On : 10 Aug 2024 12:24  
 Operator : AR\AJ  
 Sample : P3526-01  
 Misc :  
 ALS Vial : 28 Sample Multiplier: 1

Instrument :  
 ECD\_L  
 ClientSampleId :

Integration File signal 1: autoint1.e  
 Integration File signal 2: autoint2.e  
 Quant Time: Aug 12 02:01:33 2024  
 Quant Method : Z:\pestpcbsrv\HPCHEM1\ECD\_L\methods\PL080524.M  
 Quant Title : GC Extractables  
 QLast Update : Tue Aug 06 10:55:36 2024  
 Response via : Initial Calibration  
 Integrator: ChemStation

Volume Inj. : 1 µl  
 Signal #1 Phase : ZB-MR2 Signal #2 Phase: ZB-MR1  
 Signal #1 Info : 30M x 0.32mm x0.2 Signal #2 Info : 30M x 0.32mm x0.5µm

	Compound	RT#1	RT#2	Resp#1	Resp#2	ng/ml	ng/ml
-----							
System Monitoring Compounds							
1)	SA Tetrachlo...	3.544	2.786	28481510	21189586	14.710	12.257
28)	SA Decachlor...	9.056	7.927	18099698	18239045	12.598	10.927
Target Compounds							
3)	MA gamma-BHC...	4.337	3.633	8949254	-1104065	3.403	N.D. #
4)	MA Heptachlor	0.000	3.975	0	106.4E6	N.D.	45.903 #
5)	MB Aldrin	5.290f	4.257f	34880949	28900092	14.511	13.035
6)	B beta-BHC	0.000	3.901f	0	149.2E6	N.D.	140.262 #
7)	B delta-BHC	0.000	4.156	0	32241676	N.D.	14.427 #
8)	B Heptachlo...	5.680	4.737	26322118	1016546	11.583	0.499 #
9)	A Endosulfan I	6.088	5.117	3849283	181044	1.836	0.094 #
10)	B gamma-Chl...	5.939	4.971f	26350705	13300704	11.662	6.228 #
11)	B alpha-Chl...	6.025	5.067	8843449	16025699	3.949	7.511 #
12)	B 4,4'-DDE	6.193	5.245	11098976	1445943	5.599	0.771 #
13)	MA Dieldrin	6.346	5.378	3895680	15138622	1.776	7.332 #
14)	MA Endrin	6.576	5.658	10195351	-2793860	5.567	N.D. #
16)	A 4,4'-DDD	6.722	5.799	17012263	440534	10.319	0.284 #
17)	MA 4,4'-DDT	6.999f	6.046	26190220	20674517	14.691	12.468
18)	B Endrin al...	0.000	6.144f	0	1673500	N.D.	1.182 #
19)	B Endosulfa...	7.140f	6.344	2006411	3215719	1.119	1.842 #
21)	B Endrin ke...	7.619f	6.883f	7109765	1677131	3.588	0.846 #
22)	Mirex	0.000	7.033	0	199096	N.D.	0.119 #
23)	Chlordane-1	4.694	3.775	15529211	-3322682	165.969	N.D. #
24)	Chlordane-2	0.000	4.364	0	2326456	N.D.	27.971 #
25)	Chlordane-3	5.939	4.971f	26350705	13300704	80.129	59.397 #
26)	Chlordane-4	6.025	5.067	8843449	16025699	22.068	74.901 #
27)	Chlordane-5	6.844f	5.721	8918568	11298055	106.987	169.055 #

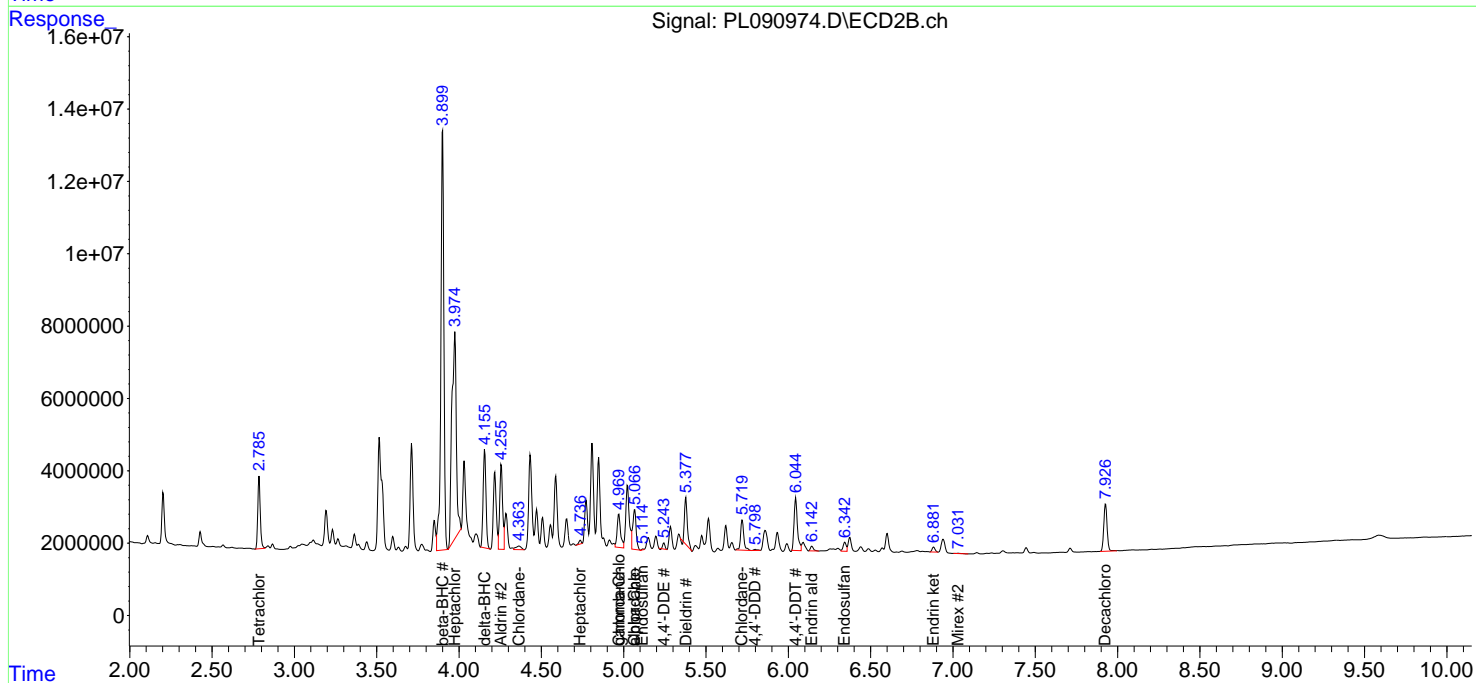
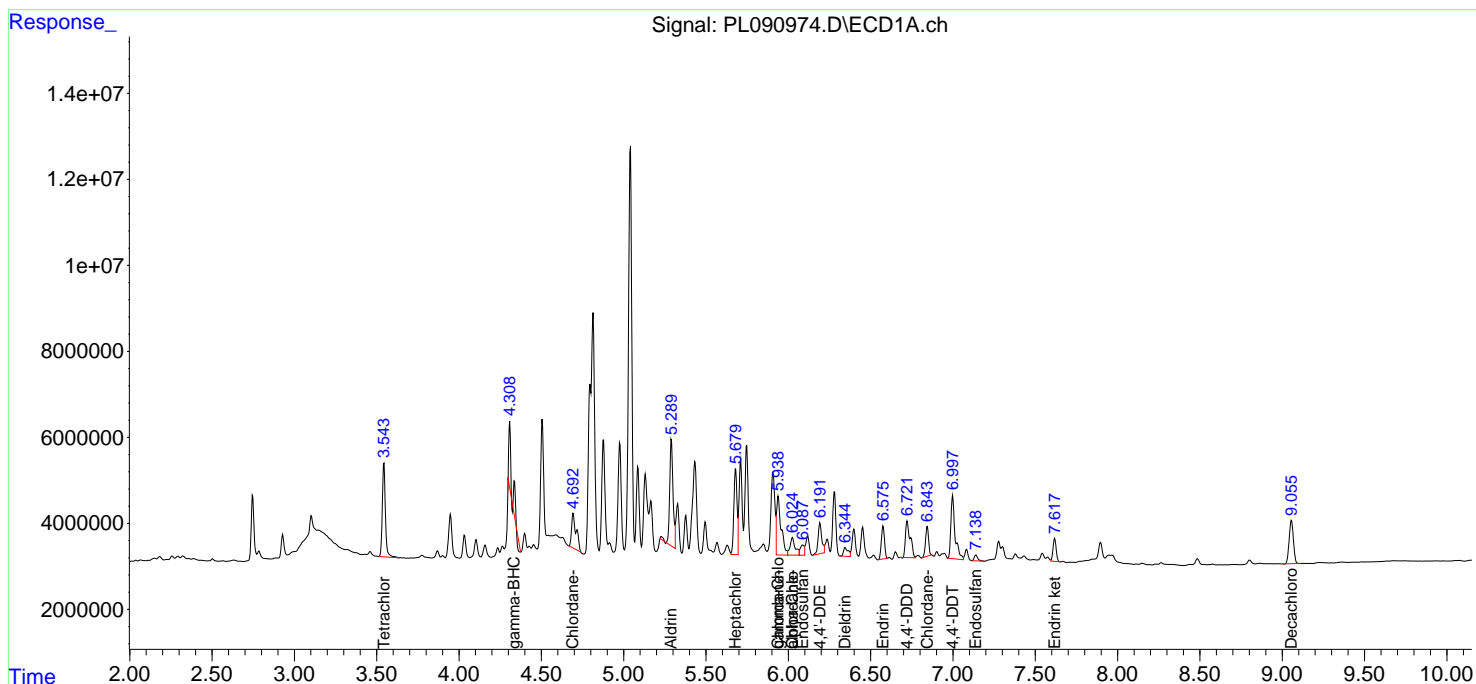
(f)=RT Delta > 1/2 Window (#)=Amounts differ by > 25% (m)=manual int.

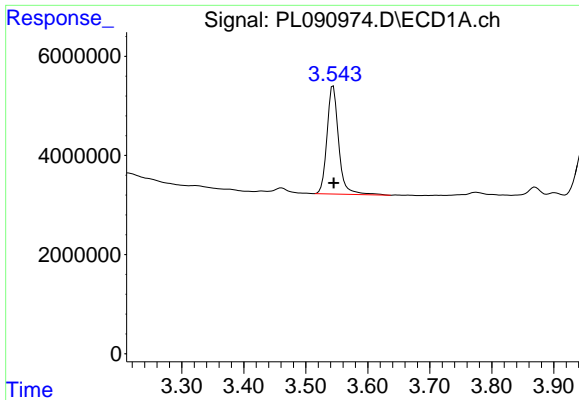
Data Path : Z:\pestpcbsrv\HPCHEM1\ECD\_L\Data\PL081124\  
 Data File : PL090974.D  
 Signal(s) : Signal #1: ECD1A.ch Signal #2: ECD2B.ch  
 Acq On : 10 Aug 2024 12:24  
 Operator : AR\AJ  
 Sample : P3526-01  
 Misc :  
 ALS Vial : 28 Sample Multiplier: 1

Instrument :  
 ECD\_L  
 ClientSampleId :

Integration File signal 1: autoint1.e  
 Integration File signal 2: autoint2.e  
 Quant Time: Aug 12 02:01:33 2024  
 Quant Method : Z:\pestpcbsrv\HPCHEM1\ECD\_L\methods\PL080524.M  
 Quant Title : GC Extractables  
 QLast Update : Tue Aug 06 10:55:36 2024  
 Response via : Initial Calibration  
 Integrator: ChemStation

Volume Inj. : 1 µl  
 Signal #1 Phase : ZB-MR2 Signal #2 Phase: ZB-MR1  
 Signal #1 Info : 30M x 0.32mm x0.2 Signal #2 Info : 30M x 0.32mm x0.5µm

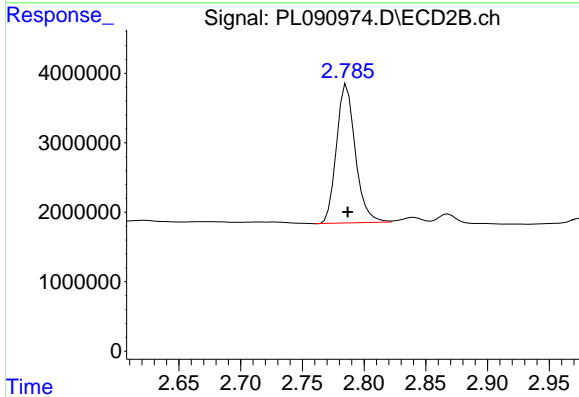




#1 Tetrachloro-m-xylene

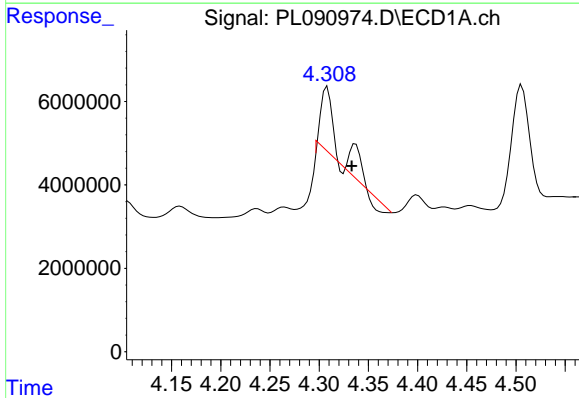
R.T.: 3.544 min  
 Delta R.T.: 0.000 min  
 Response: 28481510  
 Conc: 14.71 ng/ml

Instrument :  
 ECD\_L  
 ClientSampleId :



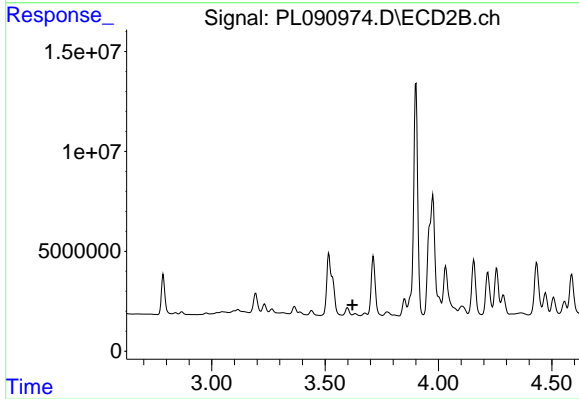
#1 Tetrachloro-m-xylene

R.T.: 2.786 min  
 Delta R.T.: 0.000 min  
 Response: 21189586  
 Conc: 12.26 ng/ml



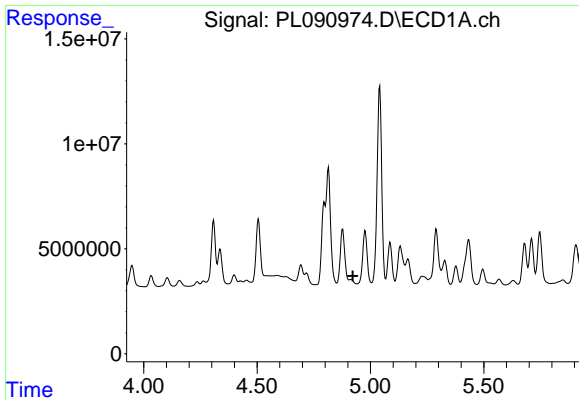
#3 gamma-BHC (Lindane)

R.T.: 4.337 min  
 Delta R.T.: 0.004 min  
 Response: 8949254  
 Conc: 3.40 ng/ml



#3 gamma-BHC (Lindane)

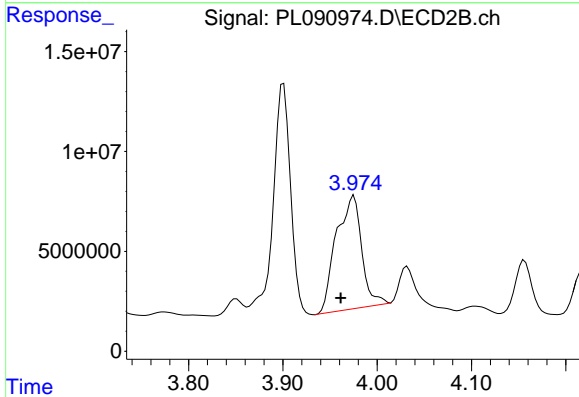
R.T.: 3.633 min  
 Delta R.T.: 0.012 min  
 Response: -1104065  
 Conc: N.D.



#4 Heptachlor

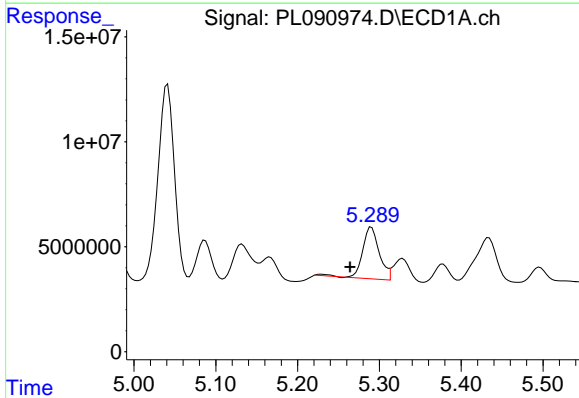
R.T.: 0.000 min  
 Exp R.T.: 4.922 min  
 Response: 0  
 Conc: N.D.

Instrument :  
 ECD\_L  
 ClientSampleId :



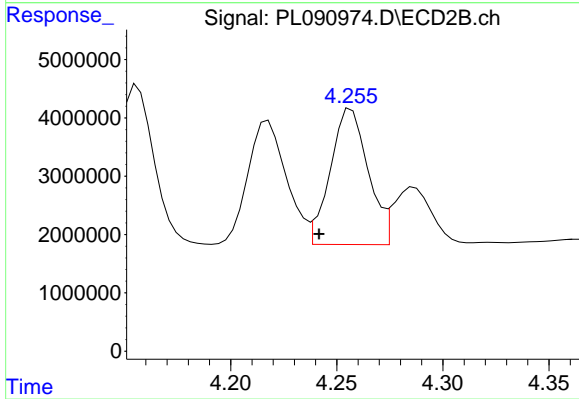
#4 Heptachlor

R.T.: 3.975 min  
 Delta R.T.: 0.014 min  
 Response: 106428999  
 Conc: 45.90 ng/ml



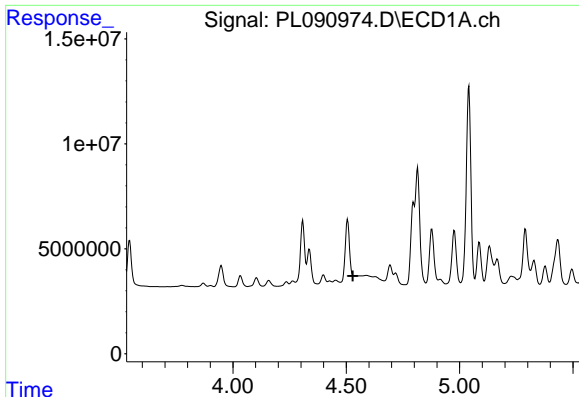
#5 Aldrin

R.T.: 5.290 min  
 Delta R.T.: 0.026 min  
 Response: 34880949  
 Conc: 14.51 ng/ml



#5 Aldrin

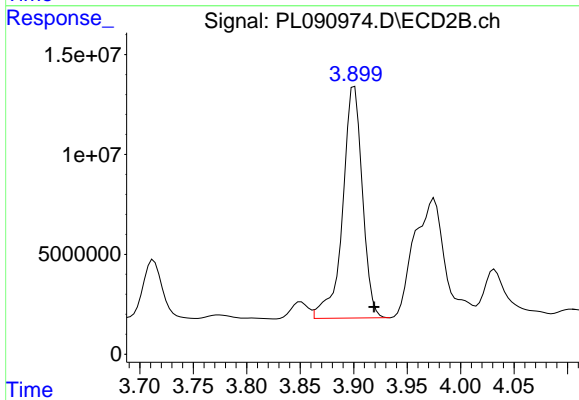
R.T.: 4.257 min  
 Delta R.T.: 0.015 min  
 Response: 28900092  
 Conc: 13.04 ng/ml



#6 beta-BHC

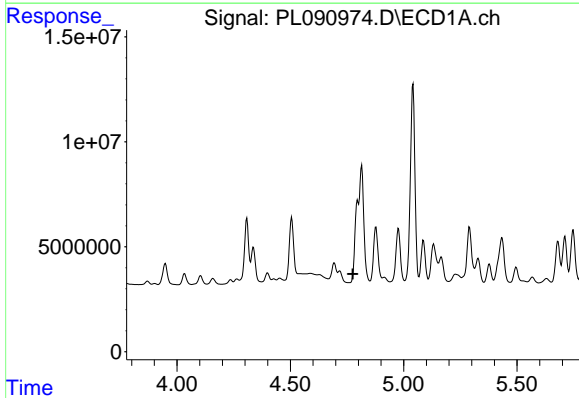
R.T.: 0.000 min  
 Exp R.T.: 4.529 min  
 Response: 0  
 Conc: N.D.

Instrument :  
 ECD\_L  
 ClientSampleId :



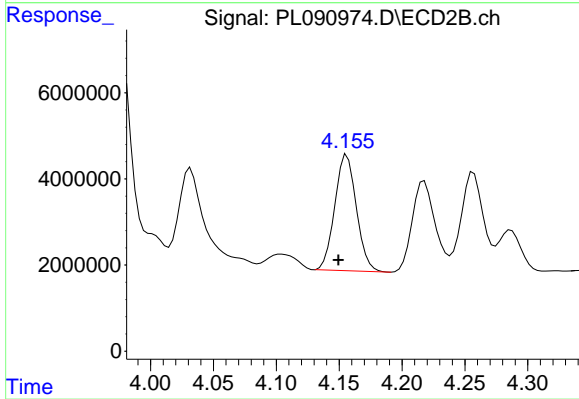
#6 beta-BHC

R.T.: 3.901 min  
 Delta R.T.: -0.018 min  
 Response: 149187754  
 Conc: 140.26 ng/ml



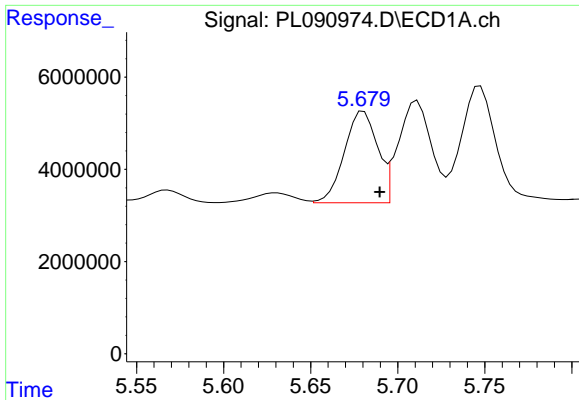
#7 delta-BHC

R.T.: 0.000 min  
 Exp R.T.: 4.776 min  
 Response: 0  
 Conc: N.D.



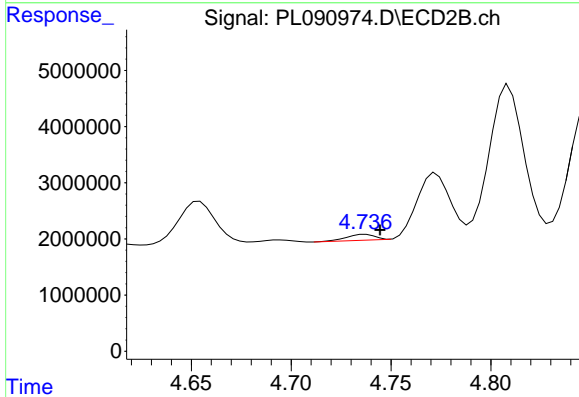
#7 delta-BHC

R.T.: 4.156 min  
 Delta R.T.: 0.007 min  
 Response: 32241676  
 Conc: 14.43 ng/ml

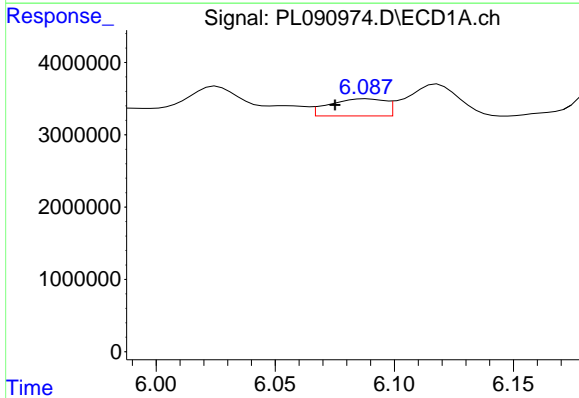


#8 Heptachlor epoxide  
 R.T.: 5.680 min  
 Delta R.T.: -0.009 min  
 Response: 26322118  
 Conc: 11.58 ng/ml

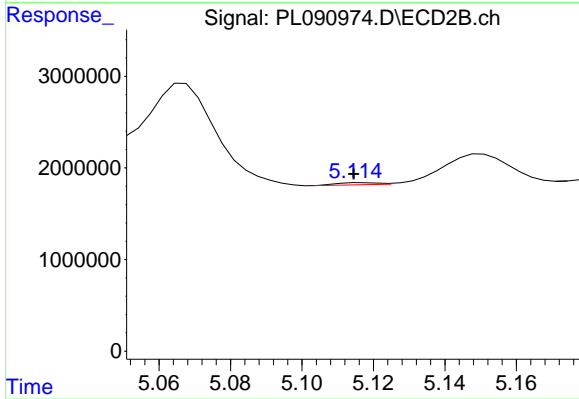
Instrument :  
 ECD\_L  
 ClientSampleId :



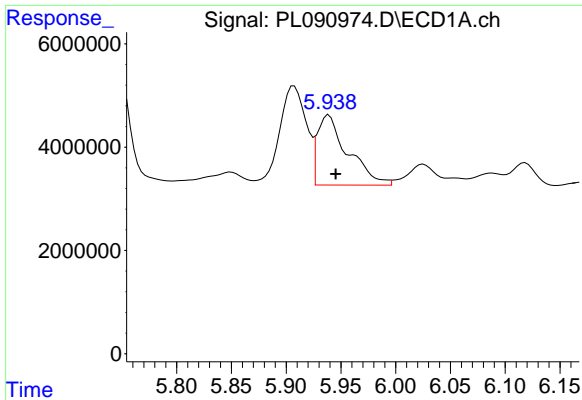
#8 Heptachlor epoxide  
 R.T.: 4.737 min  
 Delta R.T.: -0.007 min  
 Response: 1016546  
 Conc: 0.50 ng/ml



#9 Endosulfan I  
 R.T.: 6.088 min  
 Delta R.T.: 0.013 min  
 Response: 3849283  
 Conc: 1.84 ng/ml



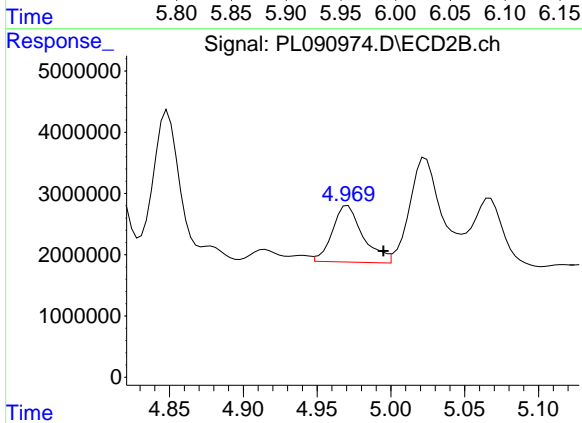
#9 Endosulfan I  
 R.T.: 5.117 min  
 Delta R.T.: 0.003 min  
 Response: 181044  
 Conc: 0.09 ng/ml



#10 gamma-Chlordane

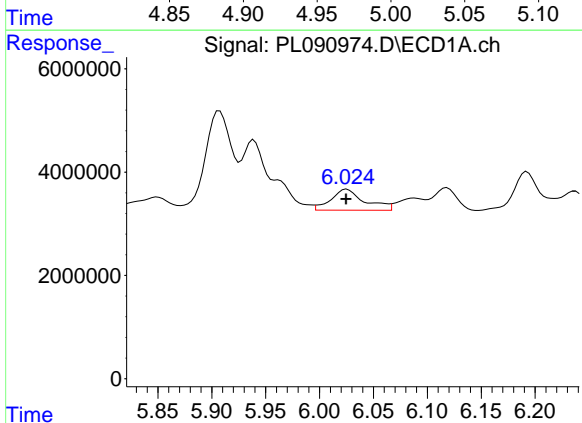
R.T.: 5.939 min  
 Delta R.T.: -0.006 min  
 Response: 26350705  
 Conc: 11.66 ng/ml

Instrument :  
 ECD\_L  
 ClientSampleId :



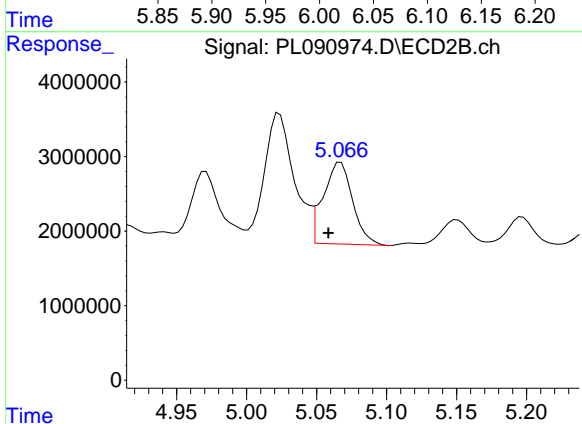
#10 gamma-Chlordane

R.T.: 4.971 min  
 Delta R.T.: -0.024 min  
 Response: 13300704  
 Conc: 6.23 ng/ml



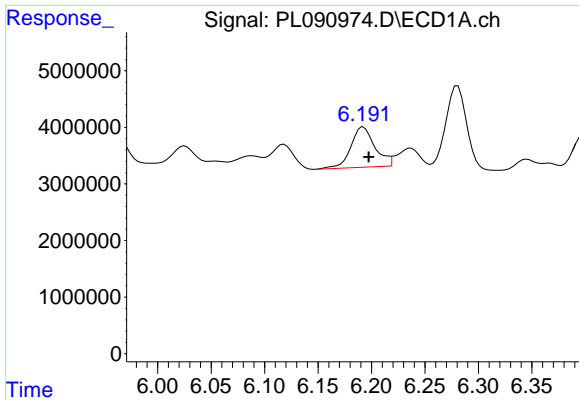
#11 alpha-Chlordane

R.T.: 6.025 min  
 Delta R.T.: 0.000 min  
 Response: 8843449  
 Conc: 3.95 ng/ml



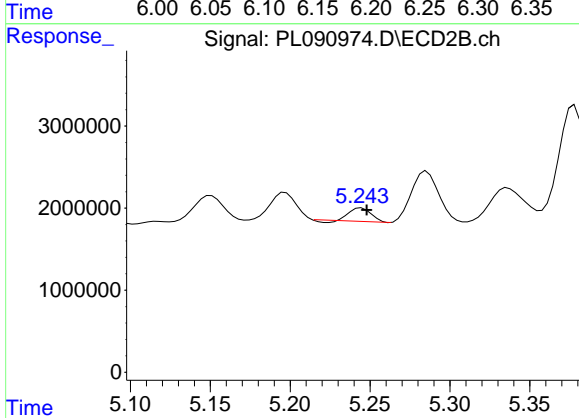
#11 alpha-Chlordane

R.T.: 5.067 min  
 Delta R.T.: 0.009 min  
 Response: 16025699  
 Conc: 7.51 ng/ml

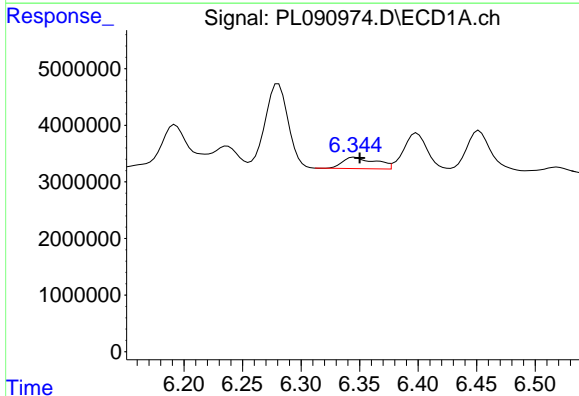


#12 4,4'-DDE  
 R.T.: 6.193 min  
 Delta R.T.: -0.005 min  
 Response: 11098976  
 Conc: 5.60 ng/ml

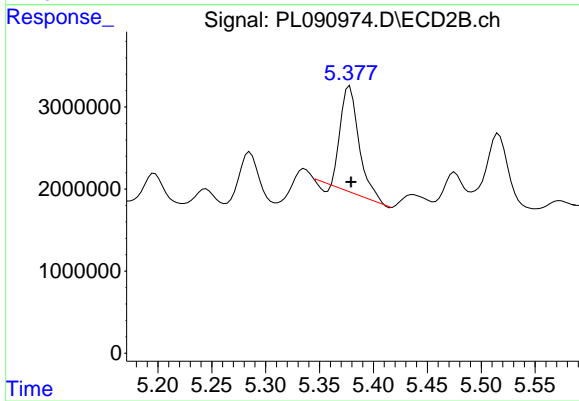
Instrument :  
 ECD\_L  
 ClientSampleId :



#12 4,4'-DDE  
 R.T.: 5.245 min  
 Delta R.T.: -0.003 min  
 Response: 1445943  
 Conc: 0.77 ng/ml

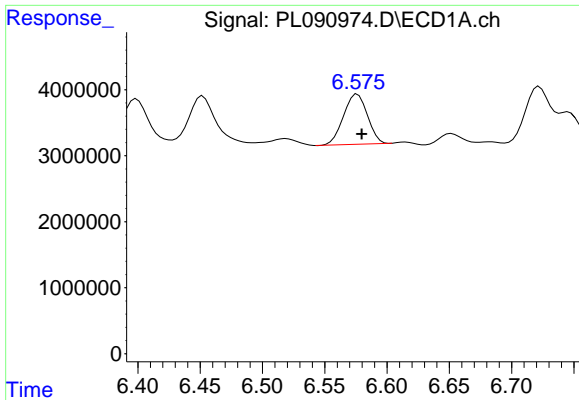


#13 Dieldrin  
 R.T.: 6.346 min  
 Delta R.T.: -0.004 min  
 Response: 3895680  
 Conc: 1.78 ng/ml



#13 Dieldrin  
 R.T.: 5.378 min  
 Delta R.T.: -0.001 min  
 Response: 15138622  
 Conc: 7.33 ng/ml

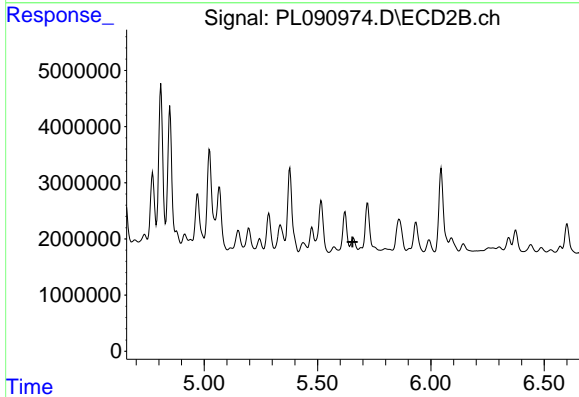




#14 Endrin

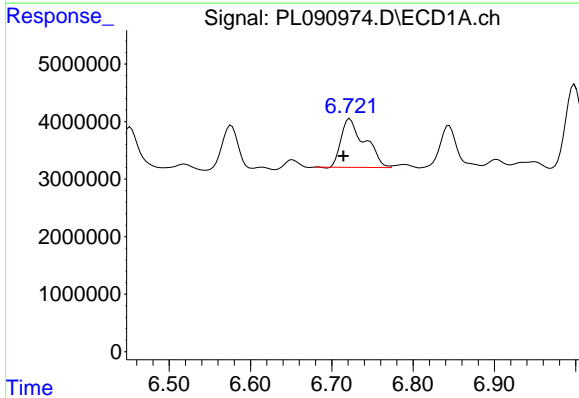
R.T.: 6.576 min  
 Delta R.T.: -0.004 min  
 Response: 10195351  
 Conc: 5.57 ng/ml

Instrument :  
 ECD\_L  
 ClientSampleId :



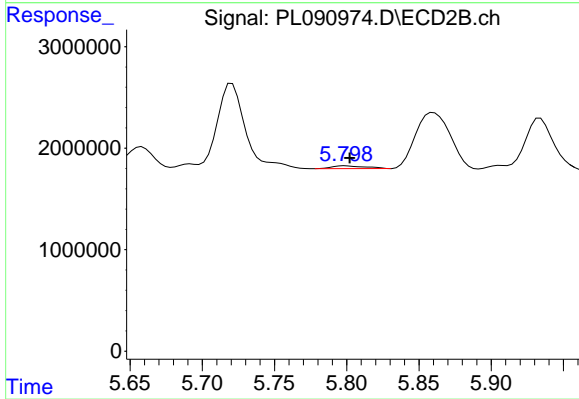
#14 Endrin

R.T.: 5.658 min  
 Delta R.T.: 0.004 min  
 Response: -2793860  
 Conc: N.D.



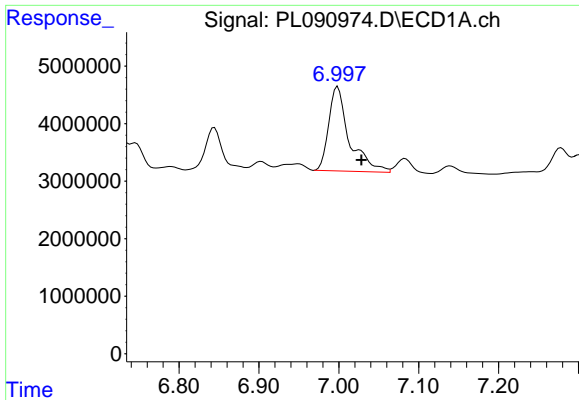
#16 4,4'-DDD

R.T.: 6.722 min  
 Delta R.T.: 0.008 min  
 Response: 17012263  
 Conc: 10.32 ng/ml



#16 4,4'-DDD

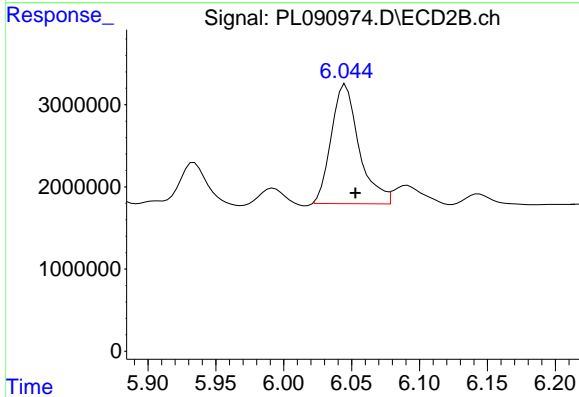
R.T.: 5.799 min  
 Delta R.T.: -0.003 min  
 Response: 440534  
 Conc: 0.28 ng/ml



#17 4,4'-DDT

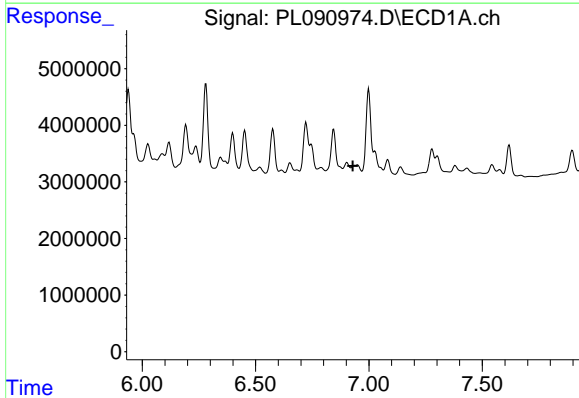
R.T.: 6.999 min  
 Delta R.T.: -0.030 min  
 Response: 26190220  
 Conc: 14.69 ng/ml

Instrument :  
 ECD\_L  
 ClientSampleId :



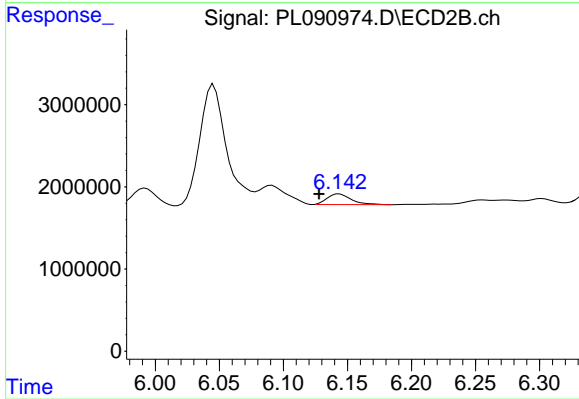
#17 4,4'-DDT

R.T.: 6.046 min  
 Delta R.T.: -0.007 min  
 Response: 20674517  
 Conc: 12.47 ng/ml



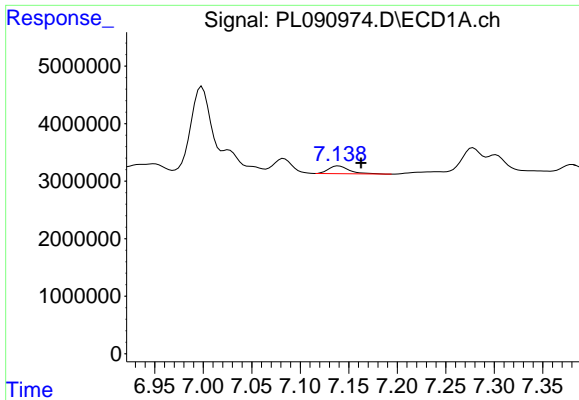
#18 Endrin aldehyde

R.T.: 0.000 min  
 Exp R.T. : 6.929 min  
 Response: 0  
 Conc: N.D.



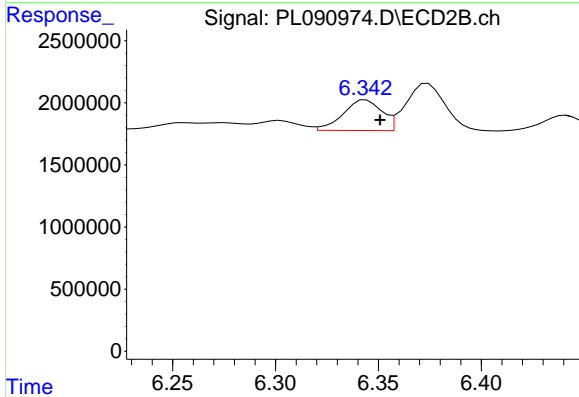
#18 Endrin aldehyde

R.T.: 6.144 min  
 Delta R.T.: 0.016 min  
 Response: 1673500  
 Conc: 1.18 ng/ml

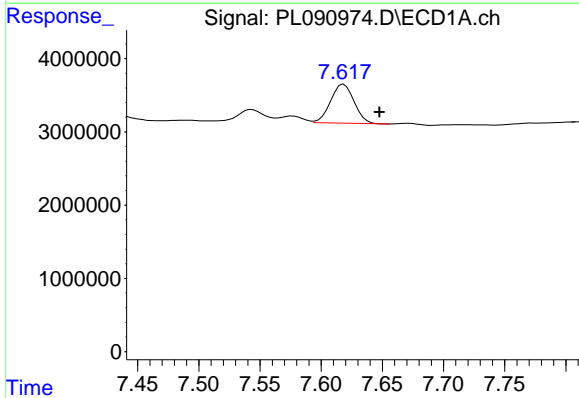


#19 Endosulfan Sulfate  
 R.T.: 7.140 min  
 Delta R.T.: -0.023 min  
 Response: 2006411  
 Conc: 1.12 ng/ml

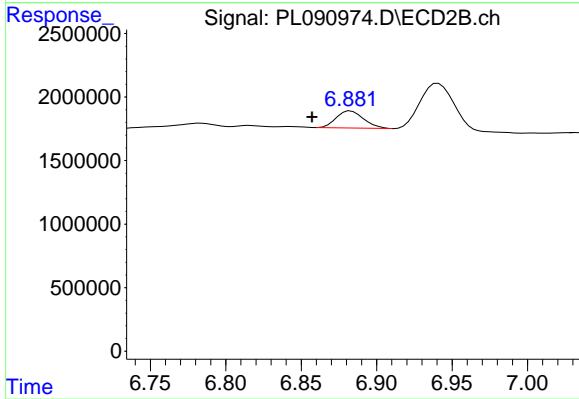
Instrument :  
 ECD\_L  
 ClientSampleId :



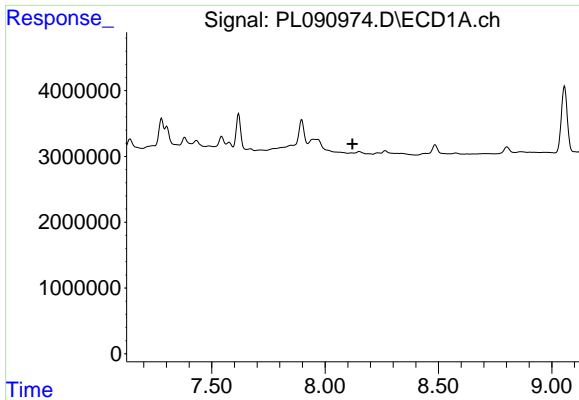
#19 Endosulfan Sulfate  
 R.T.: 6.344 min  
 Delta R.T.: -0.007 min  
 Response: 3215719  
 Conc: 1.84 ng/ml



#21 Endrin ketone  
 R.T.: 7.619 min  
 Delta R.T.: -0.029 min  
 Response: 7109765  
 Conc: 3.59 ng/ml



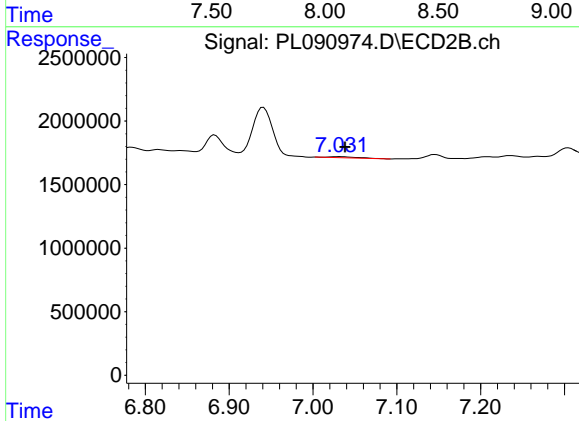
#21 Endrin ketone  
 R.T.: 6.883 min  
 Delta R.T.: 0.026 min  
 Response: 1677131  
 Conc: 0.85 ng/ml



#22 Mirex

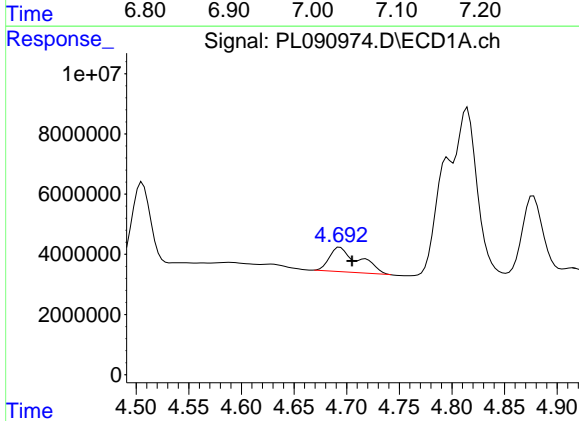
R.T.: 0.000 min  
 Exp R.T.: 8.121 min  
 Response: 0  
 Conc: N.D.

Instrument :  
 ECD\_L  
 ClientSampleId :



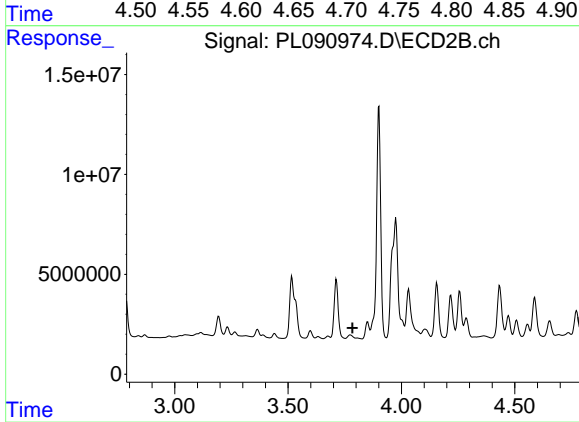
#22 Mirex

R.T.: 7.033 min  
 Delta R.T.: -0.006 min  
 Response: 199096  
 Conc: 0.12 ng/ml



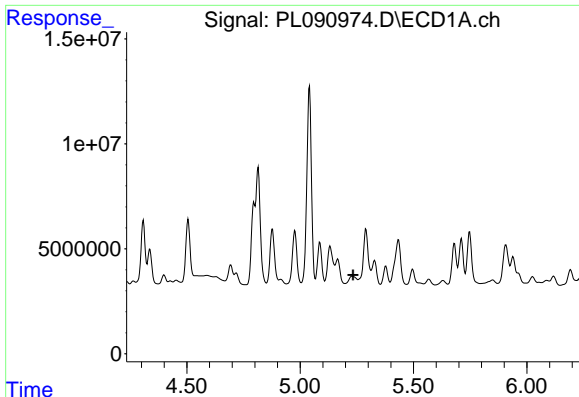
#23 Chlordane-1

R.T.: 4.694 min  
 Delta R.T.: -0.011 min  
 Response: 15529211  
 Conc: 165.97 ng/ml



#23 Chlordane-1

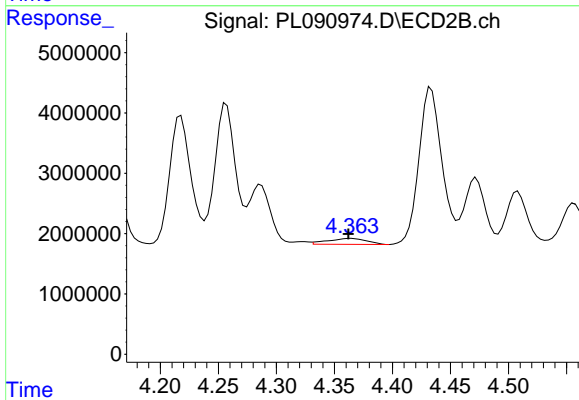
R.T.: 3.775 min  
 Delta R.T.: -0.010 min  
 Response: -3322682  
 Conc: N.D.



#24 Chlordane-2

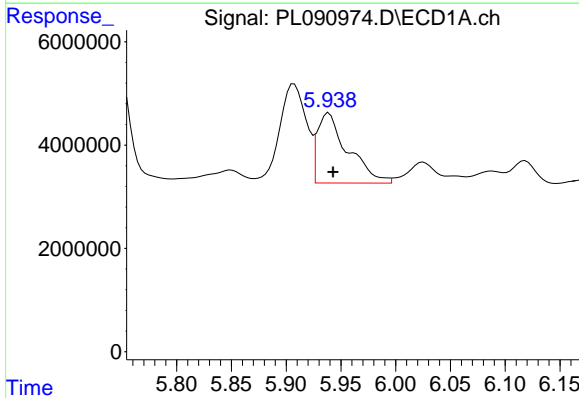
R.T.: 0.000 min  
 Exp R.T.: 5.233 min  
 Response: 0  
 Conc: N.D.

Instrument :  
 ECD\_L  
 ClientSampleId :



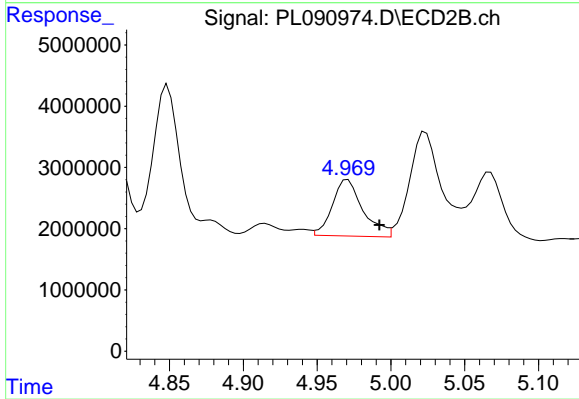
#24 Chlordane-2

R.T.: 4.364 min  
 Delta R.T.: 0.002 min  
 Response: 2326456  
 Conc: 27.97 ng/ml



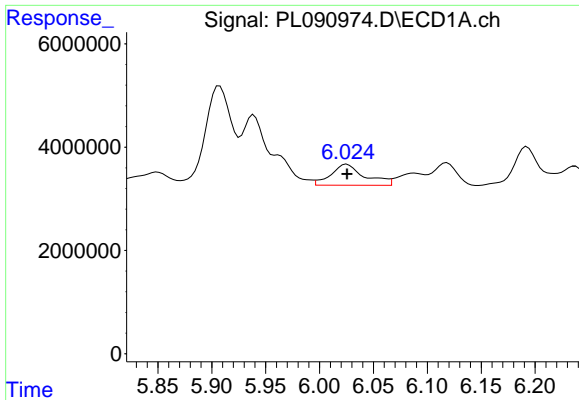
#25 Chlordane-3

R.T.: 5.939 min  
 Delta R.T.: -0.004 min  
 Response: 26350705  
 Conc: 80.13 ng/ml



#25 Chlordane-3

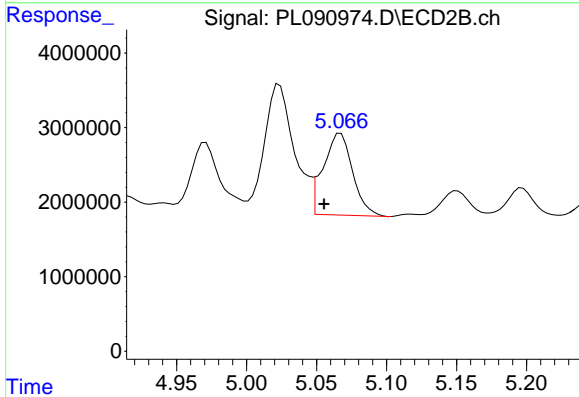
R.T.: 4.971 min  
 Delta R.T.: -0.021 min  
 Response: 13300704  
 Conc: 59.40 ng/ml



#26 Chlordane-4

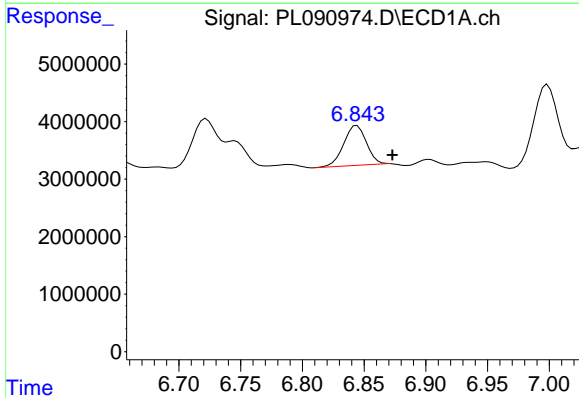
R.T.: 6.025 min  
 Delta R.T.: 0.000 min  
 Response: 8843449  
 Conc: 22.07 ng/ml

Instrument :  
 ECD\_L  
 ClientSampleId :



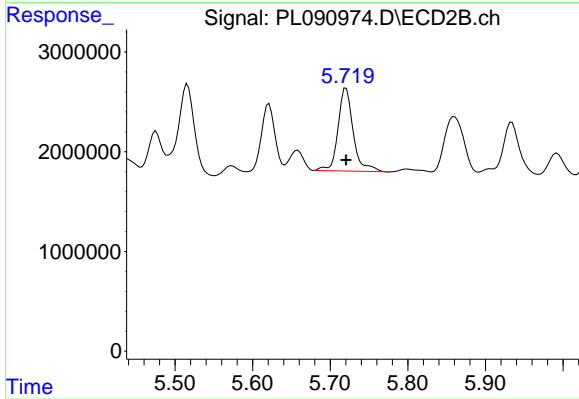
#26 Chlordane-4

R.T.: 5.067 min  
 Delta R.T.: 0.012 min  
 Response: 16025699  
 Conc: 74.90 ng/ml



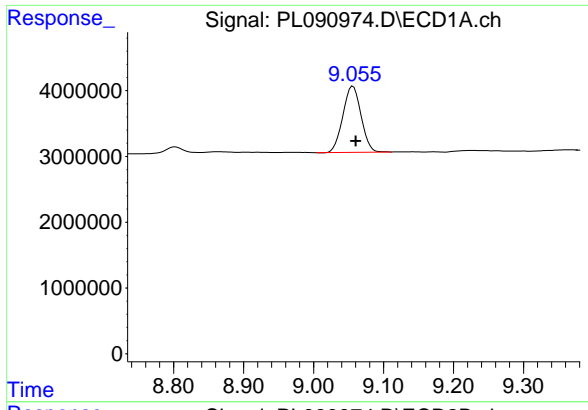
#27 Chlordane-5

R.T.: 6.844 min  
 Delta R.T.: -0.029 min  
 Response: 8918568  
 Conc: 106.99 ng/ml



#27 Chlordane-5

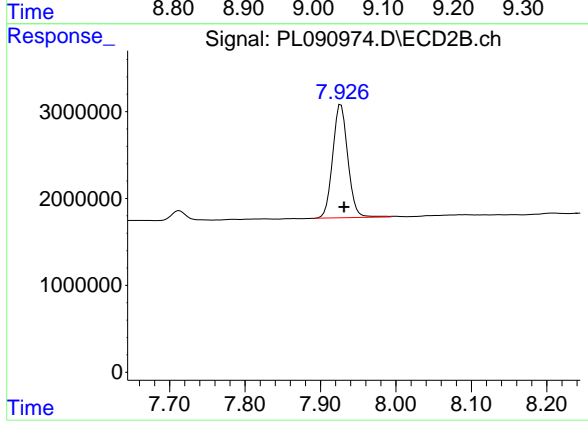
R.T.: 5.721 min  
 Delta R.T.: 0.000 min  
 Response: 11298055  
 Conc: 169.06 ng/ml



#28 Decachlorobiphenyl

R.T.: 9.056 min  
Delta R.T.: -0.004 min  
Response: 18099698  
Conc: 12.60 ng/ml

Instrument :  
ECD\_L  
ClientSampleId :



#28 Decachlorobiphenyl

R.T.: 7.927 min  
Delta R.T.: -0.004 min  
Response: 18239045  
Conc: 10.93 ng/ml