

Data Path : Z:\pestpcbsrv\HPCHEM1\ECD_L\Data\PL082418\
 Data File : PL039504.D
 Signal(s) : Signal #1: ECD1A.ch Signal #2: ECD2B.ch
 Acq On : 24 Aug 2018 17:23
 Operator : AJ\SJ
 Sample : J4636-03
 Misc :
 ALS Vial : 16 Sample Multiplier: 1

Instrument :
 ECD_L
 ClientSampleId :

Integration File signal 1: autoint1.e
 Integration File signal 2: autoint2.e
 Quant Time: Aug 24 23:01:04 2018
 Quant Method : Z:\pestpcbsrv\HPCHEM1\ECD_L\methods\PL081318.M
 Quant Title : GC Extractables
 QLast Update : Wed Aug 15 15:04:22 2018
 Response via : Initial Calibration
 Integrator: ChemStation

Volume Inj. : 2 µl
 Signal #1 Phase : ZB-MR1 Signal #2 Phase: ZB-MR2
 Signal #1 Info : 30M x 0.32mm x0.5 Signal #2 Info : 30M x 0.32mm x0.25µm

Compound	RT#1	RT#2	Resp#1	Resp#2	ng/ml	ng/ml

System Monitoring Compounds						
1) SA Tetrachlo...	3.303	3.906	185.1E6	79047753	26.475	29.486
28) SA Decachlor...	7.957	8.892	148.5E6	60473152	21.145	26.059
Target Compounds						
5) MB Aldrin	4.502f	0.000	10583891	0	1.057	N.D. #
7) B delta-BHC	4.502f	4.956	10583891	12804298	0.975	3.216 #
8) B Heptachlo...	5.029f	5.773	8523278	6155288	0.893	1.830 #
12) B 4,4'-DDE	5.407	6.209	26563392	6686602	2.774	2.163
15) B Endosulfa...	6.103f	0.000	6573893	0	0.756	N.D. #
17) MA 4,4'-DDT	6.149	0.000	9788425	0	1.291	N.D. #
23) Chlordane-1	4.156	0.000	15357678	0	48.510	N.D. #
27) Chlordane-5	6.103	0.000	6573893	0	20.269	N.D. #

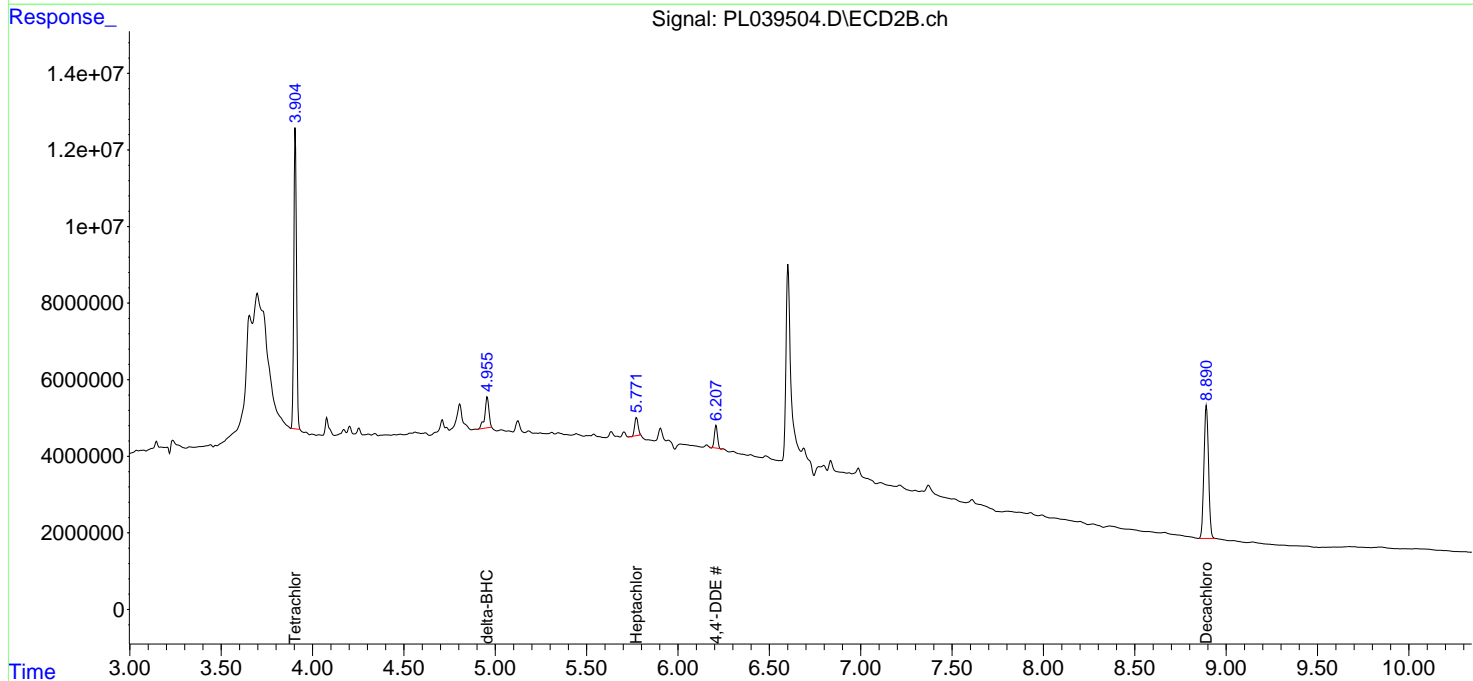
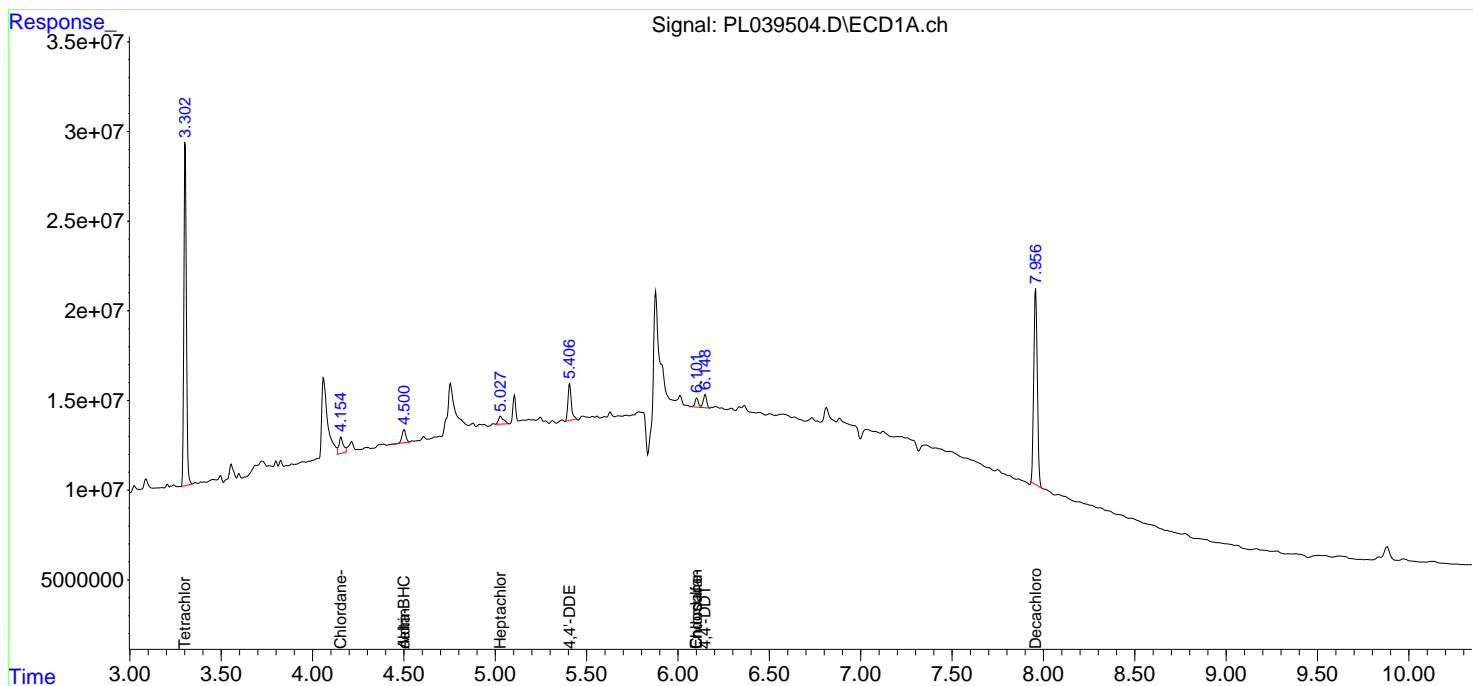
(f)=RT Delta > 1/2 Window (#)=Amounts differ by > 25% (m)=manual int.

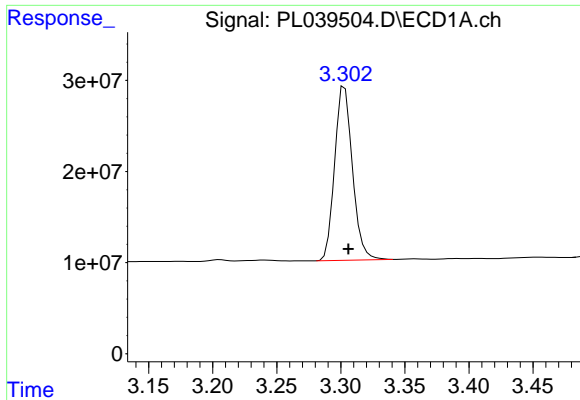
Data Path : Z:\pestpcbsrv\HPCHEM1\ECD_L\Data\PL082418\
 Data File : PL039504.D
 Signal(s) : Signal #1: ECD1A.ch Signal #2: ECD2B.ch
 Acq On : 24 Aug 2018 17:23
 Operator : AJ\SJ
 Sample : J4636-03
 Misc :
 ALS Vial : 16 Sample Multiplier: 1

Instrument :
 ECD_L
 ClientSampled :

Integration File signal 1: autoint1.e
 Integration File signal 2: autoint2.e
 Quant Time: Aug 24 23:01:04 2018
 Quant Method : Z:\pestpcbsrv\HPCHEM1\ECD_L\methods\PL081318.M
 Quant Title : GC Extractables
 QLast Update : Wed Aug 15 15:04:22 2018
 Response via : Initial Calibration
 Integrator: ChemStation

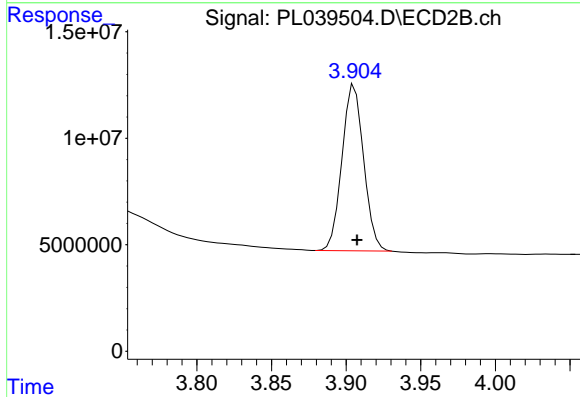
Volume Inj. : 2 µl
 Signal #1 Phase : ZB-MR1 Signal #2 Phase: ZB-MR2
 Signal #1 Info : 30M x 0.32mm x0.5 Signal #2 Info : 30M x 0.32mm x0.25µm



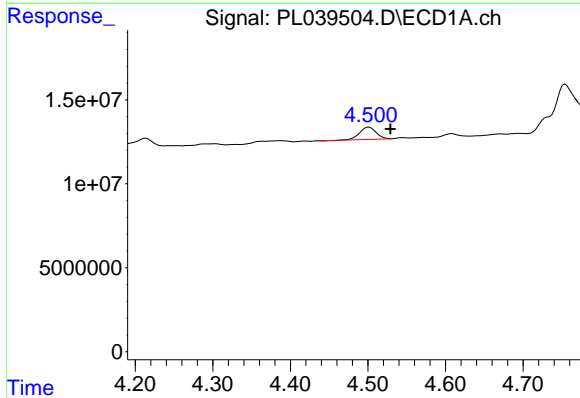


#1 Tetrachloro-m-xylene
 R.T.: 3.303 min
 Delta R.T.: -0.003 min
 Response: 185069043
 Conc: 26.47 ng/ml

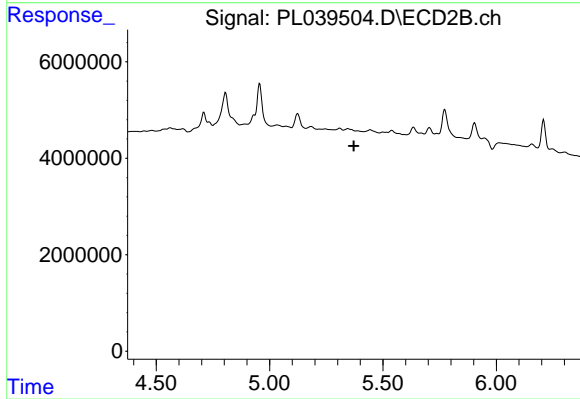
Instrument :
 ECD_L
 ClientSampled :



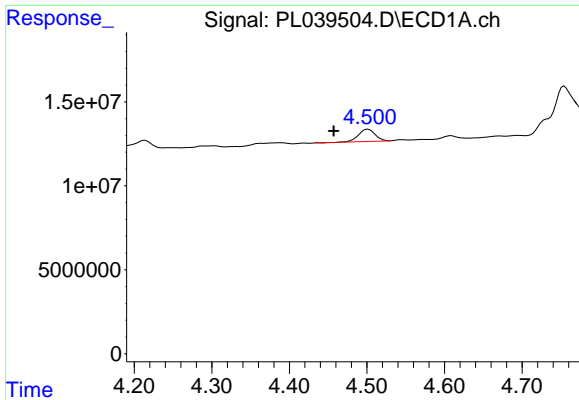
#1 Tetrachloro-m-xylene
 R.T.: 3.906 min
 Delta R.T.: -0.002 min
 Response: 79047753
 Conc: 29.49 ng/ml



#5 Aldrin
 R.T.: 4.502 min
 Delta R.T.: -0.028 min
 Response: 10583891
 Conc: 1.06 ng/ml

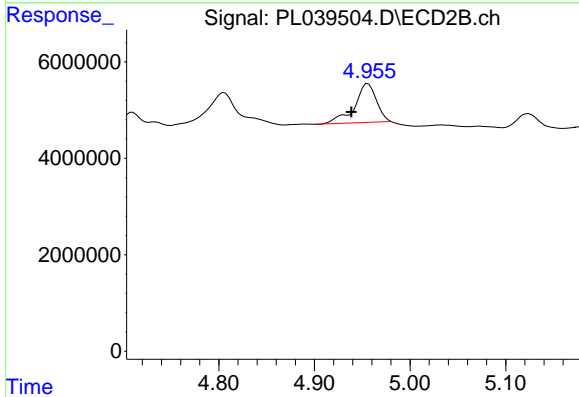


#5 Aldrin
 R.T.: 0.000 min
 Exp R.T. : 5.372 min
 Response: 0
 Conc: N.D.

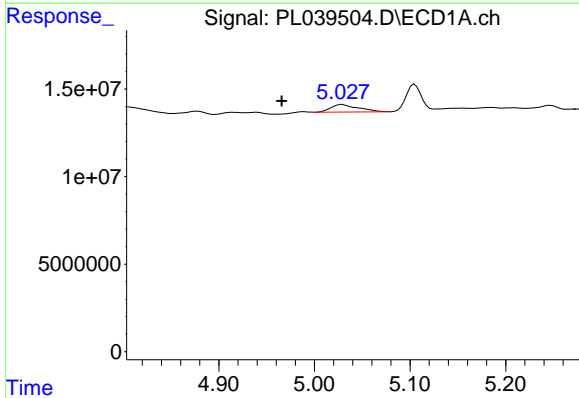


#7 delta-BHC
 R.T.: 4.502 min
 Delta R.T.: 0.044 min
 Response: 10583891
 Conc: 0.98 ng/ml

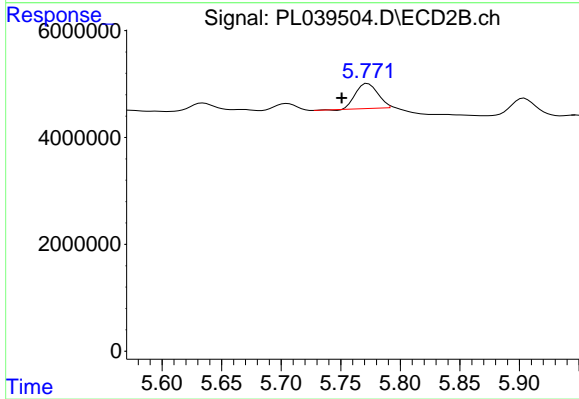
Instrument :
 ECD_L
 ClientSampled :



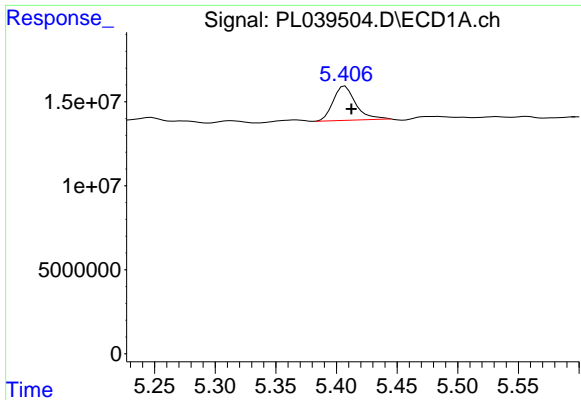
#7 delta-BHC
 R.T.: 4.956 min
 Delta R.T.: 0.018 min
 Response: 12804298
 Conc: 3.22 ng/ml



#8 Heptachlor epoxide
 R.T.: 5.029 min
 Delta R.T.: 0.063 min
 Response: 8523278
 Conc: 0.89 ng/ml



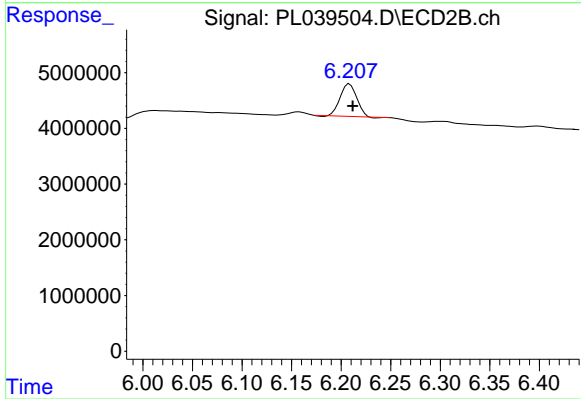
#8 Heptachlor epoxide
 R.T.: 5.773 min
 Delta R.T.: 0.022 min
 Response: 6155288
 Conc: 1.83 ng/ml



#12 4,4'-DDE

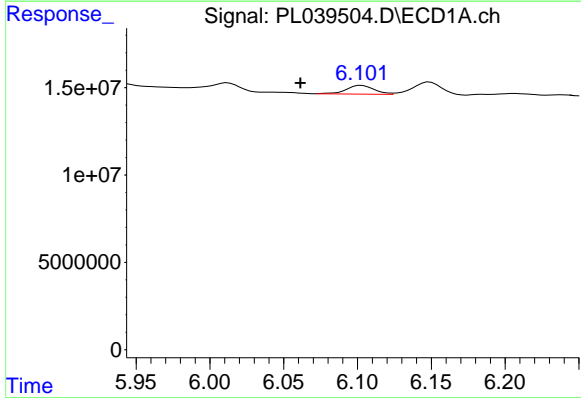
R.T.: 5.407 min
 Delta R.T.: -0.005 min
 Response: 26563392
 Conc: 2.77 ng/ml

Instrument :
 ECD_L
 ClientSampled :



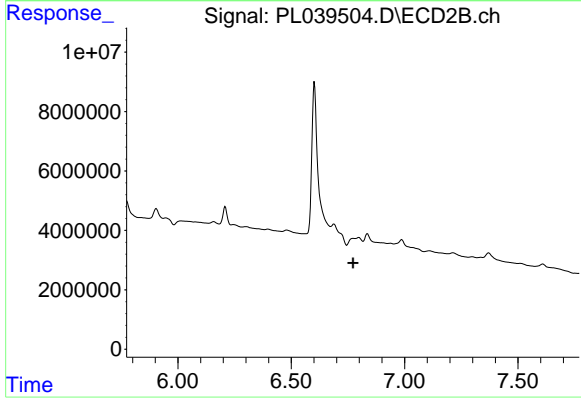
#12 4,4'-DDE

R.T.: 6.209 min
 Delta R.T.: -0.003 min
 Response: 6686602
 Conc: 2.16 ng/ml



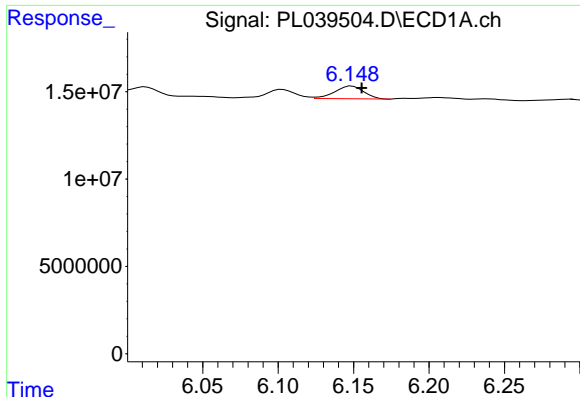
#15 Endosulfan II

R.T.: 6.103 min
 Delta R.T.: 0.042 min
 Response: 6573893
 Conc: 0.76 ng/ml



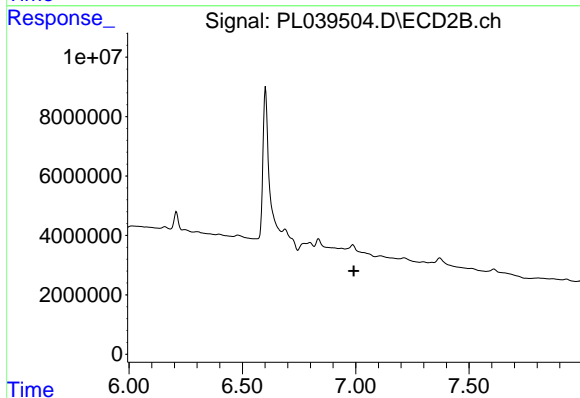
#15 Endosulfan II

R.T.: 0.000 min
 Exp R.T. : 6.773 min
 Response: 0
 Conc: N.D.

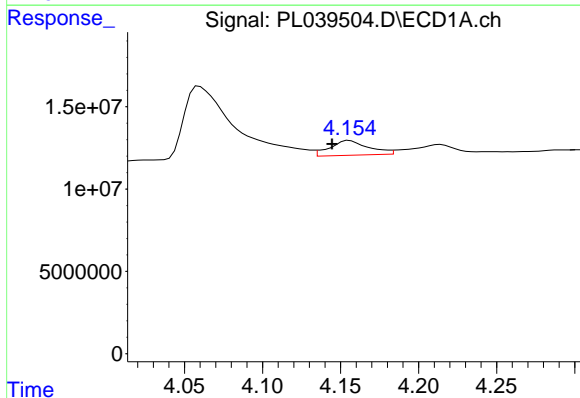


#17 4,4'-DDT
 R.T.: 6.149 min
 Delta R.T.: -0.007 min
 Response: 9788425
 Conc: 1.29 ng/ml

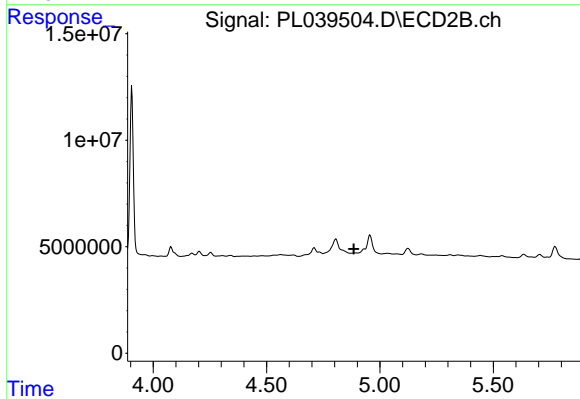
Instrument :
 ECD_L
 ClientSampled :



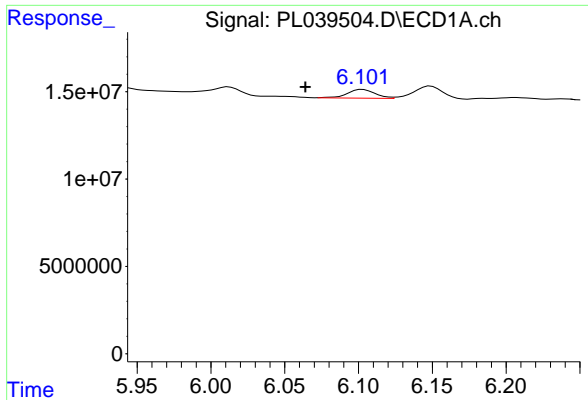
#17 4,4'-DDT
 R.T.: 0.000 min
 Exp R.T. : 6.991 min
 Response: 0
 Conc: N.D.



#23 Chlordane-1
 R.T.: 4.156 min
 Delta R.T.: 0.011 min
 Response: 15357678
 Conc: 48.51 ng/ml

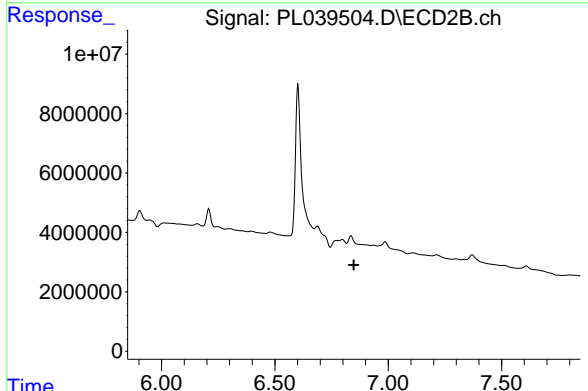


#23 Chlordane-1
 R.T.: 0.000 min
 Exp R.T. : 4.885 min
 Response: 0
 Conc: N.D.

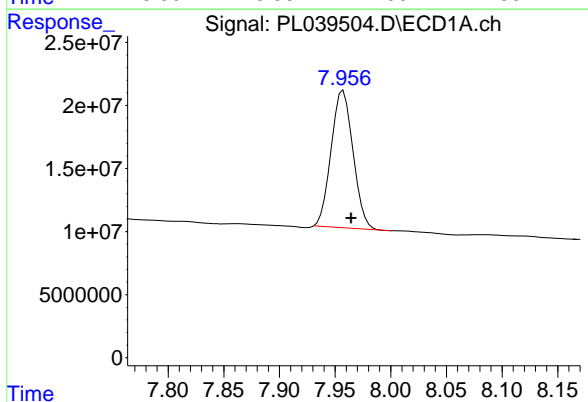


#27 Chlordane-5
 R.T.: 6.103 min
 Delta R.T.: 0.039 min
 Response: 6573893
 Conc: 20.27 ng/ml

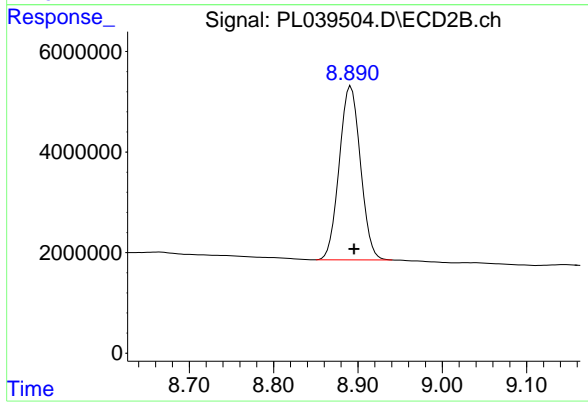
Instrument :
 ECD_L
 ClientSampled :



#27 Chlordane-5
 R.T.: 0.000 min
 Exp R.T. : 6.848 min
 Response: 0
 Conc: N.D.



#28 Decachlorobiphenyl
 R.T.: 7.957 min
 Delta R.T.: -0.007 min
 Response: 148513134
 Conc: 21.15 ng/ml



#28 Decachlorobiphenyl
 R.T.: 8.892 min
 Delta R.T.: -0.004 min
 Response: 60473152
 Conc: 26.06 ng/ml