

Data Path : Z:\pestpcbsrv\HPCHEM1\ECD_L\Data\PL082418\
 Data File : PL039510.D
 Signal(s) : Signal #1: ECD1A.ch Signal #2: ECD2B.ch
 Acq On : 24 Aug 2018 18:48
 Operator : AJ\SJ
 Sample : J4609-01
 Misc :
 ALS Vial : 22 Sample Multiplier: 1

Instrument :
 ECD_L
 ClientSampled :

Integration File signal 1: autoint1.e
 Integration File signal 2: autoint2.e
 Quant Time: Aug 24 23:03:34 2018
 Quant Method : Z:\pestpcbsrv\HPCHEM1\ECD_L\methods\PL081318.M
 Quant Title : GC Extractables
 QLast Update : Wed Aug 15 15:04:22 2018
 Response via : Initial Calibration
 Integrator: ChemStation

Volume Inj. : 2 µl
 Signal #1 Phase : ZB-MR1 Signal #2 Phase: ZB-MR2
 Signal #1 Info : 30M x 0.32mm x0.5 Signal #2 Info : 30M x 0.32mm x0.25µm

Compound	RT#1	RT#2	Resp#1	Resp#2	ng/ml	ng/ml

System Monitoring Compounds						
1) SA Tetrachlo...	3.304	3.906	132.3E6	21110796	18.928	7.875 #
28) SA Decachlor...	7.957	8.895	57997457	37989396	8.258	16.370 #
Target Compounds						
2) A alpha-BHC	3.761f	4.276	-3686724	1086.4E6	N.D.	257.988
3) MA gamma-BHC...	4.045f	4.612f	50196002	21694493	4.733	5.388
5) MB Aldrin	4.488f	5.369	564.9E6	37074852	56.401	10.473 #
6) B beta-BHC	0.000	4.676f	0	47791219	N.D.	27.285 #
7) B delta-BHC	4.488f	4.928	564.9E6	40861512	52.044	10.263 #
8) B Heptachlo...	4.967	5.769	21956720	94261898	2.299	28.029 #
9) A Endosulfan I	5.342f	0.000	5987304	0	0.684	N.D. #
10) B gamma-Chl...	5.211	5.985	290.0E6	131.6E6	29.364	40.653 #
11) B alpha-Chl...	5.249	0.000	293.1E6	0	30.510	N.D. #
12) B 4,4'-DDE	5.404	6.242	41290107	11028630	4.312	3.567
14) MA Endrin	5.800	0.000	11367582	0	1.270	N.D. #
15) B Endosulfa...	6.049	6.750	9037176	8607419	1.039	3.351 #
16) A 4,4'-DDD	5.906	6.750f	7787010	8607419	0.977	3.844 #
17) MA 4,4'-DDT	6.171	0.000	1377893	0	0.182	N.D. #
18) B Endrin al...	6.171f	0.000	1377893	0	0.203	N.D. #
19) B Endosulfa...	6.453	0.000	59443618	0	7.306	N.D. #
21) B Endrin ke...	6.881f	0.000	35955993	0	4.178	N.D. #
23) Chlordane-1	4.123	4.928	20643568	40861512	65.207	327.063 #
24) Chlordane-2	4.627	5.369	78166288	37074852	223.593	292.700 #
25) Chlordane-3	5.211	5.985	290.0E6	131.6E6	265.519	305.722
26) Chlordane-4	5.249	0.000	293.1E6	0	293.308	N.D. #
27) Chlordane-5	6.049	0.000	9037176	0	27.864	N.D. #

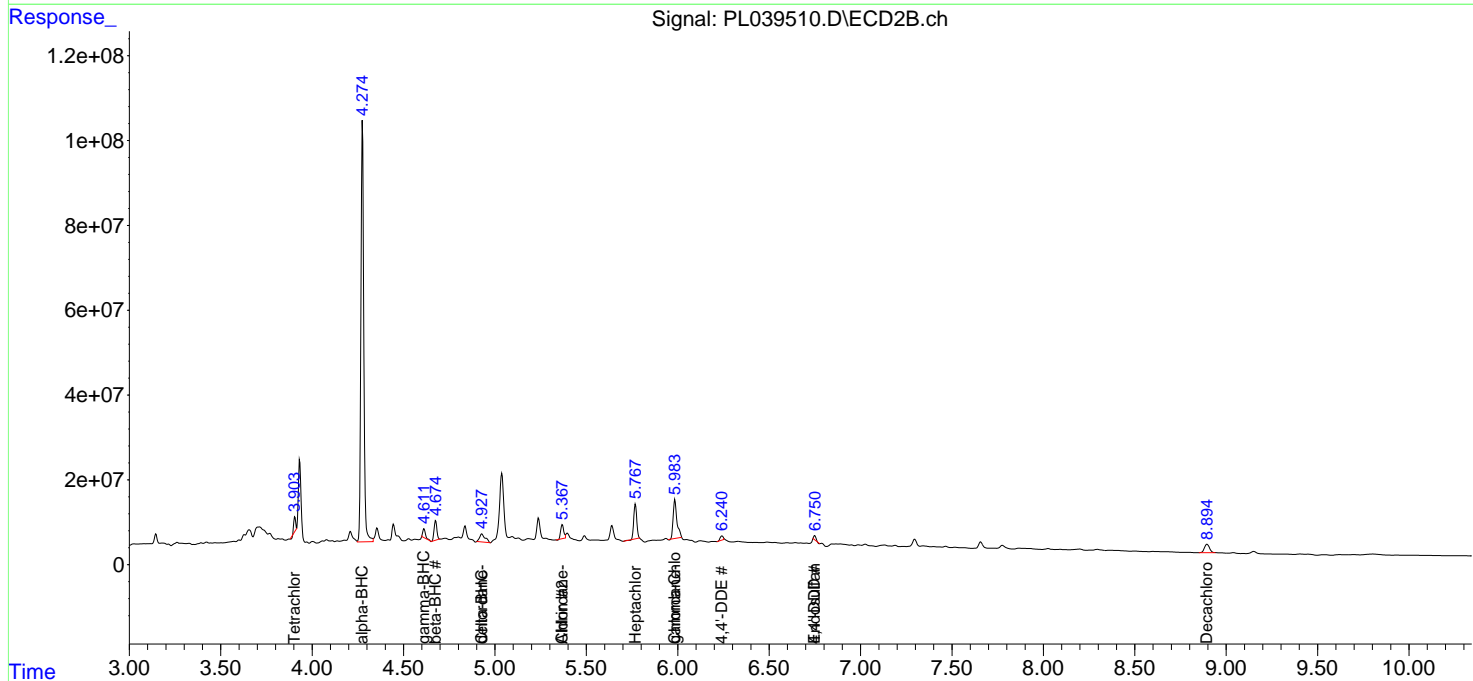
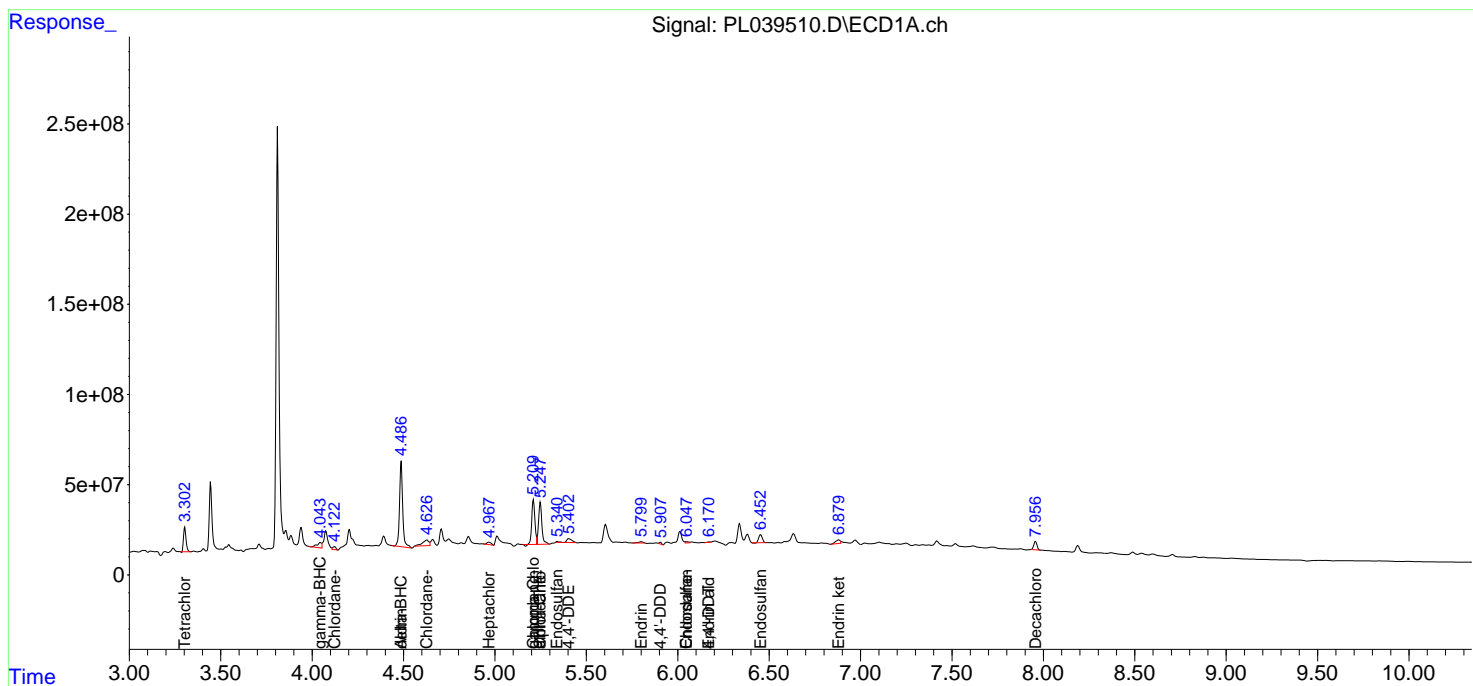
(f)=RT Delta > 1/2 Window (#)=Amounts differ by > 25% (m)=manual int.

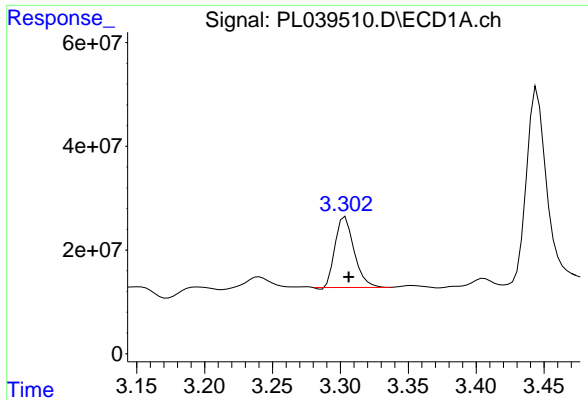
Data Path : Z:\pestpcbsrv\HPCHEM1\ECD_L\Data\PL082418\
 Data File : PL039510.D
 Signal(s) : Signal #1: ECD1A.ch Signal #2: ECD2B.ch
 Acq On : 24 Aug 2018 18:48
 Operator : AJ\SJ
 Sample : J4609-01
 Misc :
 ALS Vial : 22 Sample Multiplier: 1

Instrument :
 ECD_L
 ClientSampled :

Integration File signal 1: autoint1.e
 Integration File signal 2: autoint2.e
 Quant Time: Aug 24 23:03:34 2018
 Quant Method : Z:\pestpcbsrv\HPCHEM1\ECD_L\methods\PL081318.M
 Quant Title : GC Extractables
 QLast Update : Wed Aug 15 15:04:22 2018
 Response via : Initial Calibration
 Integrator: ChemStation

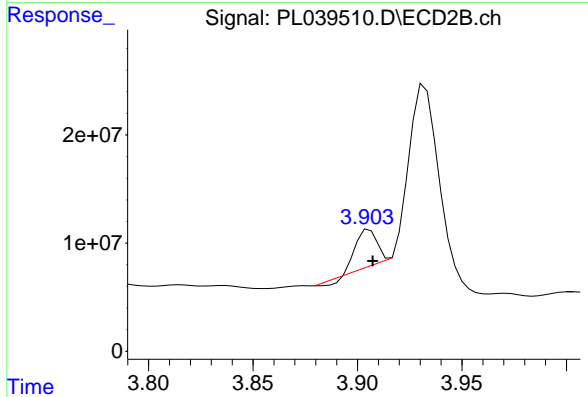
Volume Inj. : 2 µl
 Signal #1 Phase : ZB-MR1 Signal #2 Phase: ZB-MR2
 Signal #1 Info : 30M x 0.32mm x0.5 Signal #2 Info : 30M x 0.32mm x0.25µm



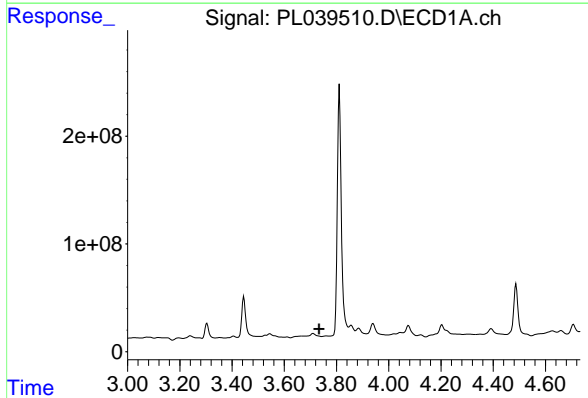


#1 Tetrachloro-m-xylene
 R.T.: 3.304 min
 Delta R.T.: -0.002 min
 Response: 132317748
 Conc: 18.93 ng/ml

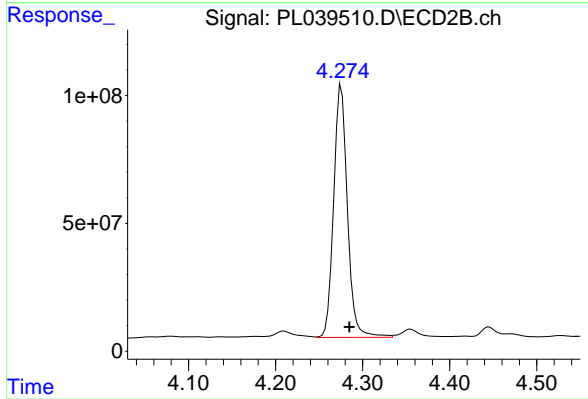
Instrument :
 ECD_L
 ClientSampled :



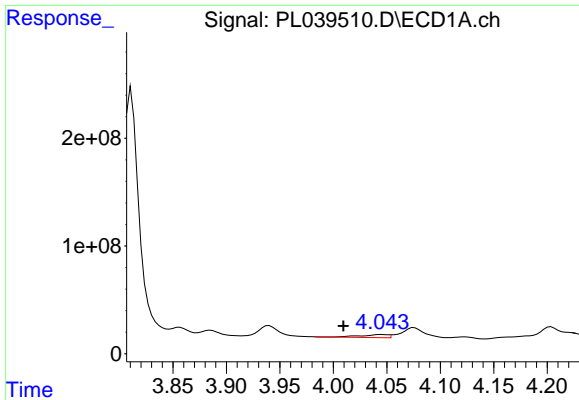
#1 Tetrachloro-m-xylene
 R.T.: 3.906 min
 Delta R.T.: -0.001 min
 Response: 21110796
 Conc: 7.87 ng/ml



#2 alpha-BHC
 R.T.: 3.761 min
 Delta R.T.: 0.027 min
 Response: -3686724
 Conc: N.D.

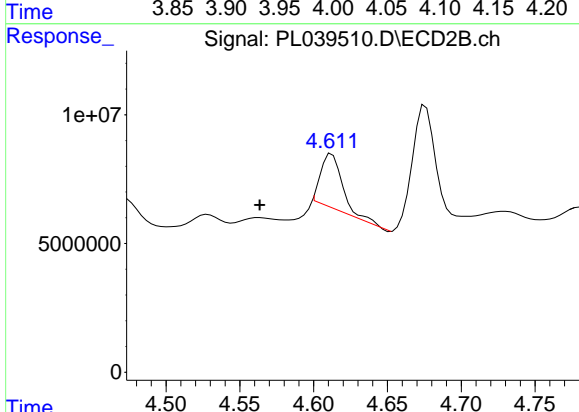


#2 alpha-BHC
 R.T.: 4.276 min
 Delta R.T.: -0.009 min
 Response: 1086392300
 Conc: 257.99 ng/ml

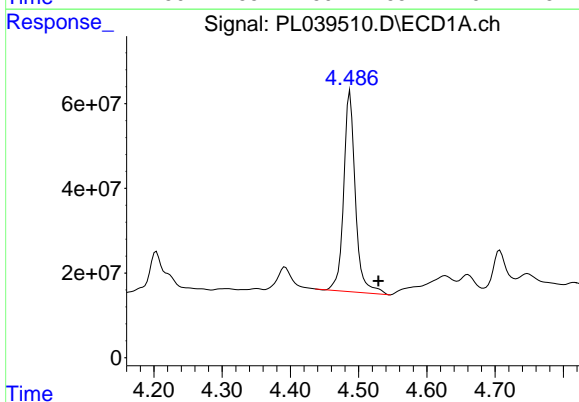


#3 gamma-BHC (Lindane)
 R.T.: 4.045 min
 Delta R.T.: 0.035 min
 Response: 50196002
 Conc: 4.73 ng/ml

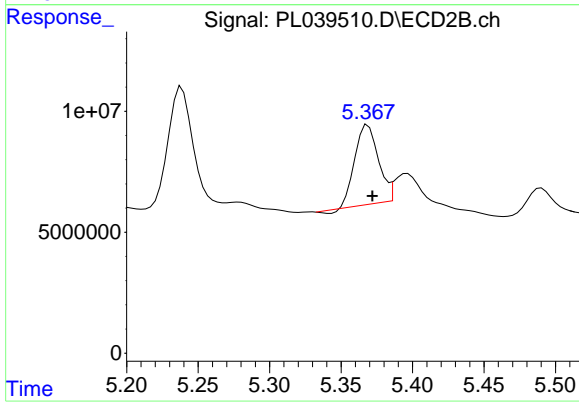
Instrument :
 ECD_L
 ClientSampleId :



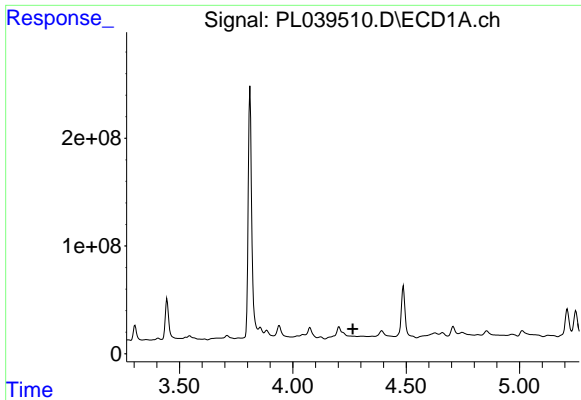
#3 gamma-BHC (Lindane)
 R.T.: 4.612 min
 Delta R.T.: 0.049 min
 Response: 21694493
 Conc: 5.39 ng/ml



#5 Aldrin
 R.T.: 4.488 min
 Delta R.T.: -0.042 min
 Response: 564907495
 Conc: 56.40 ng/ml



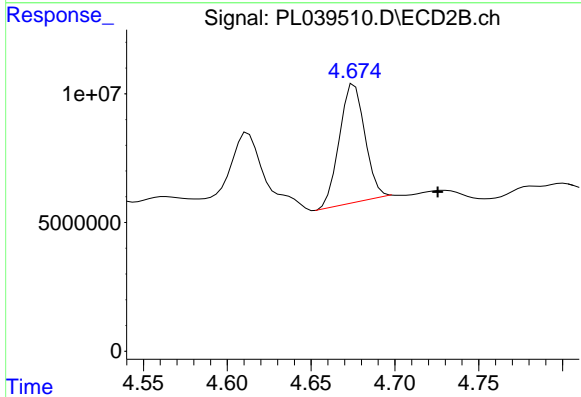
#5 Aldrin
 R.T.: 5.369 min
 Delta R.T.: -0.003 min
 Response: 37074852
 Conc: 10.47 ng/ml



#6 beta-BHC

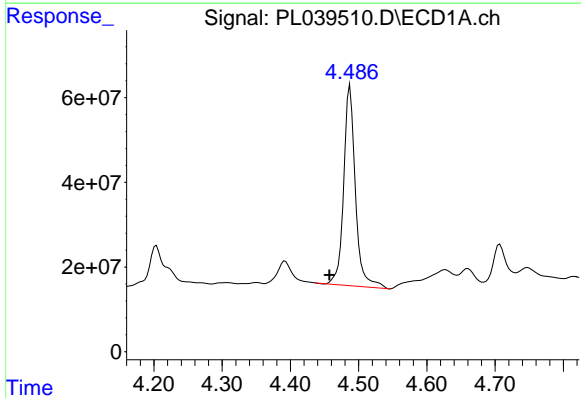
R.T.: 0.000 min
 Exp R.T.: 4.264 min
 Response: 0
 Conc: N.D.

Instrument :
 ECD_L
 ClientSampled :



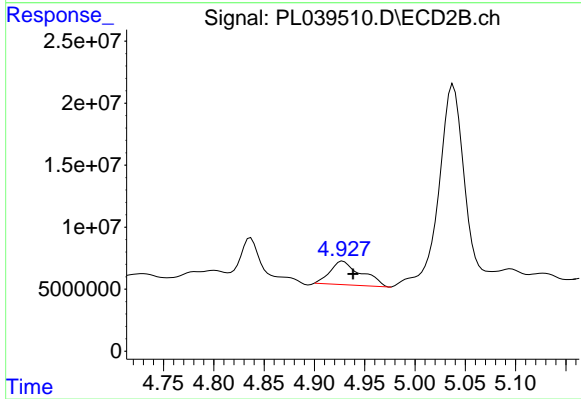
#6 beta-BHC

R.T.: 4.676 min
 Delta R.T.: -0.050 min
 Response: 47791219
 Conc: 27.29 ng/ml



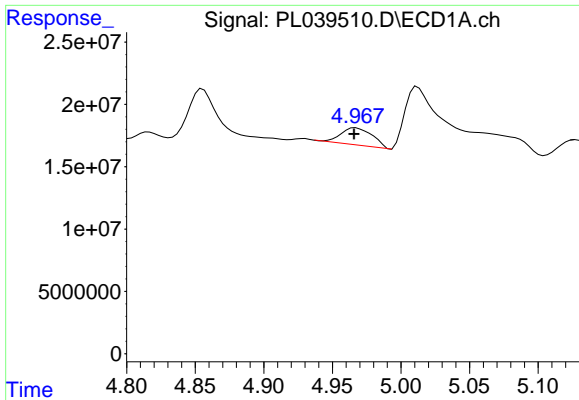
#7 delta-BHC

R.T.: 4.488 min
 Delta R.T.: 0.030 min
 Response: 564907495
 Conc: 52.04 ng/ml



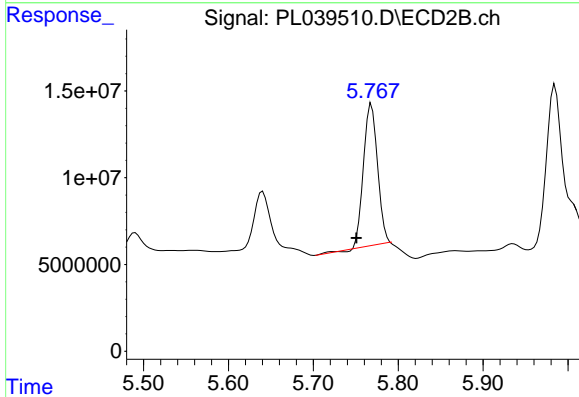
#7 delta-BHC

R.T.: 4.928 min
 Delta R.T.: -0.010 min
 Response: 40861512
 Conc: 10.26 ng/ml

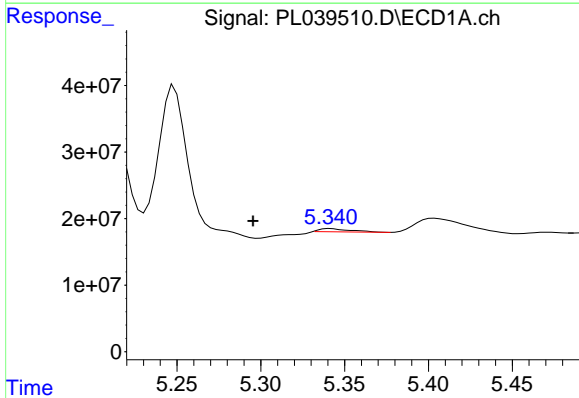


#8 Heptachlor epoxide
 R.T.: 4.967 min
 Delta R.T.: 0.001 min
 Response: 21956720
 Conc: 2.30 ng/ml

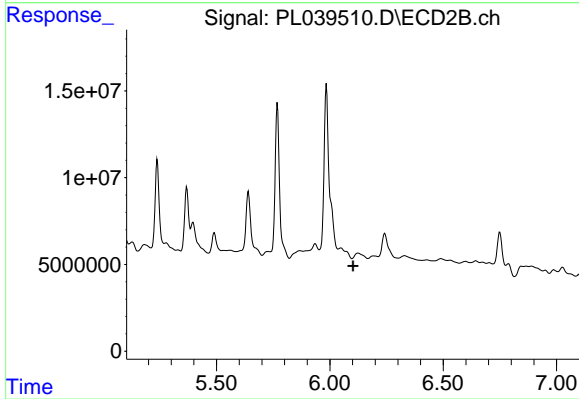
Instrument :
 ECD_L
 ClientSampled :



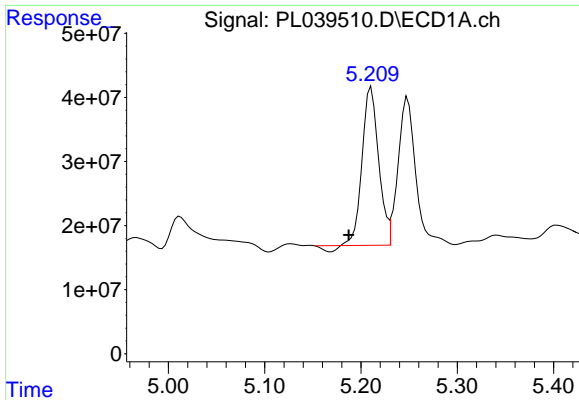
#8 Heptachlor epoxide
 R.T.: 5.769 min
 Delta R.T.: 0.018 min
 Response: 94261898
 Conc: 28.03 ng/ml



#9 Endosulfan I
 R.T.: 5.342 min
 Delta R.T.: 0.046 min
 Response: 5987304
 Conc: 0.68 ng/ml

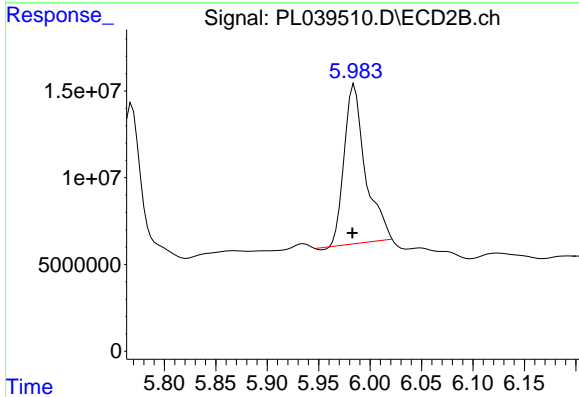


#9 Endosulfan I
 R.T.: 0.000 min
 Exp R.T. : 6.102 min
 Response: 0
 Conc: N.D.

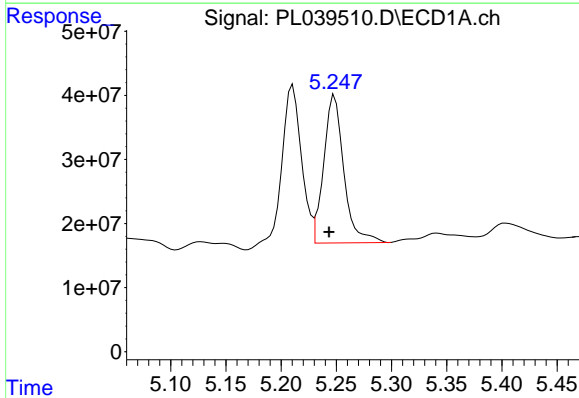


#10 gamma-Chlordane
 R.T.: 5.211 min
 Delta R.T.: 0.023 min
 Response: 290016510
 Conc: 29.36 ng/ml

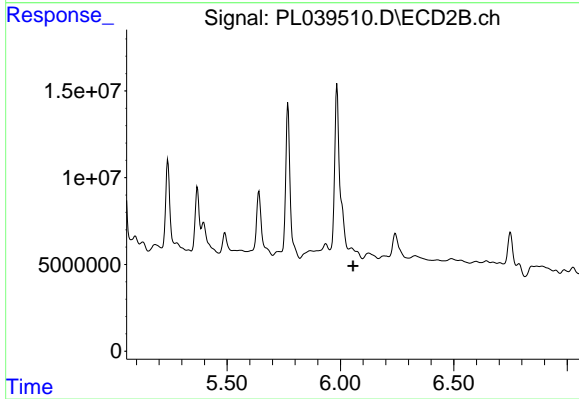
Instrument :
 ECD_L
 ClientSampled :



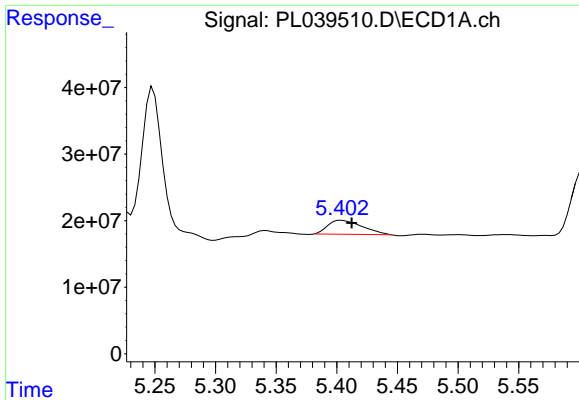
#10 gamma-Chlordane
 R.T.: 5.985 min
 Delta R.T.: 0.002 min
 Response: 131572791
 Conc: 40.65 ng/ml



#11 alpha-Chlordane
 R.T.: 5.249 min
 Delta R.T.: 0.005 min
 Response: 293117894
 Conc: 30.51 ng/ml

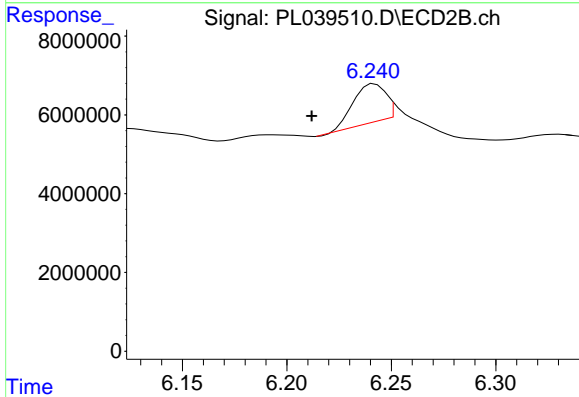


#11 alpha-Chlordane
 R.T.: 0.000 min
 Exp R.T. : 6.056 min
 Response: 0
 Conc: N.D.

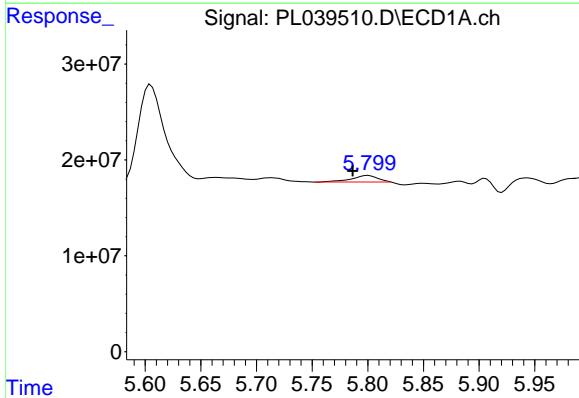


#12 4,4'-DDE
 R.T.: 5.404 min
 Delta R.T.: -0.009 min
 Response: 41290107
 Conc: 4.31 ng/ml

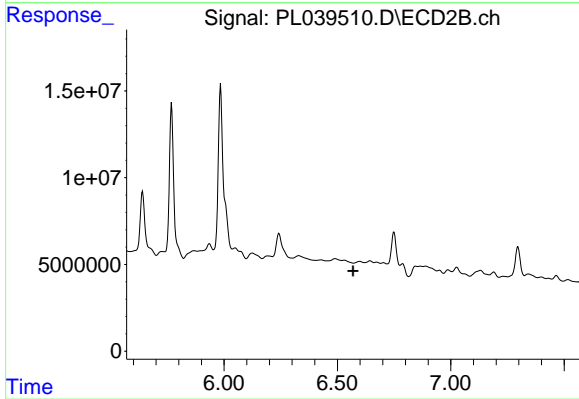
Instrument :
 ECD_L
 ClientSampled :



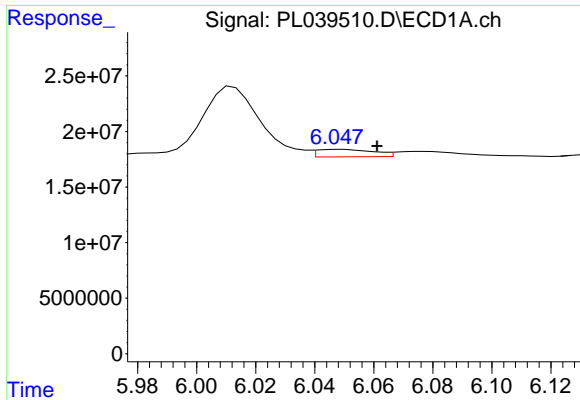
#12 4,4'-DDE
 R.T.: 6.242 min
 Delta R.T.: 0.030 min
 Response: 11028630
 Conc: 3.57 ng/ml



#14 Endrin
 R.T.: 5.800 min
 Delta R.T.: 0.014 min
 Response: 11367582
 Conc: 1.27 ng/ml

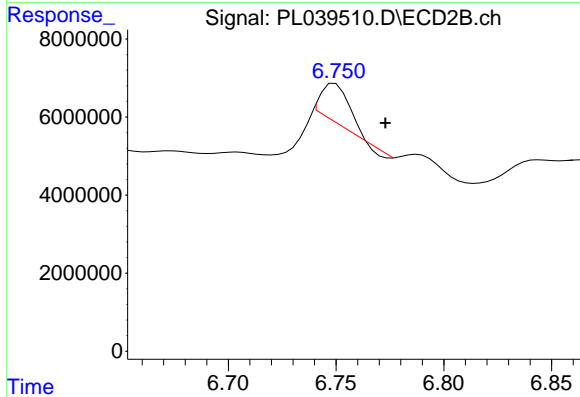


#14 Endrin
 R.T.: 0.000 min
 Exp R.T. : 6.570 min
 Response: 0
 Conc: N.D.

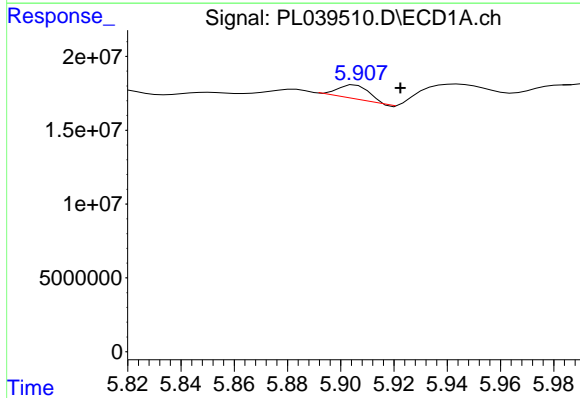


#15 Endosulfan II
 R.T.: 6.049 min
 Delta R.T.: -0.012 min
 Response: 9037176
 Conc: 1.04 ng/ml

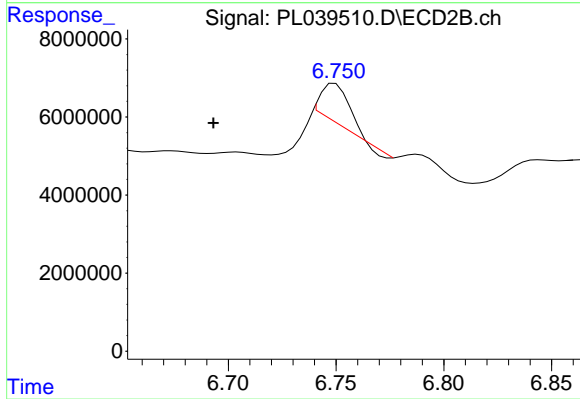
Instrument :
 ECD_L
 ClientSampled :



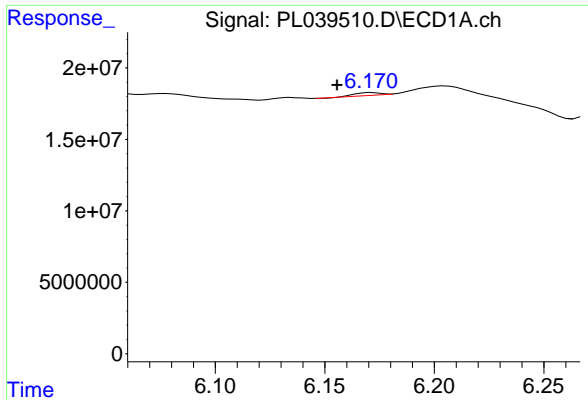
#15 Endosulfan II
 R.T.: 6.750 min
 Delta R.T.: -0.023 min
 Response: 8607419
 Conc: 3.35 ng/ml



#16 4,4'-DDD
 R.T.: 5.906 min
 Delta R.T.: -0.017 min
 Response: 7787010
 Conc: 0.98 ng/ml

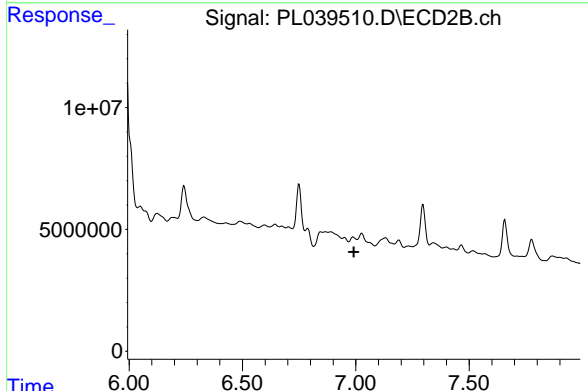


#16 4,4'-DDD
 R.T.: 6.750 min
 Delta R.T.: 0.057 min
 Response: 8607419
 Conc: 3.84 ng/ml

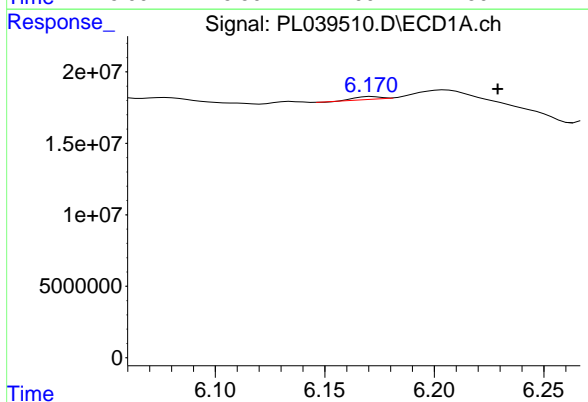


#17 4,4'-DDT
 R.T.: 6.171 min
 Delta R.T.: 0.016 min
 Response: 1377893
 Conc: 0.18 ng/ml

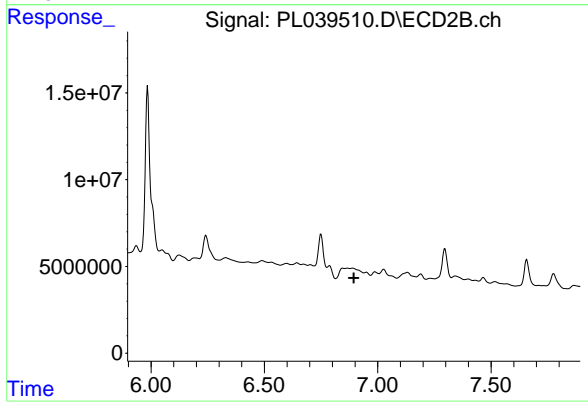
Instrument :
 ECD_L
 ClientSampled :



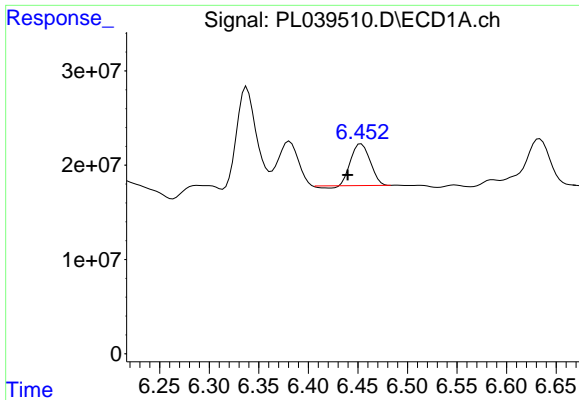
#17 4,4'-DDT
 R.T.: 0.000 min
 Exp R.T. : 6.991 min
 Response: 0
 Conc: N.D.



#18 Endrin aldehyde
 R.T.: 6.171 min
 Delta R.T.: -0.058 min
 Response: 1377893
 Conc: 0.20 ng/ml

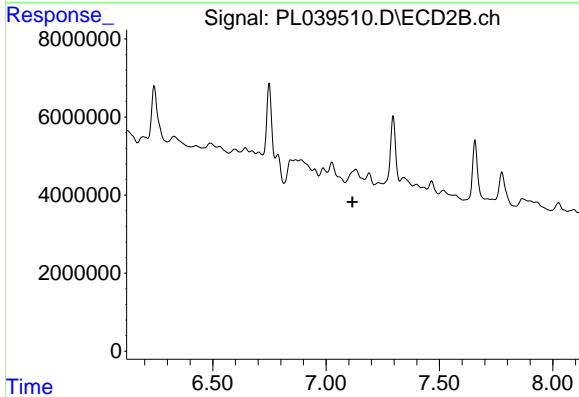


#18 Endrin aldehyde
 R.T.: 0.000 min
 Exp R.T. : 6.895 min
 Response: 0
 Conc: N.D.

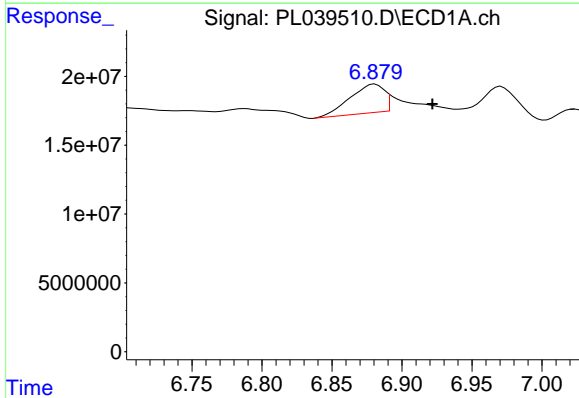


#19 Endosulfan Sulfate
 R.T.: 6.453 min
 Delta R.T.: 0.014 min
 Response: 59443618
 Conc: 7.31 ng/ml

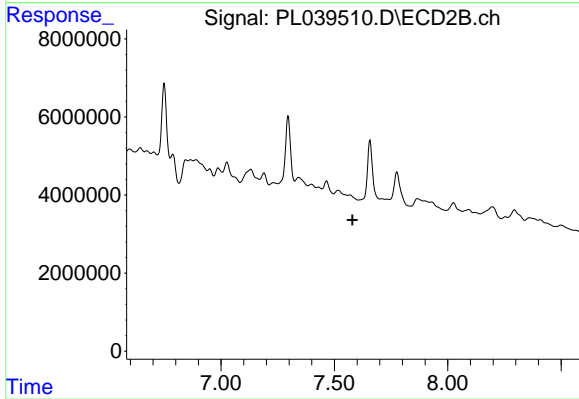
Instrument :
 ECD_L
 ClientSampled :



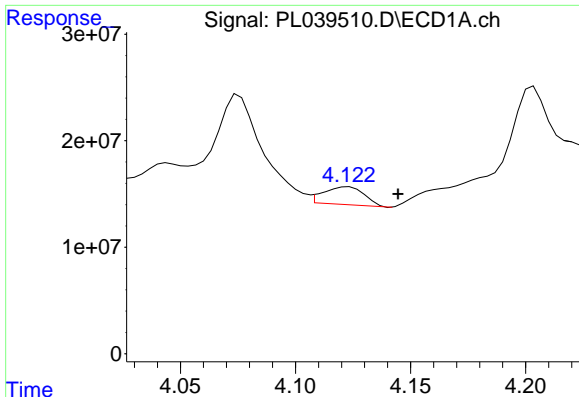
#19 Endosulfan Sulfate
 R.T.: 0.000 min
 Exp R.T. : 7.117 min
 Response: 0
 Conc: N.D.



#21 Endrin ketone
 R.T.: 6.881 min
 Delta R.T.: -0.041 min
 Response: 35955993
 Conc: 4.18 ng/ml



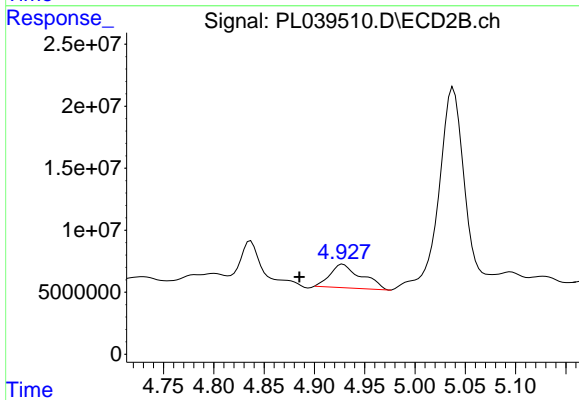
#21 Endrin ketone
 R.T.: 0.000 min
 Exp R.T. : 7.580 min
 Response: 0
 Conc: N.D.



#23 Chlordane-1

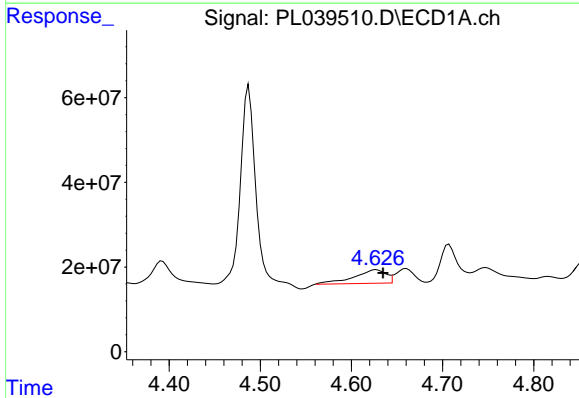
R.T.: 4.123 min
 Delta R.T.: -0.021 min
 Response: 20643568
 Conc: 65.21 ng/ml

Instrument :
 ECD_L
 ClientSampled :



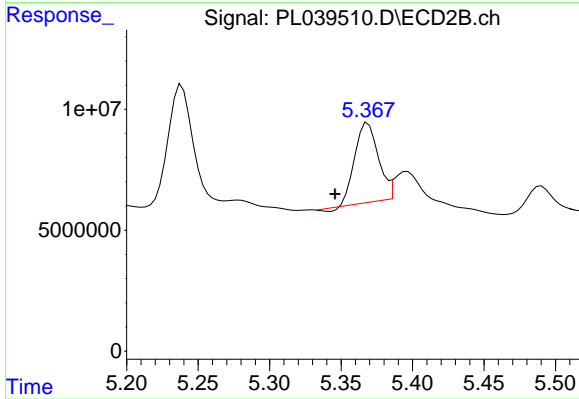
#23 Chlordane-1

R.T.: 4.928 min
 Delta R.T.: 0.043 min
 Response: 40861512
 Conc: 327.06 ng/ml



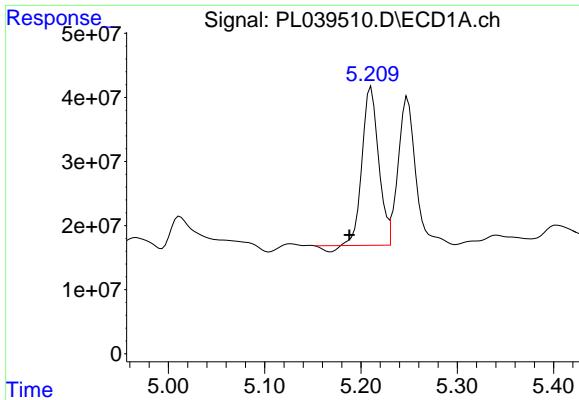
#24 Chlordane-2

R.T.: 4.627 min
 Delta R.T.: -0.007 min
 Response: 78166288
 Conc: 223.59 ng/ml



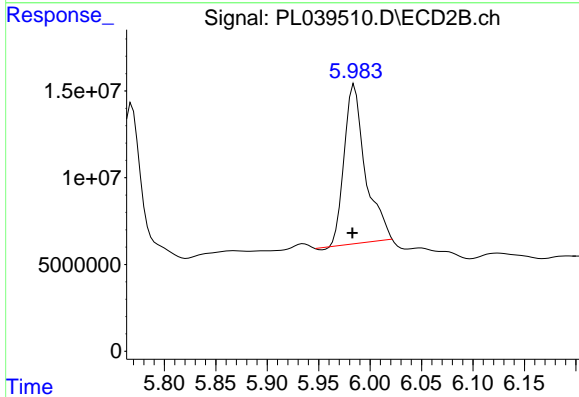
#24 Chlordane-2

R.T.: 5.369 min
 Delta R.T.: 0.023 min
 Response: 37074852
 Conc: 292.70 ng/ml

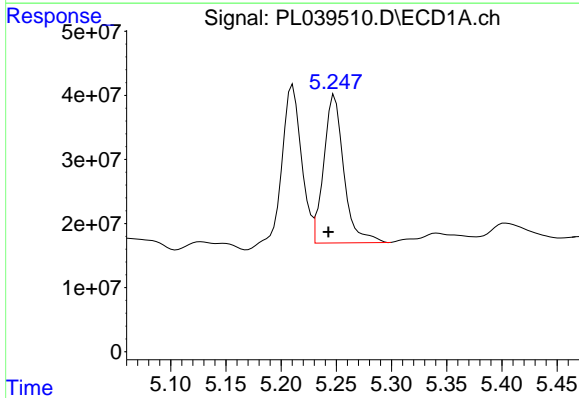


#25 Chlordane-3
 R.T.: 5.211 min
 Delta R.T.: 0.023 min
 Response: 290016510
 Conc: 265.52 ng/ml

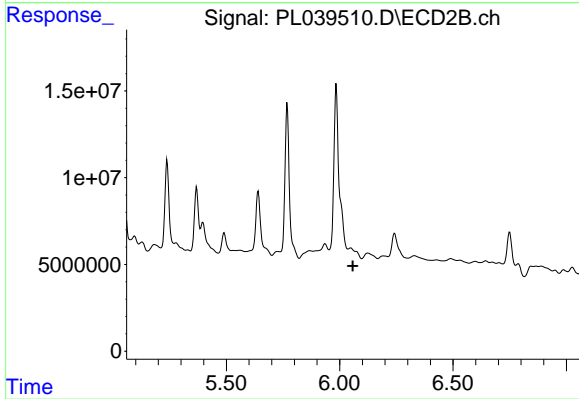
Instrument :
 ECD_L
 ClientSampled :



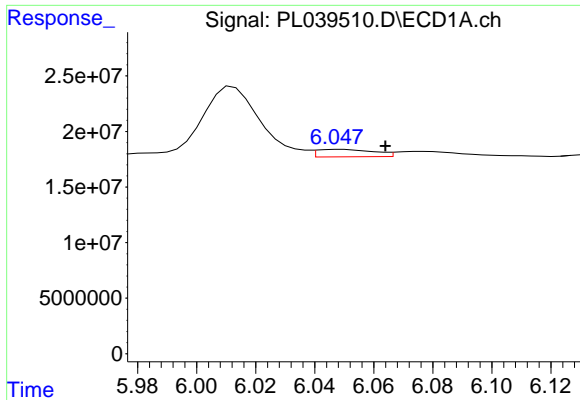
#25 Chlordane-3
 R.T.: 5.985 min
 Delta R.T.: 0.002 min
 Response: 131572791
 Conc: 305.72 ng/ml



#26 Chlordane-4
 R.T.: 5.249 min
 Delta R.T.: 0.006 min
 Response: 293117894
 Conc: 293.31 ng/ml



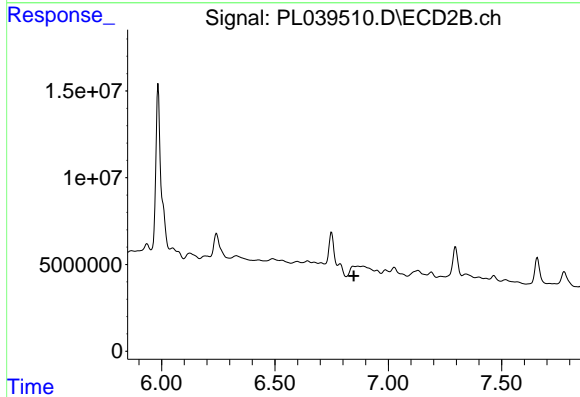
#26 Chlordane-4
 R.T.: 0.000 min
 Exp R.T. : 6.058 min
 Response: 0
 Conc: N.D.



#27 Chlordane-5

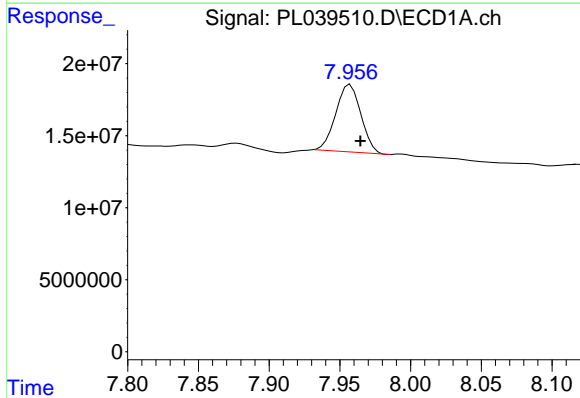
R.T.: 6.049 min
 Delta R.T.: -0.015 min
 Response: 9037176
 Conc: 27.86 ng/ml

Instrument :
 ECD_L
 ClientSampled :



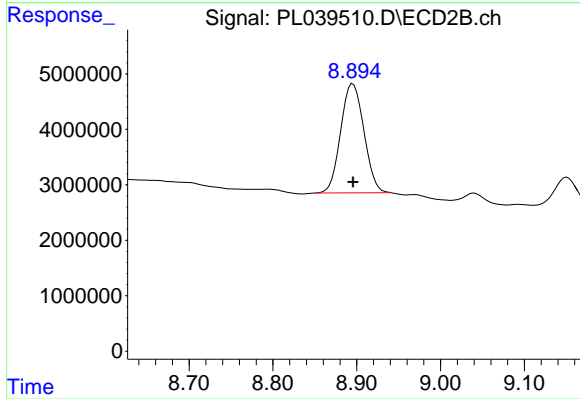
#27 Chlordane-5

R.T.: 0.000 min
 Exp R.T. : 6.848 min
 Response: 0
 Conc: N.D.



#28 Decachlorobiphenyl

R.T.: 7.957 min
 Delta R.T.: -0.007 min
 Response: 57997457
 Conc: 8.26 ng/ml



#28 Decachlorobiphenyl

R.T.: 8.895 min
 Delta R.T.: 0.000 min
 Response: 37989396
 Conc: 16.37 ng/ml