

Data Path : Z:\pestpcbsrv\HPCHEM1\ECD_L\Data\PL082619\
 Data File : PL051801.D
 Signal(s) : Signal #1: ECD1A.ch Signal #2: ECD2B.ch
 Acq On : 26 Aug 2019 14:12
 Operator : SG\AJ
 Sample : I.BLK
 Misc :
 ALS Vial : 2 Sample Multiplier: 1

Instrument :
 ECD_L
 ClientSampleId :

Integration File signal 1: autoint1.e
 Integration File signal 2: autoint2.e
 Quant Time: Aug 27 00:44:16 2019
 Quant Method : Z:\pestpcbsrv\HPCHEM1\ECD_L\methods\PL081919.M
 Quant Title : GC Extractables
 QLast Update : Mon Aug 19 18:03:07 2019
 Response via : Initial Calibration
 Integrator: ChemStation

Volume Inj. : 1 µl
 Signal #1 Phase : ZB-MR2 Signal #2 Phase: ZB-MR1
 Signal #1 Info : 30M x 0.32mm x0.2 Signal #2 Info : 30M x 0.32mm x0.5µm

Compound	RT#1	RT#2	Resp#1	Resp#2	ng/ml	ng/ml

System Monitoring Compounds						
1) SA Tetrachlo...	3.321	3.925	216.9E6	52101583	25.344	23.847
28) SA Decachlor...	7.980	8.953	266.0E6	62170879	21.912	20.425

Target Compounds

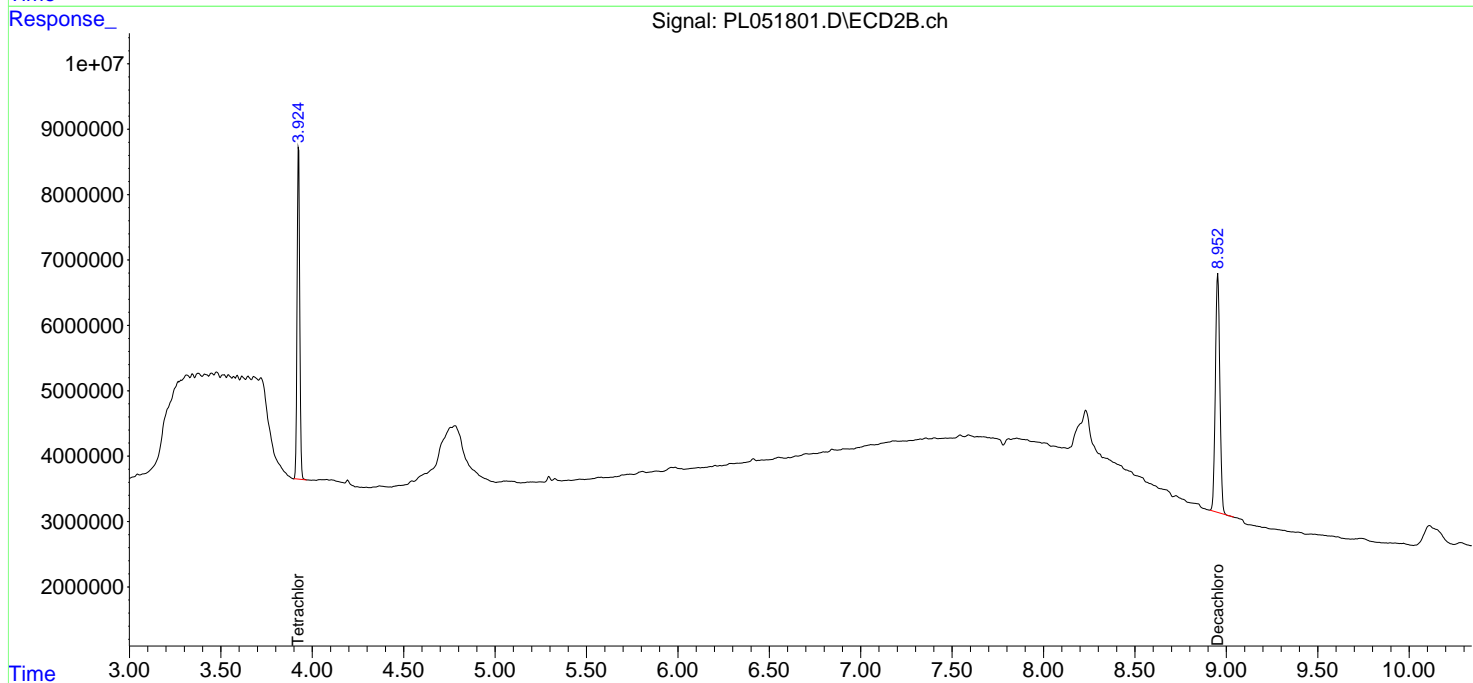
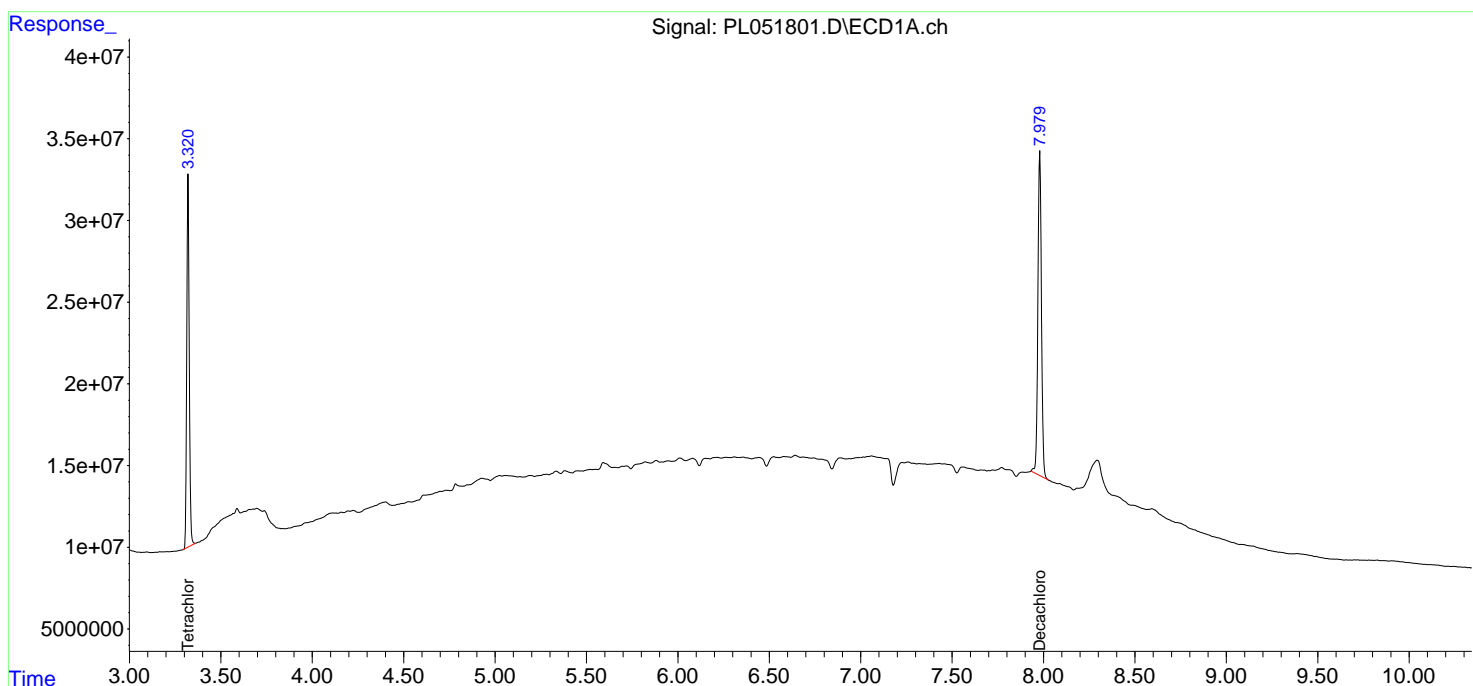
(f)=RT Delta > 1/2 Window (#)=Amounts differ by > 25% (m)=manual int.

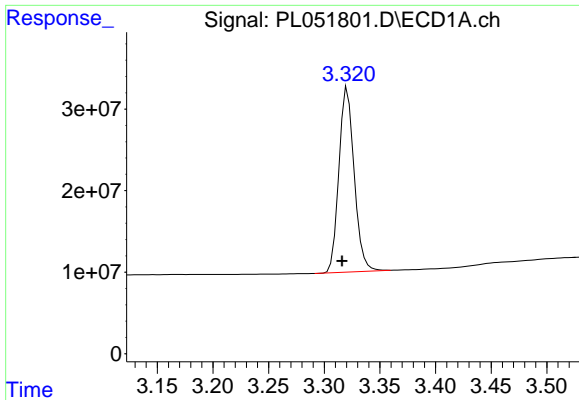
Data Path : Z:\pestpcbsrv\HPCHEM1\ECD_L\Data\PL082619\
 Data File : PL051801.D
 Signal(s) : Signal #1: ECD1A.ch Signal #2: ECD2B.ch
 Acq On : 26 Aug 2019 14:12
 Operator : SG\AJ
 Sample : I.BLK
 Misc :
 ALS Vial : 2 Sample Multiplier: 1

Instrument :
 ECD_L
 ClientSampled :

Integration File signal 1: autoint1.e
 Integration File signal 2: autoint2.e
 Quant Time: Aug 27 00:44:16 2019
 Quant Method : Z:\pestpcbsrv\HPCHEM1\ECD_L\methods\PL081919.M
 Quant Title : GC Extractables
 QLast Update : Mon Aug 19 18:03:07 2019
 Response via : Initial Calibration
 Integrator: ChemStation

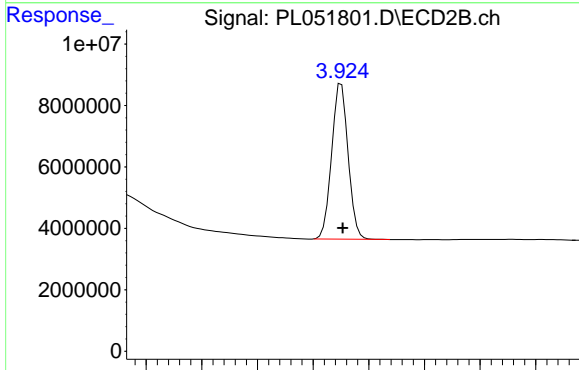
Volume Inj. : 1 µl
 Signal #1 Phase : ZB-MR2 Signal #2 Phase: ZB-MR1
 Signal #1 Info : 30M x 0.32mm x0.2 Signal #2 Info : 30M x 0.32mm x0.5µm



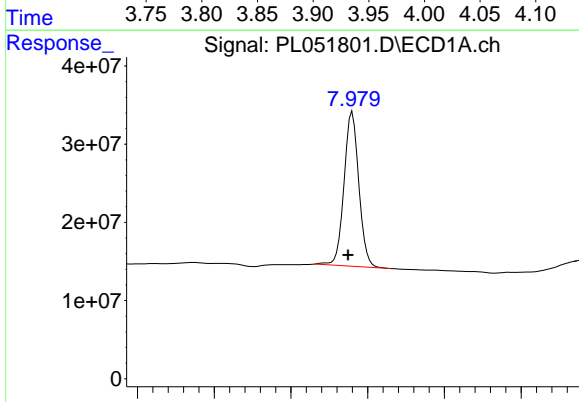


#1 Tetrachloro-m-xylene
 R.T.: 3.321 min
 Delta R.T.: 0.005 min
 Response: 216907870
 Conc: 25.34 ng/ml

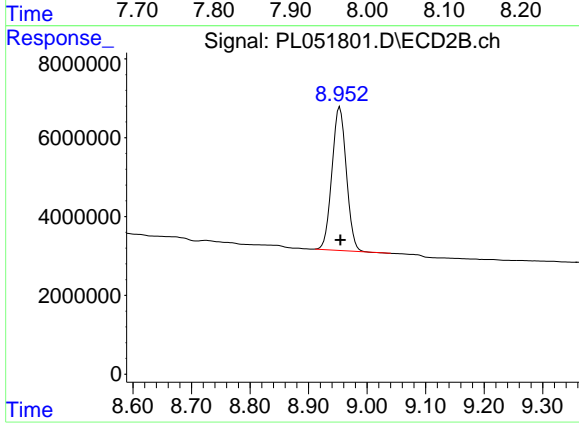
Instrument :
 ECD_L
 ClientSampleId :



#1 Tetrachloro-m-xylene
 R.T.: 3.925 min
 Delta R.T.: -0.001 min
 Response: 52101583
 Conc: 23.85 ng/ml



#28 Decachlorobiphenyl
 R.T.: 7.980 min
 Delta R.T.: 0.005 min
 Response: 265958445
 Conc: 21.91 ng/ml



#28 Decachlorobiphenyl
 R.T.: 8.953 min
 Delta R.T.: 0.000 min
 Response: 62170879
 Conc: 20.42 ng/ml