

Data Path : Z:\pestpcbsrv\HPCHEM1\ECD_L\Data\PL082721\
 Data File : PL069535.D
 Signal(s) : Signal #1: ECD1A.ch Signal #2: ECD2B.ch
 Acq On : 27 Aug 2021 18:15
 Operator : AR\AJ
 Sample : PB138601BL
 Misc :
 ALS Vial : 22 Sample Multiplier: 1

Instrument :
 ECD_L
 ClientSampleId :
 PB138601BL

Integration File signal 1: autoint1.e
 Integration File signal 2: autoint2.e
 Quant Time: Aug 28 00:49:28 2021
 Quant Method : Z:\pestpcbsrv\HPCHEM1\ECD_L\methods\PL082021.M
 Quant Title : GC Extractables
 QLast Update : Sat Aug 21 02:23:37 2021
 Response via : Initial Calibration
 Integrator: ChemStation

Volume Inj. : 1 µl
 Signal #1 Phase : ZB-MR2 Signal #2 Phase: ZB-MR1
 Signal #1 Info : 30M x 0.32mm x0.2 Signal #2 Info : 30M x 0.32mm x0.5µm

Compound	RT#1	RT#2	Resp#1	Resp#2	ng/ml	ng/ml
System Monitoring Compounds						
1) SA Tetrachlo...	4.631	5.566	8470854	28704179	18.360	20.038
28) SA Decachlor...	10.397	11.485	13006481	26795262	19.270	21.863
Target Compounds						
5) MB Aldrin	0.000	7.562	0	1025977	N.D.	0.617 #
6) B beta-BHC	0.000	6.801	0	1707625	N.D.	1.817 #
7) B delta-BHC	0.000	7.061	0	1394109	N.D.	0.755 #
8) B Heptachlo...	0.000	8.033	0	8898185	N.D.	5.915 #
10) B gamma-Chl...	0.000	8.297	0	4101301	N.D.	2.666 #
11) B alpha-Chl...	0.000	8.378	0	2799916	N.D.	1.874 #
12) B 4,4'-DDE	7.631	8.563	7118306	1839610	12.586	1.315 #
13) MA Dieldrin	7.764	0.000	573822	0	0.945	N.D. #
14) MA Endrin	8.074f	0.000	3007674	0	5.208	N.D. #
15) B Endosulfa...	8.361	9.196	823616	3238631	1.482	2.737 #
17) MA 4,4'-DDT	0.000	9.425	0	2061859	N.D.	1.683 #
18) B Endrin al...	0.000	9.330	0	4149377	N.D.	4.362 #
19) B Endosulfa...	8.780	9.568	1089017	1942618	1.834	1.710
21) B Endrin ke...	0.000	10.065	0	2111911	N.D.	1.632 #
24) Chlordane-2	0.000	7.562f	0	1025977	N.D.	17.909 #
25) Chlordane-3	0.000	8.297	0	4101301	N.D.	19.152 #
26) Chlordane-4	0.000	8.378	0	2799916	N.D.	10.878 #
27) Chlordane-5	8.361	0.000	823616	0	32.293	N.D. #

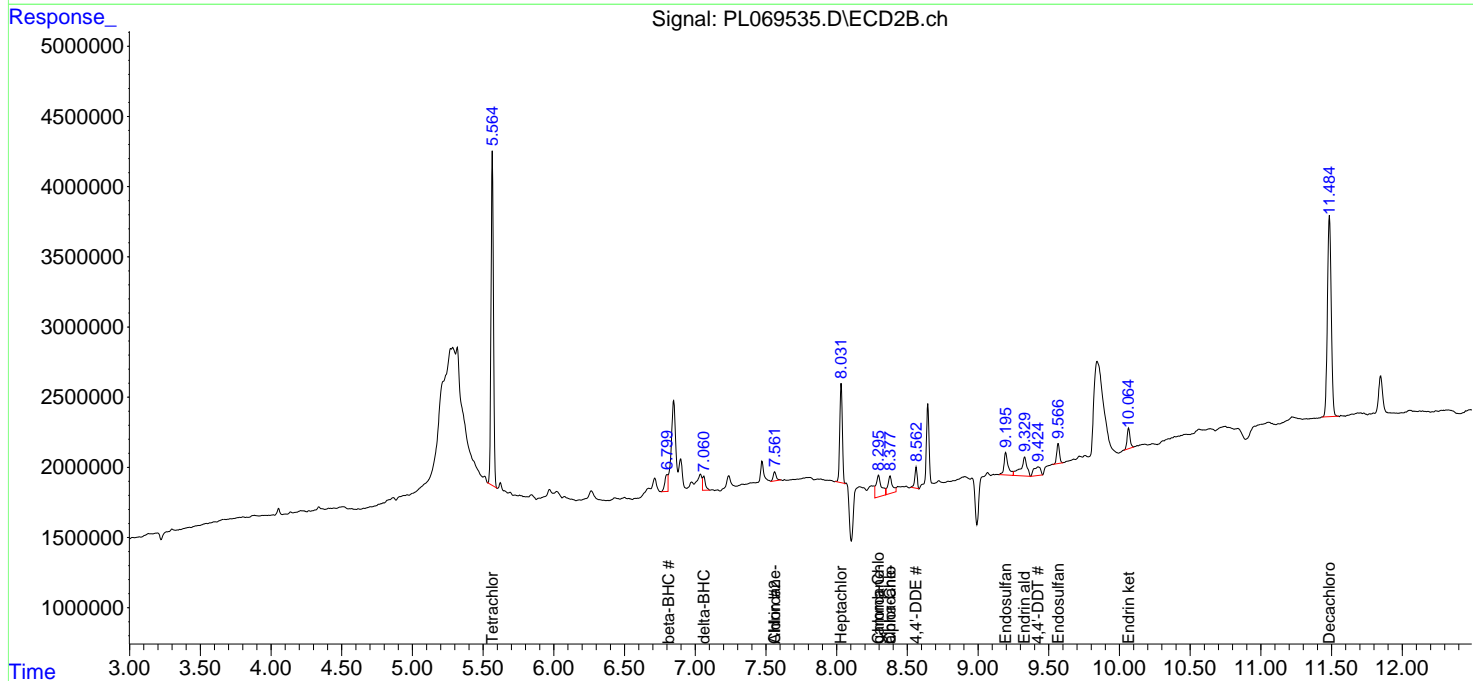
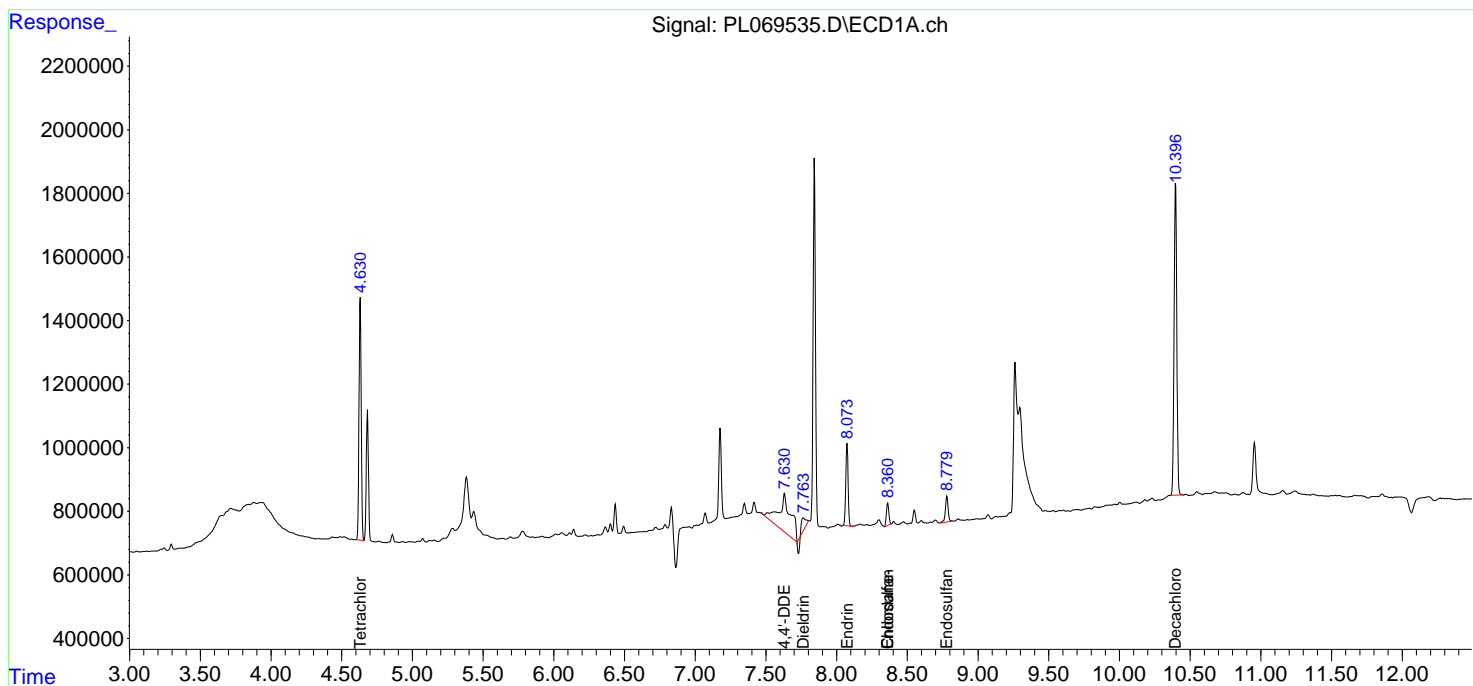
(f)=RT Delta > 1/2 Window (#)=Amounts differ by > 25% (m)=manual int.

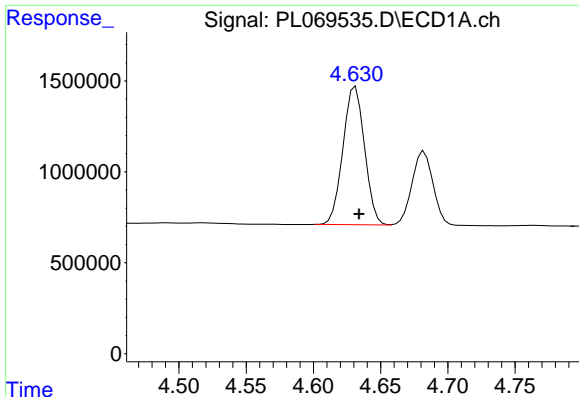
Data Path : Z:\pestpcbsrv\HPCHEM1\ECD_L\Data\PL082721\
 Data File : PL069535.D
 Signal(s) : Signal #1: ECD1A.ch Signal #2: ECD2B.ch
 Acq On : 27 Aug 2021 18:15
 Operator : AR\AJ
 Sample : PB138601BL
 Misc :
 ALS Vial : 22 Sample Multiplier: 1

Instrument :
 ECD_L
 ClientSampled :
 PB138601BL

Integration File signal 1: autoint1.e
 Integration File signal 2: autoint2.e
 Quant Time: Aug 28 00:49:28 2021
 Quant Method : Z:\pestpcbsrv\HPCHEM1\ECD_L\methods\PL082021.M
 Quant Title : GC Extractables
 QLast Update : Sat Aug 21 02:23:37 2021
 Response via : Initial Calibration
 Integrator: ChemStation

Volume Inj. : 1 µl
 Signal #1 Phase : ZB-MR2 Signal #2 Phase: ZB-MR1
 Signal #1 Info : 30M x 0.32mm x0.2 Signal #2 Info : 30M x 0.32mm x0.5µm

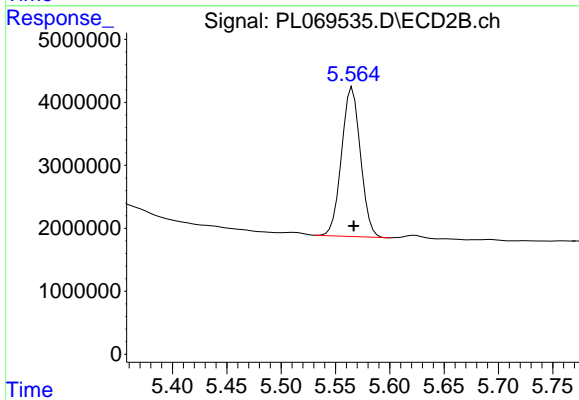




#1 Tetrachloro-m-xylene

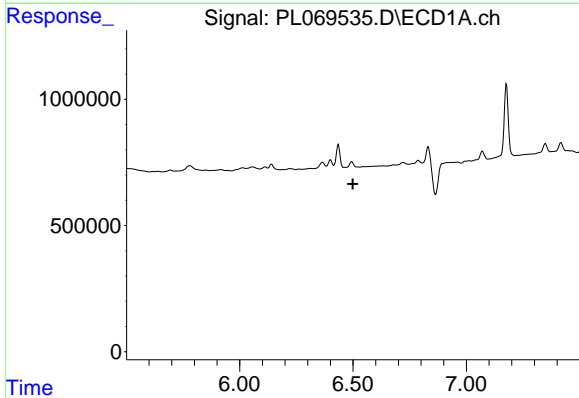
R.T.: 4.631 min
 Delta R.T.: -0.003 min
 Response: 8470854
 Conc: 18.36 ng/ml

Instrument :
 ECD_L
 ClientSampleId :
 PB138601BL



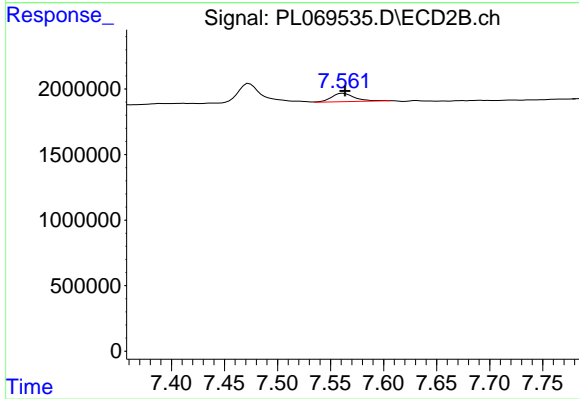
#1 Tetrachloro-m-xylene

R.T.: 5.566 min
 Delta R.T.: -0.001 min
 Response: 28704179
 Conc: 20.04 ng/ml



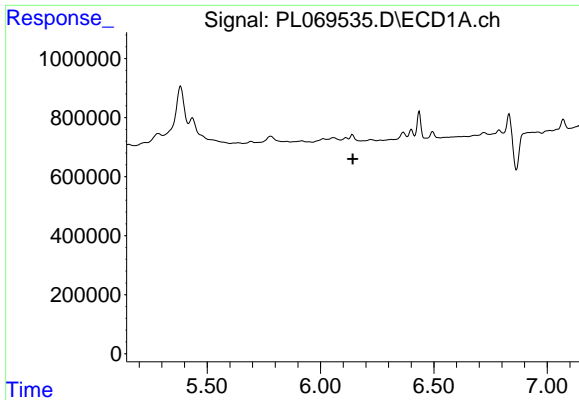
#5 Aldrin

R.T.: 0.000 min
 Exp R.T. : 6.499 min
 Response: 0
 Conc: N.D.



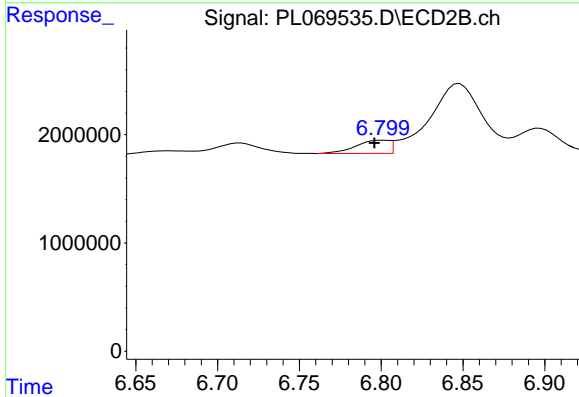
#5 Aldrin

R.T.: 7.562 min
 Delta R.T.: -0.002 min
 Response: 1025977
 Conc: 0.62 ng/ml

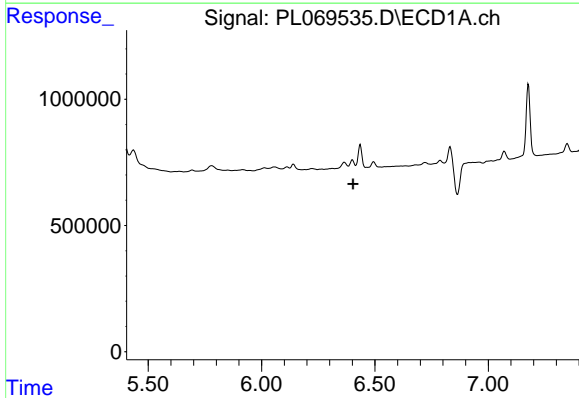


#6 beta-BHC
 R.T.: 0.000 min
 Exp R.T.: 6.143 min
 Response: 0
 Conc: N.D.

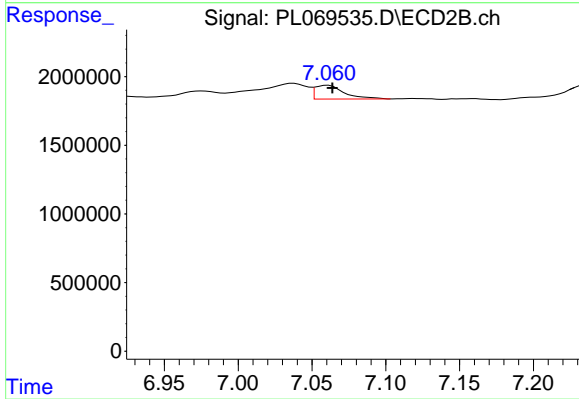
Instrument :
 ECD_L
 ClientSampleId :
 PB138601BL



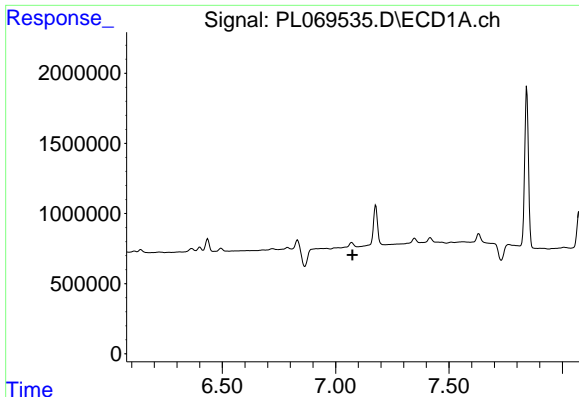
#6 beta-BHC
 R.T.: 6.801 min
 Delta R.T.: 0.005 min
 Response: 1707625
 Conc: 1.82 ng/ml



#7 delta-BHC
 R.T.: 0.000 min
 Exp R.T.: 6.404 min
 Response: 0
 Conc: N.D.



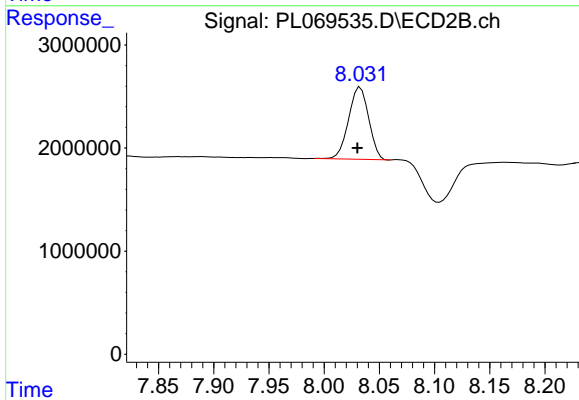
#7 delta-BHC
 R.T.: 7.061 min
 Delta R.T.: -0.003 min
 Response: 1394109
 Conc: 0.75 ng/ml



#8 Heptachlor epoxide

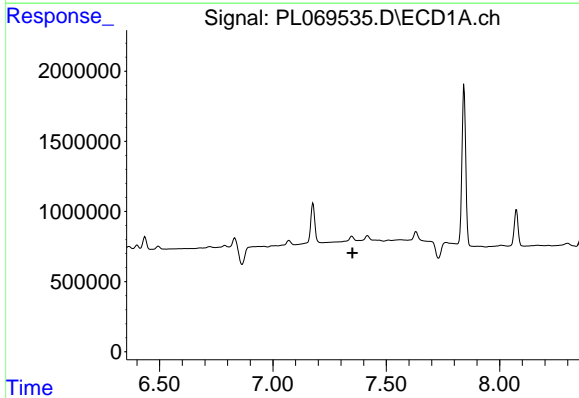
R.T.: 0.000 min
 Exp R.T. : 7.075 min
 Response: 0
 Conc: N.D.

Instrument :
 ECD_L
 ClientSampleId :
 PB138601BL



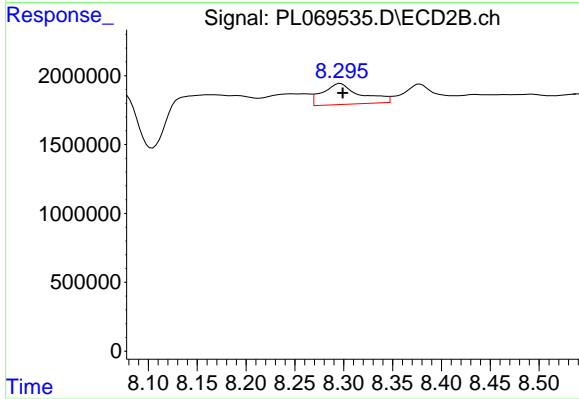
#8 Heptachlor epoxide

R.T.: 8.033 min
 Delta R.T.: 0.003 min
 Response: 8898185
 Conc: 5.92 ng/ml



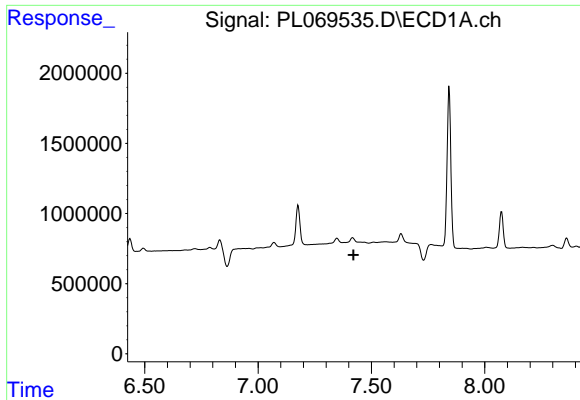
#10 gamma-Chlordane

R.T.: 0.000 min
 Exp R.T. : 7.352 min
 Response: 0
 Conc: N.D.



#10 gamma-Chlordane

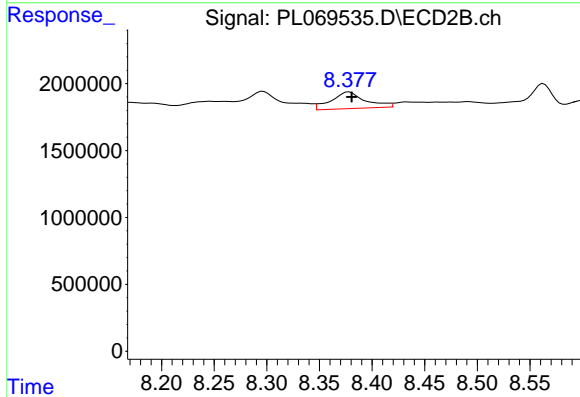
R.T.: 8.297 min
 Delta R.T.: -0.002 min
 Response: 4101301
 Conc: 2.67 ng/ml



#11 alpha-Chlordane

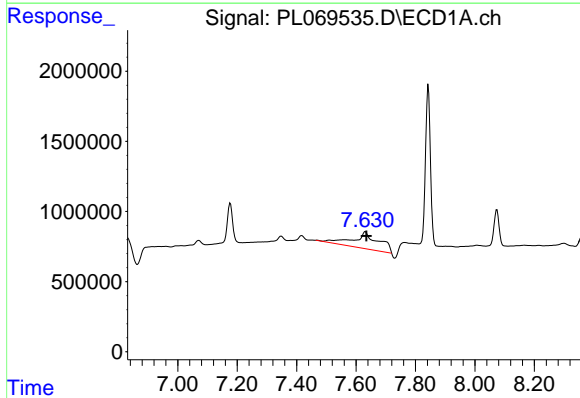
R.T.: 0.000 min
 Exp R.T.: 7.422 min
 Response: 0
 Conc: N.D.

Instrument :
 ECD_L
 ClientSampleId :
 PB138601BL



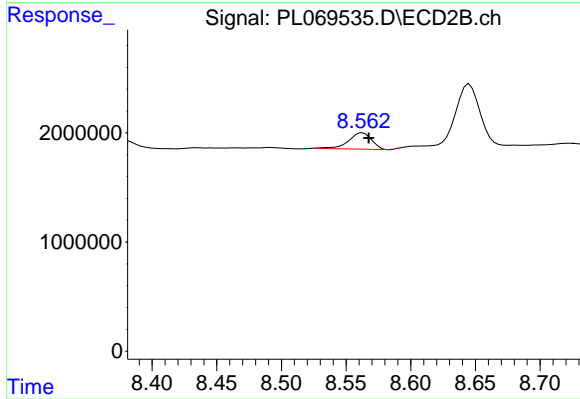
#11 alpha-Chlordane

R.T.: 8.378 min
 Delta R.T.: -0.003 min
 Response: 2799916
 Conc: 1.87 ng/ml



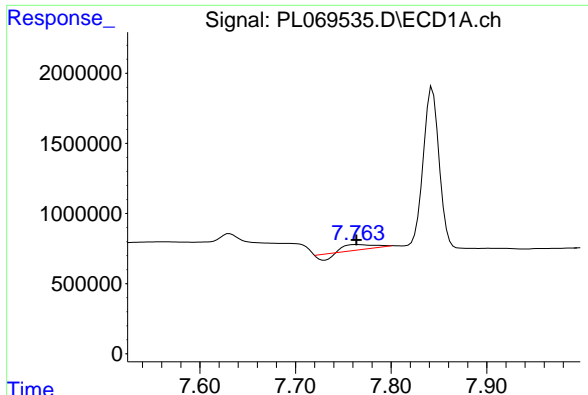
#12 4,4'-DDE

R.T.: 7.631 min
 Delta R.T.: -0.004 min
 Response: 7118306
 Conc: 12.59 ng/ml



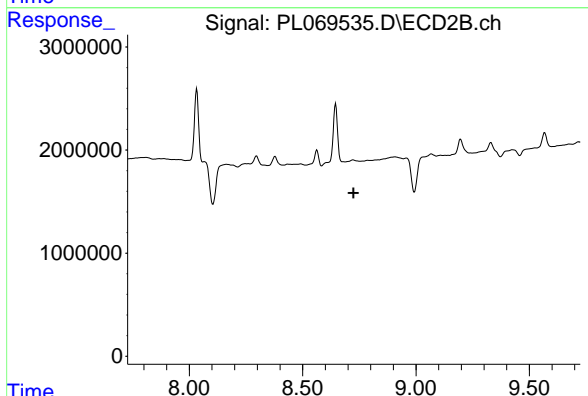
#12 4,4'-DDE

R.T.: 8.563 min
 Delta R.T.: -0.005 min
 Response: 1839610
 Conc: 1.32 ng/ml

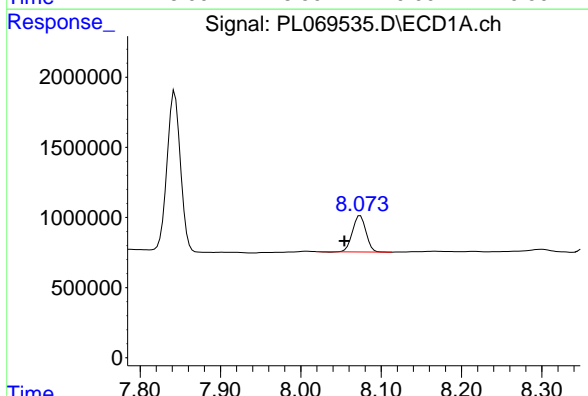


#13 Dieldrin
 R.T.: 7.764 min
 Delta R.T.: 0.000 min
 Response: 573822
 Conc: 0.94 ng/ml

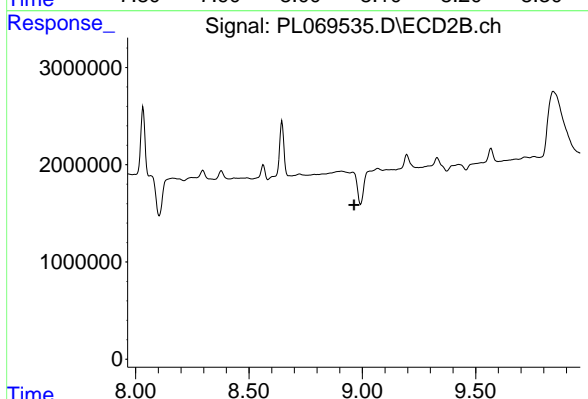
Instrument :
 ECD_L
 ClientSampleId :
 PB138601BL



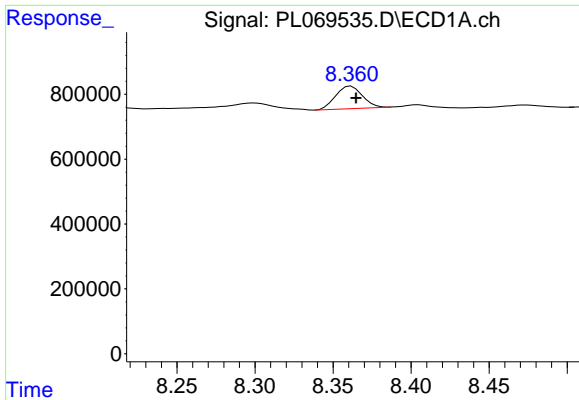
#13 Dieldrin
 R.T.: 0.000 min
 Exp R.T. : 8.725 min
 Response: 0
 Conc: N.D.



#14 Endrin
 R.T.: 8.074 min
 Delta R.T.: 0.020 min
 Response: 3007674
 Conc: 5.21 ng/ml

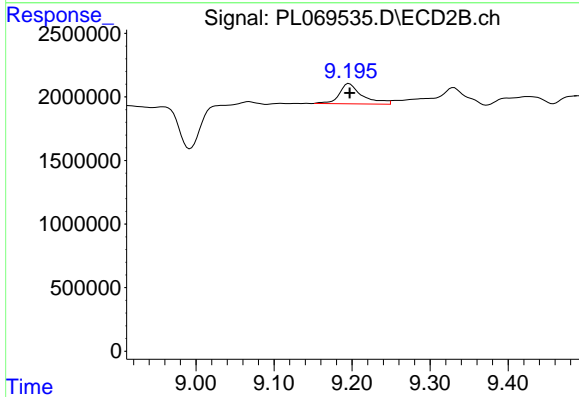


#14 Endrin
 R.T.: 0.000 min
 Exp R.T. : 8.964 min
 Response: 0
 Conc: N.D.

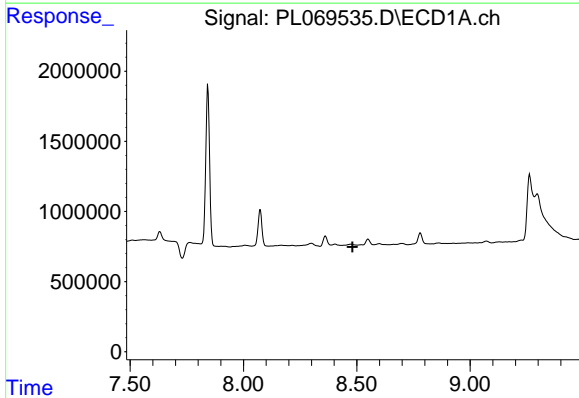


#15 Endosulfan II
 R.T.: 8.361 min
 Delta R.T.: -0.003 min
 Response: 823616
 Conc: 1.48 ng/ml

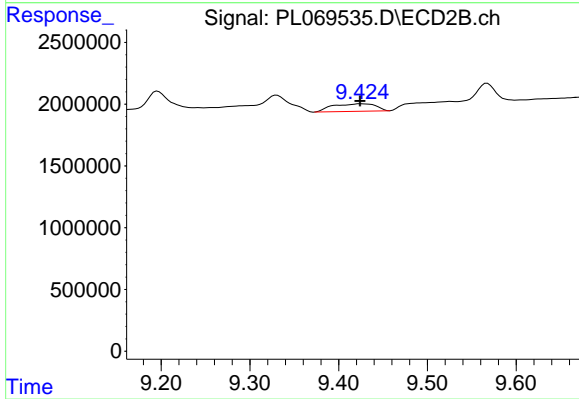
Instrument :
 ECD_L
 ClientSampleId :
 PB138601BL



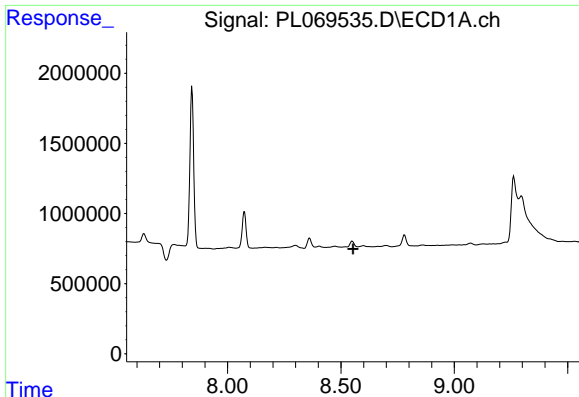
#15 Endosulfan II
 R.T.: 9.196 min
 Delta R.T.: 0.000 min
 Response: 3238631
 Conc: 2.74 ng/ml



#17 4,4'-DDT
 R.T.: 0.000 min
 Exp R.T. : 8.482 min
 Response: 0
 Conc: N.D.



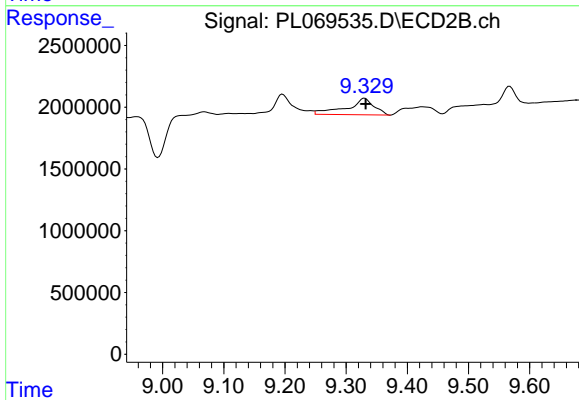
#17 4,4'-DDT
 R.T.: 9.425 min
 Delta R.T.: 0.001 min
 Response: 2061859
 Conc: 1.68 ng/ml



#18 Endrin aldehyde

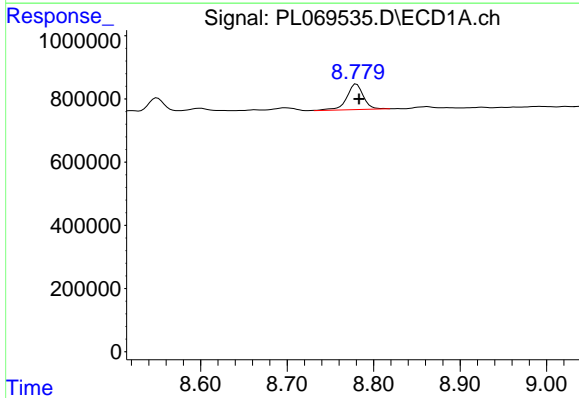
R.T.: 0.000 min
 Exp R.T.: 8.553 min
 Response: 0
 Conc: N.D.

Instrument :
 ECD_L
 ClientSampleId :
 PB138601BL



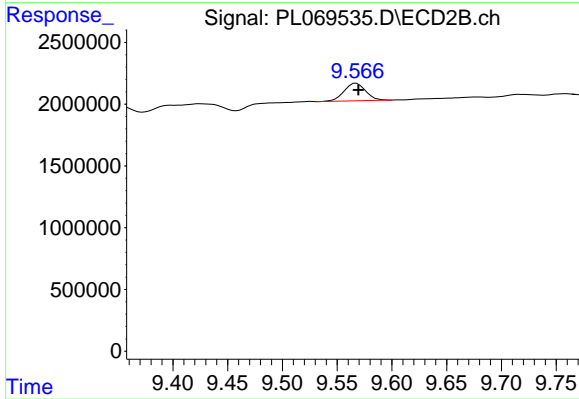
#18 Endrin aldehyde

R.T.: 9.330 min
 Delta R.T.: -0.002 min
 Response: 4149377
 Conc: 4.36 ng/ml



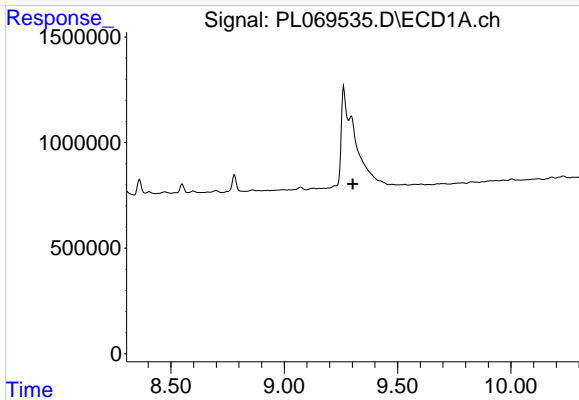
#19 Endosulfan Sulfate

R.T.: 8.780 min
 Delta R.T.: -0.003 min
 Response: 1089017
 Conc: 1.83 ng/ml



#19 Endosulfan Sulfate

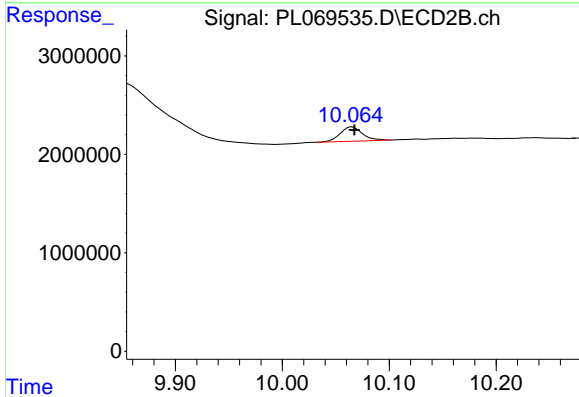
R.T.: 9.568 min
 Delta R.T.: -0.002 min
 Response: 1942618
 Conc: 1.71 ng/ml



#21 Endrin ketone

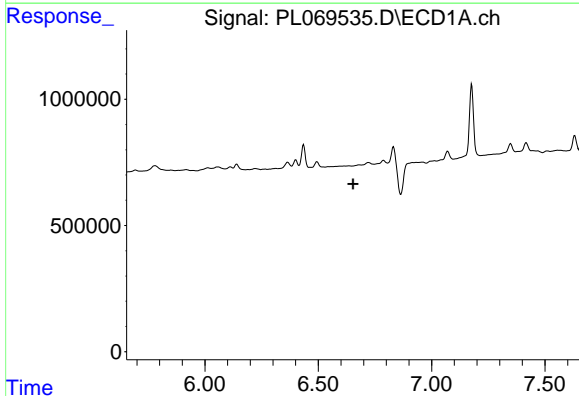
R.T.: 0.000 min
 Exp R.T. : 9.302 min
 Response: 0
 Conc: N.D.

Instrument :
 ECD_L
 ClientSampleId :
 PB138601BL



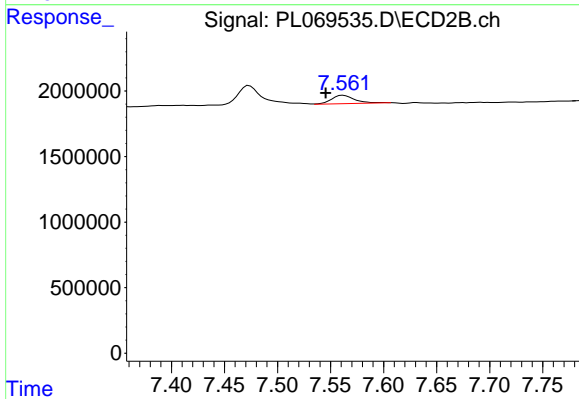
#21 Endrin ketone

R.T.: 10.065 min
 Delta R.T.: -0.002 min
 Response: 2111911
 Conc: 1.63 ng/ml



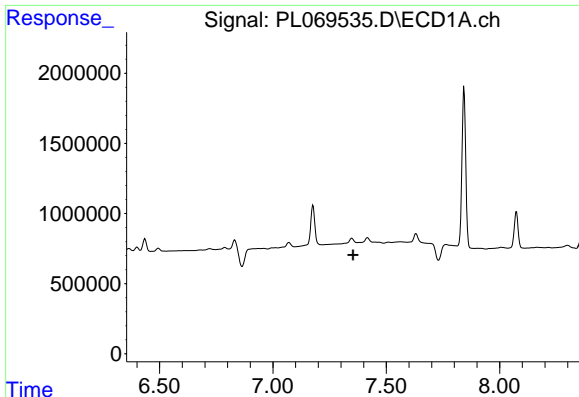
#24 Chlordane-2

R.T.: 0.000 min
 Exp R.T. : 6.653 min
 Response: 0
 Conc: N.D.



#24 Chlordane-2

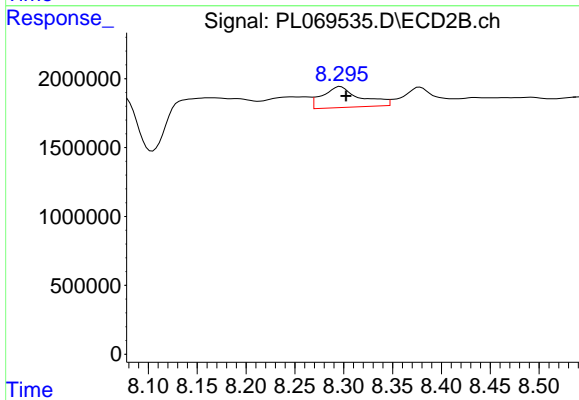
R.T.: 7.562 min
 Delta R.T.: 0.017 min
 Response: 1025977
 Conc: 17.91 ng/ml



#25 Chlordane-3

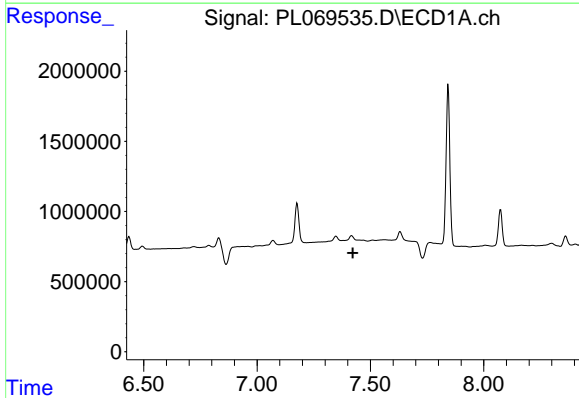
R.T.: 0.000 min
 Exp R.T. : 7.354 min
 Response: 0
 Conc: N.D.

Instrument :
 ECD_L
 ClientSampleId :
 PB138601BL



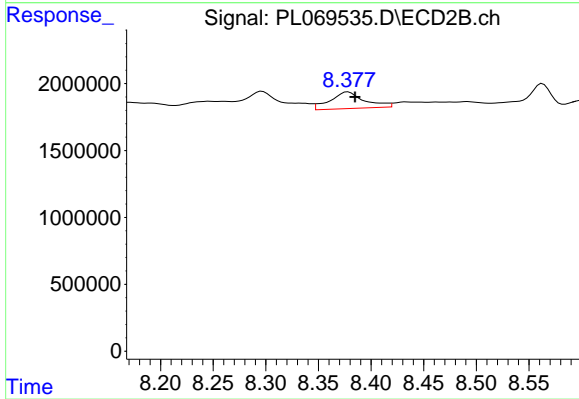
#25 Chlordane-3

R.T.: 8.297 min
 Delta R.T.: -0.006 min
 Response: 4101301
 Conc: 19.15 ng/ml



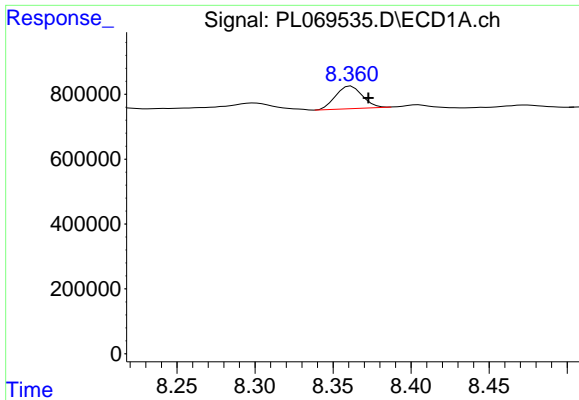
#26 Chlordane-4

R.T.: 0.000 min
 Exp R.T. : 7.423 min
 Response: 0
 Conc: N.D.



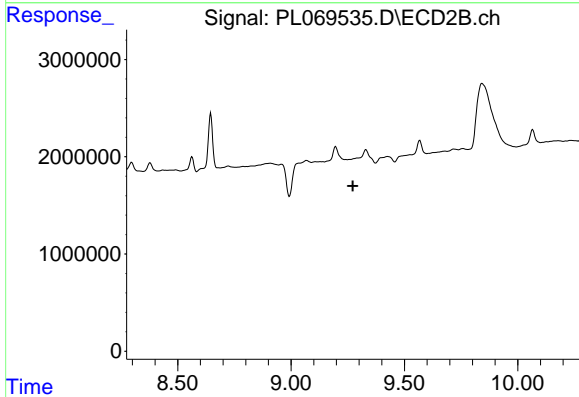
#26 Chlordane-4

R.T.: 8.378 min
 Delta R.T.: -0.007 min
 Response: 2799916
 Conc: 10.88 ng/ml

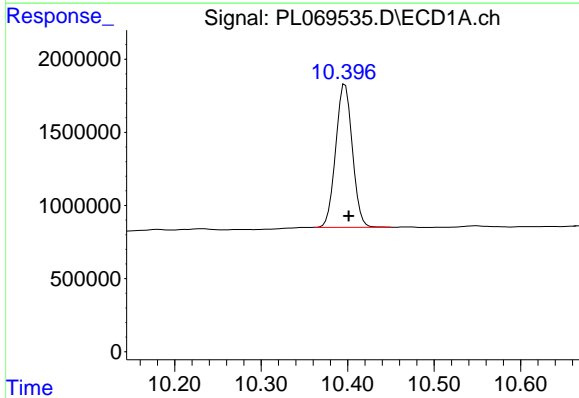


#27 Chlordane-5
 R.T.: 8.361 min
 Delta R.T.: -0.011 min
 Response: 823616
 Conc: 32.29 ng/ml

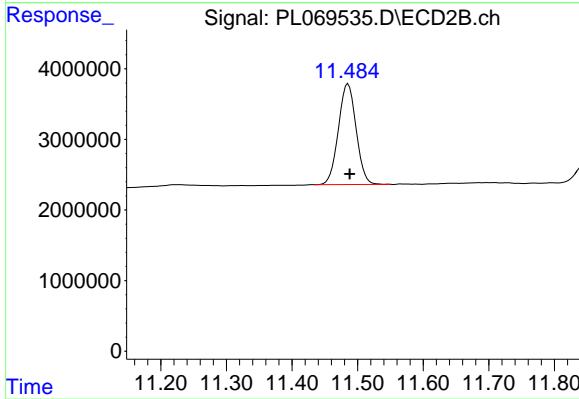
Instrument :
 ECD_L
 ClientSampleId :
 PB138601BL



#27 Chlordane-5
 R.T.: 0.000 min
 Exp R.T. : 9.273 min
 Response: 0
 Conc: N.D.



#28 Decachlorobiphenyl
 R.T.: 10.397 min
 Delta R.T.: -0.004 min
 Response: 13006481
 Conc: 19.27 ng/ml



#28 Decachlorobiphenyl
 R.T.: 11.485 min
 Delta R.T.: -0.003 min
 Response: 26795262
 Conc: 21.86 ng/ml