

Data Path : Z:\pestpcbsrv\HPCHEM1\ECD_L\Data\PL100620\
 Data File : PL062077.D
 Signal(s) : Signal #1: ECD1A.ch Signal #2: ECD2B.ch
 Acq On : 06 Oct 2020 17:57
 Operator : DD\AJ
 Sample : L4272-46
 Misc :
 ALS Vial : 25 Sample Multiplier: 1

Instrument :
 ECD_L
 ClientSampleId :
 SC-9-(3.5)

Integration File signal 1: autoint1.e
 Integration File signal 2: autoint2.e
 Quant Time: Oct 07 04:12:18 2020
 Quant Method : Z:\pestpcbsrv\HPCHEM1\ECD_L\methods\PL092320.M
 Quant Title : GC Extractables
 QLast Update : Wed Sep 23 13:58:40 2020
 Response via : Initial Calibration
 Integrator: ChemStation

Volume Inj. : 1 µl
 Signal #1 Phase : ZB-MR2 Signal #2 Phase: ZB-MR1
 Signal #1 Info : 30M x 0.32mm x0.2 Signal #2 Info : 30M x 0.32mm x0.5µm

Compound	RT#1	RT#2	Resp#1	Resp#2	ng/ml	ng/ml

System Monitoring Compounds						
1) SA Tetrachlo...	3.457	4.007	36872546	55743350	21.614	20.432
28) SA Decachlor...	8.208	9.095	31263758	44093159	19.218	20.030

Target Compounds

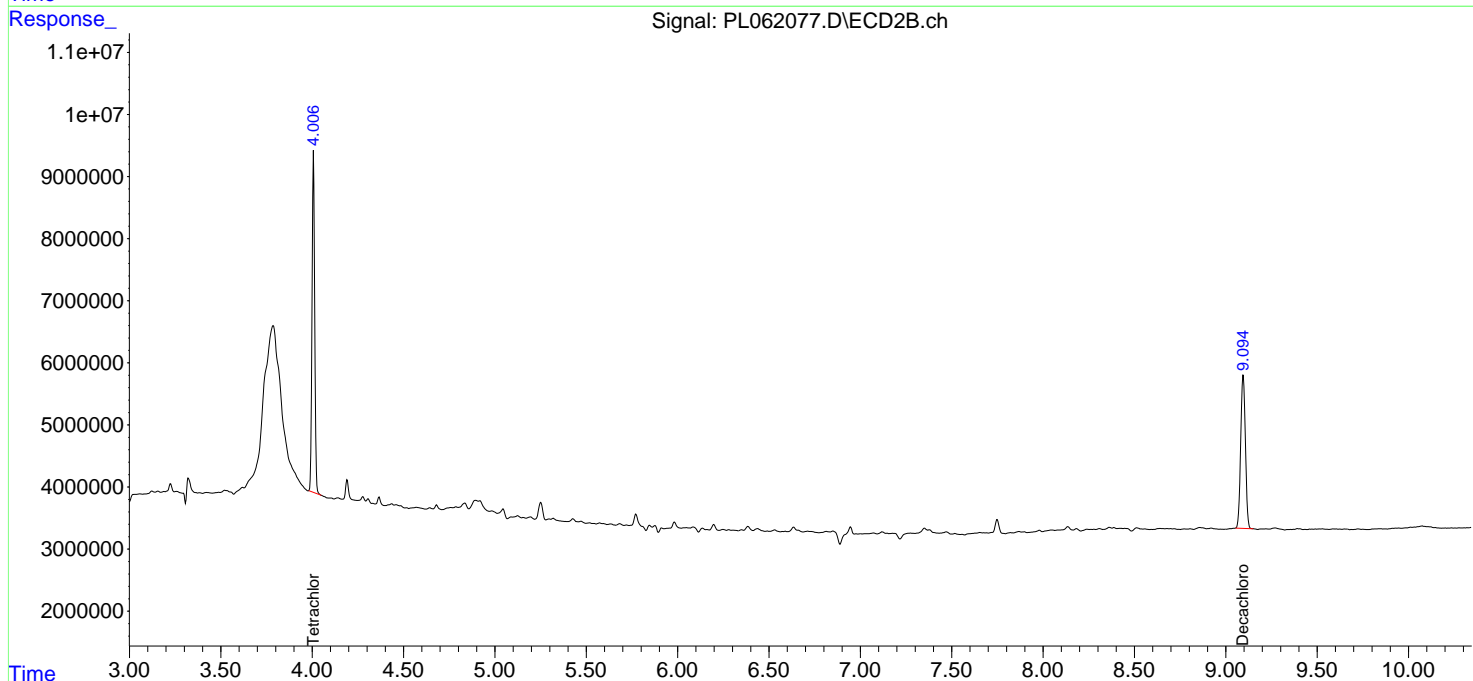
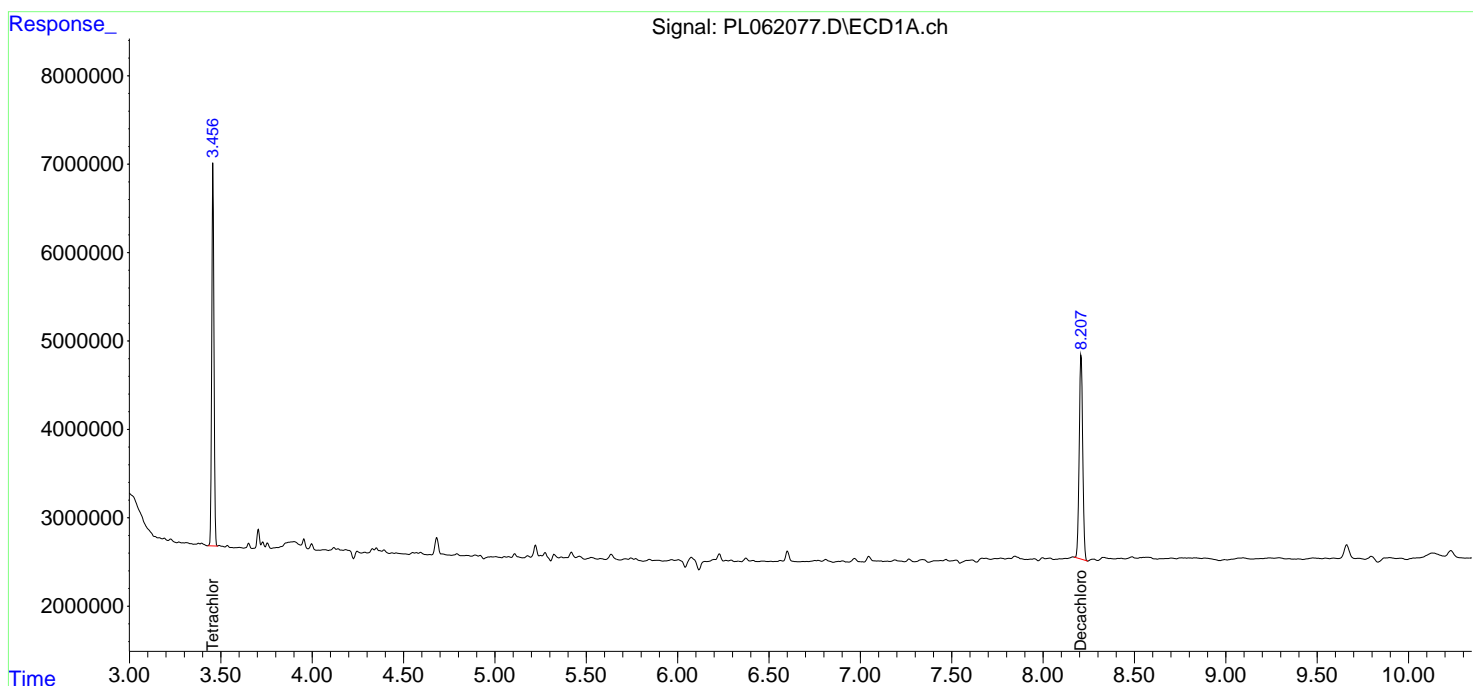
(f)=RT Delta > 1/2 Window (#)=Amounts differ by > 25% (m)=manual int.

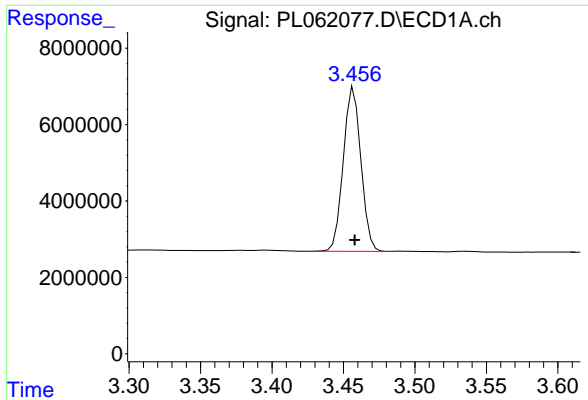
Data Path : Z:\pestpcbsrv\HPCHEM1\ECD_L\Data\PL100620\
 Data File : PL062077.D
 Signal(s) : Signal #1: ECD1A.ch Signal #2: ECD2B.ch
 Acq On : 06 Oct 2020 17:57
 Operator : DD\AJ
 Sample : L4272-46
 Misc :
 ALS Vial : 25 Sample Multiplier: 1

Instrument :
 ECD_L
 ClientSampleId :
 SC-9-(3.5)

Integration File signal 1: autoint1.e
 Integration File signal 2: autoint2.e
 Quant Time: Oct 07 04:12:18 2020
 Quant Method : Z:\pestpcbsrv\HPCHEM1\ECD_L\methods\PL092320.M
 Quant Title : GC Extractables
 QLast Update : Wed Sep 23 13:58:40 2020
 Response via : Initial Calibration
 Integrator: ChemStation

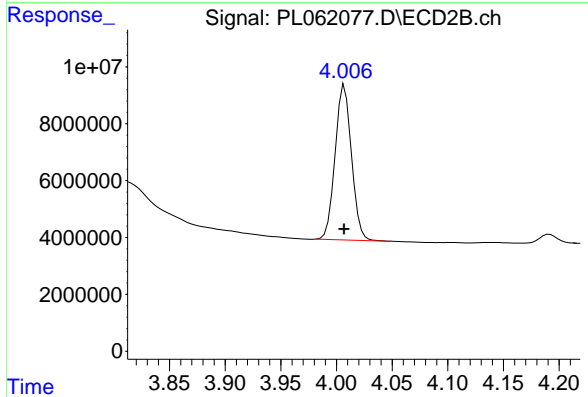
Volume Inj. : 1 µl
 Signal #1 Phase : ZB-MR2 Signal #2 Phase: ZB-MR1
 Signal #1 Info : 30M x 0.32mm x0.2 Signal #2 Info : 30M x 0.32mm x0.5µm



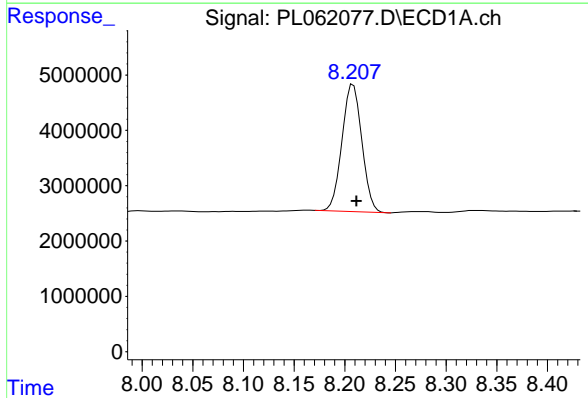


#1 Tetrachloro-m-xylene
 R.T.: 3.457 min
 Delta R.T.: 0.000 min
 Response: 36872546
 Conc: 21.61 ng/ml

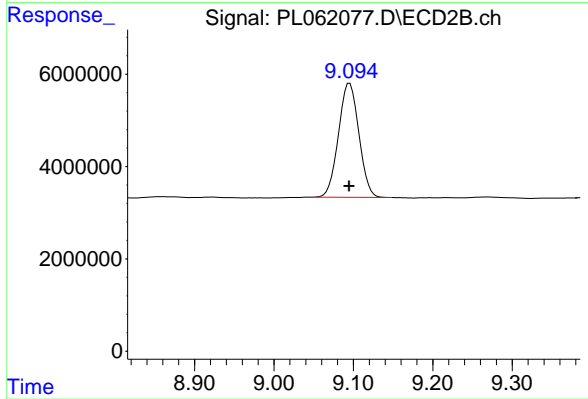
Instrument :
 ECD_L
 ClientSampleId :
 SC-9-(3.5)



#1 Tetrachloro-m-xylene
 R.T.: 4.007 min
 Delta R.T.: 0.000 min
 Response: 55743350
 Conc: 20.43 ng/ml



#28 Decachlorobiphenyl
 R.T.: 8.208 min
 Delta R.T.: -0.003 min
 Response: 31263758
 Conc: 19.22 ng/ml



#28 Decachlorobiphenyl
 R.T.: 9.095 min
 Delta R.T.: 0.000 min
 Response: 44093159
 Conc: 20.03 ng/ml