

Data Path : Z:\pestpcbsrv\HPCHEM1\ECD_L\Data\PL101322\
 Data File : PL078329.D
 Signal(s) : Signal #1: ECD1A.ch Signal #2: ECD2B.ch
 Acq On : 13 Oct 2022 14:34
 Operator : AR\AJ
 Sample : PB148307BS
 Misc :
 ALS Vial : 20 Sample Multiplier: 1

Instrument :
 ECD_L
 ClientSampleId :

Integration File signal 1: autoint1.e
 Integration File signal 2: autoint2.e
 Quant Time: Oct 13 23:29:35 2022
 Quant Method : Z:\pestpcbsrv\HPCHEM1\ECD_L\methods\PL101222.M
 Quant Title : GC Extractables
 QLast Update : Wed Oct 12 15:30:54 2022
 Response via : Initial Calibration
 Integrator: ChemStation

Volume Inj. : 1 µl
 Signal #1 Phase : ZB-MR2 Signal #2 Phase: ZB-MR1
 Signal #1 Info : 30M x 0.32mm x0.2 Signal #2 Info : 30M x 0.32mm x0.5µm

	Compound	RT#1	RT#2	Resp#1	Resp#2	ng/ml	ng/ml

System Monitoring Compounds							
1)	SA Tetrachlo...	3.413	2.620	32819780	51695389	19.859	19.557
28)	SA Decachlor...	8.903	7.717	31954278	45560678	20.698	20.959
Target Compounds							
2)	A alpha-BHC	3.878	3.112	116.5E6	194.6E6	46.342	46.761
3)	MA gamma-BHC...	4.213	3.436	106.7E6	174.2E6	45.771	49.983
4)	MA Heptachlor	4.789	3.767	104.1E6	168.6E6	46.846	47.222
5)	MB Aldrin	5.129	4.041	99981358	170.3E6	47.738	50.068
6)	B beta-BHC	4.427	3.736	44669763	67420321	44.912	45.731
7)	B delta-BHC	4.670	3.959	94330838	176.6E6	51.327	47.769
8)	Heptachlo...	5.562	4.539	88278512	147.5E6	57.983	50.057
9)	A Endosulfan I	5.949	4.905	79595712	136.0E6	47.414	49.313
10)	B gamma-Chl...	5.818	4.789	87955750	147.9E6	49.363	49.416
11)	B alpha-Chl...	5.896	4.851	86647250	143.9E6	48.386	49.956
12)	B 4,4'-DDE	6.075	5.045	82727363	143.4E6	49.086	50.161
13)	MA Dieldrin	6.226	5.169	83902537	153.3E6	48.766	52.314
14)	MA Endrin	6.458	5.441	71484401	139.0E6	47.906	60.342 #
15)	B Endosulfa...	6.687	5.737	72183467	124.9E6	53.845	51.006
16)	A 4,4'-DDD	6.600	5.598	61843532	115.5E6	50.225	51.838
17)	MA 4,4'-DDT	6.911	5.847	64644642	112.8E6	44.158	49.690
18)	B Endrin al...	6.818	5.917	59591523	98953125	52.073	53.478
19)	B Endosulfa...	7.052	6.140	67130182	118.5E6	47.065	49.209
20)	A Methoxychlor	7.392	6.424	34571488	59884164	45.626	47.414
21)	B Endrin ke...	7.540	6.639	73043820	126.0E6	46.820	47.542
22)	Mirex	7.999	6.814	55891662	93557413	47.320	48.631
24)	Chlordane-2	5.129f	0.000	99981358	0	1419.514	N.D. #
25)	Chlordane-3	5.818	4.789	87955750	147.9E6	338.318	483.473 #
26)	Chlordane-4	5.896	4.851	86647250	143.9E6	271.304	445.485 #

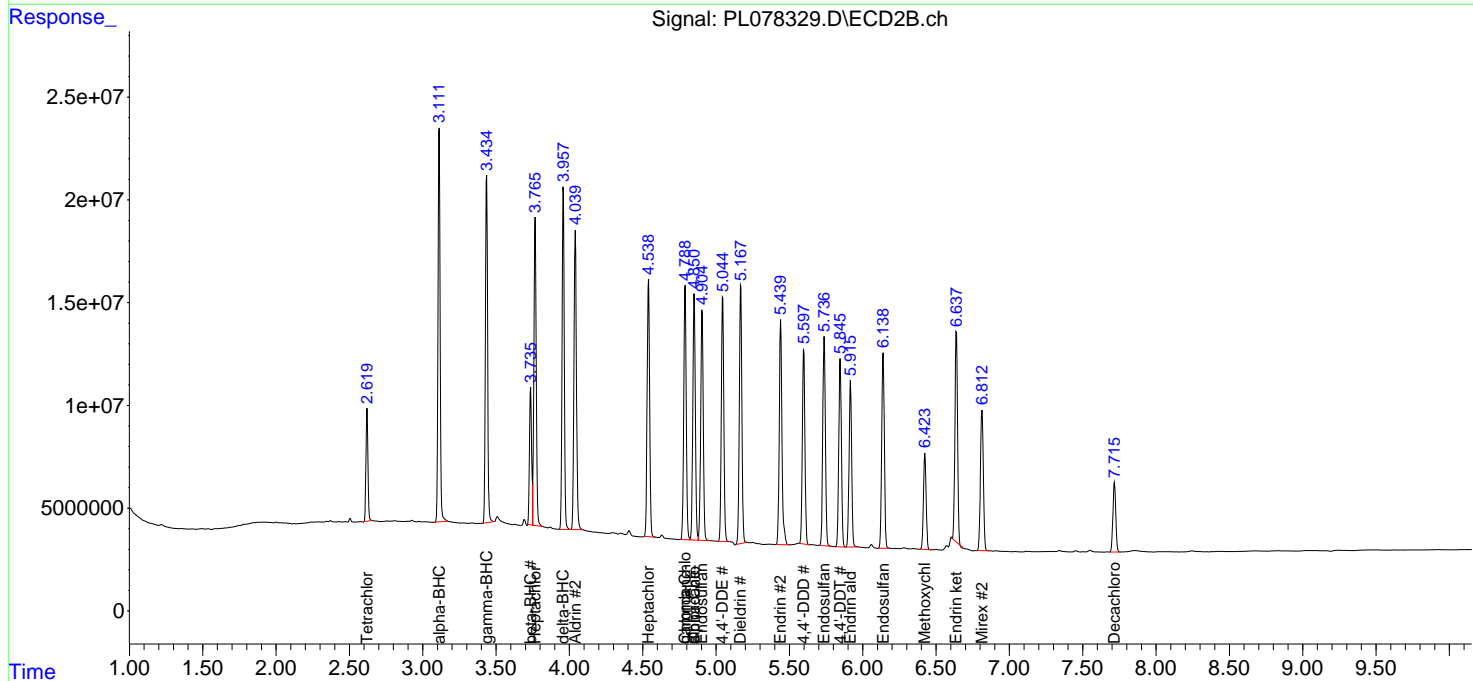
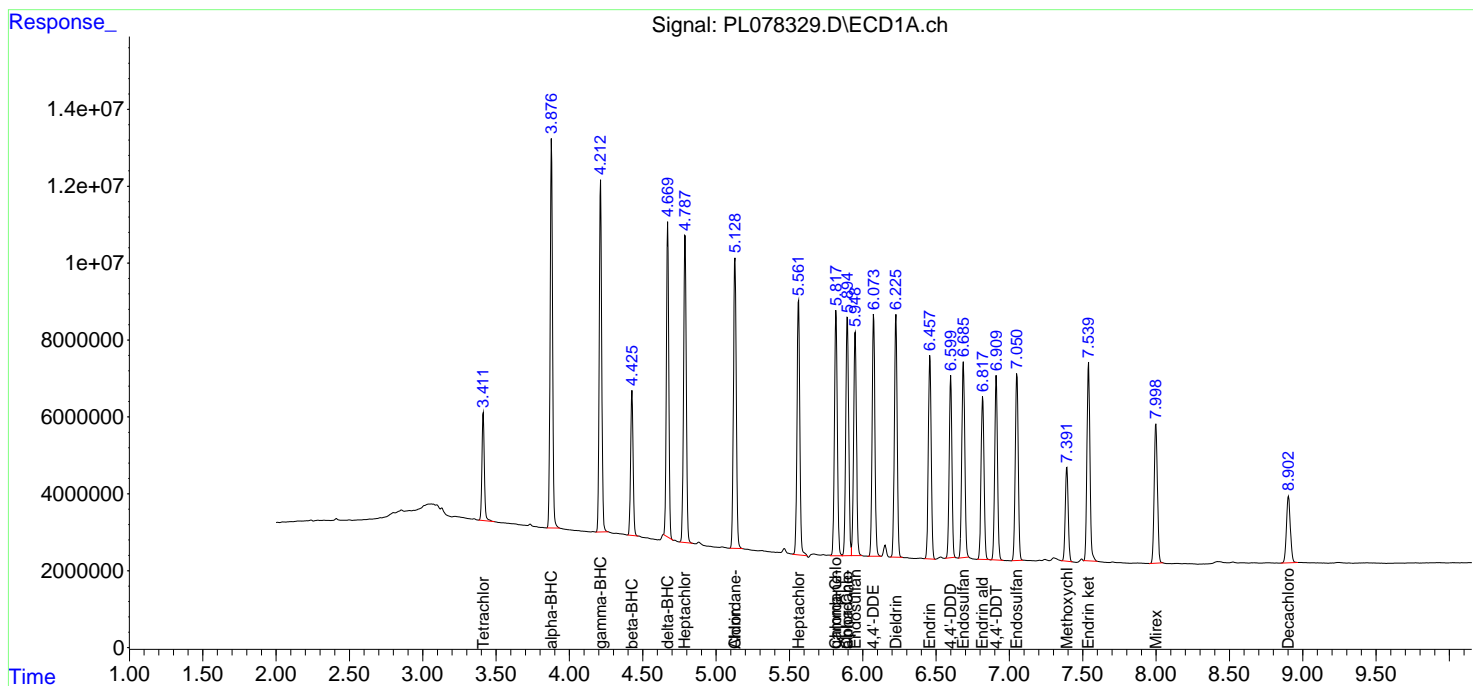
(f)=RT Delta > 1/2 Window (#)=Amounts differ by > 25% (m)=manual int.

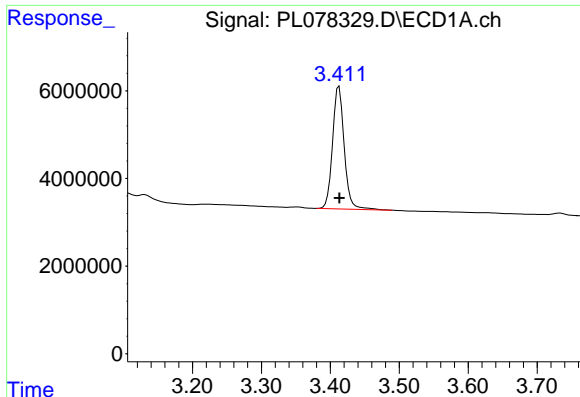
Data Path : Z:\pestpcbsrv\HPCHEM1\ECD_L\Data\PL101322\
 Data File : PL078329.D
 Signal(s) : Signal #1: ECD1A.ch Signal #2: ECD2B.ch
 Acq On : 13 Oct 2022 14:34
 Operator : AR\AJ
 Sample : PB148307BS
 Misc :
 ALS Vial : 20 Sample Multiplier: 1

Instrument :
 ECD_L
 ClientSampleId :

Integration File signal 1: autoint1.e
 Integration File signal 2: autoint2.e
 Quant Time: Oct 13 23:29:35 2022
 Quant Method : Z:\pestpcbsrv\HPCHEM1\ECD_L\methods\PL101222.M
 Quant Title : GC Extractables
 QLast Update : Wed Oct 12 15:30:54 2022
 Response via : Initial Calibration
 Integrator: ChemStation

Volume Inj. : 1 µl
 Signal #1 Phase : ZB-MR2 Signal #2 Phase: ZB-MR1
 Signal #1 Info : 30M x 0.32mm x0.2 Signal #2 Info : 30M x 0.32mm x0.5µm

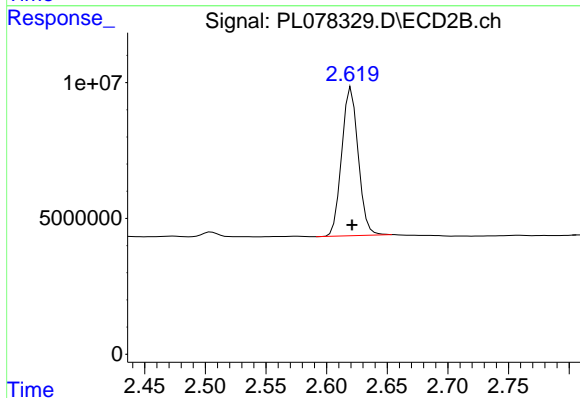




#1 Tetrachloro-m-xylene

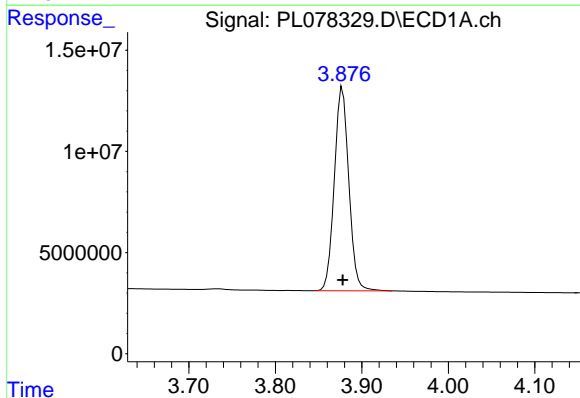
R.T.: 3.413 min
 Delta R.T.: 0.000 min
 Response: 32819780
 Conc: 19.86 ng/ml

Instrument :
 ECD_L
 ClientSampleId :



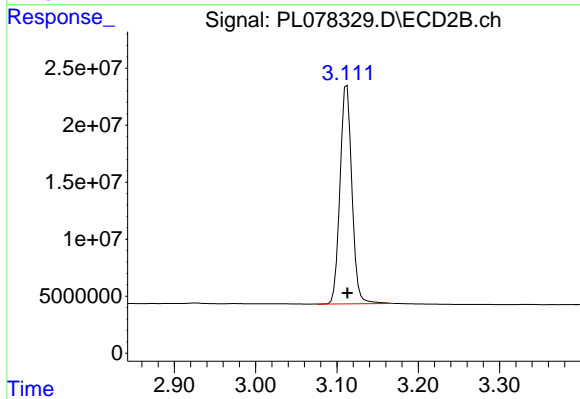
#1 Tetrachloro-m-xylene

R.T.: 2.620 min
 Delta R.T.: 0.000 min
 Response: 51695389
 Conc: 19.56 ng/ml



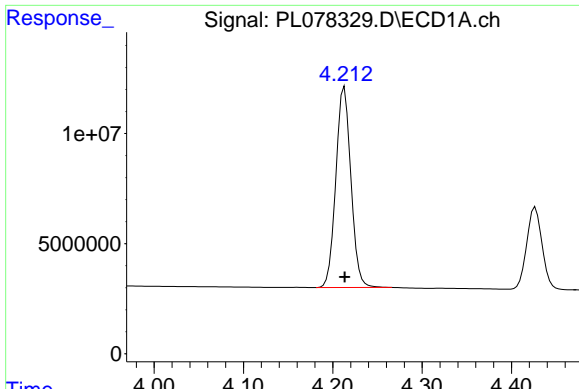
#2 alpha-BHC

R.T.: 3.878 min
 Delta R.T.: 0.000 min
 Response: 116537231
 Conc: 46.34 ng/ml



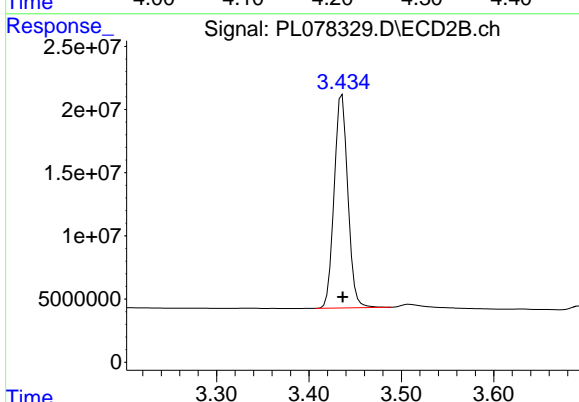
#2 alpha-BHC

R.T.: 3.112 min
 Delta R.T.: 0.000 min
 Response: 194632494
 Conc: 46.76 ng/ml

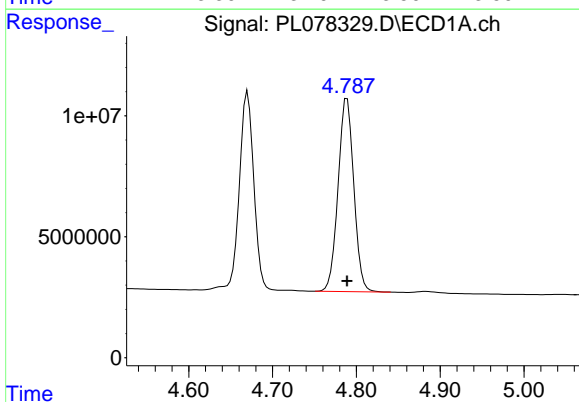


#3 gamma-BHC (Lindane)
 R.T.: 4.213 min
 Delta R.T.: 0.000 min
 Response: 106738653
 Conc: 45.77 ng/ml

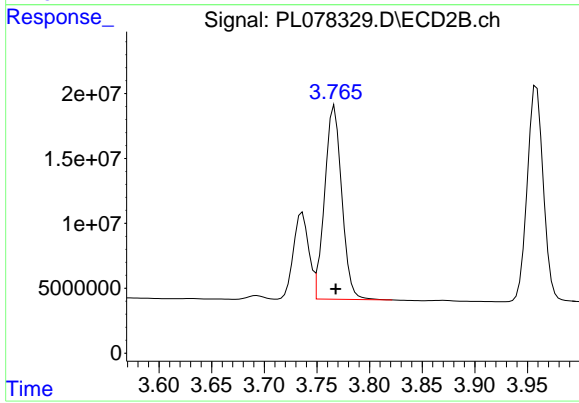
Instrument :
 ECD_L
 ClientSampleId :



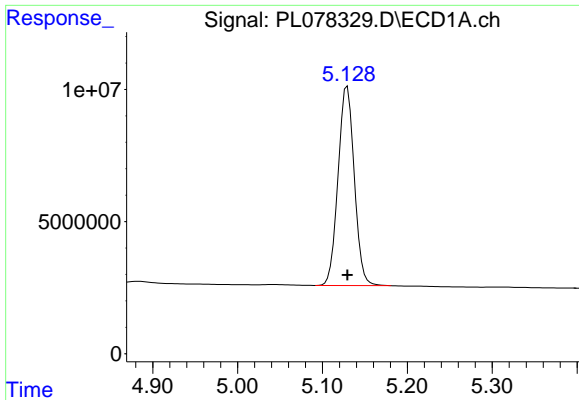
#3 gamma-BHC (Lindane)
 R.T.: 3.436 min
 Delta R.T.: 0.000 min
 Response: 174167542
 Conc: 49.98 ng/ml



#4 Heptachlor
 R.T.: 4.789 min
 Delta R.T.: 0.000 min
 Response: 104129140
 Conc: 46.85 ng/ml



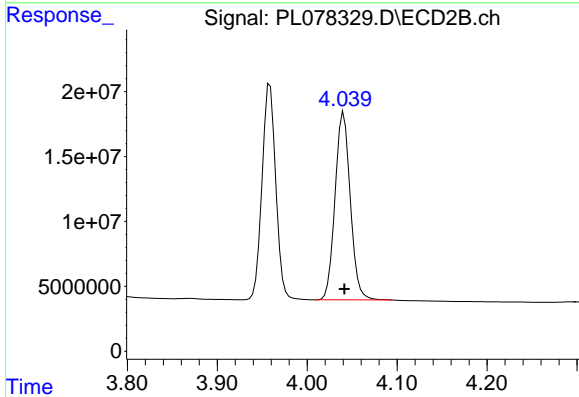
#4 Heptachlor
 R.T.: 3.767 min
 Delta R.T.: -0.001 min
 Response: 168649067
 Conc: 47.22 ng/ml



#5 Aldrin

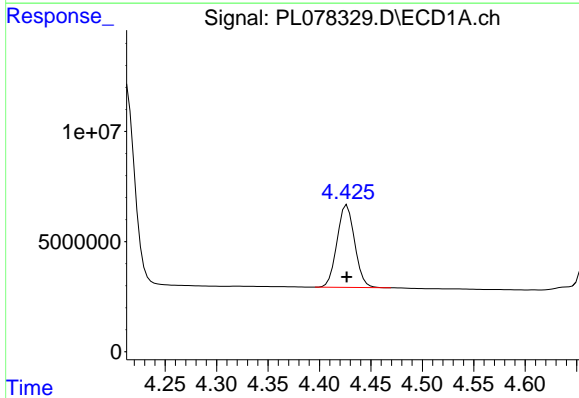
R.T.: 5.129 min
 Delta R.T.: 0.000 min
 Response: 99981358
 Conc: 47.74 ng/ml

Instrument :
 ECD_L
 ClientSampleId :



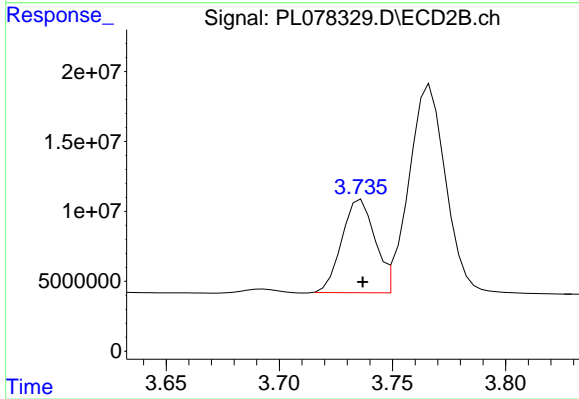
#5 Aldrin

R.T.: 4.041 min
 Delta R.T.: 0.000 min
 Response: 170328462
 Conc: 50.07 ng/ml



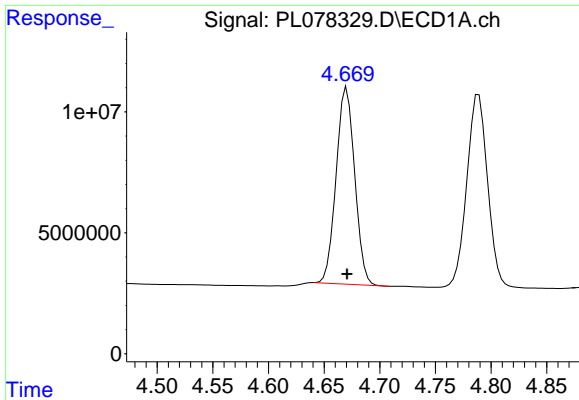
#6 beta-BHC

R.T.: 4.427 min
 Delta R.T.: 0.000 min
 Response: 44669763
 Conc: 44.91 ng/ml



#6 beta-BHC

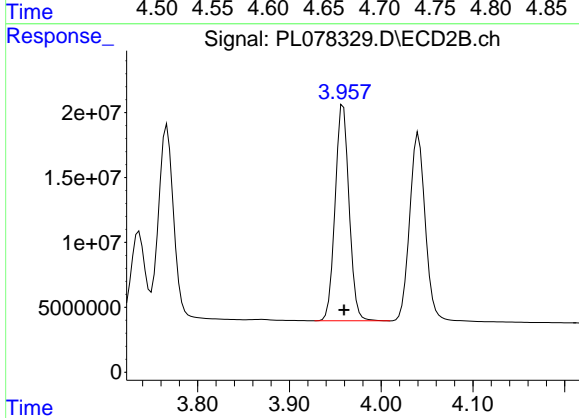
R.T.: 3.736 min
 Delta R.T.: 0.000 min
 Response: 67420321
 Conc: 45.73 ng/ml



#7 delta-BHC

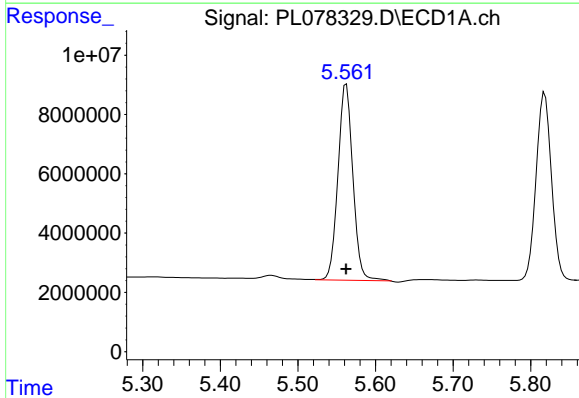
R.T.: 4.670 min
 Delta R.T.: 0.000 min
 Response: 94330838
 Conc: 51.33 ng/ml

Instrument :
 ECD_L
 ClientSampleId :



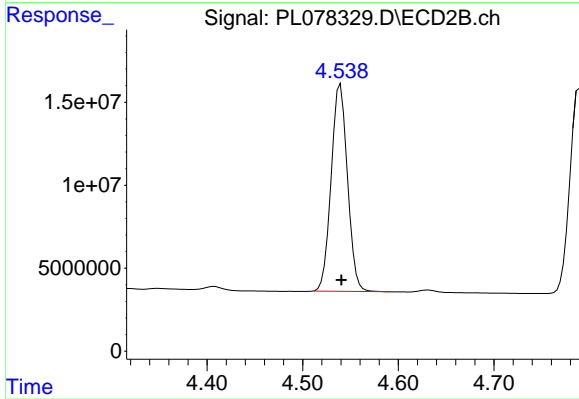
#7 delta-BHC

R.T.: 3.959 min
 Delta R.T.: 0.000 min
 Response: 176581096
 Conc: 47.77 ng/ml



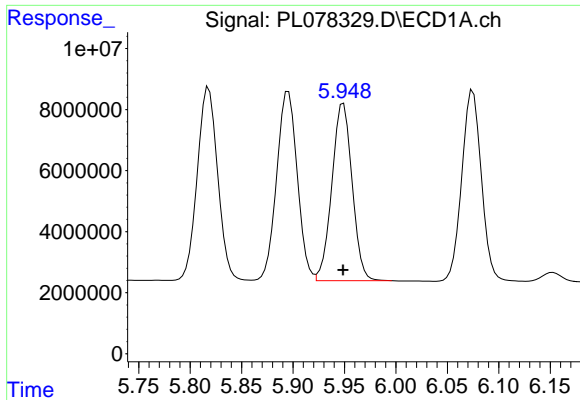
#8 Heptachlor epoxide

R.T.: 5.562 min
 Delta R.T.: 0.000 min
 Response: 88278512
 Conc: 57.98 ng/ml



#8 Heptachlor epoxide

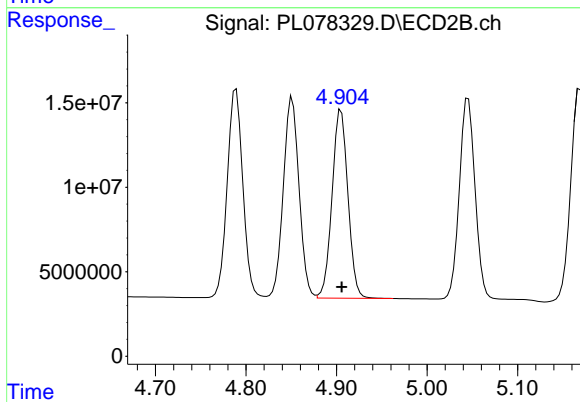
R.T.: 4.539 min
 Delta R.T.: 0.000 min
 Response: 147499585
 Conc: 50.06 ng/ml



#9 Endosulfan I

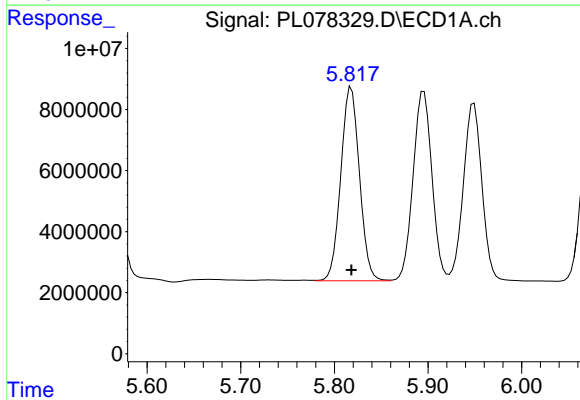
R.T.: 5.949 min
 Delta R.T.: 0.000 min
 Response: 79595712
 Conc: 47.41 ng/ml

Instrument :
 ECD_L
 ClientSampleId :



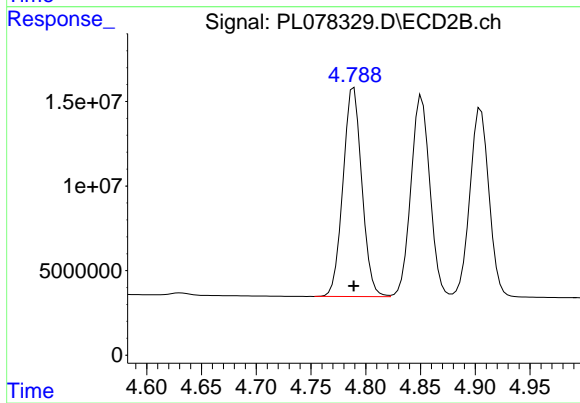
#9 Endosulfan I

R.T.: 4.905 min
 Delta R.T.: 0.000 min
 Response: 136010935
 Conc: 49.31 ng/ml



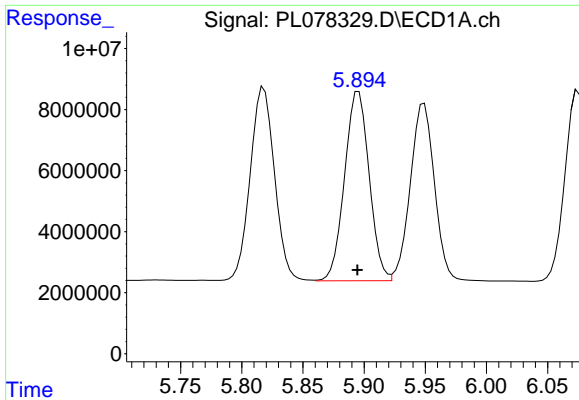
#10 gamma-Chlordane

R.T.: 5.818 min
 Delta R.T.: 0.000 min
 Response: 87955750
 Conc: 49.36 ng/ml



#10 gamma-Chlordane

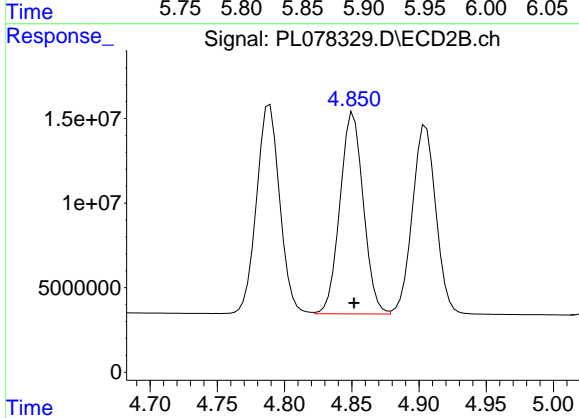
R.T.: 4.789 min
 Delta R.T.: 0.000 min
 Response: 147922730
 Conc: 49.42 ng/ml



#11 alpha-Chlordane

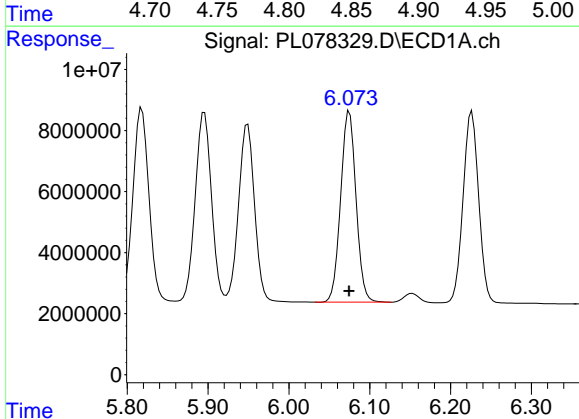
R.T.: 5.896 min
 Delta R.T.: 0.000 min
 Response: 86647250
 Conc: 48.39 ng/ml

Instrument :
 ECD_L
 ClientSampleId :



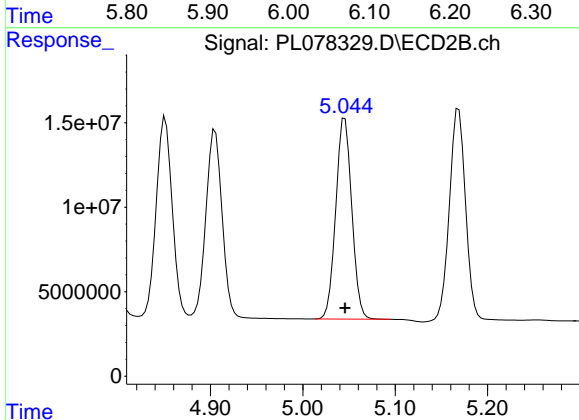
#11 alpha-Chlordane

R.T.: 4.851 min
 Delta R.T.: 0.000 min
 Response: 143854275
 Conc: 49.96 ng/ml



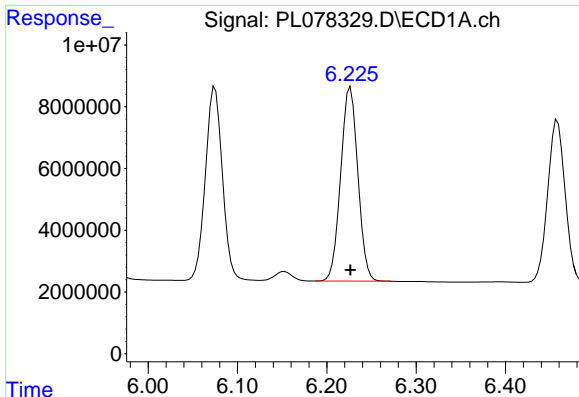
#12 4,4'-DDE

R.T.: 6.075 min
 Delta R.T.: 0.000 min
 Response: 82727363
 Conc: 49.09 ng/ml



#12 4,4'-DDE

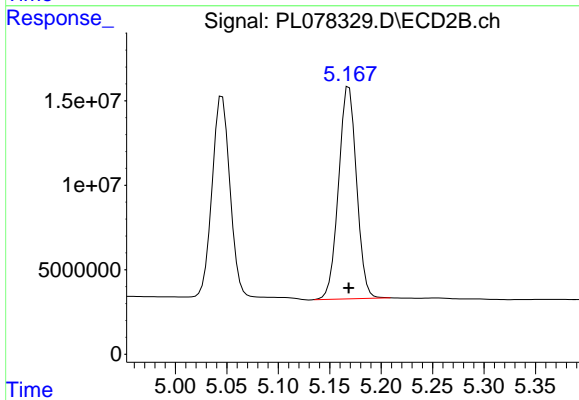
R.T.: 5.045 min
 Delta R.T.: 0.000 min
 Response: 143397585
 Conc: 50.16 ng/ml



#13 Dieldrin

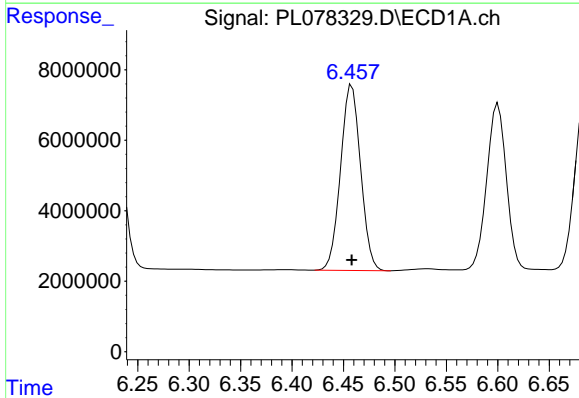
R.T.: 6.226 min
 Delta R.T.: 0.000 min
 Response: 83902537
 Conc: 48.77 ng/ml

Instrument :
 ECD_L
 ClientSampleId :



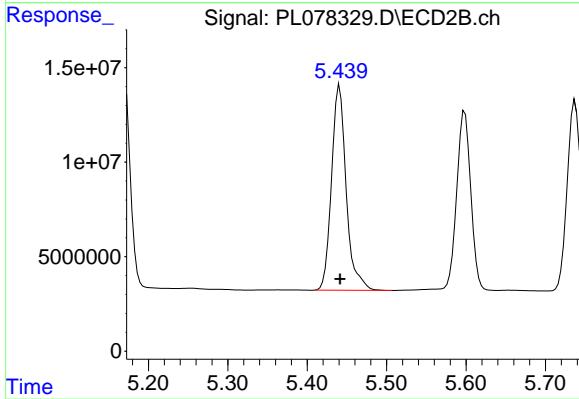
#13 Dieldrin

R.T.: 5.169 min
 Delta R.T.: 0.000 min
 Response: 153289325
 Conc: 52.31 ng/ml



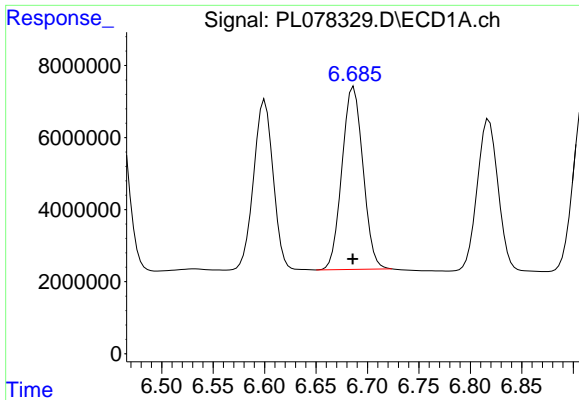
#14 Endrin

R.T.: 6.458 min
 Delta R.T.: 0.000 min
 Response: 71484401
 Conc: 47.91 ng/ml



#14 Endrin

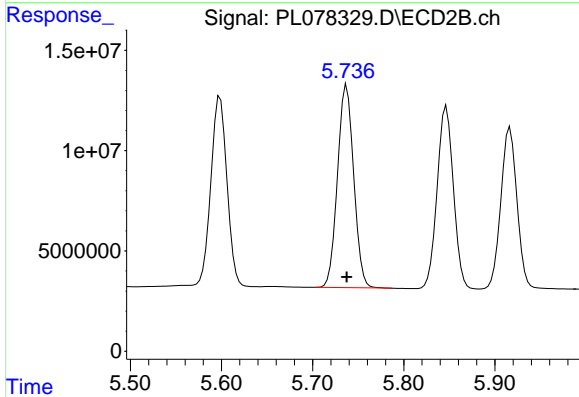
R.T.: 5.441 min
 Delta R.T.: 0.000 min
 Response: 138990902
 Conc: 60.34 ng/ml



#15 Endosulfan II

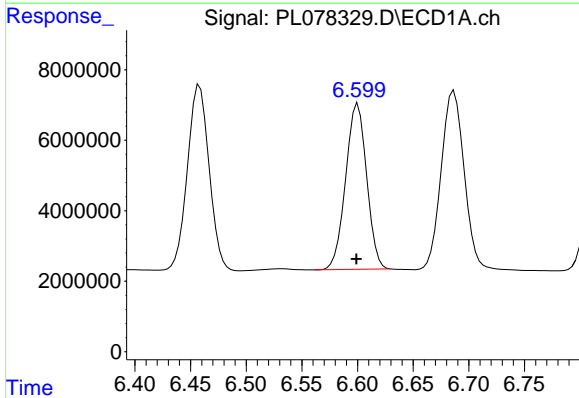
R.T.: 6.687 min
 Delta R.T.: 0.000 min
 Response: 72183467
 Conc: 53.85 ng/ml

Instrument :
 ECD_L
 ClientSampleId :



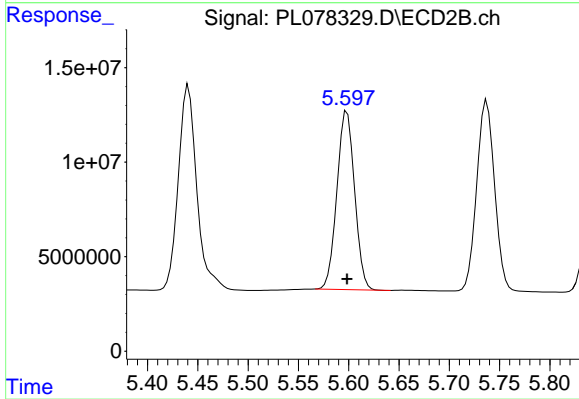
#15 Endosulfan II

R.T.: 5.737 min
 Delta R.T.: 0.000 min
 Response: 124864132
 Conc: 51.01 ng/ml



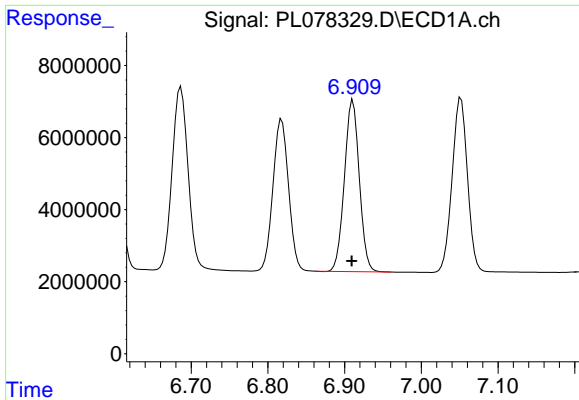
#16 4,4'-DDD

R.T.: 6.600 min
 Delta R.T.: 0.001 min
 Response: 61843532
 Conc: 50.23 ng/ml



#16 4,4'-DDD

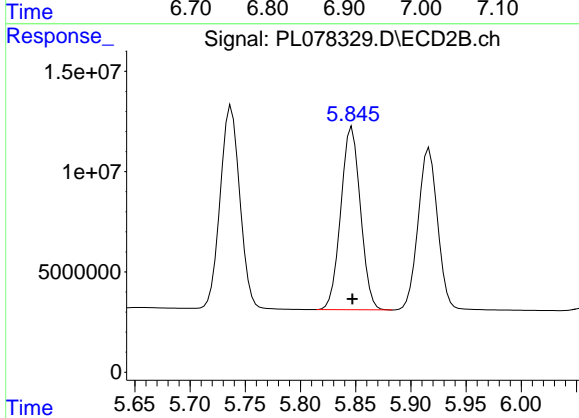
R.T.: 5.598 min
 Delta R.T.: 0.000 min
 Response: 115465694
 Conc: 51.84 ng/ml



#17 4,4'-DDT

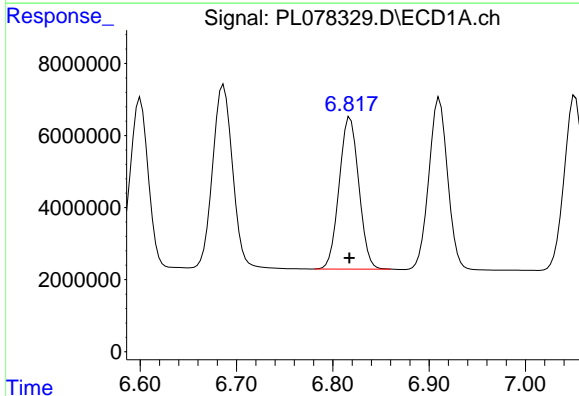
R.T.: 6.911 min
 Delta R.T.: 0.001 min
 Response: 64644642
 Conc: 44.16 ng/ml

Instrument :
 ECD_L
 ClientSampleId :



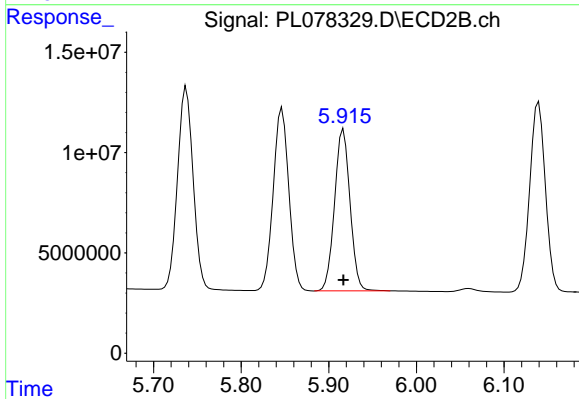
#17 4,4'-DDT

R.T.: 5.847 min
 Delta R.T.: 0.000 min
 Response: 112792267
 Conc: 49.69 ng/ml



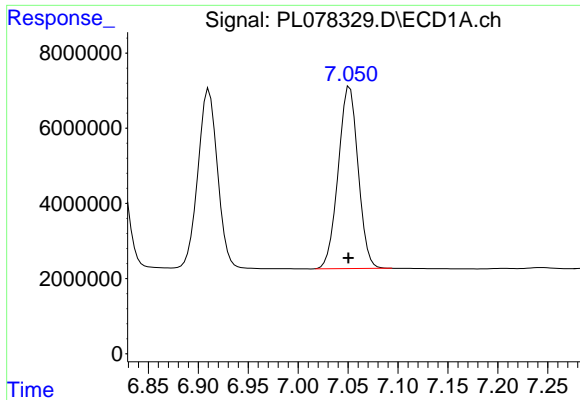
#18 Endrin aldehyde

R.T.: 6.818 min
 Delta R.T.: 0.000 min
 Response: 59591523
 Conc: 52.07 ng/ml



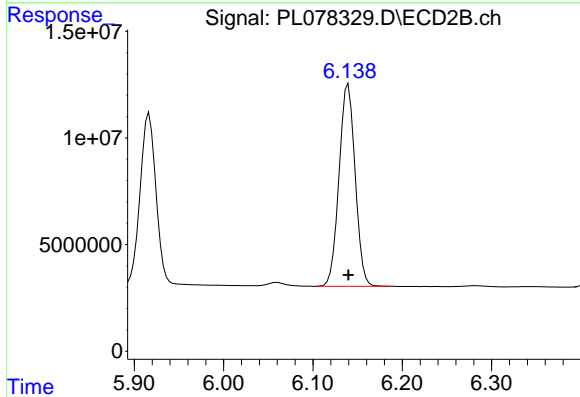
#18 Endrin aldehyde

R.T.: 5.917 min
 Delta R.T.: 0.000 min
 Response: 98953125
 Conc: 53.48 ng/ml

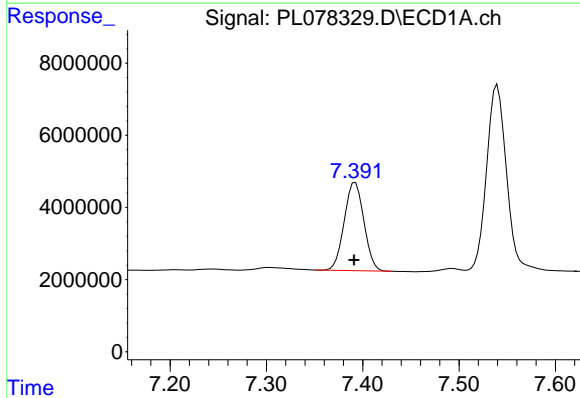


#19 Endosulfan Sulfate
 R.T.: 7.052 min
 Delta R.T.: 0.001 min
 Response: 67130182
 Conc: 47.06 ng/ml

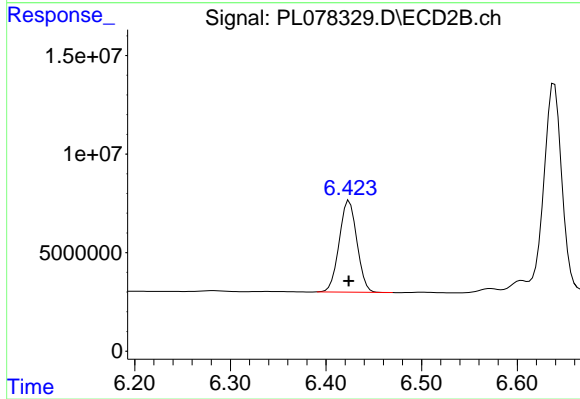
Instrument :
 ECD_L
 ClientSampleId :



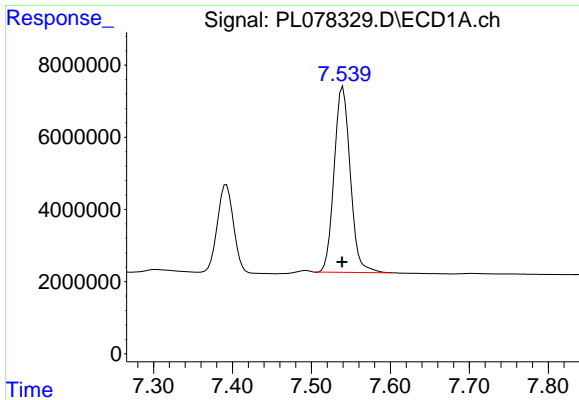
#19 Endosulfan Sulfate
 R.T.: 6.140 min
 Delta R.T.: 0.000 min
 Response: 118455975
 Conc: 49.21 ng/ml



#20 Methoxychlor
 R.T.: 7.392 min
 Delta R.T.: 0.001 min
 Response: 34571488
 Conc: 45.63 ng/ml



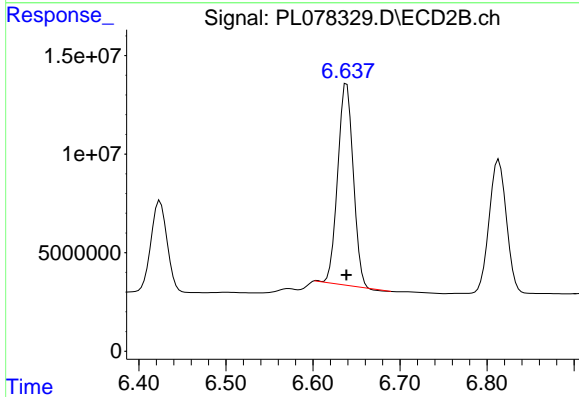
#20 Methoxychlor
 R.T.: 6.424 min
 Delta R.T.: 0.000 min
 Response: 59884164
 Conc: 47.41 ng/ml



#21 Endrin ketone

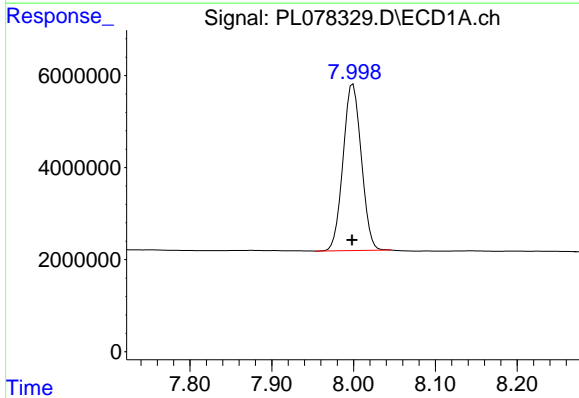
R.T.: 7.540 min
 Delta R.T.: 0.000 min
 Response: 73043820
 Conc: 46.82 ng/ml

Instrument :
 ECD_L
 ClientSampleId :



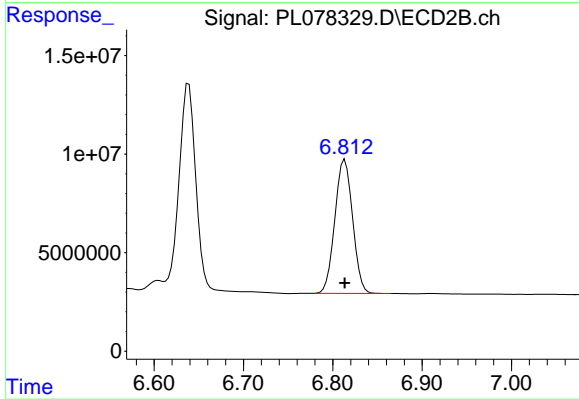
#21 Endrin ketone

R.T.: 6.639 min
 Delta R.T.: 0.000 min
 Response: 125956911
 Conc: 47.54 ng/ml



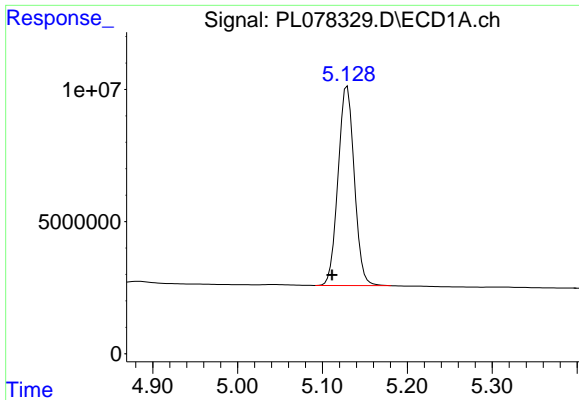
#22 Mirex

R.T.: 7.999 min
 Delta R.T.: 0.000 min
 Response: 55891662
 Conc: 47.32 ng/ml



#22 Mirex

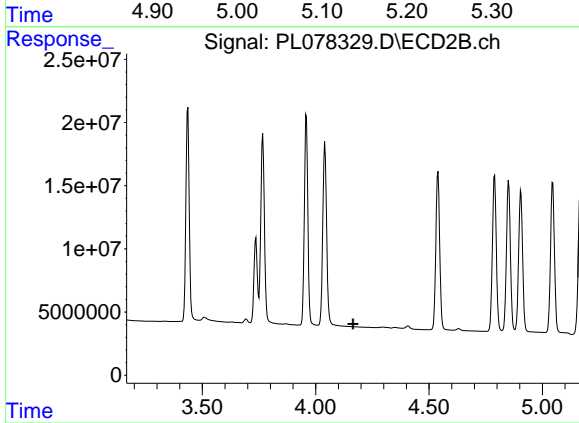
R.T.: 6.814 min
 Delta R.T.: 0.000 min
 Response: 93557413
 Conc: 48.63 ng/ml



#24 Chlordane-2

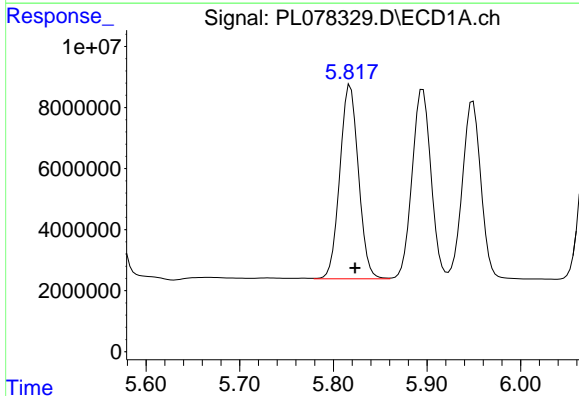
R.T.: 5.129 min
 Delta R.T.: 0.018 min
 Response: 99981358
 Conc: 1419.51 ng/m

Instrument :
 ECD_L
 ClientSampleId :



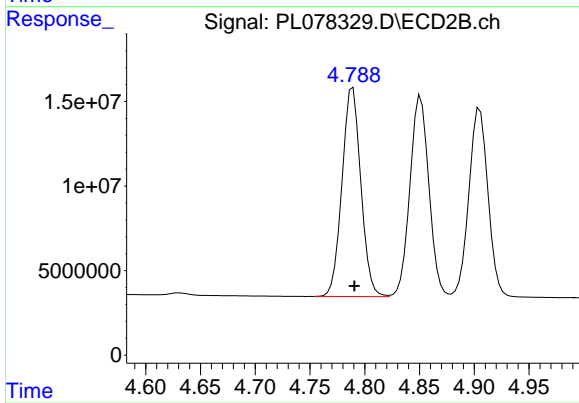
#24 Chlordane-2

R.T.: 0.000 min
 Exp R.T. : 4.165 min
 Response: 0
 Conc: N.D.



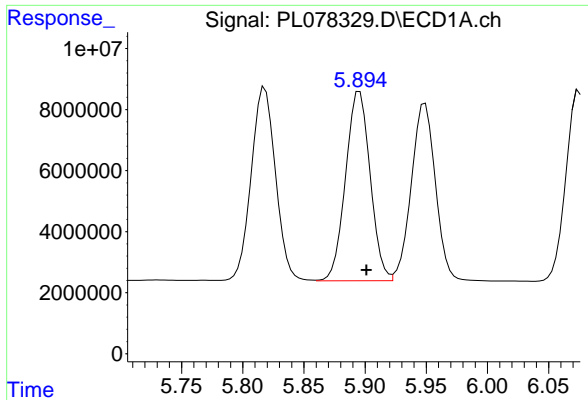
#25 Chlordane-3

R.T.: 5.818 min
 Delta R.T.: -0.005 min
 Response: 87955750
 Conc: 338.32 ng/ml



#25 Chlordane-3

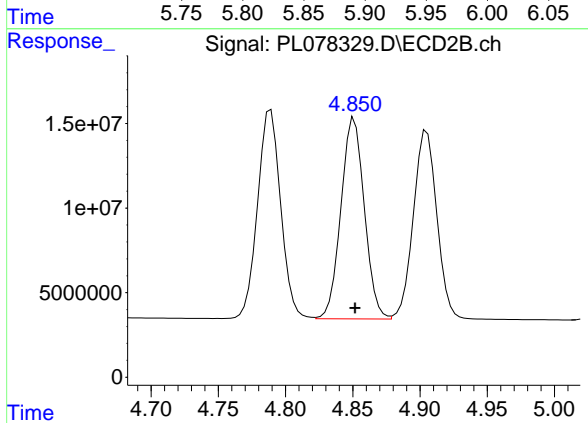
R.T.: 4.789 min
 Delta R.T.: -0.002 min
 Response: 147922730
 Conc: 483.47 ng/ml



#26 Chlordane-4

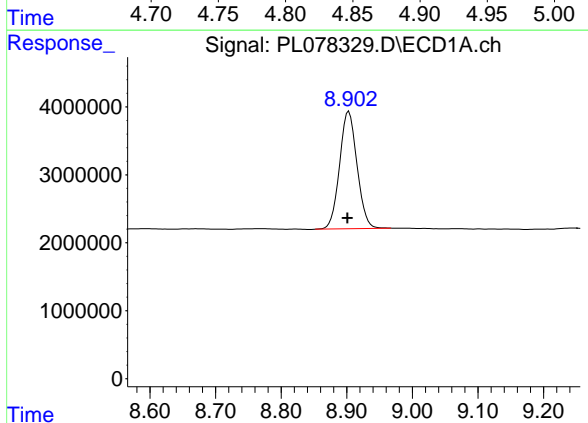
R.T.: 5.896 min
 Delta R.T.: -0.006 min
 Response: 86647250
 Conc: 271.30 ng/ml

Instrument :
 ECD_L
 ClientSampleId :



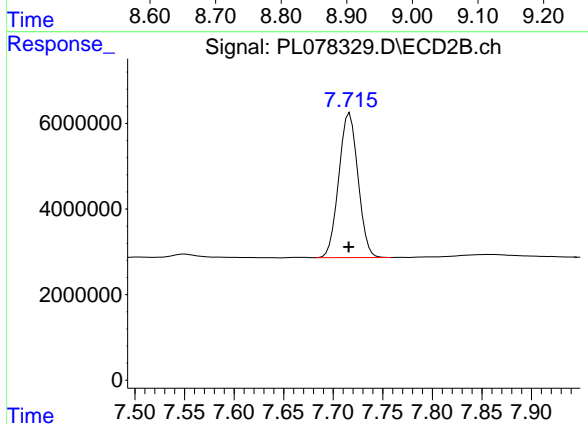
#26 Chlordane-4

R.T.: 4.851 min
 Delta R.T.: 0.000 min
 Response: 143854275
 Conc: 445.49 ng/ml



#28 Decachlorobiphenyl

R.T.: 8.903 min
 Delta R.T.: 0.002 min
 Response: 31954278
 Conc: 20.70 ng/ml



#28 Decachlorobiphenyl

R.T.: 7.717 min
 Delta R.T.: 0.001 min
 Response: 45560678
 Conc: 20.96 ng/ml