

Data Path : Z:\pestpcbsrv\HPCHEM1\ECD\_L\Data\PL101322\  
 Data File : PL078351.D  
 Signal(s) : Signal #1: ECD1A.ch Signal #2: ECD2B.ch  
 Acq On : 13 Oct 2022 21:42  
 Operator : AR\AJ  
 Sample : N5019-01MS  
 Misc :  
 ALS Vial : 37 Sample Multiplier: 1

Instrument :  
 ECD\_L  
 ClientSampleId :  
 SASP2-T-3-COMPMS

Integration File signal 1: autoint1.e  
 Integration File signal 2: autoint2.e  
 Quant Time: Oct 13 23:38:05 2022  
 Quant Method : Z:\pestpcbsrv\HPCHEM1\ECD\_L\methods\PL101222.M  
 Quant Title : GC Extractables  
 QLast Update : Wed Oct 12 15:30:54 2022  
 Response via : Initial Calibration  
 Integrator: ChemStation

Volume Inj. : 1 µl  
 Signal #1 Phase : ZB-MR2 Signal #2 Phase: ZB-MR1  
 Signal #1 Info : 30M x 0.32mm x0.2 Signal #2 Info : 30M x 0.32mm x0.5µm

	Compound	RT#1	RT#2	Resp#1	Resp#2	ng/ml	ng/ml
-----							
System Monitoring Compounds							
1)	SA Tetrachlo...	3.412	2.620	32471490	52229025	19.648	19.759
28)	SA Decachlor...	8.900	7.715	28333375	40489286	18.353	18.626
Target Compounds							
2)	A alpha-BHC	3.877	3.112	146.2E6	238.1E6	58.153	57.214
3)	MA gamma-BHC...	4.213	3.436	135.2E6	214.3E6	57.981	61.514
4)	MA Heptachlor	4.788	3.766	125.9E6	201.9E6	56.652	56.531
5)	MB Aldrin	5.128	4.040	123.4E6	202.4E6	58.923	59.493
6)	B beta-BHC	4.426	3.736	55508335	82891450	55.809	56.226
7)	B delta-BHC	4.670	3.958	113.2E6	219.0E6	61.597	59.242
8)	Heptachlo...	5.562	4.539	107.1E6	180.3E6	70.352	61.205
9)	A Endosulfan I	5.947	4.904	99212971	167.0E6	59.100	60.531
10)	B gamma-Chl...	5.817	4.788	109.8E6	180.9E6	61.606	60.445
11)	B alpha-Chl...	5.894	4.850	107.4E6	174.9E6	59.981	60.726
12)	B 4,4'-DDE	6.074	5.044	101.1E6	173.1E6	59.993	60.566
13)	MA Dieldrin	6.225	5.167	102.7E6	186.0E6	59.704	63.468
14)	MA Endrin	6.457	5.439	84497805	161.1E6	56.627	69.928
15)	B Endosulfa...	6.685	5.735	86802479	155.9E6	64.750	63.678
16)	A 4,4'-DDD	6.598	5.597	74640980	142.5E6	60.618	63.974
17)	MA 4,4'-DDT	6.910	5.845	75886490	139.2E6	51.837	61.317
18)	B Endrin al...	6.816	5.915	69751015	121.5E6	60.950	65.651
19)	B Endosulfa...	7.050	6.137	79194068	146.9E6	55.523	61.024
20)	A Methoxychlor	7.391	6.422	39402909	71029378	52.002	56.238
21)	B Endrin ke...	7.539	6.636	85477302	158.3E6	54.790	59.764
22)	Mirex	7.998	6.812	61193107	105.5E6	51.808	54.817
24)	Chlordane-2	5.128f	0.000	123.4E6	0	1752.086	N.D. #
25)	Chlordane-3	5.817	4.788	109.8E6	180.9E6	422.223	591.380 #
26)	Chlordane-4	5.894	4.850	107.4E6	174.9E6	336.317	541.528 #

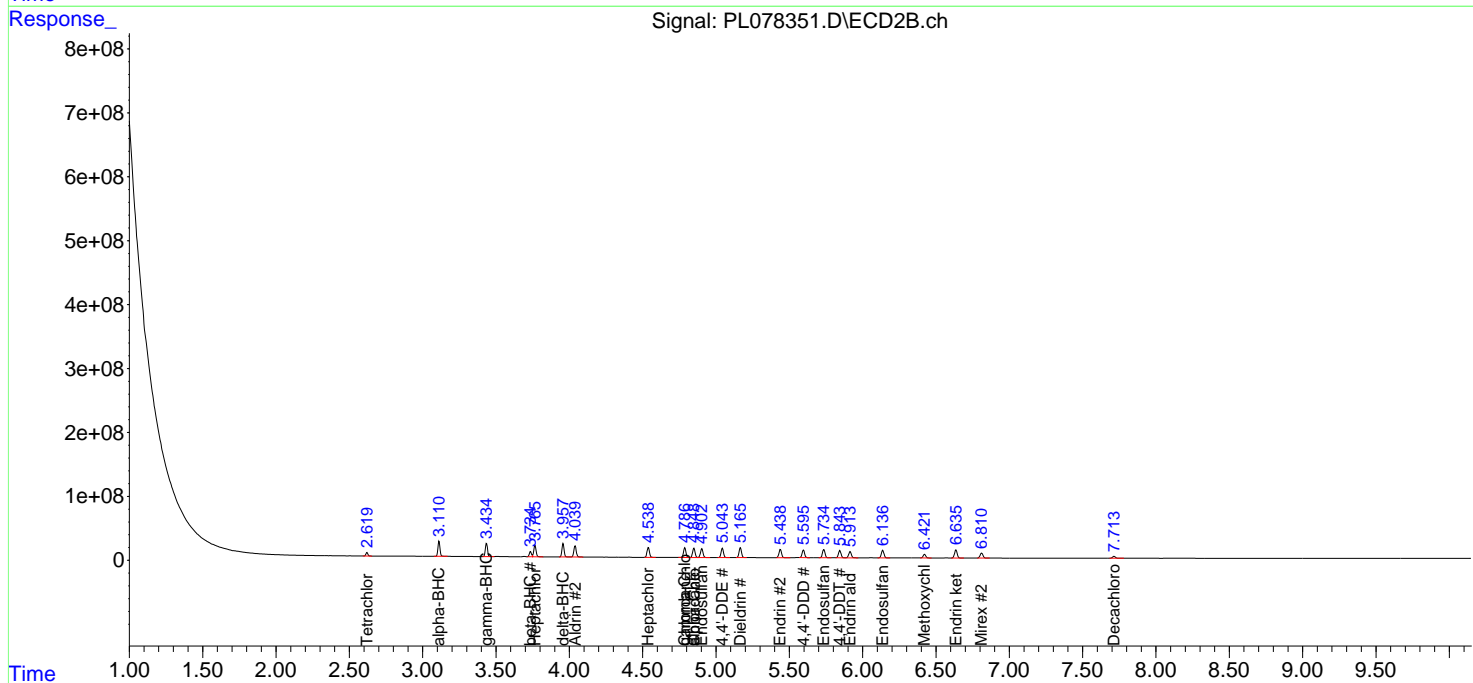
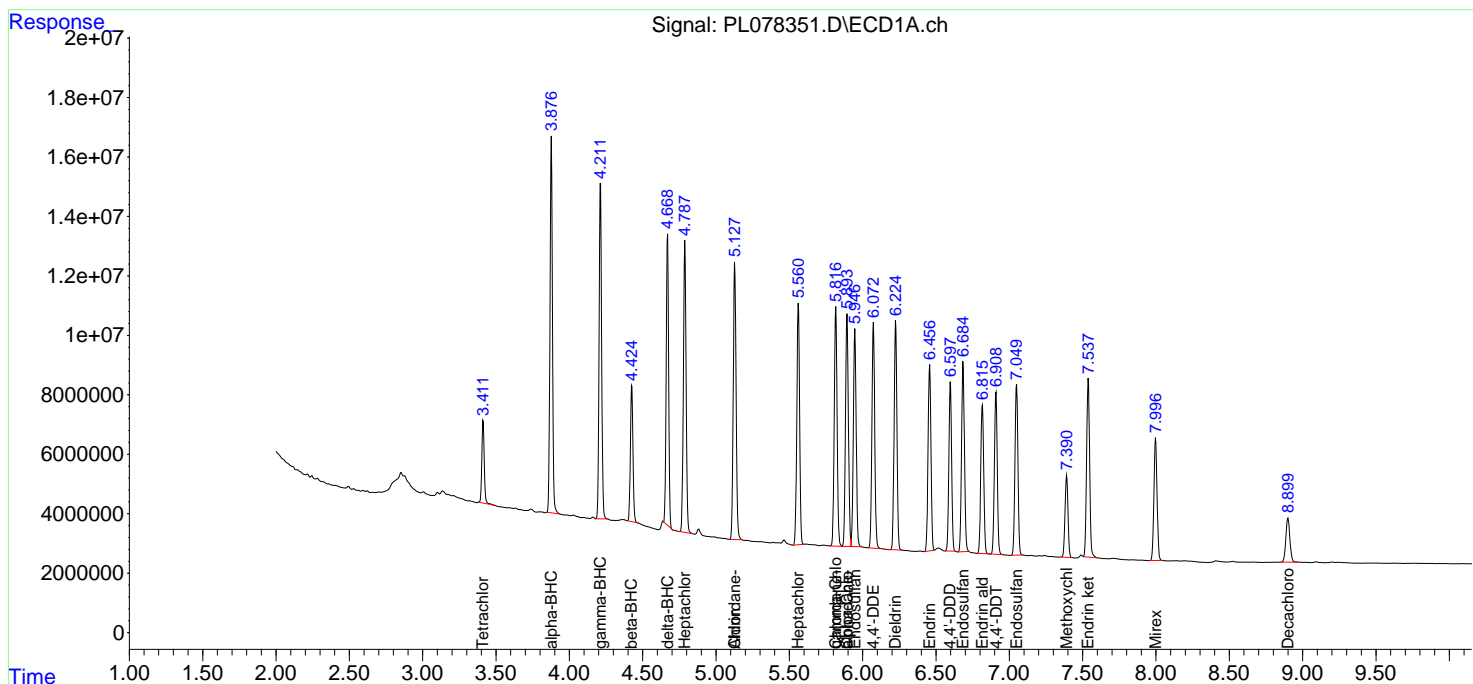
(f)=RT Delta > 1/2 Window (#)=Amounts differ by > 25% (m)=manual int.

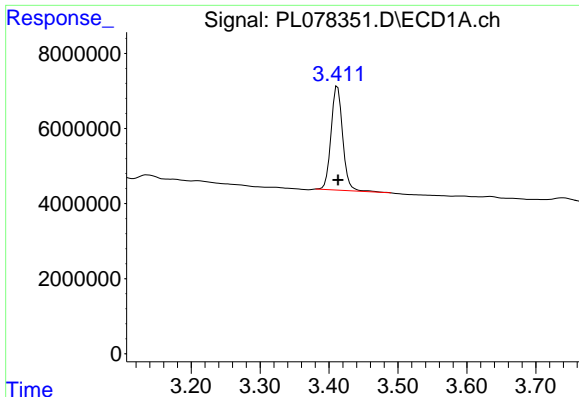
Data Path : Z:\pestpcbsrv\HPCHEM1\ECD\_L\Data\PL101322\  
 Data File : PL078351.D  
 Signal(s) : Signal #1: ECD1A.ch Signal #2: ECD2B.ch  
 Acq On : 13 Oct 2022 21:42  
 Operator : AR\AJ  
 Sample : N5019-01MS  
 Misc :  
 ALS Vial : 37 Sample Multiplier: 1

Instrument :  
 ECD\_L  
 ClientSampleId :  
 SASP2-T-3-COMPMS

Integration File signal 1: autoint1.e  
 Integration File signal 2: autoint2.e  
 Quant Time: Oct 13 23:38:05 2022  
 Quant Method : Z:\pestpcbsrv\HPCHEM1\ECD\_L\methods\PL101222.M  
 Quant Title : GC Extractables  
 QLast Update : Wed Oct 12 15:30:54 2022  
 Response via : Initial Calibration  
 Integrator: ChemStation

Volume Inj. : 1 µl  
 Signal #1 Phase : ZB-MR2 Signal #2 Phase: ZB-MR1  
 Signal #1 Info : 30M x 0.32mm x0.2 Signal #2 Info : 30M x 0.32mm x0.5µm

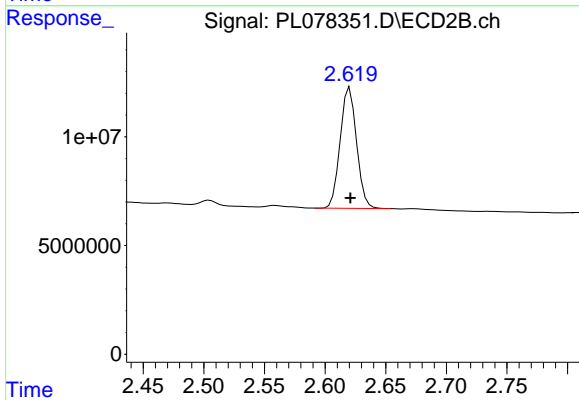




#1 Tetrachloro-m-xylene

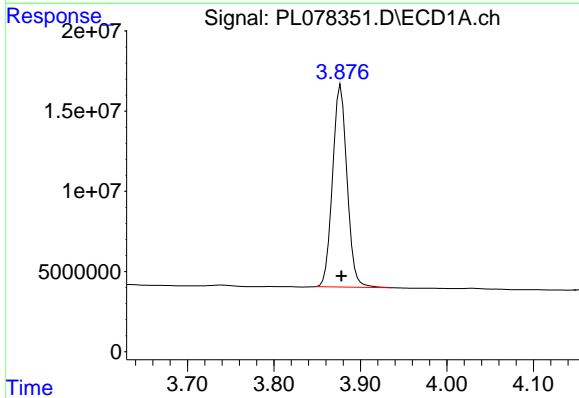
R.T.: 3.412 min  
 Delta R.T.: 0.000 min  
 Response: 32471490  
 Conc: 19.65 ng/ml

Instrument :  
 ECD\_L  
 ClientSampleId :  
 SASP2-T-3-COMPMS



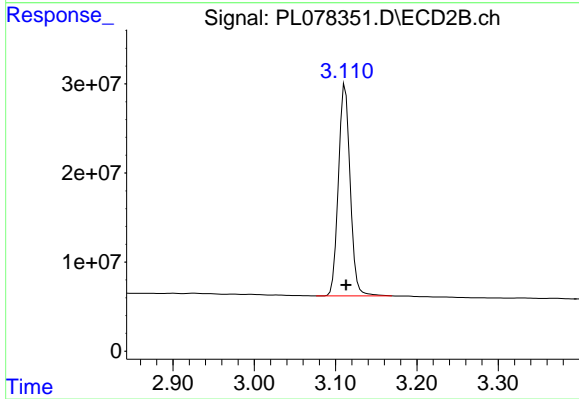
#1 Tetrachloro-m-xylene

R.T.: 2.620 min  
 Delta R.T.: 0.000 min  
 Response: 52229025  
 Conc: 19.76 ng/ml



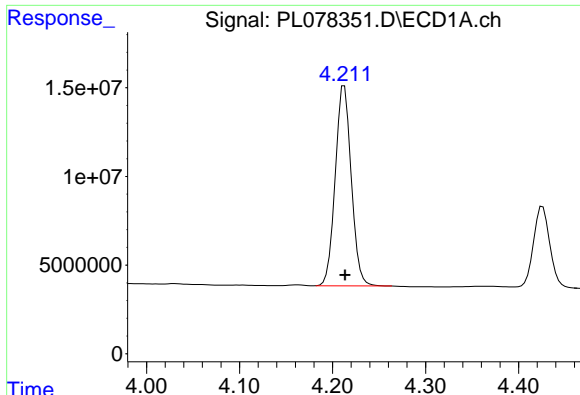
#2 alpha-BHC

R.T.: 3.877 min  
 Delta R.T.: 0.000 min  
 Response: 146238665  
 Conc: 58.15 ng/ml



#2 alpha-BHC

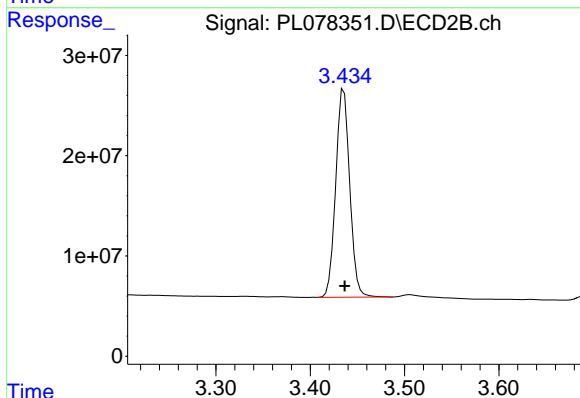
R.T.: 3.112 min  
 Delta R.T.: 0.000 min  
 Response: 238140046  
 Conc: 57.21 ng/ml



#3 gamma-BHC (Lindane)

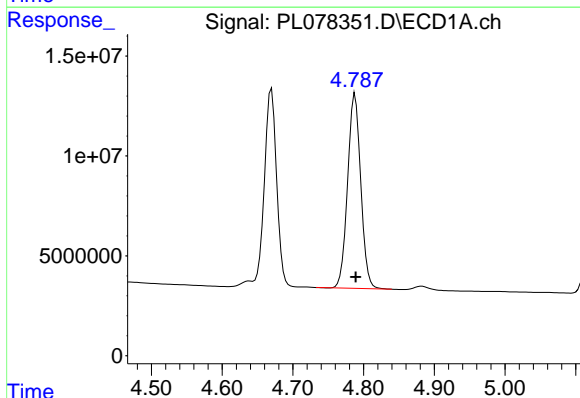
R.T.: 4.213 min  
 Delta R.T.: 0.000 min  
 Response: 135212482  
 Conc: 57.98 ng/ml

Instrument :  
 ECD\_L  
 ClientSampleId :  
 SASP2-T-3-COMPMS



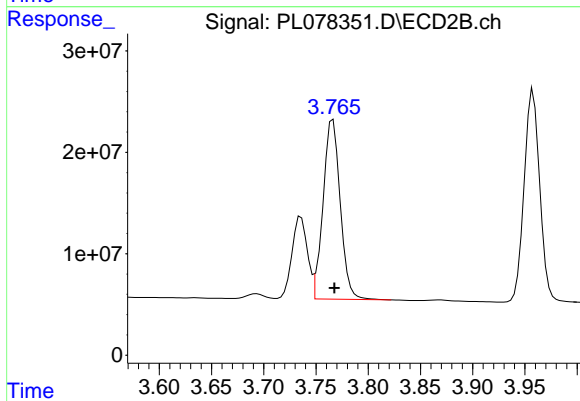
#3 gamma-BHC (Lindane)

R.T.: 3.436 min  
 Delta R.T.: 0.000 min  
 Response: 214349021  
 Conc: 61.51 ng/ml



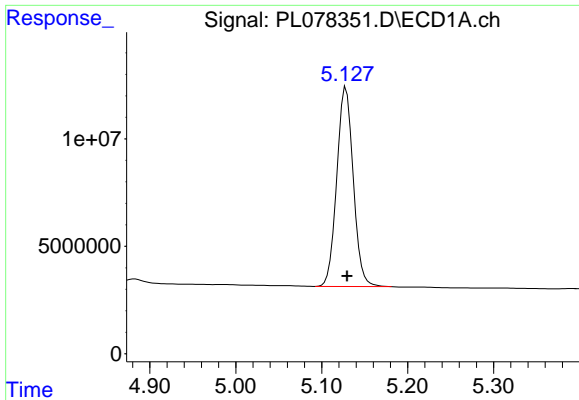
#4 Heptachlor

R.T.: 4.788 min  
 Delta R.T.: 0.000 min  
 Response: 125925808  
 Conc: 56.65 ng/ml



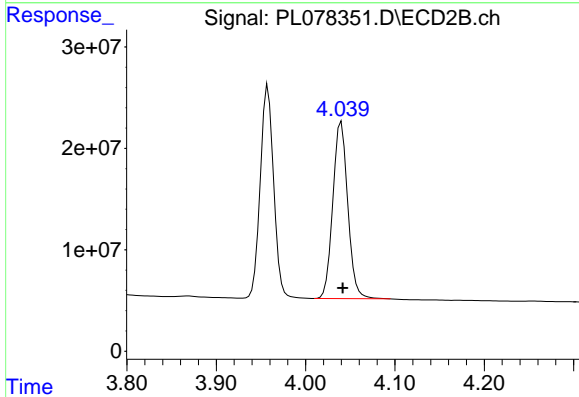
#4 Heptachlor

R.T.: 3.766 min  
 Delta R.T.: -0.002 min  
 Response: 201894581  
 Conc: 56.53 ng/ml

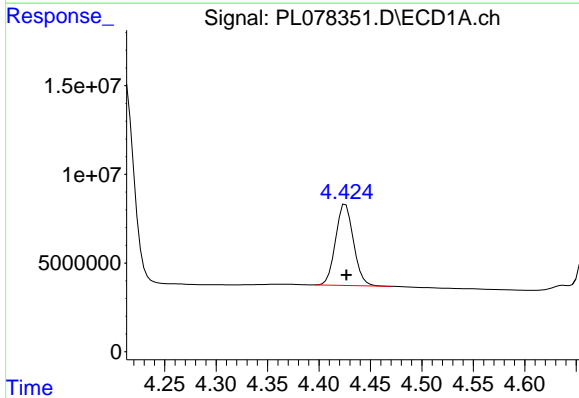


#5 Aldrin  
 R.T.: 5.128 min  
 Delta R.T.: -0.001 min  
 Response: 123405590  
 Conc: 58.92 ng/ml

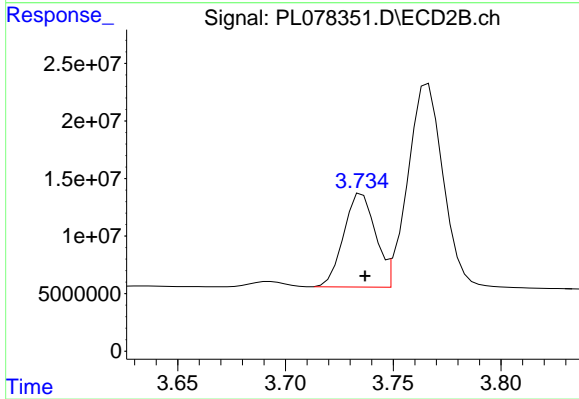
Instrument :  
 ECD\_L  
 ClientSampleId :  
 SASP2-T-3-COMPMS



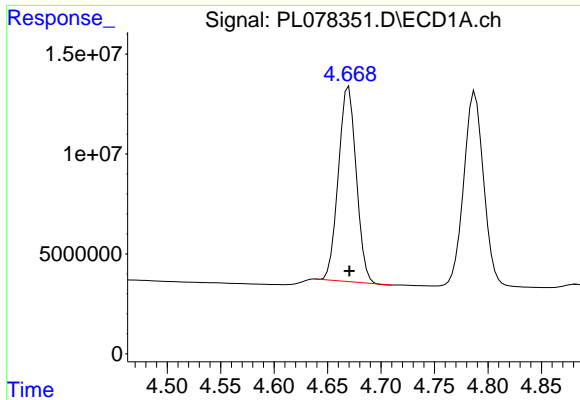
#5 Aldrin  
 R.T.: 4.040 min  
 Delta R.T.: -0.002 min  
 Response: 202390936  
 Conc: 59.49 ng/ml



#6 beta-BHC  
 R.T.: 4.426 min  
 Delta R.T.: 0.000 min  
 Response: 55508335  
 Conc: 55.81 ng/ml



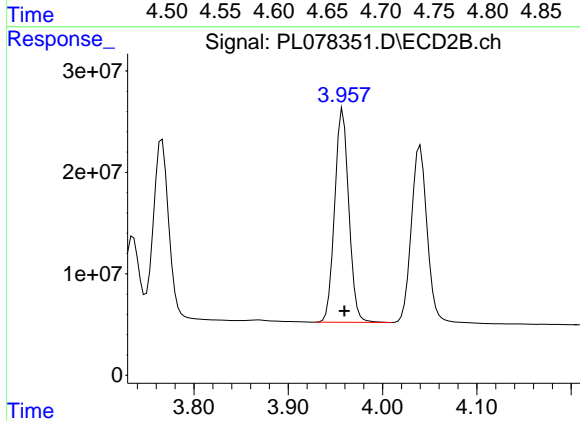
#6 beta-BHC  
 R.T.: 3.736 min  
 Delta R.T.: -0.001 min  
 Response: 82891450  
 Conc: 56.23 ng/ml



#7 delta-BHC

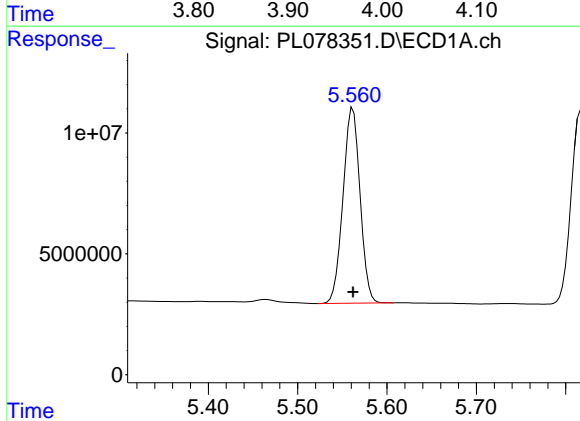
R.T.: 4.670 min  
 Delta R.T.: 0.000 min  
 Response: 113206903  
 Conc: 61.60 ng/ml

Instrument :  
 ECD\_L  
 ClientSampleId :  
 SASP2-T-3-COMPMS



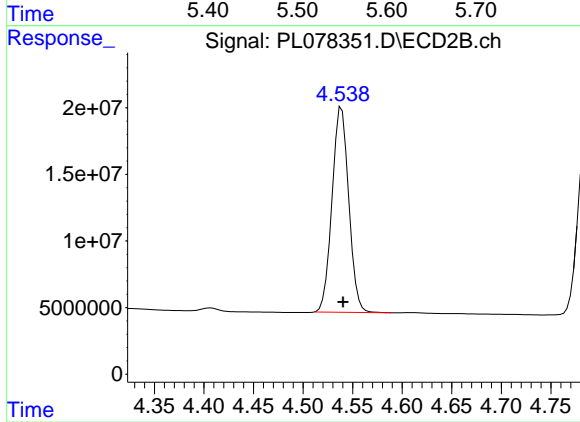
#7 delta-BHC

R.T.: 3.958 min  
 Delta R.T.: -0.002 min  
 Response: 218993495  
 Conc: 59.24 ng/ml



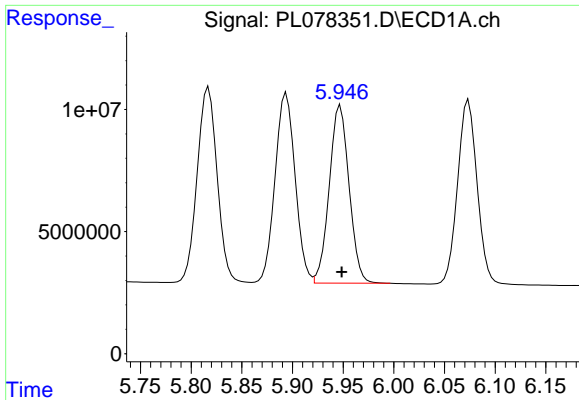
#8 Heptachlor epoxide

R.T.: 5.562 min  
 Delta R.T.: 0.000 min  
 Response: 107109900  
 Conc: 70.35 ng/ml



#8 Heptachlor epoxide

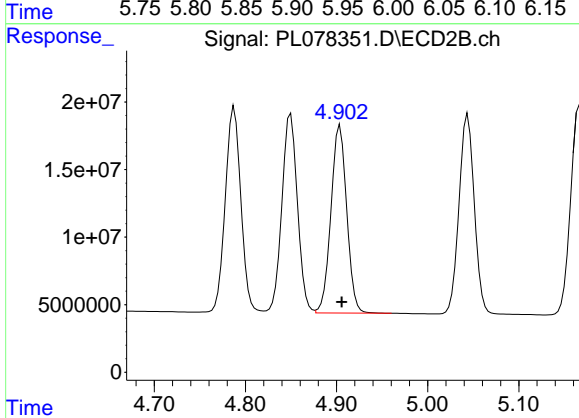
R.T.: 4.539 min  
 Delta R.T.: -0.002 min  
 Response: 180348983  
 Conc: 61.21 ng/ml



#9 Endosulfan I

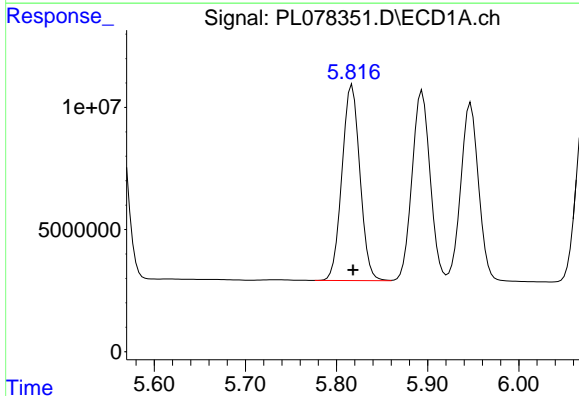
R.T.: 5.947 min  
 Delta R.T.: -0.001 min  
 Response: 99212971  
 Conc: 59.10 ng/ml

Instrument :  
 ECD\_L  
 ClientSampleId :  
 SASP2-T-3-COMPMS



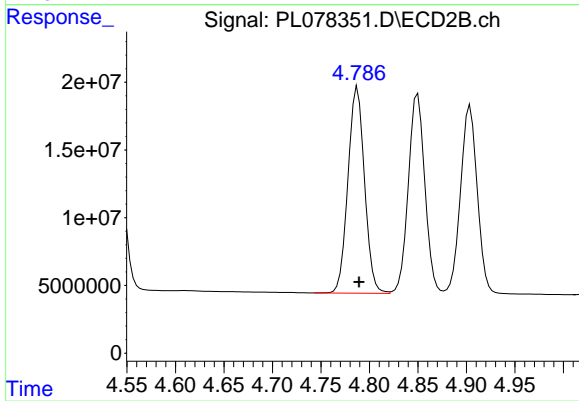
#9 Endosulfan I

R.T.: 4.904 min  
 Delta R.T.: -0.002 min  
 Response: 166950658  
 Conc: 60.53 ng/ml



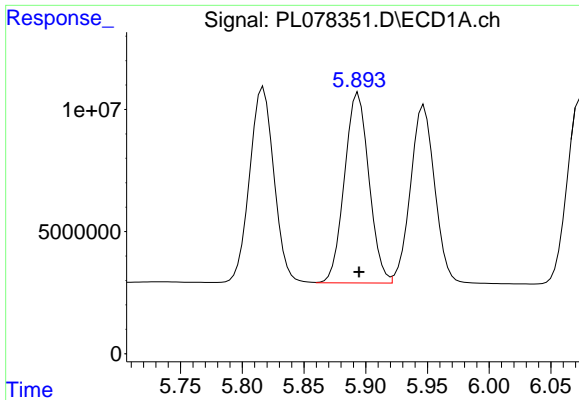
#10 gamma-Chlordane

R.T.: 5.817 min  
 Delta R.T.: 0.000 min  
 Response: 109769362  
 Conc: 61.61 ng/ml



#10 gamma-Chlordane

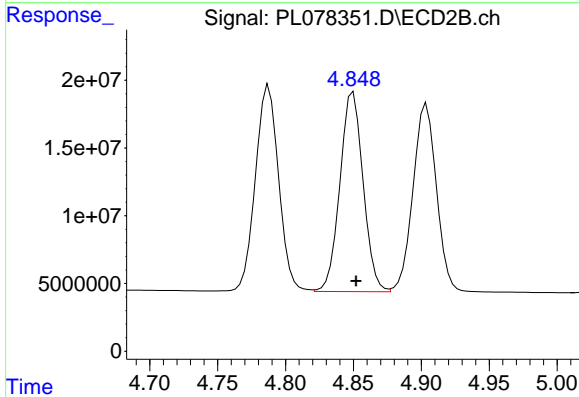
R.T.: 4.788 min  
 Delta R.T.: -0.002 min  
 Response: 180937833  
 Conc: 60.44 ng/ml



#11 alpha-Chlordane

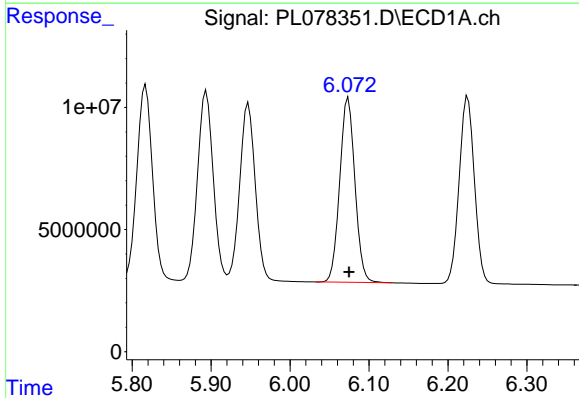
R.T.: 5.894 min  
 Delta R.T.: 0.000 min  
 Response: 107410688  
 Conc: 59.98 ng/ml

Instrument :  
 ECD\_L  
 ClientSampleId :  
 SASP2-T-3-COMPMS



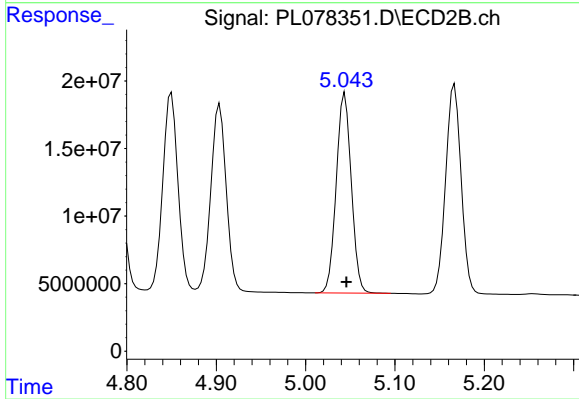
#11 alpha-Chlordane

R.T.: 4.850 min  
 Delta R.T.: -0.002 min  
 Response: 174867949  
 Conc: 60.73 ng/ml



#12 4,4'-DDE

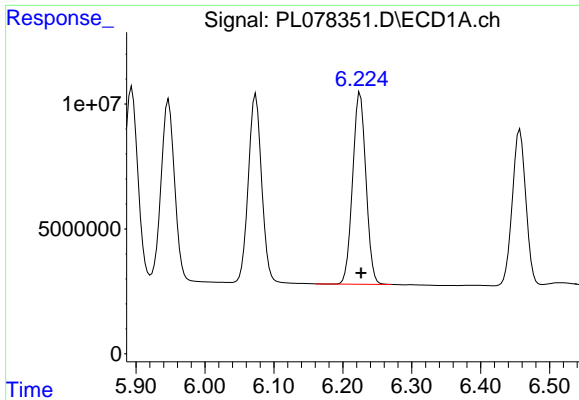
R.T.: 6.074 min  
 Delta R.T.: 0.000 min  
 Response: 101109913  
 Conc: 59.99 ng/ml



#12 4,4'-DDE

R.T.: 5.044 min  
 Delta R.T.: -0.002 min  
 Response: 173142184  
 Conc: 60.57 ng/ml

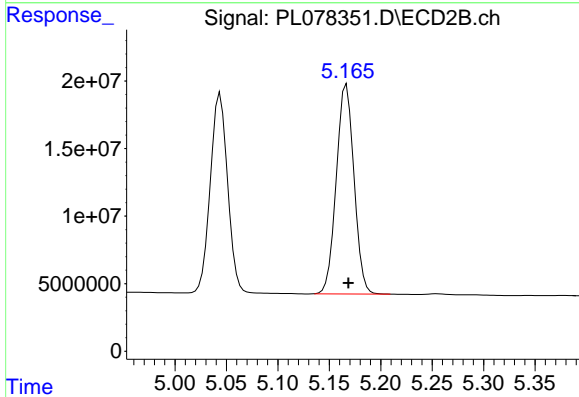




#13 Dieldrin

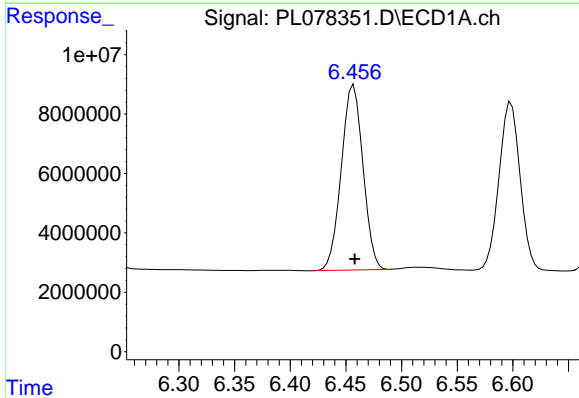
R.T.: 6.225 min  
 Delta R.T.: -0.001 min  
 Response: 102721766  
 Conc: 59.70 ng/ml

Instrument :  
 ECD\_L  
 ClientSampleId :  
 SASP2-T-3-COMPMS



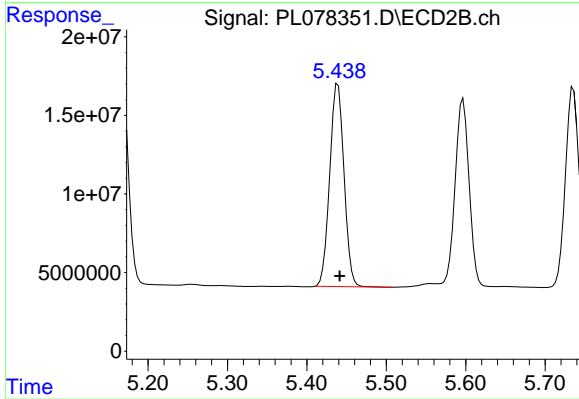
#13 Dieldrin

R.T.: 5.167 min  
 Delta R.T.: -0.002 min  
 Response: 185972913  
 Conc: 63.47 ng/ml



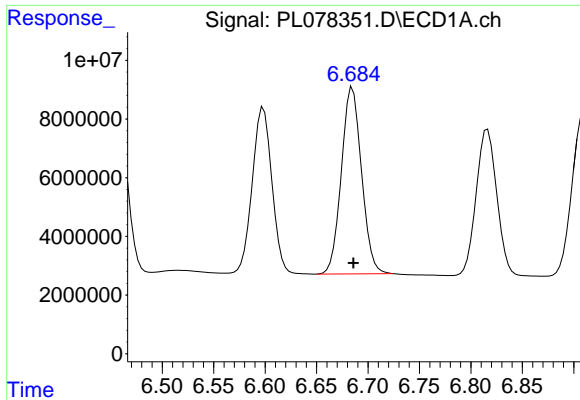
#14 Endrin

R.T.: 6.457 min  
 Delta R.T.: 0.000 min  
 Response: 84497805  
 Conc: 56.63 ng/ml



#14 Endrin

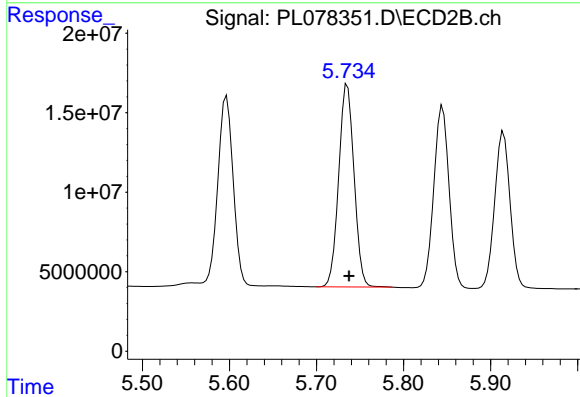
R.T.: 5.439 min  
 Delta R.T.: -0.002 min  
 Response: 161071244  
 Conc: 69.93 ng/ml



#15 Endosulfan II

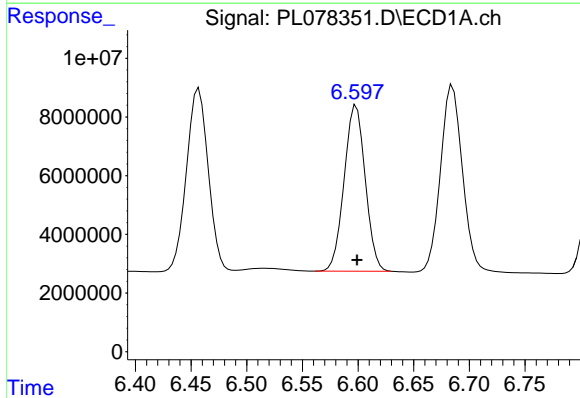
R.T.: 6.685 min  
 Delta R.T.: 0.000 min  
 Response: 86802479  
 Conc: 64.75 ng/ml

Instrument :  
 ECD\_L  
 ClientSampleId :  
 SASP2-T-3-COMPMS



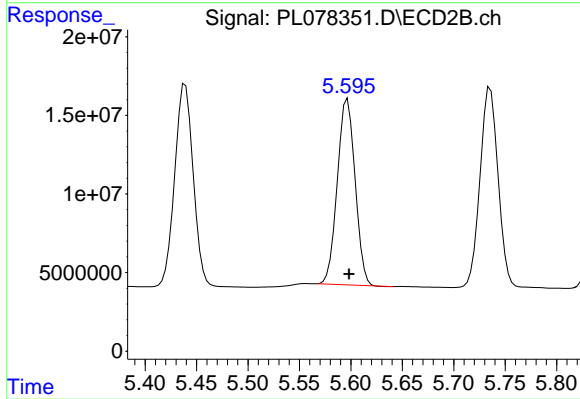
#15 Endosulfan II

R.T.: 5.735 min  
 Delta R.T.: -0.002 min  
 Response: 155883616  
 Conc: 63.68 ng/ml



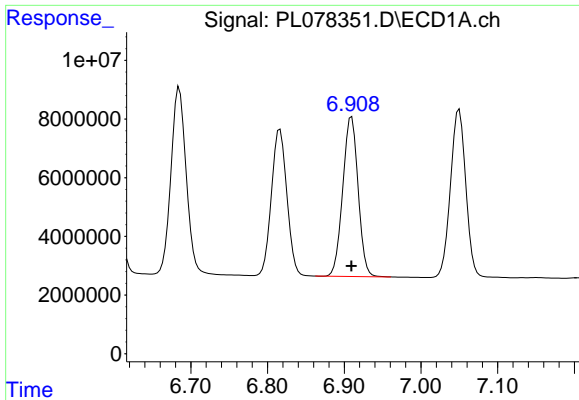
#16 4,4'-DDD

R.T.: 6.598 min  
 Delta R.T.: 0.000 min  
 Response: 74640980  
 Conc: 60.62 ng/ml



#16 4,4'-DDD

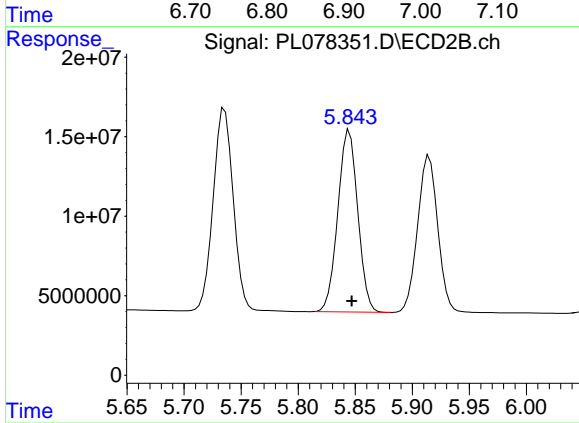
R.T.: 5.597 min  
 Delta R.T.: -0.001 min  
 Response: 142499206  
 Conc: 63.97 ng/ml



#17 4,4'-DDT

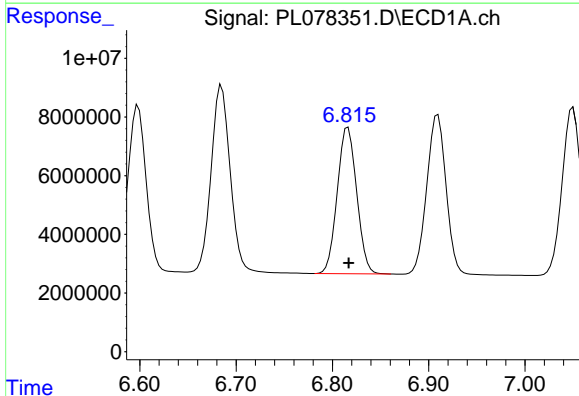
R.T.: 6.910 min  
 Delta R.T.: 0.000 min  
 Response: 75886490  
 Conc: 51.84 ng/ml

Instrument :  
 ECD\_L  
 ClientSampleId :  
 SASP2-T-3-COMPMS



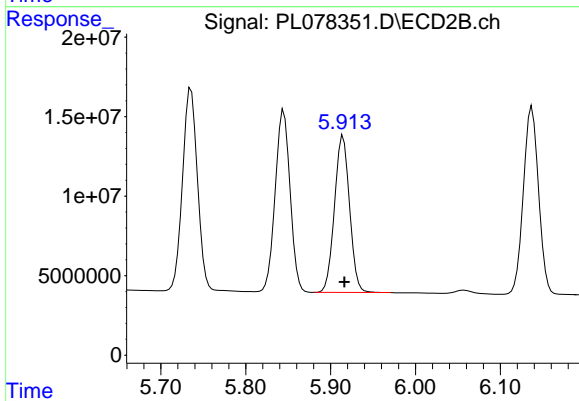
#17 4,4'-DDT

R.T.: 5.845 min  
 Delta R.T.: -0.002 min  
 Response: 139184040  
 Conc: 61.32 ng/ml



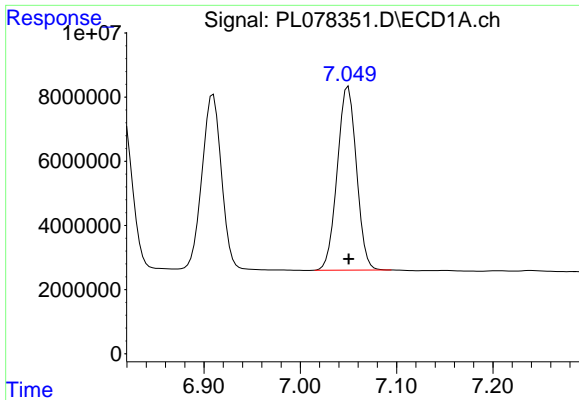
#18 Endrin aldehyde

R.T.: 6.816 min  
 Delta R.T.: 0.000 min  
 Response: 69751015  
 Conc: 60.95 ng/ml



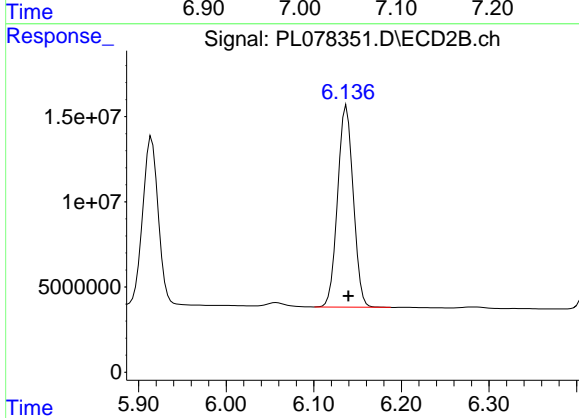
#18 Endrin aldehyde

R.T.: 5.915 min  
 Delta R.T.: -0.002 min  
 Response: 121477278  
 Conc: 65.65 ng/ml

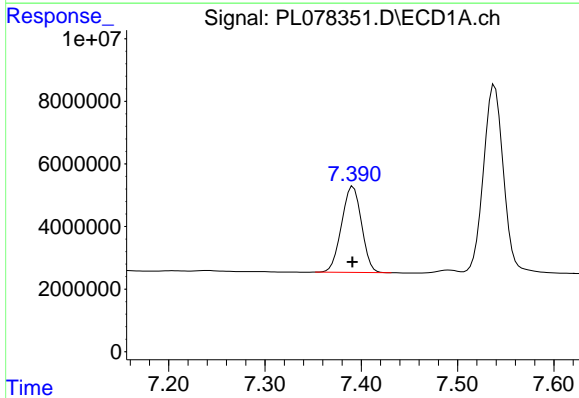


#19 Endosulfan Sulfate  
 R.T.: 7.050 min  
 Delta R.T.: 0.000 min  
 Response: 79194068  
 Conc: 55.52 ng/ml

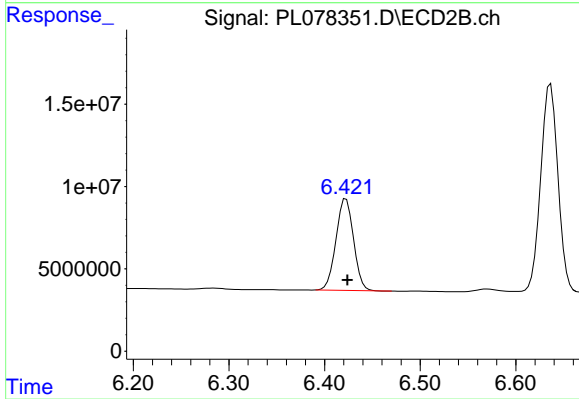
Instrument :  
 ECD\_L  
 ClientSampleId :  
 SASP2-T-3-COMPMS



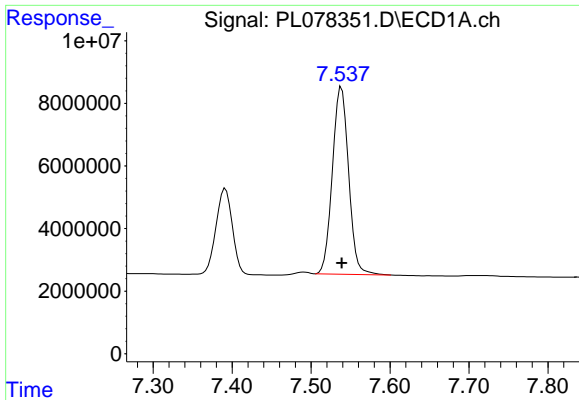
#19 Endosulfan Sulfate  
 R.T.: 6.137 min  
 Delta R.T.: -0.002 min  
 Response: 146896920  
 Conc: 61.02 ng/ml



#20 Methoxychlor  
 R.T.: 7.391 min  
 Delta R.T.: 0.000 min  
 Response: 39402909  
 Conc: 52.00 ng/ml



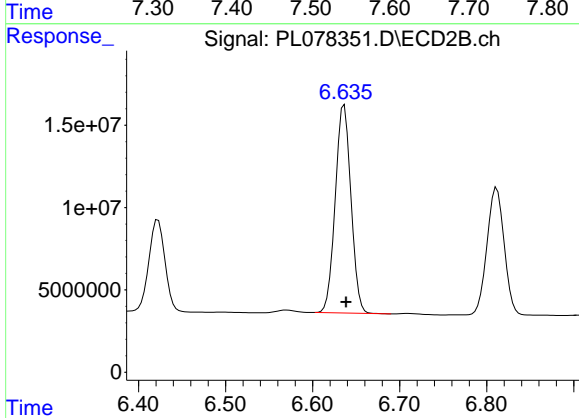
#20 Methoxychlor  
 R.T.: 6.422 min  
 Delta R.T.: -0.001 min  
 Response: 71029378  
 Conc: 56.24 ng/ml



#21 Endrin ketone

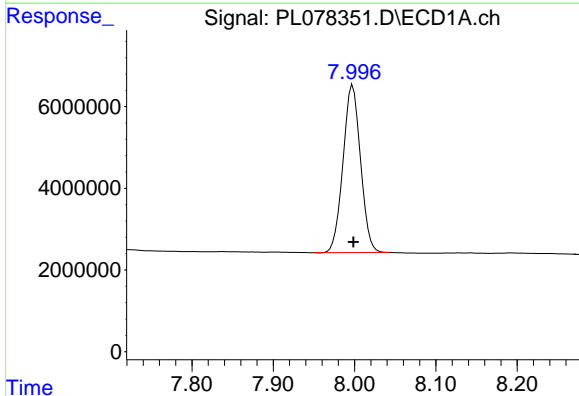
R.T.: 7.539 min  
 Delta R.T.: 0.000 min  
 Response: 85477302  
 Conc: 54.79 ng/ml

Instrument :  
 ECD\_L  
 ClientSampleId :  
 SASP2-T-3-COMPMS



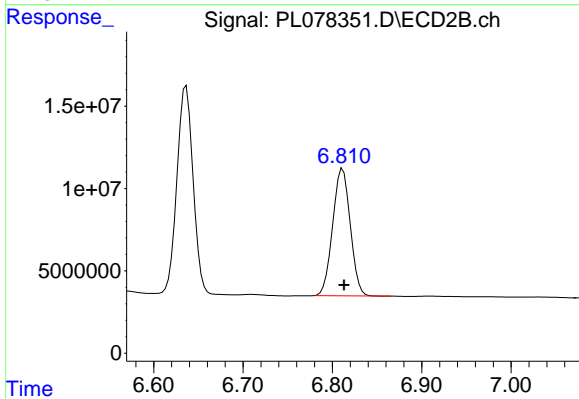
#21 Endrin ketone

R.T.: 6.636 min  
 Delta R.T.: -0.002 min  
 Response: 158339294  
 Conc: 59.76 ng/ml



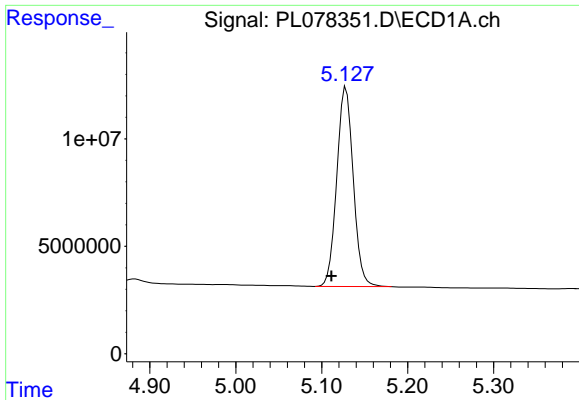
#22 Mirex

R.T.: 7.998 min  
 Delta R.T.: 0.000 min  
 Response: 61193107  
 Conc: 51.81 ng/ml



#22 Mirex

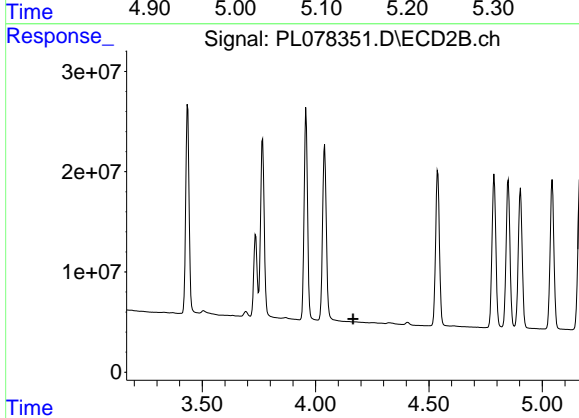
R.T.: 6.812 min  
 Delta R.T.: -0.002 min  
 Response: 105458476  
 Conc: 54.82 ng/ml



#24 Chlordane-2

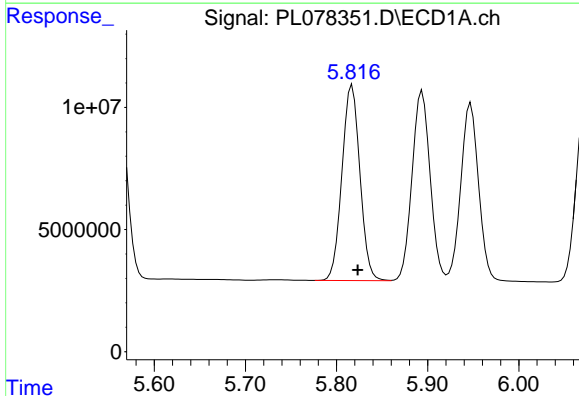
R.T.: 5.128 min  
 Delta R.T.: 0.017 min  
 Response: 123405590  
 Conc: 1752.09 ng/m

Instrument :  
 ECD\_L  
 ClientSampleId :  
 SASP2-T-3-COMPMS



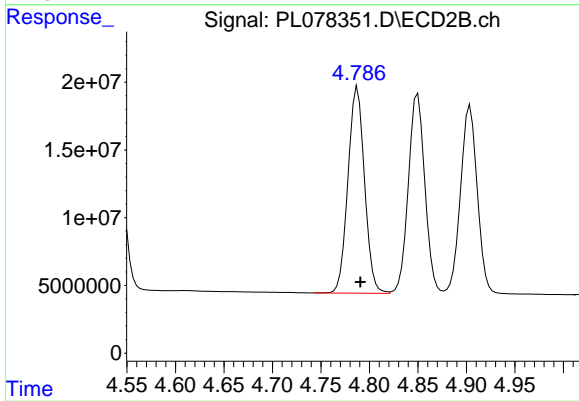
#24 Chlordane-2

R.T.: 0.000 min  
 Exp R.T. : 4.165 min  
 Response: 0  
 Conc: N.D.



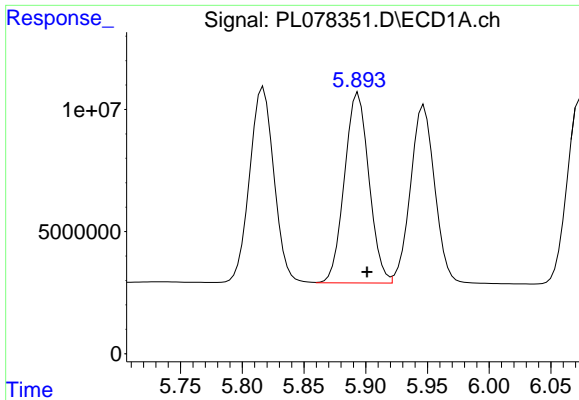
#25 Chlordane-3

R.T.: 5.817 min  
 Delta R.T.: -0.006 min  
 Response: 109769362  
 Conc: 422.22 ng/ml



#25 Chlordane-3

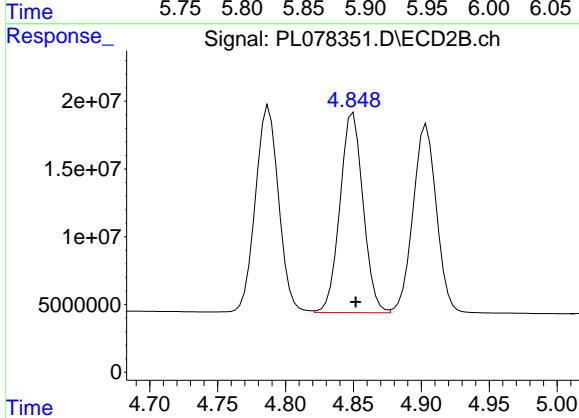
R.T.: 4.788 min  
 Delta R.T.: -0.003 min  
 Response: 180937833  
 Conc: 591.38 ng/ml



#26 Chlordane-4

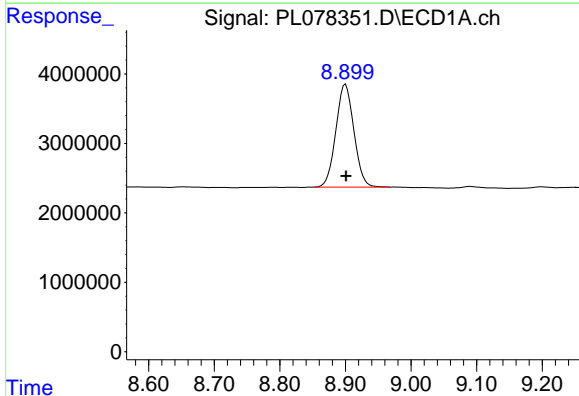
R.T.: 5.894 min  
 Delta R.T.: -0.007 min  
 Response: 107410688  
 Conc: 336.32 ng/ml

Instrument :  
 ECD\_L  
 ClientSampleId :  
 SASP2-T-3-COMPMS



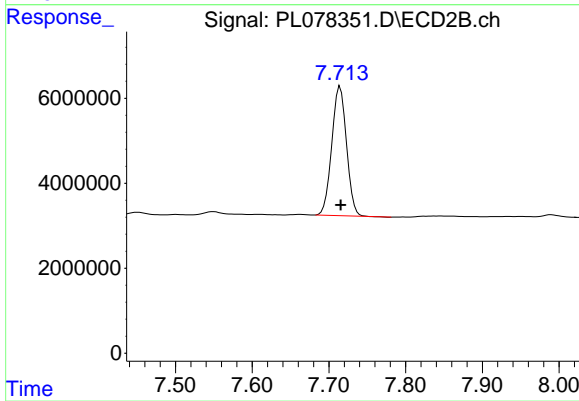
#26 Chlordane-4

R.T.: 4.850 min  
 Delta R.T.: -0.002 min  
 Response: 174867949  
 Conc: 541.53 ng/ml



#28 Decachlorobiphenyl

R.T.: 8.900 min  
 Delta R.T.: 0.000 min  
 Response: 28333375  
 Conc: 18.35 ng/ml



#28 Decachlorobiphenyl

R.T.: 7.715 min  
 Delta R.T.: 0.000 min  
 Response: 40489286  
 Conc: 18.63 ng/ml