

Data Path : Z:\pestpcbsrv\HPCHEM1\ECD_0\Data\P0010120\
 Data File : P0065184.D
 Signal(s) : Signal #1: ECD1A.CH Signal #2: ECD2B.CH
 Acq On : 31 Dec 2019 21:25
 Operator : AJ/MA
 Sample : AR1660CCC500
 Misc :
 ALS Vial : 3 Sample Multiplier: 1

Instrument :
 ECD_0
 ClientSampleId :
 AR1660CCC500

Integration File signal 1: autoint1.e
 Integration File signal 2: autoint2.e
 Quant Time: Jan 01 02:11:32 2020
 Quant Method : Z:\pestpcbsrv\HPCHEM1\ECD_0\methods\P0123119.M
 Quant Title : GC EXTRACTABLES
 QLast Update : Tue Dec 31 07:42:34 2019
 Response via : Initial Calibration
 Integrator: ChemStation 6890 Scale Mode: Small noise peaks clipped

Volume Inj. : 2 µl
 Signal #1 Phase : ZB-MR1 Signal #2 Phase: ZB-MR2
 Signal #1 Info : 30Mx0.32mmx 0.50µ Signal #2 Info : 30M x 0.32mm x 0.25µm

Compound	RT#1	RT#2	Resp#1	Resp#2	ng/ml	ng/ml

System Monitoring Compounds						
1) SA Tetrachlo...	4.178	3.451	1116236	1380422	52.923	54.642
2) SA Decachlor...	9.698	8.369	1496540	1892109	49.039	49.166
Target Compounds						
3) L1 AR-1016-1	5.332	4.515	541444	641276	504.325	499.887
4) L1 AR-1016-2	5.353	4.533	806170	934546	517.995	517.374
5) L1 AR-1016-3	5.414	4.706	495536	501713	518.070	498.102
6) L1 AR-1016-4	5.511	4.748	410230	411953	519.686	467.202
7) L1 AR-1016-5	5.802	4.958	419301	574858	508.784	521.937
31) L7 AR-1260-1	6.915	5.979	855675	1234625	512.024	520.202
32) L7 AR-1260-2	7.172	6.166	1094661	1541763	532.805	505.347
33) L7 AR-1260-3	7.528	6.318	843812	1397280	528.737	520.216
34) L7 AR-1260-4	7.751	6.785	1011176	1214862	544.087	524.271
35) L7 AR-1260-5	8.058	7.028	1876826	2848312	527.752	526.594

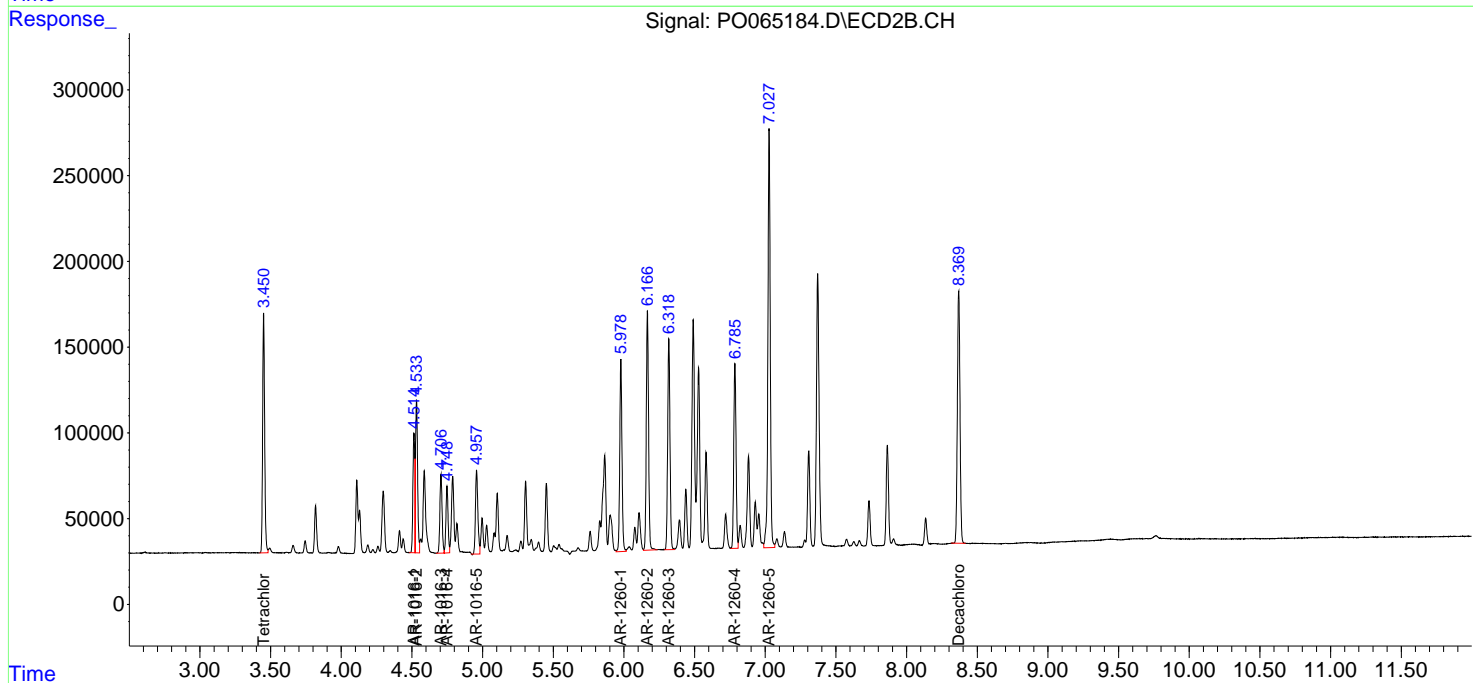
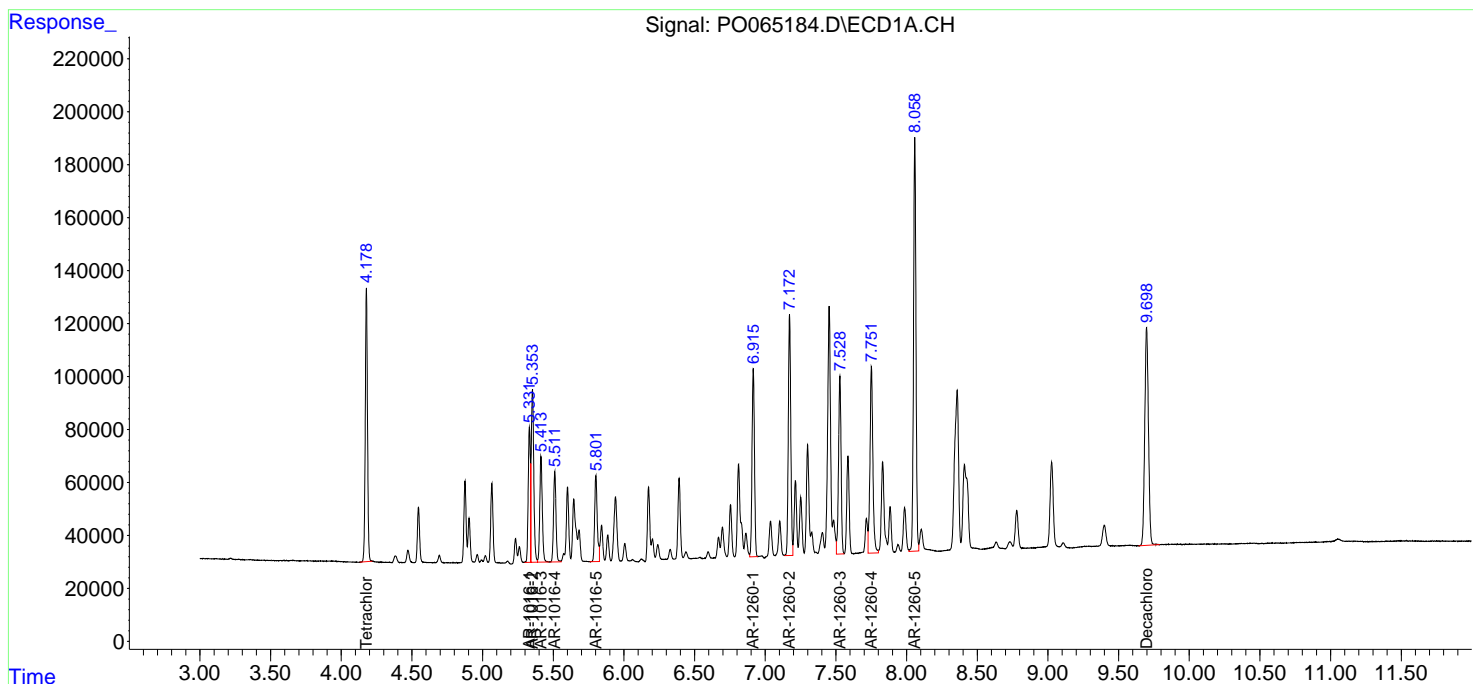
(f)=RT Delta > 1/2 Window (#)=Amounts differ by > 25% (m)=manual int.

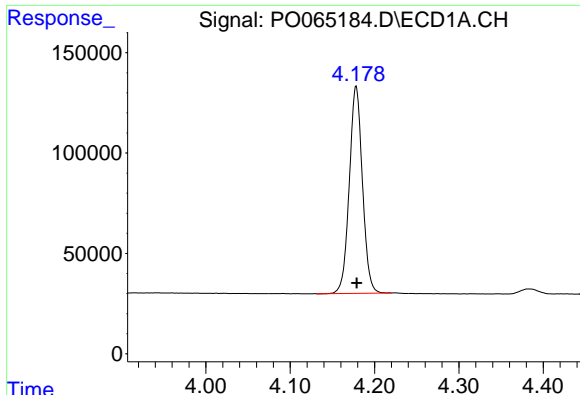
Data Path : Z:\pestpcbsrv\HPCHEM1\ECD_0\Data\P0010120\
 Data File : P0065184.D
 Signal(s) : Signal #1: ECD1A.CH Signal #2: ECD2B.CH
 Acq On : 31 Dec 2019 21:25
 Operator : AJ/MA
 Sample : AR1660CCC500
 Misc :
 ALS Vial : 3 Sample Multiplier: 1

Instrument :
 ECD_O
 ClientSampled :
 AR1660CCC500

Integration File signal 1: autoint1.e
 Integration File signal 2: autoint2.e
 Quant Time: Jan 01 02:11:32 2020
 Quant Method : Z:\pestpcbsrv\HPCHEM1\ECD_0\methods\PO123119.M
 Quant Title : GC EXTRACTABLES
 QLast Update : Tue Dec 31 07:42:34 2019
 Response via : Initial Calibration
 Integrator: ChemStation 6890 Scale Mode: Small noise peaks clipped

Volume Inj. : 2 µl
 Signal #1 Phase : ZB-MR1 Signal #2 Phase: ZB-MR2
 Signal #1 Info : 30Mx0.32mmx 0.50µ Signal #2 Info : 30M x 0.32mm x 0.25µm

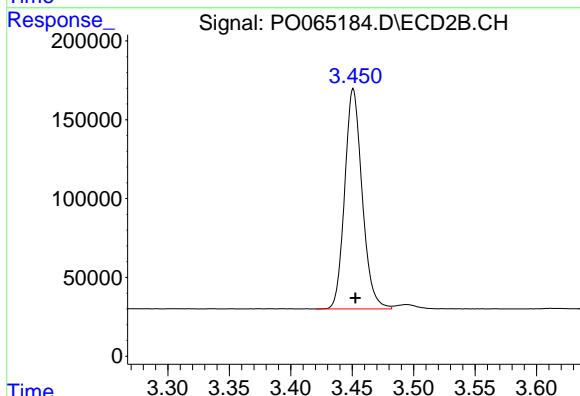




#1 Tetrachloro-m-xylene

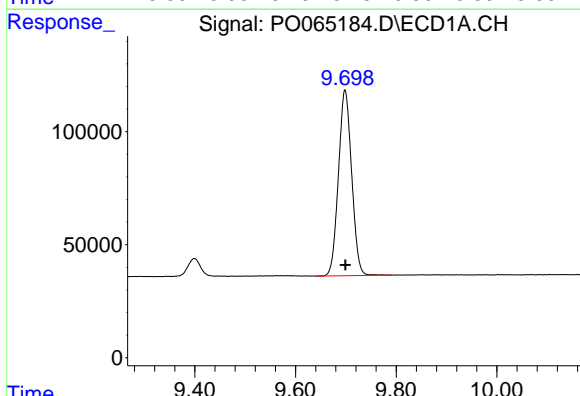
R.T.: 4.178 min
 Delta R.T.: 0.000 min
 Response: 1116236
 Conc: 52.92 ng/ml

Instrument :
 ECD_O
 ClientSampleId :
 AR1660CCC500



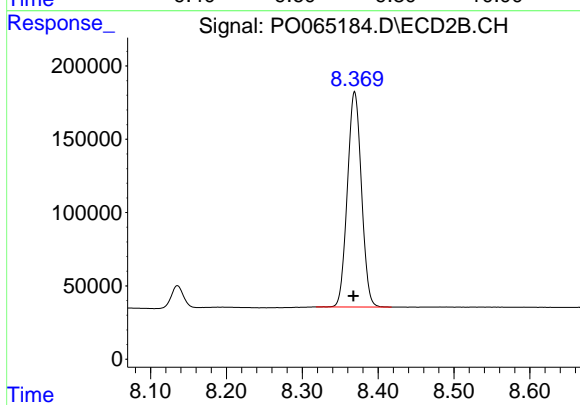
#1 Tetrachloro-m-xylene

R.T.: 3.451 min
 Delta R.T.: -0.002 min
 Response: 1380422
 Conc: 54.64 ng/ml



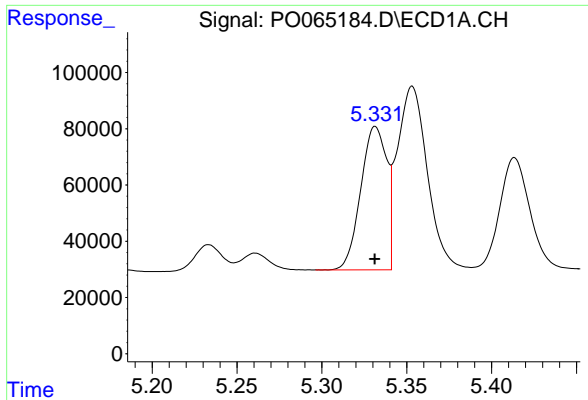
#2 Decachlorobiphenyl

R.T.: 9.698 min
 Delta R.T.: 0.000 min
 Response: 1496540
 Conc: 49.04 ng/ml



#2 Decachlorobiphenyl

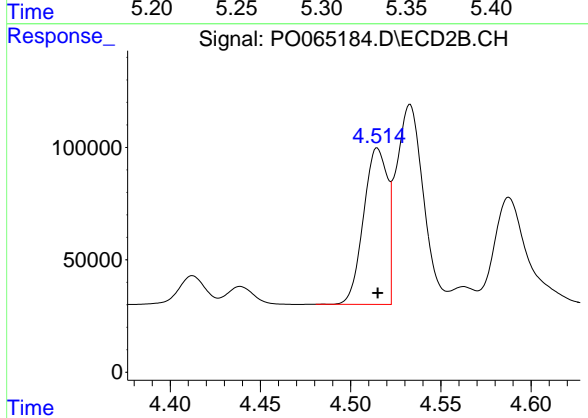
R.T.: 8.369 min
 Delta R.T.: 0.002 min
 Response: 1892109
 Conc: 49.17 ng/ml



#3 AR-1016-1

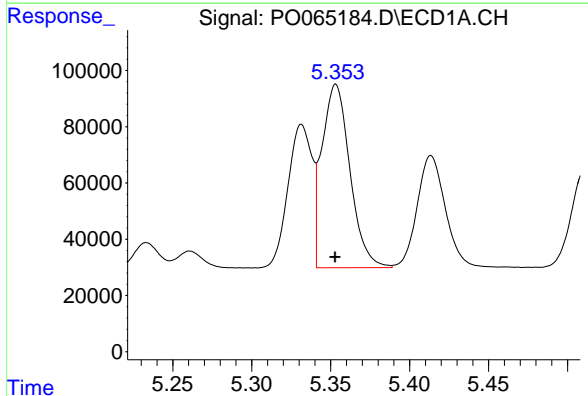
R.T.: 5.332 min
Delta R.T.: 0.000 min
Response: 541444
Conc: 504.32 ng/ml

Instrument :
ECD_O
ClientSampleId :
AR1660CCC500



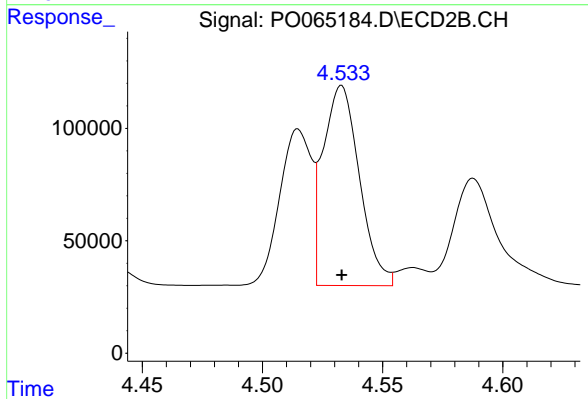
#3 AR-1016-1

R.T.: 4.515 min
Delta R.T.: 0.000 min
Response: 641276
Conc: 499.89 ng/ml



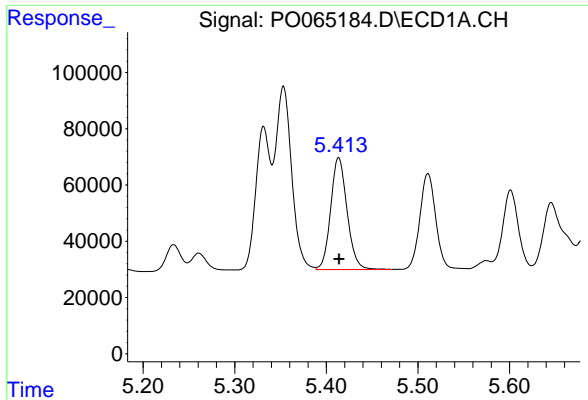
#4 AR-1016-2

R.T.: 5.353 min
Delta R.T.: 0.000 min
Response: 806170
Conc: 517.99 ng/ml



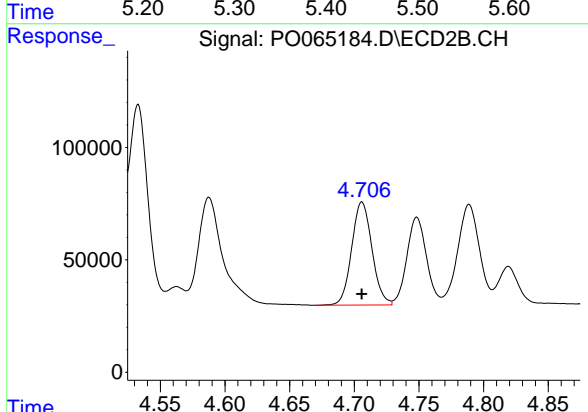
#4 AR-1016-2

R.T.: 4.533 min
Delta R.T.: 0.000 min
Response: 934546
Conc: 517.37 ng/ml

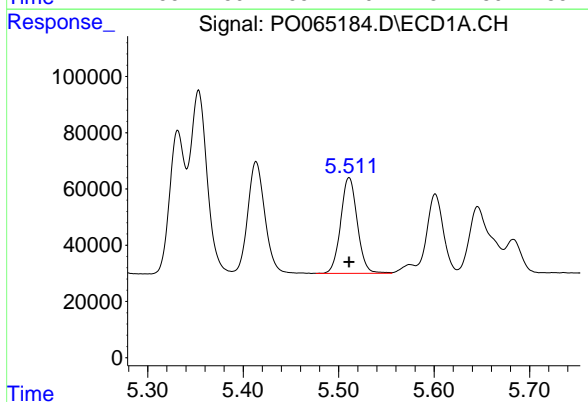


#5 AR-1016-3
 R.T.: 5.414 min
 Delta R.T.: 0.000 min
 Response: 495536
 Conc: 518.07 ng/ml

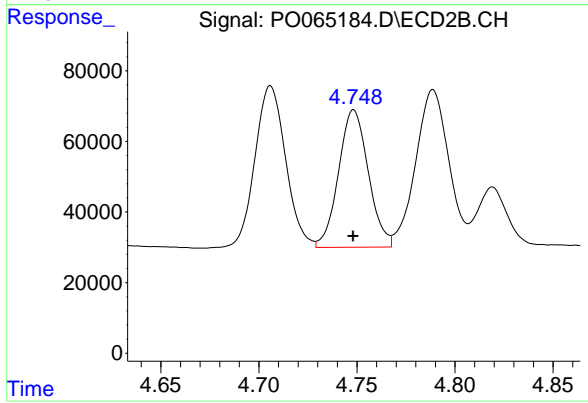
Instrument :
 ECD_O
ClientSampled :
 AR1660CCC500



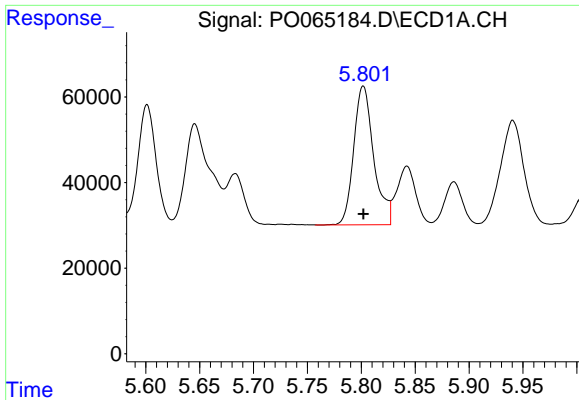
#5 AR-1016-3
 R.T.: 4.706 min
 Delta R.T.: 0.000 min
 Response: 501713
 Conc: 498.10 ng/ml



#6 AR-1016-4
 R.T.: 5.511 min
 Delta R.T.: 0.000 min
 Response: 410230
 Conc: 519.69 ng/ml



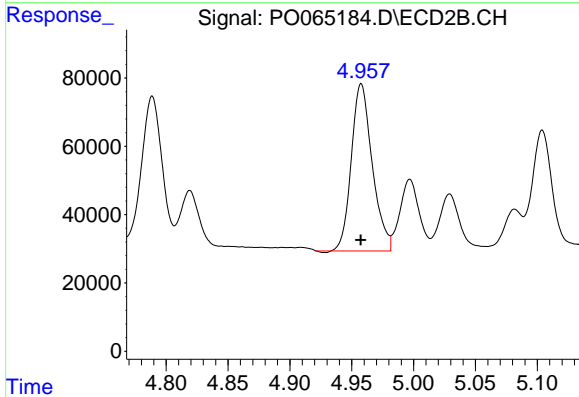
#6 AR-1016-4
 R.T.: 4.748 min
 Delta R.T.: 0.000 min
 Response: 411953
 Conc: 467.20 ng/ml



#7 AR-1016-5

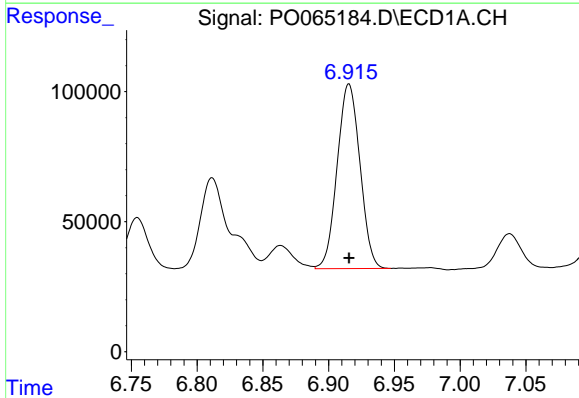
R.T.: 5.802 min
 Delta R.T.: 0.000 min
 Response: 419301
 Conc: 508.78 ng/ml

Instrument :
 ECD_O
 ClientSampleId :
 AR1660CCC500



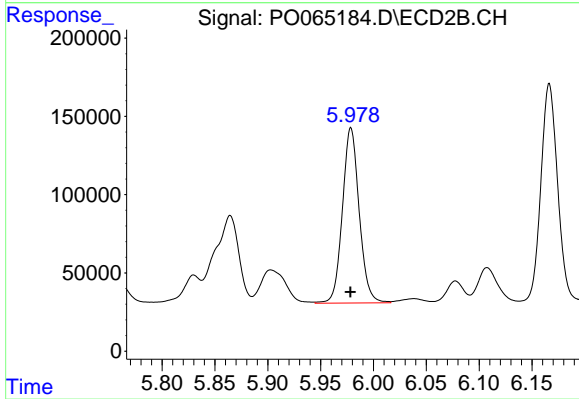
#7 AR-1016-5

R.T.: 4.958 min
 Delta R.T.: 0.000 min
 Response: 574858
 Conc: 521.94 ng/ml



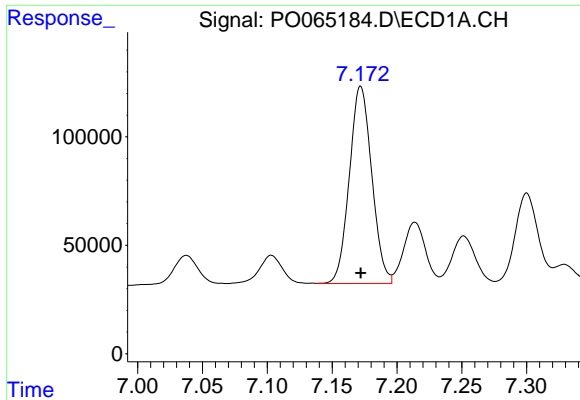
#31 AR-1260-1

R.T.: 6.915 min
 Delta R.T.: 0.000 min
 Response: 855675
 Conc: 512.02 ng/ml



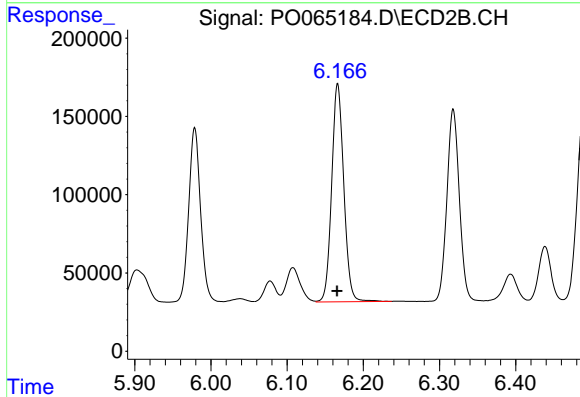
#31 AR-1260-1

R.T.: 5.979 min
 Delta R.T.: 0.000 min
 Response: 1234625
 Conc: 520.20 ng/ml

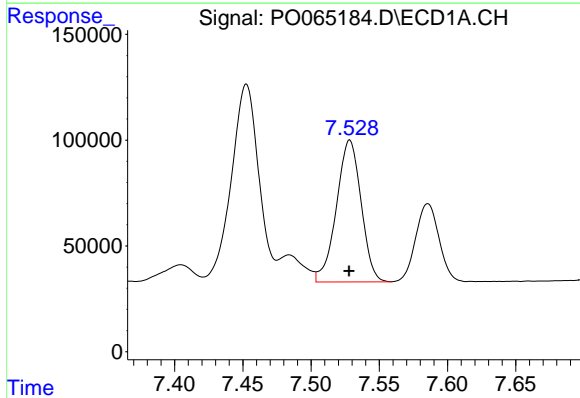


#32 AR-1260-2
 R.T.: 7.172 min
 Delta R.T.: 0.000 min
 Response: 1094661
 Conc: 532.80 ng/ml

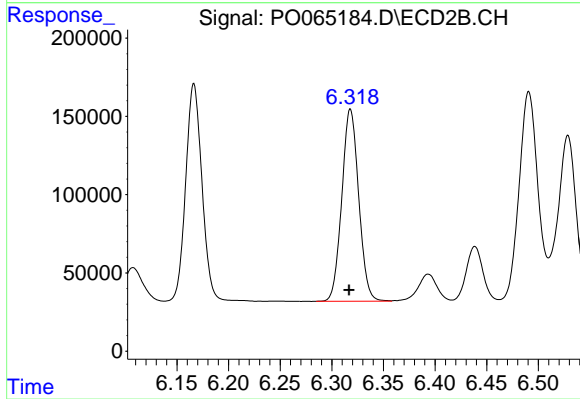
Instrument :
 ECD_O
ClientSampleId :
 AR1660CCC500



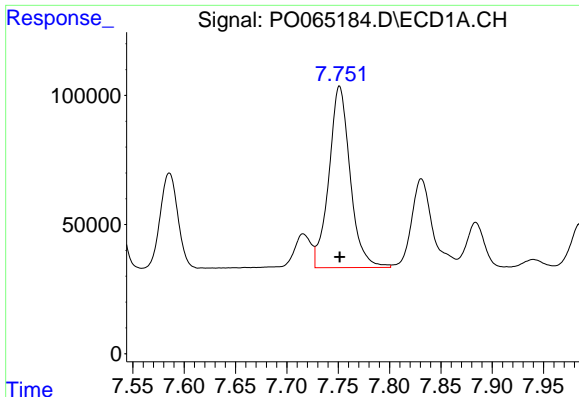
#32 AR-1260-2
 R.T.: 6.166 min
 Delta R.T.: 0.000 min
 Response: 1541763
 Conc: 505.35 ng/ml



#33 AR-1260-3
 R.T.: 7.528 min
 Delta R.T.: 0.000 min
 Response: 843812
 Conc: 528.74 ng/ml



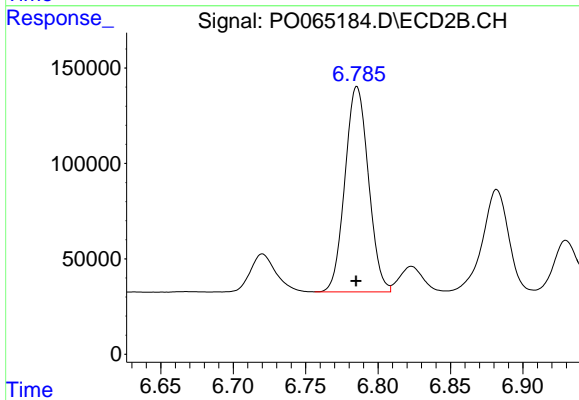
#33 AR-1260-3
 R.T.: 6.318 min
 Delta R.T.: 0.001 min
 Response: 1397280
 Conc: 520.22 ng/ml



#34 AR-1260-4

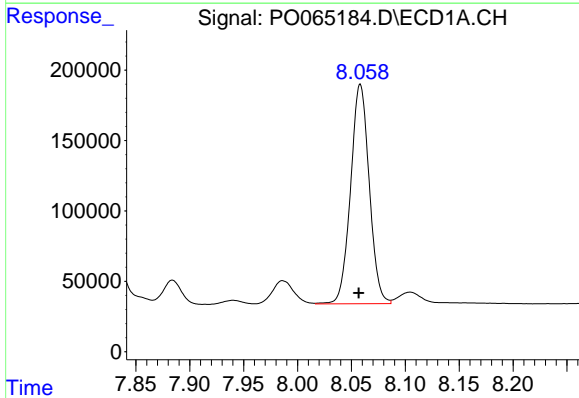
R.T.: 7.751 min
 Delta R.T.: 0.000 min
 Response: 1011176
 Conc: 544.09 ng/ml

Instrument :
 ECD_O
 ClientSampleId :
 AR1660CCC500



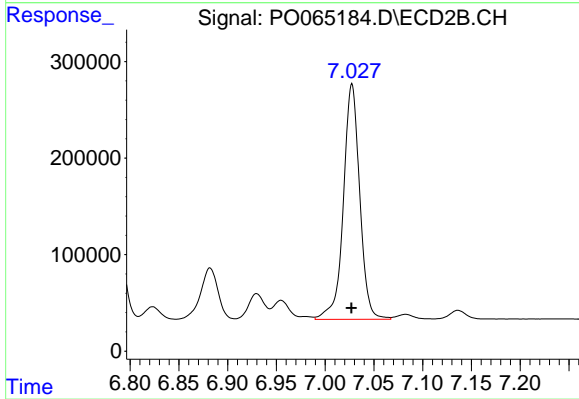
#34 AR-1260-4

R.T.: 6.785 min
 Delta R.T.: 0.000 min
 Response: 1214862
 Conc: 524.27 ng/ml



#35 AR-1260-5

R.T.: 8.058 min
 Delta R.T.: 0.001 min
 Response: 1876826
 Conc: 527.75 ng/ml



#35 AR-1260-5

R.T.: 7.028 min
 Delta R.T.: 0.000 min
 Response: 2848312
 Conc: 526.59 ng/ml