

Data Path : Z:\pestpcbsrv\HPCHEM1\ECD_0\Data\P0010120\
 Data File : P0065185.D
 Signal(s) : Signal #1: ECD1A.CH Signal #2: ECD2B.CH
 Acq On : 31 Dec 2019 22:15
 Operator : AJ/MA
 Sample : K6469-01
 Misc :
 ALS Vial : 19 Sample Multiplier: 1

Instrument :
 ECD_0
 ClientSampleId :
 174-NC-TOPSOIL-001

Integration File signal 1: autoint1.e
 Integration File signal 2: autoint2.e
 Quant Time: Jan 01 02:11:55 2020
 Quant Method : Z:\pestpcbsrv\HPCHEM1\ECD_0\methods\P0123119.M
 Quant Title : GC EXTRACTABLES
 QLast Update : Tue Dec 31 07:42:34 2019
 Response via : Initial Calibration
 Integrator: ChemStation 6890 Scale Mode: Small noise peaks clipped

Volume Inj. : 2 µl
 Signal #1 Phase : ZB-MR1 Signal #2 Phase: ZB-MR2
 Signal #1 Info : 30Mx0.32mmx 0.50µ Signal #2 Info : 30M x 0.32mm x 0.25µm

Compound	RT#1	RT#2	Resp#1	Resp#2	ng/ml	ng/ml

System Monitoring Compounds						
1) SA Tetrachlo...	4.179	3.451	356886	495343	16.921	19.608
2) SA Decachlor...	9.697	8.369	304011	401262	9.962	10.427

Target Compounds

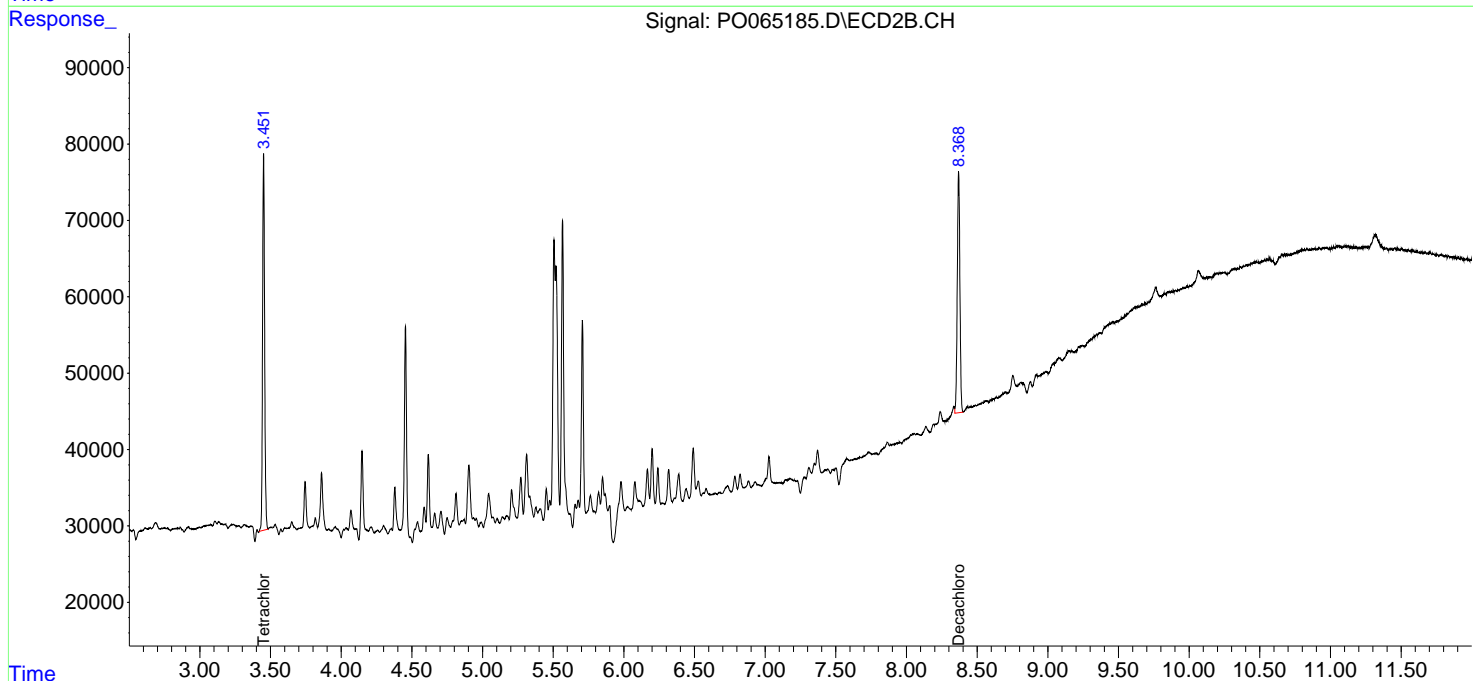
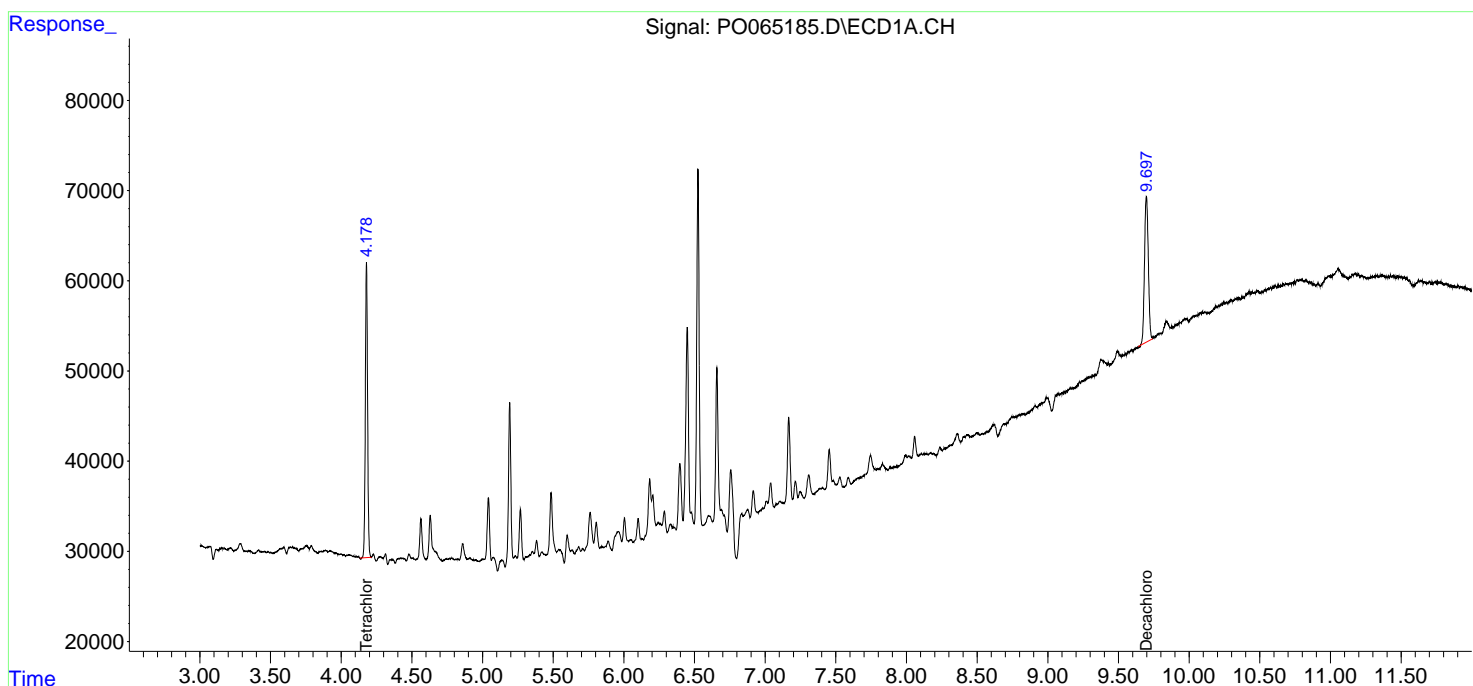
(f)=RT Delta > 1/2 Window (#)=Amounts differ by > 25% (m)=manual int.

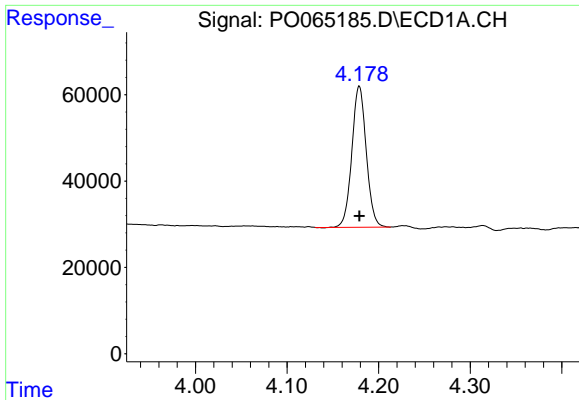
Data Path : Z:\pestpcbsrv\HPCHEM1\ECD_O\Data\P0010120\
 Data File : P0065185.D
 Signal(s) : Signal #1: ECD1A.CH Signal #2: ECD2B.CH
 Acq On : 31 Dec 2019 22:15
 Operator : AJ/MA
 Sample : K6469-01
 Misc :
 ALS Vial : 19 Sample Multiplier: 1

Instrument :
 ECD_O
ClientSampled :
 174-NC-TOPSOIL-001

Integration File signal 1: autoint1.e
 Integration File signal 2: autoint2.e
 Quant Time: Jan 01 02:11:55 2020
 Quant Method : Z:\pestpcbsrv\HPCHEM1\ECD_O\methods\P0123119.M
 Quant Title : GC EXTRACTABLES
 QLast Update : Tue Dec 31 07:42:34 2019
 Response via : Initial Calibration
 Integrator: ChemStation 6890 Scale Mode: Small noise peaks clipped

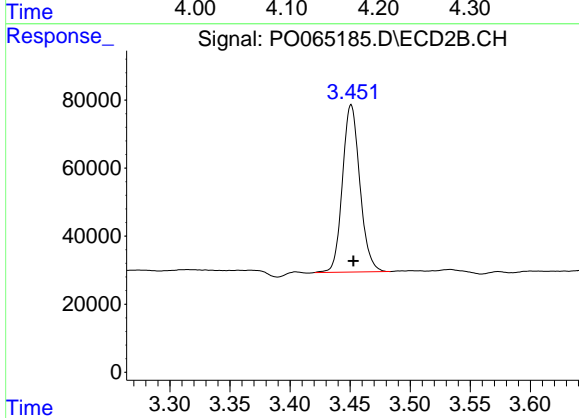
Volume Inj. : 2 µl
 Signal #1 Phase : ZB-MR1 Signal #2 Phase: ZB-MR2
 Signal #1 Info : 30Mx0.32mmx 0.50µ Signal #2 Info : 30M x 0.32mm x 0.25µm



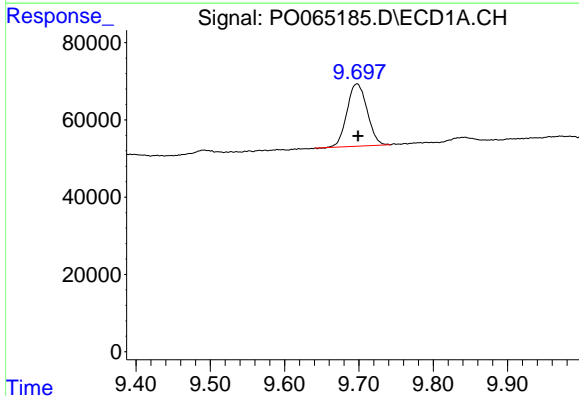


#1 Tetrachloro-m-xylene
 R.T.: 4.179 min
 Delta R.T.: 0.000 min
 Response: 356886
 Conc: 16.92 ng/ml

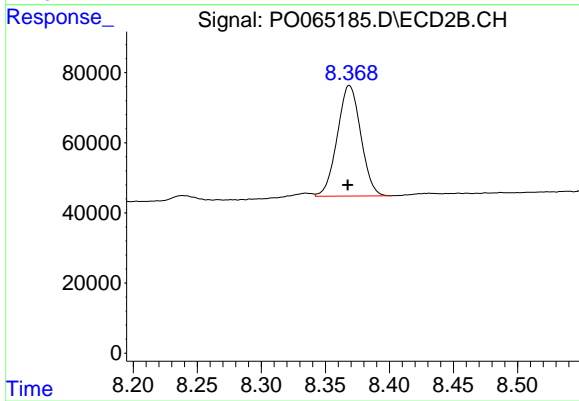
Instrument :
 ECD_O
ClientSampleId :
 174-NC-TOPSOIL-001



#1 Tetrachloro-m-xylene
 R.T.: 3.451 min
 Delta R.T.: -0.002 min
 Response: 495343
 Conc: 19.61 ng/ml



#2 Decachlorobiphenyl
 R.T.: 9.697 min
 Delta R.T.: -0.002 min
 Response: 304011
 Conc: 9.96 ng/ml



#2 Decachlorobiphenyl
 R.T.: 8.369 min
 Delta R.T.: 0.001 min
 Response: 401262
 Conc: 10.43 ng/ml