

Data Path : Z:\pestpcbsrv\HPCHEM1\ECD_0\Data\P0010120\
 Data File : P0065204.D
 Signal(s) : Signal #1: ECD1A.CH Signal #2: ECD2B.CH
 Acq On : 01 Jan 2020 4:06
 Operator : AJ/MA
 Sample : K6480-03 5X
 Misc :
 ALS Vial : 36 Sample Multiplier: 1

Instrument :
 ECD_0
ClientSampled :
 HA-18

Manual Integrations
APPROVED
 mohammad
 1/2/2020 4:21:59 PM

Integration File signal 1: autoint1.e
 Integration File signal 2: autoint2.e
 Quant Time: Jan 01 04:42:39 2020
 Quant Method : Z:\pestpcbsrv\HPCHEM1\ECD_0\methods\P0123119.M
 Quant Title : GC EXTRACTABLES
 QLast Update : Tue Dec 31 07:42:34 2019
 Response via : Initial Calibration
 Integrator: ChemStation 6890 Scale Mode: Small noise peaks clipped

Volume Inj. : 2 µl
 Signal #1 Phase : ZB-MR1 Signal #2 Phase: ZB-MR2
 Signal #1 Info : 30Mx0.32mmx 0.50µ Signal #2 Info : 30M x 0.32mm x 0.25µm

Compound	RT#1	RT#2	Resp#1	Resp#2	ng/ml	ng/ml

System Monitoring Compounds						
1) SA Tetrachlo...	4.177	3.450	117115	140480	5.553m	5.561
2) SA Decachlor...	9.695	8.366	129630	168789	4.248	4.386

Target Compounds

(f)=RT Delta > 1/2 Window (#)=Amounts differ by > 25% (m)=manual int.

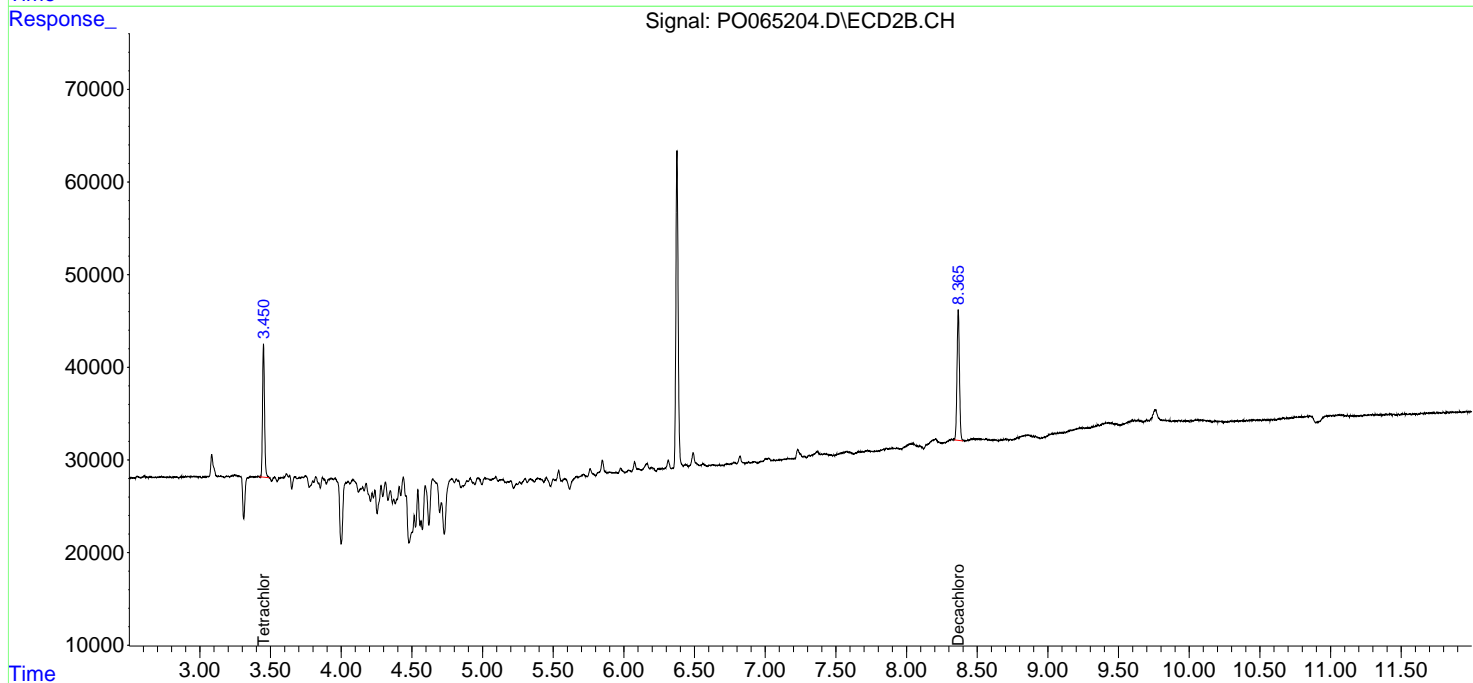
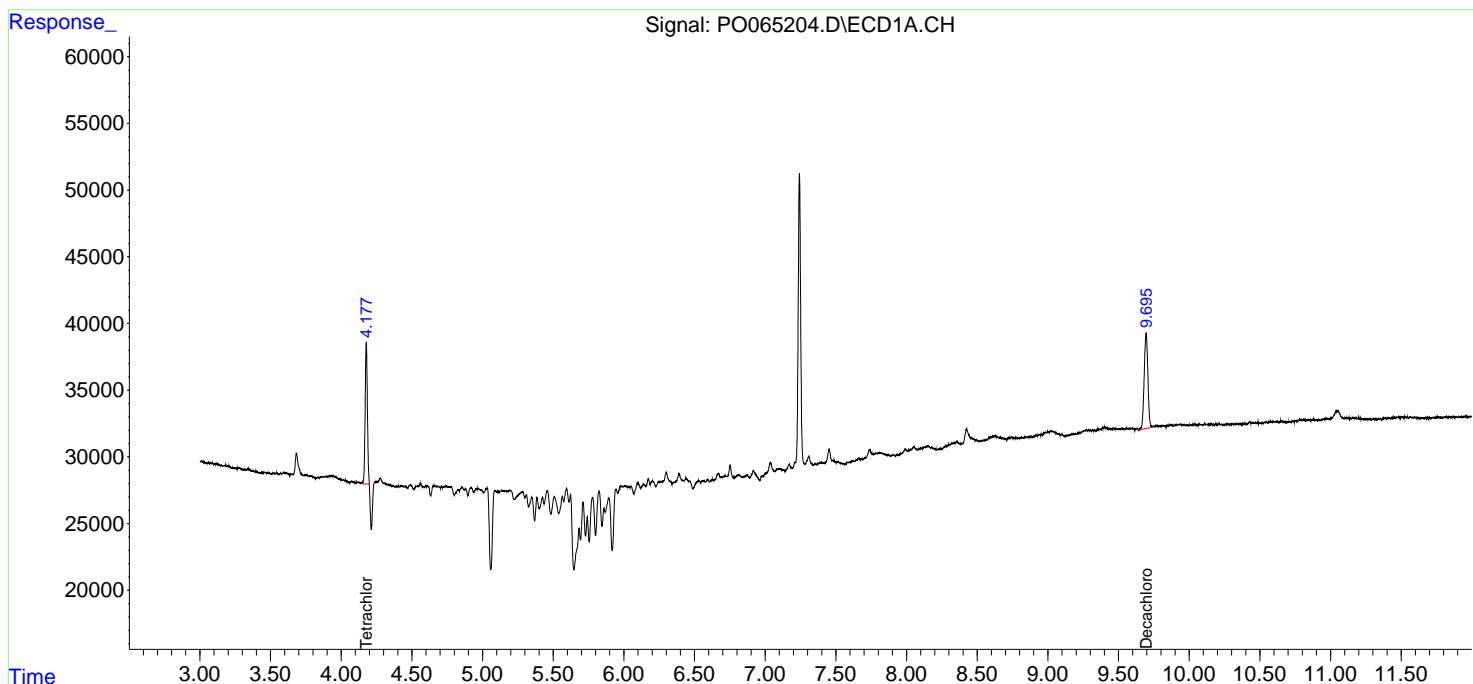
Data Path : Z:\pestpcbsrv\HPCHEM1\ECD_0\Data\P0010120\
 Data File : P0065204.D
 Signal(s) : Signal #1: ECD1A.CH Signal #2: ECD2B.CH
 Acq On : 01 Jan 2020 4:06
 Operator : AJ/MA
 Sample : K6480-03 5X
 Misc :
 ALS Vial : 36 Sample Multiplier: 1

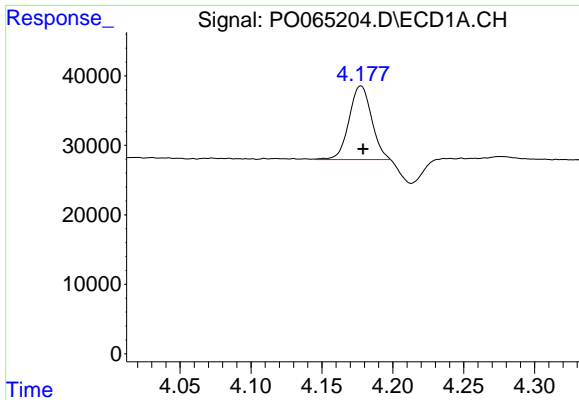
Instrument :
 ECD_O
 ClientSampled :
 HA-18

Manual Integrations
APPROVED
 mohammad
 1/2/2020 4:21:59 PM

Integration File signal 1: autoint1.e
 Integration File signal 2: autoint2.e
 Quant Time: Jan 01 04:42:39 2020
 Quant Method : Z:\pestpcbsrv\HPCHEM1\ECD_0\methods\P0123119.M
 Quant Title : GC EXTRACTABLES
 QLast Update : Tue Dec 31 07:42:34 2019
 Response via : Initial Calibration
 Integrator: ChemStation 6890 Scale Mode: Small noise peaks clipped

Volume Inj. : 2 µl
 Signal #1 Phase : ZB-MR1 Signal #2 Phase: ZB-MR2
 Signal #1 Info : 30Mx0.32mmx 0.50µm Signal #2 Info : 30M x 0.32mm x 0.25µm

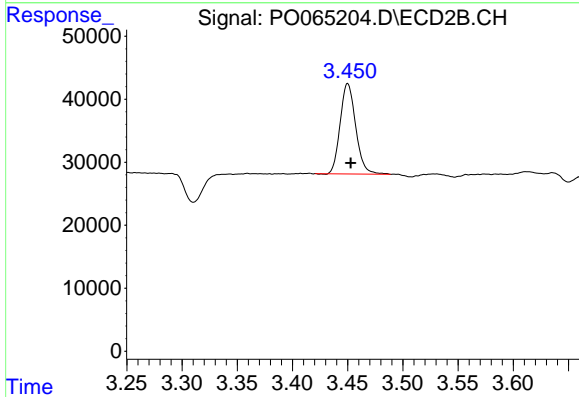




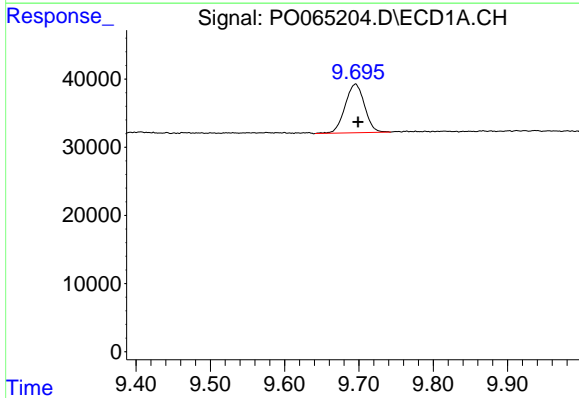
#1 Tetrachloro-m-xylene
 R.T.: 4.177 min
 Delta R.T.: -0.002 min
 Response: 117115
 Conc: 5.55 ng/ml m

Instrument :
 ECD_O
 ClientSampled :
 HA-18

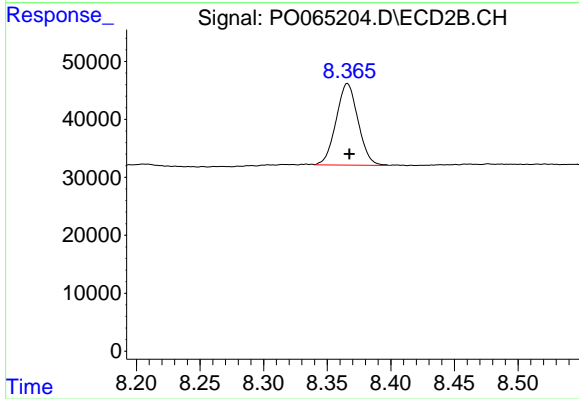
Manual Integrations
 APPROVED
 mohammad
 1/2/2020 4:21:59 PM



#1 Tetrachloro-m-xylene
 R.T.: 3.450 min
 Delta R.T.: -0.003 min
 Response: 140480
 Conc: 5.56 ng/ml



#2 Decachlorobiphenyl
 R.T.: 9.695 min
 Delta R.T.: -0.004 min
 Response: 129630
 Conc: 4.25 ng/ml



#2 Decachlorobiphenyl
 R.T.: 8.366 min
 Delta R.T.: -0.002 min
 Response: 168789
 Conc: 4.39 ng/ml