

Data Path : Z:\pestpcbsrv\HPCHEM1\ECD\_0\Data\P0010225\  
 Data File : P0108894.D  
 Signal(s) : Signal #1: ECD1A.ch Signal #2: ECD2B.ch  
 Acq On : 03 Jan 2025 08:01  
 Operator : YP/AJ  
 Sample : P0010225ICV500  
 Misc :  
 ALS Vial : 31 Sample Multiplier: 1

**Instrument :**  
 ECD\_0  
**ClientSampleId :**  
 ICVPO010225

**Manual Integrations**  
**APPROVED**

Reviewed By :Yogesh Patel 01/03/2025  
 Supervised By :Ankita Jodhani 01/03/2025

Integration File signal 1: autoint1.e  
 Integration File signal 2: autoint2.e  
 Quant Time: Jan 03 10:46:11 2025  
 Quant Method : Z:\pestpcbsrv\HPCHEM1\ECD\_0\methods\P0010225.M  
 Quant Title : GC EXTRACTABLES  
 QLast Update : Fri Jan 03 04:48:29 2025  
 Response via : Initial Calibration  
 Integrator: ChemStation

Volume Inj. : 2 µl  
 Signal #1 Phase : ZB-MR1 Signal #2 Phase: ZB-MR2  
 Signal #1 Info : 30Mx0.32mmx 0.50µ Signal #2 Info : 30M x 0.32mm x 0.25µm

Compound	RT#1	RT#2	Resp#1	Resp#2	ng/ml	ng/ml
-----						
System Monitoring Compounds						
1) SA Tetrachlo...	3.703	3.700	513.9E6	296.7E6	55.476	53.509
2) SA Decachlor...	8.769	8.719	403.0E6	186.5E6	56.771	49.700
Target Compounds						
3) L1 AR-1016-1	4.799	4.786	172.7E6	95748613	536.838	521.542
4) L1 AR-1016-2	4.819	4.805	238.0E6	133.1E6	537.706	527.955
5) L1 AR-1016-3	4.874	4.981	167.1E6	76678064	531.083m	540.505
6) L1 AR-1016-4	4.996	5.022	132.9E6	62379903	537.427	525.434
7) L1 AR-1016-5	5.254	5.236	143.6E6	80833935	546.418	527.214
31) L7 AR-1260-1	6.297	6.270	251.5E6	140.9E6	536.680	522.674
32) L7 AR-1260-2	6.485	6.457	304.3E6	169.5E6	533.309	522.594
33) L7 AR-1260-3	6.854	6.611	260.3E6	158.2E6	542.224	506.438
34) L7 AR-1260-4	7.115	7.083	238.6E6	128.3E6	545.623	514.635
35) L7 AR-1260-5	7.356	7.323	558.6E6	291.4E6	554.700	515.032
-----						

(f)=RT Delta > 1/2 Window (#)=Amounts differ by > 25% (m)=manual int.

Data Path : Z:\pestpcbsrv\HPCHEM1\ECD\_O\Data\PO010225\  
 Data File : PO108894.D  
 Signal(s) : Signal #1: ECD1A.ch Signal #2: ECD2B.ch  
 Acq On : 03 Jan 2025 08:01  
 Operator : YP/AJ  
 Sample : PO010225ICV500  
 Misc :  
 ALS Vial : 31 Sample Multiplier: 1

Instrument :

ECD\_O

ClientSampleId :

ICVPO010225

Manual Integrations

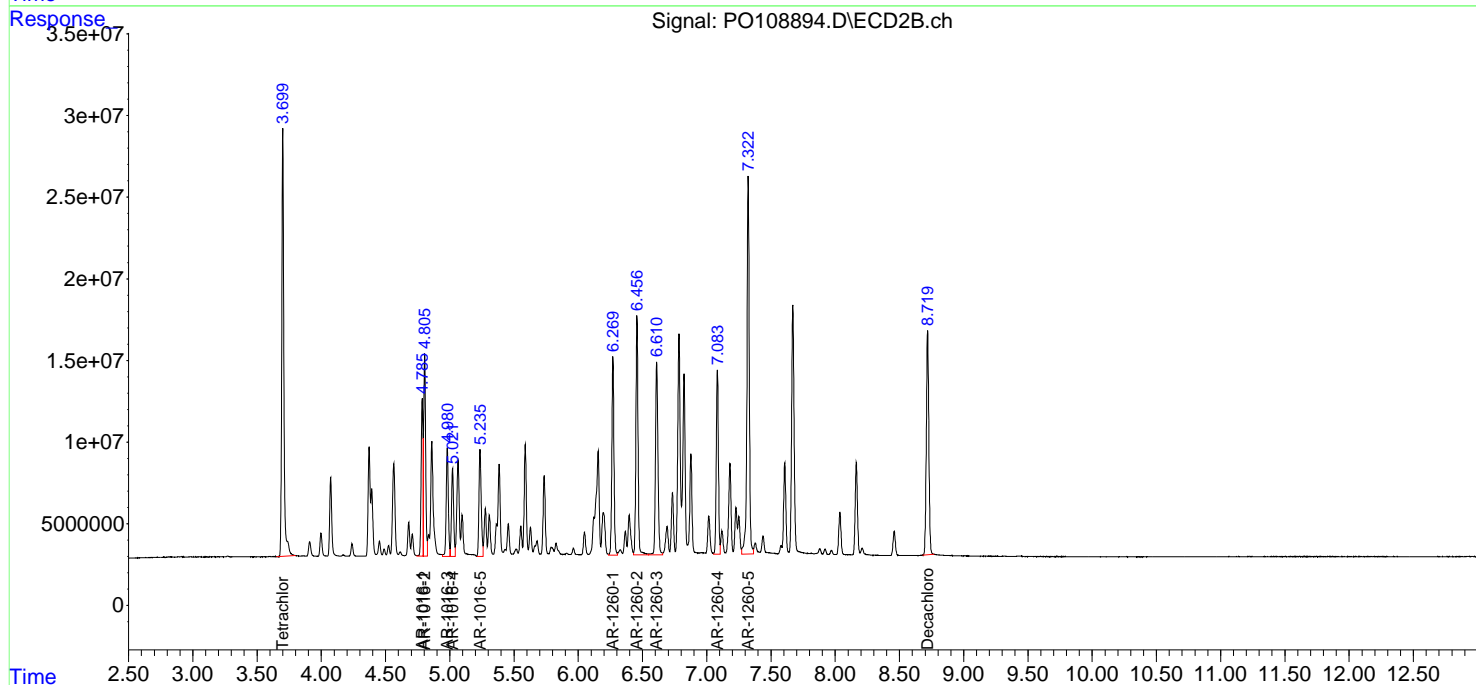
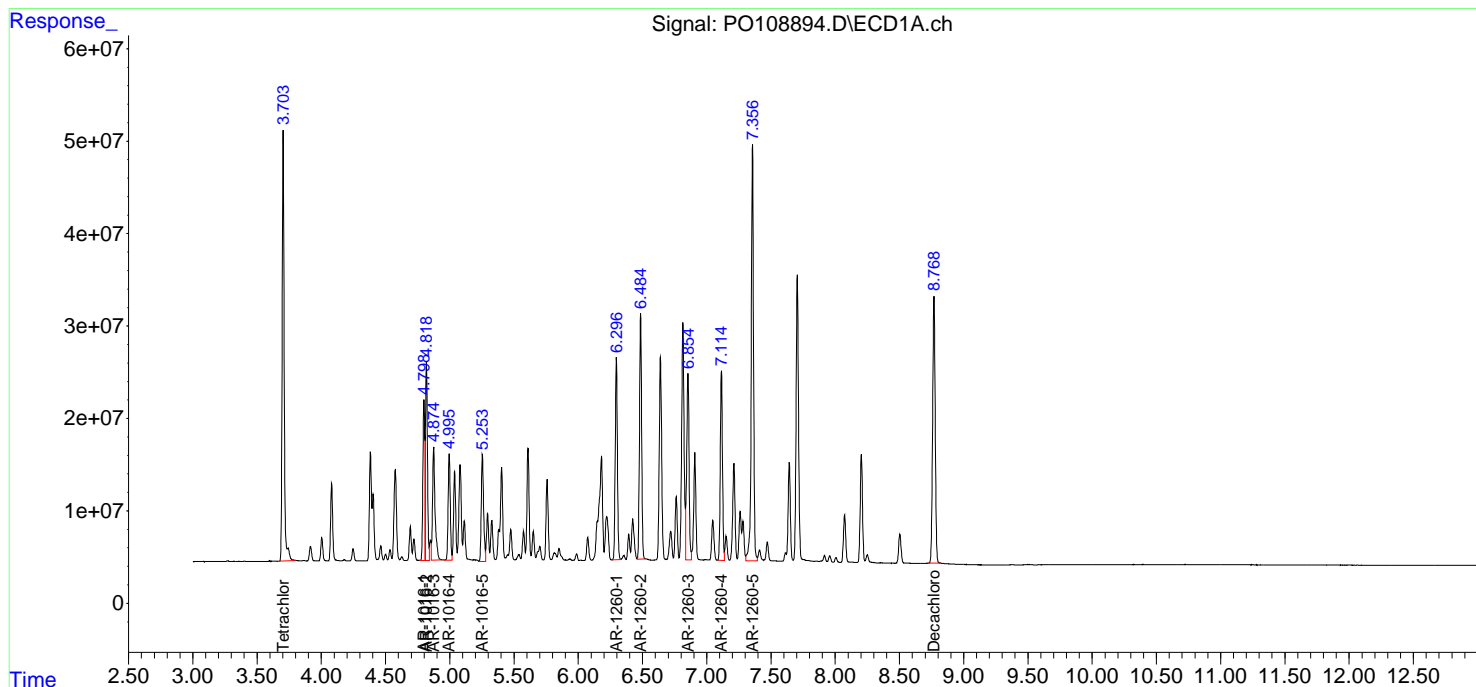
APPROVED

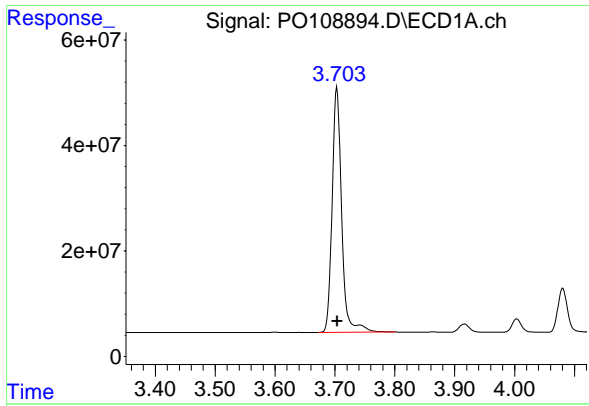
Reviewed By :Yogesh Patel 01/03/2025

Supervised By :Ankita Jodhani 01/03/2025

Integration File signal 1: autoint1.e  
 Integration File signal 2: autoint2.e  
 Quant Time: Jan 03 10:46:11 2025  
 Quant Method : Z:\pestpcbsrv\HPCHEM1\ECD\_O\methods\PO010225.M  
 Quant Title : GC EXTRACTABLES  
 QLast Update : Fri Jan 03 04:48:29 2025  
 Response via : Initial Calibration  
 Integrator: ChemStation

Volume Inj. : 2 µl  
 Signal #1 Phase : ZB-MR1 Signal #2 Phase: ZB-MR2  
 Signal #1 Info : 30Mx0.32mmx 0.50µm Signal #2 Info : 30M x 0.32mm x 0.25µm





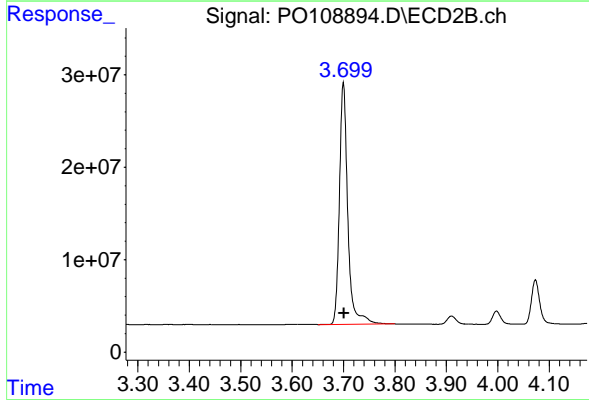
#1 Tetrachloro-m-xylene

R.T.: 3.703 min  
 Delta R.T.: 0.000 min  
 Response: 513872257  
 Conc: 55.48 ng/ml

Instrument :  
 ECD\_O  
 Client Sample Id :  
 ICVPO010225

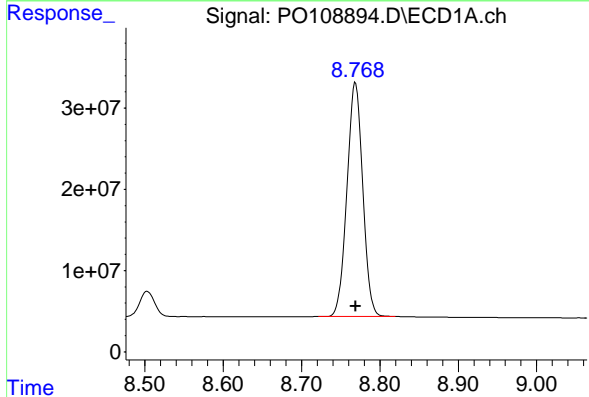
Manual Integrations  
 APPROVED

Reviewed By :Yogesh Patel 01/03/2025  
 Supervised By :Ankita Jodhani 01/03/2025



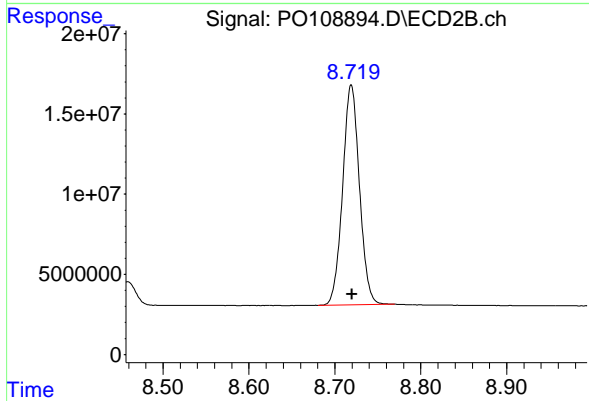
#1 Tetrachloro-m-xylene

R.T.: 3.700 min  
 Delta R.T.: -0.001 min  
 Response: 296675962  
 Conc: 53.51 ng/ml



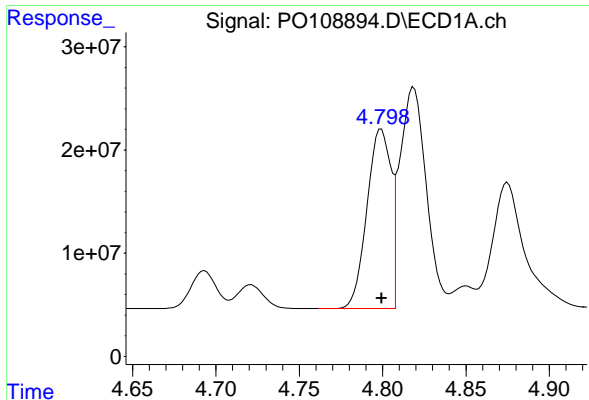
#2 Decachlorobiphenyl

R.T.: 8.769 min  
 Delta R.T.: 0.000 min  
 Response: 403048858  
 Conc: 56.77 ng/ml



#2 Decachlorobiphenyl

R.T.: 8.719 min  
 Delta R.T.: 0.000 min  
 Response: 186514690  
 Conc: 49.70 ng/ml



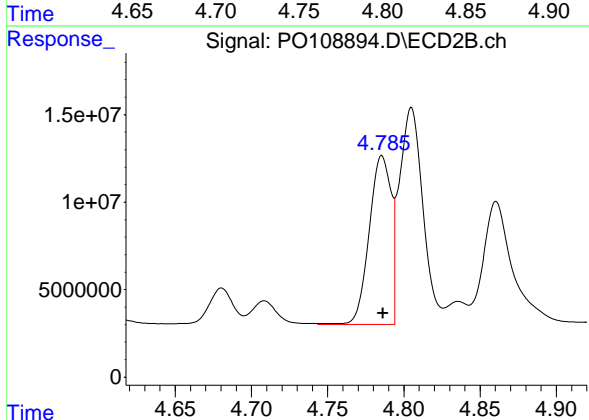
#3 AR-1016-1

R.T.: 4.799 min  
 Delta R.T.: 0.000 min  
 Response: 172700229  
 Conc: 536.84 ng/ml

Instrument :  
 ECD\_O  
 ClientSampleId :  
 ICVPO010225

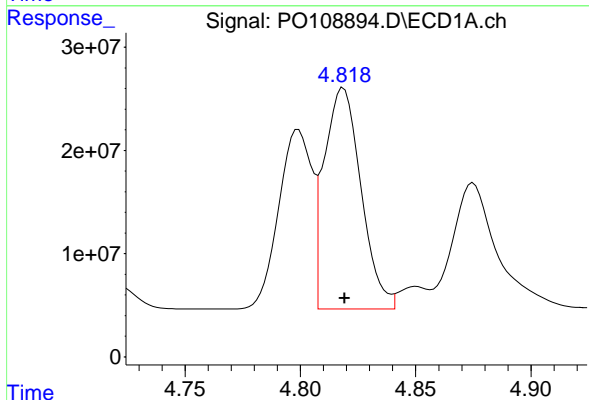
Manual Integrations  
 APPROVED

Reviewed By :Yogesh Patel 01/03/2025  
 Supervised By :Ankita Jodhani 01/03/2025



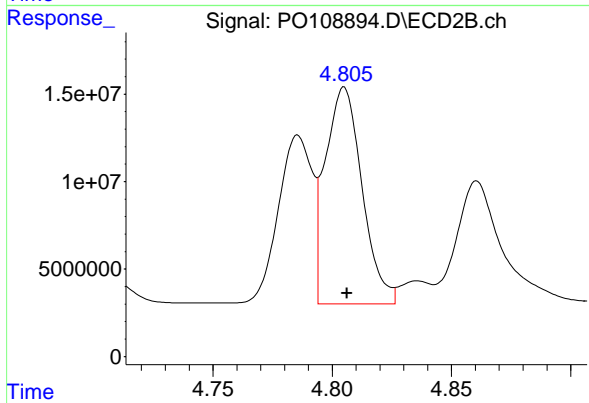
#3 AR-1016-1

R.T.: 4.786 min  
 Delta R.T.: 0.000 min  
 Response: 95748613  
 Conc: 521.54 ng/ml



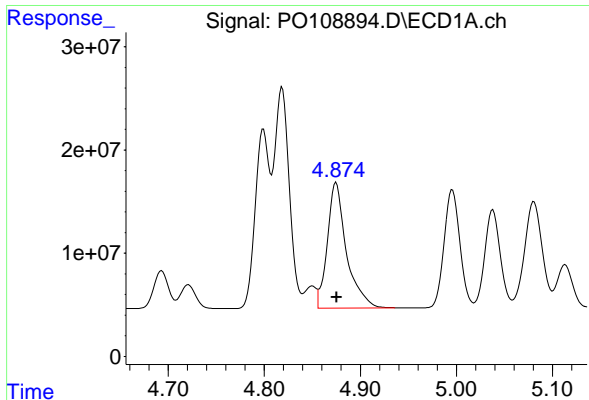
#4 AR-1016-2

R.T.: 4.819 min  
 Delta R.T.: 0.000 min  
 Response: 238024327  
 Conc: 537.71 ng/ml



#4 AR-1016-2

R.T.: 4.805 min  
 Delta R.T.: -0.001 min  
 Response: 133059185  
 Conc: 527.96 ng/ml



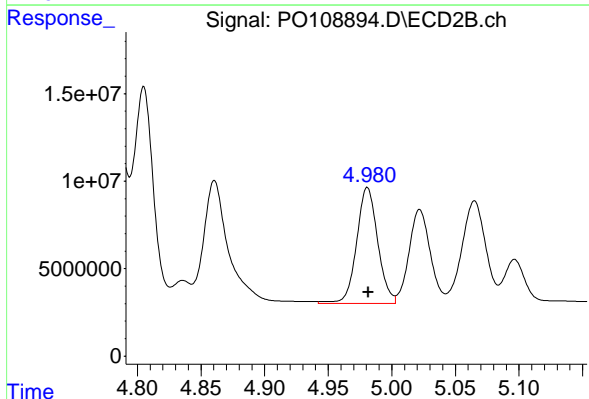
#5 AR-1016-3

R.T.: 4.874 min  
 Delta R.T.: -0.001 min  
 Response: 167108452  
 Conc: 531.08 ng/ml

Instrument :  
 ECD\_O  
 ClientSampleId :  
 ICVPO010225

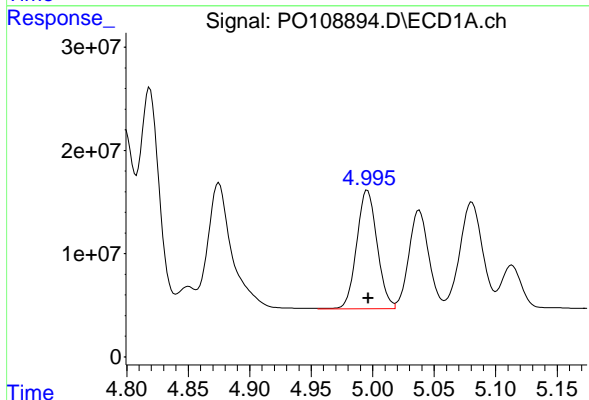
Manual Integrations  
 APPROVED

Reviewed By :Yogesh Patel 01/03/2025  
 Supervised By :Ankita Jodhani 01/03/2025



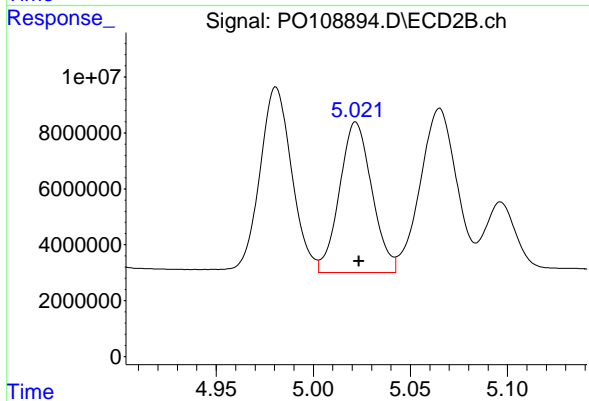
#5 AR-1016-3

R.T.: 4.981 min  
 Delta R.T.: 0.000 min  
 Response: 76678064  
 Conc: 540.50 ng/ml



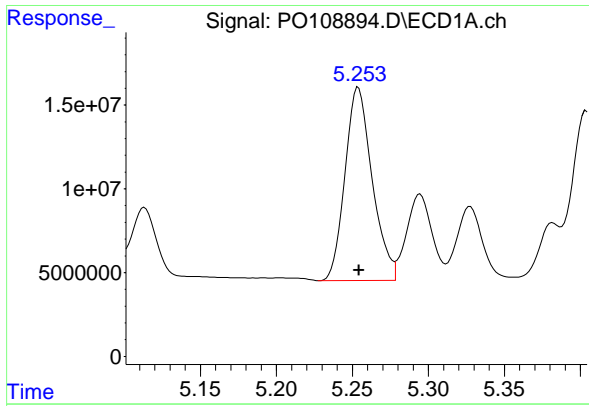
#6 AR-1016-4

R.T.: 4.996 min  
 Delta R.T.: 0.000 min  
 Response: 132868995  
 Conc: 537.43 ng/ml



#6 AR-1016-4

R.T.: 5.022 min  
 Delta R.T.: -0.002 min  
 Response: 62379903  
 Conc: 525.43 ng/ml



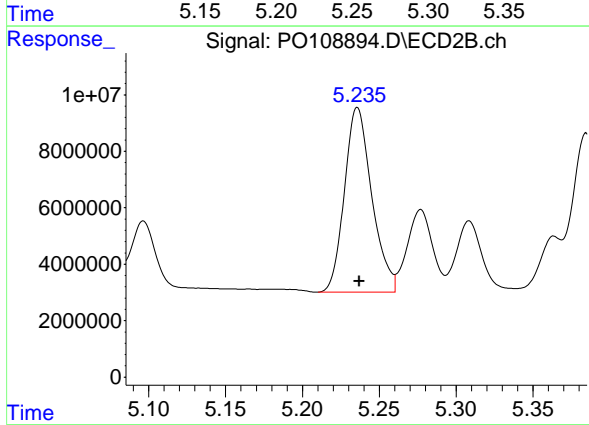
#7 AR-1016-5

R.T.: 5.254 min  
 Delta R.T.: 0.000 min  
 Response: 143621650  
 Conc: 546.42 ng/ml

Instrument :  
 ECD\_O  
 Client Sample Id :  
 ICVPO010225

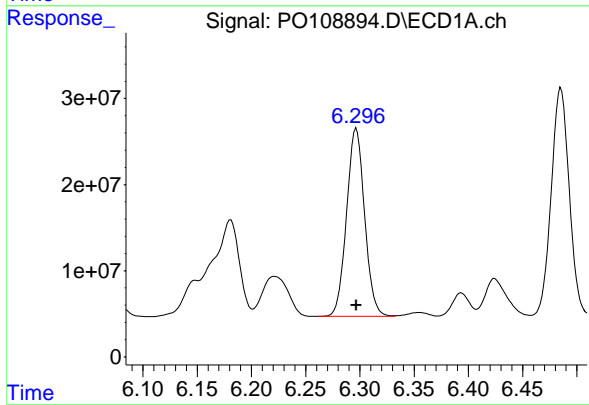
Manual Integrations  
 APPROVED

Reviewed By :Yogesh Patel 01/03/2025  
 Supervised By :Ankita Jodhani 01/03/2025



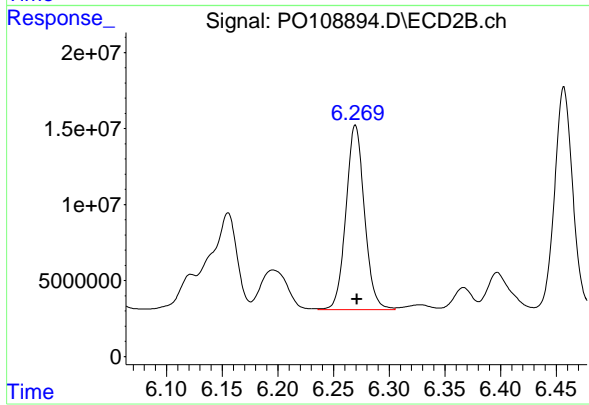
#7 AR-1016-5

R.T.: 5.236 min  
 Delta R.T.: -0.001 min  
 Response: 80833935  
 Conc: 527.21 ng/ml



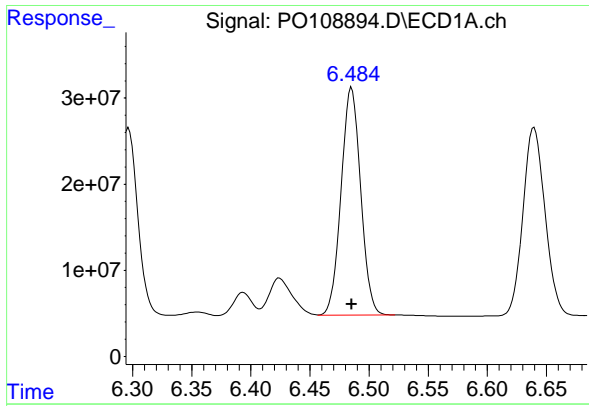
#31 AR-1260-1

R.T.: 6.297 min  
 Delta R.T.: 0.000 min  
 Response: 251501770  
 Conc: 536.68 ng/ml



#31 AR-1260-1

R.T.: 6.270 min  
 Delta R.T.: -0.002 min  
 Response: 140918423  
 Conc: 522.67 ng/ml



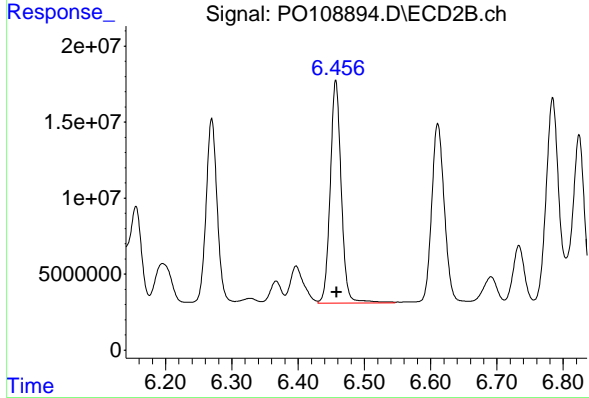
#32 AR-1260-2

R.T.: 6.485 min  
 Delta R.T.: 0.000 min  
 Response: 304274951  
 Conc: 533.31 ng/ml

Instrument :  
 ECD\_O  
 ClientSampleId :  
 ICVPO010225

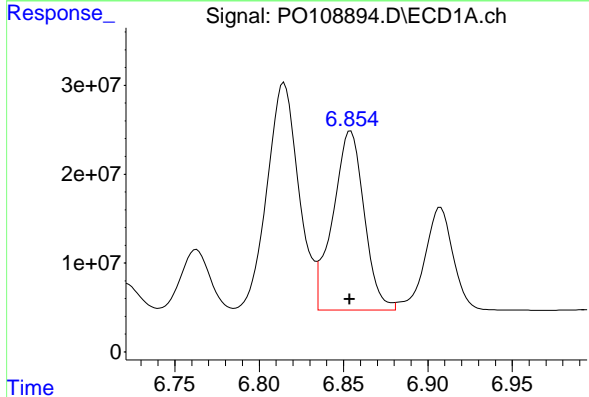
Manual Integrations  
 APPROVED

Reviewed By :Yogesh Patel 01/03/2025  
 Supervised By :Ankita Jodhani 01/03/2025



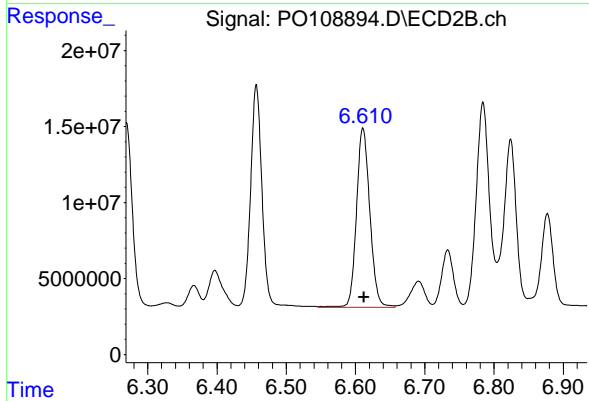
#32 AR-1260-2

R.T.: 6.457 min  
 Delta R.T.: -0.001 min  
 Response: 169494900  
 Conc: 522.59 ng/ml



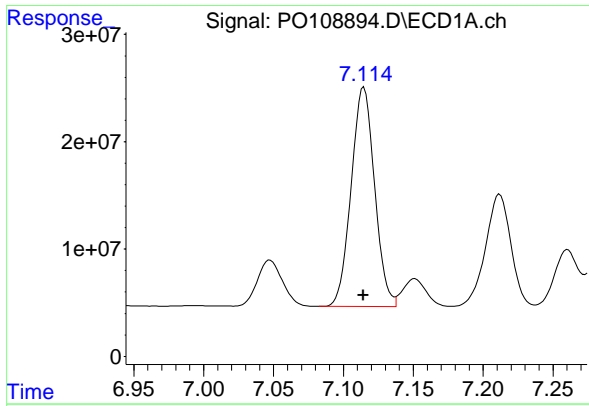
#33 AR-1260-3

R.T.: 6.854 min  
 Delta R.T.: 0.000 min  
 Response: 260333244  
 Conc: 542.22 ng/ml



#33 AR-1260-3

R.T.: 6.611 min  
 Delta R.T.: -0.001 min  
 Response: 158186892  
 Conc: 506.44 ng/ml



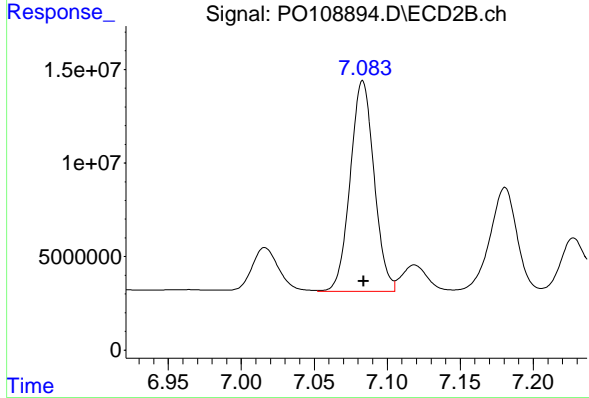
#34 AR-1260-4

R.T.: 7.115 min  
 Delta R.T.: 0.000 min  
 Response: 238586542  
 Conc: 545.62 ng/ml

Instrument :  
 ECD\_O  
 ClientSampleId :  
 ICVPO010225

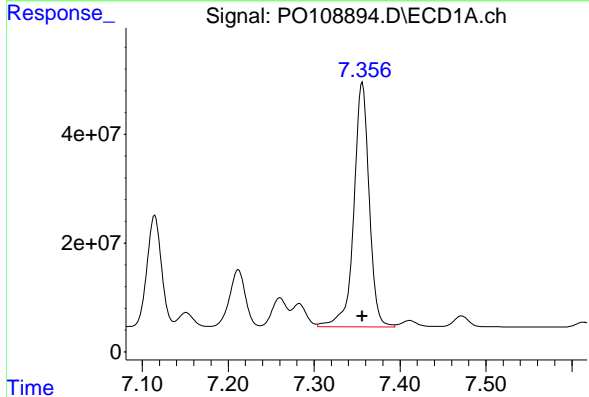
Manual Integrations  
 APPROVED

Reviewed By :Yogesh Patel 01/03/2025  
 Supervised By :Ankita Jodhani 01/03/2025



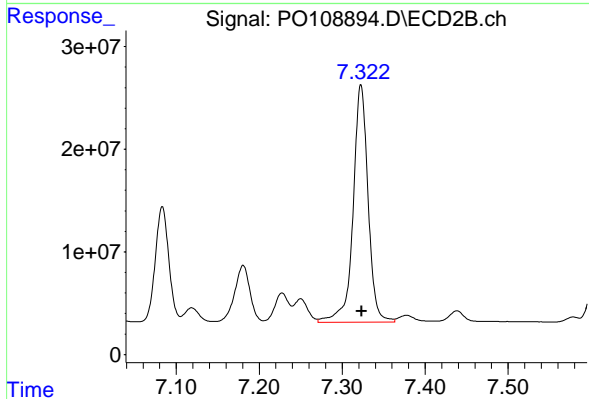
#34 AR-1260-4

R.T.: 7.083 min  
 Delta R.T.: 0.000 min  
 Response: 128263545  
 Conc: 514.63 ng/ml



#35 AR-1260-5

R.T.: 7.356 min  
 Delta R.T.: 0.000 min  
 Response: 558586639  
 Conc: 554.70 ng/ml



#35 AR-1260-5

R.T.: 7.323 min  
 Delta R.T.: 0.000 min  
 Response: 291417084  
 Conc: 515.03 ng/ml