

Data Path : Z:\pestpcbsrv\HPCHEM1\ECD_O\Data\P0010324\
 Data File : P0100885.D
 Signal(s) : Signal #1: ECD1A.ch Signal #2: ECD2B.ch
 Acq On : 03 Jan 2024 20:49
 Operator : YP/AJ
 Sample : I.BLK
 Misc :
 ALS Vial : 2 Sample Multiplier: 1

Instrument :
 ECD_O
 ClientSampleId :
 I.BLK

Integration File signal 1: autoint1.e
 Integration File signal 2: autoint2.e
 Quant Time: Jan 03 23:31:06 2024
 Quant Method : Z:\pestpcbsrv\HPCHEM1\ECD_O\methods\P0122023.M
 Quant Title : GC EXTRACTABLES
 QLast Update : Thu Dec 21 04:28:19 2023
 Response via : Initial Calibration
 Integrator: ChemStation

Volume Inj. : 2 µl
 Signal #1 Phase : ZB-MR2 Signal #2 Phase: ZB-MR2
 Signal #1 Info : 30Mx0.32mmx 0.50µ Signal #2 Info : 30M x 0.32mm x 0.25µm

Compound	RT#1	RT#2	Resp#1	Resp#2	ng/ml	ng/ml

System Monitoring Compounds						
1) SA Tetrachlo...	4.347	3.643	54864660	35602985	17.583	17.423
2) SA Decachlor...	10.089	8.703	38631861	30278261	18.492	20.060
Target Compounds						
3) L1 AR-1016-1	5.518	4.744	99778	568369	1.163	9.184 #
4) L1 AR-1016-2	5.541	4.744	66877	568369	0.524	6.446 #
5) L1 AR-1016-3	5.590	4.940	643079	39997	8.154	0.856 #
6) L1 AR-1016-4	5.703	4.982	64083	342513	1.052	8.346 #
7) L1 AR-1016-5	6.008	5.204	83700	104065	1.367	2.003 #
8) L2 AR-1221-1	4.534	3.868	151998	234415	4.112	9.335 #
9) L2 AR-1221-2	4.655	3.946	1182917	626996	42.595	32.652
10) L2 AR-1221-3	4.732	3.985f	389765	432922	4.670	7.357 #
11) L3 AR-1232-1	4.732	3.985f	389765	432922	5.846	9.156 #
12) L3 AR-1232-2	5.253	4.744	46128	568369	1.316	13.627 #
13) L3 AR-1232-3	5.541	4.940	66877	39997	1.121	1.864 #
14) L3 AR-1232-4	5.703	5.025	64083	25260	2.337	1.189 #
15) L3 AR-1232-5	5.792	5.204	395527	104065	16.451	4.762 #
16) L4 AR-1242-1	5.518	4.744	99778	568369	1.415	10.882 #
17) L4 AR-1242-2	5.541	4.744	66877	568369	0.637	7.842 #
18) L4 AR-1242-3	5.590	4.940	643079	39997	9.893	1.044 #
19) L4 AR-1242-4	5.703	5.025	64083	25260	1.280	0.606 #
20) L4 AR-1242-5	6.444	5.546	723581	74305	13.980	1.619 #
21) L5 AR-1248-1	5.518	4.744	99778	568369	1.819	14.213 #
22) L5 AR-1248-2	5.792	4.982	395527	342513	4.580	5.693
23) L5 AR-1248-3	6.008	5.025	83700	25260	0.954	0.404 #
24) L5 AR-1248-4	6.392	5.204	402828	104065	4.481	1.445 #
25) L5 AR-1248-5	6.444	5.591	723581	32719	8.061	0.530 #
26) L6 AR-1254-1	6.360	5.546	112354	74305	1.069	0.724 #
27) L6 AR-1254-2	6.604	5.702	316492	96164	2.143	1.047 #
28) L6 AR-1254-3	6.962	6.112	179199	48268	1.280	0.357 #
29) L6 AR-1254-4	7.181f	6.338	1477973	27445	17.385	0.380 #
30) L6 AR-1254-5	7.619f	6.759	17816618	291854	150.572	2.533 #
31) L7 AR-1260-1	7.181f	6.215	1477973	66281	10.788	0.696 #
32) L7 AR-1260-2	7.374	6.415	31277	194900	0.249	1.813 #
33) L7 AR-1260-3	7.749	6.594	167460	51952	1.729	0.507 #
35) L7 AR-1260-5	8.310	7.291	1713370	107294	8.117	0.594 #
36) L8 AR-1262-1	7.619f	6.759	17816618	291854	178.345	4.679 #
37) L8 AR-1262-2	8.310	7.030	1713370	25834	7.220	0.229 #
38) L8 AR-1262-3	8.591	7.587	486153	82870	2.994	1.076 #
39) L8 AR-1262-4	8.674	7.646	308105	404989	2.390	2.741
40) L8 AR-1262-5	9.337	8.131	76951	296680	0.965	4.639 #
41) L9 AR-1268-1	8.591	7.587	486153	82870	1.721	0.374 #
42) L9 AR-1268-2	8.704	7.646	145296	404989	0.575	2.002 #

Data Path : Z:\pestpcbsrv\HPCHEM1\ECD_O\Data\P0010324\
 Data File : P0100885.D
 Signal(s) : Signal #1: ECD1A.ch Signal #2: ECD2B.ch
 Acq On : 03 Jan 2024 20:49
 Operator : YP/AJ
 Sample : I.BLK
 Misc :
 ALS Vial : 2 Sample Multiplier: 1

Instrument :
 ECD_O
 ClientSampleId :
 I.BLK

Integration File signal 1: autoint1.e
 Integration File signal 2: autoint2.e
 Quant Time: Jan 03 23:31:06 2024
 Quant Method : Z:\pestpcbsrv\HPCHEM1\ECD_O\methods\P0122023.M
 Quant Title : GC EXTRACTABLES
 QLast Update : Thu Dec 21 04:28:19 2023
 Response via : Initial Calibration
 Integrator: ChemStation

Volume Inj. : 2 µl
 Signal #1 Phase : ZB-MR1 Signal #2 Phase: ZB-MR2
 Signal #1 Info : 30Mx0.32mmx 0.50µ Signal #2 Info : 30M x 0.32mm x 0.25µm

	Compound	RT#1	RT#2	Resp#1	Resp#2	ng/ml	ng/ml
43)	L9 AR-1268-3	8.926	7.855	97399	324675	0.427	1.721 #
44)	L9 AR-1268-4	9.337	8.131	76951	296680	0.983	4.419 #
45)	L9 AR-1268-5	9.750	8.442	213958	494313	0.298	0.953 #

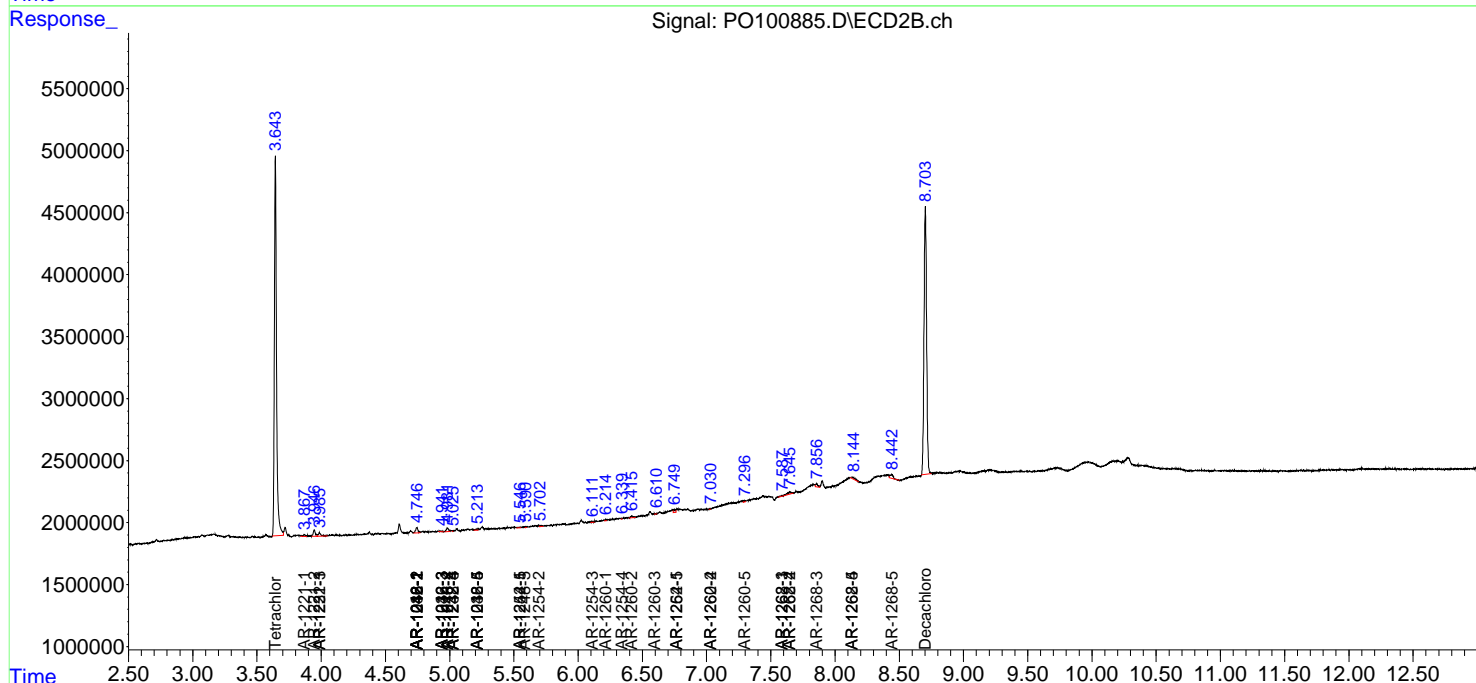
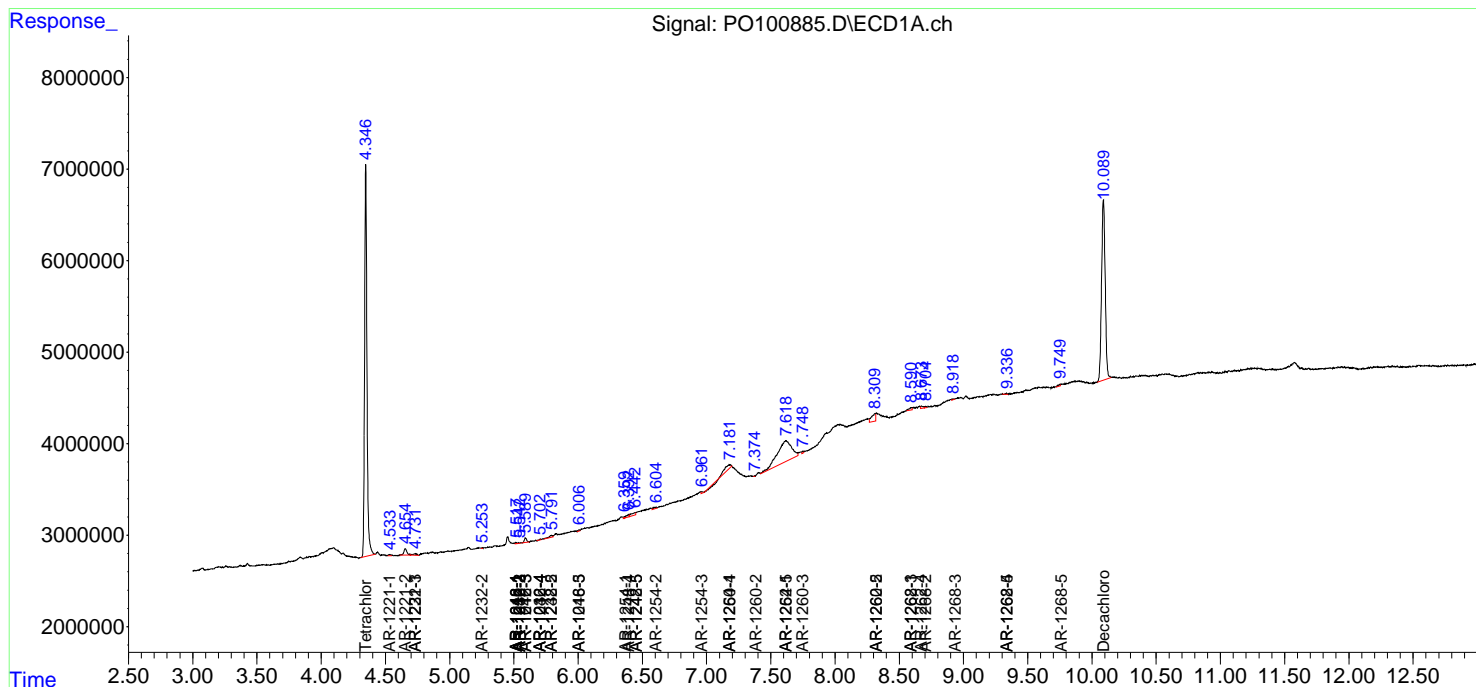
(f)=RT Delta > 1/2 Window (#)=Amounts differ by > 25% (m)=manual int.

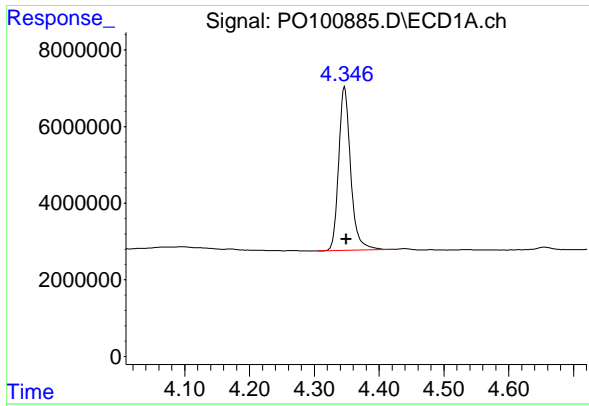
Data Path : Z:\pestpcbsrv\HPCHEM1\ECD_O\Data\PO010324\
 Data File : PO100885.D
 Signal(s) : Signal #1: ECD1A.ch Signal #2: ECD2B.ch
 Acq On : 03 Jan 2024 20:49
 Operator : YP/AJ
 Sample : I.BLK
 Misc :
 ALS Vial : 2 Sample Multiplier: 1

Instrument :
 ECD_O
 ClientSampleId :
 I.BLK

Integration File signal 1: autoint1.e
 Integration File signal 2: autoint2.e
 Quant Time: Jan 03 23:31:06 2024
 Quant Method : Z:\pestpcbsrv\HPCHEM1\ECD_O\methods\PO122023.M
 Quant Title : GC EXTRACTABLES
 QLast Update : Thu Dec 21 04:28:19 2023
 Response via : Initial Calibration
 Integrator: ChemStation

Volume Inj. : 2 µl
 Signal #1 Phase : ZB-MR1 Signal #2 Phase: ZB-MR2
 Signal #1 Info : 30Mx0.32mmx 0.50µ Signal #2 Info : 30M x 0.32mm x 0.25µm

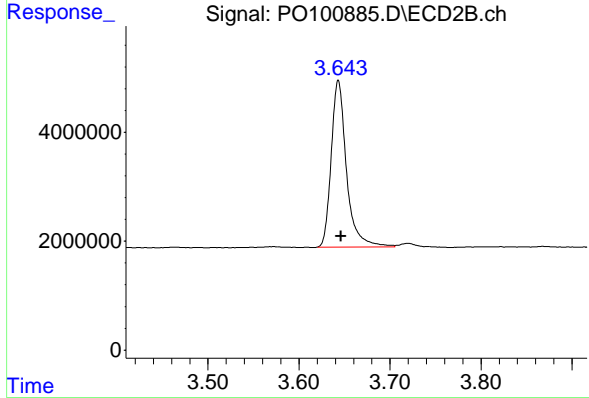




#1 Tetrachloro-m-xylene

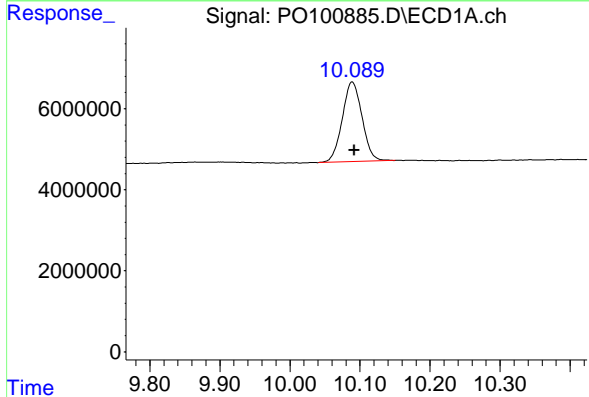
R.T.: 4.347 min
 Delta R.T.: -0.002 min
 Response: 54864660
 Conc: 17.58 ng/ml

Instrument :
 ECD_O
 ClientSampleId :
 I.BLK



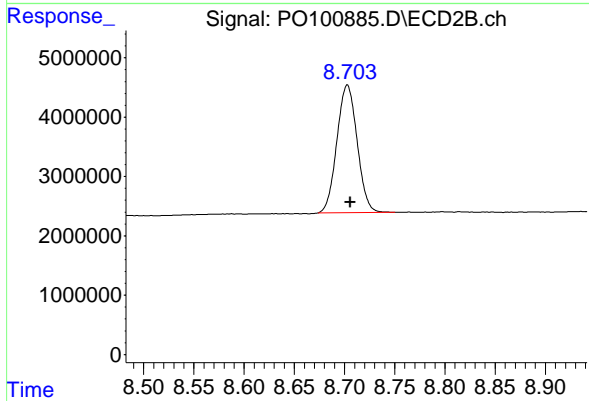
#1 Tetrachloro-m-xylene

R.T.: 3.643 min
 Delta R.T.: -0.003 min
 Response: 35602985
 Conc: 17.42 ng/ml



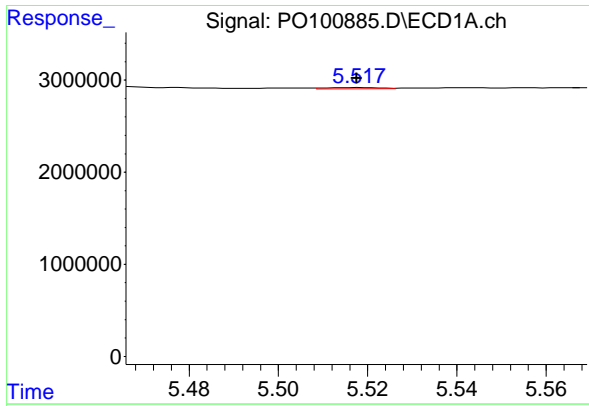
#2 Decachlorobiphenyl

R.T.: 10.089 min
 Delta R.T.: -0.003 min
 Response: 38631861
 Conc: 18.49 ng/ml



#2 Decachlorobiphenyl

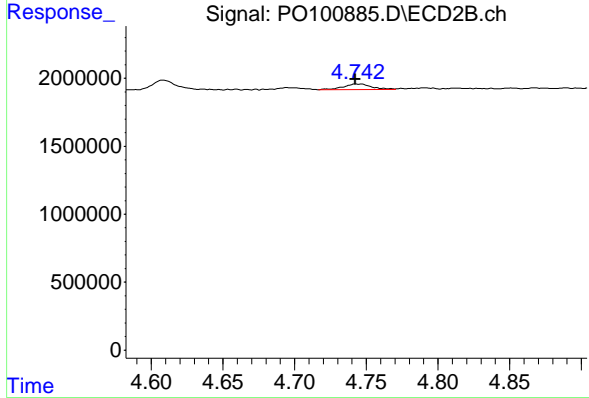
R.T.: 8.703 min
 Delta R.T.: -0.003 min
 Response: 30278261
 Conc: 20.06 ng/ml



#3 AR-1016-1

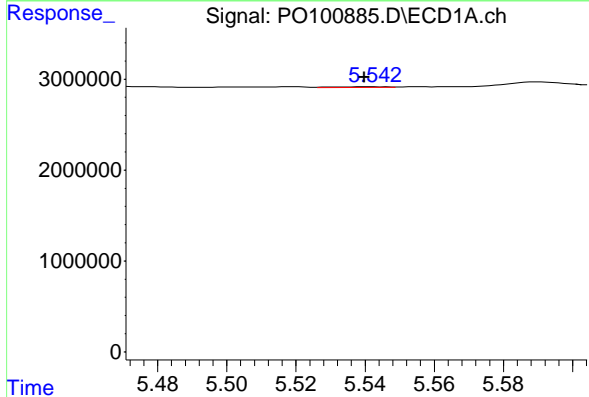
R.T.: 5.518 min
 Delta R.T.: 0.000 min
 Response: 99778
 Conc: 1.16 ng/ml

Instrument :
 ECD_O
 ClientSampleId :
 I.BLK



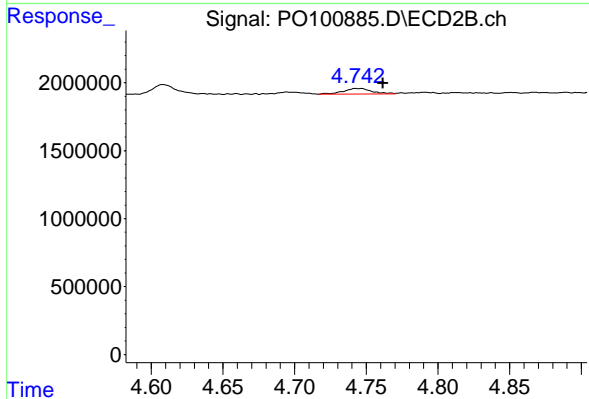
#3 AR-1016-1

R.T.: 4.744 min
 Delta R.T.: 0.002 min
 Response: 568369
 Conc: 9.18 ng/ml



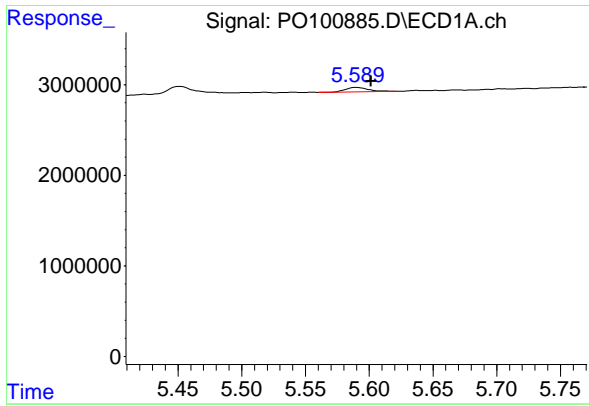
#4 AR-1016-2

R.T.: 5.541 min
 Delta R.T.: 0.001 min
 Response: 66877
 Conc: 0.52 ng/ml



#4 AR-1016-2

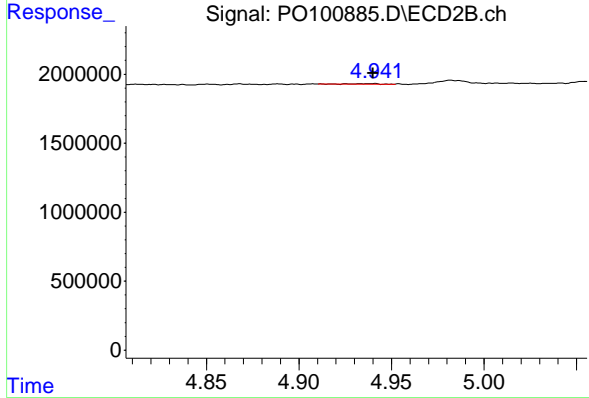
R.T.: 4.744 min
 Delta R.T.: -0.018 min
 Response: 568369
 Conc: 6.45 ng/ml



#5 AR-1016-3

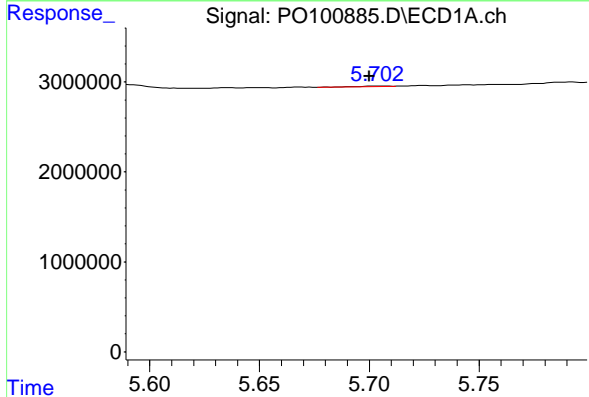
R.T.: 5.590 min
 Delta R.T.: -0.011 min
 Response: 643079
 Conc: 8.15 ng/ml

Instrument :
 ECD_O
 ClientSampleId :
 I.BLK



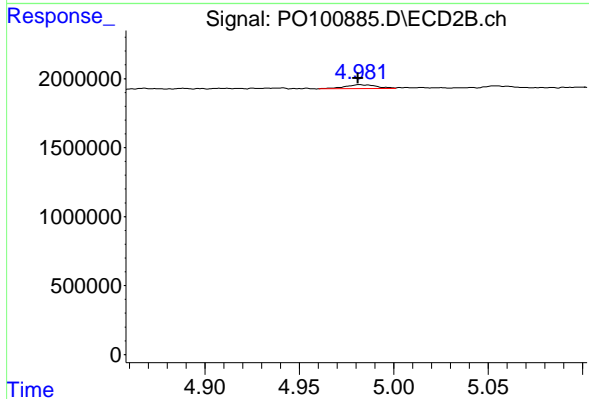
#5 AR-1016-3

R.T.: 4.940 min
 Delta R.T.: 0.000 min
 Response: 39997
 Conc: 0.86 ng/ml



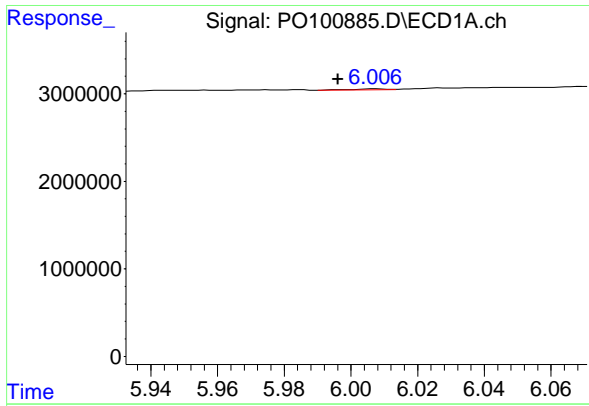
#6 AR-1016-4

R.T.: 5.703 min
 Delta R.T.: 0.003 min
 Response: 64083
 Conc: 1.05 ng/ml



#6 AR-1016-4

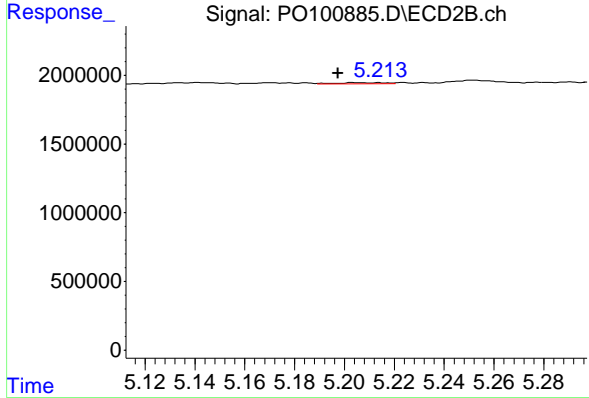
R.T.: 4.982 min
 Delta R.T.: 0.000 min
 Response: 342513
 Conc: 8.35 ng/ml



#7 AR-1016-5

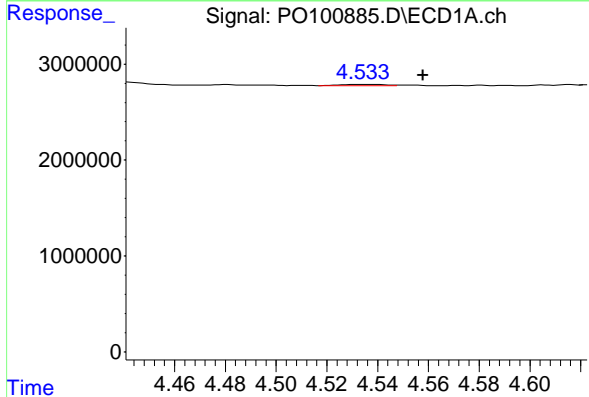
R.T.: 6.008 min
 Delta R.T.: 0.012 min
 Response: 83700
 Conc: 1.37 ng/ml

Instrument :
 ECD_O
 ClientSampleId :
 I.BLK



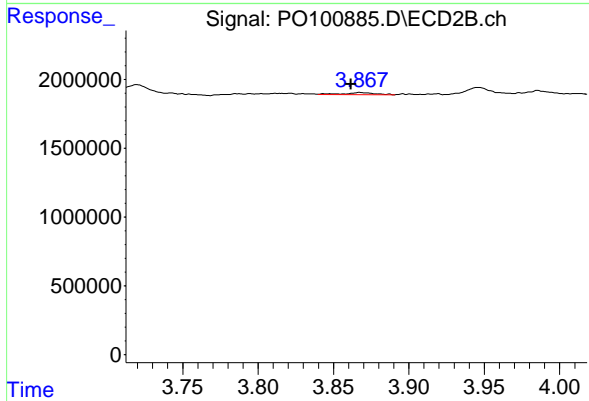
#7 AR-1016-5

R.T.: 5.204 min
 Delta R.T.: 0.007 min
 Response: 104065
 Conc: 2.00 ng/ml



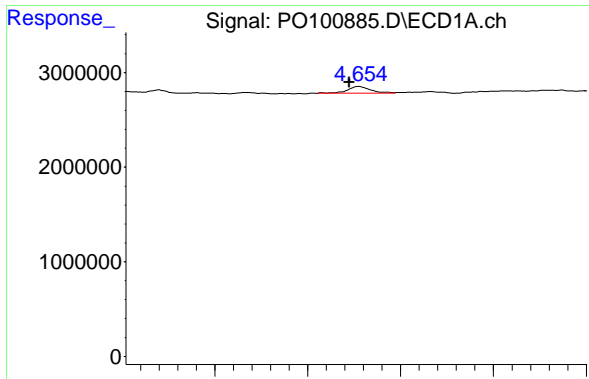
#8 AR-1221-1

R.T.: 4.534 min
 Delta R.T.: -0.024 min
 Response: 151998
 Conc: 4.11 ng/ml



#8 AR-1221-1

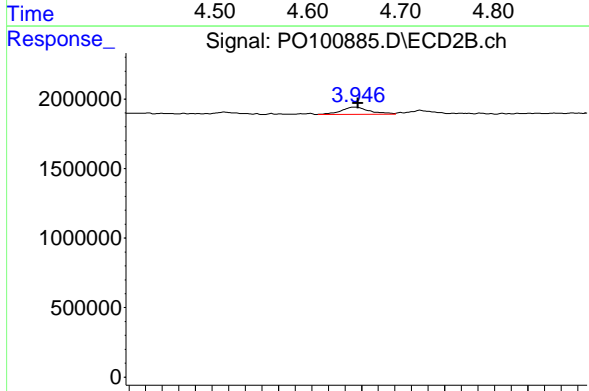
R.T.: 3.868 min
 Delta R.T.: 0.006 min
 Response: 234415
 Conc: 9.33 ng/ml



#9 AR-1221-2

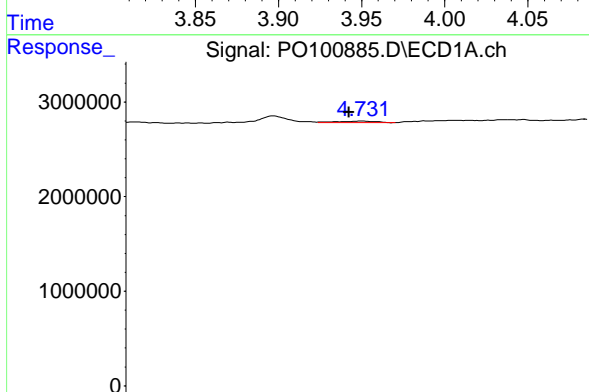
R.T.: 4.655 min
 Delta R.T.: 0.010 min
 Response: 1182917
 Conc: 42.59 ng/ml

Instrument :
 ECD_O
 ClientSampleId :
 I.BLK



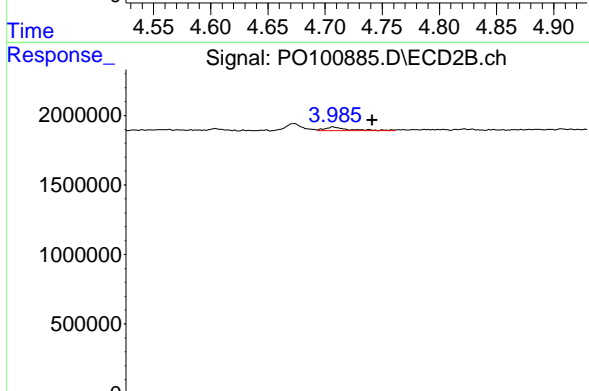
#9 AR-1221-2

R.T.: 3.946 min
 Delta R.T.: -0.002 min
 Response: 626996
 Conc: 32.65 ng/ml



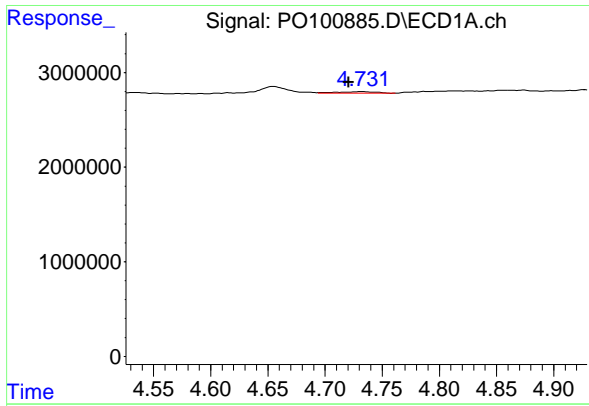
#10 AR-1221-3

R.T.: 4.732 min
 Delta R.T.: 0.011 min
 Response: 389765
 Conc: 4.67 ng/ml



#10 AR-1221-3

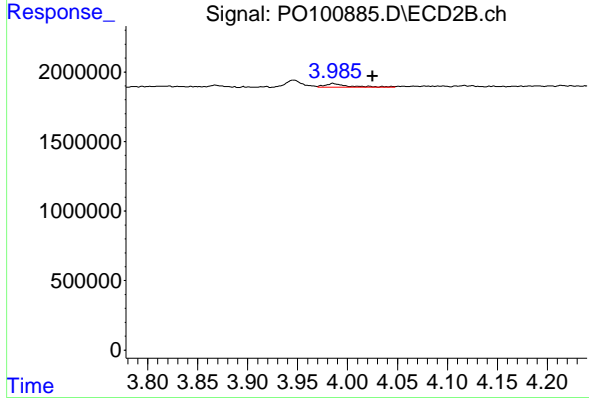
R.T.: 3.985 min
 Delta R.T.: -0.039 min
 Response: 432922
 Conc: 7.36 ng/ml



#11 AR-1232-1

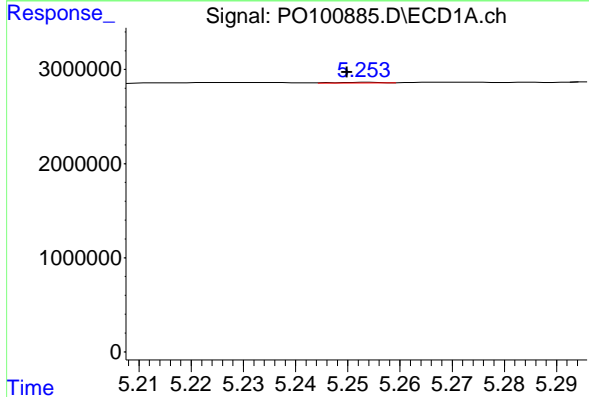
R.T.: 4.732 min
 Delta R.T.: 0.011 min
 Response: 389765
 Conc: 5.85 ng/ml

Instrument :
 ECD_O
 ClientSampleId :
 I.BLK



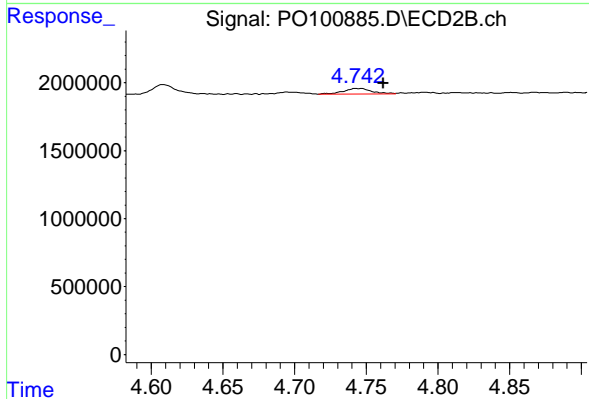
#11 AR-1232-1

R.T.: 3.985 min
 Delta R.T.: -0.040 min
 Response: 432922
 Conc: 9.16 ng/ml



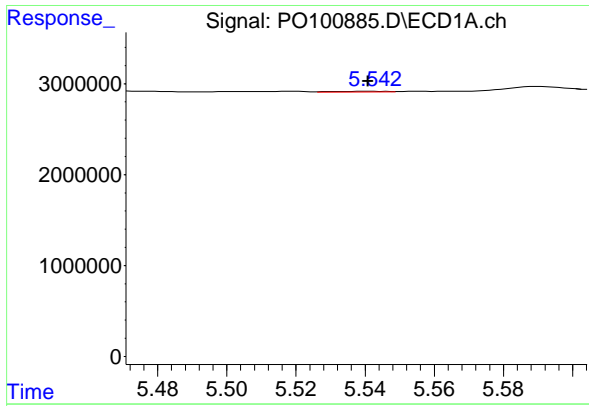
#12 AR-1232-2

R.T.: 5.253 min
 Delta R.T.: 0.003 min
 Response: 46128
 Conc: 1.32 ng/ml



#12 AR-1232-2

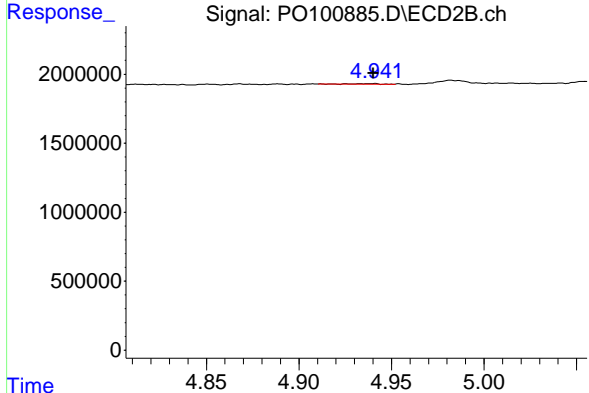
R.T.: 4.744 min
 Delta R.T.: -0.018 min
 Response: 568369
 Conc: 13.63 ng/ml



#13 AR-1232-3

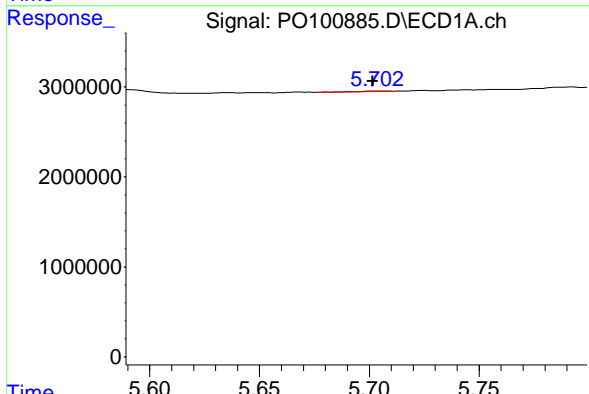
R.T.: 5.541 min
 Delta R.T.: 0.000 min
 Response: 66877
 Conc: 1.12 ng/ml

Instrument :
 ECD_O
 ClientSampleId :
 I.BLK



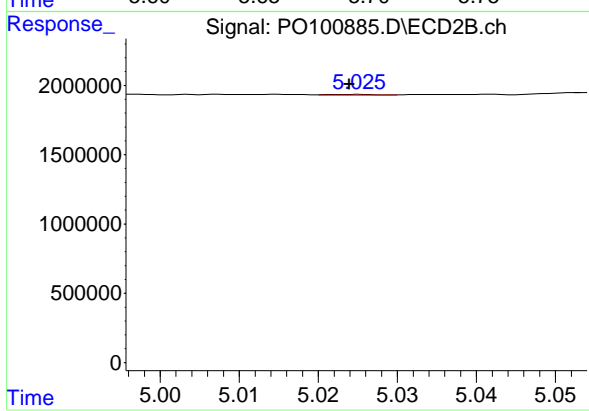
#13 AR-1232-3

R.T.: 4.940 min
 Delta R.T.: 0.000 min
 Response: 39997
 Conc: 1.86 ng/ml



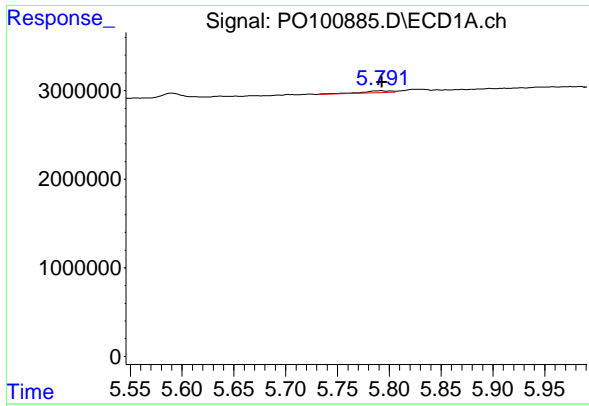
#14 AR-1232-4

R.T.: 5.703 min
 Delta R.T.: 0.002 min
 Response: 64083
 Conc: 2.34 ng/ml



#14 AR-1232-4

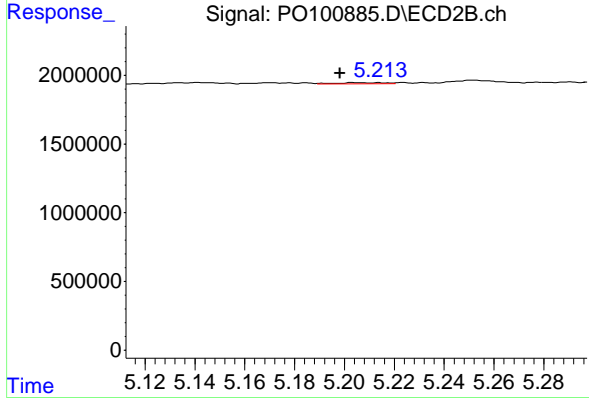
R.T.: 5.025 min
 Delta R.T.: 0.000 min
 Response: 25260
 Conc: 1.19 ng/ml



#15 AR-1232-5

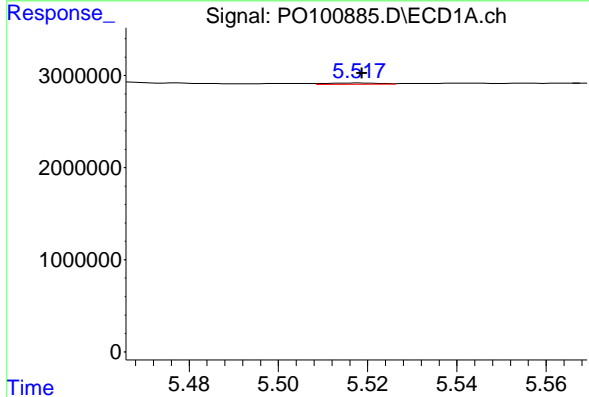
R.T.: 5.792 min
 Delta R.T.: 0.000 min
 Response: 395527
 Conc: 16.45 ng/ml

Instrument :
 ECD_O
 ClientSampleId :
 I.BLK



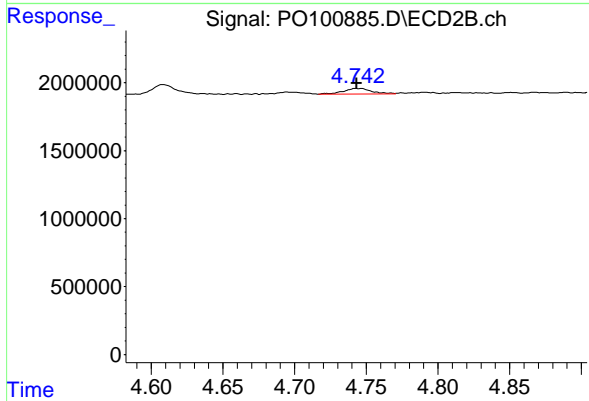
#15 AR-1232-5

R.T.: 5.204 min
 Delta R.T.: 0.006 min
 Response: 104065
 Conc: 4.76 ng/ml



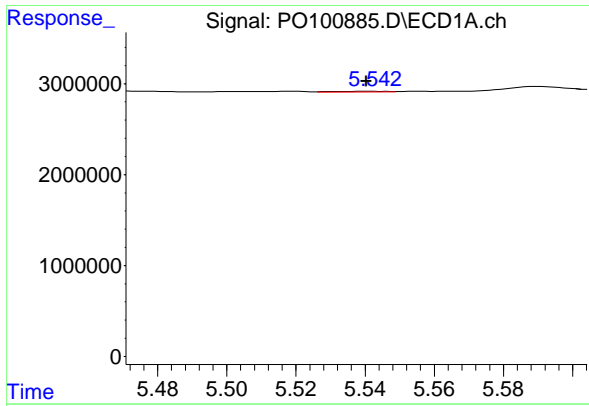
#16 AR-1242-1

R.T.: 5.518 min
 Delta R.T.: 0.000 min
 Response: 99778
 Conc: 1.41 ng/ml



#16 AR-1242-1

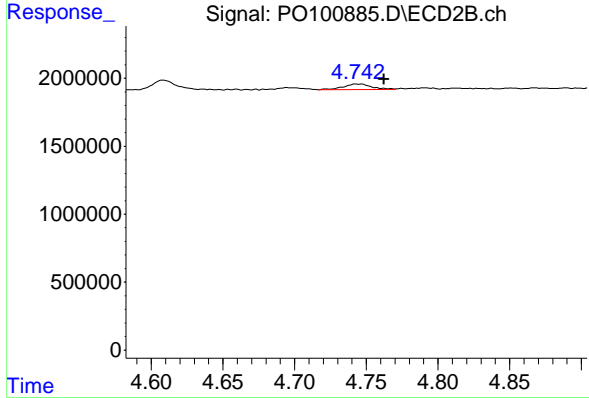
R.T.: 4.744 min
 Delta R.T.: 0.000 min
 Response: 568369
 Conc: 10.88 ng/ml



#17 AR-1242-2

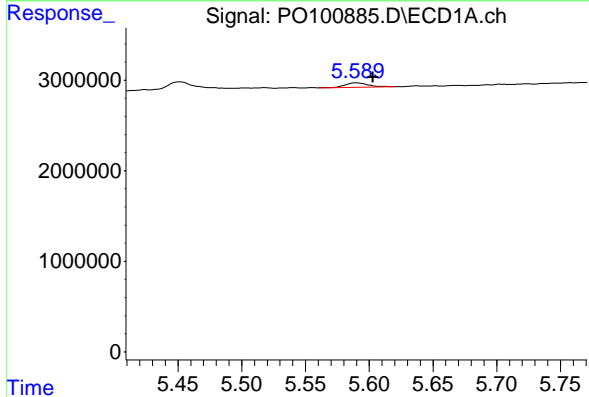
R.T.: 5.541 min
 Delta R.T.: 0.000 min
 Response: 66877
 Conc: 0.64 ng/ml

Instrument :
 ECD_O
 ClientSampleId :
 I.BLK



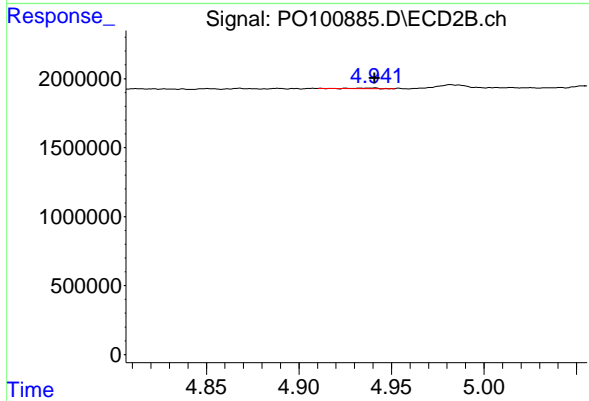
#17 AR-1242-2

R.T.: 4.744 min
 Delta R.T.: -0.018 min
 Response: 568369
 Conc: 7.84 ng/ml



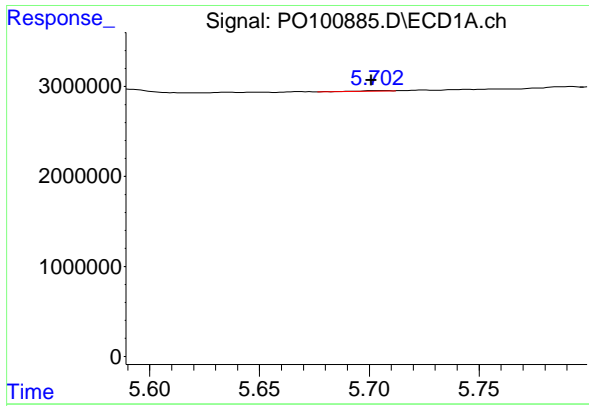
#18 AR-1242-3

R.T.: 5.590 min
 Delta R.T.: -0.013 min
 Response: 643079
 Conc: 9.89 ng/ml



#18 AR-1242-3

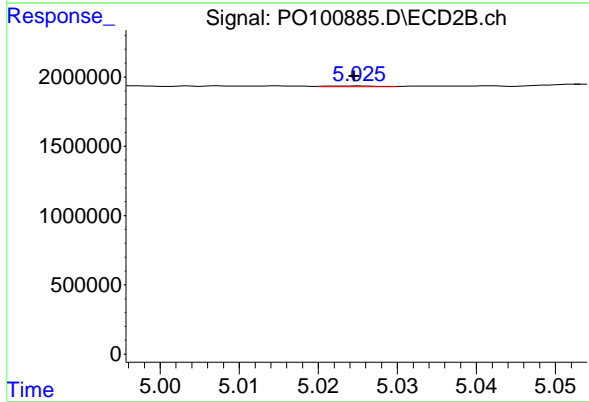
R.T.: 4.940 min
 Delta R.T.: 0.000 min
 Response: 39997
 Conc: 1.04 ng/ml



#19 AR-1242-4

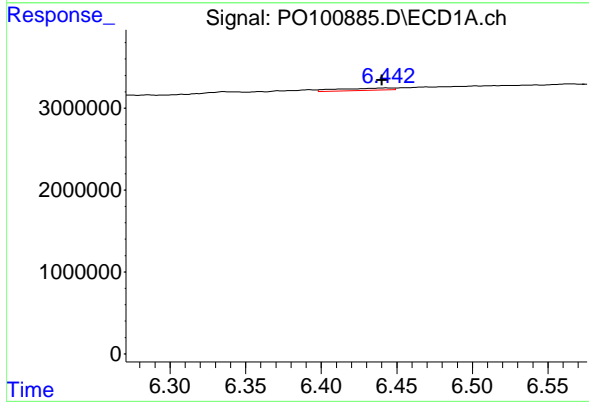
R.T.: 5.703 min
 Delta R.T.: 0.002 min
 Response: 64083
 Conc: 1.28 ng/ml

Instrument :
 ECD_O
 ClientSampleId :
 I.BLK



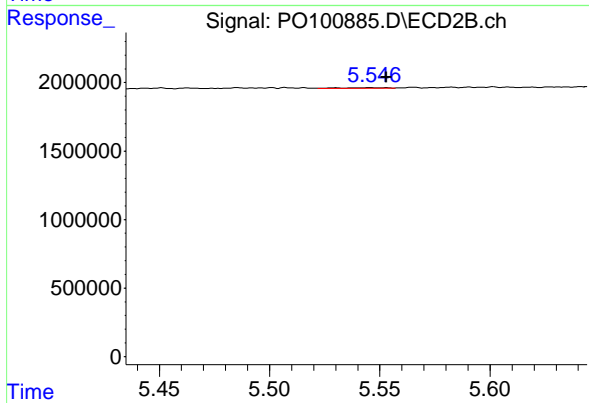
#19 AR-1242-4

R.T.: 5.025 min
 Delta R.T.: 0.000 min
 Response: 25260
 Conc: 0.61 ng/ml



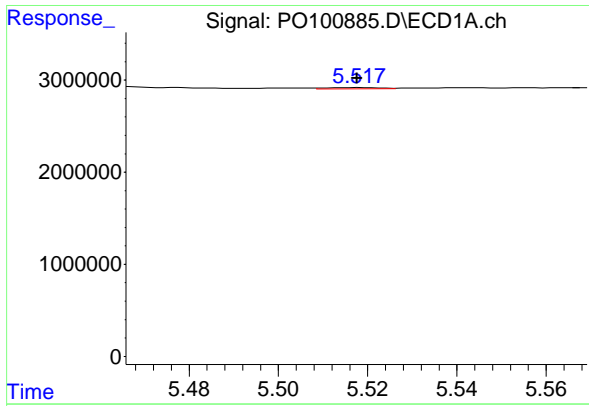
#20 AR-1242-5

R.T.: 6.444 min
 Delta R.T.: 0.003 min
 Response: 723581
 Conc: 13.98 ng/ml



#20 AR-1242-5

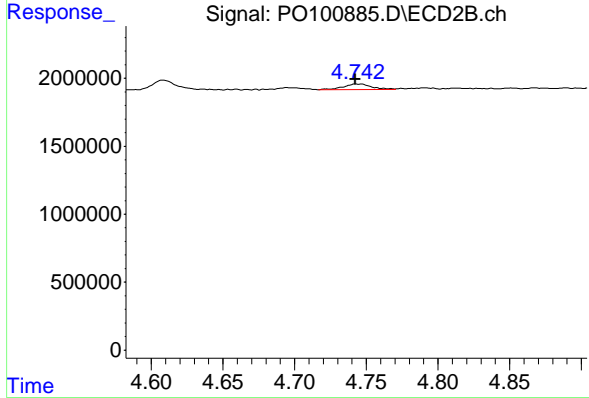
R.T.: 5.546 min
 Delta R.T.: -0.007 min
 Response: 74305
 Conc: 1.62 ng/ml



#21 AR-1248-1

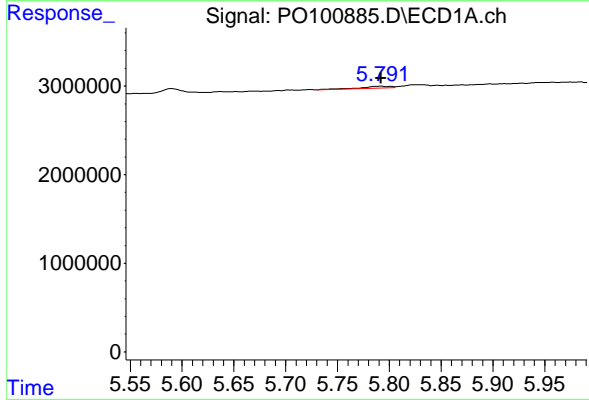
R.T.: 5.518 min
 Delta R.T.: 0.000 min
 Response: 99778
 Conc: 1.82 ng/ml

Instrument :
 ECD_O
 ClientSampleId :
 I.BLK



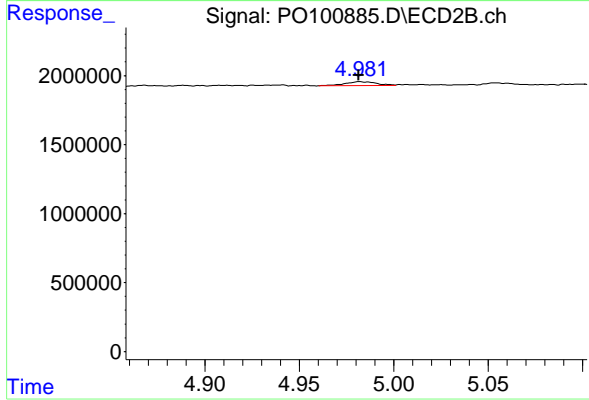
#21 AR-1248-1

R.T.: 4.744 min
 Delta R.T.: 0.002 min
 Response: 568369
 Conc: 14.21 ng/ml



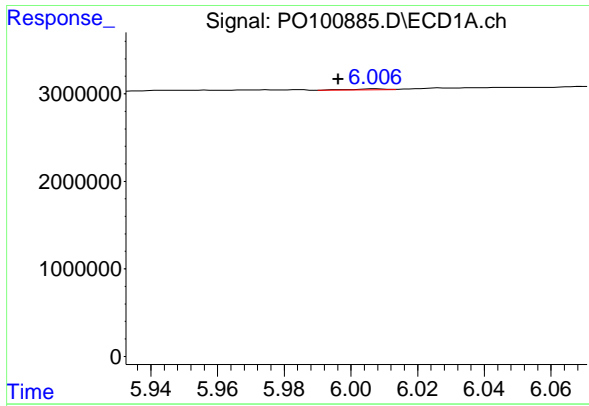
#22 AR-1248-2

R.T.: 5.792 min
 Delta R.T.: 0.000 min
 Response: 395527
 Conc: 4.58 ng/ml



#22 AR-1248-2

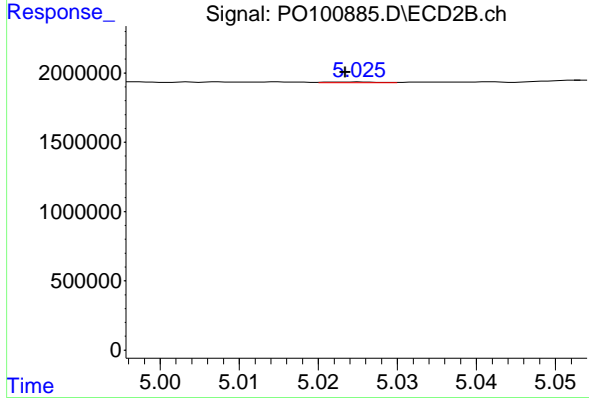
R.T.: 4.982 min
 Delta R.T.: 0.000 min
 Response: 342513
 Conc: 5.69 ng/ml



#23 AR-1248-3

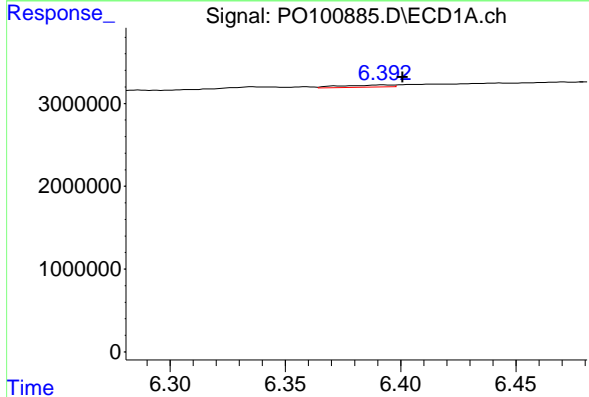
R.T.: 6.008 min
 Delta R.T.: 0.012 min
 Response: 83700
 Conc: 0.95 ng/ml

Instrument :
 ECD_O
 ClientSampleId :
 I.BLK



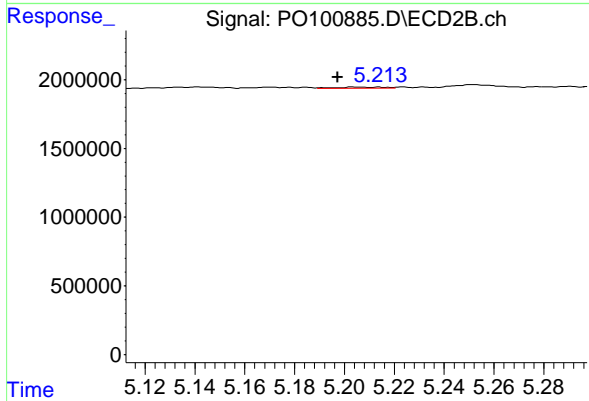
#23 AR-1248-3

R.T.: 5.025 min
 Delta R.T.: 0.001 min
 Response: 25260
 Conc: 0.40 ng/ml



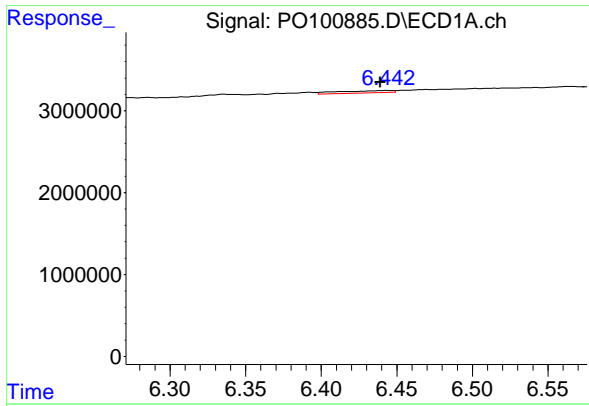
#24 AR-1248-4

R.T.: 6.392 min
 Delta R.T.: -0.009 min
 Response: 402828
 Conc: 4.48 ng/ml



#24 AR-1248-4

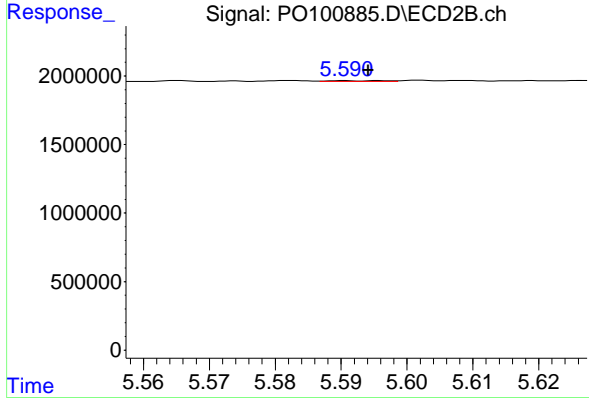
R.T.: 5.204 min
 Delta R.T.: 0.007 min
 Response: 104065
 Conc: 1.44 ng/ml



#25 AR-1248-5

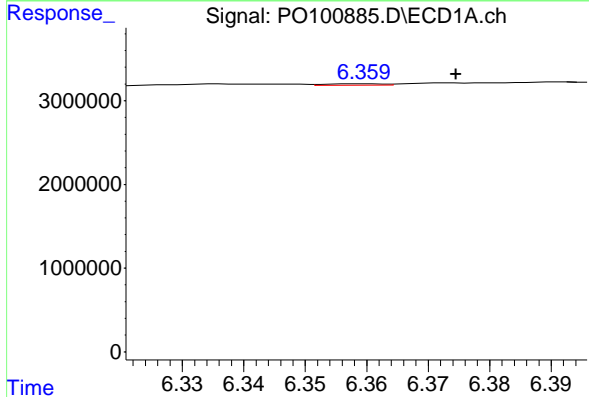
R.T.: 6.444 min
 Delta R.T.: 0.004 min
 Response: 723581
 Conc: 8.06 ng/ml

Instrument :
 ECD_O
 ClientSampleId :
 I.BLK



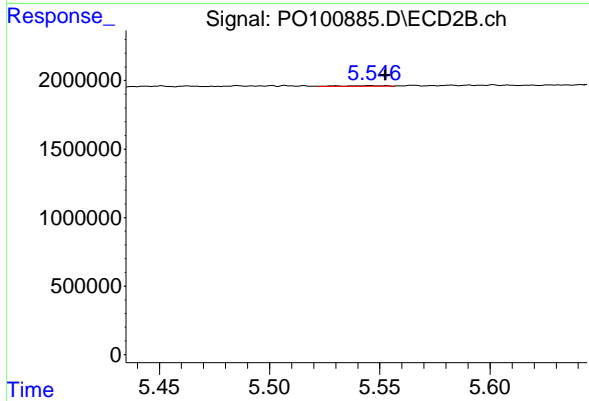
#25 AR-1248-5

R.T.: 5.591 min
 Delta R.T.: -0.004 min
 Response: 32719
 Conc: 0.53 ng/ml



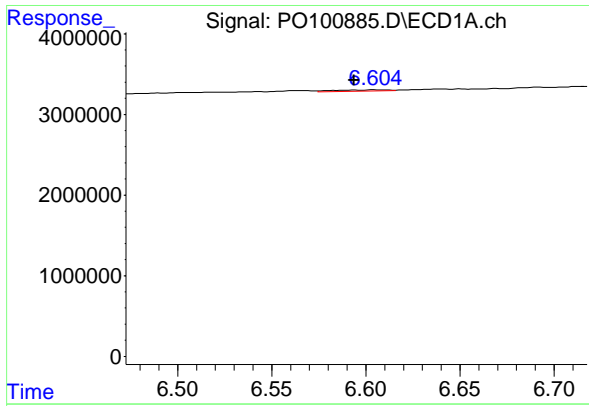
#26 AR-1254-1

R.T.: 6.360 min
 Delta R.T.: -0.015 min
 Response: 112354
 Conc: 1.07 ng/ml



#26 AR-1254-1

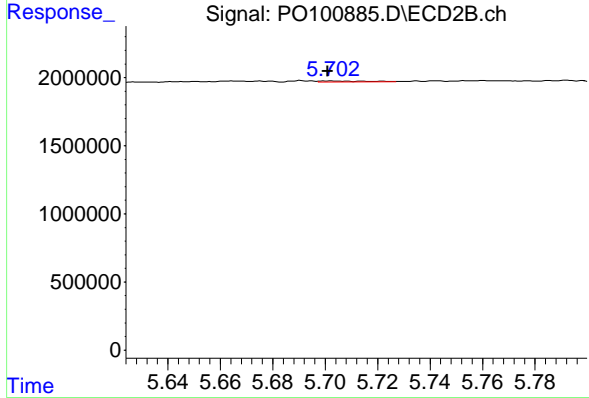
R.T.: 5.546 min
 Delta R.T.: -0.007 min
 Response: 74305
 Conc: 0.72 ng/ml



#27 AR-1254-2

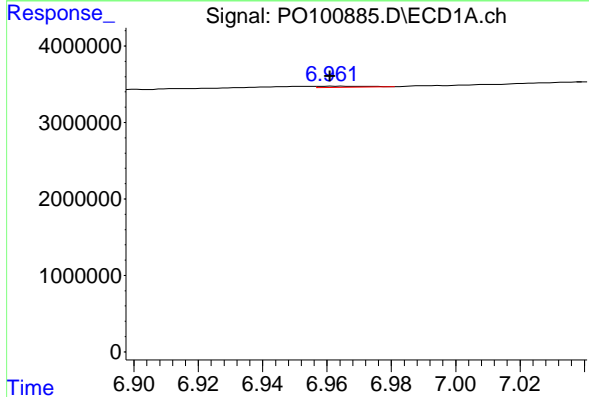
R.T.: 6.604 min
 Delta R.T.: 0.010 min
 Response: 316492
 Conc: 2.14 ng/ml

Instrument :
 ECD_O
 ClientSampleId :
 I.BLK



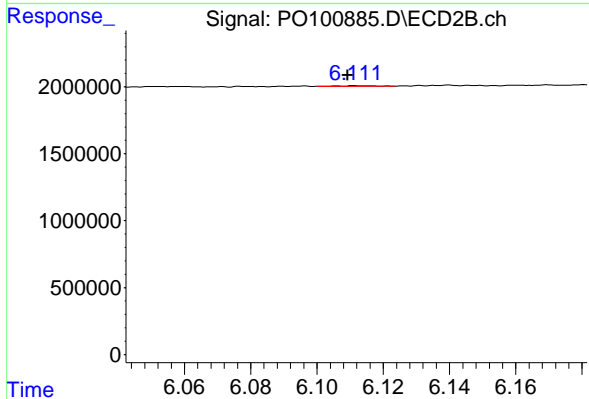
#27 AR-1254-2

R.T.: 5.702 min
 Delta R.T.: 0.000 min
 Response: 96164
 Conc: 1.05 ng/ml



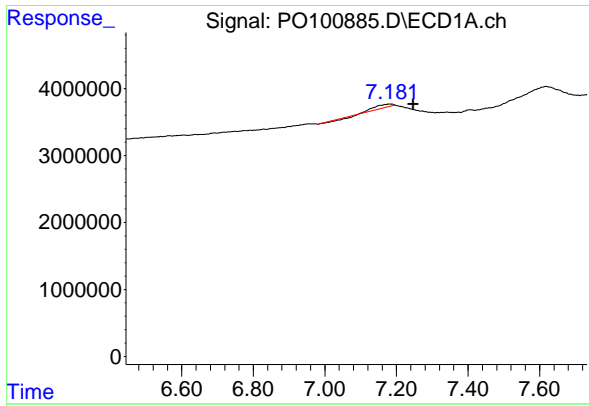
#28 AR-1254-3

R.T.: 6.962 min
 Delta R.T.: 0.000 min
 Response: 179199
 Conc: 1.28 ng/ml



#28 AR-1254-3

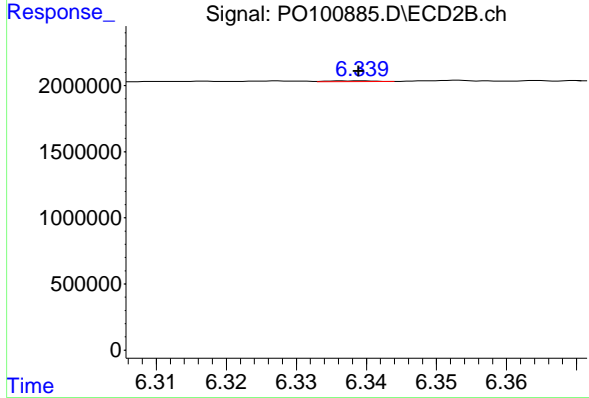
R.T.: 6.112 min
 Delta R.T.: 0.003 min
 Response: 48268
 Conc: 0.36 ng/ml



#29 AR-1254-4

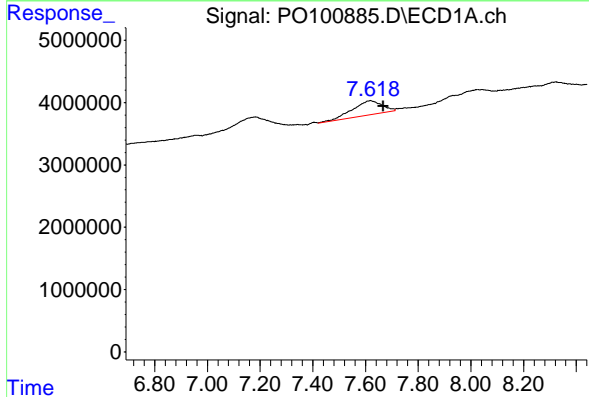
R.T.: 7.181 min
 Delta R.T.: -0.066 min
 Response: 1477973
 Conc: 17.39 ng/ml

Instrument :
 ECD_O
 ClientSampleId :
 I.BLK



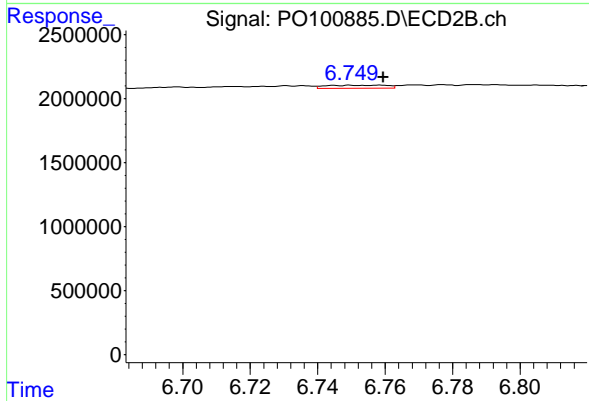
#29 AR-1254-4

R.T.: 6.338 min
 Delta R.T.: 0.000 min
 Response: 27445
 Conc: 0.38 ng/ml



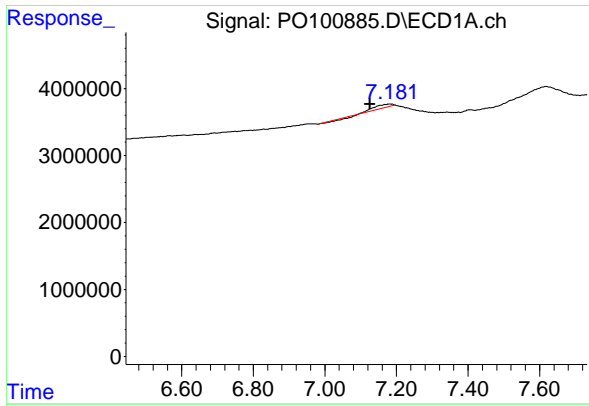
#30 AR-1254-5

R.T.: 7.619 min
 Delta R.T.: -0.049 min
 Response: 17816618
 Conc: 150.57 ng/ml



#30 AR-1254-5

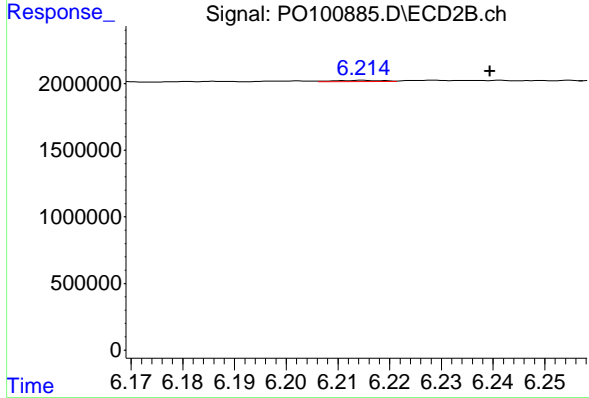
R.T.: 6.759 min
 Delta R.T.: 0.000 min
 Response: 291854
 Conc: 2.53 ng/ml



#31 AR-1260-1

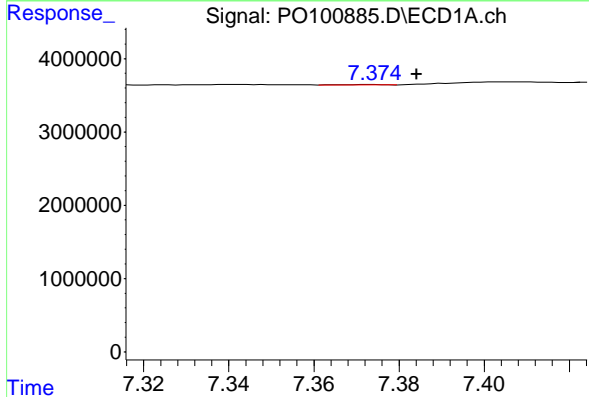
R.T.: 7.181 min
 Delta R.T.: 0.055 min
 Response: 1477973
 Conc: 10.79 ng/ml

Instrument :
 ECD_O
 ClientSampleId :
 I.BLK



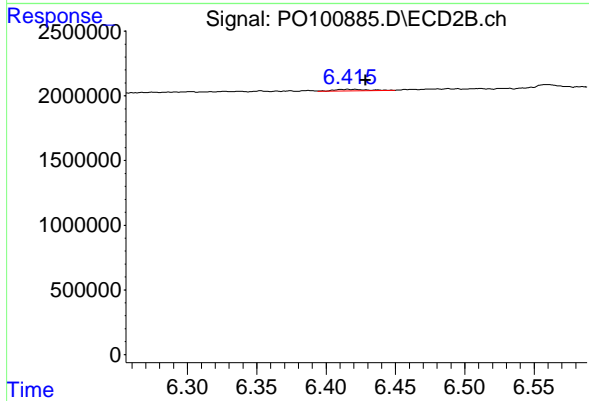
#31 AR-1260-1

R.T.: 6.215 min
 Delta R.T.: -0.024 min
 Response: 66281
 Conc: 0.70 ng/ml



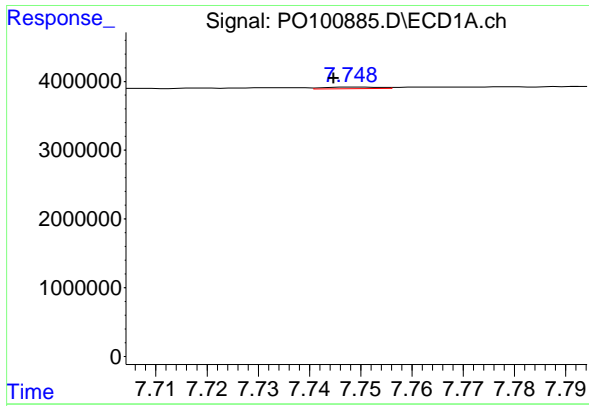
#32 AR-1260-2

R.T.: 7.374 min
 Delta R.T.: -0.010 min
 Response: 31277
 Conc: 0.25 ng/ml



#32 AR-1260-2

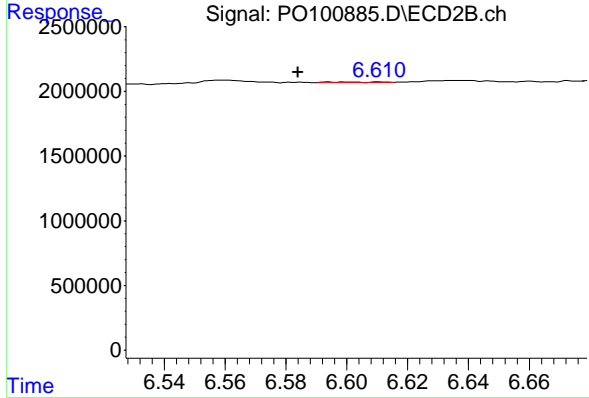
R.T.: 6.415 min
 Delta R.T.: -0.013 min
 Response: 194900
 Conc: 1.81 ng/ml



#33 AR-1260-3

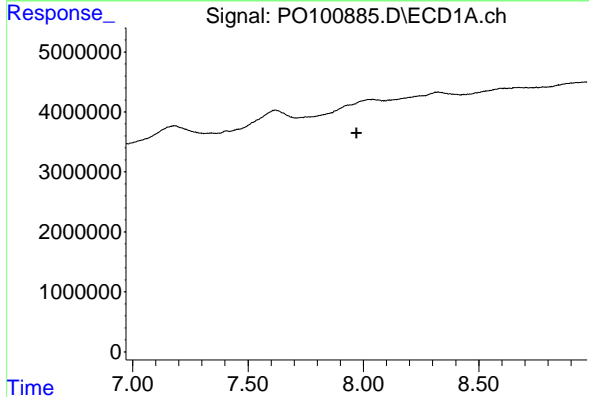
R.T.: 7.749 min
 Delta R.T.: 0.004 min
 Response: 167460
 Conc: 1.73 ng/ml

Instrument :
 ECD_O
 ClientSampleId :
 I.BLK



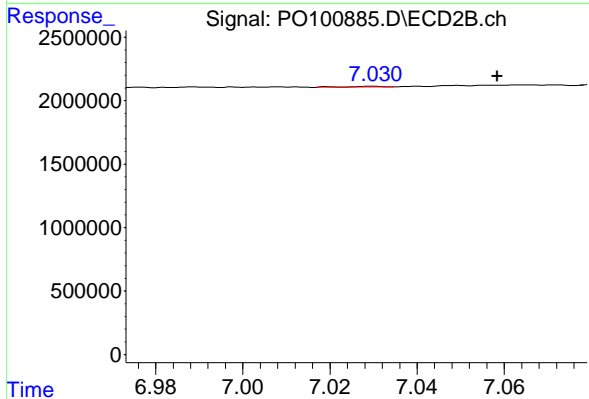
#33 AR-1260-3

R.T.: 6.594 min
 Delta R.T.: 0.010 min
 Response: 51952
 Conc: 0.51 ng/ml



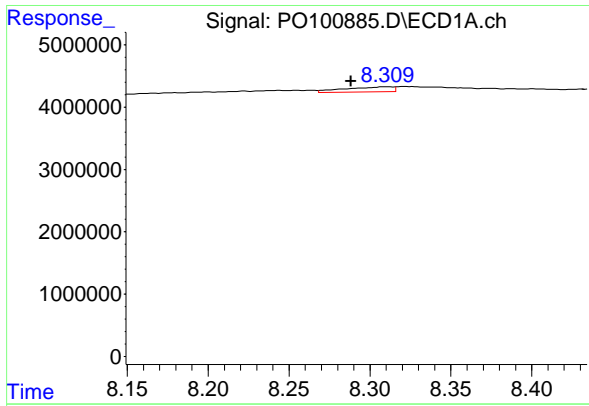
#34 AR-1260-4

R.T.: 7.933 min
 Delta R.T.: -0.038 min
 Response: -1140564
 Conc: N.D.



#34 AR-1260-4

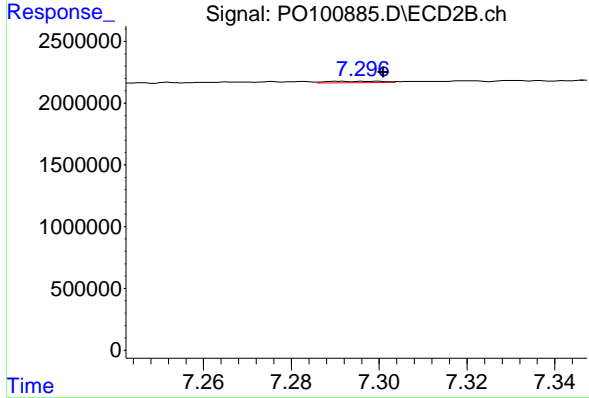
R.T.: 7.030 min
 Delta R.T.: -0.029 min
 Response: 25834
 Conc: 0.32 ng/ml



#35 AR-1260-5

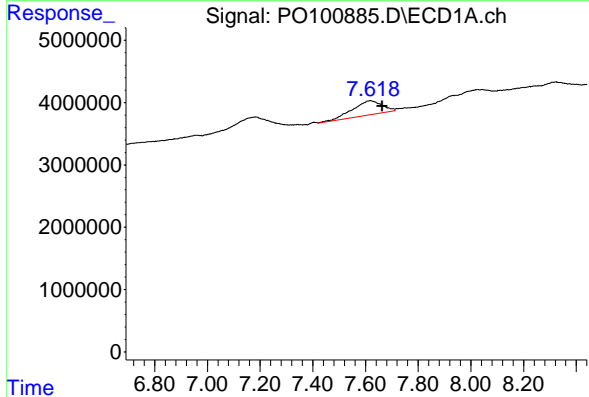
R.T.: 8.310 min
 Delta R.T.: 0.021 min
 Response: 1713370
 Conc: 8.12 ng/ml

Instrument :
 ECD_O
 ClientSampleId :
 I.BLK



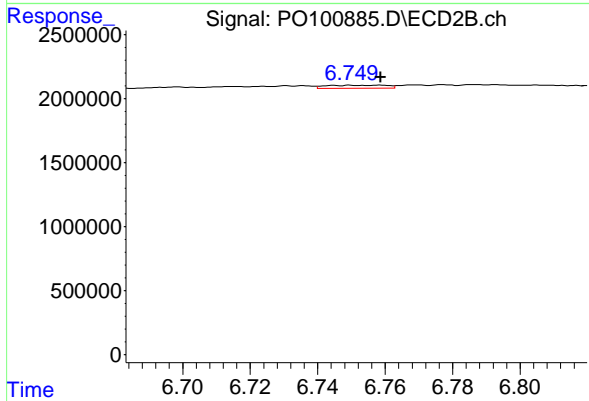
#35 AR-1260-5

R.T.: 7.291 min
 Delta R.T.: -0.010 min
 Response: 107294
 Conc: 0.59 ng/ml



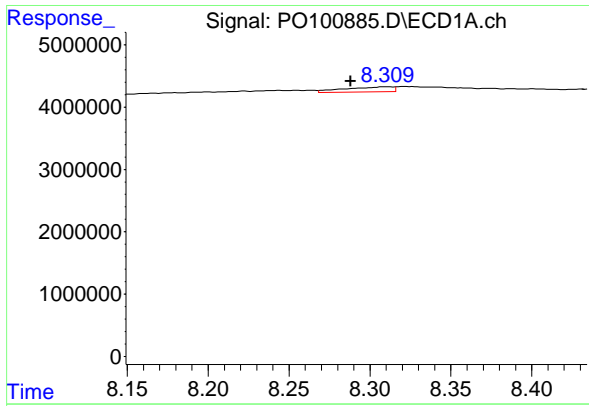
#36 AR-1262-1

R.T.: 7.619 min
 Delta R.T.: -0.045 min
 Response: 17816618
 Conc: 178.34 ng/ml



#36 AR-1262-1

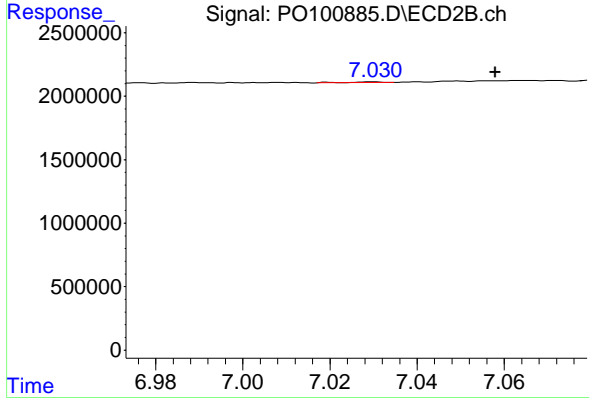
R.T.: 6.759 min
 Delta R.T.: 0.000 min
 Response: 291854
 Conc: 4.68 ng/ml



#37 AR-1262-2

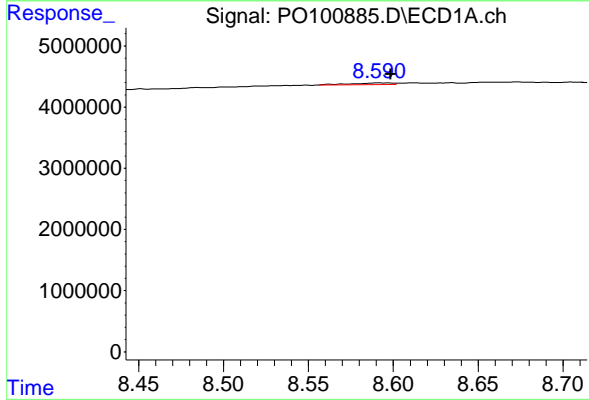
R.T.: 8.310 min
 Delta R.T.: 0.022 min
 Response: 1713370
 Conc: 7.22 ng/ml

Instrument :
 ECD_O
 ClientSampleId :
 I.BLK



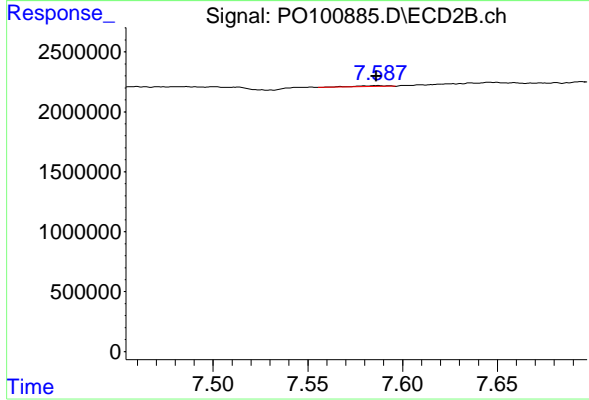
#37 AR-1262-2

R.T.: 7.030 min
 Delta R.T.: -0.028 min
 Response: 25834
 Conc: 0.23 ng/ml



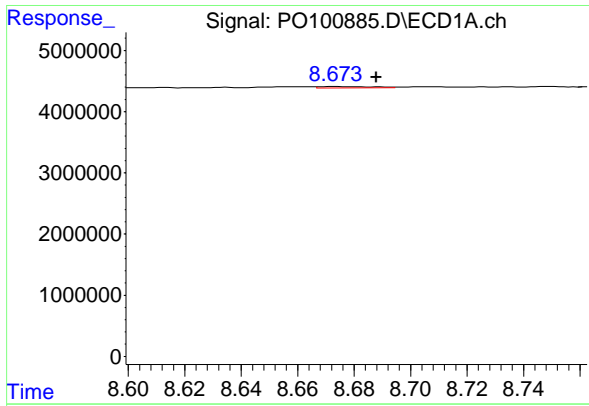
#38 AR-1262-3

R.T.: 8.591 min
 Delta R.T.: -0.008 min
 Response: 486153
 Conc: 2.99 ng/ml



#38 AR-1262-3

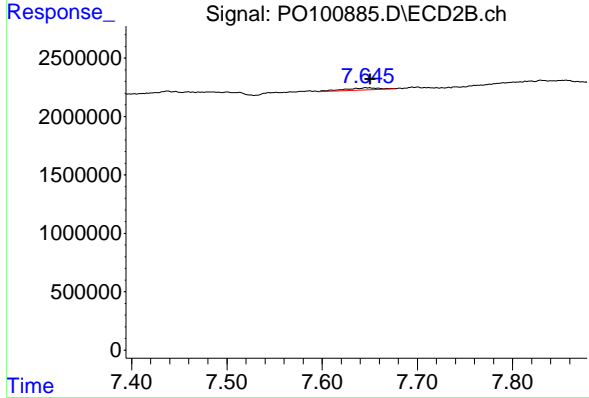
R.T.: 7.587 min
 Delta R.T.: 0.000 min
 Response: 82870
 Conc: 1.08 ng/ml



#39 AR-1262-4

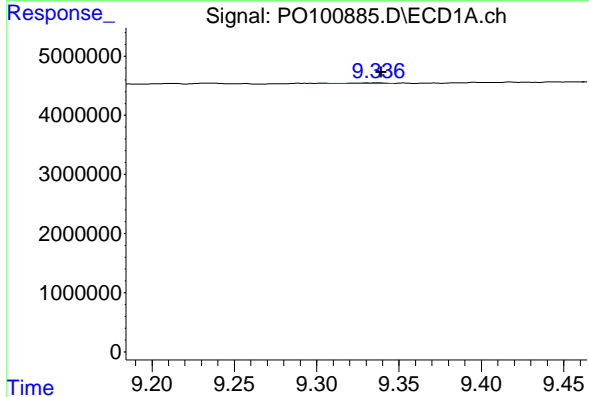
R.T.: 8.674 min
 Delta R.T.: -0.014 min
 Response: 308105
 Conc: 2.39 ng/ml

Instrument :
 ECD_O
 ClientSampleId :
 I.BLK



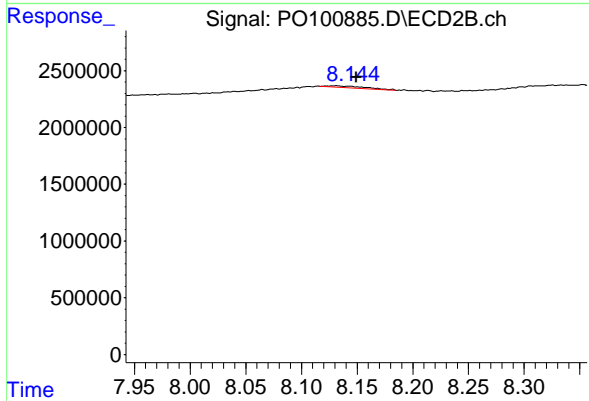
#39 AR-1262-4

R.T.: 7.646 min
 Delta R.T.: -0.005 min
 Response: 404989
 Conc: 2.74 ng/ml



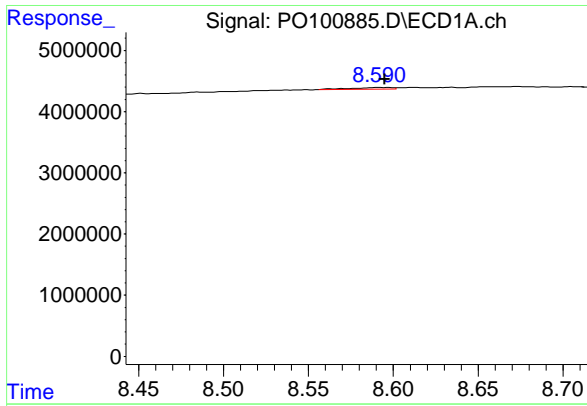
#40 AR-1262-5

R.T.: 9.337 min
 Delta R.T.: -0.002 min
 Response: 76951
 Conc: 0.96 ng/ml



#40 AR-1262-5

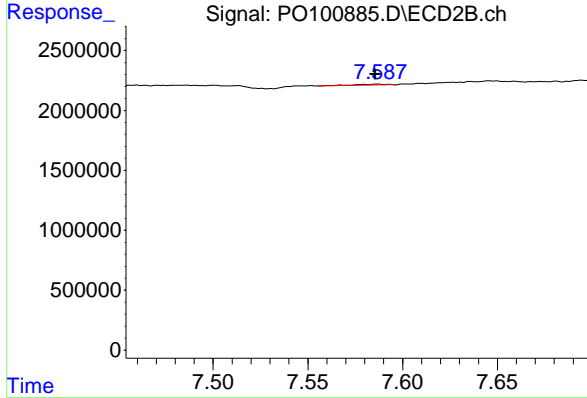
R.T.: 8.131 min
 Delta R.T.: -0.018 min
 Response: 296680
 Conc: 4.64 ng/ml



#41 AR-1268-1

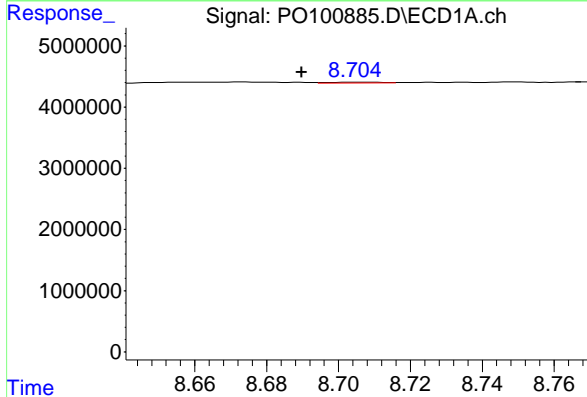
R.T.: 8.591 min
 Delta R.T.: -0.004 min
 Response: 486153
 Conc: 1.72 ng/ml

Instrument :
 ECD_O
 ClientSampleId :
 I.BLK



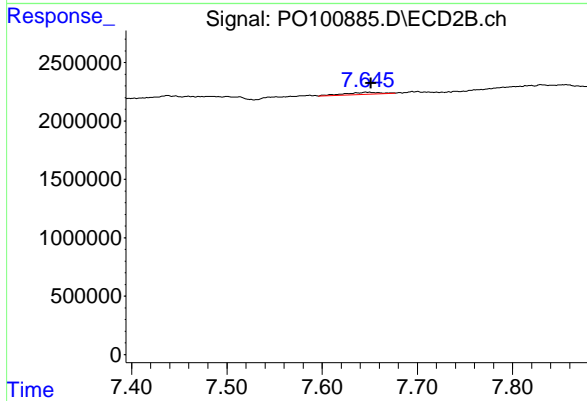
#41 AR-1268-1

R.T.: 7.587 min
 Delta R.T.: 0.001 min
 Response: 82870
 Conc: 0.37 ng/ml



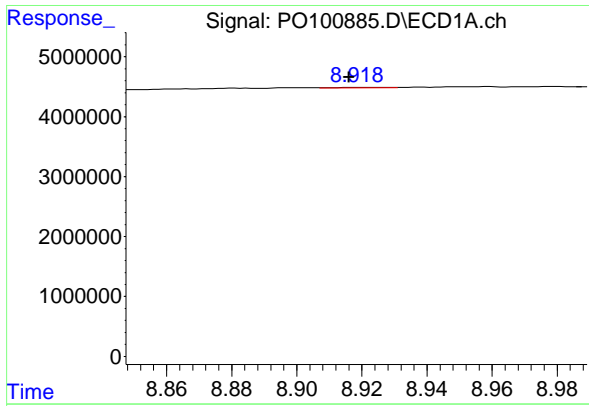
#42 AR-1268-2

R.T.: 8.704 min
 Delta R.T.: 0.015 min
 Response: 145296
 Conc: 0.57 ng/ml



#42 AR-1268-2

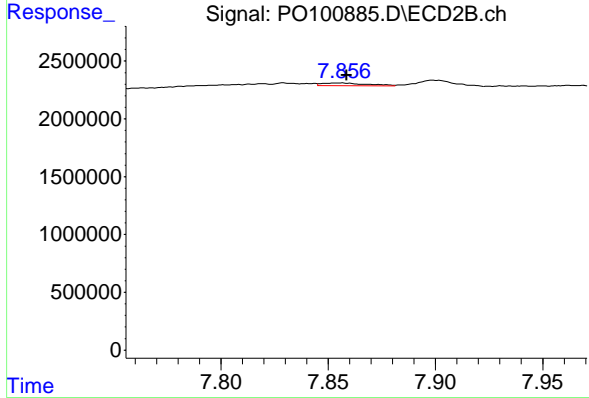
R.T.: 7.646 min
 Delta R.T.: -0.005 min
 Response: 404989
 Conc: 2.00 ng/ml



#43 AR-1268-3

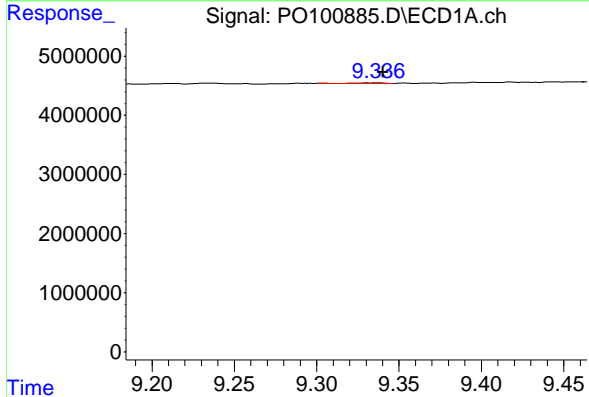
R.T.: 8.926 min
 Delta R.T.: 0.010 min
 Response: 97399
 Conc: 0.43 ng/ml

Instrument :
 ECD_O
 ClientSampleId :
 I.BLK



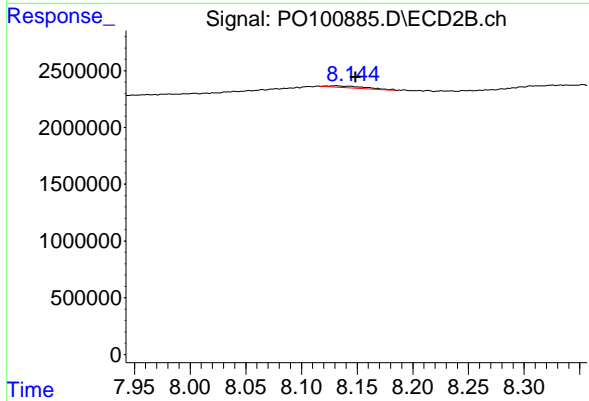
#43 AR-1268-3

R.T.: 7.855 min
 Delta R.T.: -0.003 min
 Response: 324675
 Conc: 1.72 ng/ml



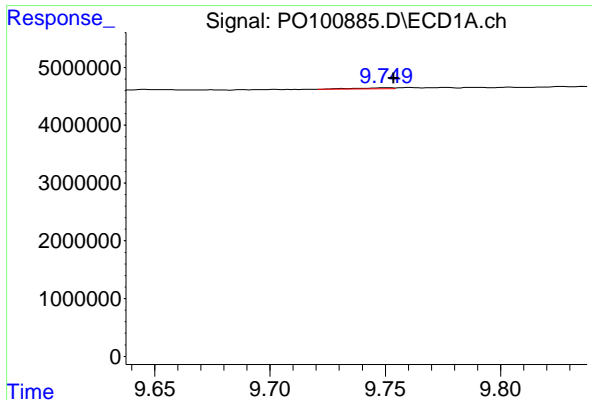
#44 AR-1268-4

R.T.: 9.337 min
 Delta R.T.: -0.003 min
 Response: 76951
 Conc: 0.98 ng/ml



#44 AR-1268-4

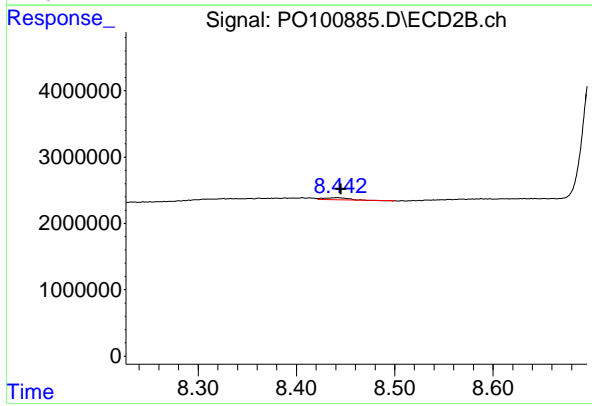
R.T.: 8.131 min
 Delta R.T.: -0.017 min
 Response: 296680
 Conc: 4.42 ng/ml



#45 AR-1268-5

R.T.: 9.750 min
Delta R.T.: -0.003 min
Response: 213958
Conc: 0.30 ng/ml

Instrument :
ECD_O
ClientSampleId :
I.BLK



#45 AR-1268-5

R.T.: 8.442 min
Delta R.T.: -0.004 min
Response: 494313
Conc: 0.95 ng/ml