

Data Path : Z:\pestpcbsrv\HPCHEM1\ECD_0\Data\P0010419\
 Data File : P0053183.D
 Signal(s) : Signal #1: ECD1A.CH Signal #2: ECD2B.CH
 Acq On : 04 Jan 2019 12:04
 Operator : SM/SJ
 Sample : K1017-01RE
 Misc :
 ALS Vial : 10 Sample Multiplier: 1

Instrument :
 ECD_0
 ClientSampled :
 TP-1

Integration File signal 1: autoint1.e
 Integration File signal 2: autoint2.e
 Quant Time: Jan 04 22:08:52 2019
 Quant Method : Z:\pestpcbsrv\HPCHEM1\ECD_0\methods\P0010219.M
 Quant Title : GC EXTRACTABLES
 QLast Update : Wed Jan 02 14:46:04 2019
 Response via : Initial Calibration
 Integrator: ChemStation 6890 Scale Mode: Small noise peaks clipped

Volume Inj. : 2 µl
 Signal #1 Phase : ZB-MR1 Signal #2 Phase: ZB-MR2
 Signal #1 Info : 30Mx0.32mmx 0.50µ Signal #2 Info : 30M x 0.32mm x 0.25µm

Compound	RT#1	RT#2	Resp#1	Resp#2	ng/ml	ng/ml

System Monitoring Compounds						
1) SA Tetrachlo...	4.180	3.214	27211272	4182120	20.797	18.638
2) SA Decachlor...	9.650	7.860	9909110	3007422	12.506	11.699
Target Compounds						
3) L1 AR-1016-1	5.326	0.000	110867	0	2.892	N.D. #
4) L1 AR-1016-2	5.344	0.000	17657	0	0.314	N.D. #
5) L1 AR-1016-3	5.344	4.418	17657	503954	0.524	69.611 #
6) L1 AR-1016-4	0.000	4.418	0	503954	N.D.	92.749 #
7) L1 AR-1016-5	5.792	4.648	1066145	4463257	40.438	611.218 #
8) L2 AR-1221-1	4.407	0.000	198296	0	16.678	N.D. #
9) L2 AR-1221-2	4.478	0.000	617728	0	71.520	N.D. #
10) L2 AR-1221-3	0.000	3.607	0	226144	N.D.	39.731 #
11) L3 AR-1232-1	0.000	3.607	0	226144	N.D.	48.083 #
12) L3 AR-1232-2	5.032	0.000	1369717	0	120.879	N.D. #
13) L3 AR-1232-3	5.344	4.418	17657	503954	0.758	166.143 #
14) L3 AR-1232-4	0.000	4.458	0	773496	N.D.	292.362 #
15) L3 AR-1232-5	5.595	4.648	1539846	4463257	216.807	1566.307 #
16) L4 AR-1242-1	5.326	0.000	110867	0	3.679	N.D. #
17) L4 AR-1242-2	5.344	0.000	17657	0	0.398	N.D. #
18) L4 AR-1242-3	5.344	4.418	17657	503954	0.666	88.275 #
19) L4 AR-1242-4	0.000	4.458	0	773496	N.D.	140.812 #
20) L4 AR-1242-5	6.230	4.938	2098562	1020905	95.908	134.000 #
21) L5 AR-1248-1	5.326	0.000	110867	0	4.898	N.D. #
22) L5 AR-1248-2	5.595	4.418	1539846	503954	52.851	67.280 #
23) L5 AR-1248-3	5.792	4.458	1066145	773496	32.116	98.497 #
24) L5 AR-1248-4	6.168	4.648	16787281	4463257	449.361	472.906
25) L5 AR-1248-5	6.230	4.957	2098562	3235321	58.900	322.486 #
26) L6 AR-1254-1	6.168	4.938	16787281	1020905	438.029	62.272 #
27) L6 AR-1254-2	6.380	5.076	4835505	2003931	81.540	142.821 #
28) L6 AR-1254-3	6.765	5.452	11232070	2351763	182.129	104.244 #
29) L6 AR-1254-4	7.023	5.670	1312059	1832504	28.554	120.890 #
30) L6 AR-1254-5	7.436	6.063	4531944	1717901	99.847	85.813
31) L7 AR-1260-1	6.899	5.573	12011057	3595338	267.865	234.226
32) L7 AR-1260-2	7.156	5.753	11793908	4924641	212.348	257.327
33) L7 AR-1260-3	7.506	5.894	2878245	1331874	82.200	76.999
34) L7 AR-1260-4	7.729	6.343	3261555	806701	83.890	69.736
35) L7 AR-1260-5	8.036	6.583	4960839	2020288	64.278	70.130
36) L8 AR-1262-1	7.506	6.099	2878245	939470	51.649	48.011
37) L8 AR-1262-2	8.036	6.583	4960839	2020288	53.158	60.839
38) L8 AR-1262-3	8.316	6.851	1485937	1291025	35.029	99.702 #
39) L8 AR-1262-4	8.386	6.912	2265762	2444906	46.838	100.703 #
40) L8 AR-1262-5	8.995	7.397	1696422	432929	50.052	38.354
41) L9 AR-1268-1	8.316	6.851	1485937	1291025	11.451	29.715 #
42) L9 AR-1268-2	8.386	6.912	2265762	2444906	18.559	59.450 #

Data Path : Z:\pestpcbsrv\HPCHEM1\ECD_0\Data\P0010419\
 Data File : P0053183.D
 Signal(s) : Signal #1: ECD1A.CH Signal #2: ECD2B.CH
 Acq On : 04 Jan 2019 12:04
 Operator : SM/SJ
 Sample : K1017-01RE
 Misc :
 ALS Vial : 10 Sample Multiplier: 1

Instrument :
 ECD_0
 ClientSampleId :
 TP-1

Integration File signal 1: autoint1.e
 Integration File signal 2: autoint2.e
 Quant Time: Jan 04 22:08:52 2019
 Quant Method : Z:\pestpcbsrv\HPCHEM1\ECD_0\methods\P0010219.M
 Quant Title : GC EXTRACTABLES
 QLast Update : Wed Jan 02 14:46:04 2019
 Response via : Initial Calibration
 Integrator: ChemStation 6890 Scale Mode: Small noise peaks clipped

Volume Inj. : 2 µl
 Signal #1 Phase : ZB-MR1 Signal #2 Phase: ZB-MR2
 Signal #1 Info : 30Mx0.32mmx 0.50µ Signal #2 Info : 30M x 0.32mm x 0.25µm

	Compound	RT#1	RT#2	Resp#1	Resp#2	ng/ml	ng/ml
43)	L9 AR-1268-3	8.602	7.104	681418	937163	6.348	26.798 #
44)	L9 AR-1268-4	8.995	7.397	1696422	432929	39.442	29.906
45)	L9 AR-1268-5	9.360	7.655	1285358	467432	3.882	4.474

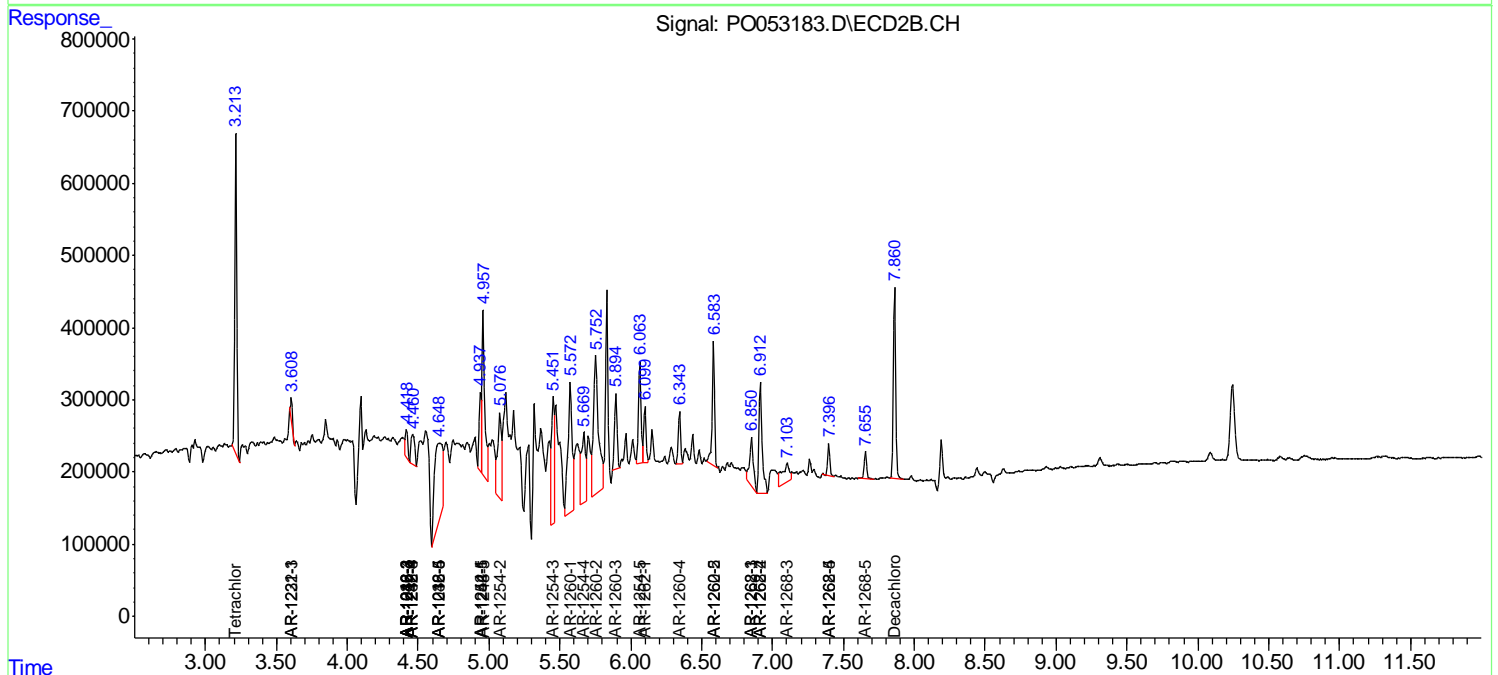
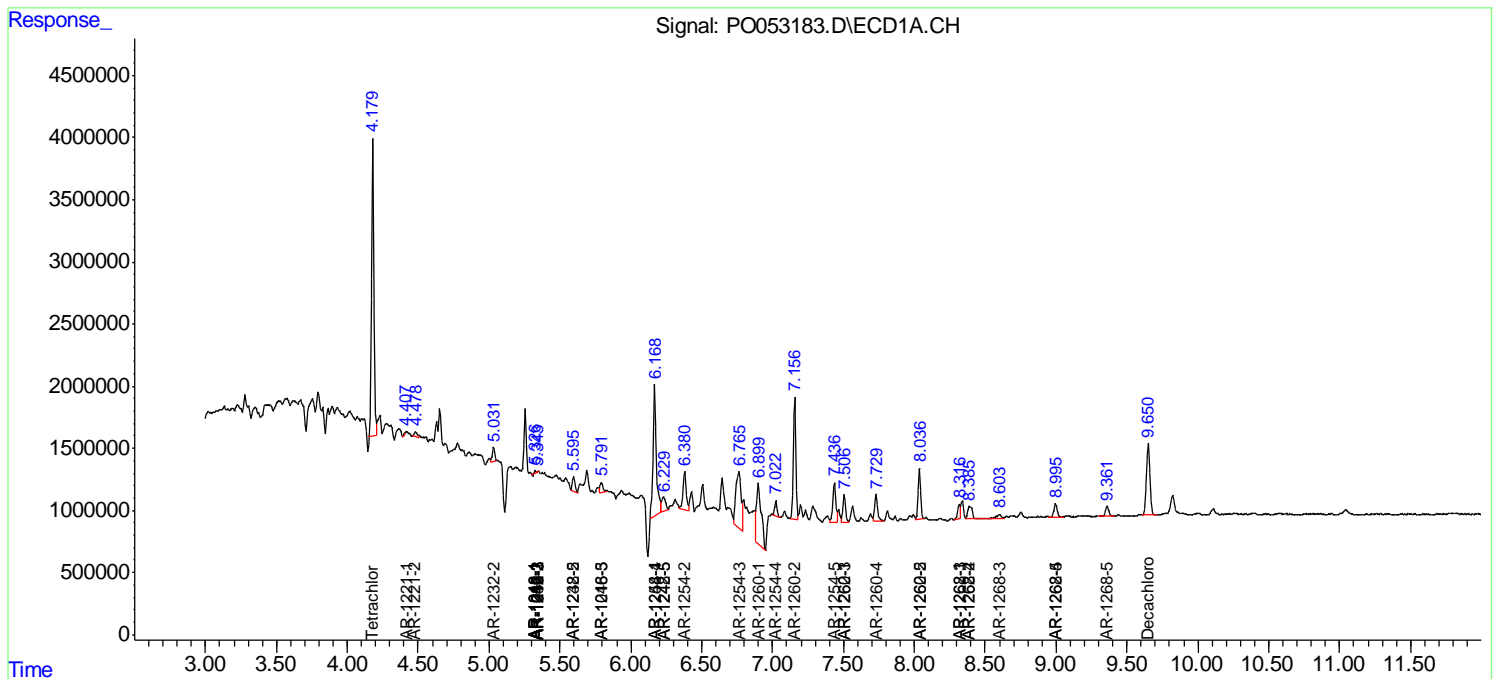
(f)=RT Delta > 1/2 Window (#)=Amounts differ by > 25% (m)=manual int.

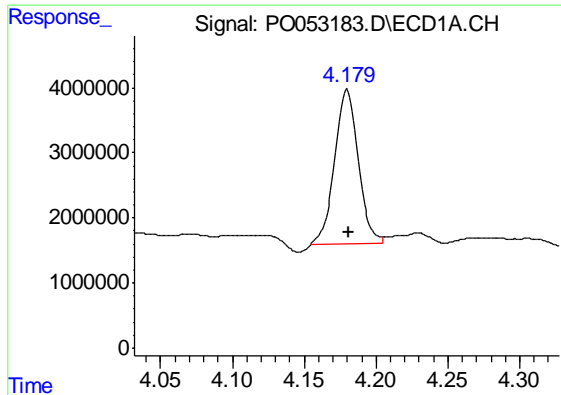
Data Path : Z:\pestpcbsrv\HPCHEM1\ECD_O\Data\PO010419\
 Data File : PO053183.D
 Signal(s) : Signal #1: ECD1A.CH Signal #2: ECD2B.CH
 Acq On : 04 Jan 2019 12:04
 Operator : SM/SJ
 Sample : K1017-01RE
 Misc :
 ALS Vial : 10 Sample Multiplier: 1

Instrument :
 ECD_O
 ClientSampled :
 TP-1

Integration File signal 1: autoint1.e
 Integration File signal 2: autoint2.e
 Quant Time: Jan 04 22:08:52 2019
 Quant Method : Z:\pestpcbsrv\HPCHEM1\ECD_O\methods\PO010219.M
 Quant Title : GC EXTRACTABLES
 QLast Update : Wed Jan 02 14:46:04 2019
 Response via : Initial Calibration
 Integrator: ChemStation 6890 Scale Mode: Small noise peaks clipped

Volume Inj. : 2 µl
 Signal #1 Phase : ZB-MR1 Signal #2 Phase: ZB-MR2
 Signal #1 Info : 30Mx0.32mmx 0.50µ Signal #2 Info : 30M x 0.32mm x 0.25µm

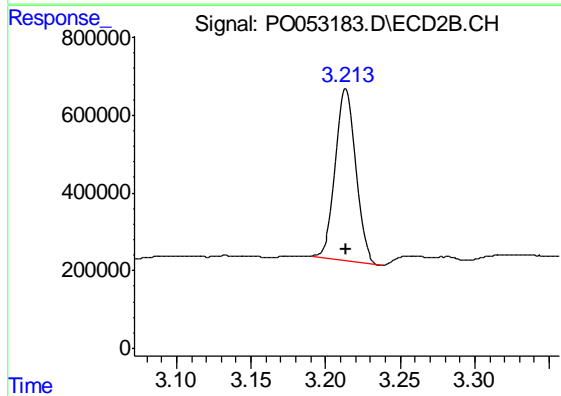




#1 Tetrachloro-m-xylene

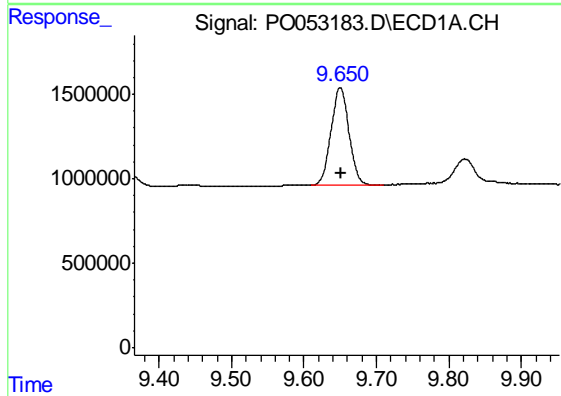
R.T.: 4.180 min
 Delta R.T.: -0.001 min
 Response: 27211272
 Conc: 20.80 ng/ml

Instrument :
 ECD_O
 ClientSampleId :
 TP-1



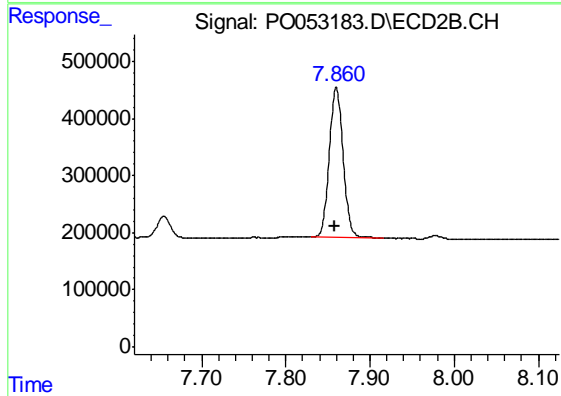
#1 Tetrachloro-m-xylene

R.T.: 3.214 min
 Delta R.T.: 0.000 min
 Response: 4182120
 Conc: 18.64 ng/ml



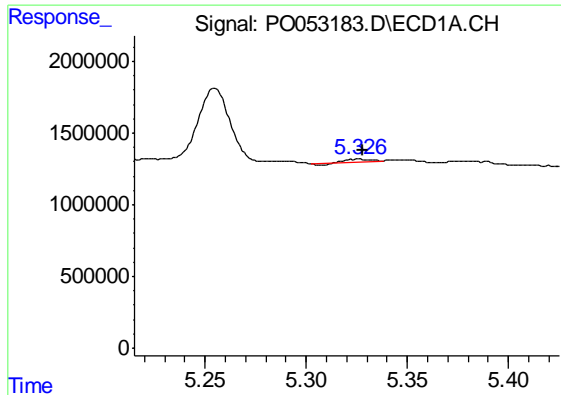
#2 Decachlorobiphenyl

R.T.: 9.650 min
 Delta R.T.: 0.000 min
 Response: 9909110
 Conc: 12.51 ng/ml



#2 Decachlorobiphenyl

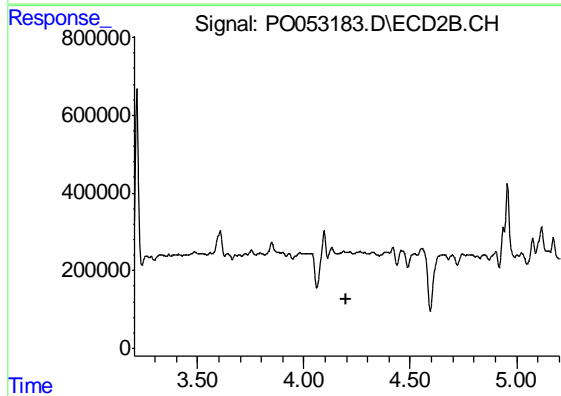
R.T.: 7.860 min
 Delta R.T.: 0.001 min
 Response: 3007422
 Conc: 11.70 ng/ml



#3 AR-1016-1

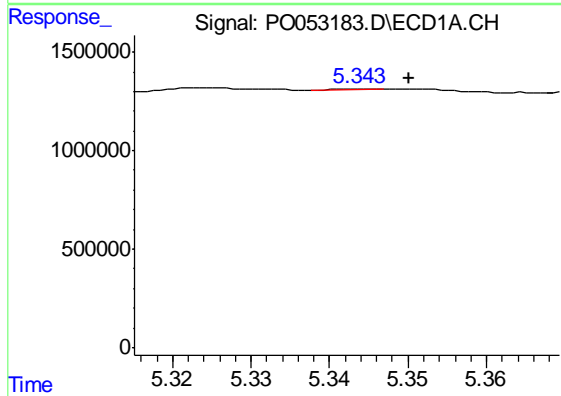
R.T.: 5.326 min
 Delta R.T.: -0.002 min
 Response: 110867
 Conc: 2.89 ng/ml

Instrument :
 ECD_O
 ClientSampled :
 TP-1



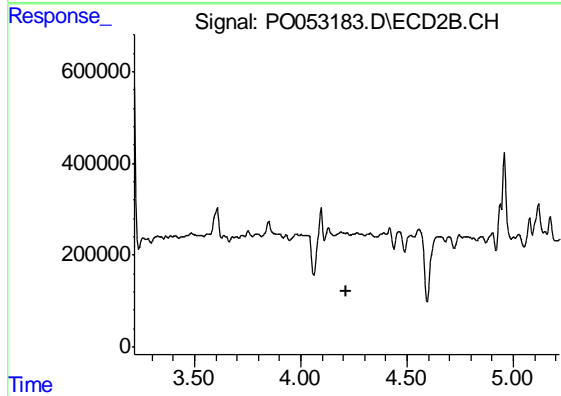
#3 AR-1016-1

R.T.: 0.000 min
 Exp R.T. : 4.202 min
 Response: 0
 Conc: N.D.



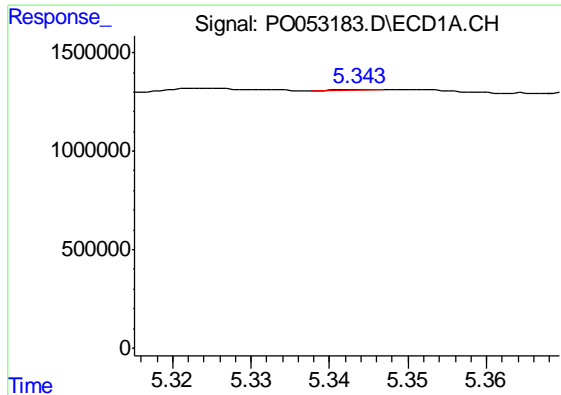
#4 AR-1016-2

R.T.: 5.344 min
 Delta R.T.: -0.006 min
 Response: 17657
 Conc: 0.31 ng/ml



#4 AR-1016-2

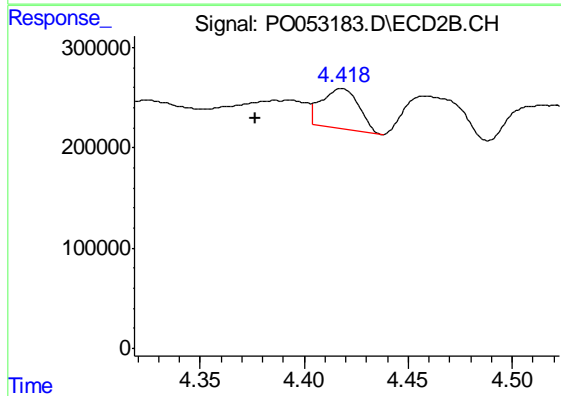
R.T.: 0.000 min
 Exp R.T. : 4.217 min
 Response: 0
 Conc: N.D.



#5 AR-1016-3

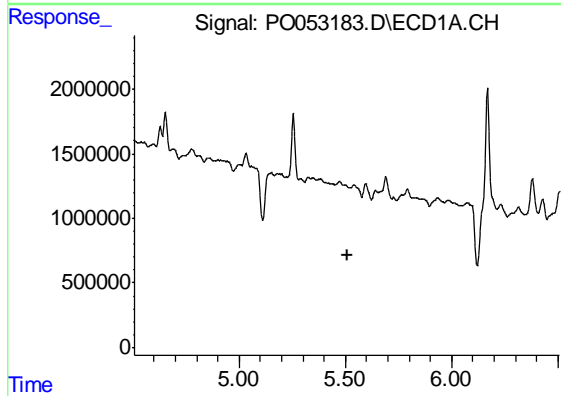
R.T.: 5.344 min
 Delta R.T.: -0.066 min
 Response: 17657
 Conc: 0.52 ng/ml

Instrument :
 ECD_O
 ClientSampleId :
 TP-1



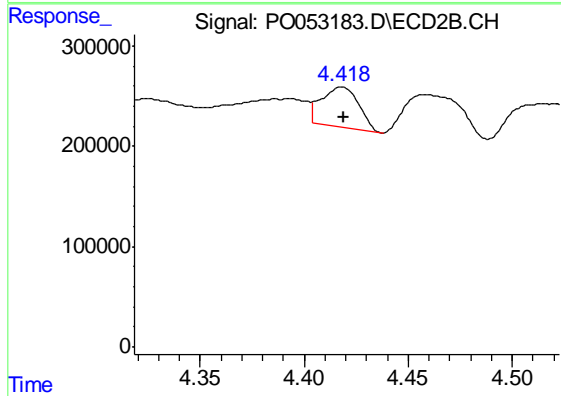
#5 AR-1016-3

R.T.: 4.418 min
 Delta R.T.: 0.042 min
 Response: 503954
 Conc: 69.61 ng/ml



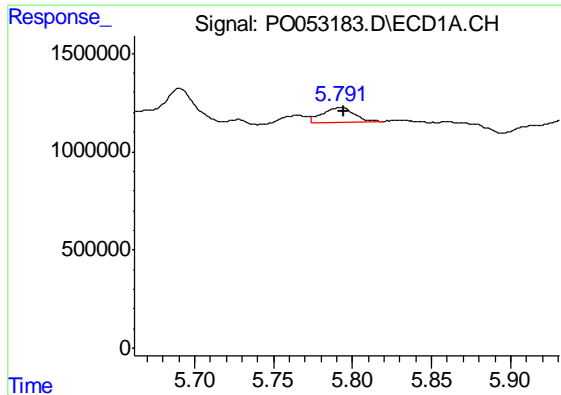
#6 AR-1016-4

R.T.: 0.000 min
 Exp R.T. : 5.507 min
 Response: 0
 Conc: N.D.



#6 AR-1016-4

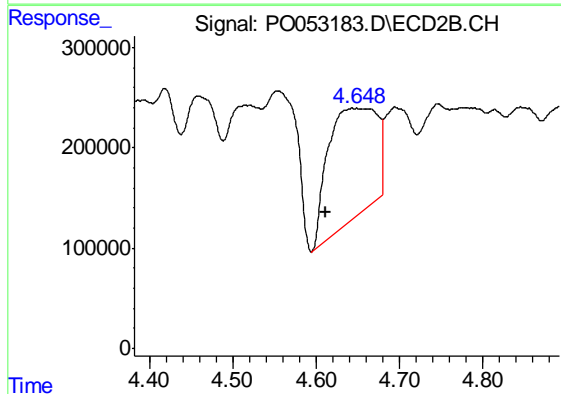
R.T.: 4.418 min
 Delta R.T.: -0.001 min
 Response: 503954
 Conc: 92.75 ng/ml



#7 AR-1016-5

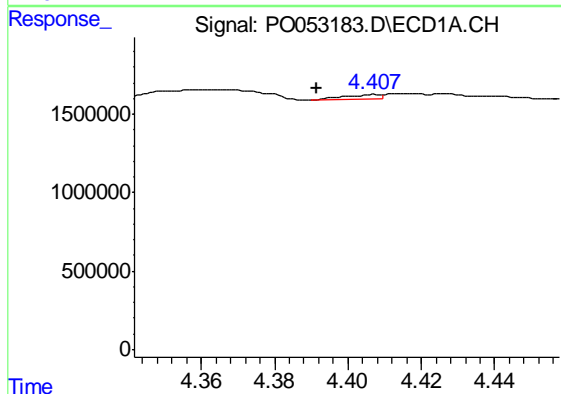
R.T.: 5.792 min
 Delta R.T.: -0.003 min
 Response: 1066145
 Conc: 40.44 ng/ml

Instrument :
 ECD_O
 ClientSampled :
 TP-1



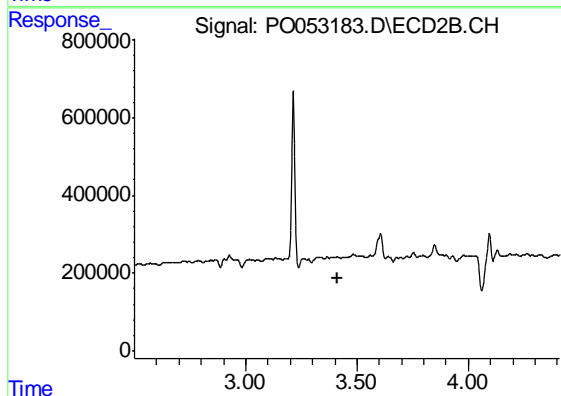
#7 AR-1016-5

R.T.: 4.648 min
 Delta R.T.: 0.036 min
 Response: 4463257
 Conc: 611.22 ng/ml



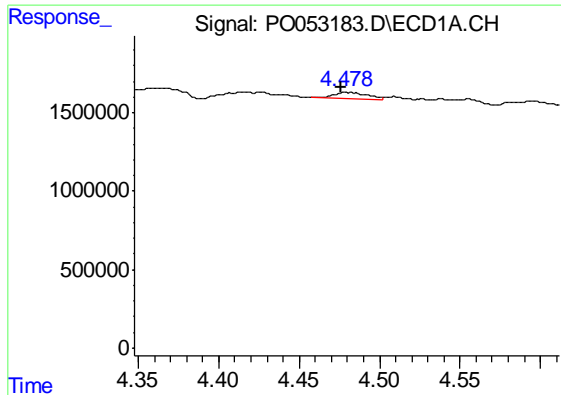
#8 AR-1221-1

R.T.: 4.407 min
 Delta R.T.: 0.016 min
 Response: 198296
 Conc: 16.68 ng/ml



#8 AR-1221-1

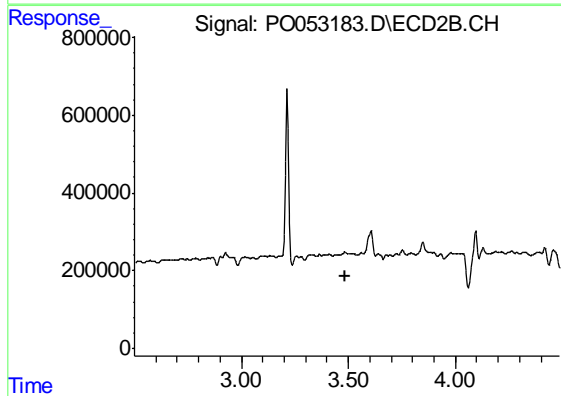
R.T.: 0.000 min
 Exp R.T. : 3.409 min
 Response: 0
 Conc: N.D.



#9 AR-1221-2

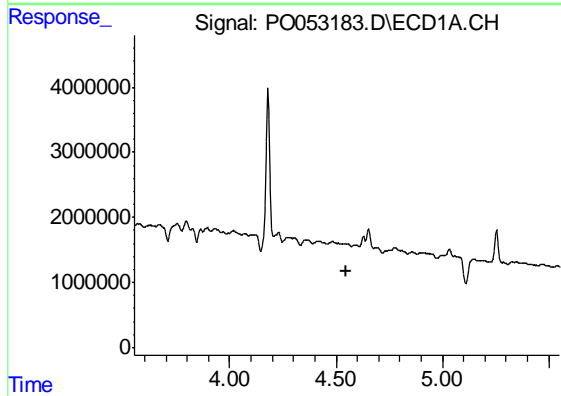
R.T.: 4.478 min
 Delta R.T.: 0.002 min
 Response: 617728
 Conc: 71.52 ng/ml

Instrument :
 ECD_O
 ClientSampled :
 TP-1



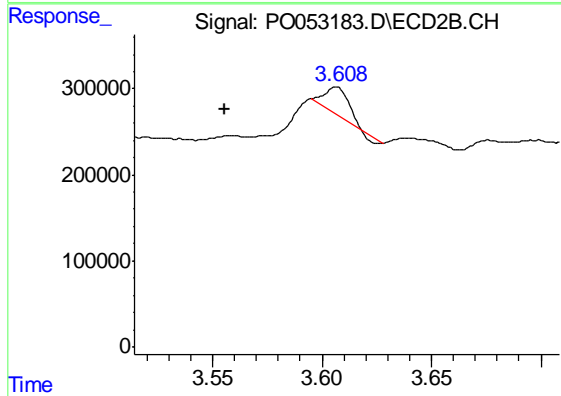
#9 AR-1221-2

R.T.: 0.000 min
 Exp R.T. : 3.487 min
 Response: 0
 Conc: N.D.



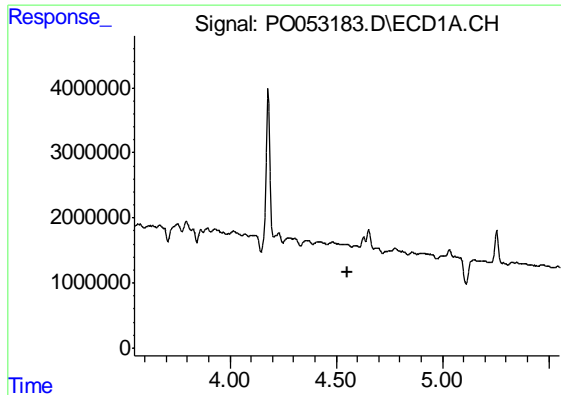
#10 AR-1221-3

R.T.: 0.000 min
 Exp R.T. : 4.551 min
 Response: 0
 Conc: N.D.



#10 AR-1221-3

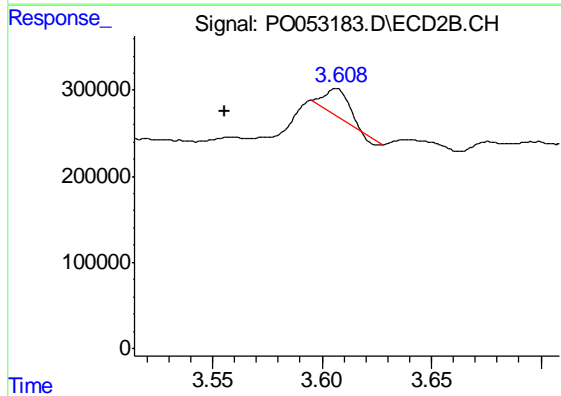
R.T.: 3.607 min
 Delta R.T.: 0.051 min
 Response: 226144
 Conc: 39.73 ng/ml



#11 AR-1232-1

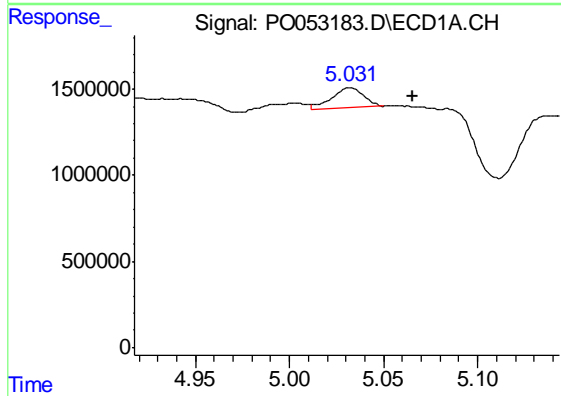
R.T.: 0.000 min
 Exp R.T. : 4.551 min
 Response: 0
 Conc: N.D.

Instrument :
 ECD_O
 ClientSampleId :
 TP-1



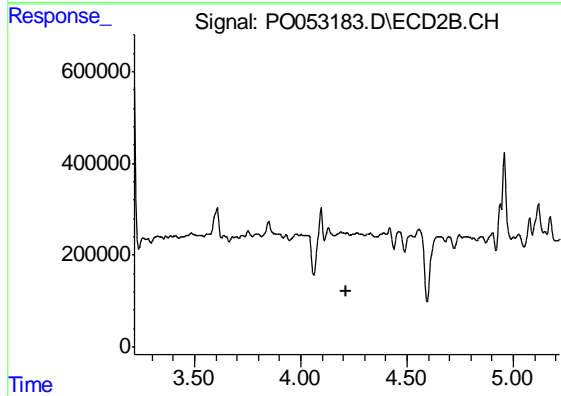
#11 AR-1232-1

R.T.: 3.607 min
 Delta R.T.: 0.051 min
 Response: 226144
 Conc: 48.08 ng/ml



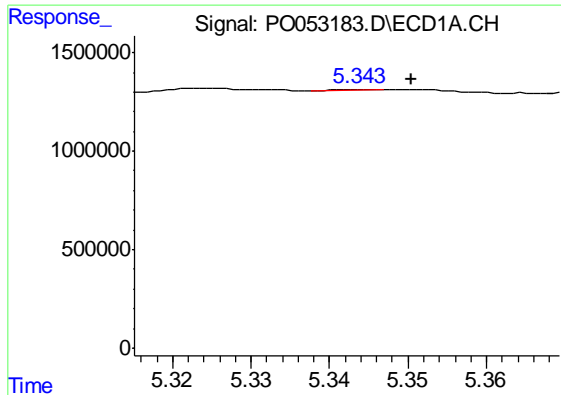
#12 AR-1232-2

R.T.: 5.032 min
 Delta R.T.: -0.034 min
 Response: 1369717
 Conc: 120.88 ng/ml



#12 AR-1232-2

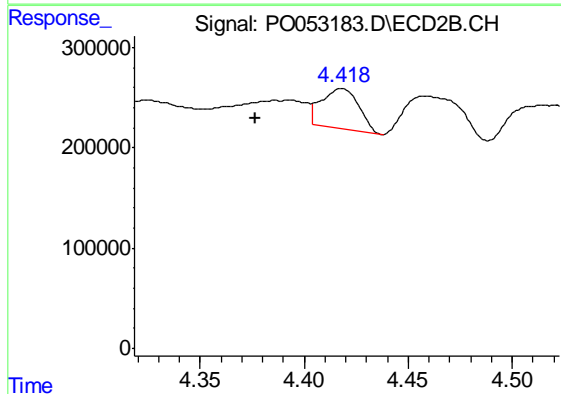
R.T.: 0.000 min
 Exp R.T. : 4.217 min
 Response: 0
 Conc: N.D.



#13 AR-1232-3

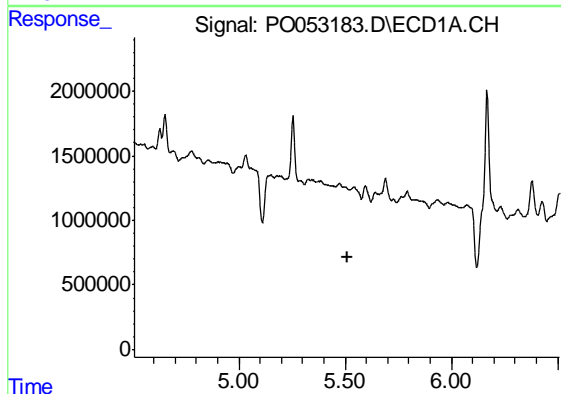
R.T.: 5.344 min
 Delta R.T.: -0.007 min
 Response: 17657
 Conc: 0.76 ng/ml

Instrument :
 ECD_O
 ClientSampled :
 TP-1



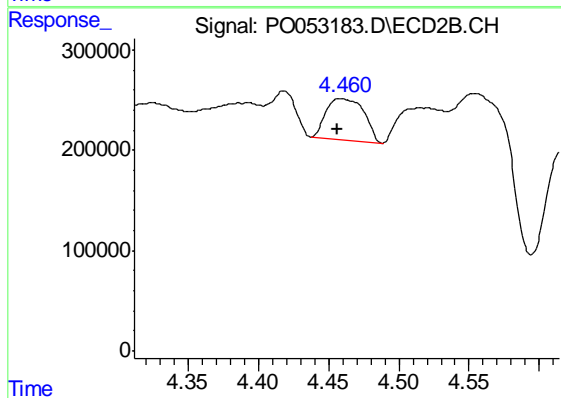
#13 AR-1232-3

R.T.: 4.418 min
 Delta R.T.: 0.041 min
 Response: 503954
 Conc: 166.14 ng/ml



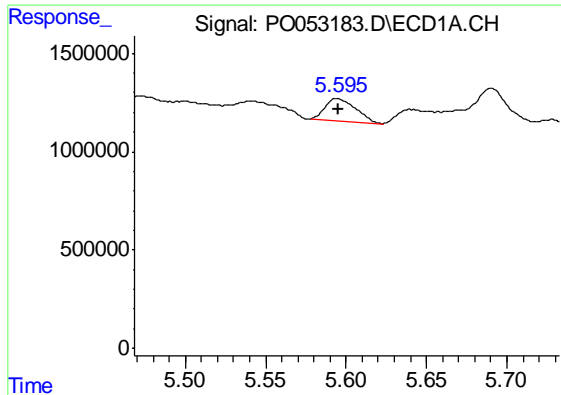
#14 AR-1232-4

R.T.: 0.000 min
 Exp R.T. : 5.509 min
 Response: 0
 Conc: N.D.



#14 AR-1232-4

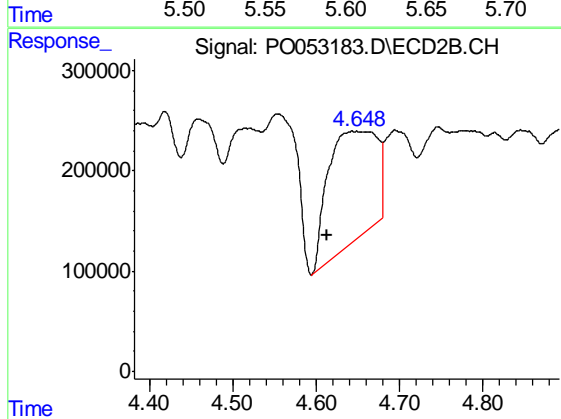
R.T.: 4.458 min
 Delta R.T.: 0.002 min
 Response: 773496
 Conc: 292.36 ng/ml



#15 AR-1232-5

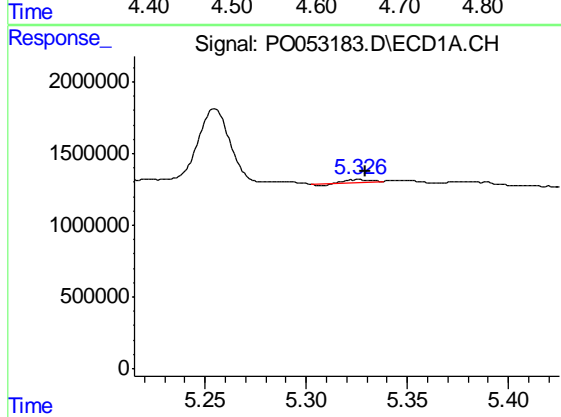
R.T.: 5.595 min
 Delta R.T.: 0.000 min
 Response: 1539846
 Conc: 216.81 ng/ml

Instrument :
 ECD_O
 ClientSampled :
 TP-1



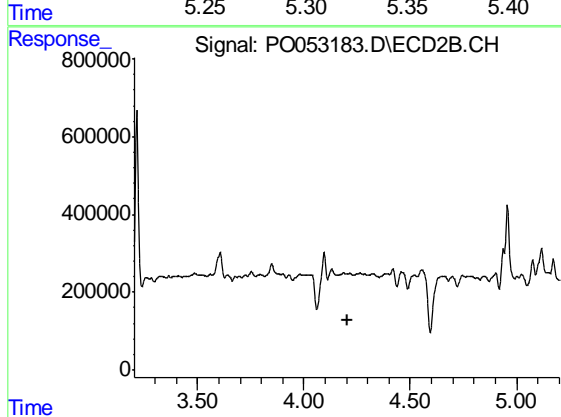
#15 AR-1232-5

R.T.: 4.648 min
 Delta R.T.: 0.036 min
 Response: 4463257
 Conc: 1566.31 ng/ml



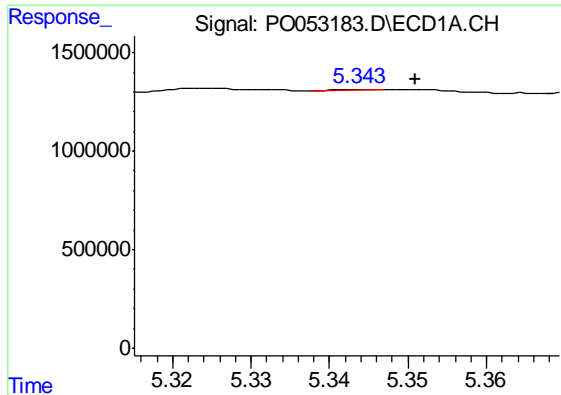
#16 AR-1242-1

R.T.: 5.326 min
 Delta R.T.: -0.003 min
 Response: 110867
 Conc: 3.68 ng/ml



#16 AR-1242-1

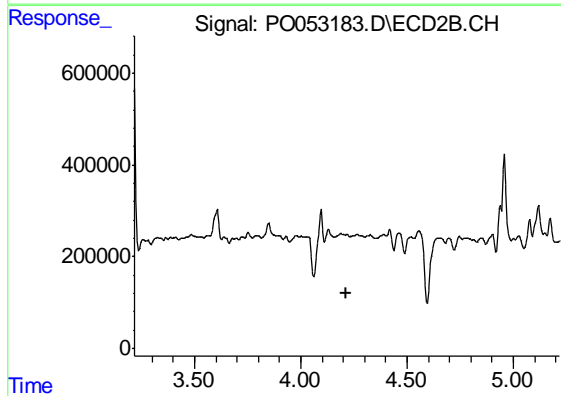
R.T.: 0.000 min
 Exp R.T. : 4.202 min
 Response: 0
 Conc: N.D.



#17 AR-1242-2

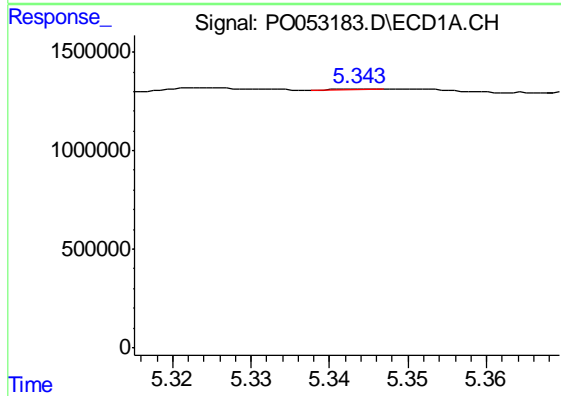
R.T.: 5.344 min
 Delta R.T.: -0.007 min
 Response: 17657
 Conc: 0.40 ng/ml

Instrument :
 ECD_O
 ClientSampled :
 TP-1



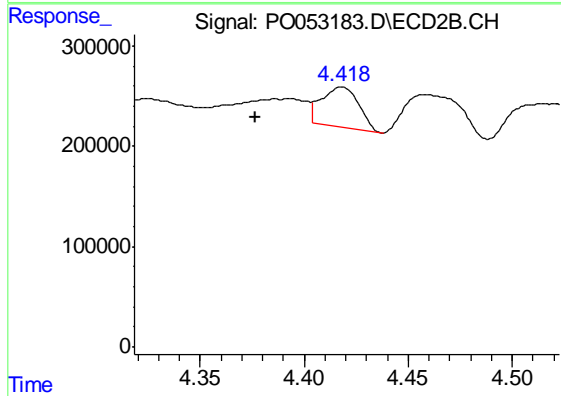
#17 AR-1242-2

R.T.: 0.000 min
 Exp R.T. : 4.217 min
 Response: 0
 Conc: N.D.



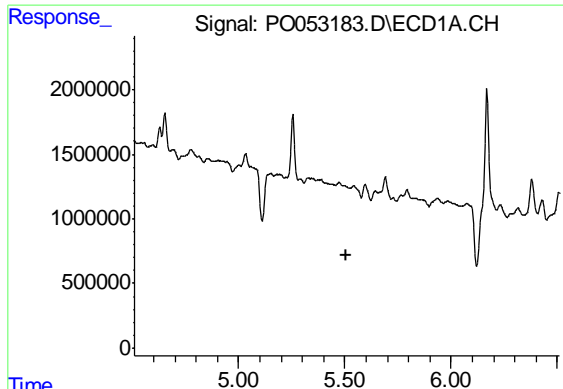
#18 AR-1242-3

R.T.: 5.344 min
 Delta R.T.: -0.067 min
 Response: 17657
 Conc: 0.67 ng/ml



#18 AR-1242-3

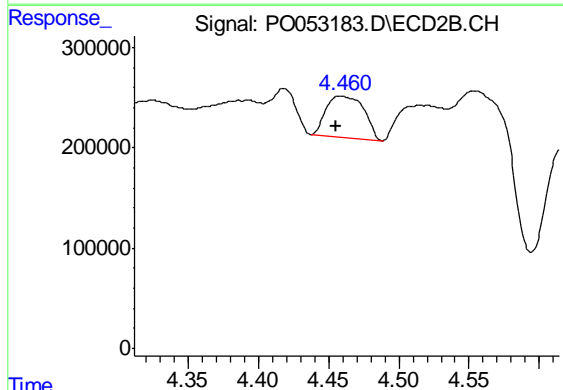
R.T.: 4.418 min
 Delta R.T.: 0.041 min
 Response: 503954
 Conc: 88.27 ng/ml



#19 AR-1242-4

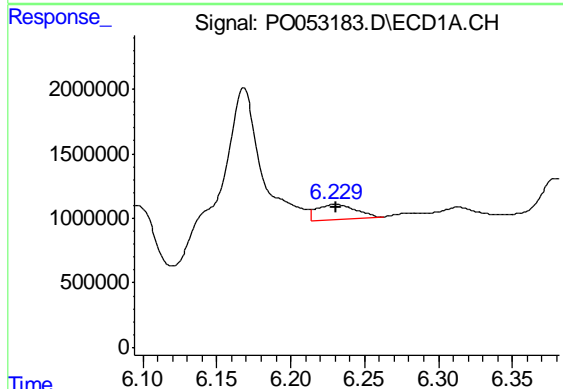
R.T.: 0.000 min
 Exp R.T. : 5.509 min
 Response: 0
 Conc: N.D.

Instrument :
 ECD_O
 ClientSampleId :
 TP-1



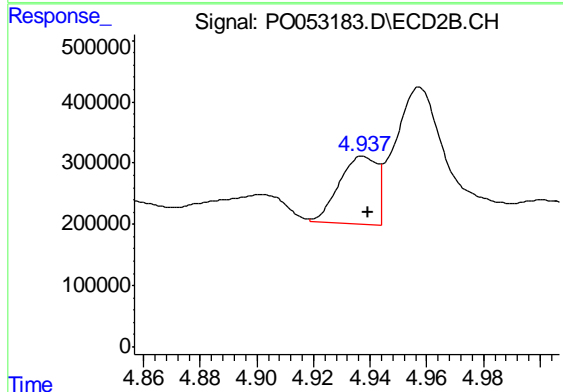
#19 AR-1242-4

R.T.: 4.458 min
 Delta R.T.: 0.003 min
 Response: 773496
 Conc: 140.81 ng/ml



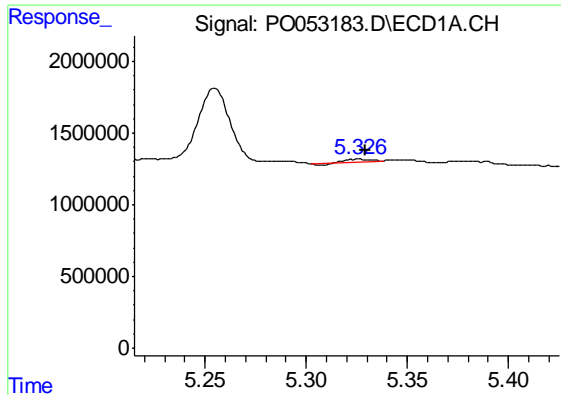
#20 AR-1242-5

R.T.: 6.230 min
 Delta R.T.: 0.000 min
 Response: 2098562
 Conc: 95.91 ng/ml



#20 AR-1242-5

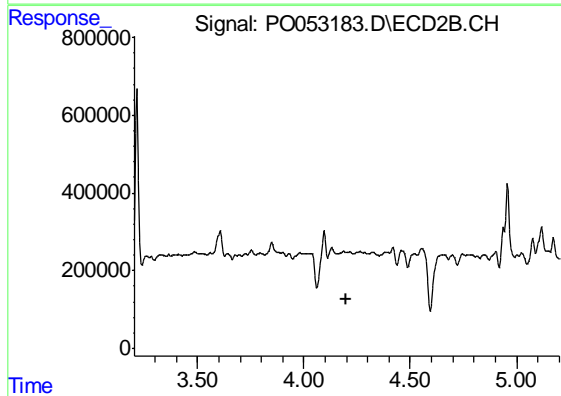
R.T.: 4.938 min
 Delta R.T.: -0.002 min
 Response: 1020905
 Conc: 134.00 ng/ml



#21 AR-1248-1

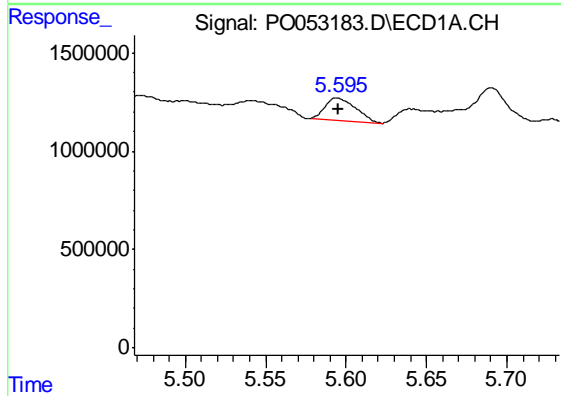
R.T.: 5.326 min
 Delta R.T.: -0.003 min
 Response: 110867
 Conc: 4.90 ng/ml

Instrument :
 ECD_O
 ClientSampled :
 TP-1



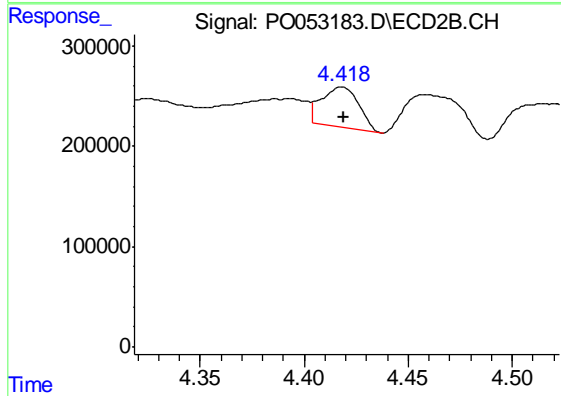
#21 AR-1248-1

R.T.: 0.000 min
 Exp R.T. : 4.202 min
 Response: 0
 Conc: N.D.



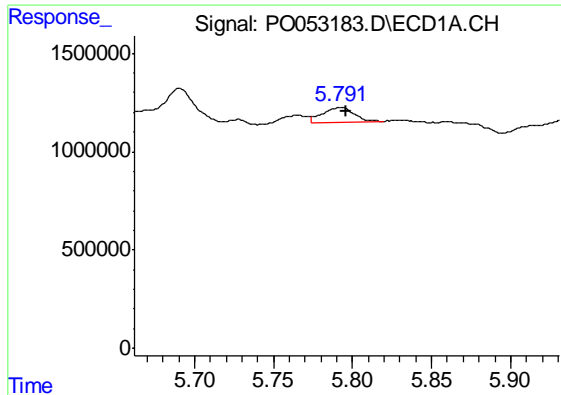
#22 AR-1248-2

R.T.: 5.595 min
 Delta R.T.: 0.000 min
 Response: 1539846
 Conc: 52.85 ng/ml



#22 AR-1248-2

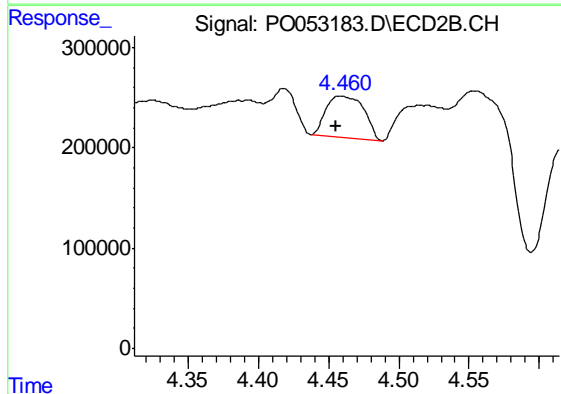
R.T.: 4.418 min
 Delta R.T.: -0.001 min
 Response: 503954
 Conc: 67.28 ng/ml



#23 AR-1248-3

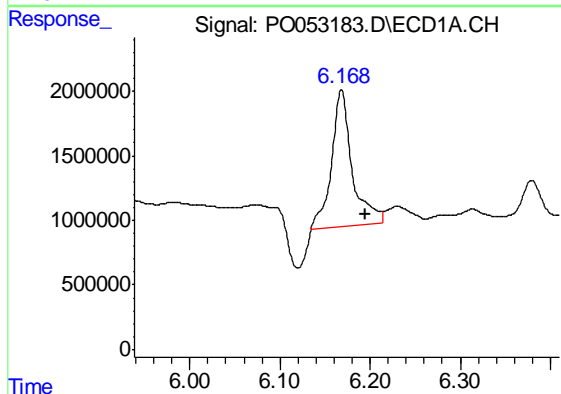
R.T.: 5.792 min
 Delta R.T.: -0.004 min
 Response: 1066145
 Conc: 32.12 ng/ml

Instrument :
 ECD_O
 ClientSampleId :
 TP-1



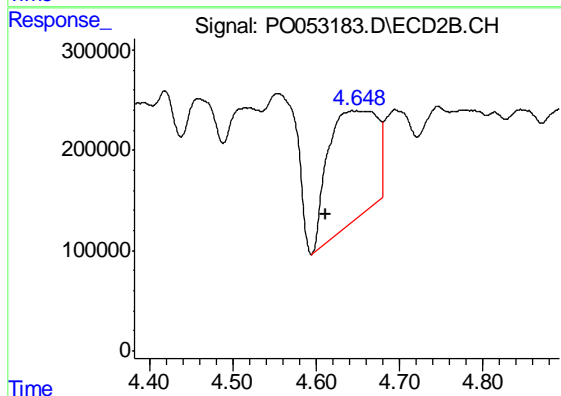
#23 AR-1248-3

R.T.: 4.458 min
 Delta R.T.: 0.003 min
 Response: 773496
 Conc: 98.50 ng/ml



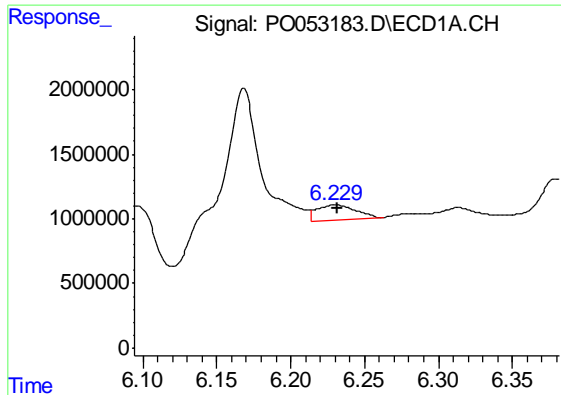
#24 AR-1248-4

R.T.: 6.168 min
 Delta R.T.: -0.026 min
 Response: 16787281
 Conc: 449.36 ng/ml



#24 AR-1248-4

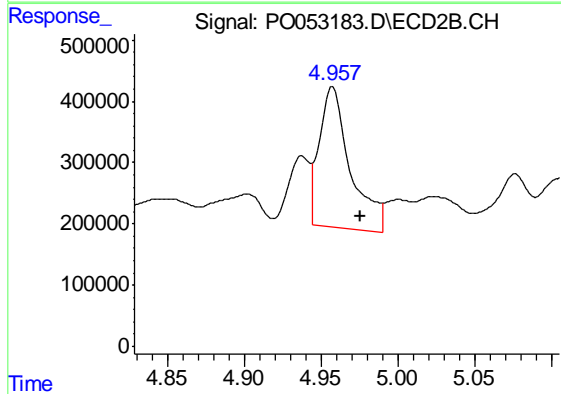
R.T.: 4.648 min
 Delta R.T.: 0.036 min
 Response: 4463257
 Conc: 472.91 ng/ml



#25 AR-1248-5

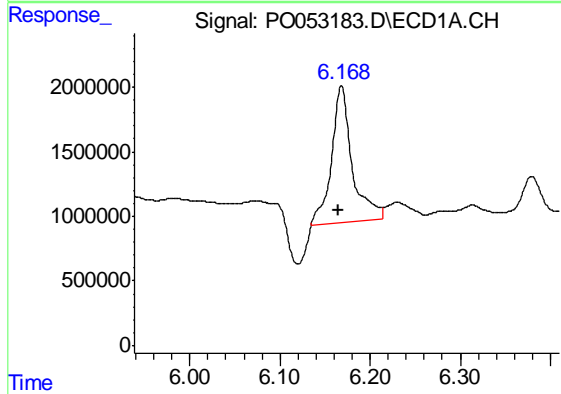
R.T.: 6.230 min
 Delta R.T.: -0.002 min
 Response: 2098562
 Conc: 58.90 ng/ml

Instrument :
 ECD_O
 ClientSampled :
 TP-1



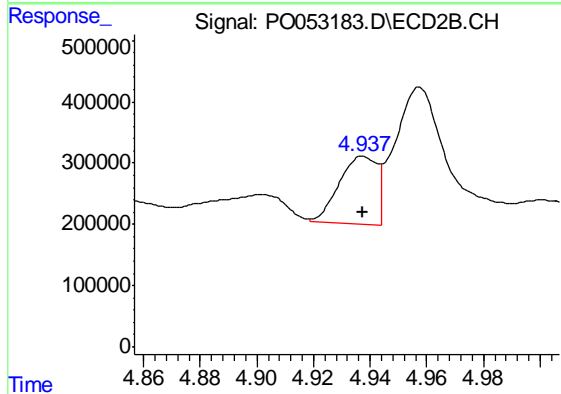
#25 AR-1248-5

R.T.: 4.957 min
 Delta R.T.: -0.018 min
 Response: 3235321
 Conc: 322.49 ng/ml



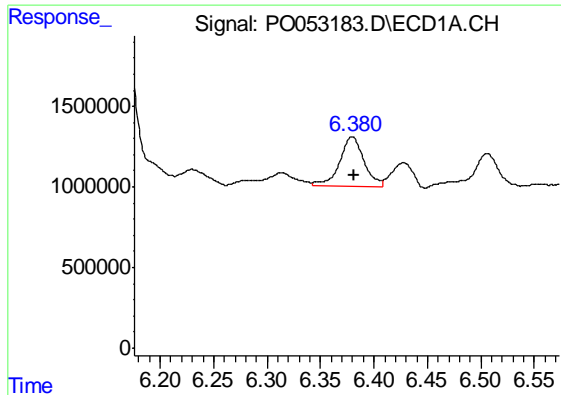
#26 AR-1254-1

R.T.: 6.168 min
 Delta R.T.: 0.002 min
 Response: 16787281
 Conc: 438.03 ng/ml



#26 AR-1254-1

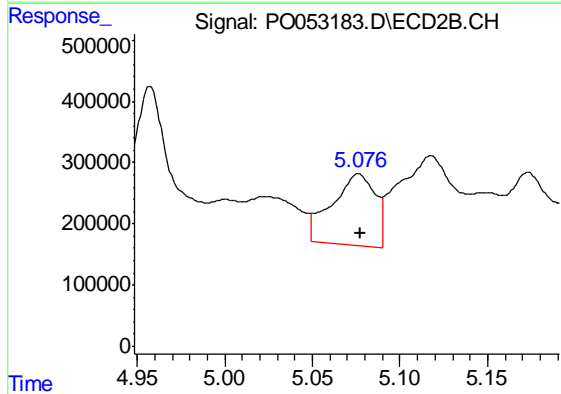
R.T.: 4.938 min
 Delta R.T.: 0.000 min
 Response: 1020905
 Conc: 62.27 ng/ml



#27 AR-1254-2

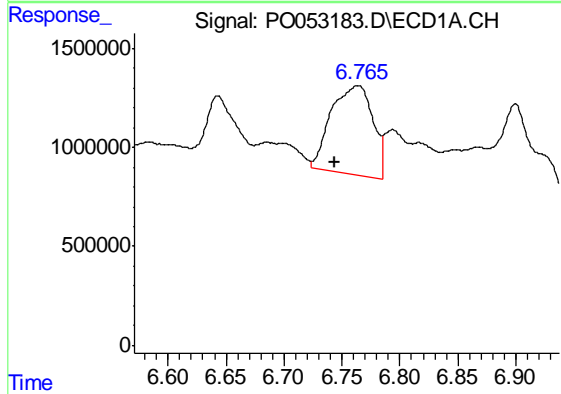
R.T.: 6.380 min
 Delta R.T.: -0.001 min
 Response: 4835505
 Conc: 81.54 ng/ml

Instrument :
 ECD_O
 ClientSampled :
 TP-1



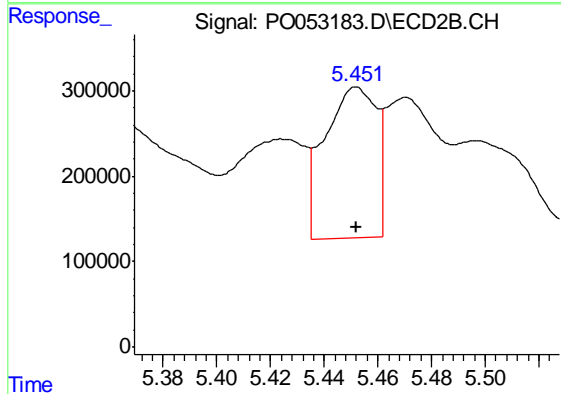
#27 AR-1254-2

R.T.: 5.076 min
 Delta R.T.: -0.001 min
 Response: 2003931
 Conc: 142.82 ng/ml



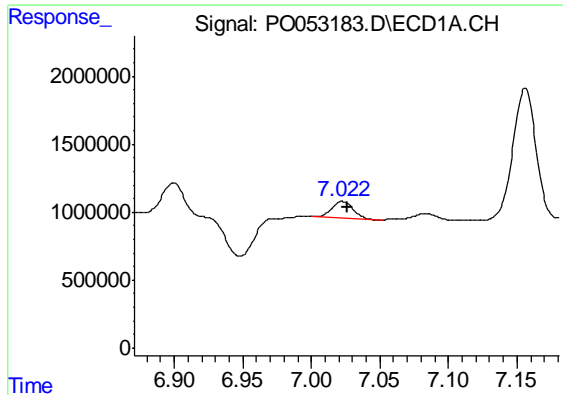
#28 AR-1254-3

R.T.: 6.765 min
 Delta R.T.: 0.020 min
 Response: 11232070
 Conc: 182.13 ng/ml



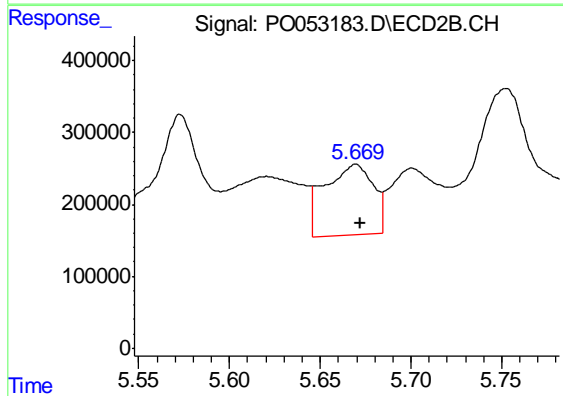
#28 AR-1254-3

R.T.: 5.452 min
 Delta R.T.: 0.000 min
 Response: 2351763
 Conc: 104.24 ng/ml

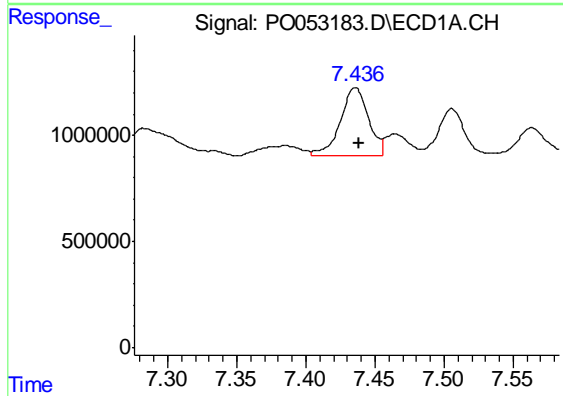


#29 AR-1254-4
 R.T.: 7.023 min
 Delta R.T.: -0.004 min
 Response: 1312059
 Conc: 28.55 ng/ml

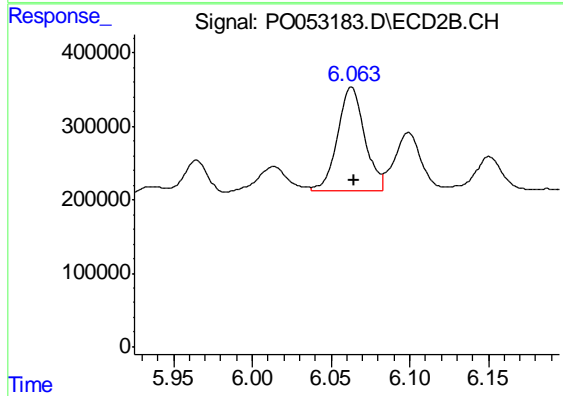
Instrument :
 ECD_O
 ClientSampled :
 TP-1



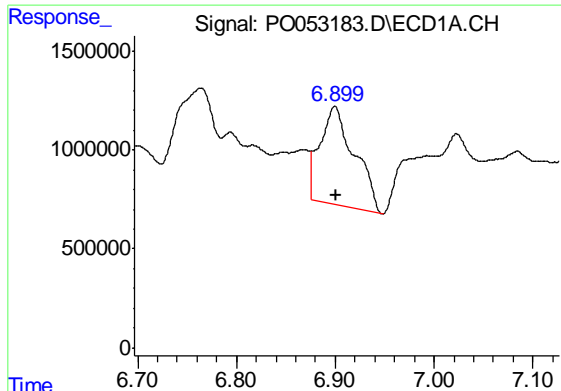
#29 AR-1254-4
 R.T.: 5.670 min
 Delta R.T.: -0.002 min
 Response: 1832504
 Conc: 120.89 ng/ml



#30 AR-1254-5
 R.T.: 7.436 min
 Delta R.T.: -0.003 min
 Response: 4531944
 Conc: 99.85 ng/ml



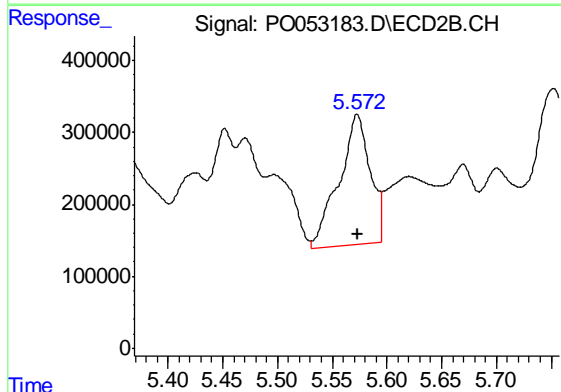
#30 AR-1254-5
 R.T.: 6.063 min
 Delta R.T.: -0.002 min
 Response: 1717901
 Conc: 85.81 ng/ml



#31 AR-1260-1

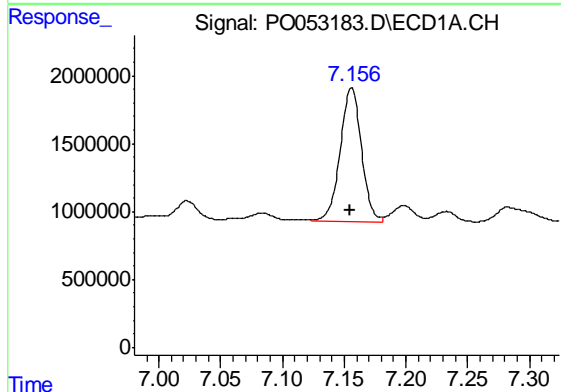
R.T.: 6.899 min
 Delta R.T.: -0.001 min
 Response: 12011057
 Conc: 267.86 ng/ml

Instrument :
 ECD_O
 ClientSampled :
 TP-1



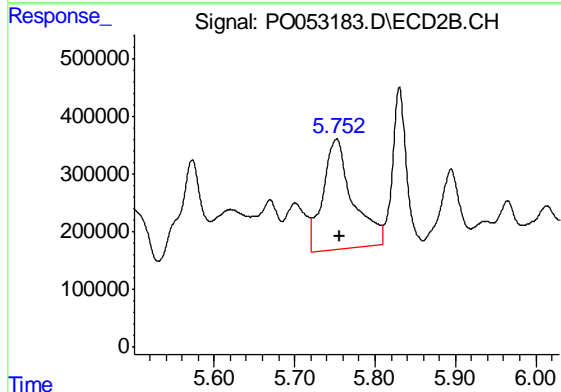
#31 AR-1260-1

R.T.: 5.573 min
 Delta R.T.: 0.000 min
 Response: 3595338
 Conc: 234.23 ng/ml



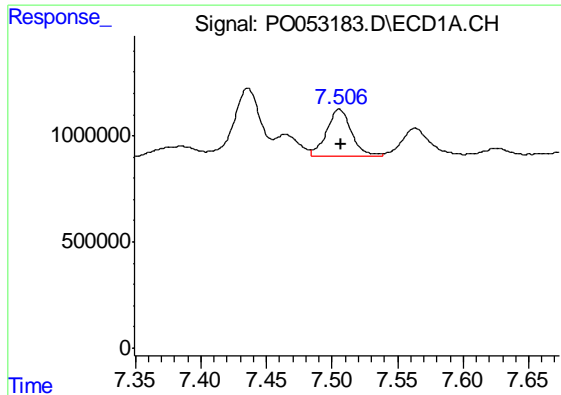
#32 AR-1260-2

R.T.: 7.156 min
 Delta R.T.: 0.002 min
 Response: 11793908
 Conc: 212.35 ng/ml



#32 AR-1260-2

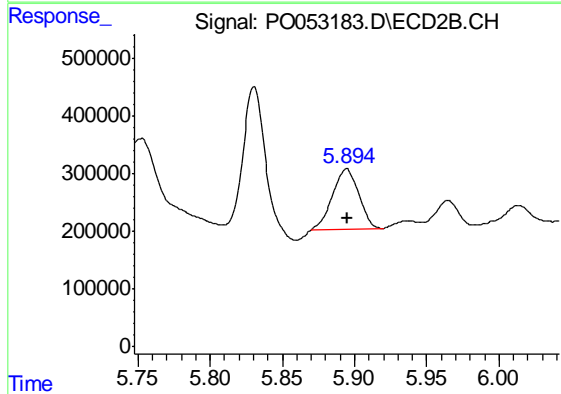
R.T.: 5.753 min
 Delta R.T.: -0.004 min
 Response: 4924641
 Conc: 257.33 ng/ml



#33 AR-1260-3

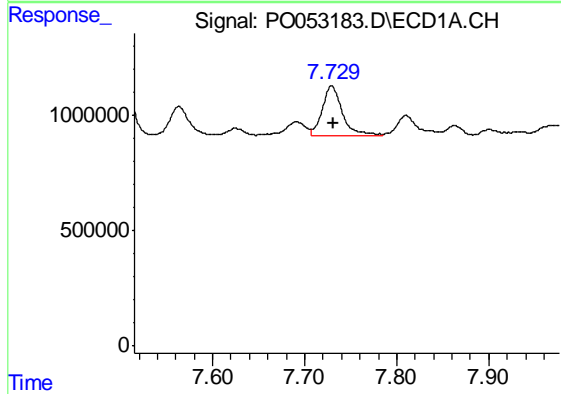
R.T.: 7.506 min
 Delta R.T.: -0.001 min
 Response: 2878245
 Conc: 82.20 ng/ml

Instrument :
 ECD_O
 ClientSampled :
 TP-1



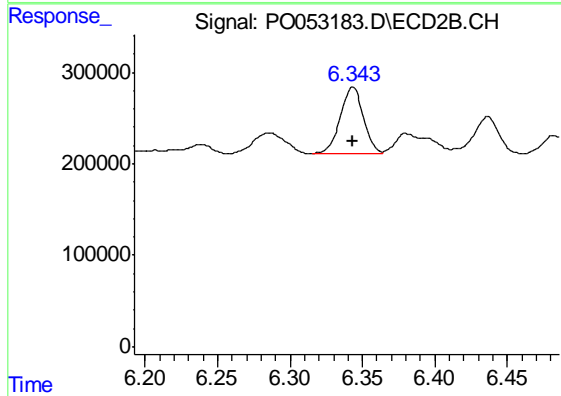
#33 AR-1260-3

R.T.: 5.894 min
 Delta R.T.: 0.000 min
 Response: 1331874
 Conc: 77.00 ng/ml



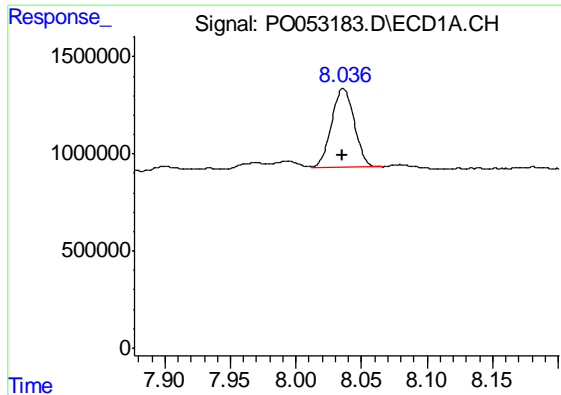
#34 AR-1260-4

R.T.: 7.729 min
 Delta R.T.: -0.002 min
 Response: 3261555
 Conc: 83.89 ng/ml



#34 AR-1260-4

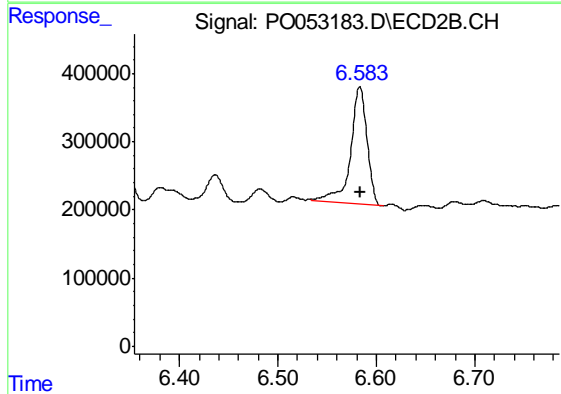
R.T.: 6.343 min
 Delta R.T.: 0.000 min
 Response: 806701
 Conc: 69.74 ng/ml



#35 AR-1260-5

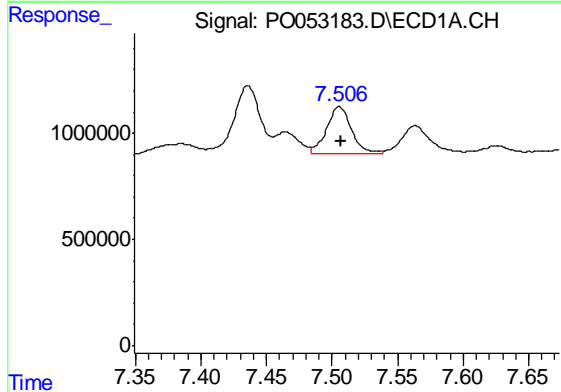
R.T.: 8.036 min
 Delta R.T.: 0.000 min
 Response: 4960839
 Conc: 64.28 ng/ml

Instrument :
 ECD_O
 ClientSampled :
 TP-1



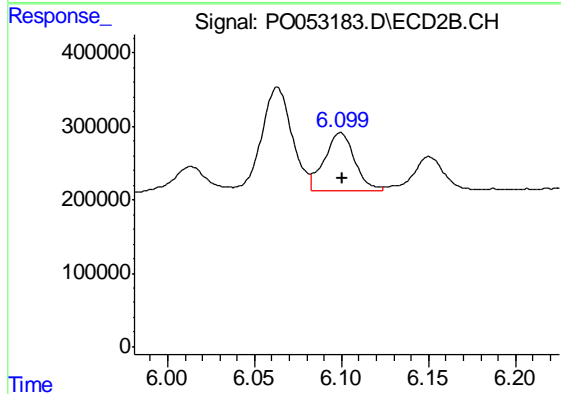
#35 AR-1260-5

R.T.: 6.583 min
 Delta R.T.: 0.000 min
 Response: 2020288
 Conc: 70.13 ng/ml



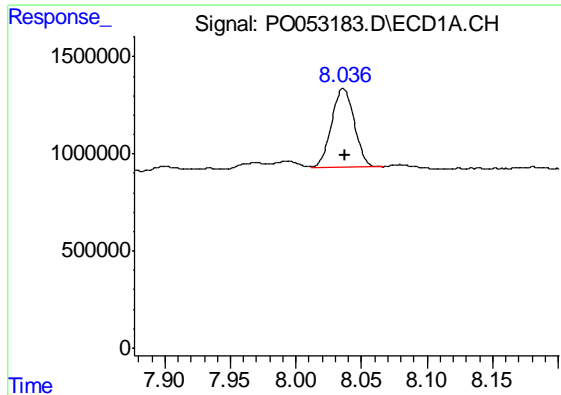
#36 AR-1262-1

R.T.: 7.506 min
 Delta R.T.: -0.002 min
 Response: 2878245
 Conc: 51.65 ng/ml



#36 AR-1262-1

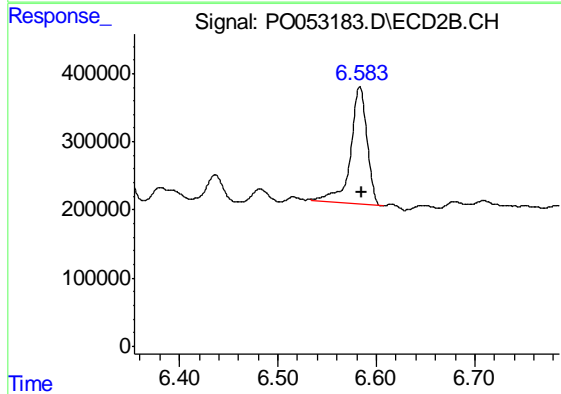
R.T.: 6.099 min
 Delta R.T.: -0.001 min
 Response: 939470
 Conc: 48.01 ng/ml



#37 AR-1262-2

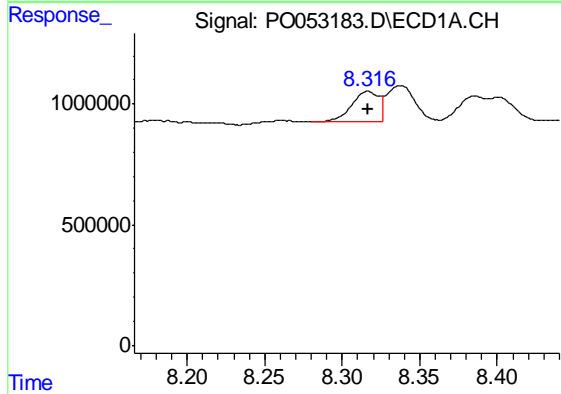
R.T.: 8.036 min
 Delta R.T.: 0.000 min
 Response: 4960839
 Conc: 53.16 ng/ml

Instrument :
 ECD_O
 ClientSampled :
 TP-1



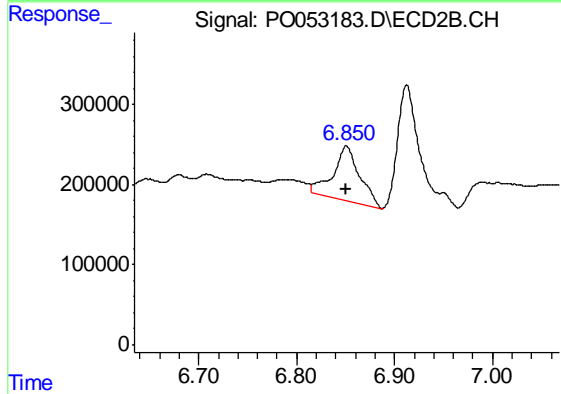
#37 AR-1262-2

R.T.: 6.583 min
 Delta R.T.: -0.001 min
 Response: 2020288
 Conc: 60.84 ng/ml



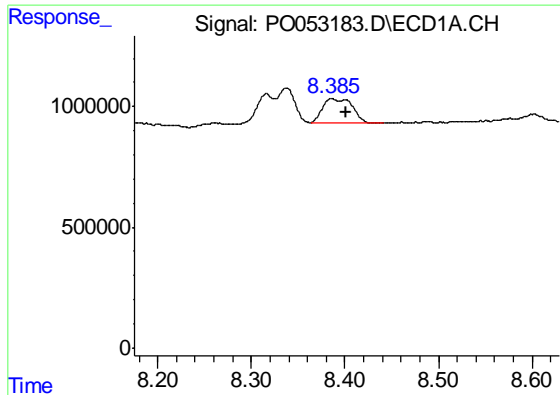
#38 AR-1262-3

R.T.: 8.316 min
 Delta R.T.: 0.000 min
 Response: 1485937
 Conc: 35.03 ng/ml



#38 AR-1262-3

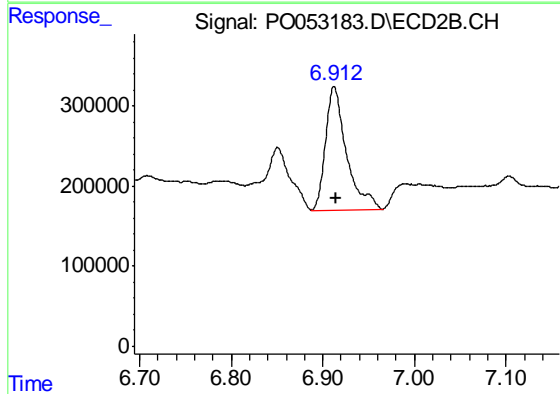
R.T.: 6.851 min
 Delta R.T.: 0.000 min
 Response: 1291025
 Conc: 99.70 ng/ml



#39 AR-1262-4

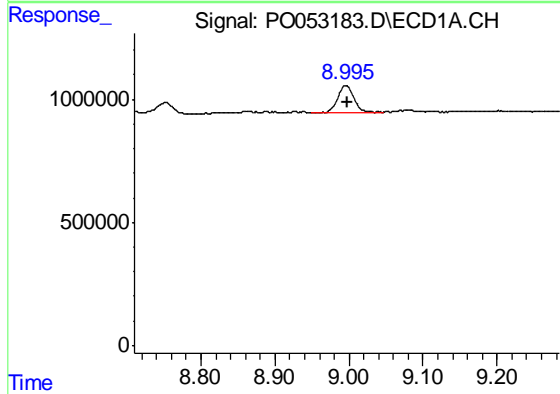
R.T.: 8.386 min
 Delta R.T.: -0.016 min
 Response: 2265762
 Conc: 46.84 ng/ml

Instrument :
 ECD_O
 ClientSampled :
 TP-1



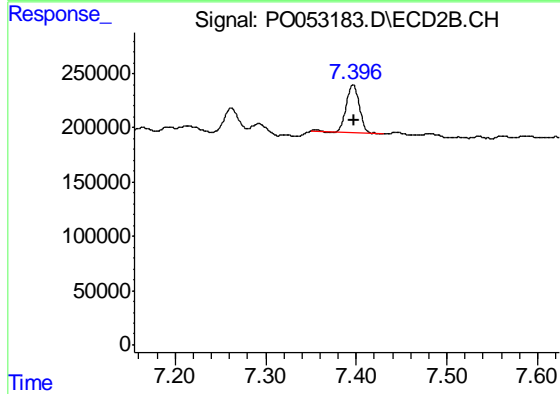
#39 AR-1262-4

R.T.: 6.912 min
 Delta R.T.: -0.001 min
 Response: 2444906
 Conc: 100.70 ng/ml



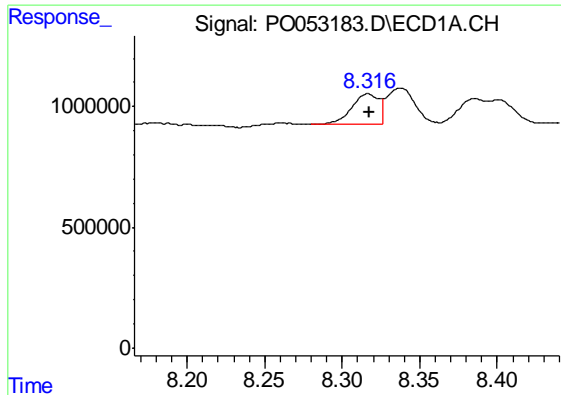
#40 AR-1262-5

R.T.: 8.995 min
 Delta R.T.: -0.003 min
 Response: 1696422
 Conc: 50.05 ng/ml



#40 AR-1262-5

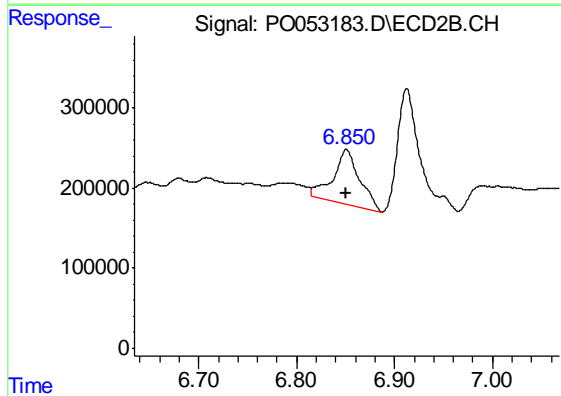
R.T.: 7.397 min
 Delta R.T.: 0.000 min
 Response: 432929
 Conc: 38.35 ng/ml



#41 AR-1268-1

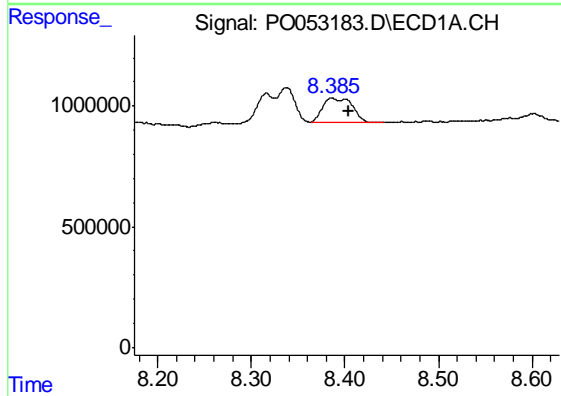
R.T.: 8.316 min
 Delta R.T.: -0.001 min
 Response: 1485937
 Conc: 11.45 ng/ml

Instrument :
 ECD_O
 ClientSampled :
 TP-1



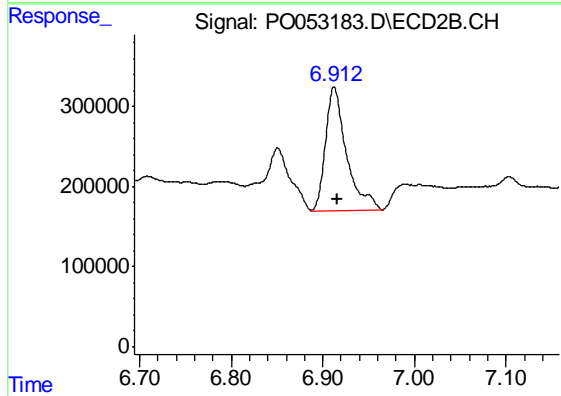
#41 AR-1268-1

R.T.: 6.851 min
 Delta R.T.: 0.000 min
 Response: 1291025
 Conc: 29.72 ng/ml



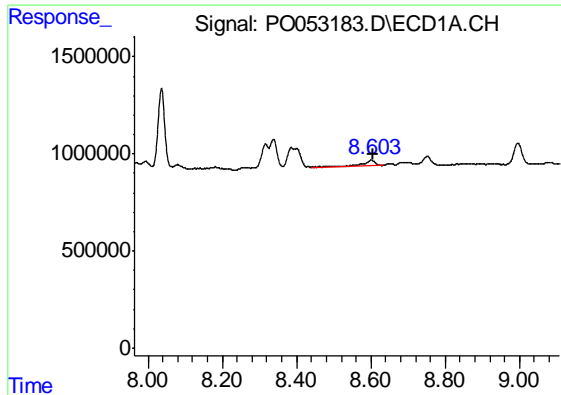
#42 AR-1268-2

R.T.: 8.386 min
 Delta R.T.: -0.018 min
 Response: 2265762
 Conc: 18.56 ng/ml



#42 AR-1268-2

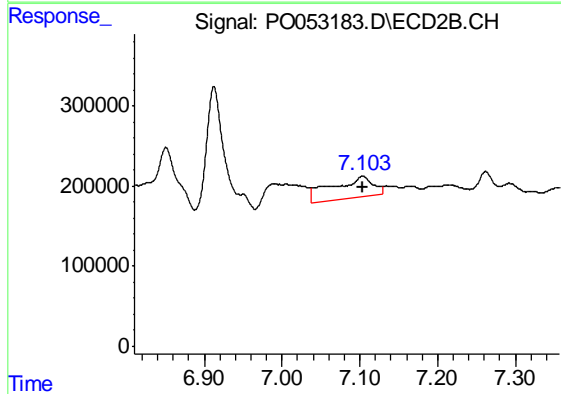
R.T.: 6.912 min
 Delta R.T.: -0.003 min
 Response: 2444906
 Conc: 59.45 ng/ml



#43 AR-1268-3

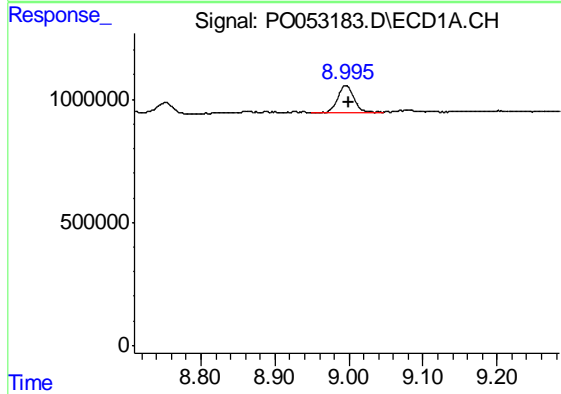
R.T.: 8.602 min
 Delta R.T.: -0.002 min
 Response: 681418
 Conc: 6.35 ng/ml

Instrument :
 ECD_O
 ClientSampled :
 TP-1



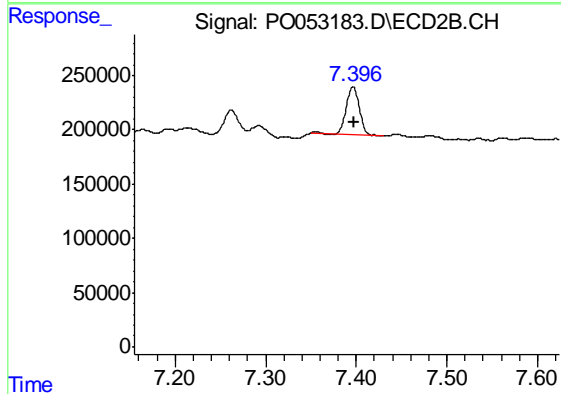
#43 AR-1268-3

R.T.: 7.104 min
 Delta R.T.: 0.000 min
 Response: 937163
 Conc: 26.80 ng/ml



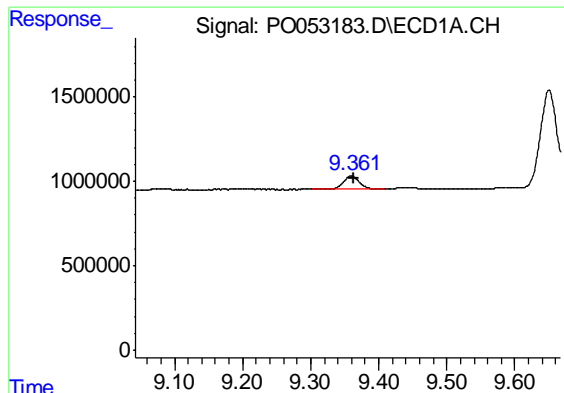
#44 AR-1268-4

R.T.: 8.995 min
 Delta R.T.: -0.005 min
 Response: 1696422
 Conc: 39.44 ng/ml



#44 AR-1268-4

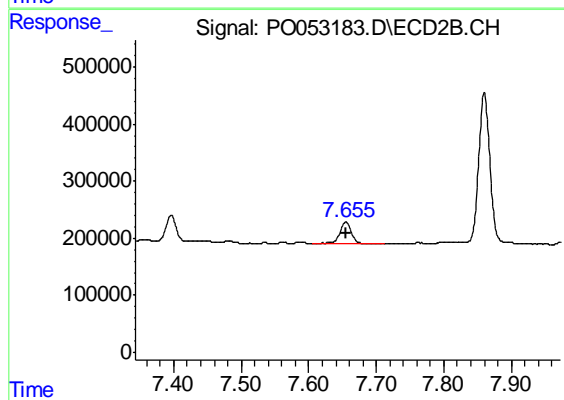
R.T.: 7.397 min
 Delta R.T.: 0.000 min
 Response: 432929
 Conc: 29.91 ng/ml



#45 AR-1268-5

R.T.: 9.360 min
Delta R.T.: -0.003 min
Response: 1285358
Conc: 3.88 ng/ml

Instrument :
ECD_O
ClientSampleId :
TP-1



#45 AR-1268-5

R.T.: 7.655 min
Delta R.T.: 0.000 min
Response: 467432
Conc: 4.47 ng/ml