

Data Path : Z:\pestpcbsrv\HPCHEM1\ECD_0\Data\P0010419\
 Data File : P0053178.D
 Signal(s) : Signal #1: ECD1A.CH Signal #2: ECD2B.CH
 Acq On : 04 Jan 2019 10:40
 Operator : SM/SJ
 Sample : PB116025BS
 Misc :
 ALS Vial : 5 Sample Multiplier: 1

Instrument :
 ECD_0
ClientSampleId :
 PB116025BS

Manual Integrations
APPROVED
 Sohil
 1/7/2019 2:17:04 PM

Integration File signal 1: autoint1.e
 Integration File signal 2: autoint2.e
 Quant Time: Jan 04 22:06:19 2019
 Quant Method : Z:\pestpcbsrv\HPCHEM1\ECD_0\methods\P0010219.M
 Quant Title : GC EXTRACTABLES
 QLast Update : Wed Jan 02 14:46:04 2019
 Response via : Initial Calibration
 Integrator: ChemStation 6890 Scale Mode: Small noise peaks clipped

Volume Inj. : 2 µl
 Signal #1 Phase : ZB-MR1 Signal #2 Phase: ZB-MR2
 Signal #1 Info : 30Mx0.32mmx 0.50µ Signal #2 Info : 30M x 0.32mm x 0.25µm

Compound	RT#1	RT#2	Resp#1	Resp#2	ng/ml	ng/ml

System Monitoring Compounds						
1) SA Tetrachlo...	4.179	3.213	33138125	4865101	25.327	21.681m
2) SA Decachlor...	9.647	7.858	17261886	5459084	21.786m	21.237
Target Compounds						
3) L1 AR-1016-1	5.326	4.201	9537430	2025212	248.802	224.647
4) L1 AR-1016-2	5.348	4.216	13962992	3082638	248.287	223.792
5) L1 AR-1016-3	5.408	4.376	8284054	1616627	245.846	223.303
6) L1 AR-1016-4	5.506	4.418	6714344	1246083	244.563	229.333
7) L1 AR-1016-5	5.793	4.611	6094834	1601354	231.171	219.297
31) L7 AR-1260-1	6.897	5.572	9008356	3140452	200.900	204.592
32) L7 AR-1260-2	7.152	5.756	10686664	3786153	192.413	197.838
33) L7 AR-1260-3	7.504	5.894	6651081	3429847	189.948	198.288
34) L7 AR-1260-4	7.729	6.342	7220739	2481887	185.724	214.549
35) L7 AR-1260-5	8.034	6.582	15235553	5950978	197.408	206.576

(f)=RT Delta > 1/2 Window (#)=Amounts differ by > 25% (m)=manual int.

Data Path : Z:\pestpcbsrv\HPCHEM1\ECD_O\Data\P0010419\
 Data File : P0053178.D
 Signal(s) : Signal #1: ECD1A.CH Signal #2: ECD2B.CH
 Acq On : 04 Jan 2019 10:40
 Operator : SM/SJ
 Sample : PB116025BS
 Misc :
 ALS Vial : 5 Sample Multiplier: 1

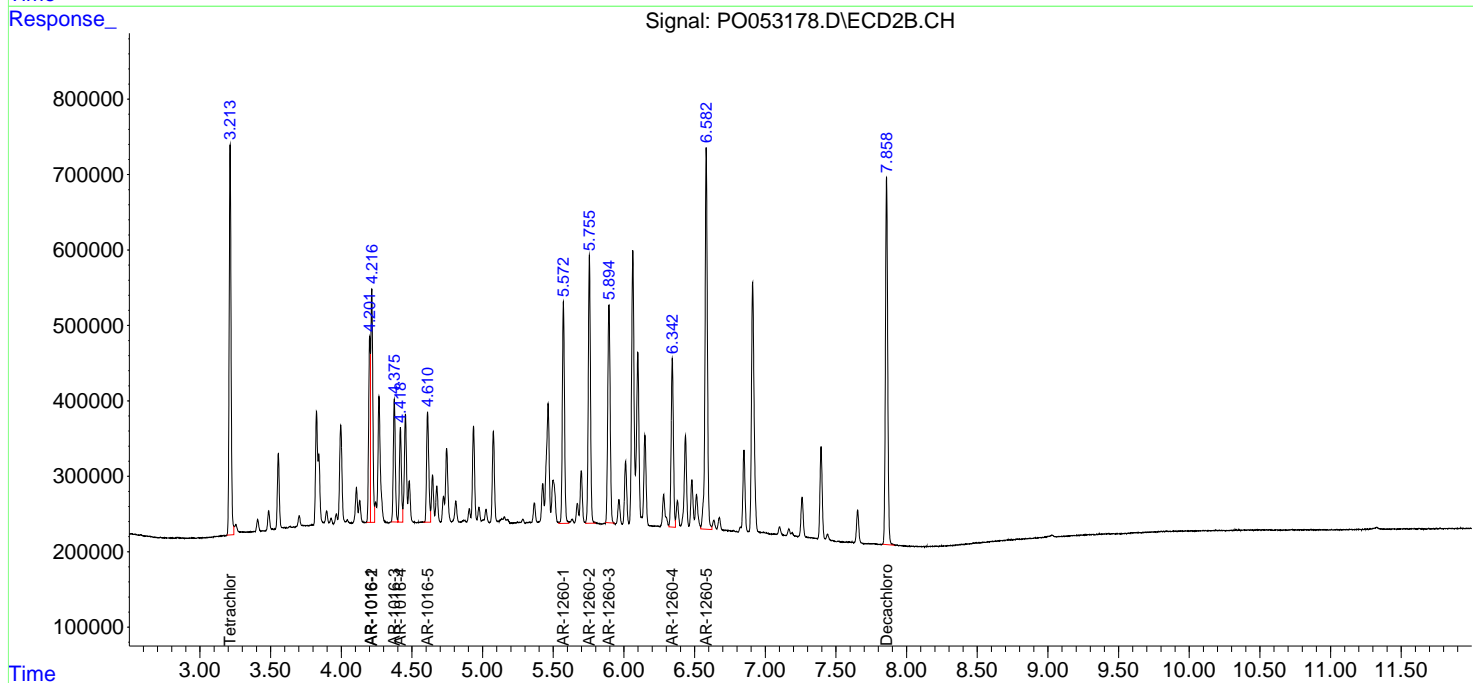
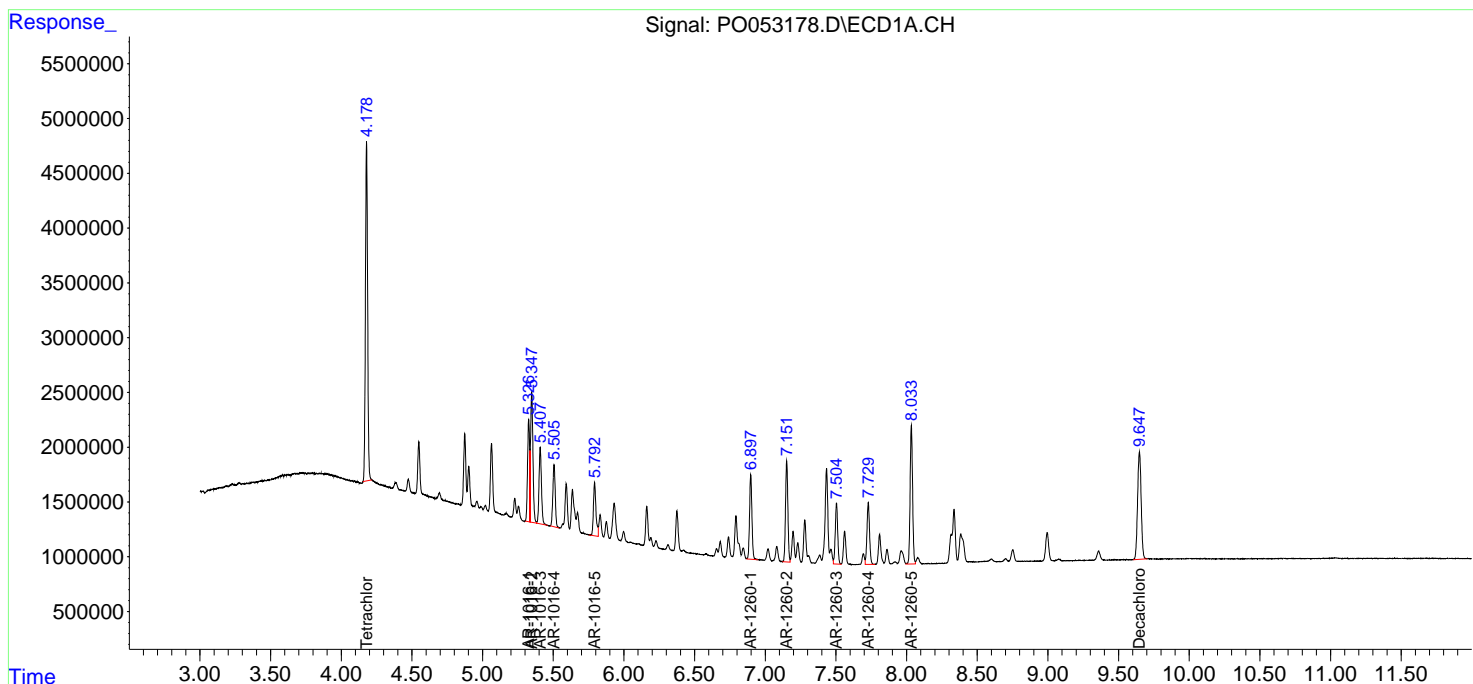
Instrument :
 ECD_O
 ClientSampled :
 PB116025BS

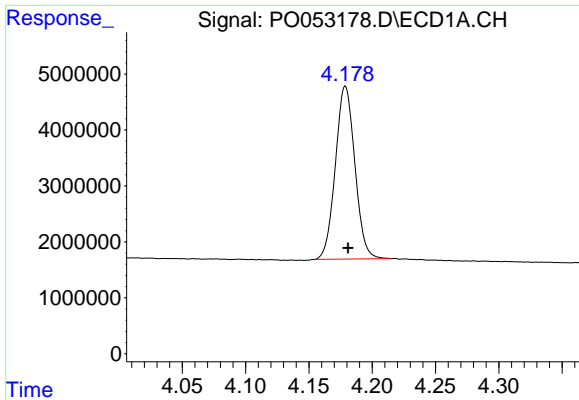
Manual Integrations
 APPROVED

Sohil
 1/7/2019 2:17:04 PM

Integration File signal 1: autoint1.e
 Integration File signal 2: autoint2.e
 Quant Time: Jan 04 22:06:19 2019
 Quant Method : Z:\pestpcbsrv\HPCHEM1\ECD_O\methods\P0010219.M
 Quant Title : GC EXTRACTABLES
 QLast Update : Wed Jan 02 14:46:04 2019
 Response via : Initial Calibration
 Integrator: ChemStation 6890 Scale Mode: Small noise peaks clipped

Volume Inj. : 2 µl
 Signal #1 Phase : ZB-MR1 Signal #2 Phase: ZB-MR2
 Signal #1 Info : 30Mx0.32mmx 0.50µ Signal #2 Info : 30M x 0.32mm x 0.25µm

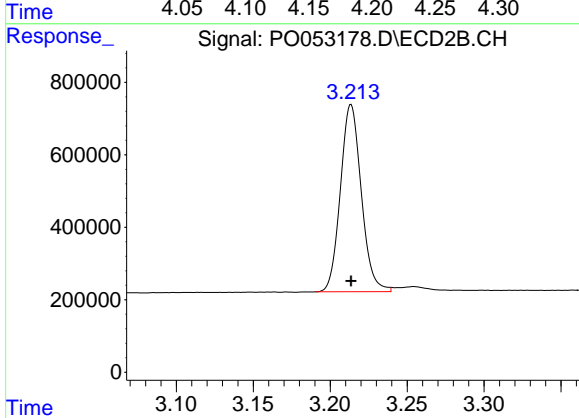




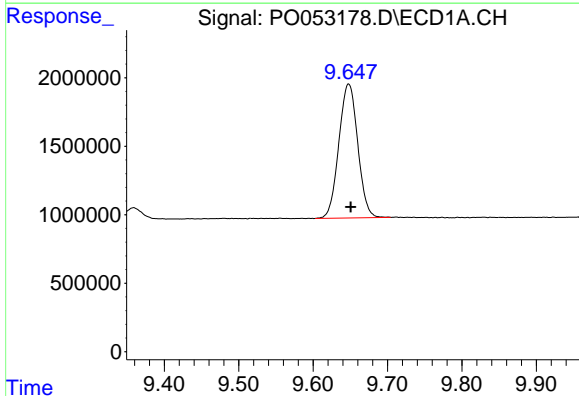
#1 Tetrachloro-m-xylene
 R.T.: 4.179 min
 Delta R.T.: -0.002 min
 Response: 33138125
 Conc: 25.33 ng/ml

Instrument :
 ECD_O
 ClientSampled :
 PB116025BS

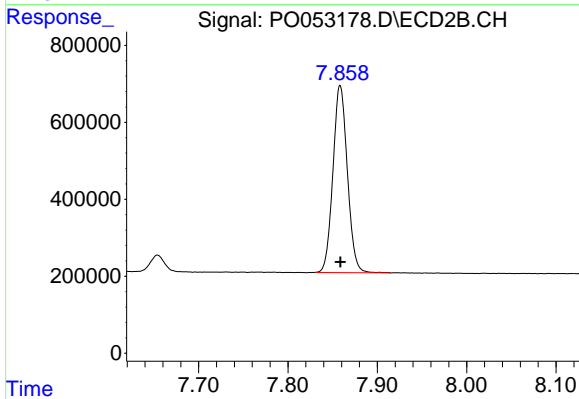
Manual Integrations
 APPROVED
 Sohil
 1/7/2019 2:17:04 PM



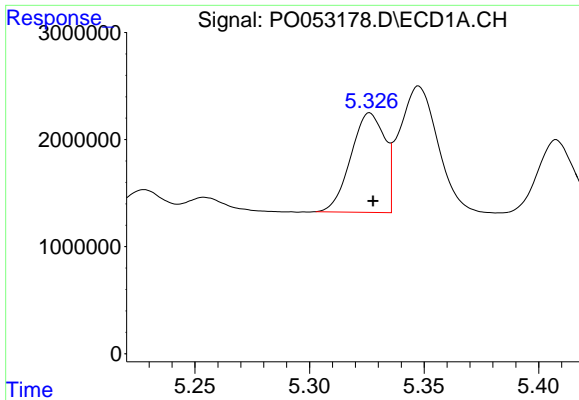
#1 Tetrachloro-m-xylene
 R.T.: 3.213 min
 Delta R.T.: 0.000 min
 Response: 4865101
 Conc: 21.68 ng/ml m



#2 Decachlorobiphenyl
 R.T.: 9.647 min
 Delta R.T.: -0.004 min
 Response: 17261886
 Conc: 21.79 ng/ml m



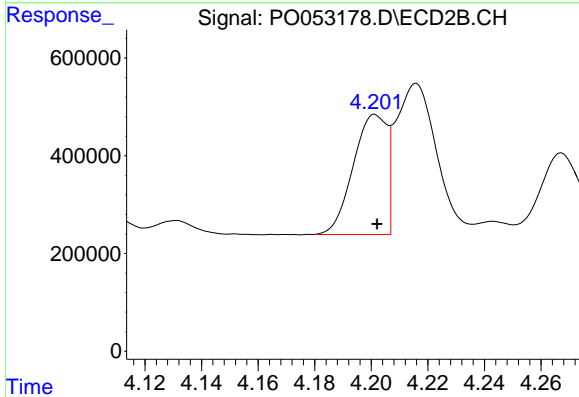
#2 Decachlorobiphenyl
 R.T.: 7.858 min
 Delta R.T.: 0.000 min
 Response: 5459084
 Conc: 21.24 ng/ml



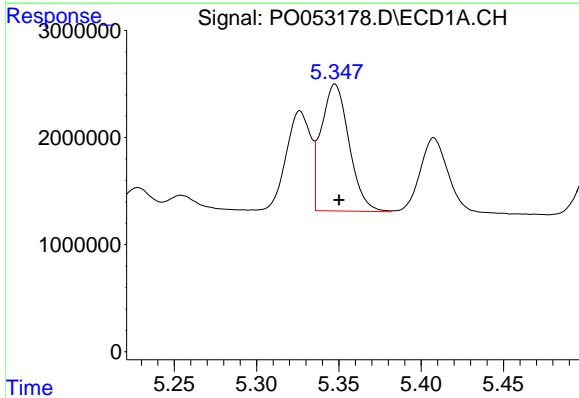
#3 AR-1016-1
 R.T.: 5.326 min
 Delta R.T.: -0.001 min
 Response: 9537430
 Conc: 248.80 ng/ml

Instrument :
 ECD_O
ClientSampled :
 PB116025BS

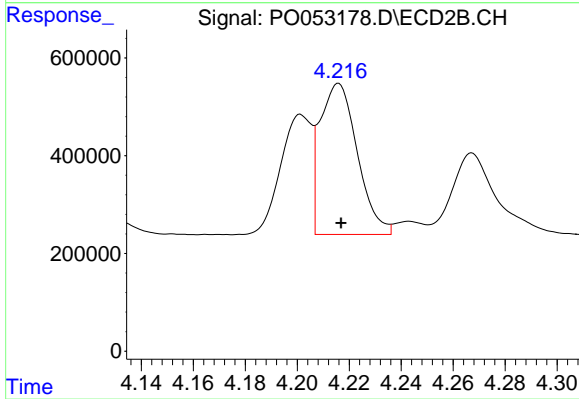
Manual Integrations
APPROVED
 Sohil
 1/7/2019 2:17:04 PM



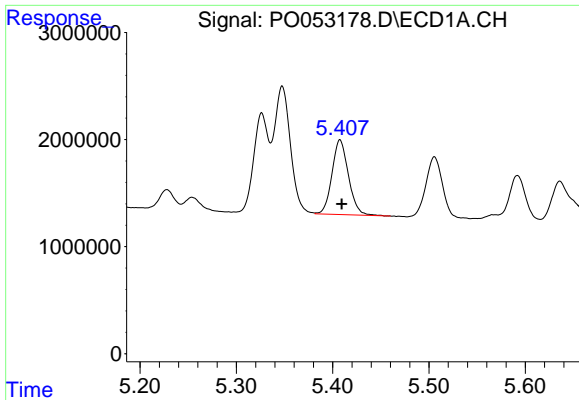
#3 AR-1016-1
 R.T.: 4.201 min
 Delta R.T.: 0.000 min
 Response: 2025212
 Conc: 224.65 ng/ml



#4 AR-1016-2
 R.T.: 5.348 min
 Delta R.T.: -0.002 min
 Response: 13962992
 Conc: 248.29 ng/ml



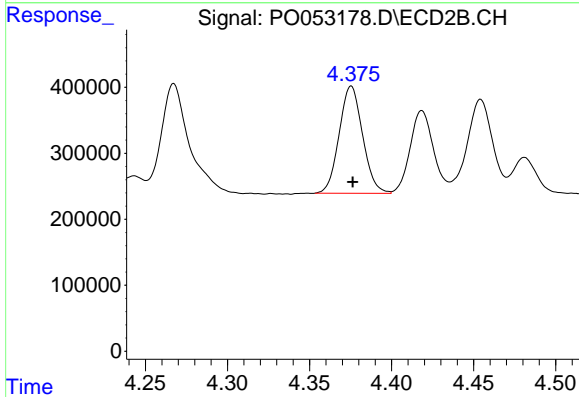
#4 AR-1016-2
 R.T.: 4.216 min
 Delta R.T.: 0.000 min
 Response: 3082638
 Conc: 223.79 ng/ml



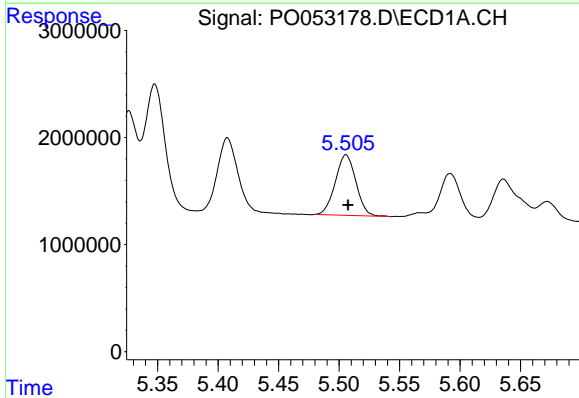
#5 AR-1016-3
 R.T.: 5.408 min
 Delta R.T.: -0.002 min
 Response: 8284054
 Conc: 245.85 ng/ml

Instrument :
 ECD_O
ClientSampled :
 PB116025BS

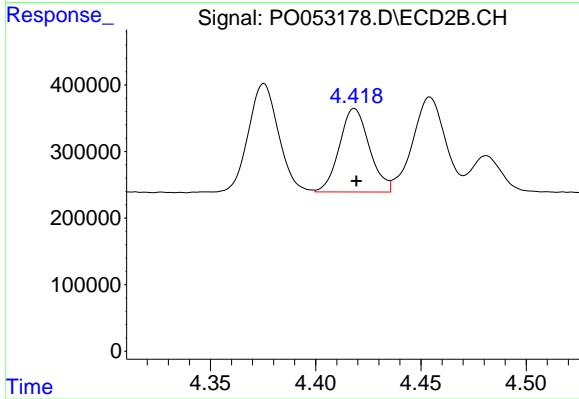
Manual Integrations
APPROVED
 Sohil
 1/7/2019 2:17:04 PM



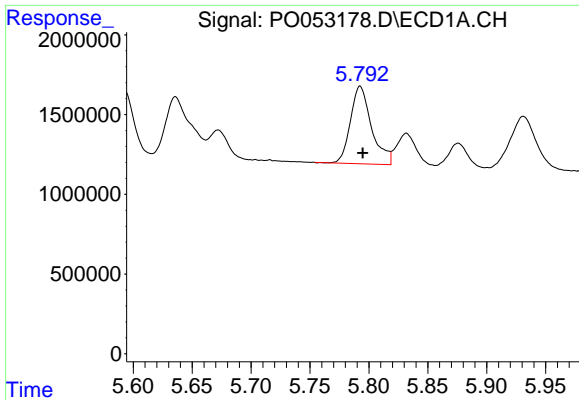
#5 AR-1016-3
 R.T.: 4.376 min
 Delta R.T.: 0.000 min
 Response: 1616627
 Conc: 223.30 ng/ml



#6 AR-1016-4
 R.T.: 5.506 min
 Delta R.T.: -0.002 min
 Response: 6714344
 Conc: 244.56 ng/ml



#6 AR-1016-4
 R.T.: 4.418 min
 Delta R.T.: 0.000 min
 Response: 1246083
 Conc: 229.33 ng/ml

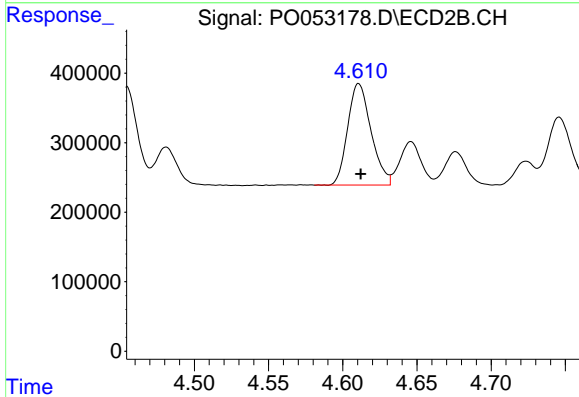


#7 AR-1016-5

R.T.: 5.793 min
 Delta R.T.: -0.002 min
 Response: 6094834
 Conc: 231.17 ng/ml

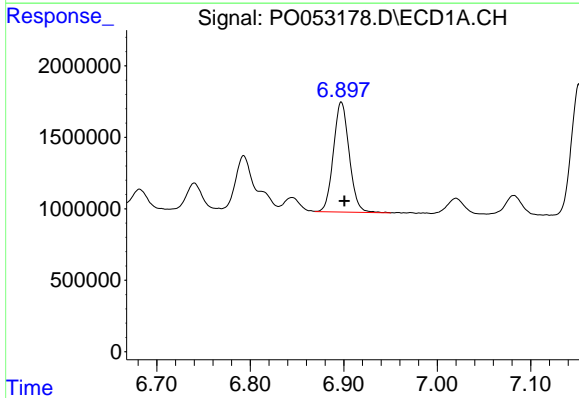
Instrument :
 ECD_O
ClientSampled :
 PB116025BS

Manual Integrations
APPROVED
 Sohil
 1/7/2019 2:17:04 PM



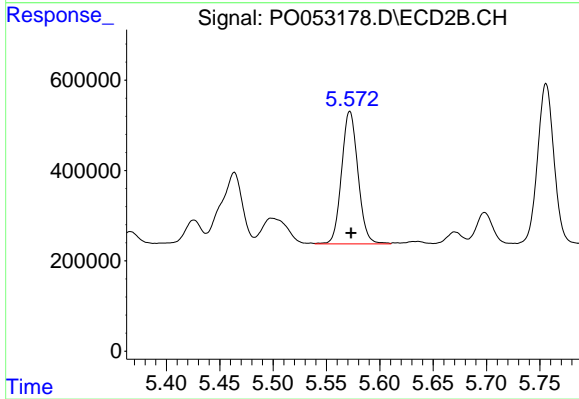
#7 AR-1016-5

R.T.: 4.611 min
 Delta R.T.: -0.001 min
 Response: 1601354
 Conc: 219.30 ng/ml



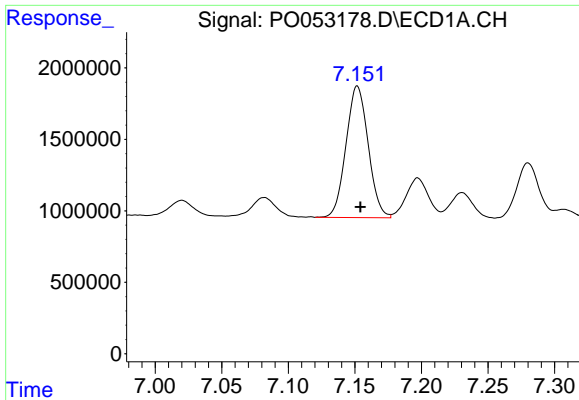
#31 AR-1260-1

R.T.: 6.897 min
 Delta R.T.: -0.003 min
 Response: 9008356
 Conc: 200.90 ng/ml



#31 AR-1260-1

R.T.: 5.572 min
 Delta R.T.: -0.001 min
 Response: 3140452
 Conc: 204.59 ng/ml

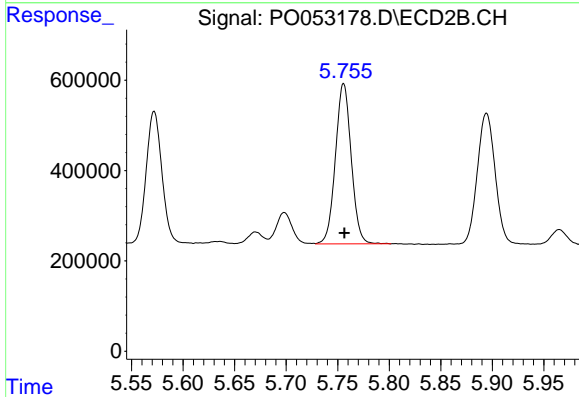


#32 AR-1260-2

R.T.: 7.152 min
 Delta R.T.: -0.002 min
 Response: 10686664
 Conc: 192.41 ng/ml

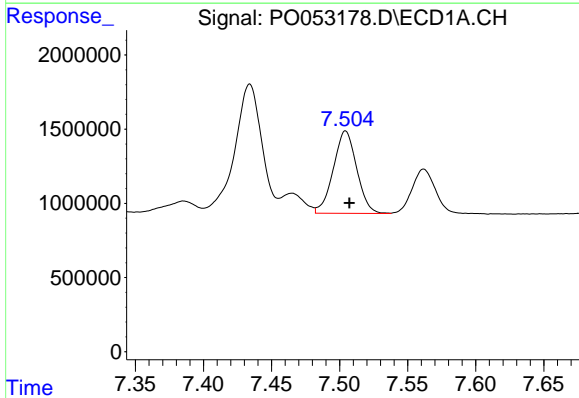
Instrument :
 ECD_O
 ClientSampled :
 PB116025BS

Manual Integrations
 APPROVED
 Sohil
 1/7/2019 2:17:04 PM



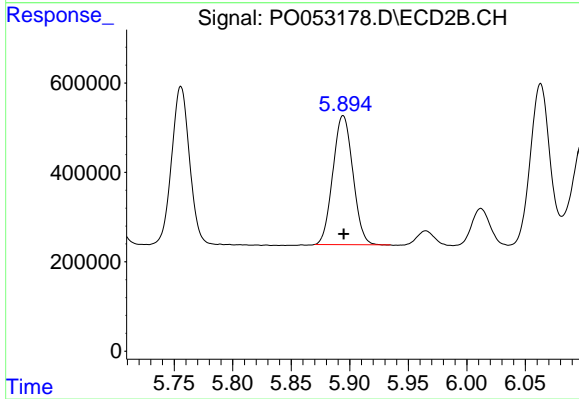
#32 AR-1260-2

R.T.: 5.756 min
 Delta R.T.: 0.000 min
 Response: 3786153
 Conc: 197.84 ng/ml



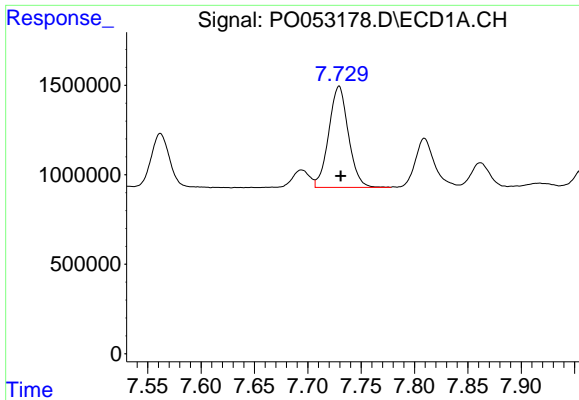
#33 AR-1260-3

R.T.: 7.504 min
 Delta R.T.: -0.003 min
 Response: 6651081
 Conc: 189.95 ng/ml



#33 AR-1260-3

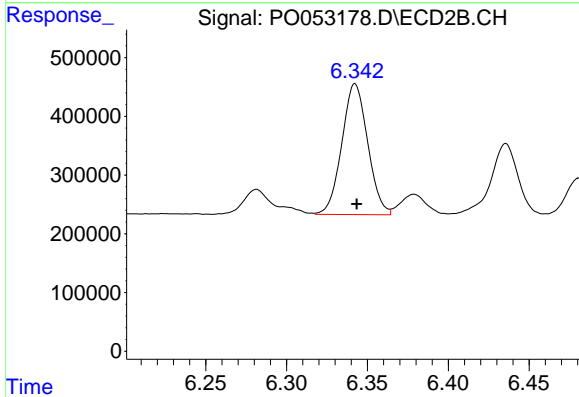
R.T.: 5.894 min
 Delta R.T.: 0.000 min
 Response: 3429847
 Conc: 198.29 ng/ml



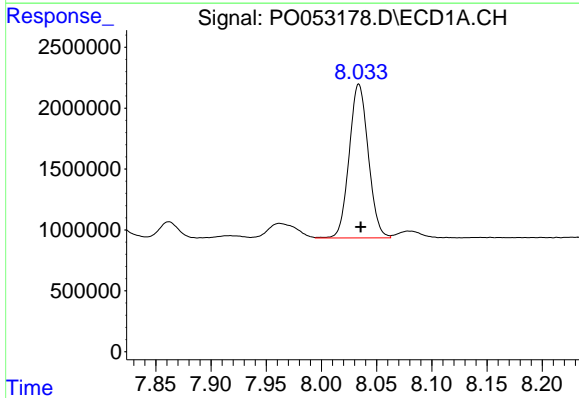
#34 AR-1260-4
 R.T.: 7.729 min
 Delta R.T.: -0.002 min
 Response: 7220739
 Conc: 185.72 ng/ml

Instrument :
 ECD_O
ClientSampled :
 PB116025BS

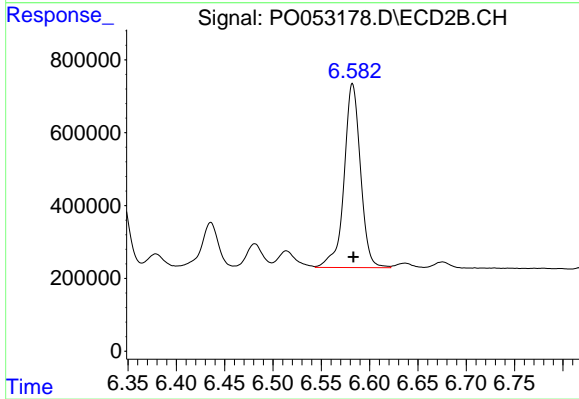
Manual Integrations
APPROVED
 Sohil
 1/7/2019 2:17:04 PM



#34 AR-1260-4
 R.T.: 6.342 min
 Delta R.T.: -0.001 min
 Response: 2481887
 Conc: 214.55 ng/ml



#35 AR-1260-5
 R.T.: 8.034 min
 Delta R.T.: -0.002 min
 Response: 15235553
 Conc: 197.41 ng/ml



#35 AR-1260-5
 R.T.: 6.582 min
 Delta R.T.: -0.001 min
 Response: 5950978
 Conc: 206.58 ng/ml