

Data Path : Z:\pestpcbsrv\HPCHEM1\ECD_0\Data\P0010419\
 Data File : P0053244.D
 Signal(s) : Signal #1: ECD1A.CH Signal #2: ECD2B.CH
 Acq On : 05 Jan 2019 8:10
 Operator : SM/SJ
 Sample : K1041-05 5X
 Misc :
 ALS Vial : 65 Sample Multiplier: 1

Instrument :
 ECD_0
ClientSampleId :
 OILY-DEBRIS

Manual Integrations
APPROVED
 Sohil
 1/7/2019 3:41:14 PM

Integration File signal 1: autoint1.e
 Integration File signal 2: autoint2.e
 Quant Time: Jan 07 00:07:51 2019
 Quant Method : Z:\pestpcbsrv\HPCHEM1\ECD_0\methods\P0010219.M
 Quant Title : GC EXTRACTABLES
 QLast Update : Wed Jan 02 14:46:04 2019
 Response via : Initial Calibration
 Integrator: ChemStation 6890 Scale Mode: Small noise peaks clipped

Volume Inj. : 2 µl
 Signal #1 Phase : ZB-MR1 Signal #2 Phase: ZB-MR2
 Signal #1 Info : 30Mx0.32mmx 0.50µ Signal #2 Info : 30M x 0.32mm x 0.25µm

Compound	RT#1	RT#2	Resp#1	Resp#2	ng/ml	ng/ml

System Monitoring Compounds						
1) SA Tetrachlo...	4.177	3.212	6521364	1119141	4.984m	4.987
2) SA Decachlor...	9.658	7.872	3032138	624990	3.827	2.431 #

Target Compounds

(f)=RT Delta > 1/2 Window (#)=Amounts differ by > 25% (m)=manual int.

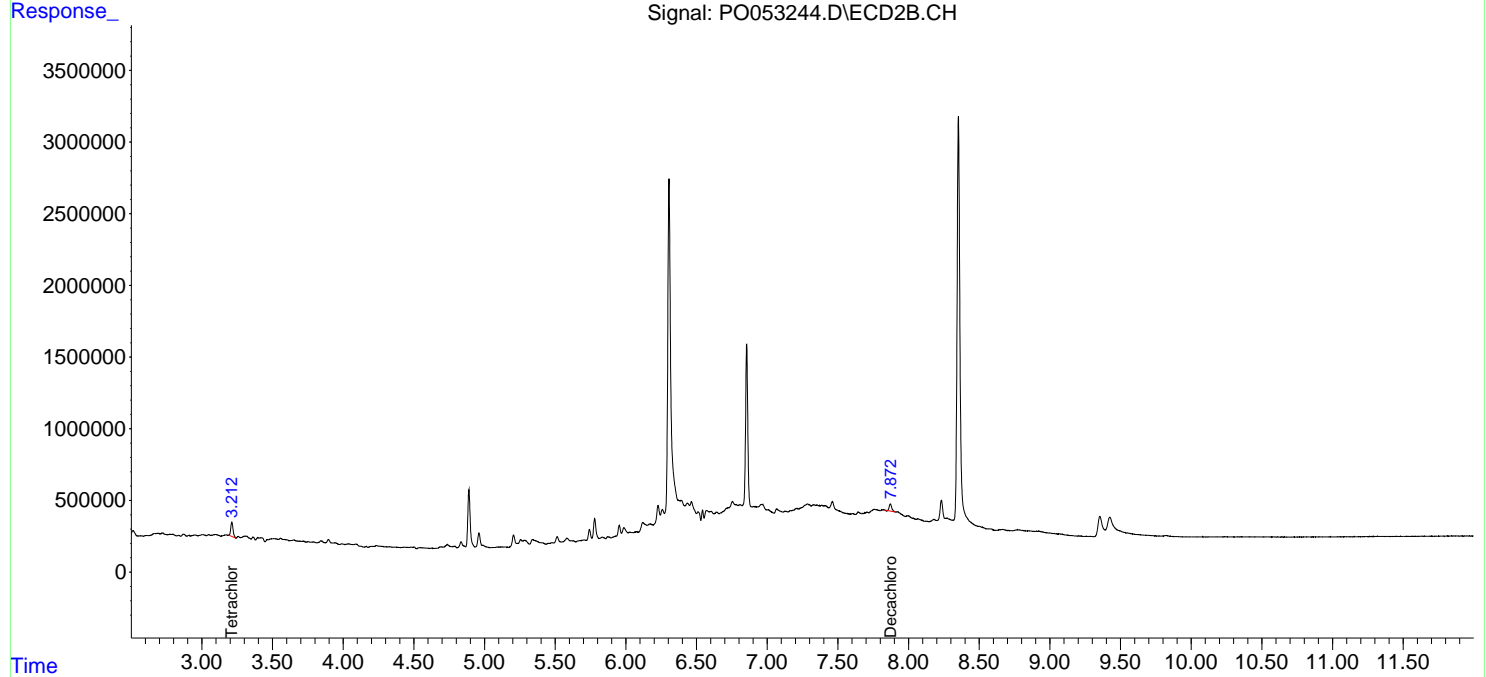
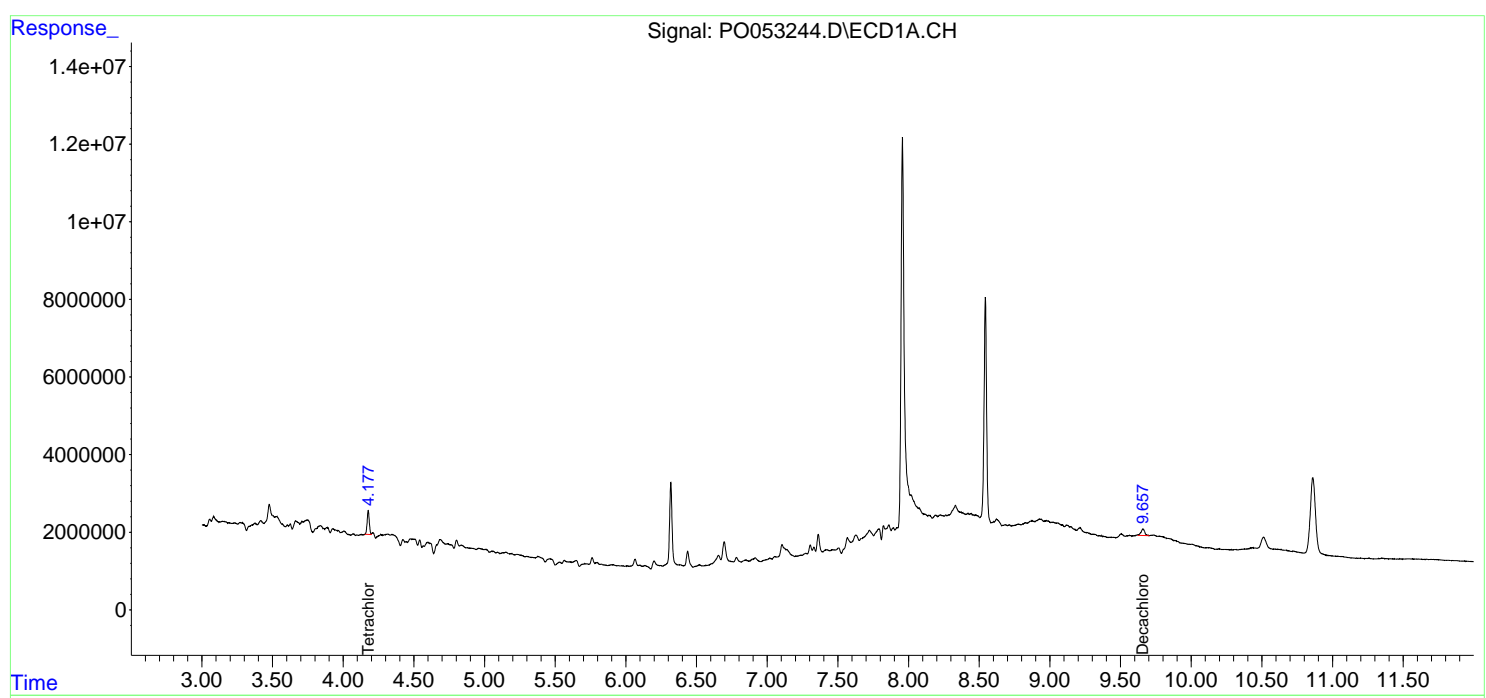
Data Path : Z:\pestpcbsrv\HPCHEM1\ECD_0\Data\PO010419\
 Data File : PO053244.D
 Signal(s) : Signal #1: ECD1A.CH Signal #2: ECD2B.CH
 Acq On : 05 Jan 2019 8:10
 Operator : SM/SJ
 Sample : K1041-05 5X
 Misc :
 ALS Vial : 65 Sample Multiplier: 1

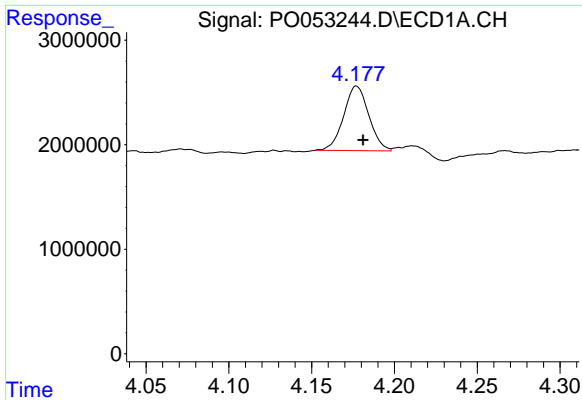
Instrument :
 ECD_0
ClientSampled :
 OILY-DEBRIS

Manual Integrations
APPROVED
 Sohil
 1/7/2019 3:41:14 PM

Integration File signal 1: autoint1.e
 Integration File signal 2: autoint2.e
 Quant Time: Jan 07 00:07:51 2019
 Quant Method : Z:\pestpcbsrv\HPCHEM1\ECD_0\methods\PO010219.M
 Quant Title : GC EXTRACTABLES
 QLast Update : Wed Jan 02 14:46:04 2019
 Response via : Initial Calibration
 Integrator: ChemStation 6890 Scale Mode: Small noise peaks clipped

Volume Inj. : 2 µl
 Signal #1 Phase : ZB-MR1 Signal #2 Phase: ZB-MR2
 Signal #1 Info : 30Mx0.32mmx 0.50µ Signal #2 Info : 30M x 0.32mm x 0.25µm

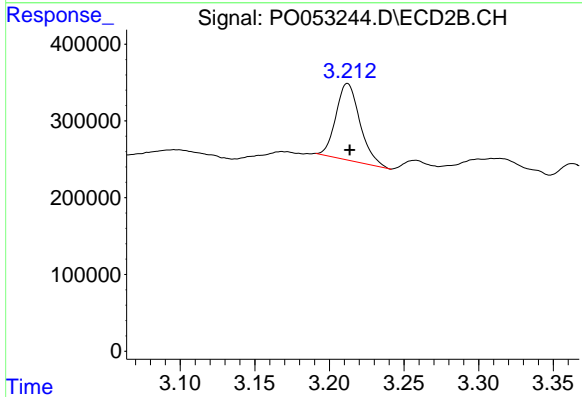




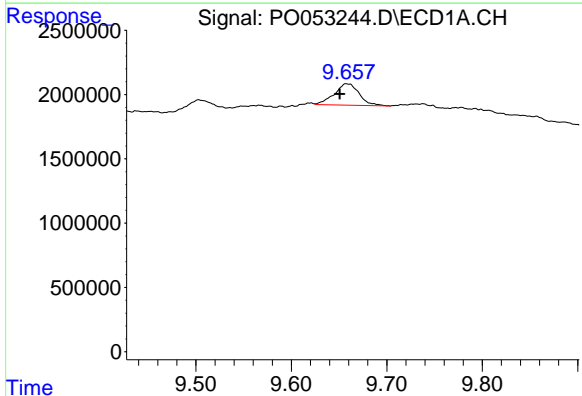
#1 Tetrachloro-m-xylene
 R.T.: 4.177 min
 Delta R.T.: -0.004 min
 Response: 6521364
 Conc: 4.98 ng/ml m

Instrument :
 ECD_O
 ClientSampled :
 OILY-DEBRIS

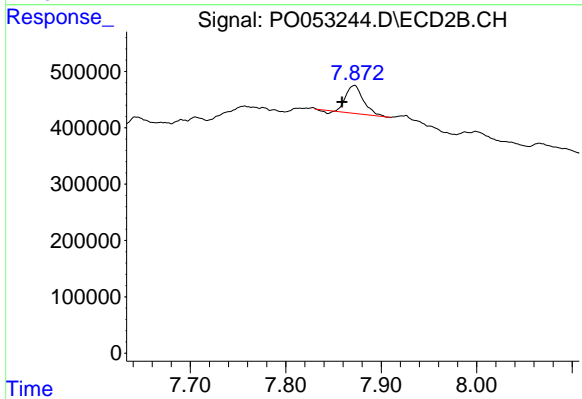
Manual Integrations
 APPROVED
 Sohil
 1/7/2019 3:41:14 PM



#1 Tetrachloro-m-xylene
 R.T.: 3.212 min
 Delta R.T.: -0.001 min
 Response: 1119141
 Conc: 4.99 ng/ml



#2 Decachlorobiphenyl
 R.T.: 9.658 min
 Delta R.T.: 0.007 min
 Response: 3032138
 Conc: 3.83 ng/ml



#2 Decachlorobiphenyl
 R.T.: 7.872 min
 Delta R.T.: 0.013 min
 Response: 624990
 Conc: 2.43 ng/ml