

Data Path : Z:\pestpcbsrv\HPCHEM1\ECD_0\Data\P0010421\
 Data File : P0074352.D
 Signal(s) : Signal #1: ECD1A.CH Signal #2: ECD2B.CH
 Acq On : 04 Jan 2021 22:49
 Operator : DD\AJ
 Sample : AR1262ICC250
 Misc :
 ALS Vial : 28 Sample Multiplier: 1

Instrument :
 ECD_0
 ClientSampleId :
 AR1262ICC250

Integration File signal 1: autoint1.e
 Integration File signal 2: autoint2.e
 Quant Time: Jan 05 04:30:13 2021
 Quant Method : Z:\pestpcbsrv\HPCHEM1\ECD_0\methods\P0010421.M
 Quant Title : GC EXTRACTABLES
 QLast Update : Tue Jan 05 04:19:22 2021
 Response via : Initial Calibration
 Integrator: ChemStation 6890 Scale Mode: Small noise peaks clipped

Volume Inj. : 2 µl
 Signal #1 Phase : ZB-MR1 Signal #2 Phase: ZB-MR2
 Signal #1 Info : 30Mx0.32mmx 0.50µ Signal #2 Info : 30M x 0.32mm x 0.25µm

Compound	RT#1	RT#2	Resp#1	Resp#2	ng/ml	ng/ml

System Monitoring Compounds						
1) SA Tetrachlo...	4.932	3.989	2531848	1424386	25.148	25.644
2) SA Decachlor...	10.954	9.249	2663829	1515036	25.724	25.977
Target Compounds						
36) L8 AR-1262-1	8.582	7.341	2153533	675637	255.358	261.232
37) L8 AR-1262-2	9.140	7.890	3687122	2529607	252.914	255.404
38) L8 AR-1262-3	9.451	8.175	2456913	1031755	253.712	256.831
39) L8 AR-1262-4	9.544	8.238	1870282	1737432	257.305	256.646
40) L8 AR-1262-5	10.209	8.732	1306875	798101	253.366	256.815

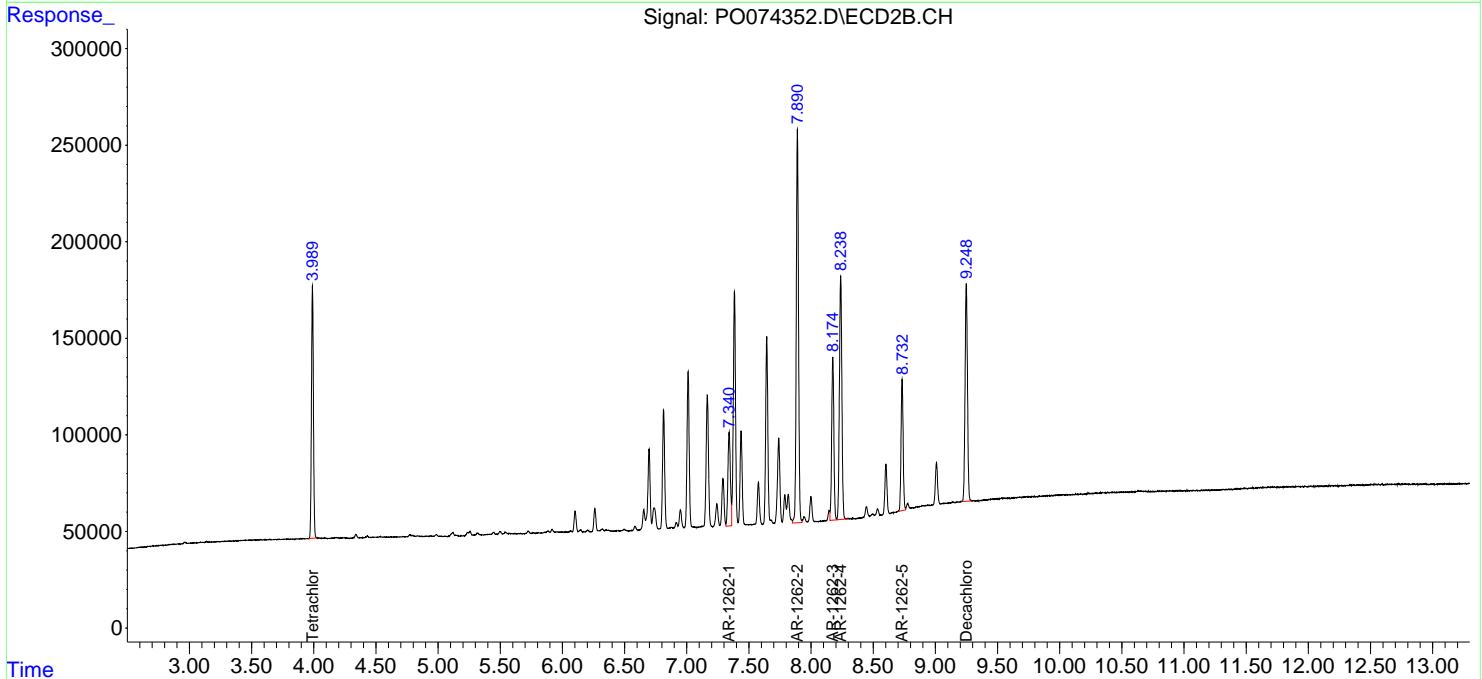
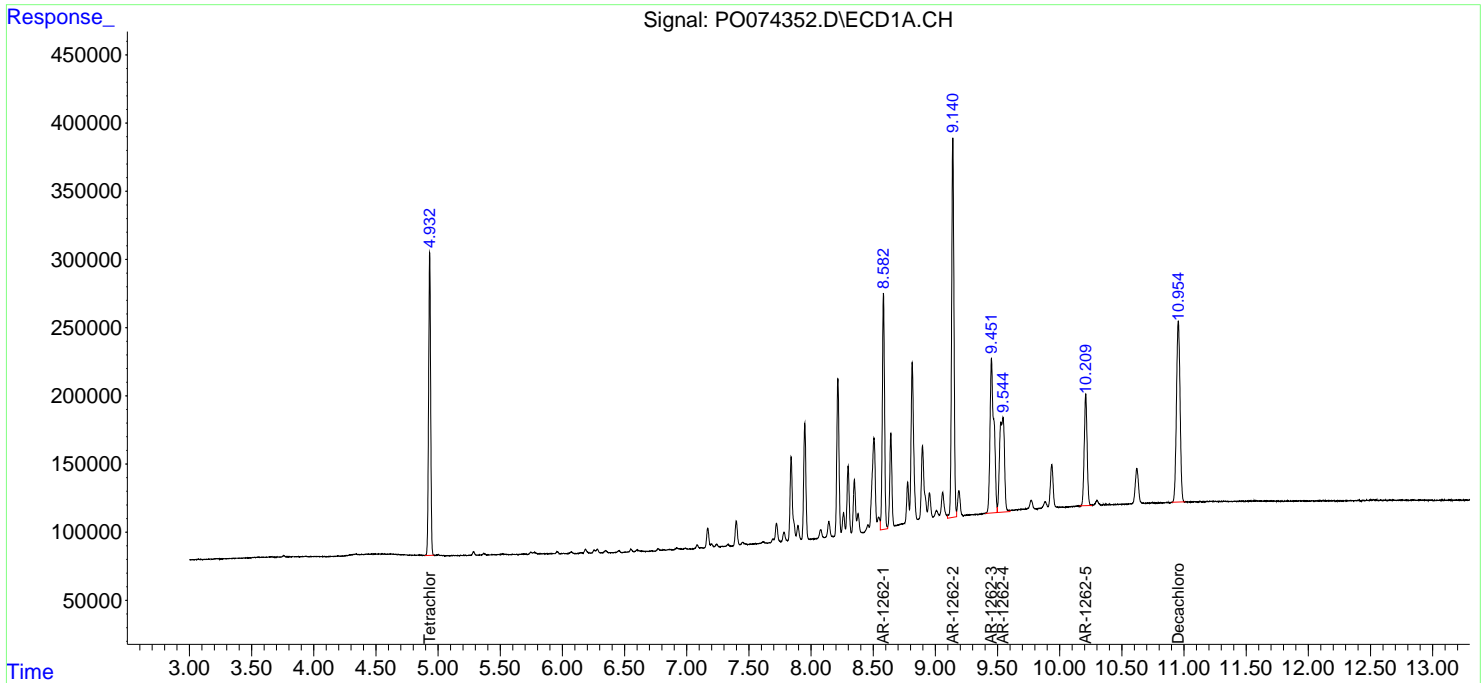
(f)=RT Delta > 1/2 Window (#)=Amounts differ by > 25% (m)=manual int.

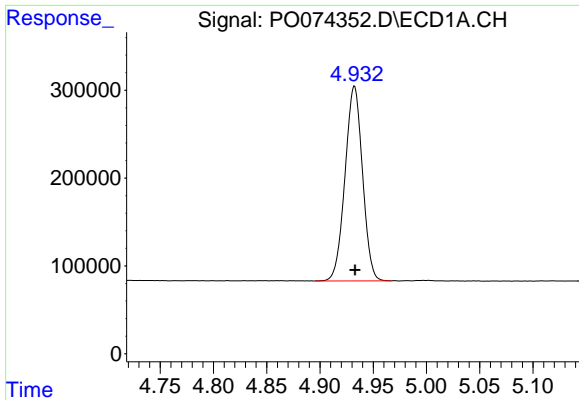
Data Path : Z:\pestpcbsrv\HPCHEM1\ECD_0\Data\P0010421\
 Data File : P0074352.D
 Signal(s) : Signal #1: ECD1A.CH Signal #2: ECD2B.CH
 Acq On : 04 Jan 2021 22:49
 Operator : DD\AJ
 Sample : AR1262ICC250
 Misc :
 ALS Vial : 28 Sample Multiplier: 1

Instrument :
 ECD_O
 ClientSampled :
 AR1262ICC250

Integration File signal 1: autoint1.e
 Integration File signal 2: autoint2.e
 Quant Time: Jan 05 04:30:13 2021
 Quant Method : Z:\pestpcbsrv\HPCHEM1\ECD_0\methods\P0010421.M
 Quant Title : GC EXTRACTABLES
 QLast Update : Tue Jan 05 04:19:22 2021
 Response via : Initial Calibration
 Integrator: ChemStation 6890 Scale Mode: Small noise peaks clipped

Volume Inj. : 2 µl
 Signal #1 Phase : ZB-MR1 Signal #2 Phase: ZB-MR2
 Signal #1 Info : 30Mx0.32mmx 0.50µ Signal #2 Info : 30M x 0.32mm x 0.25µm

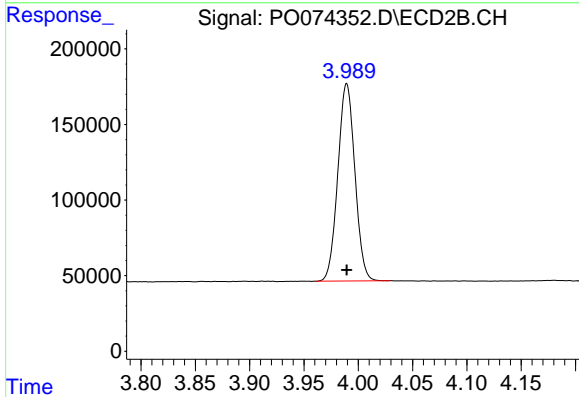




#1 Tetrachloro-m-xylene

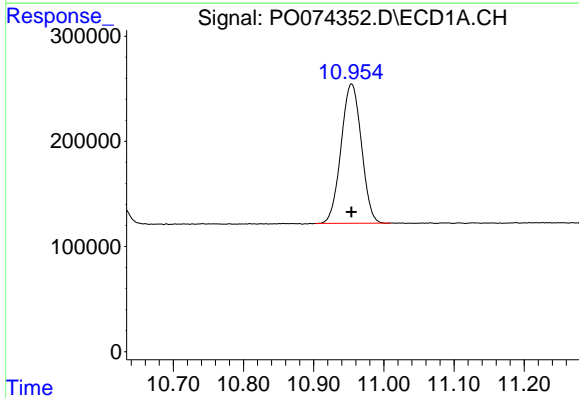
R.T.: 4.932 min
Delta R.T.: 0.000 min
Response: 2531848
Conc: 25.15 ng/ml

Instrument :
ECD_O
ClientSampleId :
AR1262ICC250



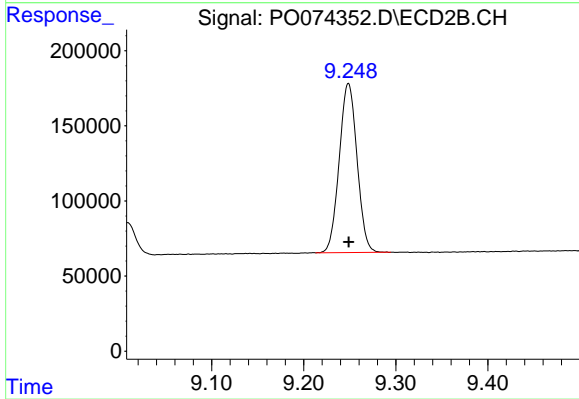
#1 Tetrachloro-m-xylene

R.T.: 3.989 min
Delta R.T.: 0.000 min
Response: 1424386
Conc: 25.64 ng/ml



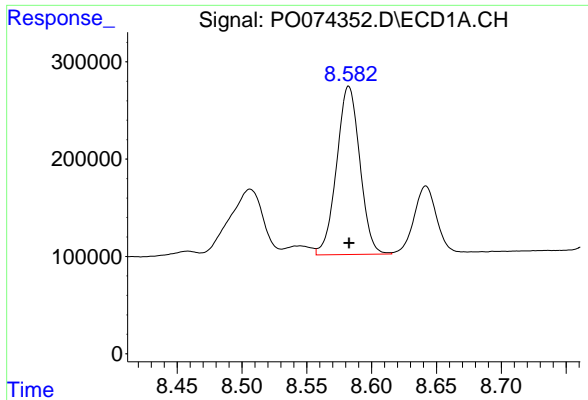
#2 Decachlorobiphenyl

R.T.: 10.954 min
Delta R.T.: 0.000 min
Response: 2663829
Conc: 25.72 ng/ml



#2 Decachlorobiphenyl

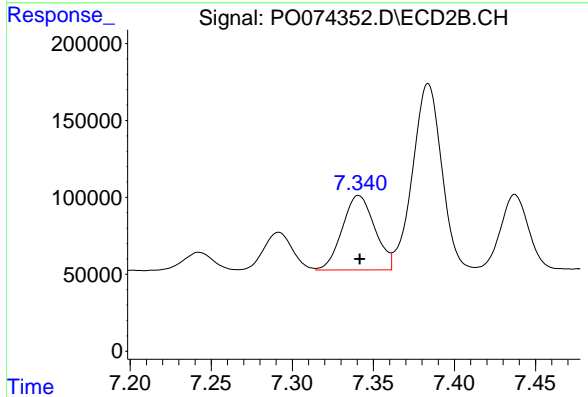
R.T.: 9.249 min
Delta R.T.: 0.000 min
Response: 1515036
Conc: 25.98 ng/ml



#36 AR-1262-1

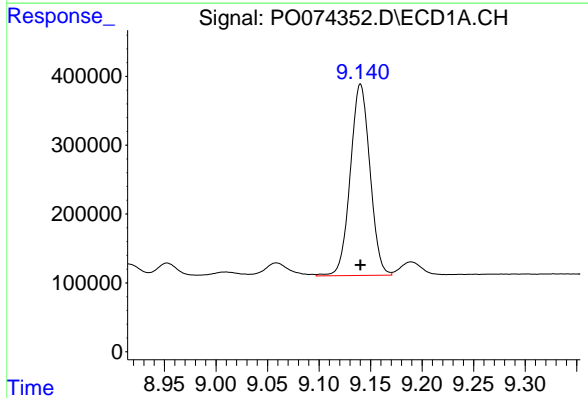
R.T.: 8.582 min
 Delta R.T.: 0.000 min
 Response: 2153533
 Conc: 255.36 ng/ml

Instrument :
 ECD_O
 ClientSampleId :
 AR1262ICC250



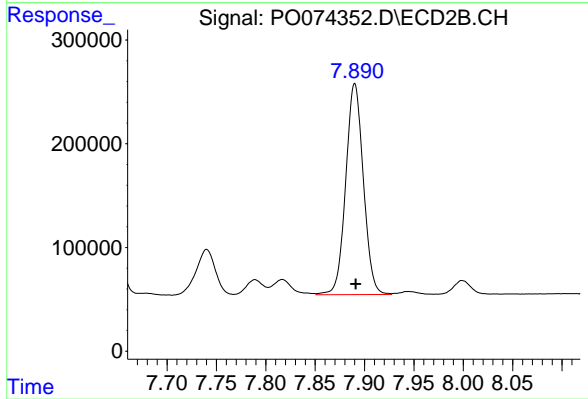
#36 AR-1262-1

R.T.: 7.341 min
 Delta R.T.: 0.000 min
 Response: 675637
 Conc: 261.23 ng/ml



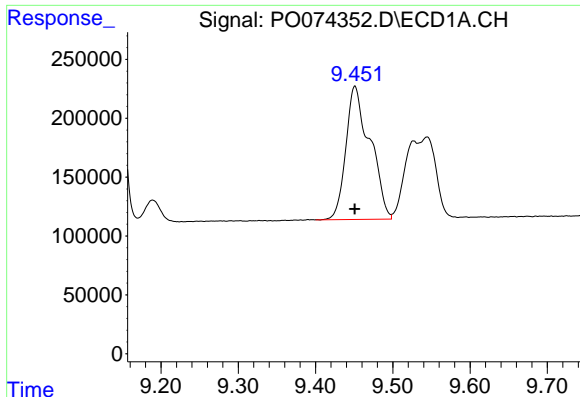
#37 AR-1262-2

R.T.: 9.140 min
 Delta R.T.: 0.000 min
 Response: 3687122
 Conc: 252.91 ng/ml



#37 AR-1262-2

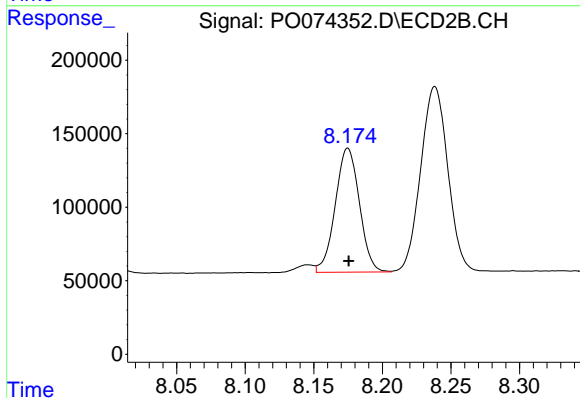
R.T.: 7.890 min
 Delta R.T.: 0.000 min
 Response: 2529607
 Conc: 255.40 ng/ml



#38 AR-1262-3

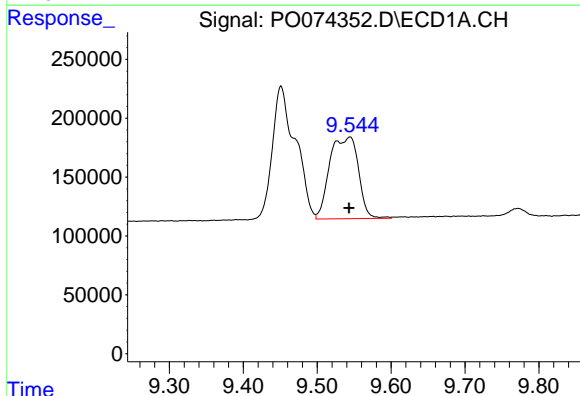
R.T.: 9.451 min
 Delta R.T.: 0.000 min
 Response: 2456913
 Conc: 253.71 ng/ml

Instrument :
 ECD_O
 ClientSampleId :
 AR1262ICC250



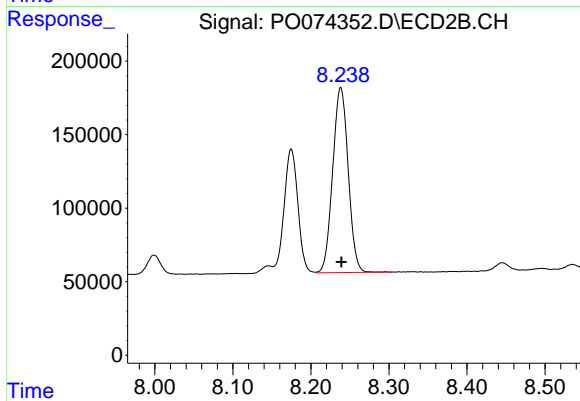
#38 AR-1262-3

R.T.: 8.175 min
 Delta R.T.: 0.000 min
 Response: 1031755
 Conc: 256.83 ng/ml



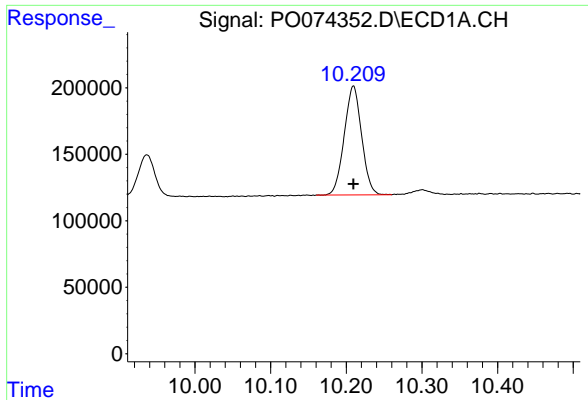
#39 AR-1262-4

R.T.: 9.544 min
 Delta R.T.: 0.000 min
 Response: 1870282
 Conc: 257.30 ng/ml



#39 AR-1262-4

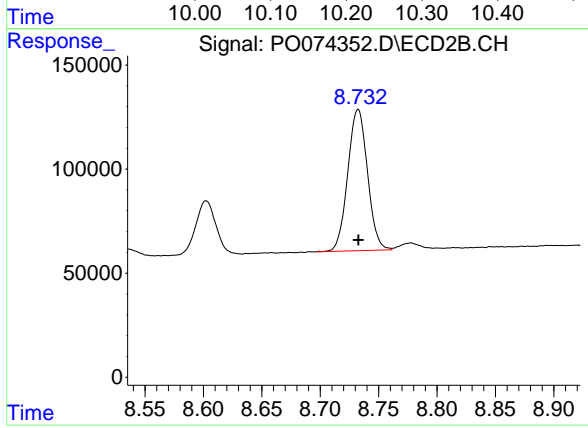
R.T.: 8.238 min
 Delta R.T.: 0.000 min
 Response: 1737432
 Conc: 256.65 ng/ml



#40 AR-1262-5

R.T.: 10.209 min
Delta R.T.: 0.000 min
Response: 1306875
Conc: 253.37 ng/ml

Instrument :
ECD_O
ClientSampled :
AR1262ICC250



#40 AR-1262-5

R.T.: 8.732 min
Delta R.T.: 0.000 min
Response: 798101
Conc: 256.81 ng/ml