

Data Path : Z:\pestpcbsrv\HPCHEM1\ECD_0\Data\P0010421\
 Data File : P0074363.D
 Signal(s) : Signal #1: ECD1A.CH Signal #2: ECD2B.CH
 Acq On : 05 Jan 2021 1:57
 Operator : DD\AJ
 Sample : AR1262ICV500
 Misc :
 ALS Vial : 39 Sample Multiplier: 1

Instrument :
 ECD_0
ClientSampleId :
 ICVPO010421AR1262

Manual Integrations
APPROVED
 Ankita
 1/5/2021 1:53:05 PM

Integration File signal 1: autoint1.e
 Integration File signal 2: autoint2.e
 Quant Time: Jan 05 05:10:03 2021
 Quant Method : Z:\pestpcbsrv\HPCHEM1\ECD_0\methods\P0010421.M
 Quant Title : GC EXTRACTABLES
 QLast Update : Tue Jan 05 05:03:05 2021
 Response via : Initial Calibration
 Integrator: ChemStation 6890 Scale Mode: Small noise peaks clipped

Volume Inj. : 2 µl
 Signal #1 Phase : ZB-MR1 Signal #2 Phase: ZB-MR2
 Signal #1 Info : 30Mx0.32mmx 0.50µ Signal #2 Info : 30M x 0.32mm x 0.25µm

Compound	RT#1	RT#2	Resp#1	Resp#2	ng/ml	ng/ml

System Monitoring Compounds						
1) SA Tetrachlo...	4.932	3.989	4907824	2748649	51.077	51.600
2) SA Decachlor...	10.955	9.249	5011893	2880432	53.911	55.332
Target Compounds						
36) L8 AR-1262-1	8.583	7.342	4199842	1293524	504.229	499.689
37) L8 AR-1262-2	9.141	7.891	7231174	4900197	501.092	501.899
38) L8 AR-1262-3	9.452	8.175	4802934	1989116	506.307	501.640
39) L8 AR-1262-4	9.545	8.239	3590946	3371498	496.567m	505.338
40) L8 AR-1262-5	10.212	8.732	2554622	1578980	506.976	519.960

(f)=RT Delta > 1/2 Window (#)=Amounts differ by > 25% (m)=manual int.

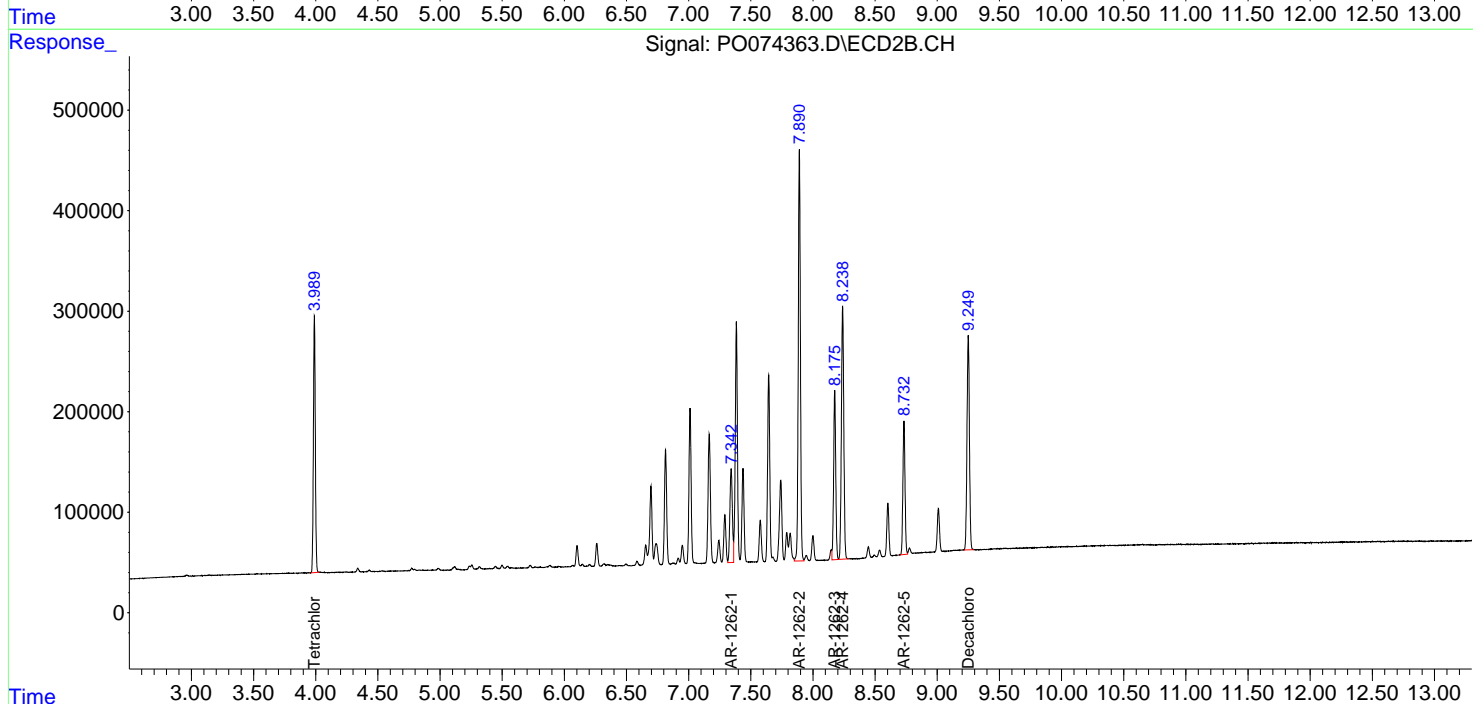
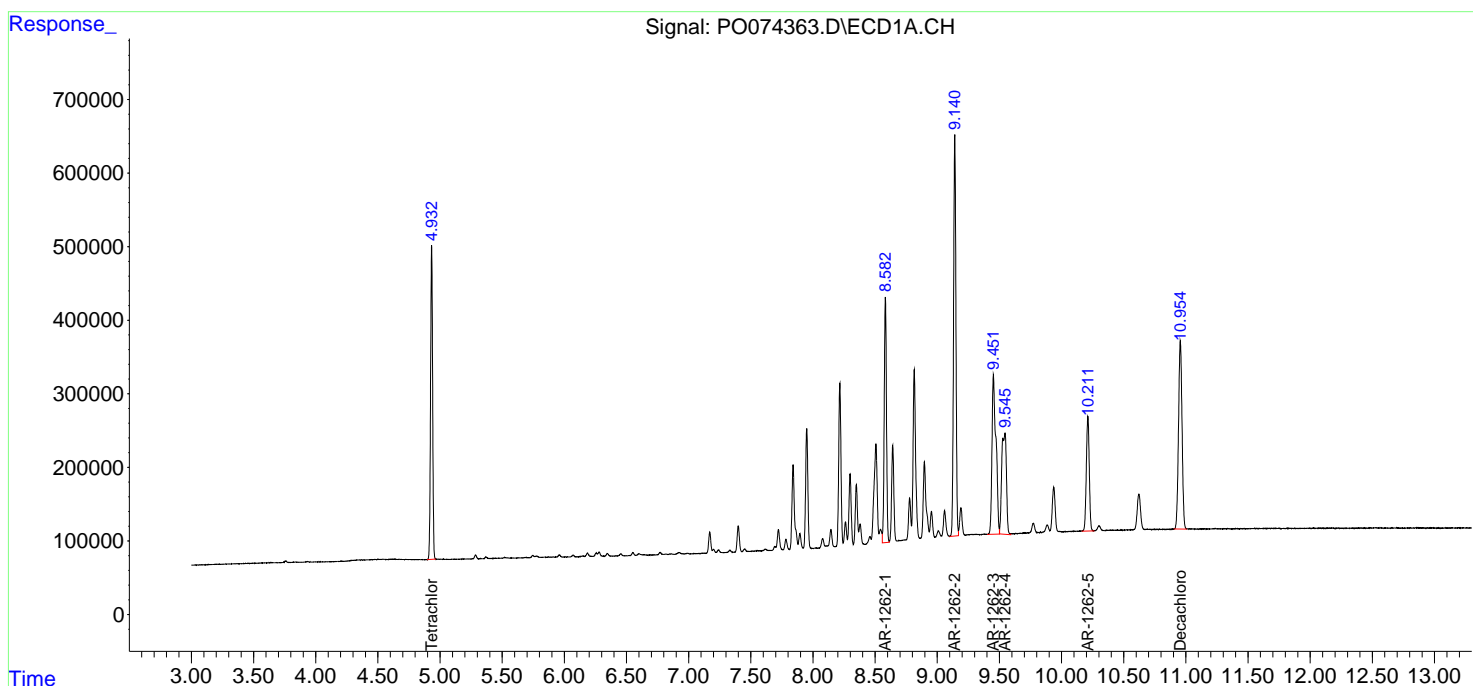
Data Path : Z:\pestpcbsrv\HPCHEM1\ECD_0\Data\P0010421\
 Data File : P0074363.D
 Signal(s) : Signal #1: ECD1A.CH Signal #2: ECD2B.CH
 Acq On : 05 Jan 2021 1:57
 Operator : DD\AJ
 Sample : AR1262ICV500
 Misc :
 ALS Vial : 39 Sample Multiplier: 1

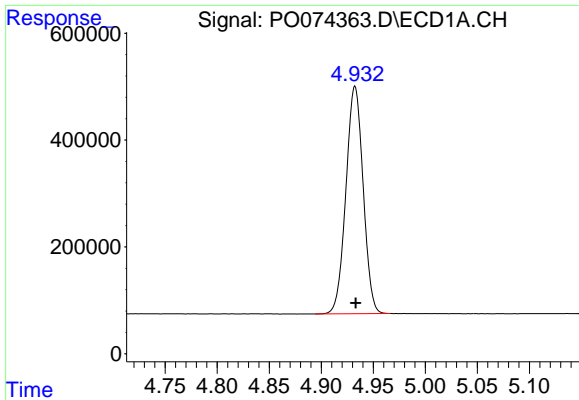
Instrument :
 ECD_O
Client Sampled :
 ICVPO010421AR1262

Manual Integrations
APPROVED
 Ankita
 1/5/2021 1:53:05 PM

Integration File signal 1: autoint1.e
 Integration File signal 2: autoint2.e
 Quant Time: Jan 05 05:10:03 2021
 Quant Method : Z:\pestpcbsrv\HPCHEM1\ECD_0\methods\P0010421.M
 Quant Title : GC EXTRACTABLES
 QLast Update : Tue Jan 05 05:03:05 2021
 Response via : Initial Calibration
 Integrator: ChemStation 6890 Scale Mode: Small noise peaks clipped

Volume Inj. : 2 µl
 Signal #1 Phase : ZB-MR1 Signal #2 Phase: ZB-MR2
 Signal #1 Info : 30Mx0.32mmx 0.50µ Signal #2 Info : 30M x 0.32mm x 0.25µm

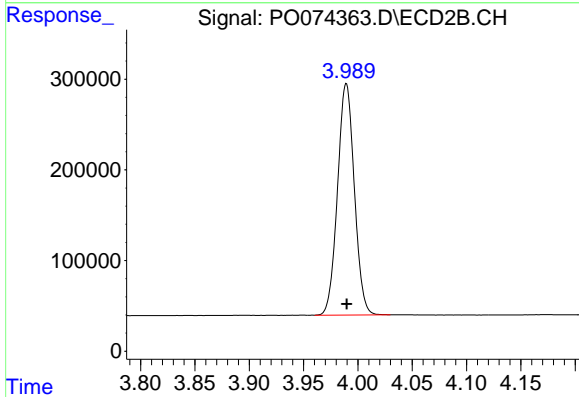




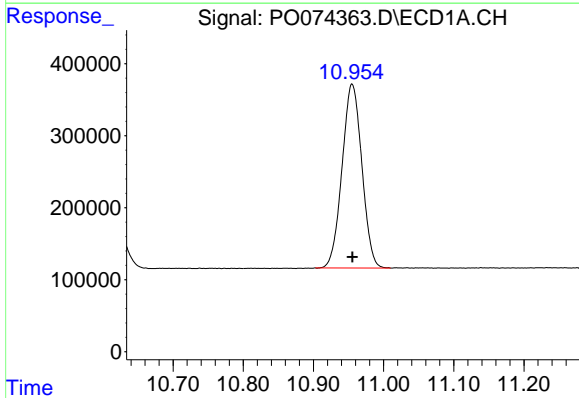
#1 Tetrachloro-m-xylene
 R.T.: 4.932 min
 Delta R.T.: 0.000 min
 Response: 4907824
 Conc: 51.08 ng/ml

Instrument :
 ECD_O
ClientSampled :
 ICVPO010421AR1262

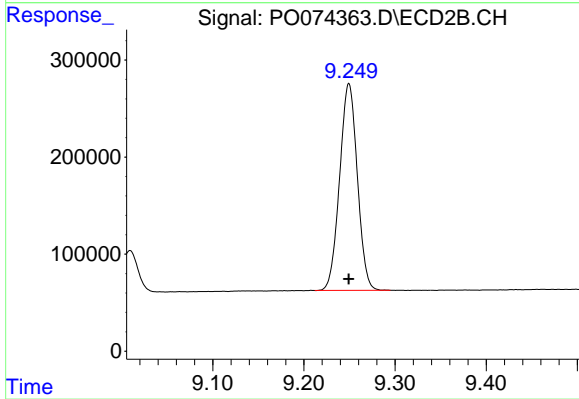
Manual Integrations
APPROVED
 Ankita
 1/5/2021 1:53:05 PM



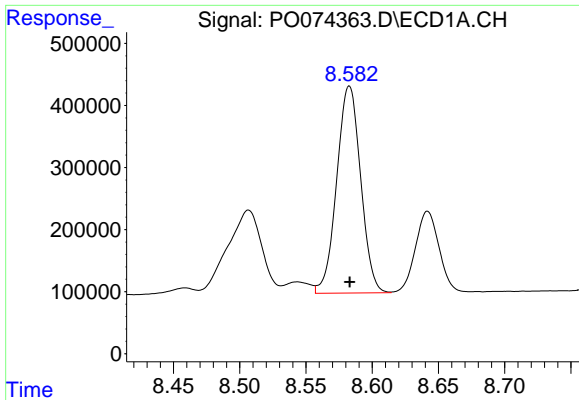
#1 Tetrachloro-m-xylene
 R.T.: 3.989 min
 Delta R.T.: 0.000 min
 Response: 2748649
 Conc: 51.60 ng/ml



#2 Decachlorobiphenyl
 R.T.: 10.955 min
 Delta R.T.: 0.000 min
 Response: 5011893
 Conc: 53.91 ng/ml



#2 Decachlorobiphenyl
 R.T.: 9.249 min
 Delta R.T.: 0.000 min
 Response: 2880432
 Conc: 55.33 ng/ml

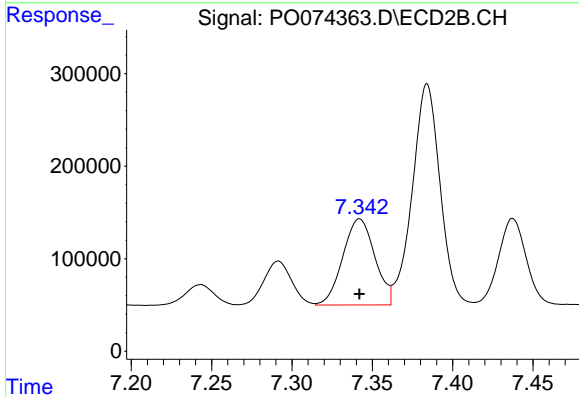


#36 AR-1262-1

R.T.: 8.583 min
 Delta R.T.: 0.000 min
 Response: 4199842
 Conc: 504.23 ng/ml

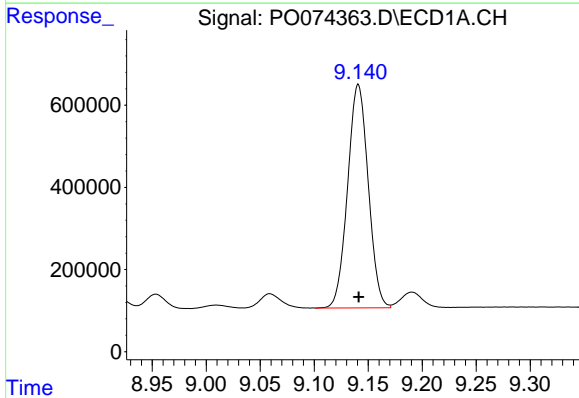
Instrument :
 ECD_O
 ClientSampled :
 ICVPO010421AR1262

Manual Integrations
 APPROVED
 Ankita
 1/5/2021 1:53:05 PM



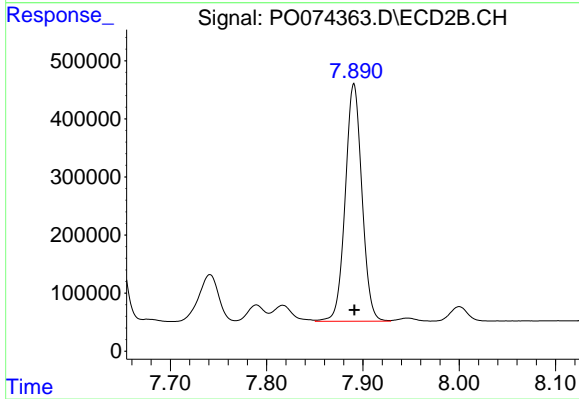
#36 AR-1262-1

R.T.: 7.342 min
 Delta R.T.: 0.000 min
 Response: 1293524
 Conc: 499.69 ng/ml



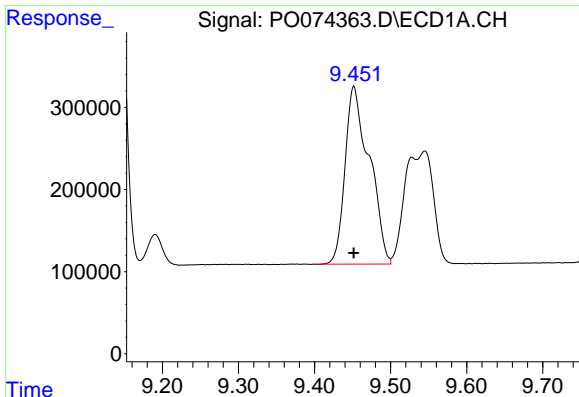
#37 AR-1262-2

R.T.: 9.141 min
 Delta R.T.: 0.000 min
 Response: 7231174
 Conc: 501.09 ng/ml



#37 AR-1262-2

R.T.: 7.891 min
 Delta R.T.: 0.000 min
 Response: 4900197
 Conc: 501.90 ng/ml



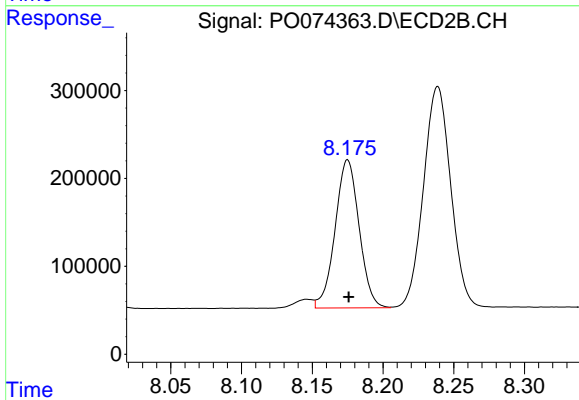
#38 AR-1262-3

R.T.: 9.452 min
 Delta R.T.: 0.000 min
 Response: 4802934
 Conc: 506.31 ng/ml

Instrument :
 ECD_O
 ClientSampled :
 ICVPO010421AR1262

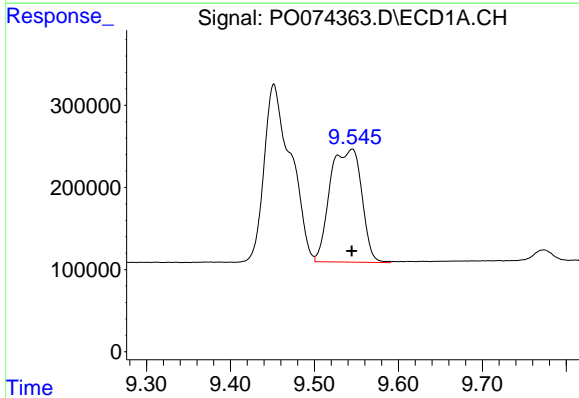
Manual Integrations
 APPROVED

Ankita
 1/5/2021 1:53:05 PM



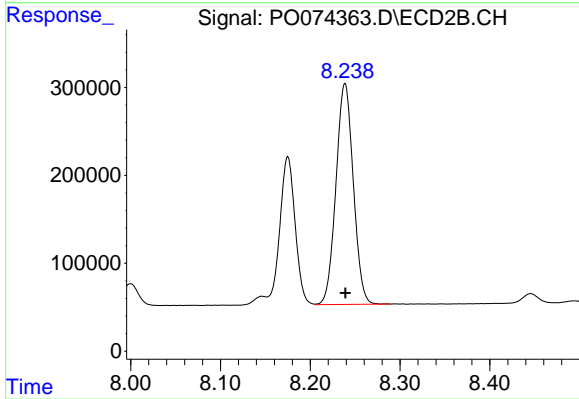
#38 AR-1262-3

R.T.: 8.175 min
 Delta R.T.: 0.000 min
 Response: 1989116
 Conc: 501.64 ng/ml



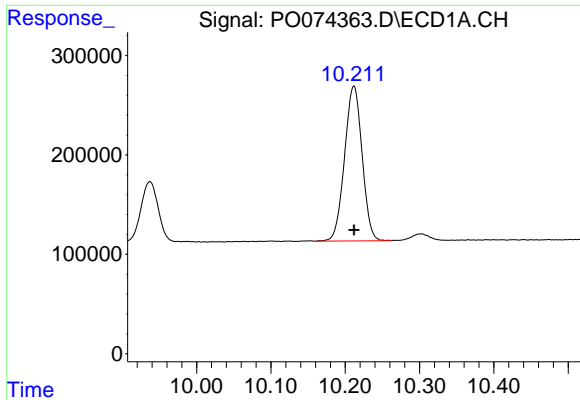
#39 AR-1262-4

R.T.: 9.545 min
 Delta R.T.: 0.000 min
 Response: 3590946
 Conc: 496.57 ng/ml m



#39 AR-1262-4

R.T.: 8.239 min
 Delta R.T.: 0.000 min
 Response: 3371498
 Conc: 505.34 ng/ml



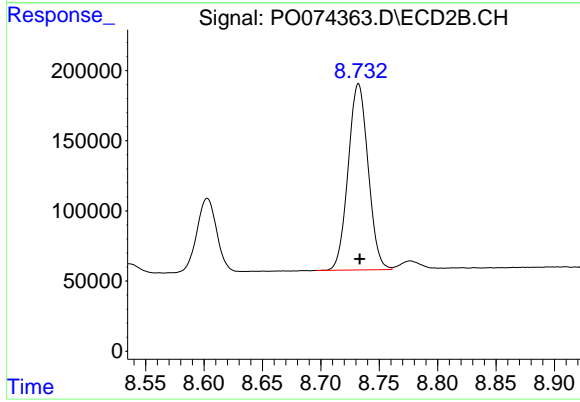
#40 AR-1262-5

R.T.: 10.212 min
Delta R.T.: 0.000 min
Response: 2554622
Conc: 506.98 ng/ml

Instrument :
ECD_O
ClientSampleId :
ICVPO010421AR1262

Manual Integrations
APPROVED

Ankita
1/5/2021 1:53:05 PM



#40 AR-1262-5

R.T.: 8.732 min
Delta R.T.: -0.001 min
Response: 1578980
Conc: 519.96 ng/ml