

Data Path : Z:\pestpcbsrv\HPCHEM1\ECD_0\Data\P0010422\
 Data File : P0083995.D
 Signal(s) : Signal #1: ECD1A.CH Signal #2: ECD2B.CH
 Acq On : 04 Jan 2022 15:54
 Operator : AJ\MA
 Sample : AR1254ICC750
 Misc :
 ALS Vial : 21 Sample Multiplier: 1

Instrument :
 ECD_0
 ClientSampleId :
 AR1254ICC750

Integration File signal 1: autoint1.e
 Integration File signal 2: autoint2.e
 Quant Time: Jan 04 17:52:21 2022
 Quant Method : Z:\pestpcbsrv\HPCHEM1\ECD_0\methods\P0010422.M
 Quant Title : GC EXTRACTABLES
 QLast Update : Tue Jan 04 17:50:02 2022
 Response via : Initial Calibration
 Integrator: ChemStation 6890 Scale Mode: Small noise peaks clipped

Volume Inj. : 2 µl
 Signal #1 Phase : ZB-MR1 Signal #2 Phase: ZB-MR2
 Signal #1 Info : 30Mx0.32mmx 0.50µ Signal #2 Info : 30M x 0.32mm x 0.25µm

Compound	RT#1	RT#2	Resp#1	Resp#2	ng/ml	ng/ml

System Monitoring Compounds						
1) SA Tetrachlo...	5.023	4.073	6542261	1777459	76.180	76.318
2) SA Decachlor...	11.170	9.559	3144609	1115784	75.786	77.778
Target Compounds						
26) L6 AR-1254-1	7.271	6.259	2060904	877188	756.932	760.014
27) L6 AR-1254-2	7.502	6.422	3082503	747872	754.667	758.775
28) L6 AR-1254-3	7.885	6.855	3114598	1199478	757.725	763.603
29) L6 AR-1254-4	8.182	7.102	2253945	751339	760.078	759.287
30) L6 AR-1254-5	8.615	7.546	2246015	1025273	753.044	775.603

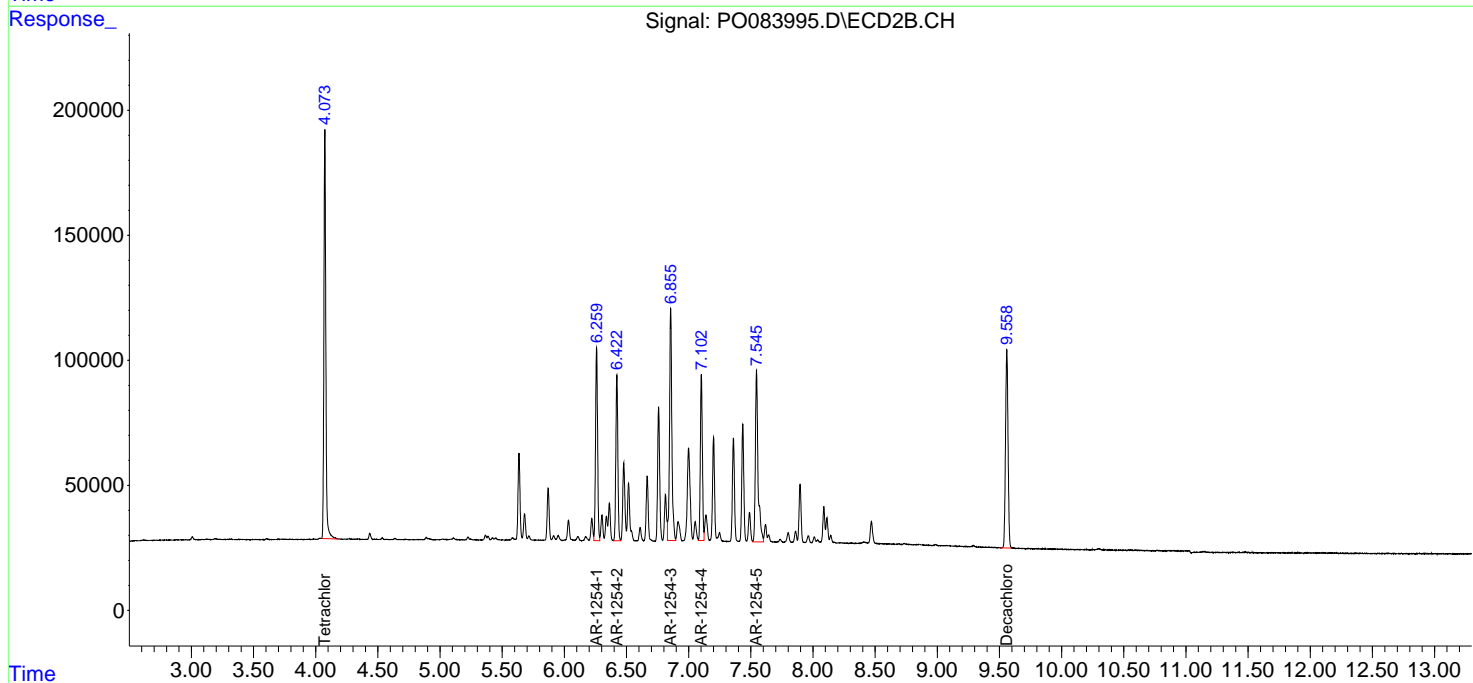
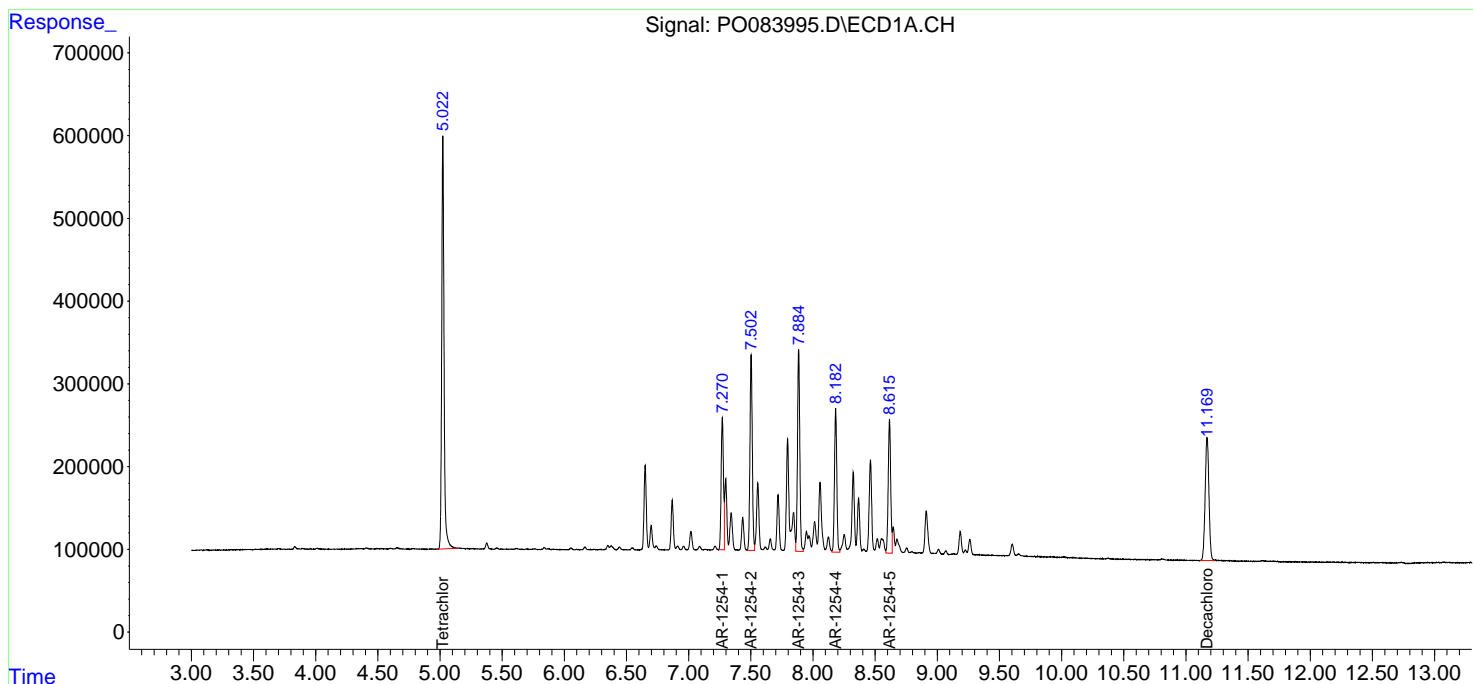
(f)=RT Delta > 1/2 Window (#)=Amounts differ by > 25% (m)=manual int.

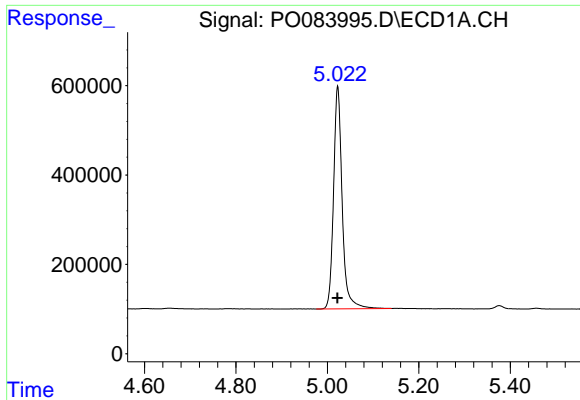
Data Path : Z:\pestpcbsrv\HPCHEM1\ECD_0\Data\P0010422\
 Data File : P0083995.D
 Signal(s) : Signal #1: ECD1A.CH Signal #2: ECD2B.CH
 Acq On : 04 Jan 2022 15:54
 Operator : AJ\MA
 Sample : AR1254IC750
 Misc :
 ALS Vial : 21 Sample Multiplier: 1

Instrument :
 ECD_0
 ClientSampleId :
 AR1254IC750

Integration File signal 1: autoint1.e
 Integration File signal 2: autoint2.e
 Quant Time: Jan 04 17:52:21 2022
 Quant Method : Z:\pestpcbsrv\HPCHEM1\ECD_0\methods\P0010422.M
 Quant Title : GC EXTRACTABLES
 QLast Update : Tue Jan 04 17:50:02 2022
 Response via : Initial Calibration
 Integrator: ChemStation 6890 Scale Mode: Small noise peaks clipped

Volume Inj. : 2 µl
 Signal #1 Phase : ZB-MR1 Signal #2 Phase: ZB-MR2
 Signal #1 Info : 30Mx0.32mmx 0.50µ Signal #2 Info : 30M x 0.32mm x 0.25µm

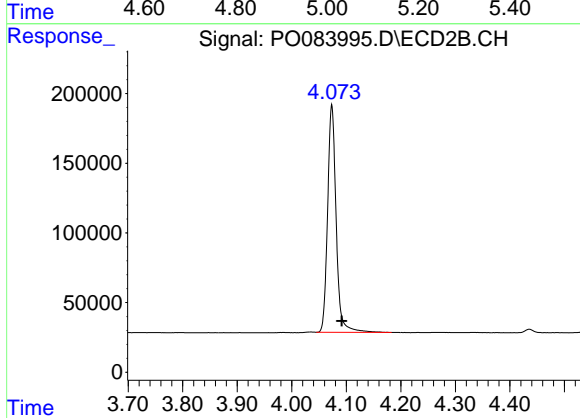




#1 Tetrachloro-m-xylene

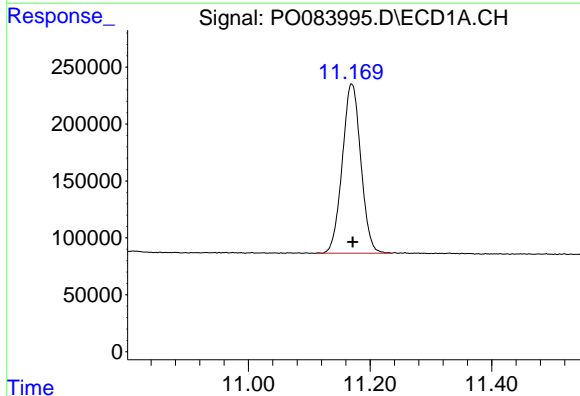
R.T.: 5.023 min
 Delta R.T.: 0.000 min
 Response: 6542261
 Conc: 76.18 ng/ml

Instrument :
 ECD_O
 ClientSampleId :
 AR1254ICC750



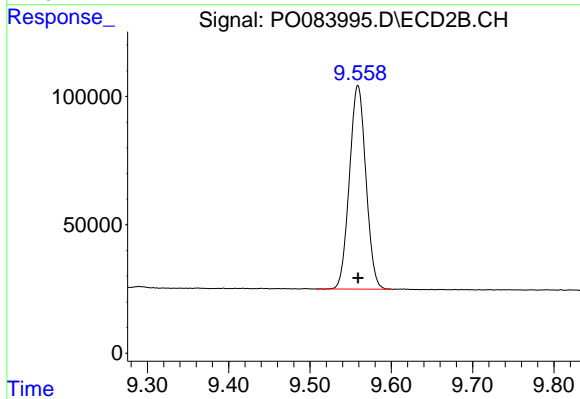
#1 Tetrachloro-m-xylene

R.T.: 4.073 min
 Delta R.T.: -0.019 min
 Response: 1777459
 Conc: 76.32 ng/ml



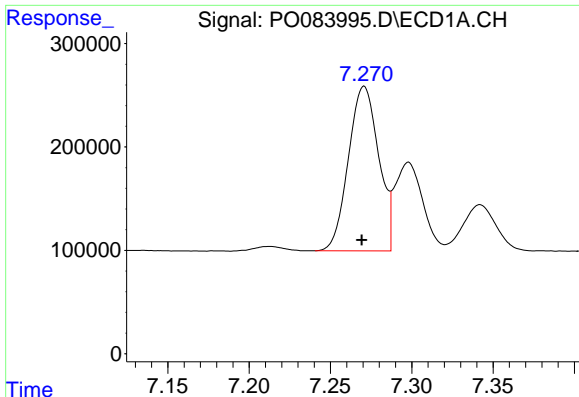
#2 Decachlorobiphenyl

R.T.: 11.170 min
 Delta R.T.: -0.002 min
 Response: 3144609
 Conc: 75.79 ng/ml



#2 Decachlorobiphenyl

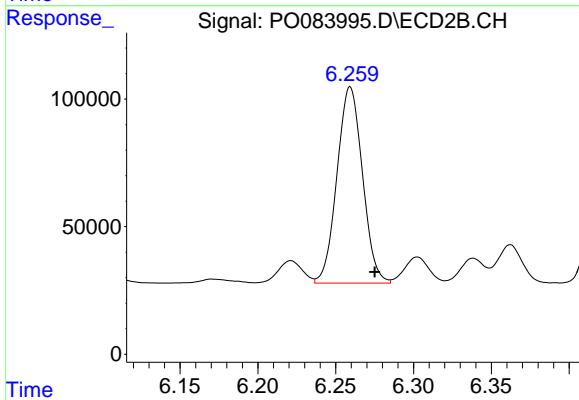
R.T.: 9.559 min
 Delta R.T.: 0.000 min
 Response: 1115784
 Conc: 77.78 ng/ml



#26 AR-1254-1

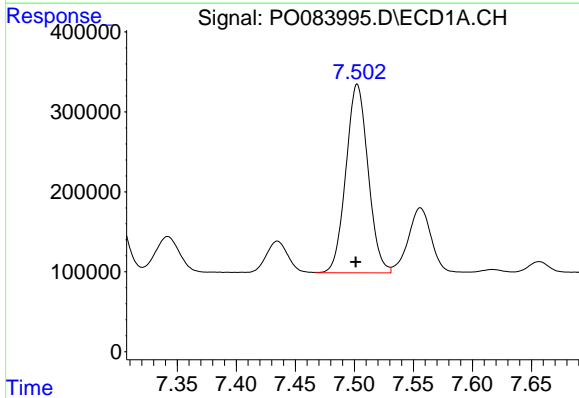
R.T.: 7.271 min
 Delta R.T.: 0.001 min
 Response: 2060904
 Conc: 756.93 ng/ml

Instrument :
 ECD_O
 ClientSampleId :
 AR1254ICC750



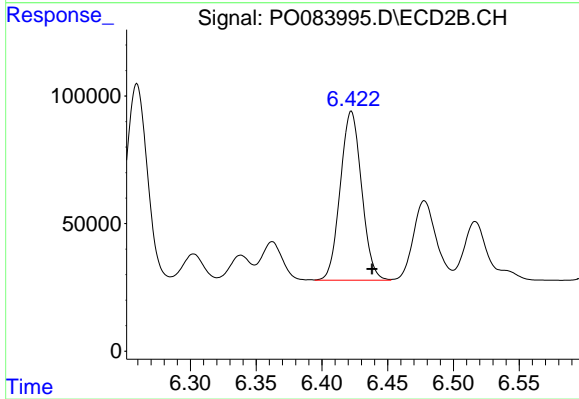
#26 AR-1254-1

R.T.: 6.259 min
 Delta R.T.: -0.016 min
 Response: 877188
 Conc: 760.01 ng/ml



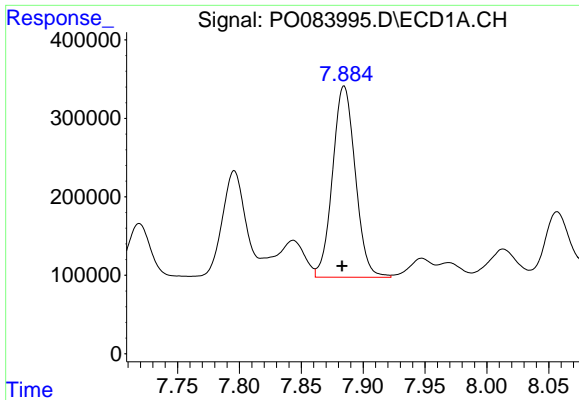
#27 AR-1254-2

R.T.: 7.502 min
 Delta R.T.: 0.001 min
 Response: 3082503
 Conc: 754.67 ng/ml



#27 AR-1254-2

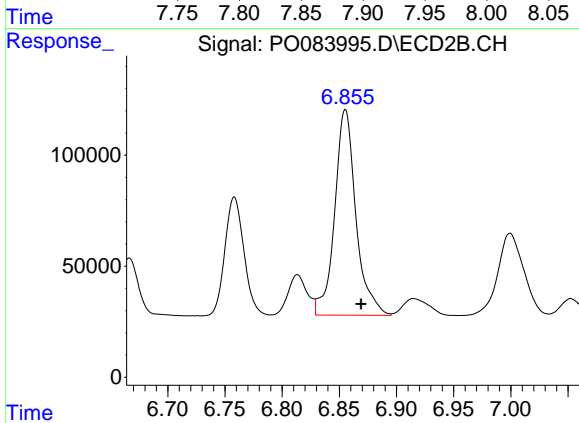
R.T.: 6.422 min
 Delta R.T.: -0.016 min
 Response: 747872
 Conc: 758.78 ng/ml



#28 AR-1254-3

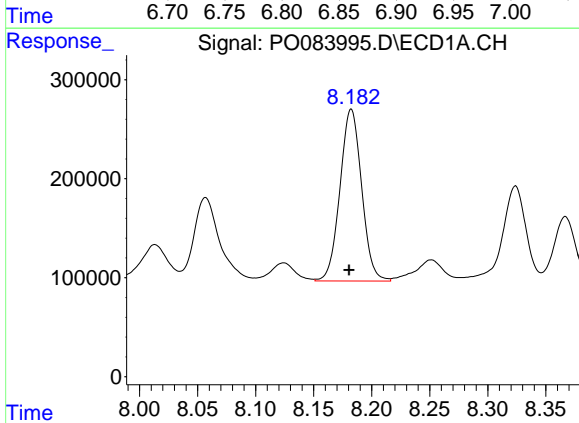
R.T.: 7.885 min
 Delta R.T.: 0.002 min
 Response: 3114598
 Conc: 757.73 ng/ml

Instrument :
 ECD_O
 ClientSampleId :
 AR1254ICC750



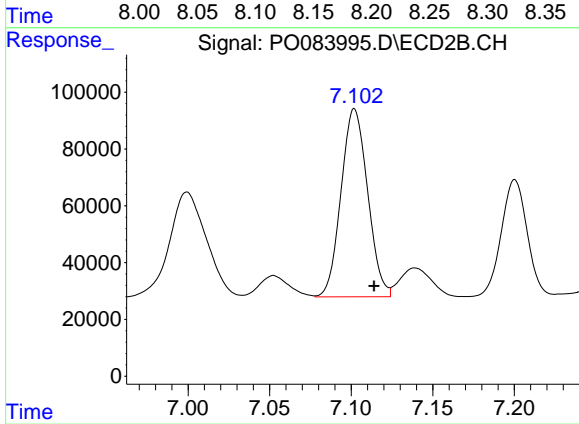
#28 AR-1254-3

R.T.: 6.855 min
 Delta R.T.: -0.014 min
 Response: 1199478
 Conc: 763.60 ng/ml



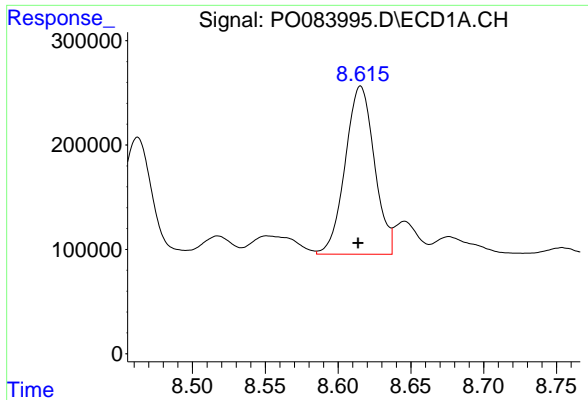
#29 AR-1254-4

R.T.: 8.182 min
 Delta R.T.: 0.002 min
 Response: 2253945
 Conc: 760.08 ng/ml



#29 AR-1254-4

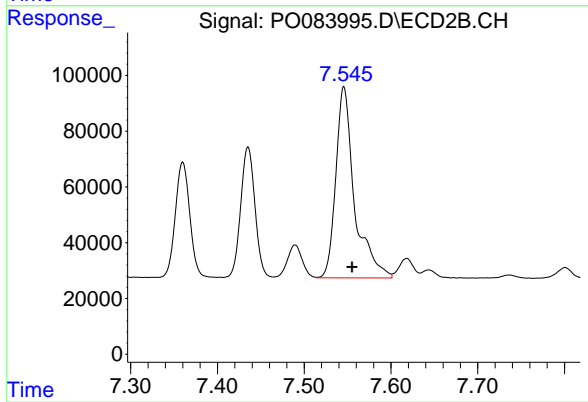
R.T.: 7.102 min
 Delta R.T.: -0.012 min
 Response: 751339
 Conc: 759.29 ng/ml



#30 AR-1254-5

R.T.: 8.615 min
Delta R.T.: 0.002 min
Response: 2246015
Conc: 753.04 ng/ml

Instrument :
ECD_O
ClientSampleId :
AR1254ICC750



#30 AR-1254-5

R.T.: 7.546 min
Delta R.T.: -0.009 min
Response: 1025273
Conc: 775.60 ng/ml