

Data Path : Z:\pestpcbsrv\HPCHEM1\ECD\_O\Data\P0010422\  
 Data File : P0084000.D  
 Signal(s) : Signal #1: ECD1A.CH Signal #2: ECD2B.CH  
 Acq On : 04 Jan 2022 17:20  
 Operator : AJ\MA  
 Sample : AR1268ICC500  
 Misc :  
 ALS Vial : 26 Sample Multiplier: 1

**Instrument :**  
 ECD\_O  
**ClientSampleId :**  
 AR1268ICC500

Integration File signal 1: autoint1.e  
 Integration File signal 2: autoint2.e  
 Quant Time: Jan 04 17:38:13 2022  
 Quant Method : Z:\pestpcbsrv\HPCHEM1\ECD\_O\methods\P0010422.M  
 Quant Title : GC EXTRACTABLES  
 QLast Update : Tue Jan 04 17:37:51 2022  
 Response via : Initial Calibration  
 Integrator: ChemStation 6890 Scale Mode: Small noise peaks clipped

Volume Inj. : 2 µl  
 Signal #1 Phase : ZB-MR1 Signal #2 Phase: ZB-MR2  
 Signal #1 Info : 30Mx0.32mmx 0.50µ Signal #2 Info : 30M x 0.32mm x 0.25µm

Compound	RT#1	RT#2	Resp#1	Resp#2	ng/ml	ng/ml
-----						
System Monitoring Compounds						
1) SA Tetrachlo...	5.022	4.074	4092398	1115435	50.000	50.000
2) SA Decachlor...	11.169	9.538	3476682	1237952	50.000	50.000
Target Compounds						
41) L9 AR-1268-1	9.586	8.392	3211187	1227491	500.000	500.000
42) L9 AR-1268-2	9.684	8.458	2908603	1099923	500.000	500.000
43) L9 AR-1268-3	9.925	8.673	2407000	888861	500.000	500.000
44) L9 AR-1268-4	10.370	8.969	1046970	418048	500.000	500.000
45) L9 AR-1268-5	10.808	9.272	7415975	2707614	500.000	500.000
-----						

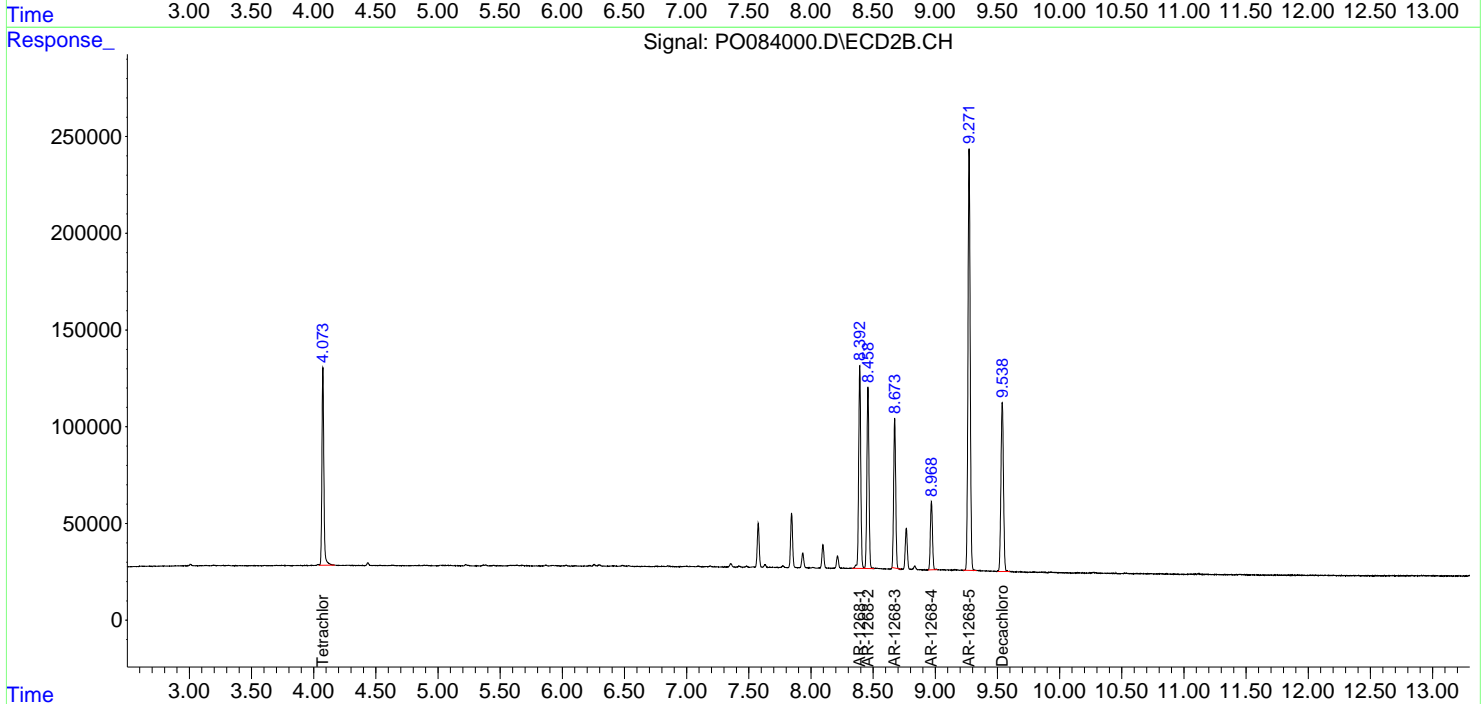
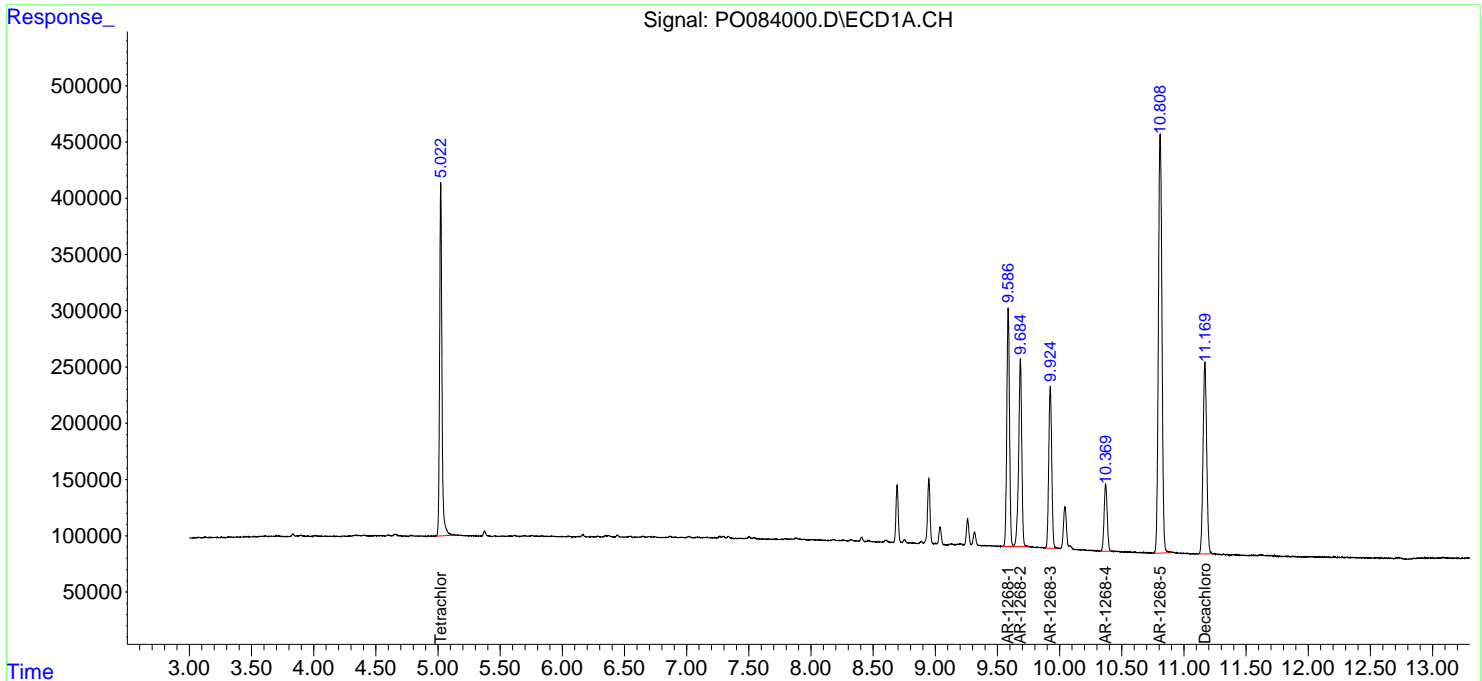
(f)=RT Delta > 1/2 Window (#)=Amounts differ by > 25% (m)=manual int.

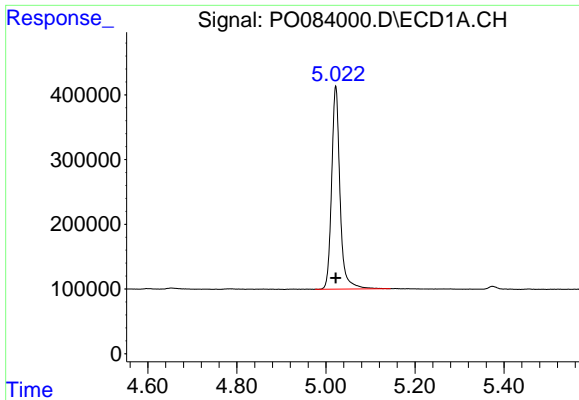
Data Path : Z:\pestpcbsrv\HPCHEM1\ECD\_O\Data\PO010422\  
 Data File : PO084000.D  
 Signal(s) : Signal #1: ECD1A.CH Signal #2: ECD2B.CH  
 Acq On : 04 Jan 2022 17:20  
 Operator : AJ\MA  
 Sample : AR1268ICC500  
 Misc :  
 ALS Vial : 26 Sample Multiplier: 1

Instrument :  
 ECD\_O  
 ClientSampleId :  
 AR1268ICC500

Integration File signal 1: autoint1.e  
 Integration File signal 2: autoint2.e  
 Quant Time: Jan 04 17:38:13 2022  
 Quant Method : Z:\pestpcbsrv\HPCHEM1\ECD\_O\methods\PO010422.M  
 Quant Title : GC EXTRACTABLES  
 QLast Update : Tue Jan 04 17:37:51 2022  
 Response via : Initial Calibration  
 Integrator: ChemStation 6890 Scale Mode: Small noise peaks clipped

Volume Inj. : 2 µl  
 Signal #1 Phase : ZB-MR1 Signal #2 Phase: ZB-MR2  
 Signal #1 Info : 30Mx0.32mmx 0.50µ Signal #2 Info : 30M x 0.32mm x 0.25µm

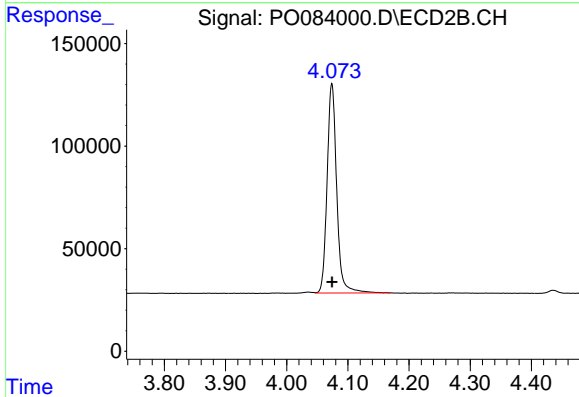




#1 Tetrachloro-m-xylene

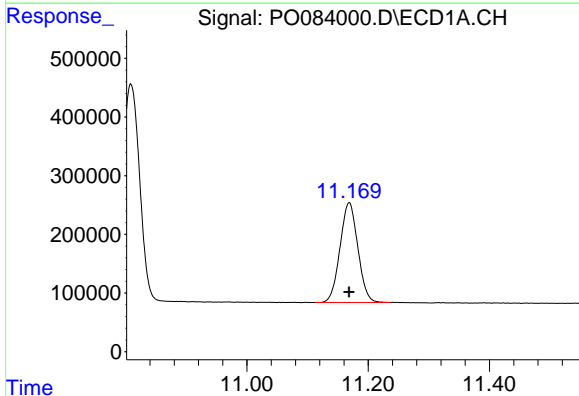
R.T.: 5.022 min  
Delta R.T.: 0.000 min  
Response: 4092398  
Conc: 50.00 ng/ml

Instrument :  
ECD\_O  
ClientSampleId :  
AR1268ICC500



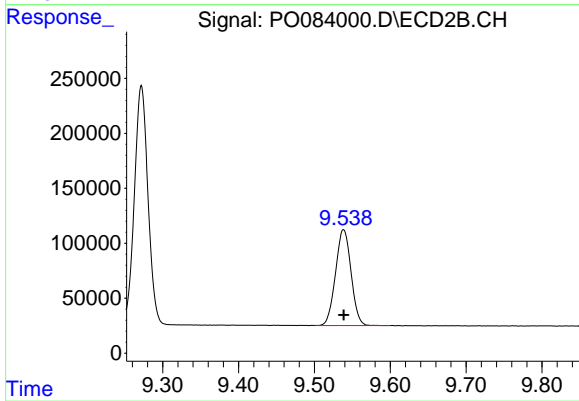
#1 Tetrachloro-m-xylene

R.T.: 4.074 min  
Delta R.T.: 0.000 min  
Response: 1115435  
Conc: 50.00 ng/ml



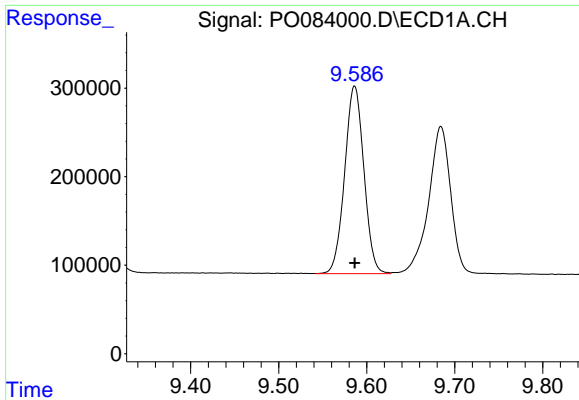
#2 Decachlorobiphenyl

R.T.: 11.169 min  
Delta R.T.: 0.000 min  
Response: 3476682  
Conc: 50.00 ng/ml



#2 Decachlorobiphenyl

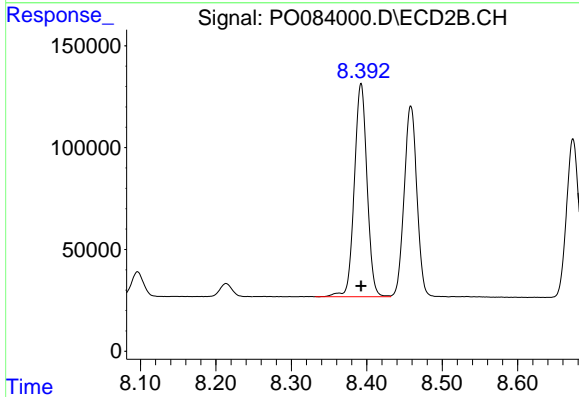
R.T.: 9.538 min  
Delta R.T.: 0.000 min  
Response: 1237952  
Conc: 50.00 ng/ml



#41 AR-1268-1

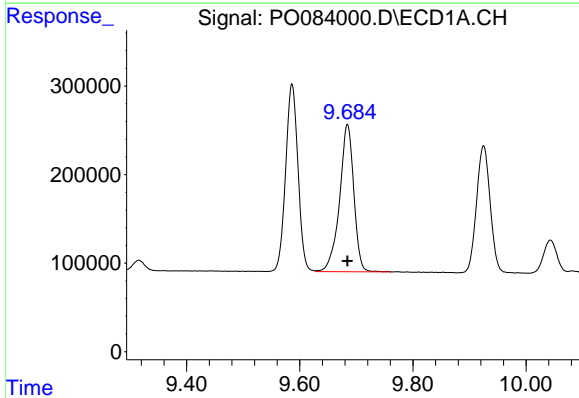
R.T.: 9.586 min  
 Delta R.T.: 0.000 min  
 Response: 3211187  
 Conc: 500.00 ng/ml

Instrument :  
 ECD\_O  
 ClientSampleId :  
 AR1268ICC500



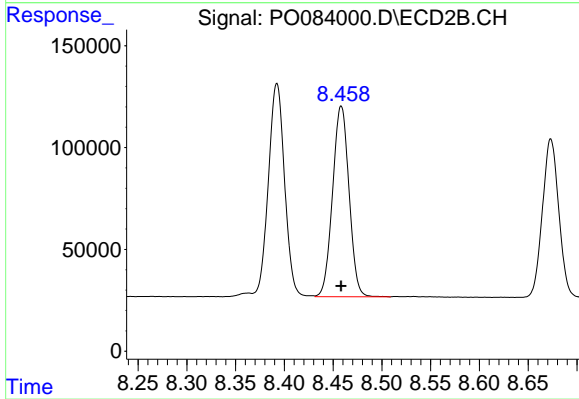
#41 AR-1268-1

R.T.: 8.392 min  
 Delta R.T.: 0.000 min  
 Response: 1227491  
 Conc: 500.00 ng/ml



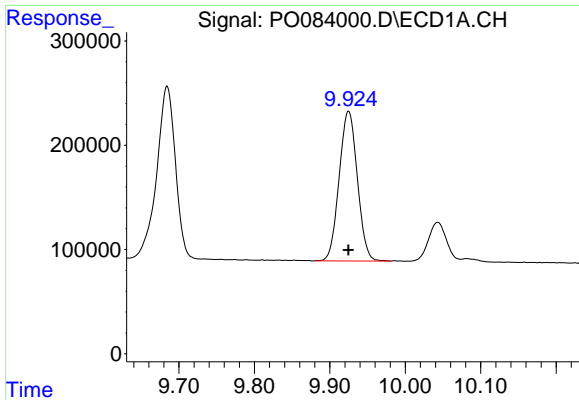
#42 AR-1268-2

R.T.: 9.684 min  
 Delta R.T.: 0.000 min  
 Response: 2908603  
 Conc: 500.00 ng/ml



#42 AR-1268-2

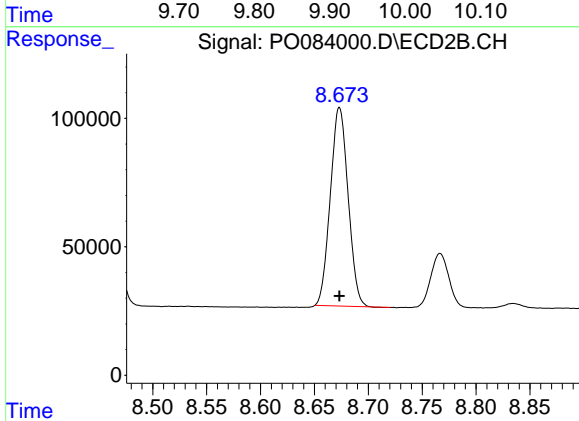
R.T.: 8.458 min  
 Delta R.T.: 0.000 min  
 Response: 1099923  
 Conc: 500.00 ng/ml



#43 AR-1268-3

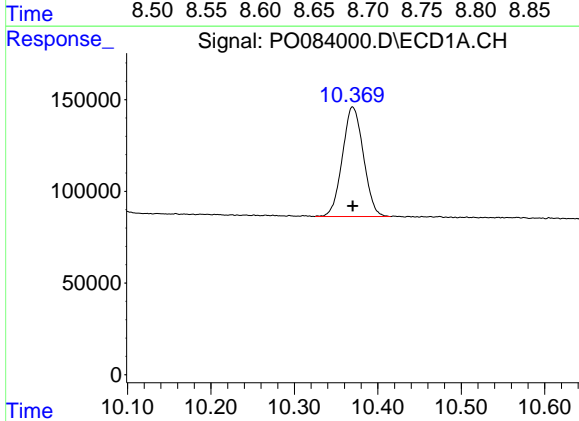
R.T.: 9.925 min  
 Delta R.T.: 0.000 min  
 Response: 2407000  
 Conc: 500.00 ng/ml

Instrument :  
 ECD\_O  
 ClientSampleId :  
 AR1268ICC500



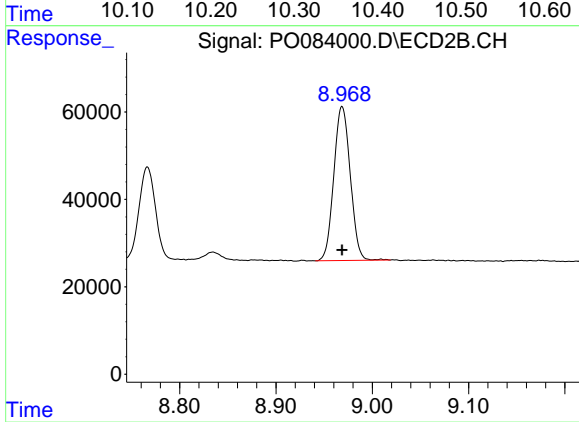
#43 AR-1268-3

R.T.: 8.673 min  
 Delta R.T.: 0.000 min  
 Response: 888861  
 Conc: 500.00 ng/ml



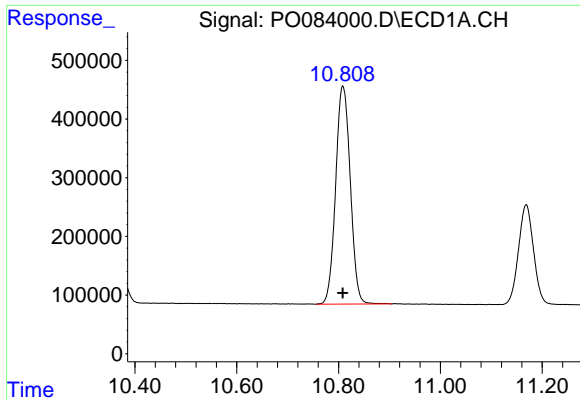
#44 AR-1268-4

R.T.: 10.370 min  
 Delta R.T.: 0.000 min  
 Response: 1046970  
 Conc: 500.00 ng/ml



#44 AR-1268-4

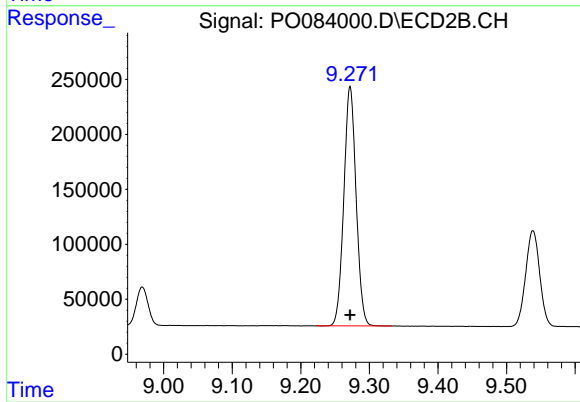
R.T.: 8.969 min  
 Delta R.T.: 0.000 min  
 Response: 418048  
 Conc: 500.00 ng/ml



#45 AR-1268-5

R.T.: 10.808 min  
Delta R.T.: 0.000 min  
Response: 7415975  
Conc: 500.00 ng/ml

Instrument :  
ECD\_O  
ClientSampleId :  
AR1268ICC500



#45 AR-1268-5

R.T.: 9.272 min  
Delta R.T.: 0.000 min  
Response: 2707614  
Conc: 500.00 ng/ml