

Data Path : Z:\pestpcbsrv\HPCHEM1\ECD_O\Data\P0010423\
 Data File : P0091797.D
 Signal(s) : Signal #1: ECD1A.ch Signal #2: ECD2B.ch
 Acq On : 04 Jan 2023 15:44
 Operator : YP/AJ
 Sample : AR1660ICC500
 Misc :
 ALS Vial : 5 Sample Multiplier: 1

Instrument :
 ECD_O
 ClientSampleId :
 AR1660ICC500

Integration File signal 1: autoint1.e
 Integration File signal 2: autoint2.e
 Quant Time: Jan 04 23:56:04 2023
 Quant Method : Z:\pestpcbsrv\HPCHEM1\ECD_O\methods\P0010423.M
 Quant Title : GC EXTRACTABLES
 QLast Update : Wed Jan 04 23:55:40 2023
 Response via : Initial Calibration
 Integrator: ChemStation

Volume Inj. : 2 µl
 Signal #1 Phase : ZB-MR1 Signal #2 Phase: ZB-MR2
 Signal #1 Info : 30Mx0.32mmx 0.50µ Signal #2 Info : 30M x 0.32mm x 0.25µm

Compound	RT#1	RT#2	Resp#1	Resp#2	ng/ml	ng/ml

System Monitoring Compounds						
1) SA Tetrachlo...	4.293	3.469	167.4E6	70885857	50.000	50.000
2) SA Decachlor...	10.036	8.466	120.2E6	62492307	50.000	50.000
Target Compounds						
3) L1 AR-1016-1	5.470	4.553	56523697	25296536	500.000	500.000
4) L1 AR-1016-2	5.492	4.571	80325189	35626064	500.000	500.000
5) L1 AR-1016-3	5.554	4.746	51400049	19681074	500.000	500.000
6) L1 AR-1016-4	5.653	4.790	40234576	16653169	500.000	500.000
7) L1 AR-1016-5	5.950	5.003	42208938	21306978	500.000	500.000
31) L7 AR-1260-1	7.084	6.040	75526573	40829370	500.000	500.000
32) L7 AR-1260-2	7.343	6.231	87049876	47942246	500.000	500.000
33) L7 AR-1260-3	7.705	6.383	64690893	46282180	500.000	500.000
34) L7 AR-1260-4	7.931	6.856	73673354	37662546	500.000	500.000
35) L7 AR-1260-5	8.247	7.101	136.3E6	82086917	500.000	500.000

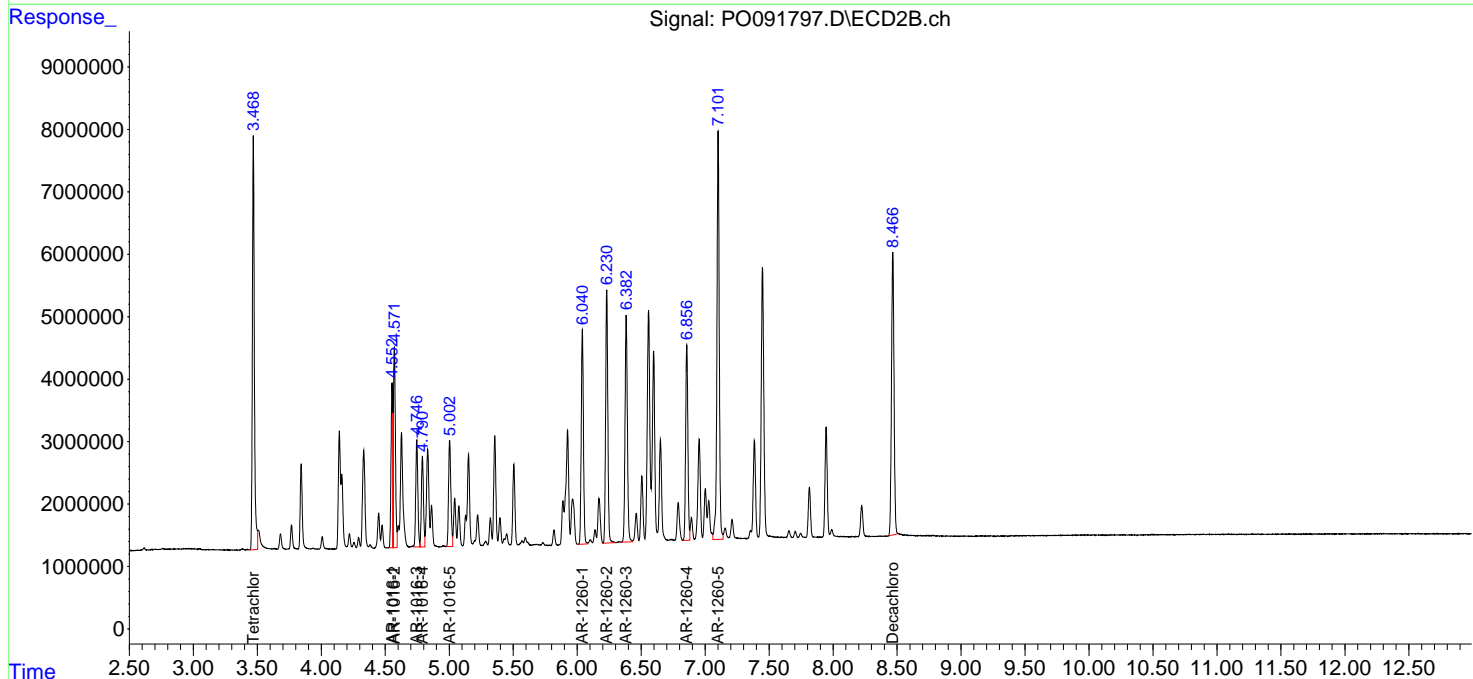
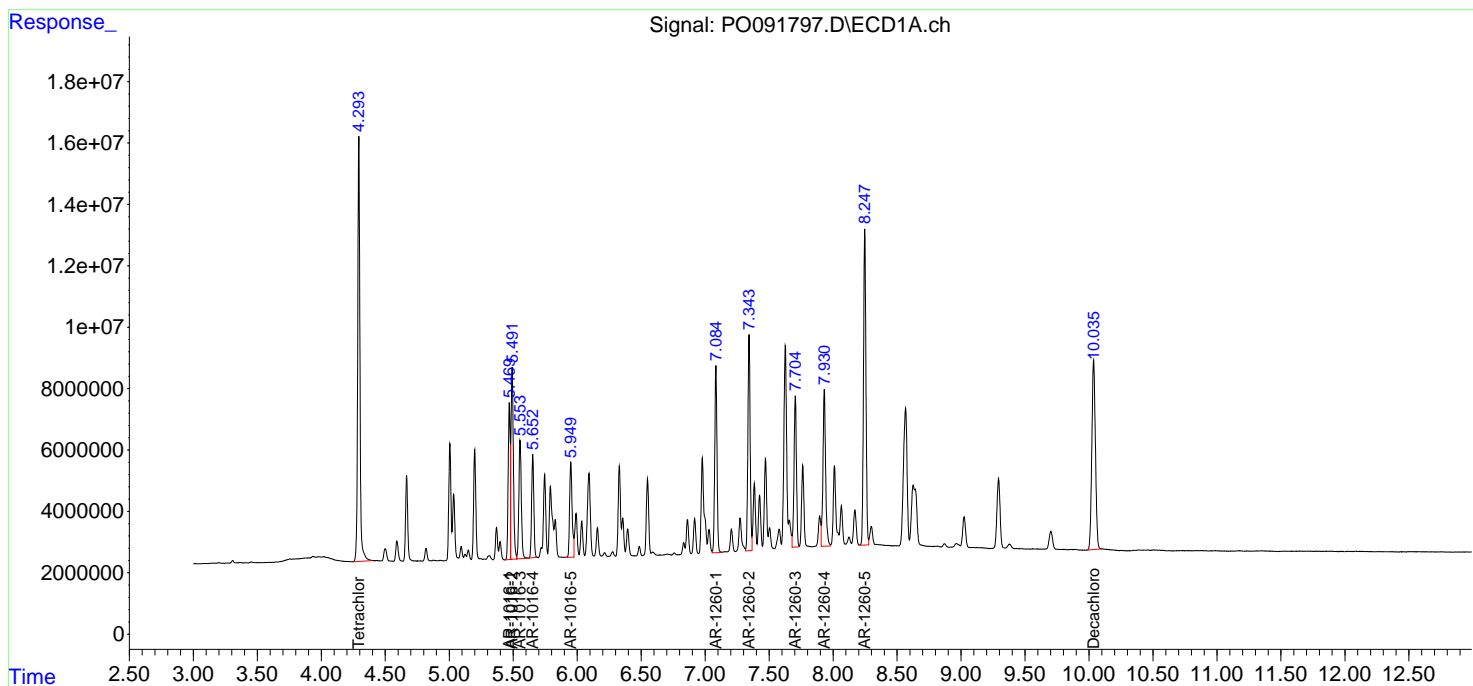
(f)=RT Delta > 1/2 Window (#)=Amounts differ by > 25% (m)=manual int.

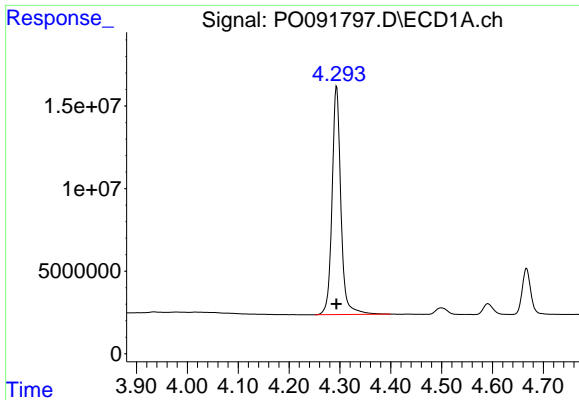
Data Path : Z:\pestpcbsrv\HPCHEM1\ECD_O\Data\P0010423\
 Data File : P0091797.D
 Signal(s) : Signal #1: ECD1A.ch Signal #2: ECD2B.ch
 Acq On : 04 Jan 2023 15:44
 Operator : YP/AJ
 Sample : AR1660ICC500
 Misc :
 ALS Vial : 5 Sample Multiplier: 1

Instrument :
 ECD_O
 ClientSampleId :
 AR1660ICC500

Integration File signal 1: autoint1.e
 Integration File signal 2: autoint2.e
 Quant Time: Jan 04 23:56:04 2023
 Quant Method : Z:\pestpcbsrv\HPCHEM1\ECD_O\methods\P0010423.M
 Quant Title : GC EXTRACTABLES
 QLast Update : Wed Jan 04 23:55:40 2023
 Response via : Initial Calibration
 Integrator: ChemStation

Volume Inj. : 2 µl
 Signal #1 Phase : ZB-MR1 Signal #2 Phase: ZB-MR2
 Signal #1 Info : 30Mx0.32mmx 0.50µ Signal #2 Info : 30M x 0.32mm x 0.25µm

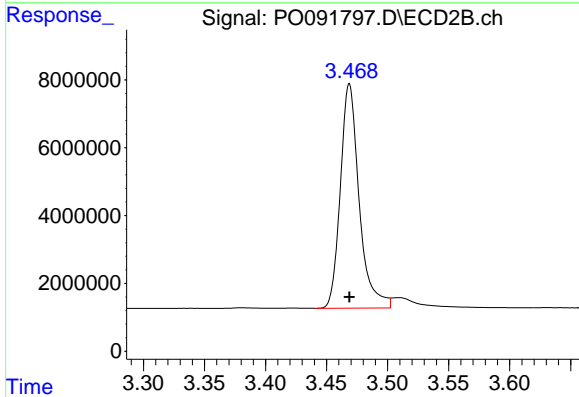




#1 Tetrachloro-m-xylene

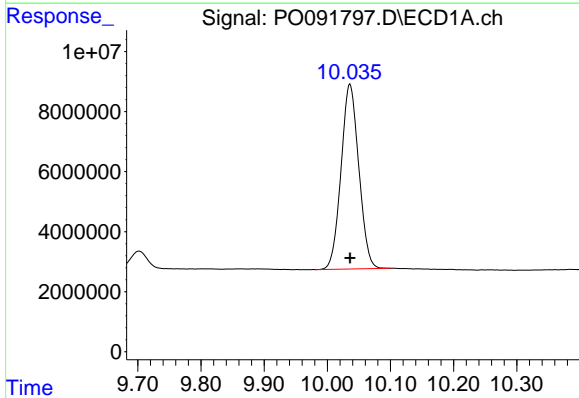
R.T.: 4.293 min
 Delta R.T.: 0.000 min
 Response: 167367780
 Conc: 50.00 ng/ml

Instrument :
 ECD_O
 ClientSampleId :
 AR1660ICC500



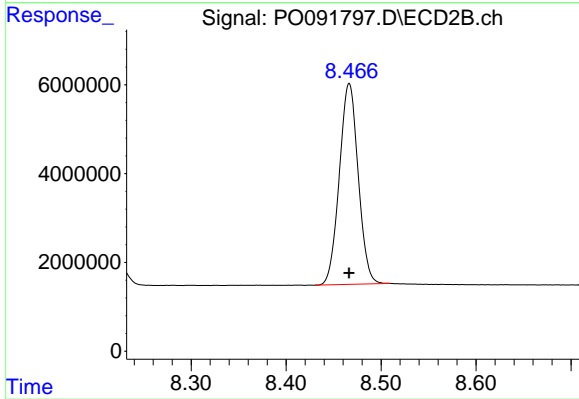
#1 Tetrachloro-m-xylene

R.T.: 3.469 min
 Delta R.T.: 0.000 min
 Response: 70885857
 Conc: 50.00 ng/ml



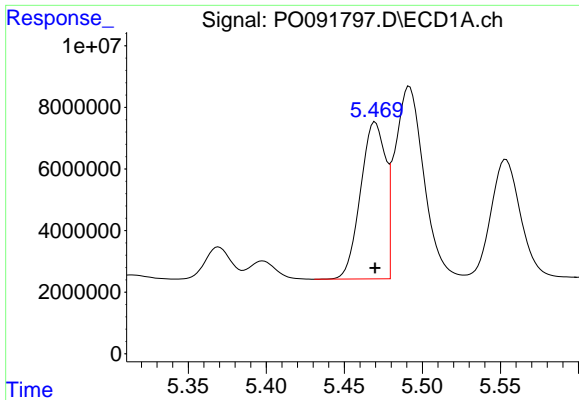
#2 Decachlorobiphenyl

R.T.: 10.036 min
 Delta R.T.: 0.000 min
 Response: 120194776
 Conc: 50.00 ng/ml



#2 Decachlorobiphenyl

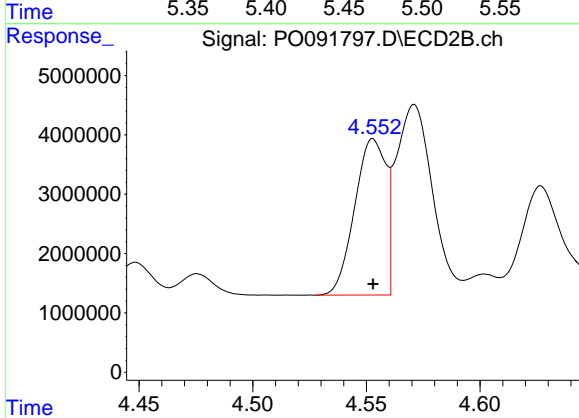
R.T.: 8.466 min
 Delta R.T.: 0.000 min
 Response: 62492307
 Conc: 50.00 ng/ml



#3 AR-1016-1

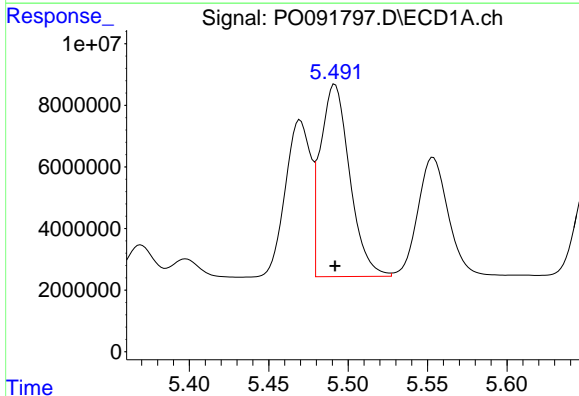
R.T.: 5.470 min
 Delta R.T.: 0.000 min
 Response: 56523697
 Conc: 500.00 ng/ml

Instrument :
 ECD_O
 ClientSampleId :
 AR1660ICC500



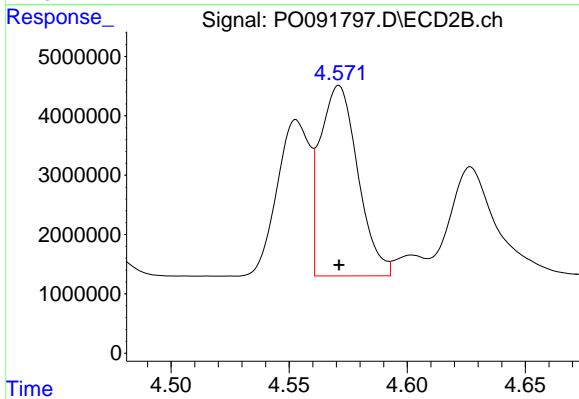
#3 AR-1016-1

R.T.: 4.553 min
 Delta R.T.: 0.000 min
 Response: 25296536
 Conc: 500.00 ng/ml



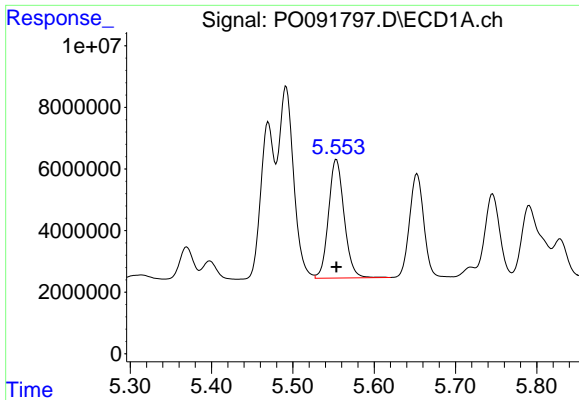
#4 AR-1016-2

R.T.: 5.492 min
 Delta R.T.: 0.000 min
 Response: 80325189
 Conc: 500.00 ng/ml



#4 AR-1016-2

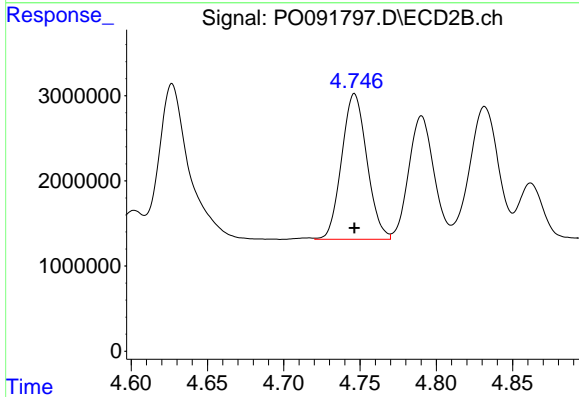
R.T.: 4.571 min
 Delta R.T.: 0.000 min
 Response: 35626064
 Conc: 500.00 ng/ml



#5 AR-1016-3

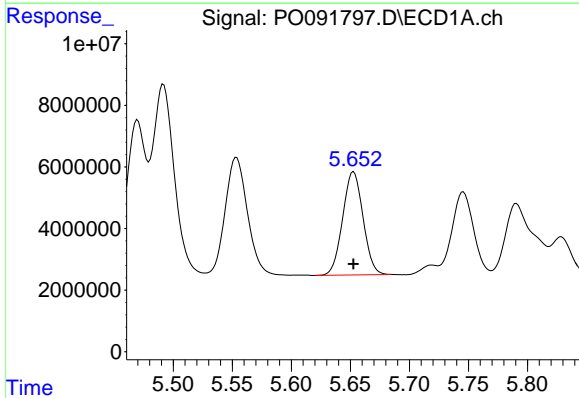
R.T.: 5.554 min
 Delta R.T.: 0.000 min
 Response: 51400049
 Conc: 500.00 ng/ml

Instrument :
 ECD_O
 ClientSampleId :
 AR1660ICC500



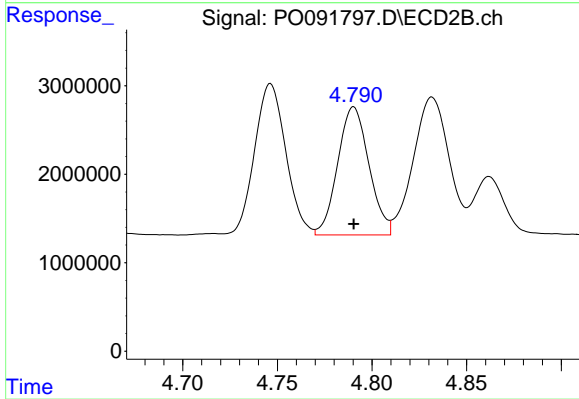
#5 AR-1016-3

R.T.: 4.746 min
 Delta R.T.: 0.000 min
 Response: 19681074
 Conc: 500.00 ng/ml



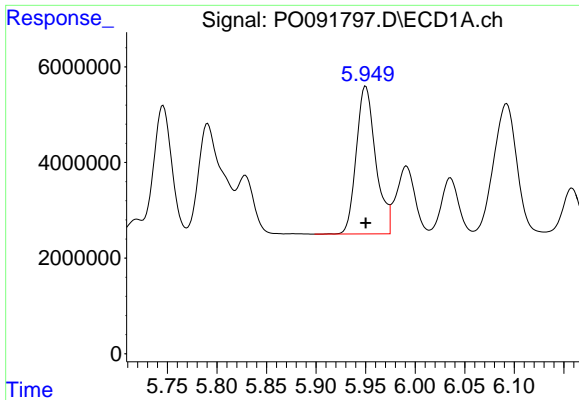
#6 AR-1016-4

R.T.: 5.653 min
 Delta R.T.: 0.000 min
 Response: 40234576
 Conc: 500.00 ng/ml



#6 AR-1016-4

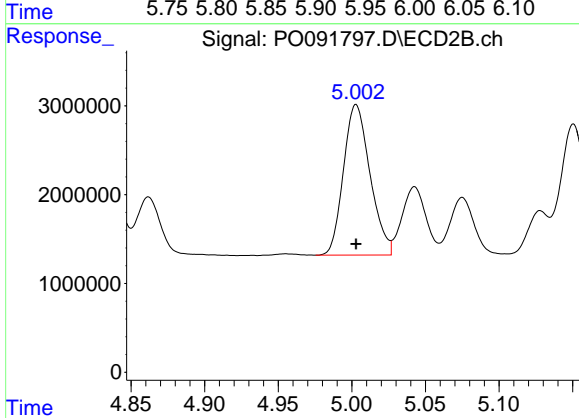
R.T.: 4.790 min
 Delta R.T.: 0.000 min
 Response: 16653169
 Conc: 500.00 ng/ml



#7 AR-1016-5

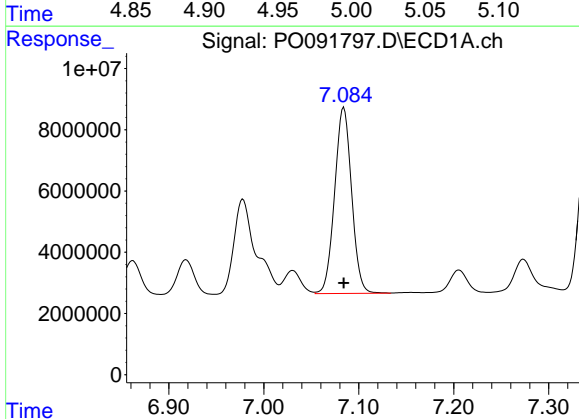
R.T.: 5.950 min
Delta R.T.: 0.000 min
Response: 42208938
Conc: 500.00 ng/ml

Instrument :
ECD_O
ClientSampleId :
AR1660ICC500



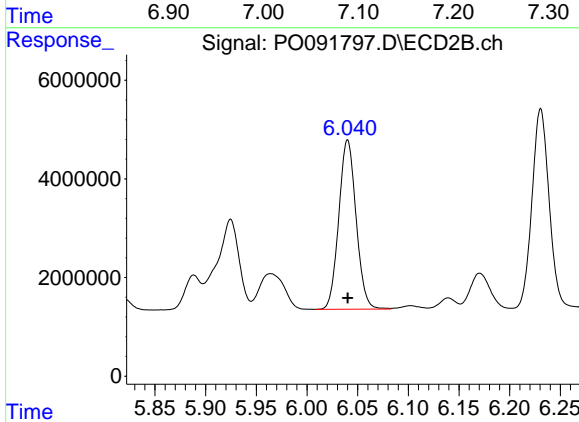
#7 AR-1016-5

R.T.: 5.003 min
Delta R.T.: 0.000 min
Response: 21306978
Conc: 500.00 ng/ml



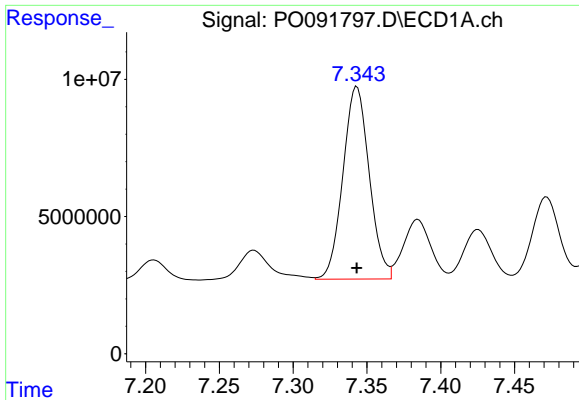
#31 AR-1260-1

R.T.: 7.084 min
Delta R.T.: 0.000 min
Response: 75526573
Conc: 500.00 ng/ml



#31 AR-1260-1

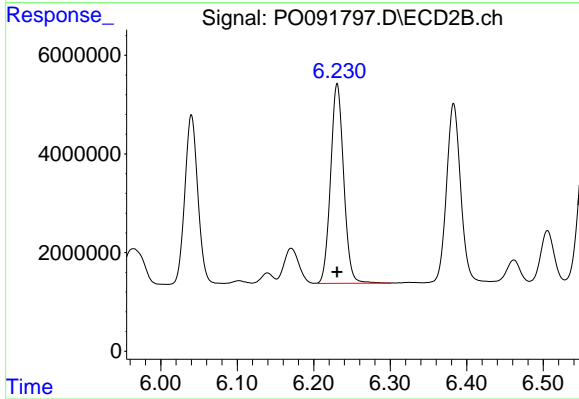
R.T.: 6.040 min
Delta R.T.: 0.000 min
Response: 40829370
Conc: 500.00 ng/ml



#32 AR-1260-2

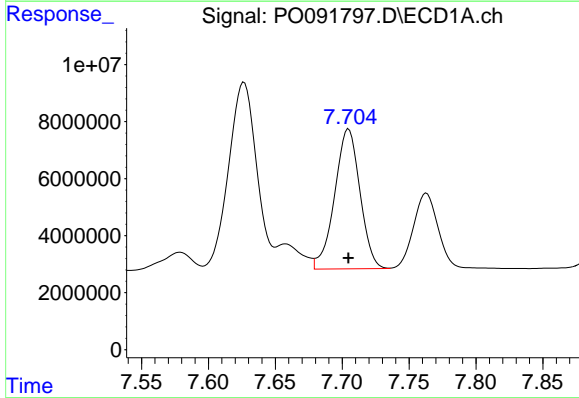
R.T.: 7.343 min
Delta R.T.: 0.000 min
Response: 87049876
Conc: 500.00 ng/ml

Instrument :
ECD_O
ClientSampleId :
AR1660ICC500



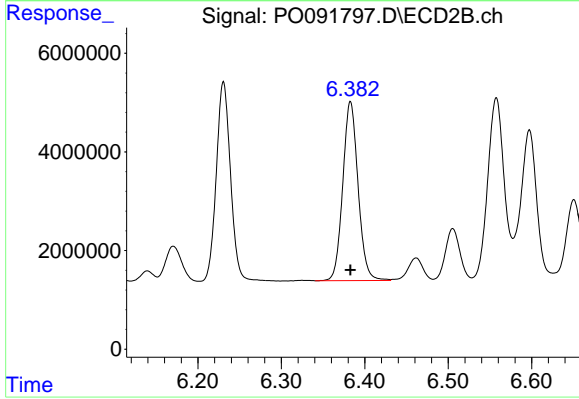
#32 AR-1260-2

R.T.: 6.231 min
Delta R.T.: 0.000 min
Response: 47942246
Conc: 500.00 ng/ml



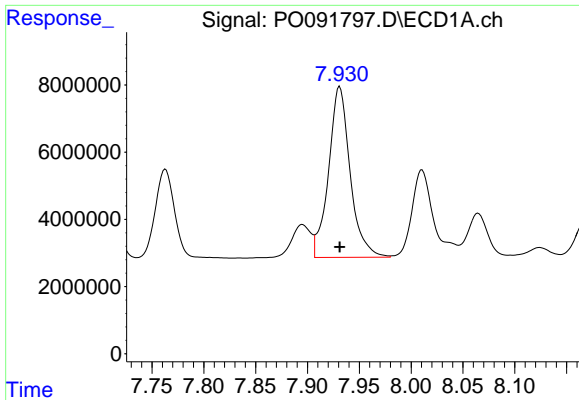
#33 AR-1260-3

R.T.: 7.705 min
Delta R.T.: 0.000 min
Response: 64690893
Conc: 500.00 ng/ml



#33 AR-1260-3

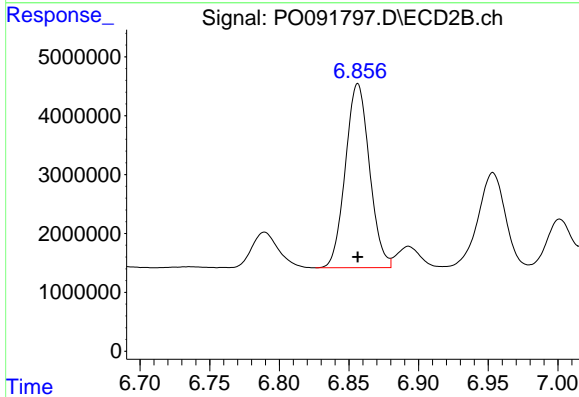
R.T.: 6.383 min
Delta R.T.: 0.000 min
Response: 46282180
Conc: 500.00 ng/ml



#34 AR-1260-4

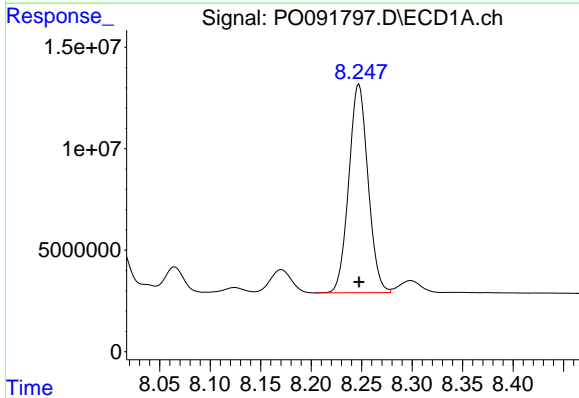
R.T.: 7.931 min
 Delta R.T.: 0.000 min
 Response: 73673354
 Conc: 500.00 ng/ml

Instrument :
 ECD_O
 ClientSampleId :
 AR1660ICC500



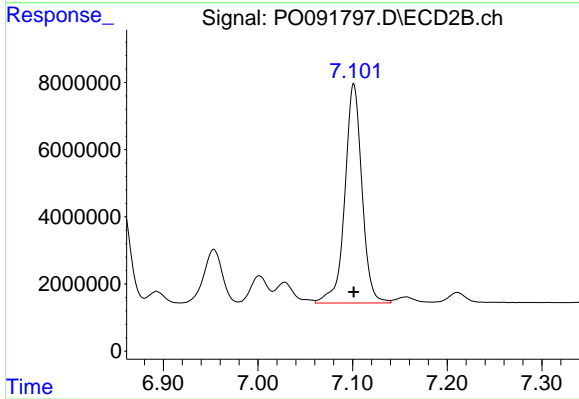
#34 AR-1260-4

R.T.: 6.856 min
 Delta R.T.: 0.000 min
 Response: 37662546
 Conc: 500.00 ng/ml



#35 AR-1260-5

R.T.: 8.247 min
 Delta R.T.: 0.000 min
 Response: 136320125
 Conc: 500.00 ng/ml



#35 AR-1260-5

R.T.: 7.101 min
 Delta R.T.: 0.000 min
 Response: 82086917
 Conc: 500.00 ng/ml