

Data Path : Z:\pestpcbsrv\HPCHEM1\ECD_0\Data\P0010424\
 Data File : P0100906.D
 Signal(s) : Signal #1: ECD1A.ch Signal #2: ECD2B.ch
 Acq On : 04 Jan 2024 14:43
 Operator : YP/AJ
 Sample : P1005-01
 Misc :
 ALS Vial : 9 Sample Multiplier: 1

Instrument :
 ECD_0
 ClientSampleId :
 RBR200030

Integration File signal 1: autoint1.e
 Integration File signal 2: autoint2.e
 Quant Time: Jan 04 23:29:37 2024
 Quant Method : Z:\pestpcbsrv\HPCHEM1\ECD_0\methods\P0122023.M
 Quant Title : GC EXTRACTABLES
 QLast Update : Thu Dec 21 04:28:19 2023
 Response via : Initial Calibration
 Integrator: ChemStation

Volume Inj. : 2 µl
 Signal #1 Phase : ZB-MR1 Signal #2 Phase: ZB-MR2
 Signal #1 Info : 30Mx0.32mmx 0.50µ Signal #2 Info : 30M x 0.32mm x 0.25µm

Compound	RT#1	RT#2	Resp#1	Resp#2	ng/ml	ng/ml

System Monitoring Compounds						
1) SA Tetrachlo...	4.346	3.642	88828253	56478432	28.468	27.639
2) SA Decachlor...	10.088	8.703	46067780	36412961	22.051	24.125

Target Compounds

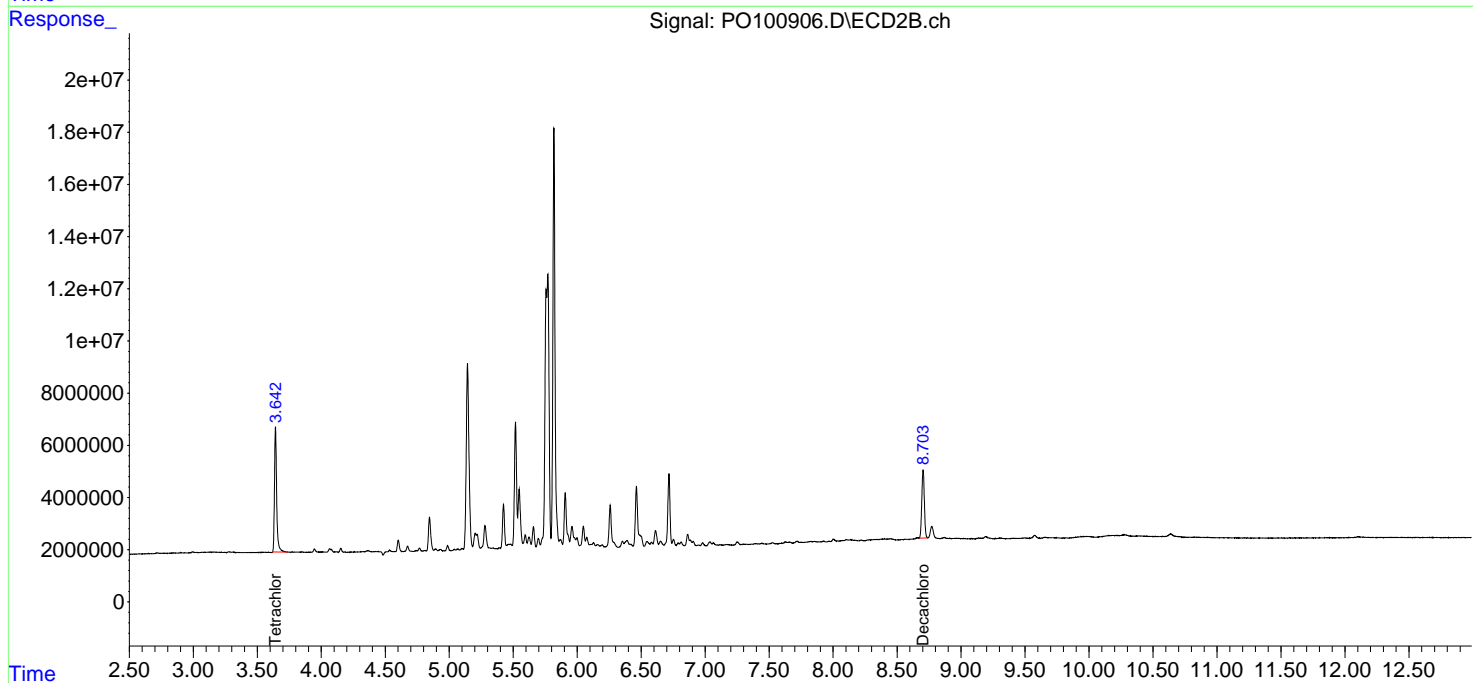
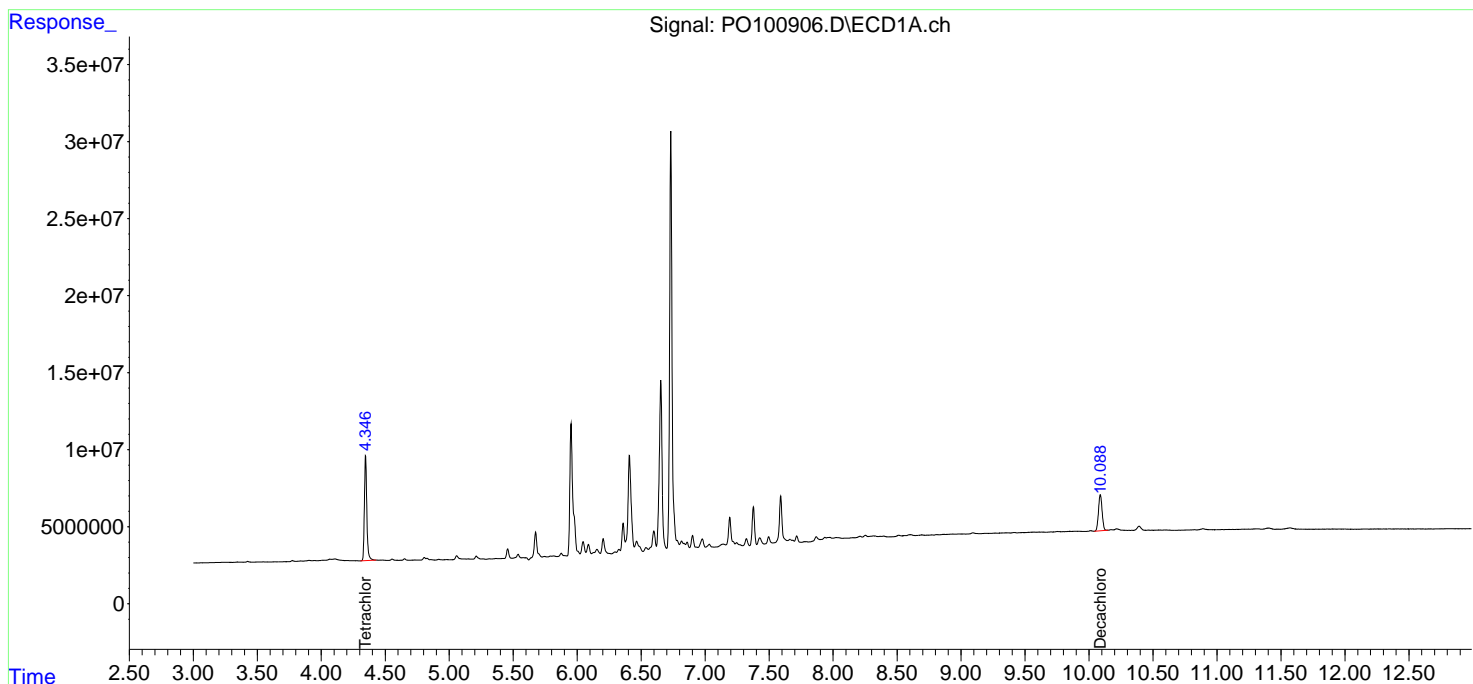
(f)=RT Delta > 1/2 Window (#)=Amounts differ by > 25% (m)=manual int.

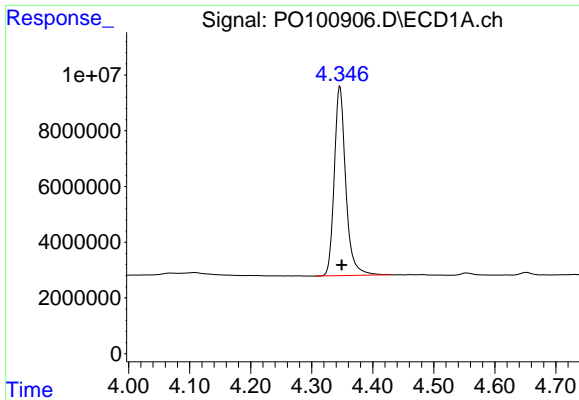
Data Path : Z:\pestpcbsrv\HPCHEM1\ECD_O\Data\PO010424\
 Data File : PO100906.D
 Signal(s) : Signal #1: ECD1A.ch Signal #2: ECD2B.ch
 Acq On : 04 Jan 2024 14:43
 Operator : YP/AJ
 Sample : P1005-01
 Misc :
 ALS Vial : 9 Sample Multiplier: 1

Instrument :
 ECD_O
 ClientSampleId :
 RBR200030

Integration File signal 1: autoint1.e
 Integration File signal 2: autoint2.e
 Quant Time: Jan 04 23:29:37 2024
 Quant Method : Z:\pestpcbsrv\HPCHEM1\ECD_O\methods\PO122023.M
 Quant Title : GC EXTRACTABLES
 QLast Update : Thu Dec 21 04:28:19 2023
 Response via : Initial Calibration
 Integrator: ChemStation

Volume Inj. : 2 µl
 Signal #1 Phase : ZB-MR1 Signal #2 Phase: ZB-MR2
 Signal #1 Info : 30Mx0.32mmx 0.50µ Signal #2 Info : 30M x 0.32mm x 0.25µm

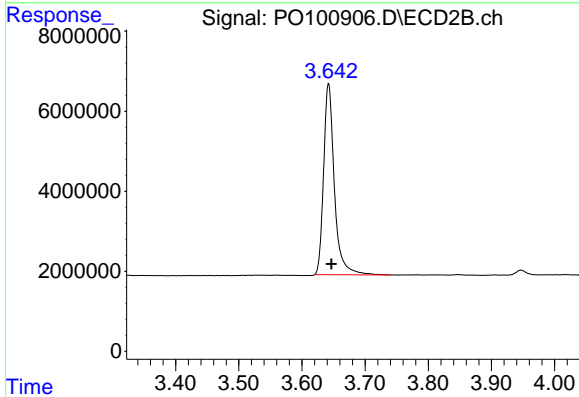




#1 Tetrachloro-m-xylene

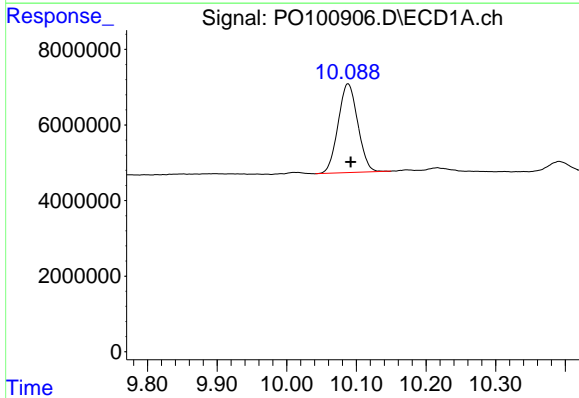
R.T.: 4.346 min
 Delta R.T.: -0.003 min
 Response: 88828253
 Conc: 28.47 ng/ml

Instrument :
 ECD_O
 ClientSampleId :
 RBR200030



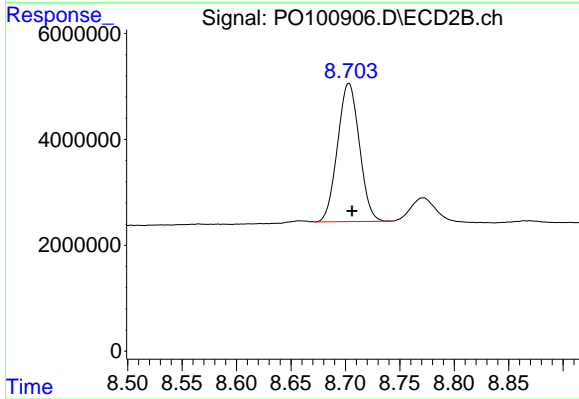
#1 Tetrachloro-m-xylene

R.T.: 3.642 min
 Delta R.T.: -0.004 min
 Response: 56478432
 Conc: 27.64 ng/ml



#2 Decachlorobiphenyl

R.T.: 10.088 min
 Delta R.T.: -0.004 min
 Response: 46067780
 Conc: 22.05 ng/ml



#2 Decachlorobiphenyl

R.T.: 8.703 min
 Delta R.T.: -0.003 min
 Response: 36412961
 Conc: 24.12 ng/ml