

Data Path : Z:\pestpcbsrv\HPCHEM1\ECD\_0\Data\P0010521\  
 Data File : P0074387.D  
 Signal(s) : Signal #1: ECD1A.CH Signal #2: ECD2B.CH  
 Acq On : 05 Jan 2021 16:16  
 Operator : DD\AJ  
 Sample : M1007-01  
 Misc :  
 ALS Vial : 20 Sample Multiplier: 1

Instrument :  
 ECD\_0  
 ClientSampleId :  
 R-LA-22-1-WC

Integration File signal 1: autoint1.e  
 Integration File signal 2: autoint2.e  
 Quant Time: Jan 05 17:11:34 2021  
 Quant Method : Z:\pestpcbsrv\HPCHEM1\ECD\_0\methods\P0010421.M  
 Quant Title : GC EXTRACTABLES  
 QLast Update : Tue Jan 05 05:03:05 2021  
 Response via : Initial Calibration  
 Integrator: ChemStation 6890 Scale Mode: Small noise peaks clipped

Volume Inj. : 2 µl  
 Signal #1 Phase : ZB-MR1 Signal #2 Phase: ZB-MR2  
 Signal #1 Info : 30Mx0.32mmx 0.50µ Signal #2 Info : 30M x 0.32mm x 0.25µm

| Compound                    | RT#1   | RT#2  | Resp#1  | Resp#2  | ng/ml  | ng/ml  |
|-----------------------------|--------|-------|---------|---------|--------|--------|
| -----                       |        |       |         |         |        |        |
| System Monitoring Compounds |        |       |         |         |        |        |
| 1) SA Tetrachlo...          | 4.933  | 3.989 | 1909508 | 1105453 | 19.873 | 20.753 |
| 2) SA Decachlor...          | 10.956 | 9.248 | 859802  | 481287  | 9.249  | 9.245  |

Target Compounds

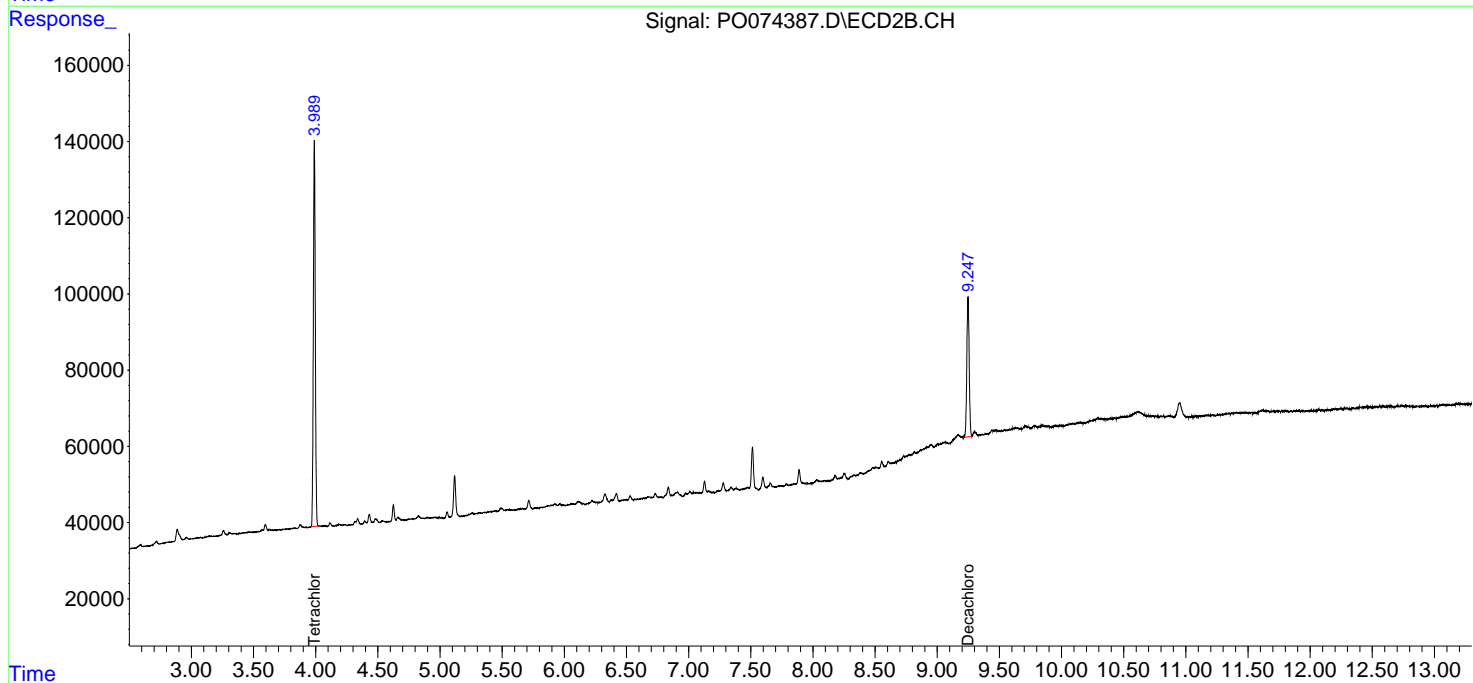
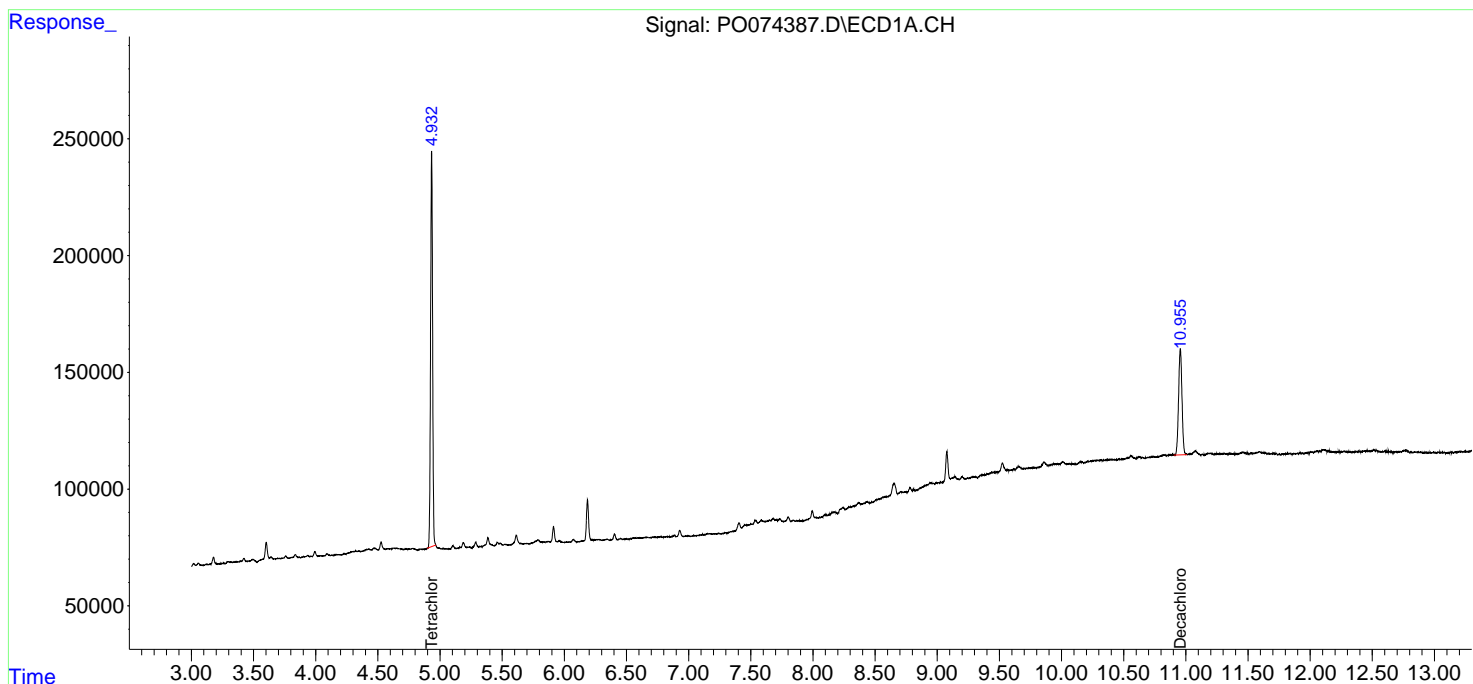
(f)=RT Delta > 1/2 Window (#)=Amounts differ by > 25% (m)=manual int.

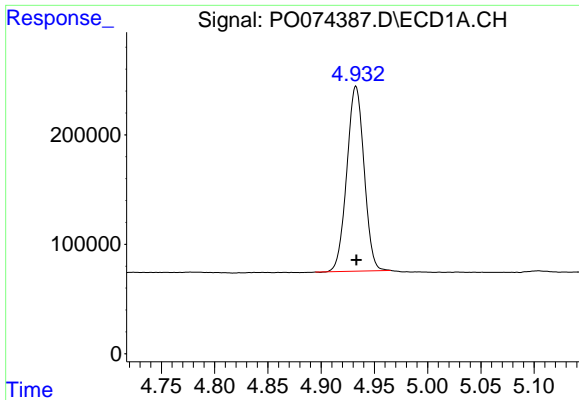
Data Path : Z:\pestpcbsrv\HPCHEM1\ECD\_0\Data\P0010521\  
 Data File : P0074387.D  
 Signal(s) : Signal #1: ECD1A.CH Signal #2: ECD2B.CH  
 Acq On : 05 Jan 2021 16:16  
 Operator : DD\AJ  
 Sample : M1007-01  
 Misc :  
 ALS Vial : 20 Sample Multiplier: 1

Instrument :  
 ECD\_O  
 ClientSampleId :  
 R-LA-22-1-WC

Integration File signal 1: autoint1.e  
 Integration File signal 2: autoint2.e  
 Quant Time: Jan 05 17:11:34 2021  
 Quant Method : Z:\pestpcbsrv\HPCHEM1\ECD\_0\methods\P0010421.M  
 Quant Title : GC EXTRACTABLES  
 QLast Update : Tue Jan 05 05:03:05 2021  
 Response via : Initial Calibration  
 Integrator: ChemStation 6890 Scale Mode: Small noise peaks clipped

Volume Inj. : 2 µl  
 Signal #1 Phase : ZB-MR1 Signal #2 Phase: ZB-MR2  
 Signal #1 Info : 30Mx0.32mmx 0.50µ Signal #2 Info : 30M x 0.32mm x 0.25µm

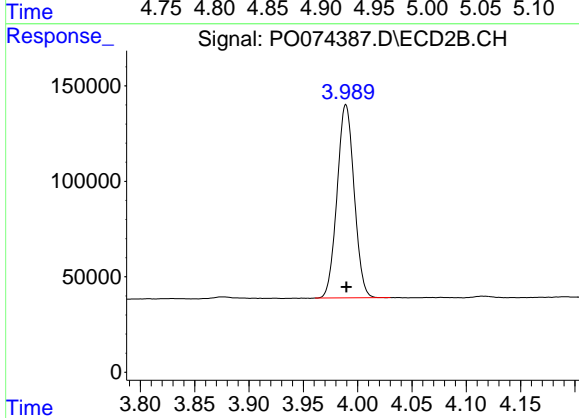




#1 Tetrachloro-m-xylene

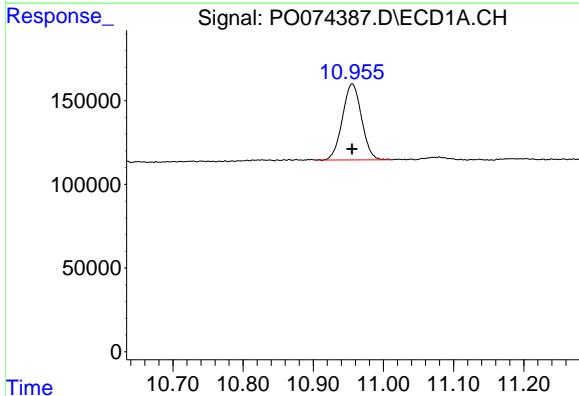
R.T.: 4.933 min  
 Delta R.T.: 0.000 min  
 Response: 1909508  
 Conc: 19.87 ng/ml

Instrument :  
 ECD\_O  
 ClientSampleId :  
 R-LA-22-1-WC



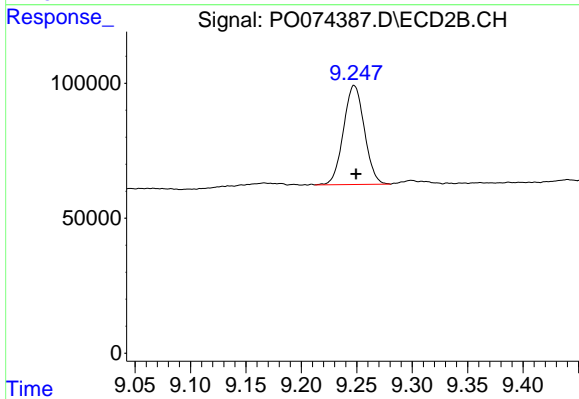
#1 Tetrachloro-m-xylene

R.T.: 3.989 min  
 Delta R.T.: 0.000 min  
 Response: 1105453  
 Conc: 20.75 ng/ml



#2 Decachlorobiphenyl

R.T.: 10.956 min  
 Delta R.T.: 0.000 min  
 Response: 859802  
 Conc: 9.25 ng/ml



#2 Decachlorobiphenyl

R.T.: 9.248 min  
 Delta R.T.: -0.002 min  
 Response: 481287  
 Conc: 9.25 ng/ml