

Data Path : Z:\pestpcbsrv\HPCHEM1\ECD\_0\Data\P0010523\  
 Data File : P0091856.D  
 Signal(s) : Signal #1: ECD1A.ch Signal #2: ECD2B.ch  
 Acq On : 05 Jan 2023 17:07  
 Operator : YP/AJ  
 Sample : 01029-01MSD  
 Misc :  
 ALS Vial : 22 Sample Multiplier: 1

Instrument :  
 ECD\_0  
 ClientSampleId :  
 TP-205MSD

Integration File signal 1: autoint1.e  
 Integration File signal 2: autoint2.e  
 Quant Time: Jan 05 20:44:22 2023  
 Quant Method : Z:\pestpcbsrv\HPCHEM1\ECD\_0\methods\P0010423.M  
 Quant Title : GC EXTRACTABLES  
 QLast Update : Thu Jan 05 01:51:19 2023  
 Response via : Initial Calibration  
 Integrator: ChemStation

Volume Inj. : 2 µl  
 Signal #1 Phase : ZB-MR2 Signal #2 Phase: ZB-MR2  
 Signal #1 Info : 30Mx0.32mmx 0.50µ Signal #2 Info : 30M x 0.32mm x 0.25µm

Compound	RT#1	RT#2	Resp#1	Resp#2	ng/ml	ng/ml
-----						
System Monitoring Compounds						
1) SA Tetrachlo...	4.291	3.469	82475807	34129348	25.665	24.722
2) SA Decachlor...	10.032	8.463	48980819	27303802	20.634	21.694
Target Compounds						
3) L1 AR-1016-1	5.467	4.552	53757420	23966802	484.244	485.851
4) L1 AR-1016-2	5.489	4.570	79241379	33994480	501.517	483.399
5) L1 AR-1016-3	5.552	4.746	50116872	18840276	482.696	482.977
6) L1 AR-1016-4	5.650	4.789	33718941	15888624	427.451	487.342
7) L1 AR-1016-5	5.947	5.001	35412399	19750636	405.361	477.092
31) L7 AR-1260-1	7.081	6.038	92197599	34968328	598.807	426.325 #
32) L7 AR-1260-2	7.340	6.228	145.5E6	40205610	819.021	415.251 #
33) L7 AR-1260-3	7.701	6.381	44648171	39139420	347.618	399.966
34) L7 AR-1260-4	7.928	6.854	45744948	26955156	306.022	358.339
35) L7 AR-1260-5	0.000	7.099	0	58094089	N.D.	351.690 #

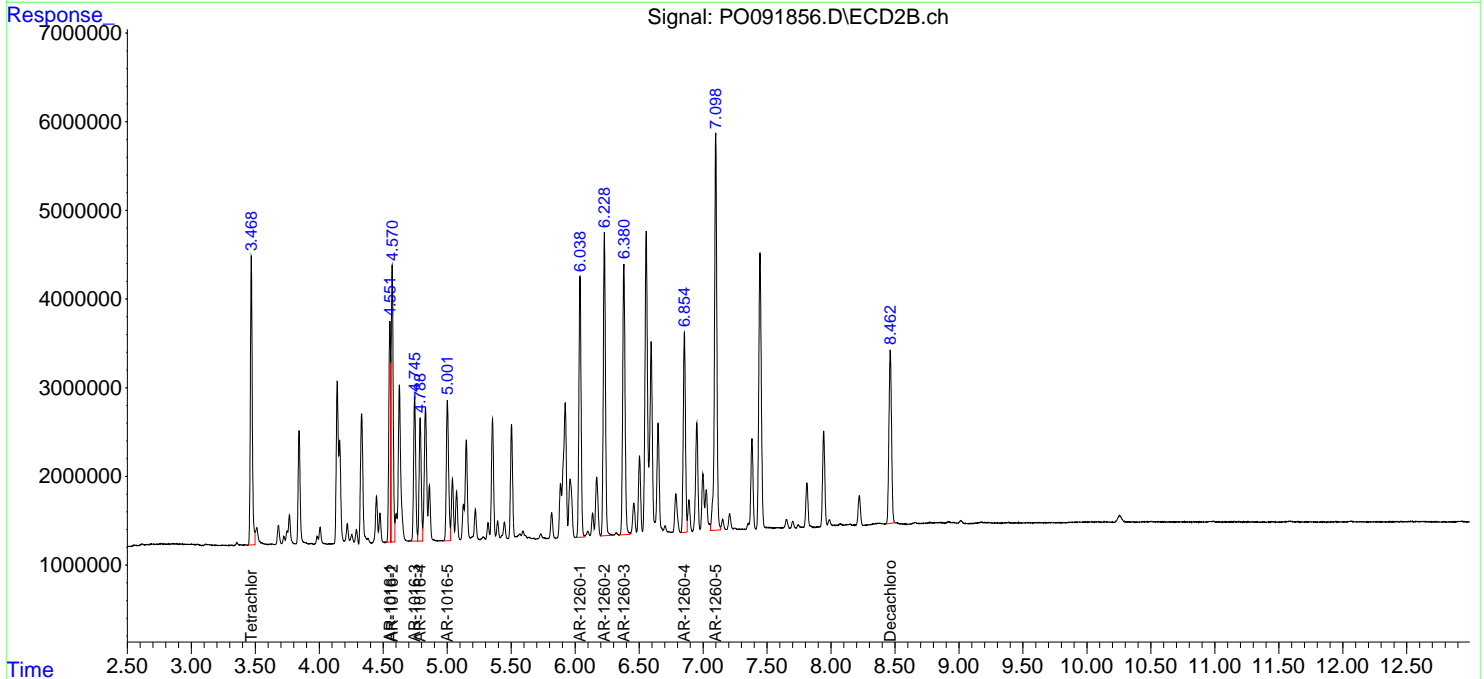
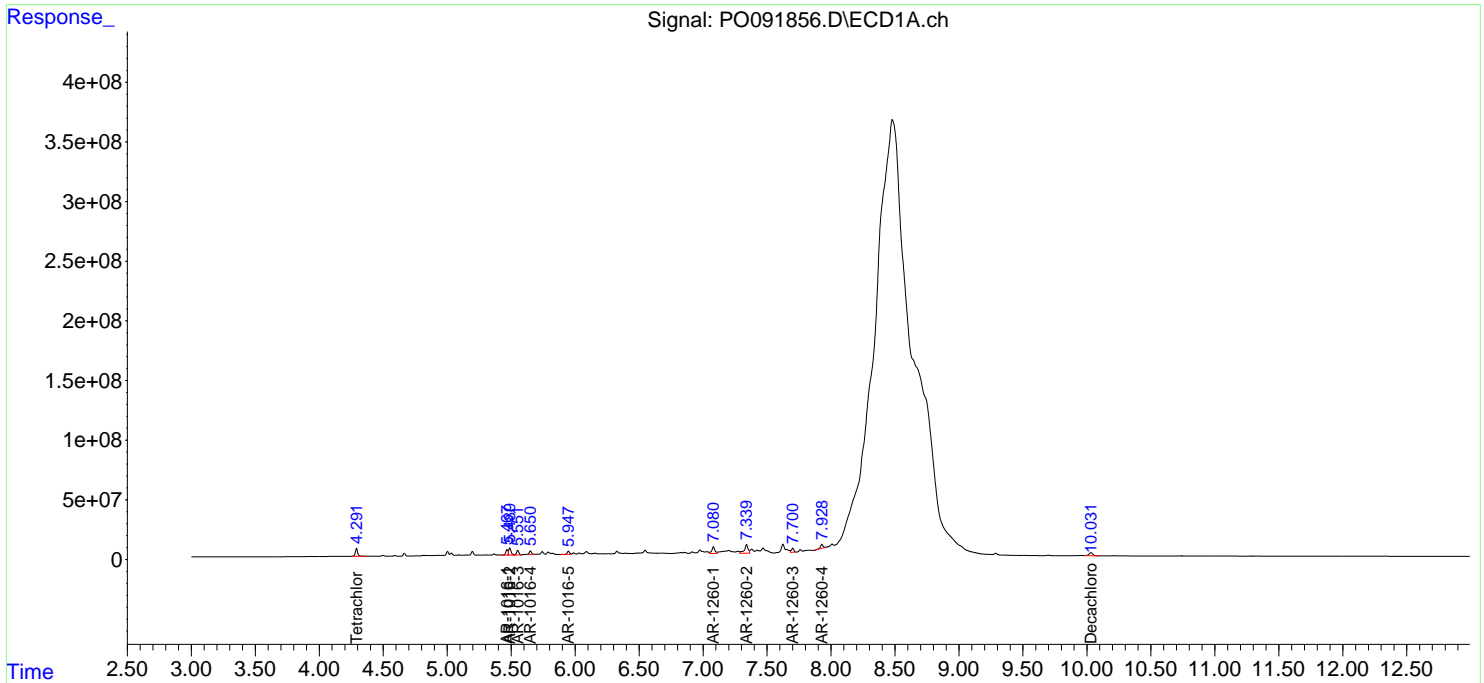
(f)=RT Delta > 1/2 Window (#)=Amounts differ by > 25% (m)=manual int.

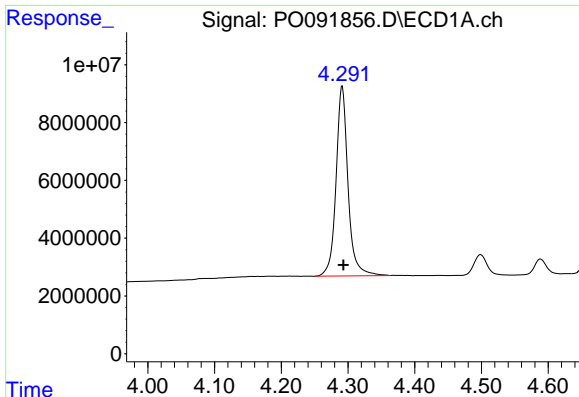
Data Path : Z:\pestpcbsrv\HPCHEM1\ECD\_O\Data\P0010523\  
 Data File : P0091856.D  
 Signal(s) : Signal #1: ECD1A.ch Signal #2: ECD2B.ch  
 Acq On : 05 Jan 2023 17:07  
 Operator : YP/AJ  
 Sample : 01029-01MSD  
 Misc :  
 ALS Vial : 22 Sample Multiplier: 1

Instrument :  
 ECD\_O  
 ClientSampleId :  
 TP-205MSD

Integration File signal 1: autoint1.e  
 Integration File signal 2: autoint2.e  
 Quant Time: Jan 05 20:44:22 2023  
 Quant Method : Z:\pestpcbsrv\HPCHEM1\ECD\_O\methods\P0010423.M  
 Quant Title : GC EXTRACTABLES  
 QLast Update : Thu Jan 05 01:51:19 2023  
 Response via : Initial Calibration  
 Integrator: ChemStation

Volume Inj. : 2 µl  
 Signal #1 Phase : ZB-MR1 Signal #2 Phase: ZB-MR2  
 Signal #1 Info : 30Mx0.32mmx 0.50µ Signal #2 Info : 30M x 0.32mm x 0.25µm

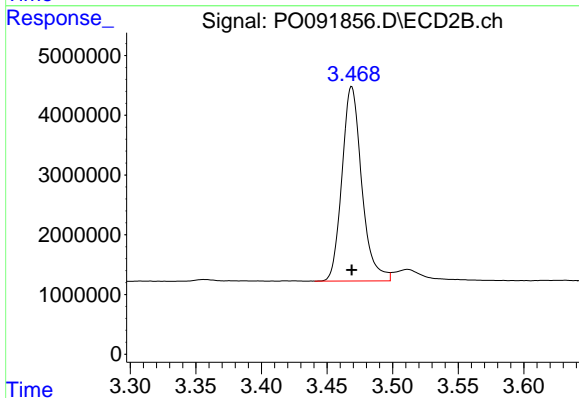




#1 Tetrachloro-m-xylene

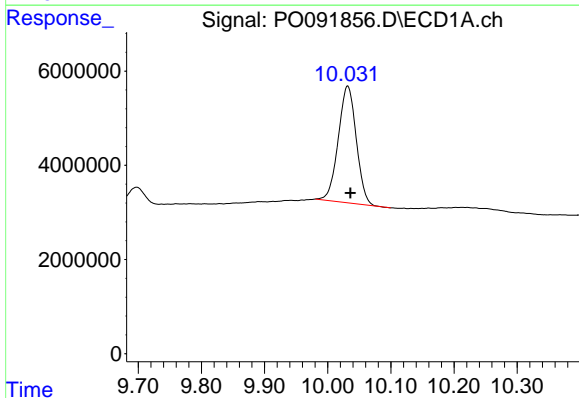
R.T.: 4.291 min  
 Delta R.T.: -0.002 min  
 Response: 82475807  
 Conc: 25.66 ng/ml

Instrument :  
 ECD\_O  
 ClientSampleId :  
 TP-205MSD



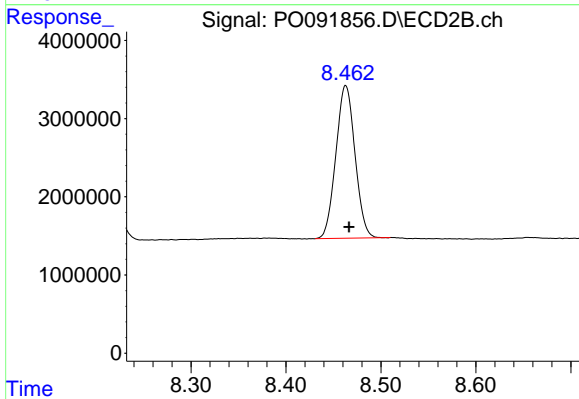
#1 Tetrachloro-m-xylene

R.T.: 3.469 min  
 Delta R.T.: 0.000 min  
 Response: 34129348  
 Conc: 24.72 ng/ml



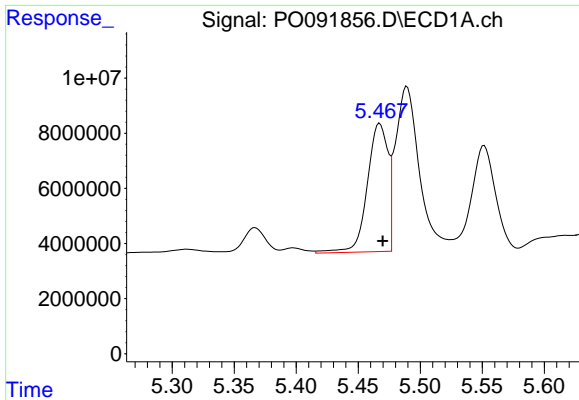
#2 Decachlorobiphenyl

R.T.: 10.032 min  
 Delta R.T.: -0.004 min  
 Response: 48980819  
 Conc: 20.63 ng/ml



#2 Decachlorobiphenyl

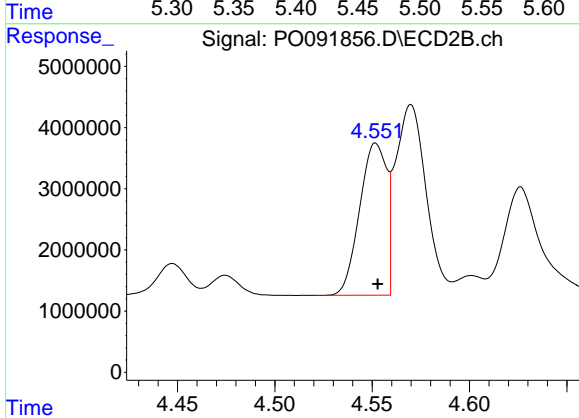
R.T.: 8.463 min  
 Delta R.T.: -0.003 min  
 Response: 27303802  
 Conc: 21.69 ng/ml



#3 AR-1016-1

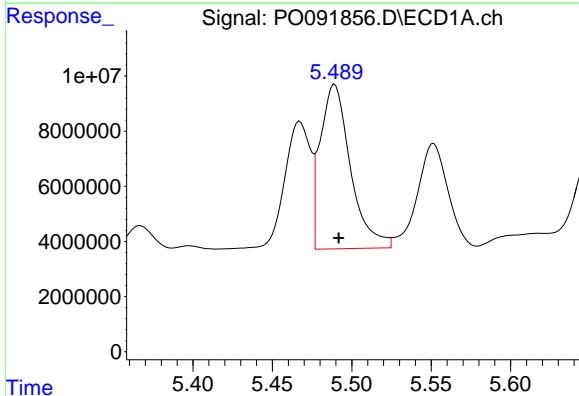
R.T.: 5.467 min  
 Delta R.T.: -0.002 min  
 Response: 53757420  
 Conc: 484.24 ng/ml

Instrument :  
 ECD\_O  
 ClientSampleId :  
 TP-205MSD



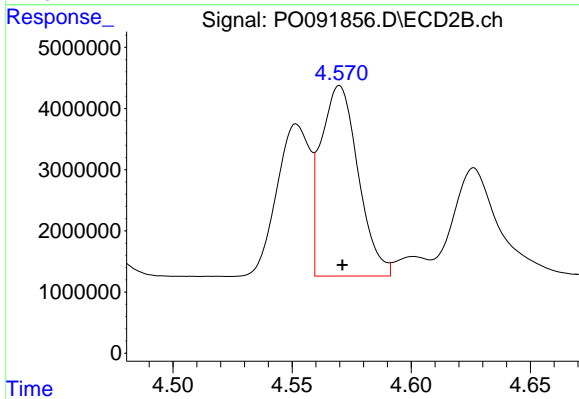
#3 AR-1016-1

R.T.: 4.552 min  
 Delta R.T.: -0.001 min  
 Response: 23966802  
 Conc: 485.85 ng/ml



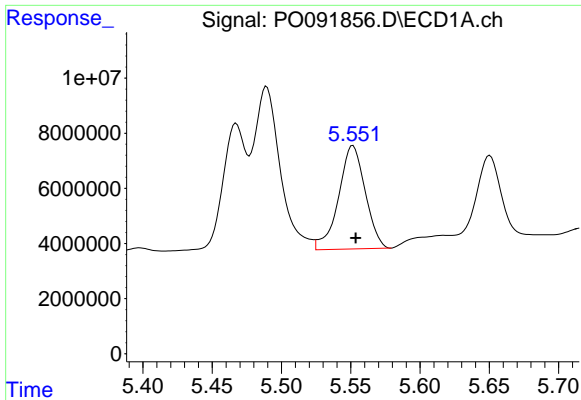
#4 AR-1016-2

R.T.: 5.489 min  
 Delta R.T.: -0.002 min  
 Response: 79241379  
 Conc: 501.52 ng/ml



#4 AR-1016-2

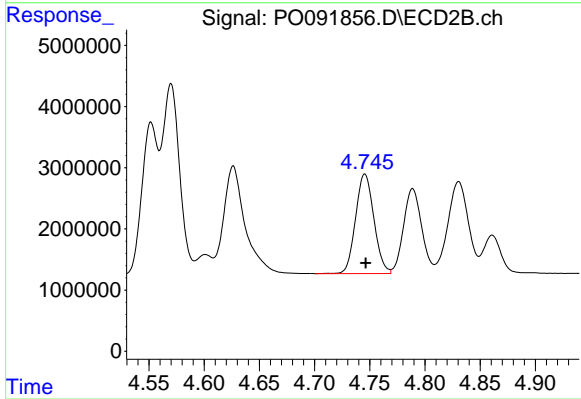
R.T.: 4.570 min  
 Delta R.T.: -0.001 min  
 Response: 33994480  
 Conc: 483.40 ng/ml



#5 AR-1016-3

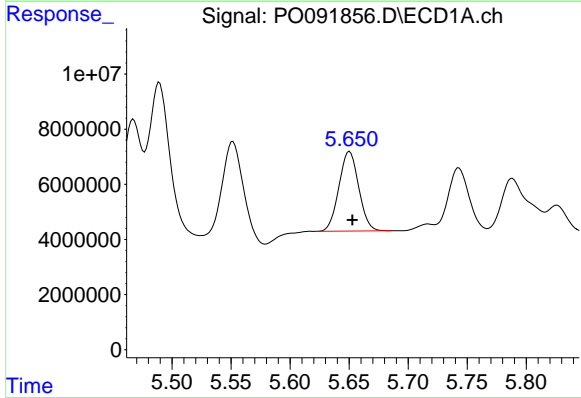
R.T.: 5.552 min  
Delta R.T.: -0.002 min  
Response: 50116872  
Conc: 482.70 ng/ml

Instrument :  
ECD\_O  
ClientSampleId :  
TP-205MSD



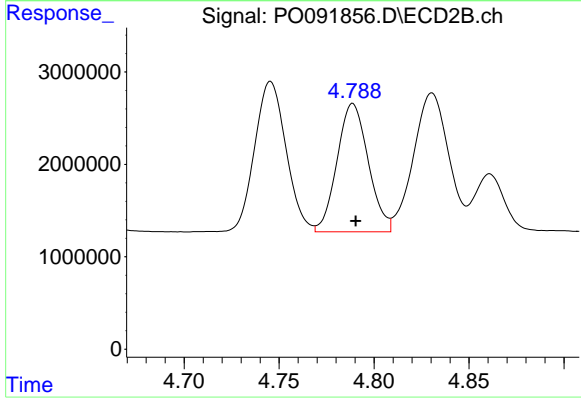
#5 AR-1016-3

R.T.: 4.746 min  
Delta R.T.: 0.000 min  
Response: 18840276  
Conc: 482.98 ng/ml



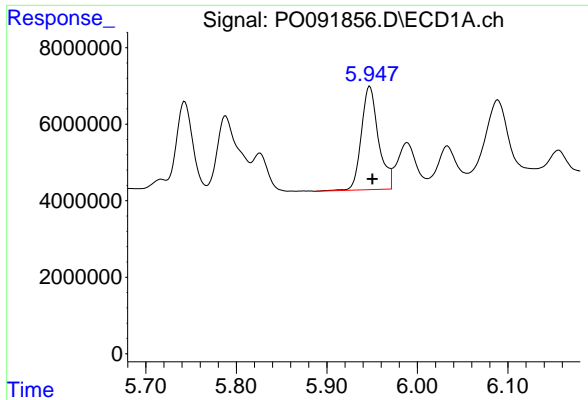
#6 AR-1016-4

R.T.: 5.650 min  
Delta R.T.: -0.002 min  
Response: 33718941  
Conc: 427.45 ng/ml



#6 AR-1016-4

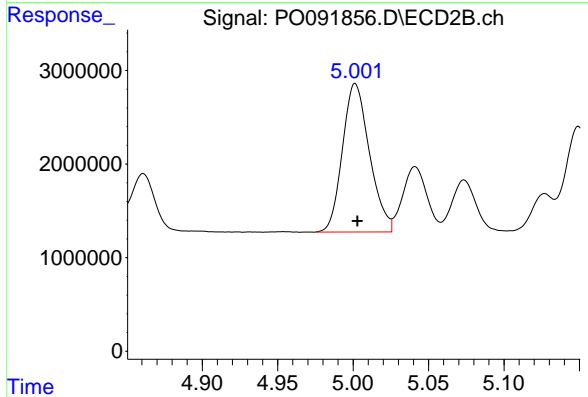
R.T.: 4.789 min  
Delta R.T.: -0.002 min  
Response: 15888624  
Conc: 487.34 ng/ml



#7 AR-1016-5

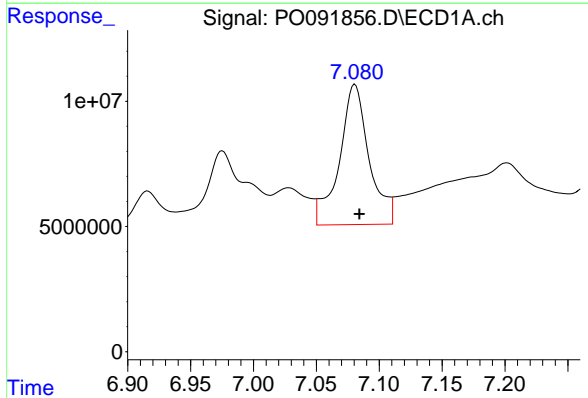
R.T.: 5.947 min  
 Delta R.T.: -0.003 min  
 Response: 35412399  
 Conc: 405.36 ng/ml

Instrument :  
 ECD\_O  
 ClientSampleId :  
 TP-205MSD



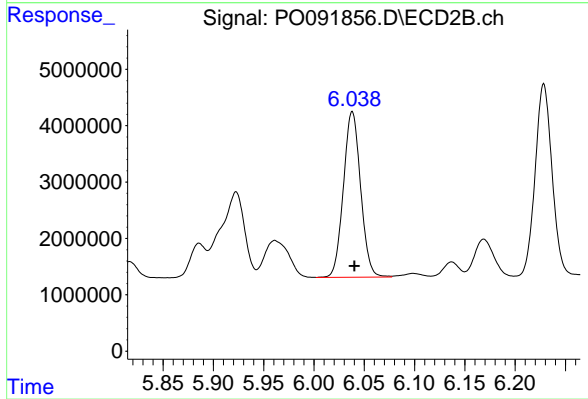
#7 AR-1016-5

R.T.: 5.001 min  
 Delta R.T.: -0.001 min  
 Response: 19750636  
 Conc: 477.09 ng/ml



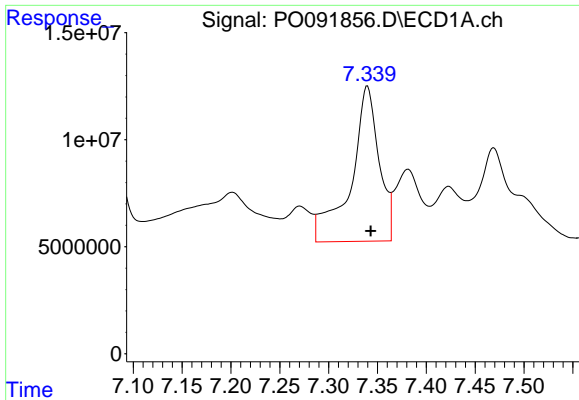
#31 AR-1260-1

R.T.: 7.081 min  
 Delta R.T.: -0.004 min  
 Response: 92197599  
 Conc: 598.81 ng/ml



#31 AR-1260-1

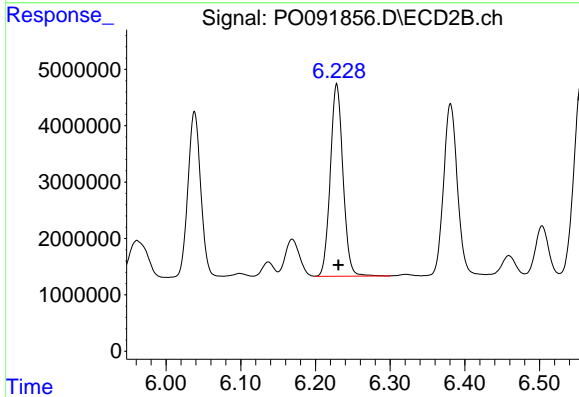
R.T.: 6.038 min  
 Delta R.T.: -0.002 min  
 Response: 34968328  
 Conc: 426.33 ng/ml



#32 AR-1260-2

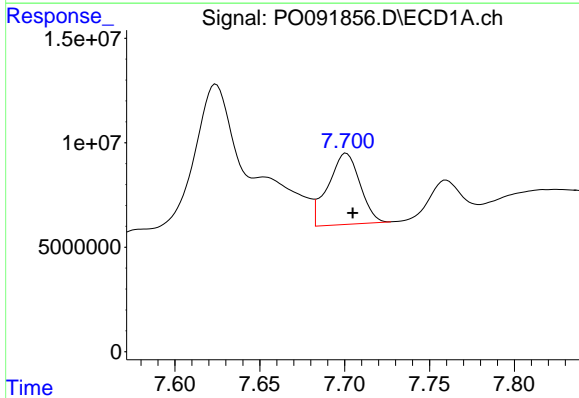
R.T.: 7.340 min  
 Delta R.T.: -0.003 min  
 Response: 145528199  
 Conc: 819.02 ng/ml

Instrument :  
 ECD\_O  
 ClientSampleId :  
 TP-205MSD



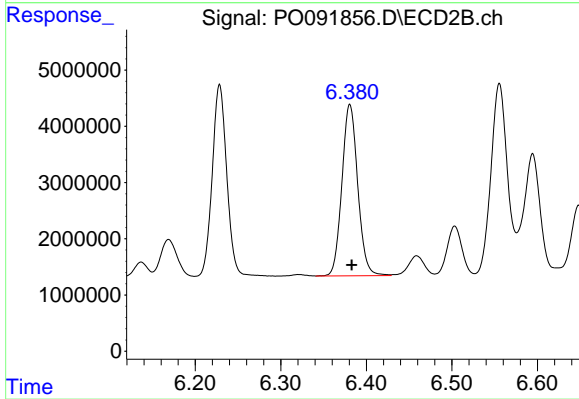
#32 AR-1260-2

R.T.: 6.228 min  
 Delta R.T.: -0.002 min  
 Response: 40205610  
 Conc: 415.25 ng/ml



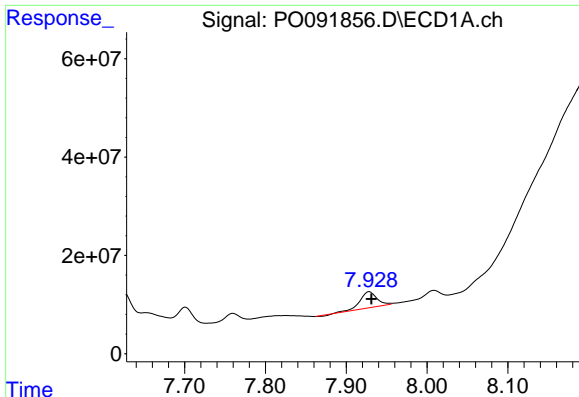
#33 AR-1260-3

R.T.: 7.701 min  
 Delta R.T.: -0.004 min  
 Response: 44648171  
 Conc: 347.62 ng/ml



#33 AR-1260-3

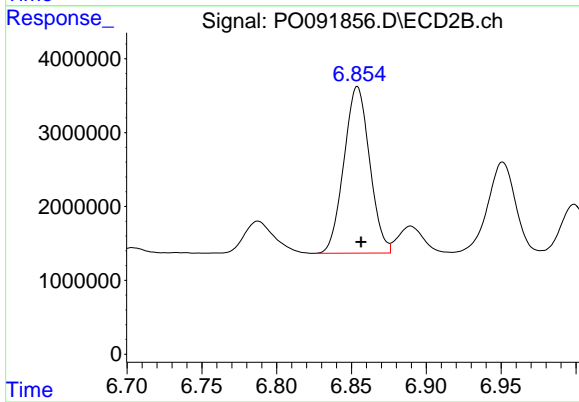
R.T.: 6.381 min  
 Delta R.T.: -0.002 min  
 Response: 39139420  
 Conc: 399.97 ng/ml



#34 AR-1260-4

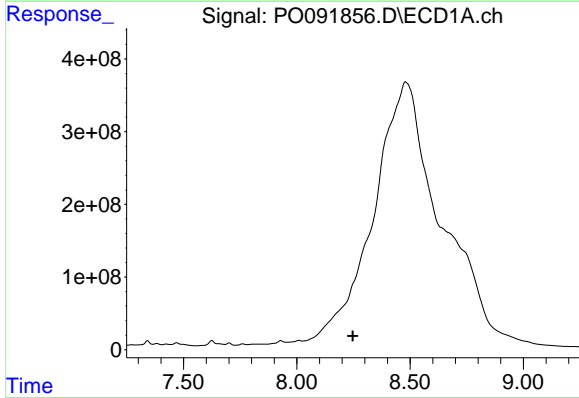
R.T.: 7.928 min  
 Delta R.T.: -0.003 min  
 Response: 45744948  
 Conc: 306.02 ng/ml

Instrument :  
 ECD\_O  
 ClientSampleId :  
 TP-205MSD



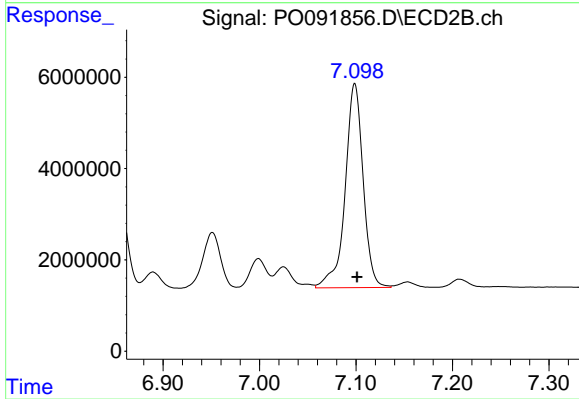
#34 AR-1260-4

R.T.: 6.854 min  
 Delta R.T.: -0.002 min  
 Response: 26955156  
 Conc: 358.34 ng/ml



#35 AR-1260-5

R.T.: 0.000 min  
 Exp R.T. : 8.247 min  
 Response: 0  
 Conc: N.D.



#35 AR-1260-5

R.T.: 7.099 min  
 Delta R.T.: -0.003 min  
 Response: 58094089  
 Conc: 351.69 ng/ml