

Data Path : Z:\pestpcbsrv\HPCHEM1\ECD_O\Data\P0010625\
 Data File : P0108940.D
 Signal(s) : Signal #1: ECD1A.ch Signal #2: ECD2B.ch
 Acq On : 06 Jan 2025 20:47
 Operator : YP/AJ
 Sample : I.BLK
 Misc :
 ALS Vial : 2 Sample Multiplier: 1

Instrument :
 ECD_O
 ClientSampleId :
 I.BLK

Integration File signal 1: autoint1.e
 Integration File signal 2: autoint2.e
 Quant Time: Jan 07 00:18:39 2025
 Quant Method : Z:\pestpcbsrv\HPCHEM1\ECD_O\methods\P0010225.M
 Quant Title : GC EXTRACTABLES
 QLast Update : Fri Jan 03 04:48:29 2025
 Response via : Initial Calibration
 Integrator: ChemStation

Volume Inj. : 2 µl
 Signal #1 Phase : ZB-MR1 Signal #2 Phase: ZB-MR2
 Signal #1 Info : 30Mx0.32mmx 0.50µ Signal #2 Info : 30M x 0.32mm x 0.25µm

Compound	RT#1	RT#2	Resp#1	Resp#2	ng/ml	ng/ml

System Monitoring Compounds						
1) SA Tetrachlo...	3.703	3.700	161.8E6	103.7E6	17.463	18.712
2) SA Decachlor...	8.770	8.721	128.6E6	64770968	18.109	17.259

Target Compounds

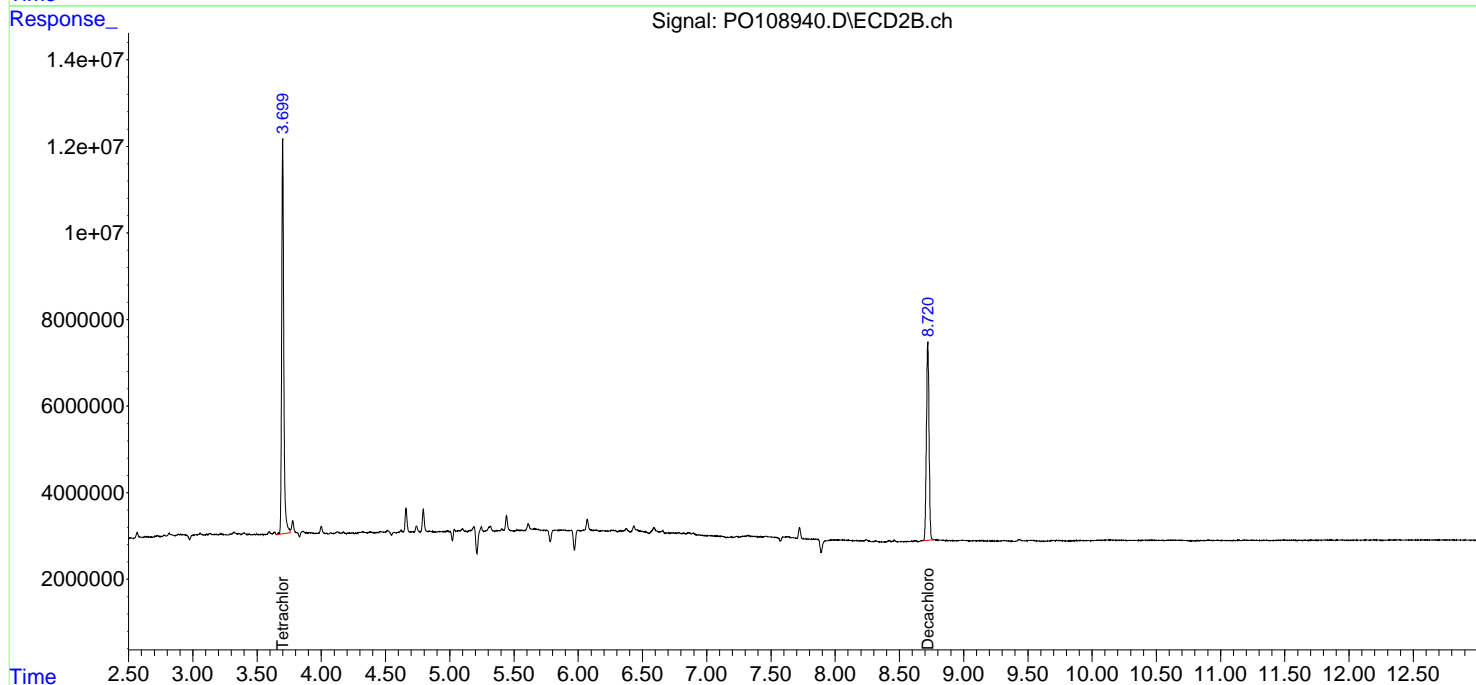
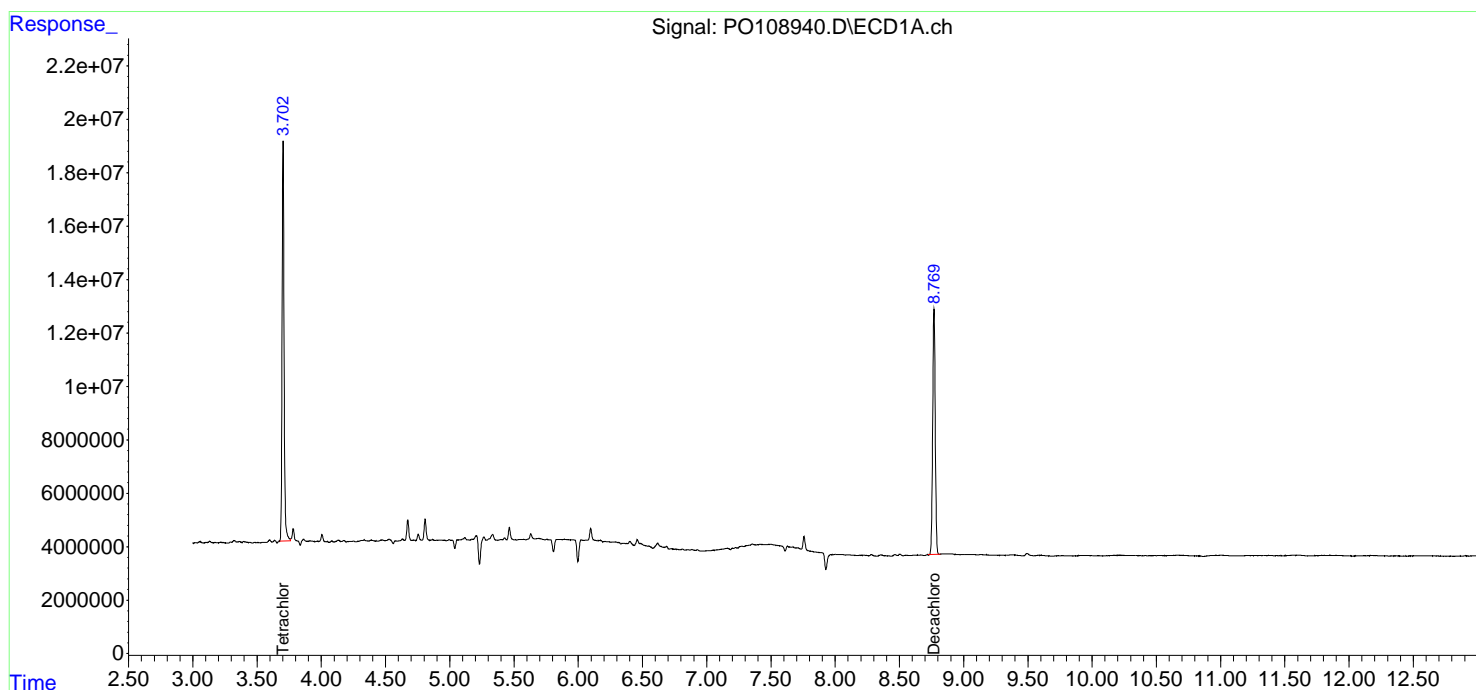
(f)=RT Delta > 1/2 Window (#)=Amounts differ by > 25% (m)=manual int.

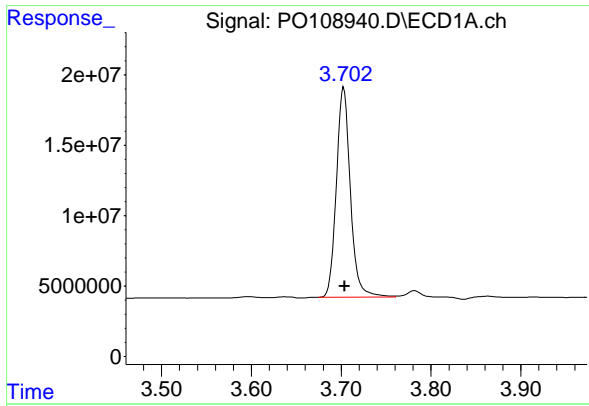
Data Path : Z:\pestpcbsrv\HPCHEM1\ECD_O\Data\PO010625\
 Data File : PO108940.D
 Signal(s) : Signal #1: ECD1A.ch Signal #2: ECD2B.ch
 Acq On : 06 Jan 2025 20:47
 Operator : YP/AJ
 Sample : I.BLK
 Misc :
 ALS Vial : 2 Sample Multiplier: 1

Instrument :
 ECD_O
 ClientSampleId :
 I.BLK

Integration File signal 1: autoint1.e
 Integration File signal 2: autoint2.e
 Quant Time: Jan 07 00:18:39 2025
 Quant Method : Z:\pestpcbsrv\HPCHEM1\ECD_O\methods\PO010225.M
 Quant Title : GC EXTRACTABLES
 QLast Update : Fri Jan 03 04:48:29 2025
 Response via : Initial Calibration
 Integrator: ChemStation

Volume Inj. : 2 µl
 Signal #1 Phase : ZB-MR2 Signal #2 Phase: ZB-MR2
 Signal #1 Info : 30Mx0.32mmx 0.50µ Signal #2 Info : 30M x 0.32mm x 0.25µm

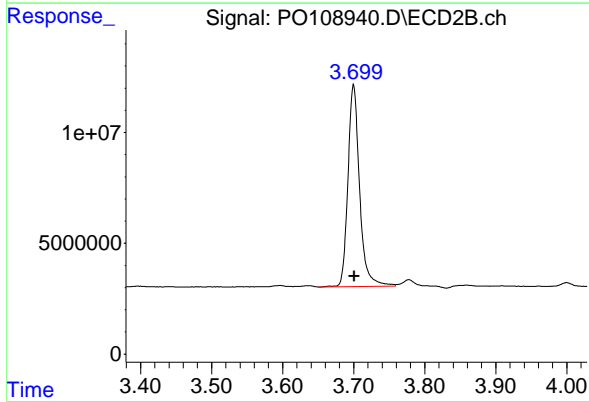




#1 Tetrachloro-m-xylene

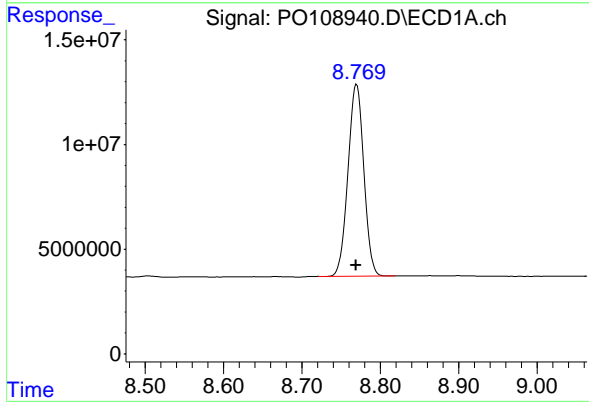
R.T.: 3.703 min
 Delta R.T.: -0.001 min
 Response: 161763745
 Conc: 17.46 ng/ml

Instrument :
 ECD_O
 ClientSampleId :
 I.BLK



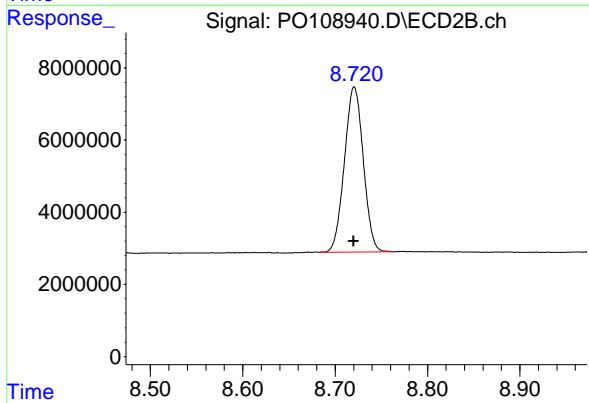
#1 Tetrachloro-m-xylene

R.T.: 3.700 min
 Delta R.T.: -0.001 min
 Response: 103747285
 Conc: 18.71 ng/ml



#2 Decachlorobiphenyl

R.T.: 8.770 min
 Delta R.T.: 0.000 min
 Response: 128567089
 Conc: 18.11 ng/ml



#2 Decachlorobiphenyl

R.T.: 8.721 min
 Delta R.T.: 0.000 min
 Response: 64770968
 Conc: 17.26 ng/ml