

Data Path : Z:\pestpcbsrv\HPCHEM1\ECD_0\Data\P0010719\
 Data File : P0053285.D
 Signal(s) : Signal #1: ECD1A.CH Signal #2: ECD2B.CH
 Acq On : 07 Jan 2019 21:57
 Operator : SM/SJ
 Sample : K1061-01
 Misc :
 ALS Vial : 20 Sample Multiplier: 1

Instrument :
 ECD_0
 ClientSampleId :
 TRE-COMP-1

Integration File signal 1: autoint1.e
 Integration File signal 2: autoint2.e
 Quant Time: Jan 08 00:48:29 2019
 Quant Method : Z:\pestpcbsrv\HPCHEM1\ECD_0\methods\P0010219.M
 Quant Title : GC EXTRACTABLES
 QLast Update : Wed Jan 02 14:46:04 2019
 Response via : Initial Calibration
 Integrator: ChemStation 6890 Scale Mode: Small noise peaks clipped

Volume Inj. : 2 µl
 Signal #1 Phase : ZB-MR1 Signal #2 Phase: ZB-MR2
 Signal #1 Info : 30Mx0.32mmx 0.50µ Signal #2 Info : 30M x 0.32mm x 0.25µm

Compound	RT#1	RT#2	Resp#1	Resp#2	ng/ml	ng/ml

System Monitoring Compounds						
1) SA Tetrachlo...	4.174	3.211	27231957	4548329	20.813	20.270
2) SA Decachlor...	9.633	7.853	11047700	4335148	13.943	16.864
Target Compounds						
3) L1 AR-1016-1	5.371	4.232	972202	184643	25.362	20.482
4) L1 AR-1016-2	5.371	4.232	972202	184643	17.287	13.405
5) L1 AR-1016-3	5.371	4.388	972202	261675	28.852	36.145 #
6) L1 AR-1016-4	5.567	4.426	506483	628843	18.448	115.734 #
7) L1 AR-1016-5	5.849	4.664	3993196	129044	151.458	17.672 #
8) L2 AR-1221-1	4.399	0.000	463900	0	39.017	N.D. #
9) L2 AR-1221-2	4.471	0.000	988697	0	114.470	N.D. #
10) L2 AR-1221-3	4.540	0.000	490483	0	17.545	N.D. #
11) L3 AR-1232-1	4.540	0.000	490483	0	21.572	N.D. #
12) L3 AR-1232-2	5.054	4.232	3725062	184643	328.740	31.097 #
13) L3 AR-1232-3	5.371	4.388	972202	261675	41.749	86.269 #
14) L3 AR-1232-4	5.567	4.451	506483	755821	44.398	285.682 #
15) L3 AR-1232-5	5.567	4.664	506483	129044	71.312	45.286 #
16) L4 AR-1242-1	5.371	4.232	972202	184643	32.258	26.464
17) L4 AR-1242-2	5.371	4.232	972202	184643	21.940	16.972
18) L4 AR-1242-3	5.371	4.388	972202	261675	36.656	45.836 #
19) L4 AR-1242-4	5.567	4.451	506483	755821	23.372	137.594 #
20) L4 AR-1242-5	6.190	4.896	1430447	143331	65.374	18.813 #
21) L5 AR-1248-1	5.371	4.232	972202	184643	42.951	33.046
22) L5 AR-1248-2	5.567	4.426	506483	628843	17.384	83.954 #
23) L5 AR-1248-3	5.849	4.451	3993196	755821	120.288	96.246
24) L5 AR-1248-4	6.190	4.664	1430447	129044	38.290	13.673 #
25) L5 AR-1248-5	6.190	0.000	1430447	0	40.148	N.D. #
26) L6 AR-1254-1	6.190	4.896	1430447	143331	37.324	8.743 #
27) L6 AR-1254-2	6.319	5.108	464607	511390	7.835	36.447 #

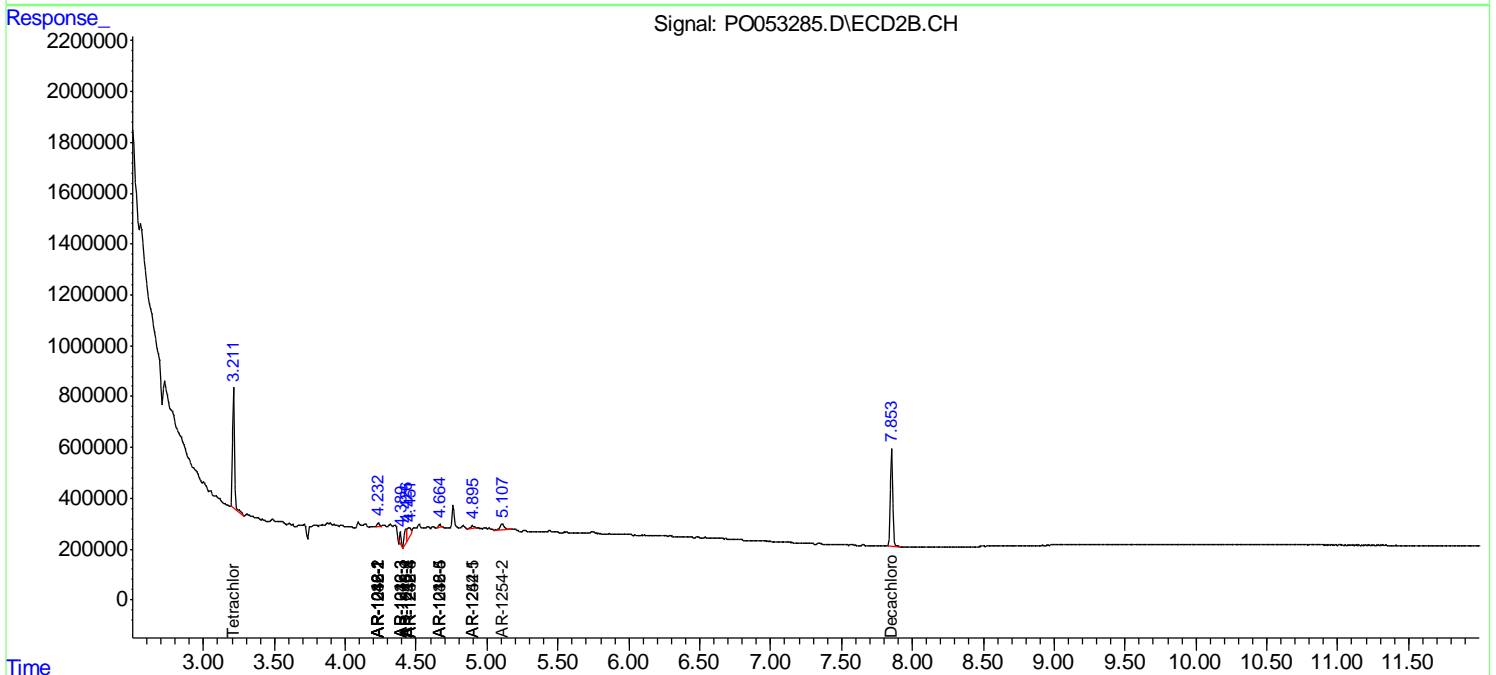
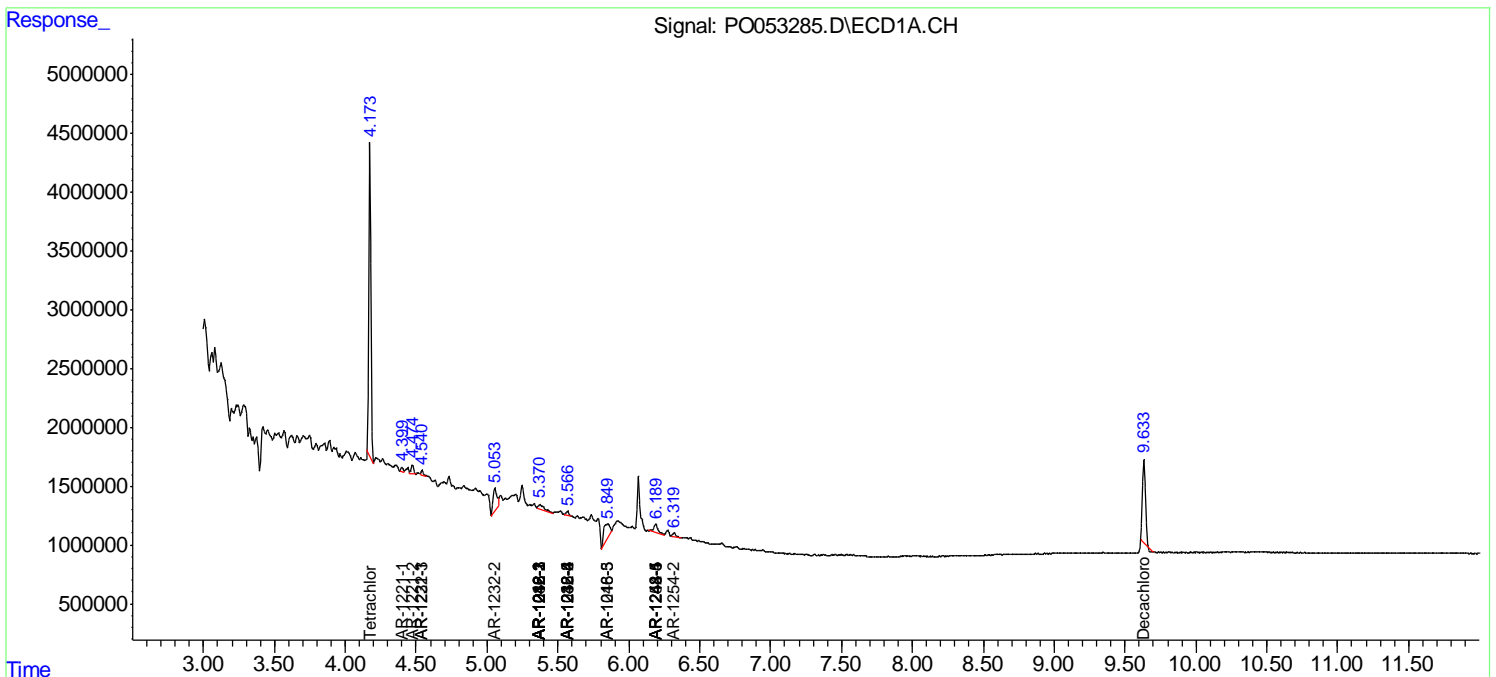
(f)=RT Delta > 1/2 Window (#)=Amounts differ by > 25% (m)=manual int.

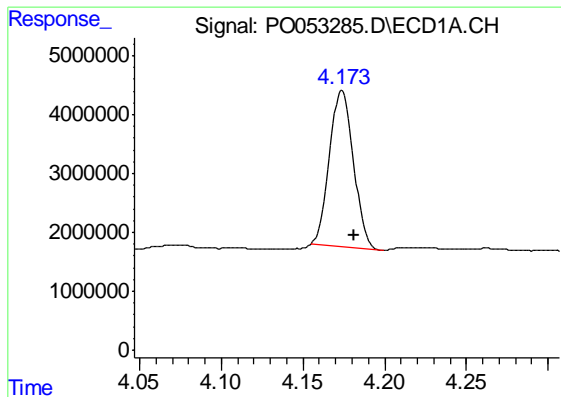
Data Path : Z:\pestpcbsrv\HPCHEM1\ECD_O\Data\PO010719\
 Data File : PO053285.D
 Signal(s) : Signal #1: ECD1A.CH Signal #2: ECD2B.CH
 Acq On : 07 Jan 2019 21:57
 Operator : SM/SJ
 Sample : K1061-01
 Misc :
 ALS Vial : 20 Sample Multiplier: 1

Instrument :
 ECD_O
 ClientSampled :
 TRE-COMP-1

Integration File signal 1: autoint1.e
 Integration File signal 2: autoint2.e
 Quant Time: Jan 08 00:48:29 2019
 Quant Method : Z:\pestpcbsrv\HPCHEM1\ECD_O\methods\PO010219.M
 Quant Title : GC EXTRACTABLES
 QLast Update : Wed Jan 02 14:46:04 2019
 Response via : Initial Calibration
 Integrator: ChemStation 6890 Scale Mode: Small noise peaks clipped

Volume Inj. : 2 µl
 Signal #1 Phase : ZB-MR1 Signal #2 Phase: ZB-MR2
 Signal #1 Info : 30Mx0.32mmx 0.50µ Signal #2 Info : 30M x 0.32mm x 0.25µm

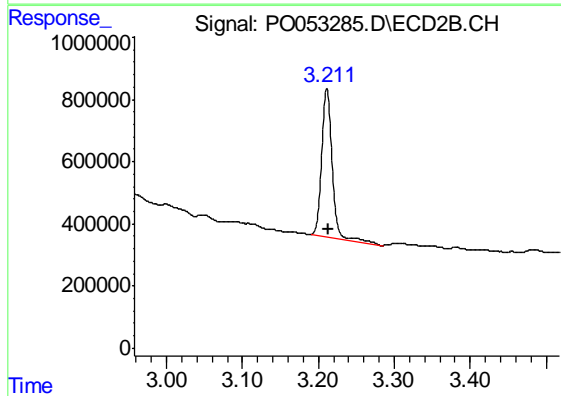




#1 Tetrachloro-m-xylene

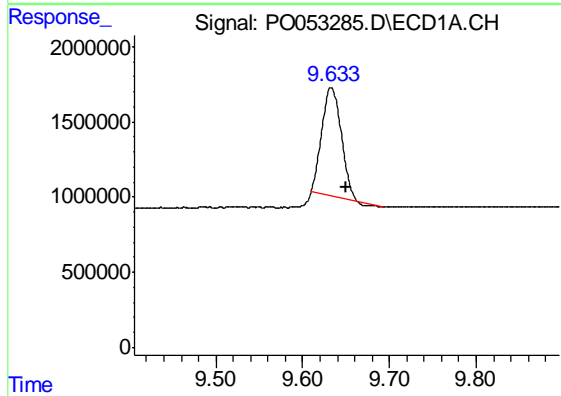
R.T.: 4.174 min
Delta R.T.: -0.007 min
Response: 27231957
Conc: 20.81 ng/ml

Instrument :
ECD_O
ClientSampleId :
TRE-COMP-1



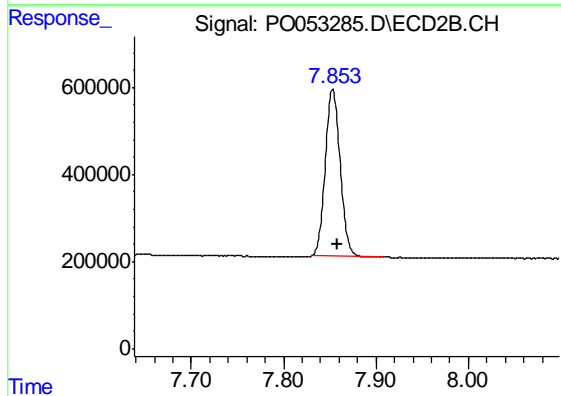
#1 Tetrachloro-m-xylene

R.T.: 3.211 min
Delta R.T.: -0.002 min
Response: 4548329
Conc: 20.27 ng/ml



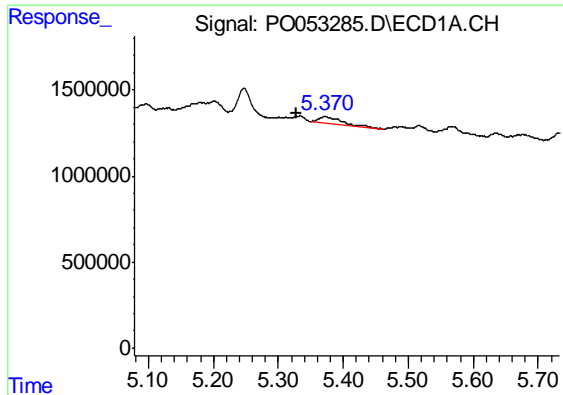
#2 Decachlorobiphenyl

R.T.: 9.633 min
Delta R.T.: -0.018 min
Response: 11047700
Conc: 13.94 ng/ml



#2 Decachlorobiphenyl

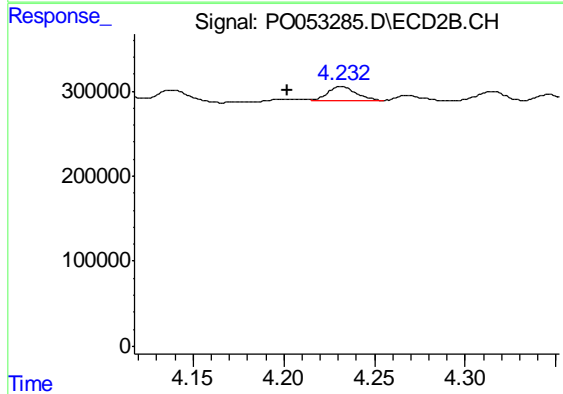
R.T.: 7.853 min
Delta R.T.: -0.006 min
Response: 4335148
Conc: 16.86 ng/ml



#3 AR-1016-1

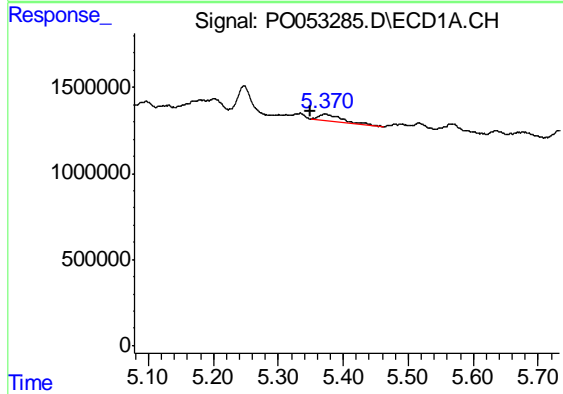
R.T.: 5.371 min
 Delta R.T.: 0.043 min
 Response: 972202
 Conc: 25.36 ng/ml

Instrument :
 ECD_O
 ClientSampleId :
 TRE-COMP-1



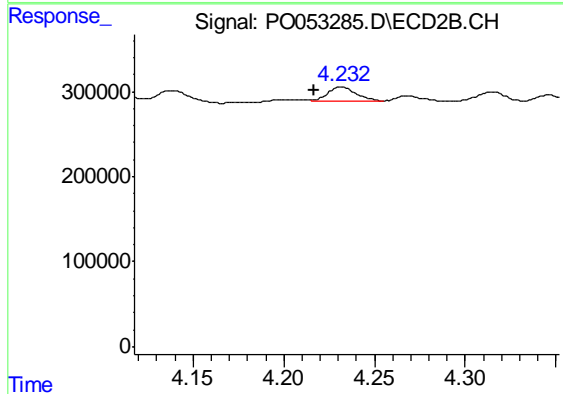
#3 AR-1016-1

R.T.: 4.232 min
 Delta R.T.: 0.030 min
 Response: 184643
 Conc: 20.48 ng/ml



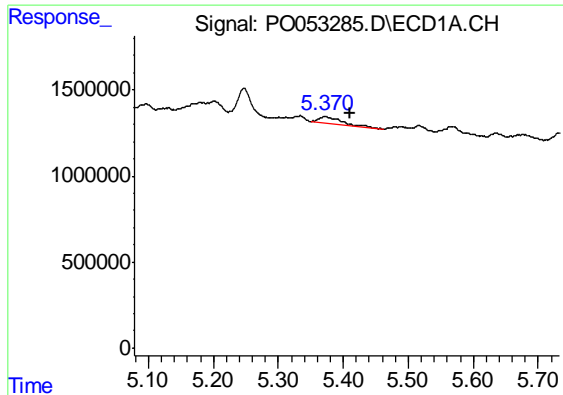
#4 AR-1016-2

R.T.: 5.371 min
 Delta R.T.: 0.021 min
 Response: 972202
 Conc: 17.29 ng/ml



#4 AR-1016-2

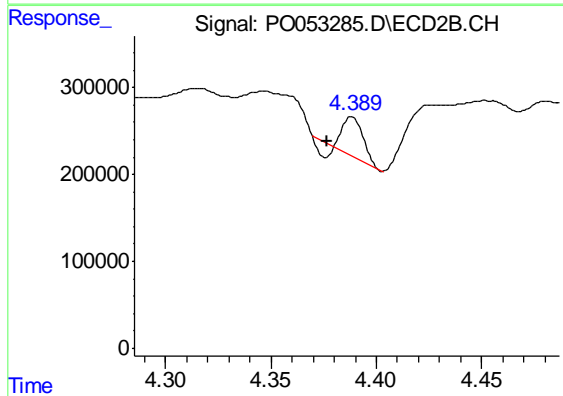
R.T.: 4.232 min
 Delta R.T.: 0.015 min
 Response: 184643
 Conc: 13.40 ng/ml



#5 AR-1016-3

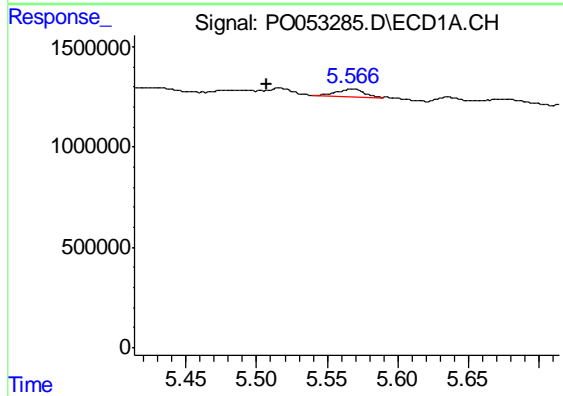
R.T.: 5.371 min
 Delta R.T.: -0.039 min
 Response: 972202
 Conc: 28.85 ng/ml

Instrument :
 ECD_O
 ClientSampleId :
 TRE-COMP-1



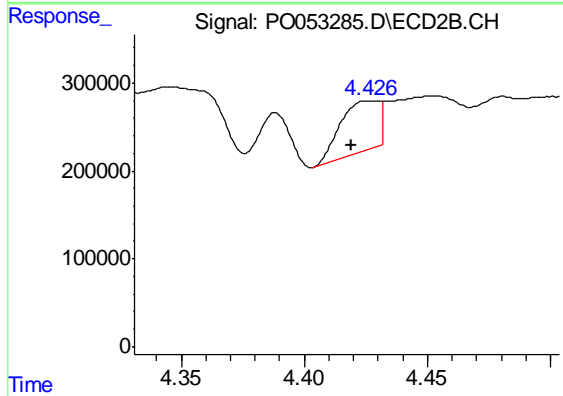
#5 AR-1016-3

R.T.: 4.388 min
 Delta R.T.: 0.012 min
 Response: 261675
 Conc: 36.14 ng/ml



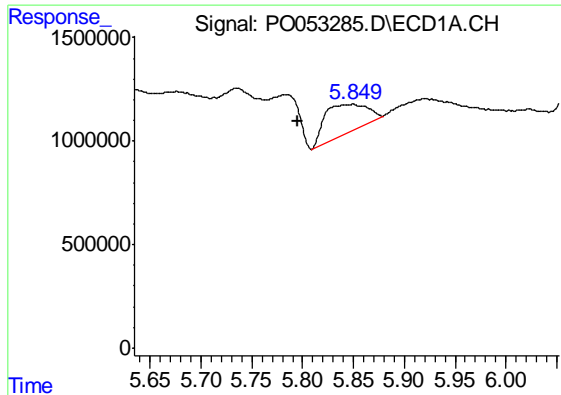
#6 AR-1016-4

R.T.: 5.567 min
 Delta R.T.: 0.059 min
 Response: 506483
 Conc: 18.45 ng/ml



#6 AR-1016-4

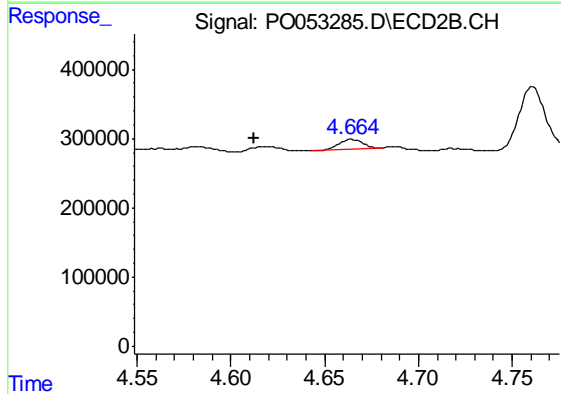
R.T.: 4.426 min
 Delta R.T.: 0.007 min
 Response: 628843
 Conc: 115.73 ng/ml



#7 AR-1016-5

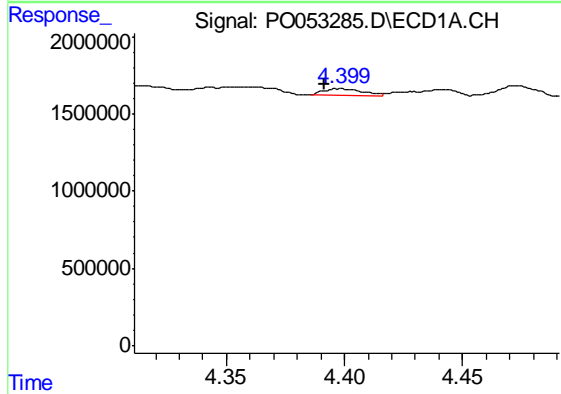
R.T.: 5.849 min
 Delta R.T.: 0.055 min
 Response: 3993196
 Conc: 151.46 ng/ml

Instrument :
 ECD_O
 ClientSampleId :
 TRE-COMP-1



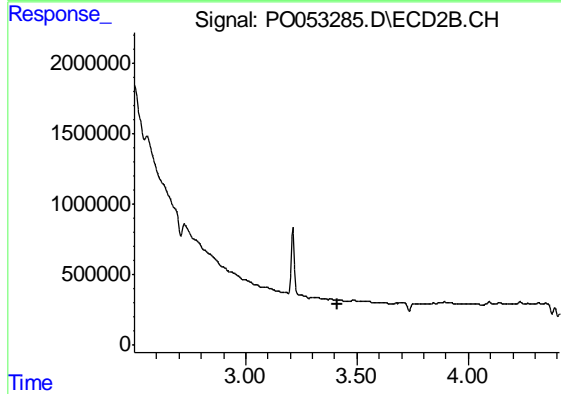
#7 AR-1016-5

R.T.: 4.664 min
 Delta R.T.: 0.052 min
 Response: 129044
 Conc: 17.67 ng/ml



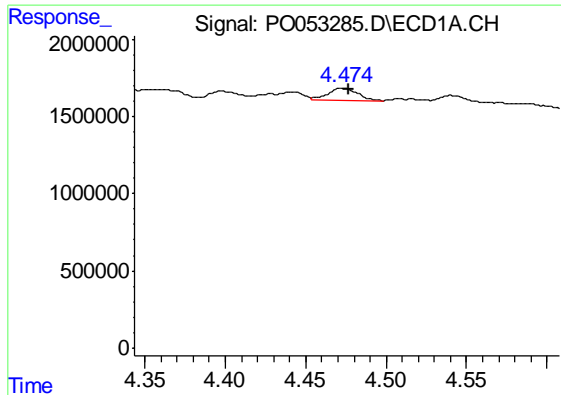
#8 AR-1221-1

R.T.: 4.399 min
 Delta R.T.: 0.007 min
 Response: 463900
 Conc: 39.02 ng/ml



#8 AR-1221-1

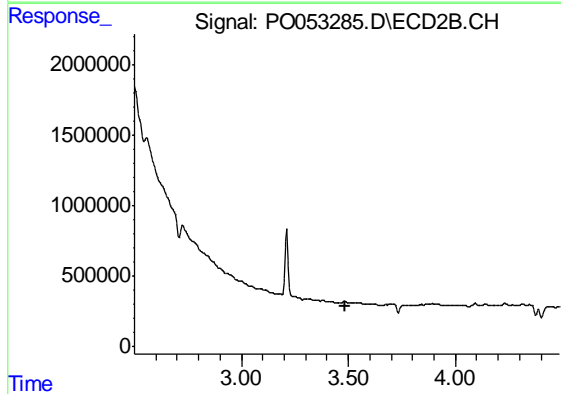
R.T.: 0.000 min
 Exp R.T. : 3.409 min
 Response: 0
 Conc: N.D.



#9 AR-1221-2

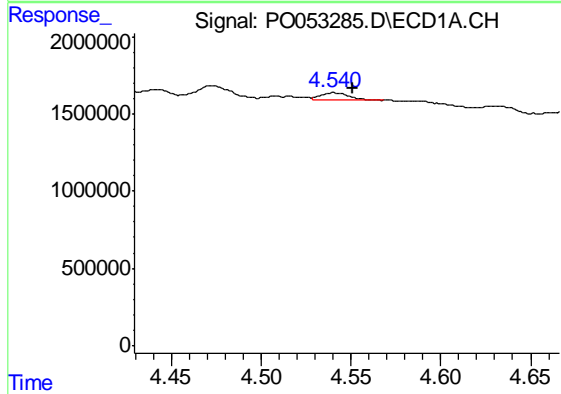
R.T.: 4.471 min
 Delta R.T.: -0.005 min
 Response: 988697
 Conc: 114.47 ng/ml

Instrument :
 ECD_O
 ClientSampled :
 TRE-COMP-1



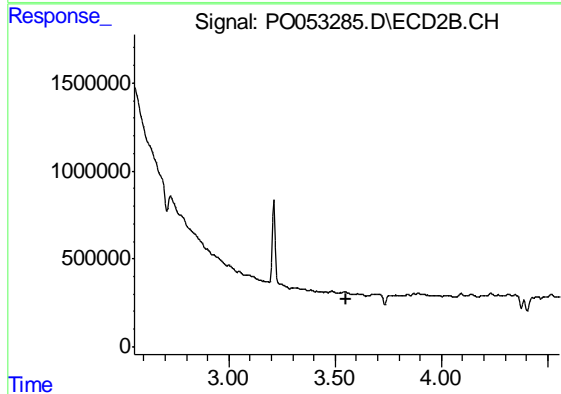
#9 AR-1221-2

R.T.: 0.000 min
 Exp R.T. : 3.487 min
 Response: 0
 Conc: N.D.



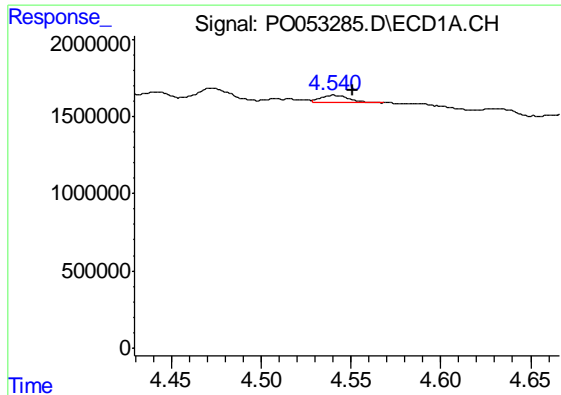
#10 AR-1221-3

R.T.: 4.540 min
 Delta R.T.: -0.011 min
 Response: 490483
 Conc: 17.55 ng/ml



#10 AR-1221-3

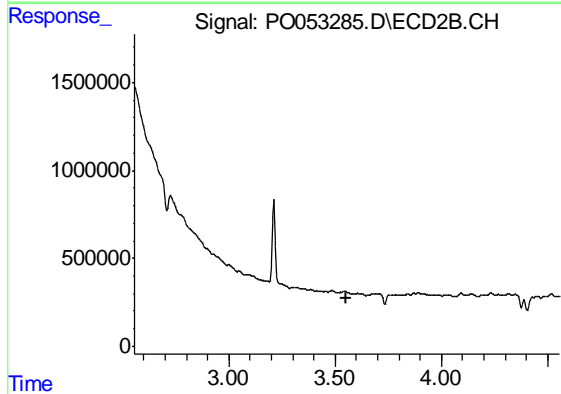
R.T.: 0.000 min
 Exp R.T. : 3.555 min
 Response: 0
 Conc: N.D.



#11 AR-1232-1

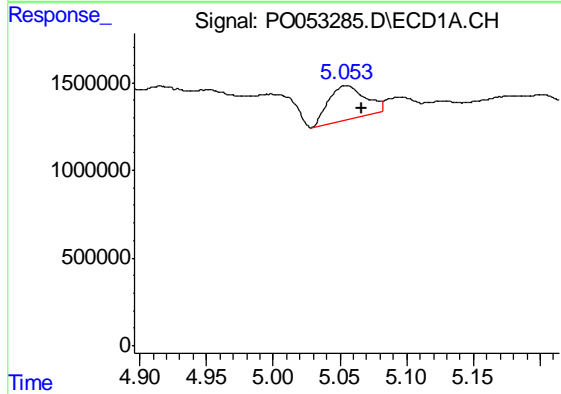
R.T.: 4.540 min
 Delta R.T.: -0.011 min
 Response: 490483
 Conc: 21.57 ng/ml

Instrument :
 ECD_O
 ClientSampled :
 TRE-COMP-1



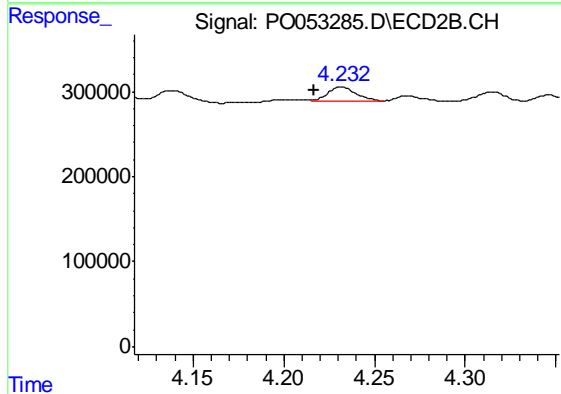
#11 AR-1232-1

R.T.: 0.000 min
 Exp R.T. : 3.555 min
 Response: 0
 Conc: N.D.



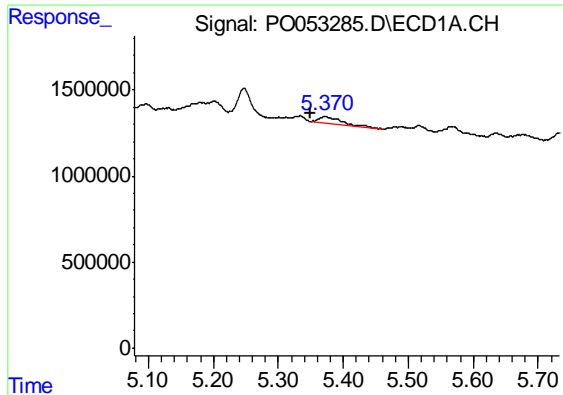
#12 AR-1232-2

R.T.: 5.054 min
 Delta R.T.: -0.012 min
 Response: 3725062
 Conc: 328.74 ng/ml



#12 AR-1232-2

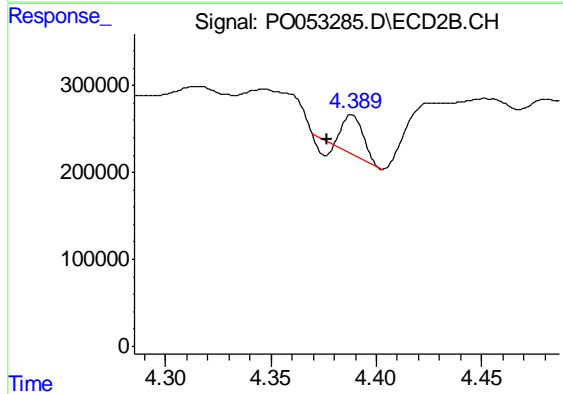
R.T.: 4.232 min
 Delta R.T.: 0.015 min
 Response: 184643
 Conc: 31.10 ng/ml



#13 AR-1232-3

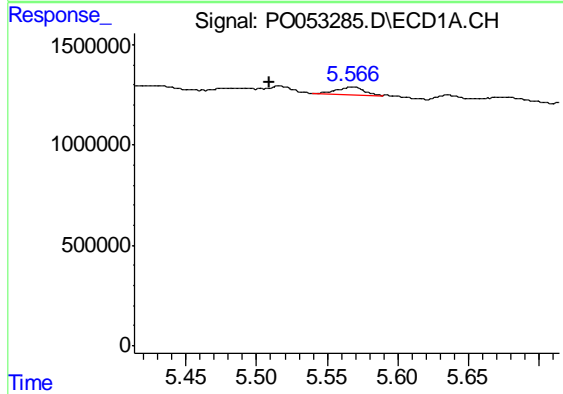
R.T.: 5.371 min
 Delta R.T.: 0.020 min
 Response: 972202
 Conc: 41.75 ng/ml

Instrument :
 ECD_O
 ClientSampleId :
 TRE-COMP-1



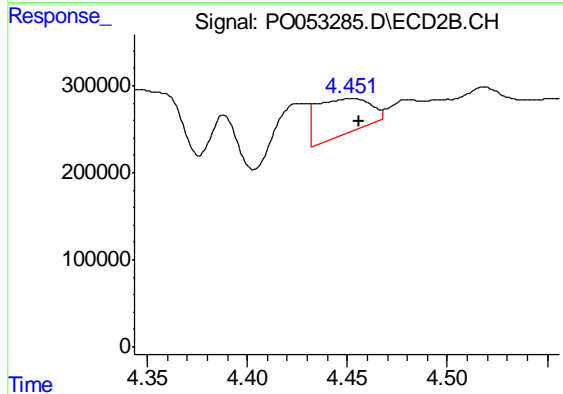
#13 AR-1232-3

R.T.: 4.388 min
 Delta R.T.: 0.012 min
 Response: 261675
 Conc: 86.27 ng/ml



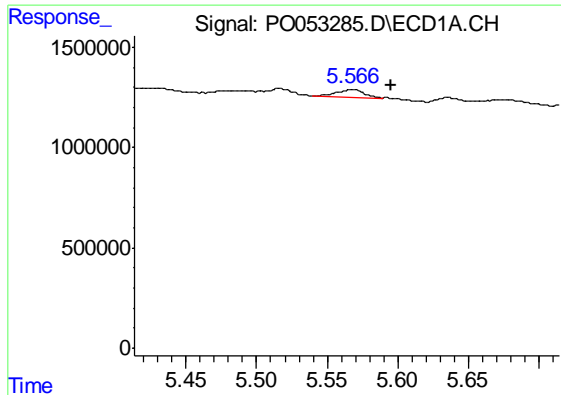
#14 AR-1232-4

R.T.: 5.567 min
 Delta R.T.: 0.057 min
 Response: 506483
 Conc: 44.40 ng/ml



#14 AR-1232-4

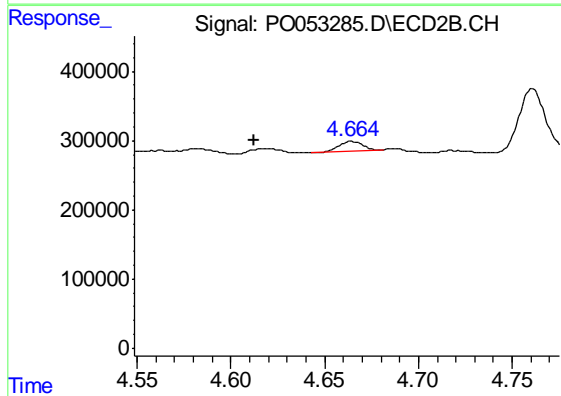
R.T.: 4.451 min
 Delta R.T.: -0.005 min
 Response: 755821
 Conc: 285.68 ng/ml



#15 AR-1232-5

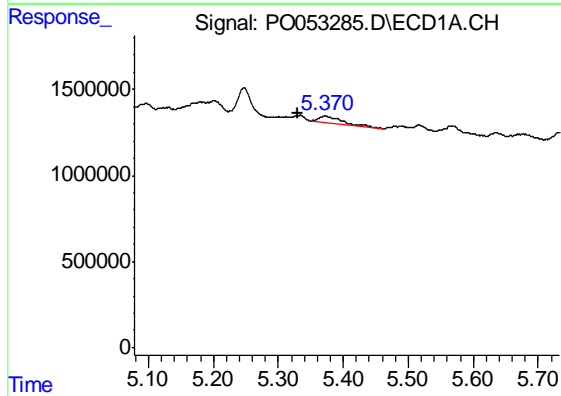
R.T.: 5.567 min
Delta R.T.: -0.029 min
Response: 506483
Conc: 71.31 ng/ml

Instrument :
ECD_O
ClientSampleId :
TRE-COMP-1



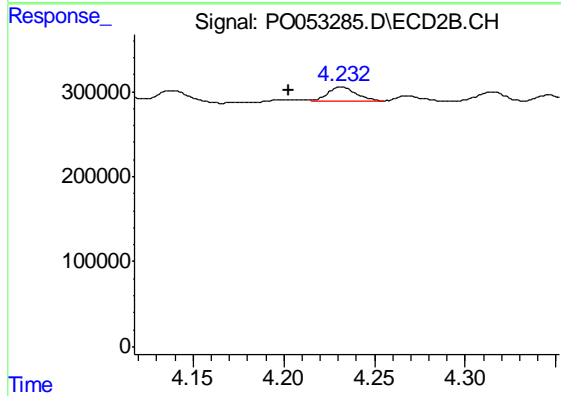
#15 AR-1232-5

R.T.: 4.664 min
Delta R.T.: 0.052 min
Response: 129044
Conc: 45.29 ng/ml



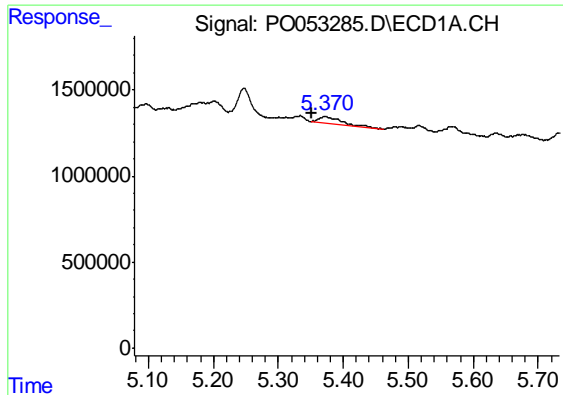
#16 AR-1242-1

R.T.: 5.371 min
Delta R.T.: 0.042 min
Response: 972202
Conc: 32.26 ng/ml



#16 AR-1242-1

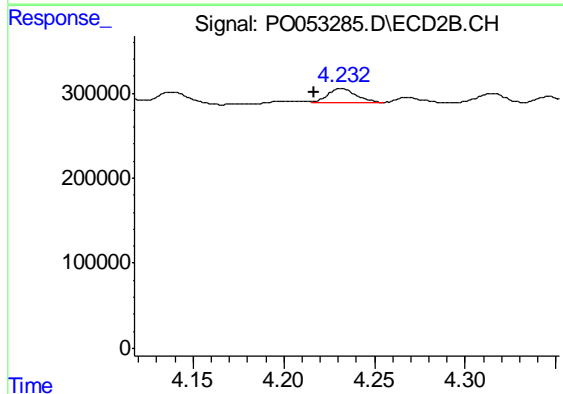
R.T.: 4.232 min
Delta R.T.: 0.029 min
Response: 184643
Conc: 26.46 ng/ml



#17 AR-1242-2

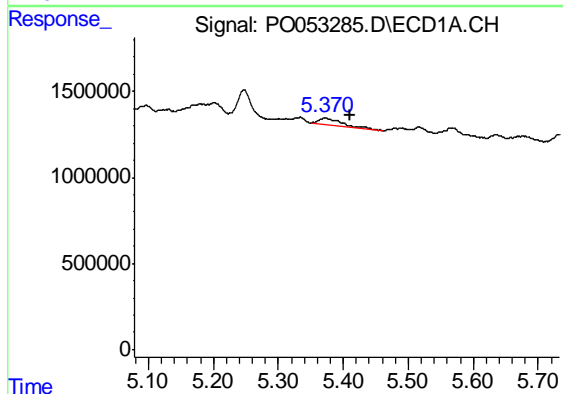
R.T.: 5.371 min
 Delta R.T.: 0.020 min
 Response: 972202
 Conc: 21.94 ng/ml

Instrument :
 ECD_O
 ClientSampleId :
 TRE-COMP-1



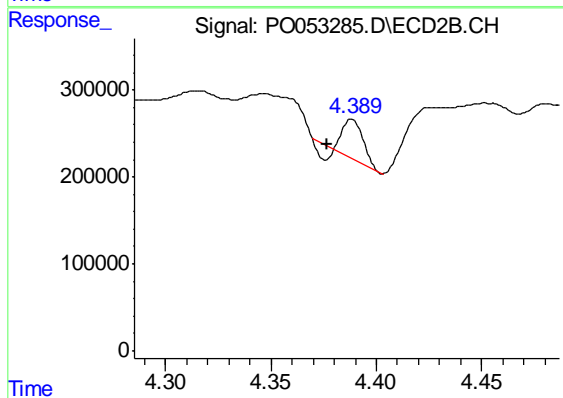
#17 AR-1242-2

R.T.: 4.232 min
 Delta R.T.: 0.015 min
 Response: 184643
 Conc: 16.97 ng/ml



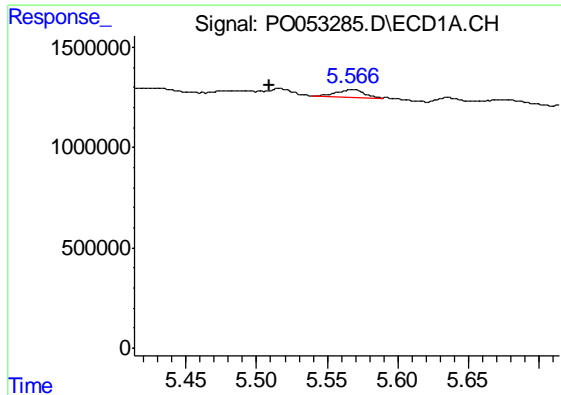
#18 AR-1242-3

R.T.: 5.371 min
 Delta R.T.: -0.040 min
 Response: 972202
 Conc: 36.66 ng/ml



#18 AR-1242-3

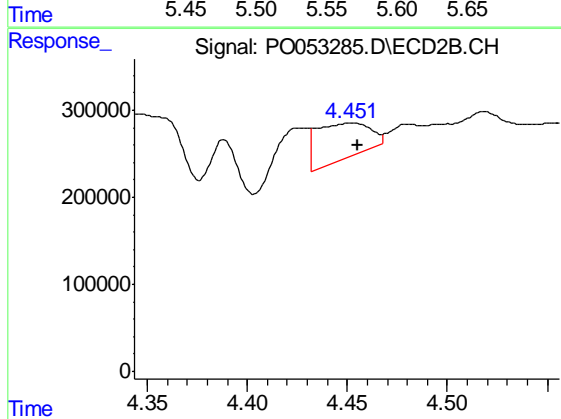
R.T.: 4.388 min
 Delta R.T.: 0.012 min
 Response: 261675
 Conc: 45.84 ng/ml



#19 AR-1242-4

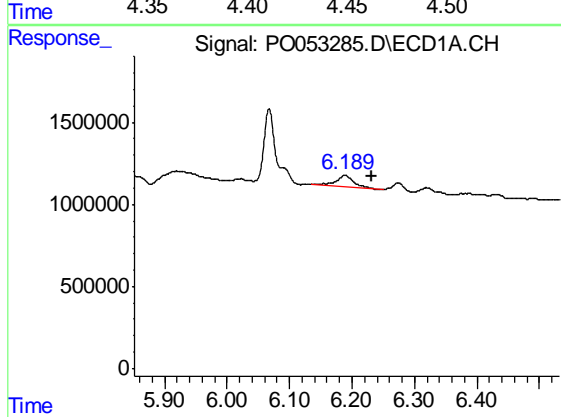
R.T.: 5.567 min
 Delta R.T.: 0.057 min
 Response: 506483
 Conc: 23.37 ng/ml

Instrument :
 ECD_O
 ClientSampleId :
 TRE-COMP-1



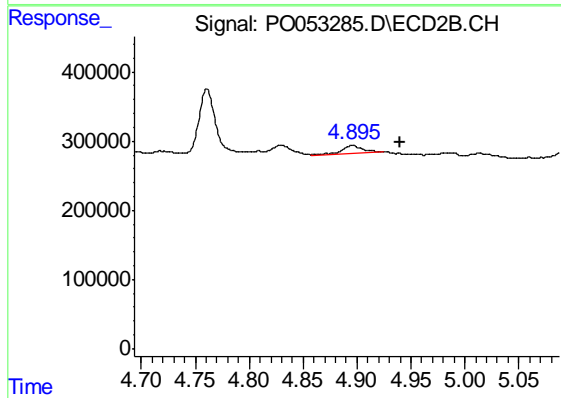
#19 AR-1242-4

R.T.: 4.451 min
 Delta R.T.: -0.004 min
 Response: 755821
 Conc: 137.59 ng/ml



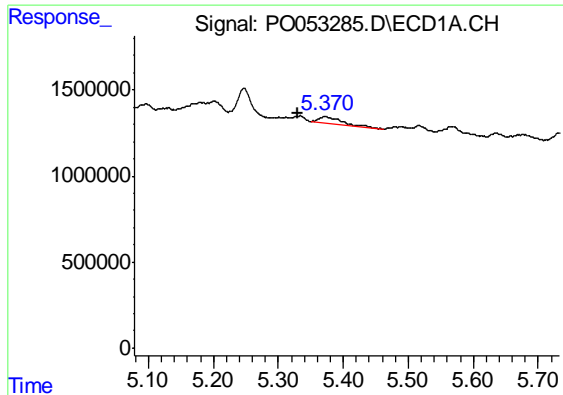
#20 AR-1242-5

R.T.: 6.190 min
 Delta R.T.: -0.041 min
 Response: 1430447
 Conc: 65.37 ng/ml



#20 AR-1242-5

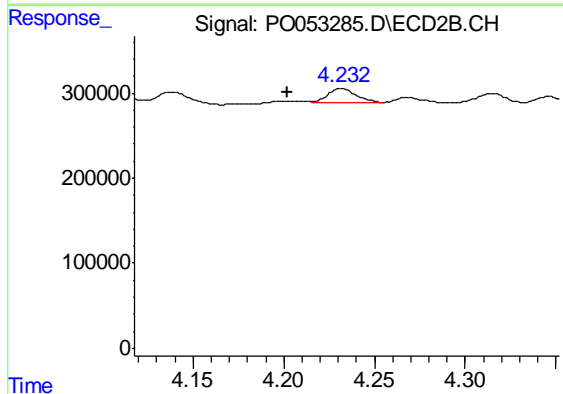
R.T.: 4.896 min
 Delta R.T.: -0.044 min
 Response: 143331
 Conc: 18.81 ng/ml



#21 AR-1248-1

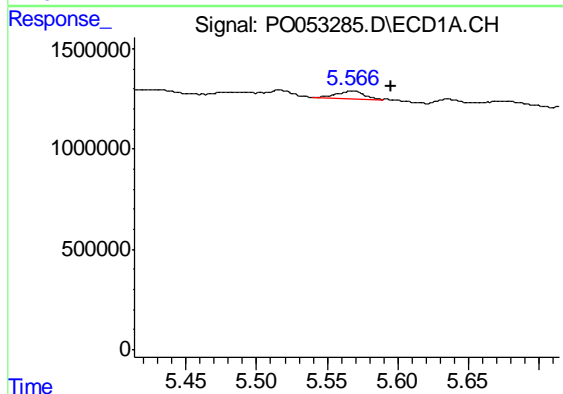
R.T.: 5.371 min
 Delta R.T.: 0.042 min
 Response: 972202
 Conc: 42.95 ng/ml

Instrument :
 ECD_O
 ClientSampleId :
 TRE-COMP-1



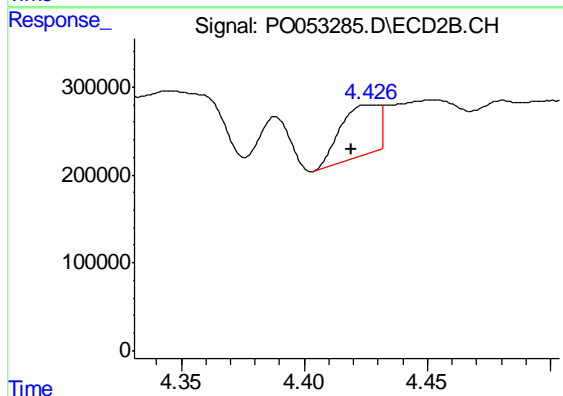
#21 AR-1248-1

R.T.: 4.232 min
 Delta R.T.: 0.030 min
 Response: 184643
 Conc: 33.05 ng/ml



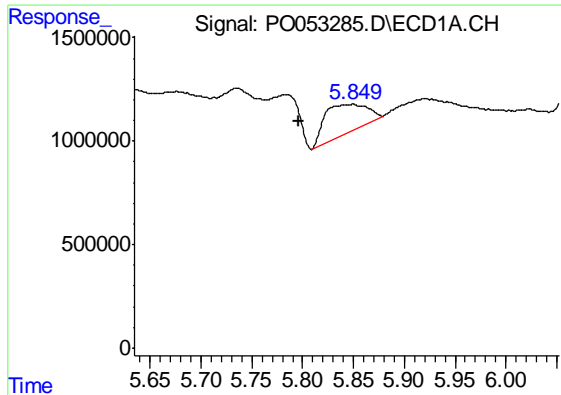
#22 AR-1248-2

R.T.: 5.567 min
 Delta R.T.: -0.029 min
 Response: 506483
 Conc: 17.38 ng/ml



#22 AR-1248-2

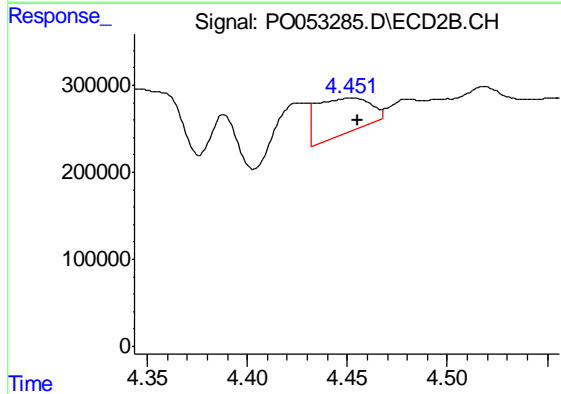
R.T.: 4.426 min
 Delta R.T.: 0.007 min
 Response: 628843
 Conc: 83.95 ng/ml



#23 AR-1248-3

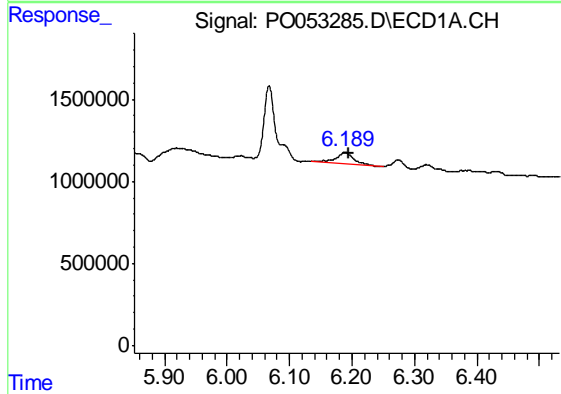
R.T.: 5.849 min
 Delta R.T.: 0.053 min
 Response: 3993196
 Conc: 120.29 ng/ml

Instrument :
 ECD_O
 ClientSampleId :
 TRE-COMP-1



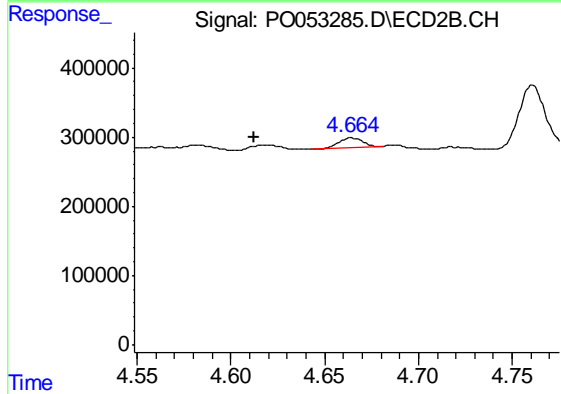
#23 AR-1248-3

R.T.: 4.451 min
 Delta R.T.: -0.004 min
 Response: 755821
 Conc: 96.25 ng/ml



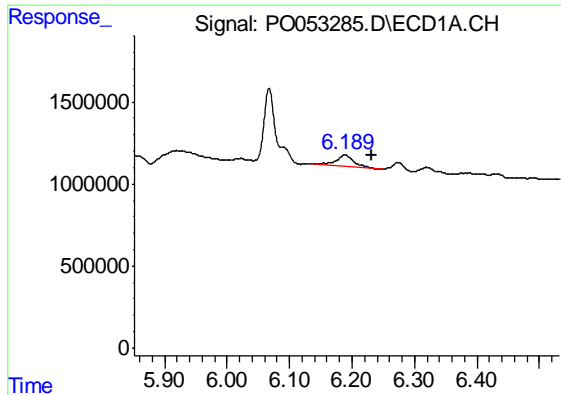
#24 AR-1248-4

R.T.: 6.190 min
 Delta R.T.: -0.005 min
 Response: 1430447
 Conc: 38.29 ng/ml



#24 AR-1248-4

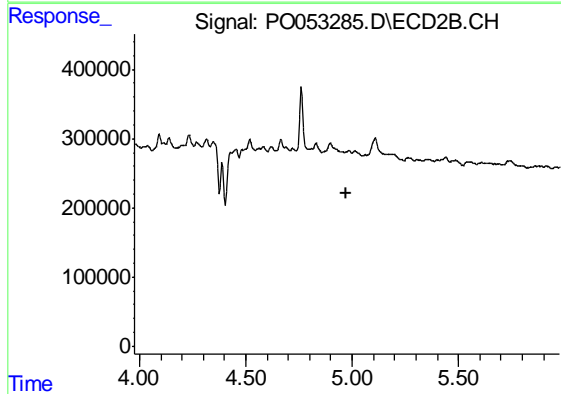
R.T.: 4.664 min
 Delta R.T.: 0.052 min
 Response: 129044
 Conc: 13.67 ng/ml



#25 AR-1248-5

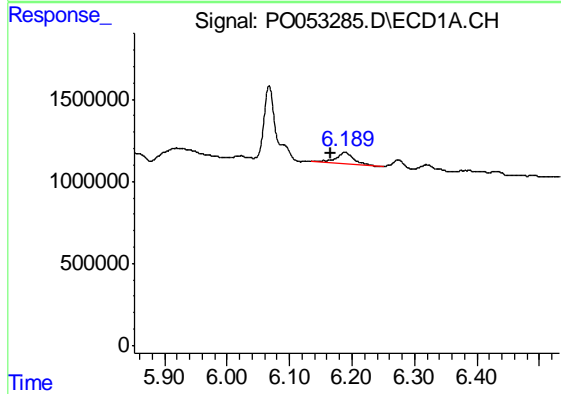
R.T.: 6.190 min
 Delta R.T.: -0.042 min
 Response: 1430447
 Conc: 40.15 ng/ml

Instrument :
 ECD_O
 ClientSampled :
 TRE-COMP-1



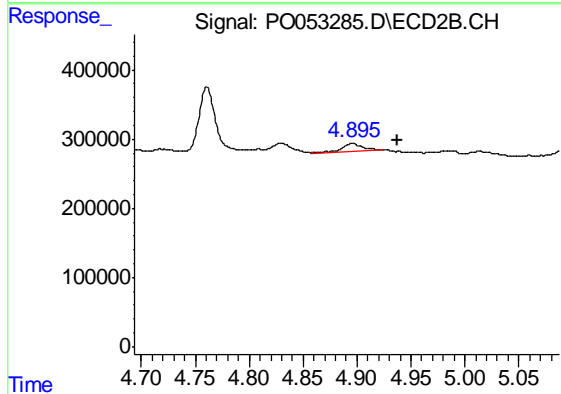
#25 AR-1248-5

R.T.: 0.000 min
 Exp R.T. : 4.975 min
 Response: 0
 Conc: N.D.



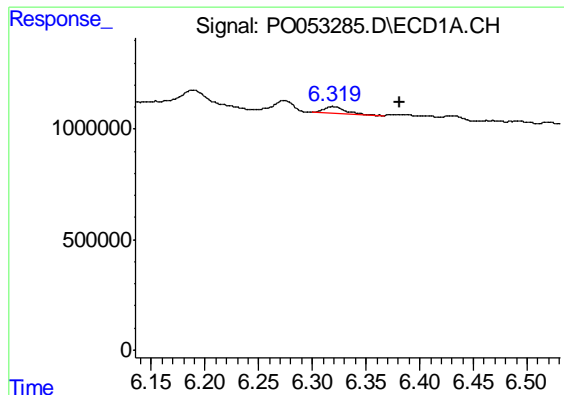
#26 AR-1254-1

R.T.: 6.190 min
 Delta R.T.: 0.024 min
 Response: 1430447
 Conc: 37.32 ng/ml



#26 AR-1254-1

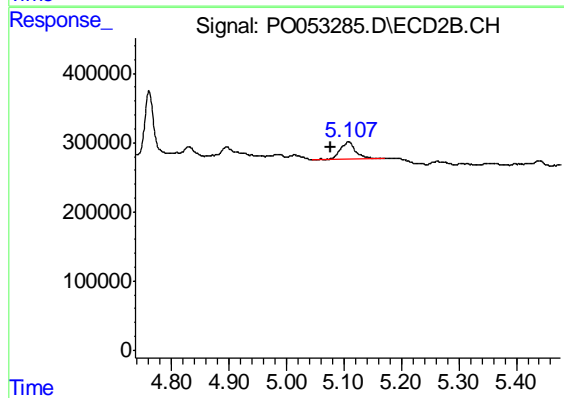
R.T.: 4.896 min
 Delta R.T.: -0.042 min
 Response: 143331
 Conc: 8.74 ng/ml



#27 AR-1254-2

R.T.: 6.319 min
Delta R.T.: -0.062 min
Response: 464607
Conc: 7.83 ng/ml

Instrument :
ECD_O
ClientSampleId :
TRE-COMP-1



#27 AR-1254-2

R.T.: 5.108 min
Delta R.T.: 0.030 min
Response: 511390
Conc: 36.45 ng/ml