

Data Path : Z:\pestpcbsrv\HPCHEM1\ECD_0\Data\P0010721\
 Data File : P0074423.D
 Signal(s) : Signal #1: ECD1A.CH Signal #2: ECD2B.CH
 Acq On : 07 Jan 2021 13:40
 Operator : DD\AJ
 Sample : PB133964BL
 Misc :
 ALS Vial : 14 Sample Multiplier: 1

Instrument :
 ECD_0
 ClientSampleId :

Integration File signal 1: autoint1.e
 Integration File signal 2: autoint2.e
 Quant Time: Jan 07 16:25:14 2021
 Quant Method : Z:\pestpcbsrv\HPCHEM1\ECD_0\methods\P0010421.M
 Quant Title : GC EXTRACTABLES
 QLast Update : Tue Jan 05 05:03:05 2021
 Response via : Initial Calibration
 Integrator: ChemStation 6890 Scale Mode: Small noise peaks clipped

Volume Inj. : 2 µl
 Signal #1 Phase : ZB-MR1 Signal #2 Phase: ZB-MR2
 Signal #1 Info : 30Mx0.32mmx 0.50µ Signal #2 Info : 30M x 0.32mm x 0.25µm

Compound	RT#1	RT#2	Resp#1	Resp#2	ng/ml	ng/ml

System Monitoring Compounds						
1) SA Tetrachlo...	4.932	3.990	2145965	1237011	22.334	23.222
2) SA Decachlor...	10.952	9.245	2065614	1042186	22.219	20.020
Target Compounds						
9) L2 AR-1221-2	0.000	4.338	0	16742	N.D.	32.687 #
39) L8 AR-1262-4	9.526f	0.000	184640	0	25.533	N.D. #
42) L9 AR-1268-2	9.526f	0.000	184640	0	11.973	N.D. #
43) L9 AR-1268-3	9.775	0.000	232605	0	16.929	N.D. #

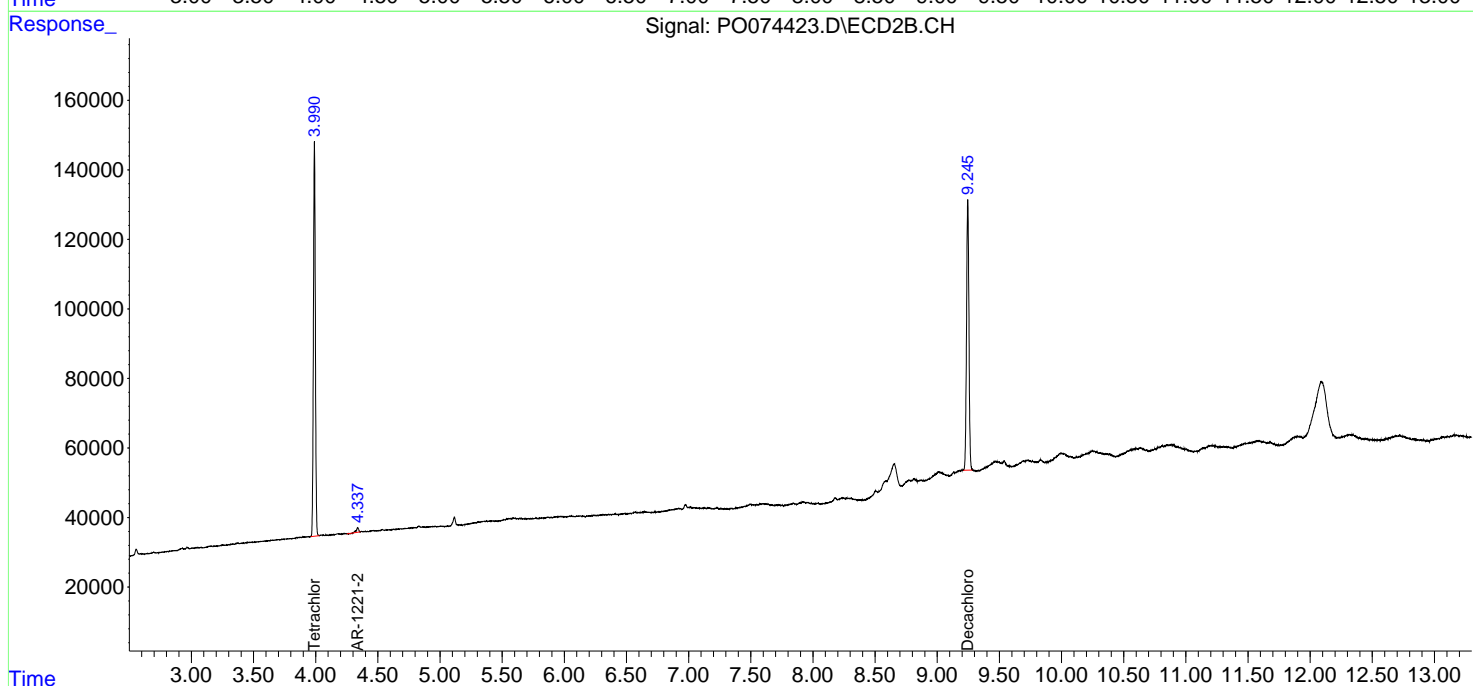
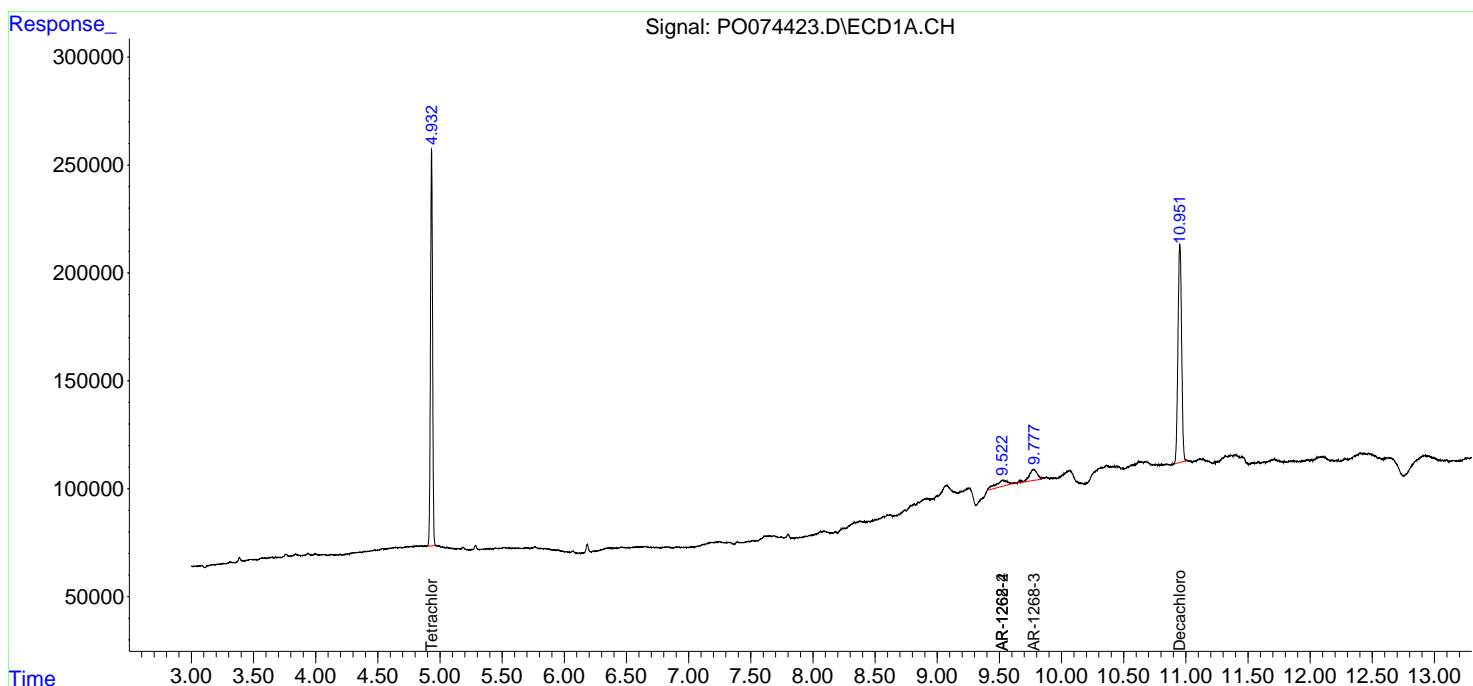
(f)=RT Delta > 1/2 Window (#)=Amounts differ by > 25% (m)=manual int.

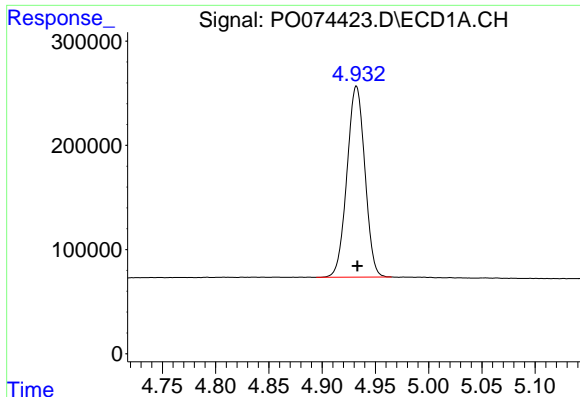
Data Path : Z:\pestpcbsrv\HPCHEM1\ECD_O\Data\PO010721\
 Data File : PO074423.D
 Signal(s) : Signal #1: ECD1A.CH Signal #2: ECD2B.CH
 Acq On : 07 Jan 2021 13:40
 Operator : DD\AJ
 Sample : PB133964BL
 Misc :
 ALS Vial : 14 Sample Multiplier: 1

Instrument :
 ECD_O
 ClientSampled :

Integration File signal 1: autoint1.e
 Integration File signal 2: autoint2.e
 Quant Time: Jan 07 16:25:14 2021
 Quant Method : Z:\pestpcbsrv\HPCHEM1\ECD_O\methods\PO010421.M
 Quant Title : GC EXTRACTABLES
 QLast Update : Tue Jan 05 05:03:05 2021
 Response via : Initial Calibration
 Integrator: ChemStation 6890 Scale Mode: Small noise peaks clipped

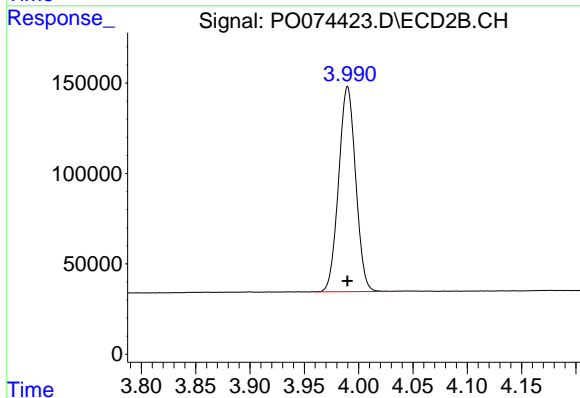
Volume Inj. : 2 µl
 Signal #1 Phase : ZB-MR1 Signal #2 Phase: ZB-MR2
 Signal #1 Info : 30Mx0.32mmx 0.50µ Signal #2 Info : 30M x 0.32mm x 0.25µm



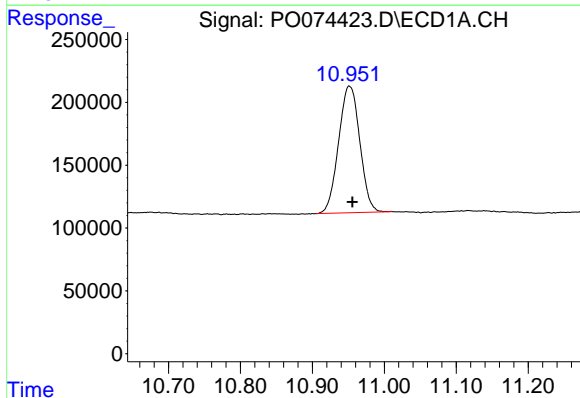


#1 Tetrachloro-m-xylene
 R.T.: 4.932 min
 Delta R.T.: 0.000 min
 Response: 2145965
 Conc: 22.33 ng/ml

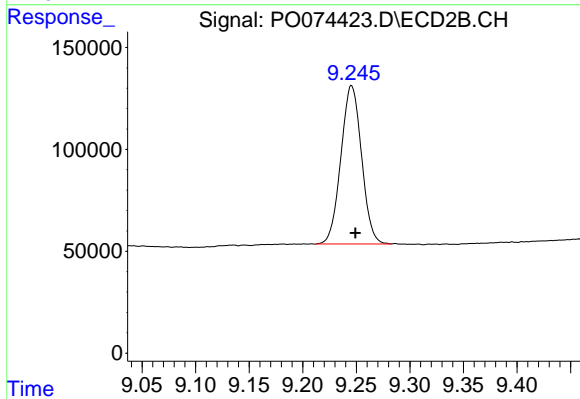
Instrument :
 ECD_O
 ClientSampled :



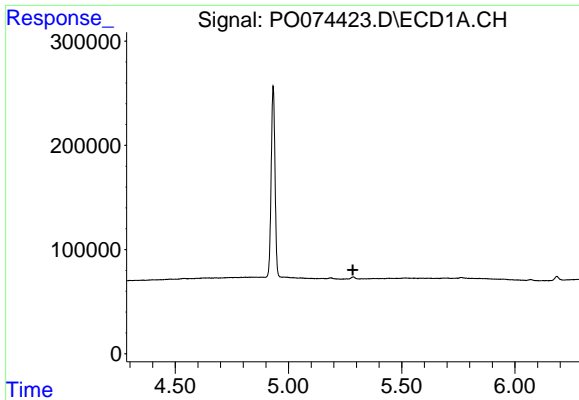
#1 Tetrachloro-m-xylene
 R.T.: 3.990 min
 Delta R.T.: 0.000 min
 Response: 1237011
 Conc: 23.22 ng/ml



#2 Decachlorobiphenyl
 R.T.: 10.952 min
 Delta R.T.: -0.004 min
 Response: 2065614
 Conc: 22.22 ng/ml



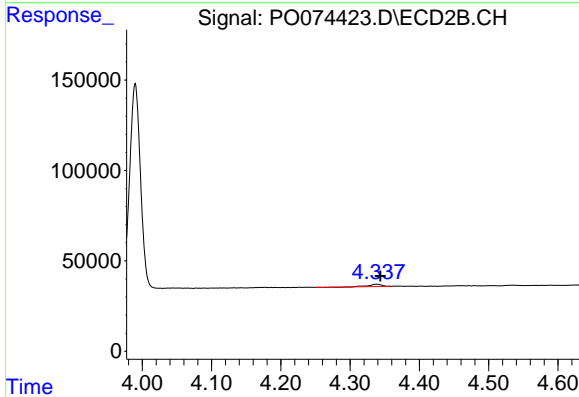
#2 Decachlorobiphenyl
 R.T.: 9.245 min
 Delta R.T.: -0.004 min
 Response: 1042186
 Conc: 20.02 ng/ml



#9 AR-1221-2

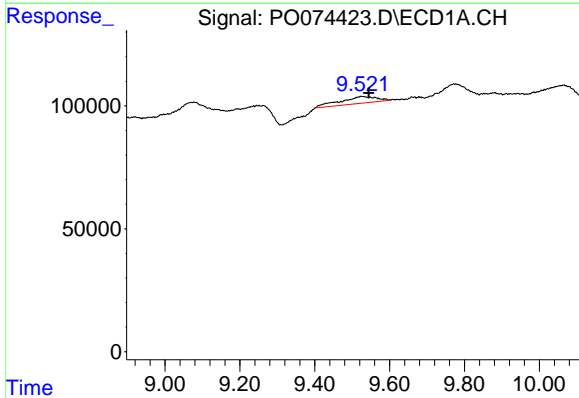
R.T.: 0.000 min
 Exp R.T.: 5.285 min
 Response: 0
 Conc: N.D.

Instrument :
 ECD_O
 ClientSampled :



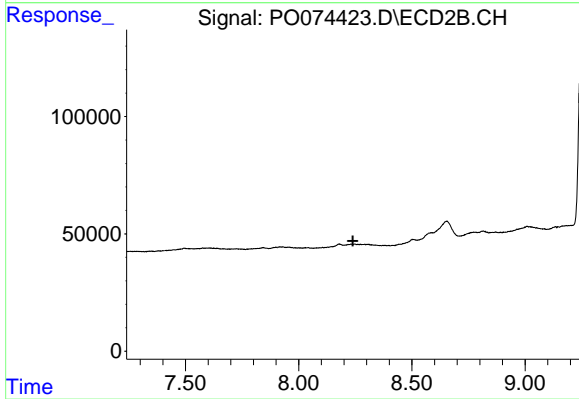
#9 AR-1221-2

R.T.: 4.338 min
 Delta R.T.: -0.006 min
 Response: 16742
 Conc: 32.69 ng/ml



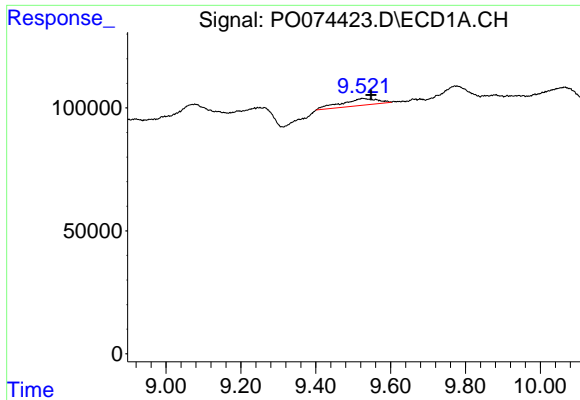
#39 AR-1262-4

R.T.: 9.526 min
 Delta R.T.: -0.019 min
 Response: 184640
 Conc: 25.53 ng/ml



#39 AR-1262-4

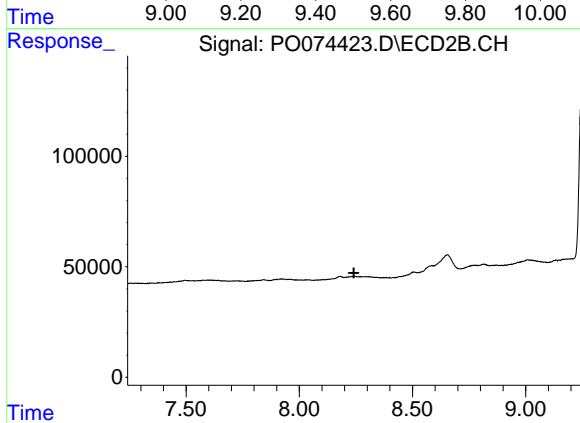
R.T.: 0.000 min
 Exp R.T.: 8.239 min
 Response: 0
 Conc: N.D.



#42 AR-1268-2

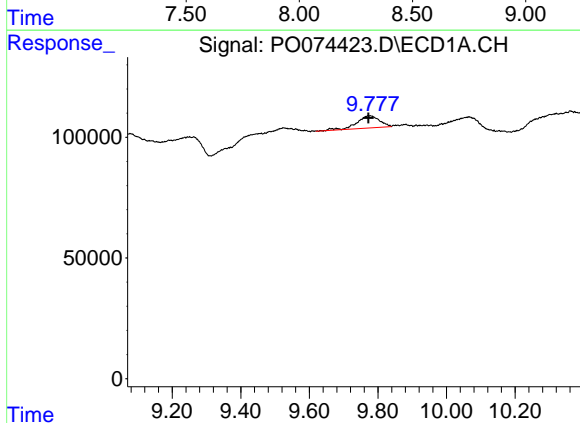
R.T.: 9.526 min
 Delta R.T.: -0.022 min
 Response: 184640
 Conc: 11.97 ng/ml

Instrument :
 ECD_O
 ClientSampled :



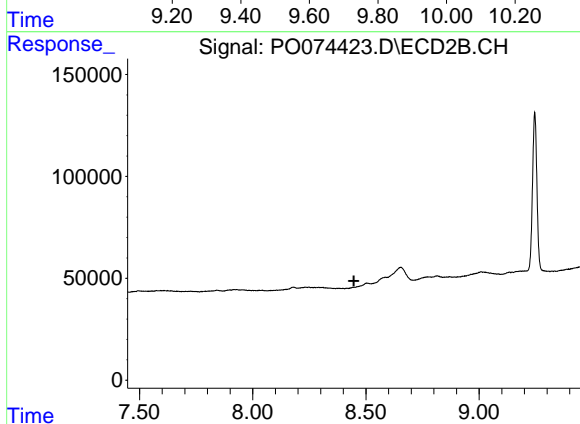
#42 AR-1268-2

R.T.: 0.000 min
 Exp R.T. : 8.241 min
 Response: 0
 Conc: N.D.



#43 AR-1268-3

R.T.: 9.775 min
 Delta R.T.: 0.003 min
 Response: 232605
 Conc: 16.93 ng/ml



#43 AR-1268-3

R.T.: 0.000 min
 Exp R.T. : 8.447 min
 Response: 0
 Conc: N.D.