

Data Path : Z:\pestpcbsrv\HPCHEM1\ECD\_0\Data\P0010920\  
 Data File : P0065398.D  
 Signal(s) : Signal #1: ECD1A.CH Signal #2: ECD2B.CH  
 Acq On : 09 Jan 2020 12:13  
 Operator : AJ/MA  
 Sample : PB125971BL  
 Misc :  
 ALS Vial : 4 Sample Multiplier: 1

Instrument :  
 ECD\_0  
 ClientSampled :  
 PB125971BL

Integration File signal 1: autoint1.e  
 Integration File signal 2: autoint2.e  
 Quant Time: Jan 09 15:37:13 2020  
 Quant Method : Z:\pestpcbsrv\HPCHEM1\ECD\_0\methods\P0010420.M  
 Quant Title : GC EXTRACTABLES  
 QLast Update : Sat Jan 04 04:01:28 2020  
 Response via : Initial Calibration  
 Integrator: ChemStation 6890 Scale Mode: Small noise peaks clipped

Volume Inj. : 2 µl  
 Signal #1 Phase : ZB-MR1 Signal #2 Phase: ZB-MR2  
 Signal #1 Info : 30Mx0.32mmx 0.50µ Signal #2 Info : 30M x 0.32mm x 0.25µm

Compound	RT#1	RT#2	Resp#1	Resp#2	ng/ml	ng/ml
----------	------	------	--------	--------	-------	-------

System Monitoring Compounds

1) SA Tetrachlo...	4.182	3.442	369799	403240	20.251	18.331
2) SA Decachlor...	9.694	8.352	694145	765036	20.487	18.448

Target Compounds

3) L1 AR-1016-1	5.269	4.510	7305	4940	8.376	4.795 #
4) L1 AR-1016-2	0.000	4.521	0	5502	N.D.	3.797 #
5) L1 AR-1016-3	0.000	4.690	0	1761	N.D.	2.264 #
6) L1 AR-1016-4	0.000	4.739	0	3843	N.D.	5.748 #
7) L1 AR-1016-5	0.000	4.946	0	3515	N.D.	4.131 #
8) L2 AR-1221-1	0.000	3.682	0	976	N.D.	3.764 #
9) L2 AR-1221-2	4.479	3.735	7884	6841	50.496	34.696 #
10) L2 AR-1221-3	4.479	3.810	7884	5708	15.098	8.860 #
11) L3 AR-1232-1	4.479	3.810	7884	5708	19.493	11.458 #
12) L3 AR-1232-2	0.000	4.521	0	5502	N.D.	10.203 #
13) L3 AR-1232-3	0.000	4.690	0	1761	N.D.	6.189 #
14) L3 AR-1232-4	0.000	4.779	0	4300	N.D.	16.086 #
15) L3 AR-1232-5	5.656	4.946	10727	3515	60.670	12.260 #
16) L4 AR-1242-1	5.269	4.510	7305	4940	12.548	7.248 #
17) L4 AR-1242-2	0.000	4.521	0	5502	N.D.	5.741 #
18) L4 AR-1242-3	0.000	4.690	0	1761	N.D.	3.435 #
19) L4 AR-1242-4	0.000	4.779	0	4300	N.D.	8.228 #
20) L4 AR-1242-5	0.000	5.296	0	4058	N.D.	5.583 #
21) L5 AR-1248-1	5.269	4.510	7305	4940	15.699	8.911 #
22) L5 AR-1248-2	5.656	4.739	10727	3843	16.256	5.009 #
23) L5 AR-1248-3	0.000	4.779	0	4300	N.D.	5.466 #
24) L5 AR-1248-4	0.000	4.946	0	3515	N.D.	3.667 #
25) L5 AR-1248-5	0.000	5.323	0	3471	N.D.	3.429 #
26) L6 AR-1254-1	0.000	5.296	0	4058	N.D.	2.801 #
27) L6 AR-1254-2	0.000	5.443	0	4257	N.D.	3.218 #
28) L6 AR-1254-3	6.762	5.841	17782	7086	11.473	3.144 #
29) L6 AR-1254-4	0.000	6.065	0	6804	N.D.	4.513 #
30) L6 AR-1254-5	7.457	6.478	7774	20216	5.536	9.082 #
31) L7 AR-1260-1	0.000	5.969	0	14105	N.D.	7.492 #
32) L7 AR-1260-2	0.000	6.142	0	23729	N.D.	9.767 #
33) L7 AR-1260-3	7.457	6.305	7774	15742	5.500	7.273 #
34) L7 AR-1260-4	0.000	6.772	0	18531	N.D.	9.237 #
35) L7 AR-1260-5	8.052	7.014	7350	34938	2.192	7.058 #
36) L8 AR-1262-1	7.457	6.581	7774	28073	4.700	29.778 #
37) L8 AR-1262-2	8.052	7.014	7350	34938	2.295	7.776 #
38) L8 AR-1262-3	0.000	7.298	0	53528	N.D.	31.804 #
39) L8 AR-1262-4	0.000	7.357	0	35479	N.D.	10.317 #
40) L8 AR-1262-5	0.000	7.848	0	23404	N.D.	13.725 #
41) L9 AR-1268-1	0.000	7.298	0	53528	N.D.	10.079 #

Data Path : Z:\pestpcbsrv\HPCHEM1\ECD\_0\Data\P0010920\  
 Data File : P0065398.D  
 Signal(s) : Signal #1: ECD1A.CH Signal #2: ECD2B.CH  
 Acq On : 09 Jan 2020 12:13  
 Operator : AJ/MA  
 Sample : PB125971BL  
 Misc :  
 ALS Vial : 4 Sample Multiplier: 1

Instrument :  
 ECD\_0  
 ClientSampleId :  
 PB125971BL

Integration File signal 1: autoint1.e  
 Integration File signal 2: autoint2.e  
 Quant Time: Jan 09 15:37:13 2020  
 Quant Method : Z:\pestpcbsrv\HPCHEM1\ECD\_0\methods\P0010420.M  
 Quant Title : GC EXTRACTABLES  
 QLast Update : Sat Jan 04 04:01:28 2020  
 Response via : Initial Calibration  
 Integrator: ChemStation 6890 Scale Mode: Small noise peaks clipped

Volume Inj. : 2 µl  
 Signal #1 Phase : ZB-MR1 Signal #2 Phase: ZB-MR2  
 Signal #1 Info : 30Mx0.32mmx 0.50µ Signal #2 Info : 30M x 0.32mm x 0.25µm

	Compound	RT#1	RT#2	Resp#1	Resp#2	ng/ml	ng/ml
42)	L9 AR-1268-2	0.000	7.357	0	35479	N.D.	6.985 #
43)	L9 AR-1268-3	0.000	7.562	0	24923	N.D.	5.867 #
44)	L9 AR-1268-4	0.000	7.848	0	23404	N.D.	11.825 #
45)	L9 AR-1268-5	0.000	8.120	0	8429	N.D.	0.586 #

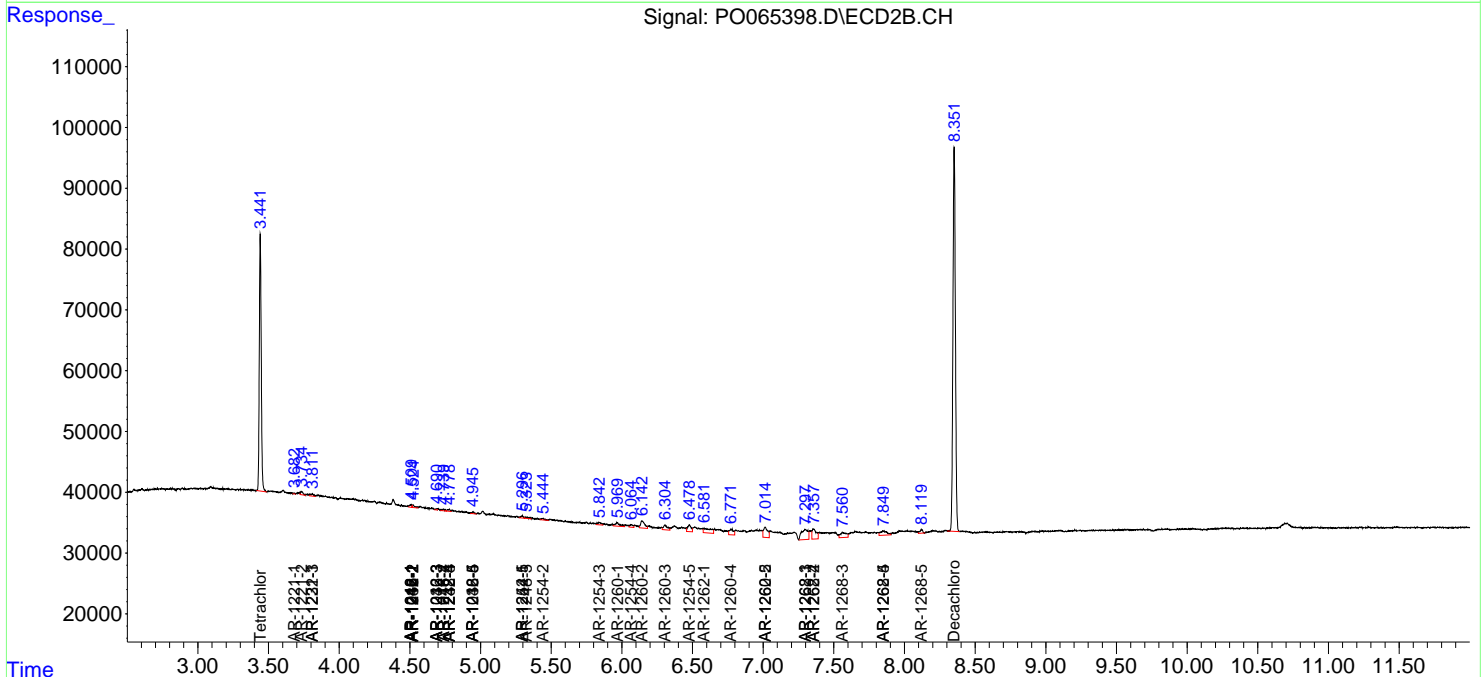
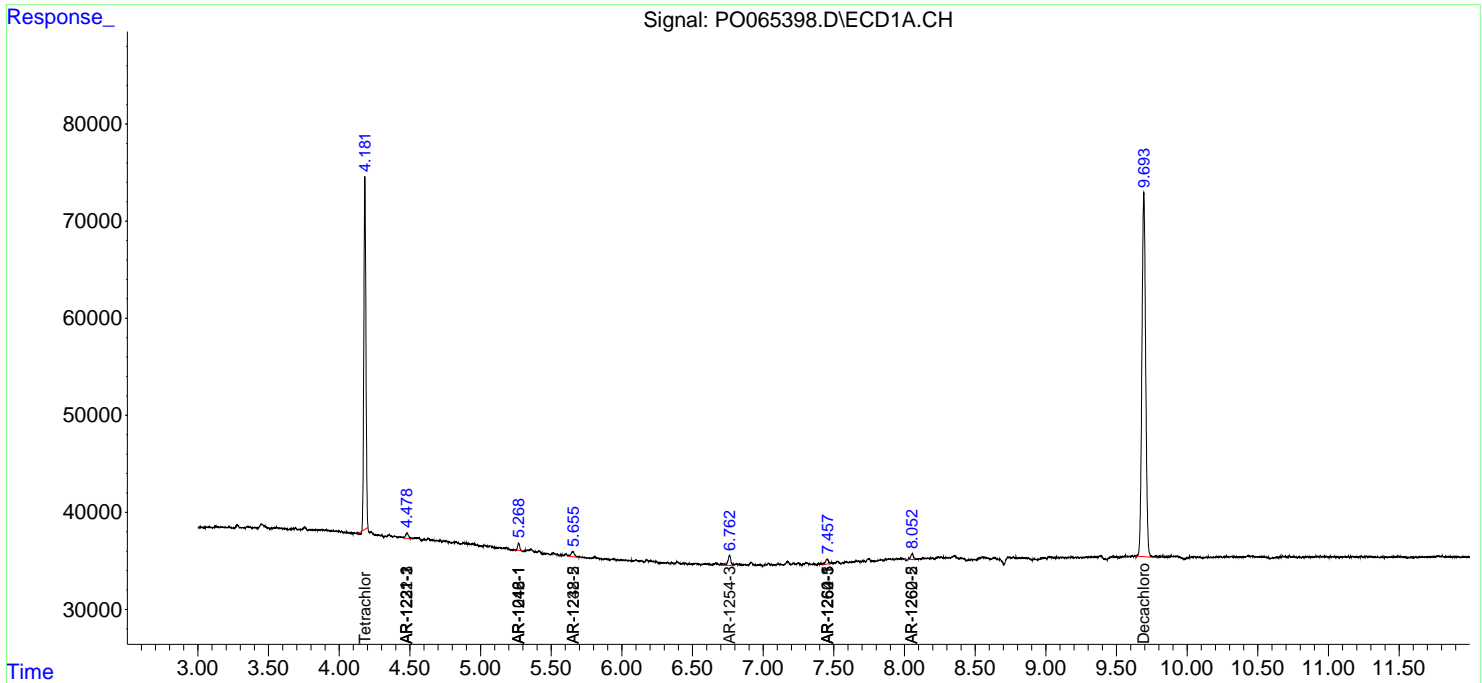
(f)=RT Delta > 1/2 Window (#)=Amounts differ by > 25% (m)=manual int.

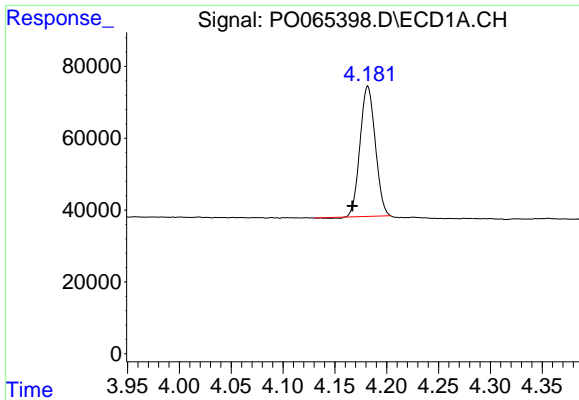
Data Path : Z:\pestpcbsrv\HPCHEM1\ECD\_O\Data\P0010920\  
 Data File : P0065398.D  
 Signal(s) : Signal #1: ECD1A.CH Signal #2: ECD2B.CH  
 Acq On : 09 Jan 2020 12:13  
 Operator : AJ/MA  
 Sample : PB125971BL  
 Misc :  
 ALS Vial : 4 Sample Multiplier: 1

Instrument :  
 ECD\_O  
 ClientSampled :  
 PB125971BL

Integration File signal 1: autoint1.e  
 Integration File signal 2: autoint2.e  
 Quant Time: Jan 09 15:37:13 2020  
 Quant Method : Z:\pestpcbsrv\HPCHEM1\ECD\_O\methods\P0010420.M  
 Quant Title : GC EXTRACTABLES  
 QLast Update : Sat Jan 04 04:01:28 2020  
 Response via : Initial Calibration  
 Integrator: ChemStation 6890 Scale Mode: Small noise peaks clipped

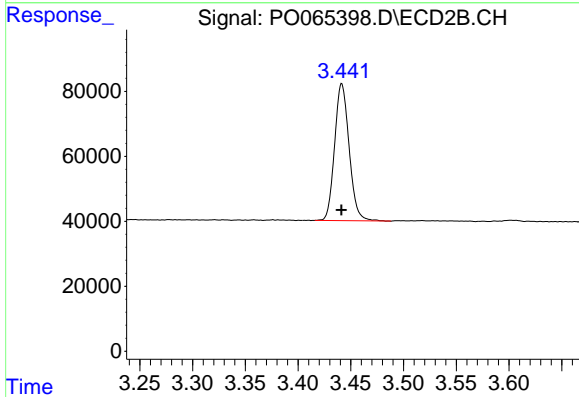
Volume Inj. : 2 µl  
 Signal #1 Phase : ZB-MR1 Signal #2 Phase: ZB-MR2  
 Signal #1 Info : 30Mx0.32mmx 0.50µ Signal #2 Info : 30M x 0.32mm x 0.25µm



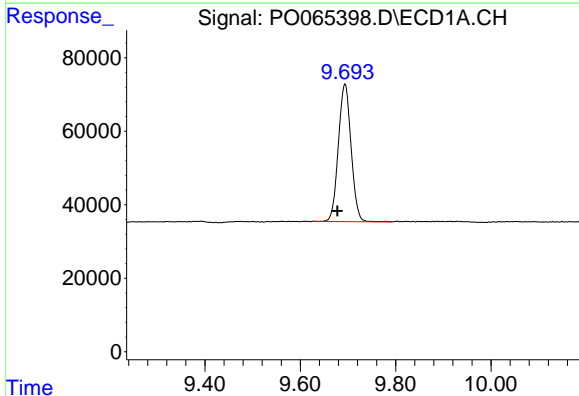


#1 Tetrachloro-m-xylene  
 R.T.: 4.182 min  
 Delta R.T.: 0.015 min  
 Response: 369799  
 Conc: 20.25 ng/ml

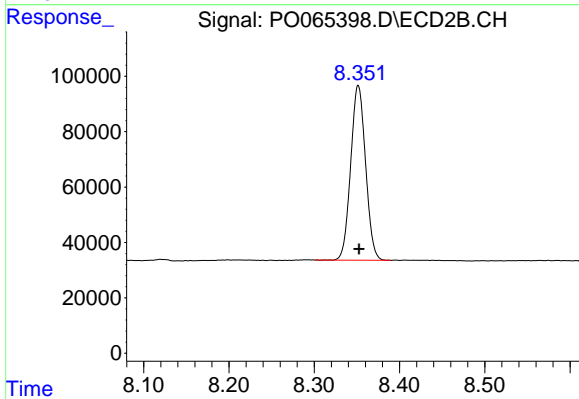
Instrument :  
 ECD\_O  
 ClientSampleId :  
 PB125971BL



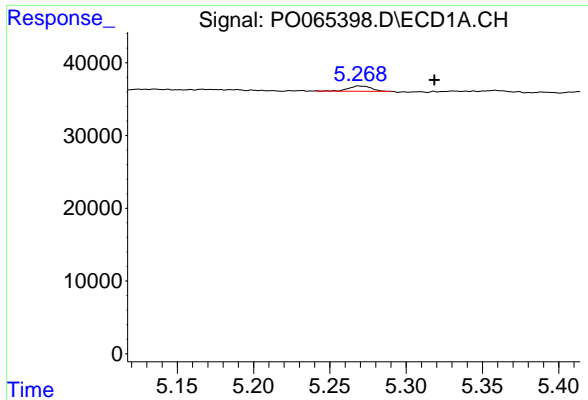
#1 Tetrachloro-m-xylene  
 R.T.: 3.442 min  
 Delta R.T.: 0.000 min  
 Response: 403240  
 Conc: 18.33 ng/ml



#2 Decachlorobiphenyl  
 R.T.: 9.694 min  
 Delta R.T.: 0.015 min  
 Response: 694145  
 Conc: 20.49 ng/ml



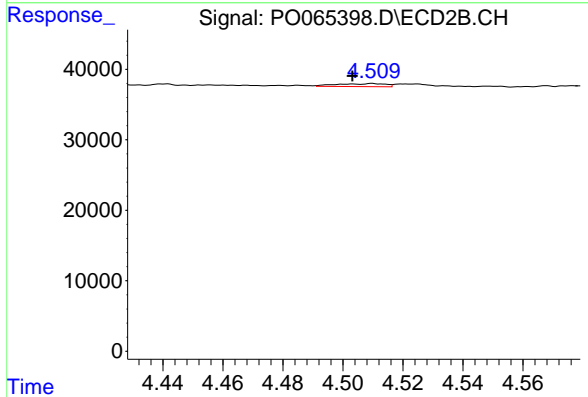
#2 Decachlorobiphenyl  
 R.T.: 8.352 min  
 Delta R.T.: 0.000 min  
 Response: 765036  
 Conc: 18.45 ng/ml



#3 AR-1016-1

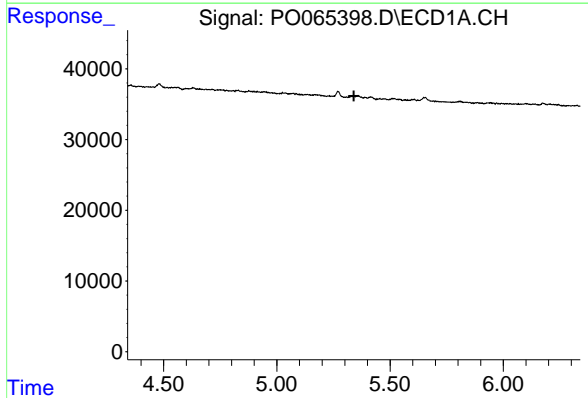
R.T.: 5.269 min  
 Delta R.T.: -0.049 min  
 Response: 7305  
 Conc: 8.38 ng/ml

Instrument :  
 ECD\_O  
 ClientSampleId :  
 PB125971BL



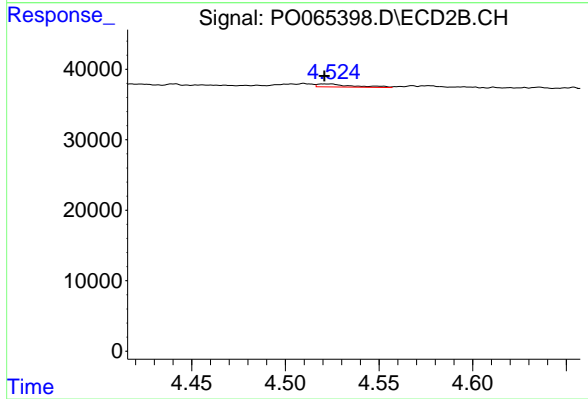
#3 AR-1016-1

R.T.: 4.510 min  
 Delta R.T.: 0.007 min  
 Response: 4940  
 Conc: 4.79 ng/ml



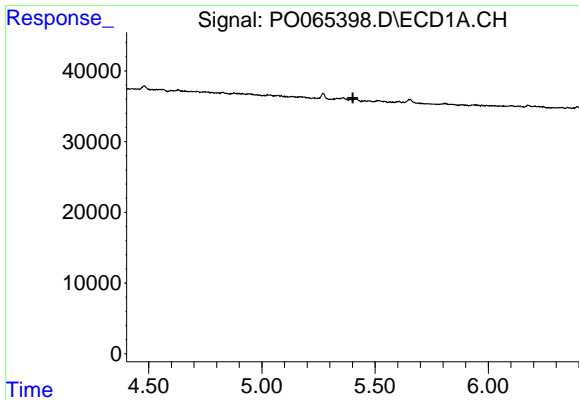
#4 AR-1016-2

R.T.: 0.000 min  
 Exp R.T. : 5.341 min  
 Response: 0  
 Conc: N.D.



#4 AR-1016-2

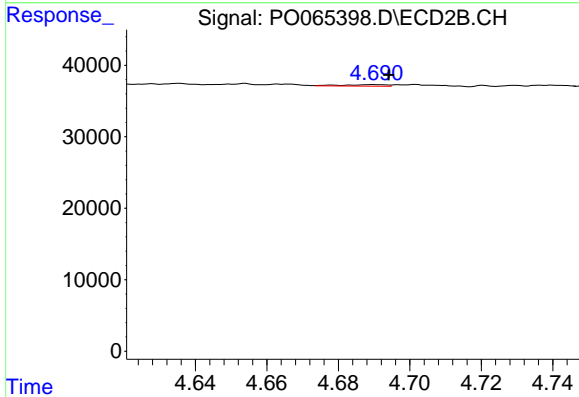
R.T.: 4.521 min  
 Delta R.T.: 0.000 min  
 Response: 5502  
 Conc: 3.80 ng/ml



#5 AR-1016-3

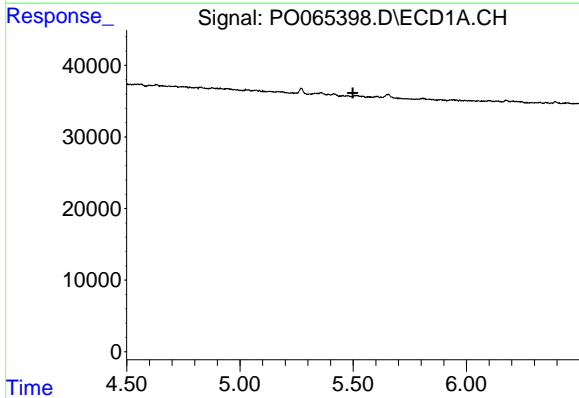
R.T.: 0.000 min  
 Exp R.T. : 5.402 min  
 Response: 0  
 Conc: N.D.

Instrument :  
 ECD\_O  
 ClientSampleId :  
 PB125971BL



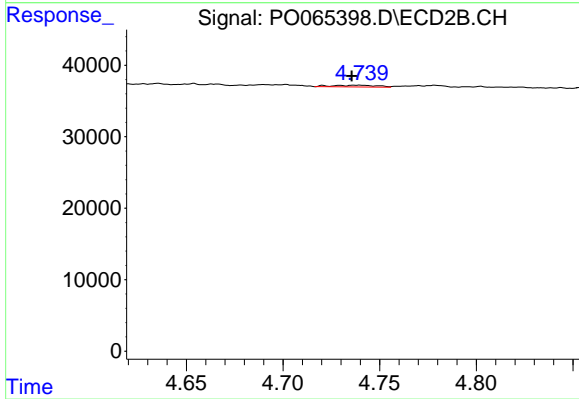
#5 AR-1016-3

R.T.: 4.690 min  
 Delta R.T.: -0.004 min  
 Response: 1761  
 Conc: 2.26 ng/ml



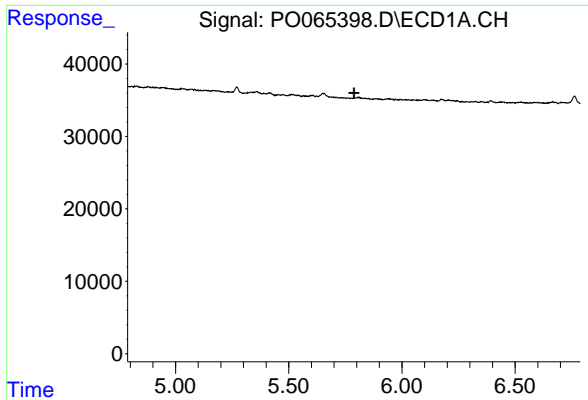
#6 AR-1016-4

R.T.: 0.000 min  
 Exp R.T. : 5.498 min  
 Response: 0  
 Conc: N.D.



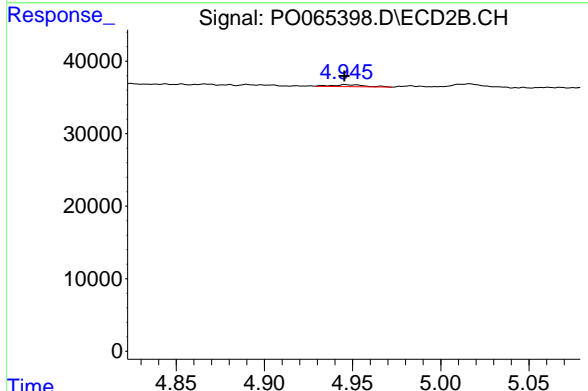
#6 AR-1016-4

R.T.: 4.739 min  
 Delta R.T.: 0.004 min  
 Response: 3843  
 Conc: 5.75 ng/ml

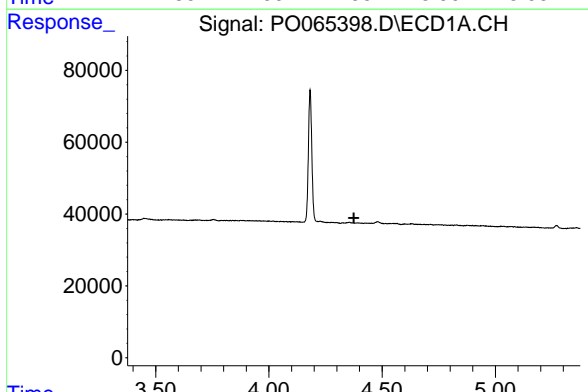


#7 AR-1016-5  
 R.T.: 0.000 min  
 Exp R.T. : 5.788 min  
 Response: 0  
 Conc: N.D.

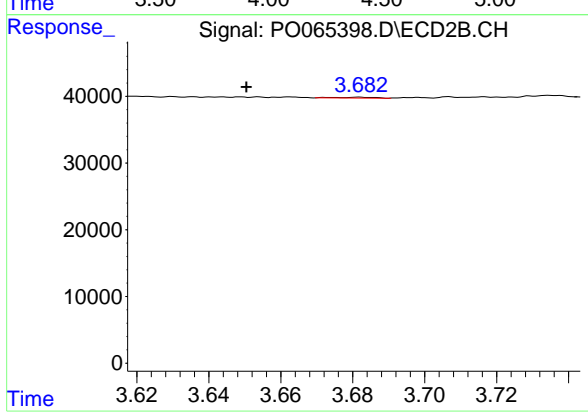
Instrument :  
 ECD\_O  
 ClientSampleId :  
 PB125971BL



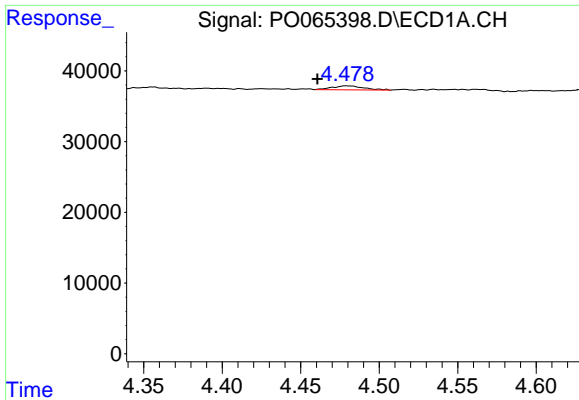
#7 AR-1016-5  
 R.T.: 4.946 min  
 Delta R.T.: 0.000 min  
 Response: 3515  
 Conc: 4.13 ng/ml



#8 AR-1221-1  
 R.T.: 0.000 min  
 Exp R.T. : 4.375 min  
 Response: 0  
 Conc: N.D.



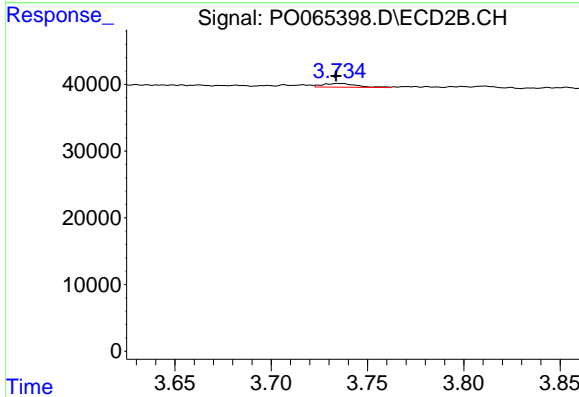
#8 AR-1221-1  
 R.T.: 3.682 min  
 Delta R.T.: 0.031 min  
 Response: 976  
 Conc: 3.76 ng/ml



#9 AR-1221-2

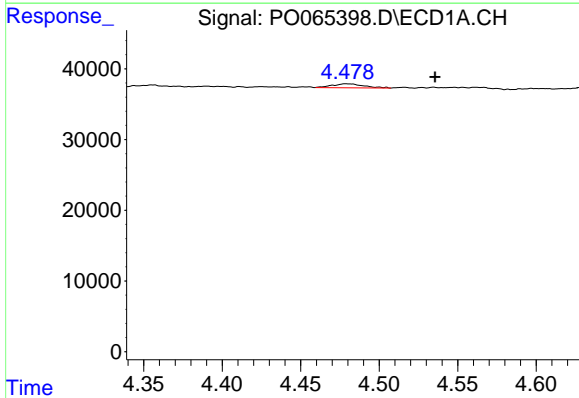
R.T.: 4.479 min  
 Delta R.T.: 0.019 min  
 Response: 7884  
 Conc: 50.50 ng/ml

Instrument :  
 ECD\_O  
 ClientSampleId :  
 PB125971BL



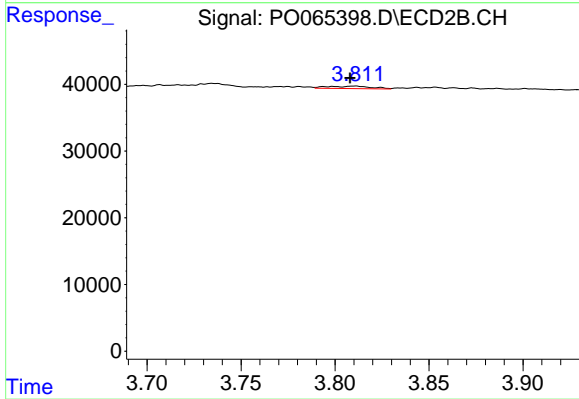
#9 AR-1221-2

R.T.: 3.735 min  
 Delta R.T.: 0.002 min  
 Response: 6841  
 Conc: 34.70 ng/ml



#10 AR-1221-3

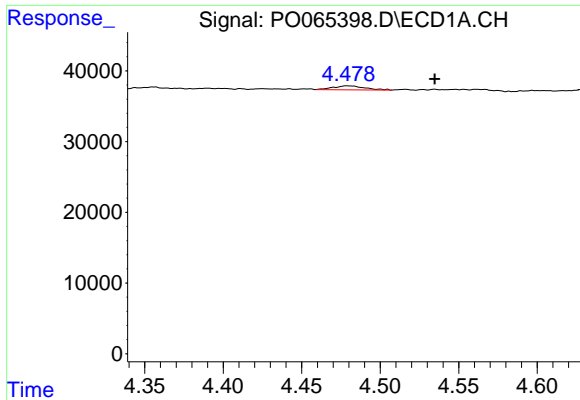
R.T.: 4.479 min  
 Delta R.T.: -0.056 min  
 Response: 7884  
 Conc: 15.10 ng/ml



#10 AR-1221-3

R.T.: 3.810 min  
 Delta R.T.: 0.002 min  
 Response: 5708  
 Conc: 8.86 ng/ml

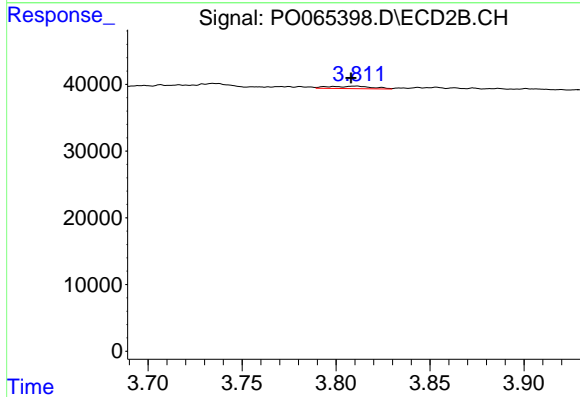




#11 AR-1232-1

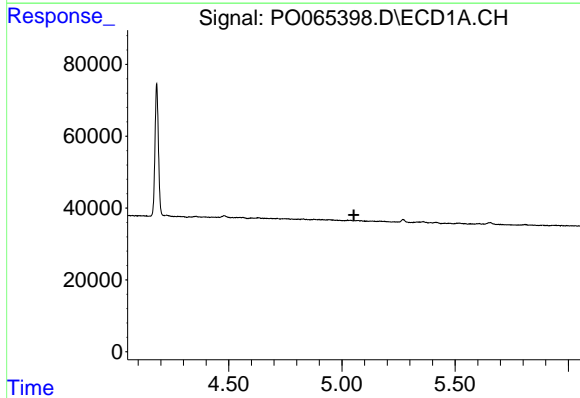
R.T.: 4.479 min  
 Delta R.T.: -0.056 min  
 Response: 7884  
 Conc: 19.49 ng/ml

Instrument :  
 ECD\_O  
 ClientSampleId :  
 PB125971BL



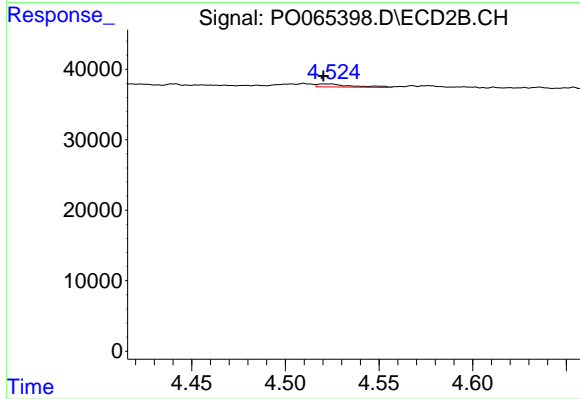
#11 AR-1232-1

R.T.: 3.810 min  
 Delta R.T.: 0.002 min  
 Response: 5708  
 Conc: 11.46 ng/ml



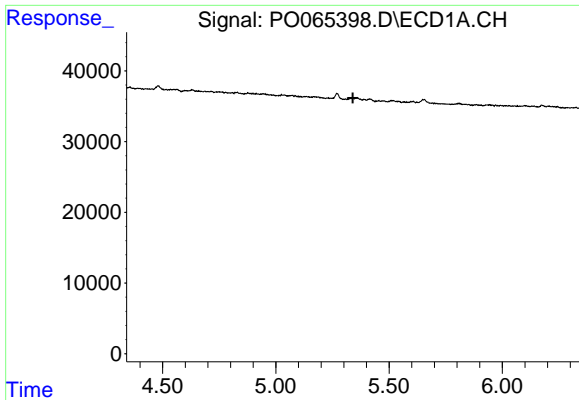
#12 AR-1232-2

R.T.: 0.000 min  
 Exp R.T. : 5.053 min  
 Response: 0  
 Conc: N.D.



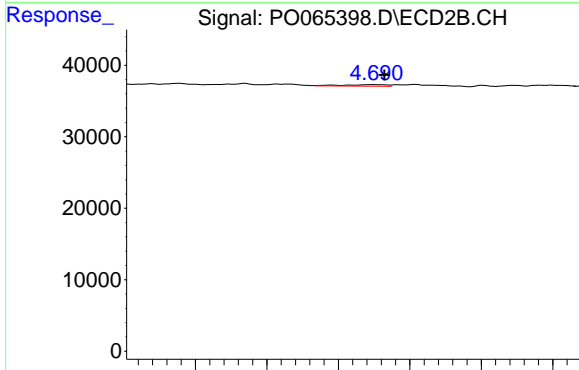
#12 AR-1232-2

R.T.: 4.521 min  
 Delta R.T.: 0.001 min  
 Response: 5502  
 Conc: 10.20 ng/ml

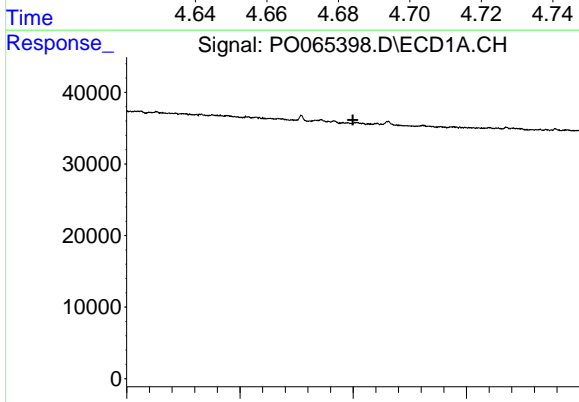


#13 AR-1232-3  
 R.T.: 0.000 min  
 Exp R.T.: 5.341 min  
 Response: 0  
 Conc: N.D.

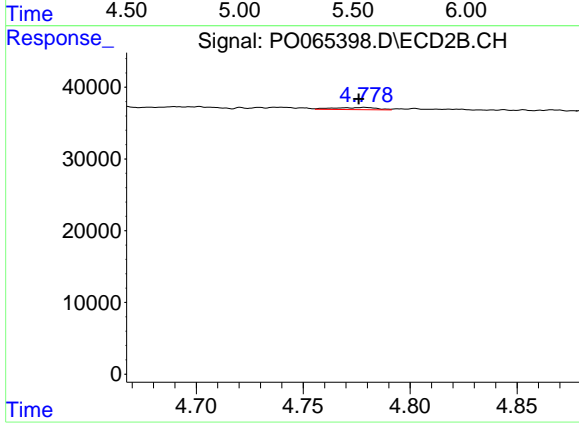
Instrument :  
 ECD\_O  
 ClientSampleId :  
 PB125971BL



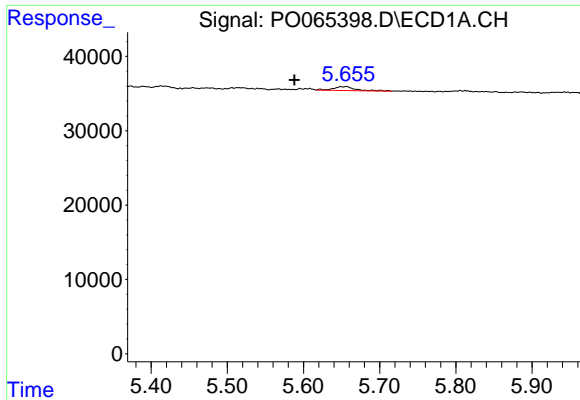
#13 AR-1232-3  
 R.T.: 4.690 min  
 Delta R.T.: -0.003 min  
 Response: 1761  
 Conc: 6.19 ng/ml



#14 AR-1232-4  
 R.T.: 0.000 min  
 Exp R.T.: 5.499 min  
 Response: 0  
 Conc: N.D.



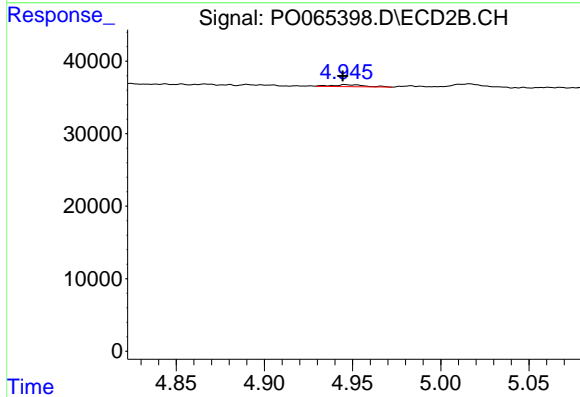
#14 AR-1232-4  
 R.T.: 4.779 min  
 Delta R.T.: 0.003 min  
 Response: 4300  
 Conc: 16.09 ng/ml



#15 AR-1232-5

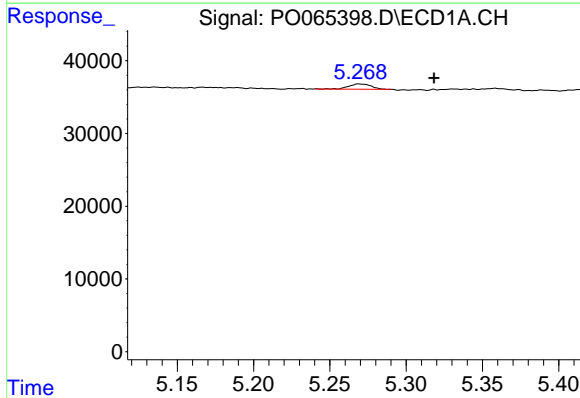
R.T.: 5.656 min  
 Delta R.T.: 0.068 min  
 Response: 10727  
 Conc: 60.67 ng/ml

Instrument :  
 ECD\_O  
 ClientSampleId :  
 PB125971BL



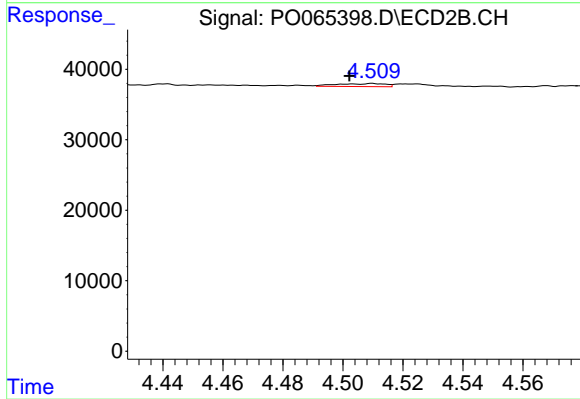
#15 AR-1232-5

R.T.: 4.946 min  
 Delta R.T.: 0.002 min  
 Response: 3515  
 Conc: 12.26 ng/ml



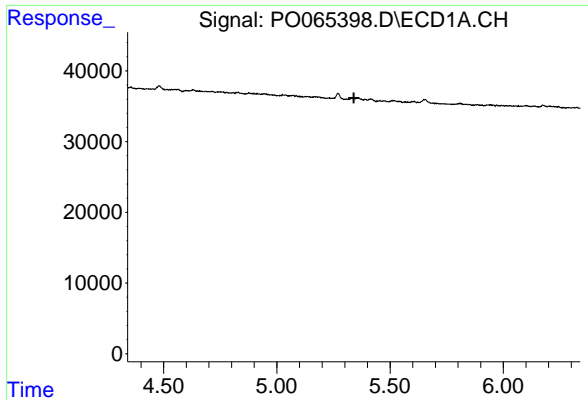
#16 AR-1242-1

R.T.: 5.269 min  
 Delta R.T.: -0.049 min  
 Response: 7305  
 Conc: 12.55 ng/ml



#16 AR-1242-1

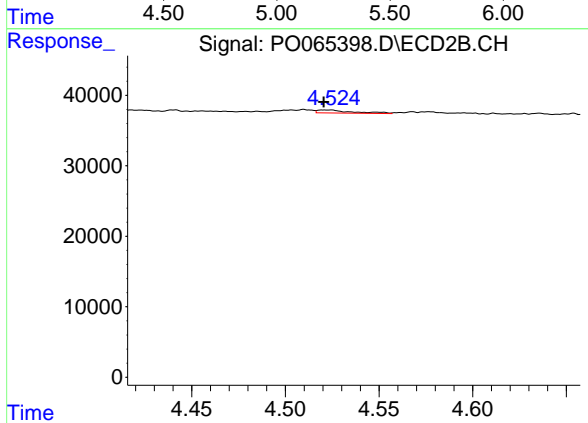
R.T.: 4.510 min  
 Delta R.T.: 0.008 min  
 Response: 4940  
 Conc: 7.25 ng/ml



#17 AR-1242-2

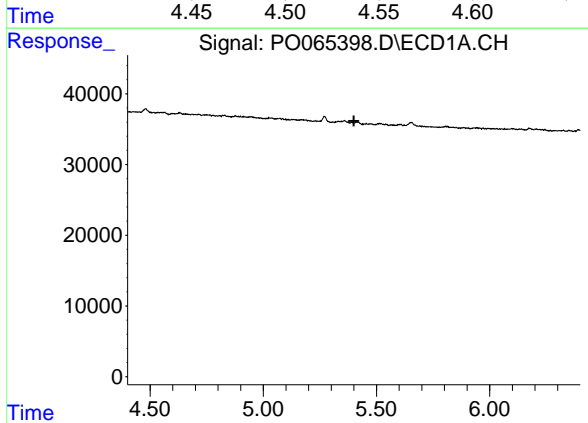
R.T.: 0.000 min  
 Exp R.T.: 5.340 min  
 Response: 0  
 Conc: N.D.

Instrument :  
 ECD\_O  
 ClientSampleId :  
 PB125971BL



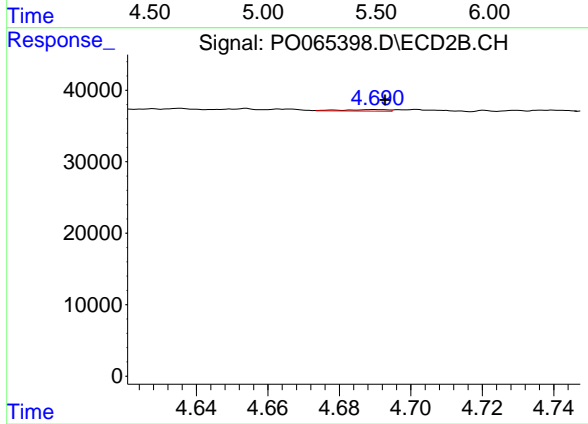
#17 AR-1242-2

R.T.: 4.521 min  
 Delta R.T.: 0.000 min  
 Response: 5502  
 Conc: 5.74 ng/ml



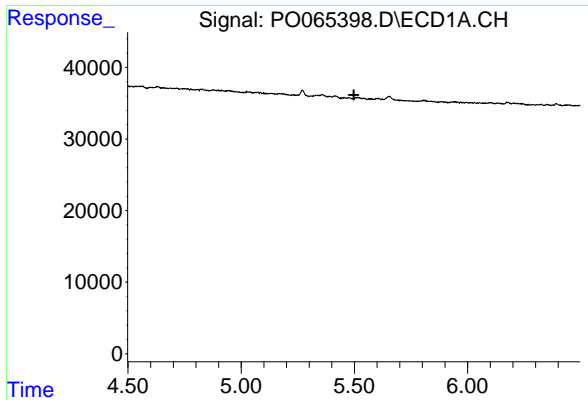
#18 AR-1242-3

R.T.: 0.000 min  
 Exp R.T.: 5.400 min  
 Response: 0  
 Conc: N.D.



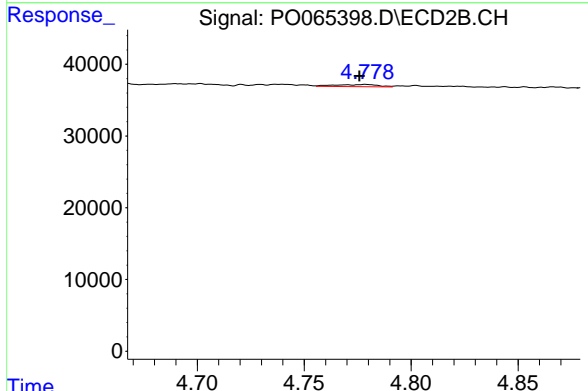
#18 AR-1242-3

R.T.: 4.690 min  
 Delta R.T.: -0.003 min  
 Response: 1761  
 Conc: 3.43 ng/ml

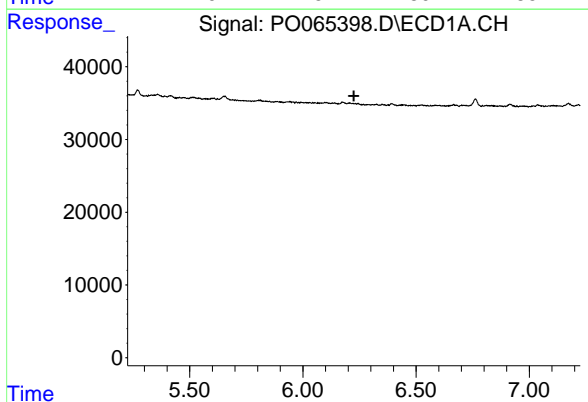


#19 AR-1242-4  
 R.T.: 0.000 min  
 Exp R.T. : 5.498 min  
 Response: 0  
 Conc: N.D.

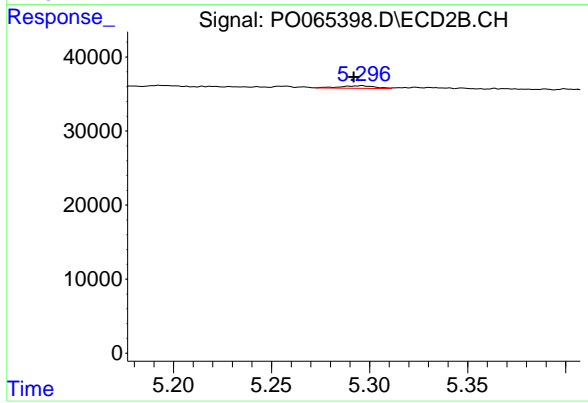
Instrument :  
 ECD\_O  
 ClientSampleId :  
 PB125971BL



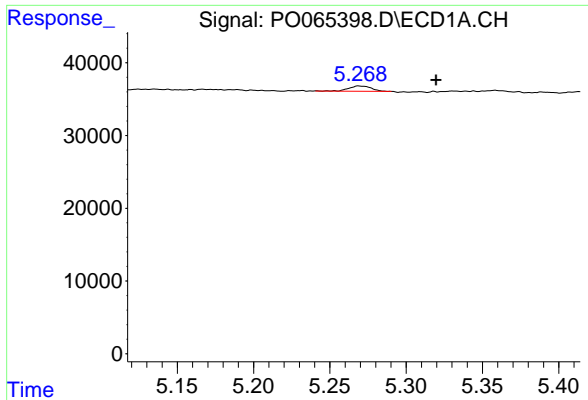
#19 AR-1242-4  
 R.T.: 4.779 min  
 Delta R.T.: 0.003 min  
 Response: 4300  
 Conc: 8.23 ng/ml



#20 AR-1242-5  
 R.T.: 0.000 min  
 Exp R.T. : 6.225 min  
 Response: 0  
 Conc: N.D.

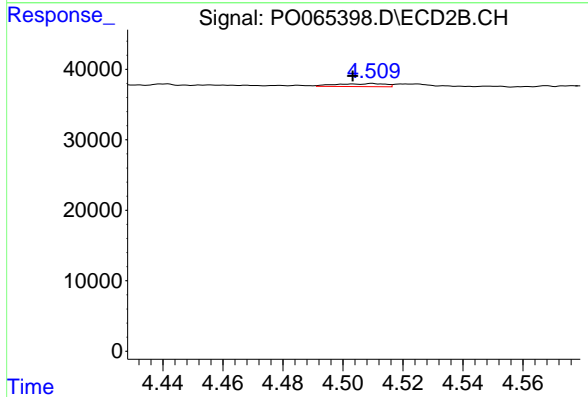


#20 AR-1242-5  
 R.T.: 5.296 min  
 Delta R.T.: 0.004 min  
 Response: 4058  
 Conc: 5.58 ng/ml

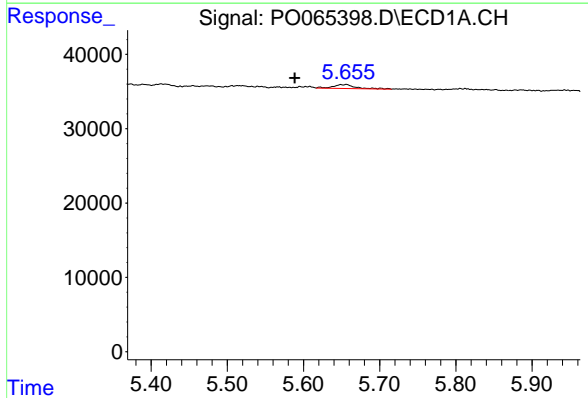


#21 AR-1248-1  
 R.T.: 5.269 min  
 Delta R.T.: -0.050 min  
 Response: 7305  
 Conc: 15.70 ng/ml

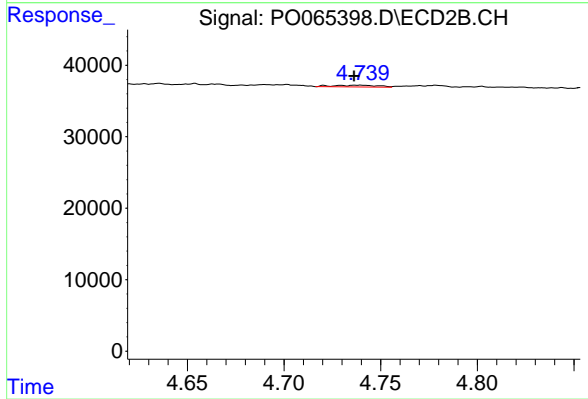
Instrument :  
 ECD\_O  
 ClientSampleId :  
 PB125971BL



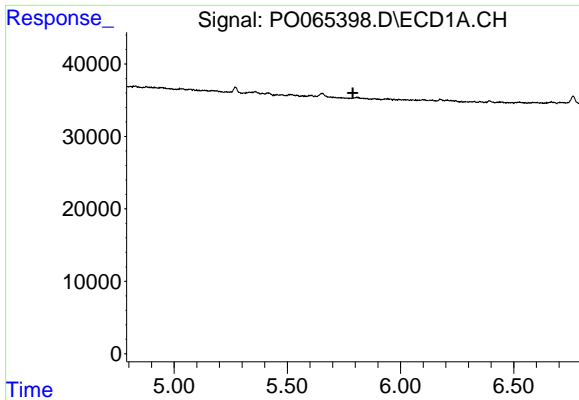
#21 AR-1248-1  
 R.T.: 4.510 min  
 Delta R.T.: 0.007 min  
 Response: 4940  
 Conc: 8.91 ng/ml



#22 AR-1248-2  
 R.T.: 5.656 min  
 Delta R.T.: 0.068 min  
 Response: 10727  
 Conc: 16.26 ng/ml



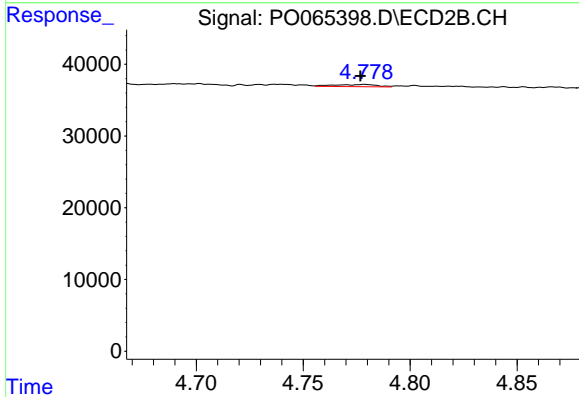
#22 AR-1248-2  
 R.T.: 4.739 min  
 Delta R.T.: 0.003 min  
 Response: 3843  
 Conc: 5.01 ng/ml



#23 AR-1248-3

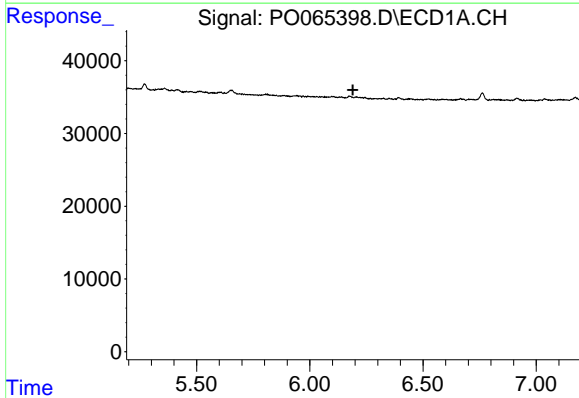
R.T.: 0.000 min  
 Exp R.T.: 5.790 min  
 Response: 0  
 Conc: N.D.

Instrument :  
 ECD\_O  
 ClientSampleId :  
 PB125971BL



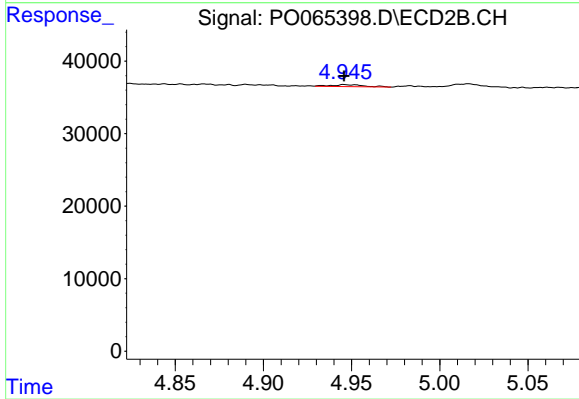
#23 AR-1248-3

R.T.: 4.779 min  
 Delta R.T.: 0.002 min  
 Response: 4300  
 Conc: 5.47 ng/ml



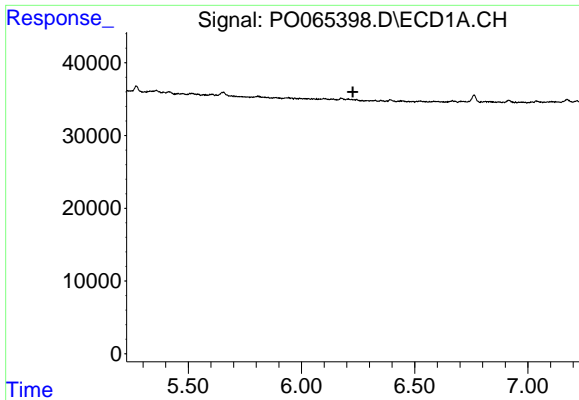
#24 AR-1248-4

R.T.: 0.000 min  
 Exp R.T.: 6.190 min  
 Response: 0  
 Conc: N.D.



#24 AR-1248-4

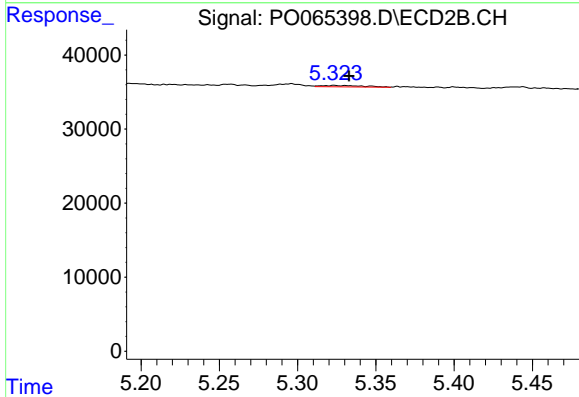
R.T.: 4.946 min  
 Delta R.T.: 0.000 min  
 Response: 3515  
 Conc: 3.67 ng/ml



#25 AR-1248-5

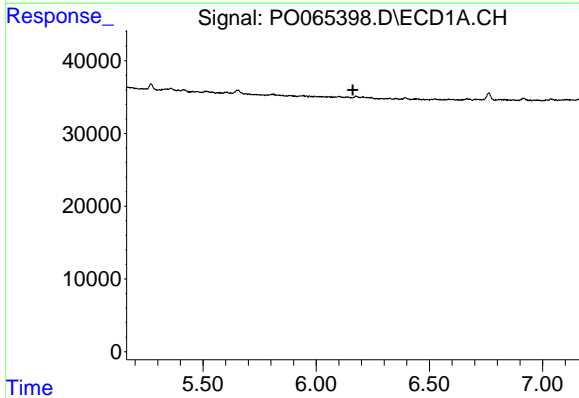
R.T.: 0.000 min  
 Exp R.T. : 6.227 min  
 Response: 0  
 Conc: N.D.

Instrument :  
 ECD\_O  
 ClientSampleId :  
 PB125971BL



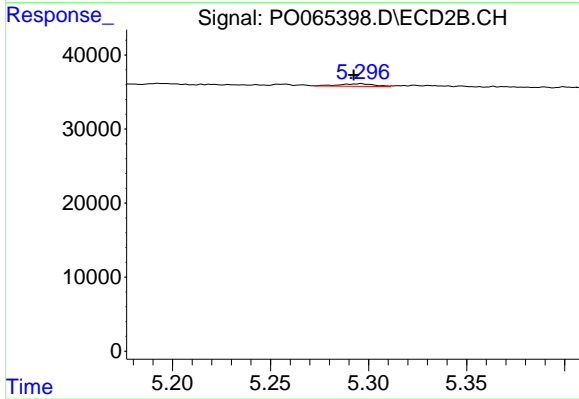
#25 AR-1248-5

R.T.: 5.323 min  
 Delta R.T.: -0.010 min  
 Response: 3471  
 Conc: 3.43 ng/ml



#26 AR-1254-1

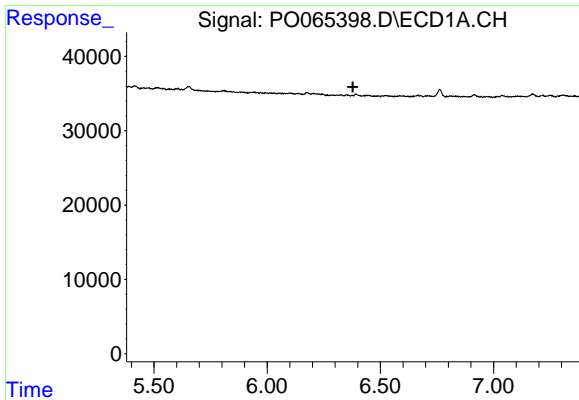
R.T.: 0.000 min  
 Exp R.T. : 6.162 min  
 Response: 0  
 Conc: N.D.



#26 AR-1254-1

R.T.: 5.296 min  
 Delta R.T.: 0.003 min  
 Response: 4058  
 Conc: 2.80 ng/ml

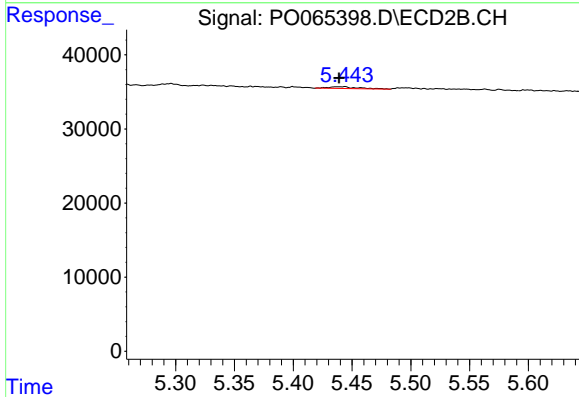




#27 AR-1254-2

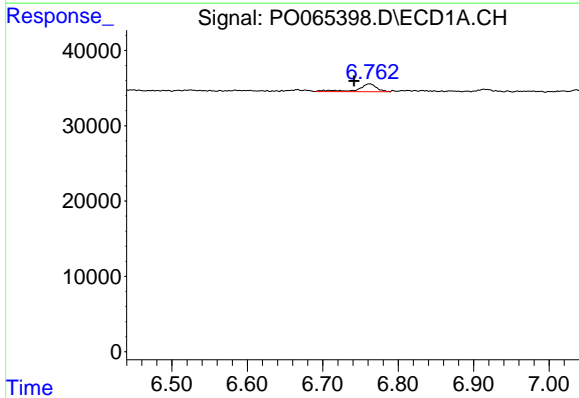
R.T.: 0.000 min  
 Exp R.T.: 6.378 min  
 Response: 0  
 Conc: N.D.

Instrument :  
 ECD\_O  
 ClientSampleId :  
 PB125971BL



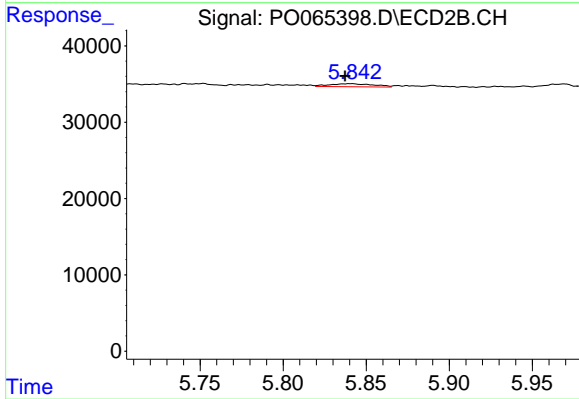
#27 AR-1254-2

R.T.: 5.443 min  
 Delta R.T.: 0.004 min  
 Response: 4257  
 Conc: 3.22 ng/ml



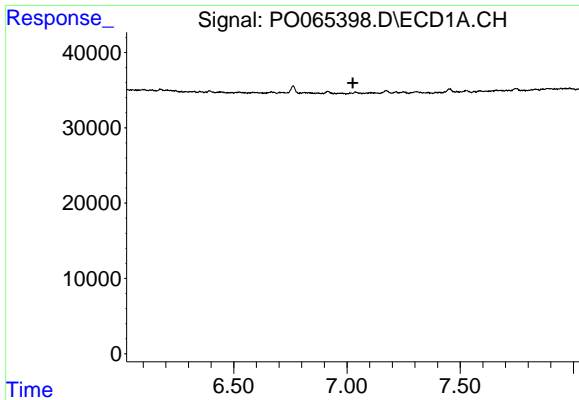
#28 AR-1254-3

R.T.: 6.762 min  
 Delta R.T.: 0.021 min  
 Response: 17782  
 Conc: 11.47 ng/ml



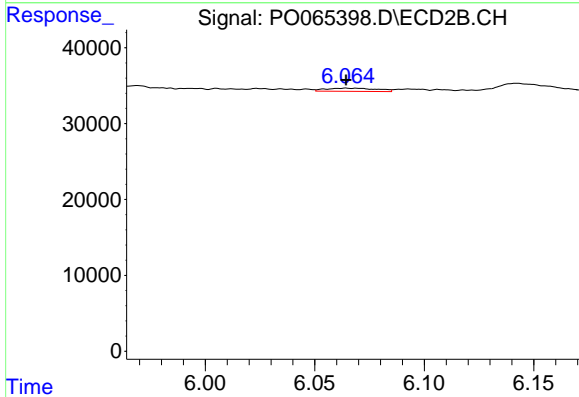
#28 AR-1254-3

R.T.: 5.841 min  
 Delta R.T.: 0.004 min  
 Response: 7086  
 Conc: 3.14 ng/ml

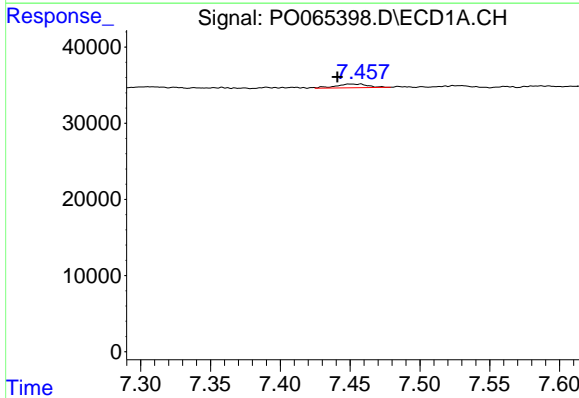


#29 AR-1254-4  
 R.T.: 0.000 min  
 Exp R.T.: 7.026 min  
 Response: 0  
 Conc: N.D.

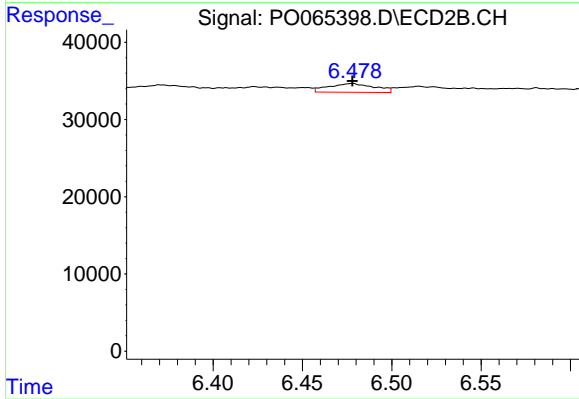
Instrument :  
 ECD\_O  
 ClientSampleId :  
 PB125971BL



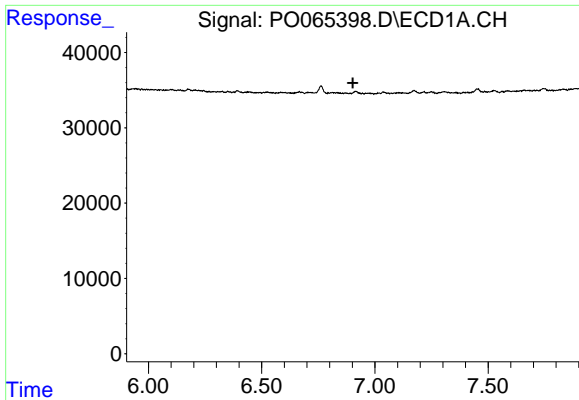
#29 AR-1254-4  
 R.T.: 6.065 min  
 Delta R.T.: 0.000 min  
 Response: 6804  
 Conc: 4.51 ng/ml



#30 AR-1254-5  
 R.T.: 7.457 min  
 Delta R.T.: 0.016 min  
 Response: 7774  
 Conc: 5.54 ng/ml



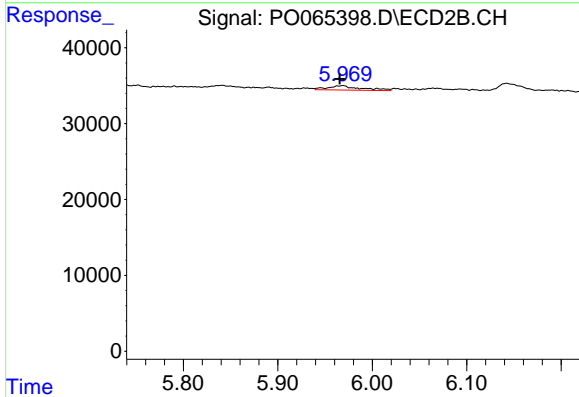
#30 AR-1254-5  
 R.T.: 6.478 min  
 Delta R.T.: 0.000 min  
 Response: 20216  
 Conc: 9.08 ng/ml



#31 AR-1260-1

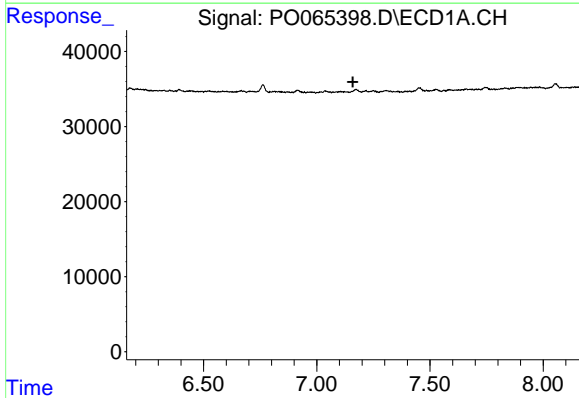
R.T.: 0.000 min  
 Exp R.T. : 6.903 min  
 Response: 0  
 Conc: N.D.

Instrument :  
 ECD\_O  
 ClientSampleId :  
 PB125971BL



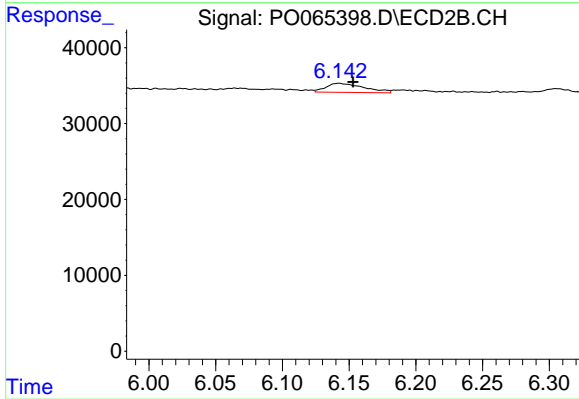
#31 AR-1260-1

R.T.: 5.969 min  
 Delta R.T.: 0.004 min  
 Response: 14105  
 Conc: 7.49 ng/ml



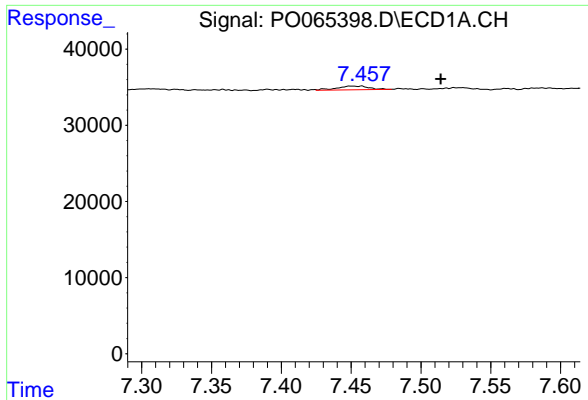
#32 AR-1260-2

R.T.: 0.000 min  
 Exp R.T. : 7.160 min  
 Response: 0  
 Conc: N.D.



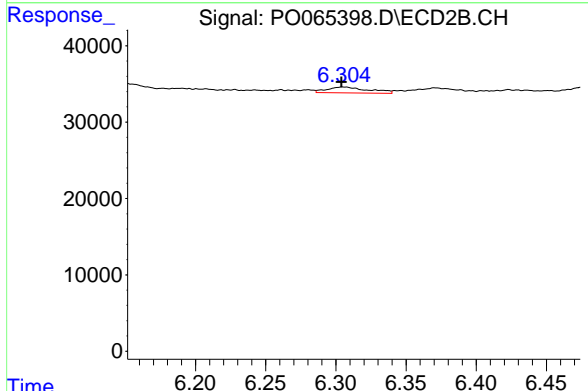
#32 AR-1260-2

R.T.: 6.142 min  
 Delta R.T.: -0.011 min  
 Response: 23729  
 Conc: 9.77 ng/ml

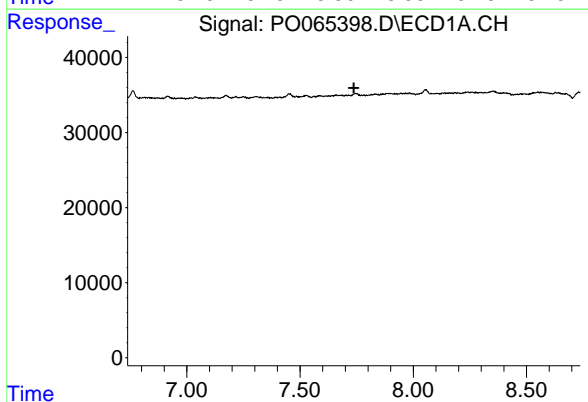


#33 AR-1260-3  
 R.T.: 7.457 min  
 Delta R.T.: -0.057 min  
 Response: 7774  
 Conc: 5.50 ng/ml

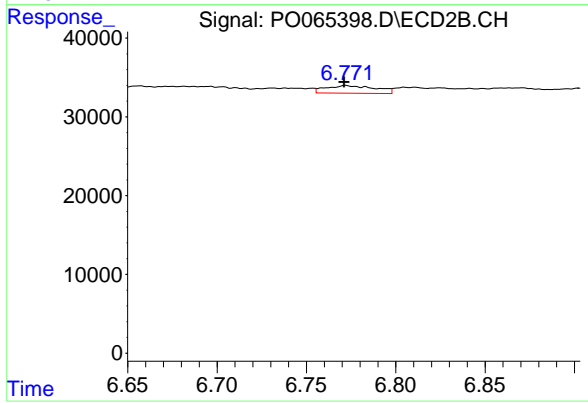
Instrument :  
 ECD\_O  
 ClientSampleId :  
 PB125971BL



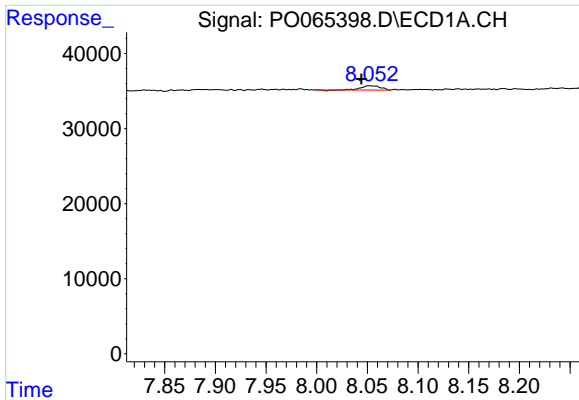
#33 AR-1260-3  
 R.T.: 6.305 min  
 Delta R.T.: 0.002 min  
 Response: 15742  
 Conc: 7.27 ng/ml



#34 AR-1260-4  
 R.T.: 0.000 min  
 Exp R.T. : 7.737 min  
 Response: 0  
 Conc: N.D.



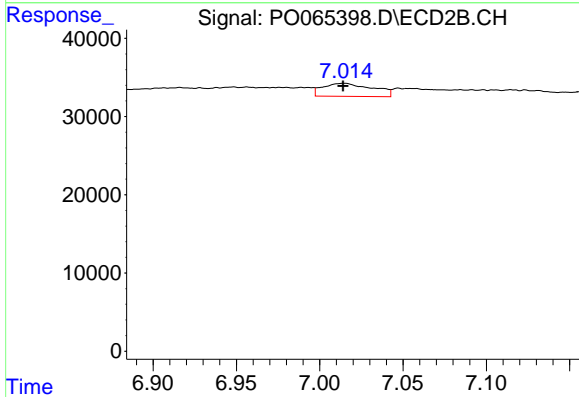
#34 AR-1260-4  
 R.T.: 6.772 min  
 Delta R.T.: 0.000 min  
 Response: 18531  
 Conc: 9.24 ng/ml



#35 AR-1260-5

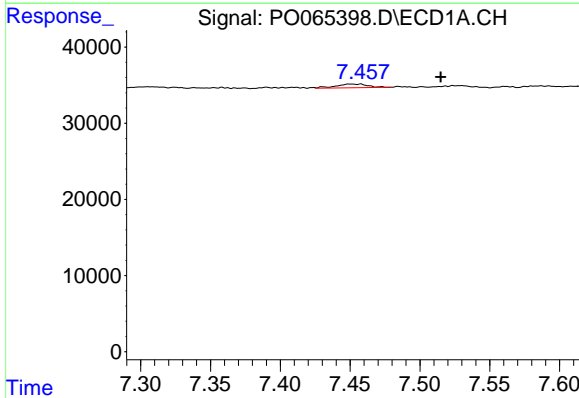
R.T.: 8.052 min  
 Delta R.T.: 0.008 min  
 Response: 7350  
 Conc: 2.19 ng/ml

**Instrument :**  
 ECD\_O  
**ClientSampleId :**  
 PB125971BL



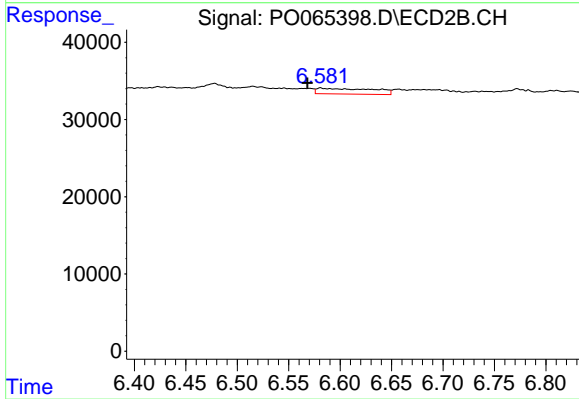
#35 AR-1260-5

R.T.: 7.014 min  
 Delta R.T.: 0.000 min  
 Response: 34938  
 Conc: 7.06 ng/ml



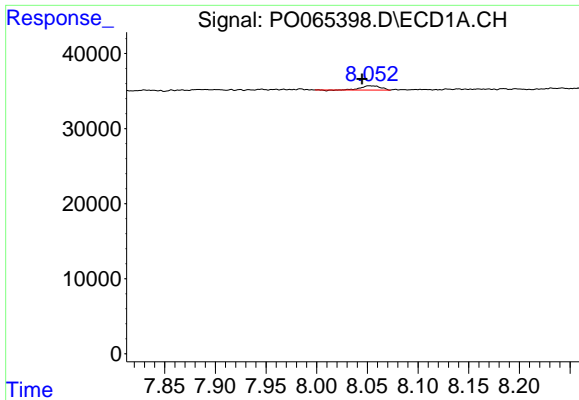
#36 AR-1262-1

R.T.: 7.457 min  
 Delta R.T.: -0.058 min  
 Response: 7774  
 Conc: 4.70 ng/ml



#36 AR-1262-1

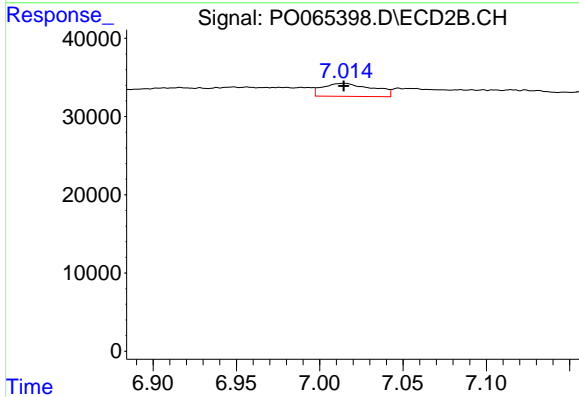
R.T.: 6.581 min  
 Delta R.T.: 0.013 min  
 Response: 28073  
 Conc: 29.78 ng/ml



#37 AR-1262-2

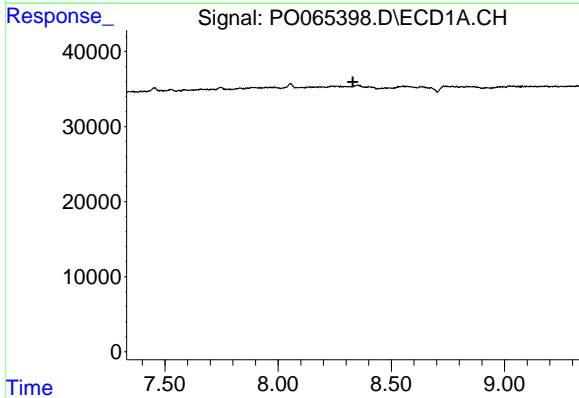
R.T.: 8.052 min  
 Delta R.T.: 0.007 min  
 Response: 7350  
 Conc: 2.30 ng/ml

**Instrument :**  
 ECD\_O  
**ClientSampleId :**  
 PB125971BL



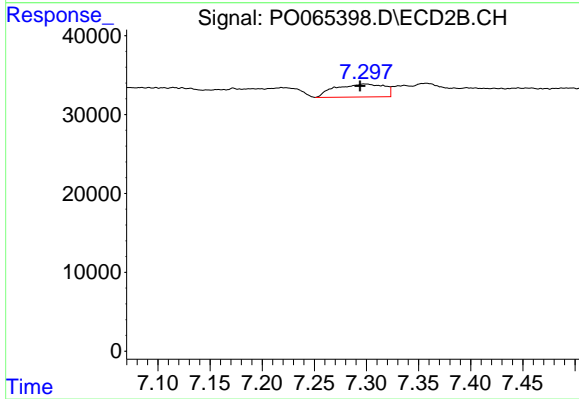
#37 AR-1262-2

R.T.: 7.014 min  
 Delta R.T.: 0.000 min  
 Response: 34938  
 Conc: 7.78 ng/ml



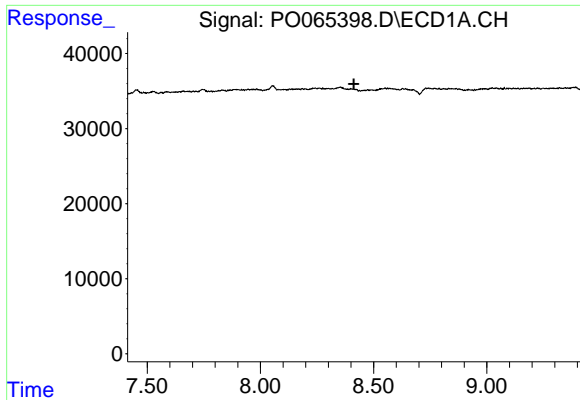
#38 AR-1262-3

R.T.: 0.000 min  
 Exp R.T. : 8.330 min  
 Response: 0  
 Conc: N.D.



#38 AR-1262-3

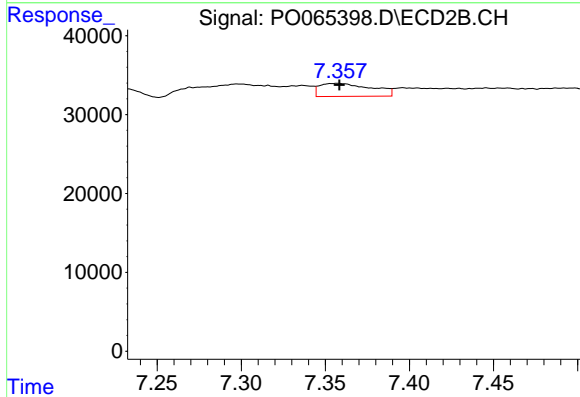
R.T.: 7.298 min  
 Delta R.T.: 0.004 min  
 Response: 53528  
 Conc: 31.80 ng/ml



#39 AR-1262-4

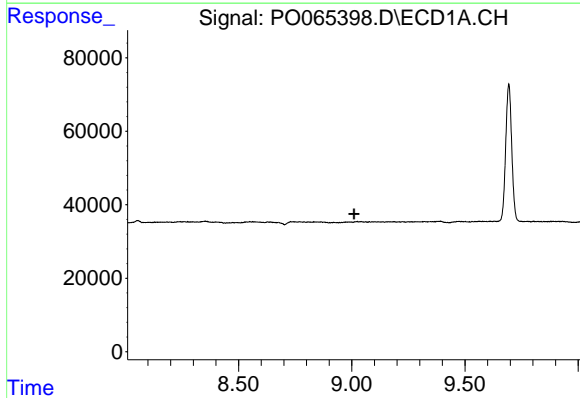
R.T.: 0.000 min  
 Exp R.T.: 8.413 min  
 Response: 0  
 Conc: N.D.

Instrument :  
 ECD\_O  
 ClientSampleId :  
 PB125971BL



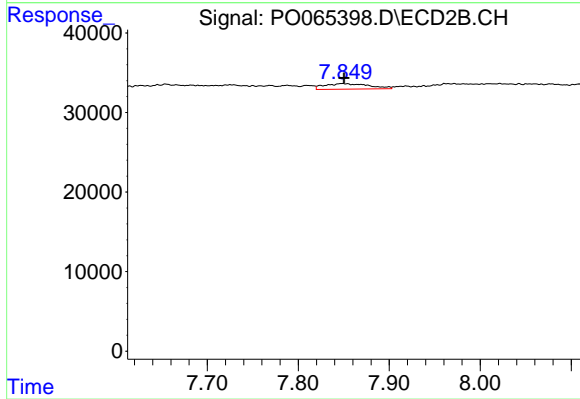
#39 AR-1262-4

R.T.: 7.357 min  
 Delta R.T.: 0.000 min  
 Response: 35479  
 Conc: 10.32 ng/ml



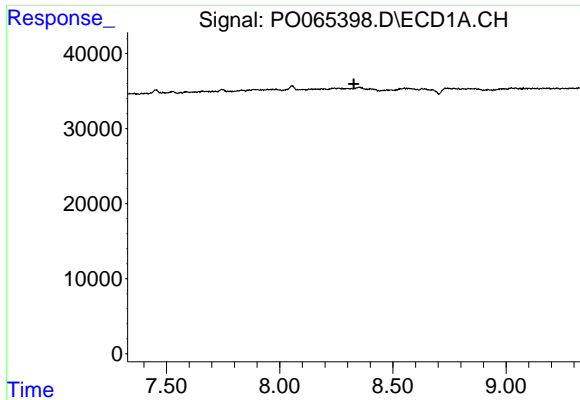
#40 AR-1262-5

R.T.: 0.000 min  
 Exp R.T.: 9.010 min  
 Response: 0  
 Conc: N.D.



#40 AR-1262-5

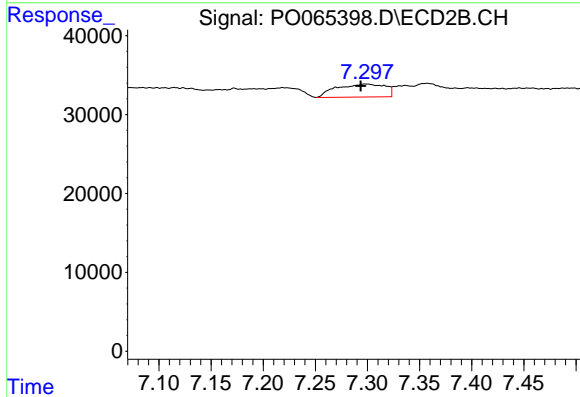
R.T.: 7.848 min  
 Delta R.T.: -0.002 min  
 Response: 23404  
 Conc: 13.72 ng/ml



#41 AR-1268-1

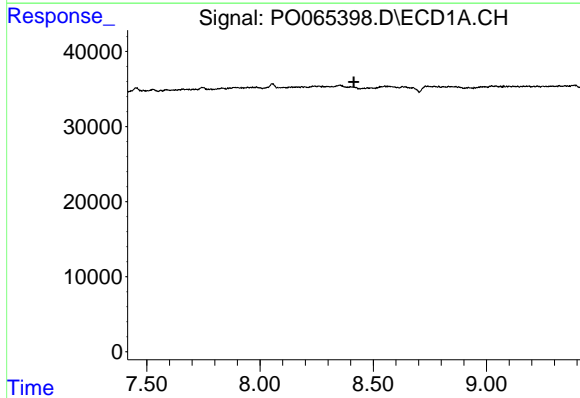
R.T.: 0.000 min  
 Exp R.T.: 8.327 min  
 Response: 0  
 Conc: N.D.

Instrument :  
 ECD\_O  
 ClientSampleId :  
 PB125971BL



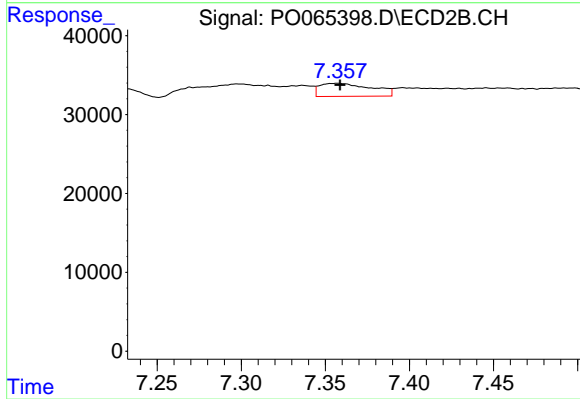
#41 AR-1268-1

R.T.: 7.298 min  
 Delta R.T.: 0.005 min  
 Response: 53528  
 Conc: 10.08 ng/ml



#42 AR-1268-2

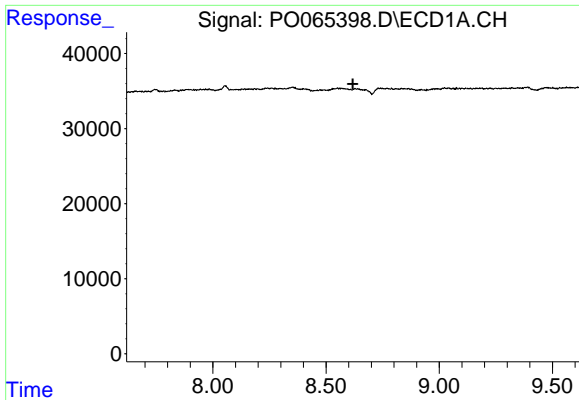
R.T.: 0.000 min  
 Exp R.T.: 8.414 min  
 Response: 0  
 Conc: N.D.



#42 AR-1268-2

R.T.: 7.357 min  
 Delta R.T.: -0.001 min  
 Response: 35479  
 Conc: 6.98 ng/ml

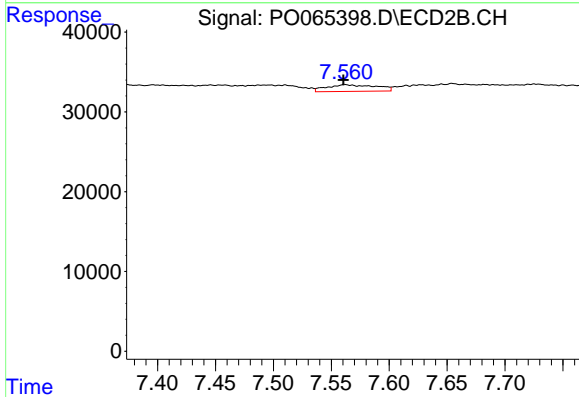




#43 AR-1268-3

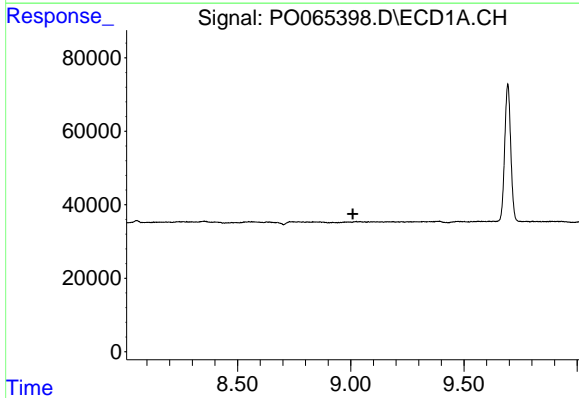
R.T.: 0.000 min  
 Exp R.T. : 8.619 min  
 Response: 0  
 Conc: N.D.

Instrument :  
 ECD\_O  
 ClientSampleId :  
 PB125971BL



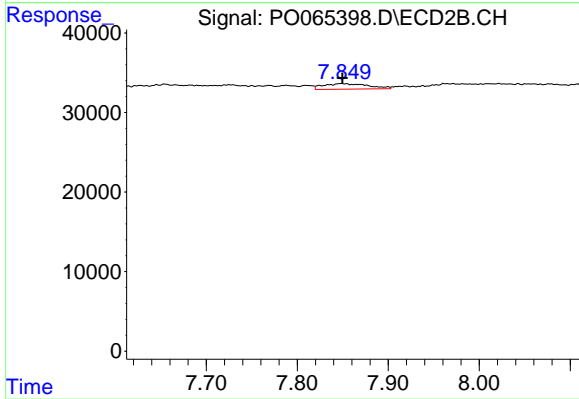
#43 AR-1268-3

R.T.: 7.562 min  
 Delta R.T.: 0.001 min  
 Response: 24923  
 Conc: 5.87 ng/ml



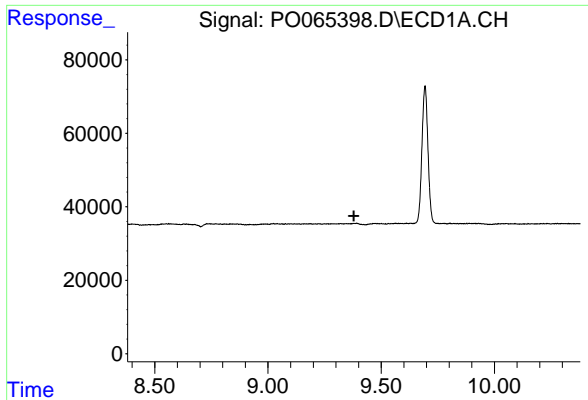
#44 AR-1268-4

R.T.: 0.000 min  
 Exp R.T. : 9.010 min  
 Response: 0  
 Conc: N.D.



#44 AR-1268-4

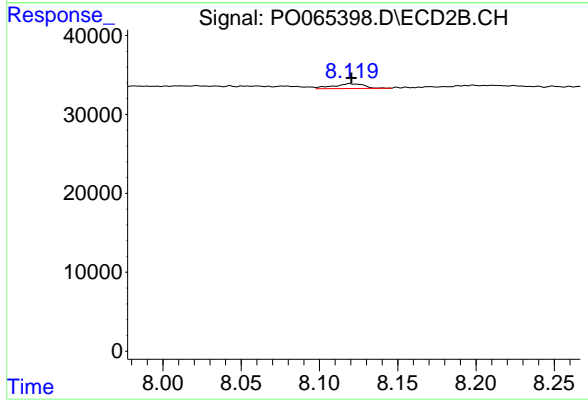
R.T.: 7.848 min  
 Delta R.T.: -0.001 min  
 Response: 23404  
 Conc: 11.82 ng/ml



#45 AR-1268-5

R.T.: 0.000 min  
 Exp R.T.: 9.380 min  
 Response: 0  
 Conc: N.D.

**Instrument :**  
 ECD\_O  
**ClientSampled :**  
 PB125971BL



#45 AR-1268-5

R.T.: 8.120 min  
 Delta R.T.: 0.000 min  
 Response: 8429  
 Conc: 0.59 ng/ml