

Data Path : Z:\pestpcbsrv\HPCHEM1\ECD_0\Data\P0010920\
 Data File : P0065406.D
 Signal(s) : Signal #1: ECD1A.CH Signal #2: ECD2B.CH
 Acq On : 09 Jan 2020 14:32
 Operator : AJ/MA
 Sample : L1060-13
 Misc :
 ALS Vial : 12 Sample Multiplier: 1

Instrument :
 ECD_0
 ClientSampled :
 TP-3

Integration File signal 1: autoint1.e
 Integration File signal 2: autoint2.e
 Quant Time: Jan 09 15:40:29 2020
 Quant Method : Z:\pestpcbsrv\HPCHEM1\ECD_0\methods\P0010420.M
 Quant Title : GC EXTRACTABLES
 QLast Update : Sat Jan 04 04:01:28 2020
 Response via : Initial Calibration
 Integrator: ChemStation 6890 Scale Mode: Small noise peaks clipped

Volume Inj. : 2 µl
 Signal #1 Phase : ZB-MR1 Signal #2 Phase: ZB-MR2
 Signal #1 Info : 30Mx0.32mmx 0.50µ Signal #2 Info : 30M x 0.32mm x 0.25µm

Compound	RT#1	RT#2	Resp#1	Resp#2	ng/ml	ng/ml
System Monitoring Compounds						
1) SA Tetrachlo...	4.166	3.440	522495	621243	28.614	28.242
2) SA Decachlor...	9.668	8.343	547832	585970	16.169	14.130
Target Compounds						
3) L1 AR-1016-1	5.318	4.499	8821	10046	10.114	9.750
4) L1 AR-1016-2	5.337	4.519	26933	13895	20.997	9.589 #
5) L1 AR-1016-3	5.337	4.690	26933	37794	34.184	48.612 #
6) L1 AR-1016-4	5.469	4.732	66008	22101	102.302	33.058 #
7) L1 AR-1016-5	5.786	4.945	-15348	27521	N.D.	32.345 #
8) L2 AR-1221-1	0.000	3.648	0	8376	N.D.	32.307 #
9) L2 AR-1221-2	4.466	3.732	8561	16265	54.828	82.490 #
10) L2 AR-1221-3	4.466	3.806	8561	5964	16.393	9.256 #
11) L3 AR-1232-1	4.466	3.806	8561	5964	21.165	11.971 #
12) L3 AR-1232-2	5.026	4.519	98747	13895	469.570	25.768 #
13) L3 AR-1232-3	5.337	4.690	26933	37794	57.677	132.860 #
14) L3 AR-1232-4	5.469	4.773	66008	13627	282.924	50.973 #
15) L3 AR-1232-5	5.585	4.945	25260	27521	142.874	95.997 #
16) L4 AR-1242-1	5.318	4.499	8821	10046	15.152	14.739
17) L4 AR-1242-2	5.337	4.519	26933	13895	31.497	14.500 #
18) L4 AR-1242-3	5.337	4.690	26933	37794	51.360	73.735 #
19) L4 AR-1242-4	5.469	4.773	66008	13627	155.805	26.072 #
20) L4 AR-1242-5	6.227	5.291	120290	407425	220.903	560.576 #
21) L5 AR-1248-1	5.318	4.499	8821	10046	18.958	18.122
22) L5 AR-1248-2	5.585	4.732	25260	22101	38.282	28.806
24) L5 AR-1248-4	6.162	4.945	377150	27521	398.145	28.712 #
25) L5 AR-1248-5	6.227	5.330	120290	73634	131.503	72.740 #
26) L6 AR-1254-1	6.162	5.291	377150	407425	444.580	281.233 #
27) L6 AR-1254-2	6.375	5.458	3567805	4170351	2596.255	3152.834
28) L6 AR-1254-3	6.750	5.851	3261600	4121077	2104.400	1828.729
29) L6 AR-1254-4	7.020	6.058	115474	134718	90.588	89.360
30) L6 AR-1254-5	7.434	6.471	699574	826379	498.158	371.250 #
31) L7 AR-1260-1	6.898	5.960	418816	558003	303.659	296.392
32) L7 AR-1260-2	7.149	6.147	5814744	642057	3314.143	264.276 #
33) L7 AR-1260-3	7.509	6.298	357930	563895	253.240	260.519
34) L7 AR-1260-4	7.732	6.765	465204	410708	266.428	204.717
35) L7 AR-1260-5	8.037	7.006	801295	1053786	238.937	212.865
36) L8 AR-1262-1	7.509	6.562	357930	288254	216.369	305.759 #
37) L8 AR-1262-2	8.037	7.006	801295	1053786	250.219	234.523
38) L8 AR-1262-3	8.335	7.287	543029	254866	238.545	151.431 #
39) L8 AR-1262-4	8.388	7.350	307204	756889	173.787	220.090 #
40) L8 AR-1262-5	9.001	7.842	208316	250186	156.597	146.718
41) L9 AR-1268-1	8.335	7.287	543029	254866	133.481	47.989 #
42) L9 AR-1268-2	8.388	7.350	307204	756889	79.822	149.008 #

Data Path : Z:\pestpcbsrv\HPCHEM1\ECD_0\Data\P0010920\
 Data File : P0065406.D
 Signal(s) : Signal #1: ECD1A.CH Signal #2: ECD2B.CH
 Acq On : 09 Jan 2020 14:32
 Operator : AJ/MA
 Sample : L1060-13
 Misc :
 ALS Vial : 12 Sample Multiplier: 1

Instrument :
 ECD_0
 ClientSampleId :
 TP-3

Integration File signal 1: autoint1.e
 Integration File signal 2: autoint2.e
 Quant Time: Jan 09 15:40:29 2020
 Quant Method : Z:\pestpcbsrv\HPCHEM1\ECD_0\methods\P0010420.M
 Quant Title : GC EXTRACTABLES
 QLast Update : Sat Jan 04 04:01:28 2020
 Response via : Initial Calibration
 Integrator: ChemStation 6890 Scale Mode: Small noise peaks clipped

Volume Inj. : 2 µl
 Signal #1 Phase : ZB-MR1 Signal #2 Phase: ZB-MR2
 Signal #1 Info : 30Mx0.32mmx 0.50µ Signal #2 Info : 30M x 0.32mm x 0.25µm

	Compound	RT#1	RT#2	Resp#1	Resp#2	ng/ml	ng/ml
43)	L9 AR-1268-3	8.610	7.550	24036	65172	7.468	15.342 #
44)	L9 AR-1268-4	9.001	7.842	208316	250186	135.616	126.405
45)	L9 AR-1268-5	9.370	8.112	99309	105947	8.963	7.369

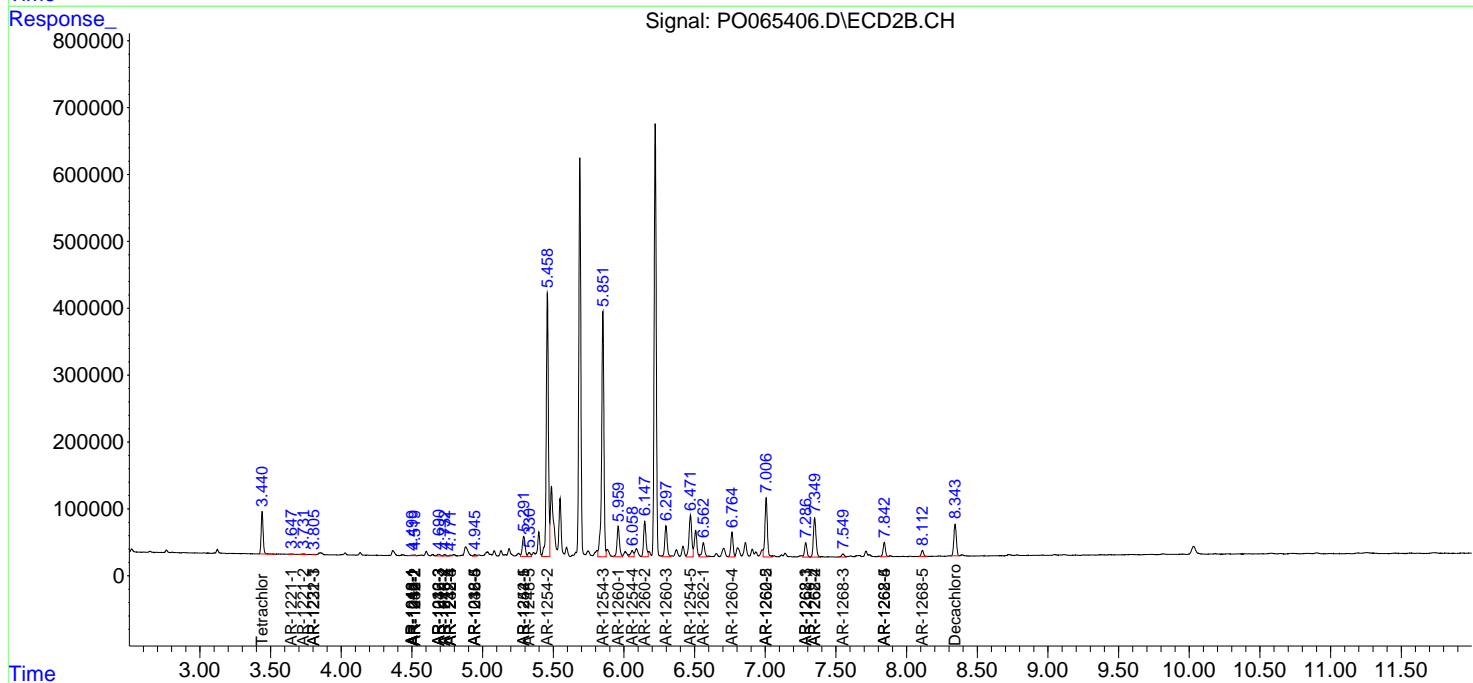
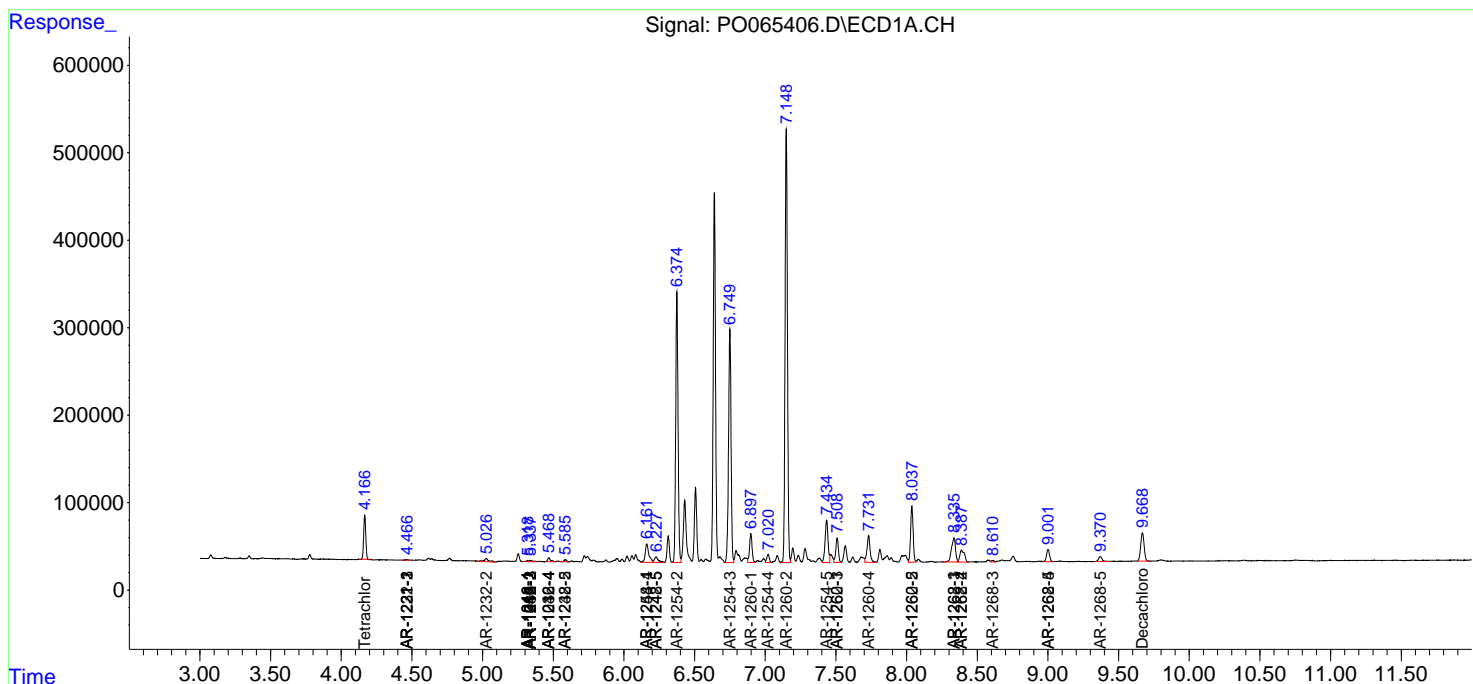
(f)=RT Delta > 1/2 Window (#)=Amounts differ by > 25% (m)=manual int.

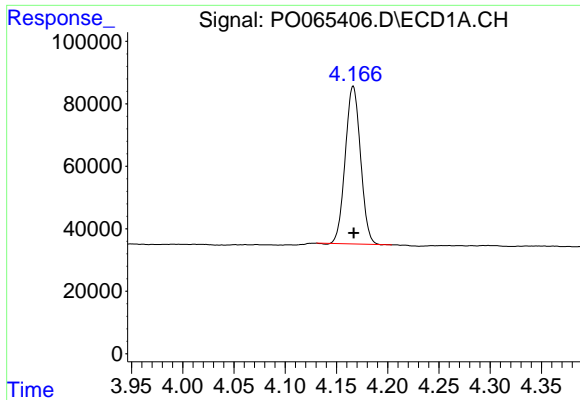
Data Path : Z:\pestpcbsrv\HPCHEM1\ECD_O\Data\P0010920\
 Data File : P0065406.D
 Signal(s) : Signal #1: ECD1A.CH Signal #2: ECD2B.CH
 Acq On : 09 Jan 2020 14:32
 Operator : AJ/MA
 Sample : L1060-13
 Misc :
 ALS Vial : 12 Sample Multiplier: 1

Instrument :
 ECD_O
 ClientSampled :
 TP-3

Integration File signal 1: autoint1.e
 Integration File signal 2: autoint2.e
 Quant Time: Jan 09 15:40:29 2020
 Quant Method : Z:\pestpcbsrv\HPCHEM1\ECD_O\methods\P0010420.M
 Quant Title : GC EXTRACTABLES
 QLast Update : Sat Jan 04 04:01:28 2020
 Response via : Initial Calibration
 Integrator: ChemStation 6890 Scale Mode: Small noise peaks clipped

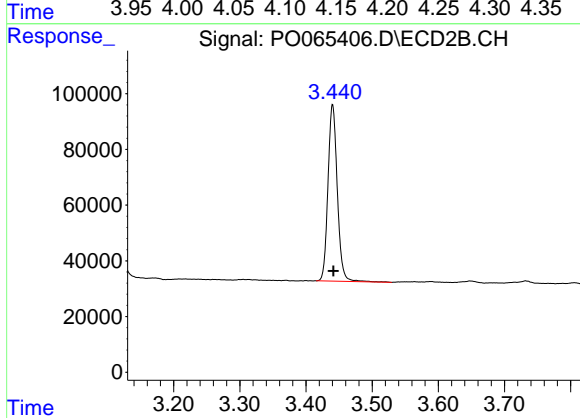
Volume Inj. : 2 µl
 Signal #1 Phase : ZB-MR1 Signal #2 Phase: ZB-MR2
 Signal #1 Info : 30Mx0.32mmx 0.50µ Signal #2 Info : 30M x 0.32mm x 0.25µm



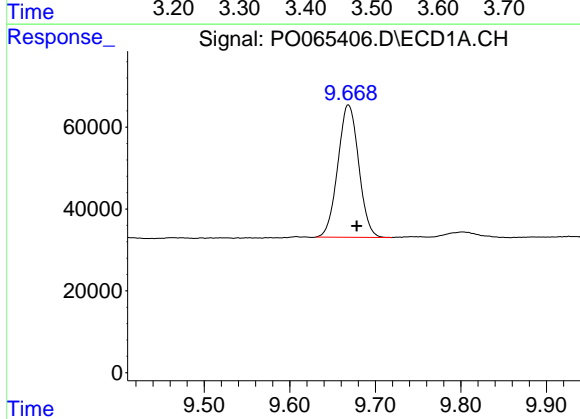


#1 Tetrachloro-m-xylene
 R.T.: 4.166 min
 Delta R.T.: 0.000 min
 Response: 522495
 Conc: 28.61 ng/ml

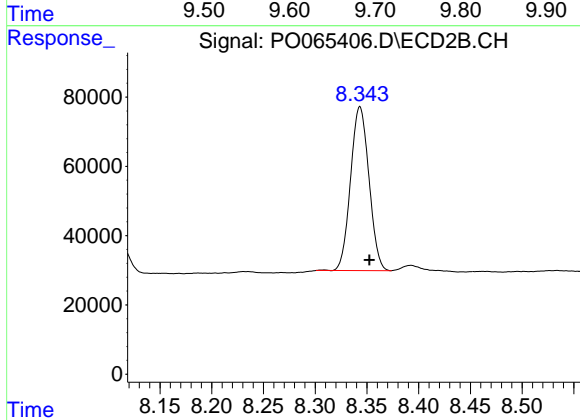
Instrument :
 ECD_O
 ClientSampled :
 TP-3



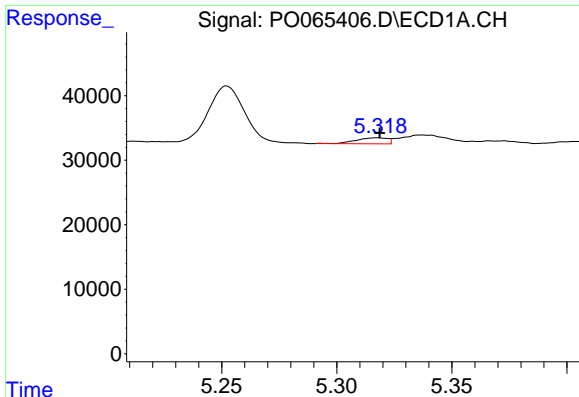
#1 Tetrachloro-m-xylene
 R.T.: 3.440 min
 Delta R.T.: 0.000 min
 Response: 621243
 Conc: 28.24 ng/ml



#2 Decachlorobiphenyl
 R.T.: 9.668 min
 Delta R.T.: -0.010 min
 Response: 547832
 Conc: 16.17 ng/ml



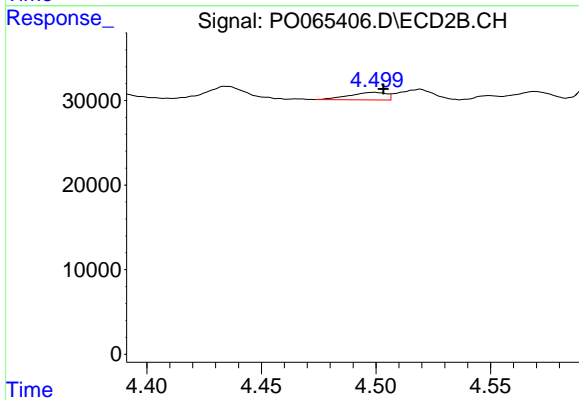
#2 Decachlorobiphenyl
 R.T.: 8.343 min
 Delta R.T.: -0.009 min
 Response: 585970
 Conc: 14.13 ng/ml



#3 AR-1016-1

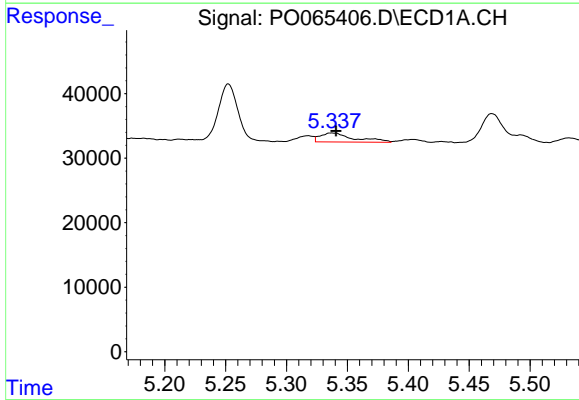
R.T.: 5.318 min
 Delta R.T.: 0.000 min
 Response: 8821
 Conc: 10.11 ng/ml

Instrument :
 ECD_O
 ClientSampled :
 TP-3



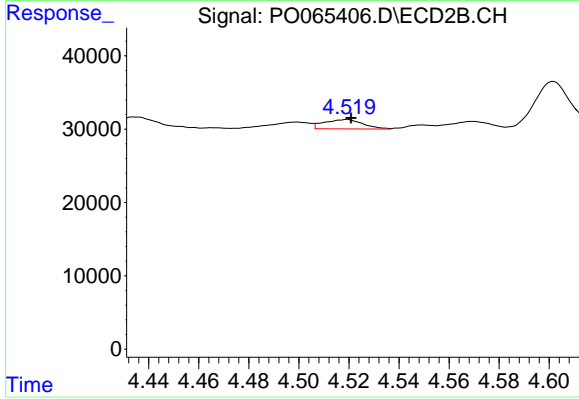
#3 AR-1016-1

R.T.: 4.499 min
 Delta R.T.: -0.004 min
 Response: 10046
 Conc: 9.75 ng/ml



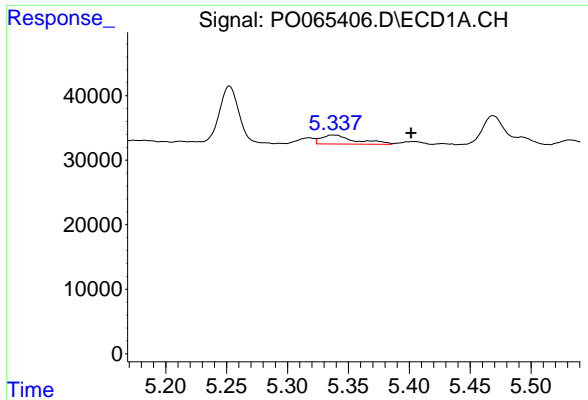
#4 AR-1016-2

R.T.: 5.337 min
 Delta R.T.: -0.003 min
 Response: 26933
 Conc: 21.00 ng/ml



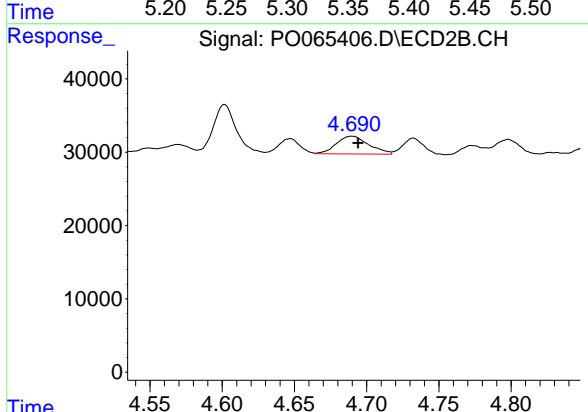
#4 AR-1016-2

R.T.: 4.519 min
 Delta R.T.: -0.002 min
 Response: 13895
 Conc: 9.59 ng/ml

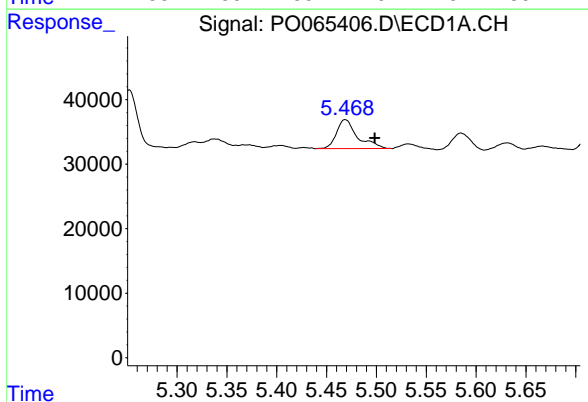


#5 AR-1016-3
 R.T.: 5.337 min
 Delta R.T.: -0.064 min
 Response: 26933
 Conc: 34.18 ng/ml

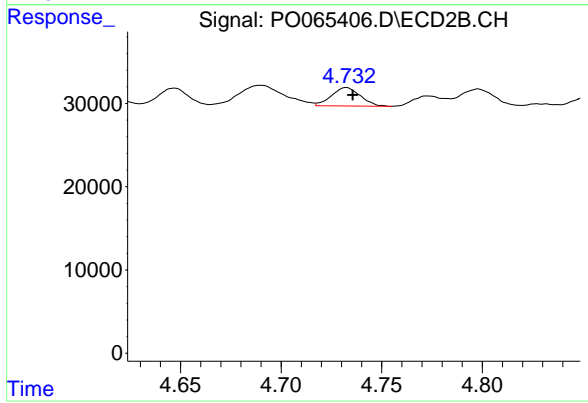
Instrument :
 ECD_O
 ClientSampled :
 TP-3



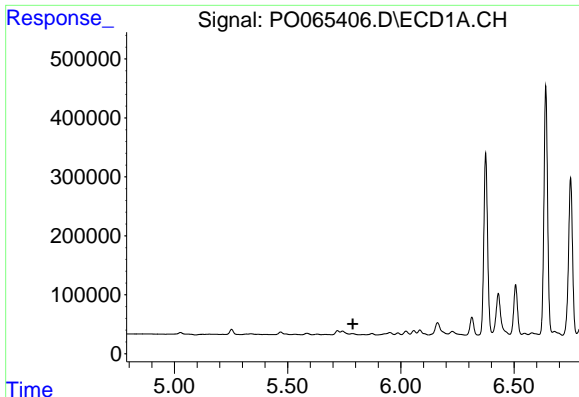
#5 AR-1016-3
 R.T.: 4.690 min
 Delta R.T.: -0.004 min
 Response: 37794
 Conc: 48.61 ng/ml



#6 AR-1016-4
 R.T.: 5.469 min
 Delta R.T.: -0.030 min
 Response: 66008
 Conc: 102.30 ng/ml



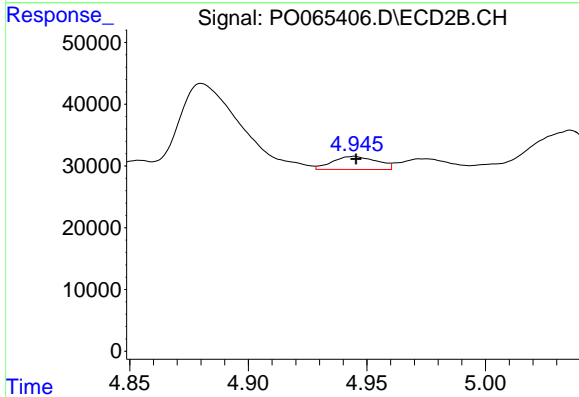
#6 AR-1016-4
 R.T.: 4.732 min
 Delta R.T.: -0.003 min
 Response: 22101
 Conc: 33.06 ng/ml



#7 AR-1016-5

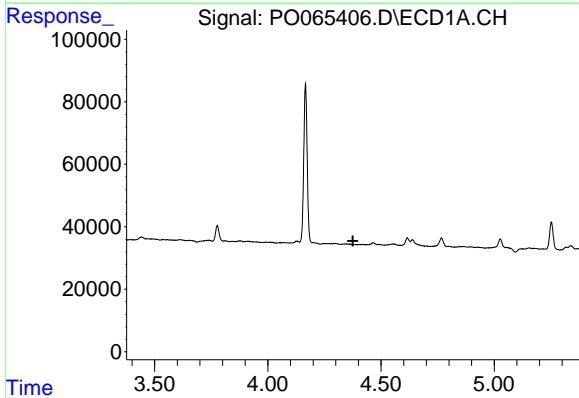
R.T.: 5.786 min
 Delta R.T.: -0.003 min
 Response: -15348
 Conc: N.D.

Instrument :
 ECD_O
 ClientSampled :
 TP-3



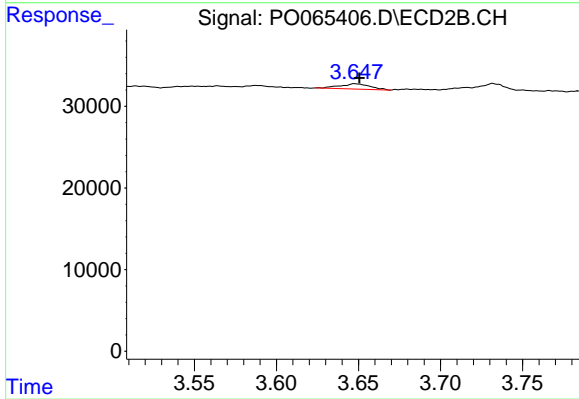
#7 AR-1016-5

R.T.: 4.945 min
 Delta R.T.: 0.000 min
 Response: 27521
 Conc: 32.34 ng/ml



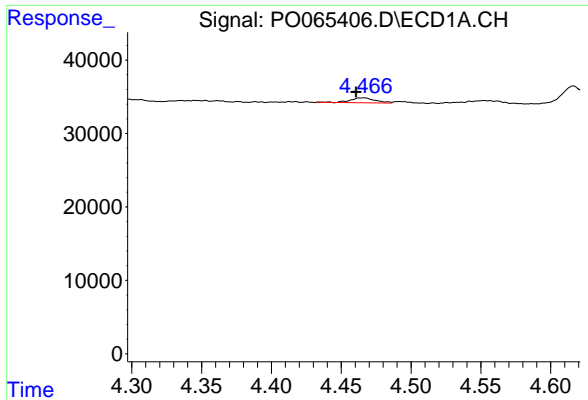
#8 AR-1221-1

R.T.: 0.000 min
 Exp R.T. : 4.375 min
 Response: 0
 Conc: N.D.



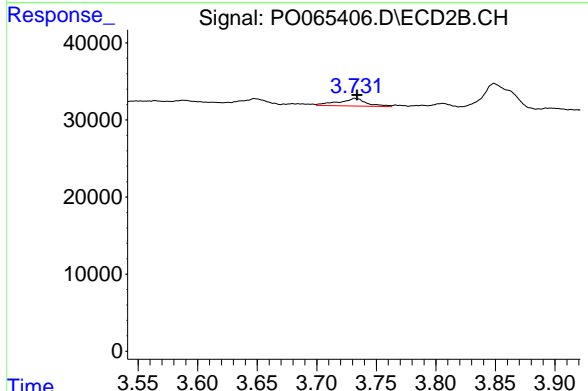
#8 AR-1221-1

R.T.: 3.648 min
 Delta R.T.: -0.002 min
 Response: 8376
 Conc: 32.31 ng/ml

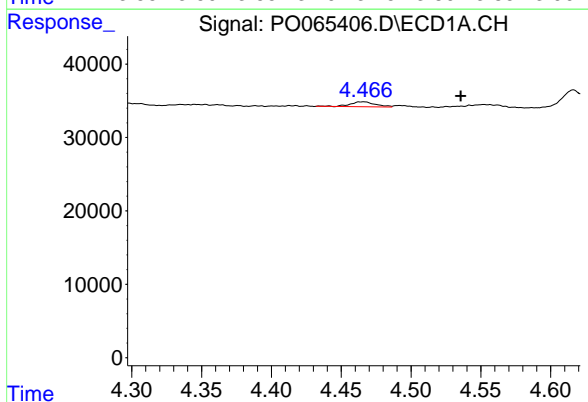


#9 AR-1221-2
 R.T.: 4.466 min
 Delta R.T.: 0.005 min
 Response: 8561
 Conc: 54.83 ng/ml

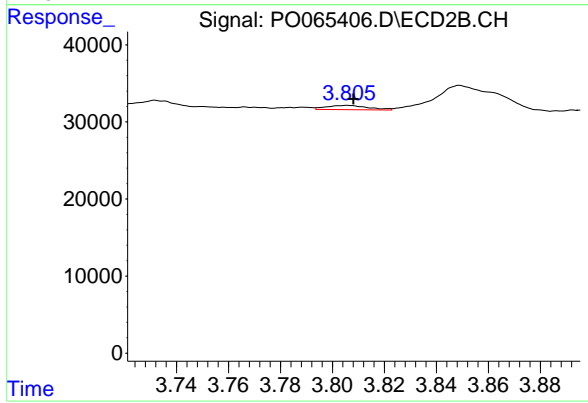
Instrument :
 ECD_O
 ClientSampleId :
 TP-3



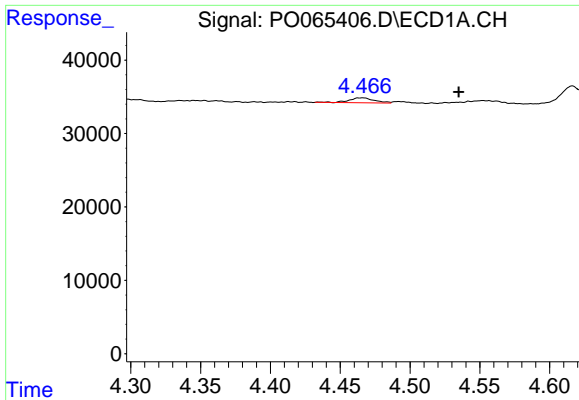
#9 AR-1221-2
 R.T.: 3.732 min
 Delta R.T.: -0.002 min
 Response: 16265
 Conc: 82.49 ng/ml



#10 AR-1221-3
 R.T.: 4.466 min
 Delta R.T.: -0.070 min
 Response: 8561
 Conc: 16.39 ng/ml



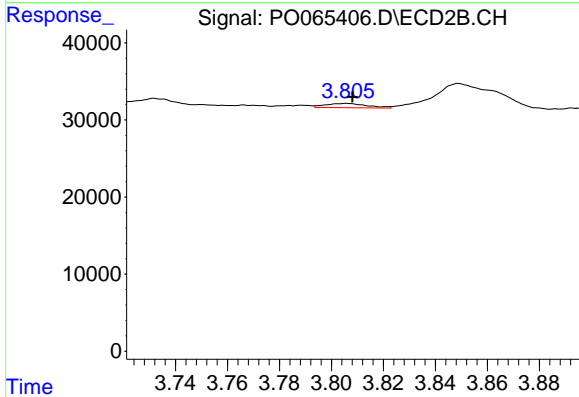
#10 AR-1221-3
 R.T.: 3.806 min
 Delta R.T.: -0.002 min
 Response: 5964
 Conc: 9.26 ng/ml



#11 AR-1232-1

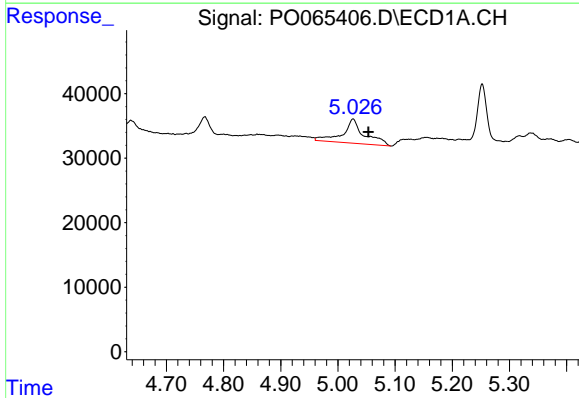
R.T.: 4.466 min
 Delta R.T.: -0.069 min
 Response: 8561
 Conc: 21.17 ng/ml

Instrument :
 ECD_O
 ClientSampled :
 TP-3



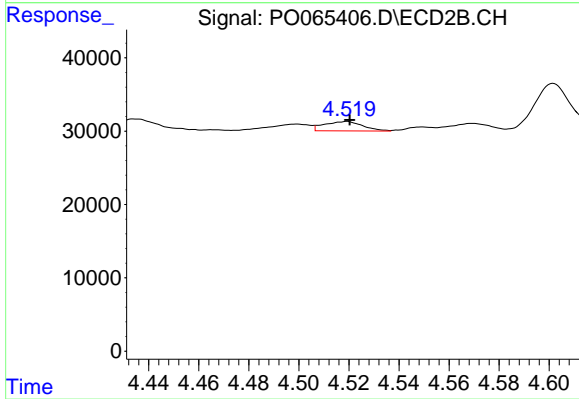
#11 AR-1232-1

R.T.: 3.806 min
 Delta R.T.: -0.002 min
 Response: 5964
 Conc: 11.97 ng/ml



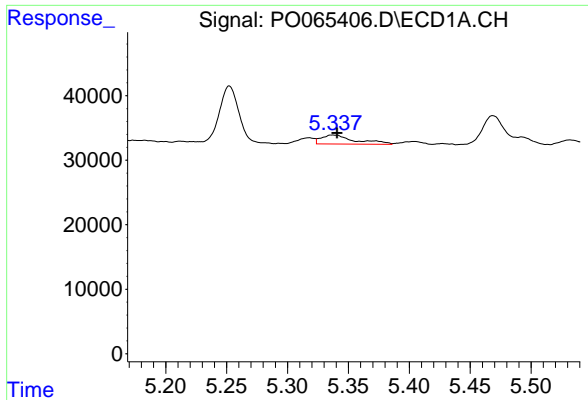
#12 AR-1232-2

R.T.: 5.026 min
 Delta R.T.: -0.027 min
 Response: 98747
 Conc: 469.57 ng/ml



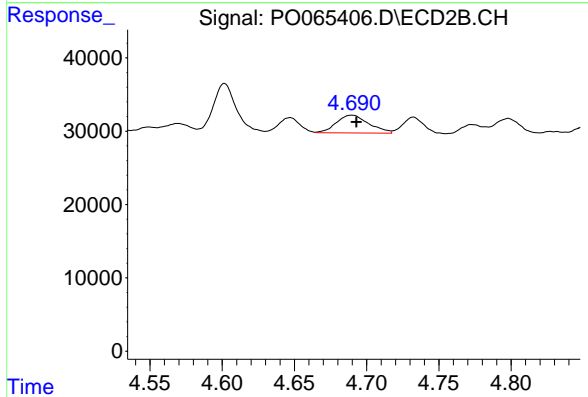
#12 AR-1232-2

R.T.: 4.519 min
 Delta R.T.: -0.001 min
 Response: 13895
 Conc: 25.77 ng/ml

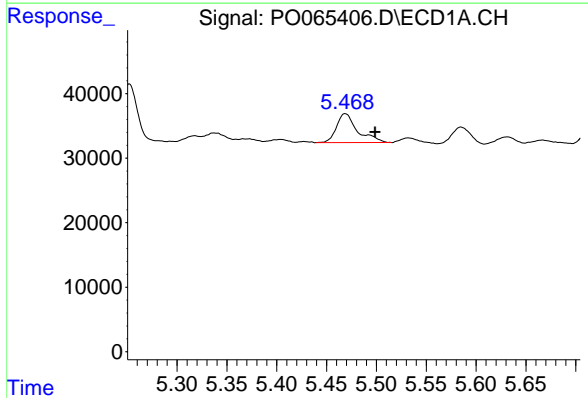


#13 AR-1232-3
 R.T.: 5.337 min
 Delta R.T.: -0.003 min
 Response: 26933
 Conc: 57.68 ng/ml

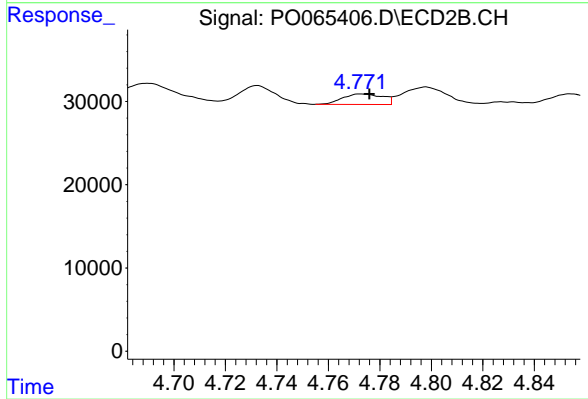
Instrument :
 ECD_O
 ClientSampled :
 TP-3



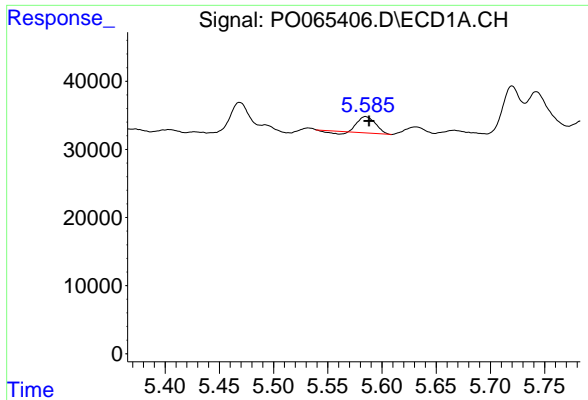
#13 AR-1232-3
 R.T.: 4.690 min
 Delta R.T.: -0.003 min
 Response: 37794
 Conc: 132.86 ng/ml



#14 AR-1232-4
 R.T.: 5.469 min
 Delta R.T.: -0.030 min
 Response: 66008
 Conc: 282.92 ng/ml



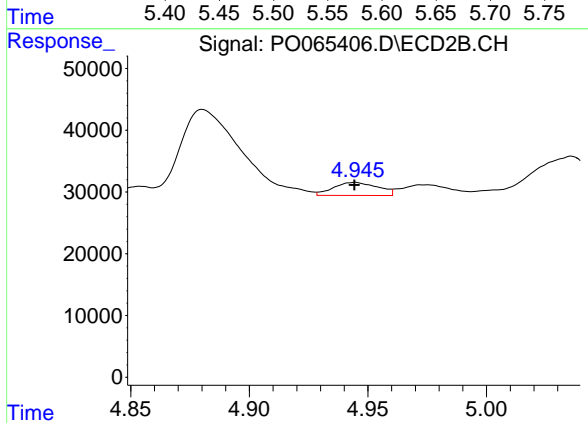
#14 AR-1232-4
 R.T.: 4.773 min
 Delta R.T.: -0.003 min
 Response: 13627
 Conc: 50.97 ng/ml



#15 AR-1232-5

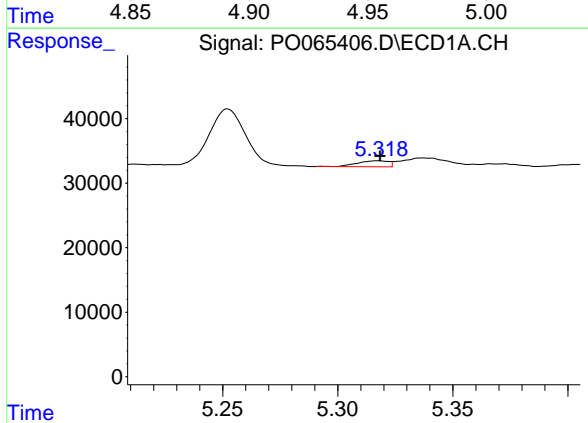
R.T.: 5.585 min
 Delta R.T.: -0.003 min
 Response: 25260
 Conc: 142.87 ng/ml

Instrument :
 ECD_O
 ClientSampleId :
 TP-3



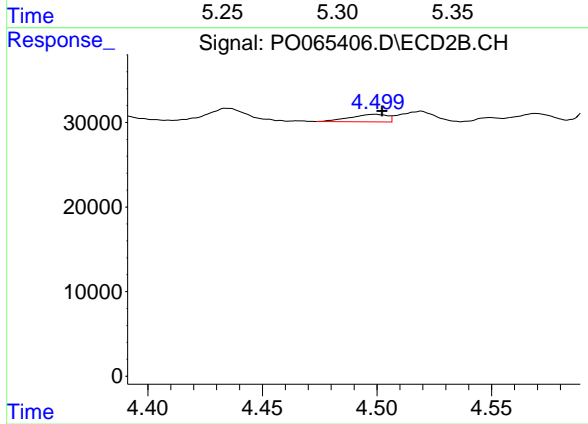
#15 AR-1232-5

R.T.: 4.945 min
 Delta R.T.: 0.000 min
 Response: 27521
 Conc: 96.00 ng/ml



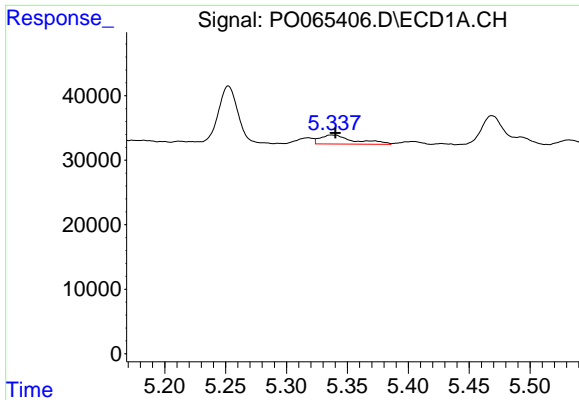
#16 AR-1242-1

R.T.: 5.318 min
 Delta R.T.: 0.000 min
 Response: 8821
 Conc: 15.15 ng/ml



#16 AR-1242-1

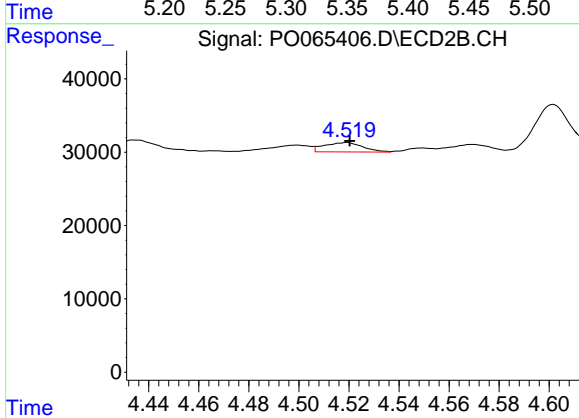
R.T.: 4.499 min
 Delta R.T.: -0.003 min
 Response: 10046
 Conc: 14.74 ng/ml



#17 AR-1242-2

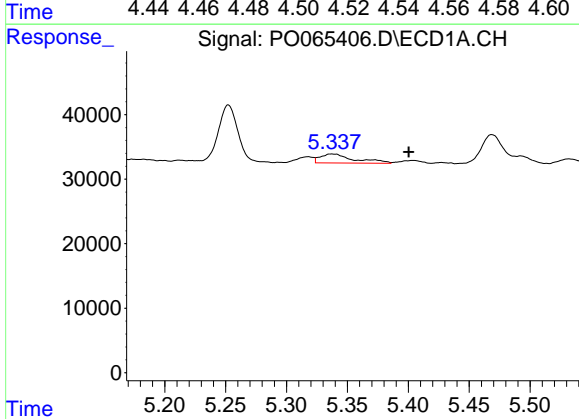
R.T.: 5.337 min
 Delta R.T.: -0.003 min
 Response: 26933
 Conc: 31.50 ng/ml

Instrument :
 ECD_O
 ClientSampleId :
 TP-3



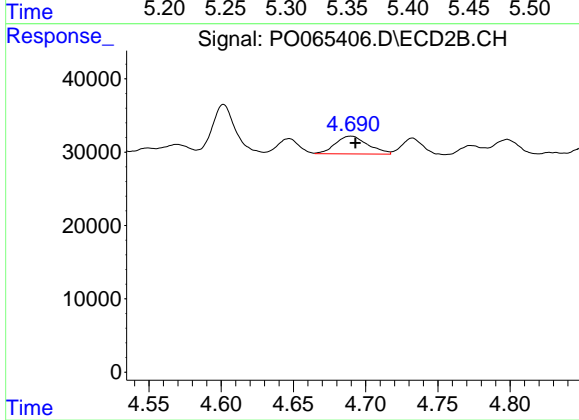
#17 AR-1242-2

R.T.: 4.519 min
 Delta R.T.: -0.001 min
 Response: 13895
 Conc: 14.50 ng/ml



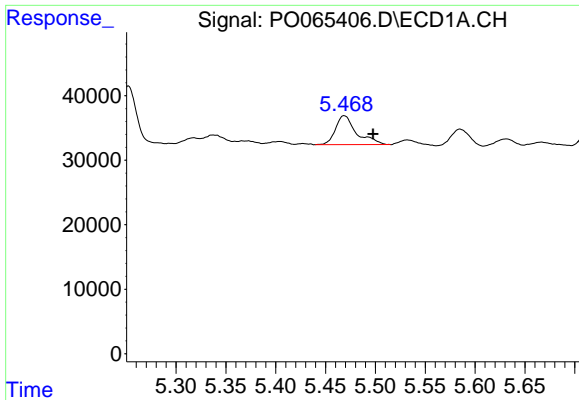
#18 AR-1242-3

R.T.: 5.337 min
 Delta R.T.: -0.063 min
 Response: 26933
 Conc: 51.36 ng/ml



#18 AR-1242-3

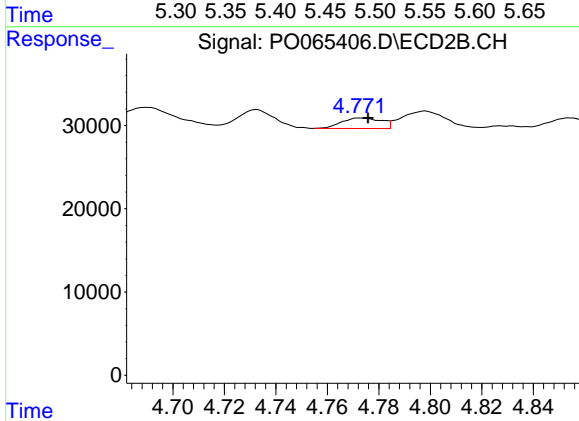
R.T.: 4.690 min
 Delta R.T.: -0.003 min
 Response: 37794
 Conc: 73.73 ng/ml



#19 AR-1242-4

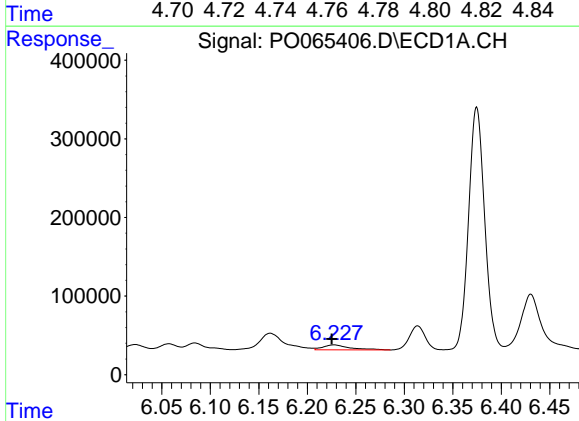
R.T.: 5.469 min
 Delta R.T.: -0.029 min
 Response: 66008
 Conc: 155.81 ng/ml

Instrument :
 ECD_O
 ClientSampled :
 TP-3



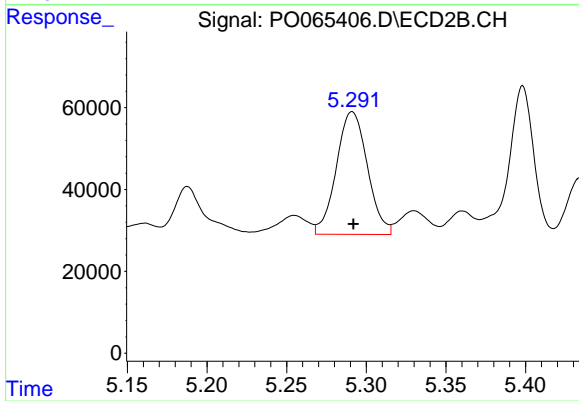
#19 AR-1242-4

R.T.: 4.773 min
 Delta R.T.: -0.003 min
 Response: 13627
 Conc: 26.07 ng/ml



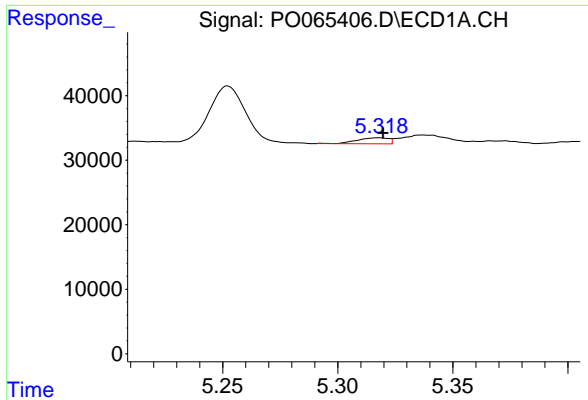
#20 AR-1242-5

R.T.: 6.227 min
 Delta R.T.: 0.002 min
 Response: 120290
 Conc: 220.90 ng/ml



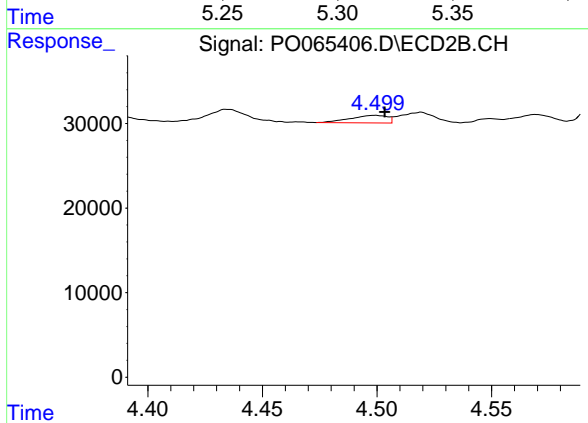
#20 AR-1242-5

R.T.: 5.291 min
 Delta R.T.: 0.000 min
 Response: 407425
 Conc: 560.58 ng/ml

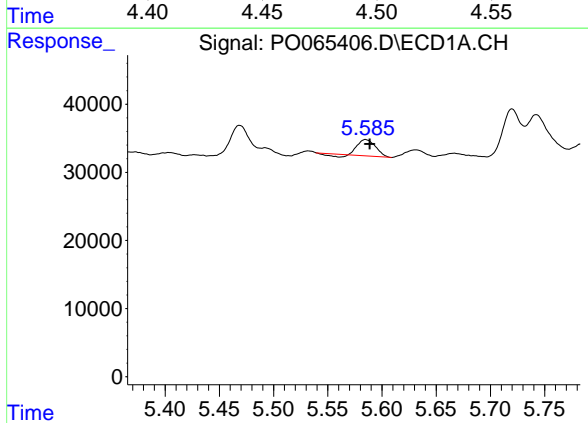


#21 AR-1248-1
 R.T.: 5.318 min
 Delta R.T.: -0.002 min
 Response: 8821
 Conc: 18.96 ng/ml

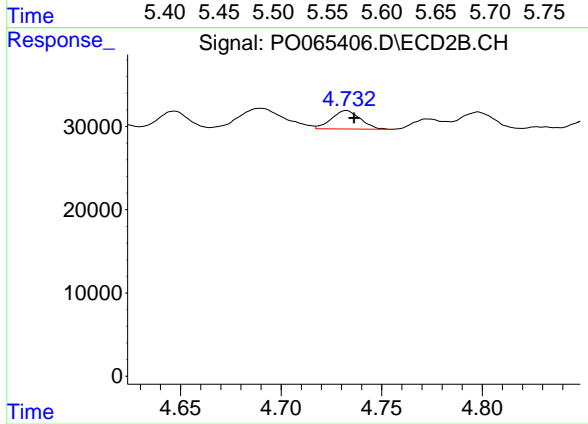
Instrument :
 ECD_O
 ClientSampleId :
 TP-3



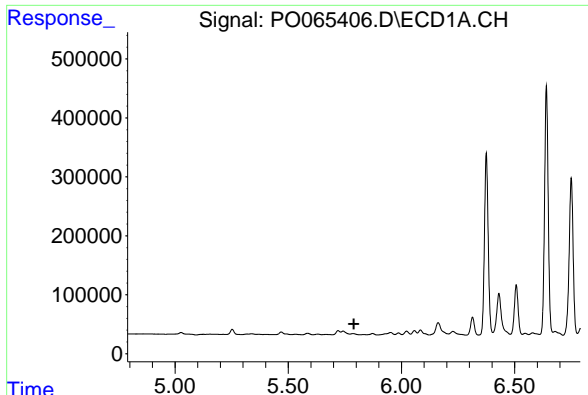
#21 AR-1248-1
 R.T.: 4.499 min
 Delta R.T.: -0.004 min
 Response: 10046
 Conc: 18.12 ng/ml



#22 AR-1248-2
 R.T.: 5.585 min
 Delta R.T.: -0.004 min
 Response: 25260
 Conc: 38.28 ng/ml



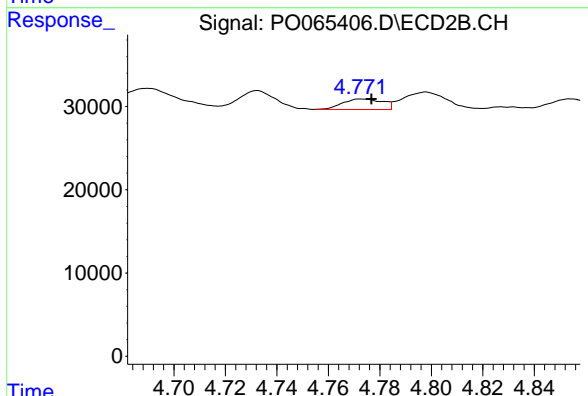
#22 AR-1248-2
 R.T.: 4.732 min
 Delta R.T.: -0.004 min
 Response: 22101
 Conc: 28.81 ng/ml



#23 AR-1248-3

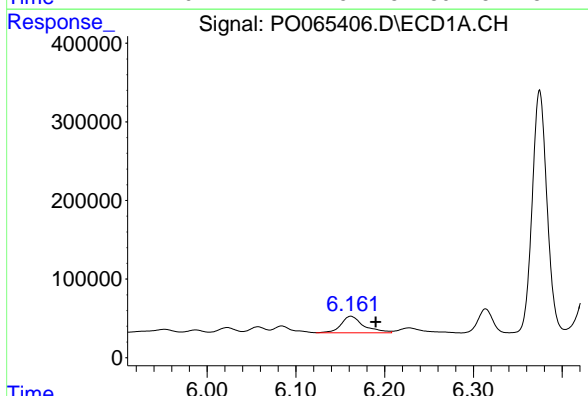
R.T.: 5.786 min
 Delta R.T.: -0.004 min
 Response: -15348
 Conc: N.D.

Instrument :
 ECD_O
 ClientSampleId :
 TP-3



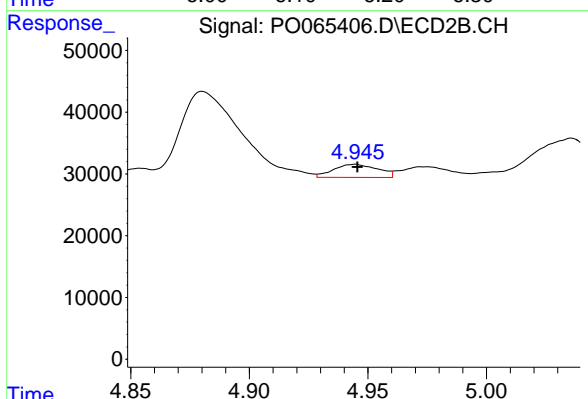
#23 AR-1248-3

R.T.: 4.773 min
 Delta R.T.: -0.004 min
 Response: 13627
 Conc: 17.32 ng/ml



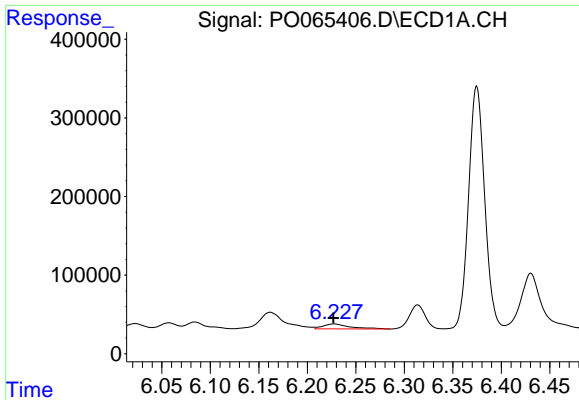
#24 AR-1248-4

R.T.: 6.162 min
 Delta R.T.: -0.028 min
 Response: 377150
 Conc: 398.15 ng/ml



#24 AR-1248-4

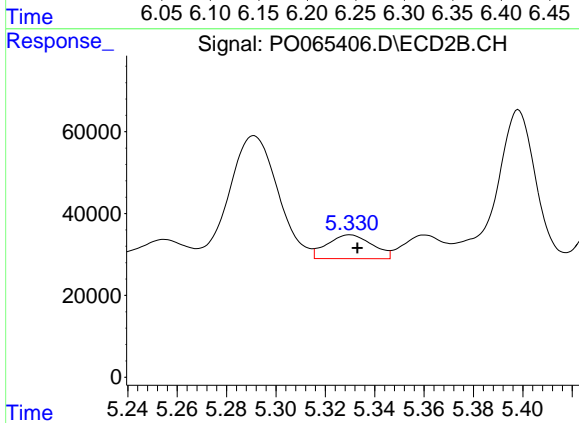
R.T.: 4.945 min
 Delta R.T.: -0.001 min
 Response: 27521
 Conc: 28.71 ng/ml



#25 AR-1248-5

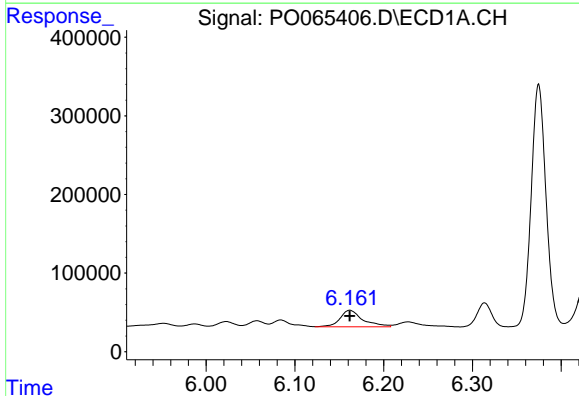
R.T.: 6.227 min
 Delta R.T.: 0.000 min
 Response: 120290
 Conc: 131.50 ng/ml

Instrument :
 ECD_O
 ClientSampleId :
 TP-3



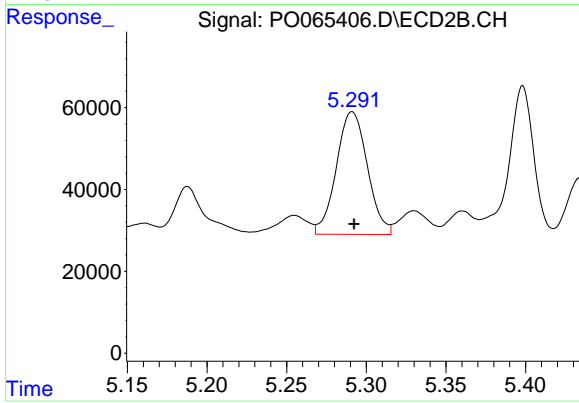
#25 AR-1248-5

R.T.: 5.330 min
 Delta R.T.: -0.003 min
 Response: 73634
 Conc: 72.74 ng/ml



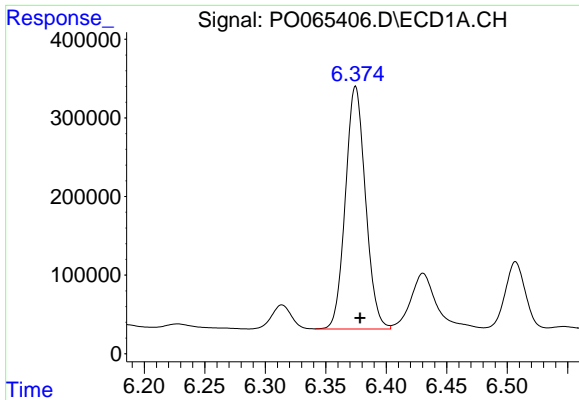
#26 AR-1254-1

R.T.: 6.162 min
 Delta R.T.: 0.000 min
 Response: 377150
 Conc: 444.58 ng/ml



#26 AR-1254-1

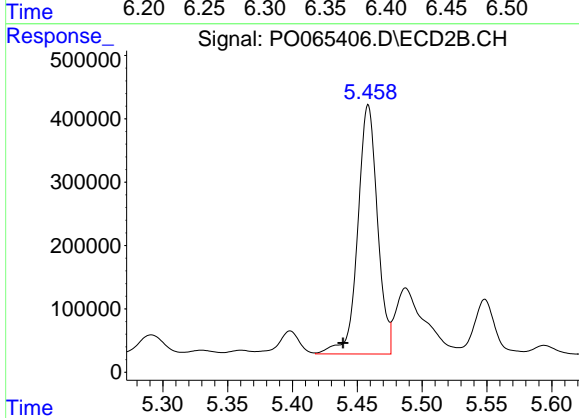
R.T.: 5.291 min
 Delta R.T.: -0.001 min
 Response: 407425
 Conc: 281.23 ng/ml



#27 AR-1254-2

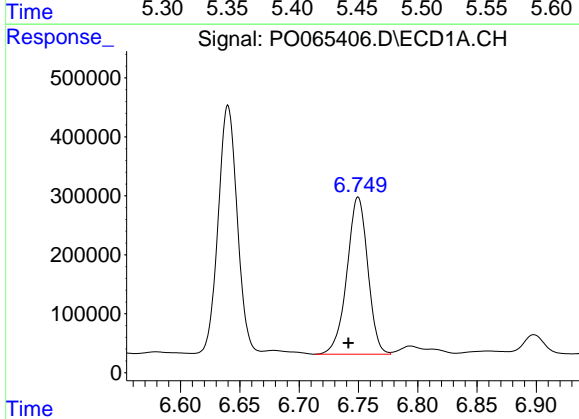
R.T.: 6.375 min
 Delta R.T.: -0.004 min
 Response: 3567805
 Conc: 2596.25 ng/ml

Instrument :
 ECD_O
 ClientSampled :
 TP-3



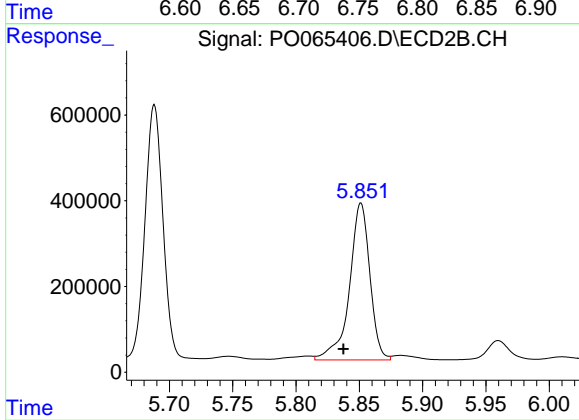
#27 AR-1254-2

R.T.: 5.458 min
 Delta R.T.: 0.019 min
 Response: 4170351
 Conc: 3152.83 ng/ml



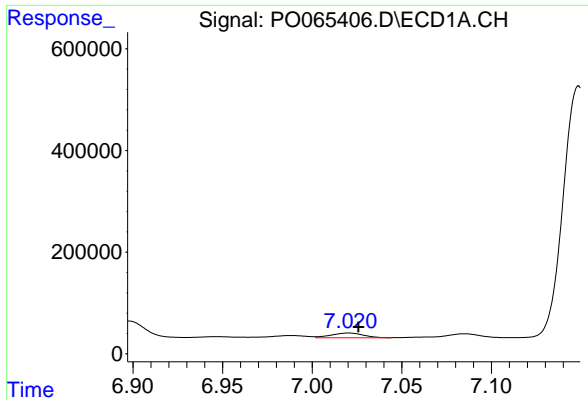
#28 AR-1254-3

R.T.: 6.750 min
 Delta R.T.: 0.008 min
 Response: 3261600
 Conc: 2104.40 ng/ml



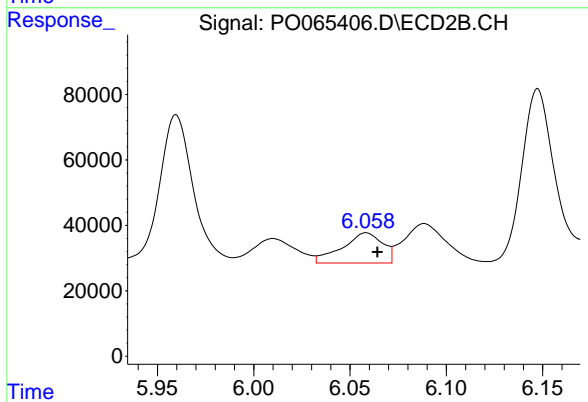
#28 AR-1254-3

R.T.: 5.851 min
 Delta R.T.: 0.014 min
 Response: 4121077
 Conc: 1828.73 ng/ml

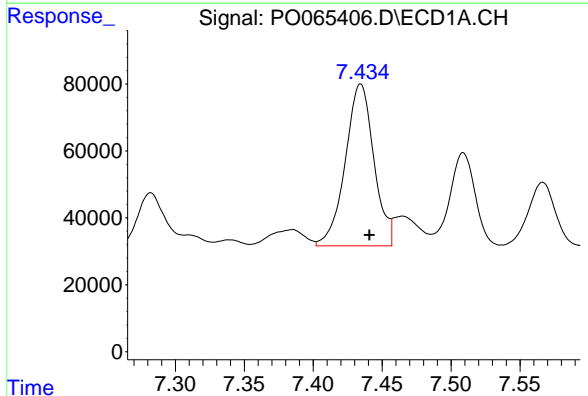


#29 AR-1254-4
 R.T.: 7.020 min
 Delta R.T.: -0.005 min
 Response: 115474
 Conc: 90.59 ng/ml

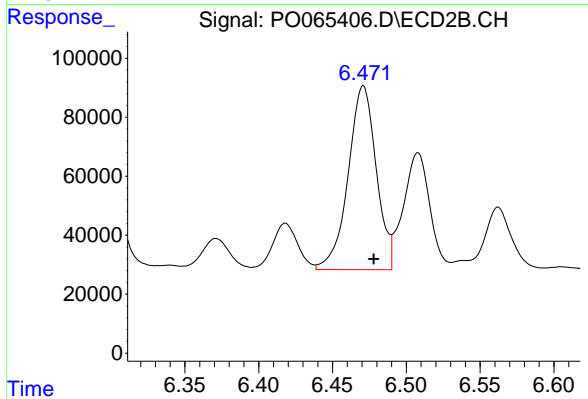
Instrument :
 ECD_O
 ClientSampled :
 TP-3



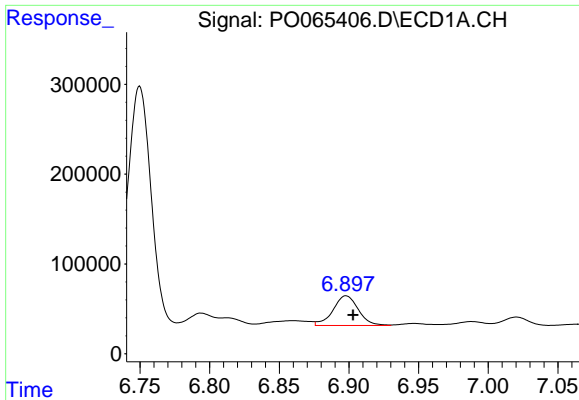
#29 AR-1254-4
 R.T.: 6.058 min
 Delta R.T.: -0.006 min
 Response: 134718
 Conc: 89.36 ng/ml



#30 AR-1254-5
 R.T.: 7.434 min
 Delta R.T.: -0.006 min
 Response: 699574
 Conc: 498.16 ng/ml



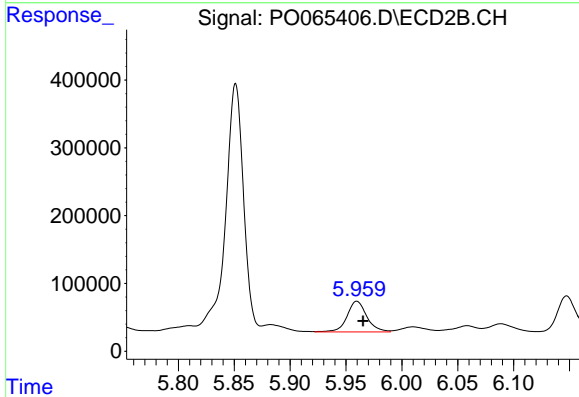
#30 AR-1254-5
 R.T.: 6.471 min
 Delta R.T.: -0.007 min
 Response: 826379
 Conc: 371.25 ng/ml



#31 AR-1260-1

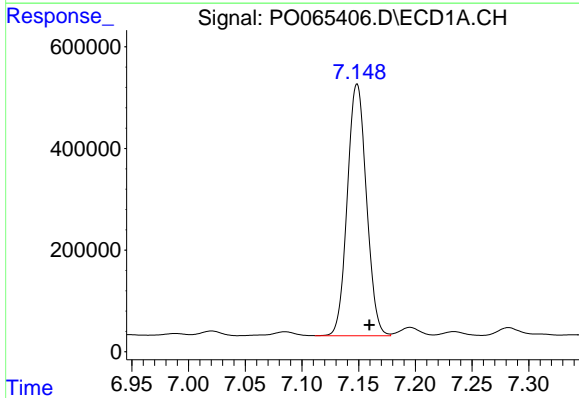
R.T.: 6.898 min
 Delta R.T.: -0.005 min
 Response: 418816
 Conc: 303.66 ng/ml

Instrument :
 ECD_O
 ClientSampleId :
 TP-3



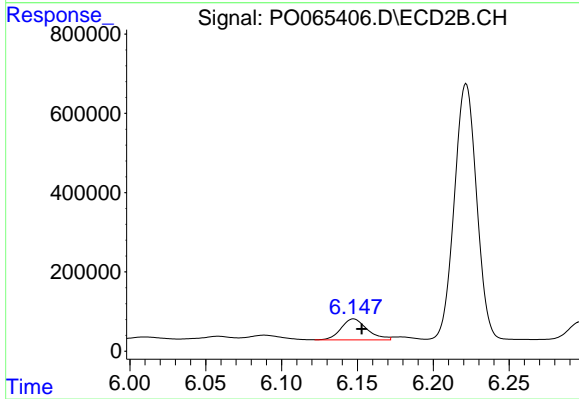
#31 AR-1260-1

R.T.: 5.960 min
 Delta R.T.: -0.006 min
 Response: 558003
 Conc: 296.39 ng/ml



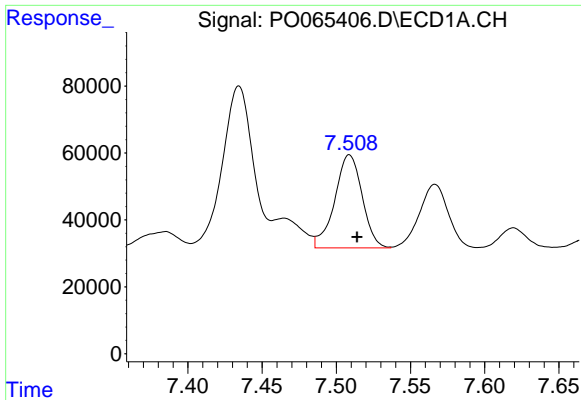
#32 AR-1260-2

R.T.: 7.149 min
 Delta R.T.: -0.011 min
 Response: 5814744
 Conc: 3314.14 ng/ml



#32 AR-1260-2

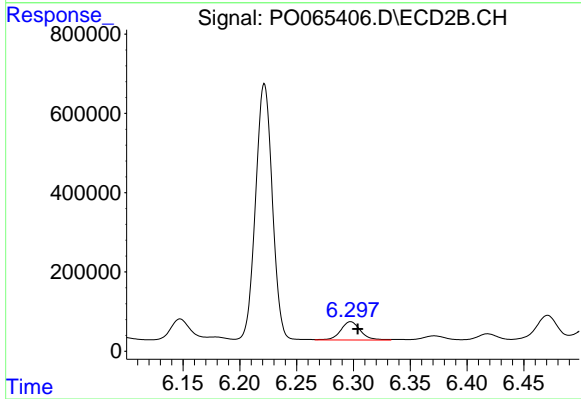
R.T.: 6.147 min
 Delta R.T.: -0.005 min
 Response: 642057
 Conc: 264.28 ng/ml



#33 AR-1260-3

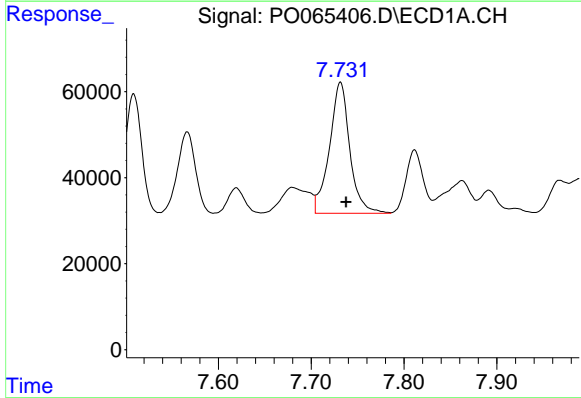
R.T.: 7.509 min
 Delta R.T.: -0.005 min
 Response: 357930
 Conc: 253.24 ng/ml

Instrument :
 ECD_O
 ClientSampleId :
 TP-3



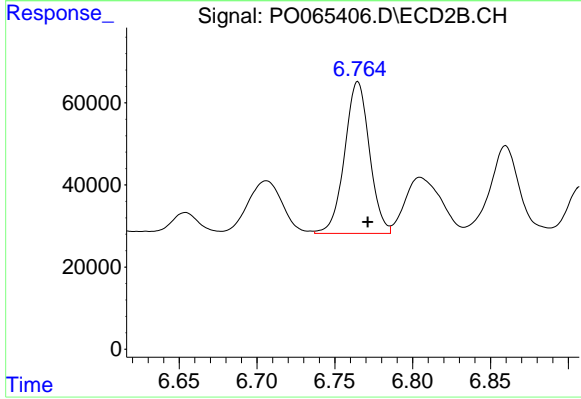
#33 AR-1260-3

R.T.: 6.298 min
 Delta R.T.: -0.006 min
 Response: 563895
 Conc: 260.52 ng/ml



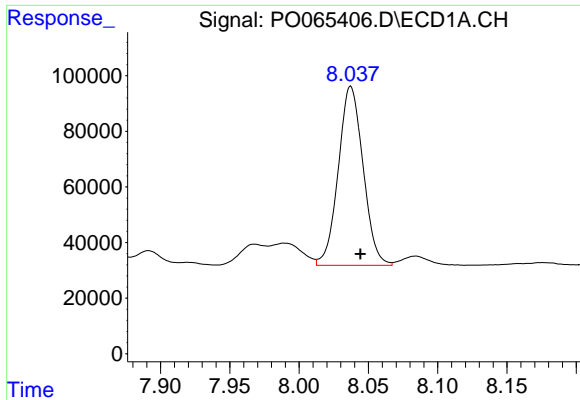
#34 AR-1260-4

R.T.: 7.732 min
 Delta R.T.: -0.006 min
 Response: 465204
 Conc: 266.43 ng/ml



#34 AR-1260-4

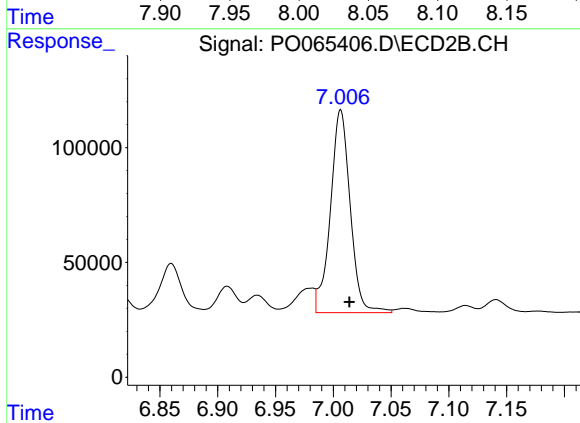
R.T.: 6.765 min
 Delta R.T.: -0.006 min
 Response: 410708
 Conc: 204.72 ng/ml



#35 AR-1260-5

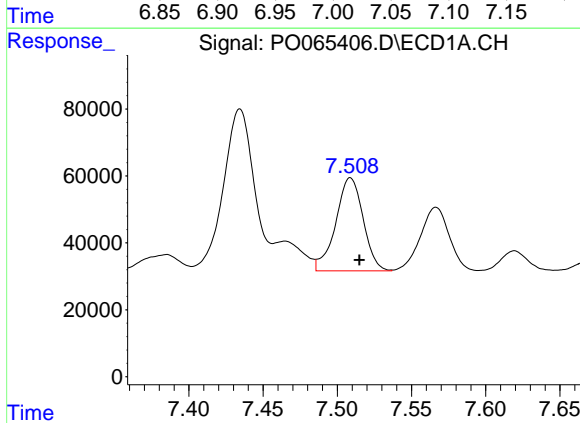
R.T.: 8.037 min
 Delta R.T.: -0.007 min
 Response: 801295
 Conc: 238.94 ng/ml

Instrument :
 ECD_O
 ClientSampled :
 TP-3



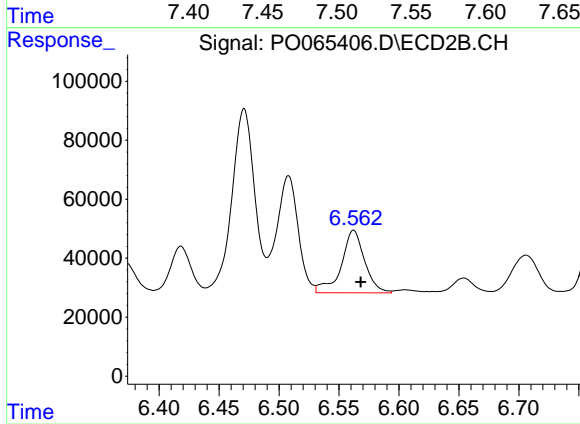
#35 AR-1260-5

R.T.: 7.006 min
 Delta R.T.: -0.008 min
 Response: 1053786
 Conc: 212.87 ng/ml



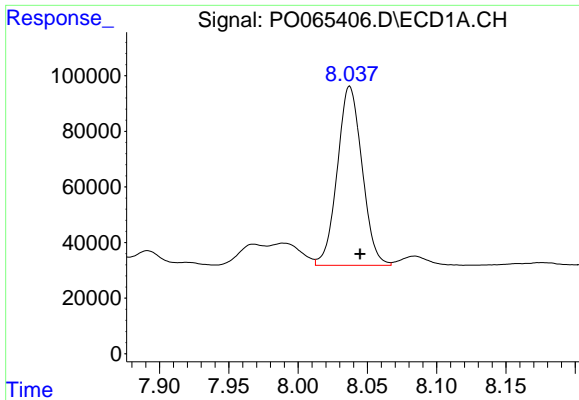
#36 AR-1262-1

R.T.: 7.509 min
 Delta R.T.: -0.006 min
 Response: 357930
 Conc: 216.37 ng/ml



#36 AR-1262-1

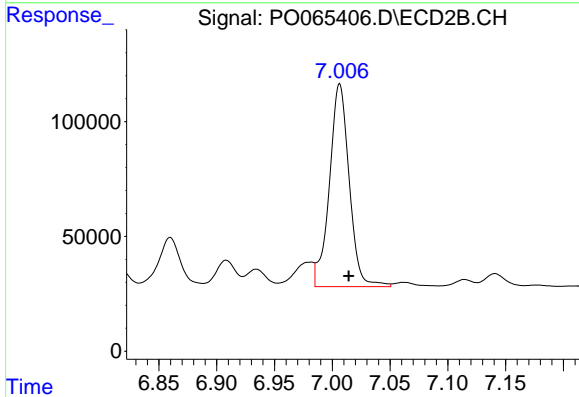
R.T.: 6.562 min
 Delta R.T.: -0.006 min
 Response: 288254
 Conc: 305.76 ng/ml



#37 AR-1262-2

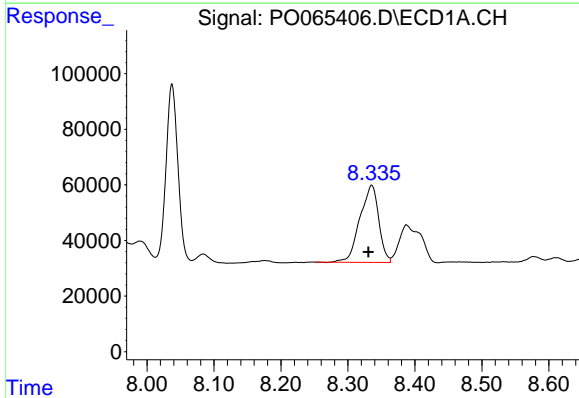
R.T.: 8.037 min
 Delta R.T.: -0.008 min
 Response: 801295
 Conc: 250.22 ng/ml

Instrument :
 ECD_O
 ClientSampled :
 TP-3



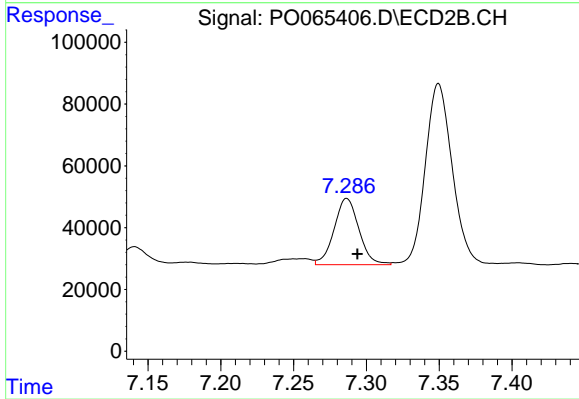
#37 AR-1262-2

R.T.: 7.006 min
 Delta R.T.: -0.008 min
 Response: 1053786
 Conc: 234.52 ng/ml



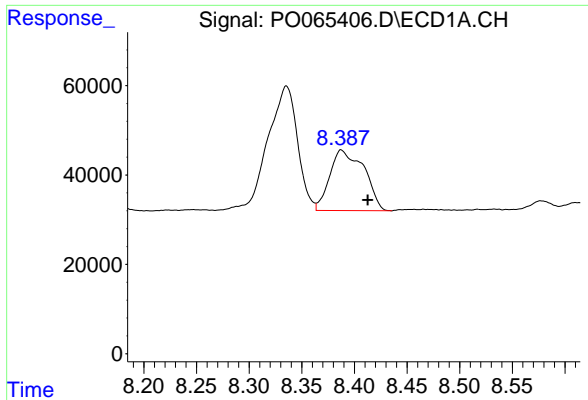
#38 AR-1262-3

R.T.: 8.335 min
 Delta R.T.: 0.005 min
 Response: 543029
 Conc: 238.54 ng/ml



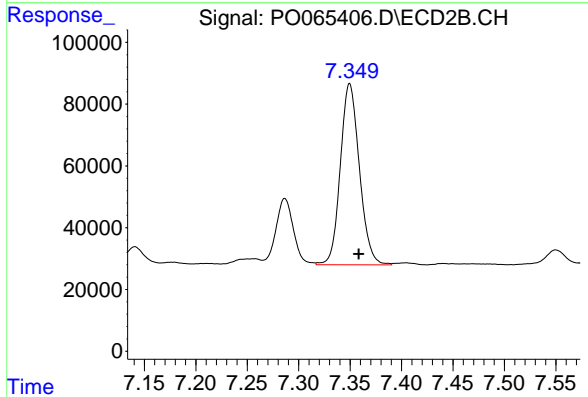
#38 AR-1262-3

R.T.: 7.287 min
 Delta R.T.: -0.007 min
 Response: 254866
 Conc: 151.43 ng/ml

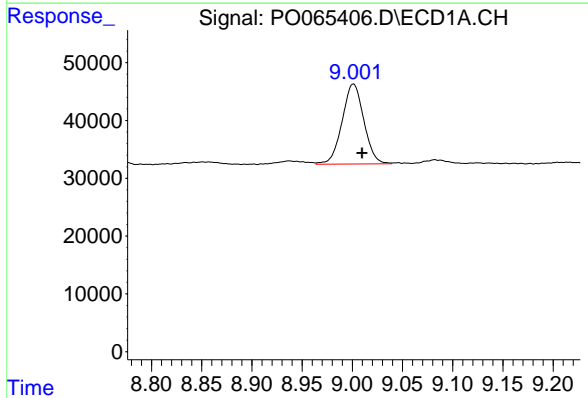


#39 AR-1262-4
 R.T.: 8.388 min
 Delta R.T.: -0.025 min
 Response: 307204
 Conc: 173.79 ng/ml

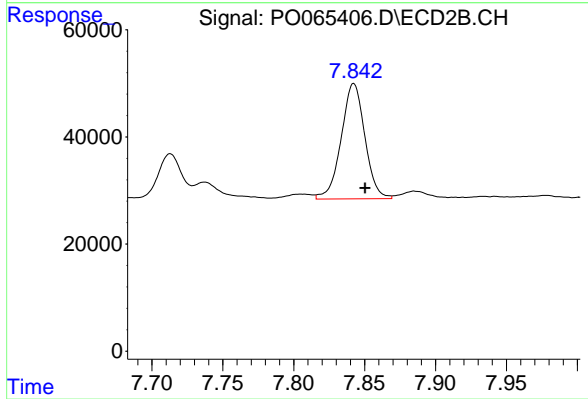
Instrument :
 ECD_O
 ClientSampled :
 TP-3



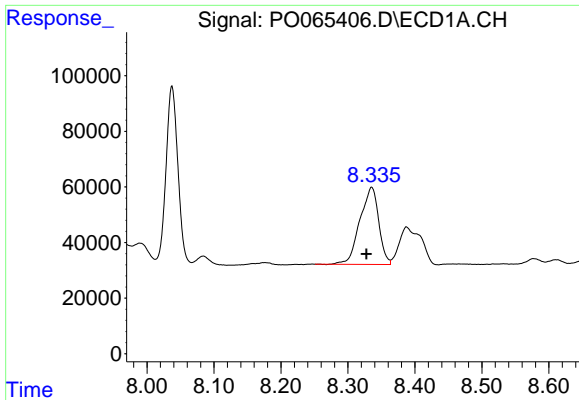
#39 AR-1262-4
 R.T.: 7.350 min
 Delta R.T.: -0.009 min
 Response: 756889
 Conc: 220.09 ng/ml



#40 AR-1262-5
 R.T.: 9.001 min
 Delta R.T.: -0.009 min
 Response: 208316
 Conc: 156.60 ng/ml



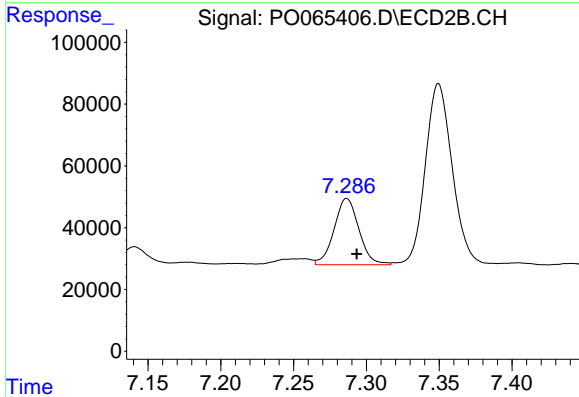
#40 AR-1262-5
 R.T.: 7.842 min
 Delta R.T.: -0.008 min
 Response: 250186
 Conc: 146.72 ng/ml



#41 AR-1268-1

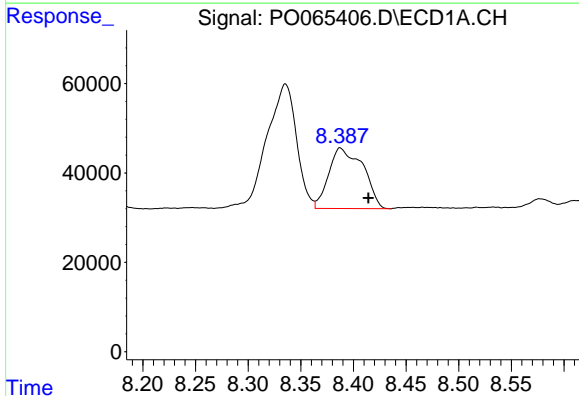
R.T.: 8.335 min
 Delta R.T.: 0.008 min
 Response: 543029
 Conc: 133.48 ng/ml

Instrument :
 ECD_O
 ClientSampled :
 TP-3



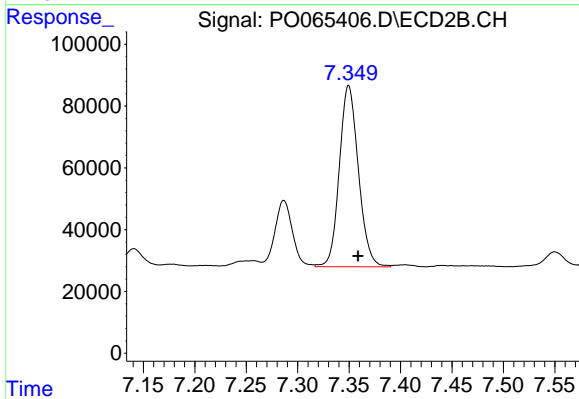
#41 AR-1268-1

R.T.: 7.287 min
 Delta R.T.: -0.007 min
 Response: 254866
 Conc: 47.99 ng/ml



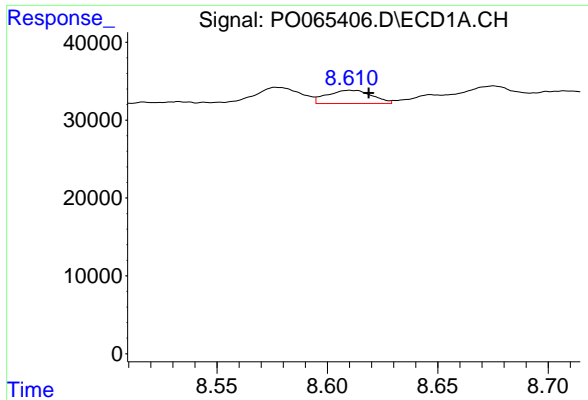
#42 AR-1268-2

R.T.: 8.388 min
 Delta R.T.: -0.027 min
 Response: 307204
 Conc: 79.82 ng/ml



#42 AR-1268-2

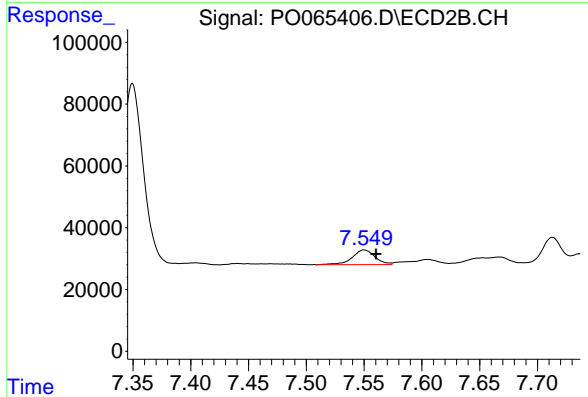
R.T.: 7.350 min
 Delta R.T.: -0.009 min
 Response: 756889
 Conc: 149.01 ng/ml



#43 AR-1268-3

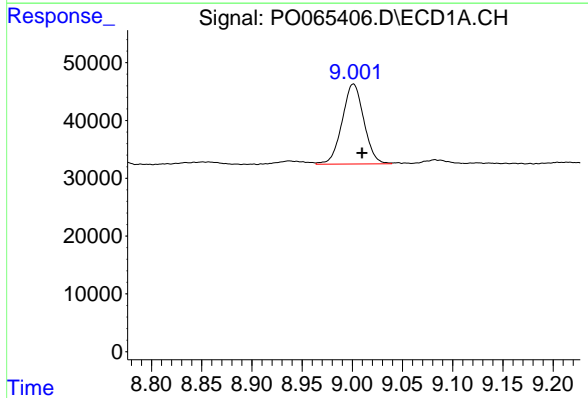
R.T.: 8.610 min
 Delta R.T.: -0.008 min
 Response: 24036
 Conc: 7.47 ng/ml

Instrument :
 ECD_O
 ClientSampleId :
 TP-3



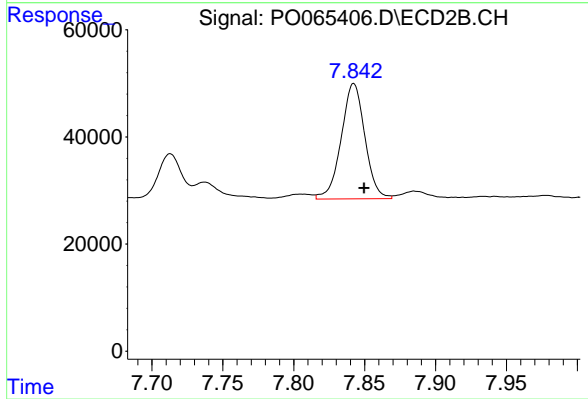
#43 AR-1268-3

R.T.: 7.550 min
 Delta R.T.: -0.010 min
 Response: 65172
 Conc: 15.34 ng/ml



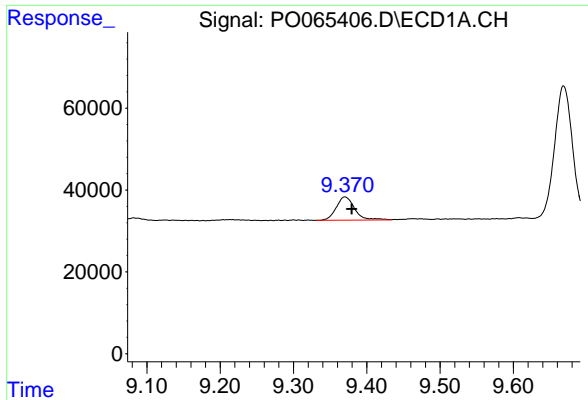
#44 AR-1268-4

R.T.: 9.001 min
 Delta R.T.: -0.009 min
 Response: 208316
 Conc: 135.62 ng/ml



#44 AR-1268-4

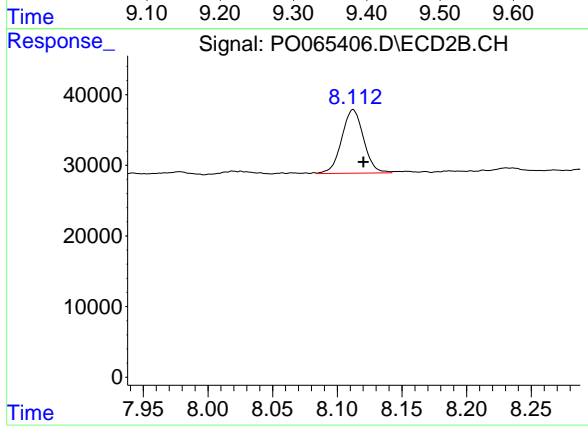
R.T.: 7.842 min
 Delta R.T.: -0.007 min
 Response: 250186
 Conc: 126.41 ng/ml



#45 AR-1268-5

R.T.: 9.370 min
Delta R.T.: -0.009 min
Response: 99309
Conc: 8.96 ng/ml

Instrument :
ECD_O
ClientSampleId :
TP-3



#45 AR-1268-5

R.T.: 8.112 min
Delta R.T.: -0.008 min
Response: 105947
Conc: 7.37 ng/ml