

Data Path : Z:\pestpcbsrv\HPCHEM1\ECD_0\Data\P0010920\
 Data File : P0065397.D
 Signal(s) : Signal #1: ECD1A.CH Signal #2: ECD2B.CH
 Acq On : 09 Jan 2020 9:25
 Operator : AJ/MA
 Sample : AR1660CCC500
 Misc :
 ALS Vial : 3 Sample Multiplier: 1

Instrument :
 ECD_0
ClientSampleId :
 AR1660CCC500

Manual Integrations
APPROVED

mohammad
 1/10/2020 10:25:34 AM

Integration File signal 1: autoint1.e
 Integration File signal 2: autoint2.e
 Quant Time: Jan 09 15:36:49 2020
 Quant Method : Z:\pestpcbsrv\HPCHEM1\ECD_0\methods\P0010420.M
 Quant Title : GC EXTRACTABLES
 QLast Update : Sat Jan 04 04:01:28 2020
 Response via : Initial Calibration
 Integrator: ChemStation 6890 Scale Mode: Small noise peaks clipped

Volume Inj. : 2 µl
 Signal #1 Phase : ZB-MR2 Signal #2 Phase: ZB-MR2
 Signal #1 Info : 30Mx0.32mmx 0.50µ Signal #2 Info : 30M x 0.32mm x 0.25µm

Compound	RT#1	RT#2	Resp#1	Resp#2	ng/ml	ng/ml

System Monitoring Compounds						
1) SA Tetrachlo...	4.166	3.441	938606	1005719	51.401	45.720
2) SA Decachlor...	9.669	8.343	1572427	1830102	46.408m	44.131
Target Compounds						
3) L1 AR-1016-1	5.317	4.501	453038	491278	519.450	476.804
4) L1 AR-1016-2	5.338	4.519	670659	697252	522.856	481.154
5) L1 AR-1016-3	5.399	4.691	408683	373970	518.715	481.018
6) L1 AR-1016-4	5.496	4.734	332303	309195	515.020	462.475
7) L1 AR-1016-5	5.787	4.943	335938	412528	506.738	484.834
31) L7 AR-1260-1	6.899	5.961	679408	892546	492.599	474.089
32) L7 AR-1260-2	7.155	6.148	881429	1138880	502.375	468.773
33) L7 AR-1260-3	7.510	6.299	703994	1009194	498.085	466.246
34) L7 AR-1260-4	7.733	6.766	794650	905086	455.107	451.139
35) L7 AR-1260-5	8.039	7.008	1644927	2252492	490.498	455.005

(f)=RT Delta > 1/2 Window (#)=Amounts differ by > 25% (m)=manual int.

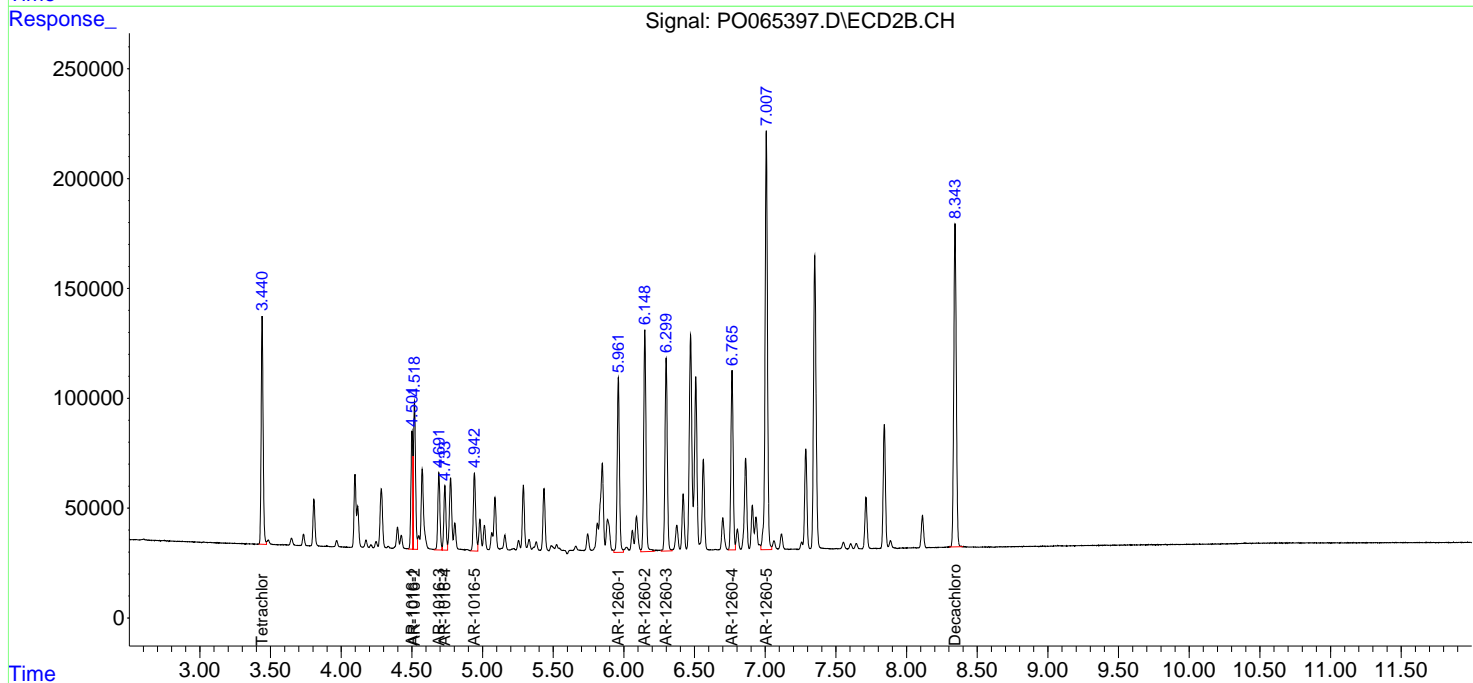
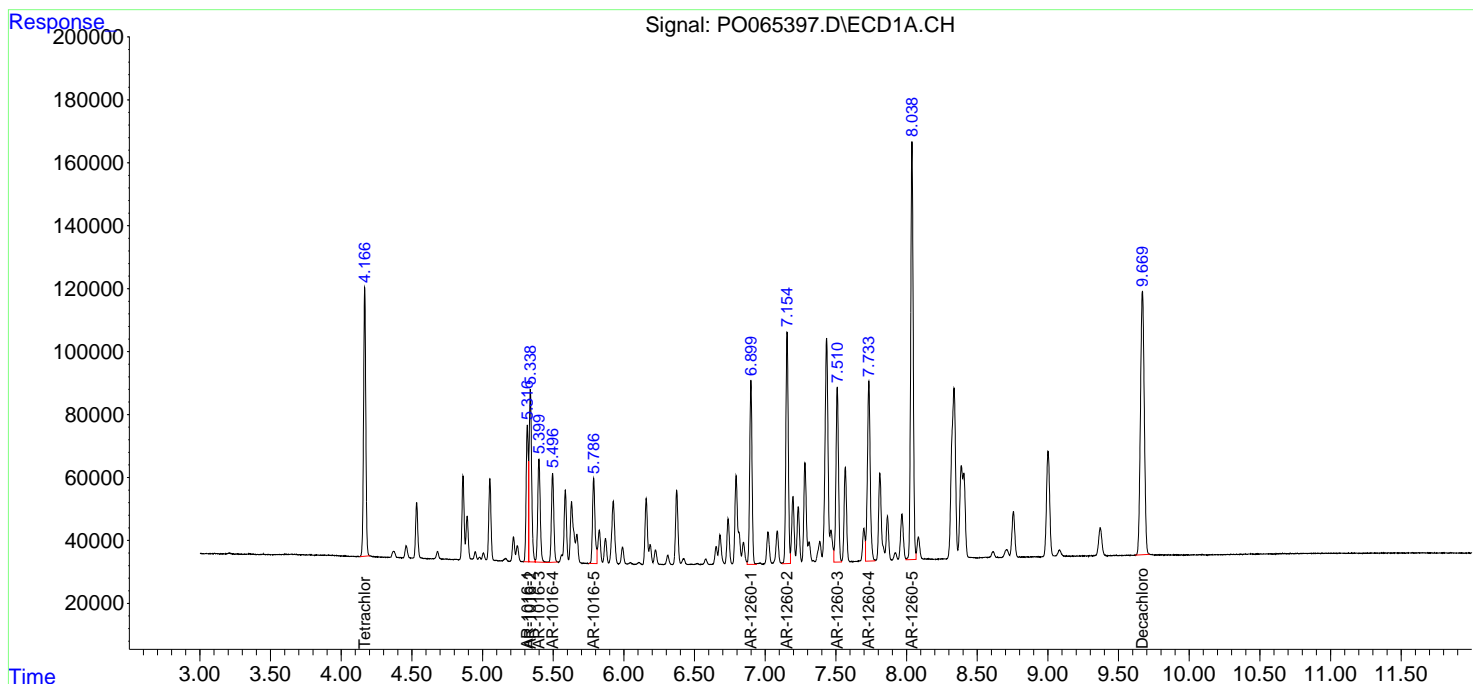
Data Path : Z:\pestpcbsrv\HPCHEM1\ECD_O\Data\P0010920\
 Data File : P0065397.D
 Signal(s) : Signal #1: ECD1A.CH Signal #2: ECD2B.CH
 Acq On : 09 Jan 2020 9:25
 Operator : AJ/MA
 Sample : AR1660CCC500
 Misc :
 ALS Vial : 3 Sample Multiplier: 1

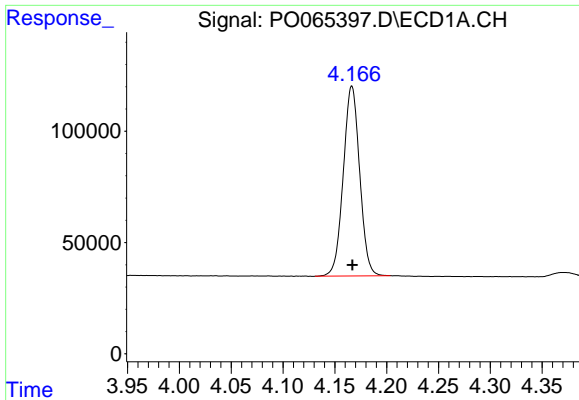
Instrument :
 ECD_O
Client Sampled :
 AR1660CCC500

Manual Integrations
APPROVED
 mohammad
 1/10/2020 10:25:34 AM

Integration File signal 1: autoint1.e
 Integration File signal 2: autoint2.e
 Quant Time: Jan 09 15:36:49 2020
 Quant Method : Z:\pestpcbsrv\HPCHEM1\ECD_O\methods\P0010420.M
 Quant Title : GC EXTRACTABLES
 QLast Update : Sat Jan 04 04:01:28 2020
 Response via : Initial Calibration
 Integrator: ChemStation 6890 Scale Mode: Small noise peaks clipped

Volume Inj. : 2 µl
 Signal #1 Phase : ZB-MR1 Signal #2 Phase: ZB-MR2
 Signal #1 Info : 30Mx0.32mmx 0.50µ Signal #2 Info : 30M x 0.32mm x 0.25µm





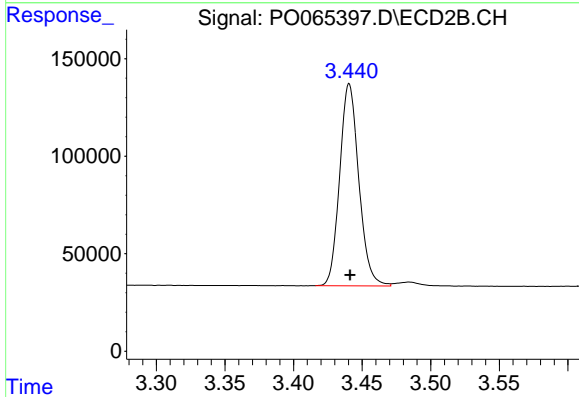
#1 Tetrachloro-m-xylene

R.T.: 4.166 min
 Delta R.T.: 0.000 min
 Response: 938606
 Conc: 51.40 ng/ml

Instrument :
 ECD_O
 ClientSampled :
 AR1660CCC500

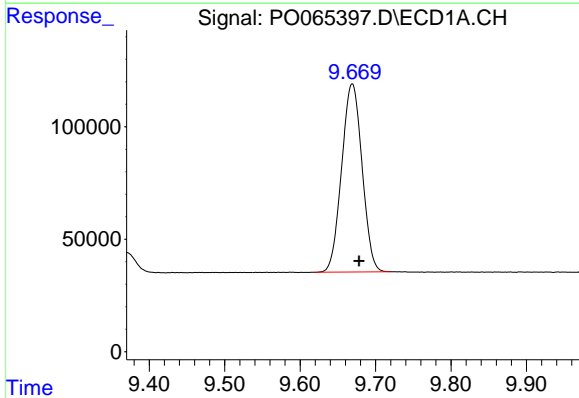
Manual Integrations
 APPROVED

mohammad
 1/10/2020 10:25:34 AM



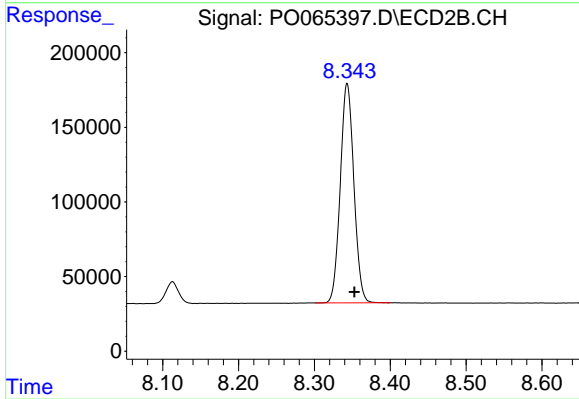
#1 Tetrachloro-m-xylene

R.T.: 3.441 min
 Delta R.T.: 0.000 min
 Response: 1005719
 Conc: 45.72 ng/ml



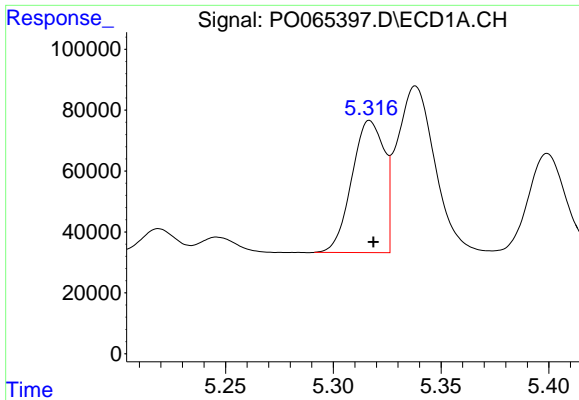
#2 Decachlorobiphenyl

R.T.: 9.669 min
 Delta R.T.: -0.009 min
 Response: 1572427
 Conc: 46.41 ng/ml m



#2 Decachlorobiphenyl

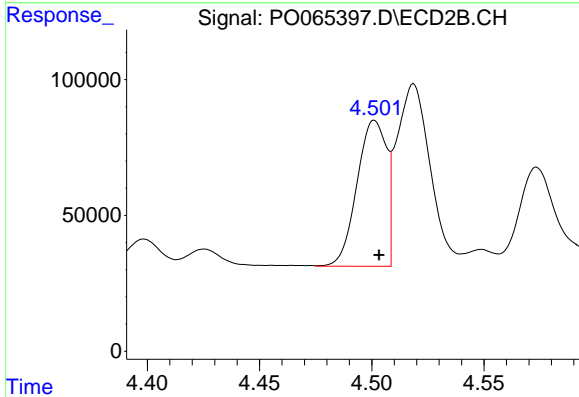
R.T.: 8.343 min
 Delta R.T.: -0.009 min
 Response: 1830102
 Conc: 44.13 ng/ml



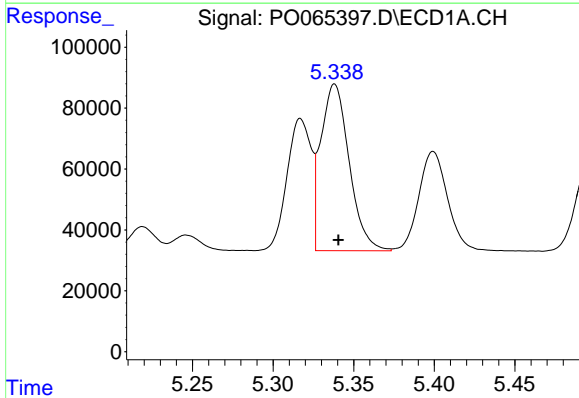
#3 AR-1016-1
 R.T.: 5.317 min
 Delta R.T.: -0.002 min
 Response: 453038
 Conc: 519.45 ng/ml

Instrument :
 ECD_O
ClientSampled :
 AR1660CCC500

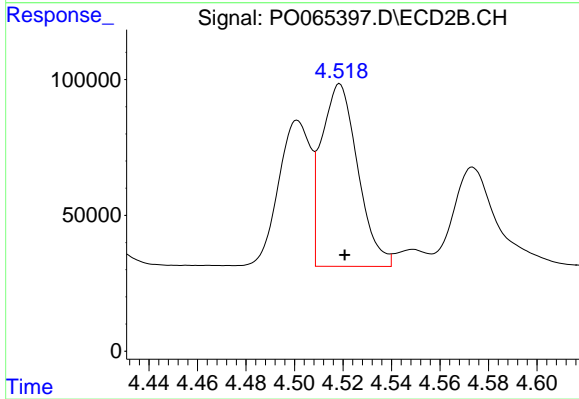
Manual Integrations
APPROVED
 mohammad
 1/10/2020 10:25:34 AM



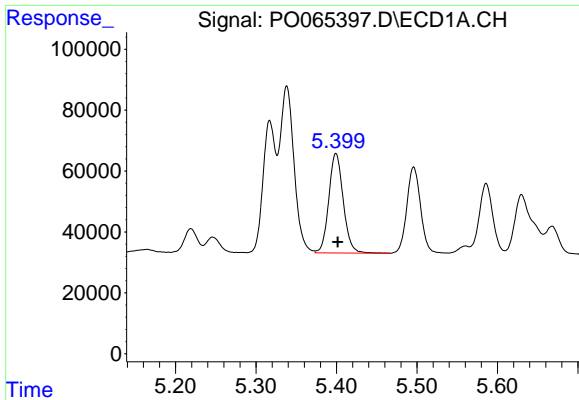
#3 AR-1016-1
 R.T.: 4.501 min
 Delta R.T.: -0.002 min
 Response: 491278
 Conc: 476.80 ng/ml



#4 AR-1016-2
 R.T.: 5.338 min
 Delta R.T.: -0.002 min
 Response: 670659
 Conc: 522.86 ng/ml



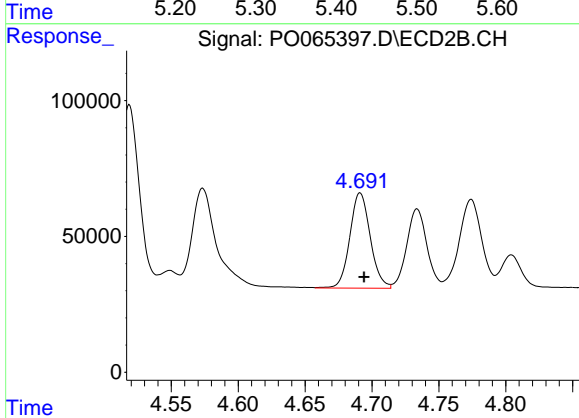
#4 AR-1016-2
 R.T.: 4.519 min
 Delta R.T.: -0.002 min
 Response: 697252
 Conc: 481.15 ng/ml



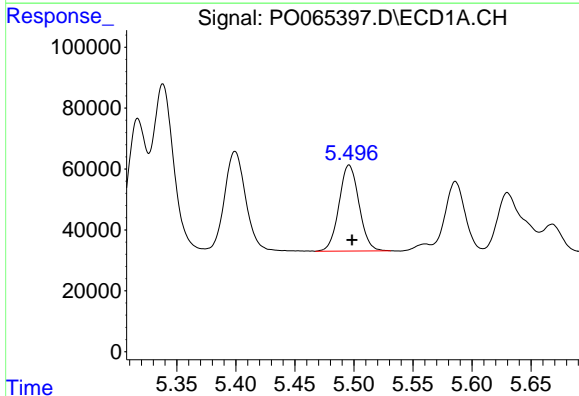
#5 AR-1016-3
 R.T.: 5.399 min
 Delta R.T.: -0.002 min
 Response: 408683
 Conc: 518.71 ng/ml

Instrument :
 ECD_O
 ClientSampled :
 AR1660CCC500

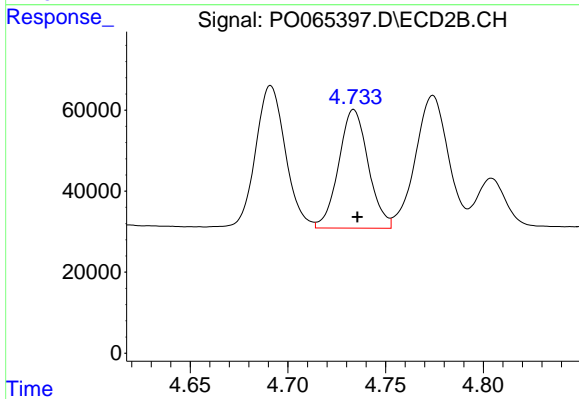
Manual Integrations
 APPROVED
 mohammad
 1/10/2020 10:25:34 AM



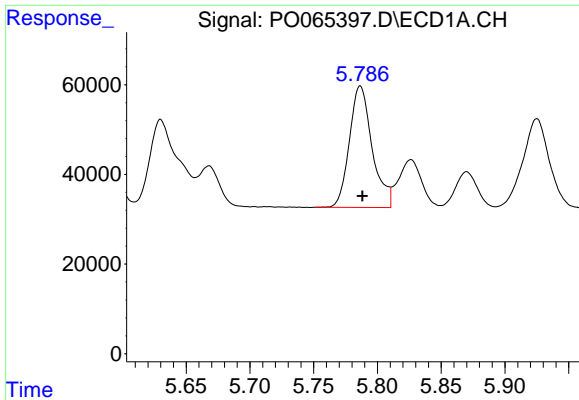
#5 AR-1016-3
 R.T.: 4.691 min
 Delta R.T.: -0.003 min
 Response: 373970
 Conc: 481.02 ng/ml



#6 AR-1016-4
 R.T.: 5.496 min
 Delta R.T.: -0.002 min
 Response: 332303
 Conc: 515.02 ng/ml



#6 AR-1016-4
 R.T.: 4.734 min
 Delta R.T.: -0.002 min
 Response: 309195
 Conc: 462.48 ng/ml

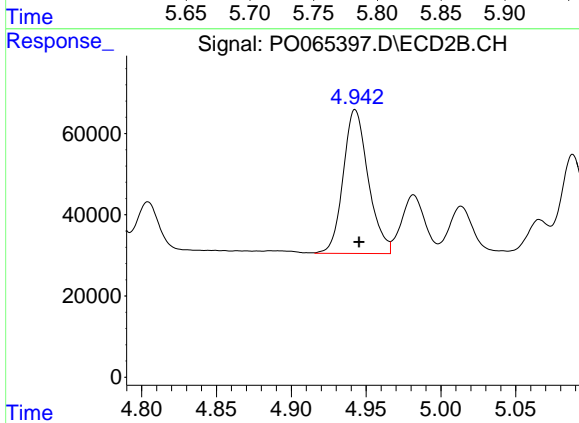


#7 AR-1016-5

R.T.: 5.787 min
 Delta R.T.: -0.002 min
 Response: 335938
 Conc: 506.74 ng/ml

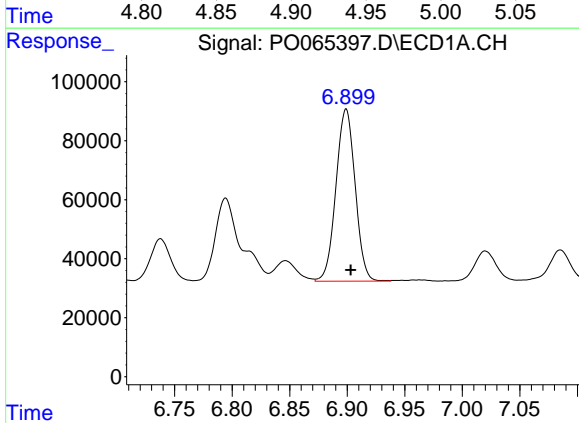
Instrument :
 ECD_O
ClientSampled :
 AR1660CCC500

Manual Integrations
APPROVED
 mohammad
 1/10/2020 10:25:34 AM



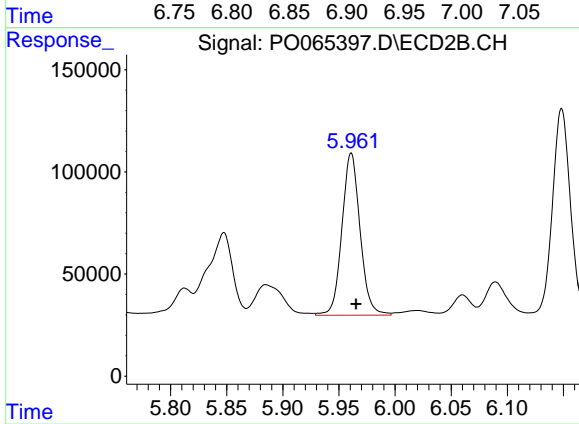
#7 AR-1016-5

R.T.: 4.943 min
 Delta R.T.: -0.003 min
 Response: 412528
 Conc: 484.83 ng/ml



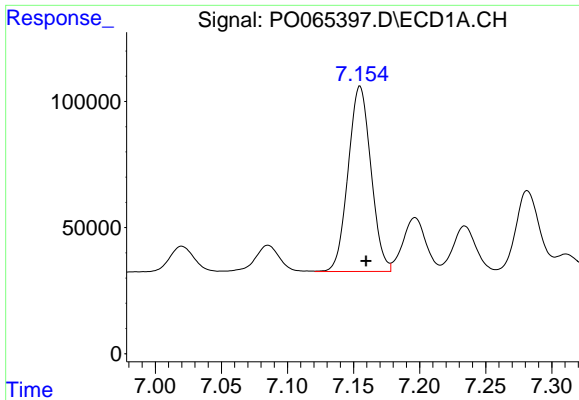
#31 AR-1260-1

R.T.: 6.899 min
 Delta R.T.: -0.004 min
 Response: 679408
 Conc: 492.60 ng/ml



#31 AR-1260-1

R.T.: 5.961 min
 Delta R.T.: -0.004 min
 Response: 892546
 Conc: 474.09 ng/ml

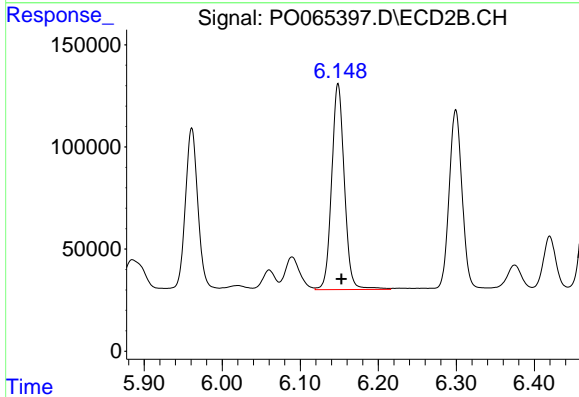


#32 AR-1260-2

R.T.: 7.155 min
 Delta R.T.: -0.005 min
 Response: 881429
 Conc: 502.37 ng/ml

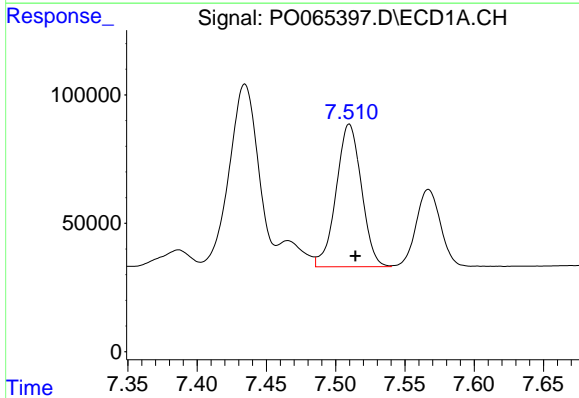
Instrument :
 ECD_O
 ClientSampled :
 AR1660CCC500

Manual Integrations
 APPROVED
 mohammad
 1/10/2020 10:25:34 AM



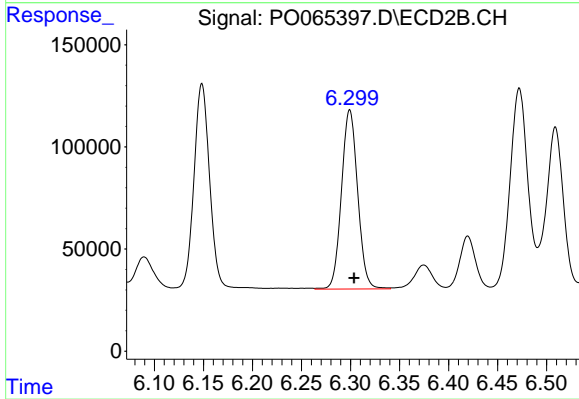
#32 AR-1260-2

R.T.: 6.148 min
 Delta R.T.: -0.004 min
 Response: 1138880
 Conc: 468.77 ng/ml



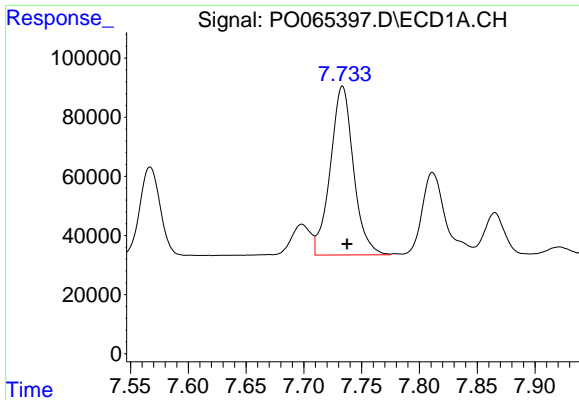
#33 AR-1260-3

R.T.: 7.510 min
 Delta R.T.: -0.004 min
 Response: 703994
 Conc: 498.09 ng/ml



#33 AR-1260-3

R.T.: 6.299 min
 Delta R.T.: -0.005 min
 Response: 1009194
 Conc: 466.25 ng/ml

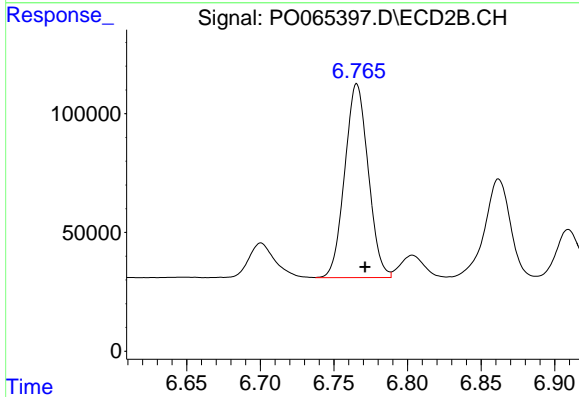


#34 AR-1260-4

R.T.: 7.733 min
 Delta R.T.: -0.004 min
 Response: 794650
 Conc: 455.11 ng/ml

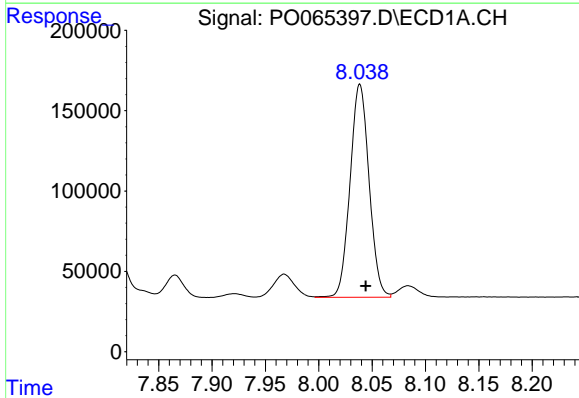
Instrument :
 ECD_O
 ClientSampled :
 AR1660CCC500

Manual Integrations
 APPROVED
 mohammad
 1/10/2020 10:25:34 AM



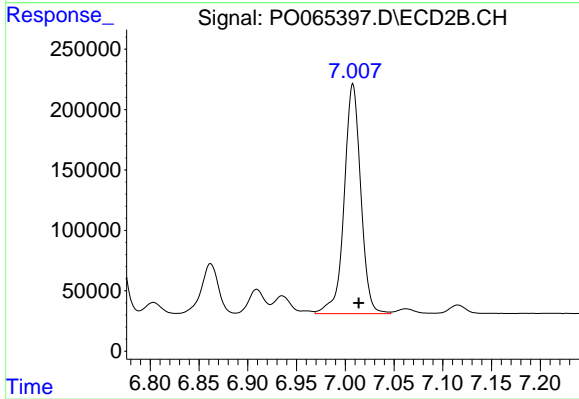
#34 AR-1260-4

R.T.: 6.766 min
 Delta R.T.: -0.006 min
 Response: 905086
 Conc: 451.14 ng/ml



#35 AR-1260-5

R.T.: 8.039 min
 Delta R.T.: -0.006 min
 Response: 1644927
 Conc: 490.50 ng/ml



#35 AR-1260-5

R.T.: 7.008 min
 Delta R.T.: -0.006 min
 Response: 2252492
 Conc: 455.00 ng/ml