

Data Path : Z:\pestpcbsrv\HPCHEM1\ECD_O\Data\P0010924\
 Data File : P0101035.D
 Signal(s) : Signal #1: ECD1A.ch Signal #2: ECD2B.ch
 Acq On : 10 Jan 2024 01:03
 Operator : YP/AJ
 Sample : AR1248CCC500
 Misc :
 ALS Vial : 5 Sample Multiplier: 1

Instrument :
 ECD_O
 ClientSampleId :
 AR1248CCC500

Integration File signal 1: autoint1.e
 Integration File signal 2: autoint2.e
 Quant Time: Jan 10 04:11:53 2024
 Quant Method : Z:\pestpcbsrv\HPCHEM1\ECD_O\methods\P0122023.M
 Quant Title : GC EXTRACTABLES
 QLast Update : Thu Dec 21 04:28:19 2023
 Response via : Initial Calibration
 Integrator: ChemStation

Volume Inj. : 2 µl
 Signal #1 Phase : ZB-MR1 Signal #2 Phase: ZB-MR2
 Signal #1 Info : 30Mx0.32mmx 0.50µ Signal #2 Info : 30M x 0.32mm x 0.25µm

Compound	RT#1	RT#2	Resp#1	Resp#2	ng/ml	ng/ml

System Monitoring Compounds						
1) SA Tetrachlo...	4.345	3.639	196.9E6	130.0E6	63.119	63.618
2) SA Decachlor...	10.101	8.705	102.9E6	83472054	49.268	55.303
Target Compounds						
21) L5 AR-1248-1	5.515	4.736	34034134	25082504	620.379	627.241
22) L5 AR-1248-2	5.791	4.975	52326237	36530179	605.856	607.191
23) L5 AR-1248-3	5.995	5.017	54221883	38546671	617.748	616.655
24) L5 AR-1248-4	6.400	5.192	53859632	45116646	599.060	626.353
25) L5 AR-1248-5	6.439	5.589	54378955	39573039	605.823	641.462

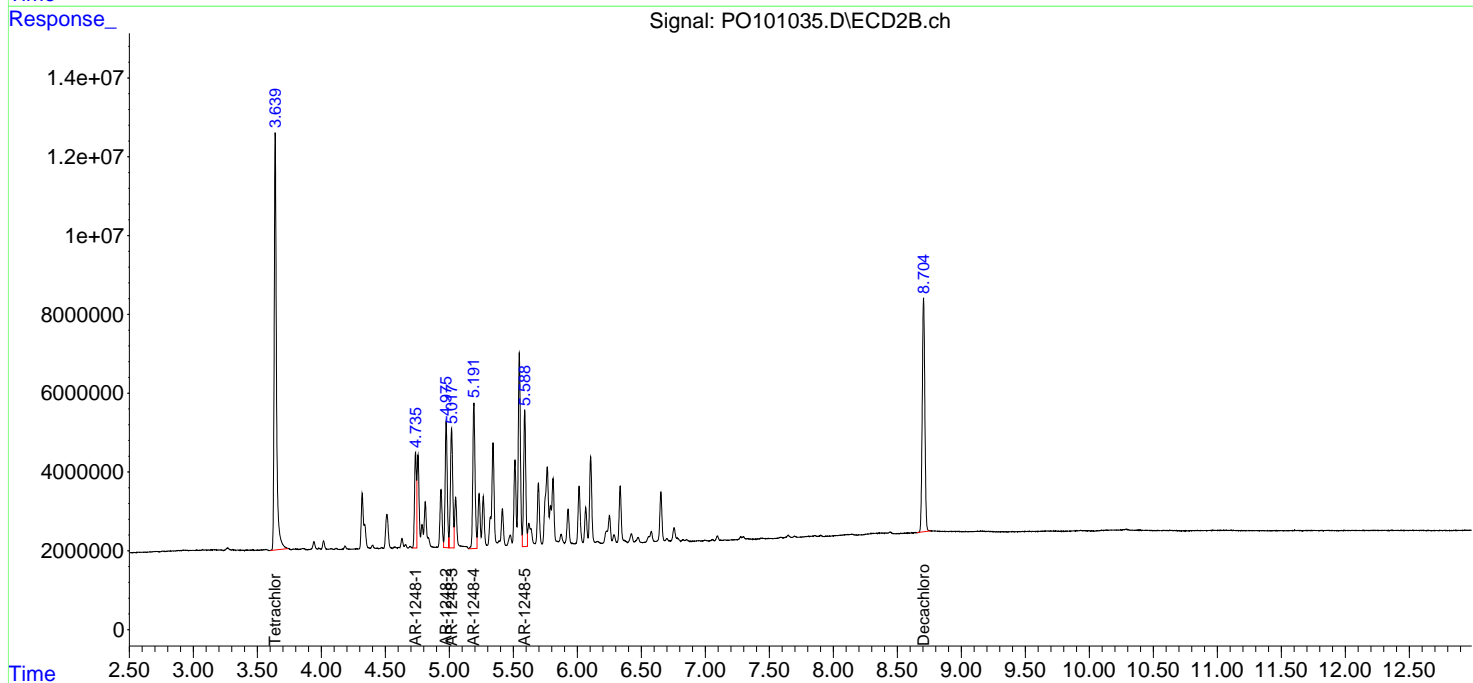
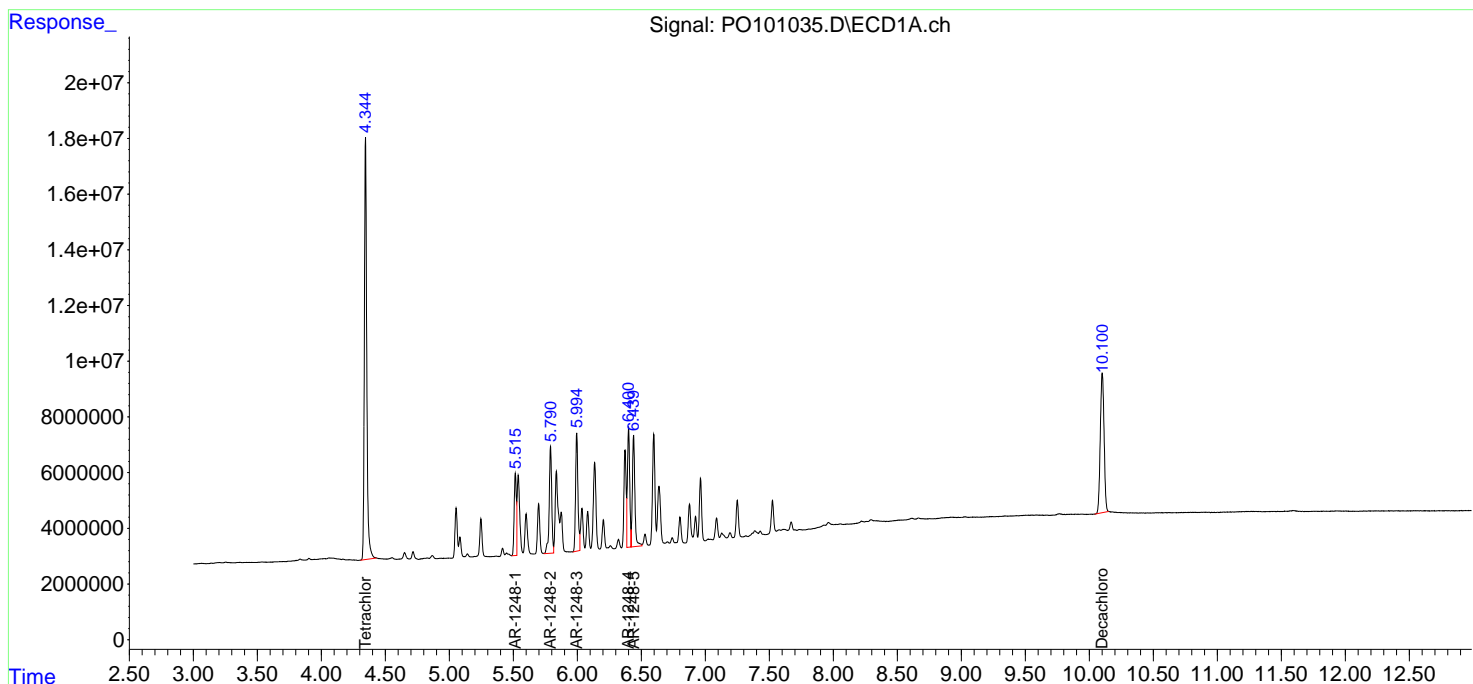
(f)=RT Delta > 1/2 Window (#)=Amounts differ by > 25% (m)=manual int.

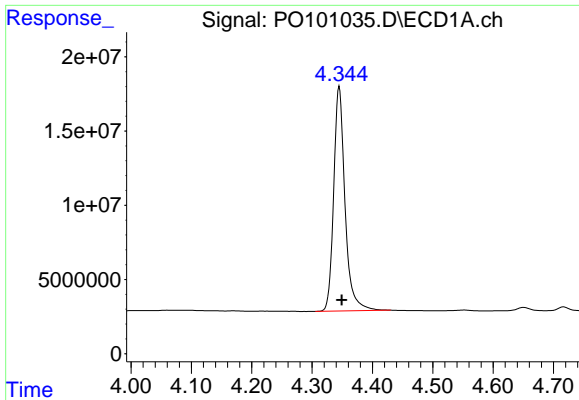
Data Path : Z:\pestpcbsrv\HPCHEM1\ECD_O\Data\PO010924\
 Data File : PO101035.D
 Signal(s) : Signal #1: ECD1A.ch Signal #2: ECD2B.ch
 Acq On : 10 Jan 2024 01:03
 Operator : YP/AJ
 Sample : AR1248CCC500
 Misc :
 ALS Vial : 5 Sample Multiplier: 1

Instrument :
 ECD_O
 ClientSampleId :
 AR1248CCC500

Integration File signal 1: autoint1.e
 Integration File signal 2: autoint2.e
 Quant Time: Jan 10 04:11:53 2024
 Quant Method : Z:\pestpcbsrv\HPCHEM1\ECD_O\methods\PO122023.M
 Quant Title : GC EXTRACTABLES
 QLast Update : Thu Dec 21 04:28:19 2023
 Response via : Initial Calibration
 Integrator: ChemStation

Volume Inj. : 2 µl
 Signal #1 Phase : ZB-MR1 Signal #2 Phase: ZB-MR2
 Signal #1 Info : 30Mx0.32mmx 0.50µ Signal #2 Info : 30M x 0.32mm x 0.25µm

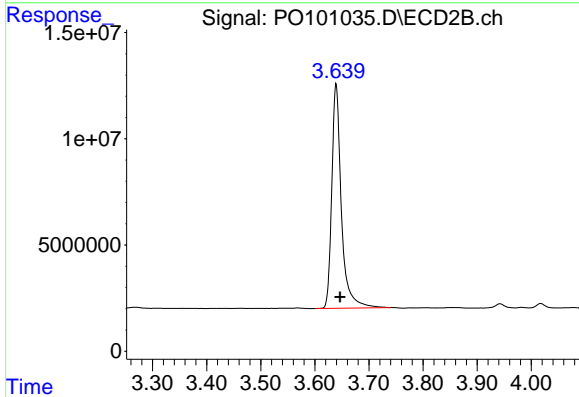




#1 Tetrachloro-m-xylene

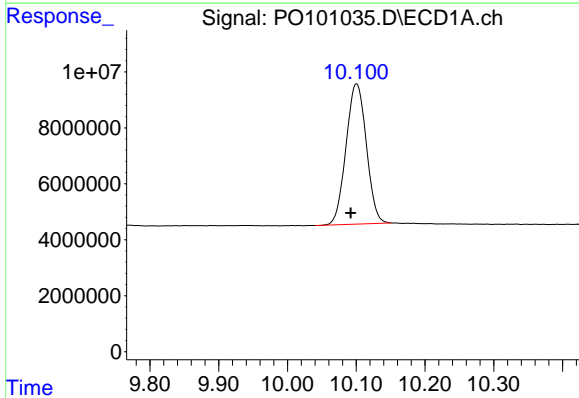
R.T.: 4.345 min
 Delta R.T.: -0.004 min
 Response: 196946512
 Conc: 63.12 ng/ml

Instrument :
 ECD_O
 ClientSampleId :
 AR1248CCC500



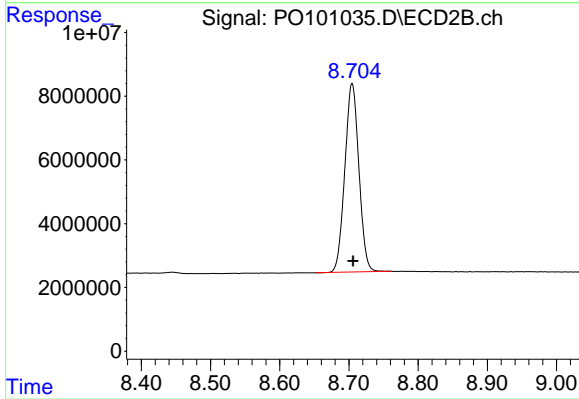
#1 Tetrachloro-m-xylene

R.T.: 3.639 min
 Delta R.T.: -0.007 min
 Response: 129998038
 Conc: 63.62 ng/ml



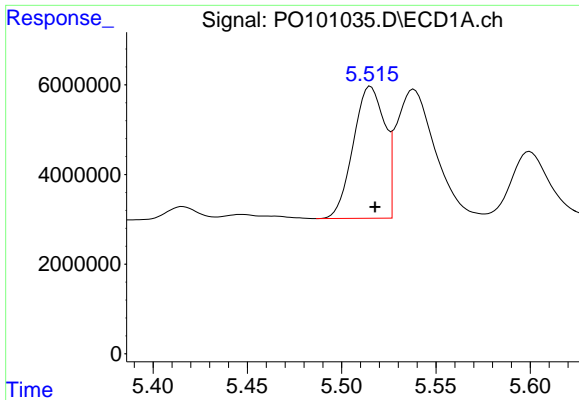
#2 Decachlorobiphenyl

R.T.: 10.101 min
 Delta R.T.: 0.009 min
 Response: 102926399
 Conc: 49.27 ng/ml



#2 Decachlorobiphenyl

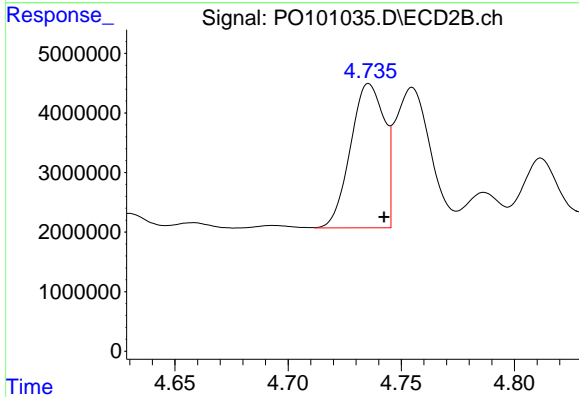
R.T.: 8.705 min
 Delta R.T.: -0.001 min
 Response: 83472054
 Conc: 55.30 ng/ml



#21 AR-1248-1

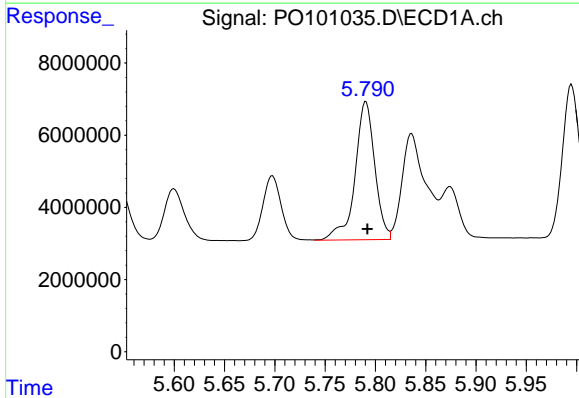
R.T.: 5.515 min
 Delta R.T.: -0.002 min
 Response: 34034134
 Conc: 620.38 ng/ml

Instrument :
 ECD_O
 ClientSampleId :
 AR1248CCC500



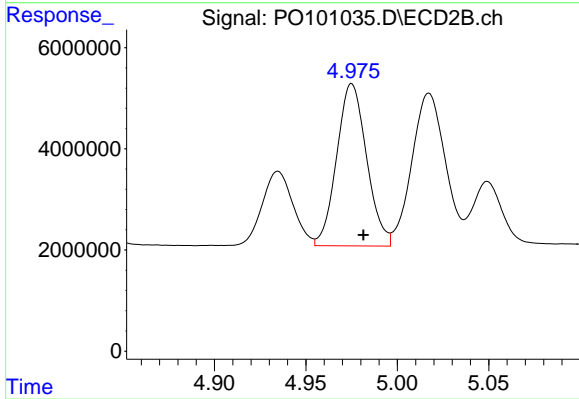
#21 AR-1248-1

R.T.: 4.736 min
 Delta R.T.: -0.007 min
 Response: 25082504
 Conc: 627.24 ng/ml



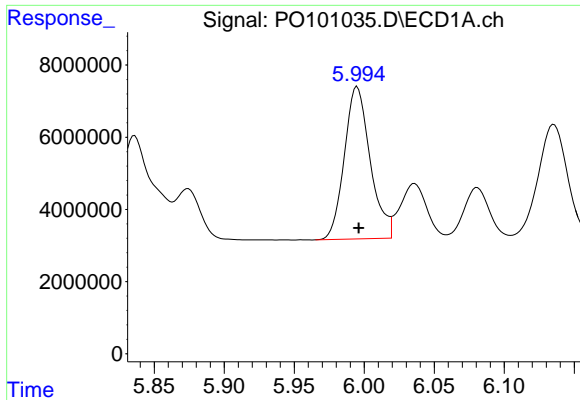
#22 AR-1248-2

R.T.: 5.791 min
 Delta R.T.: -0.001 min
 Response: 52326237
 Conc: 605.86 ng/ml



#22 AR-1248-2

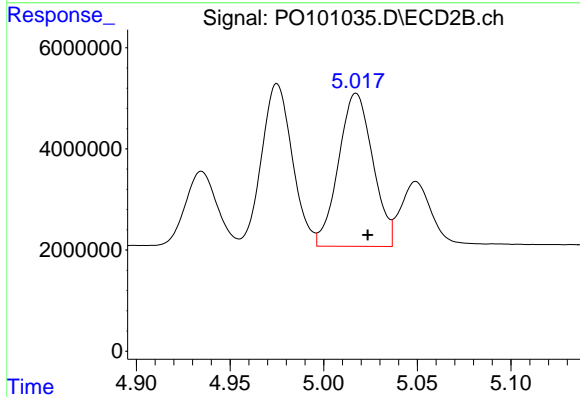
R.T.: 4.975 min
 Delta R.T.: -0.006 min
 Response: 36530179
 Conc: 607.19 ng/ml



#23 AR-1248-3

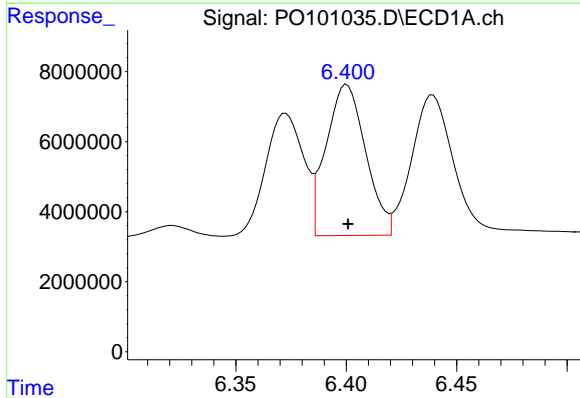
R.T.: 5.995 min
 Delta R.T.: -0.001 min
 Response: 54221883
 Conc: 617.75 ng/ml

Instrument :
 ECD_O
 ClientSampleId :
 AR1248CCC500



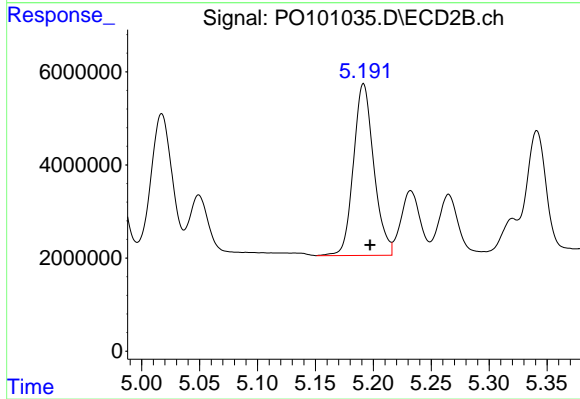
#23 AR-1248-3

R.T.: 5.017 min
 Delta R.T.: -0.006 min
 Response: 38546671
 Conc: 616.65 ng/ml



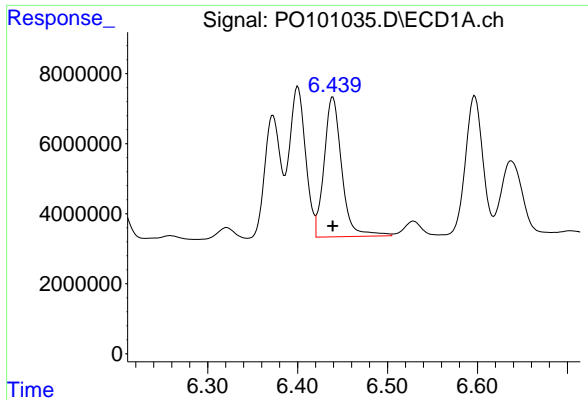
#24 AR-1248-4

R.T.: 6.400 min
 Delta R.T.: 0.000 min
 Response: 53859632
 Conc: 599.06 ng/ml



#24 AR-1248-4

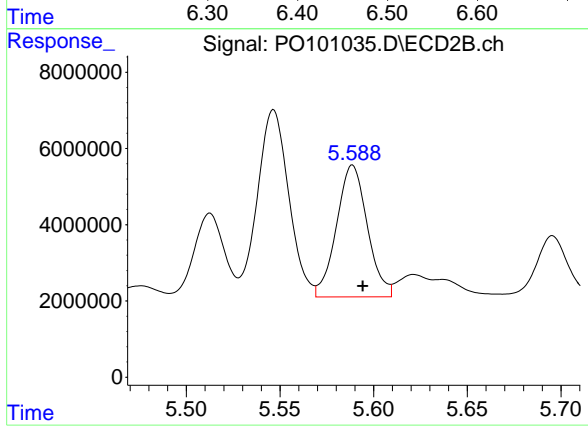
R.T.: 5.192 min
 Delta R.T.: -0.006 min
 Response: 45116646
 Conc: 626.35 ng/ml



#25 AR-1248-5

R.T.: 6.439 min
Delta R.T.: 0.000 min
Response: 54378955
Conc: 605.82 ng/ml

Instrument :
ECD_O
ClientSampleId :
AR1248CCC500



#25 AR-1248-5

R.T.: 5.589 min
Delta R.T.: -0.005 min
Response: 39573039
Conc: 641.46 ng/ml