

Data Path : Z:\pestpcbsrv\HPCHEM1\ECD\_0\Data\P0011019\  
 Data File : P0053345.D  
 Signal(s) : Signal #1: ECD1A.CH Signal #2: ECD2B.CH  
 Acq On : 10 Jan 2019 11:14  
 Operator : SM/SJ  
 Sample : K1082-15  
 Misc :  
 ALS Vial : 12 Sample Multiplier: 1

Instrument :  
 ECD\_0  
 ClientSampleId :

Integration File signal 1: autoint1.e  
 Integration File signal 2: autoint2.e  
 Quant Time: Jan 11 00:43:41 2019  
 Quant Method : Z:\pestpcbsrv\HPCHEM1\ECD\_0\methods\P0010819.M  
 Quant Title : GC EXTRACTABLES  
 QLast Update : Wed Jan 09 03:34:05 2019  
 Response via : Initial Calibration  
 Integrator: ChemStation 6890 Scale Mode: Small noise peaks clipped

Volume Inj. : 2 µl  
 Signal #1 Phase : ZB-MR1 Signal #2 Phase: ZB-MR2  
 Signal #1 Info : 30Mx0.32mmx 0.50µ Signal #2 Info : 30M x 0.32mm x 0.25µm

Compound	RT#1	RT#2	Resp#1	Resp#2	ng/ml	ng/ml
-----						
System Monitoring Compounds						
1) SA Tetrachlo...	4.167	3.205	25067339	3598489	18.760	14.392
2) SA Decachlor...	9.627	7.847	14746032	4460699	18.669	19.479

Target Compounds

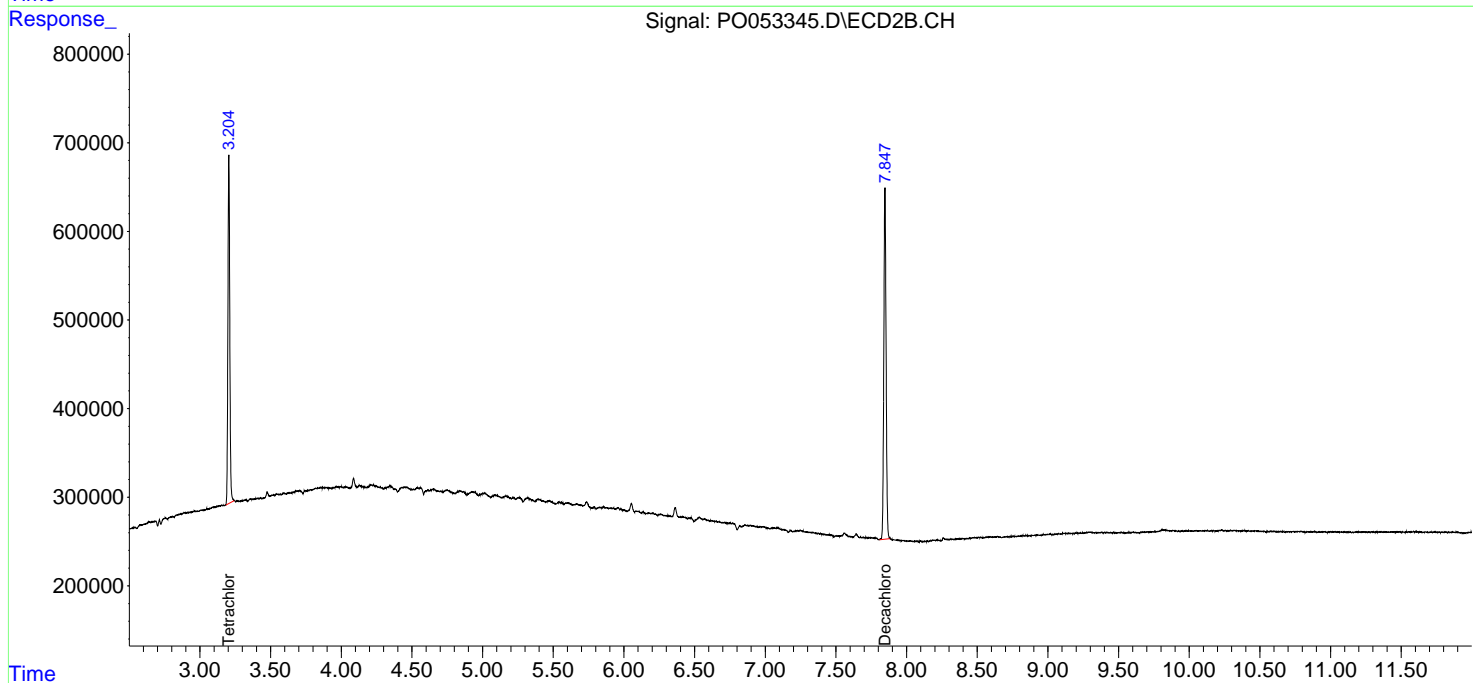
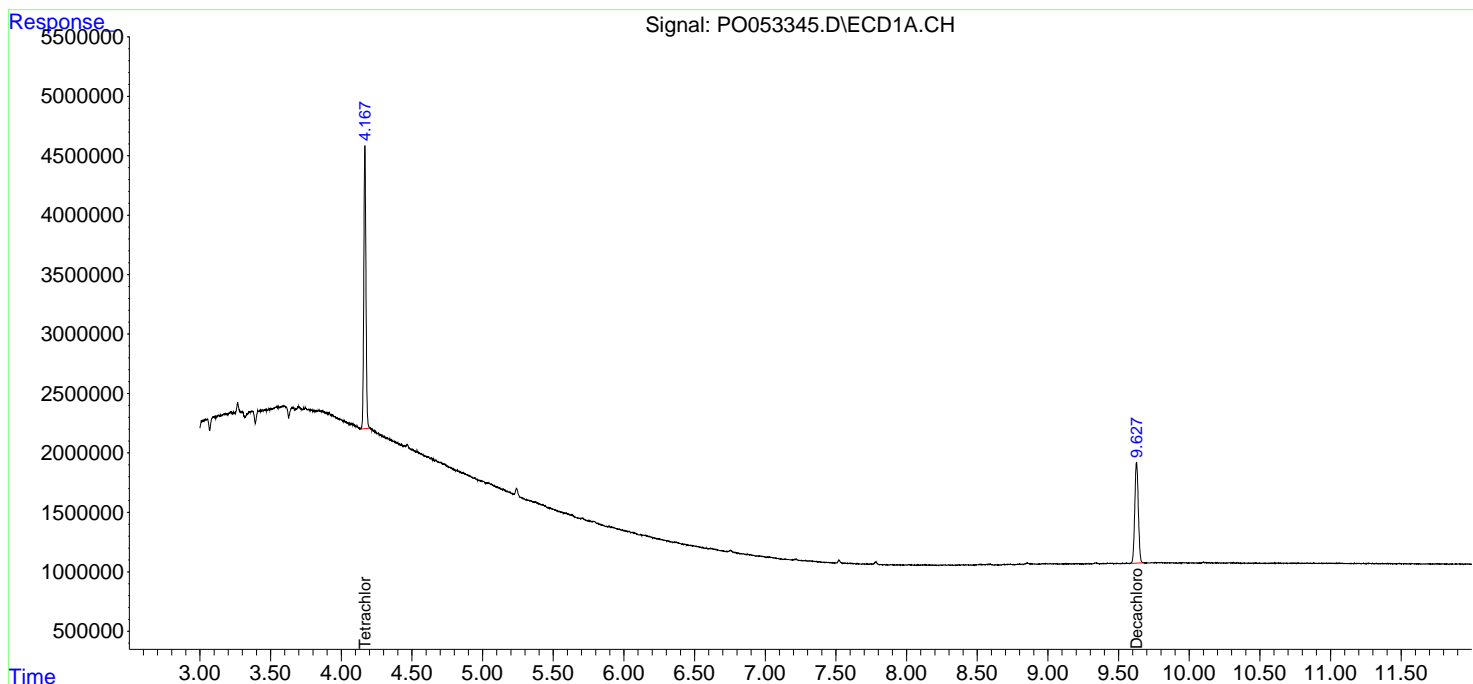
(f)=RT Delta > 1/2 Window (#)=Amounts differ by > 25% (m)=manual int.

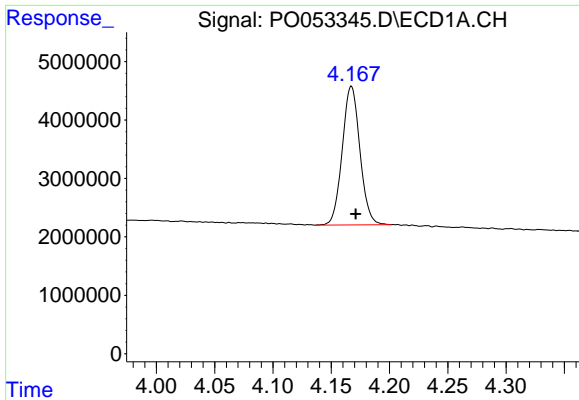
Data Path : Z:\pestpcbsrv\HPCHEM1\ECD\_0\Data\P0011019\  
 Data File : P0053345.D  
 Signal(s) : Signal #1: ECD1A.CH Signal #2: ECD2B.CH  
 Acq On : 10 Jan 2019 11:14  
 Operator : SM/SJ  
 Sample : K1082-15  
 Misc :  
 ALS Vial : 12 Sample Multiplier: 1

Instrument :  
 ECD\_O  
 ClientSampled :

Integration File signal 1: autoint1.e  
 Integration File signal 2: autoint2.e  
 Quant Time: Jan 11 00:43:41 2019  
 Quant Method : Z:\pestpcbsrv\HPCHEM1\ECD\_0\methods\P0010819.M  
 Quant Title : GC EXTRACTABLES  
 QLast Update : Wed Jan 09 03:34:05 2019  
 Response via : Initial Calibration  
 Integrator: ChemStation 6890 Scale Mode: Small noise peaks clipped

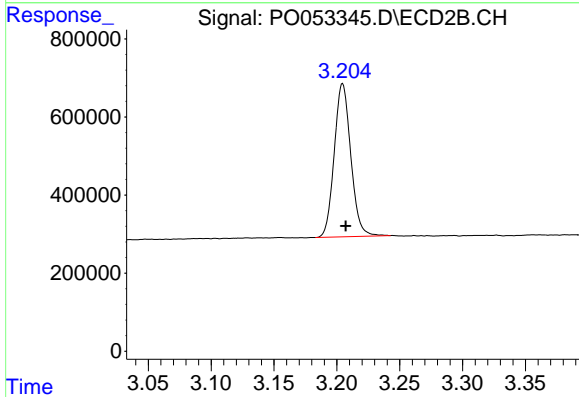
Volume Inj. : 2 µl  
 Signal #1 Phase : ZB-MR1 Signal #2 Phase: ZB-MR2  
 Signal #1 Info : 30Mx0.32mmx 0.50µ Signal #2 Info : 30M x 0.32mm x 0.25µm



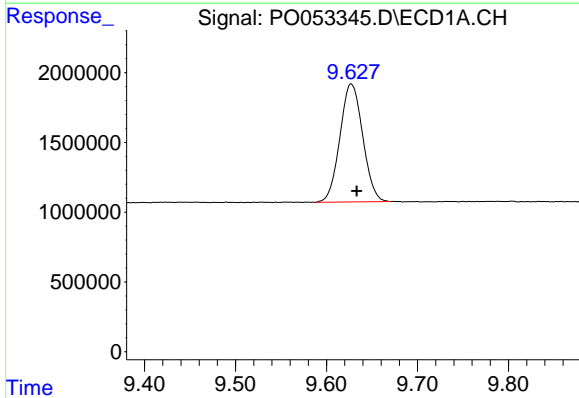


#1 Tetrachloro-m-xylene  
 R.T.: 4.167 min  
 Delta R.T.: -0.004 min  
 Response: 25067339  
 Conc: 18.76 ng/ml

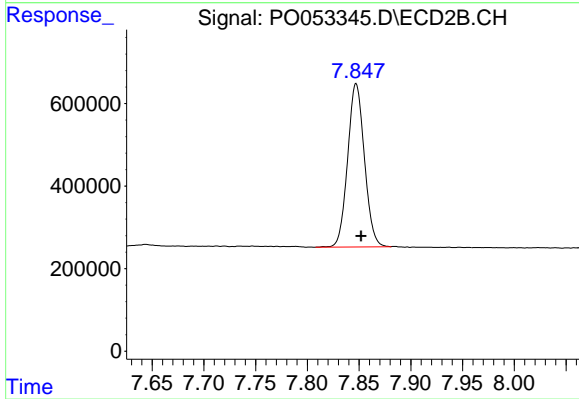
Instrument :  
 ECD\_O  
 ClientSampled :



#1 Tetrachloro-m-xylene  
 R.T.: 3.205 min  
 Delta R.T.: -0.002 min  
 Response: 3598489  
 Conc: 14.39 ng/ml



#2 Decachlorobiphenyl  
 R.T.: 9.627 min  
 Delta R.T.: -0.006 min  
 Response: 14746032  
 Conc: 18.67 ng/ml



#2 Decachlorobiphenyl  
 R.T.: 7.847 min  
 Delta R.T.: -0.005 min  
 Response: 4460699  
 Conc: 19.48 ng/ml