

Data Path : Z:\pestpcbsrv\HPCHEM1\ECD_P\Data\PP011022\
 Data File : PP042803.D
 Signal(s) : Signal #1: ECD1A.CH Signal #2: ECD2B.CH
 Acq On : 10 Jan 2022 19:54
 Operator : AJ\MA
 Sample : AR1242ICV500
 Misc :
 ALS Vial : 28 Sample Multiplier: 1

Instrument :
 ECD_O
 ClientSampleId :

Integration File signal 1: autoint1.e
 Integration File signal 2: autoint2.e
 Quant Time: Jan 11 01:17:35 2022
 Quant Method : Z:\pestpcbsrv\HPCHEM1\ECD_P\methods\PP011022.M
 Quant Title : GC EXTRACTABLES
 QLast Update : Tue Jan 11 01:16:54 2022
 Response via : Initial Calibration
 Integrator: ChemStation 6890 Scale Mode: Small noise peaks clipped

Volume Inj. : 2 µl
 Signal #1 Phase : ZB-MR1 Signal #2 Phase: ZB-MR2
 Signal #1 Info : 30Mx0.32mmx 0.50µ Signal #2 Info : 30M x 0.32mm x 0.25µm

Compound	RT#1	RT#2	Resp#1	Resp#2	ng/ml	ng/ml

System Monitoring Compounds						
1) SA Tetrachlo...	4.882	4.050	1307623	1309552	50.773	50.438
2) SA Decachlor...	10.818	9.387	812747	990140	47.077	50.303
Target Compounds						
16) L4 AR-1242-1	6.185	5.317	317862	408603	483.532	496.619
17) L4 AR-1242-2	6.209	5.337	469351	569664	494.473	502.145
18) L4 AR-1242-3	6.275	5.531	284446	324043	490.250	481.572
19) L4 AR-1242-4	6.379	5.626	238958	308314	513.612	477.885
20) L4 AR-1242-5	7.158	6.194	223913	365938	492.553	497.646

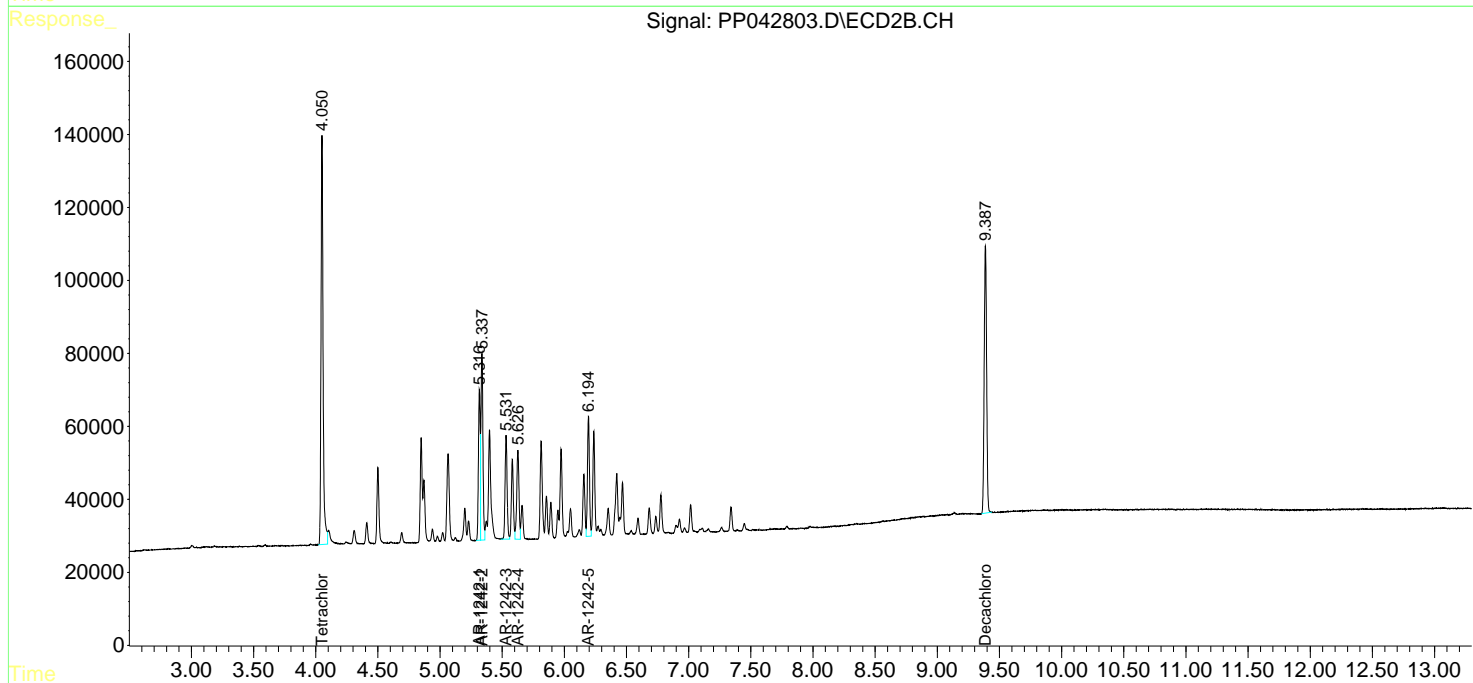
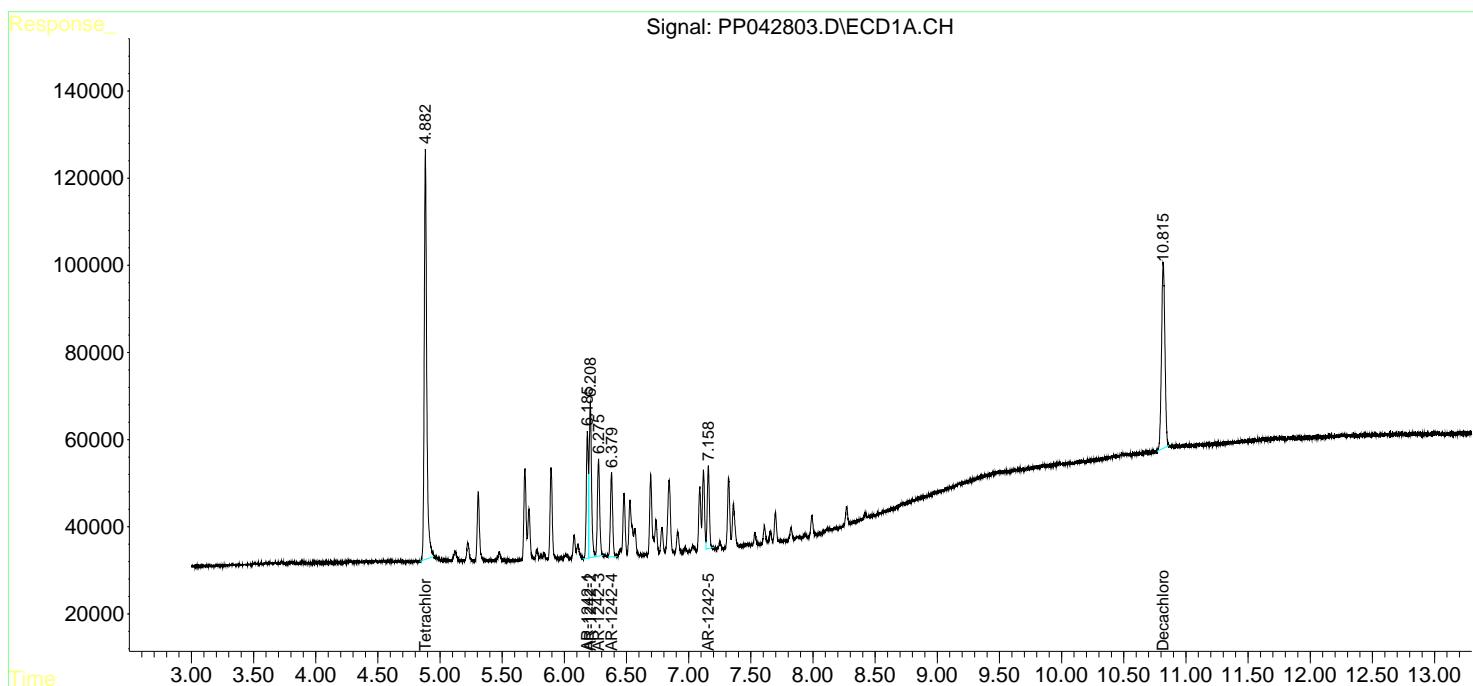
(f)=RT Delta > 1/2 Window (#)=Amounts differ by > 25% (m)=manual int.

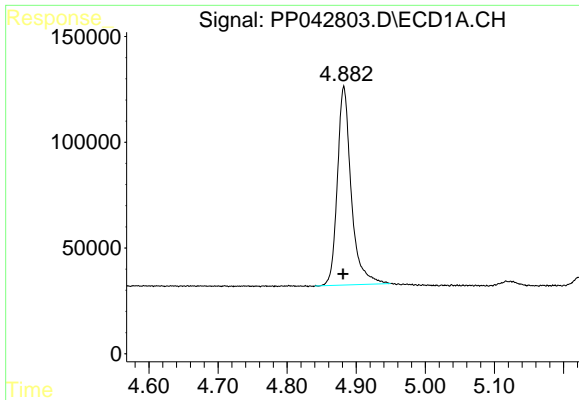
Data Path : Z:\pestpcbsrv\HPCHEM1\ECD_P\Data\PP011022\
 Data File : PP042803.D
 Signal(s) : Signal #1: ECD1A.CH Signal #2: ECD2B.CH
 Acq On : 10 Jan 2022 19:54
 Operator : AJ\MA
 Sample : AR1242ICV500
 Misc :
 ALS Vial : 28 Sample Multiplier: 1

Instrument :
 ECD_O
 ClientSampleId :

Integration File signal 1: autoint1.e
 Integration File signal 2: autoint2.e
 Quant Time: Jan 11 01:17:35 2022
 Quant Method : Z:\pestpcbsrv\HPCHEM1\ECD_P\methods\PP011022.M
 Quant Title : GC EXTRACTABLES
 QLast Update : Tue Jan 11 01:16:54 2022
 Response via : Initial Calibration
 Integrator: ChemStation 6890 Scale Mode: Small noise peaks clipped

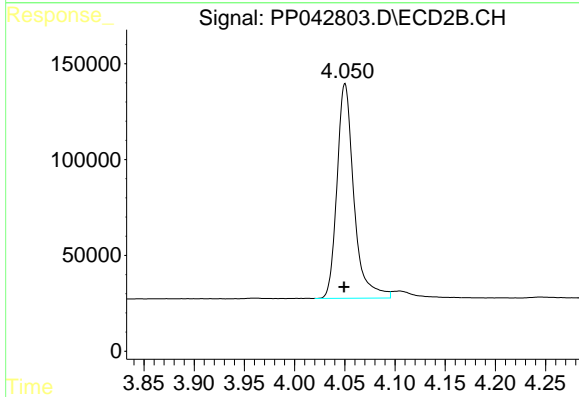
Volume Inj. : 2 µl
 Signal #1 Phase : ZB-MR1 Signal #2 Phase: ZB-MR2
 Signal #1 Info : 30Mx0.32mmx 0.50µ Signal #2 Info : 30M x 0.32mm x 0.25µm



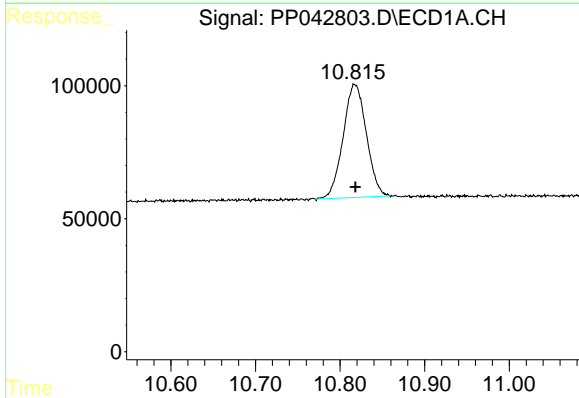


#1 Tetrachloro-m-xylene
 R.T.: 4.882 min
 Delta R.T.: 0.001 min
 Response: 1307623
 Conc: 50.77 ng/ml

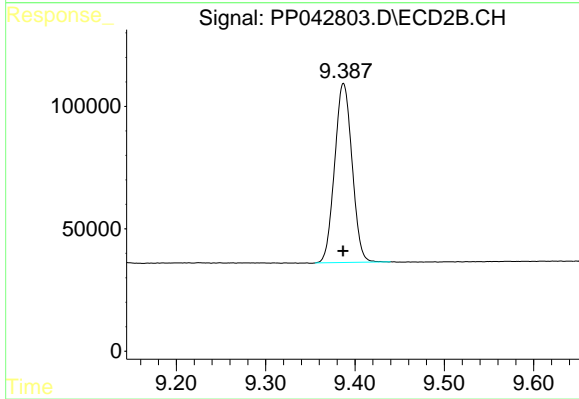
Instrument :
 ECD_O
 ClientSampleId :



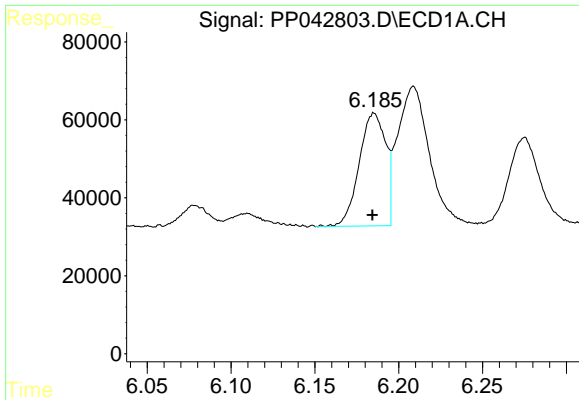
#1 Tetrachloro-m-xylene
 R.T.: 4.050 min
 Delta R.T.: 0.001 min
 Response: 1309552
 Conc: 50.44 ng/ml



#2 Decachlorobiphenyl
 R.T.: 10.818 min
 Delta R.T.: 0.000 min
 Response: 812747
 Conc: 47.08 ng/ml



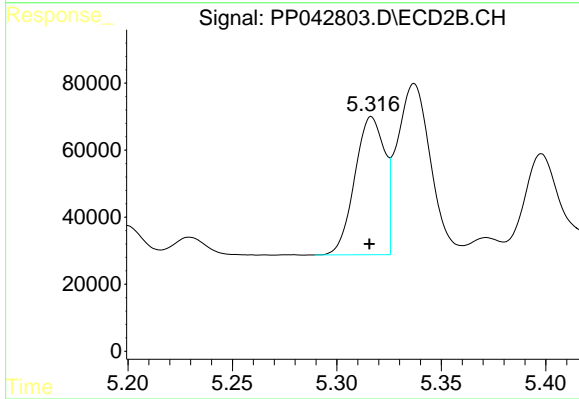
#2 Decachlorobiphenyl
 R.T.: 9.387 min
 Delta R.T.: 0.000 min
 Response: 990140
 Conc: 50.30 ng/ml



#16 AR-1242-1

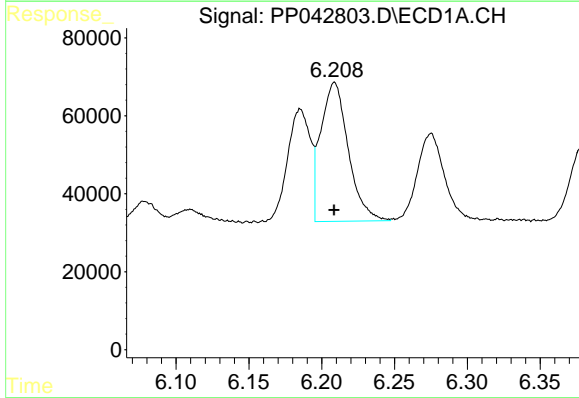
R.T.: 6.185 min
 Delta R.T.: 0.001 min
 Response: 317862
 Conc: 483.53 ng/ml

Instrument :
 ECD_O
 ClientSampleId :



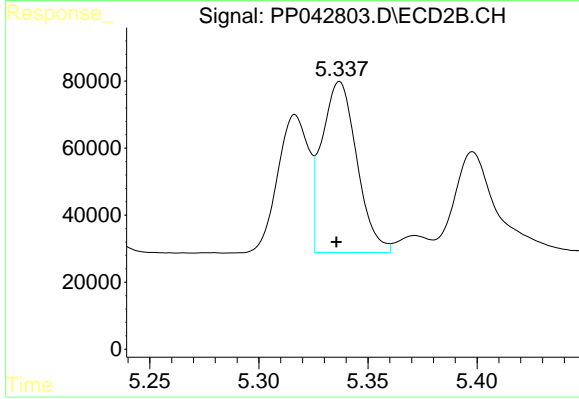
#16 AR-1242-1

R.T.: 5.317 min
 Delta R.T.: 0.000 min
 Response: 408603
 Conc: 496.62 ng/ml



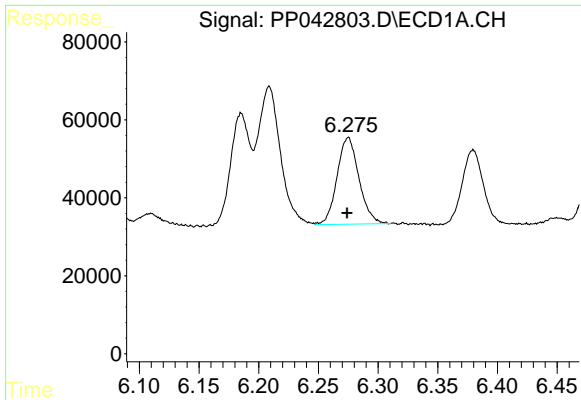
#17 AR-1242-2

R.T.: 6.209 min
 Delta R.T.: 0.000 min
 Response: 469351
 Conc: 494.47 ng/ml



#17 AR-1242-2

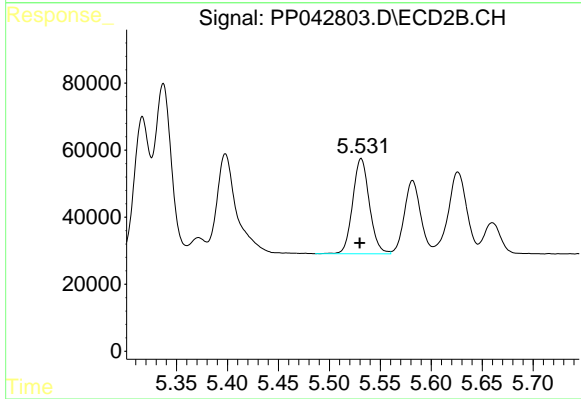
R.T.: 5.337 min
 Delta R.T.: 0.001 min
 Response: 569664
 Conc: 502.15 ng/ml



#18 AR-1242-3

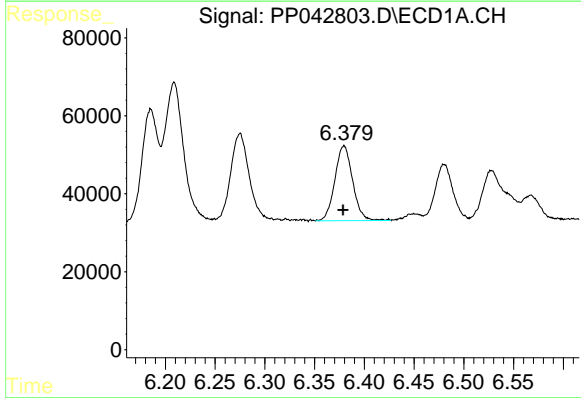
R.T.: 6.275 min
 Delta R.T.: 0.000 min
 Response: 284446
 Conc: 490.25 ng/ml

Instrument :
 ECD_O
 ClientSampleId :



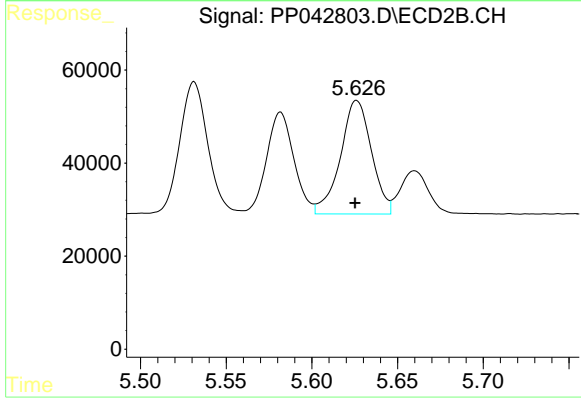
#18 AR-1242-3

R.T.: 5.531 min
 Delta R.T.: 0.001 min
 Response: 324043
 Conc: 481.57 ng/ml



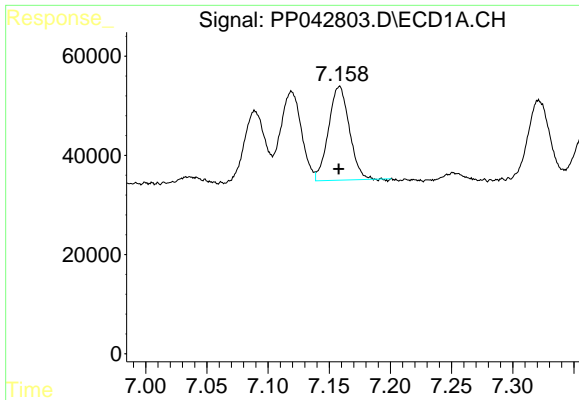
#19 AR-1242-4

R.T.: 6.379 min
 Delta R.T.: 0.000 min
 Response: 238958
 Conc: 513.61 ng/ml



#19 AR-1242-4

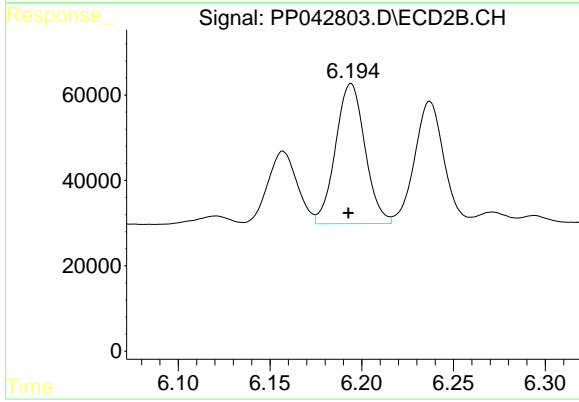
R.T.: 5.626 min
 Delta R.T.: 0.000 min
 Response: 308314
 Conc: 477.89 ng/ml



#20 AR-1242-5

R.T.: 7.158 min
Delta R.T.: 0.000 min
Response: 223913
Conc: 492.55 ng/ml

Instrument :
ECD_O
ClientSampleId :



#20 AR-1242-5

R.T.: 6.194 min
Delta R.T.: 0.001 min
Response: 365938
Conc: 497.65 ng/ml