

Data Path : Z:\pestpcbsrv\HPCHEM1\ECD\_0\Data\P0011022\  
 Data File : P0084109.D  
 Signal(s) : Signal #1: ECD1A.CH Signal #2: ECD2B.CH  
 Acq On : 10 Jan 2022 16:10  
 Operator : AJ\MA  
 Sample : N1054-05MSD  
 Misc :  
 ALS Vial : 24 Sample Multiplier: 1

**Instrument :**  
 ECD\_0  
**ClientSampleId :**  
 20211303-CAPE-5-COMPMSD

**Manual Integrations**  
**APPROVED**

Reviewed By :Ankita Jodhani 01/13/2022  
 Supervised By :mohammad ahmed 01/13/2022

Integration File signal 1: autoint1.e  
 Integration File signal 2: autoint2.e  
 Quant Time: Jan 11 02:43:46 2022  
 Quant Method : Z:\pestpcbsrv\HPCHEM1\ECD\_0\methods\P0010722.M  
 Quant Title : GC EXTRACTABLES  
 QLast Update : Mon Jan 10 11:26:21 2022  
 Response via : Initial Calibration  
 Integrator: ChemStation 6890 Scale Mode: Small noise peaks clipped

Volume Inj. : 2 µl  
 Signal #1 Phase : ZB-MR1 Signal #2 Phase: ZB-MR2  
 Signal #1 Info : 30Mx0.32mmx 0.50µ Signal #2 Info : 30M x 0.32mm x 0.25µm

Compound	RT#1	RT#2	Resp#1	Resp#2	ng/ml	ng/ml
-----						
System Monitoring Compounds						
1) SA Tetrachlo...	5.045	4.037	2176595	430581	22.043	21.057
2) SA Decachlor...	11.248	9.444	1099256	314198	16.525	16.085
Target Compounds						
3) L1 AR-1016-1	6.370	5.320	1776444	441280	511.296	540.081
4) L1 AR-1016-2	6.394	5.341	2523368	581755	507.983	535.637
5) L1 AR-1016-3	6.460	5.536	1636562	320648	507.131m	542.342
6) L1 AR-1016-4	6.567	5.589	1322587	250176	512.465m	518.821
7) L1 AR-1016-5	6.888	5.821	1286074	322609	513.157	533.769
31) L7 AR-1260-1	8.081	6.936	2077099	595310	504.944	546.187
32) L7 AR-1260-2	8.350	7.136	2268265	694940	479.204	528.057
33) L7 AR-1260-3	8.723	7.293	1410940	669653	401.197	511.010 #
34) L7 AR-1260-4	8.957	7.784	1810349	472572	459.752	462.986
35) L7 AR-1260-5	9.298	8.034	3047655	1094941	416.738	454.824

(f)=RT Delta > 1/2 Window (#)=Amounts differ by > 25% (m)=manual int.

Data Path : Z:\pestpcbsrv\HPCHEM1\ECD\_O\Data\P0011022\  
 Data File : P0084109.D  
 Signal(s) : Signal #1: ECD1A.CH Signal #2: ECD2B.CH  
 Acq On : 10 Jan 2022 16:10  
 Operator : AJ\MA  
 Sample : N1054-05MSD  
 Misc :  
 ALS Vial : 24 Sample Multiplier: 1

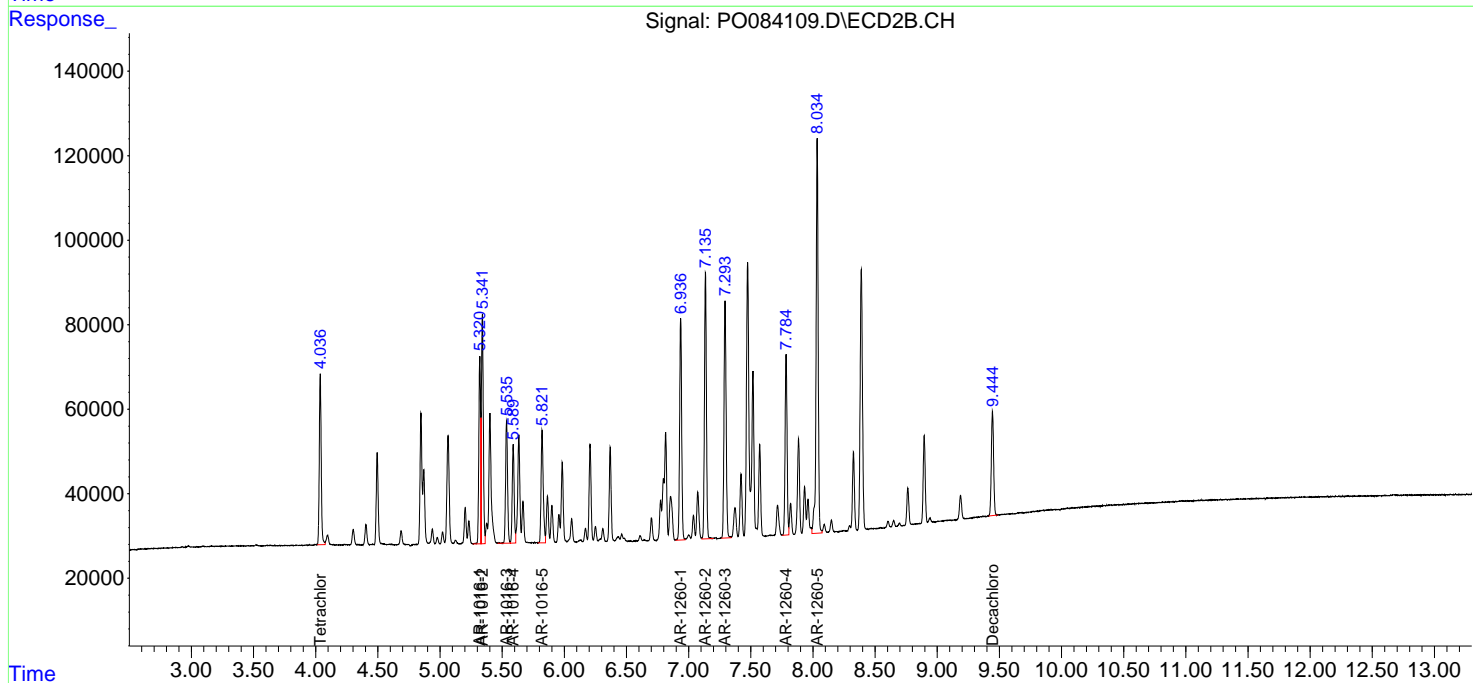
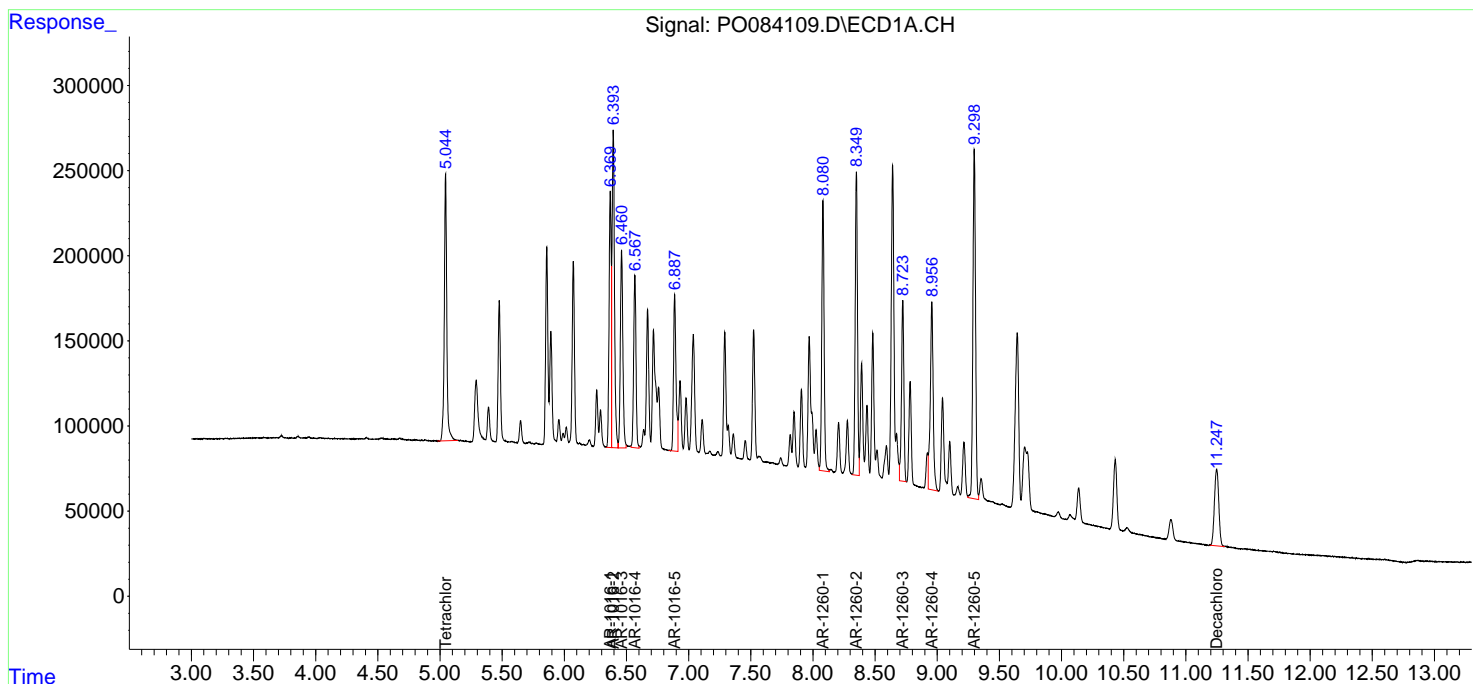
**Instrument :**  
 ECD\_O  
**ClientSampleId :**  
 20211303-CAPE-5-COMPMSD

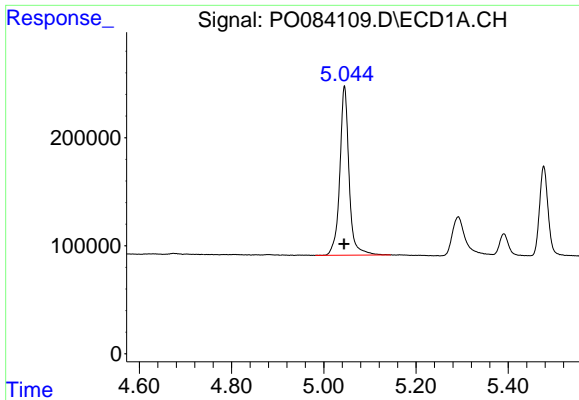
**Manual Integrations**  
**APPROVED**

Reviewed By :Ankita Jodhani 01/13/2022  
 Supervised By :mohammad ahmed 01/13/2022

Integration File signal 1: autoint1.e  
 Integration File signal 2: autoint2.e  
 Quant Time: Jan 11 02:43:46 2022  
 Quant Method : Z:\pestpcbsrv\HPCHEM1\ECD\_O\methods\P0010722.M  
 Quant Title : GC EXTRACTABLES  
 QLast Update : Mon Jan 10 11:26:21 2022  
 Response via : Initial Calibration  
 Integrator: ChemStation 6890 Scale Mode: Small noise peaks clipped

Volume Inj. : 2 µl  
 Signal #1 Phase : ZB-MR1 Signal #2 Phase: ZB-MR2  
 Signal #1 Info : 30Mx0.32mmx 0.50µ Signal #2 Info : 30M x 0.32mm x 0.25µm

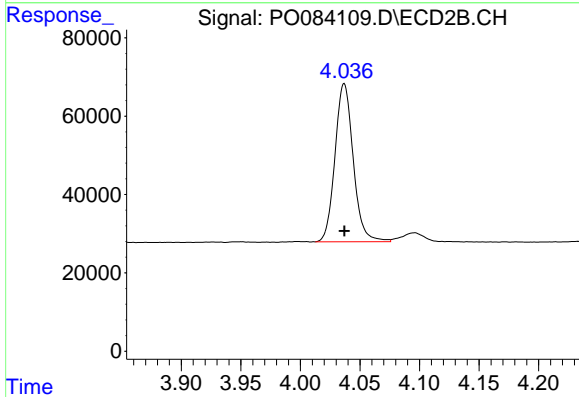




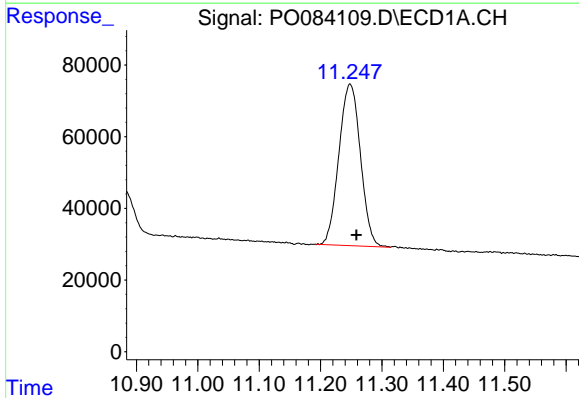
#1 Tetrachloro-m-xylene  
 R.T.: 5.045 min  
 Delta R.T.: 0.000 min  
 Response: 2176595  
 Conc: 22.04 ng/ml

Instrument : ECD\_O  
 ClientSampleId : 20211303-CAPE-5-COMPMSD

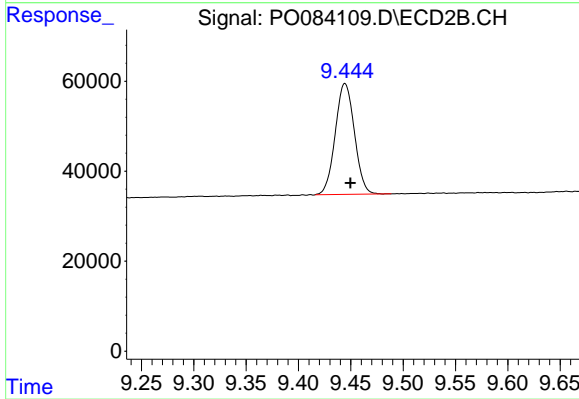
Manual Integrations  
**APPROVED**  
 Reviewed By :Ankita Jodhani 01/13/2022  
 Supervised By :mohammad ahmed 01/13/2022



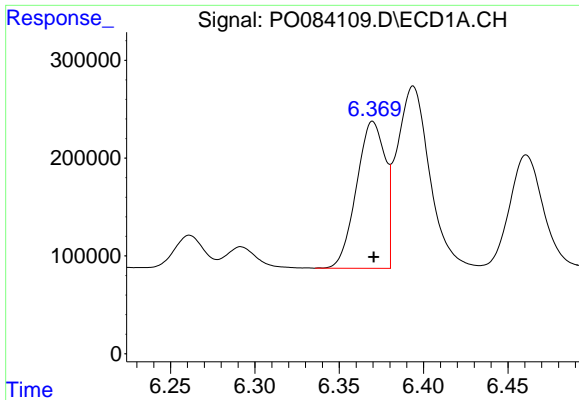
#1 Tetrachloro-m-xylene  
 R.T.: 4.037 min  
 Delta R.T.: 0.000 min  
 Response: 430581  
 Conc: 21.06 ng/ml



#2 Decachlorobiphenyl  
 R.T.: 11.248 min  
 Delta R.T.: -0.010 min  
 Response: 1099256  
 Conc: 16.53 ng/ml



#2 Decachlorobiphenyl  
 R.T.: 9.444 min  
 Delta R.T.: -0.005 min  
 Response: 314198  
 Conc: 16.08 ng/ml



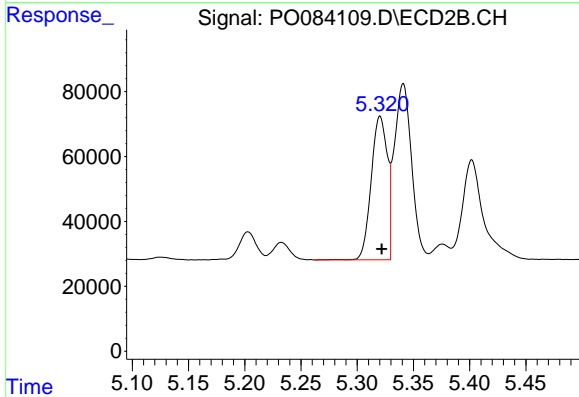
#3 AR-1016-1

R.T.: 6.370 min  
 Delta R.T.: 0.000 min  
 Response: 1776444  
 Conc: 511.30 ng/ml

Instrument :  
 ECD\_O  
 ClientSampleId :  
 20211303-CAPE-5-COMPMSD

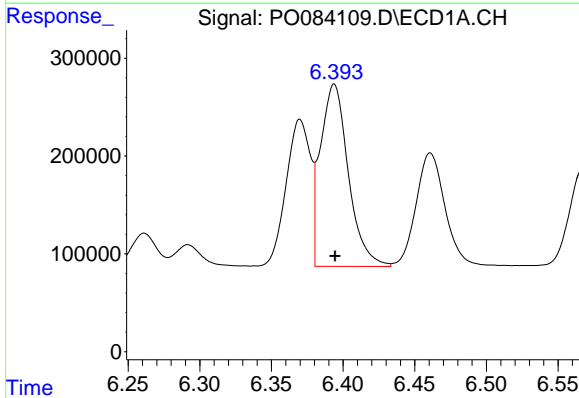
Manual Integrations  
 APPROVED

Reviewed By :Ankita Jodhani 01/13/2022  
 Supervised By :mohammad ahmed 01/13/2022



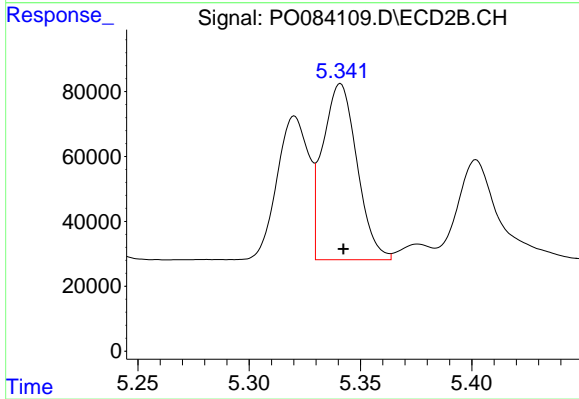
#3 AR-1016-1

R.T.: 5.320 min  
 Delta R.T.: -0.001 min  
 Response: 441280  
 Conc: 540.08 ng/ml



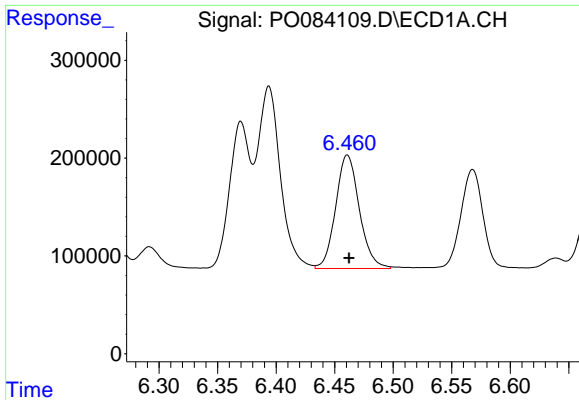
#4 AR-1016-2

R.T.: 6.394 min  
 Delta R.T.: 0.000 min  
 Response: 2523368  
 Conc: 507.98 ng/ml



#4 AR-1016-2

R.T.: 5.341 min  
 Delta R.T.: -0.001 min  
 Response: 581755  
 Conc: 535.64 ng/ml



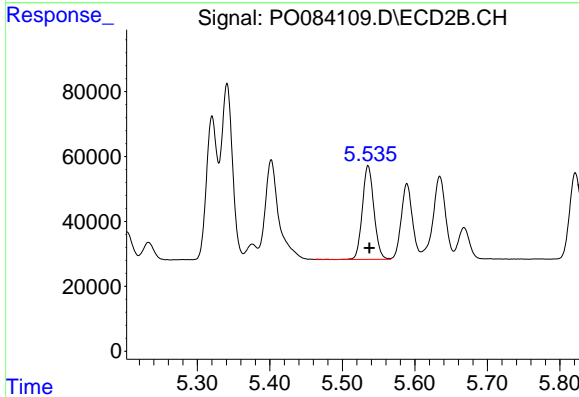
#5 AR-1016-3

R.T.: 6.460 min  
 Delta R.T.: -0.002 min  
 Response: 1636562  
 Conc: 507.13 ng/ml

Instrument :  
 ECD\_O  
 ClientSampleId :  
 20211303-CAPE-5-COMPMSD

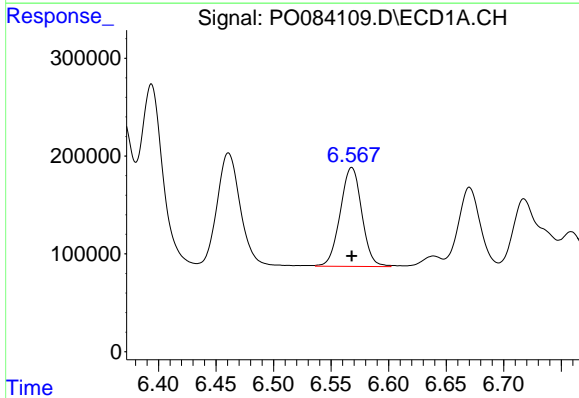
Manual Integrations  
 APPROVED

Reviewed By :Ankita Jodhani 01/13/2022  
 Supervised By :mohammad ahmed 01/13/2022



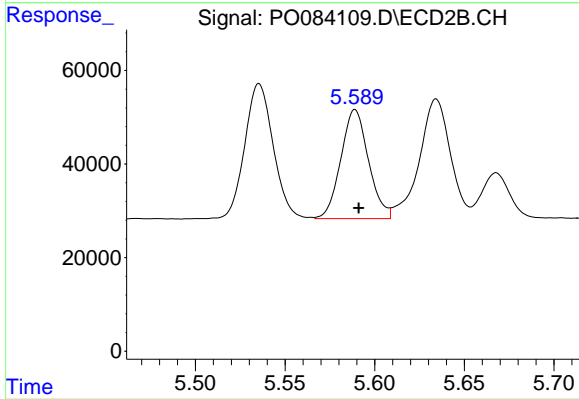
#5 AR-1016-3

R.T.: 5.536 min  
 Delta R.T.: -0.002 min  
 Response: 320648  
 Conc: 542.34 ng/ml



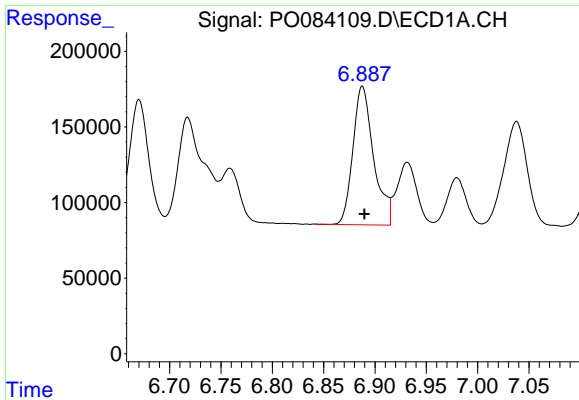
#6 AR-1016-4

R.T.: 6.567 min  
 Delta R.T.: 0.000 min  
 Response: 1322587  
 Conc: 512.47 ng/ml m



#6 AR-1016-4

R.T.: 5.589 min  
 Delta R.T.: -0.002 min  
 Response: 250176  
 Conc: 518.82 ng/ml



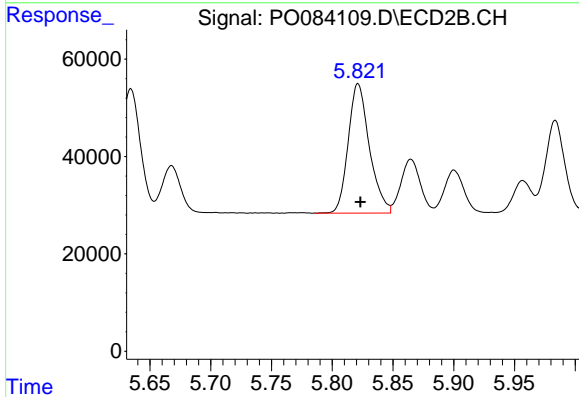
#7 AR-1016-5

R.T.: 6.888 min  
 Delta R.T.: -0.002 min  
 Response: 1286074  
 Conc: 513.16 ng/ml

Instrument :  
 ECD\_O  
 ClientSampleId :  
 20211303-CAPE-5-COMPMSD

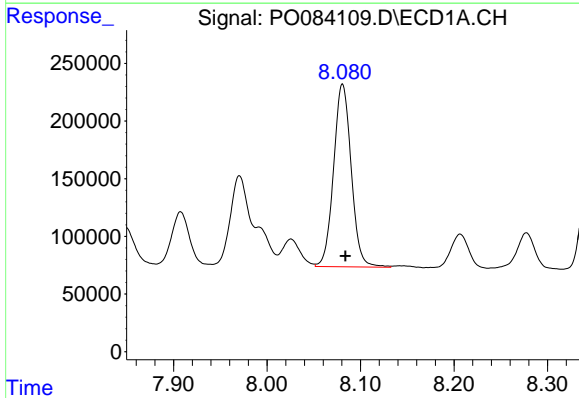
Manual Integrations  
 APPROVED

Reviewed By :Ankita Jodhani 01/13/2022  
 Supervised By :mohammad ahmed 01/13/2022



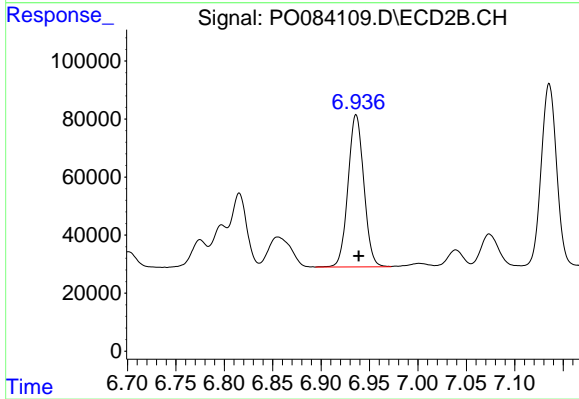
#7 AR-1016-5

R.T.: 5.821 min  
 Delta R.T.: -0.002 min  
 Response: 322609  
 Conc: 533.77 ng/ml



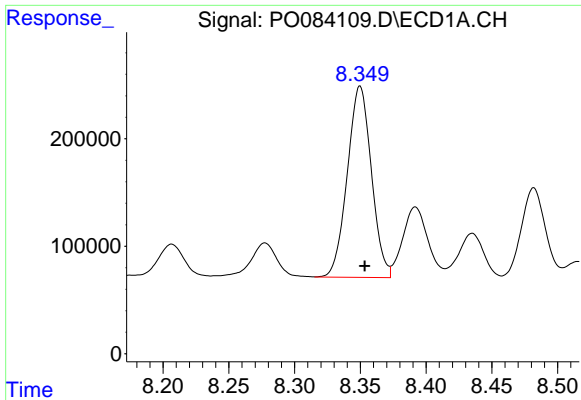
#31 AR-1260-1

R.T.: 8.081 min  
 Delta R.T.: -0.003 min  
 Response: 2077099  
 Conc: 504.94 ng/ml



#31 AR-1260-1

R.T.: 6.936 min  
 Delta R.T.: -0.002 min  
 Response: 595310  
 Conc: 546.19 ng/ml



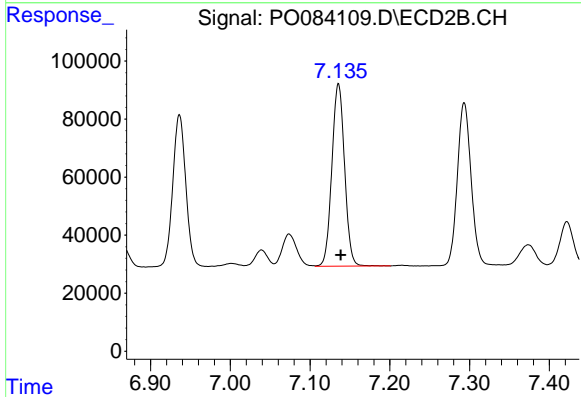
#32 AR-1260-2

R.T.: 8.350 min  
 Delta R.T.: -0.004 min  
 Response: 2268265  
 Conc: 479.20 ng/ml

Instrument :  
 ECD\_O  
 ClientSampleId :  
 20211303-CAPE-5-COMPMSD

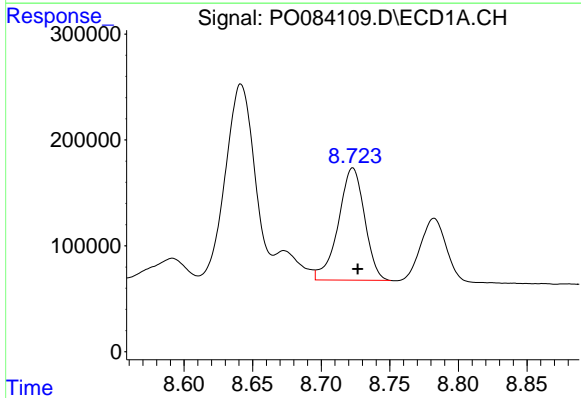
Manual Integrations  
 APPROVED

Reviewed By :Ankita Jodhani 01/13/2022  
 Supervised By :mohammad ahmed 01/13/2022



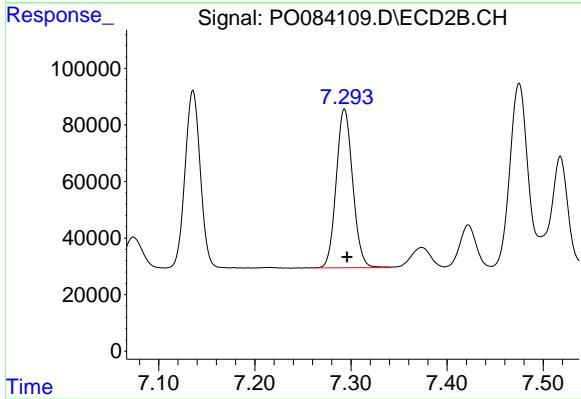
#32 AR-1260-2

R.T.: 7.136 min  
 Delta R.T.: -0.003 min  
 Response: 694940  
 Conc: 528.06 ng/ml



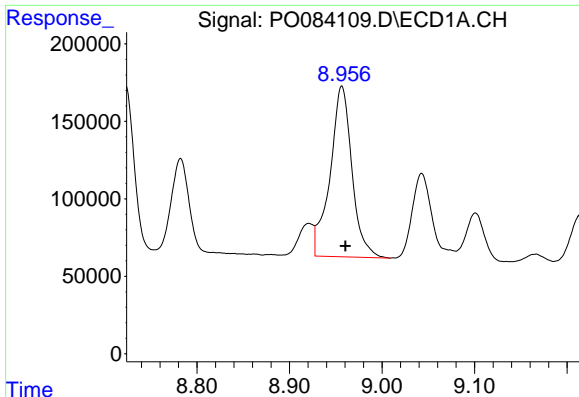
#33 AR-1260-3

R.T.: 8.723 min  
 Delta R.T.: -0.004 min  
 Response: 1410940  
 Conc: 401.20 ng/ml



#33 AR-1260-3

R.T.: 7.293 min  
 Delta R.T.: -0.003 min  
 Response: 669653  
 Conc: 511.01 ng/ml



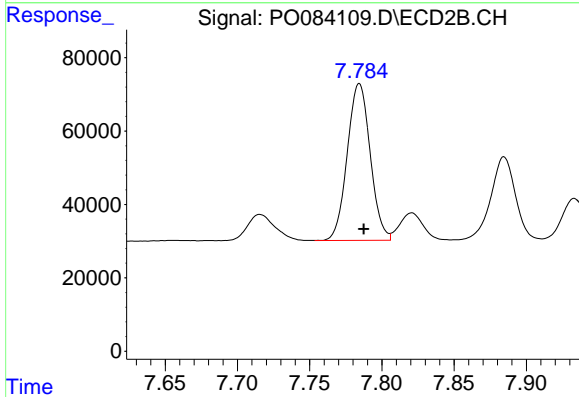
#34 AR-1260-4

R.T.: 8.957 min  
 Delta R.T.: -0.004 min  
 Response: 1810349  
 Conc: 459.75 ng/ml

Instrument :  
 ECD\_O  
 ClientSampleId :  
 20211303-CAPE-5-COMPMSD

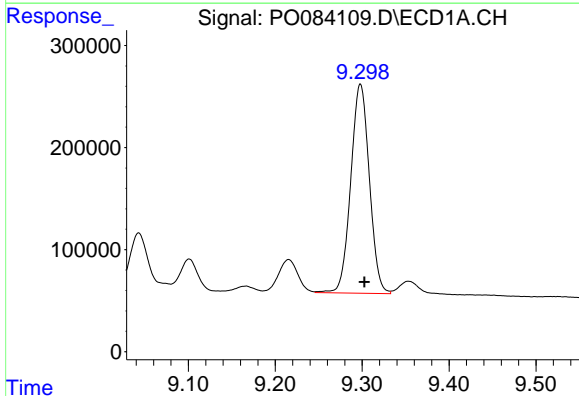
Manual Integrations  
 APPROVED

Reviewed By :Ankita Jodhani 01/13/2022  
 Supervised By :mohammad ahmed 01/13/2022



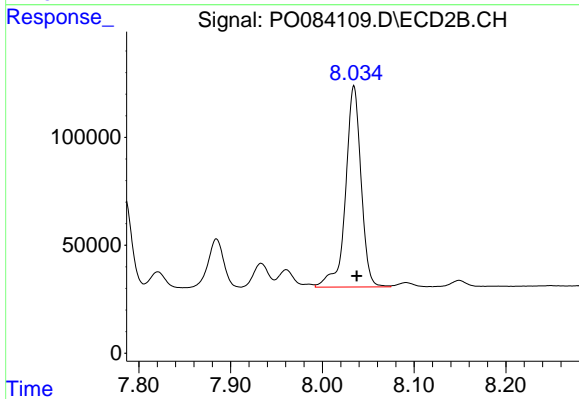
#34 AR-1260-4

R.T.: 7.784 min  
 Delta R.T.: -0.003 min  
 Response: 472572  
 Conc: 462.99 ng/ml



#35 AR-1260-5

R.T.: 9.298 min  
 Delta R.T.: -0.005 min  
 Response: 3047655  
 Conc: 416.74 ng/ml



#35 AR-1260-5

R.T.: 8.034 min  
 Delta R.T.: -0.003 min  
 Response: 1094941  
 Conc: 454.82 ng/ml