

Data Path : Z:\pestpcbsrv\HPCHEM1\ECD_0\Data\P0011022\
 Data File : P0084127.D
 Signal(s) : Signal #1: ECD1A.CH Signal #2: ECD2B.CH
 Acq On : 10 Jan 2022 21:40
 Operator : AJ\MA
 Sample : N1054-18
 Misc :
 ALS Vial : 40 Sample Multiplier: 1

Instrument :
 ECD_0
ClientSampleId :
 20220024-CAPE-6-MODIFIED-ELUTRIATE

Integration File signal 1: autoint1.e
 Integration File signal 2: autoint2.e
 Quant Time: Jan 11 02:51:07 2022
 Quant Method : Z:\pestpcbsrv\HPCHEM1\ECD_0\methods\P0010722.M
 Quant Title : GC EXTRACTABLES
 QLast Update : Mon Jan 10 11:26:21 2022
 Response via : Initial Calibration
 Integrator: ChemStation 6890 Scale Mode: Small noise peaks clipped

Volume Inj. : 2 µl
 Signal #1 Phase : ZB-MR1 Signal #2 Phase: ZB-MR2
 Signal #1 Info : 30Mx0.32mmx 0.50µ Signal #2 Info : 30M x 0.32mm x 0.25µm

Compound	RT#1	RT#2	Resp#1	Resp#2	ng/ml	ng/ml

System Monitoring Compounds						
1) SA Tetrachlo...	5.045	4.037	2171765	458964	21.994	22.445
2) SA Decachlor...	11.250	9.443	856689	241702	12.879	12.373

Target Compounds

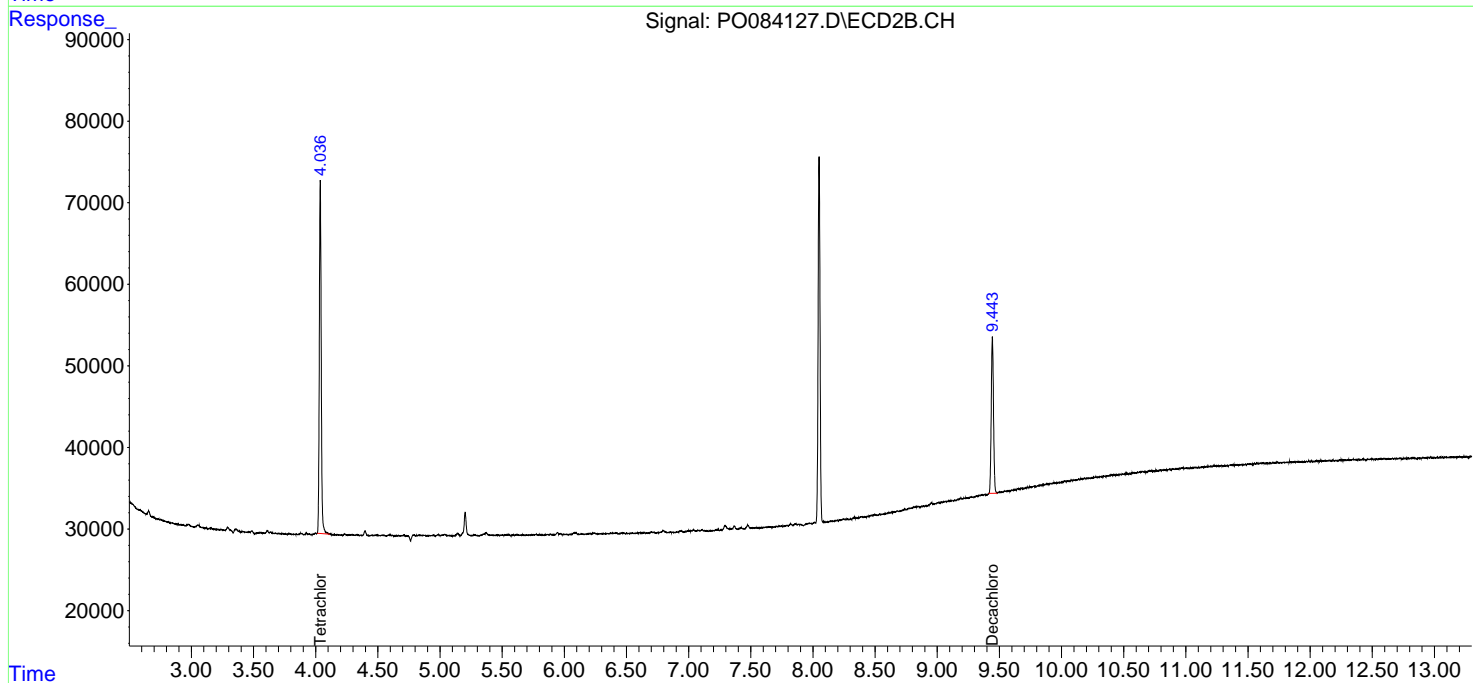
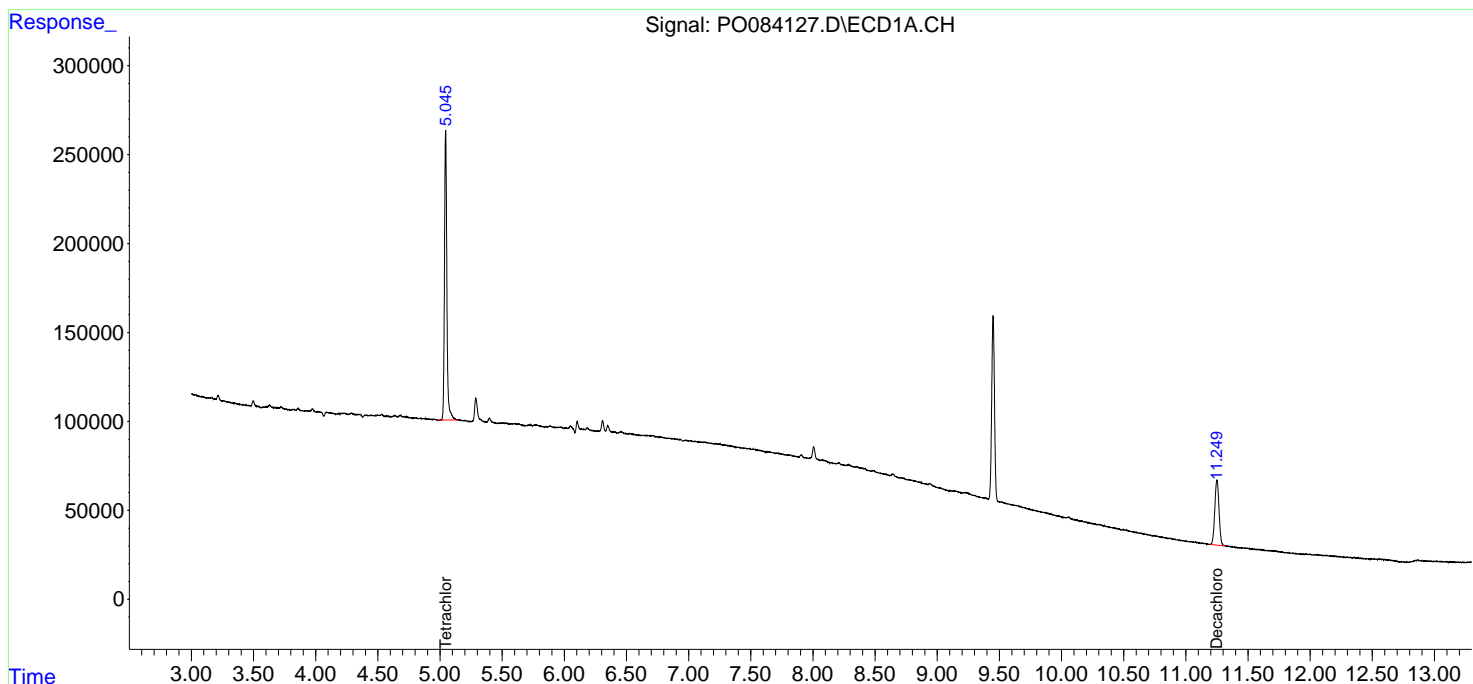
(f)=RT Delta > 1/2 Window (#)=Amounts differ by > 25% (m)=manual int.

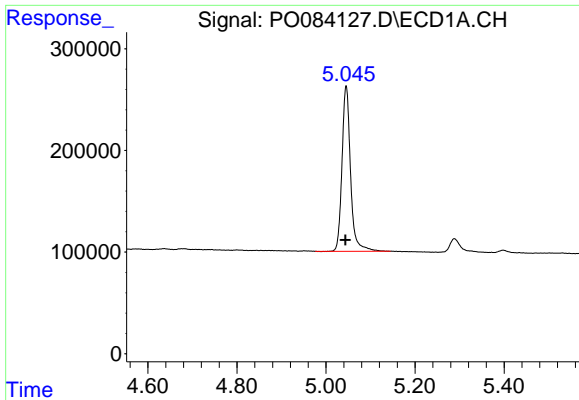
Data Path : Z:\pestpcbsrv\HPCHEM1\ECD_O\Data\P0011022\
 Data File : P0084127.D
 Signal(s) : Signal #1: ECD1A.CH Signal #2: ECD2B.CH
 Acq On : 10 Jan 2022 21:40
 Operator : AJ\MA
 Sample : N1054-18
 Misc :
 ALS Vial : 40 Sample Multiplier: 1

Instrument :
 ECD_O
ClientSampleId :
 20220024-CAPE-6-MODIFIED-ELUTRIATE

Integration File signal 1: autoint1.e
 Integration File signal 2: autoint2.e
 Quant Time: Jan 11 02:51:07 2022
 Quant Method : Z:\pestpcbsrv\HPCHEM1\ECD_O\methods\P0010722.M
 Quant Title : GC EXTRACTABLES
 QLast Update : Mon Jan 10 11:26:21 2022
 Response via : Initial Calibration
 Integrator: ChemStation 6890 Scale Mode: Small noise peaks clipped

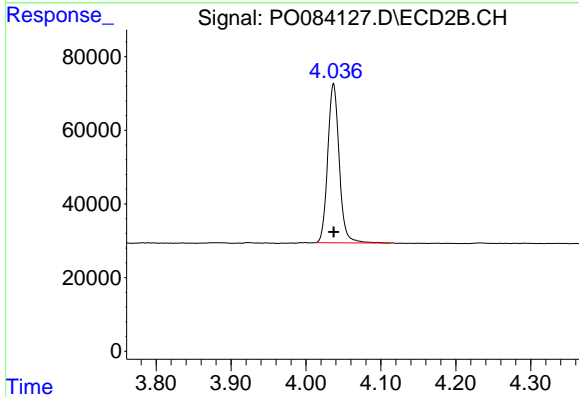
Volume Inj. : 2 µl
 Signal #1 Phase : ZB-MR1 Signal #2 Phase: ZB-MR2
 Signal #1 Info : 30Mx0.32mmx 0.50µ Signal #2 Info : 30M x 0.32mm x 0.25µm



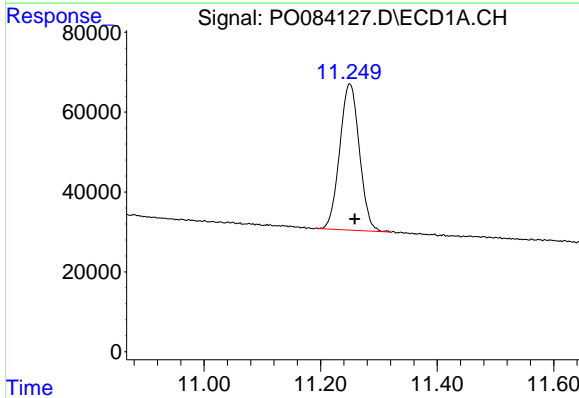


#1 Tetrachloro-m-xylene
 R.T.: 5.045 min
 Delta R.T.: 0.001 min
 Response: 2171765
 Conc: 21.99 ng/ml

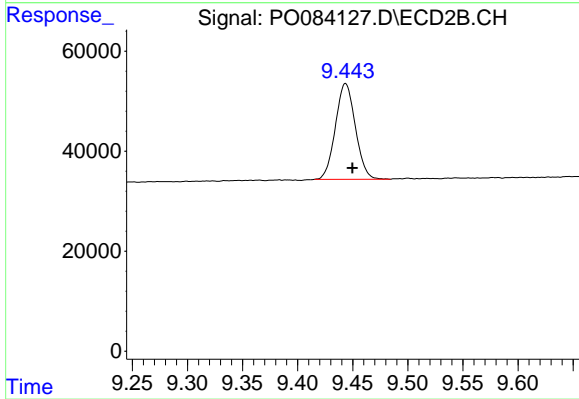
Instrument :
 ECD_O
 ClientSampleId :
 20220024-CAPE-6-MODIFIED-ELUTRIATE



#1 Tetrachloro-m-xylene
 R.T.: 4.037 min
 Delta R.T.: 0.000 min
 Response: 458964
 Conc: 22.45 ng/ml



#2 Decachlorobiphenyl
 R.T.: 11.250 min
 Delta R.T.: -0.008 min
 Response: 856689
 Conc: 12.88 ng/ml



#2 Decachlorobiphenyl
 R.T.: 9.443 min
 Delta R.T.: -0.006 min
 Response: 241702
 Conc: 12.37 ng/ml