

Data Path : Z:\pestpcbsrv\HPCHEM1\ECD\_0\Data\P0011121\  
 Data File : P0074486.D  
 Signal(s) : Signal #1: ECD1A.CH Signal #2: ECD2B.CH  
 Acq On : 11 Jan 2021 20:01  
 Operator : AJ/MA  
 Sample : AR1248ICC500  
 Misc :  
 ALS Vial : 17 Sample Multiplier: 1

Instrument :  
 ECD\_0  
 ClientSampleId :

Integration File signal 1: autoint1.e  
 Integration File signal 2: autoint2.e  
 Quant Time: Jan 12 04:32:49 2021  
 Quant Method : Z:\pestpcbsrv\HPCHEM1\ECD\_0\methods\P0011121.M  
 Quant Title : GC EXTRACTABLES  
 QLast Update : Tue Jan 12 04:31:10 2021  
 Response via : Initial Calibration  
 Integrator: ChemStation 6890 Scale Mode: Small noise peaks clipped

Volume Inj. : 2 µl  
 Signal #1 Phase : ZB-MR1 Signal #2 Phase: ZB-MR2  
 Signal #1 Info : 30Mx0.32mmx 0.50µ Signal #2 Info : 30M x 0.32mm x 0.25µm

Compound	RT#1	RT#2	Resp#1	Resp#2	ng/ml	ng/ml
-----						
System Monitoring Compounds						
1) SA Tetrachlo...	4.932	4.008	5515882	2910418	50.000	50.000
2) SA Decachlor...	10.946	9.260	5278604	2856226	50.000	50.000
Target Compounds						
21) L5 AR-1248-1	6.253	5.251	1219492	688550	500.000	500.000
22) L5 AR-1248-2	6.549	5.513	1567756	925940	500.000	500.000
23) L5 AR-1248-3	6.767	5.556	1835128	941404	500.000	500.000
24) L5 AR-1248-4	7.197	5.739	2230534	1120518	500.000	500.000
25) L5 AR-1248-5	7.237	6.159	2113706	1173913	500.000	500.000
-----						

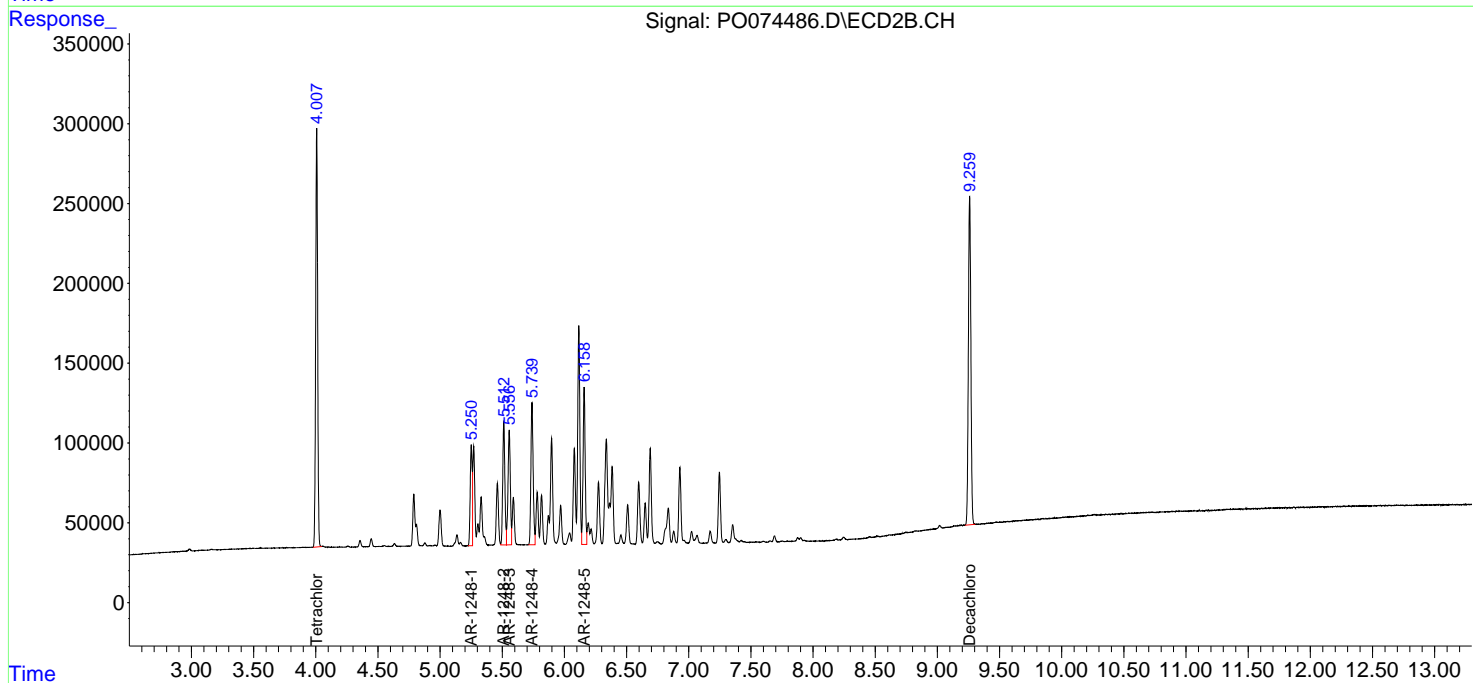
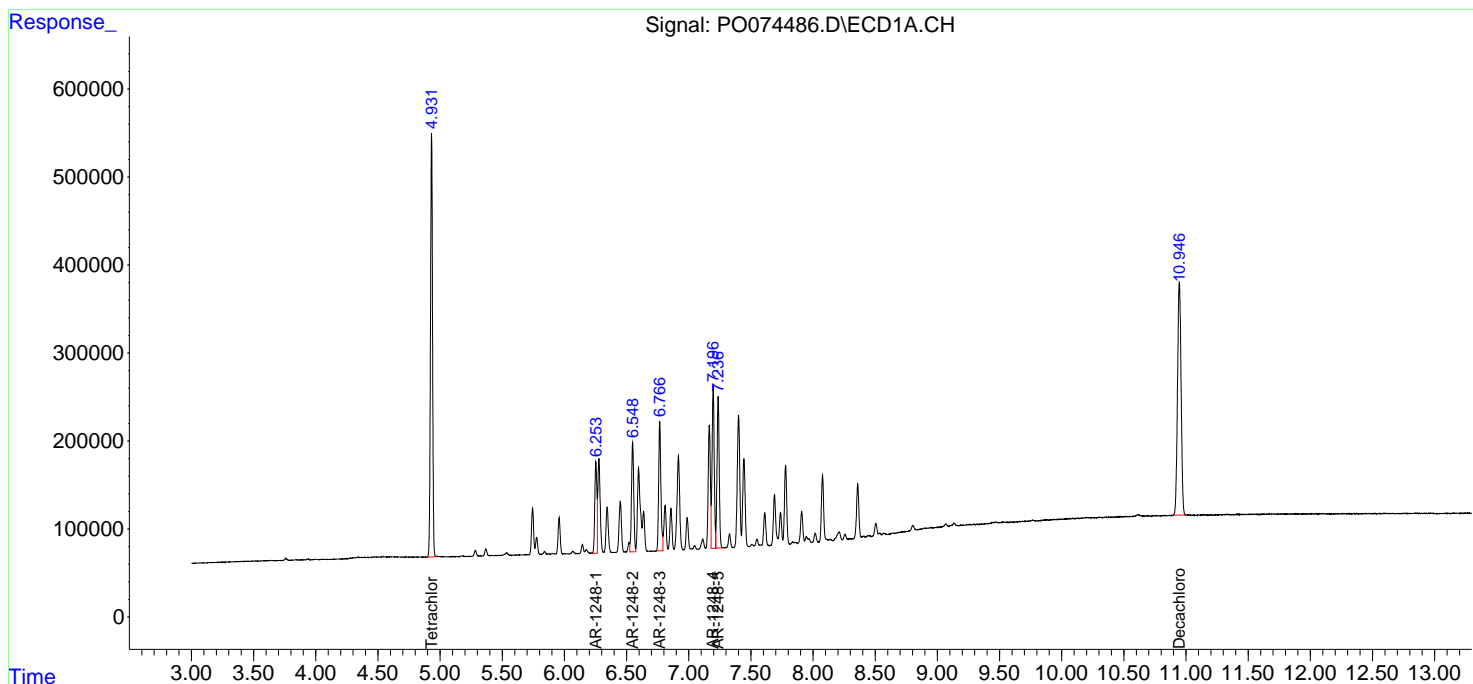
(f)=RT Delta > 1/2 Window (#)=Amounts differ by > 25% (m)=manual int.

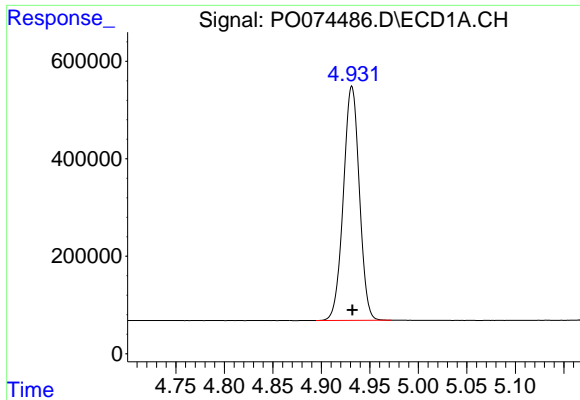
Data Path : Z:\pestpcbsrv\HPCHEM1\ECD\_O\Data\P0011121\  
 Data File : P0074486.D  
 Signal(s) : Signal #1: ECD1A.CH Signal #2: ECD2B.CH  
 Acq On : 11 Jan 2021 20:01  
 Operator : AJ/MA  
 Sample : AR1248ICC500  
 Misc :  
 ALS Vial : 17 Sample Multiplier: 1

Instrument :  
 ECD\_O  
 ClientSampled :

Integration File signal 1: autoint1.e  
 Integration File signal 2: autoint2.e  
 Quant Time: Jan 12 04:32:49 2021  
 Quant Method : Z:\pestpcbsrv\HPCHEM1\ECD\_O\methods\P0011121.M  
 Quant Title : GC EXTRACTABLES  
 QLast Update : Tue Jan 12 04:31:10 2021  
 Response via : Initial Calibration  
 Integrator: ChemStation 6890 Scale Mode: Small noise peaks clipped

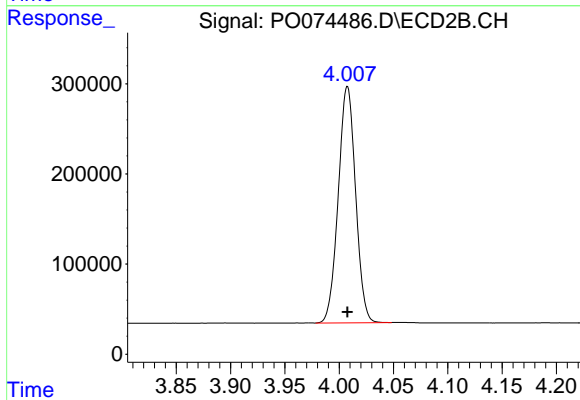
Volume Inj. : 2 µl  
 Signal #1 Phase : ZB-MR1 Signal #2 Phase: ZB-MR2  
 Signal #1 Info : 30Mx0.32mmx 0.50µ Signal #2 Info : 30M x 0.32mm x 0.25µm



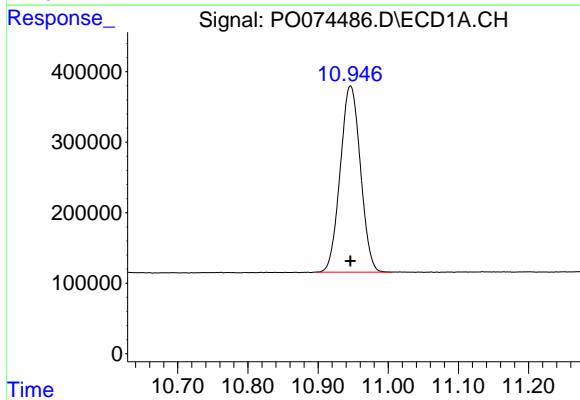


#1 Tetrachloro-m-xylene  
 R.T.: 4.932 min  
 Delta R.T.: 0.000 min  
 Response: 5515882  
 Conc: 50.00 ng/ml

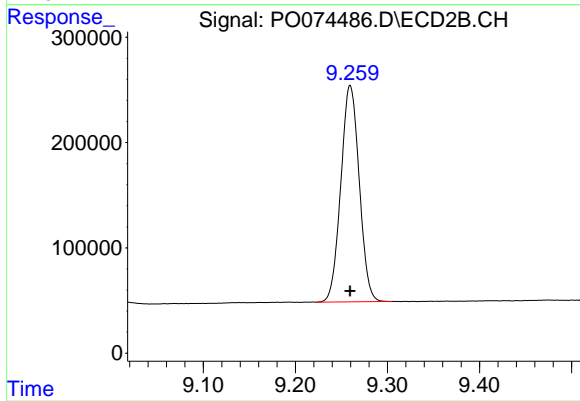
Instrument :  
 ECD\_O  
 ClientSampleId :



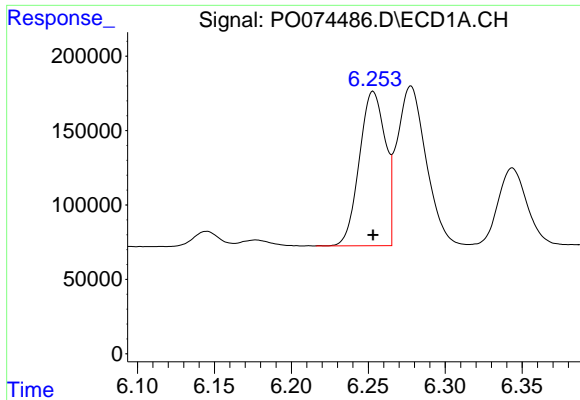
#1 Tetrachloro-m-xylene  
 R.T.: 4.008 min  
 Delta R.T.: 0.000 min  
 Response: 2910418  
 Conc: 50.00 ng/ml



#2 Decachlorobiphenyl  
 R.T.: 10.946 min  
 Delta R.T.: 0.000 min  
 Response: 5278604  
 Conc: 50.00 ng/ml



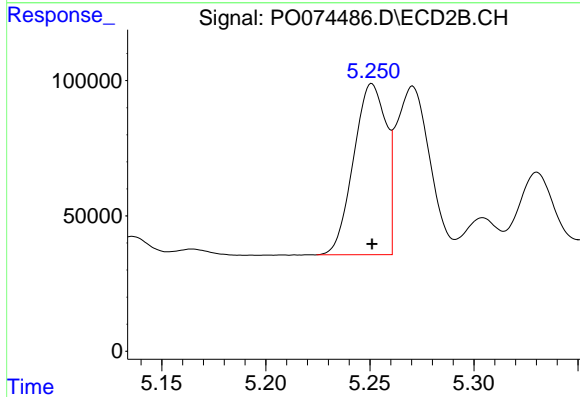
#2 Decachlorobiphenyl  
 R.T.: 9.260 min  
 Delta R.T.: 0.000 min  
 Response: 2856226  
 Conc: 50.00 ng/ml



#21 AR-1248-1

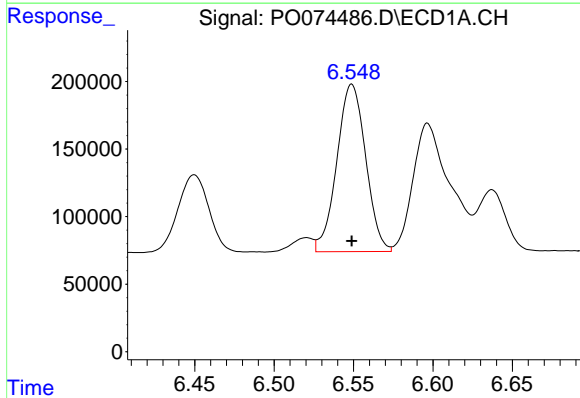
R.T.: 6.253 min  
 Delta R.T.: 0.000 min  
 Response: 1219492  
 Conc: 500.00 ng/ml

Instrument :  
 ECD\_O  
 ClientSampleId :



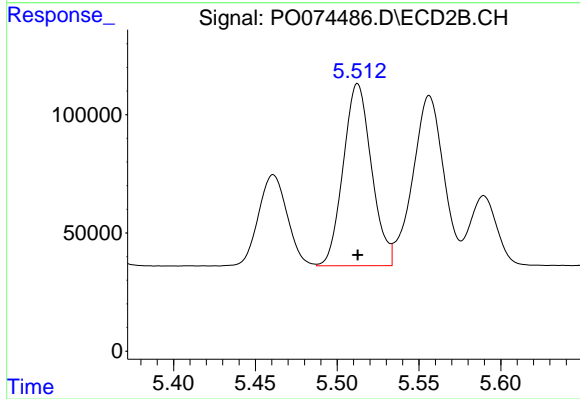
#21 AR-1248-1

R.T.: 5.251 min  
 Delta R.T.: 0.000 min  
 Response: 688550  
 Conc: 500.00 ng/ml



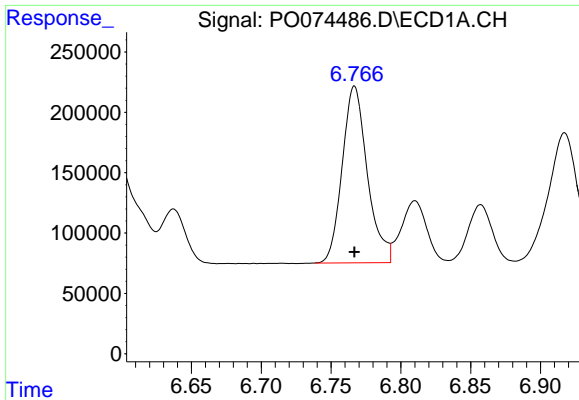
#22 AR-1248-2

R.T.: 6.549 min  
 Delta R.T.: 0.000 min  
 Response: 1567756  
 Conc: 500.00 ng/ml



#22 AR-1248-2

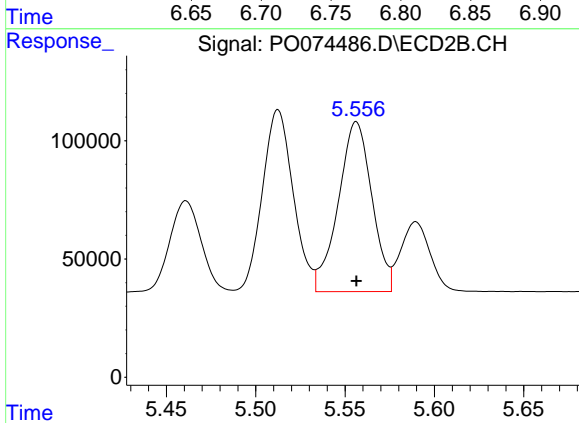
R.T.: 5.513 min  
 Delta R.T.: 0.000 min  
 Response: 925940  
 Conc: 500.00 ng/ml



#23 AR-1248-3

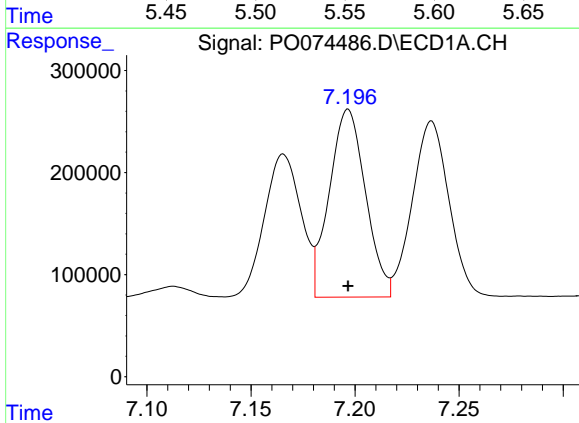
R.T.: 6.767 min  
 Delta R.T.: 0.000 min  
 Response: 1835128  
 Conc: 500.00 ng/ml

Instrument :  
 ECD\_O  
 ClientSampled :



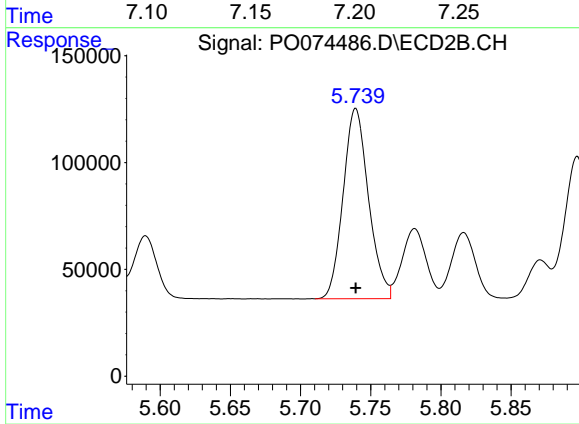
#23 AR-1248-3

R.T.: 5.556 min  
 Delta R.T.: 0.000 min  
 Response: 941404  
 Conc: 500.00 ng/ml



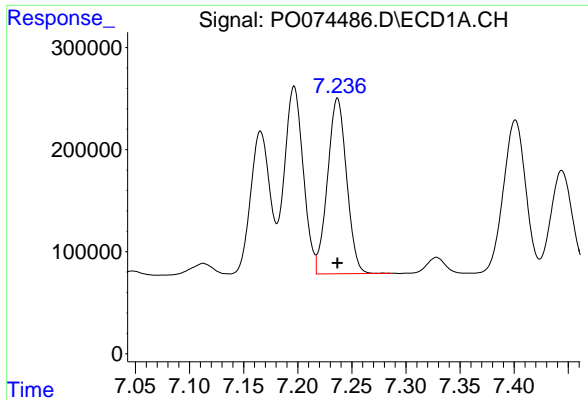
#24 AR-1248-4

R.T.: 7.197 min  
 Delta R.T.: 0.000 min  
 Response: 2230534  
 Conc: 500.00 ng/ml



#24 AR-1248-4

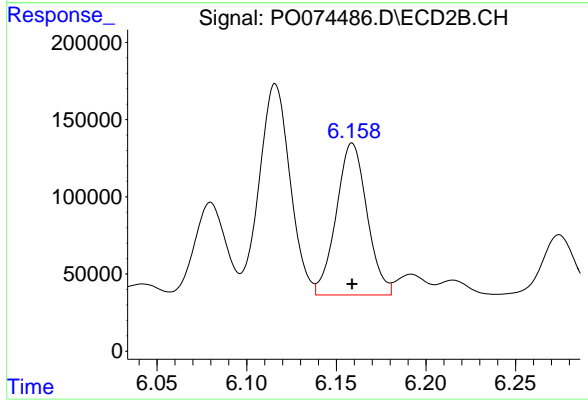
R.T.: 5.739 min  
 Delta R.T.: 0.000 min  
 Response: 1120518  
 Conc: 500.00 ng/ml



#25 AR-1248-5

R.T.: 7.237 min  
Delta R.T.: 0.000 min  
Response: 2113706  
Conc: 500.00 ng/ml

Instrument :  
ECD\_O  
ClientSampleId :



#25 AR-1248-5

R.T.: 6.159 min  
Delta R.T.: 0.000 min  
Response: 1173913  
Conc: 500.00 ng/ml